

28 and 35 ANSWER BACK UNIT
PARTS

FIGURE	CONTENTS	PAGE
1	Base and Motor	2
2	Answer Back Mechanism	3
3	Covers, Bases and Pads	4
4	Motor Components	5
5	334000 and 334681 Synchronous Motors	5
	Numerical Index	6

PAINT FINISH COLOR CODE CHART		
COLOR	Finish Suffixes	
	Textured Vinyl	Smooth Vinyl
Green Gray Light Gray Olive Gray	GA(45)	HB(68) HF(46)
The double asterisk(**) denotes a painted part. Suffix to be applied following the part number. Number in parentheses indicates Bell System Code.		

The part identification information contained in the following change notices have been incorporated in this issue.

TCN's #1481

NOTE: When ordering parts from this section prefix each number with the letters TP.

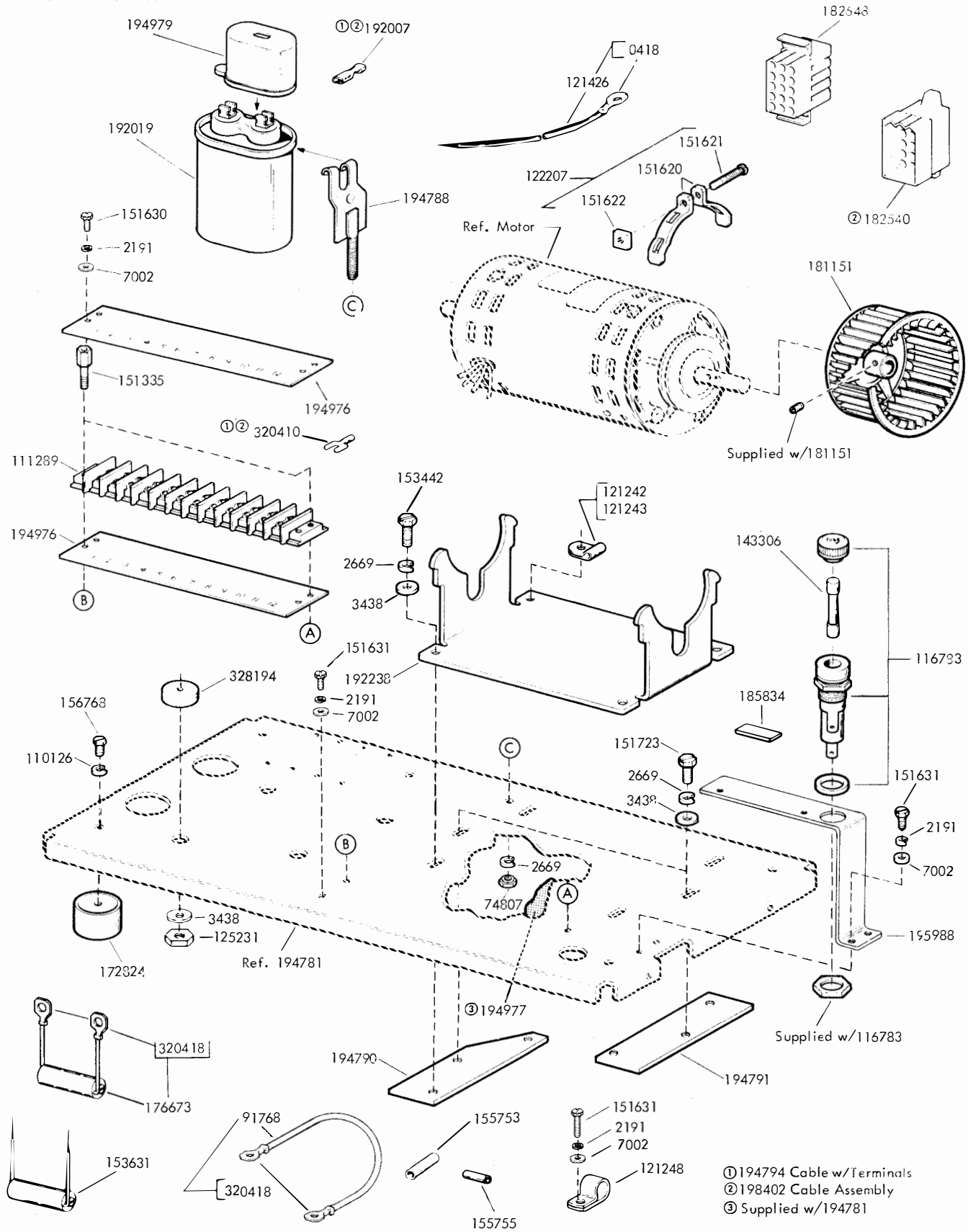
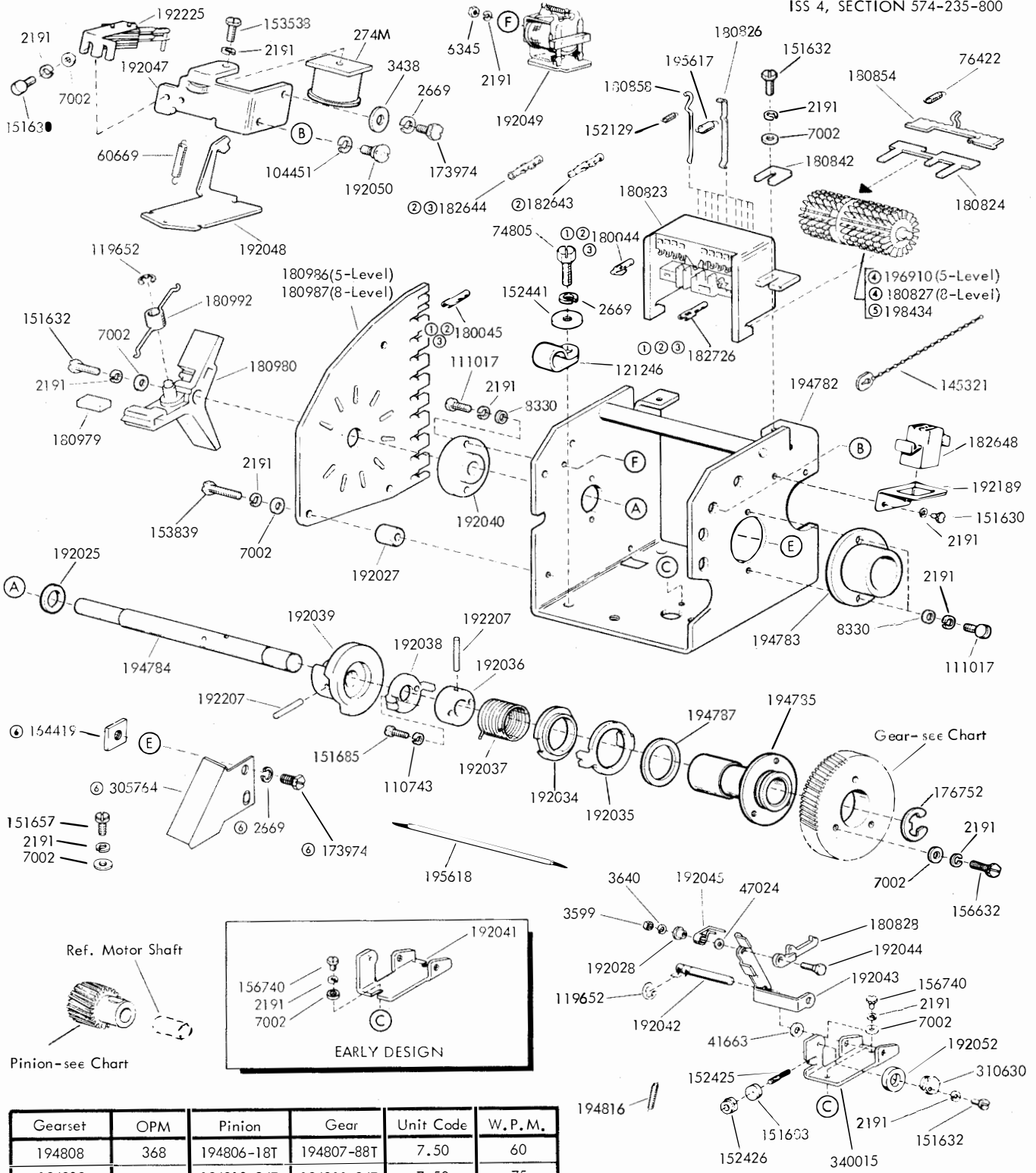


FIGURE 1 BASE AND MOTOR



Gearset	OPM	Pinion	Gear	Unit Code	W.P.M.
194808	368	194806-18T	194807-88T	7.50	60
194809	460	194810-24T	194811-94T	7.50	75
194815	600	194812-31T	194813-93T	7.50-11.0	100
199096	50 Baud	199097-14T	199098-63T	7.50	66
305047	368	305043-17T	305044-84T	7.42	60
305048	600	305045-31T	305046-94T	7.42	100

- ① 194794 Cable w/Terminals
- ② 198402 Cable Assembly
- ③ 192051 Cable Assembly
- ④ Uncoded Drum
- ⑤ Coded Drum w/ 1 A/c
- ⑥ For 3 cycle operation
- ⑦ (8-Level Only)

FIGURE 2. ANSWER BACK MECHANISM

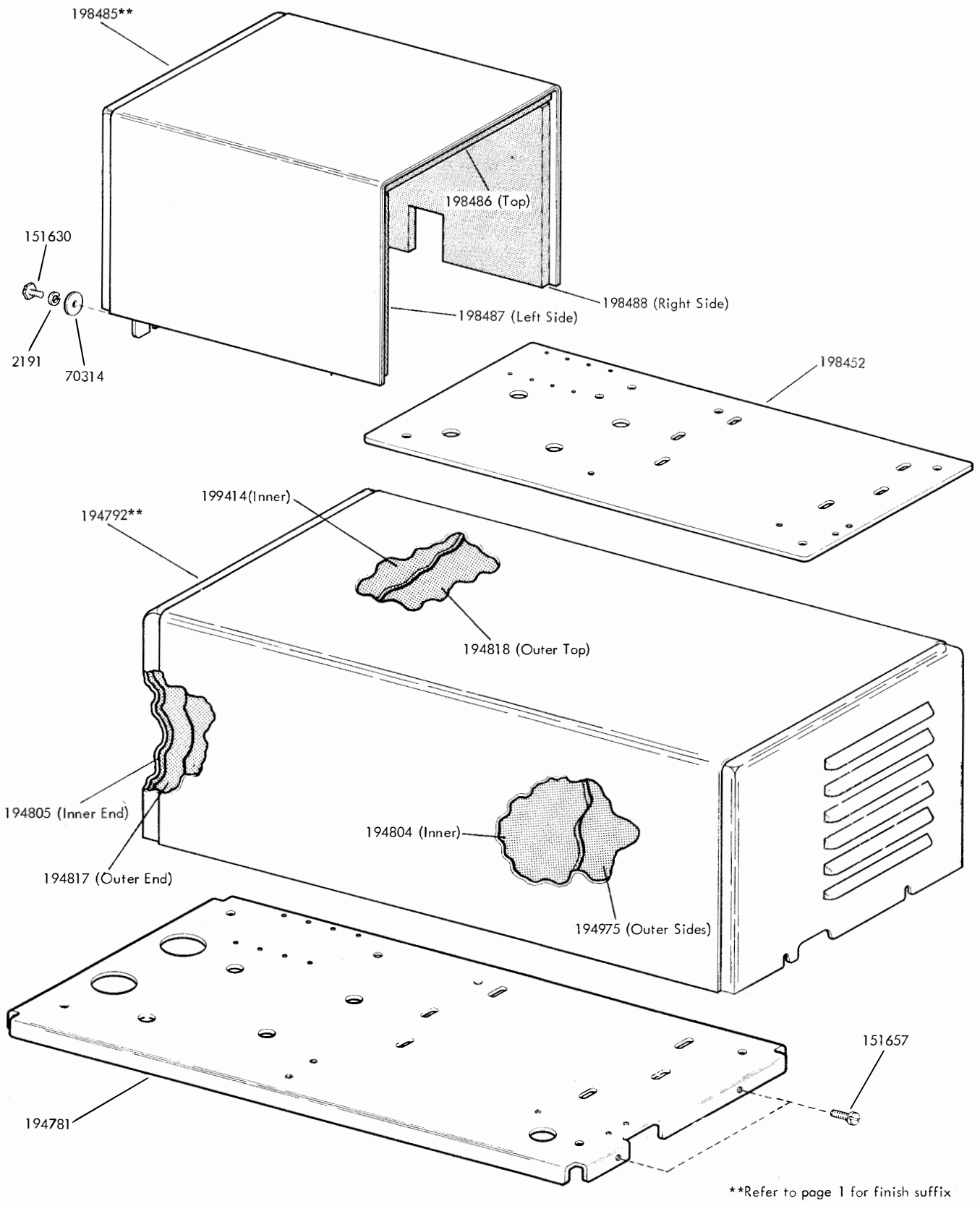


FIGURE 3. COVERS, BASES AND PADS

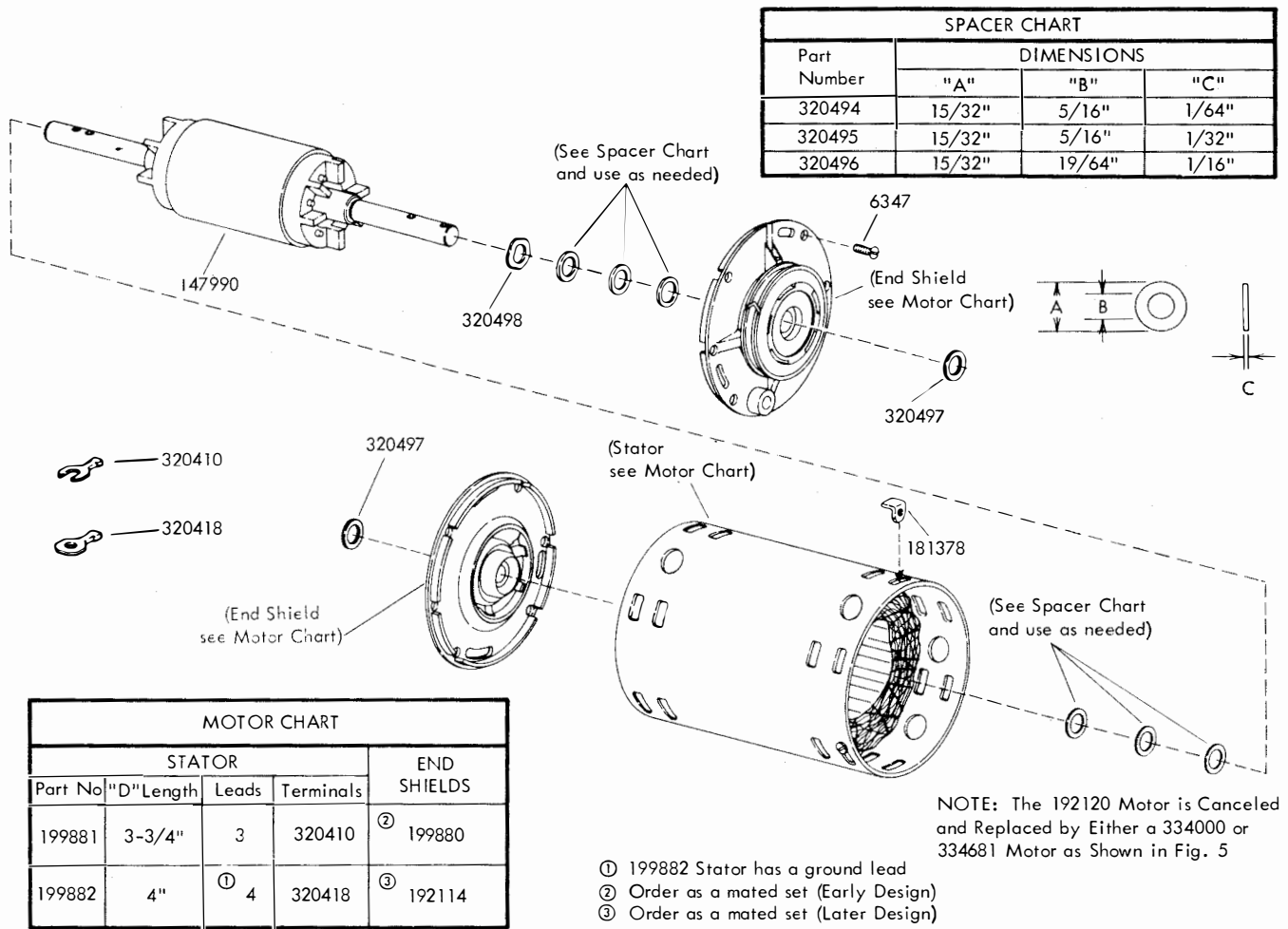
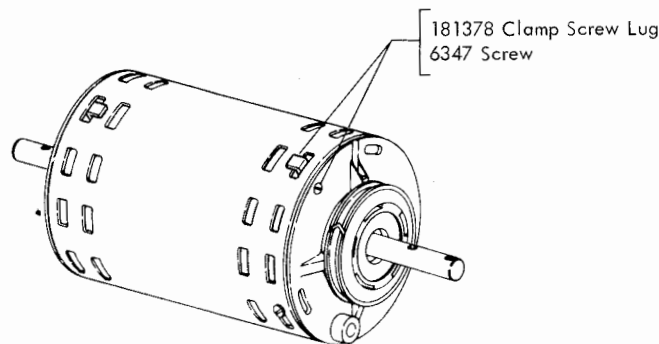


FIGURE 4. MOTOR COMPONENTS



NOTE: Both Motors are Functionally Identical and Only Differ in Appearance, Either One May be Used.

FIGURE 5. 334000 AND 334681 SYNCHRONOUS MOTORS

NUMERICAL INDEX

Part Number	Description and Page Number	Part Number	Description and Page Number	Part Number	Description and Page Number
274M	Coil, Magnet 3	152426	Nut, 6-40 Self-Locking 3	192027	Spacer, Disc 3
2191	Lockwasher 2,3,4	152441	Washer, Flat 3	192028	Bushing, Shoulder 3
2669	Lockwasher 2,3	153442	Screw, 10-32 x 1/2 Hex 2	192034	Bearing, Clutch 3
3438	Washer, Flat 2,3	153538	Screw, 6-40 x 7/16 Hex 3	192035	Lever, Clutch Release 3
3599	Nut, 4-40 Hex 3	153631	Network, Spark Suppression 2	192036	Drum, Shaft 3
3640	Lockwasher 3	153839	Screw, 6-40 x 5/8 Hex 3	192037	Spring, Right Clutch 3
6345	Nut, 6-32 Hex 3	155753	Sleeve, 1/8 ID x 1/2"	192038	Lever, Stop 3
6347	Screw, 6-32 x 3/8 Rd 5		Lg Insulating 2	192039	Cam, Feed 3
7002	Washer, Flat 2,3	155755	Sleeve, 11/64 ID x 5/8"	192040	Bearing 3
8330	Washer, Flat 3		Lg Insulating 2	192041	Bracket, Feed Lever 3
41663	Washer, Flat 3	156632	Screw, 6-40 x 13/32 Hex 3	192042	Shaft 3
47024	Washer, Flat 3	156740	Screw, 6-40 x 7/32 Hex 3	192043	Bail, Feed 3
60669	Spring 3	156768	Screw, 8-32 x 9/32 Hex 2	192044	Screw, 4-40 Shoulder 3
70314	Washer, Flat 4	164419	Plate, Nut 3	192045	Spring, Feed Pawl 3
74805	Screw, 10-32 x 3/4 Hex 3	172824	Foot, Rubber 2	192047	Bracket, Yoke 3
74807	Nut, 10-32 Shoulder Hex 2	173974	Screw, 10-32 x 5/16 Hex 3	192048	Armature, Clutch Trip 3
76422	Spring 3	176673	Suppressor, Spark 2	192049	Relay 3
91768	Jumper, 3-1/2" Black 2	176752	Ring, Retaining 3	192050	Screw, 10-32 Shoulder 3
104451	Lockwasher 3	180044	Terminal, Tab Type 3	192051	Cable w/Terminals 3
110126	Lockwasher 2	180045	Terminal, Tab Type 3	192052	Ring 3
110743	Lockwasher 3	180823	Terminal, Contact 3	192114	Shield Assembly 5
111017	Screw, 6-40 x 5/16 Fil 3	180824	Contact, Common 3	192120	Motor, 115V AC Synchronous 5
111289	Block, Terminal 2	180826	Lever, Detent 3	192189	Bracket, Connector 3
116783	Holder, Fuse 2	180827	Drum, Answer-Back 3	192207	Pin, Roll 3
119652	Ring, Retaining 3	180828	Pawl, Feed 3	192225	Contact Assembly 3
121242	Clamp, 1/8 ID Cable 2	180842	Spacer, .050" Thk 3	192238	Bracket, Motor Mounting 2
121243	Clamp, 3/16 ID Cable 2	180854	Brace 3	194781	Base w/Pad 2,4
121246	Clamp, 3/8 ID Cable 3	180858	Contact, Wire 3	194782	Bracket, Mounting 3
121248	Clamp, 1/2 ID Cable 2	180979	Brush, Carbon 3	194783	Bearing 3
121426	Jumper, 7-3/4" Black 2	180980	Holder, Brush 3	194784	Shaft, Main 3
122207	Strap Assembly 2	180986	Disc, 5 Level 3	194785	Sleeve, Clutch 3
125231	Nut, 10-32 Hex 2	180987	Disc, 8 Level 3	194787	Washer, Flat 3
143306	Fuse, SL-BL 1 Amp 2	180992	Spring, Torsion 3	194788	Bracket, Capacitor 2
145321	Tie, Cable 3	181151	Fan 2	194790	Plate, Nut 2
147990	Rotor 5	181378	Lug, Clamp Screw 5	194791	Plate, Nut 2
151335	Stud 2	182540	Connector, 15 Pt Plug Type 2	194792**	Cover w/Pads 4
151603	Spacer 3	182643	Terminal, Plug Type 3	194794	Cable w/Terminals 2,3
151620	Strap, Motor Mounting 2	182644	Terminal, Receptacle Type 3	194804	Pad, Inner 4
151621	Screw, 6-32 x 3/4 Rd 2	182648	Connector, 12 Pt Receptacle Type 2,3	194805	Pad, Inner End 4
151622	Nut, 6-32 Sq 2	182726	Terminal, Receptacle Type 3	194806	Pinion, 18T 3
151630	Screw, 6-40 x 1/4 Hex 2,3,4	185834	Plate, Identification 2	194807	Gear, 88T 3
151631	Screw, 6-40 x 5/16 Hex 2	192007	Terminal, Tab Type 2	194808	Gearset, 60 WPM 3
151632	Screw, 6-40 x 5/16 Hex 3	192019	Capacitor, 3 MFD 2	194809	Gearset, 75 WPM 3
151657	Screw, 6-40 x 1/4 Fil 3,4	192025	Washer, Flat 3	194810	Pinion, 24T 3
151685	Screw, 4-40 x 5/16 Fil 3			194811	Gear, 94T 3
151723	Screw, 10-32 x 3/8 Hex 2			194812	Pinion, 31T 3
152129	Spring 3			194813	Gear, 93T 3
152425	Post, Spring 3				

**Refer to page 1 for finish suffix

NUMERICAL INDEX (Continued)

Part Number	Description and Page Number	Part Number	Description and Page Number	Part Number	Description and Page Number
194815	Gearset, 100 WPM 3	198452	Plate, Base 4	305047	Gearset 3
194816	Spring 3	198485**	Cover w/Pads 4	305048	Gearset 3
194817	Pad, Outer End 4	198486	Pad, Top 4	305764	Guard, Gear 3
194818	Pad, Outer Top 4	198487	Pad, Side 4	310630	Bushing, Eccentric 3
194975	Pad, Outer Side 4	198488	Pad, Side 4	320410	Terminal, Spade Type 2,5
194976	Insulator, Terminal 2	199096	Gearset, 67 WPM 3	320418	Terminal, Ring Type 2,5
194977	Pad, Base 2	199097	Pinion, 14T 3	320494	Spacer, .015" Thk 5
194979	Cap, Terminal 2	199098	Gear, 63T 3	320495	Spacer, .031" Thk 5
195617	Spring 3	199414	Panel 4	320496	Spacer, .062" Thk 5
195618	Jumper, 5-1/4" White-Purple 3	199880	Shield Assembly 5	320497	Washer, Rubber 5
195988	Bracket 2	199881	Stator 5	320498	Washer, Spring 5
196910	Drum, Answer-Back 3	199882	Stator 5	328194	Bushing, Shoulder 2
198402	Cable Assembly 2,3	305043	Pinion, 17T 3	334000	Motor, Synchronous 5
198434	Drum, Coded 3	305044	Gear, 84T 3	334681	Motor, 115V AC Synchronous 1,5
		305045	Pinion, 31T 3	340015	Bracket, Feed Bail 3
		305046	Gear, 94T 3		

**Refer to page 1 for finish suffix

