

35 TYPING REPERFORATOR BASE (LRB)
PARTS

FIGURE	CONTENTS	PAGE
1	Reperforator Base (Double Plate)	2
2	Reperforator Base Components	3
3	192909 Tape Winder (1" Tape)	4
4	Tape Container (1" Tape)	5
5	159377 Modification Kit to provide Single Speed Drive	6
6	Auxiliary Typing Reperforator Base and Motor	7
7	Auxiliary Typing Reperforator Base Container	8
8	195815 Gear Bracket Assembly	9
9	Motor Control Components	10
10	Terminal Block and Bracket Mounting	11
11	Cable Components	12
	Numerical Index	13

PAINT FINISH CHART

-For parts and assemblies requiring a paint finish-

Color	Textured Vinyl	Smooth Vinyl
Gray Green	GA (45)	
Light Gray		HB (68)
Light Olive Gray		HF (46)

Suffix to be applied following the part number. Number in parentheses () indicates Bell System Code.

NOTE:

When ordering parts from this section,
prefix each number with the letters TP.

Unit Description	Teletype Code	Bell System Code
Typing Reperforator Base	LRB300**	35A
	LRB305**	35B
	LRB306**	35C
Gear Set	161656	35A

Prepared for American Telephone and Telegraph Company by Teletype Corporation.

© 1958 and 1959 by Teletype Corporation.

All rights reserved.

Printed in U. S. A.

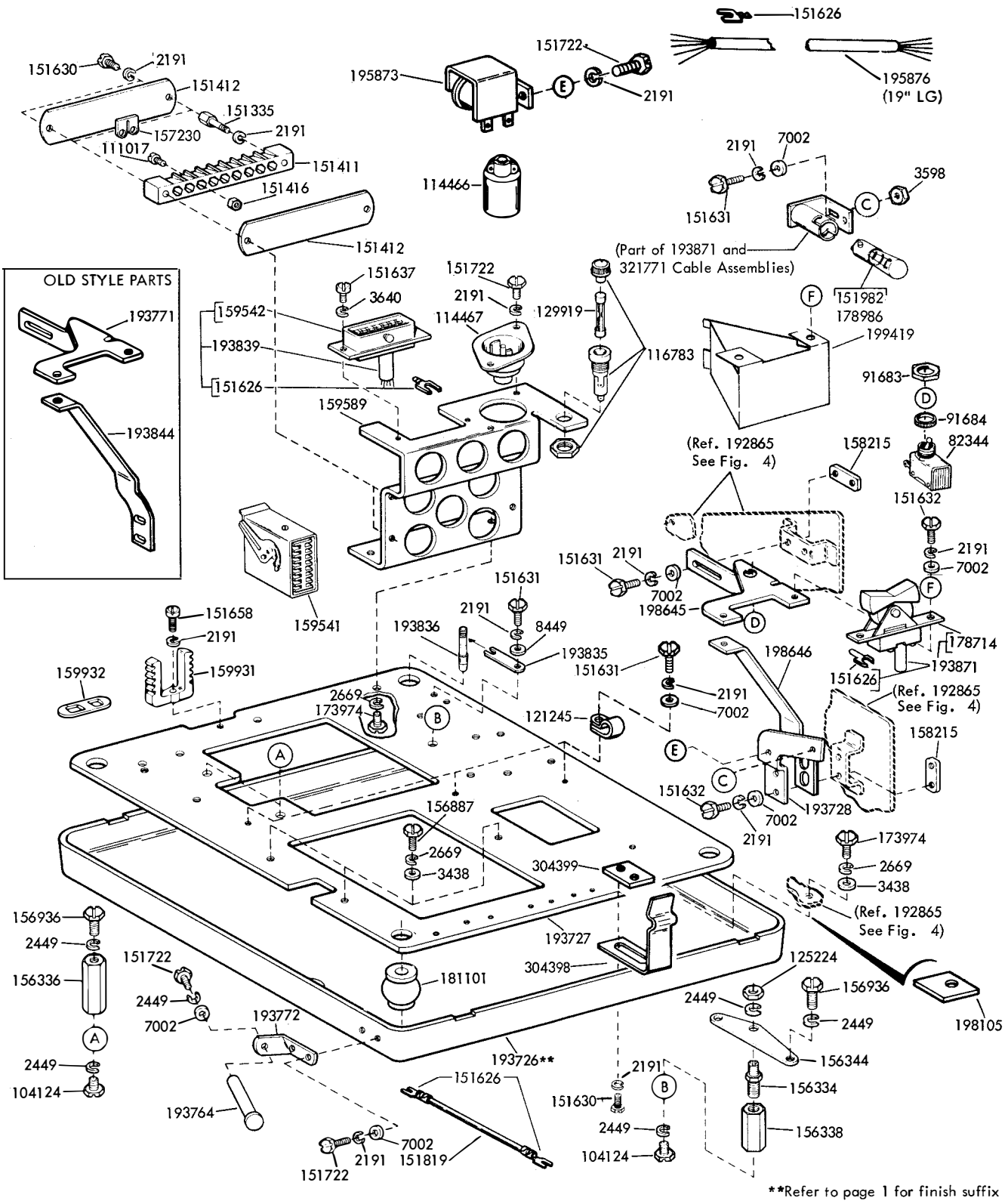
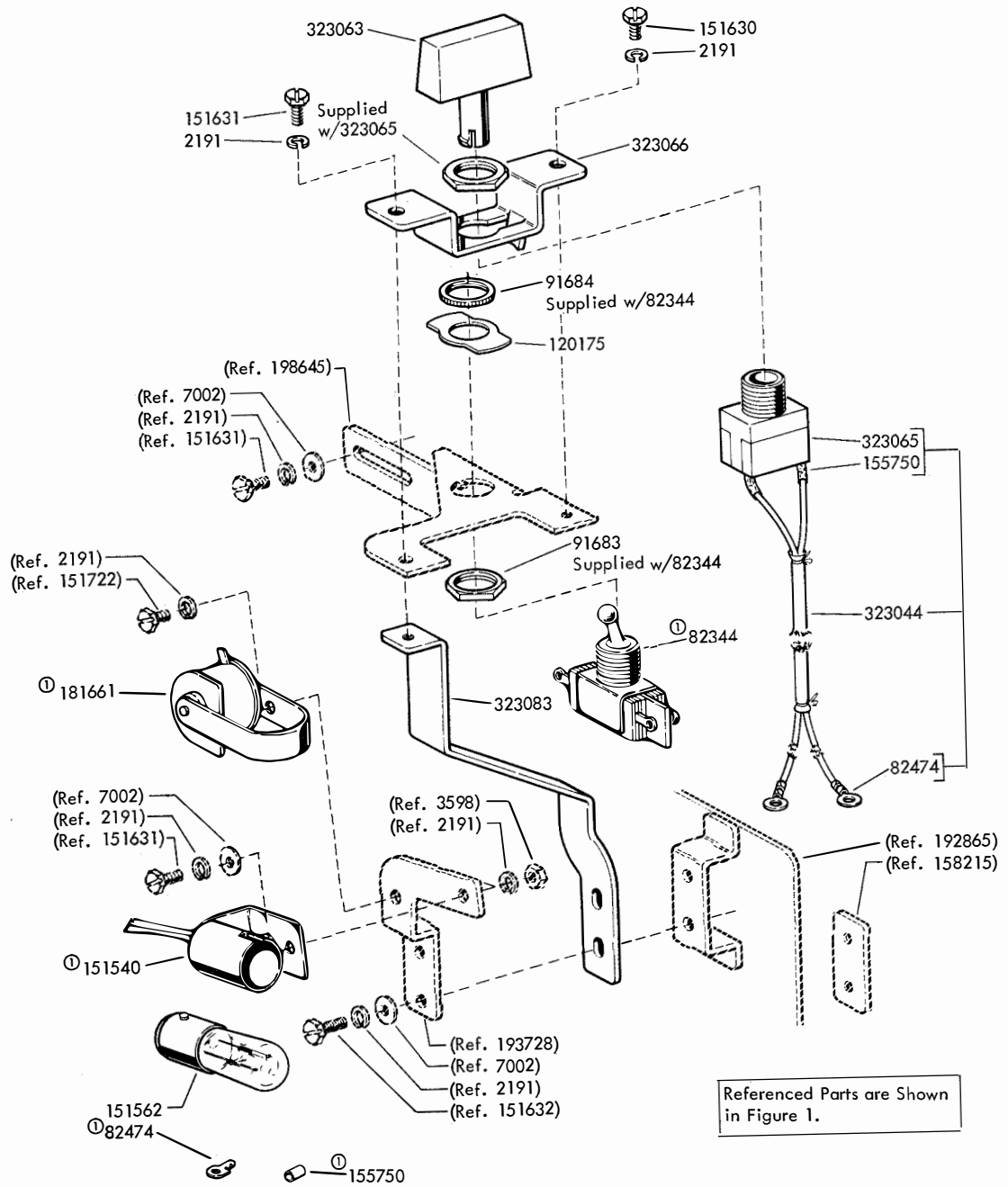


FIGURE 1. REPERFORATOR BASE (DOUBLE PLATE)



① 323043 Cable Assembly

FIGURE 2. REPERFORATOR BASE COMPONENTS

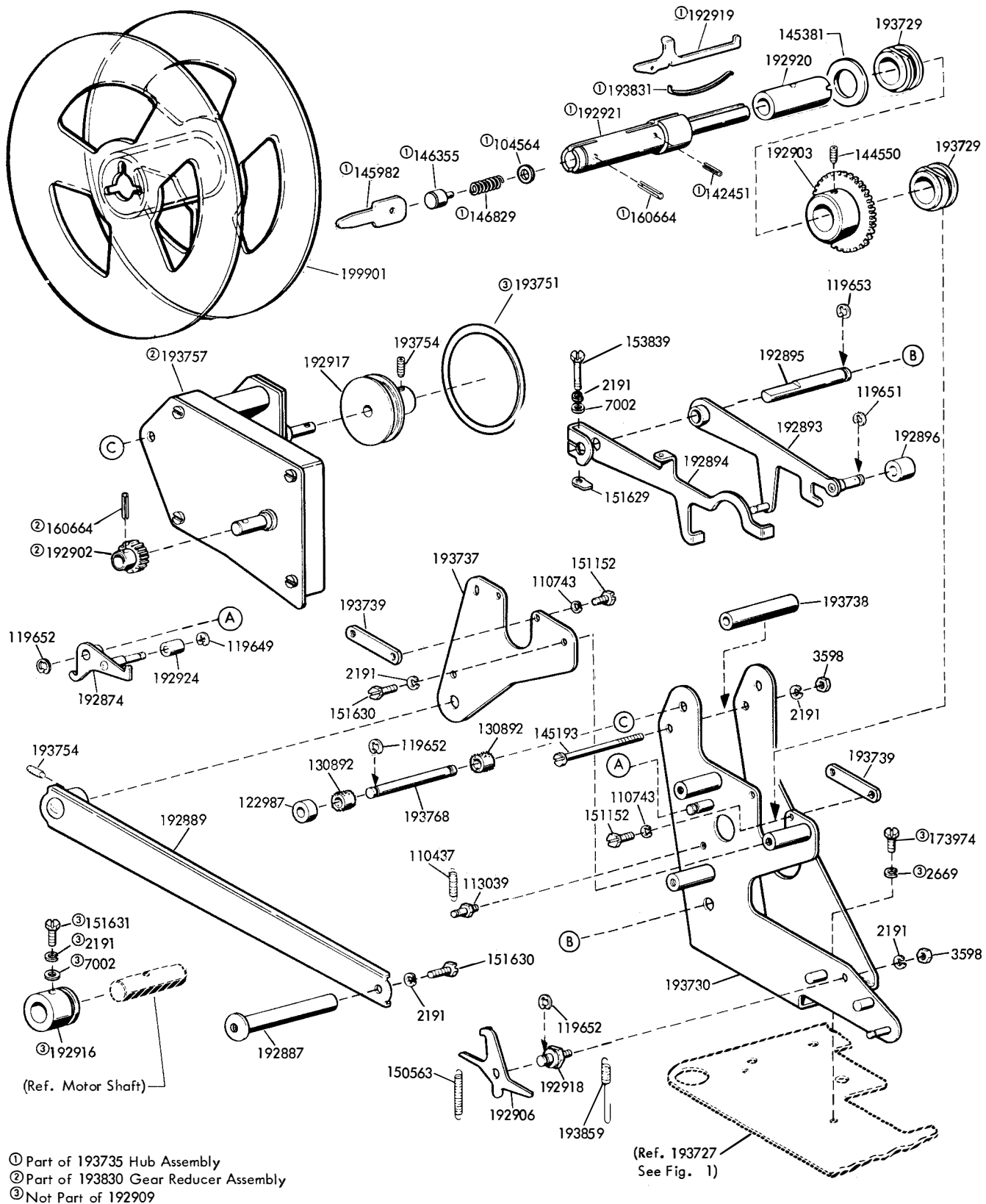


FIGURE 3. 192909 TAPE WINDER (1" TAPE)

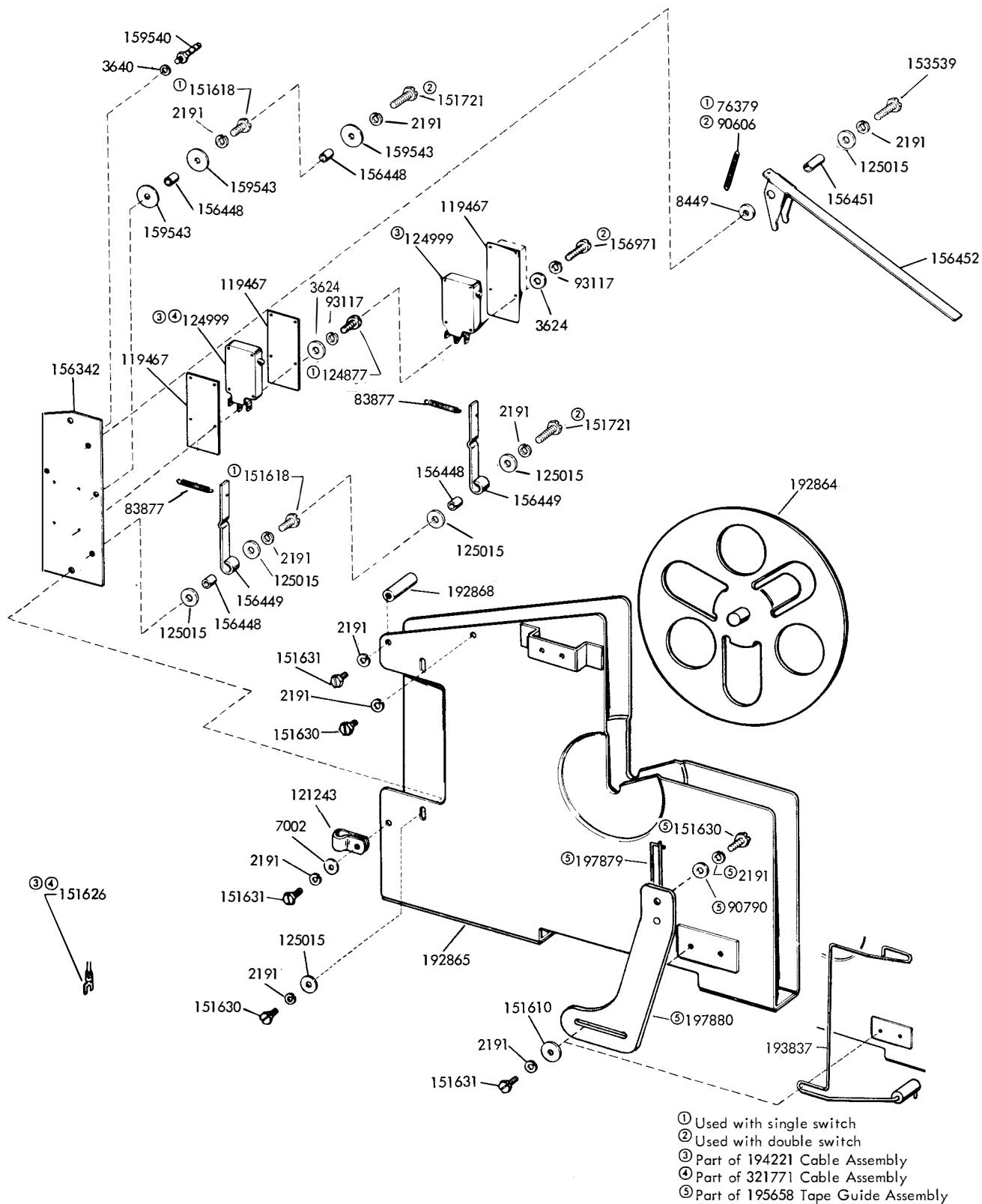
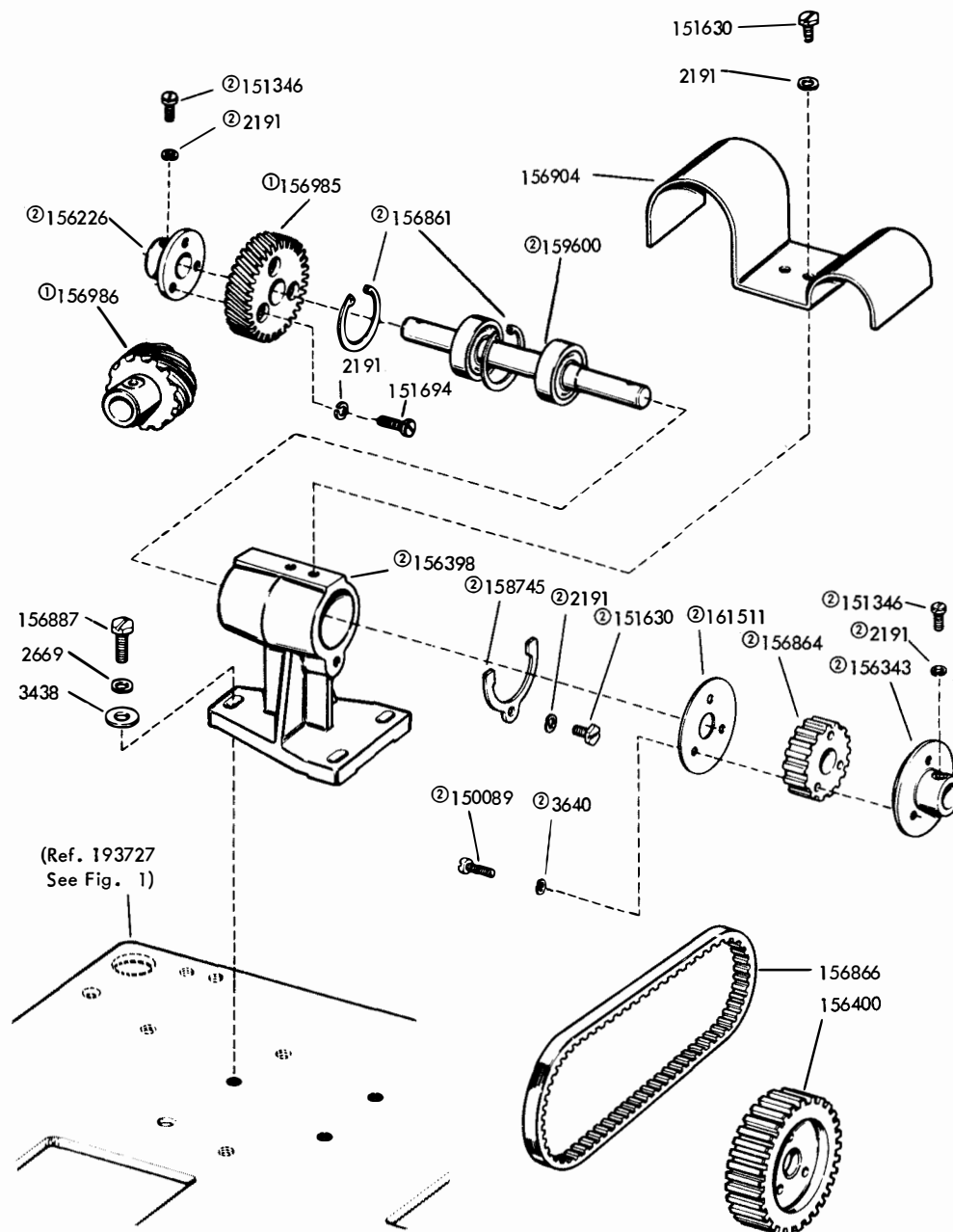


FIGURE 4. TAPE CONTAINER (1" TAPE)



① 161656 Gear Set for 100 WPM Operation
(Not part of 159377 Modification Kit)
② Part of 156865 Intermediate Drive Assembly

FIGURE 5. 159377 MODIFICATION KIT TO PROVIDE SINGLE SPEED DRIVE

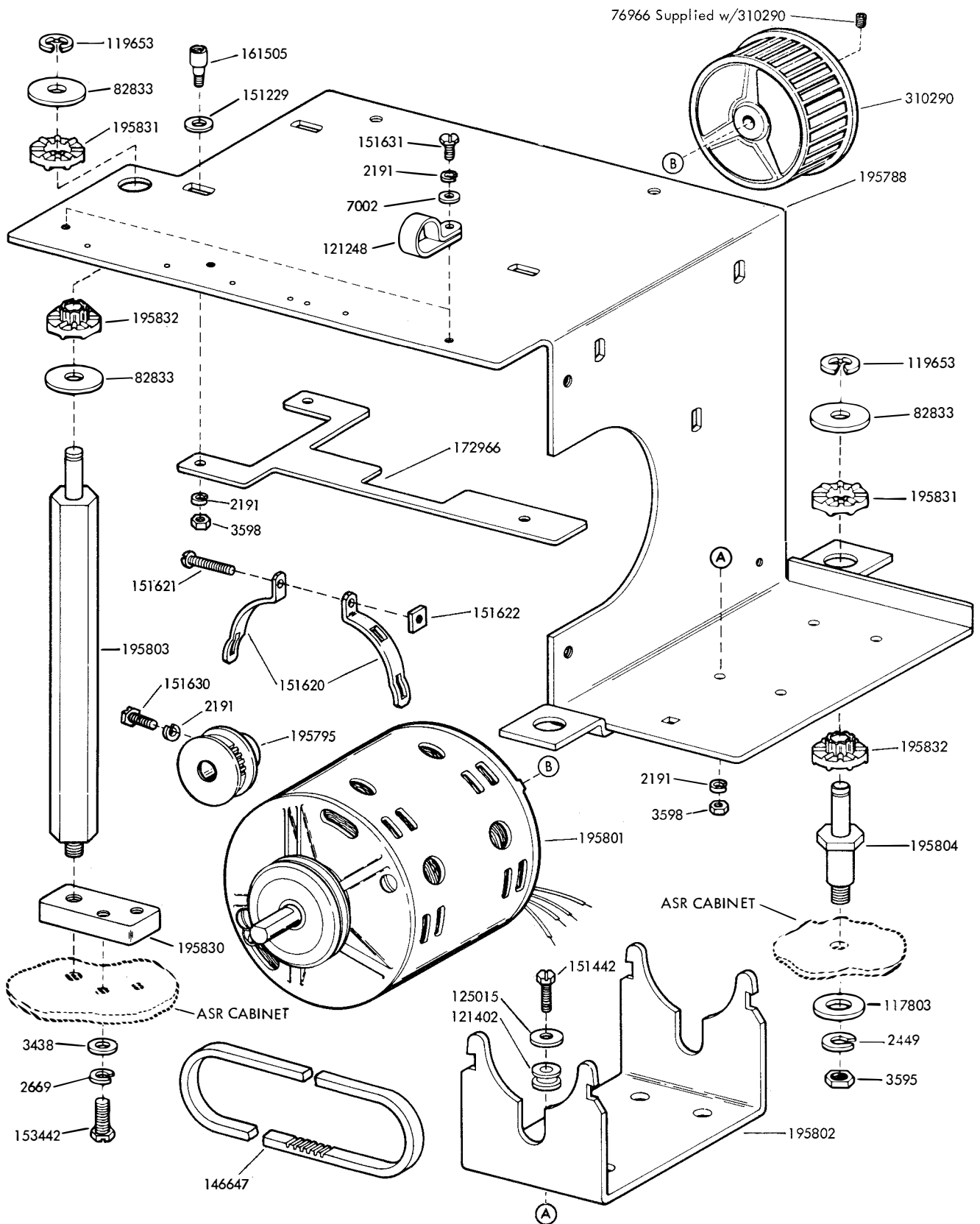


FIGURE 6. AUXILIARY TYPING REPERFORATOR BASE AND MOTOR

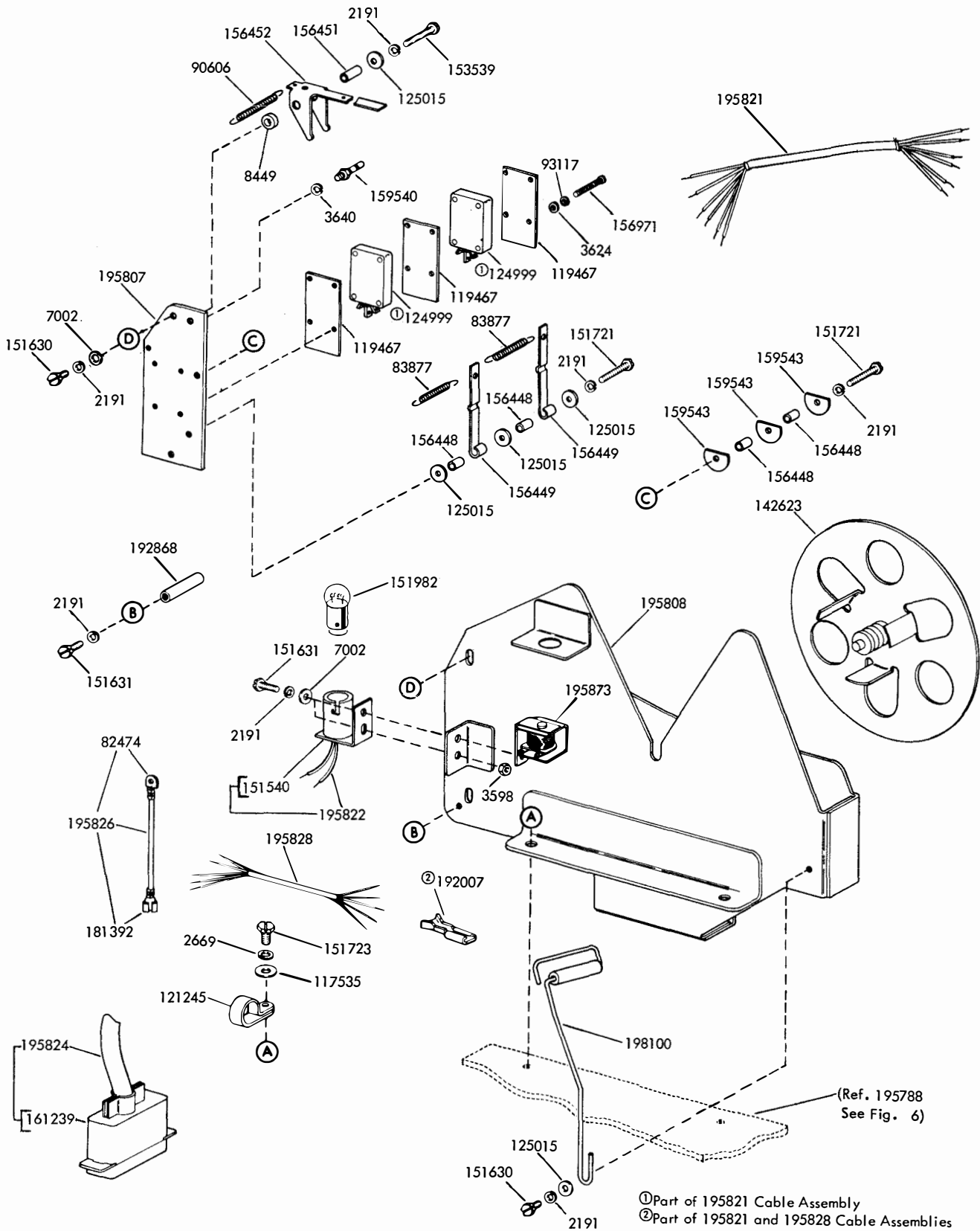


FIGURE 7. AUXILIARY TYPING REPERFORATOR TAPE CONTAINER

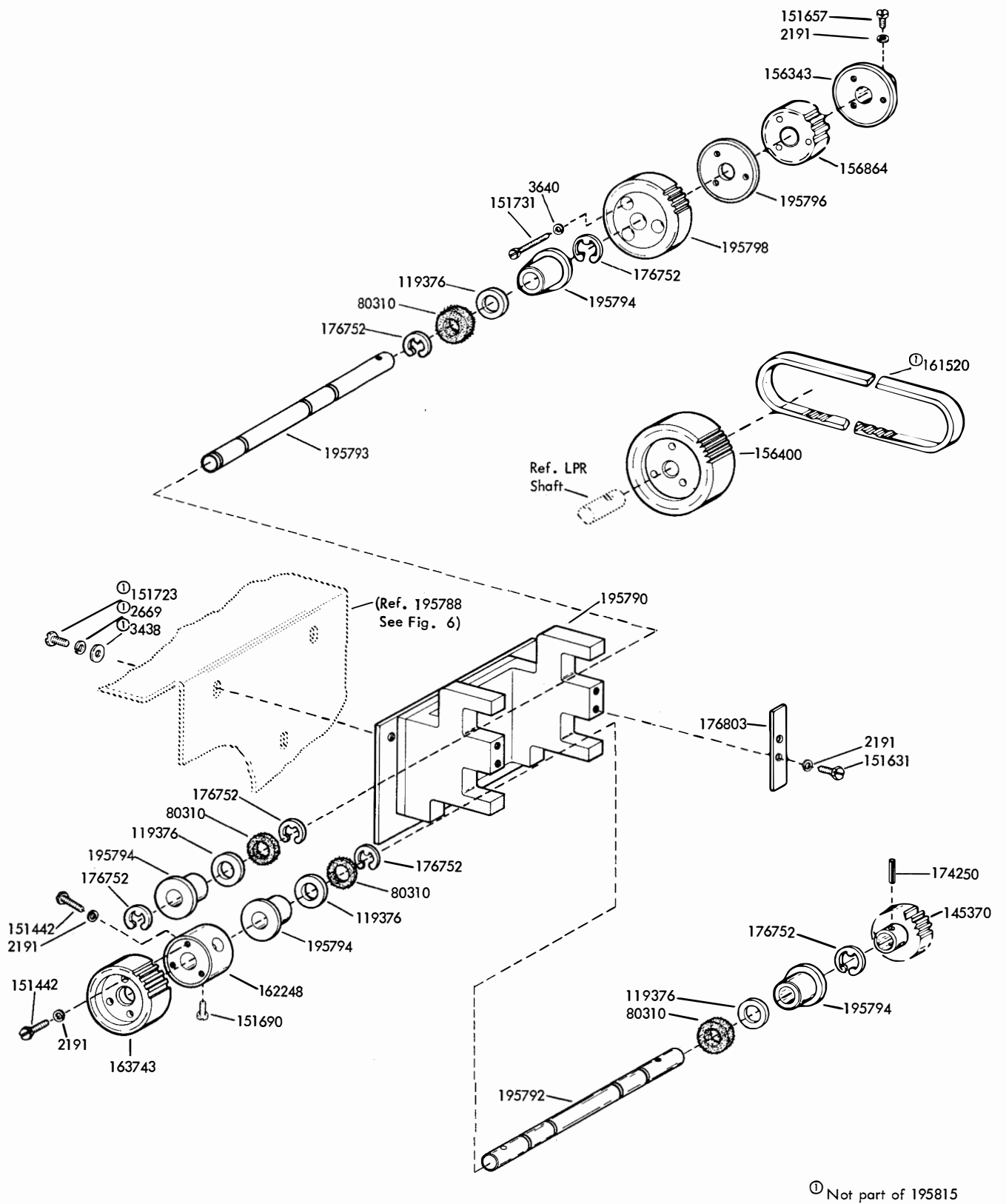


FIGURE 8. 195815 GEAR BRACKET ASSEMBLY

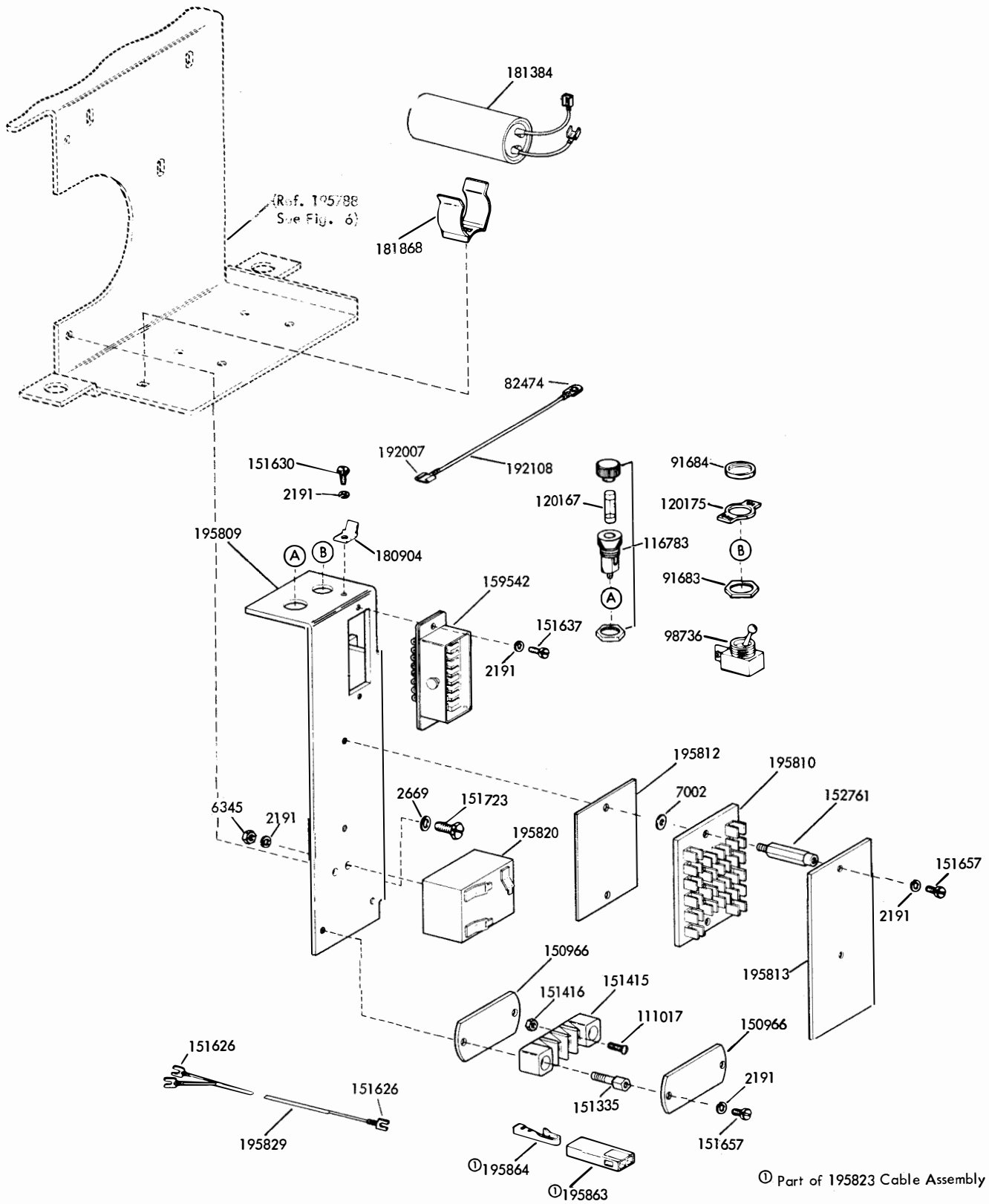


FIGURE 9. MOTOR CONTROL COMPONENTS

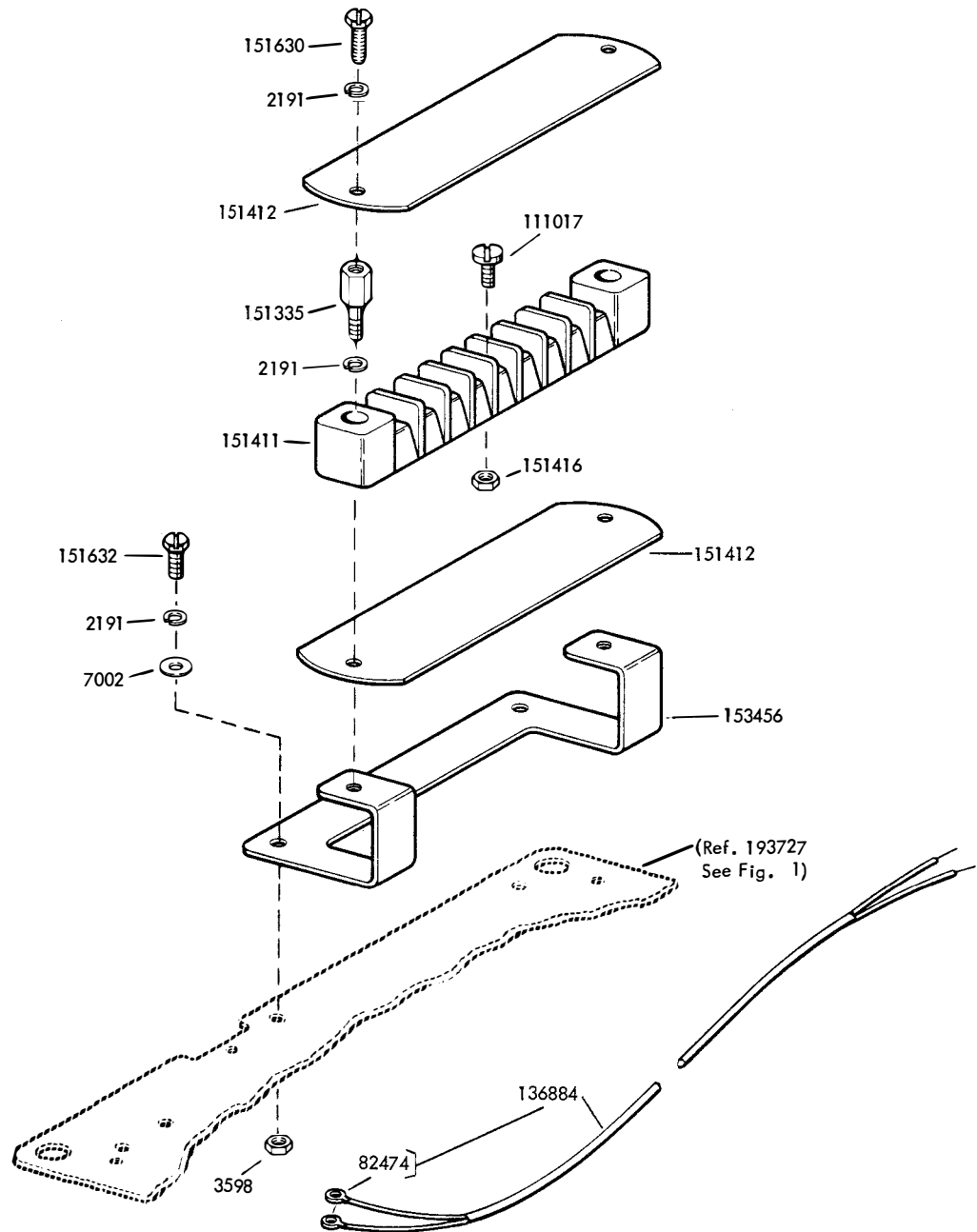


FIGURE 10. TERMINAL BLOCK AND BRACKET MOUNTING

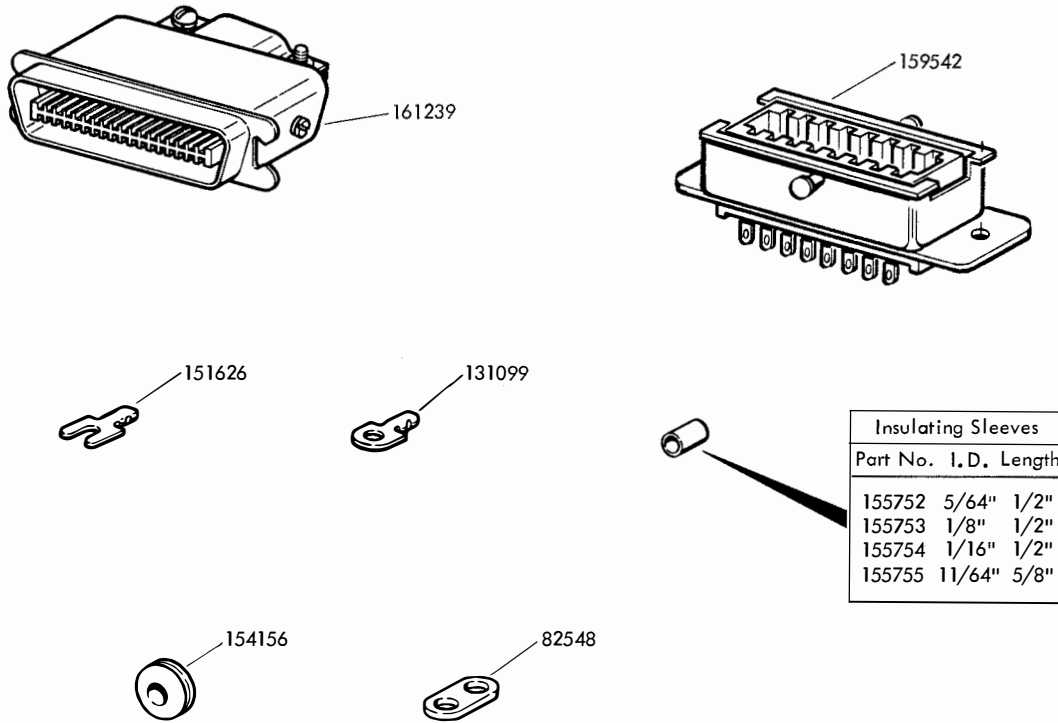


FIGURE 11. CABLE COMPONENTS

NUMERICAL INDEX

Part Number	Description and Page Number	Part Number	Description and Page Number	Part Number	Description and Page Number
2191	Washer, Lock 2 to 11	150089	Screw, 4-40 x 1/2 Fil 6	156864	Pulley, 16T 6, 9
2449	Washer, Lock 2, 7	150563	Spring 4	156865	Drive Assembly, Intermediate 6
2669	Washer, Lock 2, 4, 6, 7 to 10	150966	Insulator, Terminal Block 10	156866	Belt, 55T 6
3438	Washer, Flat 2, 6, 7, 9	151152	Screw, 4-40 x 3/16 Hex 4	156887	Screw, 10-32 x 9/16 Hex 2, 6
3595	Nut, 1/4-32 Hex 7	151229	Washer, Flat 7	156904	Guard 6
3598	Nut, 6-40 Hex 2, 3, 4, 7, 8, 11	151335	Stud 2, 10, 11	156936	Screw, 1/4-32 x 5/16 Hex 2
3624	Washer, Flat 5, 8	151346	Screw, 6-40 x 3/8 Fil 6	156971	Screw, 2-56 x 3/4 Fil 5, 8
3640	Washer, Lock 2, 5, 6, 8, 9	151411	Block, Terminal 2, 11	156985	Gear, 42T 6
6345	Nut, 6-32 Hex 10	151412	Insulator, Terminal Block 2, 11	156986	Pinion, 14T 6
7002	Washer, Flat 2 to 5, 7, 8, 10, 11	151415	Block, Terminal 10	157230	Jumper, 6" Black 2
8449	Spacer, .094" Thk 2, 5, 8	151416	Nut, 6-40 Hex 2, 10, 11	158215	Plate, Nut 2, 3
76379	Spring 5	151442	Screw, 6-40 x 1/2 Hex 7, 9	158745	Clamp, Bearing 6
76966	Screw, 10-32 Set 7	151540	Lampholder 3, 8	159377	Modification Kit 1, 6
80310	Washer, Felt 9	151562	Lamp, 115V Incandescent 3	159540	Post, Spring 5, 8
82344	Switch, SP-DT Toggle 2, 3	151610	Washer, Flat 5	159541	Connector, 16 Pt Plug 2
82474	Terminal 3, 8, 10, 11	151618	Screw, 6-40 x 7/16 Fil 5	159542	Connector, 16 Pt Receptacle 2, 10, 12
82548	Insulator, .062" Thk 12	151620	Strap, Motor Mounting 7	159543	Washer, Flat 5, 8
82833	Washer, Flat 7	151621	Screw, 6-32 x 3/4 Rd 7	159589	Bracket, Mounting 2
83877	Spring 5, 8	151622	Nut, 6-32 Sq. 7	159600	Shaft w/Bearing 6
90606	Spring 5, 8	151626	Terminal 2, 5, 10, 12	159931	Clamp 2
90790	Washer, Flat 5	151629	Nut, 6-40 Lug 4	159932	Keeper 2
91683	Nut, 15/32-32 Hex 2, 3, 10	151630	Screw, 6-40 x 1/4 Hex 2 to 8, 10, 11	160664	Pin, Roll 4
91684	Nut, 15/32-32 Ring 2, 3, 10	151631	Screw, 6-40 x 5/16 Hex 2 to 5, 7, 8, 9	161239	Connector, 36 Pt Plug 8, 12
93117	Washer, Lock 5, 8	151632	Screw, 6-40 x 3/8 Hex 2, 3, 11	161505	Stud 7
98736	Switch, SP-ST Toggle 10	151637	Screw, 4-40 x 1/4 Fil 2, 10	161511	Retainer, Belt 6
104124	Screw, 1/4-32 x 11/32 Hex 2	151657	Screw, 6-40 x 1/4 Fil 9, 10	161520	Belt, 64T 9
104564	Washer, Flat 4	151658	Screw, 6-40 x 5/16 Fil 2	161656	Gear Set, 100 WPM 1, 6
110437	Spring 4	151690	Screw, 10-32 x 5/16 Fil 9	162248	Hub 9
110743	Washer, Lock 4	151694	Screw, 6-40 x 11/32 Fil 6	163743	Pulley, 32T 9
111017	Screw, 6-40 x 5/16 Fil 2, 10, 11	151721	Screw, 6-40 x 3/4 Hex 5, 8	172966	Plate, T 7
113039	Post, Spring 4	151722	Screw, 6-40 x 3/16 Hex 2, 3	173974	Screw, 10-32 x 5/16 Hex 2, 4
114466	Connector, 3 Pt Receptacle 2	151723	Screw, 10-32 x 3/8 Hex 8, 9, 10	174250	Pin, Roll 9
114467	Connector, 3 Pt Plug 2	151731	Screw, 4-40 x 7/8 Fil 9	176752	Ring, Retaining 9
116783	Holder, Fuse 2, 10	151819	Jumper, 3" Black 2	176803	Plate, Left Bearing 9
117535	Washer, Flat 8	151982	Lamp, 6V Incandescent 2, 8	178714	Switch, Rocker Type 2
117803	Washer, Flat 7	152761	Stud 10	178986	Lamp, 115V Incandescent 2
119376	Washer, Flat 9	153442	Screw, 10-32 x 1/2 Hex 7	180904	Tab, Terminal 10
119467	Insulator, .032" Thk 5, 8	153456	Bracket 11	181101	Isolator, Vibrating 2
119649	Ring, Retaining 4	153539	Screw, 6-40 x 11/16 Hex 5, 8	181384	Capacitor, 88-108 MFD 10
119651	Ring, Retaining 4	153839	Screw, 6-40 x 5/8 Hex 4	181392	Terminal, Tab Type 8
119652	Ring, Retaining 4	154156	Grommet, Rubber 12	181661	Buzzer, 115V AC 3
119653	Ring, Retaining 4, 7	155750	Sleeve, 3/32 ID x 1/2" Lg	181868	Clip, Speed 10
120167	Fuse, SL-BL 3.2 Amp 10	155752	Insulating 2	192007	Terminal, Tab Type 8, 10
120175	Plate, On-Off 3, 10	155753	Sleeve, 5/64 ID x 1/2" Lg	192108	Jumper, 4-1/2" Slate 10
121243	Clamp, 3/16 ID Cable 5	155754	Insulating 12	192864	Reel, Tape 5
121245	Clamp, 5/16 ID Cable 2, 8	155755	Sleeve, 1/8 ID x 1/2" Lg	192865	Container, Tape 2, 3, 5
121248	Clamp, 1/2 ID Cable 7	156226	Insulating 12	192868	Spacer, 1.197" Lg 5, 8
121402	Grommet, Rubber 7	156334	Hub 6	192874	Lever, Detent 4
122987	Spacer 4	156336	Stud 2	192887	Post, Guide Tape 4
124877	Screw, 2-56 x 1/2 Rd 5	156338	Post 2	192889	Arm w/Hub 4
124999	Switch, Sensitive 5, 8	156342	Plate 5	192893	Lever w/Post 4
125015	Washer, Flat 5, 7, 8	156343	Hub 6, 9	192894	Lever 4
125224	Nut, 1/4-32 Hex 2	156344	Bracket, Adjusting 2	192895	Shaft 4
129919	Fuse, 4 Amp SL-BL 2	156398	Holder Bearing 6	192896	Roller 4
130892	Washer, Felt 4	156400	Pulley, 28T 6, 9	192902	Gear, 16T 4
131099	Terminal, 5/8" Lg 12	156448	Bushing 5, 8	192903	Gear, 48T 4
136884	Cable w/Terminals 11	156449	Lever, Switch 5, 8	192906	Lever, Latch 4
142451	Pin, Roll 4	156451	Bushing 5, 8	192909	Winder Assembly, Tape 1, 4
142623	Reel, Tape 8	156452	Lever, Tape 5, 8	192916	Pulley 4
144550	Screw, 6-40 Set 4	156861	Ring, Retaining 6	192917	Pulley 4
145193	Screw, 6-40 x 1-1/2 Fil 4			192918	Stud, Latch Lever 4
145370	Gear, 42T 9			192919	Lever, Locking 4
145381	Washer, Thrust 4			192920	Sleeve 4
145982	Detent, Tape Reel 4			192921	Hub, Tape Winder 4
146355	Plunger 4			192924	Roller, Detent 4
146647	Belt, 50T 7			193726**	Pan, Lower Base 2
146829	Spring, Compression 4				

**Refer to page 1 for finish suffix

NUMERICAL INDEX (Continued)

Part Number	Description and Page Number	Part Number	Description and Page Number	Part Number	Description and Page Number
193727	Plate, Upper Base 2, 4, 6, 11	195788	Bracket, Mounting 7 to 10	195830	Plate 7
193728	Bracket, Light 2, 3	195790	Bracket 9	195831	Ring, Rubber 7
193729	Bearing, Sleeve 4	195793	Shaft, Driven 9	195832	Bushing 7
193730	Bracket, Gear Box Mounting 4	195794	Bearing, Flange 9	195863	Connector, 2 Pt Receptacle 10
193735	Hub Assembly, Tape Reel 4	195795	Pulley, 16T 7	195864	Terminal 10
193737	Plate, Tape Arm Pivot 4	195796	Retainer, Belt 9	195873	Buzzer, 6V 2, 8
193738	Spacer 4	195798	Gear, 63T 9	195876	Cable w/Terminals 2
193739	Bar, Bearing Retainer 4	195801	Motor, 115V AC Synchronous 7	197879	Guide, Tape 5
193751	Belt, Tape Winder Drive 4	195802	Bracket, Motor Mounting 7	197880	Bracket, Tape Guide 5
193754	Screw, 6-40 Set 4	195803	Stud, Mounting 7	198100	Guide, Tape 8
193757	Reducer, Gear 4	195804	Stud 7	198105	Spacer, .065" Thk 2
193764	Post, Tape Guide 2	195807	Plate 8	198645	Bracket, Switch Mounting 2, 3
193768	Pivot, Gear Box 4	195808	Container, Tape 8	198646	Bracket, Switch Support 2
193771	Bracket, Switch Mounting 2	195809	Bracket, Mounting 10	199419	Insulator 2
193772	Bracket, Tape Guide 2	195810	Board, Terminal 10	199901	Reel, Tape 4
193830	Reducer Assembly, Gear 4	195812	Insulator, .032" Thk 10	304398	Clip, Cover 2
193831	Spring, Flat 4	195813	Insulator, .062" Thk 10	304399	Plate, Nut 2
193835	Spring, Ground Contact 2	195815	Bracket Assembly, Gear 1, 9	310290	Fan, Centrifugal 7
193836	Pin, Ground Contact 2	195820	Relay, Motor 10	321771	Cable Assembly 2, 5
193837	Guide, Tape 5	195821	Cable Assembly 8	323043	Cable Assembly 3
193839	Cable Assembly 2	195822	Cable Assembly, Lampholder 8	323044	Cable Assembly 3
193844	Bracket, Switch Support 2	195823	Cable Assembly 10	323063	Button 3
193859	Spring 4	195824	Cable Assembly 8	323065	Switch, Pushbutton 3
193871	Cable Assembly 2	195826	Jumper, 12" Black 8	323066	Plate, Switch 3
194221	Cable Assembly 5	195828	Cable w/Terminals 8	323083	Bracket 3
195658	Guide Assembly, Tape 5	195829	Cable w/Terminals 10		