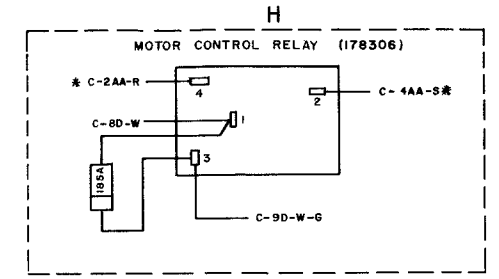
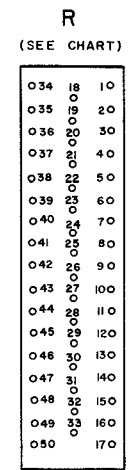
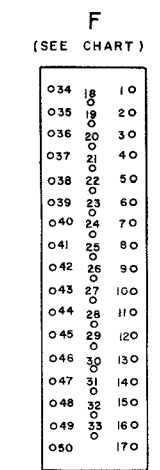
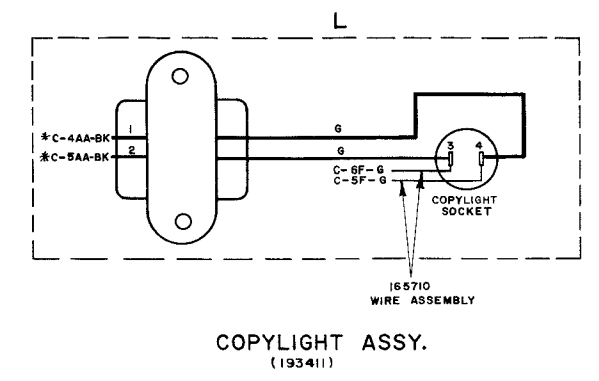
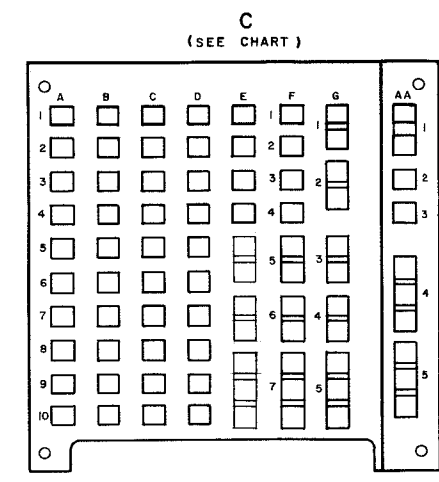


35 ELECTRICAL SERVICE UNIT

ACTUAL WIRING DIAGRAMS

CONTENTS	PAGE	ELECTRICAL SERVICE UNIT FOR 35 RECEIVE ONLY (RO) SET
1. GENERAL . . . . .	1	
2. ACTUAL WIRING DIAGRAMS . . . . .	1	
ELECTRICAL SERVICE UNIT FOR 35 RECEIVE ONLY (RO) SET . . . . .	1	2.01 Wiring diagram 4934WD covers the Electrical Service Unit LESU304 (Bell 35D) for 35 RO sets with no call control units. These sets are usually installed in switching centers.
ELECTRICAL SERVICE UNIT FOR 35 KEYBOARD SEND RECEIVE (KSR) SET . . . . .	1	2.02 Wiring diagram 5823WD covers the Electrical Service Unit LESU302 (Bell 35C) for 35 RO sets with call control units. These sets are usually placed at station locations.
ELECTRICAL SERVICE UNIT FOR 35 AUTOMATIC SEND RECEIVE (ASR) SET . . . . .	1	ELECTRICAL SERVICE UNIT FOR 35 KEYBOARD SEND RECEIVE (KSR) SET 2.03 Wiring diagram 4933WD covers the Electrical Service Unit LESU305 (Bell 35E) for 35 KSR sets with no call control units. These sets are usually installed in switching centers.
ELECTRICAL SERVICE UNIT FOR 35 RECEIVE ONLY TYPING REPERFORATOR (ROTR) SETS . . . . .	1	2.04 Wiring diagram 5821WD covers the Electrical Service Unit LESU300 (Bell 35A) for 35 KSR sets with call control units. These sets are usually placed at station locations.
1. GENERAL		ELECTRICAL SERVICE UNIT FOR 35 AUTOMATIC SEND RECEIVE (ASR) SET
1.01 The electrical components that are included on the 35 Electrical Service Units are illustrated in the attached actual wiring diagrams. The individual leads from each component are identified with their distant terminating points and wire color codes.		2.05 Wiring diagram 5822WD covers the Electrical Service Unit LESU301 (Bell 35B) for the 35 ASR set.
1.02 Use the listing in Paragraph 2 to determine the identification number of the actual wiring diagram which corresponds to a particular set. The diagrams appearing on the following pages are placed in numerical order.		ELECTRICAL SERVICE UNIT FOR 35 RECEIVE ONLY TYPING REPERFORATOR (ROTR) SET
1.03 Notes included on the diagrams explain the symbols used and point out any special conditions that should be observed.		2.06 Wiring diagram 5864WD covers the Electrical Service Unit LESU306 (Bell 35F) for the 35 ROTR set.
2. ACTUAL WIRING DIAGRAMS		2.07 Functional schematic diagrams for the above electrical service units will be found in the appropriate section for the set with which they are used.

- NO. NOTES
1. WIRING LEGEND:
- ← DISTANT TERMINATING AREA  
← DISTANT TERMINAL DESIGNATION  
A-I-W-BL  
← WIRE COLOR CODE
2. COLOR CODE:
- |                         |                        |
|-------------------------|------------------------|
| BK - BLACK              | W - BR - WHITE - BROWN |
| R - RED                 | W - O - WHITE - ORANGE |
| G - GREEN               | W - G - WHITE - GREEN  |
| BL - BLUE               | W - BL - WHITE - BLUE  |
| P - PURPLE              | W - P - WHITE - PURPLE |
| W - WHITE               | W - R - WHITE - RED    |
| O - ORANGE              | W - BK - WHITE - BLACK |
| S - SLATE               | BL - G - BLUE - GREEN  |
| Y - YELLOW              | BK - G - BLACK - GREEN |
| BR - BROWN              | R - BL - RED - BLUE    |
| BR - Y - BROWN - YELLOW |                        |
| Y - G - YELLOW - GREEN  |                        |
| R - Y - RED - YELLOW    |                        |
| BK - R - BLACK - RED    |                        |
3. UNIT WIRED FOR 117 VOLTS, 60 CYCLE AC POWER INPUT ONLY.
4. PLUG VIEWED FROM SOLDER TERMINAL ENDS.
5. FOR SCHEMATIC SEE 4935-B1, B2 AND B3WD.
6. \* ASTERISK DENOTES #18 GA. WIRE.
7. SELECTOR MAGNET DRIVER ACTUAL WIRING DIAGRAM IS 5826WD.

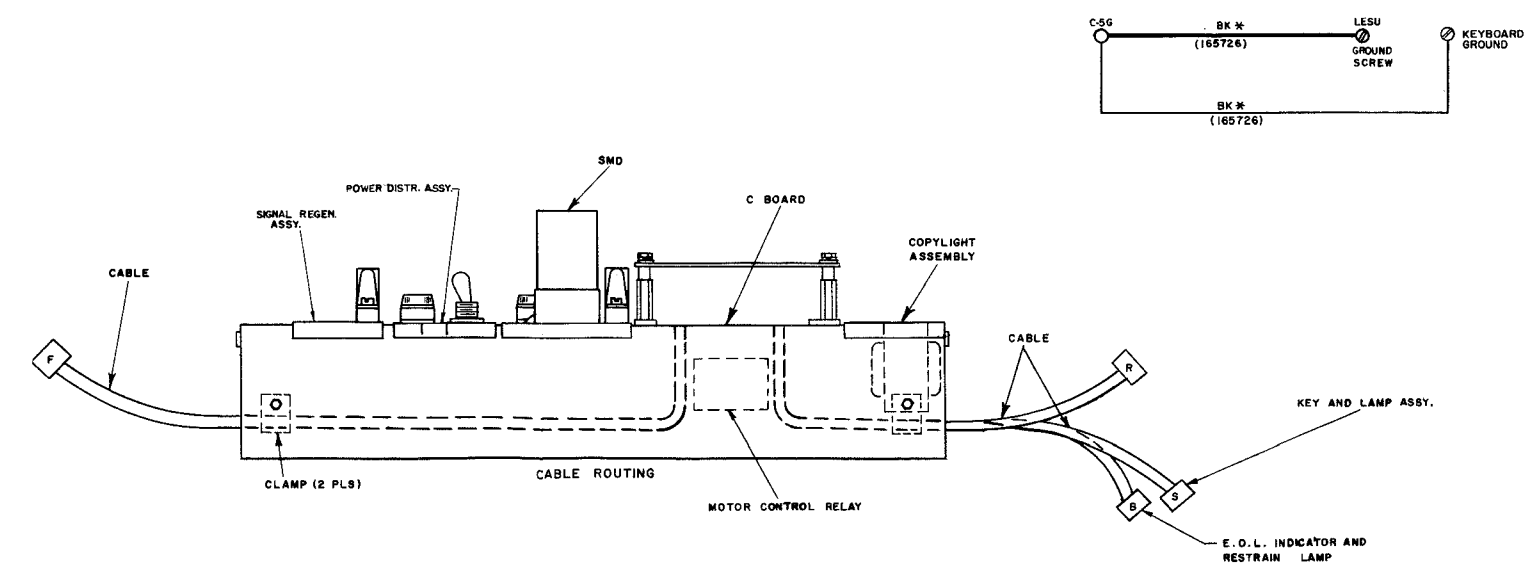
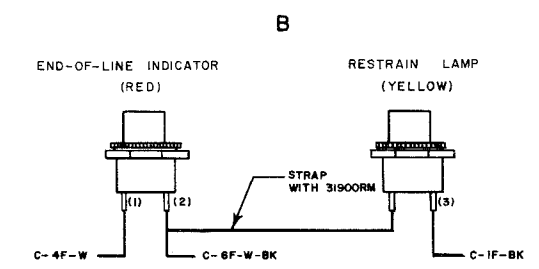
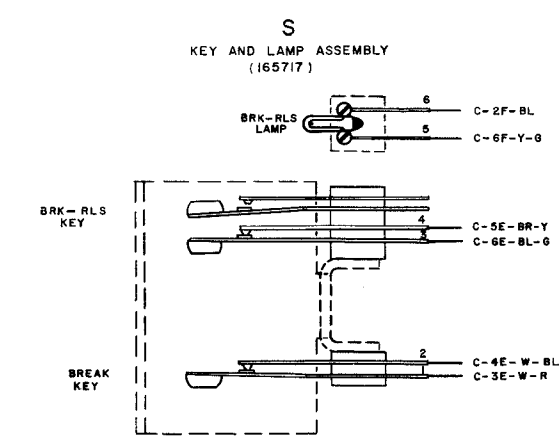
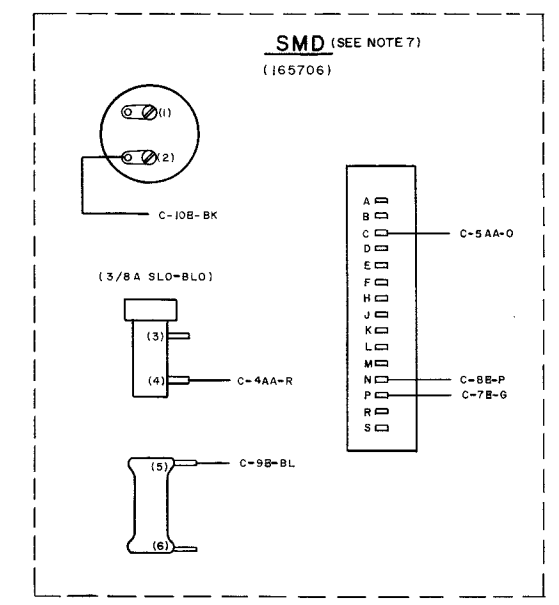
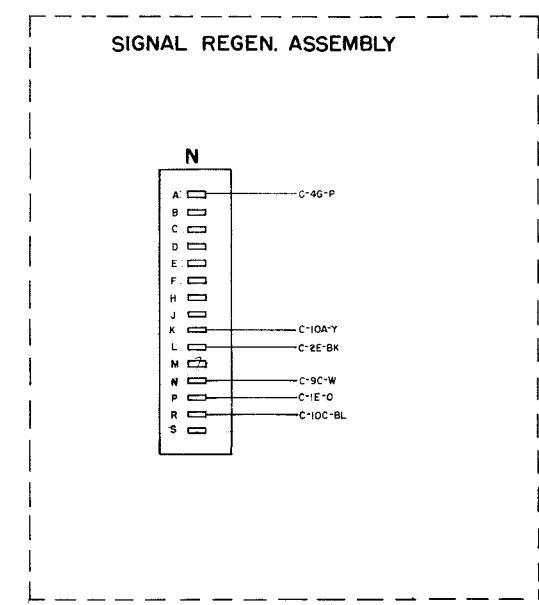
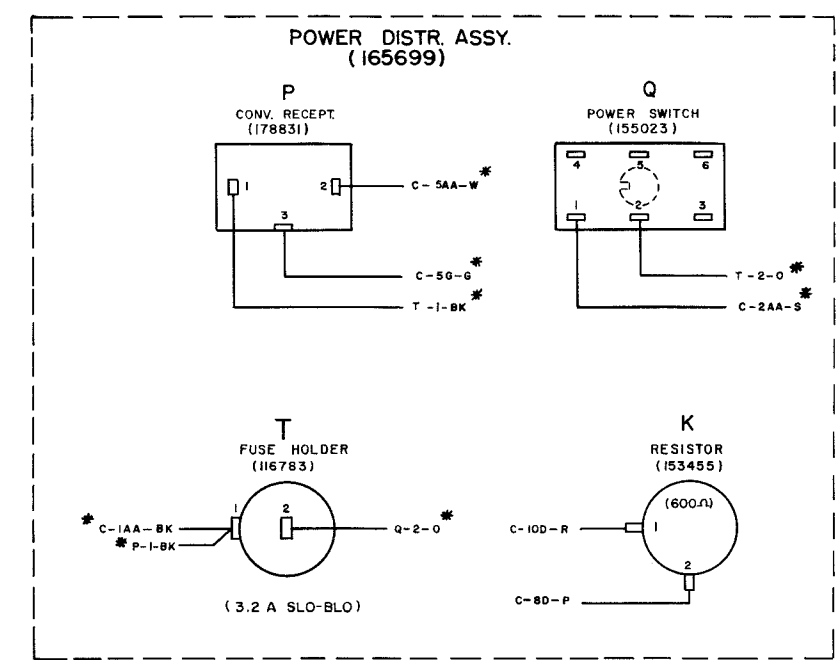


LEADS CONNECTED TO MAIN BOARD

TERMINAL DESIG.	TERMINAL POINT ON BOARD	COLOR
C-9B	R1	O
C-10B	R2	W-BR
C-3C	R4	W-G
C-4C	R5	W-P
C-5C	R6	W-R
C-6C	R7	W-BL
C-1D	R29	W-O
C-2D	R34	BK-G
C-3D	R35	R-BL
C-4D	R8	R-Y
C-5D	R9	BK-R
C-9C	F1	BK
C-4E	F2	BR
C-10C	F3	G
C-4G	F4	W
C-8C	F5	S
C-7C	F6	P
C-5F	F7	R
C-4F	F8	Y
C-5AA	F17	W*
C-3AA	F32	R*
C-4AA	F50	BL*
C-10A	F18	W-S

LEADS CONNECTED TO MAIN BOARD

TERMINAL DESIG.	TERMINAL POINT	COLOR
C-1AA	Q1	S*
C-2AA	H4	R*
C-4AA	L1	BK*
C-4AA	H2	S*
C-5AA	L2	BK*
C-5AA	P2	W*
C-9C	NH	W
C-10C	NR	BL
C-8D	K2	P
C-8D	H1	W
C-9D	H3	W-G
C-10D	K1	R
C-1E	NP	O
C-3E	NL	BK
C-3E	S1	W-R
C-4E	S2	W-BL
C-5E	S4	BR-Y
C-6E	S3	BL-G
C-1F	B3	BK
C-2F	S6	BL
C-4F	B1	W
C-6F	L4	G
C-6F	S5	Y-G
C-6F	B2	W-BK
C-6F	L3	G
C-5D	P3	G*
C-4G	NA	P
C-4AA	SMD-4	R
C-5AA	SMD-C	O
C-7B	SMD-F	G
C-3B	SMD-N	P
C-9B	SMD-S	BL
C-10B	SMD-2	BK
C-10A	NK	Y
C-5G	GND	BK*



ACTUAL WIRING DIAGRAM LESU 305 (KSR)

APPROVALS

D AND B E OF M

E NUMBER

PROD. NO. 4933WD

DATE: 6-5-62

PD FILE NO. 1-58181AA

DRAWN M.K. CHKD. [Signature]

ENGR. W.T.C. APPD. [Signature]

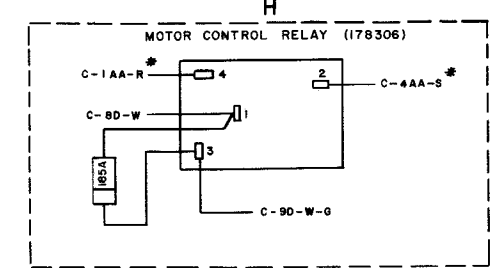
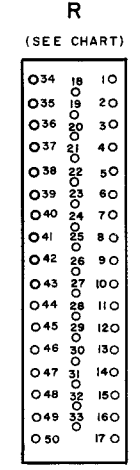
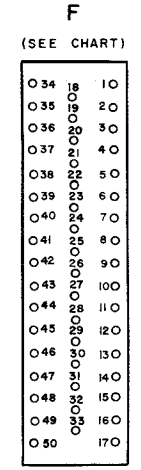
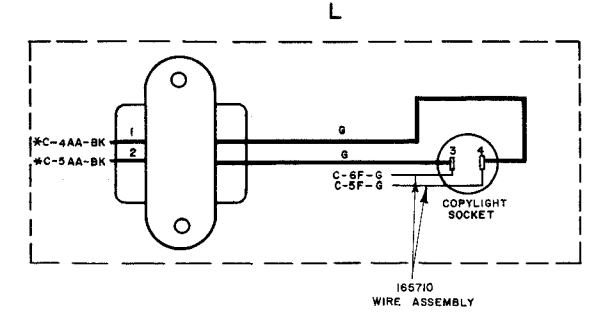
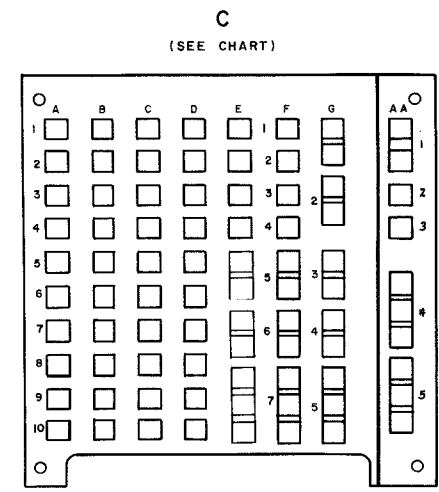
TELETYPE CORPORATION

4933 WD

ISSUE	DATE	AUTH. NO.
A	8-14-62	72218
B	1-30-63	73144
C	2-20-63	73772

- NO. NOTES**
1. **WIRING LEGEND:**
  2. **COLOR CODE:**  

BK - BLACK	BK - G - BLACK - GREEN
R - RED	R - BL - RED - BLUE
O - ORANGE	R - Y - RED - YELLOW
G - GREEN	BK - R - BLACK - RED
BL - BLUE	W - BR - WHITE - BROWN
P - PURPLE	W - O - WHITE - ORANGE
W - WHITE	W - G - WHITE - GREEN
S - SLATE	W - P - WHITE - PURPLE
  3. UNIT WIRED FOR 117 VOLTS, 60 CYCLE, A.C. POWER INPUT ONLY.
  4. PLUGS VIEWED FROM SOLDER TERMINAL ENDS.
  5. FOR SCHEMATIC SEE 4936-B1 & B2WD.
  6. \* ASTERISK DENOTES #18 GA. WIRE.
  7. NO WIRING SHALL BE DONE TO 165729 TERMINAL STRIP IN LAC CABINET APPARATUS RACK BY TELETYPE CORP. WIRING SHALL BE DONE BY EQUIPMENT INSTALLER.
  8. SELECTOR MAGNET DRIVERS ACTUAL WIRING DIAGRAM IS 5926 WD.

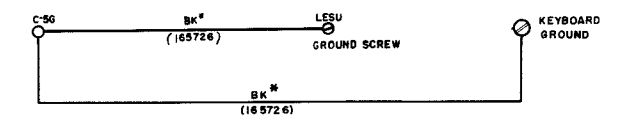
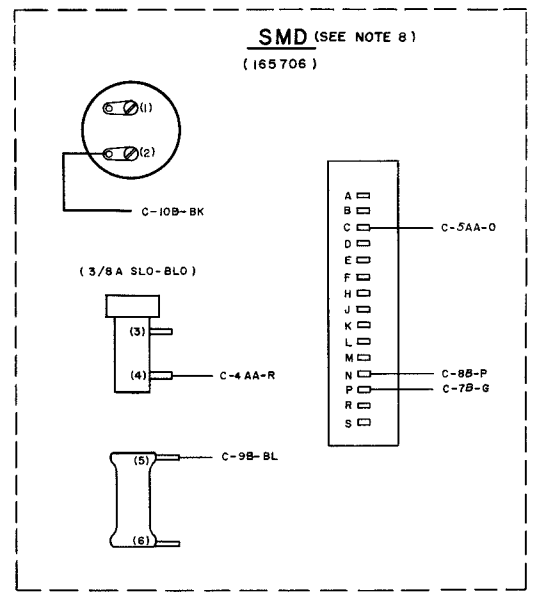
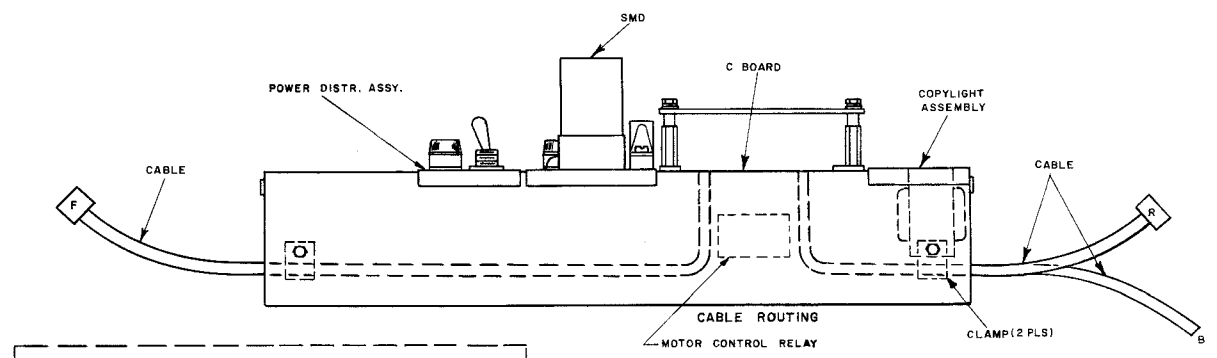
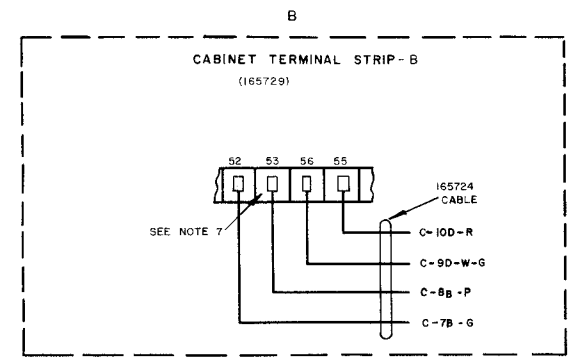
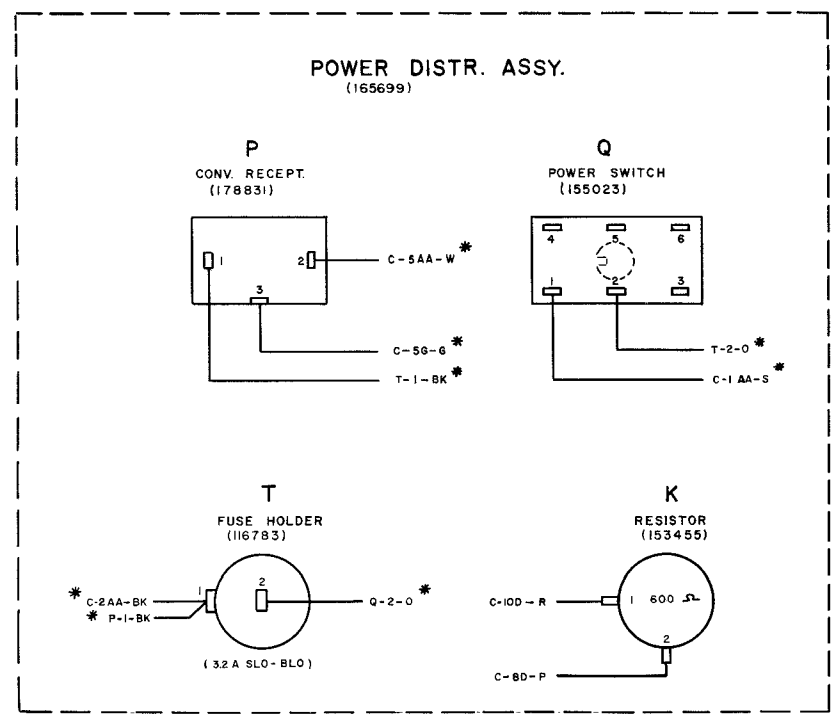


**LEADS CONNECTED TO MAIN BOARD**

TERMINAL DESIG.	TERMINATING POINT ON CONN.	COLOR
C-9B	R1	O
C-10B	R2	W-BR
C-3C	R4	W-G
C-4C	R5	W-P
C-ID	R29	W-O
C-2D	R34	BK-G
C-3D	R35	R-BL
C-4D	R36	R-Y
C-5D	R37	BK-R
C-6C	F5	S
C-7C	F6	P
C-5AA	F17	W*
C-7AA	F32	R*
C-8AA	F50	BL*

**LEADS CONNECTED TO MAIN BOARD**

TERMINAL DESIG.	TERMINATING POINT	COLOR
C-2AA	T1	BK*
C-1AA	Q1	S*
C-1AA	H4	R*
C-4AA	L1	BK*
C-4AA	H2	S*
C-5AA	L2	BK*
C-5AA	P2	W*
C-8D	K2	P
C-8D	H1	W
C-9D	H3	W-G
C-9D	B55	W-O
C-10D	B55	R
C-10D	K1	R
C-7B	B52	G
C-8B	B53	P
C-5F	L4	G
C-6F	L3	G
C-5G	F5	G*
C-4AA	SMD 4	R
C-5AA	SMD C	O
C-7B	SMD P	G
C-8B	SMD N	P
C-9B	SMD 5	BL
C-10B	SMD 2	BK
C-5G	GND	BK*



ACTUAL WIRING DIAGRAM LESU 304 (R0)

APPROVALS  
 D AND B E OF M  
 E NUMBER  
 PROD. NO. 4934 WD  
 DATE: 8-31-62  
 P.D. FILE NO. 1-159-151AA  
 DRAWN M.K. CHKD. [Signature]  
 ENGR. W.T.C. APPR. [Signature]

TELETYPE CORPORATION  
 4934 WD

- NOTES**  
 WIRING LEADS
1. DISTANT TERMINAL ALL BLK  
 DISTANT TERMINAL DESTINATION
2. WIRE COLOR CODE
3. UNIT WIRED FOR 115 VOLTS  
 60 CYCLE POWER INPUT  
 ONLY.
4. RECEPTACLES VIEWED FROM  
 WIRING SIDE.
5. \* APOSTROPH FOLLOWING WIRE  
 COLOR INDICATES 18 GAUGE WIRE.
6. IN EARLY UNITS THIS WIRE COLOR  
 IS BR-G.
7. ASSOCIATED CABLES:  
 193460-MAIN CABLE ASSEMBLY  
 193461-CALL CONTROL CABLE ASSEM.  
 193462-PANEL CABLE ASSEMBLY.
8. CONNECT EITHER LEAD OF BELL  
 TO AA-2 AND THE REMAINING LEAD  
 TO AA-5 AS INDICATED WHEN THE  
 LESU IS INSTALLED.
9. ALL COMPONENT LEADS EXCEPT  
 THE SIGNAL CONTROLLED  
 RECTIFIER ARE COVERED BY  
 60340EM VINYL GLASS TUBING.
10. ASSOCIATED WIRING DRAWING 193564  
 (SIGNAL REGENERATOR CARD)
11. R IS PAGE PRINTER CONNECTOR.  
 F IS KEYBOARD CONNECTOR.  
 A IS ANSWERBACK CONNECTOR.  
 V, W, X, CALL CONTROL CONNECTORS.

**LEADS CONNECTED TO WIRING FIELDS**

TERMINAL DESIG.	TERMINAL POINT ON CONN.	COLOR
C-9A	R1	W-Y
C-8A	R2	BL
C-7G	R3	BL
C-4C	R4	W-O-G
C-7J	R5	W-BK-E
C-3B	R6	O-G
C-7F	R7	O-S
C-8C	R8	P
C-8B	R9	W
C-6B	R10	W-G
C-4H	R11	W
C-2AA	R12	G
C-7A	R17	W-BL
C-7B	R18	BK-S
C-5A	R21	Y
C-10A	R23	W-R
C-6H	R24	W-BR
C-5B	R25	BK
C-6A	R29	BE-Y
C-3A	R34	BE-G
C-10C	R35	R-BL
C-5F	R36	R-Y
C-2A	R37	BK-BR
C-1A	R38	R
C-1B	R39	BL-S
C-4J	R40	Y-G
C-7A	R41	BL-G
C-5G	R44	W-O
C-7U	R45	G-S
C-4AA	R50	S

**SPARES**

C-1G	F2	BK
C-1K	F1	BE
C-2L	F3	W-BR
C-1G	F4	W
C-5G	F5	W-G
C-6K	F6	W-G
C-4G	F7	E
C-1F	F8	Y
C-4AA	F17	O*
C-1AA	F32	E*
C-5AA	F50	G*
C-2K	F18	W-O-G

**LEADS CONNECTED TO WIRING FIELDS**

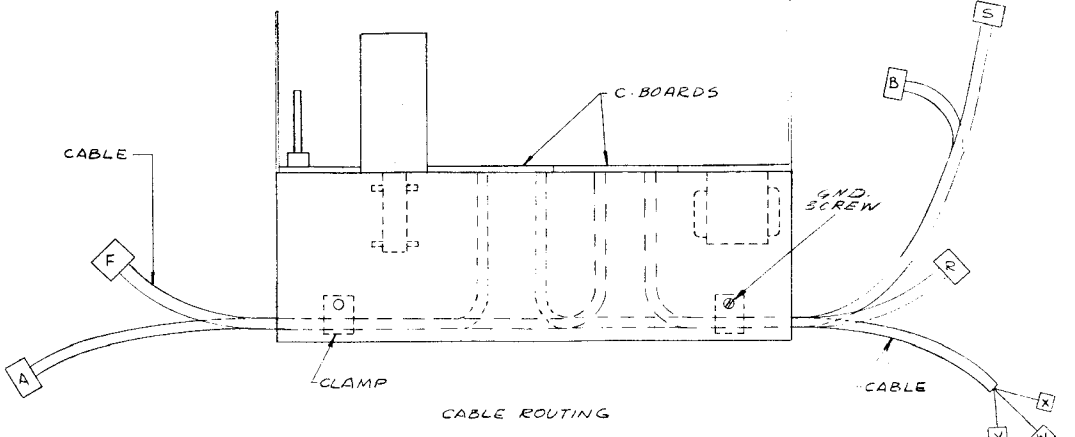
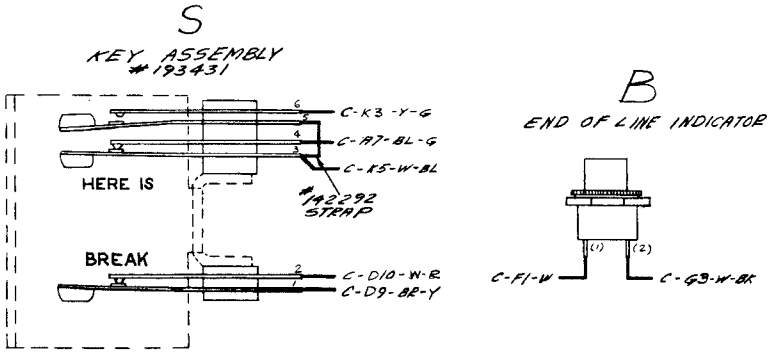
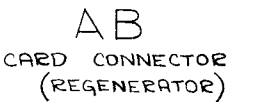
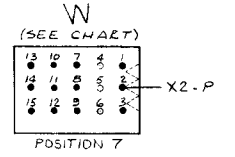
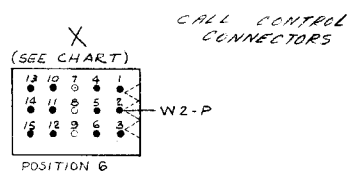
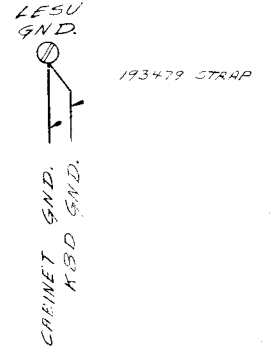
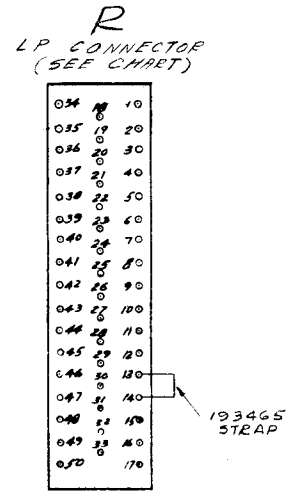
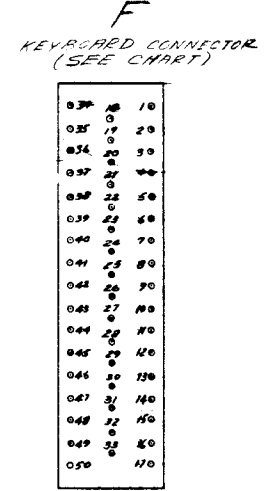
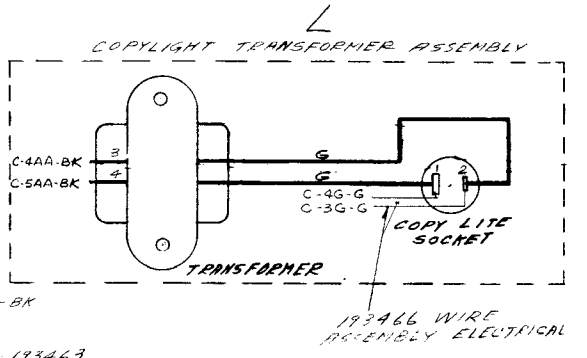
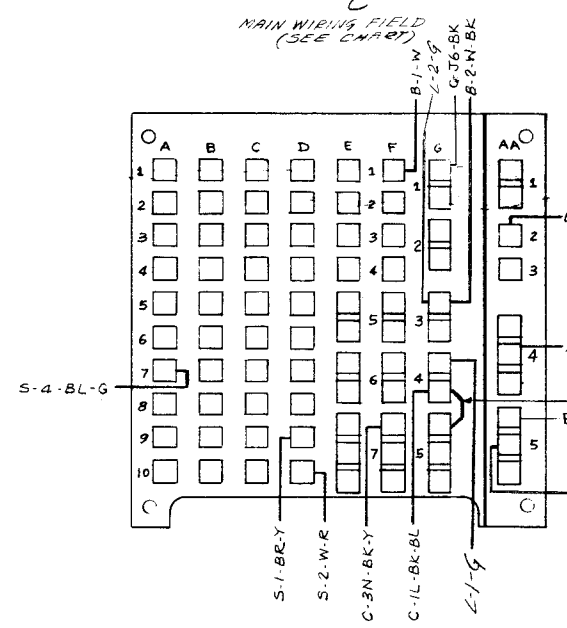
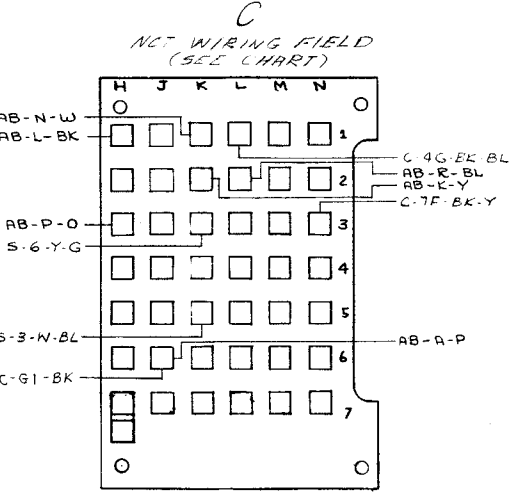
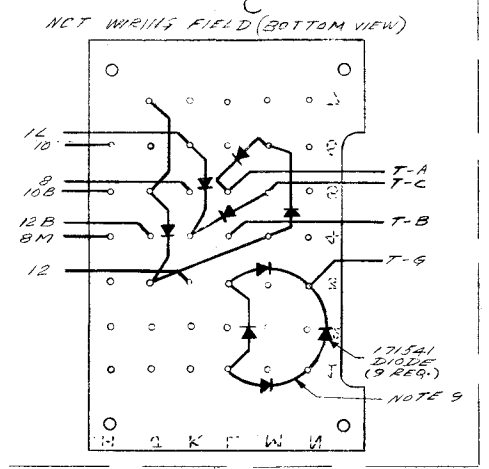
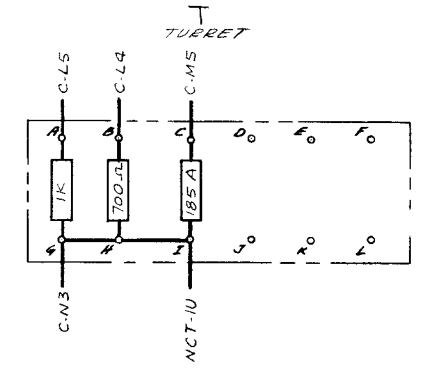
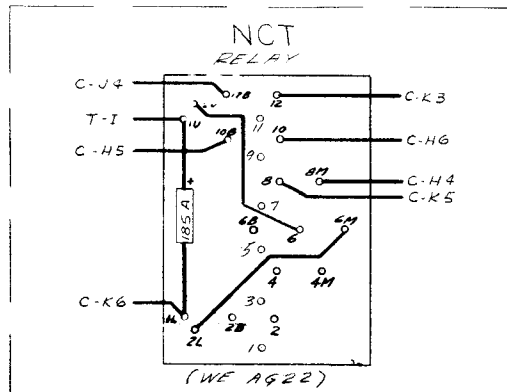
TERMINAL DESIG.	TERMINAL POINT ON CONN.	COLOR
C-2B	X1	BL
C-2A	X3	BE
C-3G	X4	BE
C-5U	X5	O-BE
C-6F	X6	W-Y
C-5B	X7	W-S
C-3N	X8	BL-S
C-5H	X9	W
C-10A	X10	Y-G
C-3A	X11	O-G
C-6A	X12	W-O
C-4C	X13	Y

**LEADS CONNECTED TO WIRING FIELDS**

TERMINAL DESIG.	TERMINAL POINT ON CONN.	COLOR
C-1L	W1	BE-S
C-9A	W3	R-Y
C-8A	W4	R-G
C-6A7	W5	BL-G
C-1AA	W6	R*
C-4AA	W7	O*
C-5AA	W8	G*
C-4L	W9	BR-G
C-5L	W10	BK-BL
C-1N	W11	BK-E
C-3L	W12	N-O-G
C-7B	W13	VV

**NOTE 6**

C-10D	V1	O-S
C-9D	V2	BE-Y
C-1G	V3	O
C-3H	V4	W-BR-E
C-4H	V5	W-G
C-3K	V6	W-O-BL
C-5A	V7	W-BL
C-8B	V8	R-BL
C-10C	V9	N-R
C-1B	V10	G
C-1A	V11	S
C-4F	V12	N-P
C-3B	V13	N-BR
C-8C	V14	BK-O
C-7B	V15	BR-G



**APPROVALS**

DATE	BY	FOR
5-28-62	EOKM	DESIGN
5-28-62	EOKM	CONSTRUCTION

PROD NO 5821WD  
 ACTUAL WIRING DIAGRAM OF LESU 100 ARE MODEL 35 MSR SET

DATE 5-28-62  
 PD FILE NO 74215  
 DWG NO 5821WD  
 IND AT APPROV  
 TELETYPE CORPORATION

5821WD

**NOTES**  
**WIRING LEGEND**  
 DISTANT TERMINATING AREA  
 DISTANT TERMINAL DESIGNATION  
 WIRE COLOR CODE

**COLOR CODE**  
 W - WHITE  
 BK - BLACK  
 BL - BLUE  
 BR - BROWN  
 BU - BUFF  
 G - GREEN  
 GR - GRAY  
 L - LEAD  
 N - NAVY  
 O - ORANGE  
 P - PURPLE  
 R - RED  
 RB - RED-BROWN  
 S - SLATE  
 Y - YELLOW

**UNIT WIRED FOR 115 VOLTS  
 60 CYCLES POWER INPUT ONLY.**

**RECEPTACLES VIEWED FROM  
 WIRING SIDE.**

**RESISTORS FOLLOWING WIRE  
 COLOR INDICATORS TO BE WIRE**

**ASSOCIATED CABLES:  
 13340B MAIN CABLE ASSEMBLY  
 13340B CABLE CONTROL CABLE ASSEMBLY  
 13340B MOBILE SWITCHING CABLE ASSEMBLY**

**RECONNECT EITHER LEAD OF BELL  
 TO A-2 AND THE REMAINING LEAD  
 TO A-5 AS INDICATED WHEN THE  
 LEAD IS INSTALLED.**

**ALL COMPONENT LEADS EXCEPT THE  
 WILSON CONTROLLED RECEPTACLE  
 ARE COVERED BY 63503M UNIL  
 63503 TUBING.**

**ASSOCIATED WIRING DIAGRAMS  
 5883 WD (SMD ACTUAL)  
 193440 (SMD CIRCUIT BOARD)  
 1927 WD (TRANSMITTER ACTUAL)**

**LEADS CONNECTED TO WIRING FIELD**

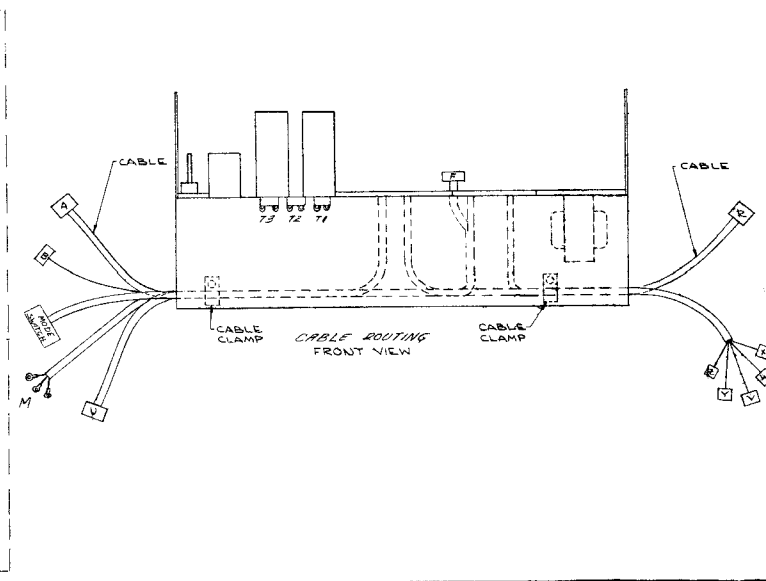
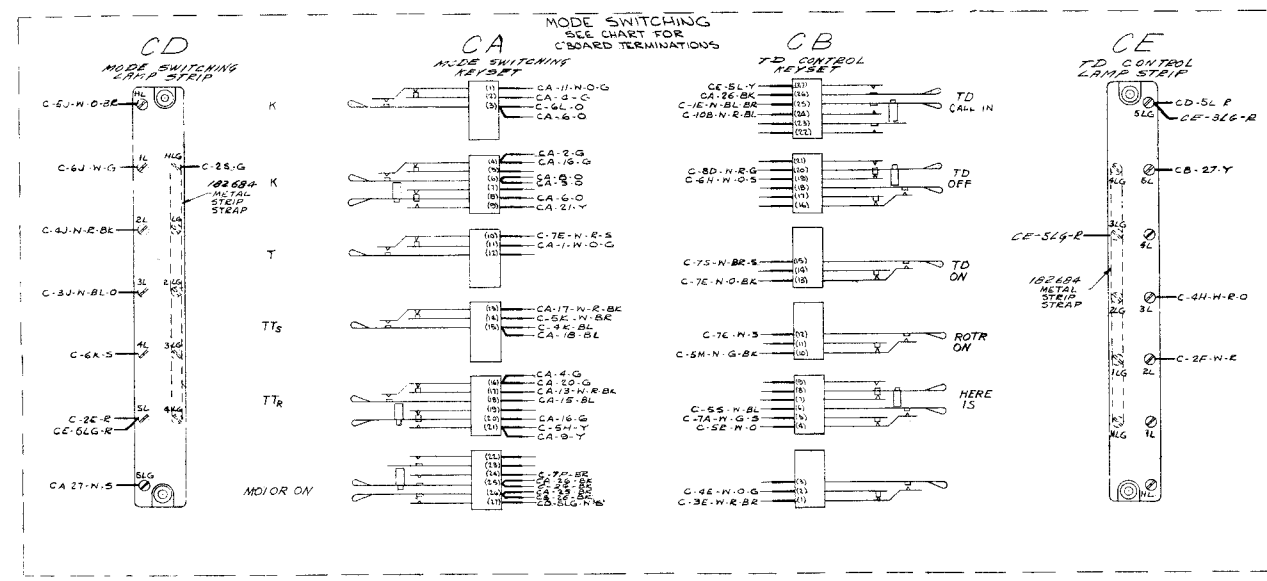
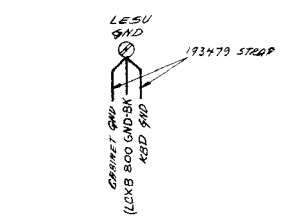
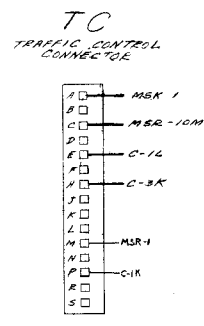
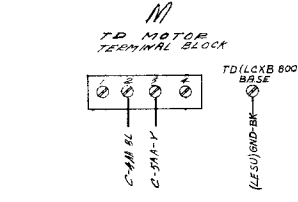
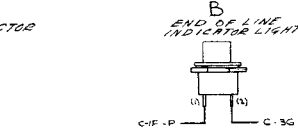
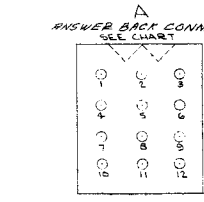
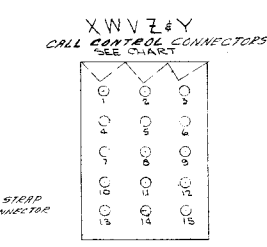
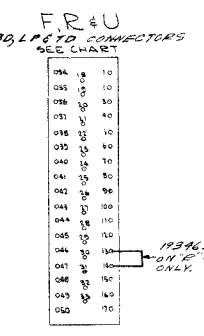
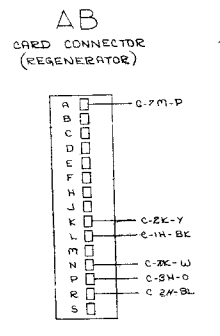
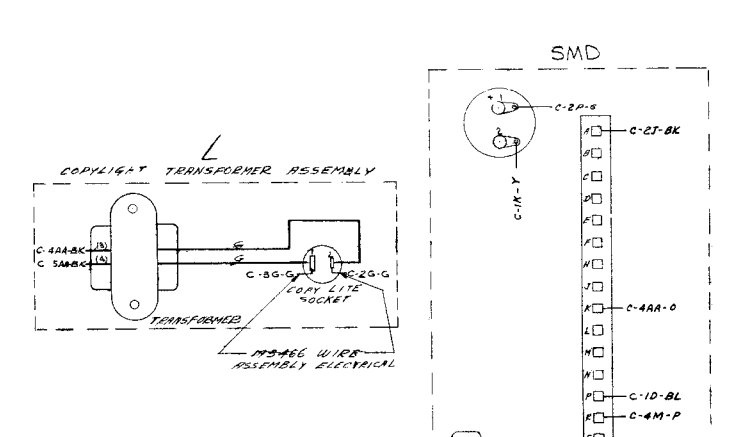
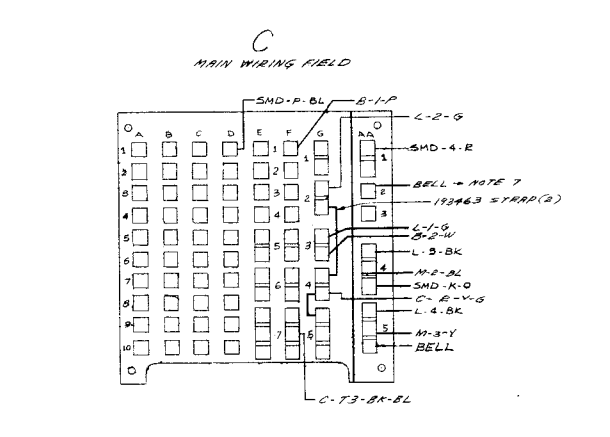
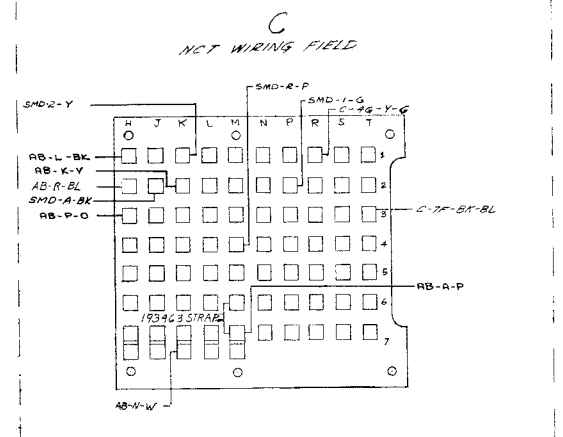
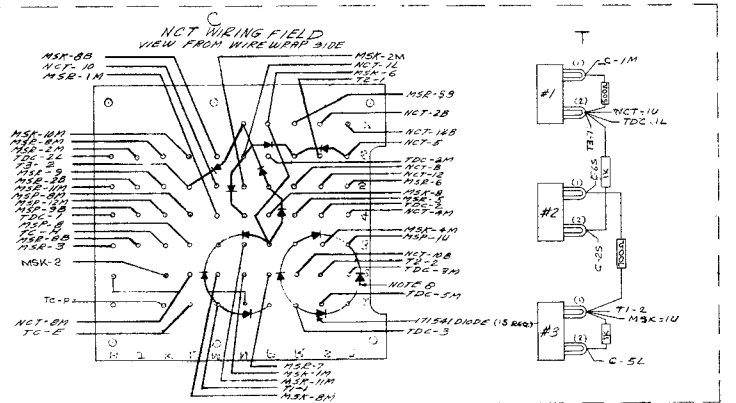
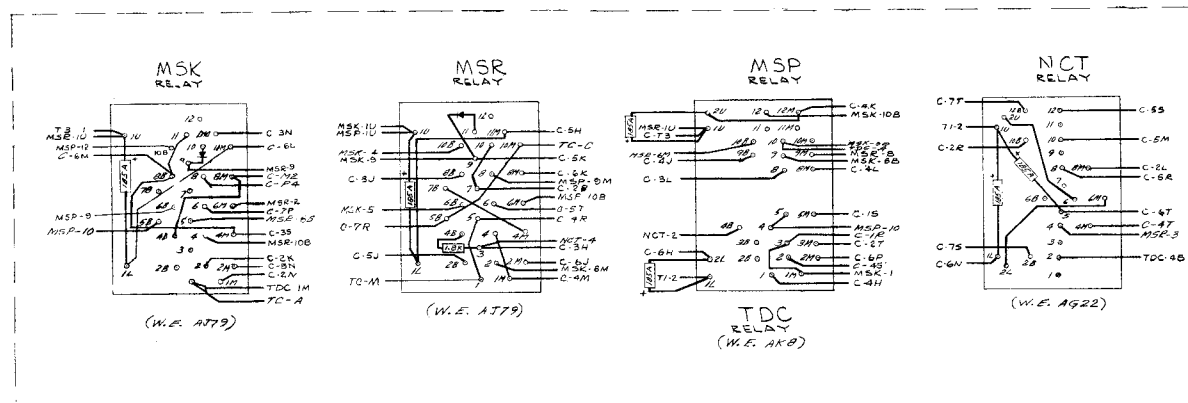
TERMINAL DESIGNATION	WIRE COLOR
C-25	W-BK
C-26	W-BK
C-27	W-BK
C-28	W-BK
C-29	W-BK
C-30	W-BK
C-31	W-BK
C-32	W-BK
C-33	W-BK
C-34	W-BK
C-35	W-BK
C-36	W-BK
C-37	W-BK
C-38	W-BK
C-39	W-BK
C-40	W-BK
C-41	W-BK
C-42	W-BK
C-43	W-BK
C-44	W-BK
C-45	W-BK
C-46	W-BK
C-47	W-BK
C-48	W-BK
C-49	W-BK
C-50	W-BK
C-51	W-BK
C-52	W-BK
C-53	W-BK
C-54	W-BK
C-55	W-BK
C-56	W-BK
C-57	W-BK
C-58	W-BK
C-59	W-BK
C-60	W-BK
C-61	W-BK
C-62	W-BK
C-63	W-BK
C-64	W-BK
C-65	W-BK
C-66	W-BK
C-67	W-BK
C-68	W-BK
C-69	W-BK
C-70	W-BK
C-71	W-BK
C-72	W-BK
C-73	W-BK
C-74	W-BK
C-75	W-BK
C-76	W-BK
C-77	W-BK
C-78	W-BK
C-79	W-BK
C-80	W-BK
C-81	W-BK
C-82	W-BK
C-83	W-BK
C-84	W-BK
C-85	W-BK
C-86	W-BK
C-87	W-BK
C-88	W-BK
C-89	W-BK
C-90	W-BK
C-91	W-BK
C-92	W-BK
C-93	W-BK
C-94	W-BK
C-95	W-BK
C-96	W-BK
C-97	W-BK
C-98	W-BK
C-99	W-BK
C-100	W-BK

**LEADS CONNECTED TO WIRING FIELD**

TERMINAL DESIGNATION	WIRE COLOR
C-1	W-BK
C-2	W-BK
C-3	W-BK
C-4	W-BK
C-5	W-BK
C-6	W-BK
C-7	W-BK
C-8	W-BK
C-9	W-BK
C-10	W-BK
C-11	W-BK
C-12	W-BK
C-13	W-BK
C-14	W-BK
C-15	W-BK
C-16	W-BK
C-17	W-BK
C-18	W-BK
C-19	W-BK
C-20	W-BK
C-21	W-BK
C-22	W-BK
C-23	W-BK
C-24	W-BK
C-25	W-BK
C-26	W-BK
C-27	W-BK
C-28	W-BK
C-29	W-BK
C-30	W-BK
C-31	W-BK
C-32	W-BK
C-33	W-BK
C-34	W-BK
C-35	W-BK
C-36	W-BK
C-37	W-BK
C-38	W-BK
C-39	W-BK
C-40	W-BK
C-41	W-BK
C-42	W-BK
C-43	W-BK
C-44	W-BK
C-45	W-BK
C-46	W-BK
C-47	W-BK
C-48	W-BK
C-49	W-BK
C-50	W-BK
C-51	W-BK
C-52	W-BK
C-53	W-BK
C-54	W-BK
C-55	W-BK
C-56	W-BK
C-57	W-BK
C-58	W-BK
C-59	W-BK
C-60	W-BK
C-61	W-BK
C-62	W-BK
C-63	W-BK
C-64	W-BK
C-65	W-BK
C-66	W-BK
C-67	W-BK
C-68	W-BK
C-69	W-BK
C-70	W-BK
C-71	W-BK
C-72	W-BK
C-73	W-BK
C-74	W-BK
C-75	W-BK
C-76	W-BK
C-77	W-BK
C-78	W-BK
C-79	W-BK
C-80	W-BK
C-81	W-BK
C-82	W-BK
C-83	W-BK
C-84	W-BK
C-85	W-BK
C-86	W-BK
C-87	W-BK
C-88	W-BK
C-89	W-BK
C-90	W-BK
C-91	W-BK
C-92	W-BK
C-93	W-BK
C-94	W-BK
C-95	W-BK
C-96	W-BK
C-97	W-BK
C-98	W-BK
C-99	W-BK
C-100	W-BK

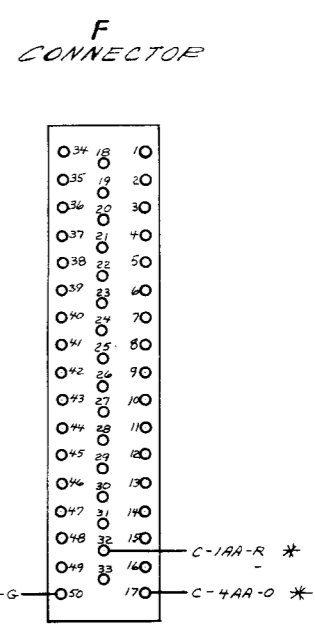
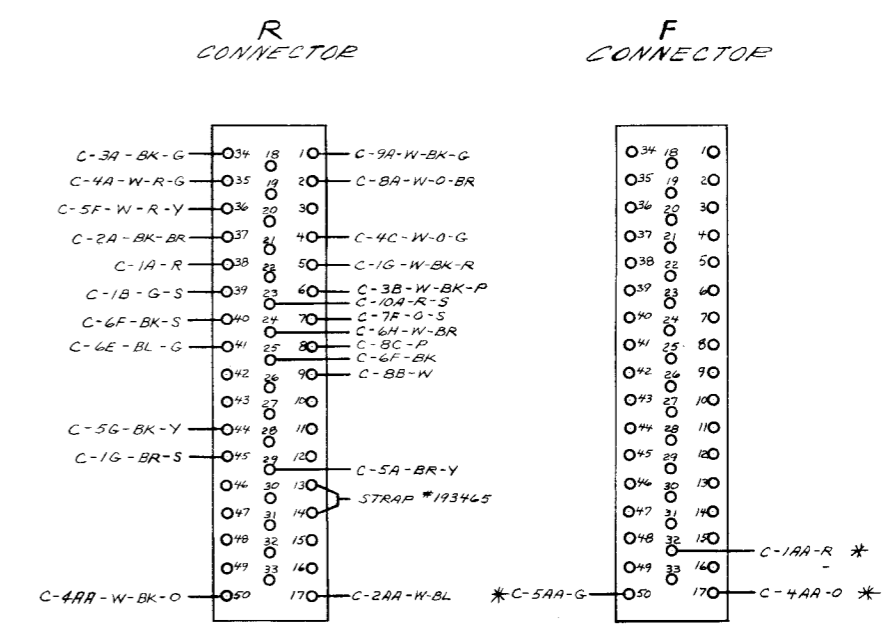
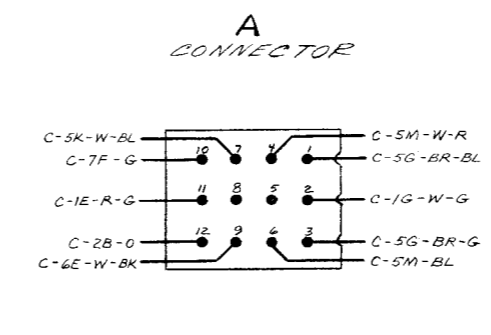
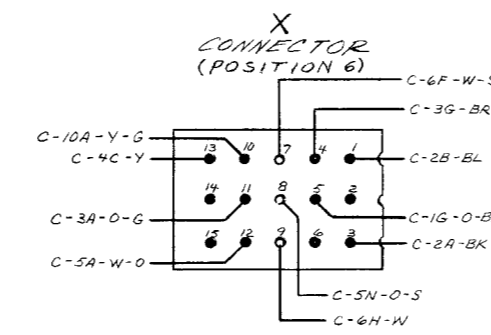
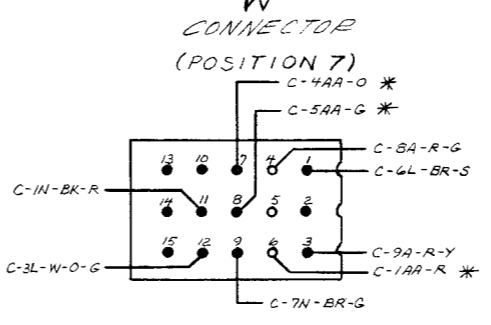
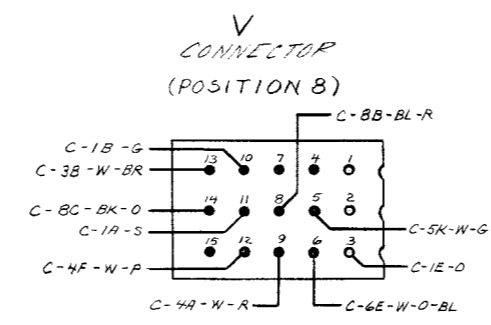
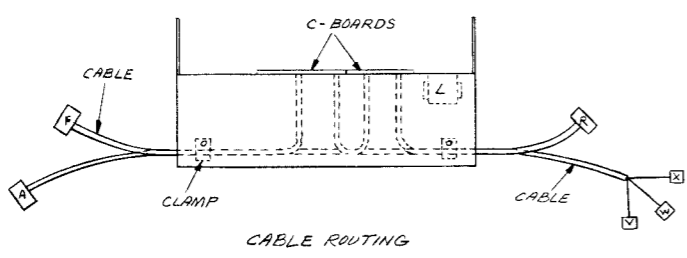
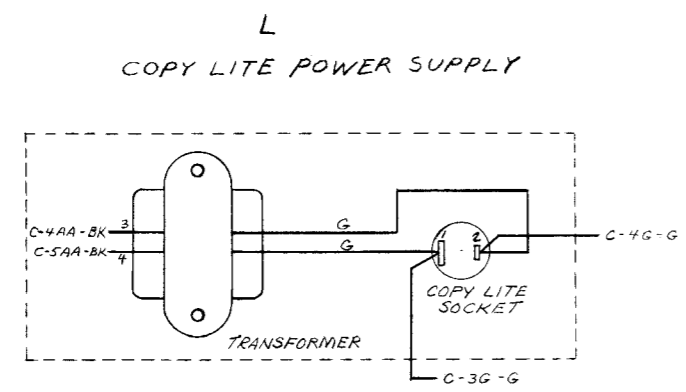
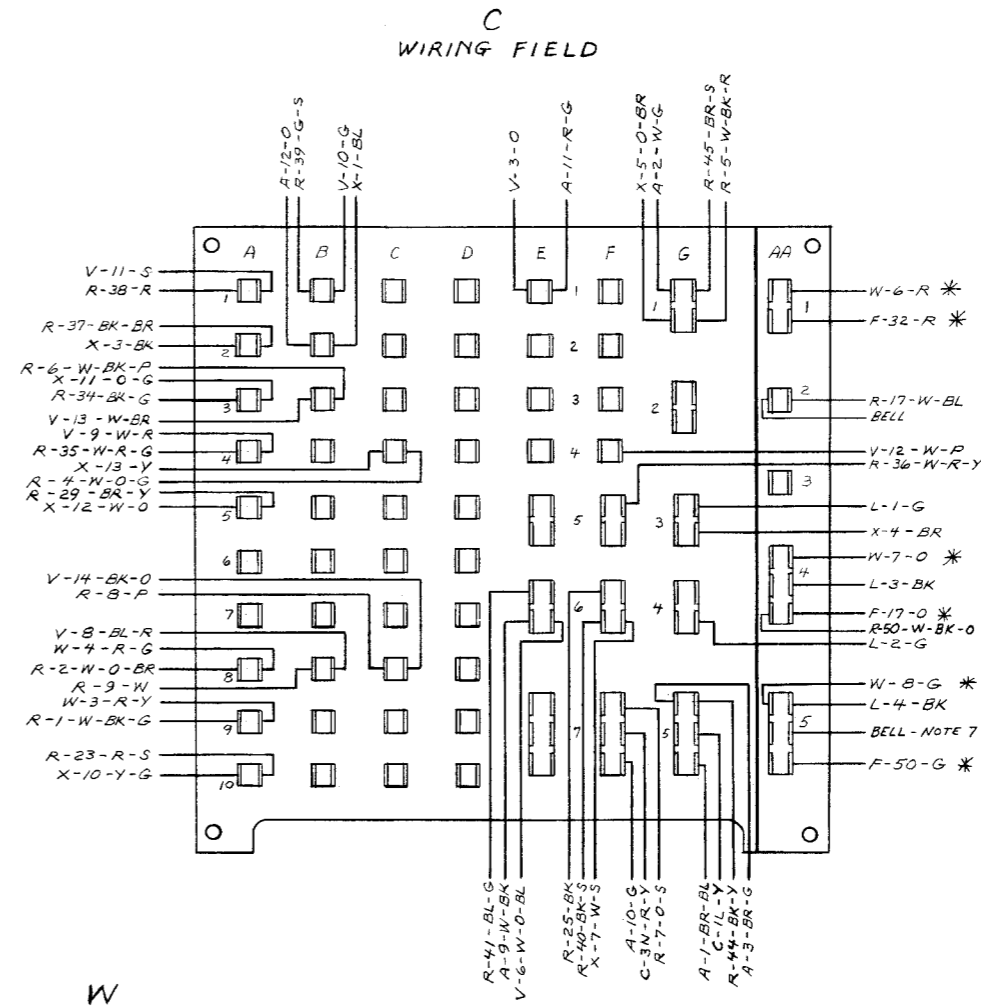
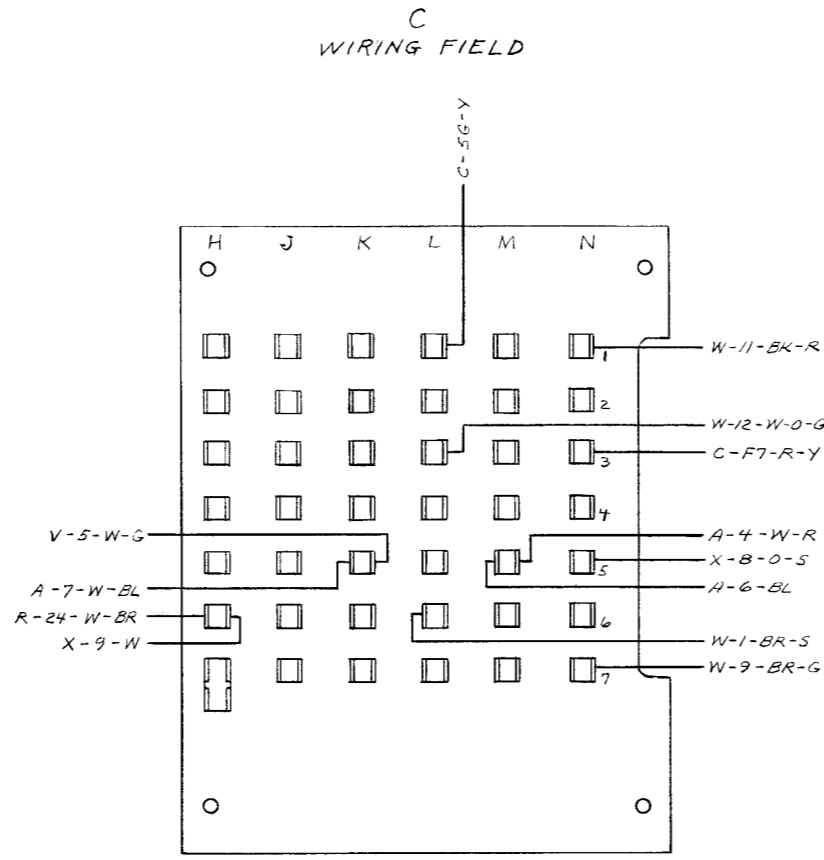
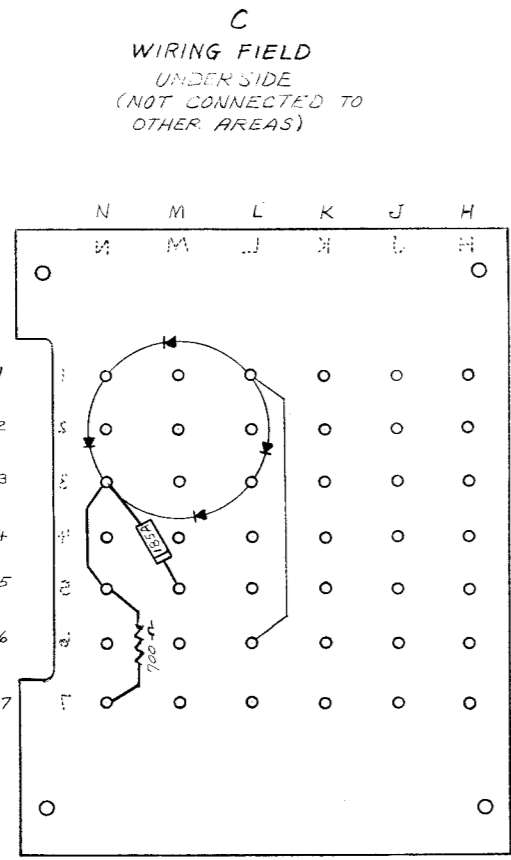
**X CONNECTOR**

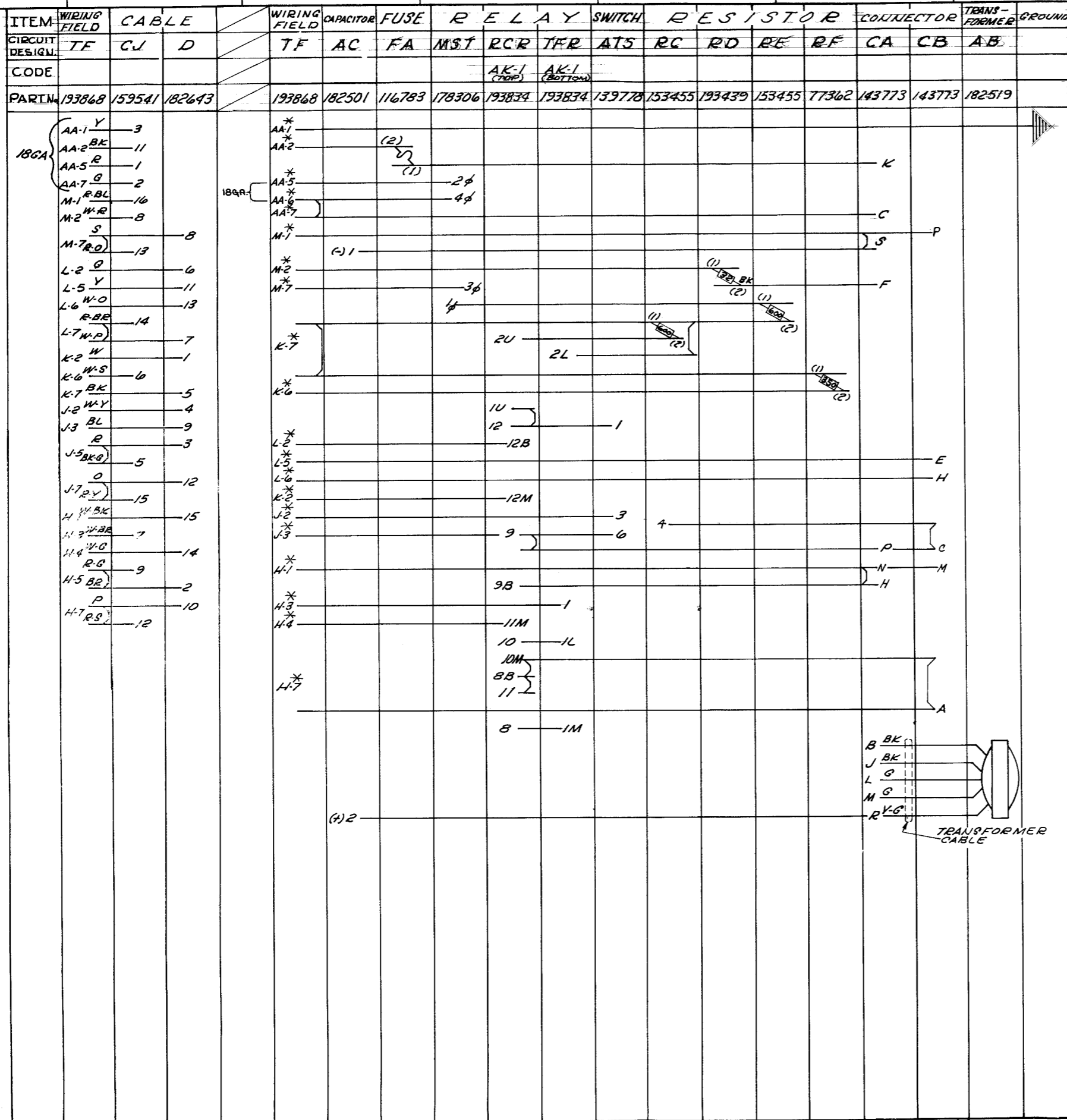
TERMINAL DESIGNATION	WIRE COLOR
X-1	W-BK
X-2	W-BK
X-3	W-BK
X-4	W-BK
X-5	W-BK
X-6	W-BK
X-7	W-BK
X-8	W-BK
X-9	W-BK
X-10	W-BK
X-11	W-BK
X-12	W-BK
X-13	W-BK
X-14	W-BK
X-15	W-BK
X-16	W-BK
X-17	W-BK
X-18	W-BK
X-19	W-BK
X-20	W-BK
X-21	W-BK
X-22	W-BK
X-23	W-BK
X-24	W-BK
X-25	W-BK
X-26	W-BK
X-27	W-BK
X-28	W-BK
X-29	W-BK
X-30	W-BK
X-31	W-BK
X-32	W-BK
X-33	W-BK
X-34	W-BK
X-35	W-BK
X-36	W-BK
X-37	W-BK
X-38	W-BK
X-39	W-BK
X-40	W-BK
X-41	W-BK
X-42	W-BK
X-43	W-BK
X-44	W-BK
X-45	W-BK
X-46	W-BK
X-47	W-BK
X-48	W-BK
X-49	W-BK
X-50	W-BK



5822 WD  
 1-21-53 73586

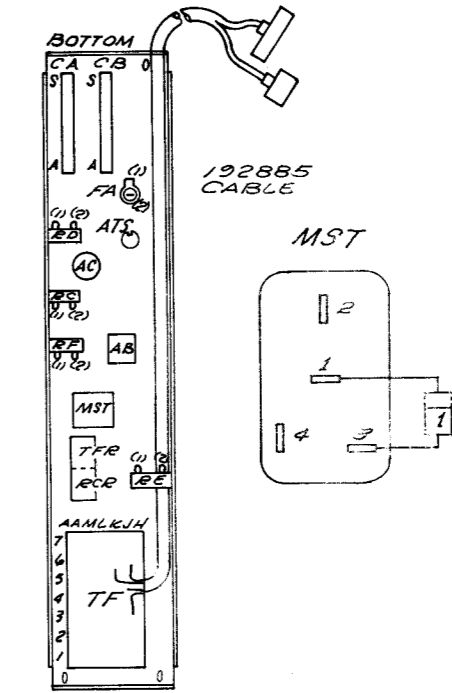
- NOTES
1. WIRING LEGEND:  
 DISTANT TERMINATING AREA  
 DISTANT TERMINAL DESIGNATION  
 WIRE COLOR CODE
- COLOR CODE
- |                             |                    |
|-----------------------------|--------------------|
| W - WHITE                   | W-BK - WHITE-BLACK |
| OR - ORANGE                 | W-O - WHITE-ORANGE |
| BL - BLUE                   | W-BL - WHITE-BLUE  |
| Y - YELLOW                  | W-Y - WHITE-YELLOW |
| P - PURPLE                  | W-P - WHITE-PURPLE |
| G - GREEN                   | W-G - WHITE-GREEN  |
| R - RED                     | W-R - WHITE-RED    |
| S - SLATE                   | W-S - WHITE-SLATE  |
| BR - BROWN                  | W-BR - WHITE-BROWN |
| Y-G - YELLOW-GREEN          |                    |
| BK-Y - BLACK-YELLOW         |                    |
| BL-BL - BLUE-BLUE           |                    |
| R-Y - RED-YELLOW            |                    |
| BR-BL - BROWN-BLUE          |                    |
| BR-G - BROWN-GREEN          |                    |
| BR-Y - BROWN-YELLOW         |                    |
| BK-BL - BLACK-BLUE          |                    |
| BK-G - BLACK-GREEN          |                    |
| BK-R - BLACK-RED            |                    |
| R-O - RED-ORANGE            |                    |
| R-S - RED-SLATE             |                    |
| R-BR - RED-BROWN            |                    |
| O-G - ORANGE-GREEN          |                    |
| O-S - ORANGE-SLATE          |                    |
| O-BR - ORANGE-BROWN         |                    |
| BK-S - BLACK-SLATE          |                    |
| BR-BR - BROWN-BROWN         |                    |
| BL-S - BLUE-SLATE           |                    |
| BL-G - BLUE-GREEN           |                    |
| G-S - GREEN-SLATE           |                    |
| BR-S - BROWN-SLATE          |                    |
| W-BK-R - WHITE-BLACK-RED    |                    |
| W-O-G - WHITE-ORANGE-GREEN  |                    |
| W-O-BL - WHITE-ORANGE-BLUE  |                    |
| W-BR-O - WHITE-BROWN-ORANGE |                    |
| W-BR-P - WHITE-BROWN-PURPLE |                    |
| W-BR-G - WHITE-BROWN-GREEN  |                    |
| W-R-G - WHITE-RED-GREEN     |                    |
| W-P-Y - WHITE-PURPLE-YELLOW |                    |
| W-O-BR - WHITE-ORANGE-BROWN |                    |
| BR-O - BLACK-ORANGE         |                    |
2. \* REFERS TO 18 GA. WIRES  
 ALL OTHER WIRING IS 24 GA.
3. RECEPTACLES VIEWED FROM WIRING SIDE.
4. ASSOCIATED CABLES:  
 193474 CABLE ASSEMBLY (MAIN)  
 193475 CABLE ASSEMBLY.
5. ALL COMPONENT LEADS COVERED WITH 60390 RM VINYL GLASS TUBING
6. CONNECT EITHER LEAD OF BELL TO C-4A2 AND THE REMAINING LEAD TO C-4A5





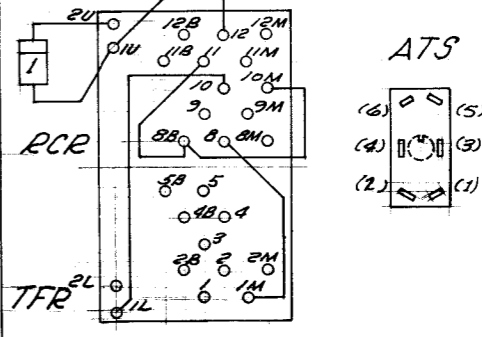
NOTES:  
CONNECT TF-AA-6 & TF-AA-7 BY WIRE WRAPING THE EXTENSIONS OF THESE TERMINALS ON THE UNDER SIDE OF THE TERMINAL BOARD.  
\* - 192007-TERMINAL φ-72577 RM TERMINAL  
ALL WIRE IS 24 GA. EXCEPT WHERE INDICATED.

<b>5864 WD</b>		
ISSUE	DATE	AUTH. NO.
A	9-26-62	74656
B	11-5-62	74656-1



TOP AS VIEWED MOUNTED IN UNIT.

NOTE: AS VIEWED FROM REAR (OR BOTTOM SIDE)



SURFACE WIRING FOR LESU 306 (MADS) (ROTR)

APPROVALS	
D AND R	E OF M
E-NUMBER	
PROD. NO. 5864 WD	
DATE: 6-28-62	
P.D. FILE NO.	
DRAWN G.L.Z.	CHKD.
ENGD J.A.C.	APPD.

TELETYPE CORPORATION  
**5864 WD**