

28 RECEIVING-ONLY REPERFORATOR OR TAPE PRINTER COVER (LRC),
28 SEND-RECEIVE REPERFORATOR OR TAPE PRINTER COVER (LSRC) and
28 REPERFORATOR OR TAPE PRINTER TABLE (LT)

PARTS

FIGURE	CONTENTS	PAGE	FIGURE	CONTENTS	PAGE
1	Non-Typing Reperforator Cover	2	9	Table (w/Full Door)	10
2	Receiving-Only Non-Typing Reperforator Cover (Miniaturized)	3	10	Table (w/Full Door - Continued)	11
3	Receiving-Only Typing Reperforator Cover (Miniaturized)	4	11	Table with Fixed Lower Shift	12
4	Tape Printer Cover	5	12	Table with Sliding Lower Shift	13
5	Receiving-Only Typing Reperforator Cover	6	13	Table with Facilities for Tape Winder	14
6	Send-Receive Cover	7	14	176615** Modification Kit to Adapt Base and Table for Use with Fully Perforated Punches	15
7	Tape Printer Sub-Base	8	15	193684** Chad Disposal, Set of Parts Numerical Index	16
8	Tape Printer Sub-Base	9			17

PAINT FINISH COLOR CODE CHART				
COLOR	Finish Suffixes			
	Wrinkle Finish	Smooth Finish	Textured Vinyl	Smooth Vinyl
Black	AA(37)	BA(34)		
Black, High Gloss	AD(38)			
Brown, Dark	AC(39)	GA(45)	HB(68)	HF(46)
Brown, Light	AB(40)			
Gray, Green	AB(40)			
Gray, Light	AB(40)			
Gray, Olive		GA(45)		
Green, Gray				

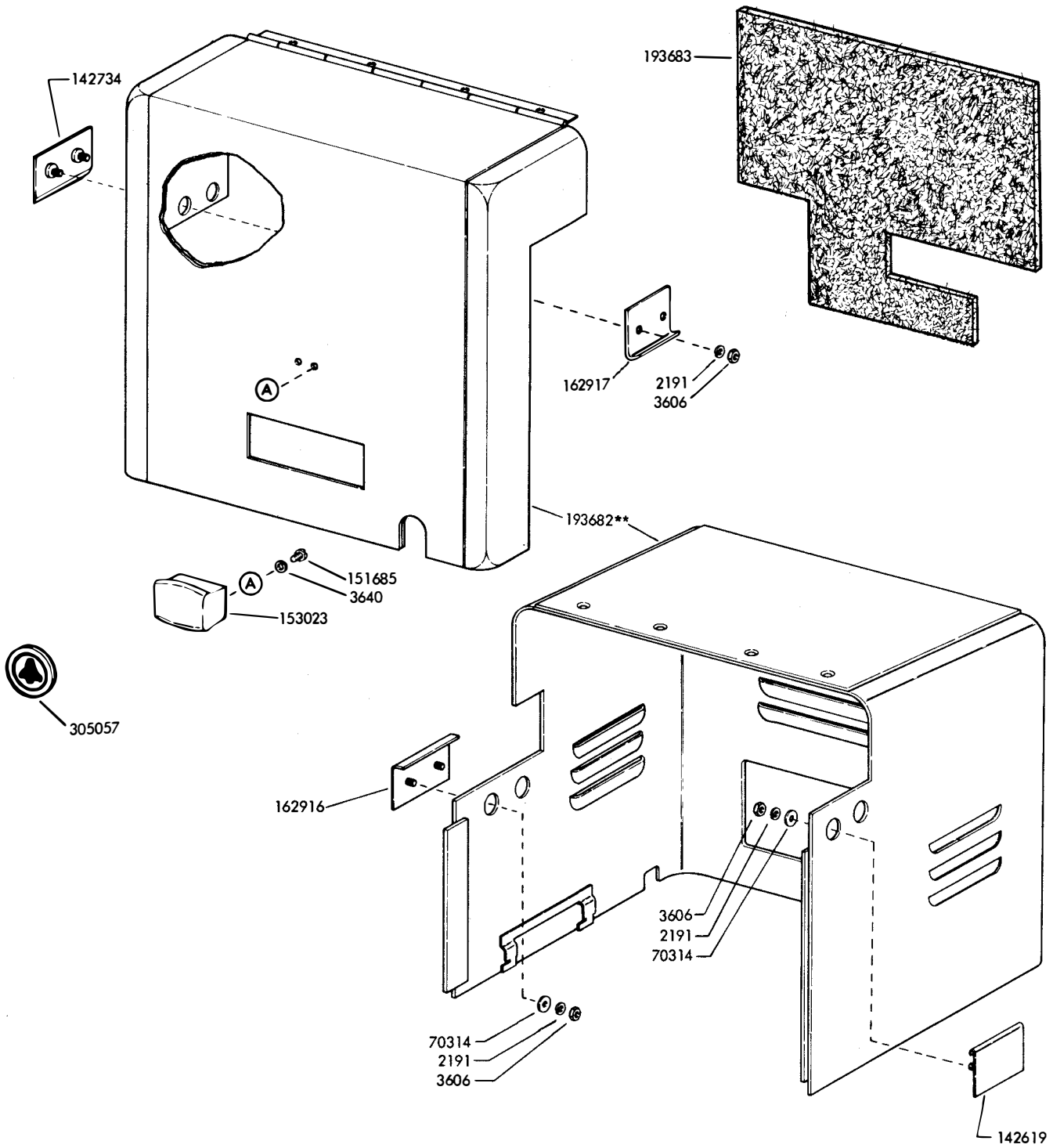
The double asterisk (**) denotes a painted part.
Suffix to be applied following the part number.
Number in parentheses indicates Bell System Code.

The part identification information contained in the following
change notices have been incorporated in this issue.

TCN's #1042, #1139, #1149

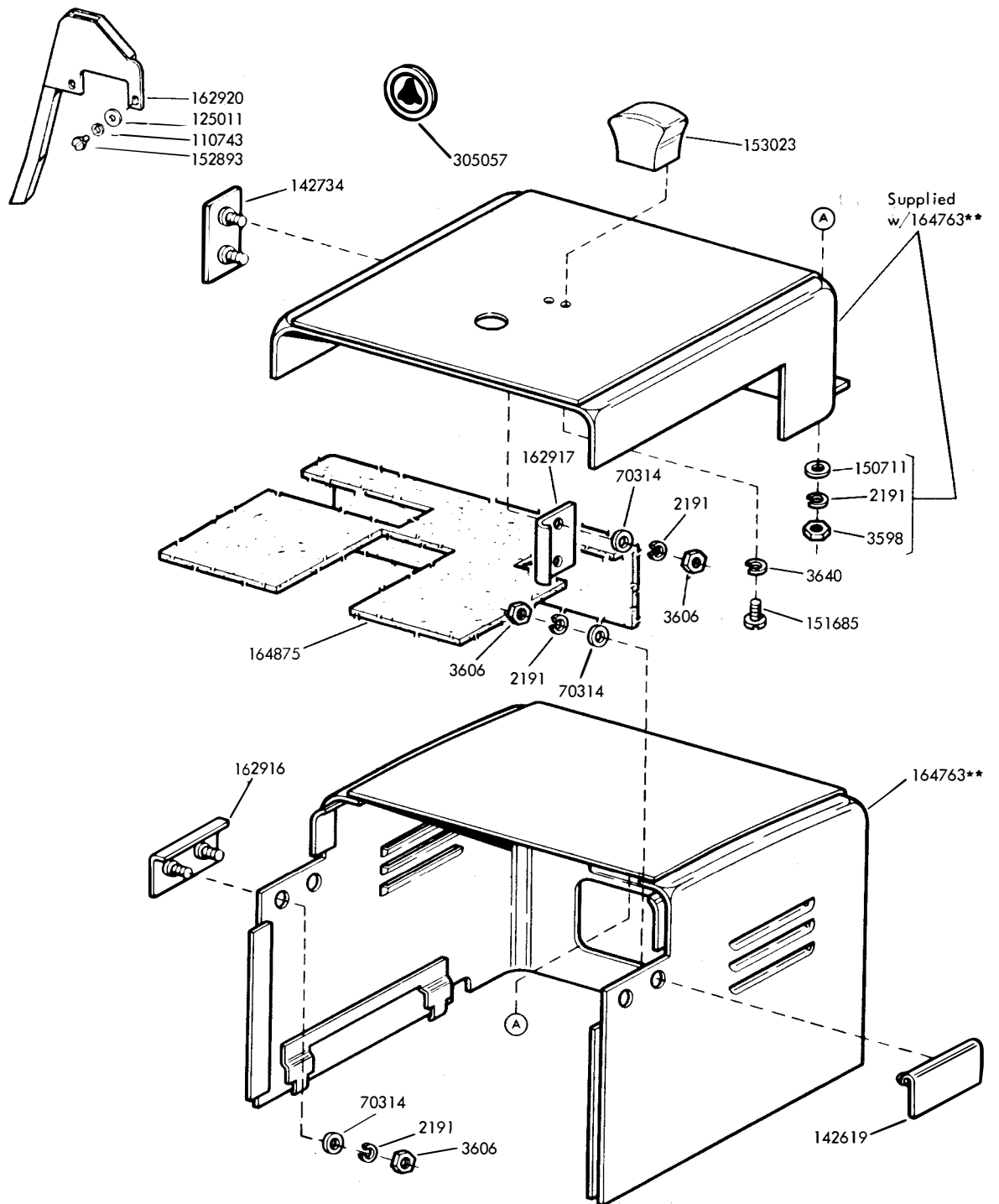
NOTE:
When ordering parts from this section
prefix each number with the letters TP

Designation Conversion Chart	
TELETYPE CODE	BELL SYSTEM CODE
LRC200**	28A**
LSRC200**	28B**
LSRC201**	28LA**
LSRC202**	28LB**



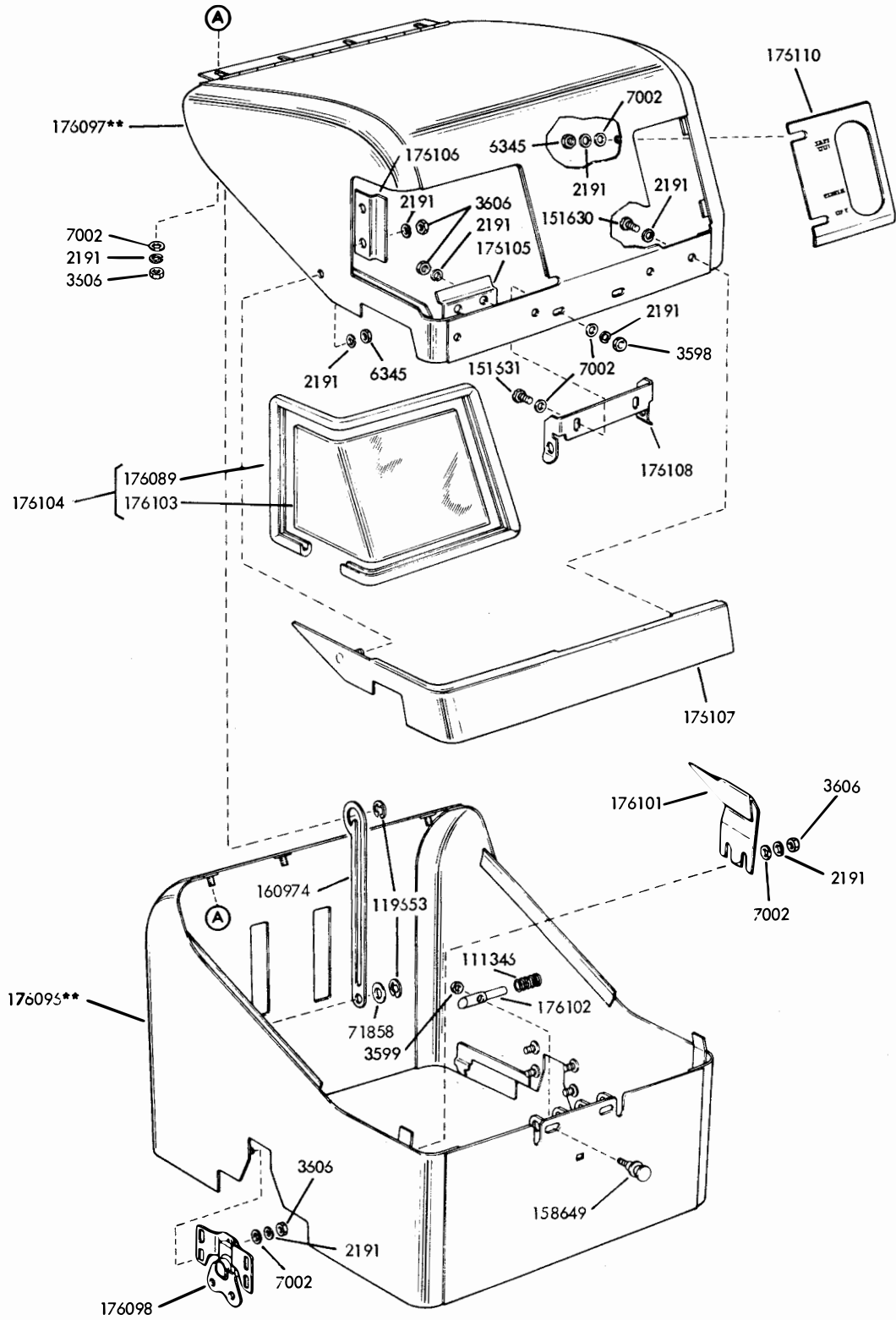
** Refer to page 1 for finish suffix

FIGURE 1. NON-TYPING REPERFORATOR COVER



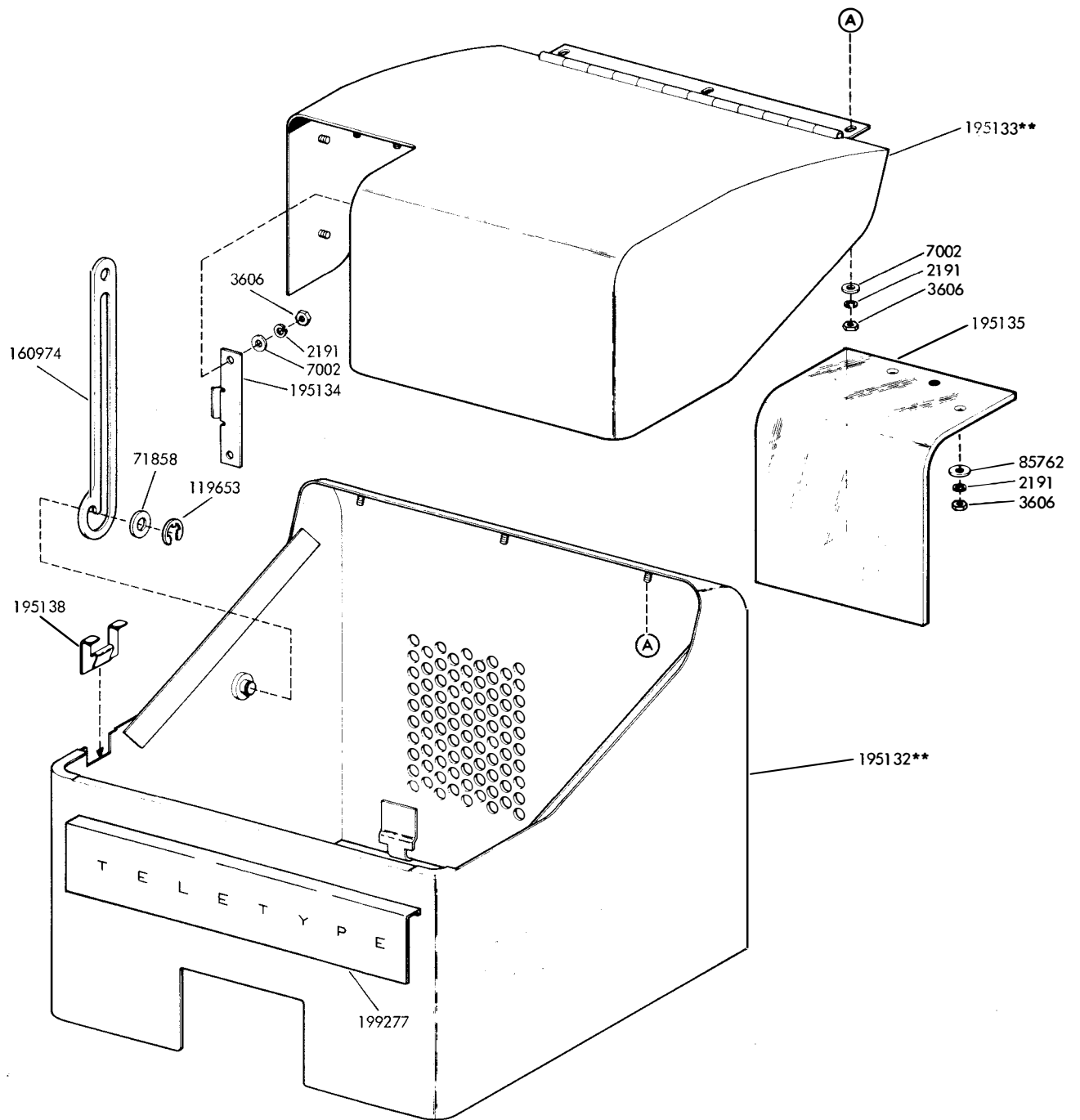
**Refer to page 1 for finish suffix

FIGURE 2. RECEIVING-ONLY NON-TYPING REPERFORATOR COVER (Miniaturized)



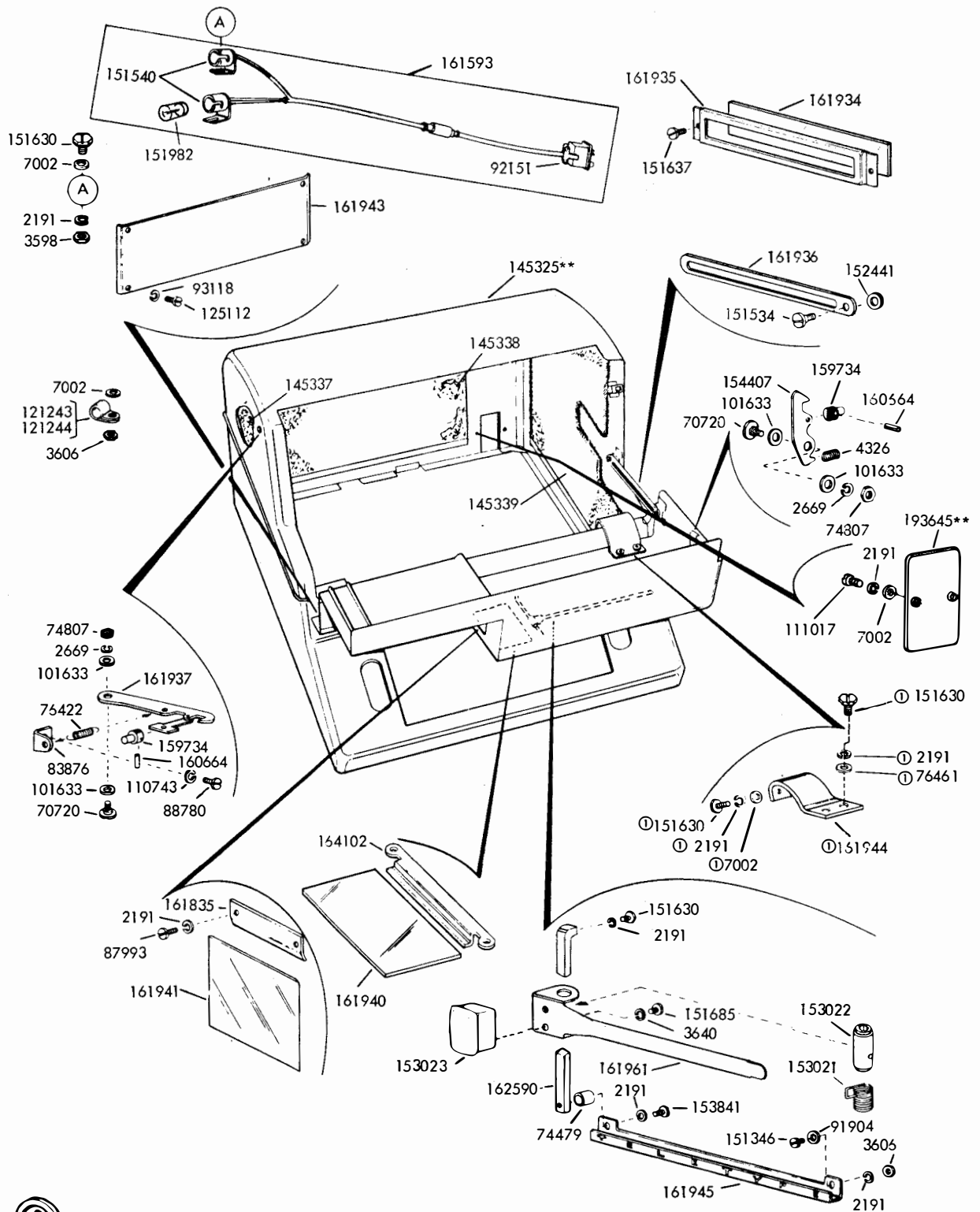
**Refer to page 1 for finish suffix

FIGURE 3. RECEIVING-ONLY TYPING REPERFORATOR COVER (Miniaturized)



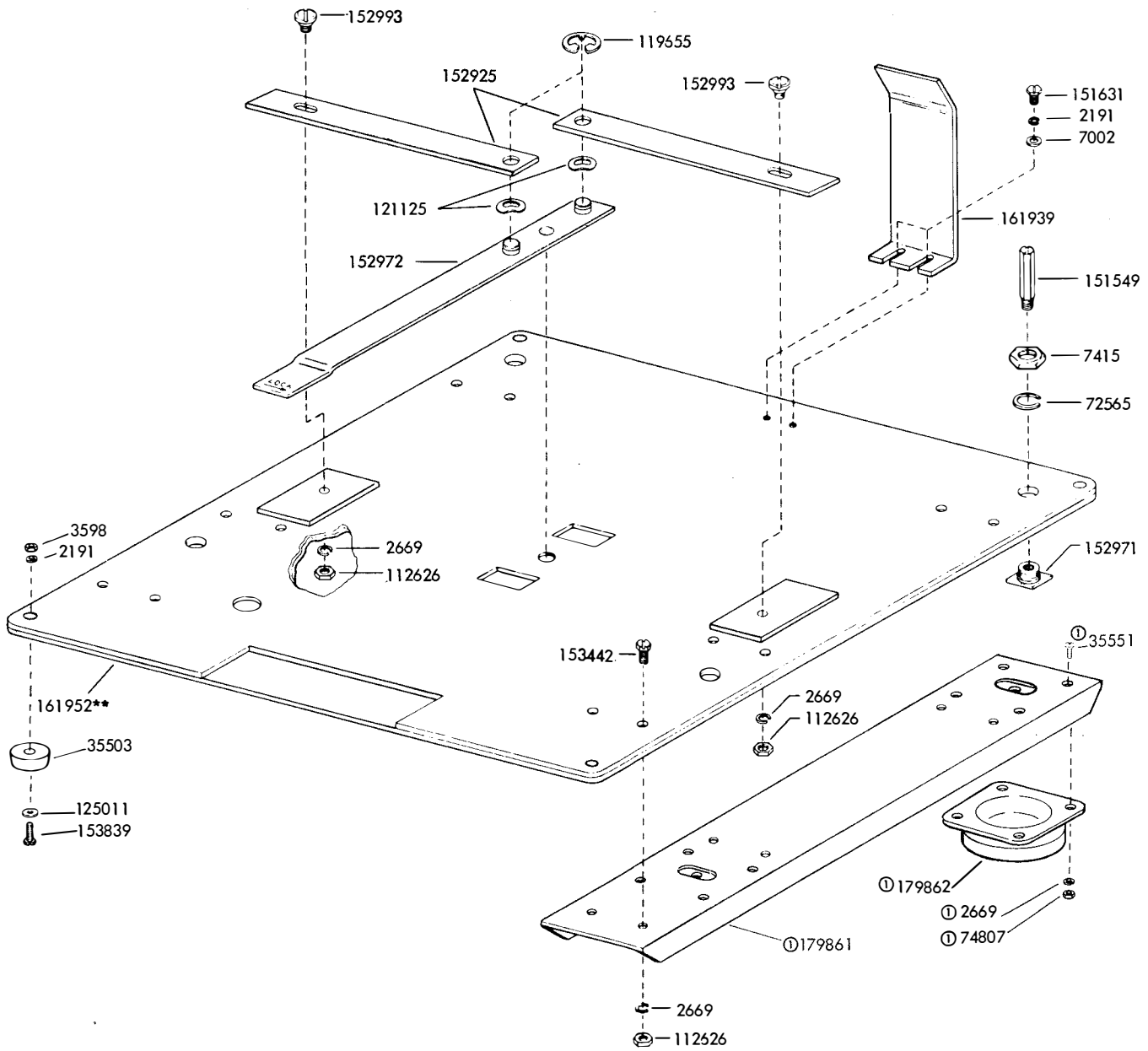
**Refer to page 1 for finish suffix

FIGURE 4. TAPE PRINTER COVER



⓪ Supplied w/145325**
 **Refer to page 1 for finish suffix

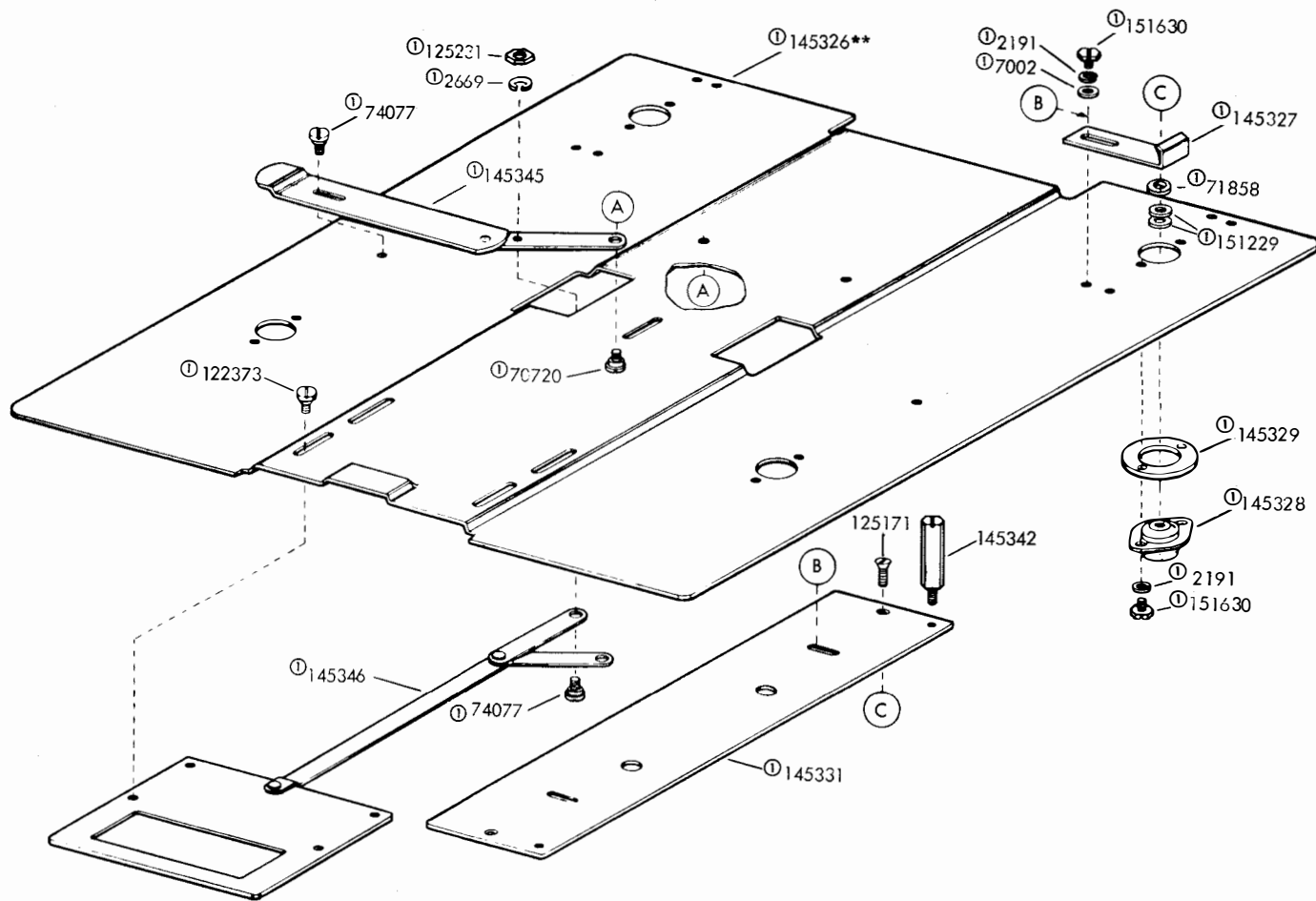
FIGURE 6. SEND-RECEIVE COVER



Ⓢ161949 Vibration Mount Assembly

**Refer to page 1 for finish suffix

FIGURE 7. TAPE PRINTER SUB-BASE



①145340** Plate Assembly

**Refer to page 1 for finish suffix

FIGURE 8. TAPE PRINTER SUB-BASE

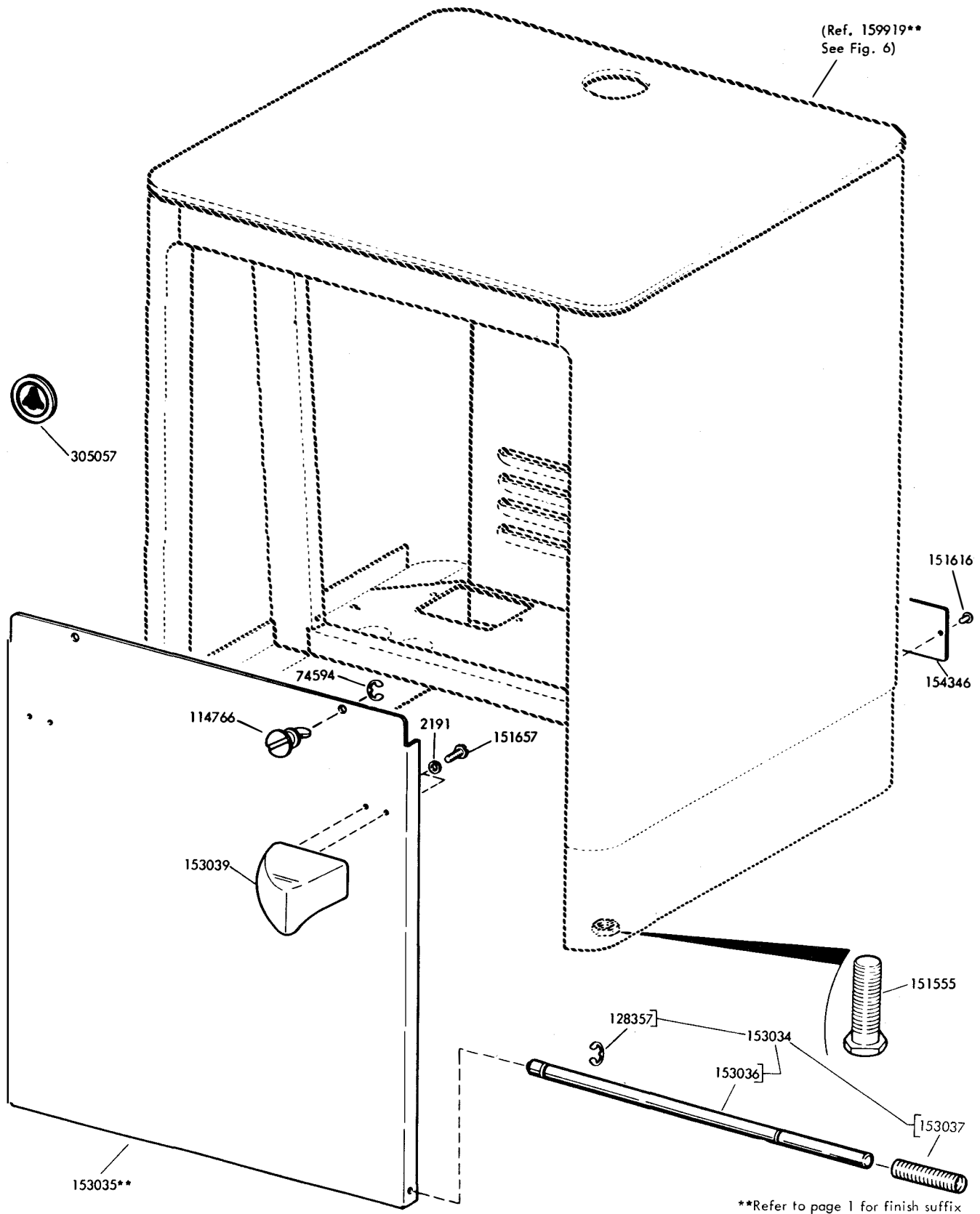


FIGURE 9. TABLE (w/Full Door)

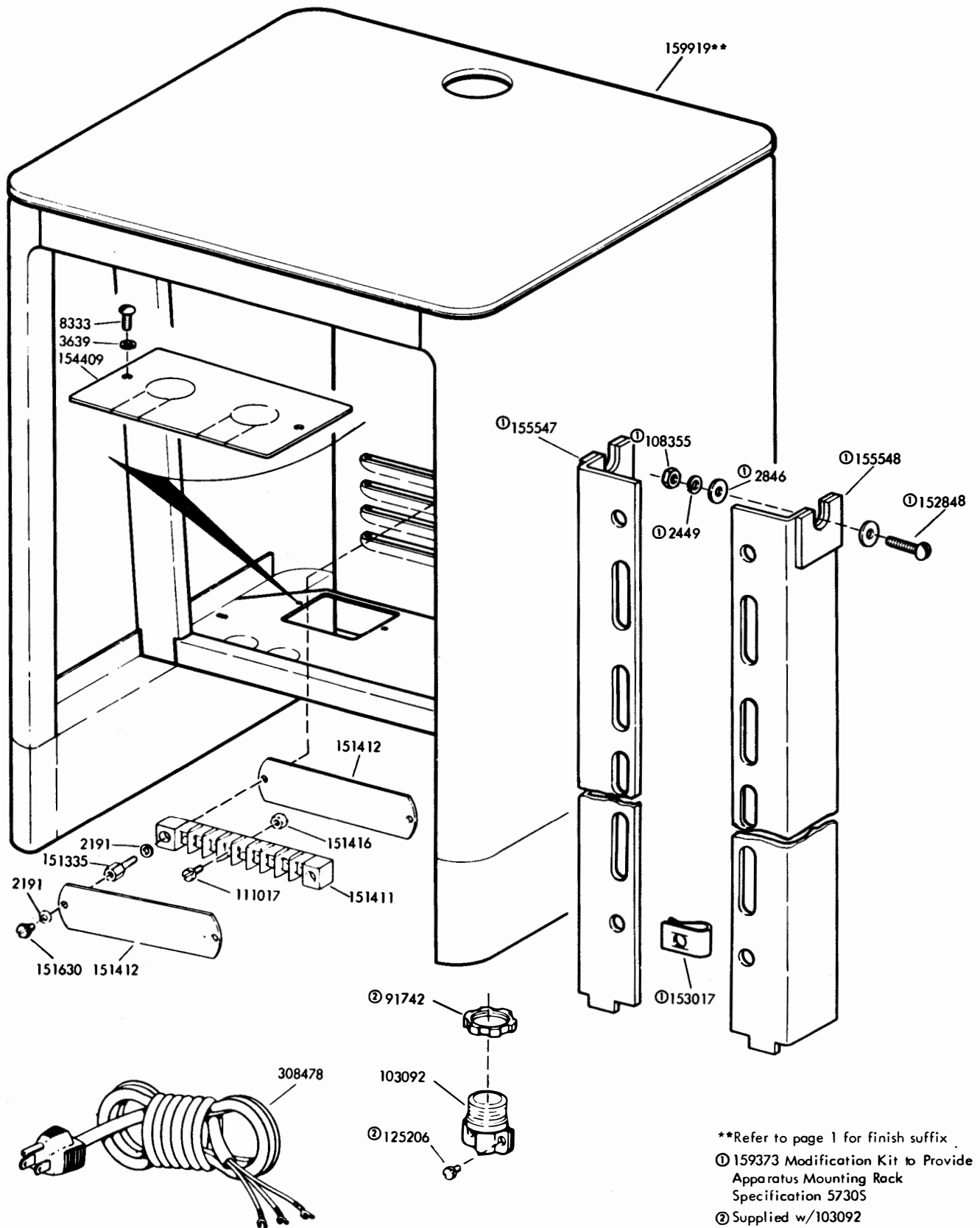


FIGURE 10. TABLE (w/Full Door - Continued)

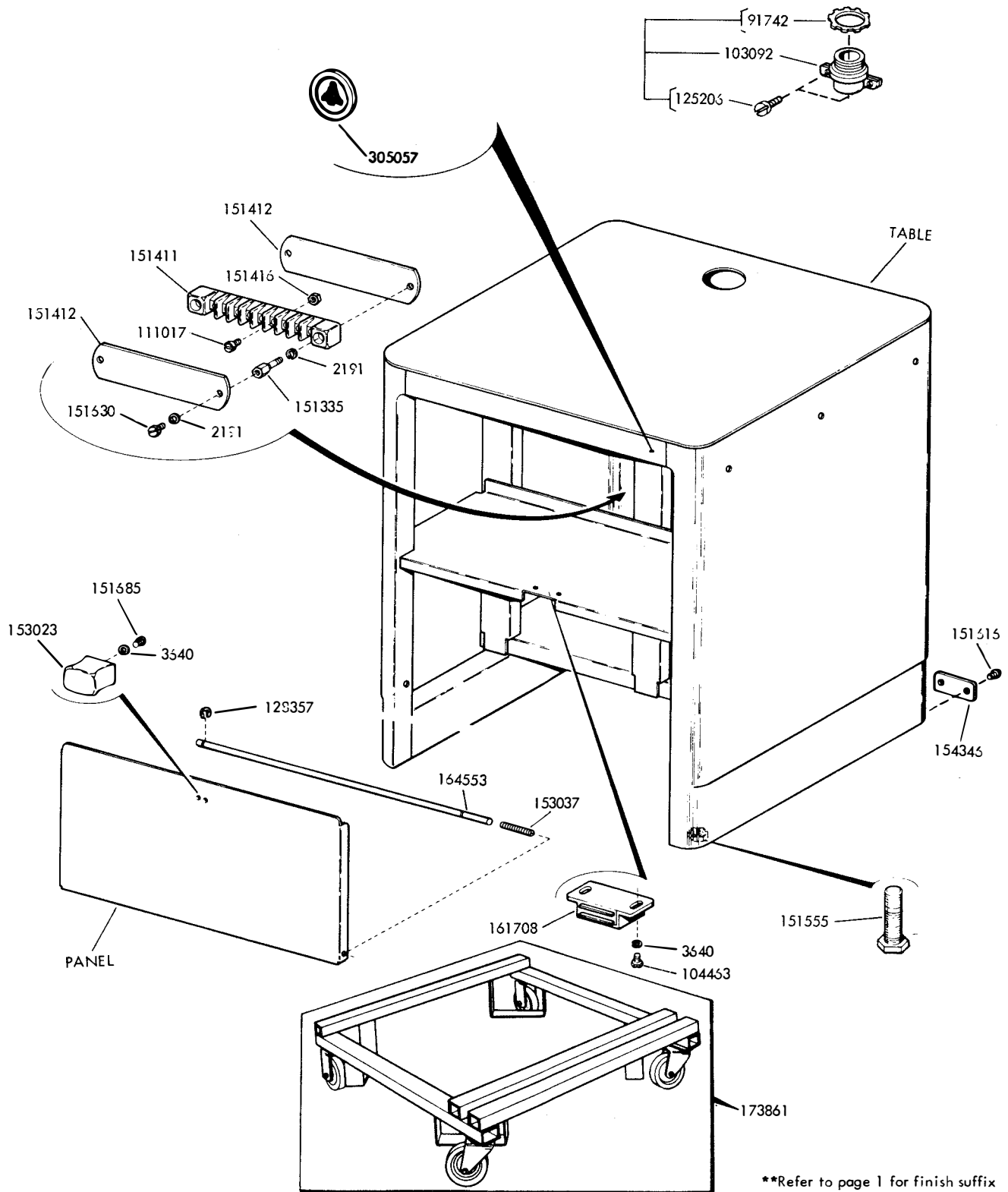


FIGURE 11. TABLE WITH FIXED LOWER SHELF

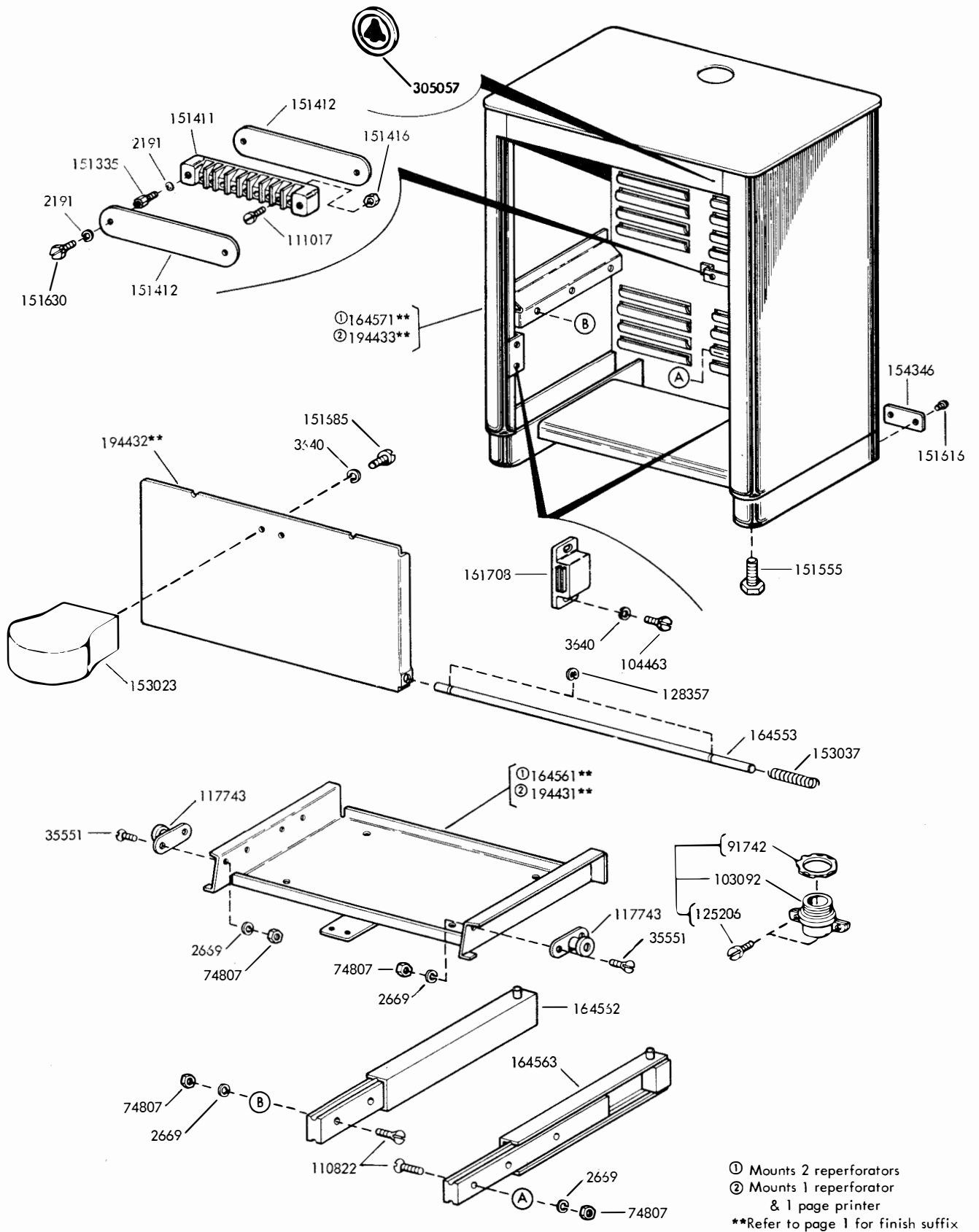
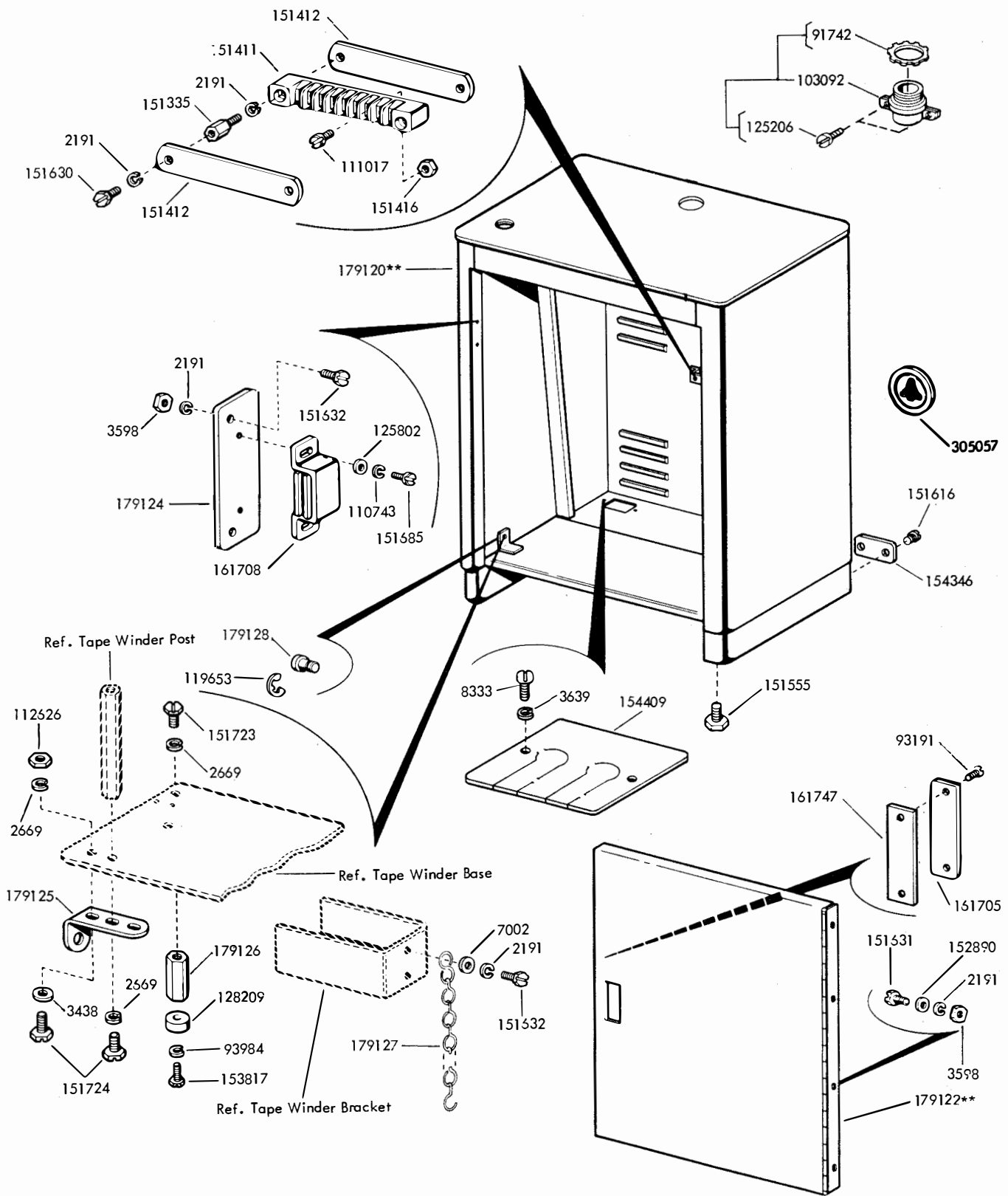
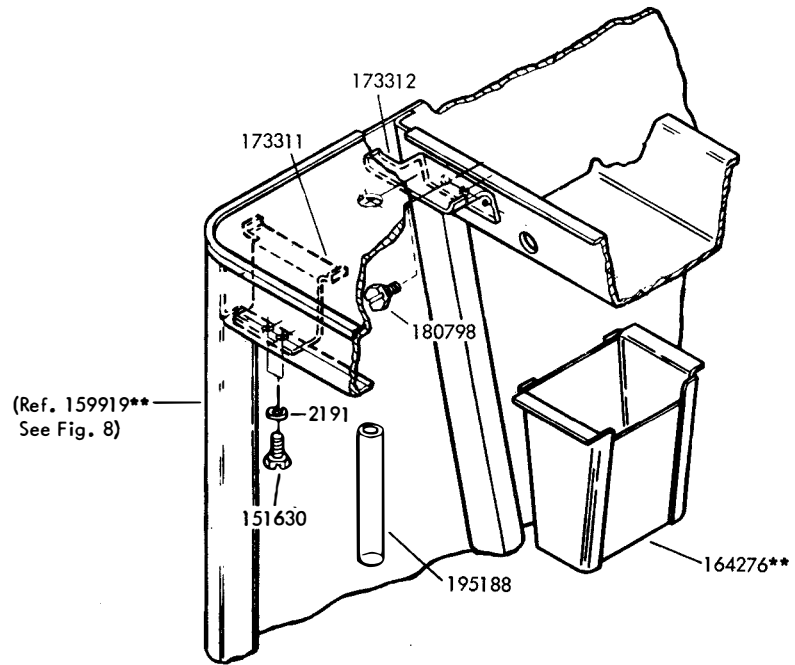


FIGURE 12. TABLE WITH SLIDING LOWER SHELF



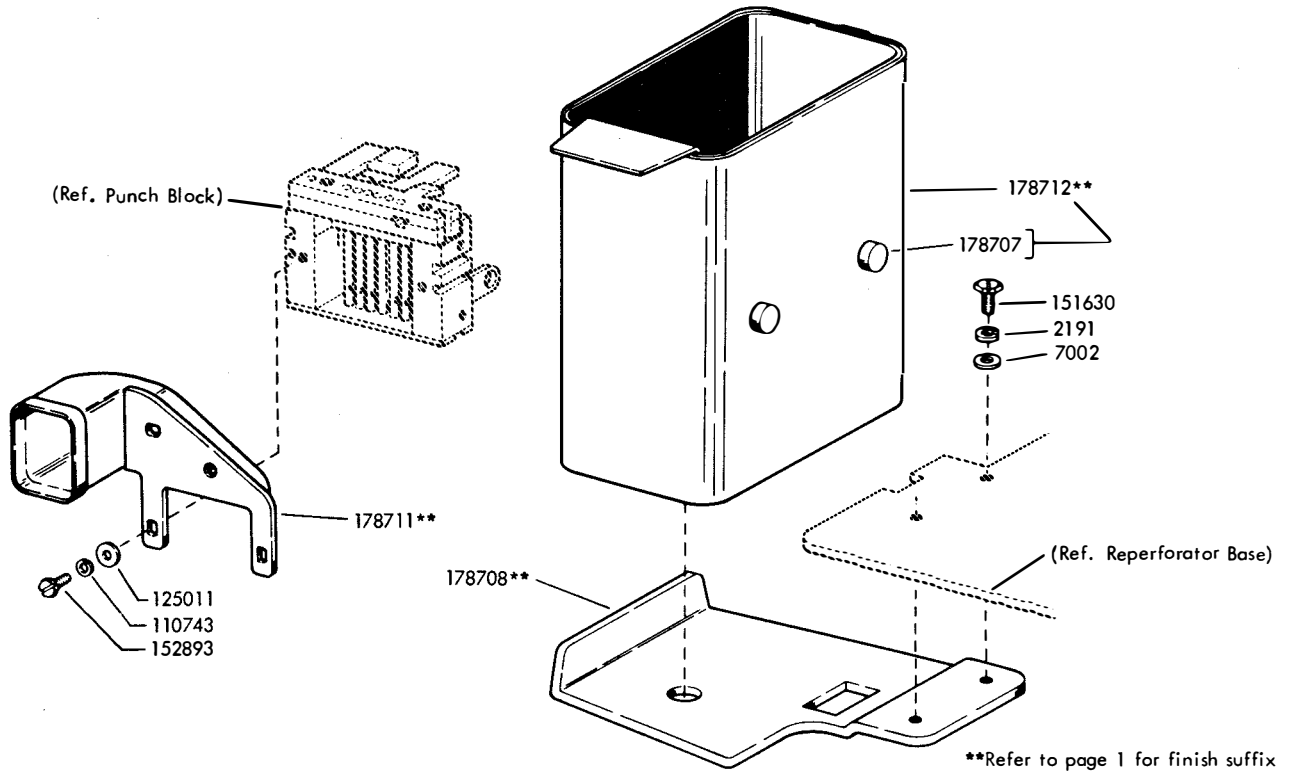
**Refer to page 1 for finish suffix

FIGURE 13. TABLE WITH FACILITIES FOR TAPE WINDER



**Refer to page 1 for finish suffix.

FIGURE 14. 176615** MODIFICATION KIT TO ADAPT BASE AND TABLE FOR USE WITH FULLY PERFORATED PUNCHES



**Refer to page 1 for finish suffix

FIGURE 15. 193684** CHAD DISPOSAL, SET OF PARTS

NUMERICAL INDEX

Part Number	Description and Page Number	Part Number	Description and Page Number	Part Number	Description and Page Number
2191	Washer, Lock 2 to 15	111017	Screw, 6-40 x 5/16 Fil 7,11,12,13,14	151630	Screw, 6-40 x 1/4 Hex 4,6,7,9,11,12,13,14,15
2449	Washer, Lock 11	111346	Spring, Compression 4	151631	Screw, 6-40 5/16 Hex 4,6,8,14
2669	Washer, Lock 6,7,8,9,13,14	112626	Nut, 10-32 Hex 8,14	151632	Screw, 6-40 x 3/8 Hex 14
2846	Washer, Flat 11	114766	Stud 10	151637	Screw, 4-40 x 1/4 Fil 7
3438	Washer, Flat 14	117743	Roller 13	151657	Screw, 6-40 x 1/4 Fil 10
3598	Nut, 6-40 Hex 3,4,6,7,14	119652	Ring, Retaining 6	151658	Screw, 6-40 x 5/16 Fil 6
3599	Nut, 4-40 Hex 4	119653	Ring, Retaining 4,5,14	151685	Screw, 4-40 x 5/16 Fil 2,3,7,12,13,14
3606	Nut, 6-40 Hex 2,3,4,5,6,7	119655	Ring, Retaining 8	151722	Screw, 6-40 x 3/16 Hex 6
3639	Washer, Lock 11,14	121125	Washer, Spring	151723	Screw, 10-32 x 3/8 Hex 14
3640	Washer, Lock 2,3,7,12,13	121243	Clamp, 3/16 ID Cable 7	151724	Screw, 10-32 x 5/8 Hex 14
4326	Spring, Compression 6,7	121244	Clamp, 1/4 ID Cable 7	151982	Lamp, 6V Incandescant 7
6345	Nut, 6-32 Hex 4,6	122373	Screw, 6-40 Shoulder 9	152426	Nut, 6-40 Self-Locking 6
7002	Washer, Flat 4 to 9,14,15	125011	Washer, Flat 3,8,15	152441	Washer, Flat 7
7415	Nut, 1/2-32 Hex 8	125112	Screw, 2-56 x 1/8 Fil 7	152848	Screw, 1/4-20 x 3/4 Rd 11
8333	Screw, 10-32 x 3/8 Rd 11,14	125171	Screw, 10-32 x 1/2 Flat 9	152890	Washer, Flat 14
35503	Foot, Rubber 8	125206	Screw, 6-32 x 5/8 Fil 11,12,13,14	152893	Screw, 4-40 x 1/4 Hex 3,15
35551	Screw, 10-32 x 3/8 Flat 8,13	125231	Nut, 10-32 Hex 9	152925	Latch 8
70314	Washer, Flat 2,3	125802	Washer, Flat 14	152971	Bushing 8
70720	Screw, 10-32 Shoulder 6,7,9	128209	Bumper, Rubber 14	152972	Handle w/Studs 8
71858	Washer, Flat 4,5,9	128357	Ring, Retaining 10,12,13	152993	Screw, 10-32 Shoulder 8
72565	Washer, Lock 8	142619	Guide, Tape 2,3	152997	Screw, 10-32 Shoulder 8
74077	Screw, 10-32 Shoulder 9	142734	Knife, Tape 2,3,	153017	Nut, Speed 11
74479	Bushing 7	145325**	Cover 7	153021	Spring, Torsion 7
74594	Ring, Retaining 10	145326**	Plate, Base 9	153022	Bushing 7
74807	Nut, 10-32 Shoulder Hex 6,7,8,13	145340**	Plate Assembly 9	153023	Handle 2,3,7,12,13
75606	Spring 6	145342	Screw, 1/4-32 Spl 9	153034	Shaft Assembly 10
76099	Washer, Flat 6	145345	Bolt w/Lever, Latch 9	153035**	Panel 10
76422	Spring 7	145346	Lever, Reset 9	153036	Shaft 10
76461	Washer, Flat 7	150711	Washer, Flat 3	153037	Spring 10,12,13
83876	Bracket, Spring 7	151229	Washer, Flat 9	153039	Handle 10
85762	Washer, Flat 5	151335	Stud 11,12,13,14	153442	Screw, 10-32 x 1/12 Hex 8
87993	Screw, 6-40 x 5/32 Fil 7	151346	Screw, 6-40 x 3/8 Fil 7	153448	Catch 6
88780	Screw, 4-40 x 3/16 Hex 7	151411	Block, Terminal 11,12,13,14	153449	Spring, Compression 6
88857	Washer, Spring 6	151412	Insulator, Terminal Block 11,12,13,14	153817	Screw, 4-40 x 3/8 Hex 14
91742	Nut, Lock 11,12,13,14	151416	Nut, 6-40 Hex 11,12,13,14	153839	Screw, 6-40 x 5/8 Hex 8
91904	Washer, Flat 7	151534	Screw, 10-32 Shoulder 7	153841	Screw, 6-40 x 9/16 Hex 7
92151	Connector, 3 Pt Plug 7	151540	Lampholder 7	154326	Cover, Insulating 9
93001	Washer, Flat 6	151549	Post 8	154346	Plate, Instruction 10,12,13,14
93118	Washer, Lock 7	151555	Foot, Mounting 10,12,13,14	154407	Latch 6,7
93191	Screw, 4-40 x 5/16 Flat 14	151558	Nut, Speed 6	154409	Plate 11,14
93984	Washer, Lock 14	151616	Screw, No. 2 Self-Tapping 10,12,13,14	155083	Lens, Red Indicator Light 6
101633	Washer, Flat 6,7	145327	Guide 9	155547	Bracket, Left 11
103092	Connector, Cord 11,12,13,14	145328	Mount, Vibration 9	155548	Bracket, Right 11
104463	Screw, 4-40 x 1/4 Hex 12,13	145329	Spacer, .065" Thk 9	158649	Screw, 4-40 Thumb 4
108355	Nut, 1/4-20 Hex 11	145331	Strap 9	159373	Modification Kit 11
110743	Washer, Lock 3,7,14,15	145337	Pad, Left Side 7	159734	Button 6,7
110822	Screw, 10-32 x 13/16 Flat 13	145338	Pad, Rear 7	159919**	Table Assembly 10,11,15
		145339	Pad, Right Side 7	159941	Handle 6

**Refer to page 1 for finish suffix

NUMERICAL INDEX (Continued)

Part Number	Description and Page Number	Part Number	Description and Page Number	Part Number	Description and Page Number
159943	Bracket, Window 6	162920	Chute, Chad 3	178708**	Bracket, Chad Box Mounting 15
159944	Window, Plastic 6	164102	Bracket, Window 7	178711**	Chute, Chad 15
159945	Washer, Friction 6	164276**	Container, Chad 15	178712**	Box, Chad 15
159946	Arm 6	164553	Shaft 12,13	179120**	Table 14
159948**	Cover w/Bracket 6	164561**	Tray 13	179122**	Door w/Hinge 14
159949**	Lid w/Hinge 6	164562	Slide, Left 13	179124	Plate, Latch Mounting 14
160664	Pin, Roll 6,7	164563	Slide, Right 13	179125	Bracket, Mounting 14
160974	Arm, Stop 4,5	164571**	Table Assembly 13	179126	Post 14
161593	Cable Assembly 7	164763**	Plate, Mounting 3	179127	Chain, 15" Lg 14
161682	Clip, Cover 6	164875	Pad, Felt 3	179128	Stud 14
161705	Strike, Fastener 14	173311	Bracket, Front Guide 15	179861	Bracket 8
161708	Latch, Magnetic 12,13,14	173312	Bracket, Rear Guide	179862	Mount, Shock 8
161747	Plate, Nut 14	173861	Cart 12	180798	Screw, 8-32 Self-Tapping 15
161835	Plate, Clamp 7	174404	Guide, Tape 6	193645**	Plate, Cover 7
161934	Window, Plastic 7	174405	Handle 6	193682**	Cover 2
161935	Frame, Window 7	174406	Arm 6	193683	Pad, Felt 2
161936	Link 7	174407	Lever 6	193684**	Set of Parts 1,15
161937	Latch w/Link 7	174408	Guide 6	194431**	Tray 13
161939	Bracket, Guide 8	176089	Gasket, Window 4	194432**	Panel 13
161940	Window, Front 7	176096**	Cover w/Studs 4	194433**	Table 13
161941	Window, Side 7	176097**	Lid 4	195132**	Cover 5
161943	Plate 7	176098	Fastener 4	195133**	Lid, Cover 5
161944	Bracket, Hinge 7	176101	Guide, Tape 4	195134	Clamp 5
161945	Copyholder 7	176102	Bolt 4	195135	Window, Plastic 5
161949	Mount Assembly, Vibration 8	176103	Window, Plastic 4	195138	Guide, Tape 5
161952**	Plate 8	176104	Window Assembly 4	195181	Guide w/Adhesive, Tape 6
161961	Guide, Line 7	176105	Bracket 4	195188	Chute, Chad 15
162189**	Cover w/Latch 6	176106	Bracket 4	195271	Modification Kit 6
162191	Bracket, Guide 6	176107	Handle 4	199277	Plate, Name 5
162195	Arm, Slide 6	176108	Bracket 4	305057	Plate, Identification 2,3,6,7,10,12,13,14
162590	Shaft 7	176110	Plate, Identification 4	308478	Cord, Power 11
162846	Modification Kit 6	176615**	Modification Kit 1,15		
162916	Guide, Lower 2,3	178707	Bumper, Rubber 15		
162917	Guide, Upper 2,3				

**Refer to page 1 for finish suffix

