

28 TRANSMITTER AND TRANSMITTER - DISTRIBUTOR BASE (LXDB)  
AND  
28 MULTIPLE TRANSMITTER - DISTRIBUTOR BASE (LMBX)  
PARTS

FIGURE	CONTENTS	PAGE	FIGURE	CONTENTS	PAGE
1	Base and Electrical Components	2	9	174365** and 179284** (Miniature) Modification Kits to Adapt a Transmitter Distributor Base as a Replacement for a Model 14 Transmitter Distributor	10
2	Miniature Base and Electrical Components	3	10	Cable Components	11
3	Miniature Base and Electrical Components (Continued)	4	11	Pan, Bracket and Bars to Mount Mechanically Coupled Dual Transmitter Distributor	12
4	Multiple Mounting Base	5	12	195442 and 195443 Modification Kits: To Add Three Speed Gearshift Assemblies	13
5	Drive Mechanism for Single Mounted Units or Multiple Mounted Units Driven at a Common Speed	6	13	195442 and 195443 Modification Kits: To Add Three Speed Gearshift Assemblies (Continued)	14
6	Drive Mechanism for Multiple Mounted Units Driven at Independent Speeds	7		Numerical Index	15
7	Shaft Mechanism for Multiple Mounted Units	8			
8	163317 (5 Level) and 194339 (6 Level and Up) Modification Kits to Provide Multiple Wire Output for the Transmitter Distributor Base (LXDB)	9			

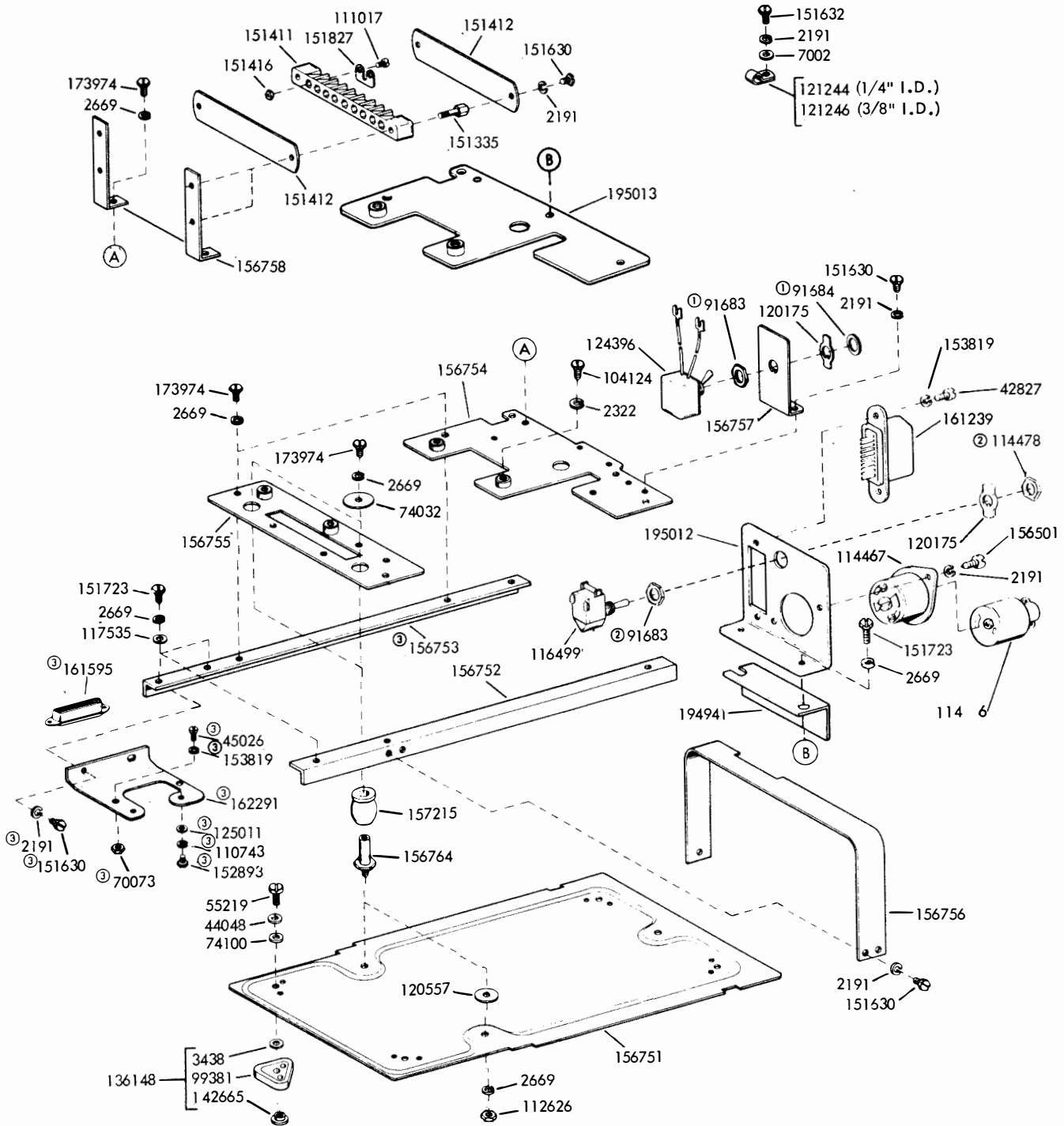
PAINT FINISH COLOR CODE CHART				
COLOR	Finish Suffixes			
	Wrinkle Finish	Smooth Finish	Textured Vinyl	Smooth Vinyl
Black	AA(37)	BA(34)		
Black, High Gloss	AD(38)			
Brown, Dark	AC(39)		GA(45)	
Brown, Light	AB(40)			HB(68)
Gray, Green				HF(46)
Gray, Light				
Gray, Olive				
Green, Gray	AB(40)		GA(45)	

The double asterisk (\*\*) denotes a painted part.  
Suffix to be applied following the part number.  
Number in parentheses indicates Bell System Code.

UNIT	TELETYPE CODE	BELL SYSTEM CODE
MULTIPLE TRANSMITTER BASE	LMBX202**	28J**
GEARS	156658	28G
	156658	28H
	156659	28J

LXDB1 is Part of Bell System 28E\*\*Mounting and Cover Assembly  
LXDB3 is Part of Bell System 28H\*\*Mounting and Cover Assembly  
LXDB5 is Part of Bell System 28H-1\*\*Mounting and Cover Assembly

NOTE:  
When ordering parts from this section, prefix each number with the letters TP.



- ① Supplied w/124396
- ② Supplied w/116499
- ③ 162463 Modification Kit to update Transmitter Distributor Base (Specification 58945)

FIGURE 1. BASE AND ELECTRICAL COMPONENTS

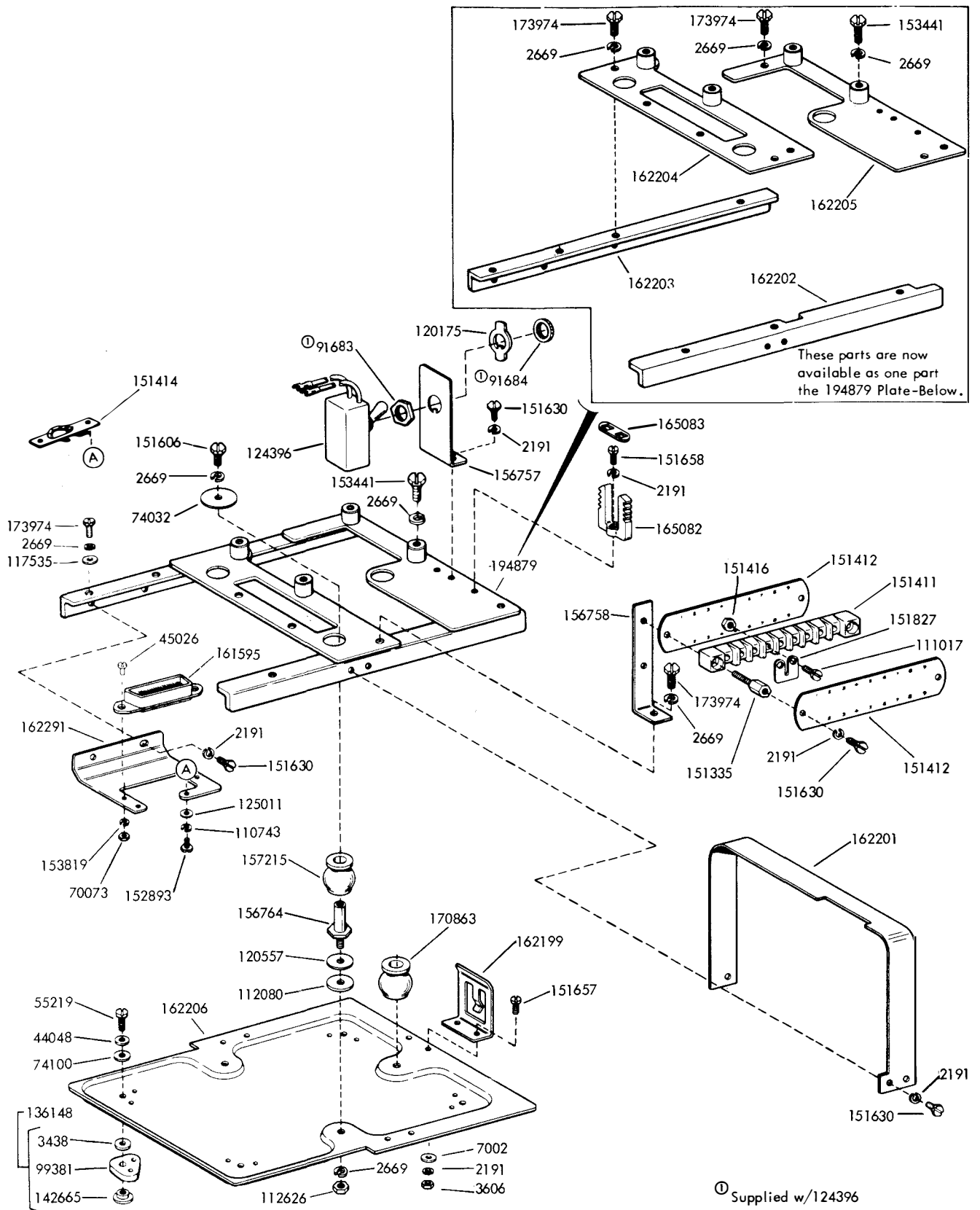
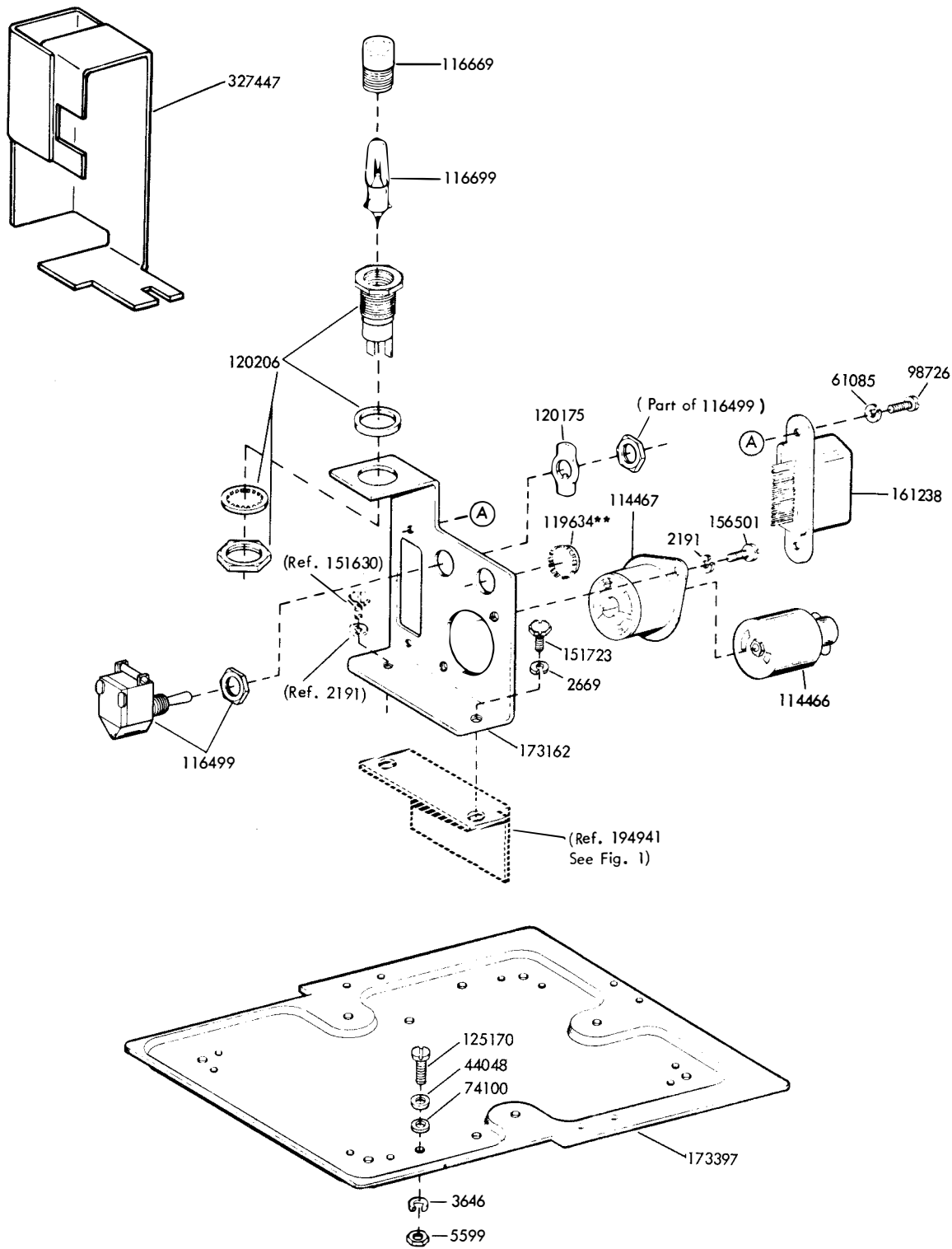
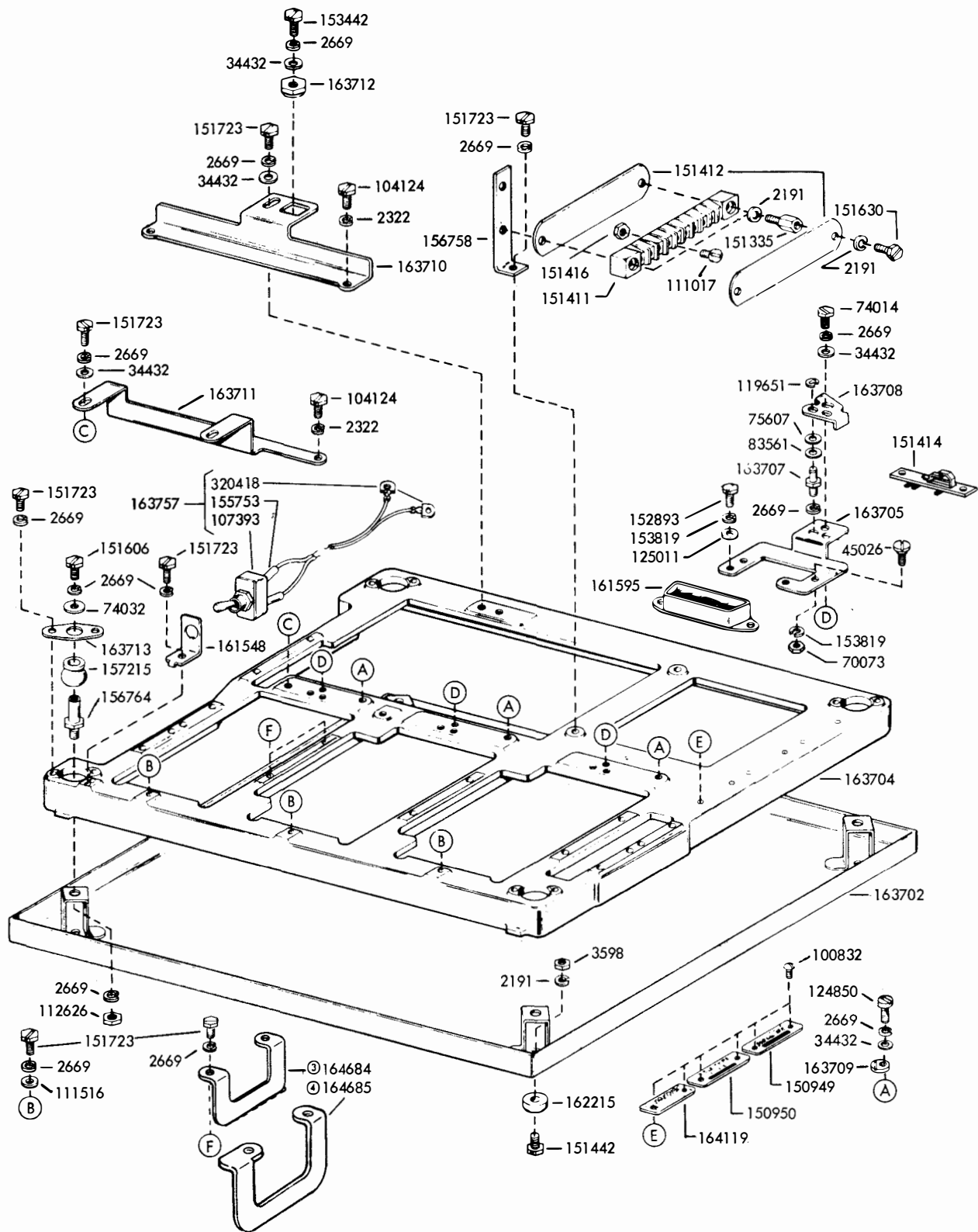


FIGURE 2. MINIATURE BASE AND ELECTRICAL COMPONENTS



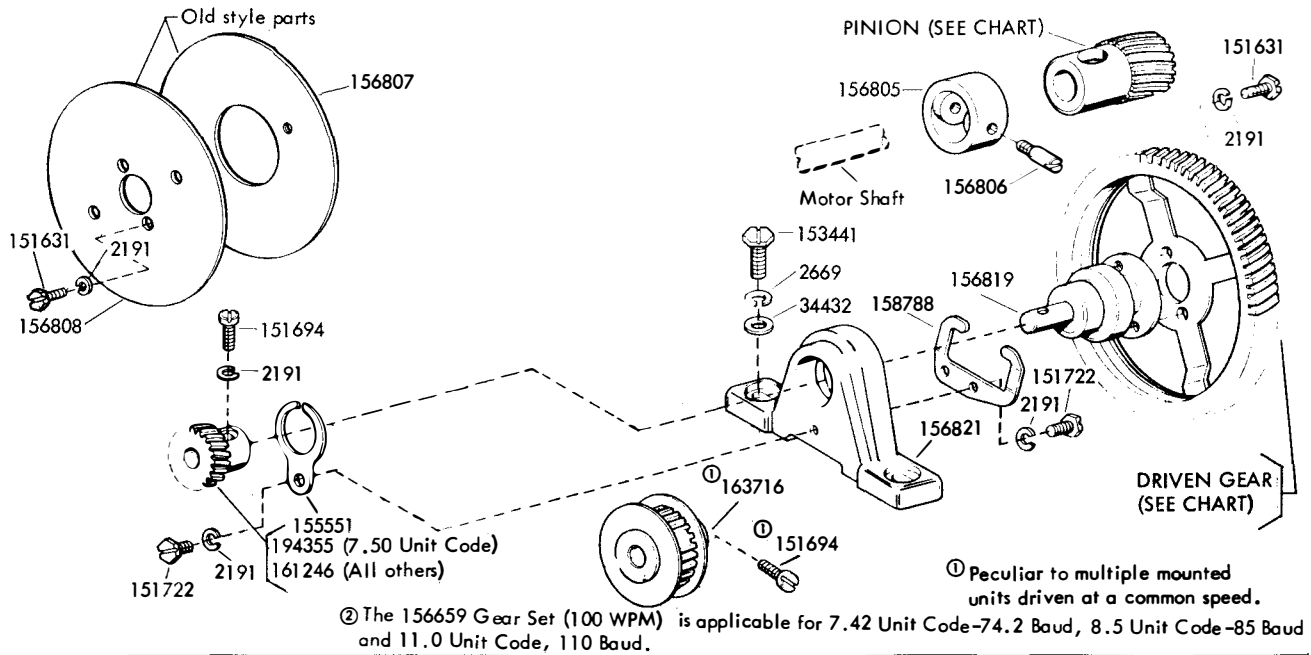
\*\*Refer to page 1 for finish suffix

FIGURE 3. MINIATURE BASE AND ELECTRICAL COMPONENTS (Continued)



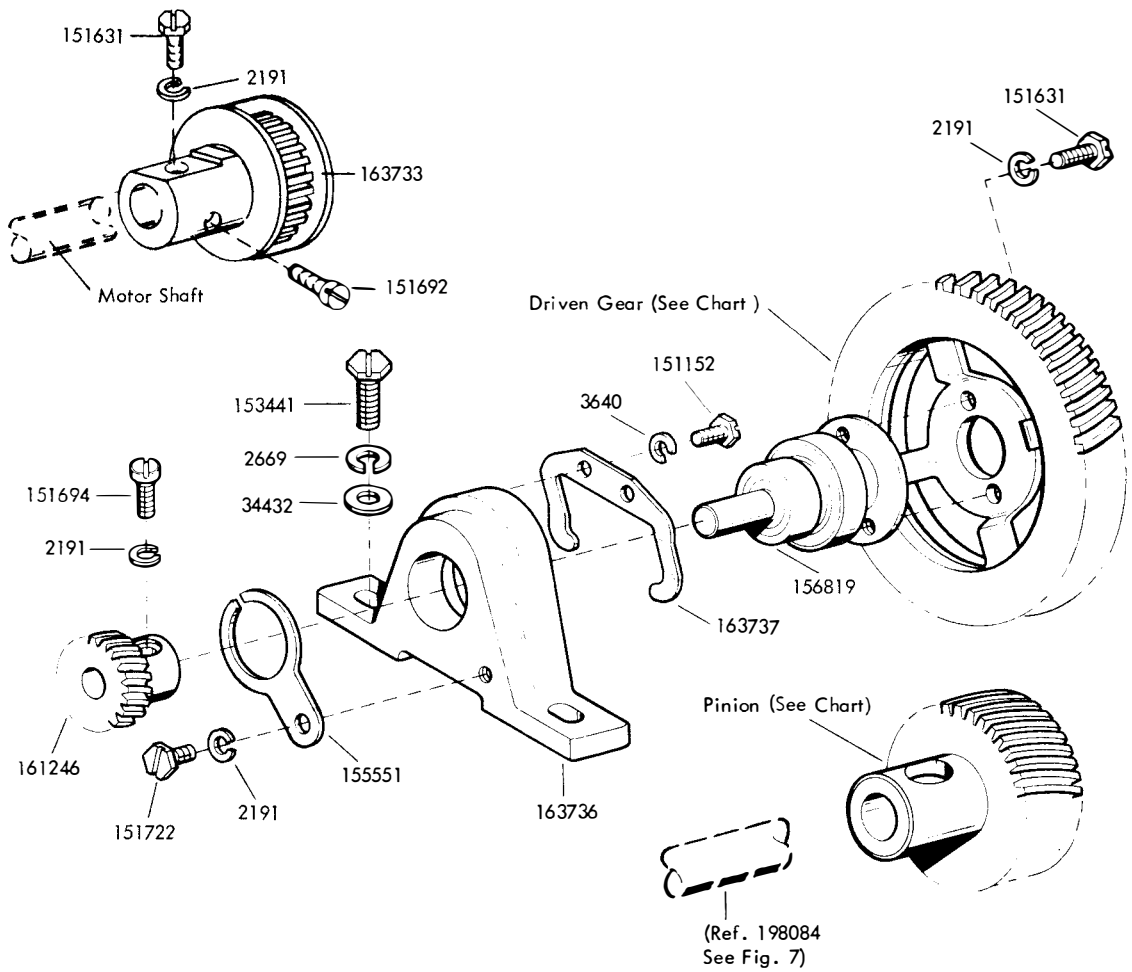
③ Peculiar to units driven at a common speed  
 ④ Peculiar to units driven at variable speeds

FIGURE 4. MULTIPLE MOUNTING BASE



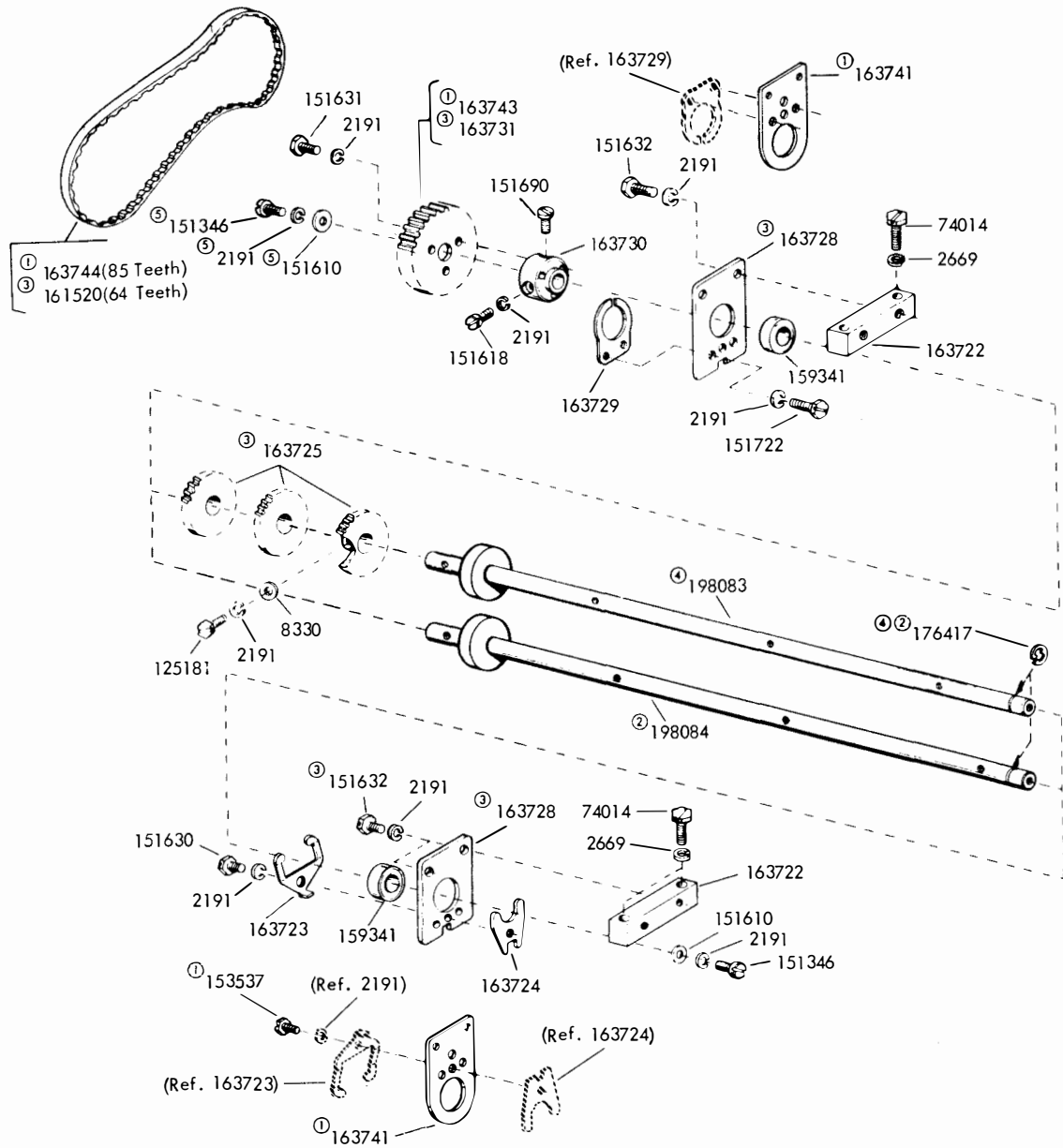
Gear Chart for Single Mounted Units or Multiple Mounted Units Driven at a Common Speed									
Speed	Set Number	Pinion	Driven Gear	Unit Code	Baud	Single	Multiple	RPM	Cycle
60 WPM	156658	156627 (18T)	156626 (88T)	7.42	45.45	X	X	3600	60
65 WPM	173598	173600 (26T)	173599 (120T)	7.00	45.5		X	3600	60
67 WPM	161358	161352 (11T)	161351 (49T)	7.42	50	X		3600	60
67 WPM	176152	176154 (22T)	176153 (98T)	7.42	50		X	3600	60
71 WPM	161359	161354 (15T)	161353 (63T)	7.00	50	X		3600	60
75 WPM	156728	156725 (24T)	156726 (94T)	7.42	56.9	X	X	3600	60
100 WPM	ⓐ156659	156629 (24T)	156628 (72T)	See Note ⓑ		X	X	3600	60
120 WPM	173427	173159 (32T)	173160 (80T)	8.5	102.9	X		3600	60
107 WPM	173595	173597 (30T)	173596 (84T)	7.00	75		X	3600	60
100 WPM	194348	194349 (52T)	194350 (104T)	7.50	75	X		3600	60
60 WPM	194353	194352 (17T)	194351 (56T)	7.50	45.5	X		3600	60
67 WPM	197697	197696 (21T)	197695 (78T)	7.42	50	X		3000	50
60 WPM	305534	305528 (26T)	305531 (106T)	7.42	45.5	X	X	3000	50
67 WPM	305535	305529 (28T)	305532 (104T)	7.42	50	X	X	3000	50
100 WPM	305536	305530 (40T)	305533 (100T)	7.42	74.2	X	X	3000	50
66 WPM	193622	192784 (25T)	192785 (112T)	8-8/13	57.69	X		3600	60
53 WPM	193665	192786 (20T)	192787 (112T)	8-8/13	46.15	X		3600	60
101 WPM	197618	197616 (31T)	197617 (92T)	7.42	75	X		3600	60
83.3 WPM		195429 (20T)	195430 (72T)	8.5	78	X		3600	60
58.8 WPM	308179	308177 (20T)	308178 (102T)	8.5	50	X	X	3600	60
58.8 WPM	308182	308180 (24T)	308181 (102T)	8.5	50	X	X	3000	50
53.7 WPM	308185	308183 (24T)	308184 (112T)	8.5	45.5	X	X	3000	50
66.9 WPM	308188	308186 (19T)	308187 (71T)	8.5	56.86	X	X	3600	60
71 WPM	323832	327339 (26T)	327340 (91T)	7.00	50.0	X	X	3000	50
65 WPM	323839	327337 (26T)	327338 (100T)	7.00	45.5	X	X	3000	50
107 WPM	323840	327341 (36T)	327342 (84T)	7.00	75.0	X	X	3000	50
68.2 WPM		328367 (20T)	328368 (88T)	7.00	75.0	X		3000	50

FIGURE 5. DRIVE MECHANISM FOR SINGLE MOUNTED UNITS OR MULTIPLE MOUNTED UNITS DRIVEN AT A COMMON SPEED



Gear Chart for Multiple Mounted Units Driven at Independent Speeds					
Speed	Set Number	Pinion	Driven Gear	Unit Code	Baud
60 WPM	173098	173100 (45T)	173099 (110T)	7.42	45.45
67 WPM	174346	174347 (44T)	174348 (98T)	7.42	50
75 WPM	173101	173103 (48T)	173102 (94T)	7.42	56.9
100 WPM	173104	173106 (56T)	173105 (84T)	7.42	74.2

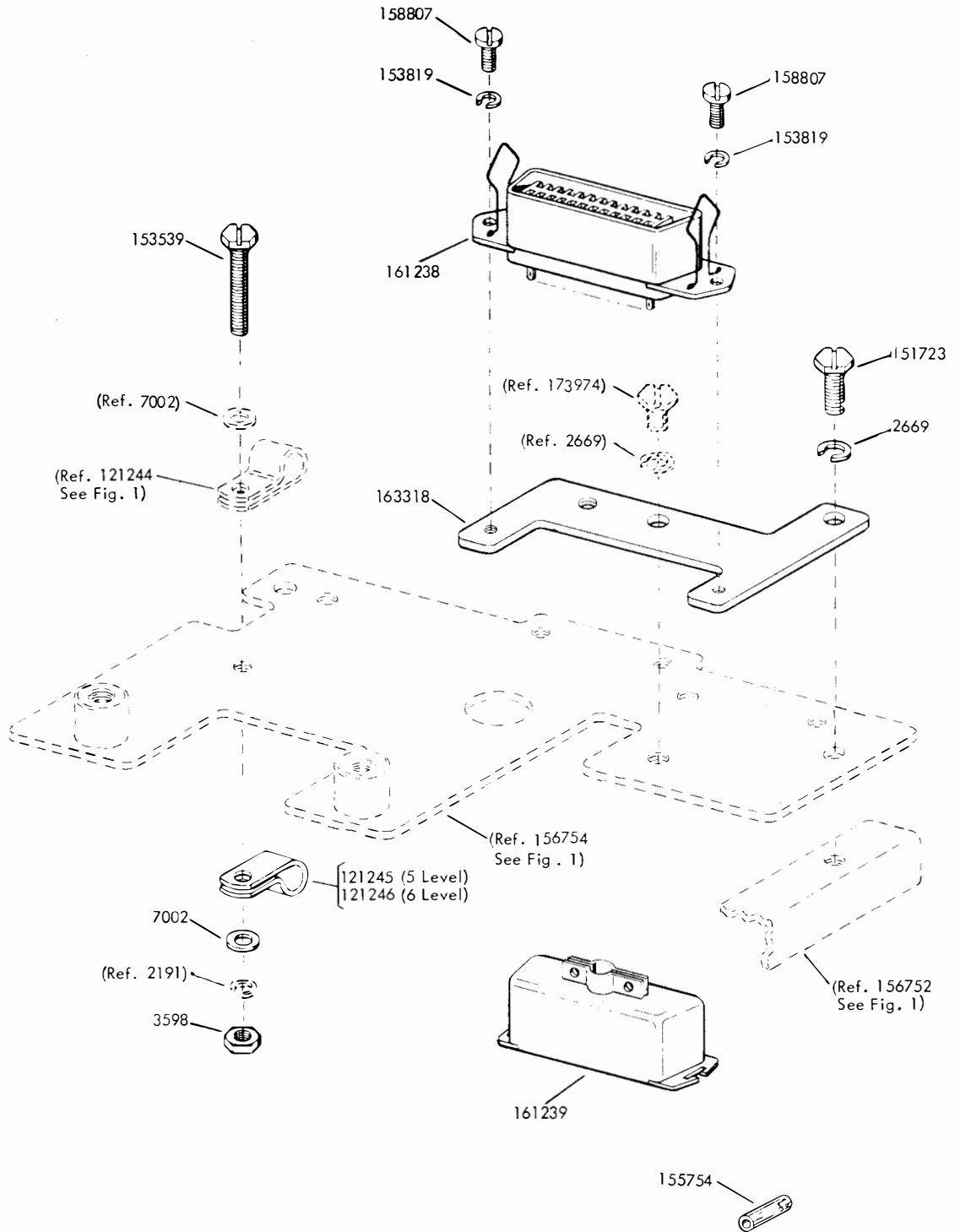
FIGURE 6. DRIVE MECHANISM FOR MULTIPLE MOUNTED UNITS DRIVEN AT INDEPENDENT SPEEDS



- ① Peculiar to units driven at independent speeds
- ② 198090 Modification kit to provide shaft w/bearing for units driven at independent speeds (Specification 502345)
- ③ Peculiar to units driven at a common speed
- ④ 198088 Modification kit to provide shaft w/bearing for units driven at a common speed (Specification 502345)
- ⑤ No longer required

FIGURE 7. SHAFT MECHANISM FOR MULTIPLE MOUNTED UNITS





Specification 59395

FIGURE 8. 163317 (5 LEVEL) AND 194339 (6 LEVEL AND UP) MODIFICATION KITS TO PROVIDE MULTIPLE WIRE OUTPUT FOR THE TRANSMITTER DISTRIBUTORBASE (LXDB)

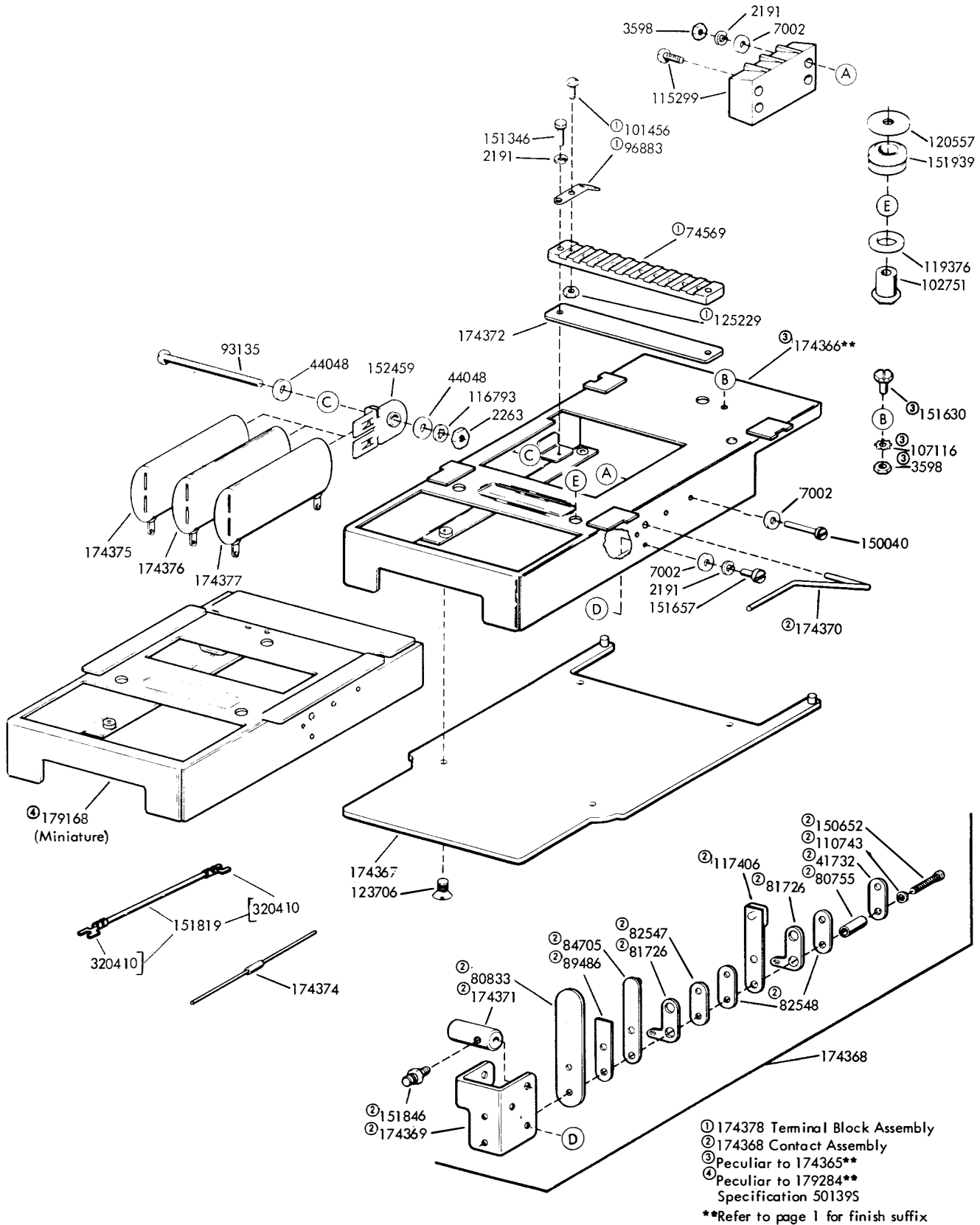


FIGURE 9. 174365\*\* AND 179284\*\* (MINIATURE) MODIFICATION KITS TO ADAPT A TRANSMITTER DISTRIBUTOR BASE AS A REPLACEMENT FOR A MODEL 14 TRANSMITTER DISTRIBUTOR

CABLE CLAMPS	
Part No.	I.D.
121242	1/8
121243	3/16
121244	1/4
121245	5/16
121246	3/8
121247	7/16
121248	1/2
121249	5/8
121250	3/4
121251	1

INSULATING SLEEVES		
Part No.	I.D.	Length
155750	3/32	1/2"
155751	1/8	1"
155752	5/64	1/2"
155753	1/8	1/2"
155754	1/16	1/2"
155755	11/64	5/8"

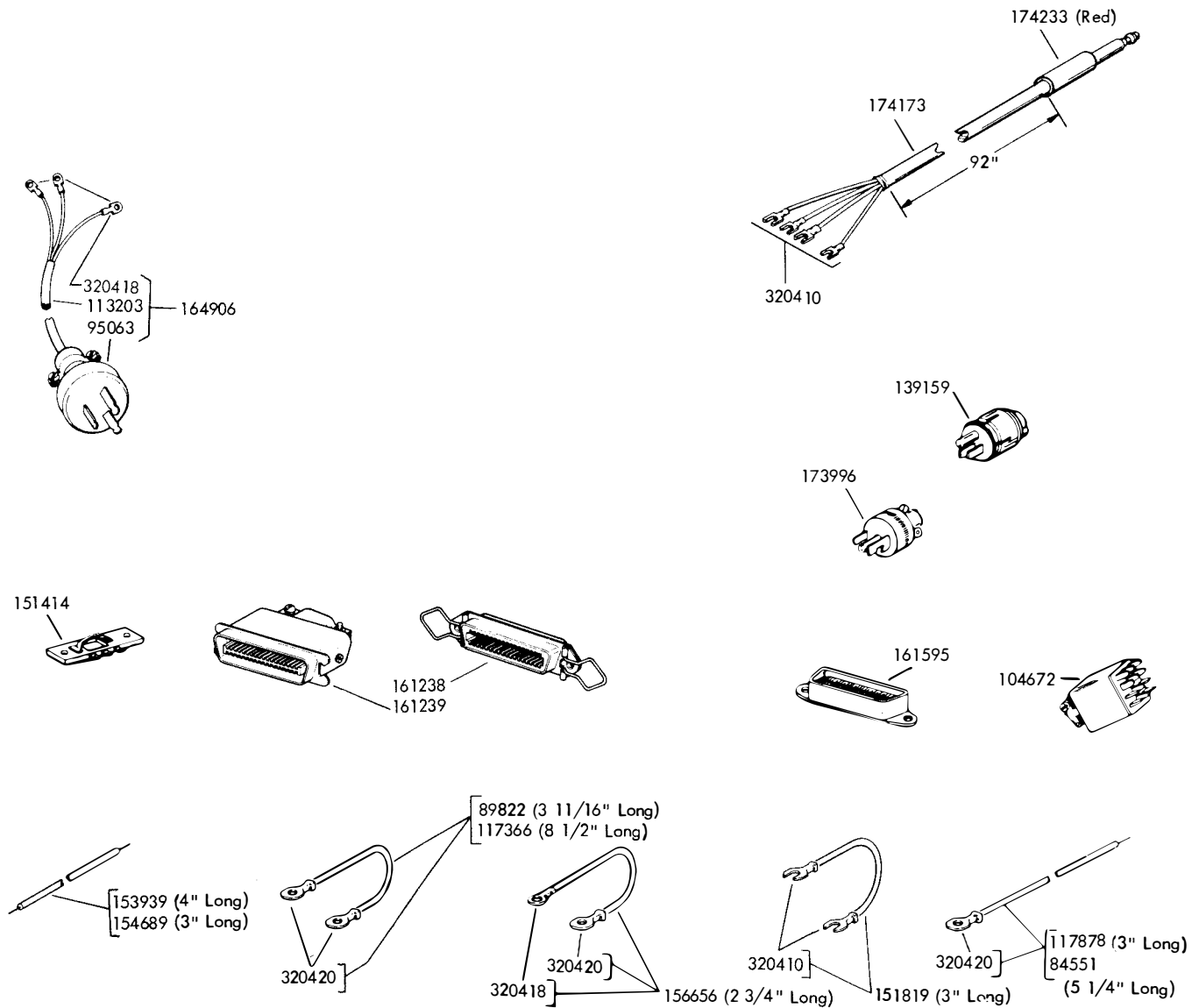


FIGURE 10. CABLE COMPONENTS

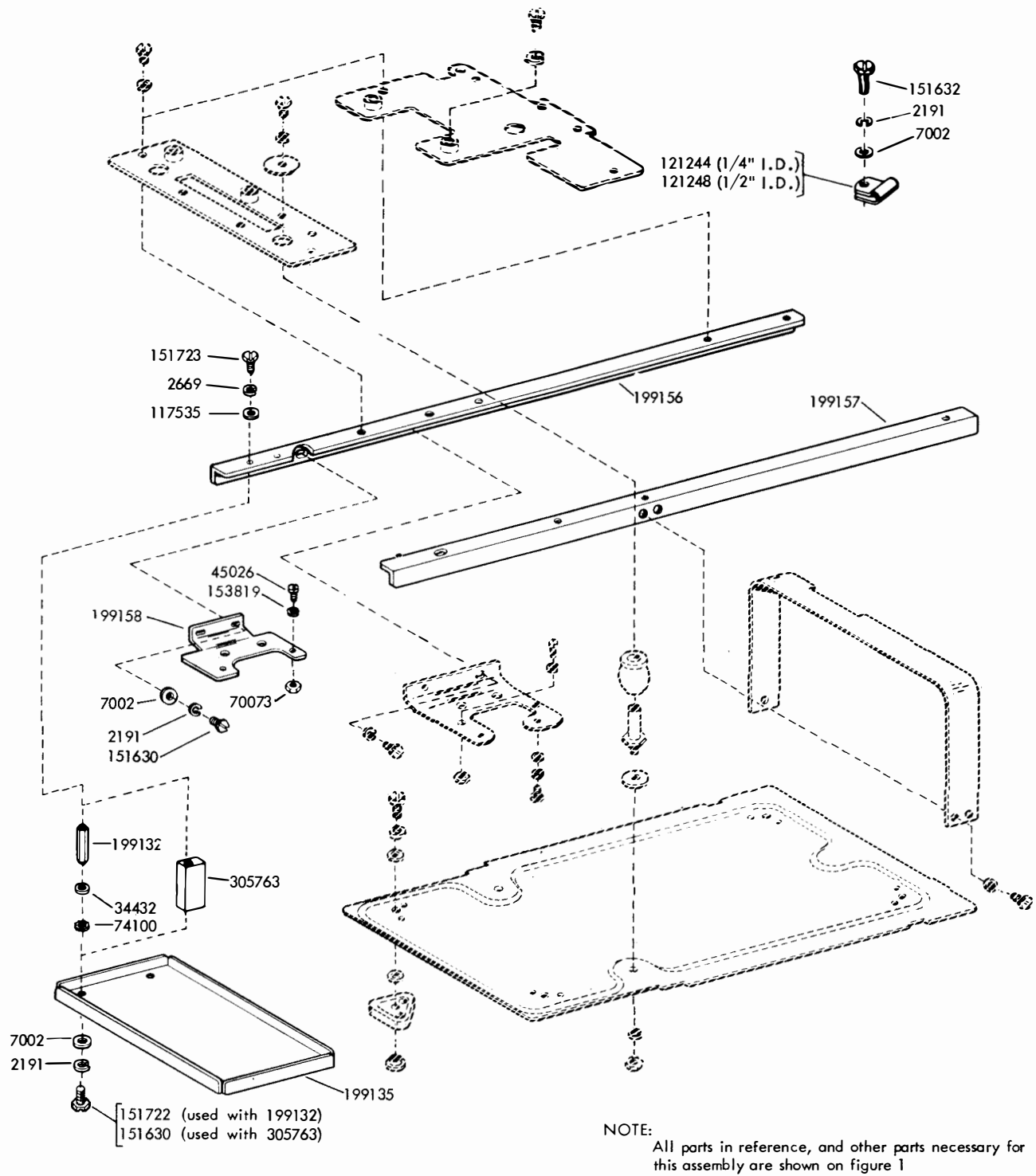
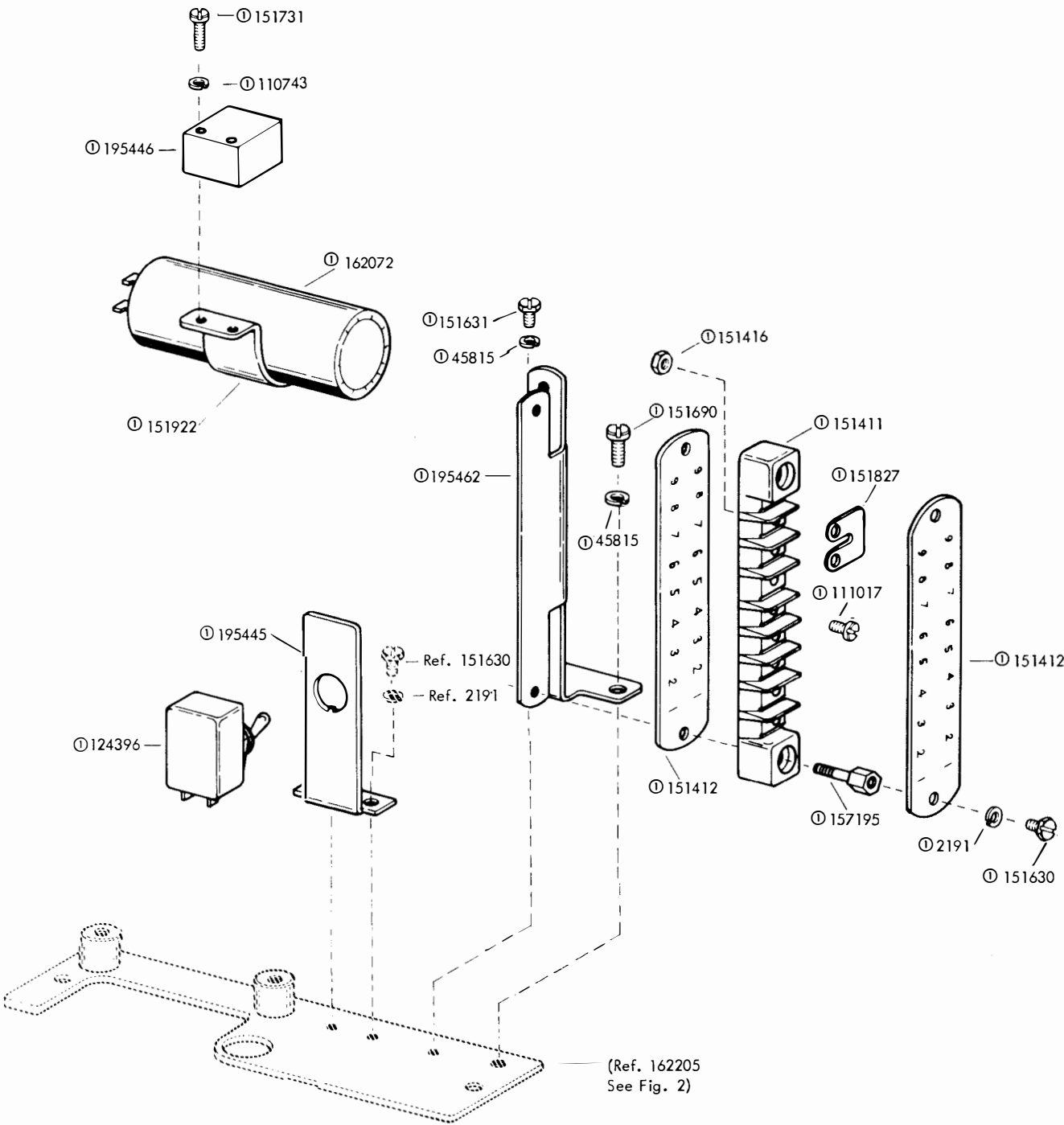


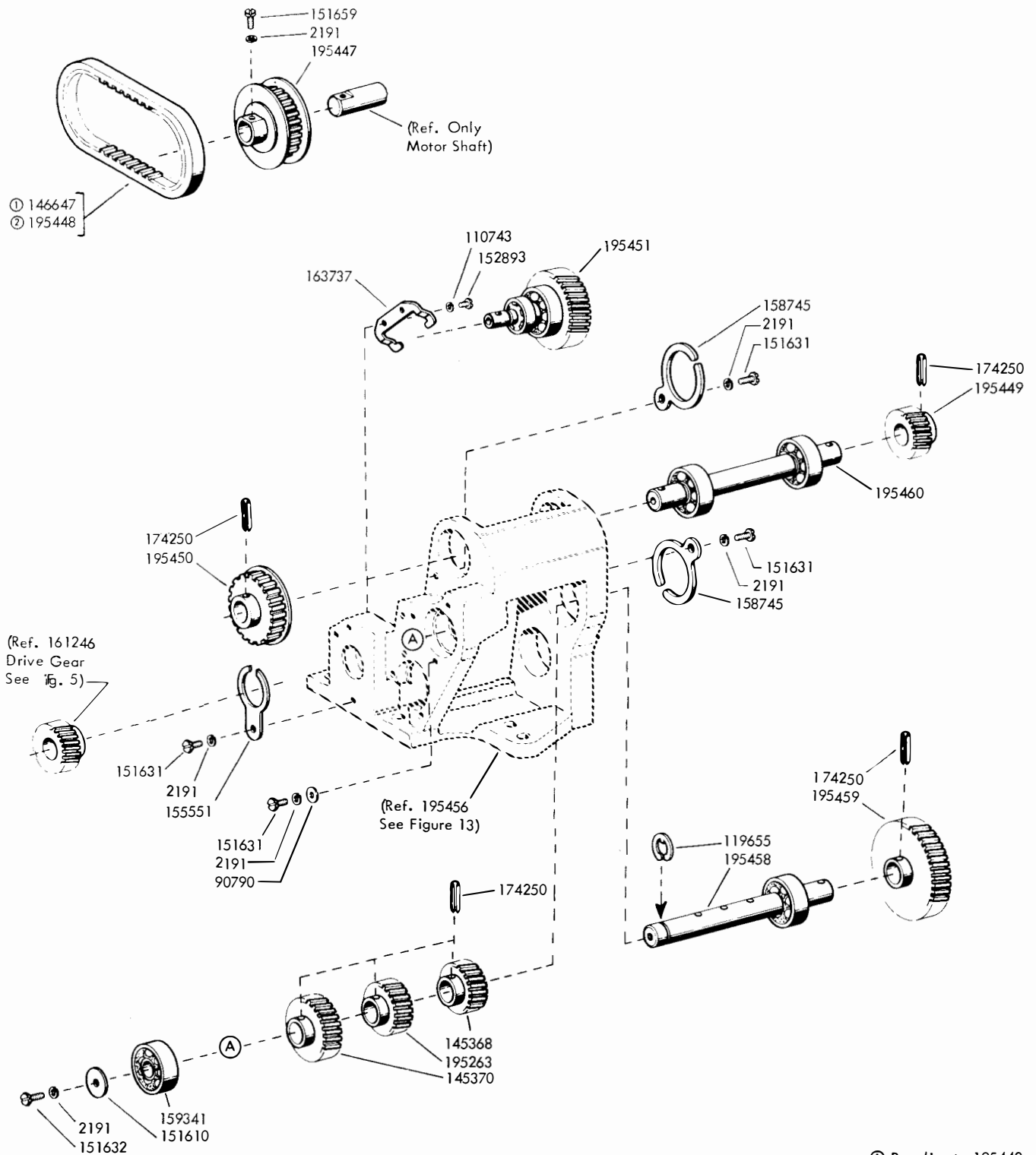
FIGURE 11. PAN, BRACKET AND BARS TO MOUNT MECHANICALLY  
COUPLED DUAL TRANSMITTER DISTRIBUTOR



① Part of 195443 Modification  
Kit also shown on Figs. 13 and 14.

FIGURE 12. 195442 and 195443 MODIFICATION KITS TO ADD  
THREE SPEED GEARSHIFT ASSEMBLIES





- ① Peculiar to 195442
- ② Peculiar to 195443

FIGURE 14. 195442 and 195443 MODIFICATION KITS TO ADD THREE SPEED GEARSHIFT ASSEMBLIES (Continued)

## NUMERICAL INDEX

Part Number	Description and Page Number	Part Number	Description and Page Number	Part Number	Description and Page Number
2191	Washer, Lock 2 to 10,12,13,14, 15	116699	Lamp, 1/25 Watt Neon 4	151632	Screw, 6-40 x 3/8 Hex 2,8,12, 15
2263	Nut, 8-32 Hex 10	116793	Washer, Lock 10	151657	Screw, 6-40 x 1/4 Fil 3,10
2322	Washer, Lock 2,5	117366	Jumper, 8-1/2" Green 11	151658	Screw, 6-40 x 5/16 Fil 3
2669	Washer, Lock 2 to 9,12	117406	Spring, Contact 10	151659	Screw, 6-40 x 1/2 Fil 15
3438	Washer, Flat 2,3,14	117535	Washer, Flat 2,3,12	151660	Screw, 6-40 x 7/8 Fil 14
3598	Nut, 6-40 Hex 5,9,10,14	117878	Jumper, 3" Black 11	151690	Screw, 10-32 x 5/16 Fil 8,13
3606	Nut, 6-40 Hex 3	119376	Washer, Flat 10	151692	Screw, 6-40 x 3/16 Fil 7
3639	Washer, Lock 14	119634**	Button, Plug 4	151694	Screw, 6-40 x 11/32 Fil 6,7
3640	Washer, Lock 7	119651	Ring, Retaining 5	151722	Screw, 6-40 x 3/16 Fil 6,7,8,12
3646	Washer, Lock 4	119652	Ring, Retaining 14	151723	Screw, 10-32 x 3/8 Hex 2,4,5, 9,12
5599	Nut, 8-32 Hex 4	119655	Ring, Retaining 15	151724	Screw, 10-32 x 5/8 Hex 14
7002	Washer, Flat 2,3,9,10,12	120175	Plate, ON-OFF 2,3,4	151731	Screw, 4-40 x 7/8 Fil 13
8330	Washer, Flat 8,14	120206	Socket, Lamp 4	151819	Jumper, 3" Black 10,11
34432	Washer, Flat 5,6,7,12,14	120557	Washer, Flat 2,3,10	151827	Strap, Terminal 2,3,13
41732	Plate, Clamp 10	121242	Clamp, 1/8 ID Cable 11	151846	Post, Spring 10
42827	Screw, 3-48 x 1/4 Fil 2	121243	Clamp, 3/16 ID Cable 11	151922	Clamp 13
44048	Washer, Flat 2,3,4,10	121244	Clamp, 1/4 ID Cable 2,9,11,12	151939	Grommet, Rubber 10
45026	Screw, 3-48 Shoulder 2,3,5,12	121245	Clamp, 5/16 ID Cable 9,11	152441	Washer, Flat 14
45815	Washer, Lock 13	121246	Clamp, 3/8 ID Cable 2,9,11	152459	Bracket, Mounting 10
55219	Screw, 8-32 x 3/8 Fil 2,3	121247	Clamp, 7/16 ID Cable 11	152887	Screw, 4-40 x 1/2 Hex 14
61085	Washer, Lock 4	121248	Clamp, 1/2 ID Cable 11,12	152893	Screw, 4-40 x 1/4 Hex 2,3,5,15
70073	Nut, 3-48 Hex 2,3,5,12	121249	Clamp, 5/8 ID Cable 11	153441	Screw, 10-32 x 7/16 Hex 3,6,7
74014	Screw, 10-32 x 3/4 Hex 5,8	121250	Clamp, 3/4 ID Cable 11	153442	Screw, 10-32 x 1/2 Hex 5
74032	Washer, Flat 2,3,5	121251	Clamp, 1 ID Cable 11	153537	Screw, 6-40 x 9/32 Hex 8
74100	Washer, Leather 2,3,4,12	123706	Screw, 10-32 x 1/4 Flat 10	153539	Screw, 6-40 x 11/16 Hex 9
74569	Block, Terminal 10	124396	Switch Assembly 2,3,13	153819	Washer, Lock 2,3,5,9,12
75607	Washer, Flat 5	124850	Screw, 10-32 x 15/32 Fil 5	153939	Jumper, 4" Black 11
80755	Bushing, Insulating 10	125011	Washer, Flat 2,3,5	154689	Jumper, 3" Black 11
80833	Guard, Contact Spring 10	125170	Screw, 8-32 x 5/16 Fil 4	155551	Clamp, Bearing 6,7,15
81726	Terminal 10	125181	Screw, 2-56 x 3/8 Fil 8	155750	Sleeve, 3/32 ID x 1/2" Lg Insulating 11
82547	Insulator, .094" Thk 10	125229	Nut, 6-32 Hex 10	155751	Sleeve, 1/8 ID x 1" Lg Insulating 11
82548	Insulator, .062" Thk 10	125802	Washer, Flat 14	155752	Sleeve, 5/64 ID x 1/2" Lg Insulating 11
83561	Washer, Spring 5	136148	Modification Kit 2,3	155753	Sleeve, 1/8 ID x 1/2" Lg Insulating 5,11
84551	Jumper, 5-1/4" Black 11	139159	Connector, 3 Pt Plug 11	155754	Sleeve, 1/16 ID x 1/2" Lg Insulating 9,11
84705	Spring, Contact 10	142665	Nut, 8-32 Spl 2,3	155755	Sleeve, 11/64 ID x 5/8" Lg Insulating 11
89486	Stiffener 10	145313	Washer, Felt 14	156501	Screw, 6-40 x 7/32 Fil 2,4
89822	Jumper, 3-11/16" Black 11	145368	Gear, 27T 15	156626	Gear, 88T 6
90790	Washer, Flat 14,15	145370	Gear, 42T 15	156627	Pinion, 18T 6
91683	Nut, 15/32-32 Hex 2,3	145373	Gear, 66T 14	156628	Gear, 72T 6
91684	Nut, 15/32-32 Ring 2,3	145375	Gear, 63T 14	156629	Pinion, 24T 6
93135	Screw, 8-32 x 1-3/4 Fil 10	145381	Washer, Thrust 14	156656	Jumper, 2-3/4" Black 11
95063	Connector, 3 Pt Plug 11	145383	Key 14	156658	Gear Set, 60 WPM 6
96883	Terminal 10	145384	Pin, Guide 14	156659	Gear Set, 100 WPM 6
98726	Screw, 3-48 x 1/4 Fil 4	145385	Spring, Compression 14	156725	Pinion, 24T 6
99381	Foot, Rubber 2,3	145386	Sleeve 14	156726	Gear, 94T 6
100832	Screw, #0 x 3/16 Drive 5	146647	Belt, 50T 15	156728	Gear Set, 75 WPM 6
101456	Screw, 6-32 x 9/32 RD 10	150040	Screw, 6-40 x 5/8 Fil 10	156751	Plate, Base 2
102416	Screw, 6-40 Shoulder 14	150646	Screw, 6-40 Shoulder 14	156752	Bar 2,9
102751	Nut, 10-32 Shoulder Hex 10	150652	Screw, 4-40 x 37/64 Fil 10	156753	Bar 2
104124	Screw, 1/4-32 x 11/32 Hex 2,5	150949	Plate, Serial 5	156754	Plate w/Spacers 2,9
104672	Connector, 12 Pt Plug 11	150950	Plate, Code 5	156755	Plate w/Spacers 2
107116	Washer, Lock 10	151152	Screw, 4-40 x 3/16 Hex 7	156756	Guard 2
107393	Switch, SP-ST Toggle 5	151245	Washer, Felt 14	156757	Bracket, Switch 2,3
110435	Nut, 4-40 Hex 14	151335	Stud 2,3,5	156758	Bracket 2,3,5
110743	Washer, Lock 2,3,10,13,14,15	151346	Screw, 6-40 x 3/8 Fil 8,10,14	156764	Stud 2,3,5
111017	Screw, 6-40 x 5/16 Fil 2,3,5,13	151411	Block, Terminal 2,3,5,13	156805	Retainer 6
111516	Washer, Flat 5	151412	Insulator, Terminal Block 2,3,5,13	156806	Post 6
112080	Washer, Flat 3	151414	Switch, Sensitive 3,5,11	156807	Disk 6
112626	Nut, 10-32 Hex 2,3,5	151416	Nut, 6-40 Terminal 2,3,5,13	156808	Disk 6
113203	Cord 11	151442	Screw, 6-40 x 1/2 Hex 5		
114466	Connector, 3 Pt Receptacle 2,4	151606	Screw, 10-32 x 1/4 Hex 3,5		
114467	Connector, 3 Pt Plug 2,4	151610	Washer, Flat 8,14,15		
114478	Nut, 15/32-32 Hex 2	151618	Screw, 6-40 x 7/16 Fil 8		
115299	Block, Terminal 10	151630	Screw, 6-40 x 1/4 Hex 2,3,4,5, 8,10,12,13		
116499	Switch, Toggle 2,4		Screw, 6-40 x 5/16 Hex 6,7,8, 13,14,15		
116669	Lens, Red 4	151631	Screw, 6-40 x 5/16 Hex 6,7,8, 13,14,15		

\*\*Refer to page 1 for finish suffix



## NUMERICAL INDEX (Continued)

Part Number	Description and Page Number	Part Number	Description and Page Number	Part Number	Description and Page Number
156819	Shaft, Bearing 6,7	165083	Keeper, Clamp 3	195263	Gear, 22T 15
156821	Housing, Bearing 6	170863	Mount, Vibration 3	195264	Gear, 49T 14
157195	Stud 13	173098	Gear Set, 60 WPM 7	195429	Pinion, 20T 6
157215	Mount, Vibration 2,3,5	173099	Gear, 110T 7	195430	Gear, 72T 6
158745	Clamp, Bearing 15	173100	Pinion, 45T 7	195442	Modification Kit 1,13,14,15
158788	Clamp, Bearing 6	173101	Gear Set, 75 WPM 7	195443	Modification Kit 1,13,14,15
158807	Screw, 3-48 x 11/64 Fil 9	173102	Gear, 94T 7	195445	Bracket, Switch 13
159341	Bearing, Ball 8,14,15	173103	Pinion, 48T 7	195446	Block 13
161238	Connector, 36 Pt Receptacle 4, 9,11	173104	Gear Set, 100 WPM 7	195447	Pulley, 18T 15
161239	Connector, 36 Pt Plug 2,9,11	173105	Gear, 84T 7	195448	Belt, 55T 15
161246	Pinion, 20T 6,7,15	173106	Pinion, 56T 7	195449	Gear, 24T 15
161351	Gear, 49T 6	173159	Pinion, 32T 6	195450	Pulley, 20T 15
161352	Pinion, 11T 6	173160	Gear, 80T 6	195451	Shaft w/Gear & Bearing 15
161353	Gear, 63T 6	173162	Bracket 4	195452	Bracket 14
161354	Pinion, 15T 6	173397	Plate, Base 4	195453	Lever 14
161358	Gear Set, 67 WPM 6	173427	Gear Set, 120 WPM 6	195454	Arm, Idler 14
161359	Gear Set, 71 WPM 6	173595	Gear Set, 107 WPM 6	195456	Bracket w/Bearing 14,15
161520	Belt, 64T 8	172596	Gear, 84T 6	195457	Shaft 14
161548	Bracket, Switch 5	173597	Pinion, 30T 6	195458	Shaft w/Bearing 15
161595	Connector, 36 Pt Receptacle 2, 3,5,11	173598	Gear Set, 65 WPM 6	195459	Gear, 48T 15
162072	Capacitor, 88 to 108 MFD 13	173599	Gear, 120T 6	195460	Shaft w/Bearings 15
162199	Latch 3	173600	Pinion, 26T 6	195462	Bracket 13
162201	Guard 3	173974	Screw, 10-32 x 5/16 Hex 2,3,9	196900	Gear, 50T 14
162202	Bar 3	173996	Connector, 3 Pt Plug 11	196902	Eccentric 14
162203	Bar 3	174173	Cable Assembly 11	196903	Guard, Gear 14
162204	Plate 3	174233	Plug, Red 11	197616	Pinion, 31T 6
162205	Plate 3,13	174250	Pin, Roll 15	197617	Gear, 92T 6
162206	Plate, Base 3	174346	Gear Set, 67 WPM 7	197618	Gear Set 6
162215	Hub 5	174347	Pinion, 44T 7	197695	Gear, 78T 6
162291	Bracket, Connector Mounting 2,3	174348	Gear, 98T 7	197696	Pinion, 21T 6
162463	Modification Kit 2	174365**	Modification Kit 1,10	197697	Gear Set, 67 WPM 6
163317	Modification Kit 1,9	174366**	Base 10	198083	Shaft w/Bearing 8
163318	Plate Connector 9	174367	Plate, Base 10	198084	Shaft w/Bearing 7,8
163702	Pan w/Brackets 5	174368	Contact Assembly 10	198088	Modification Kit 8
163704	Base 5	174369	Bracket 10	198090	Modification Kit 8
163705	Bracket, Connector 5	174370	Arm 10	198091	Bearing, Ball 14
163707	Post 5	174371	Collar 10	199132	Post 12
163708	Clamp 5	174372	Strip 10	199135	Pan, Oil 12
163709	Bushing, Eccentric 5	174374	Diode 10	199156	Bar 12
163710	Plate, Adjusting 5	174375	Resistor, 150 Ohm 10	199157	Bar 12
163711	Plate, Mounting 5	174376	Resistor, 300 Ohm 10	199158	Bracket, Connector Mounting 12
163712	Eccentric 5	174377	Resistor, 1000 Ohm 10	305528	Pinion, 26T 6
163713	Plate 5	174378	Block Assembly, Terminal 10	305529	Pinion, 28T 6
163716	Pulley, 14T 6	176152	Gear Set, 67 WPM 6	305530	Pinion, 40T 6
163722	Bar, Mounting Plate 8	176153	Gear, 98T 6	305531	Gear, 106T 6
163723	Clamp 8	176154	Pinion, 22T 6	305532	Gear, 104T 6
163724	Plate 8	176417	Ring, Retaining 8	305533	Gear, 100T 6
163725	Gear, 40T 8	179168	Base 10	305534	Gear Set, 60 WPM 6
163728	Plate, Bearing Mounting 8	179284**	Modification Kit 1,10	305535	Gear Set, 67 WPM 6
163729	Clamp, Bearing 8	192784	Pinion, 25T 6	305536	Gear Set, 100 WPM 6
163730	Hub 8	192785	Gear, 112T 6	305763	Post 12
163731	Pulley, 28T 8	192786	Pinion, 20T 6	308177	Pinion, 20T 6
163733	Pulley, 16T 7	192787	Gear, 112T 6	308178	Gear, 102T 6
163736	Housing, Bearing 7	193622	Gear Set, 66 WPM 6	308179	Gear Set 6
163737	Clamp, Bearing 7,15	193665	Gear Set, 53 WPM 6	308180	Pinion, 24T 6
163741	Plate, Bearing Mounting 8	194339	Modification Kit 1,9	308181	Gear, 102T 6
163743	Pulley, 32T 8	194348	Gear Set, 100 WPM 6	308182	Gear Set 6
163744	Belt, 85T 8	194349	Pinion, 52T 6	308183	Pinion, 24T 6
163757	Cable Assembly 5	194350	Gear, 104T 6	308184	Gear, 112T 6
164119	Plate, Teletype Identification 5	194351	Gear, 56T 6	308185	Gear Set 6
164684	Bracket 5	194352	Pinion, 17T 6	308186	Pinion, 19T 6
164685	Bracket 5	194353	Gear Set, 60 WPM 6	308187	Gear, 71T 6
164906	Cable Assembly 11	194355	Pinion, 15T 6	308188	Gear Set 6
164965	Washer, Flat 14	194879	Plate 3	320410	Terminal, Spade Type 10,11
165082	Clamp, Cable 3	194941	Plate, Cover 2,4	320418	Terminal, Ring Type 5,11
		195012	Bracket 2	320420	Terminal, Ring Type 11
		195013	Plate 2	323832	Gear Set, 71 WPM 6

\*\*Refer to page 1 for finish suffix

## NUMERICAL INDEX (Continued)

Part Number	Description and Page Number	Part Number	Description and Page Number	Part Number	Description and Page Number
323839	Gear Set, 65 WPM 6	327339	Gear, 26T 6	327447	Insulator 4
323840	Gear Set, 107 WPM 6	327340	Gear, 91T 6	328367	Pinion, 35T 6
327337	Pinion, 26T 6	327341	Pinion, 36T 6	328368	Gear, 77T 6
327338	Gear, 100T 6	327342	Gear, 84T 6		