

28 TRANSMITTER DISTRIBUTOR  
(LAXD - Pivoted Head, Multi-contact)

PARTS

FIGURE	CONTENTS	PAGE
1	176264 (Automatic Send-Receive Set) and 176265 (Reperforator Transmitter Set) Modification Kits to Provide Snap-on Cover	2
2	159125 and 173497 Yoke Assemblies and Last Character Contact Pile-Up	3
3	Rear Plate and Reservoir Mounting Bar	4
4	Bails	5
5	Eccentric Shafts	6
6	Front Plate and Main Casting	7
7	159142 and 164364 Sensing Shaft Assemblies - 1 Cycle	8
8	159162 Sensing Shaft Assembly - 2 Cycle	9
9	159848, 159878, 163483, 172792 and 173701 Distributor Shaft Assemblies - 1 Cycle	10
10	159161 Distributor Shaft Assembly - 2 Cycle	11
11	Distributor Contact Block	12
12	159127 Storing Switch	13
13	172793 Storing Switch Assembly With Transfer Type Code Reading Contacts	14
14	159120 Clutch Trip Assembly	15
15	179129 (With Chute) and 179228 (Less Chute) Modification Kits to Provide Fully Enclosed Last Character Contact Assemblies	16
16	Cable Components	17
	Numerical Index	18

**NOTE:** When ordering parts from this section,  
prefix each number with the letters TP.

The part identification information contained in the following change notices has been incorporated in this issue.	
TCN	#663

Transmitter	Distributor
Teletype Code	Bell System Code
LAXD3	28C

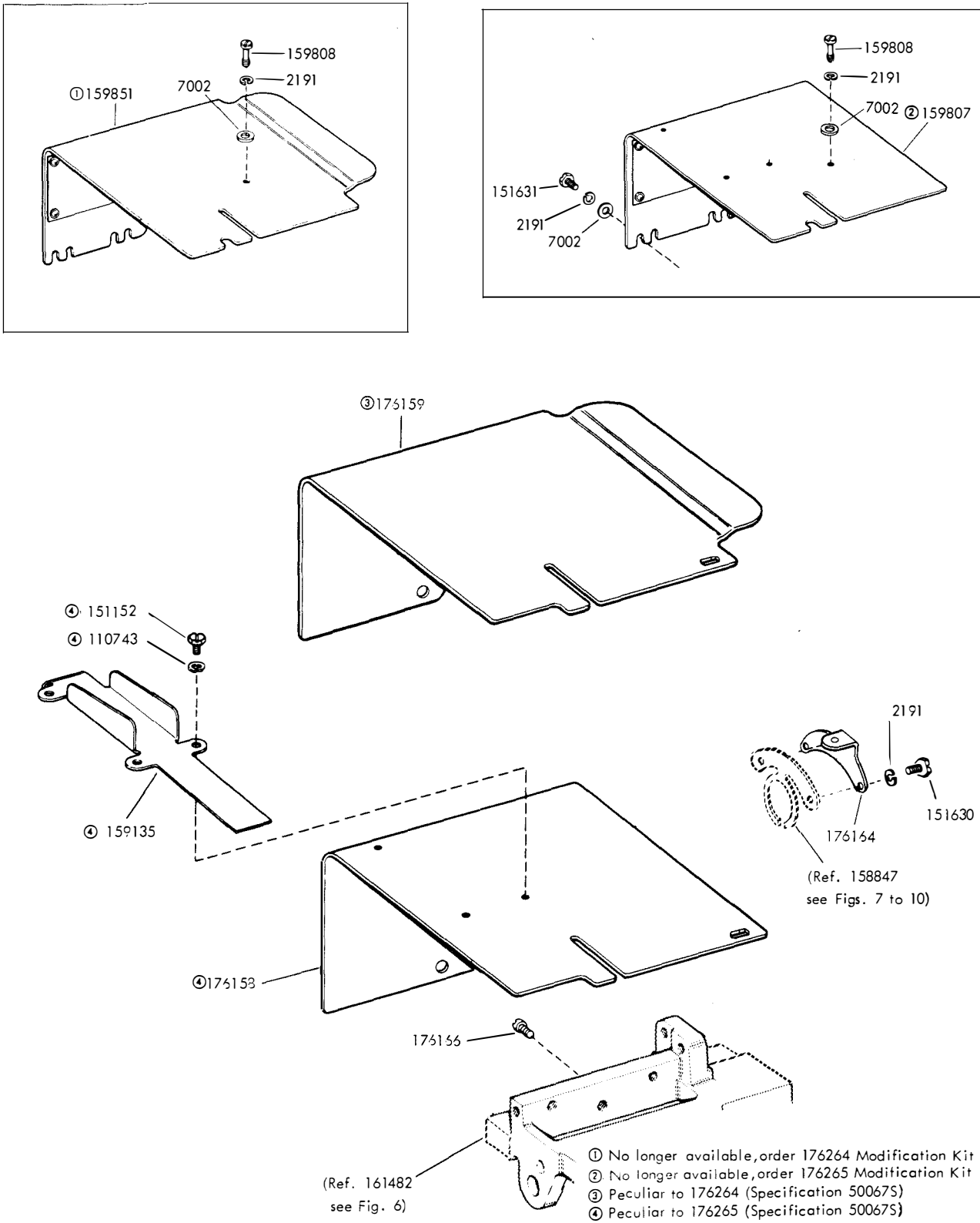
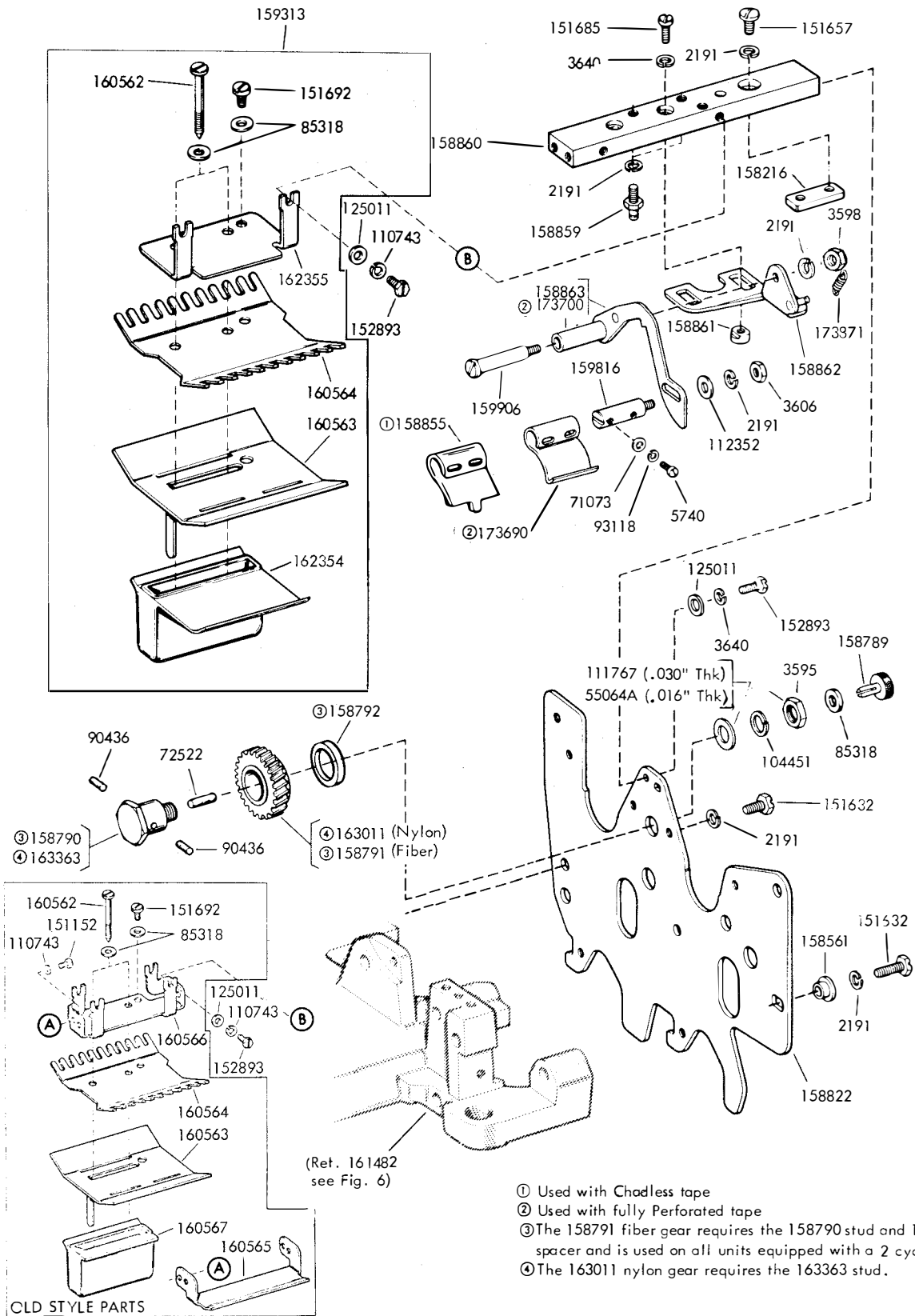


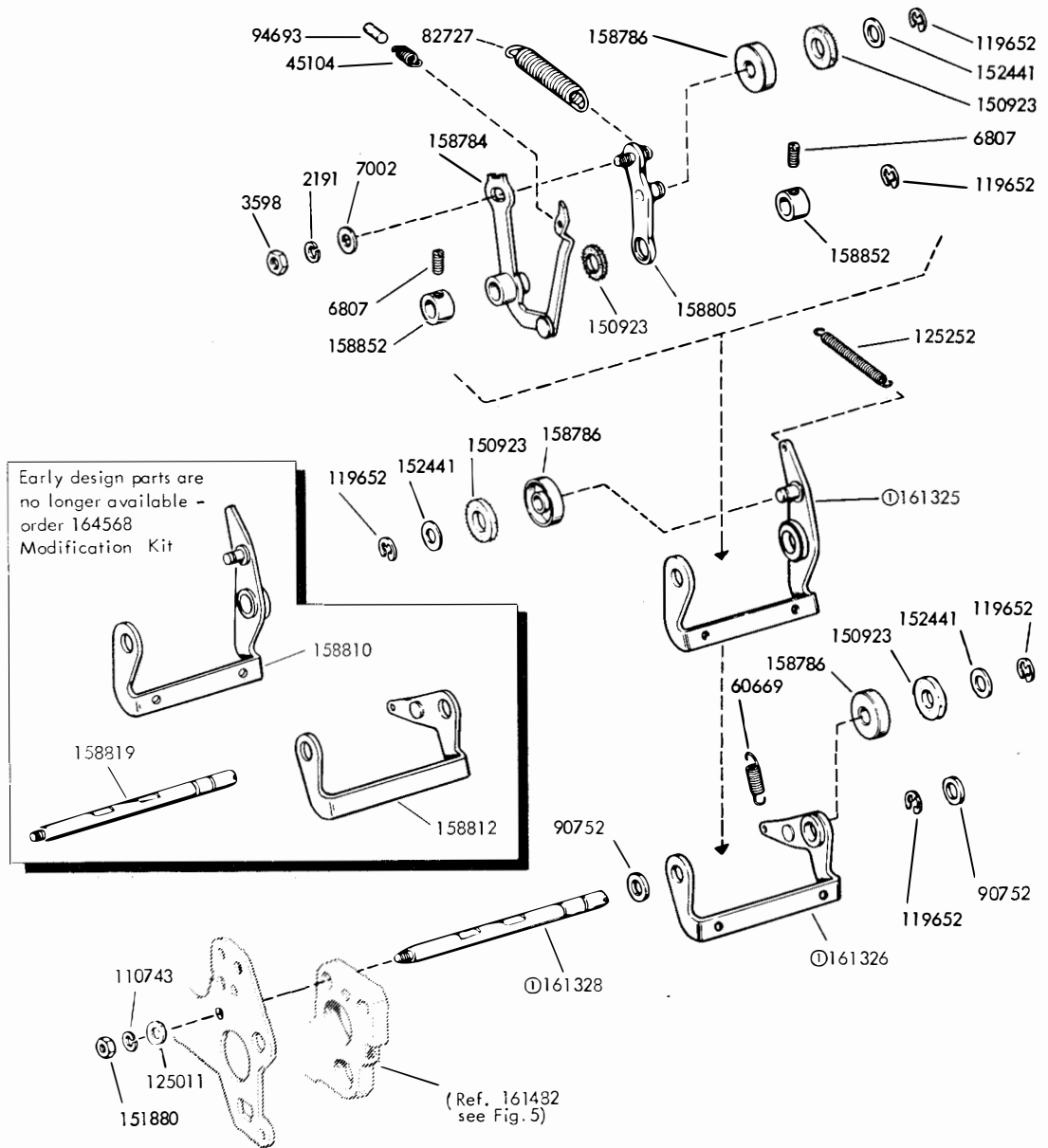
FIGURE 1. 176264 (AUTOMATIC SEND-RECEIVE SET) AND 176265 (REPERFORATOR TRANSMITTER SET) MODIFICATION KITS TO PROVIDE SNAP-ON COVER





- ① Used with Chadless tape
- ② Used with fully Perforated tape
- ③ The 158791 fiber gear requires the 158790 stud and 158792 spacer and is used on all units equipped with a 2 cycle clutch.
- ④ The 163011 nylon gear requires the 163363 stud.

FIGURE 3. REAR PLATE AND RESERVOIR MOUNTING BAR

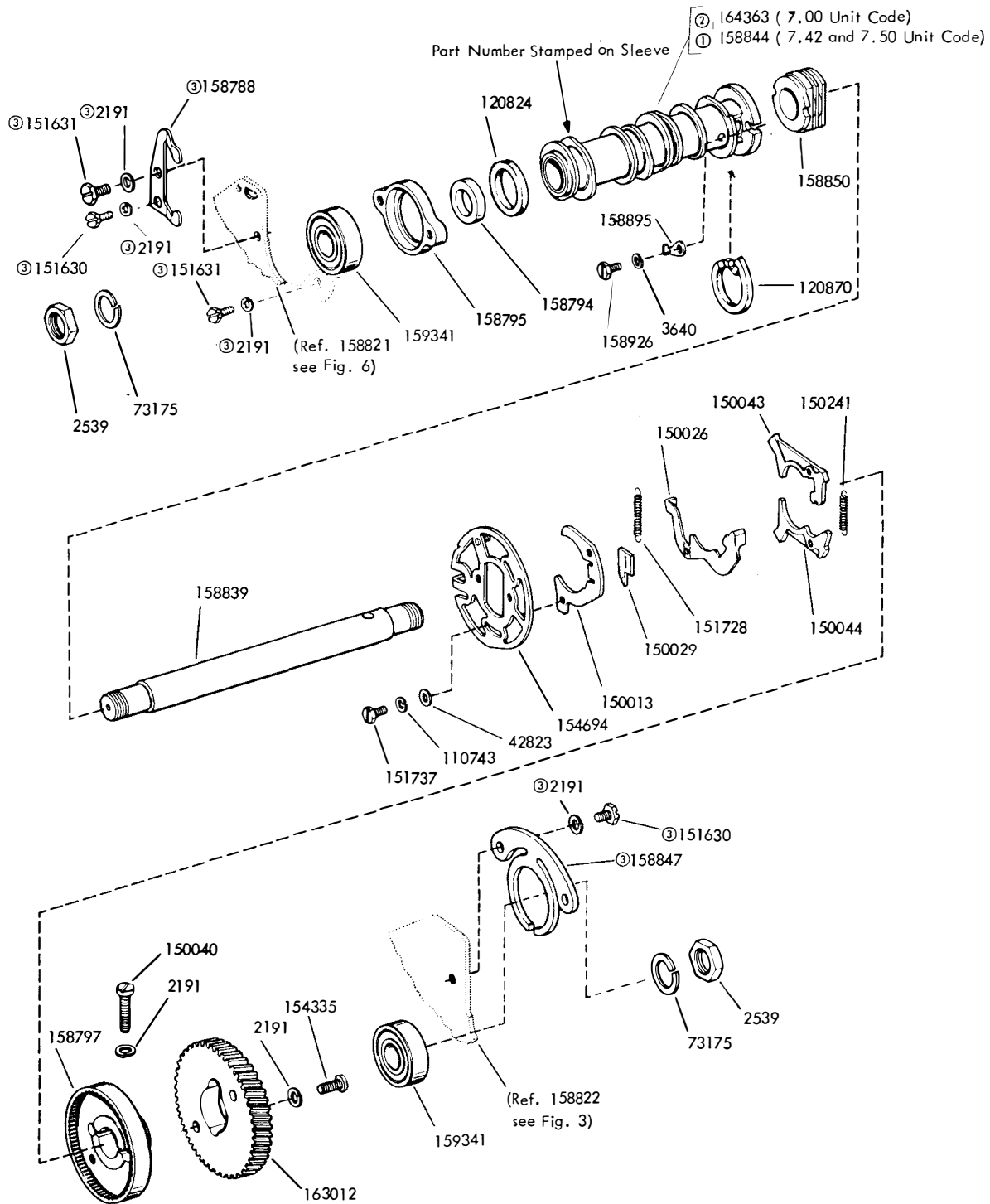


Ⓞ 164568 Modification Kit to provide replacement for Latch Bail, Pusher Bail and shaft

FIGURE 4. BAILS



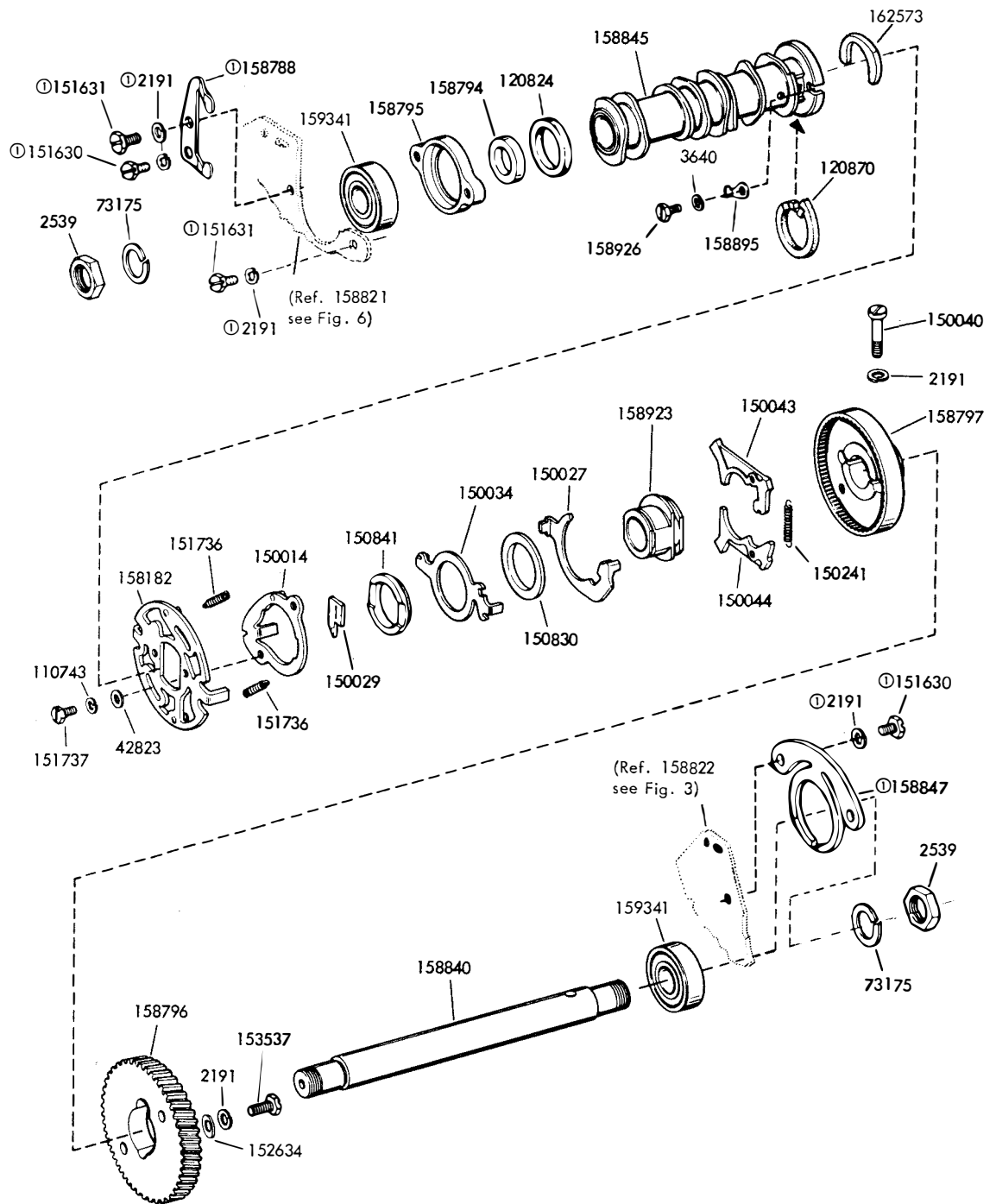




- ① Peculiar to 159142
- ② Peculiar to 164364
- ③ Not part of Shaft Assembly

FIGURE 7. 159142 AND 164364 SENSING SHAFT ASSEMBLY-1 CYCLE





⓪ Not part of 159162

FIGURE 8. 159162 SENSING SHAFT ASSEMBLY - 2 CYCLE

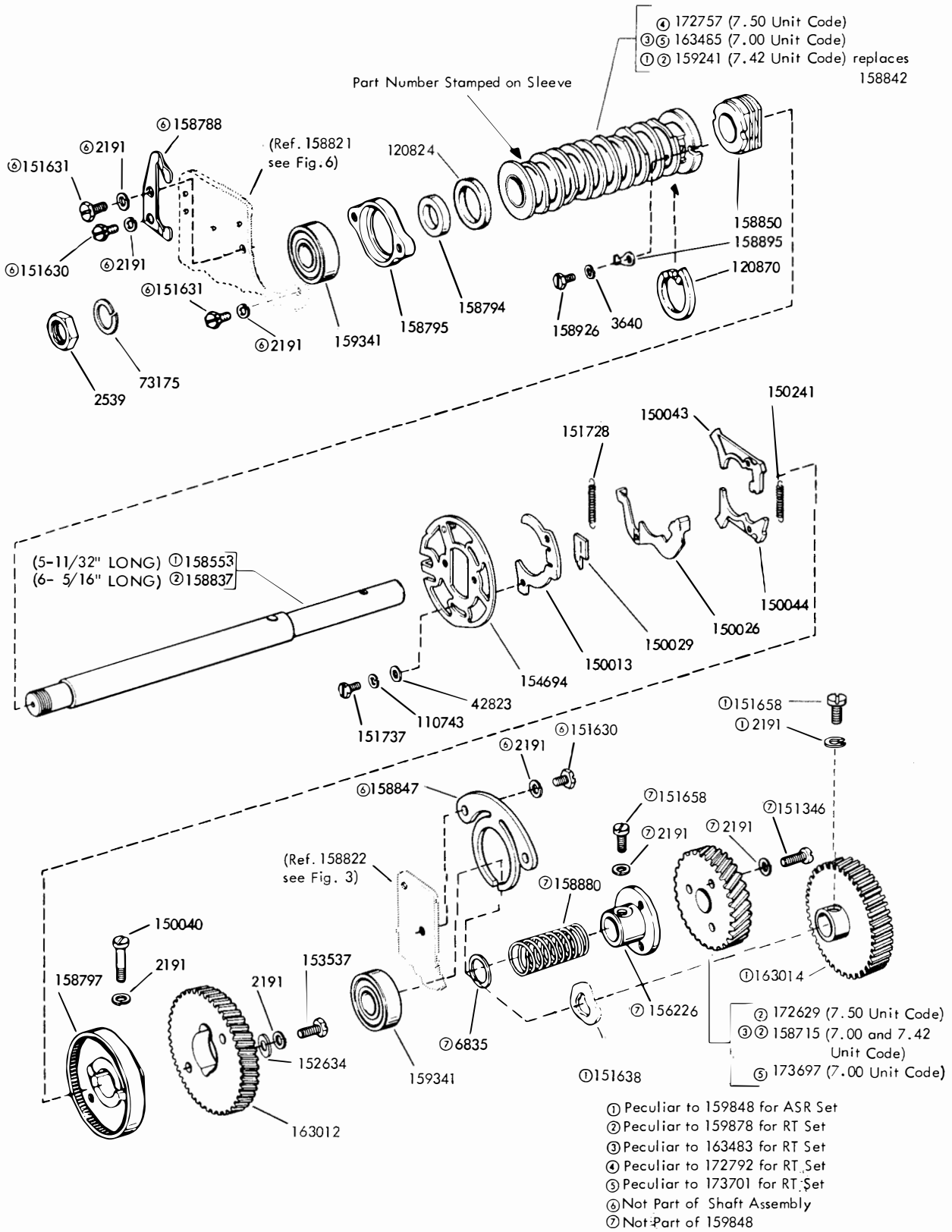
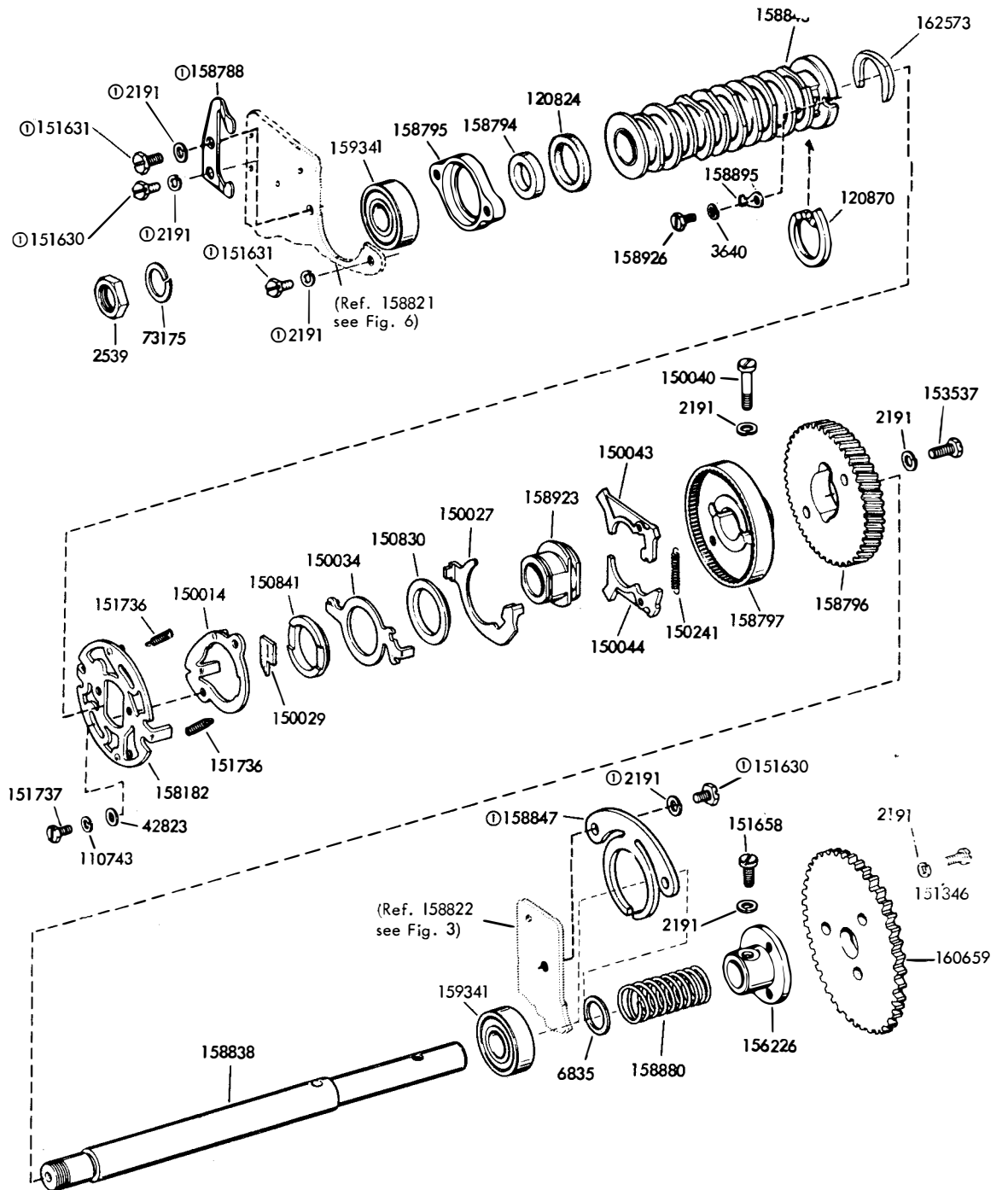


FIGURE 9. 159848, 159878, 163483, 172792 and 173701 DISTRIBUTOR SHAFT ASSEMBLIES - 1 CYCLE



Ⓢ Not part of 159161

FIGURE 10. 159161 DISTRIBUTOR SHAFT ASSEMBLY - 2 CYCLE

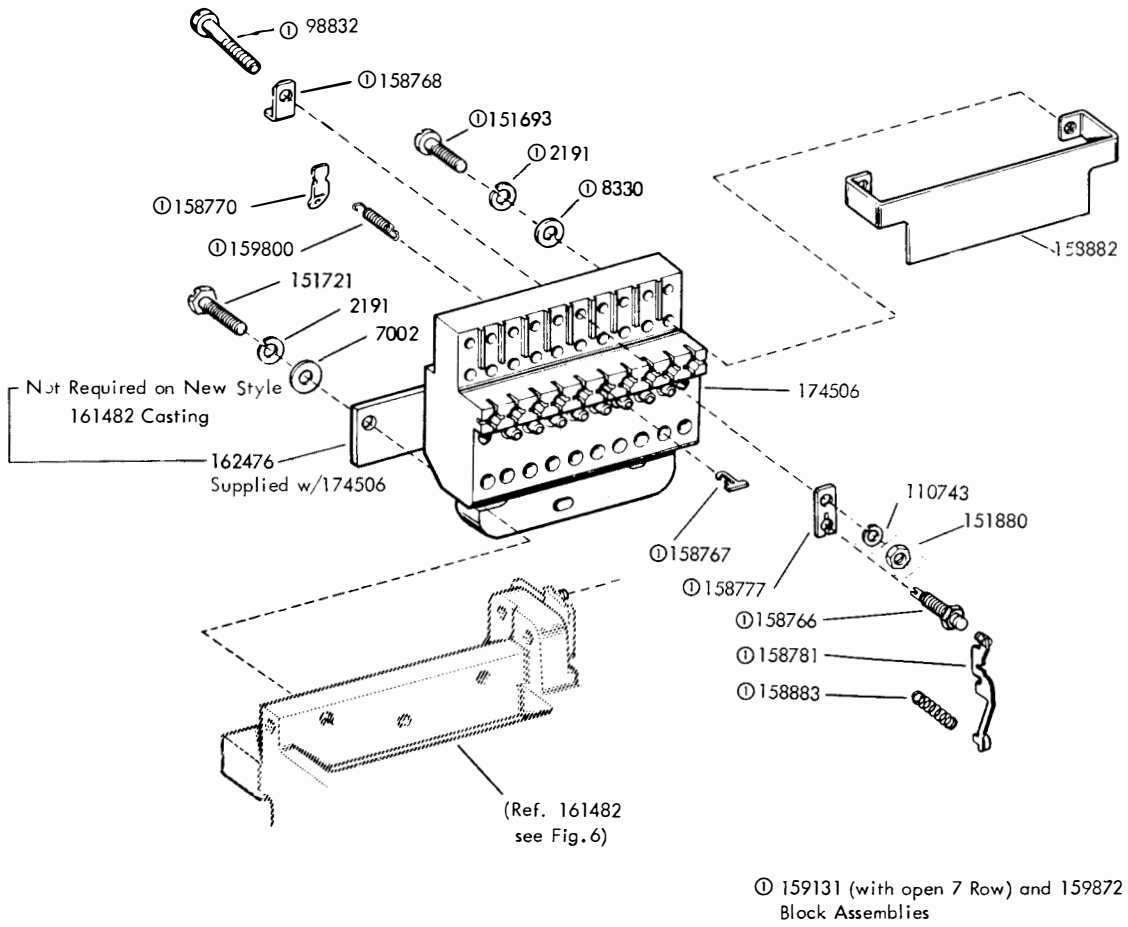


FIGURE 11. DISTRIBUTOR CONTACT BLOCK

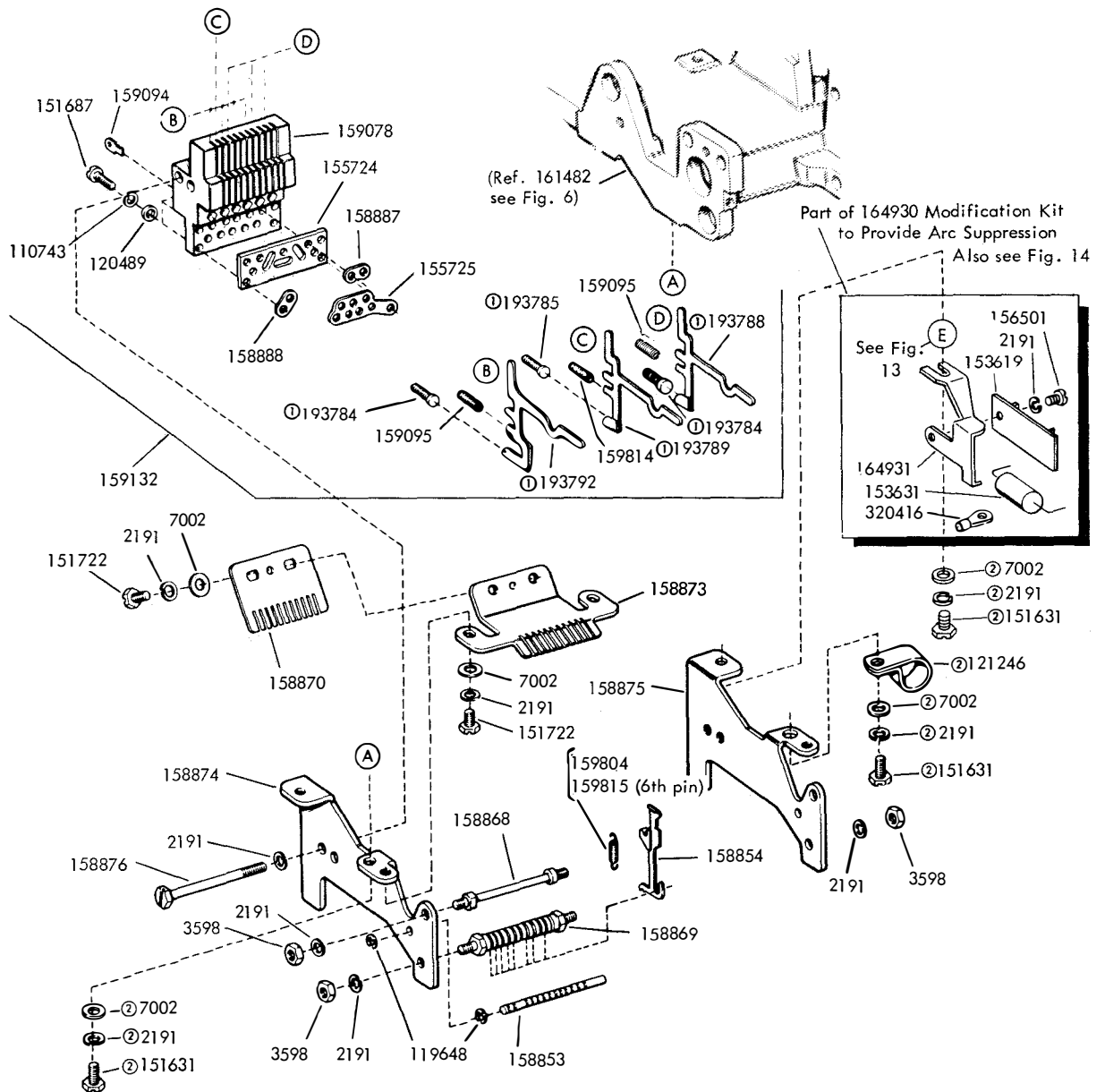


FIGURE 12. 159127 STORING SWITCH

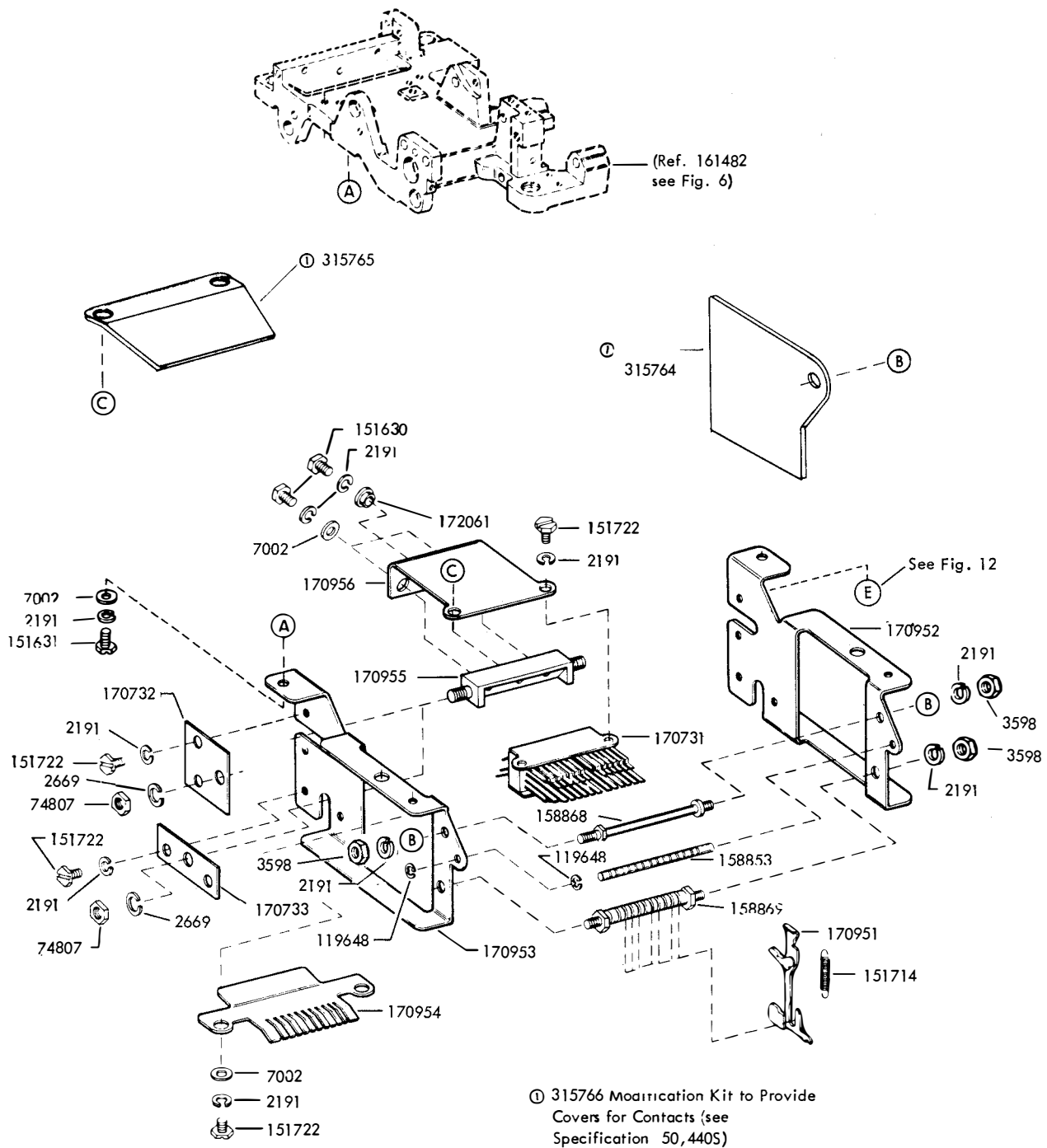
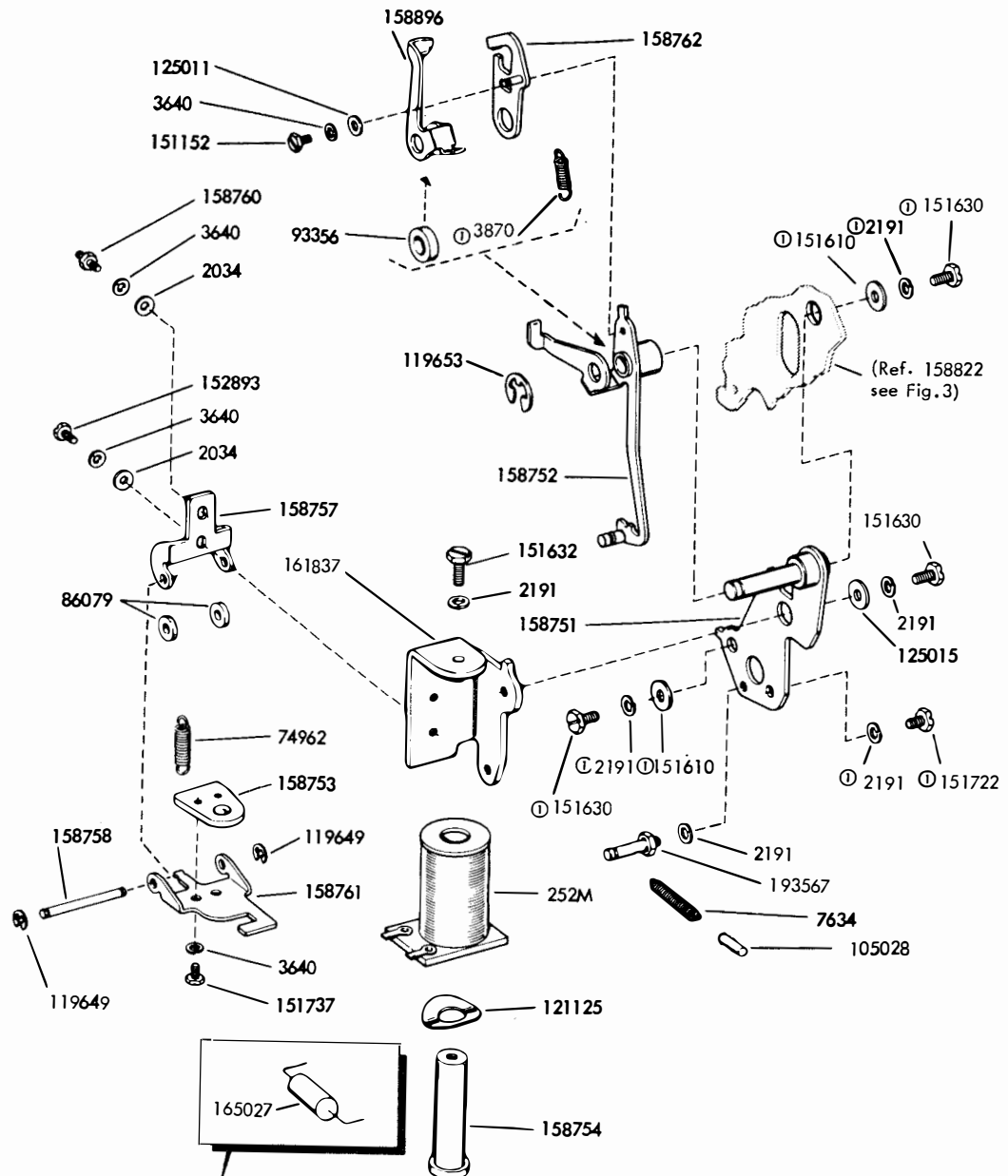


FIGURE 13 172793 STORING SWITCH ASSEMBLY WITH TRANSFER CODE READING CONTACTS

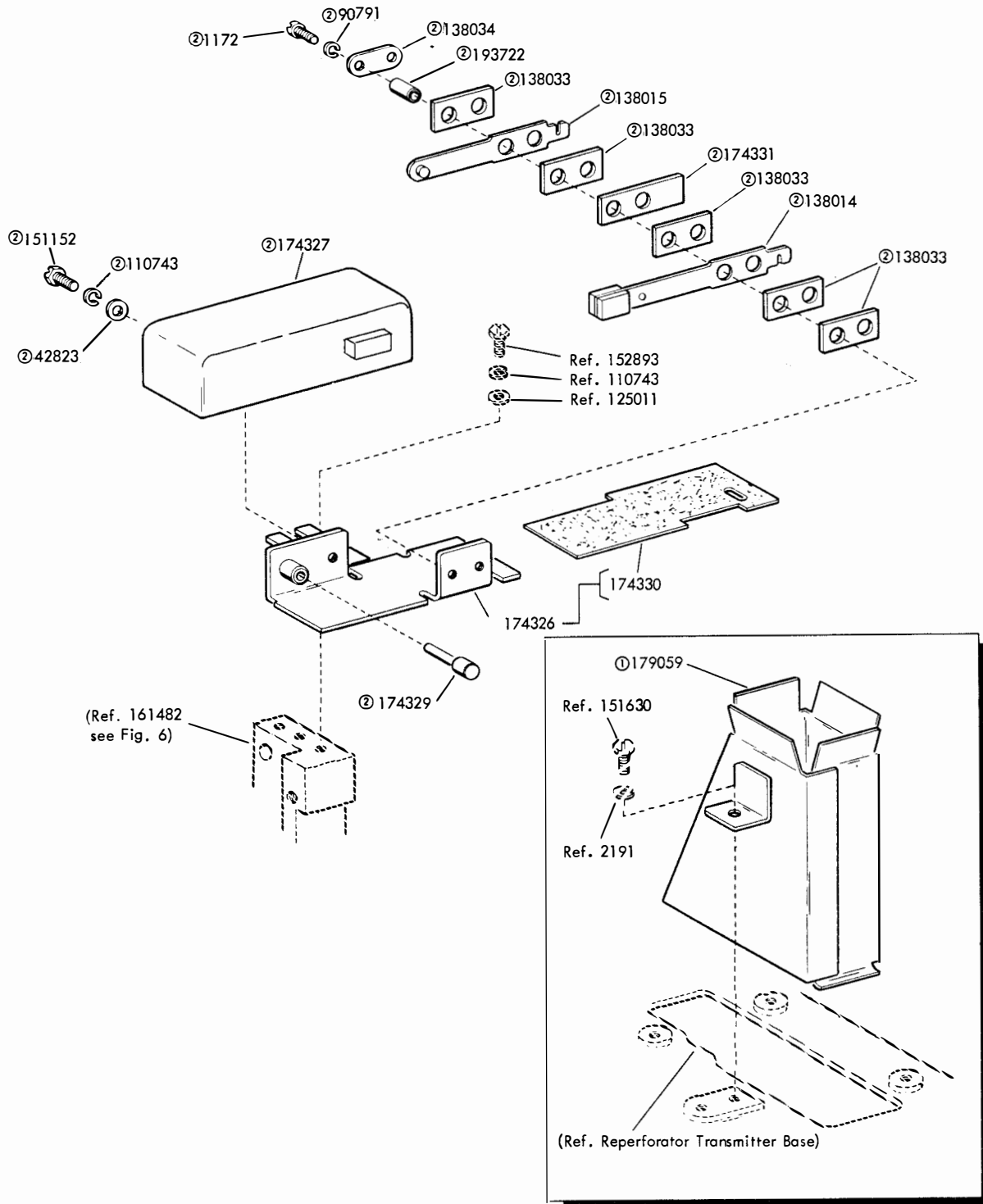


Part of 164930 Modification Kit to provide Arc Suppression. See Figure 12 for additional parts.

Note: These Parts are common to both Sensing and Distributor Clutch Trip Mechanisms

⓪ Not Part of 159120

FIGURE 14. 159120 CLUTCH TRIP ASSEMBLY



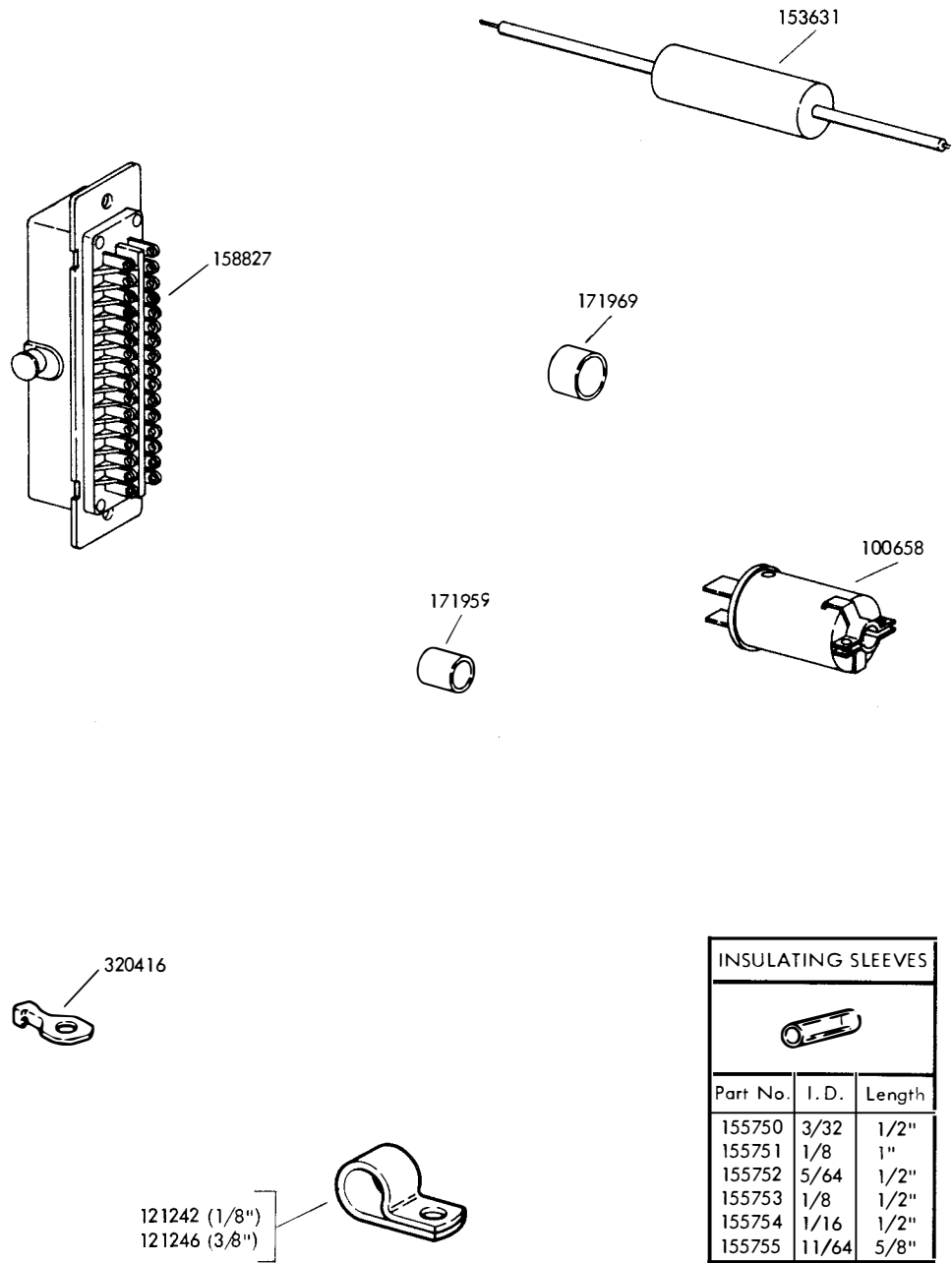
Specification 500955

① Peculiar to 179129

② 174334 Contact Assembly

FIGURE 15. 179129(WITH CHUTE)AND 179228(LESS CHUTE) MODIFICATION KITS TO PROVIDE FULLY ENCLOSED LAST CHARACTER CONTACT ASSEMBLIES





INSULATING SLEEVES		
Part No.	I. D.	Length
155750	3/32	1/2"
155751	1/8	1"
155752	5/64	1/2"
155753	1/8	1/2"
155754	1/16	1/2"
155755	11/64	5/8"

FIGURE 16. CABLE COMPONENTS

## NUMERICAL INDEX

Part Number	Description and Page Number	Part Number	Description and Page Number	Part Number	Description and Page Number
252M	Coil, Magnet 15	90791	Lockwasher 16	150044	Shoe, Primary Clutch 8, 9,10,11
1172	Screw, 2-56 x 5/16 Fil 16	92265	Screw, 2-56 x 1/8 Rd 7	150048	Spring 6
2034	Washer, Flat 6,15	93118	Lockwasher 4	150241	Spring 8,9,10,11
2191	Lockwasher 2,4,5,6,7,8, 9,10,11,12,13,14,15,16	93356	Washer, Felt 15	150507	Spring 6
2539	Nut, 3/8-32 Hex 8,9, 10,11	94693	Wick, Felt 5	150830	Bushing, Shoulder 9,11
2669	Lockwasher 6,7,14	98832	Screw, 4-40 x 11/16 Fil 12	150841	Bearing 9,11
3595	Nut, 1/4-32 Hex 4	100658	Connector, 2 Pt Plug 17	150923	Washer, Felt 5,6
3598	Nut, 6-40 Hex 4,5,6,7, 13,14	104451	Lockwasher 4	151103	Spring 6
3599	Nut, 4-40 Hex 7	105028	Wick, Felt 15	151152	Screw, 4-40 x 3/16 Hex 2,4,6,15,16
3606	Nut, 6-40 Hex 4	110435	Nut, 4-40 Hex 3	151346	Screw, 6-40 x 3/8 Fil 10,11
3640	Lockwasher 3,4,6,7,8,9, 10,11,15	110743	Lockwasher 2,3,4,5,6,8, 9,10,11,12,13,16	151397	Spring 6
3870	Spring 15	111767	Washer, Flat 4	151610	Washer, Flat 15
5740	Screw, 2-56 x 1/4 Fil 4	112352	Washer, Flat 4	151630	Screw, 6-40 x 1/4 Hex 2,8,9,10,11,14,15,16
6807	Setscrew, 6-40 5	112626	Nut, 10-32 Hex 6,7	151631	Screw, 6-40 x 5/16 Hex 2,7,8,9,10,11,13,14
6835	Washer, Flat 10,11	119648	Ring, Retaining 3,7,13, 14	151632	Screw, 6-40 x 3/8 Hex 4,7,15
6970	Nut, 3/8-32 Hex 7	119649	Ring, Retaining 3,15	151638	Washer, Spring 10
7002	Washer, Flat 2,5,7,12, 13,14	119652	Ring, Retaining 5,6	151657	Screw, 6-40 x 1/4 Fil 4
7634	Spring 15	119653	Ring, Retaining 15	151658	Screw, 6-40 x 5/16 Fil 10,11
8330	Washer, Flat 12	120489	Spacer, .052" Thk 13	151685	Screw, 4-40 x 5/16 Fil 4
34432	Washer, Flat 6	120824	Washer, Felt 8,9,10,11	151687	Screw, 4-40 x 7/16 Fil 13
41732	Plate, Clamp 3	120870	Wick, Felt 8,9,10,11	151689	Screw, 4-40 x 3/4 Fil 3
41733	Insulator, .062" Thk 3	121125	Washer, Spring 15	151692	Screw, 6-40 x 3/16 Fil 4
42823	Washer, Flat 8,9,10, 11,16	121242	Clamp, 1/8 ID Cable 17	151693	Screw, 6-40 x 9/16 Fil 12
45104	Spring 5	121246	Clamp, 3/8 ID Cable 13,17	151714	Spring 14
55064A	Washer, Flat 4	125011	Washer, Flat 3,4,5,6, 15,16	151721	Screw, 6-40 x 3/4 Hex 12
60669	Spring 5	125015	Washer, Flat 15	151722	Screw, 6-40 x 3/16 Hex 13,14,15
70073	Nut, 3-48 Hex 3	125252	Spring 5	151728	Spring 8,10
71073	Washer, Flat 4	125802	Washer, Flat 3	151736	Spring 9,11
72522	Wick, Felt 4	138014	Spring, Contact 16	151737	Screw, 4-40 x 11/64 Hex 6,8,9,10,11,15
73175	Lockwasher 8,9,10,11	138015	Spring, Contact 16	151880	Nut, 4-40 Hex 3,5,12
74807	Nut, 10-32 Shoulder Hex 14	138033	Insulator, .031" Thk 16	152441	Washer, Flat 5,6
74962	Spring 15	138034	Plate, Clamp 16	152634	Washer, Flat 9,10
76474	Nut, 10-32 Hex 7	150013	Disc, Adjusting 8,10	152893	Screw, 4-40 x 1/4 Hex 3, 4,6,15,16
77039	Bushing, Insulating 3	150014	Disc, Adjusting 9,11	153267	Washer, Felt 3
81726	Terminal 3	150026	Lever, Shoe Release 8,10	153537	Screw, 6-40 x 9/32 Hex 9,10,11
82727	Spring 5	150027	Lever, Shoe Release 9,11	153619	Board, Terminal 13
82999	Spring 3	150029	Wick, Felt 8,9,10,11		
84575	Spring 6,7	150034	Disc, 2 Stop Clutch 9,11		
85318	Washer, Leather 4	150040	Screw, 6-40 x 5/8 Fil 8,9,10,11		
86079	Washer, Felt 15	150043	Shoe, Secondary Clutch 8,9,10,11		
90436	Wick, Felt 4				
90752	Washer, Felt 5				

## NUMERICAL INDEX (Continued)

Part Number	Description and Page Number	Part Number	Description and Page Number	Part Number	Description and Page Number
153631	Network, Spark Suppression 13,17	158781	Rocker, Contact 12	158845	Sleeve 9
153819	Lockwasher 3	158784	Lever, Feed 5	158846	Post, Spring 6
154335	Screw, 6-40 x 9/32 Fil 8	158786	Roller 5,6	158847	Clamp, Bearing 2,8,9,10,11
154694	Disc, Clutch Cam 8,10	158788	Clamp, Bearing 8,9,10,11	158848	Lever, Push 6
155724	Strip, Insulating 13	158789	Plug, Oil Retainer 4	158849	Lever, Push 6
155725	Plate 13	158790	Stud 4	158850	Bearing, Sleeve 8,10
155750	Sleeve, 3/32 ID x 1/2" Lg Insulating 17	158791	Gear, 23T 4	158852	Collar, Set 5
155751	Sleeve, 1/8 ID x 1" Lg Insulating 17	158792	Spacer, .083" Thk 4	158853	Post, Spring 13,14
155752	Sleeve, 5/64 ID x 1/2" Lg Insulating 17	158794	Spacer, .109" Thk 8,9,10,11	158854	Slide 13
155753	Sleeve, 1/8 ID x 1/2" Lg Insulating 17	158795	Plate 8,9,10,11	158855	Extension 4
155754	Sleeve, 1/16 ID x 1/2" Lg Insulating 17	158796	Gear, 46T 9,11	158859	Post, Spring 4,7
155755	Sleeve, 11/64 ID x 5/8" Lg Insulating 17	158797	Drum, Clutch 8,9,10,11	158860	Bar 4
156226	Hub 10,11	158798	Pin, Sensing 6	158861	Nut, 4-40 Spl 4
156501	Screw, 6-40 x 7/32 Fil 13	158799	Pin, Tape Out 6	158862	Bracket, Depressor 4
156887	Screw, 10-32 x 9/16 Hex 7	158800	Screw, 10-32 Pivot 7	158863	Depressor, Tape 4
158182	Disc, Clutch Cam 9,11	158801	Screw, 10-32 Pivot 7	158868	Post, Stop 13,14
158216	Plate, Nut 4	158805	Lever 5	158869	Shaft, Eccentric 13,14
158553	Shaft 10	158807	Screw, 3-48 x 11/64 Fil 3	158870	Guide 13
158556	Bracket, Spring 6	158810	Bail, Latch 5	158873	Guide 13
158561	Bushing 4	158812	Bail, Pusher 5	158874	Plate, Front 13
158581	Bushing 7	158813	Cover, Contact 3	158875	Plate, Rear 13
158715	Gear, 32T 10	158815	Spring, Contact 3	158876	Screw, 6-40 x 1-5/8 Hex 13
158751	Plate, Clutch Trip 15	158816	Spring, Contact 3	158880	Spring, Compression 10,11
158752	Lever, Trip 15	158817	Stiffener 3	158882	Bracket 12
158753	Armature, Magnet 15	158818	Bracket 3	158883	Spring, Compression 12
158754	Core, Magnet 15	158819	Shaft, Pivot 5	158887	Plate 13
158757	Hinge, Mounting 15	158821	Plate, Front 6,7,8,9,10,11	158888	Plate 13
158758	Shaft 15	158822	Plate, Rear 4,7,8,9,10,11,15	158893	Post, Spring 7
158760	Post, Spring 15	158823	Wheel, Feed 3	158894	Post, Stop 7
158761	Bail, Armature 15	158827	Connector, 32 Pt Receptacle 17	158895	Clip 8,9,10,11
158762	Lever, Trip 15	158828	Bushing, Mounting 7	158896	Latchlever 15
158766	Screw, 6-40 Contact 12	158829	Shaft, Eccentric 6	158907	Spring 6
158767	Guide, Lever 12	158830	Guide 6	158923	Bearing, Sleeve 9,11
158768	Terminal 12	158831	Bail, Sensing 6	158926	Screw, 4-40 x 7/32 Hex 8,9,10,11
158770	Terminal, Spring Holder 7,12	158832	Shaft, Eccentric 6	159078	Block, Contact 13
158771	Shaft 7	158833	Lever, Auxiliary 6	159094	Plate 13
158777	Holder, Screw 12	158834	Latchlever 6	159095	Spring 13
158778	Post, Spring 7	158837	Shaft, 6-5/16" Lg 10	159120	Trip Assembly, Clutch 1,15
158779	Lever, Cam Follower 7	158838	Shaft, 2 Stop Distributor 11	159125	Yoke Assembly 1,3
158780	Guide 7,12	158839	Shaft, 1 Stop Sensing 8	159127	Switch Assembly, Storing 1,13
		158840	Shaft, 4-13/16 Lg 9	159131	Block Assembly 12
		158842	Camsleeve 10	159132	Block Assembly, Storing 13
		158843	Camsleeve, 2 Cycle 11	159135	Guide, Tape 2
		158844	Camsleeve 8		

## NUMERICAL INDEX (Continued)

Part Number	Description and Page Number	Part Number	Description and Page Number	Part Number	Description and Page Number
159138	Stud 3	161326	Bail, Pusher 5	173489	Lid, Tape 3
159142	Shaft Assembly 1,8	161328	Shaft, Pivot 5	173497	Yoke Assembly 1,3
159143	Spring, Torsion 3	161482	Casting, Main 2,3,4,5, 6,7,12,13,14,16	173690	Extension, Tape Lid 4
159147	Latch 3	161494	Washer, Felt 3	173697	Gear, 84T 10
159150	Yoke 3	161837	Bracket 15	173700	Depressor, Tape 4
159153	Plate, Top 3	162354	Reservoir, Oil 4	173701	Shaft Assembly 1,10
159155	Lid, Tape 3	162355	Bracket 4	173788	Deflector, Tape 3
159158	Deflector, Tape 3	162470	Plate, Adapter 7	173871	Spring 4
159161	Shaft Assembly 1,11	162476	Plate 12	174085	Spacer, .385" Thk 7
159162	Shaft Assembly 1,9	162573	Retainer 9,11	174326	Bracket w/Gasket 16
159164	Bracket, Deflector 6	163011	Pinion, 23T 4	174327	Cover 16
159241	Camsleeve 10	163012	Gear, 46T 8,10	174329	Plunger 16
159244	Plate 3	163014	Gear, 48T 10	174330	Gasket 16
159313	Reservoir Assembly 4	163363	Stud 4	174331	Insulator, .031" Thk 16
159341	Bearing, Ball 8,9,10,11	163483	Shaft Assembly 1,10	174334	Contact Assembly 16
159800	Spring 12	163485	Camsleeve 10	174506	Block, Contact 12
159802	Pawl, Detent 3	164363	Camsleeve 8	176158	Cover 2
159803	Stud, Eccentric 3	164364	Shaft Assembly 1,8	176159	Cover 2
159804	Spring 13	164568	Modification Kit 5	176164	Bracket, Cover 2
159805	Washer, Flat 3	164930	Modification Kit 13,15	176166	Post 2
159806	Shaft 3	164931	Bracket 13	176264	Modification Kit 1,2
159807	Cover 2	165027	Network, Spark Suppression 15	176265	Modification Kit 1,2
159808	Screw, 6-40 Captive 2	170731	Contact Assembly 14	178171	Modification Kit 7
159814	Spring, Compression Gold Plated 13	170732	Plate, Top 14	179059	Chute, Tape 16
159815	Spring 13	170733	Plate, Bottom 14	179129	Modification Kit 1,16
159816	Stud 4	170951	Slide 14	179135	Lever, Push 6
159848	Shaft Assembly 1,10	170952	Plate, Rear Side 14	179228	Modification Kit 1,16
159851	Cover 2	170953	Plate, Front Side 14	193567	Post, Spring 15
159872	Block Assembly 12	170954	Guide 14	193722	Bushing, Insulator 16
159878	Shaft Assembly 1,10	170955	Bar, Support 14	193784	Screw, Contact 13
159906	Stud, Shoulder 4	170956	Bracket, Contact 14	193785	Screw, Contact Gold Plated 13
160434	Spring 6	171959	Connector, Blue Shielding 17	193788	Lever, Contact 13
160562	Screw, 6-40 Spl 4	171969	Connector, Orange Shielding 17	193789	Lever, Contact Gold Plated 13
160563	Wick, Leather 4	172061	Bushing, Shoulder 14	193792	Lever, Contact 13
160564	Stiffener 4	172629	Gear, 38T 10	312428	Plate 7
160565	Bail 4	172757	Camsleeve 10	315764	Cover 14
160566	Bracket 4	172792	Shaft Assembly 1,10	315765	Cover 14
160567	Reservoir, Oil 4	172793	Switch Assembly 1,14	315766	Modification Kit 14
160659	Gear, 54T 11	173362	Stiffener 3	320416	Terminal, Ring Type 13,17