

28 AND 35 TAPE HANDLING STAND (LTHS)
PARTS

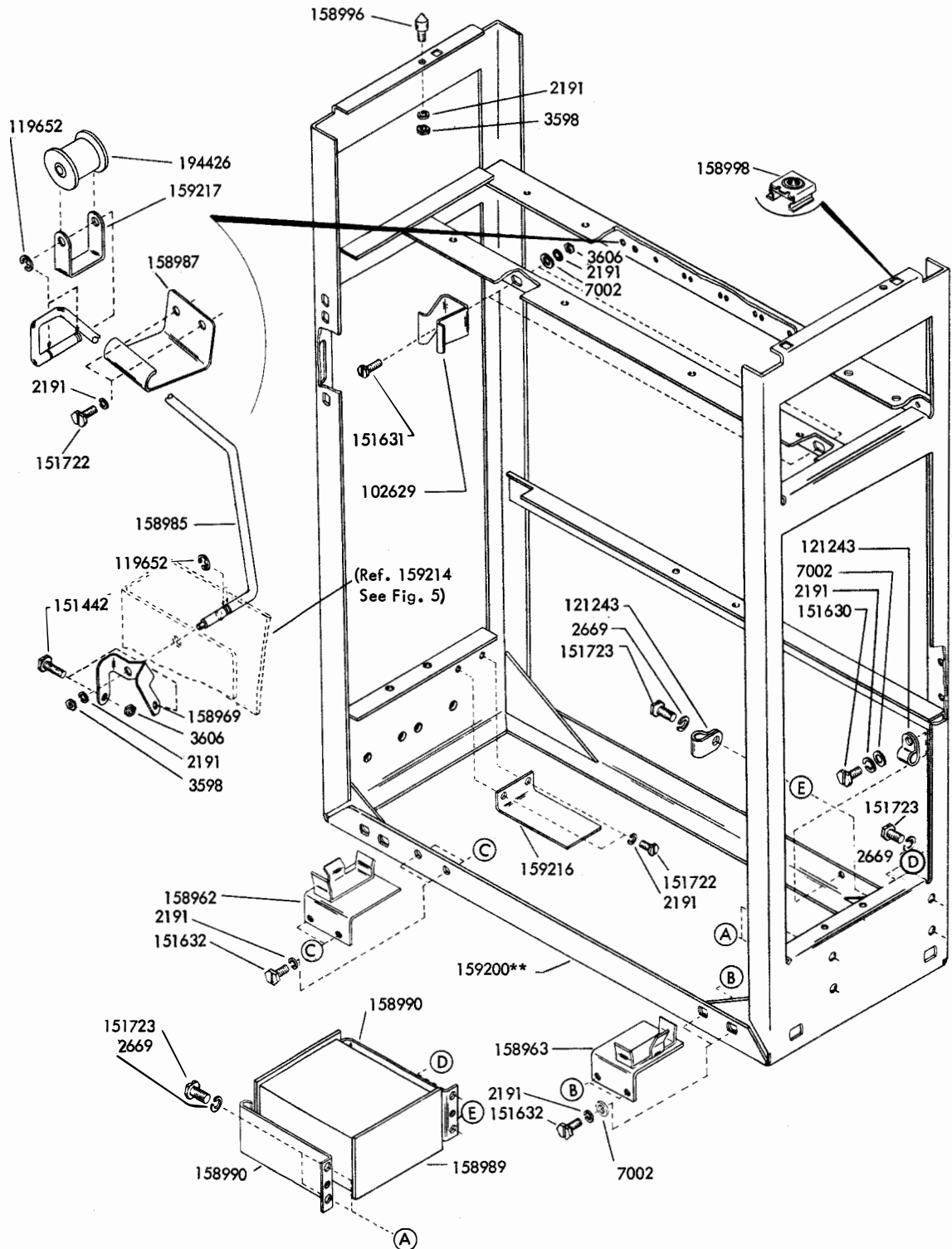
PAINT FINISH COLOR CODE CHART																	
(for parts and assemblies requiring a paint finish)																	
Color	Finish Suffixes				Color	Finish Suffixes											
	Wrinkle Finish	Smooth Finish	Textured Vinyl	Smooth Vinyl		Wrinkle Finish	Smooth Finish	Textured Vinyl	Smooth Vinyl								
Beige	AA (37)	ET			Gray, Federal	AB (40)	BV	GG	HB (68) HE HF (46)								
Beige, Light		EL			HC		Gray, Green	BK		GA (45)							
Beige, Rose		ER			Gray, Light		EJ										
Black		BA (34)					Gray, Covert	AJ		BJ	EW	GE					
Black, High Gloss							BB						Gray, Olive	AB (40)	BK	GA (45)	
Black, Semi Gloss							EK						Gray, Maritime Deck				EN
Blue, Aqua							EC						Gray, Oxford				
Blue, Brussels Light		ES			Green, Gray		EU										
Blue, Medium		AD (38)						Green, Moss		EV							
Brown, Dark								AC (39)			Ivory	EH					
Brown, Light	AL	BZ	GC	EG													
Fawn			GF		HA	White											
Gray, Beige	GB	Yellow, Pastel															

The double asterisk (**) denotes a painted part. Suffix to be applied following the part number. Number in parentheses indicates Bell System code.

Note:
When ordering parts from this section,
prefix each number with the letters TP.

Unit Covered	Teletype Code	Bell System Code
Tape Handling Stand	LTHS200** LTHS210**	28A**

Figure		Page
1	Frame	3
2	Frame (Continued)	4
3	Tape Winder	5
4	Tape Winder (Continued)	6
5	Tape Winder (Continued)	7
6	160763**, 164598**, 179181** and 147897** Tape Storage Bin Assemblies (with Motor)	8
7	159202** Tape Storage Bin Assembly (without Motor)	9
8	159218 Latch Assembly	10
9	159222 Tape Winder Reel Assembly and 159223 Tape Supply Reel Assembly (Low Speed)	11
10	170835 Tape Winder Assembly (High Speed)	12
11	Cover (Oil Shield)	13
12	163706 and 304898 Separator Assemblies and 172681 Modification Kit to Provide Bin Full Alarm	14
13	Frame	15
14	170800** and 173718** Tape Storage Bin Assemblies	16
15	Front Plate Mechanism (High Speed)	17
16	Rear Plate	18
17	Frame and Electrical Components	19
18	176176 Modification Kit to Provide Belt Drive for Low Speed Tape Handling	20
19	174472 Modification Kit to Provide AC Lighting for LTHS Stand	21
20	174569 Modification Kit to Provide End-of-Tape Contacts on Tape Handling Stands	22
21	174626** and 190328** Tape Storage Bin Assemblies (with Motor)	23
22	174815 and 193230 Modification Kits to Provide 48V Power Supply	24
23	177035 Modification Kit to Provide Tape Bin Low Alarm	25
24	178234** Tape Storage Bin Assembly (with Motor)	26
25	Frame Mechanism	27
26	Frame Mechanism (Continued)	28
27	190596 Tape Storage Bin Assembly	29
28	190594 Tape Supply Reel Assembly	30
29	190595 Tape Winder Reel Assembly	30
30	174855** Line Relay Modification Kit	31
31	190011** Open Line and Busy Line Modification Kit	32
32	194169 Modification Kit to Provide a Rigid Tape Path	33
	Numerical Index	34



**Refer to page 1 for finish suffix

FIGURE 1. FRAME

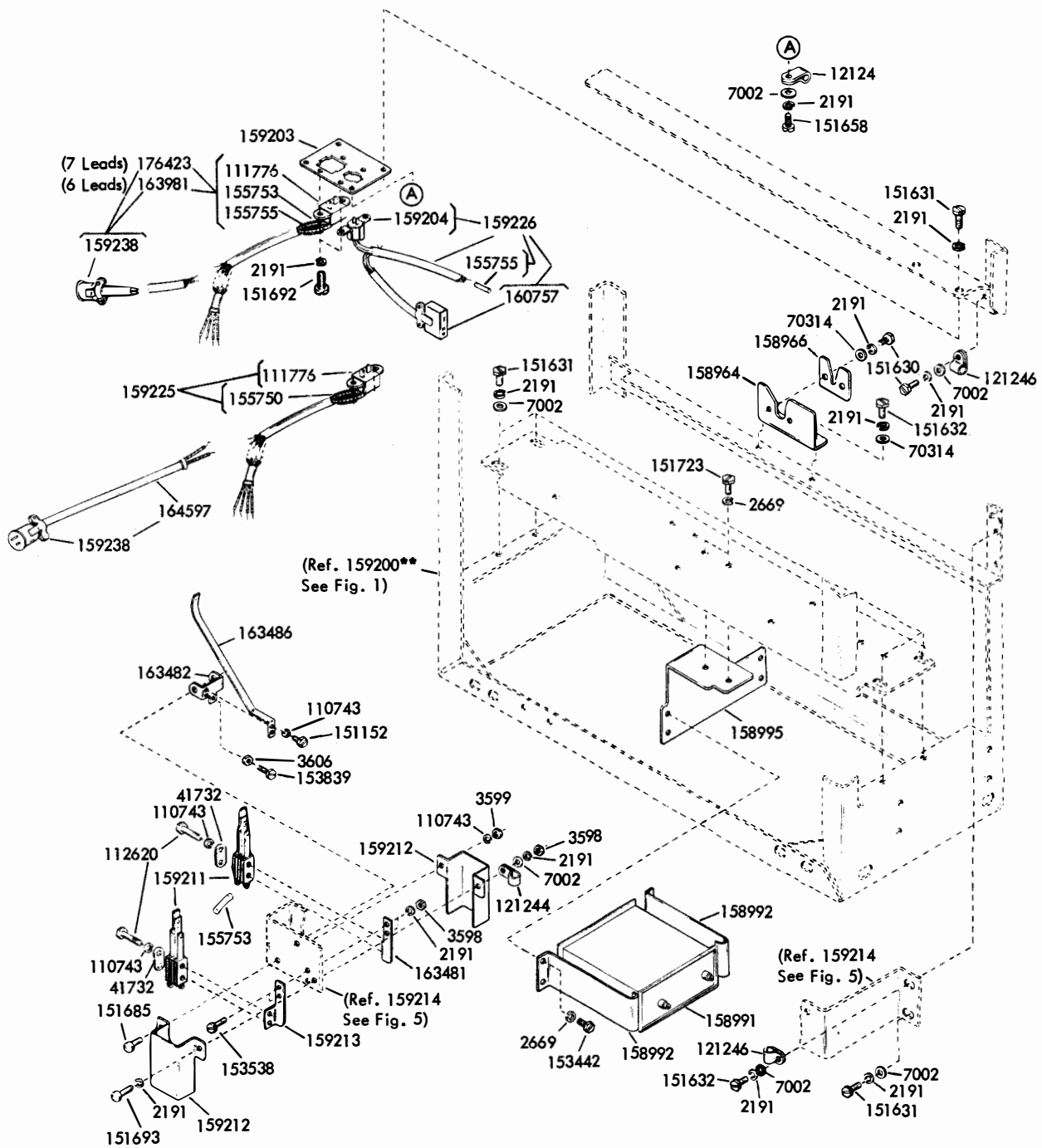


FIGURE 2. FRAME (Continued)

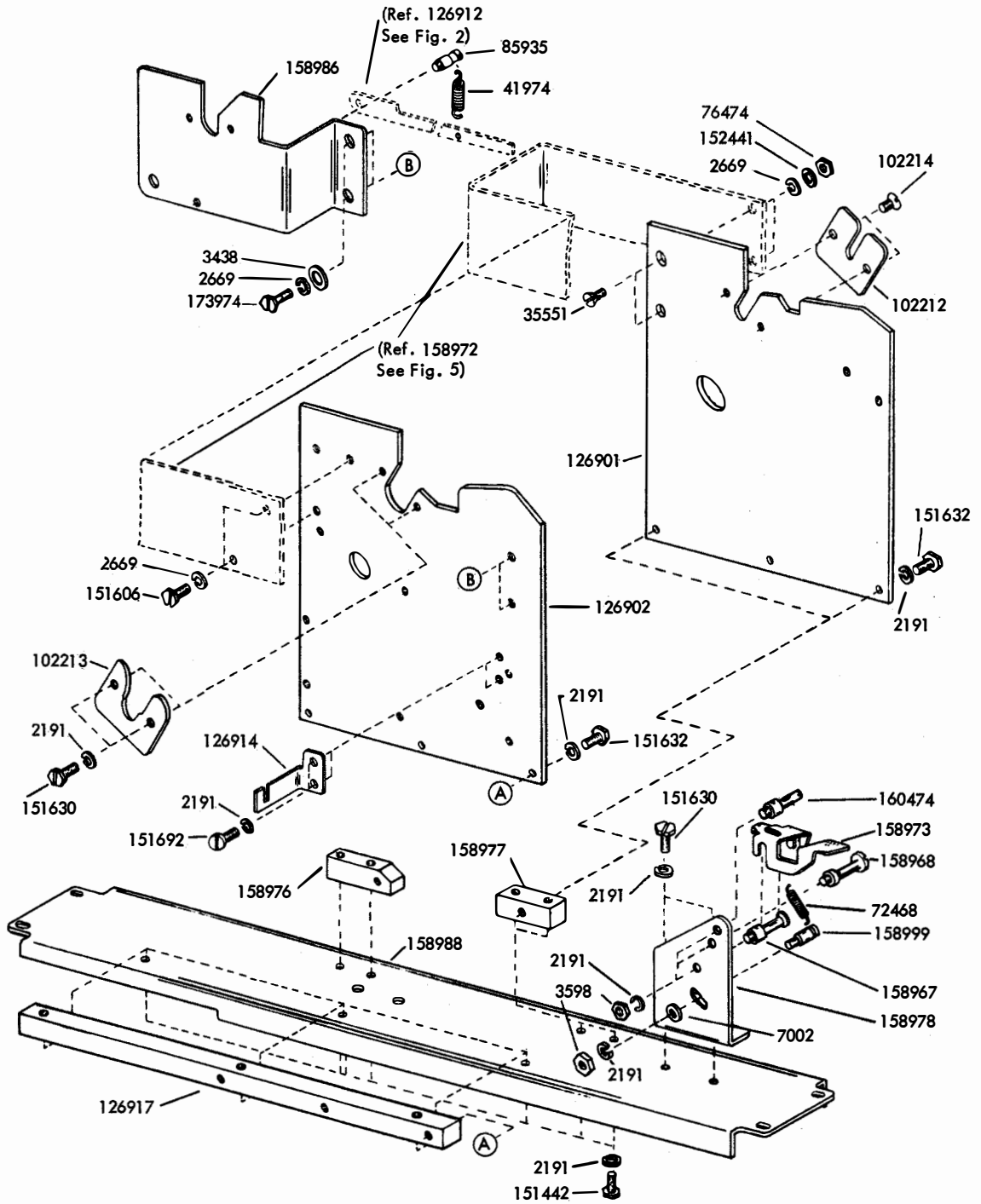
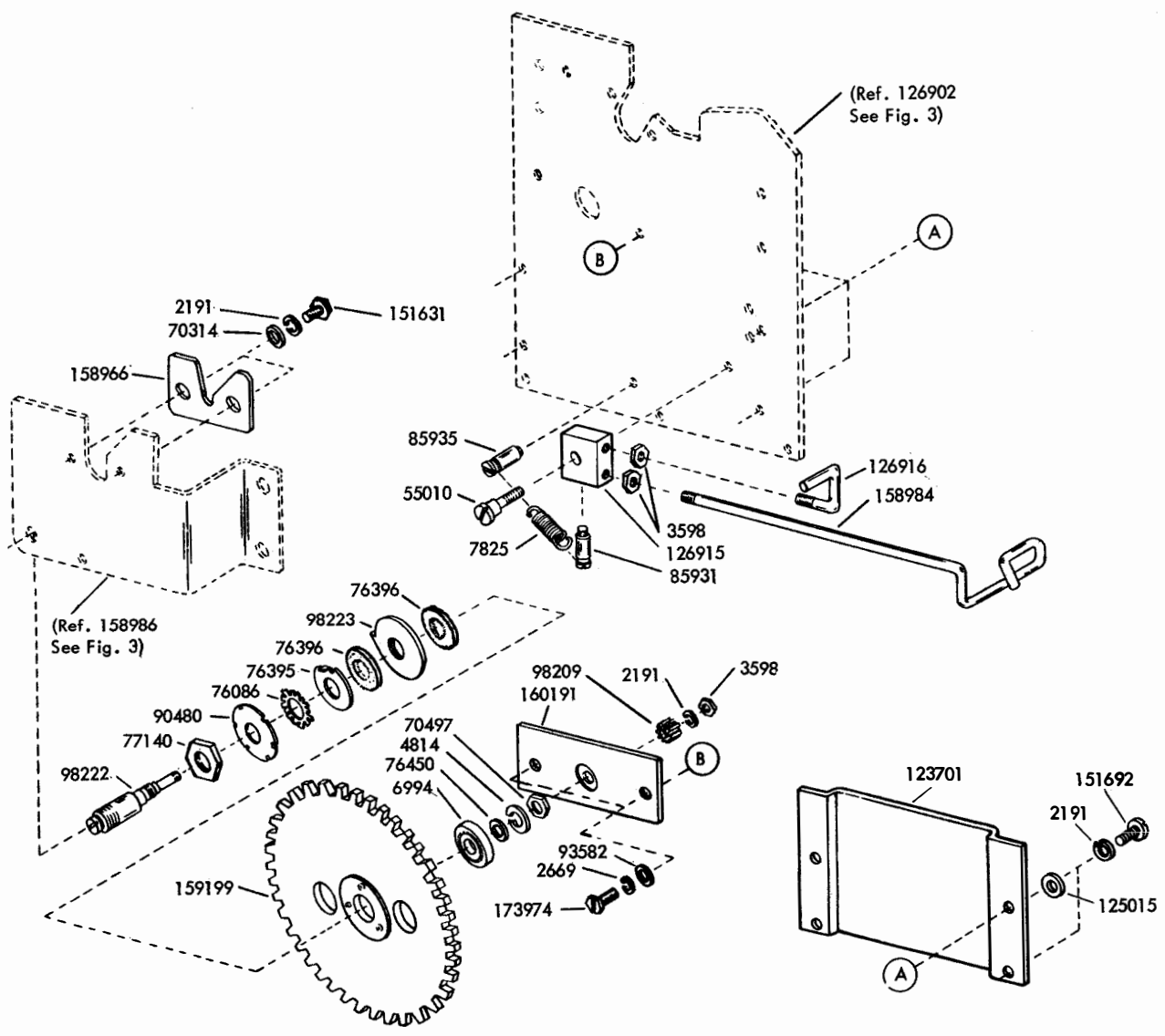


FIGURE 3. TAPE WINDER

FIGURE 4. TAPE WINDER (Continued)



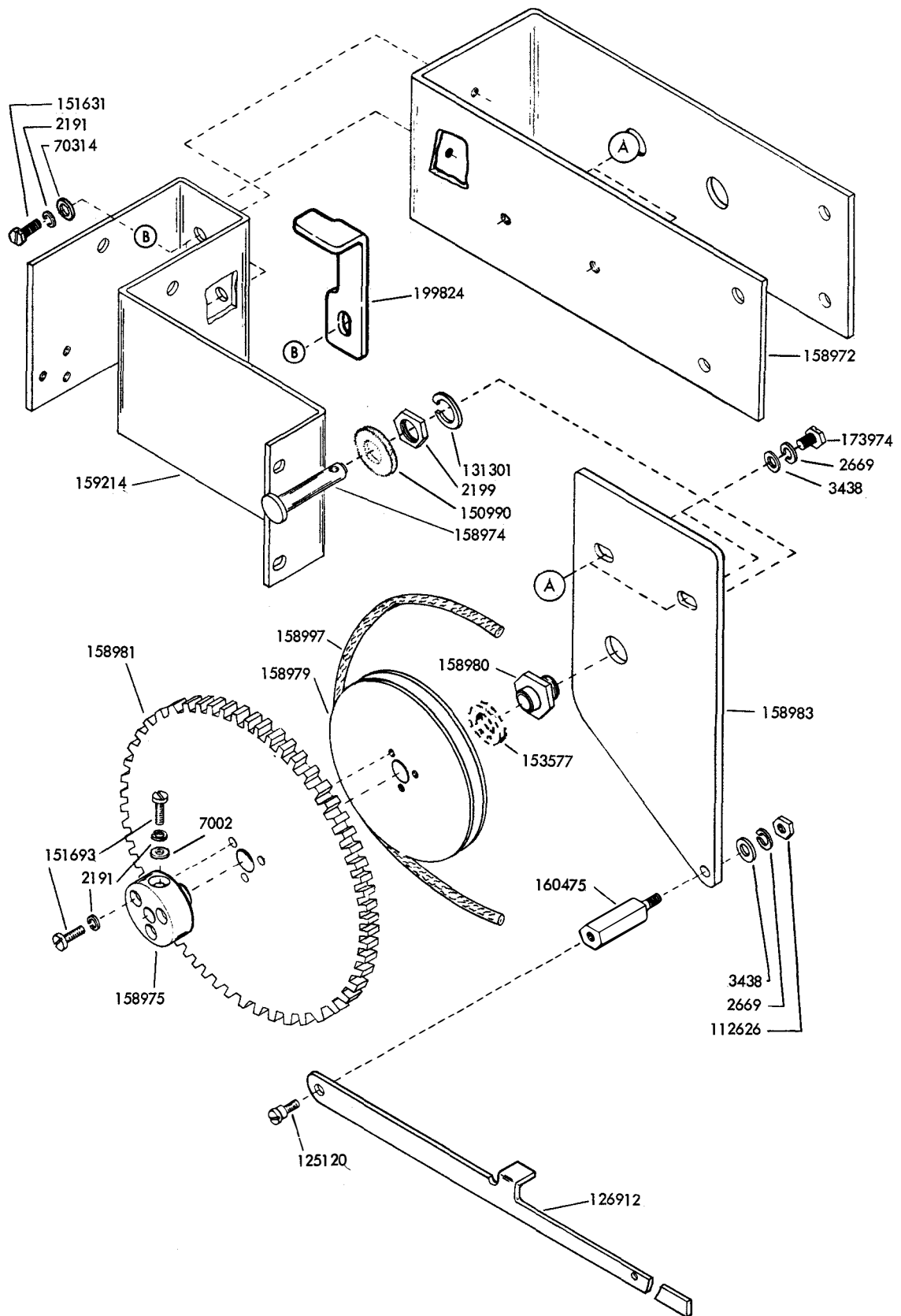
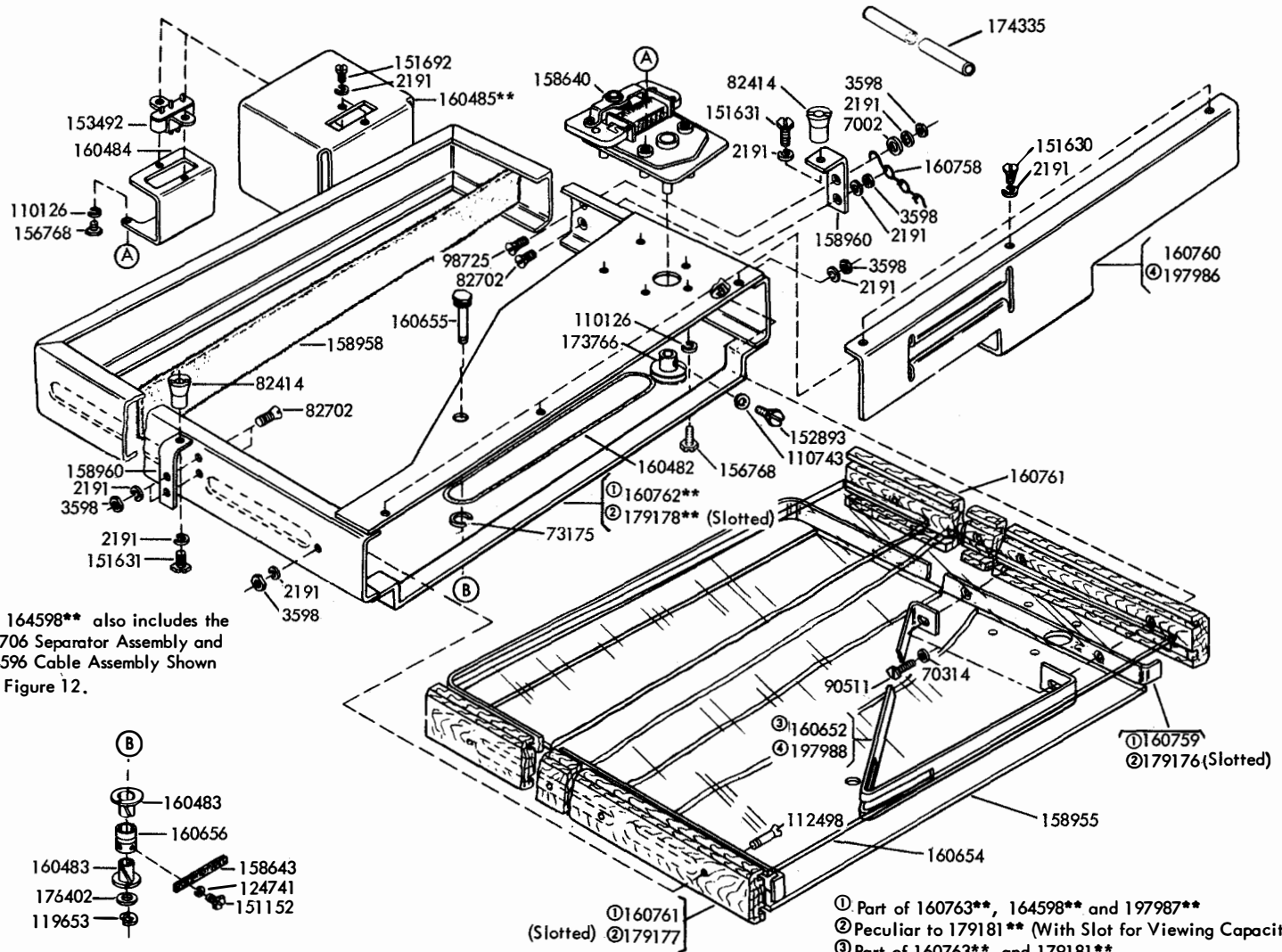


FIGURE 5. TAPE WINDER (Continued)

FIGURE 6. 160763**, 164598**, 179181** and 197987** TAPE STORAGE BIN ASSEMBLIES (WITH MOTOR)



Note: The 164598** also includes the 163706 Separator Assembly and 164596 Cable Assembly Shown on Figure 12.

The 164598** Bin Assembly is equipped with a bin full alarm switch. The 179181** Bin Assembly is equipped with a slot for viewing the tape capacity without removal of the tape handling stand from the cabinet. The 160763** Bin Assembly has neither of these features.

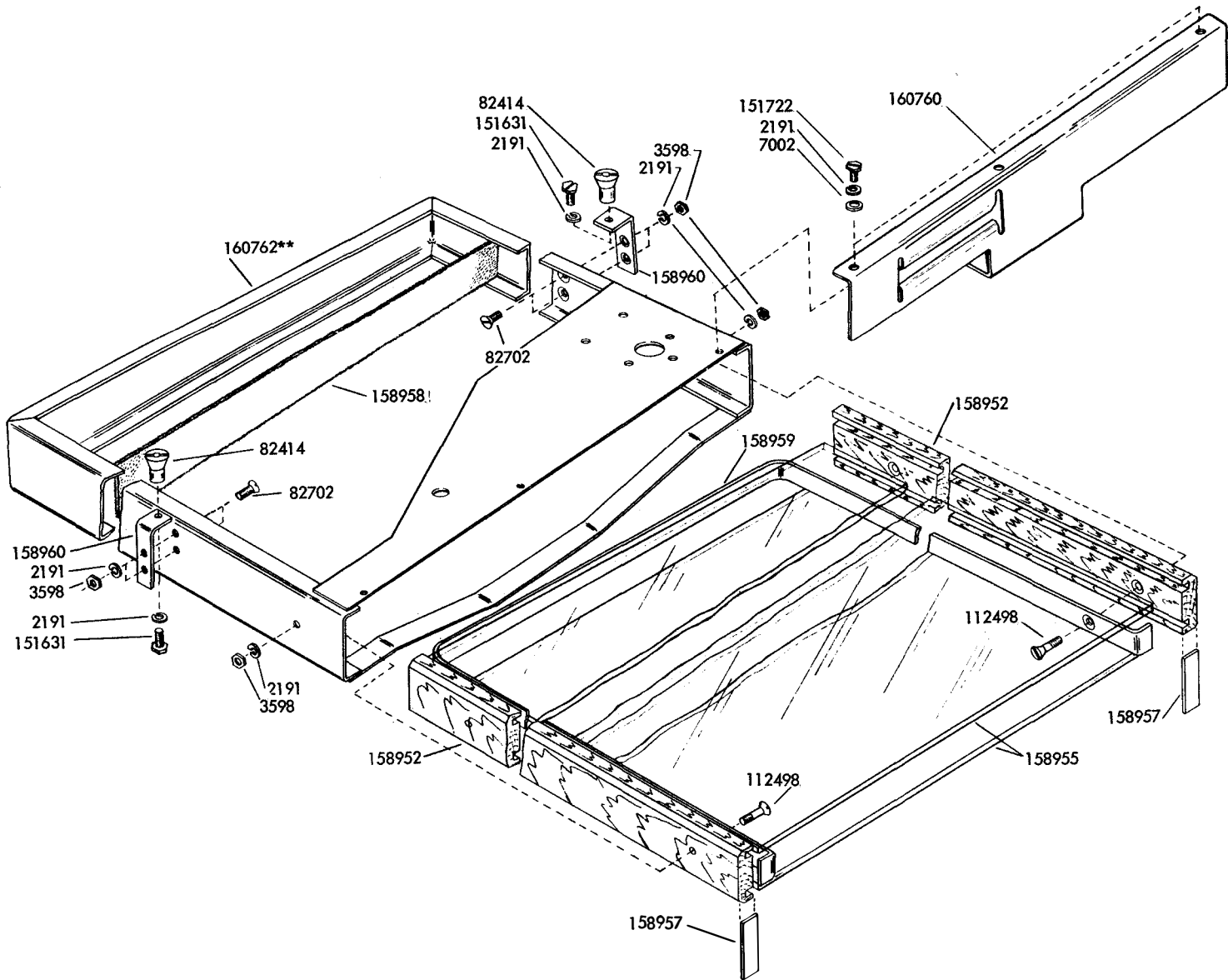
These bins are approximately 24-3/8" long by 14" wide, equipped with clear laminated glass and are for use only with chadless tape.

The 197987** also includes the 304898 Separator Assembly and 164596 Cable Assembly Shown on Figure 12.

**Refer to page 1 for finish suffix

- ① Part of 160763**, 164598** and 197987**
- ② Peculiar to 179181** (With Slot for Viewing Capacity)
- ③ Part of 160763** and 179181**
- ④ Peculiar to 197987**

FIGURE 7. 159202** TAPE STORAGE BIN ASSEMBLY (WITHOUT MOTOR)



**Refer to page 1 for finish suffix

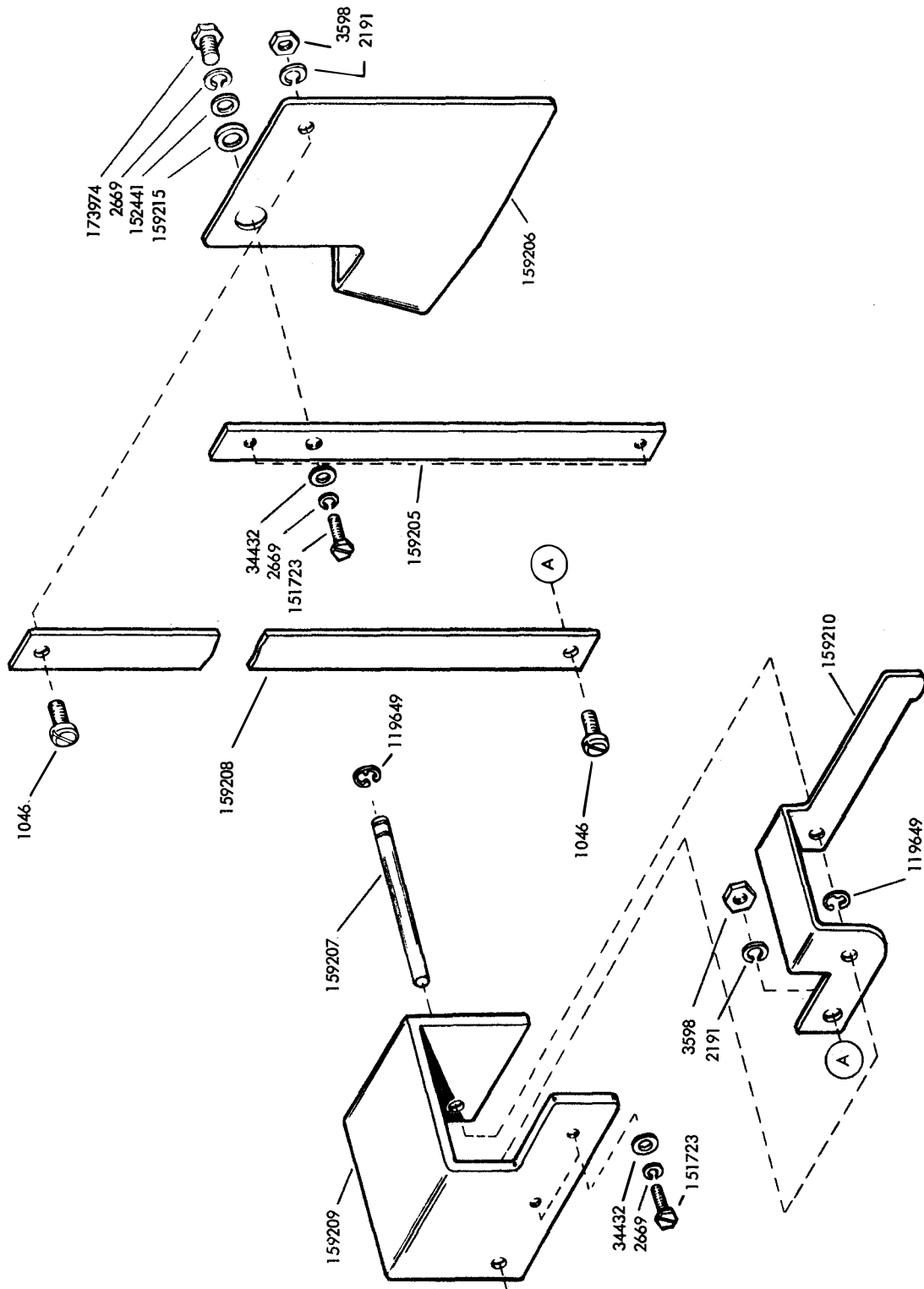


FIGURE 8. 159218 LATCH ASSEMBLY

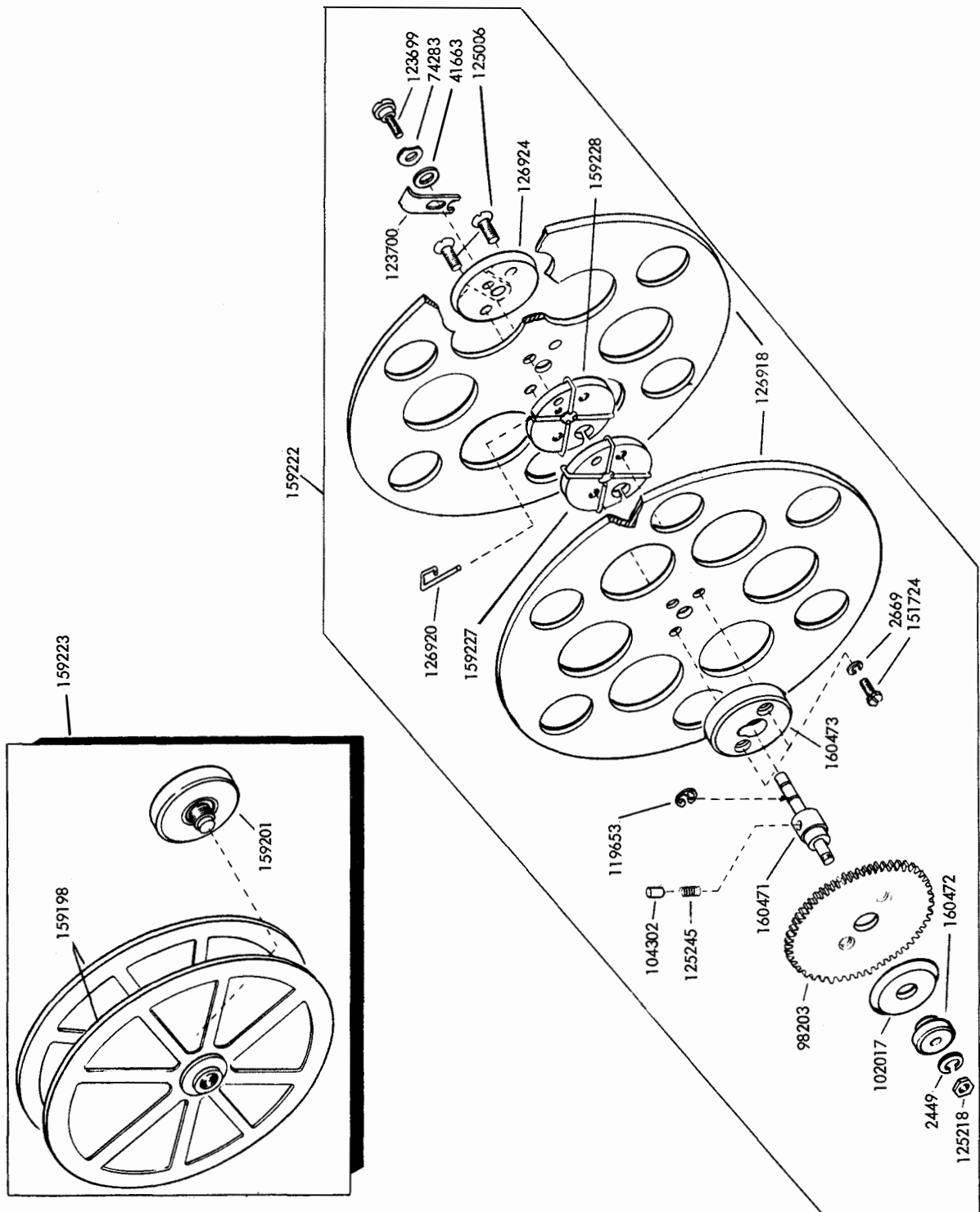
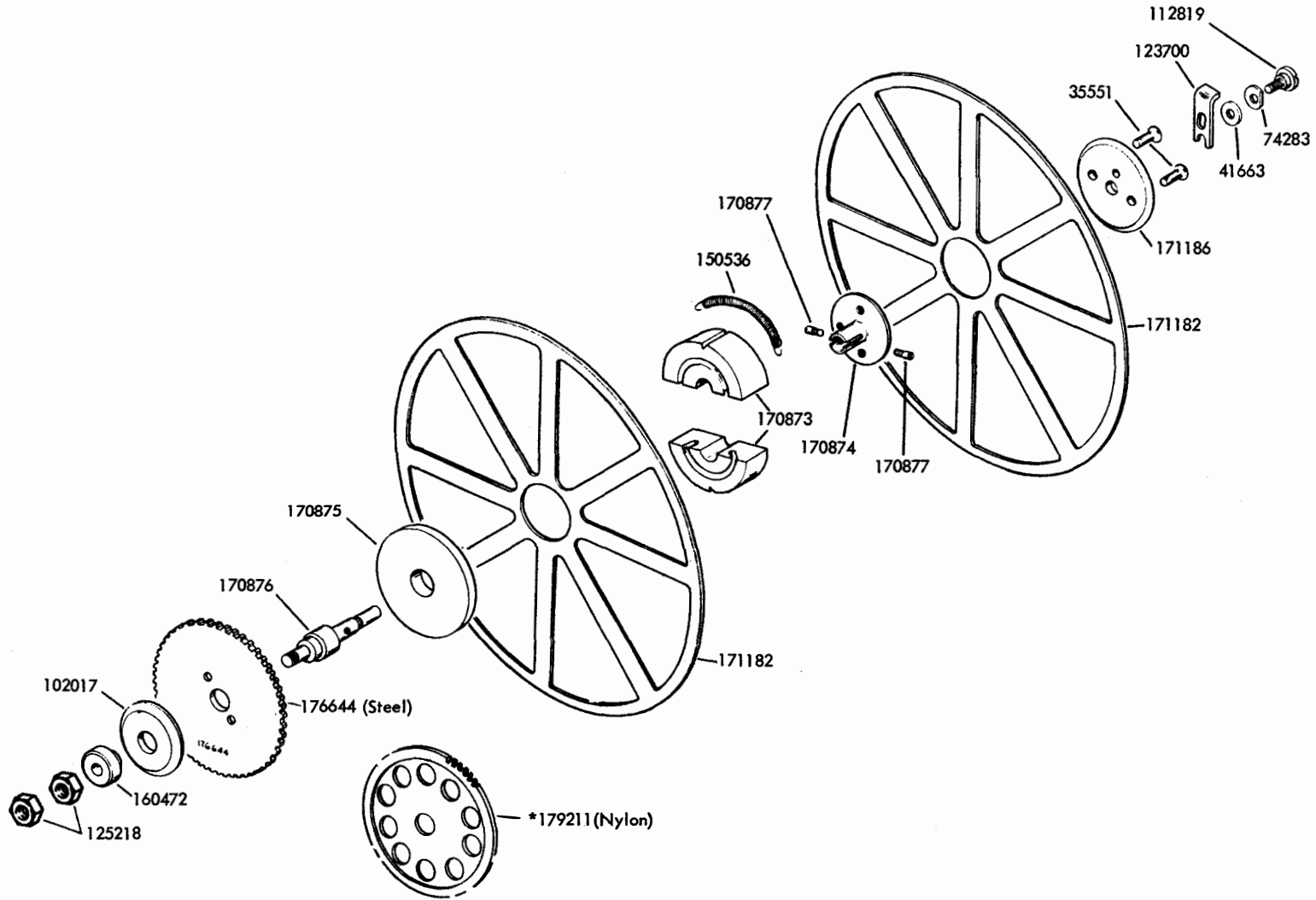


FIGURE 9. 159222 TAPE WINDER REEL ASSEMBLY AND 159223 TAPE SUPPLY REEL ASSEMBLY (LOW SPEED)

FIGURE 10. 170835 TAPE WINDER ASSEMBLY (HIGH SPEED)



*Part of 179746 Modification Kit. Also see Figure 15.

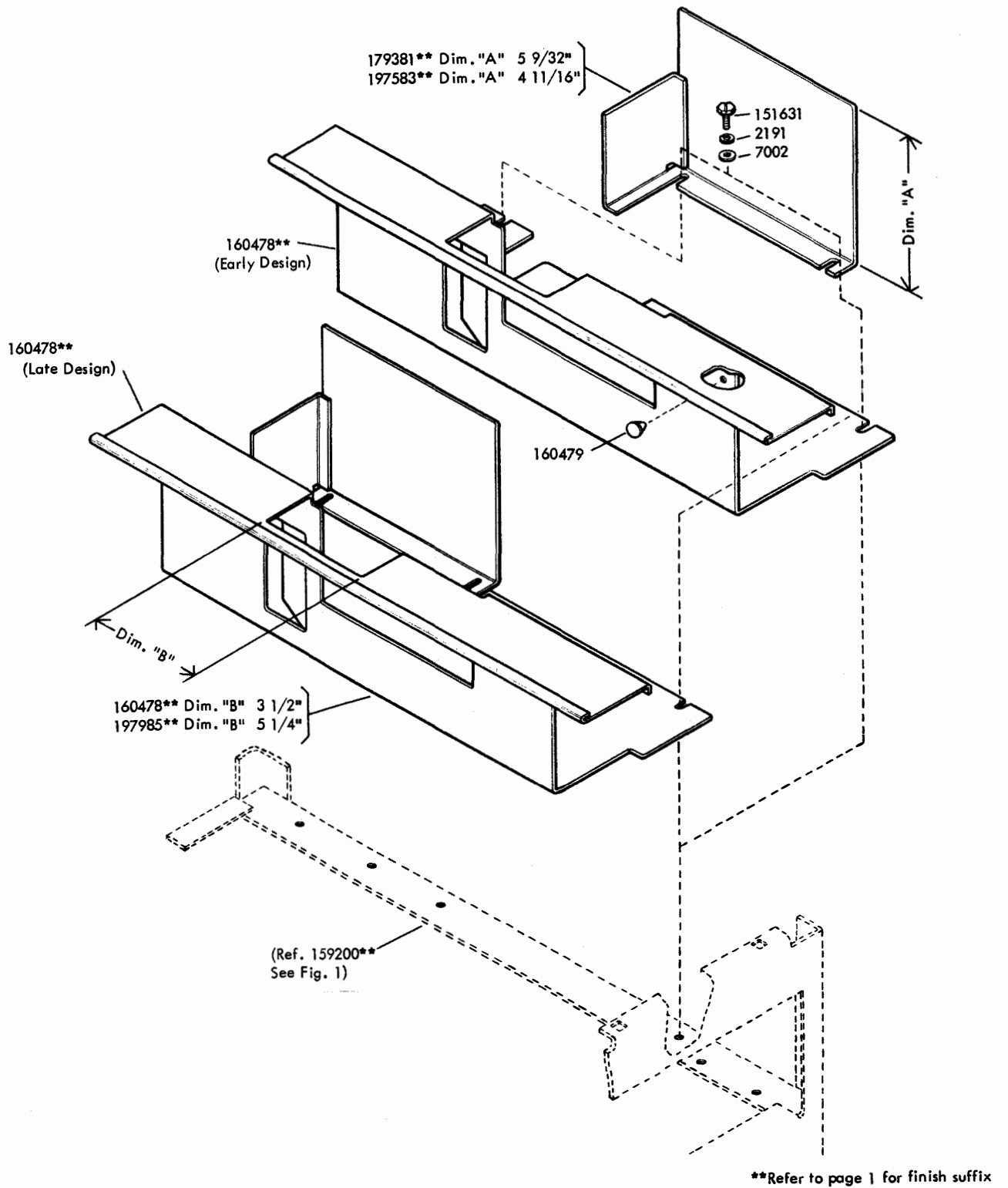
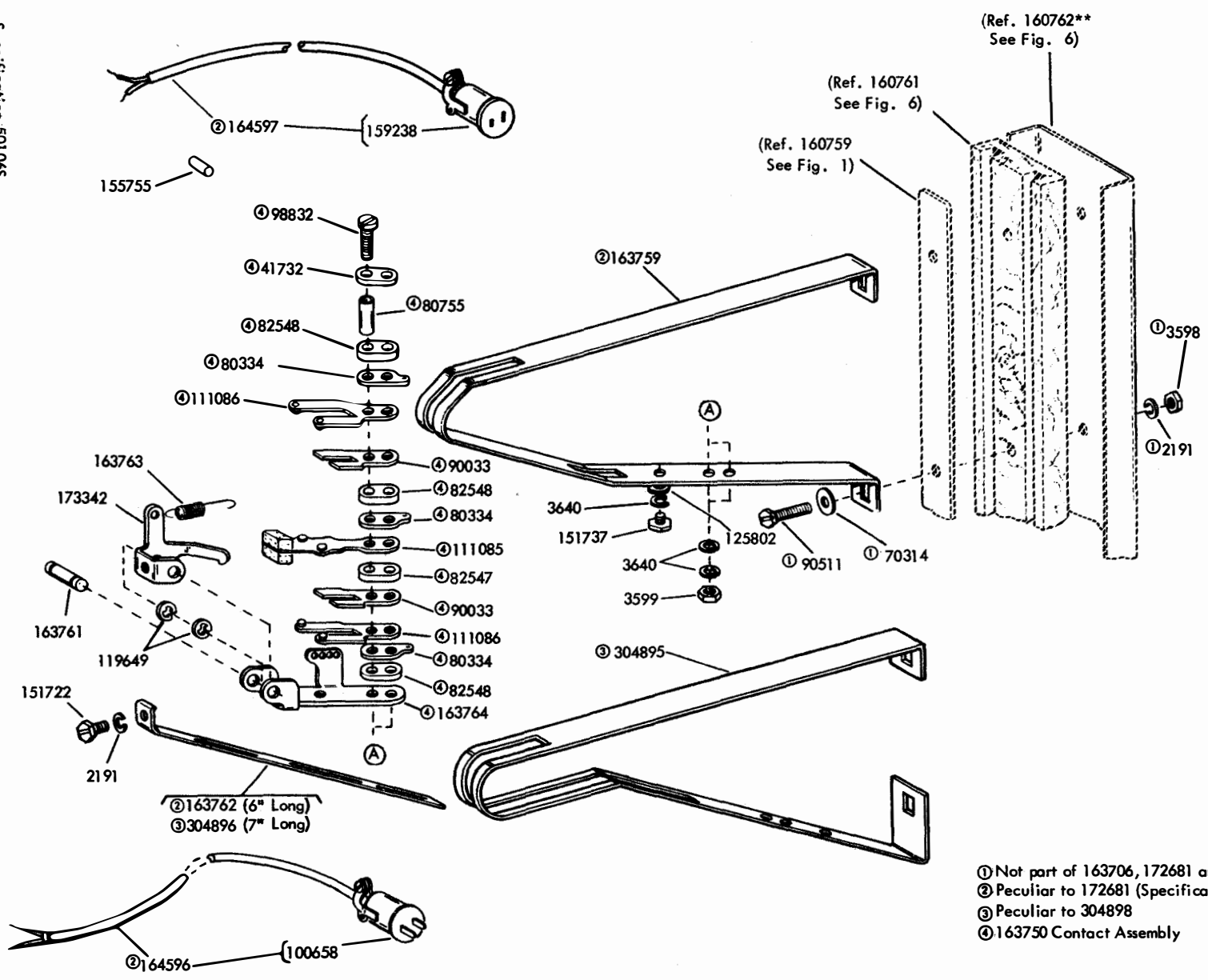


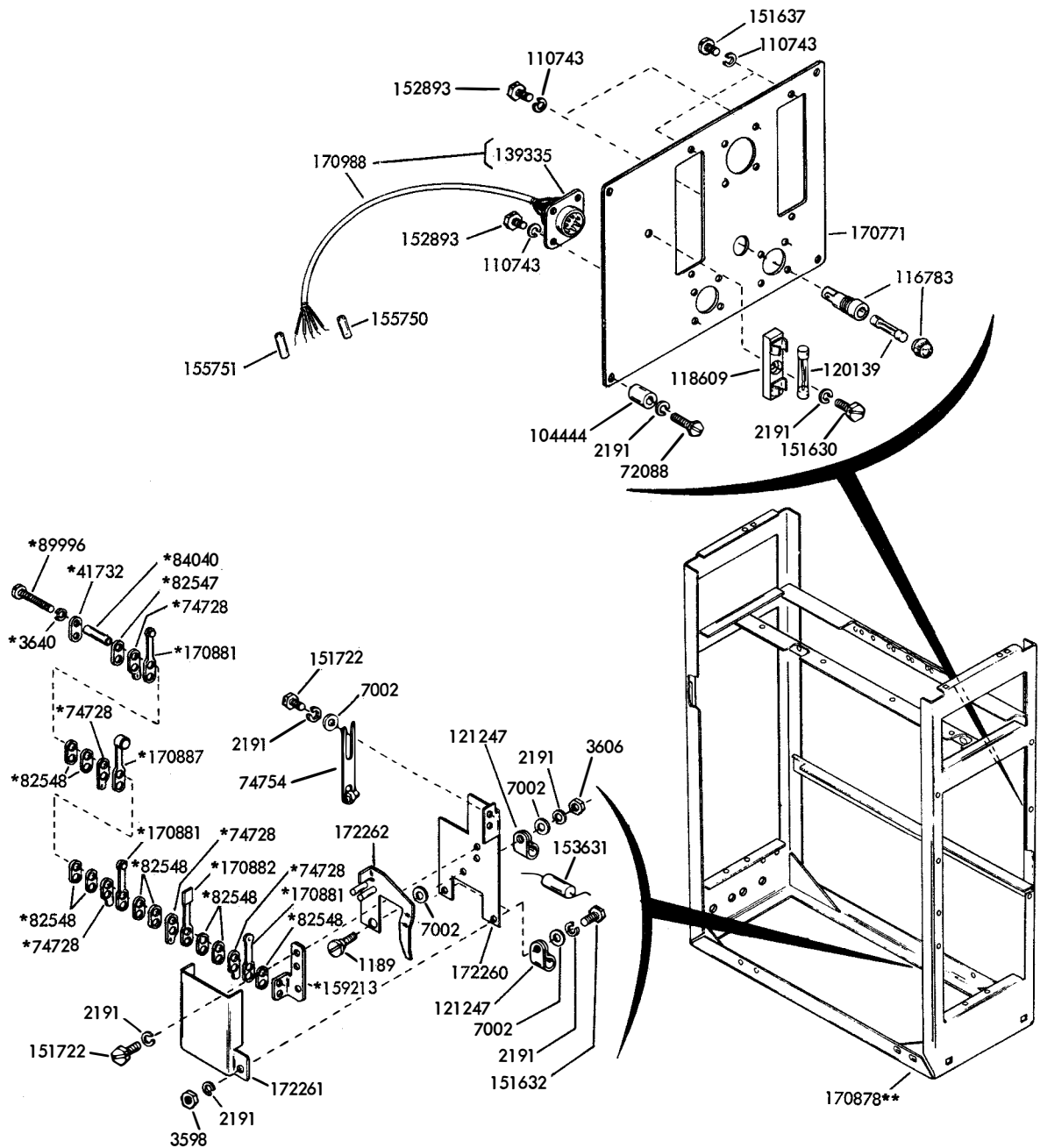
FIGURE 11. COVER (OIL SHIELD)

Specification 501065

FIGURE 12. 163706 AND 304898 SEPARATOR ASSEMBLIES AND 172681 MODIFICATION KIT TO PROVIDE BIN FULL ALARM



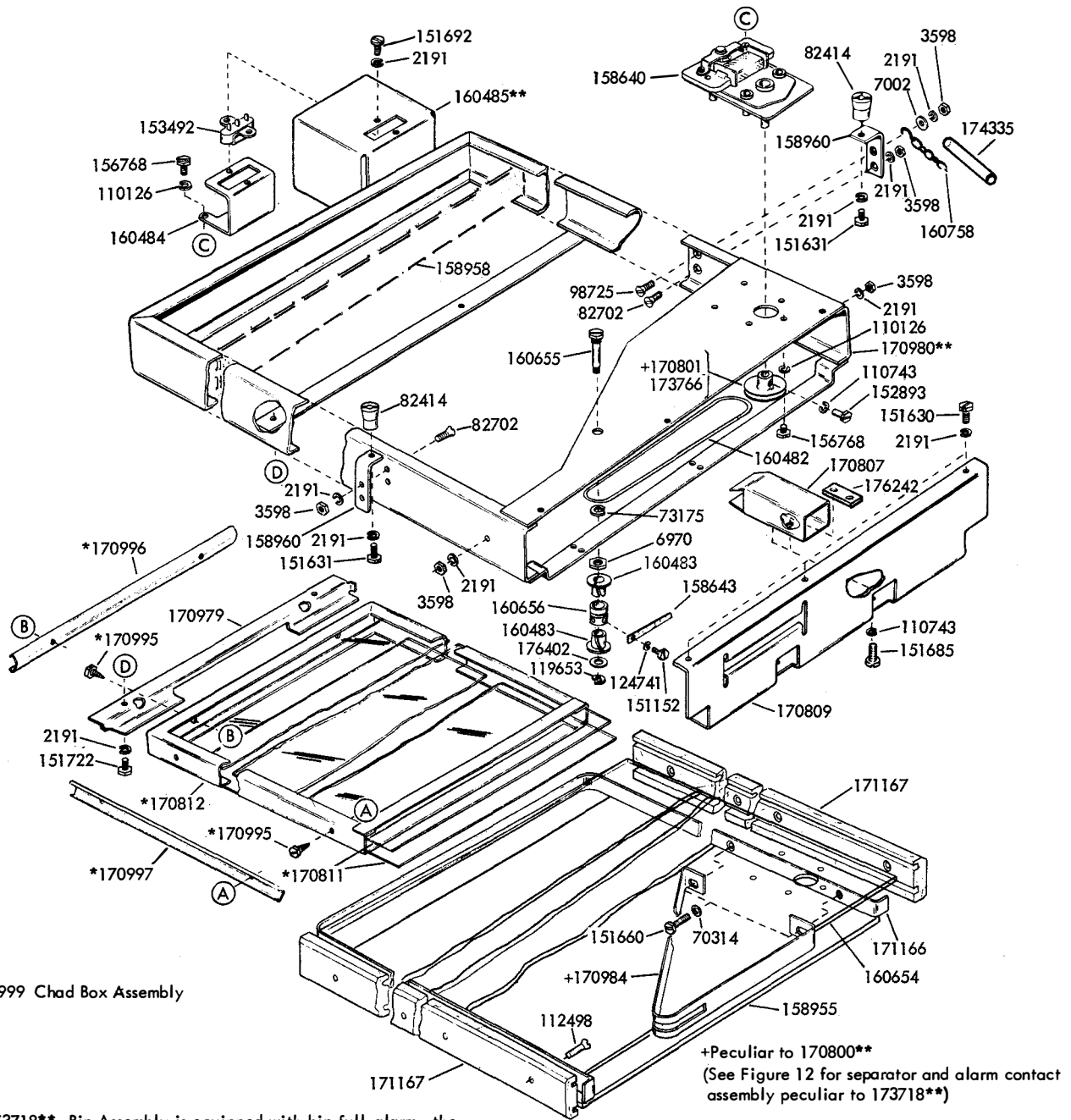
- ① Not part of 163706, 172681 and 304898
- ② Peculiar to 172681 (Specification 501065)
- ③ Peculiar to 304898
- ④ 163750 Contact Assembly



*170880 Tight Tape and Low Tape Contact Assembly

**Refer to page 1 for finish suffix

FIGURE 13. FRAME



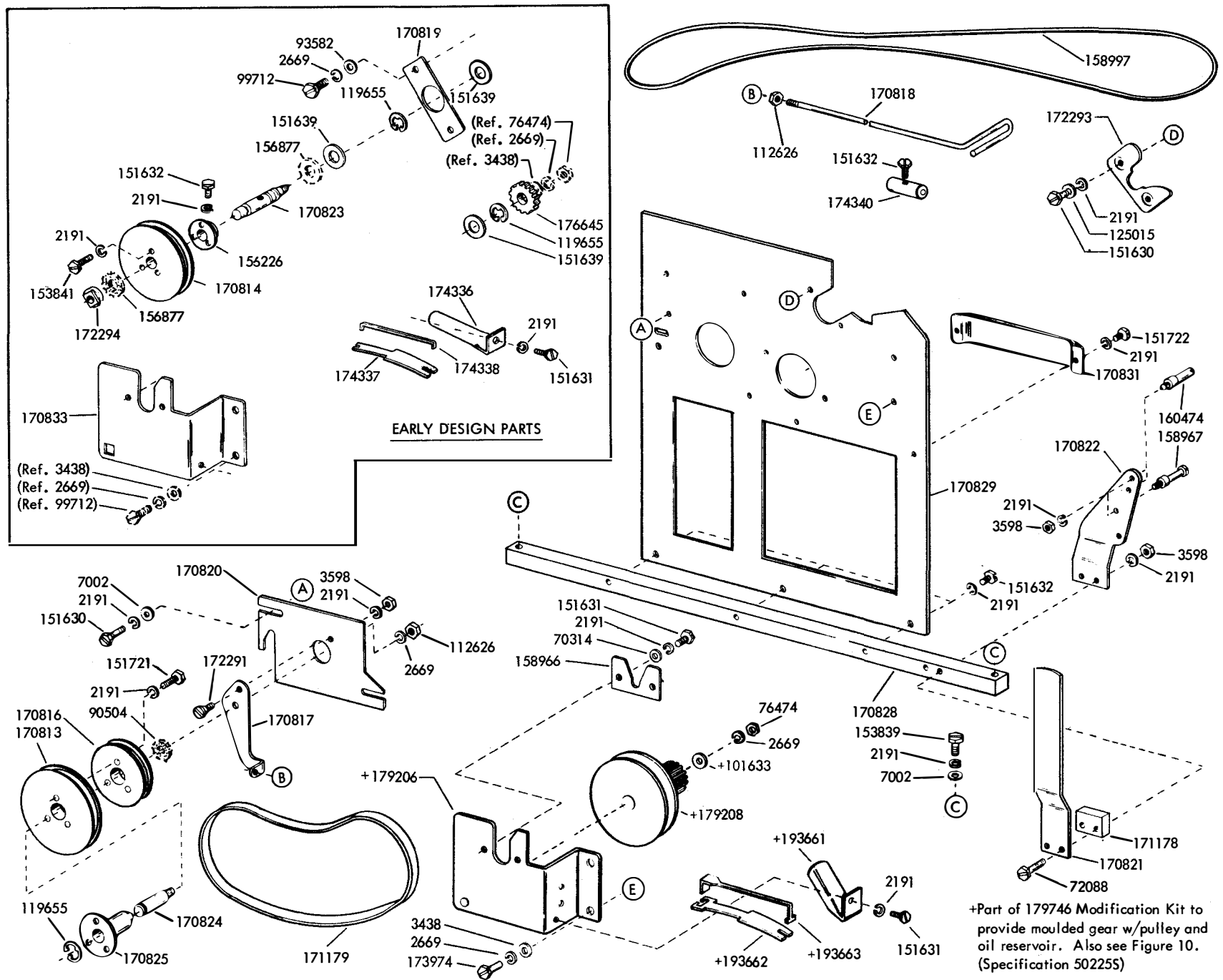
The 173718** Bin Assembly is equipped with bin full alarm, the 170800** Bin Assembly is not.

These bins are approximately 24-3/8" long by 14" wide, equipped with clear laminated glass and a chad box for use with fully perforated tape.

**Refer to page 1 for finish suffix

FIGURE 14. 170800** AND 173718** TAPE STORAGE BIN ASSEMBLIES

FIGURE 15. FRONT PLATE MECHANISM (HIGH SPEED)



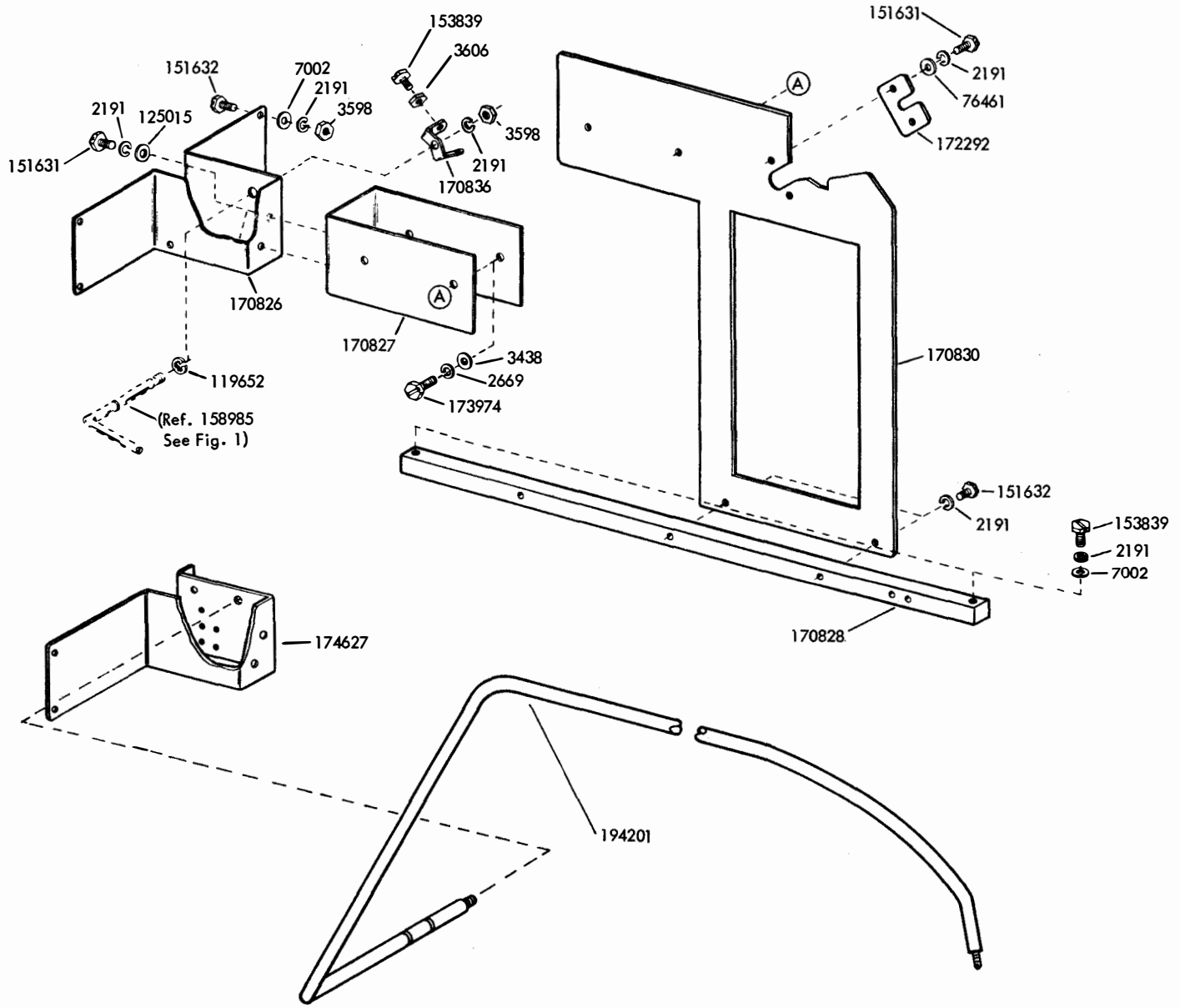
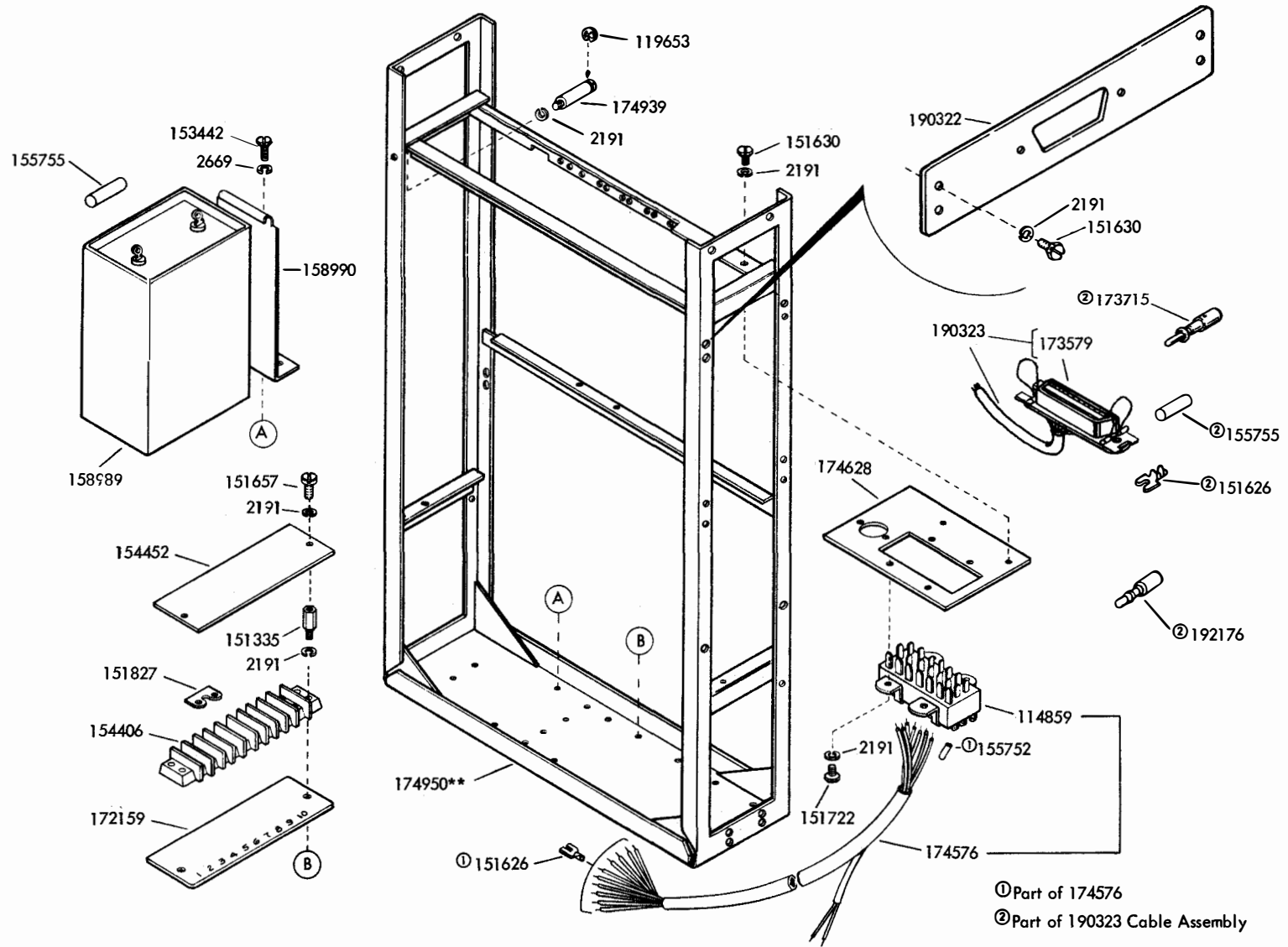
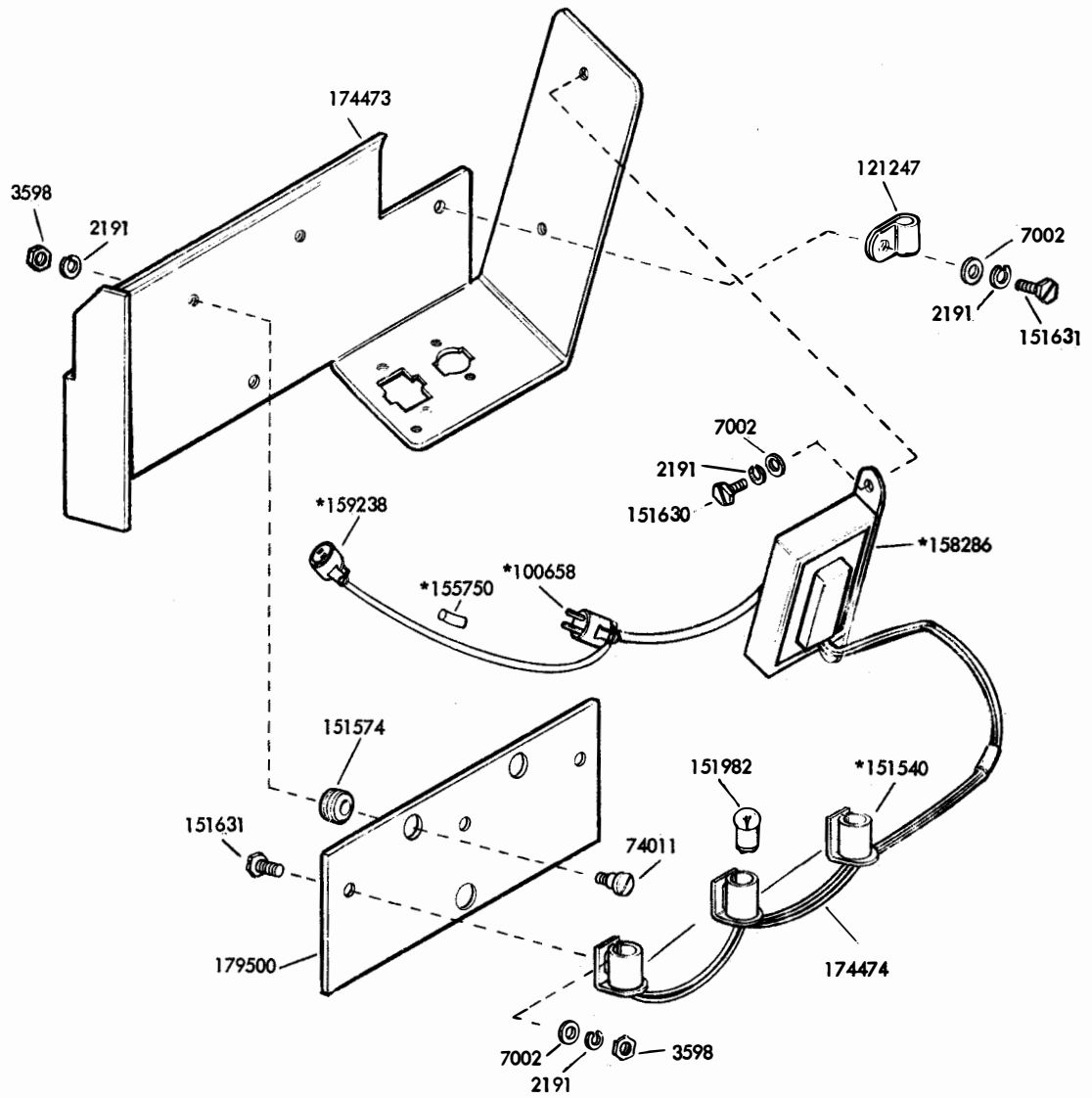


FIGURE 16. REAR PLATE

FIGURE 17. FRAME AND ELECTRICAL COMPONENT



**Refer to page 1 for finish suffix



*Part of 174474

Specification 500715

FIGURE 19. 174472 MODIFICATION KIT TO PROVIDE AC LIGHTING FOR LTHS STAND

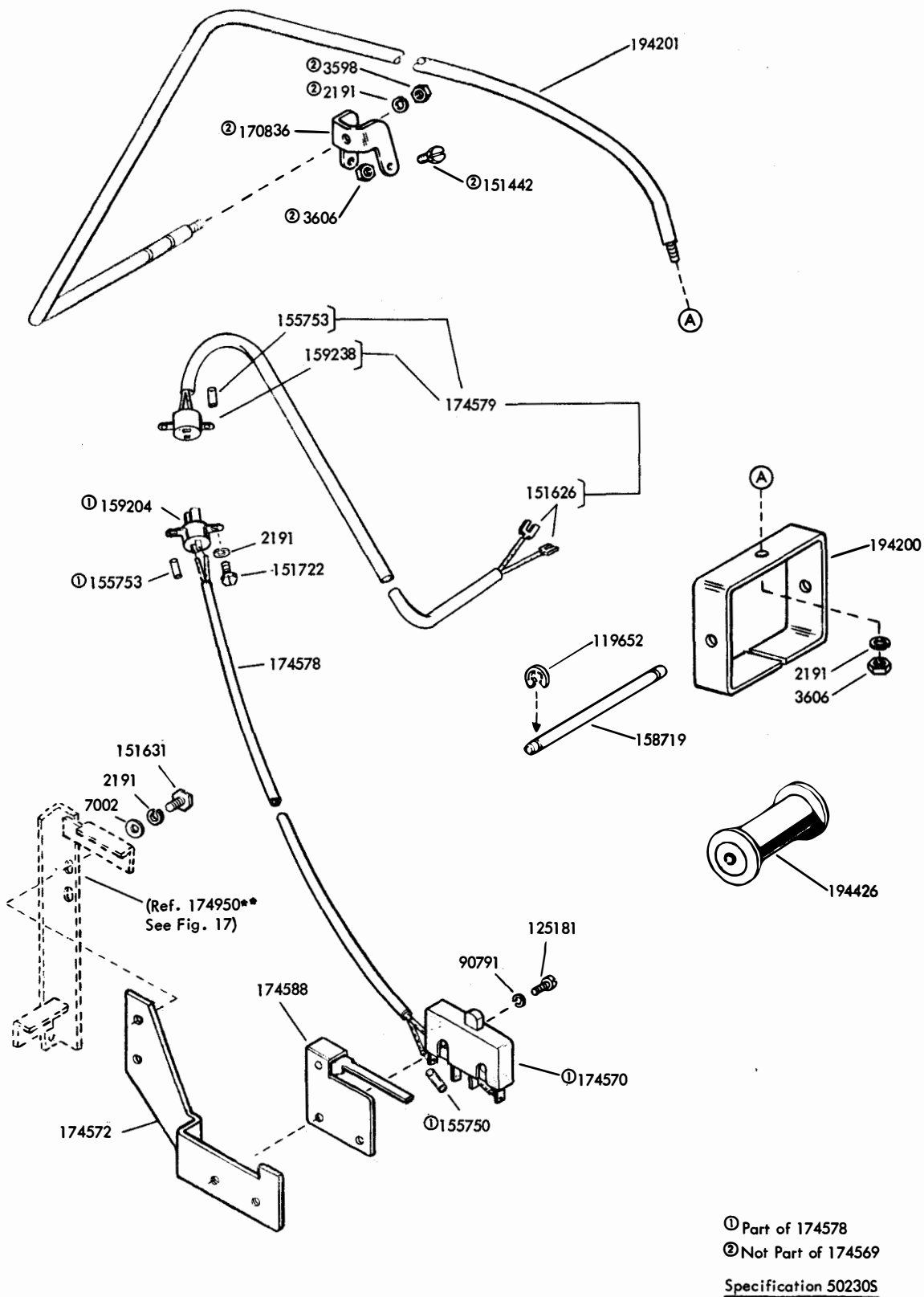


FIGURE 20. 174569 MODIFICATION KIT TO PROVIDE END-OF-TAPE CONTACTS ON TAPE HANDLING STANDS

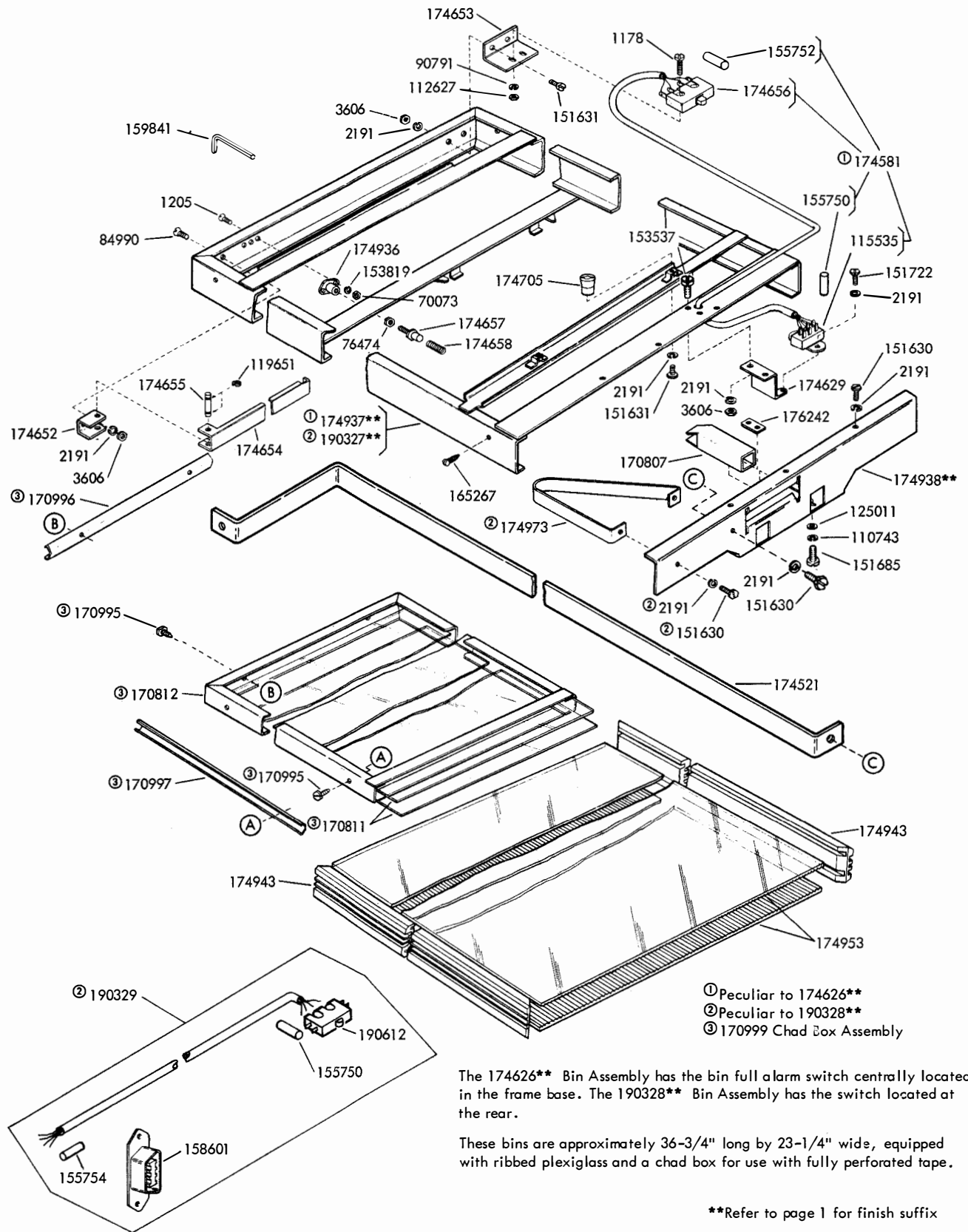


FIGURE 21. 174626** and 190328** TAPE STORAGE BIN ASSEMBLIES (With Motor)

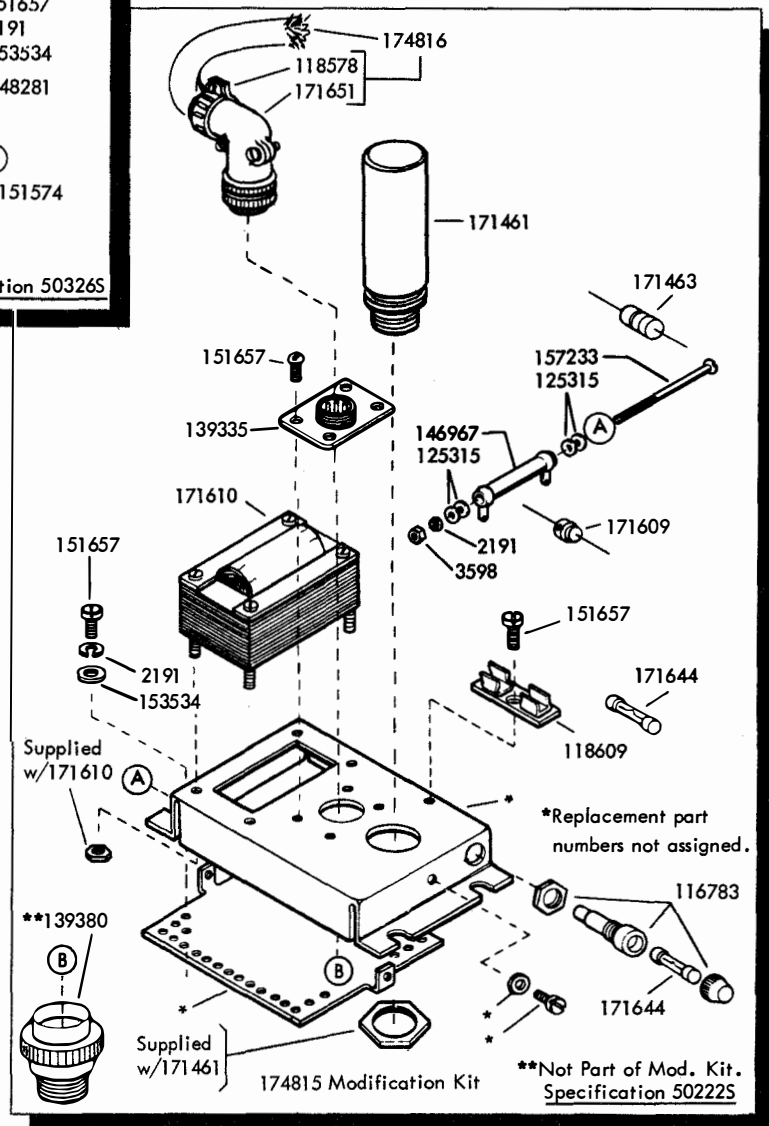
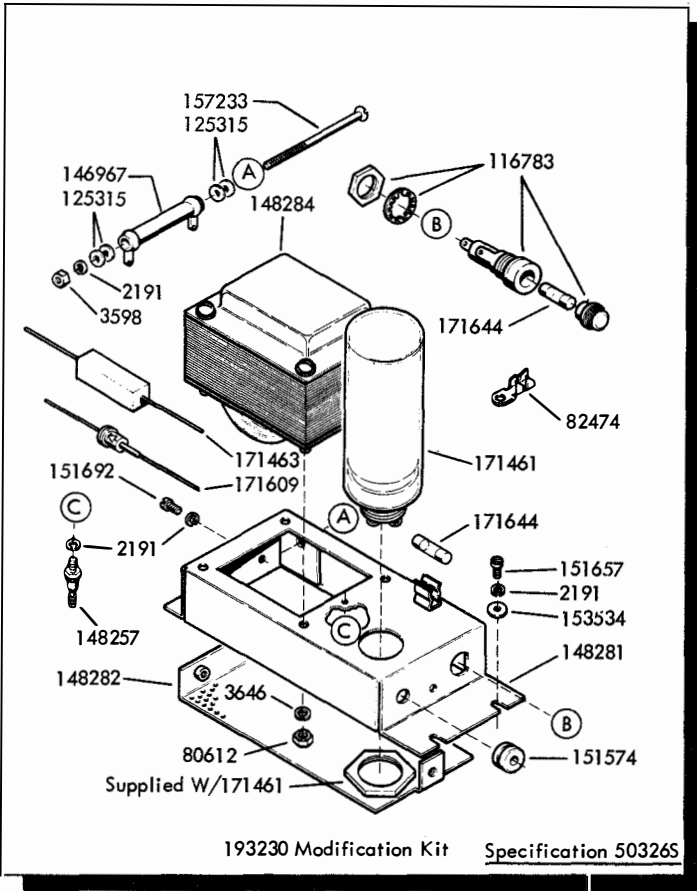
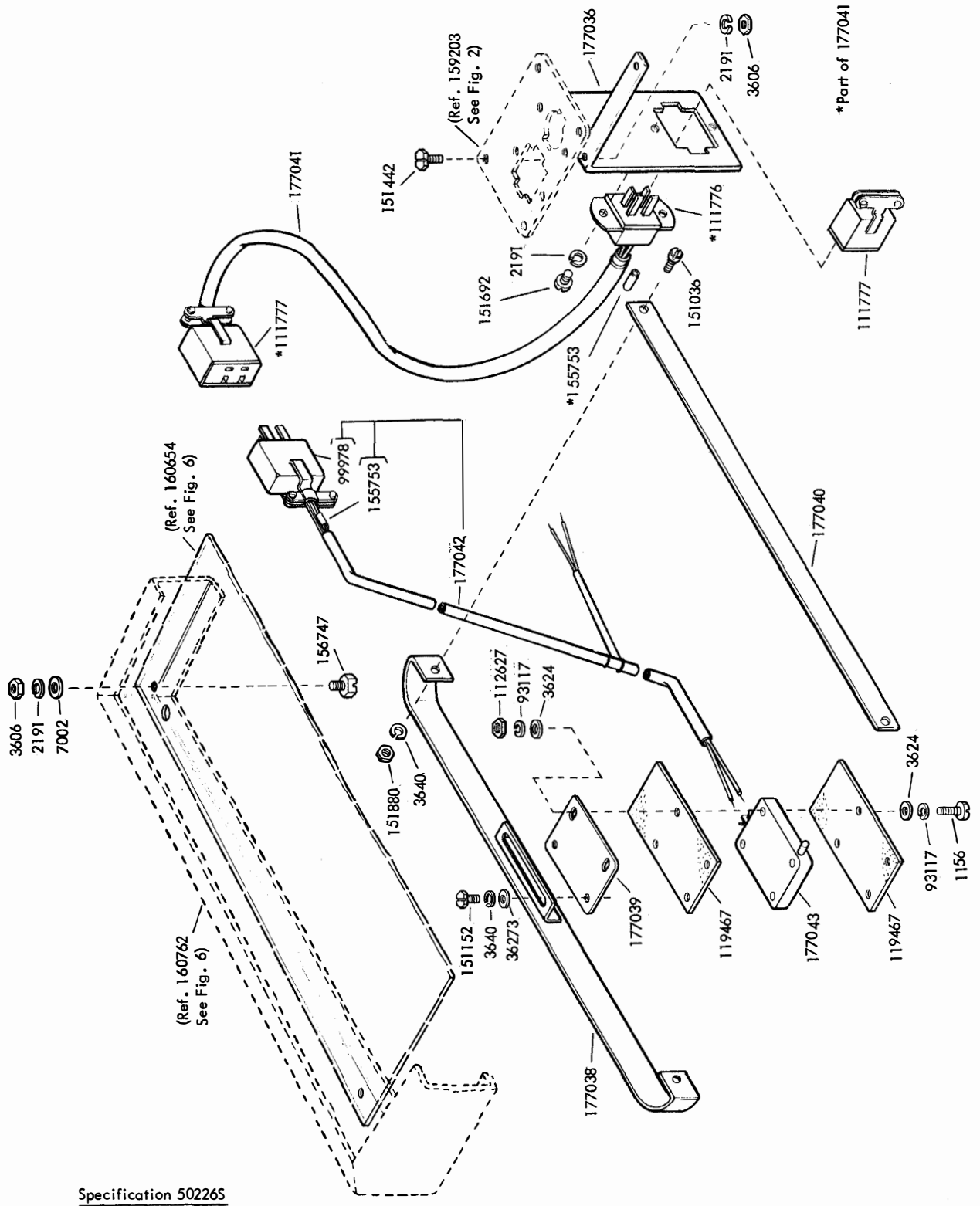


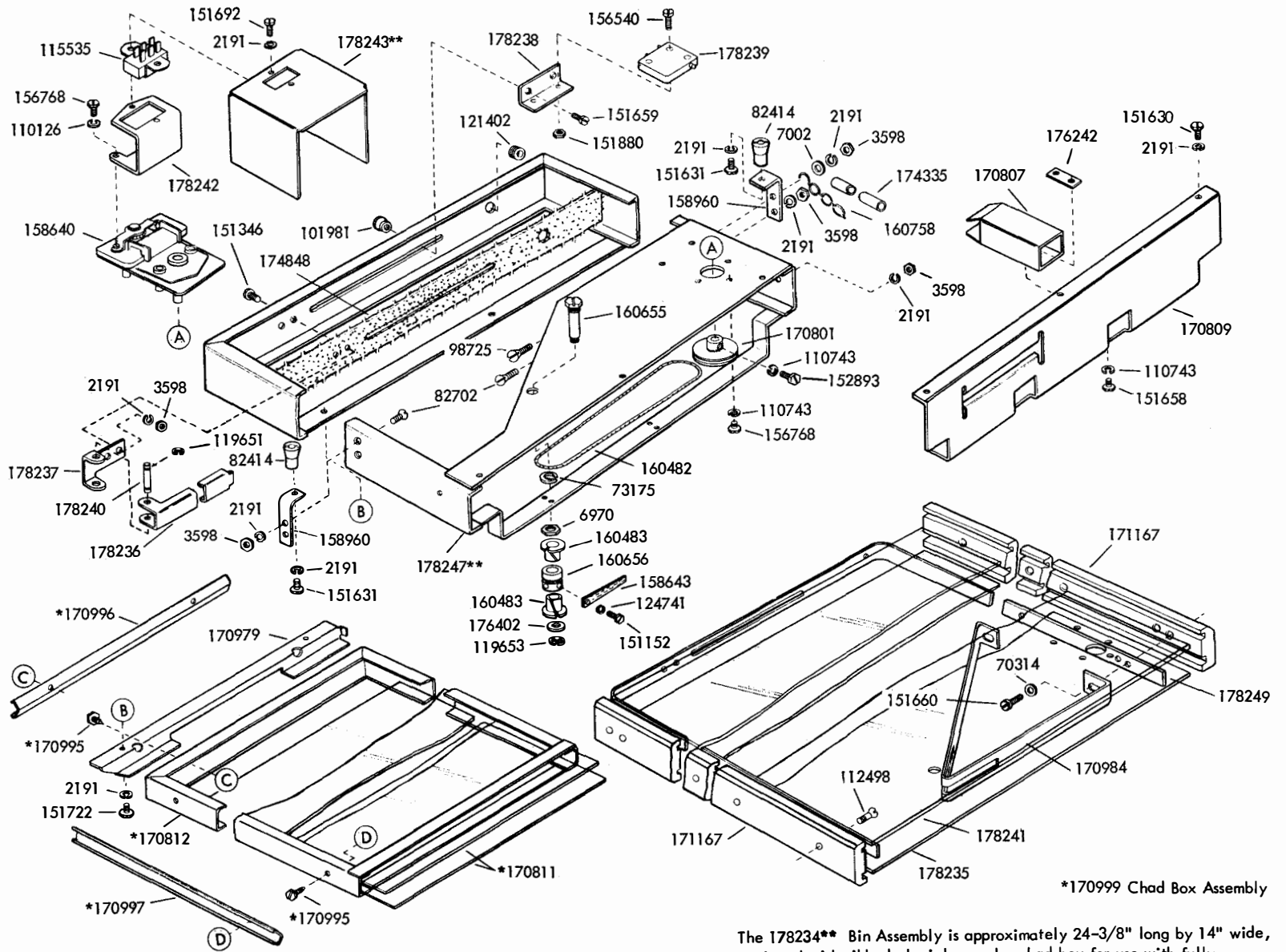
FIGURE 22. 174815 AND 193230 MODIFICATION KITS TO PROVIDE 48V POWER SUPPLY



Specification 502265

FIGURE 23. 177035 MODIFICATION KIT TO PROVIDE TAPE BIN LOW ALARM

FIGURE 24. 178234** TAPE STORAGE BIN ASSEMBLY (WITH MOTOR)



The 178234** Bin Assembly is approximately 24-3/8" long by 14" wide, equipped with ribbed plexiglass and a chad box for use with fully perforated tape.

**Refer to page 1 for finish suffix

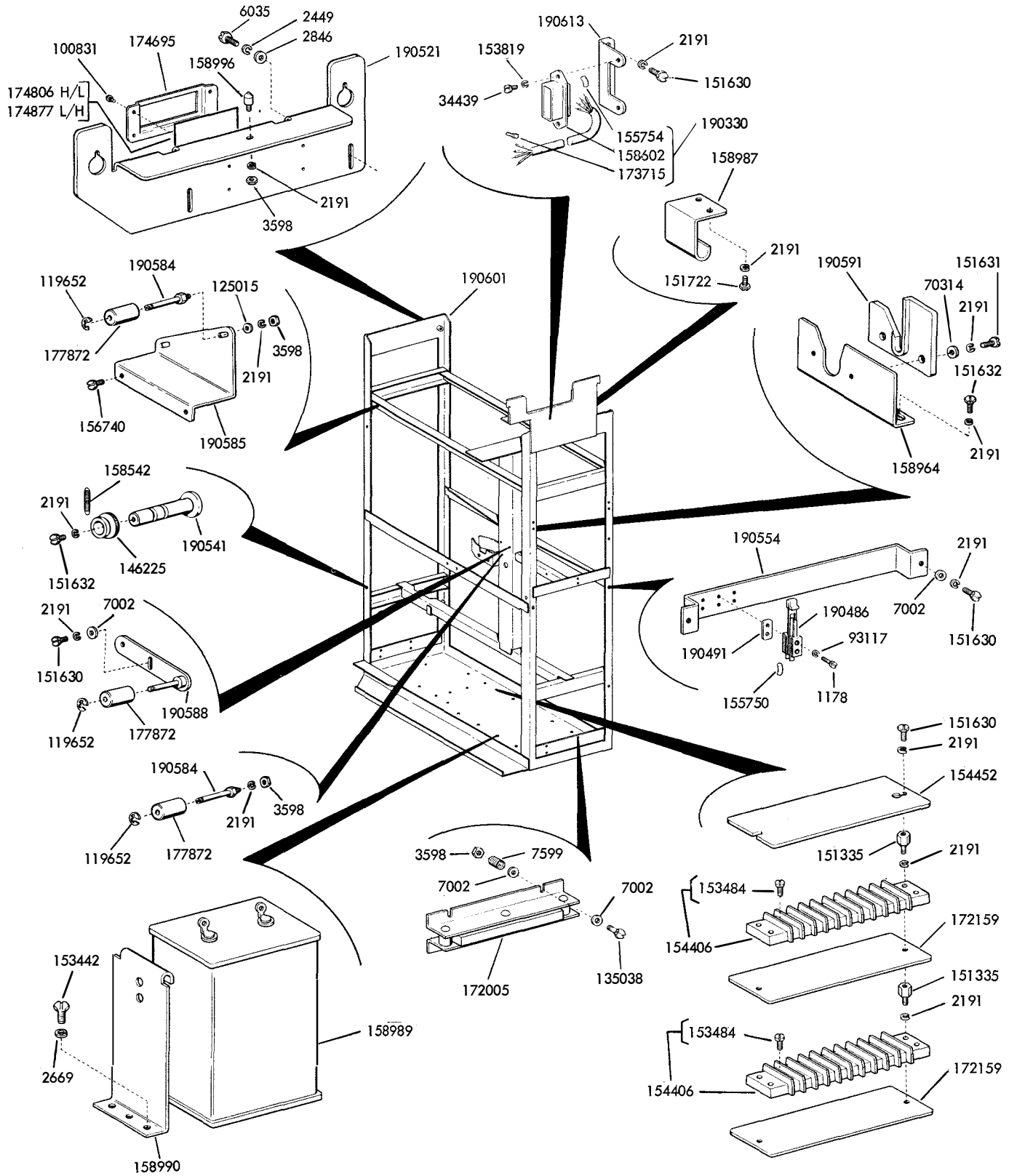


FIGURE 25. FRAME MECHANISM

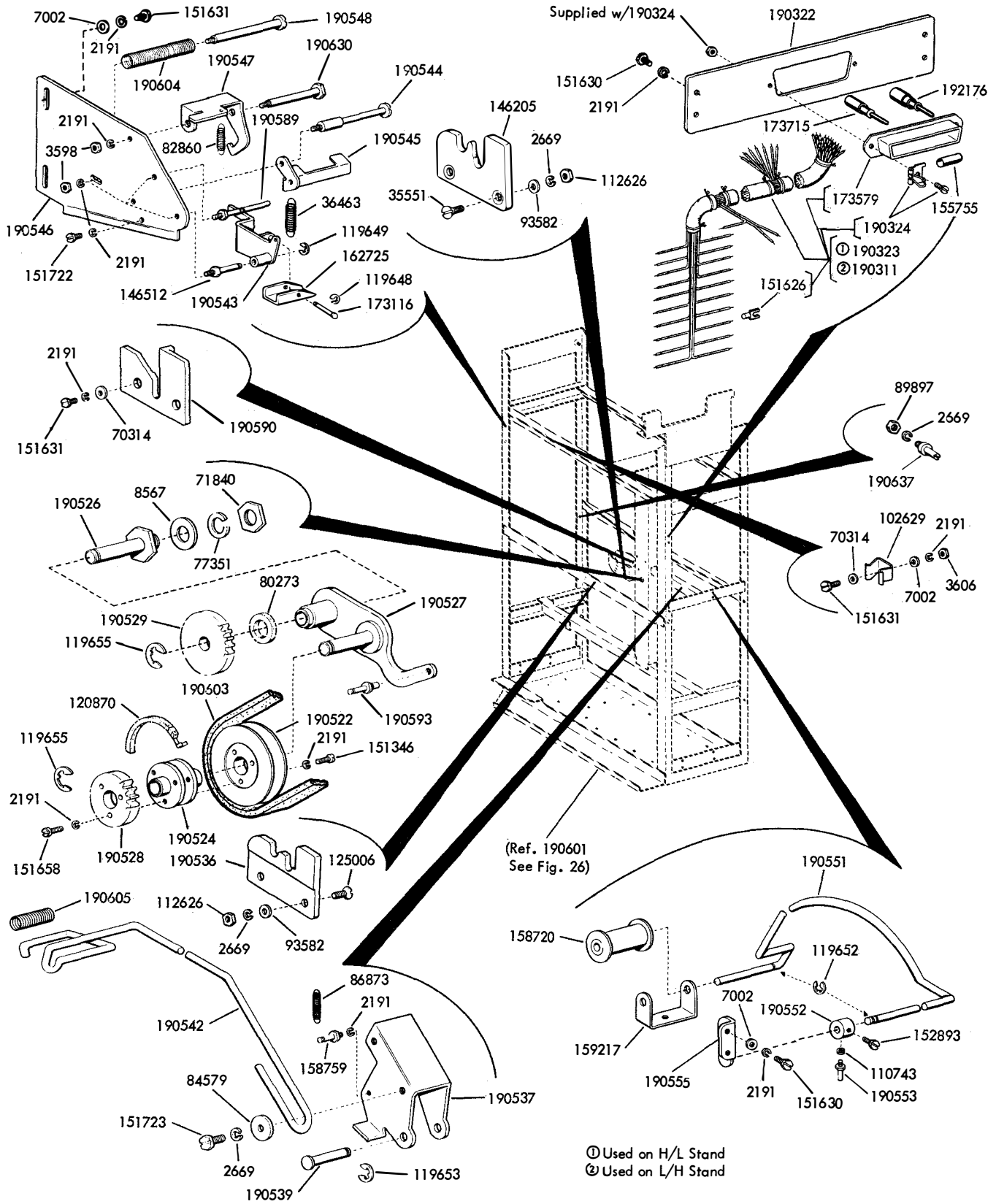


FIGURE 26. FRAME MECHANISM (Continued)

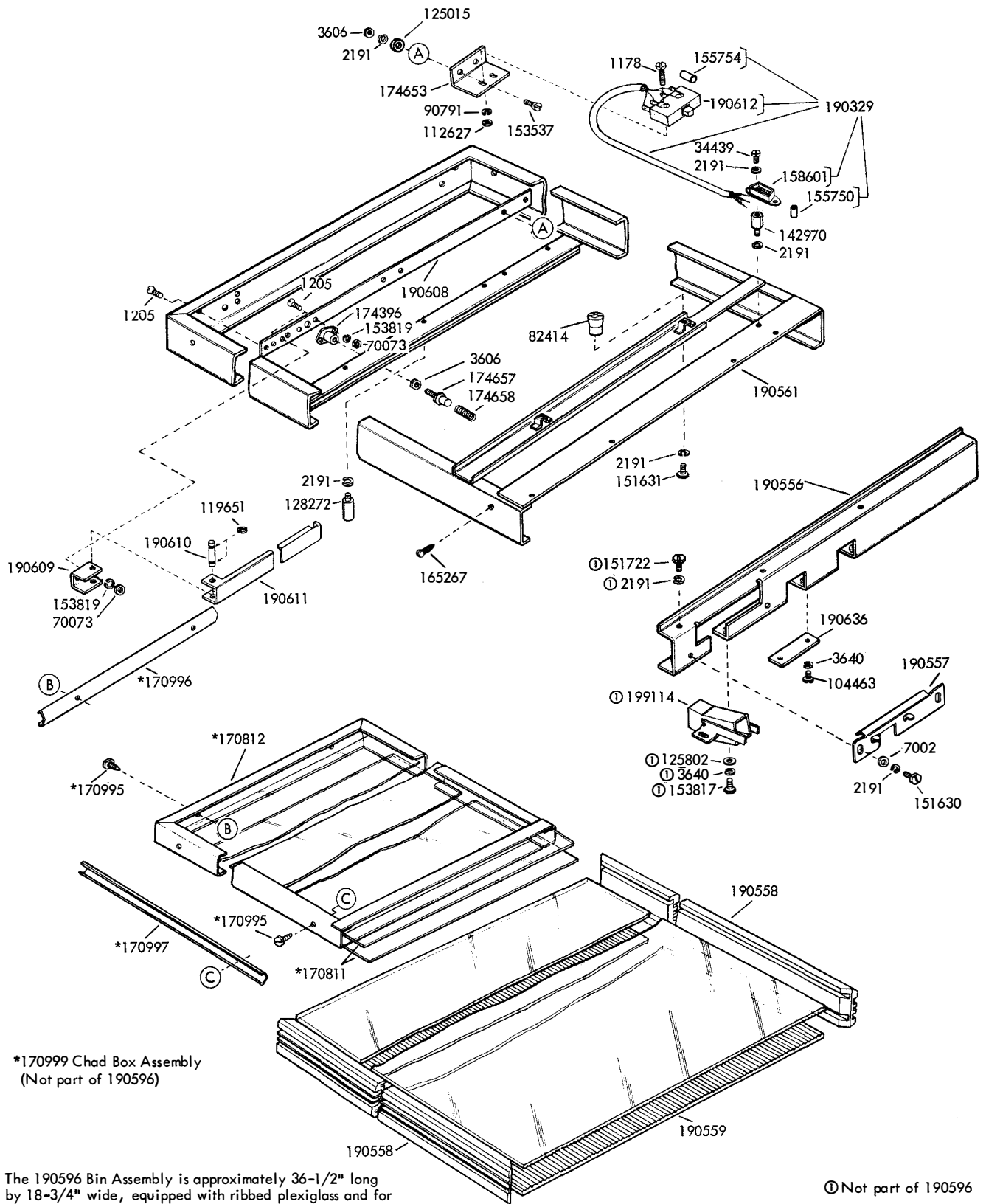


FIGURE 27. 190596 TAPE STORAGE BIN ASSEMBLY

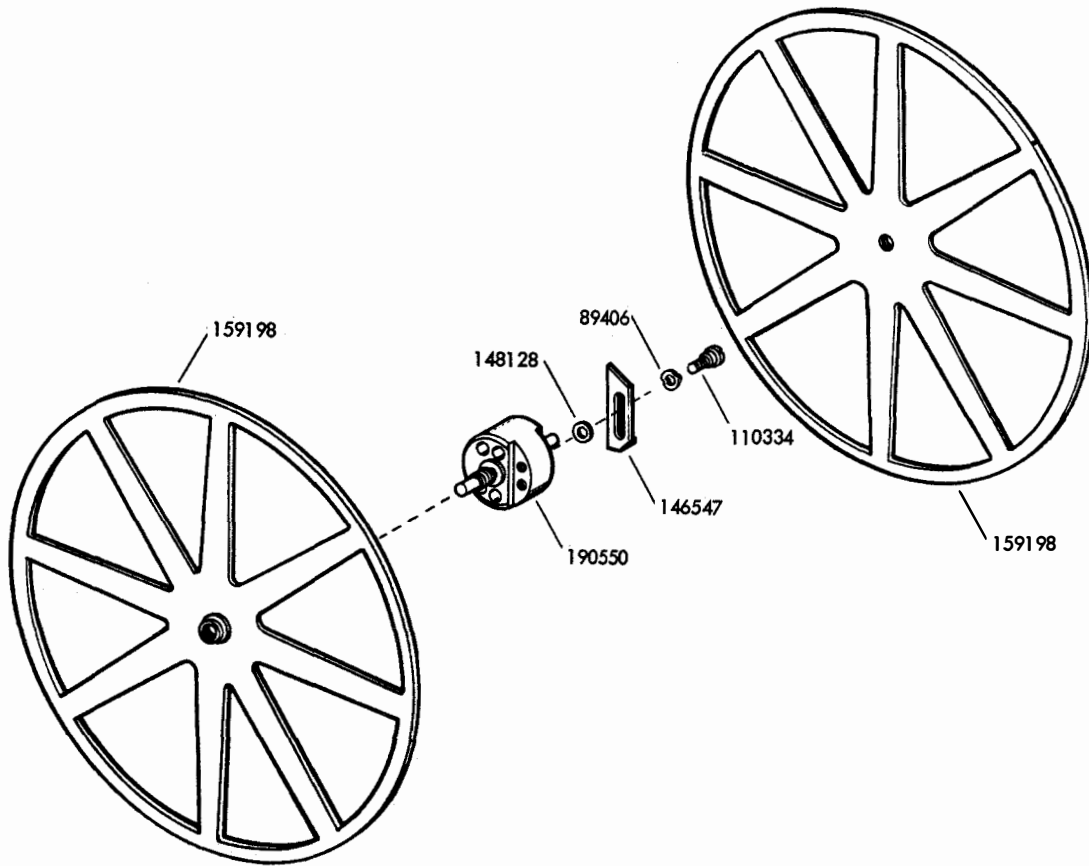


FIGURE 28. 190594 TAPE SUPPLY REEL ASSEMBLY

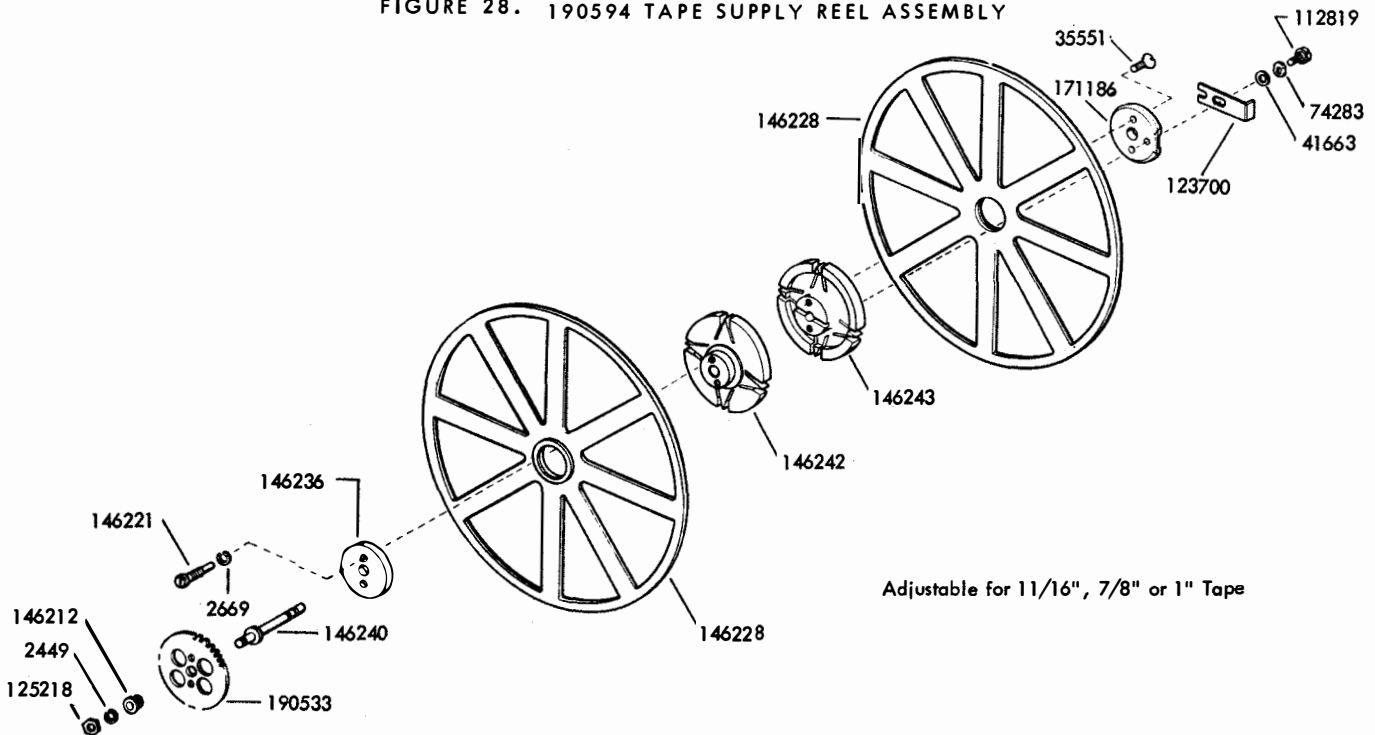


FIGURE 29. 190595 TAPE WINDER REEL ASSEMBLY

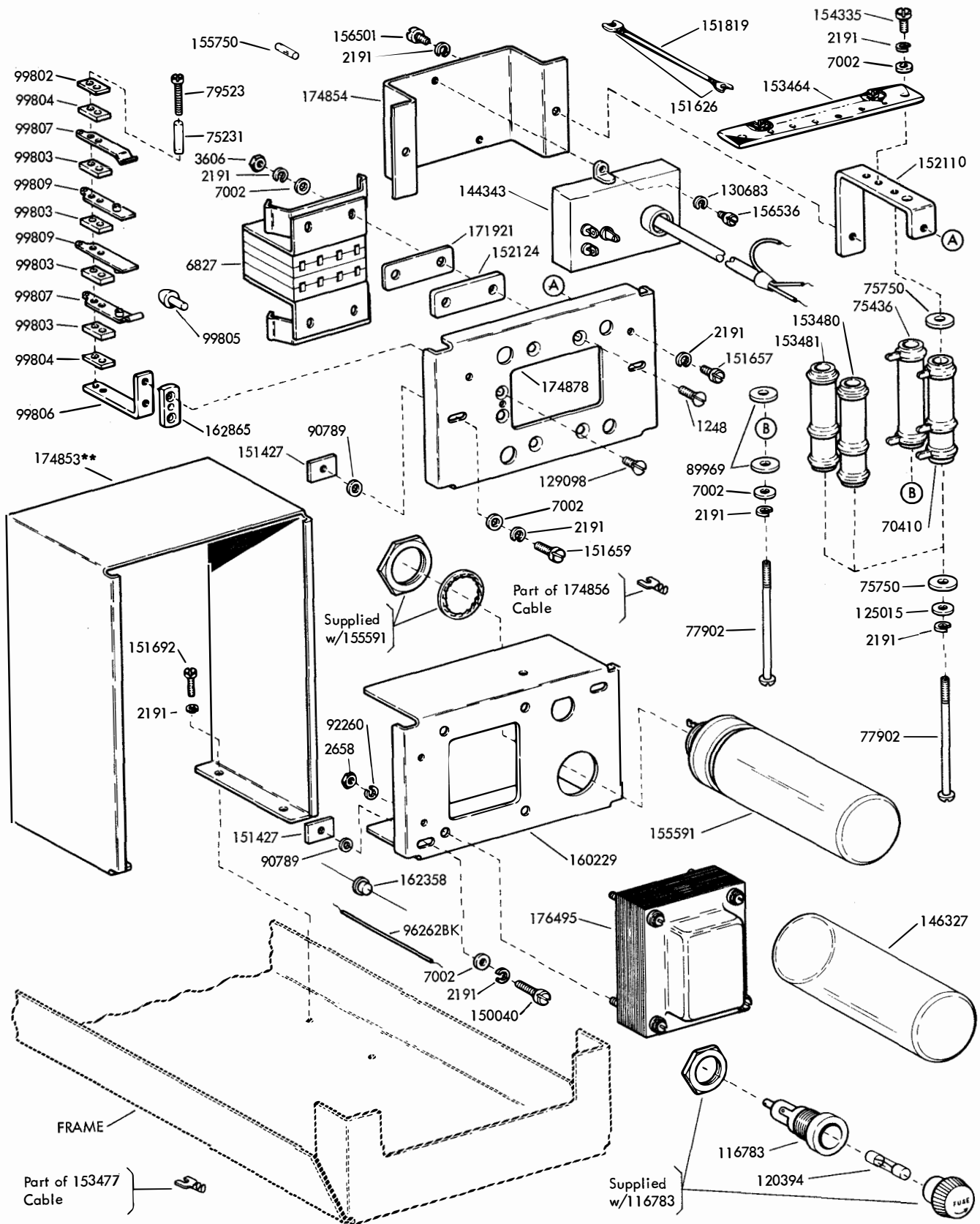
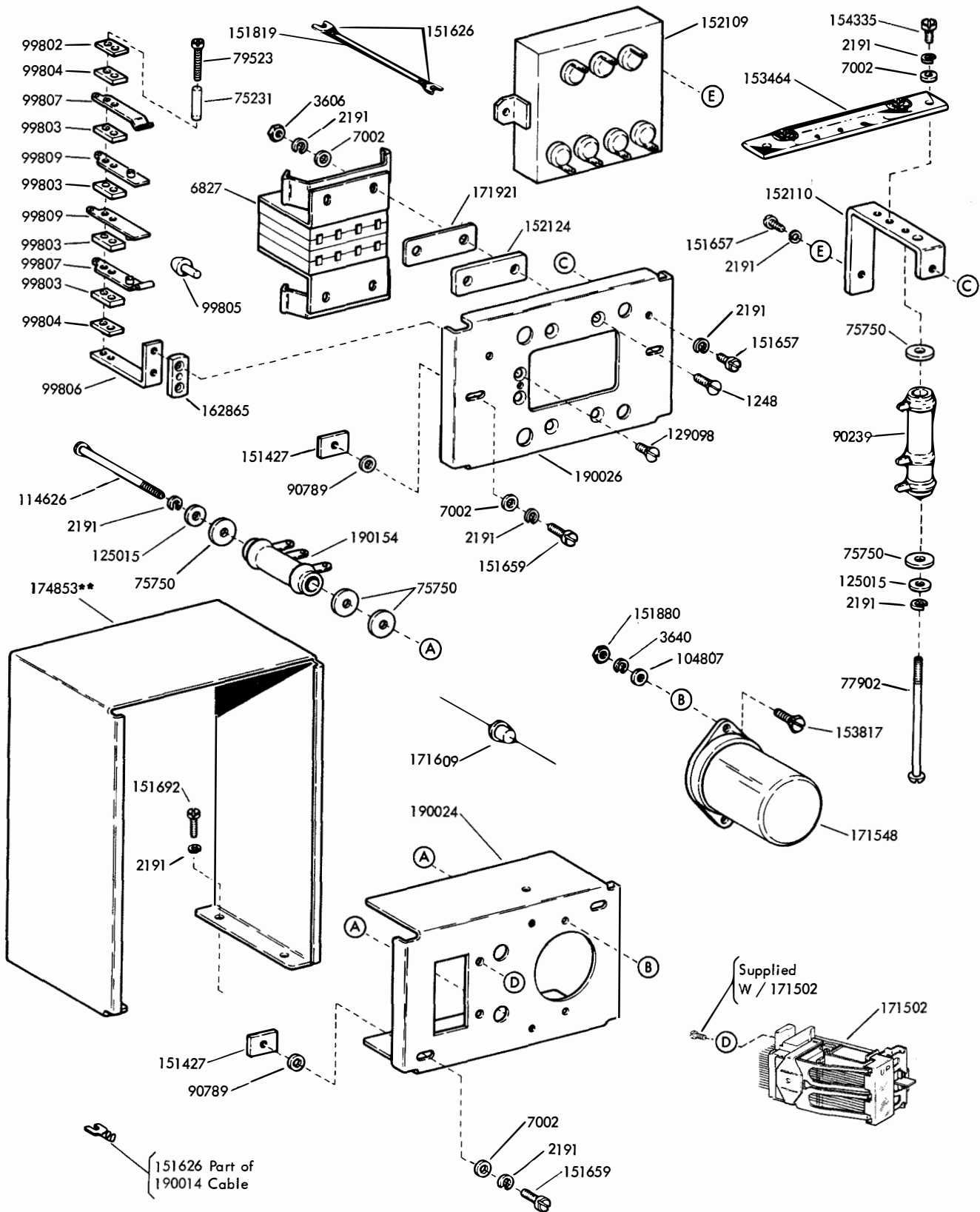
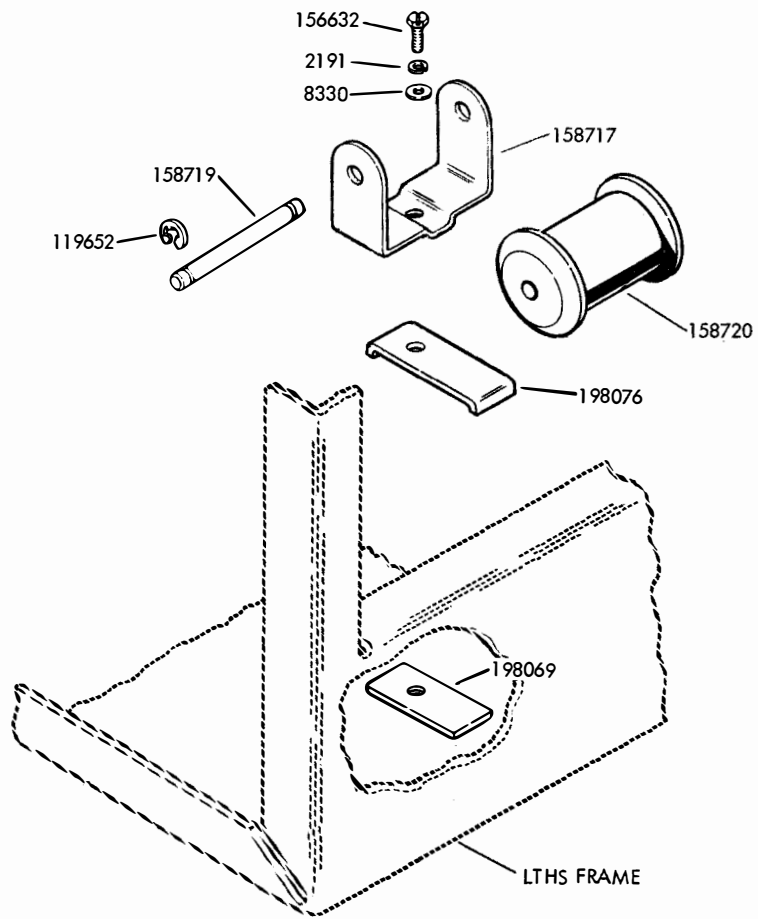


FIGURE 30. 174855** LINE RELAY MODIFICATION KIT



**Refer to page 1 for finish suffix

FIGURE 31. 190011** OPEN LINE AND BUSY LINE MODIFICATION KIT



Specification 50260S

FIGURE 32. 194169 MODIFICATION KIT TO PROVIDE A RIGID TAPE PATH

NUMERICAL INDEX

Part Number	Description and Page Number	Part Number	Description and Page Number	Part Number	Description and Page Number
1046	Screw, Shoulder (6-40) 10	76450	Shim (.028" Thk) 6	110126	Washer, Lock 8, 16, 26
1156	Screw (2-56 x 9/16 Fil) 25	76461	Washer, Flat 18, 20	110334	Screw, Shoulder (4-40) 30
1178	Screw (2-56 x 7/16 Fil) 23, 27, 29	76474	Nut (10-32 Hex) 5, 17, 20, 23	110743	Washer, Lock 4, 8, 15, 16, 23, 26, 28
1189	Screw, Shoulder (6-40) 15	77140	Nut (9/16-32 Hex) 6	111085	Spring, Contact 14
1205	Screw (3-48 x 19/64 Flat) 23, 29	77351	Washer, Lock 28	111086	Spring, Contact 14
1248	Screw (6-40 x 1/2 Flat) 31, 32	77902	Screw (6-40 x 2-3/8 Rd) 31, 32	111776	Connector, Plug (4 Pt) 4, 25
2191	Washer, Lock 3 to 10, 13 to 29, 31, 32, 33	79523	Screw (2-56 x 25/32 Fil) 31, 32	111777	Connector, Receptacle (4 Pt) 25
2199	Nut (7/16-32 Hex) 7	80273	Washer, Felt 28	112498	Screw (6-40 x 3/4 Flat) 8, 9, 16, 26
2449	Washer, Lock 11, 27, 30	80334	Terminal, Contact 14	112620	Screw (4-40 x 1/2 Hex) 4
2658	Nut (6-32 Hex) 31	80612	Nut (8-32 Hex) 24	112626	Nut (10-32 Hex) 7, 17, 20, 28
2669	Washer, Lock 3 to 7, 10, 11, 17 to 20, 27, 28, 30	80755	Bushing, Insulating 14	112627	Nut (2-56 Hex) 23, 25, 29
2846	Washer, Flat 27	82414	Knob, Detent 8, 9, 16, 26, 29	112819	Screw, Shoulder (6-40) 12, 30
3438	Washer, Flat 5, 7, 17, 18	82474	Terminal 24	114626	Screw (6-40 x 2-1/16 Fil) 32
3598	Nut (6-40 Hex) 3 to 6, 8, 9, 10, 14 to 18, 21, 22, 24, 26, 27, 28	82547	Insulator (.094" Thk) 14, 15	114859	Connector, Plug (21 Pt) 19
3599	Nut (4-40 Hex) 4, 14	82548	Insulator (.062" Thk) 14, 15	115535	Connector, Plug (6 Pt) 23, 26
3606	Nut (6-40 Hex) 3, 4, 15, 18, 20, 22, 23, 25, 28, 29, 31, 32	82702	Screw (6-40 x 9/32 Flat) 8, 9, 16, 26	116783	Holder, Fuse 15, 24, 31
3624	Washer, Flat 25	82860	Spring 28	118578	Clamp, Cable (3/4 ID) 24
3640	Washer, Lock 14, 15, 25, 29, 32	84040	Bushing, Insulating 15	118609	Holder, Fuse 15, 24
3646	Washer, Lock 24	84579	Washer, Flat 28	119467	Insulator (.032" Thk) 25
4814	Washer, Lock 6	84990	Screw (6-40 x 1/4 Flat) 23	119648	Ring, Retaining 28
6035	Screw (1/4-20 x 5/8 Hex) 27	85931	Post, Spring 6	119649	Ring, Retaining 10, 14, 28
6827	Block 31, 32	85935	Post, Spring 5, 6	119651	Ring, Retaining 23, 26, 29
6970	Nut (3/8-32 Hex) 16, 26	86873	Spring 28	119652	Ring, Retaining 3, 18, 22, 27, 28, 33
6994	Bearing, Ball 6	89406	Washer, Spring 30	119653	Ring, Retaining 8, 11, 16, 19, 26, 28
7002	Washer, Flat 3, 4, 5, 7, 8, 9, 13, 15 to 18, 20, 21, 22, 25 to 29, 31, 32	89897	Nut (10-32 Hex) 28	119655	Ring, Retaining 17, 20, 28
7599	Spring, Compression 27	89969	Washer, Insulating 31	120139	Fuse (1 Amp) 15
7825	Spring 6	89996	Screw (4-40 x 63/64 Fil) 15	120394	Fuse (.1 Amp) 31
8330	Washer, Flat 33	90033	Stiffener 14	120870	Wick, Felt 28
8567	Washer, Flat 28	90239	Resistor (3200 Ohm) 32	121243	Clamp, Cable (3/16 ID) 3, 4
34432	Washer, Flat 10	90480	Nut, Capstan (9/16-32) 6	121244	Clamp, Cable (1/4 ID) 4
34439	Screw (3-48 x 17/64 Fil) 27, 29	90504	Washer, Felt 17, 20	121246	Clamp, Cable (3/8 ID) 4
35551	Screw (10-32 x 3/8 Flat) 5, 12, 28, 30	90511	Screw (6-40 x 13/16 Hex) 8, 14	121247	Clamp, Cable (7/16 ID) 15, 21
36273	Washer, Flat 25	90789	Washer, Flat 31, 32	121402	Grommet, Rubber 26
36463	Spring 28	90791	Washer, Lock 22, 23, 29	123699	Screw, Shoulder (6-40) 11
41663	Washer, Flat 11, 12, 30	92260	Washer, Lock 31	123700	Plate, Locking 11, 12, 30
41732	Plate, Clamp 4, 14, 15	93117	Washer, Lock 25, 27	123701	Guard, Pinion 6
41974	Spring 5	93582	Washer, Flat 6, 17, 28	124741	Washer, Lock 8, 16, 26
55010	Screw, Shoulder (10-32) 6	96262BK	Jumper (4" Black) 31	125006	Screw (10-32 x 5/8 Flat) 11, 28
70073	Nut (3-48 Hex) 23, 29	98203	Gear (144 T) 11	125011	Washer, Flat 23
70314	Washer, Flat 4, 6, 7, 8, 14, 16, 17, 26, 27, 28	98209	Pinion (10 T) 6	125015	Washer, Flat 6, 17, 18, 27, 29, 31, 32
70410	Resistor (1000 Ohm) 31	98222	Shaft, Clutch 6	125120	Screw, Shoulder (6-40) 7
70497	Nut (5/16-32 Hex) 6	98223	Cam, Stop 6	125181	Screw (2-56 x 3/8 Fil) 22
71840	Nut (7/16-32 Hex) 28	99712	Screw (10-32 x 5/16 Hex) 17	125218	Nut (1/4-32 Hex) 11, 12, 30
72088	Screw (6-40 x 1-1/16 Hex) 15, 17	98725	Screw (6-40 x 3/8 Flat) 8, 16, 26	125245	Spring, Compression 11
72468	Spring 5	98832	Screw (4-40 x 11/16 Fil) 14	125315	Washer, Insulating 24
73175	Washer, Lock 8, 16, 26	99802	Plate 31, 32	125802	Washer, Flat 14, 29
74011	Screw, Shoulder (6-40) 21	99803	Insulator (.094" Thk) 31, 32	126901	Plate, Inner 5
74283	Washer, Spring 11, 12, 30	99804	Insulator (.062" Thk) 31, 32	126902	Plate, Outer 5
74728	Terminal, Contact 15	99805	Plunger 31, 32	126912	Lever, Stop 7
74754	Spring, Detent 15	99806	Bracket 31, 32	126914	Guide, Stop Lever 5
75231	Bushing, Insulating 31, 32	99807	Spring, Contact 31, 32	126915	Block 6
75436	Resistor (3000 Ohm) 31	99809	Spring, Contact 31, 32	126916	Arm, Release 6
75750	Washer, Insulating 31, 32	99978	Connector, Plug (4 Pt) 25	126917	Block, Mounting 5
76086	Washer, Spring 6	100658	Connector, Plug (2 Pt) 14, 21	126918	Disk, Tape Reel 11
76395	Disk, Friction 6	100831	Screw, Drive 27	126920	Spring, Friction 11
76396	Washer, Felt 6	101633	Washer, Flat 17, 20	126924	Knob, Tape Reel 11
		101981	Nut, Thumb (6-40) 26	128272	Pin 29
		102017	Washer, Beveled 11, 12	129098	Screw (6-40 x 11/32 Flat) 31, 32
		102212	Plate, Inner Bearing 5	130683	Washer, Lock 31
		102213	Plate, Outer Bearing 5	131301	Washer, Lock 7
		102214	Screw (6-40 x 13/64 Flat) 5	135038	Screw (6-40 x 9/16 Hex) 27
		102629	Spring, Detent 3, 28	139335	Connector, Plug (6 Pt) 15, 24
		104302	Pin 11		
		104444	Spacer (.751" Thk) 15		
		104463	Screw (4-40 x 1/4 Hex) 29		
		104807	Washer, Flat 32		

NUMERICAL INDEX (Continued)

Part Number	Description and Page Number	Part Number	Description and Page Number	Part Number	Description and Page Number
139380	Connector, Receptacle (6 Pt) 24	151880	Nut (4-40 Hex) 25, 26, 32	158759	Post, Spring 28
142970	Post 29	151982	Lamp, Incandescent (6 V) 21	158952	Channel, Mounting 9
144343	Filter, RF 31	152109	Filter 32	158955	Panel, Glass 8, 9, 16
146205	Bearing, Left 28	152110	Bracket, Resistor Mounting 31, 32	158957	Strip, Retaining 9
146212	Hub 30			158958	Pad, Felt 8, 9, 16
146221	Screw (10-32 Spl) 30	152124	Spacer 31, 32	158959	Liner 9
146225	Collar 27	152441	Washer, Flat 5, 10	158960	Bracket 8, 9, 16, 26
146228	Reel, Tape 30	152893	Screw (4-40 x 1/4 Hex) 8, 15, 16, 26, 28	158962	Bracket, Front 3
146236	Spacer 30			158963	Bracket, Rear 3
146240	Shaft, Tape Reel 30	153442	Screw (10-32 x 1/2 Hex) 4, 19, 27	158964	Bracket, Bearing 4, 20, 27
146242	Core, Left Tape 30			158966	Plate, Bearing 4, 6, 17
146243	Core, Right Tape 30	153464	Block, Terminal 31, 32	158967	Stud 5, 17
146327	Insulator 31	153477	Cable w/Terminals 31	158968	Stud 5
146512	Post 28	153480	Resistor (6,750 Ohm) 31	158969	Bracket 3
146547	Latch, Core 30	153481	Resistor (5,800 Ohm) 31	158972	Bracket 7
146967	Resistor (750 Ohm) 24	153484	Screw (6-32 Spl) 27	158973	Depressor, Chad 5
148128	Washer, Flat 30	153492	Connector, Plug (3 Pt) 8, 16	158974	Shaft 7
148257	Terminal, Insulated 24	153534	Washer, Flat 24	158975	Hub, Gear 7
148281	Cover, Rectifier 24	153537	Screw (6-40 x 9/32 Fil) 20, 23, 29	158976	Block, Mounting 5
148282	Cover, Base Plate 24			158977	Block, Mounting 5
148284	Transformer 24	153538	Screw (6-40 x 7/16 Hex) 4	158978	Bracket 5
150040	Screw (6-40 x 5/8 Fil) 31	153577	Washer, Felt 7	158979	Pulley 7
150536	Spring 12	153631	Network, Spark Suppression 15	158980	Bearing 7
150990	Washer, Felt 7	153817	Screw (4-40 x 3/8 Hex) 29, 32	158981	Gear (144 T) 7
151036	Screw, Shoulder (4-40) 25	153819	Washer, Lock 23, 27, 29	158983	Bracket, Mounting 7
151152	Screw (4-40 x 3/16 Hex) 4, 8, 16, 25, 26	153839	Screw (6-40 x 5/8 Hex) 4, 17, 18	158984	Arm, Tape 6
				158985	Arm, Tape 3
151335	Stud 19, 27	153841	Screw (6-40 x 9/16 Hex) 17	158986	Bracket, Clutch Bearing 5
151346	Screw (6-40 x 3/8 Fil) 26, 28	154335	Screw (6-40 x 9/32 Fil) 31, 32	158987	Bracket 3, 27
151427	Plate, Clamp 31, 32	154406	Block, Terminal 19, 27	158988	Bracket, Mounting 5
151442	Screw (6-40 x 1/2 Hex) 3, 5, 22, 25	154452	Cover 19, 27	158989	Capacitor (20 mfd) 3, 19, 27
		155591	Capacitor (220 mfd) 31	158990	Bracket, Mounting 3, 19, 27
151540	Lampholder 21	155750	Sleeve, Insulating (3/32 ID x 1/2" lg) 4, 15, 21, 22, 23, 27, 29, 31	158991	Capacitor (15 mfd) 4
151574	Grommet, Rubber 21, 24			158992	Bracket, Mounting 4
151606	Screw (10-32 x 1/4 Hex) 5	155751	Sleeve, Insulating (1/8 ID x 1" lg) 15	158995	Bracket, Mounting 4
151610	Washer, Flat 20	155752	Sleeve, Insulating (5/16 ID x 1/2" lg) 19, 23	158996	Stud 3, 27
151626	Terminal 19, 22, 28, 31, 32	155753	Sleeve, Insulating (1/8 ID x 1/2" lg) 4, 22, 25	158997	Belt, Drive 7, 17
151630	Screw (6-40 x 1/4 Hex) 3, 4, 5, 8, 15, 16, 17, 19, 20, 21, 23, 26 to 29	155754	Sleeve, Insulating (1/16 ID x 1/2" lg) 23, 27, 29	158998	Retainer, Speed Nut 3
		155755	Sleeve, Insulating (11/64 ID x 5/8" lg) 4, 14, 19, 28	158999	Post, Spring 5
151631	Screw (6-40 x 5/16 Hex) 3, 4, 6 to 9, 13, 16, 17, 18, 20 to 23, 26, 27, 28, 29	156226	Hub 17	159198	Retainer, Tape 11, 30
		156501	Screw (6-40 x 7/32 Fil) 31	159199	Gear (144 T) 6
151632	Screw (6-40 x 3/8 Hex) 3, 4, 5, 15, 17, 18, 20, 27	156536	Screw (4-40 x 1/8 Fil) 31	159200**	Frame, Tape Handling 3
		156540	Screw, Eccentric (4-40) 26	159201	Core 11
151637	Screw (4-40 x 1/4 Fil) 15	156632	Screw (6-40 x 13/32 Hex) 33	159202**	Bin Assembly, Tape Storage 9
151639	Washer, Flat 17	156740	Screw (6-40 x 7/32 Hex) 27	159203	Bracket, Connector Mounting 4
151657	Screw (6-40 x 1/4 Fil) 19, 24, 31, 32	156747	Screw (6-40 x 19/64 Hex) 25	159204	Connector, Plug (2 Pt) 4, 22
		156768	Screw (8-32 x 9/32 Hex) 8, 16, 26	159205	Strip 10
151658	Screw (6-40 x 5/16 Fil) 4, 26, 28	156877	Washer, Felt 17	159206	Bracket 10
		157233	Screw (6-40 x 2-3/8 Flat) 24	159207	Shaft 10
151659	Screw (6-40 x 1/2 Fil) 26, 31, 32	158286	Transformer 21	159208	Strip 10
		158542	Spring 27	159209	Bail 10
151660	Screw (6-40 x 7/8 Fil) 16, 26	158601	Connector, Plug (14 Pt) 23, 29	159210	Bail 10
151685	Screw (4-40 x 5/16 Fil) 4, 16, 23	158602	Connector, Receptacle (14 Pt) 27	159211	Switch 4
		158640	Motor, Shaded Pole (115 V AC) 8, 16, 26	159212	Shield, Switch 4
151692	Screw (6-40 x 3/16 Fil) 4, 5, 6, 8, 16, 24, 25, 26, 31, 32	158643	Blade 8, 16, 26	159213	Bracket Switch 4, 15
		158717	Bracket 33	159214	Bracket, Support 7
151693	Screw (6-40 x 9/16 Fil) 4, 7	158719	Shaft 22, 33	159215	Spacer (.078 Thk) 10
151721	Screw (6-40 x 3/4 Hex) 17, 20	158720	Roller 28, 33	159216	Bracket 3
151722	Screw (6-40 x 3/16 Hex) 3, 9, 14 to 17, 19, 22, 23, 26 to 29			159217	Bracket 3, 28
				159218	Latch Assembly 10
151723	Screw (10-32 x 3/8 Hex) 3, 4, 10, 28			159222	Reel Assembly, Tape 11
				159223	Reel Assembly, Tape 11
151724	Screw (10-32 x 5/8 Hex) 11			159225	Cable Assembly 4
151737	Screw (4-40 x 11/64 Hex) 14			159226	Cable Assembly 4
151819	Jumper (3" Black) 31, 32			159227	Core, Tape Reel 11
151827	Strap, Terminal 19			159228	Core, Tape Reel 11

**Refer to page 1 for finish suffix

NUMERICAL INDEX (Continued)

Part Number	Description and Page Number	Part Number	Description and Page Number	Part Number	Description and Page Number
159238	Connector, Receptacle (2 Pt) 4, 14, 21, 22	170828	Bar 17, 18	174340	Weight 17, 20
159841	Wrench, Allen 23	170829	Plate, Front 17	174396	Stripper 29
160191	Plate, Bearing 6	170830	Plate, Rear 18	174472	Modification Kit 21
160229	Plate, Mounting 31	170831	Guard 17	174473	Bracket 21
160471	Shaft 11	170833	Bracket, Clutch Bearing 17	174474	Cable Assembly 21
160472	Hub 11, 12	170835	Reel Assembly, Tape 12	174521	Bracket 23
160473	Block 11	170836	Bracket 18, 22	174569	Modification Kit 22
160474	Stud, Eccentric 5, 17	170873	Core, Tape Reel 12	174570	Switch 22
160475	Stud, Eccentric 7	170874	Bearing 12	174572	Bracket 22
160478**	Cover, Oil Shield 13	170875	Spacer 12	174576	Cable Assembly 19
160479	Grommet, Rubber 13	170876	Shaft 12	174578	Cable Assembly 22
160482	Belt 8, 16, 26	170877	Stud 12	174579	Cable Assembly 22
160483	Bearing, Nylon 8, 16, 26	170878**	Frame, Tape Handling 15	174581	Cable Assembly 23
160484	Bracket 8, 16	170880	Contact Assembly 15	174588	Actuator, Switch 22
160485**	Cover 8, 16	170881	Spring, Contact 15	174626**	Bin Assembly, Tape Storage 23
160652	Separator 8	170882	Spring, Contact 15	174627	Bracket Support 18
160654	Window, Rear Plastic 8, 16	170887	Spring, Contact 15	174628	Plate, Connector 19
160655	Shaft 8, 16, 26	170979	Bracket 16, 26	174629	Bracket, Plug 23
160656	Hub 8, 16, 26	170980**	Frame, Tape Bin 16	174652	Bracket, Base 23
160757	Connector, Receptacle (3 Pt) 4	170984	Separator 16, 26	174653	Bracket, Switch 23, 29
160758	Chain 8, 16, 26	170988	Cable Assembly 15	174654	Bail 23
160759	Liner 8	170995	Screw, Self-Tapping (#6) 16, 23, 26, 29	174655	Shaft 23
160760	Guard, Tape 8, 9	170996	Bracket, Retaining 16, 23, 26, 29	174656	Switch 23
160761	Channel, Mounting 8	170997	Bracket, Retaining 16, 23, 26, 29	174657	Stud 23, 29
160762**	Frame, Tape Storage 8, 9			174658	Spring, Compression 23, 29
160763**	Bin Assembly, Tape Storage 8	170999	Box Assembly, Chad 16, 23, 26	174695	Holder, Card 27
162358	Diode 31	171166	Liner 16	174705	Knob, Detent 23
162725	Depressor, Chad 28	171167	Channel, Mounting 16, 26	174806	Plate, H/L Name 27
162865	Spacer (.125 Thk) 31, 32	171178	Spacer (.250" Thk) 17	174815	Modification Kit 24
163481	Bracket, Switch 4	171179	Belt, Flat 17, 20	174816	Cable Assembly 24
163482	Bail, Winder Arm 4	171182	Reel, Tape 12	174848	Pad, Felt 26
163486	Arm, Winder 4	171186	Knob, Tape Reel 12, 30	174853**	Bracket, Mounting 31, 32
163706	Separator Assembly 8, 14	171461	Capacitor (900 mfd) 24	174854	Bracket, Mounting 31
163750	Contact Assembly 14	171462	Resistor (450 Ohm) 24	174855**	Modification Kit 31
163759	Separator 14	171463	Resistor (1 Ohm) 24	174856	Cable w/Terminal 31
163761	Shaft 14	171502	Relay 32	174877	Plate, L/H Name 27
163762	Arm, Sensing 14	171548	Capacitor (200-200 mfd) 32	174878	Plate, Relay Mounting 31
163763	Spring 14	171609	Diode 24, 32	174936	Nut, Anchor 23
163764	Bail, Mounting 14	171610	Transformer 24	174937**	Frame, Tape Bin 23
163981	Cable Assembly 4	171644	Fuse (1.5 Amp) 24	174938**	Guard, Tape 23
164596	Cable Assembly 8, 14	171651	Connector, Receptacle (6 Pt) 24	174939	Post 19
164597	Cable Assembly 4, 14	171921	Spacer (.065 Thk) 31, 32	174943	Channel, Mounting 23
164598**	Bin Assembly, Tape Storage 8	172005	Latch, Magnetic 27	174950**	Frame, Tape Handling 19
165267	Screw, Self-Tapping (10-32) 23, 29	172159	Insulator, Terminals (1-10) 19, 27	174953	Window, Plastic 23
170771	Plate 15	172260	Bracket 15	174973	Separator 23
170800**	Bin Assembly, Tape Storage 16	172261	Cover 15	176176	Modification Kit 20
170801	Hub 16, 26	172262	Bracket w/Posts 15	176177	Plate, Front 20
170807	Chute, Chad 16, 23, 26	172291	Screw, Shoulder (6-40) 17, 20	176178	Pulley 20
170809	Cover, Tape Bin 16, 26	172292	Plate, Inner Bearing 18, 20	176242	Plate, Nut 16, 23, 26
170811	Window, Plastic 16, 23, 26, 29	172293	Plate, Outer Bearing 17, 20	176402	Washer, Flat 8, 16, 26
170812	Box, Chad 16, 23, 26, 29	172294	Bushing, Shoulder 17	176423	Cable Assembly 4
170813	Pulley 2-3/4" 17	172681	Modification Kit 14	176495	Transformer, Power 31
170814	Pulley (2-3/4") 17	173116	Pin 28	176644	Gear (80 T) 12
170816	Pulley (2") 17	173342	Bail 14	176645	Gear (19 T) 17
170817	Lever 17, 20	173579	Connector, Plug (50 Pt) 19, 28	177035	Modification Kit 25
170818	Rod 17, 20	173715	Terminal, Plug Type 19, 27, 28	177036	Bracket, Connector 25
170819	Plate, Bearing 17	173718**	Bin Assembly, Tape Storage 16	177038	Bracket, Switch Plate 25
170820	Plate, Mounting 17, 20	173766	Hub 8, 16	177039	Plate, Switch 25
170821	Guide 17	173974	Screw (10-32 x 5/16 Hex) 5, 6, 7, 10, 17, 18	177040	Actuator, Spring 25
170822	Bracket 17	174335	Tubing 8, 16, 26	177041	Cable Assembly 25
170823	Shaft 17	174336	Reservoir 17	177042	Cable Assembly 25
170824	Stud 17, 20	174337	Holder 17	177043	Switch, Sensitive 25
170825	Bearing 17, 20	174338	Wick 17	177872	Roller 27
170826	Bracket, Support 18			178234**	Bin Assembly, Tape Storage 26
170827	Bracket 18			178235	Panel, Front 26
				178236	Lever, Arm 26
				178237	Bracket, Mounting 26

**Refer to page 1 for finish suffix

NUMERICAL INDEX (Continued)

Part Number	Description and Page Number	Part Number	Description and Page Number	Part Number	Description and Page Number
178238	Bracket, Switch 26	190522	Pulley (V) 28	190595	Reel Assembly, Tape Winder 30
178239	Switch 26	190524	Hub 28	190596	Bin Assembly, Tape Storage 29
178240	Stud 26	190526	Post 28	190601	Frame, Tape Handling 27
178241	Panel, Rear 26	190527	Lever w/Post 28	190603	Belt (V) 28
178242	Bracket 26	190528	Gear (34 T) 28	190604	Roller, Spring 28
178243**	Cover 26	190529	Gear (41 T) 28	190605	Roller, Spring 28
178247**	Frame, Tape Bin 26	190533	Gear (88 T) 30	190608	Bracket 29
178249	Liner 26	190536	Bearing, Right 28	190609	Bracket, Bail Mounting 29
179176	Liner 8	190537	Bail 28	190610	Shaft 29
179177	Channel, Mounting 8	190539	Shaft 28	190611	Bail 29
179178**	Frame, Tape Storage 8	190541	Post, Tape Guide 27	190612	Switch 23, 29
179181**	Bin Assembly, Tape Storage 8	190542	Arm, Tape 28	190613	Bracket, Connector Mounting 27
179204	Bracket w/Stud 20	190543	Lever w/Hub 28	190630	Post 28
179206	Bracket w/Stud 17, 20	190544	Post 28	190636	Strap 29
179208	Pulley w/Gear (19 T) 17, 20	190545	Guide, Tape 28	190637	Post 28
179209	Gear (19 T) 20	190546	Bracket 28	192176	Terminal, Plug Type 19, 28
179211	Gear (80 T) 12, 20	190547	Bail, Latch 28	193230	Modification Kit 24
179381**	Guard, Gear 13	190548	Post, Latch Bail 28	193661	Reservoir 17, 20
179395	Rod Assembly 20	190550	Core 30	193662	Holder, Wick 17, 20
179500	Plate 21	190551	Arm, Tape Brake 28	193663	Wick, Leather 17, 20
179746	Modification Kit 12, 17	190552	Collar 28	193940	Modification Kit 20
190011**	Modification Kit 32	190553	Post, Contact Operating 28	194169	Modification Kit 33
190014	Cable w/Terminals 32	190554	Bracket, Contact Mounting 27	194200	Bracket 22
190024	Plate, Mounting 32	190555	Bracket 28	194201	Arm, Tape 18, 22
190026	Plate, Relay 32	190556	Bracket 29	194426	Roller 3, 22
190154	Resistor (550 Ohm) 32	190557	Guide, Tape 29	197583**	Guard, Gear 13
190311	Cable Assembly 28	190558	Channel, Window 29	197985**	Shield, Oil 13
190322	Plate 19, 28	190559	Window, Plastic 29	197986	Guard, Tape 8
190323	Cable Assembly 19, 28	190561	Frame, Tape Storage 29	197987**	Bin Assembly, Tape Storage 8
190324	Latch Assembly 28	190584	Post 27	197988	Deflector, Tape 8
190327**	Bin, Tape Storage 23	190585	Brake, Roller Mounting 27	198069	Plate, Nut 33
190328**	Bin Assembly, Tape Storage 23	190588	Brake w/Post 27	198076	Bracket, Clamp 33
190329	Cable Assembly 23, 29	190589	Post, Spring 28	199114	Chute, Chad 29
190330	Cable Assembly 27	190590	Plate, Right Bearing 28	199824	Bracket, Stop 7
190486	Switch 27	190591	Plate, Left Bearing 27	304895	Separator 14
190491	Spacer (.042" Thk) 27	190593	Post, Spring 28	304896	Arm, Sensing 14
190521	Bracket, Front Mounting 27	190594	Reel Assembly, Tape Supply 30	304B98	Separator Assembly 8, 14

**Refer to page 1 for finish suffix

