

28 NON-TYPING REPERFORATOR (LRPE)

PARTS

UNIT DESCRIPTION	TELETYPE CODE	BELL SYSTEM CODE
Reperforator Transmitter Set (RT) Component	LRPE2 LRPE11	Part of 28B, 28C Part of 28G (RT Set Codes)
Automatic Send-Receive Set (ASR) Component	LRPE6	Part of 28F (Perforator Transmitter Base Code)
Nontyping Reperforator Set Component	LRPE16	28H
GEAR SETS		
60 WPM	159893	28N
60 WPM - Nylon	163023	28N-1
75 WPM	159890	28P
75 WPM - Nylon	163024	28P-1
100 WPM	159887	28R
100 WPM - Nylon	163025	28R-1
Note: The above Gear Sets are used for Perforator Transmitter Units.		

Note: When ordering parts from this section,
prefix each number with the letters TP.

FIGURE	CONTENTS	PAGE
1	Single Cycle Selector Clutch Mechanism	3
2	Two Cycle Selector Clutch Mechanism	4
3	Double Shaft Mechanism	5
4	Single Cycle Selector Mechanism	6
5	Two Cycle Selector Mechanism	7
6	Selector Magnet Mechanism	8
7	Main Plate Mechanism	9
8	Main Plate Mechanism (continued)	10
9	Front Punch Plate Mechanism	11
10	Rear Punch Plate Mechanism	12
11	Punch Block Assemblies	13
12	Punch Bail Mechanism	14
13	Rocker Bail Mechanism	15
14	159364 Modification Kit to add Manual Backspace Mechanism	16
15	Power Drive Backspace Mechanism	17
16	159379 (make only 5 level), 162273 (transfer 5 level) and 194066 (transfer 8 level) Modification Kits to Provide Code Reading Contacts	18
17	159381, 162271 and 194167 Modification Kits to Provide Auxiliary Timing Contacts	18
18	158946 Reperforator Transmitter Unit Cable Assembly	18
19	162379 and 163347 Modification Kits to Add Automatic Non-Interfering Letters Tape Feed Out	19
20	162380 (blank), 173443 (letters) and 176628 (letters) Modification Kits to Add Remote Control Non-Interfering Tape Feed Out	20
21	162379, 163347 (automatic letters) and 162380, 173443 and 176628 (remote control letters) Modification Kits to Add Non-Interfering Tape Feed Out	21
22	162379, 163347 (automatic), 162380 (blank), 173443 and 176628 (remote control letters) Modification Kits to Add Non-Interfering Tape Feed Out	22
23	Verifier Contact Mechanism to Verify Six Characters After Perforation	23
24	Verifier Contact Mechanism to Verify Six Characters After Perforation (continued)	24
25	Verifier Contact Block Mechanism	25
26	Early Design Shaft Mechanism for 5 Level Units	26
27	Early Design Tape Guide	27
28	Keyboard Reperforator Unit Cable Assembly	27
29	174439 (less cam), 176420 and 176421 (with cams) Modification Kits to Add Timing Contact Mechanism to 5 Level Single Cycle Units	28
30	Chad Chutes	29
	Numerical Index	30

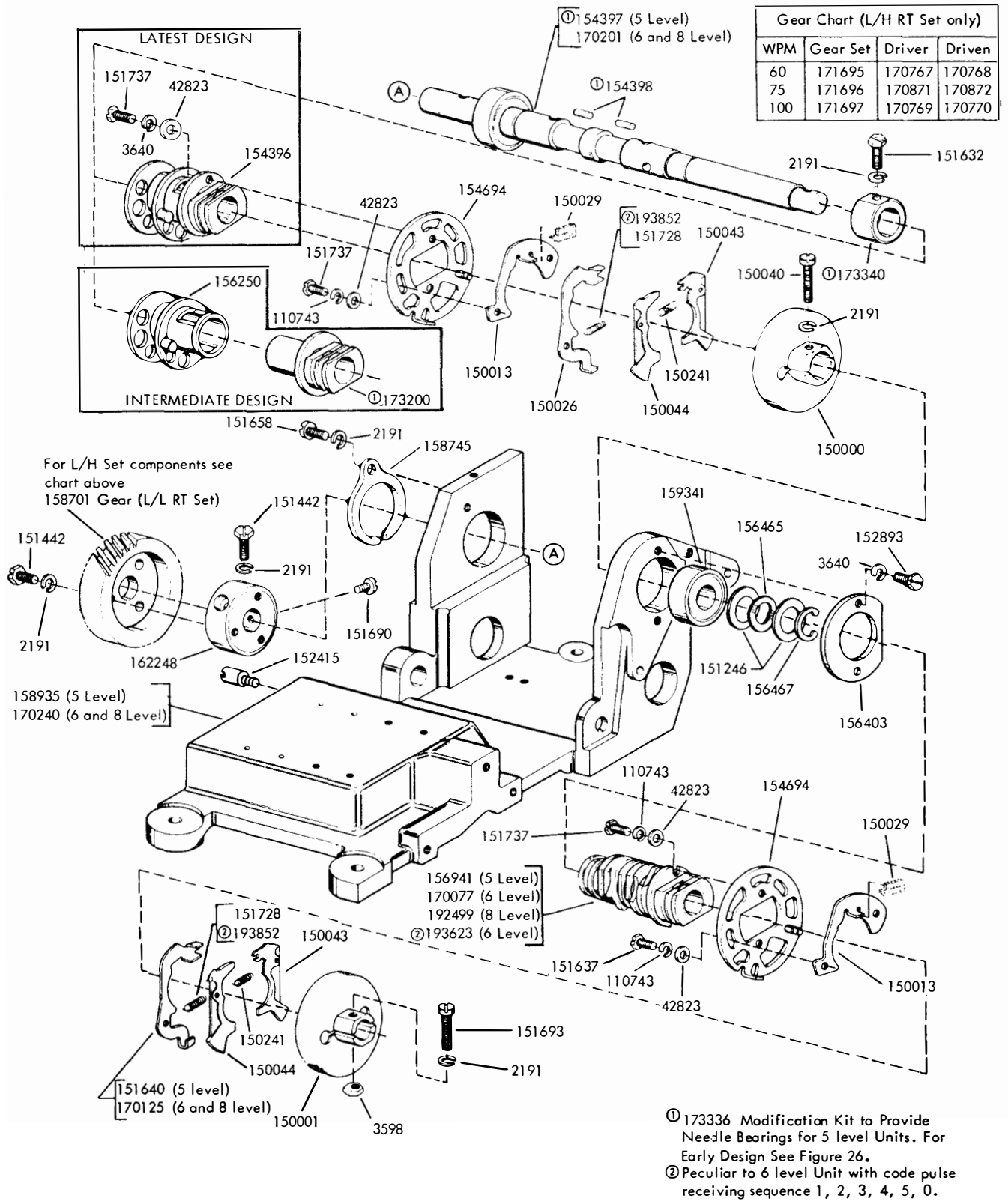


FIGURE 1. SINGLE CYCLE SELECTOR CLUTCH MECHANISM

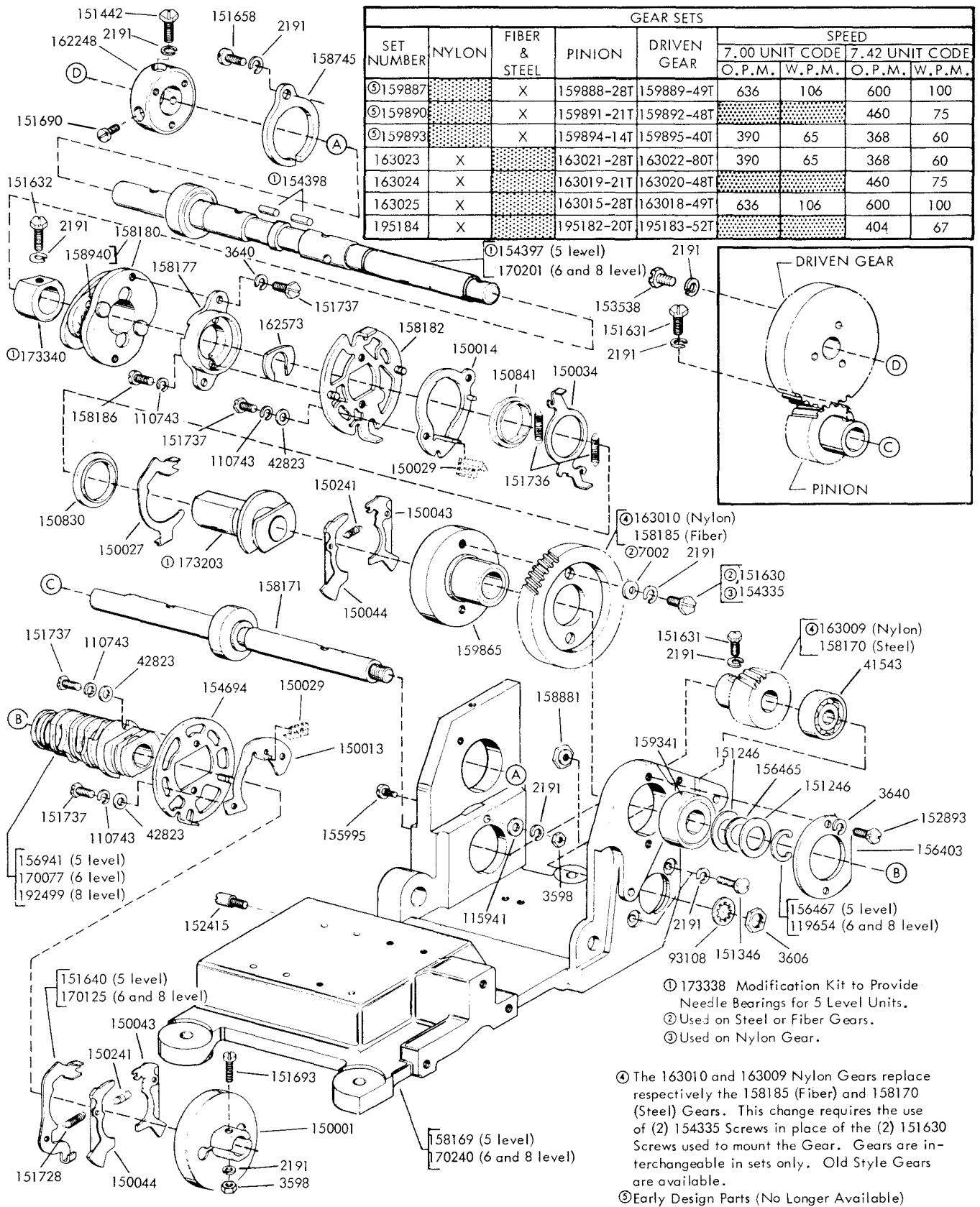


FIGURE 3. DOUBLE SHAFT MECHANISM

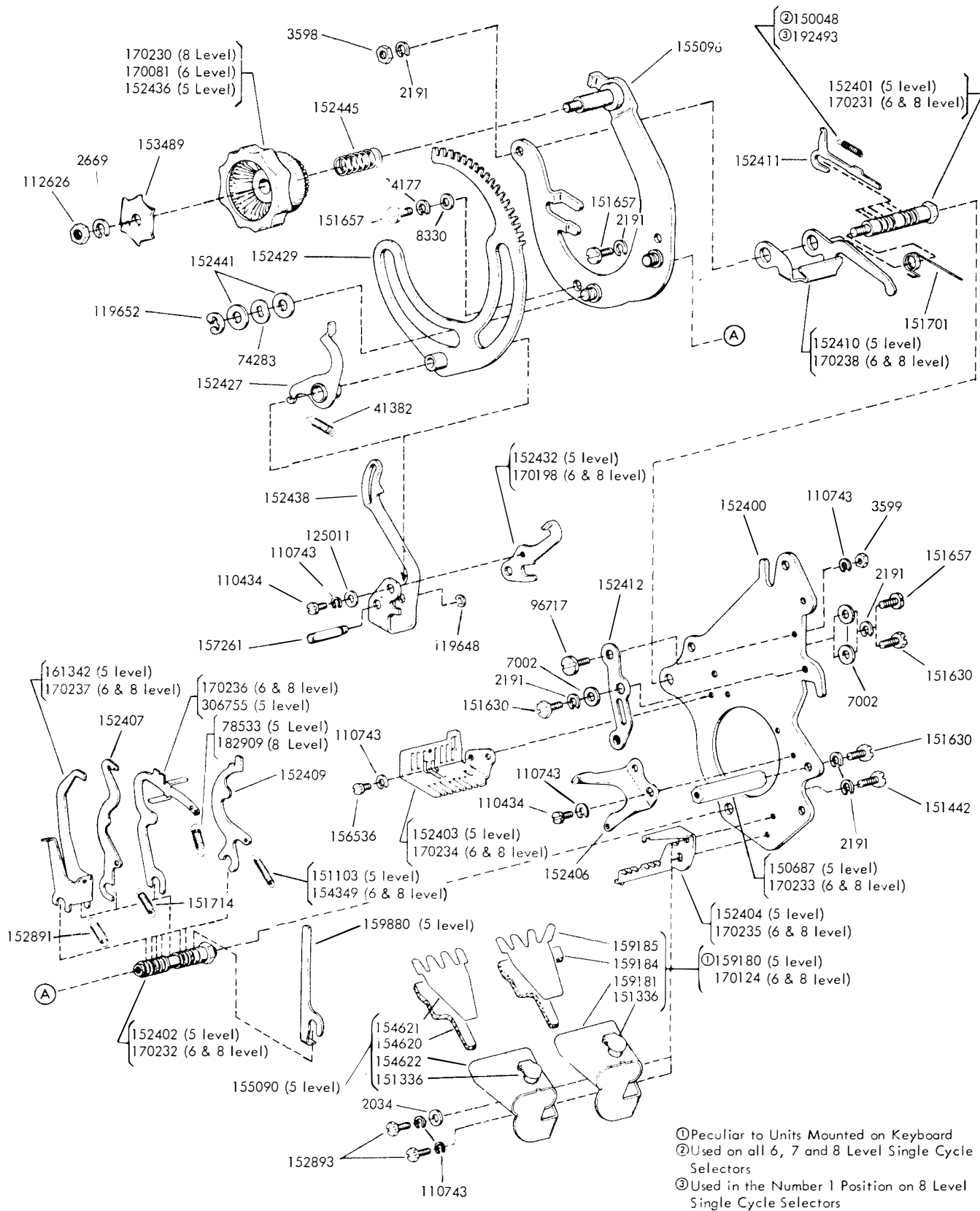


FIGURE 4. SINGLE CYCLE SELECTOR MECHANISM

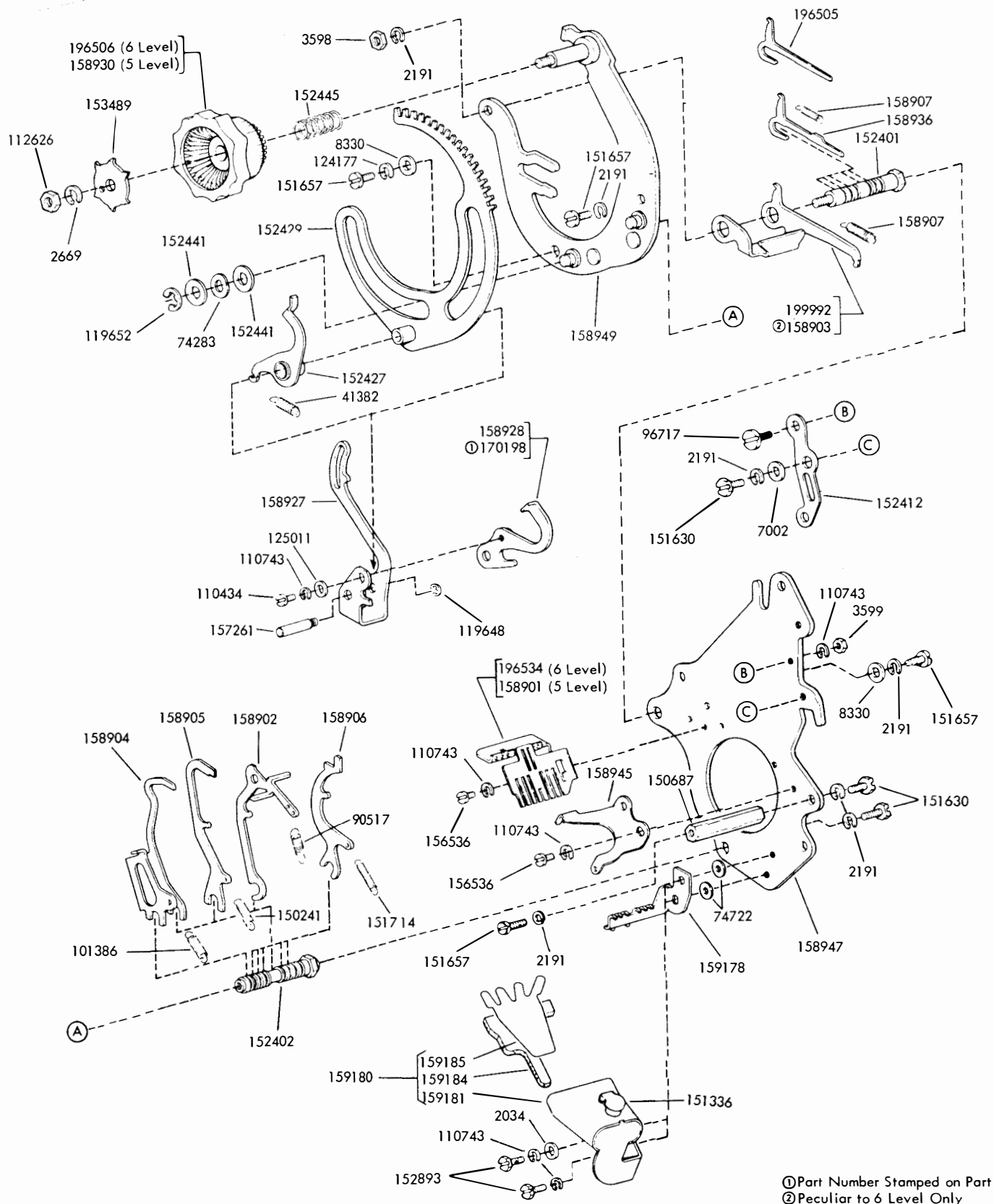
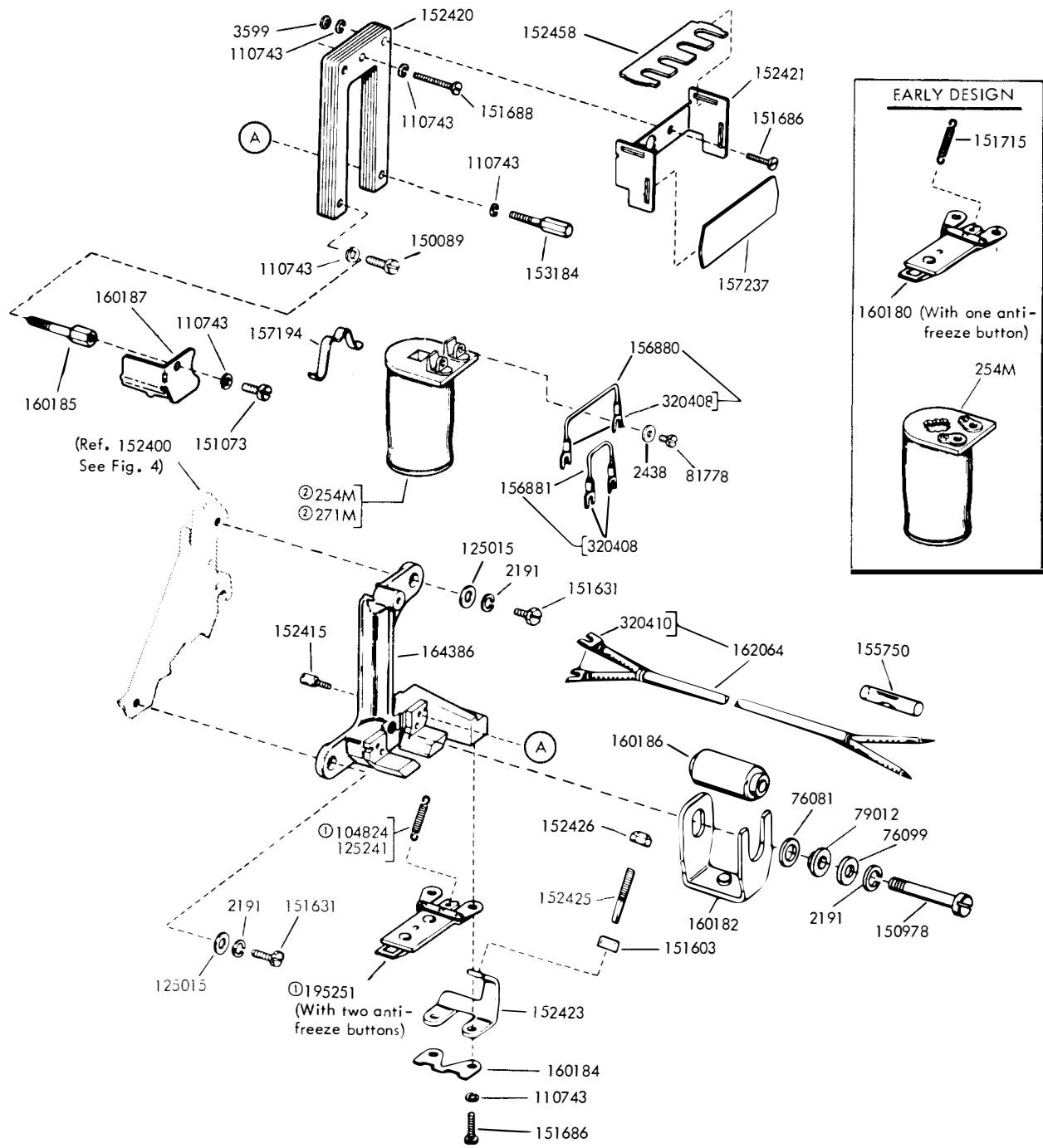


FIGURE 5. TWO CYCLE SELECTOR MECHANISM



① 195634 Modification Kit to provide quick release of the armature. (New and Early design parts are interchangeable in pairs only).
② Part Number Stamped on Bottom

FIGURE 6. SELECTOR MAGNET MECHANISM

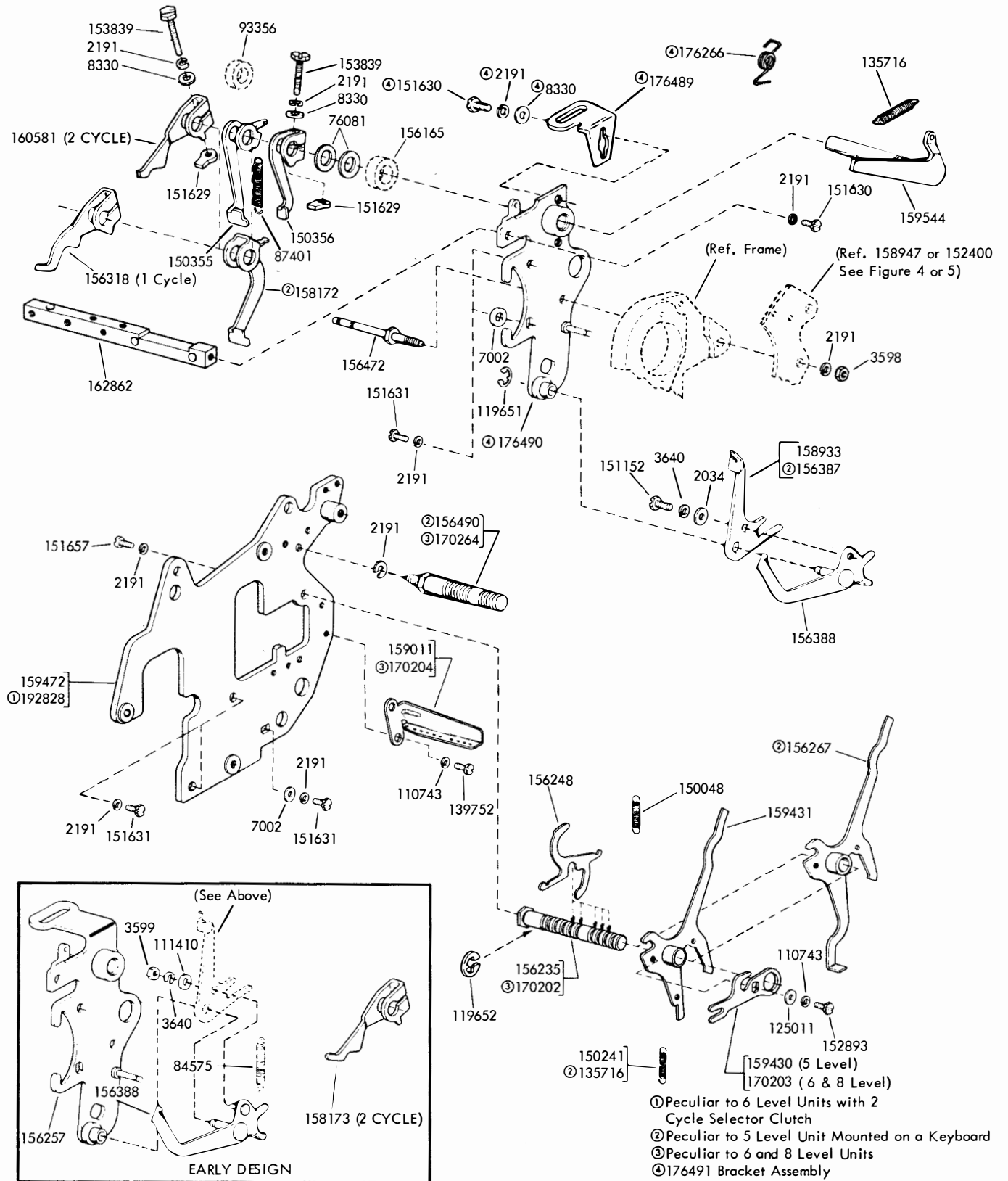


FIGURE 7. MAIN PLATE MECHANISM

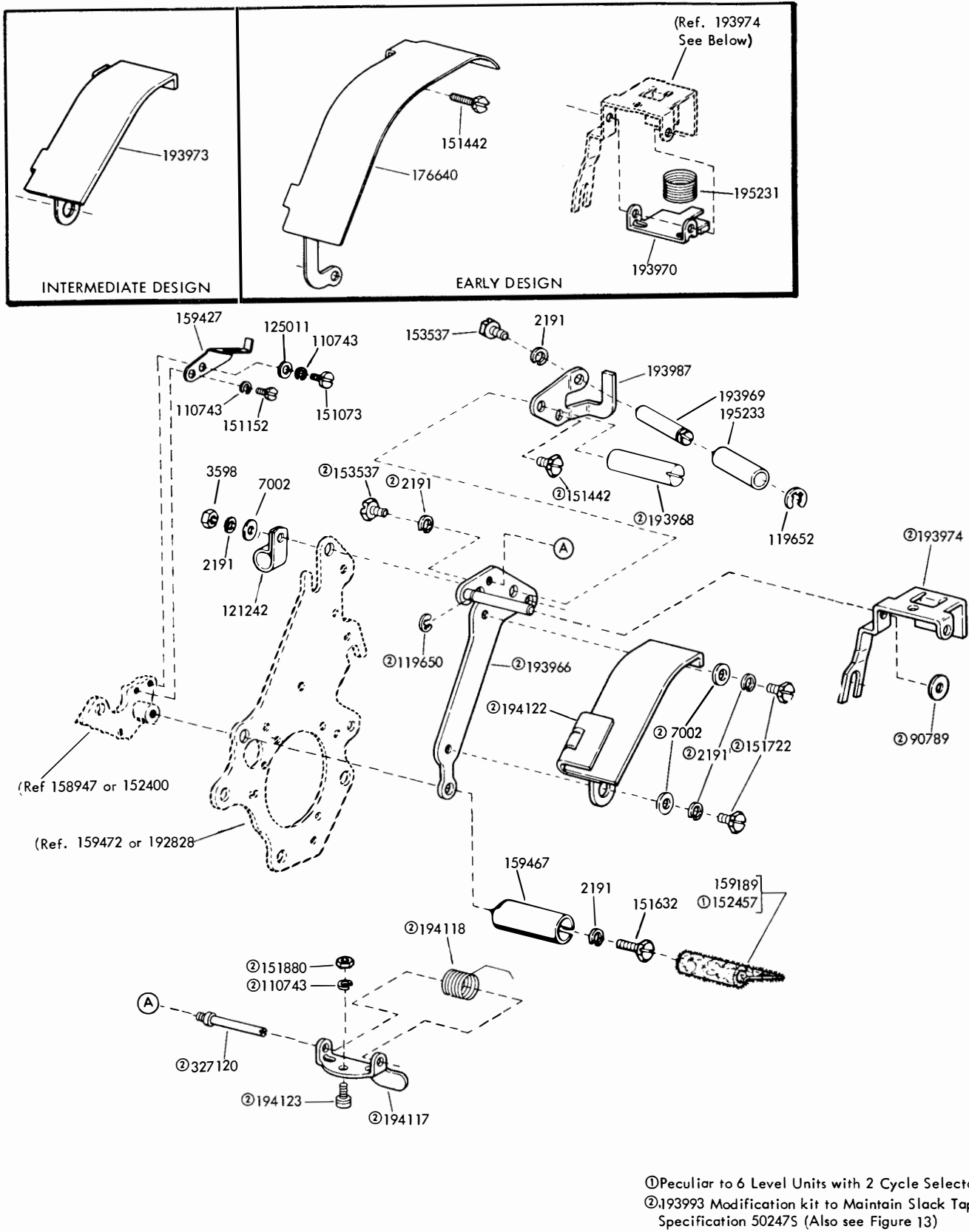


FIGURE 8. MAIN PLATE MECHANISM (Continued)

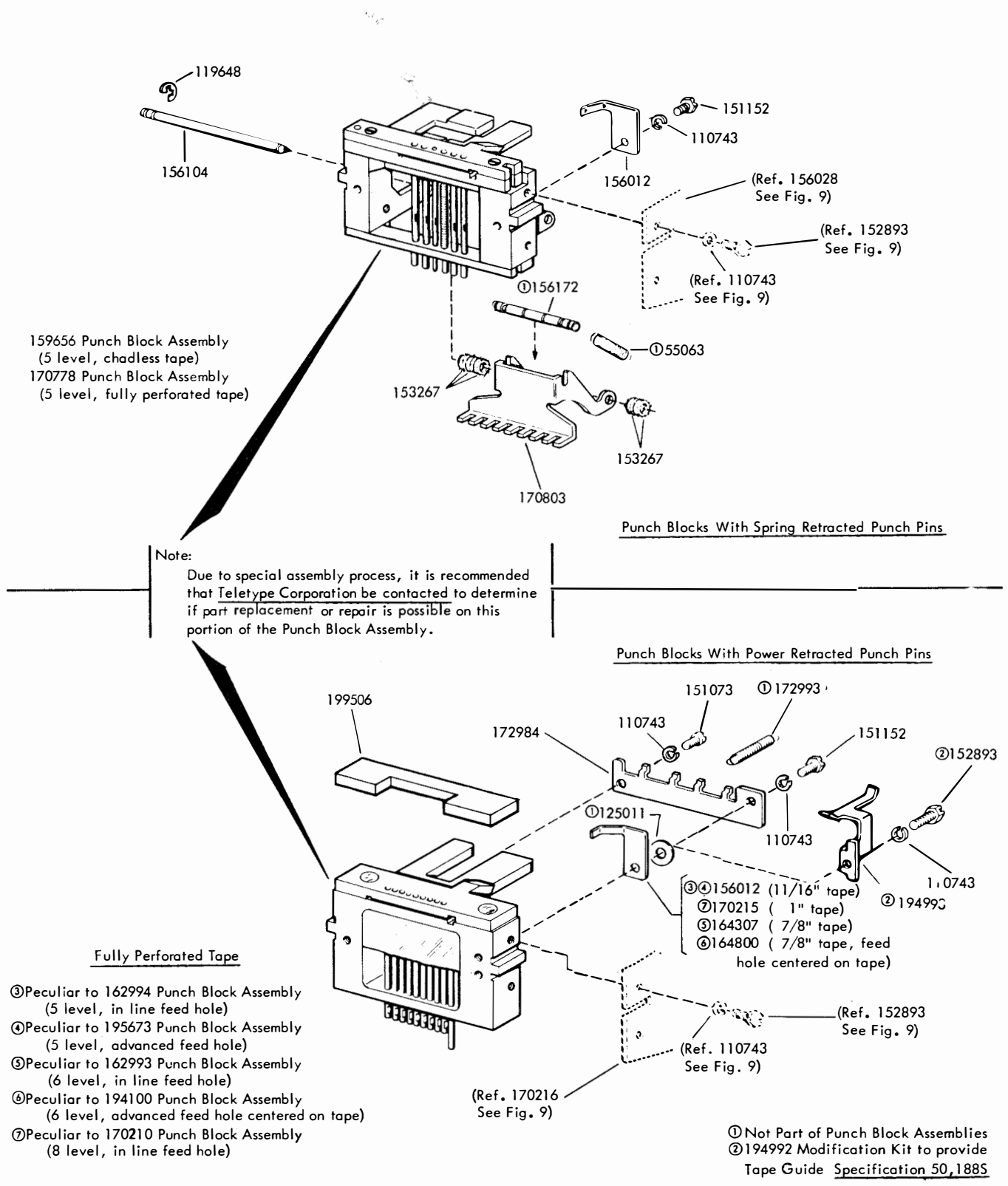


FIGURE 11. PUNCH BLOCK ASSEMBLIES

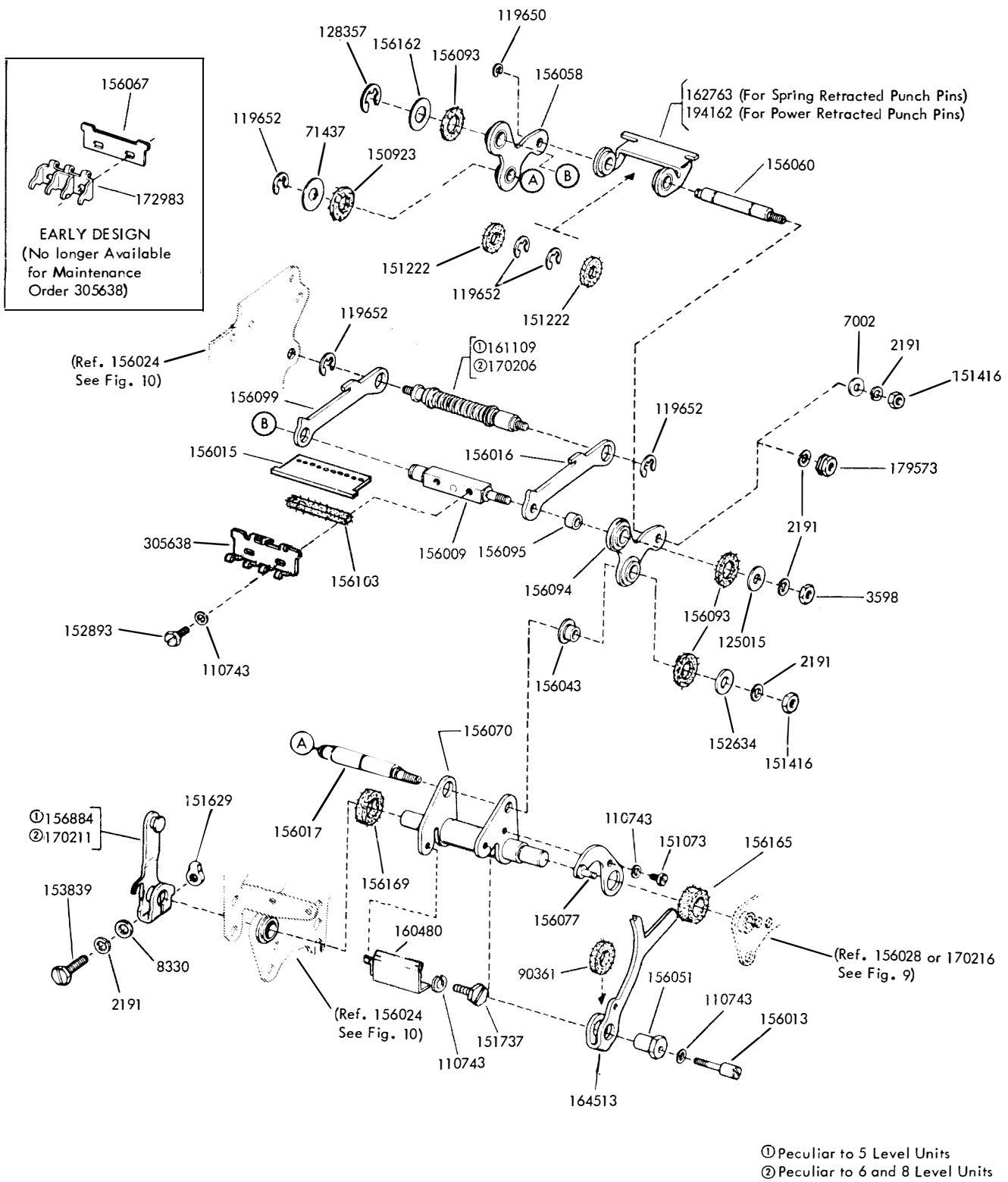


FIGURE 12. PUNCH BAIL MECHANISM

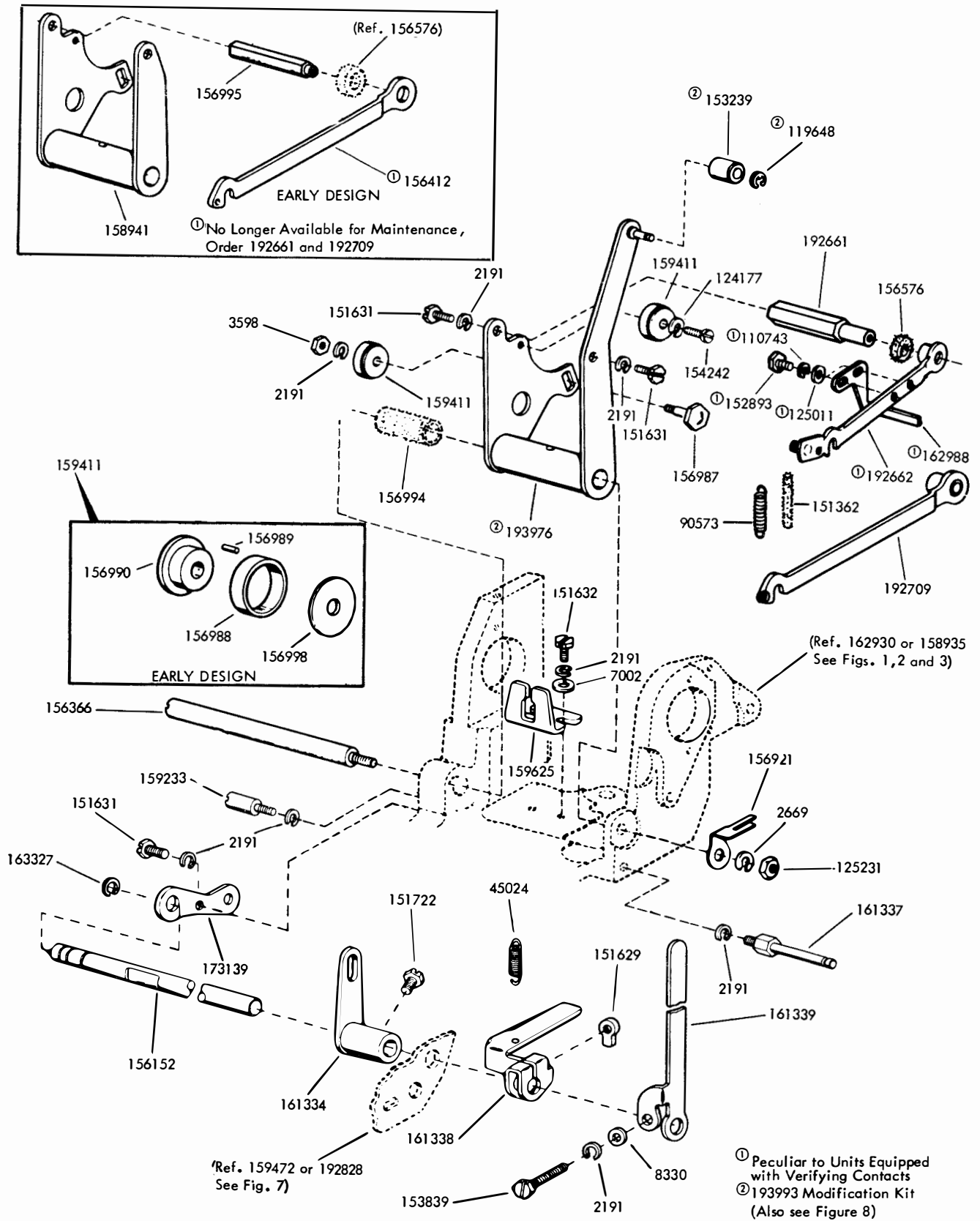
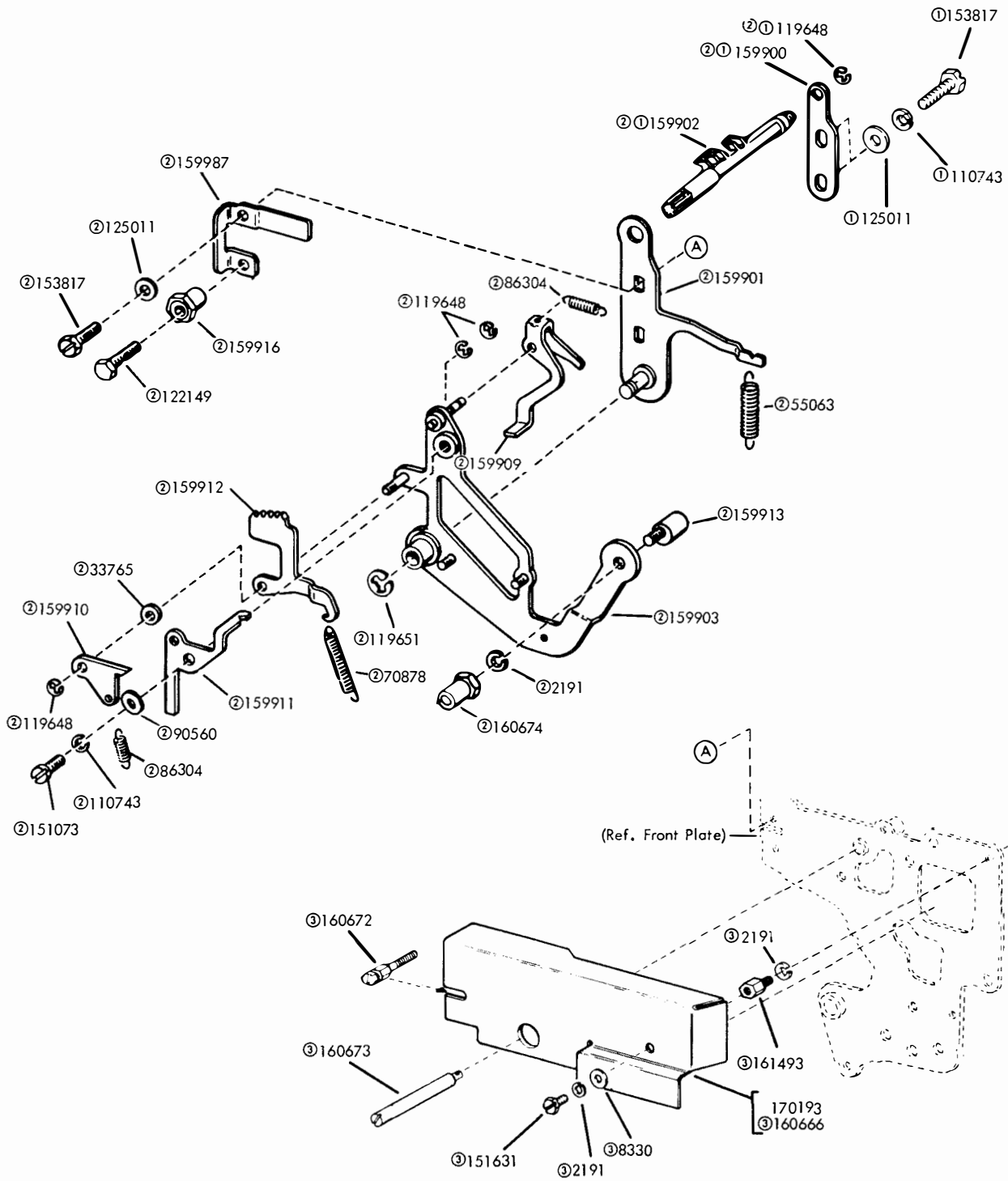


FIGURE 13. ROCKER BAIL MECHANISM



- ① Peculiar to Units Producing Chadless Tape
- ② 159363 Modification Kit to Add Manual Backspace
- ③ 160881 Modification Kit to Add Cover Guard

FIGURE 14. MANUAL BACKSPACE MECHANISM

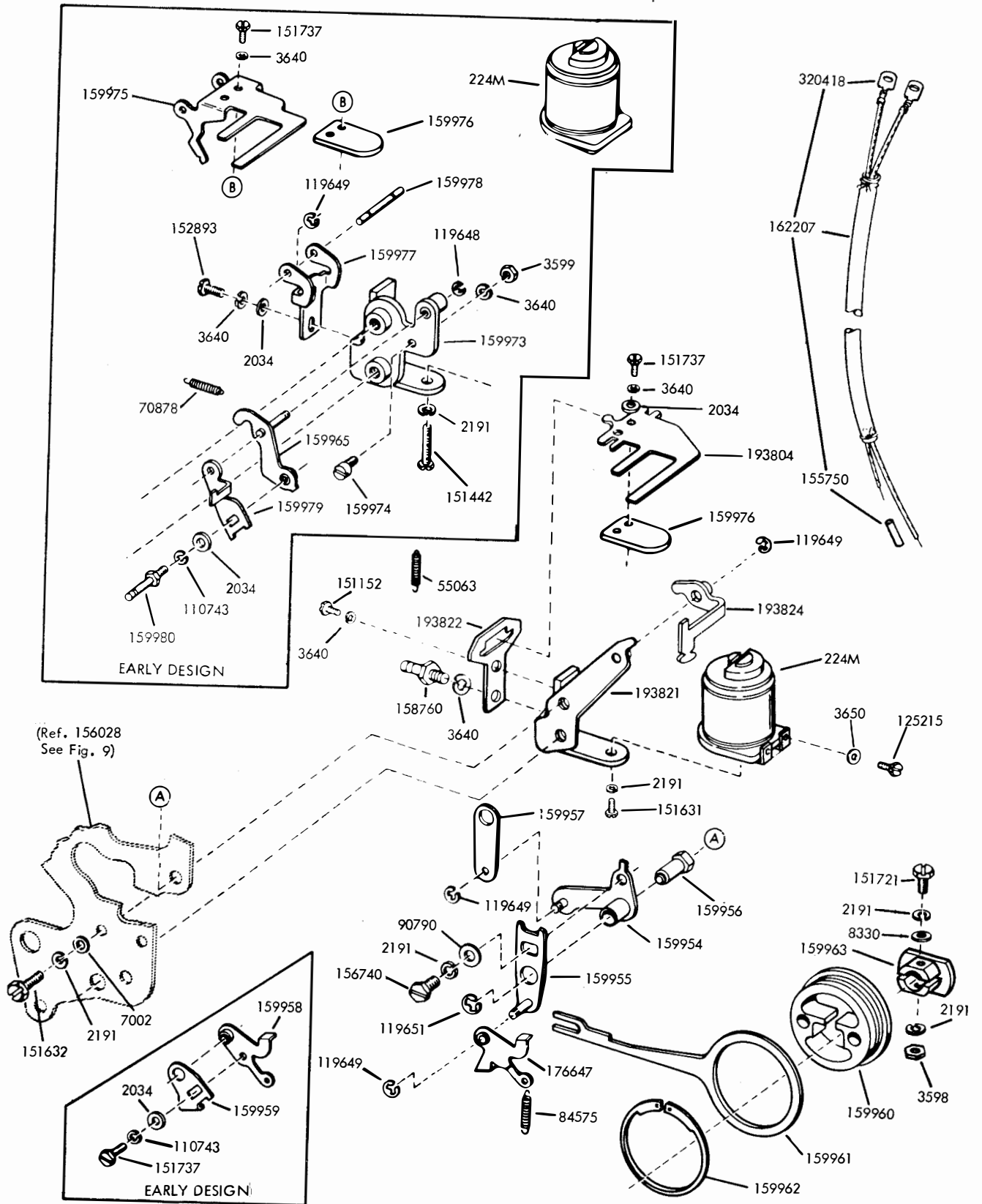
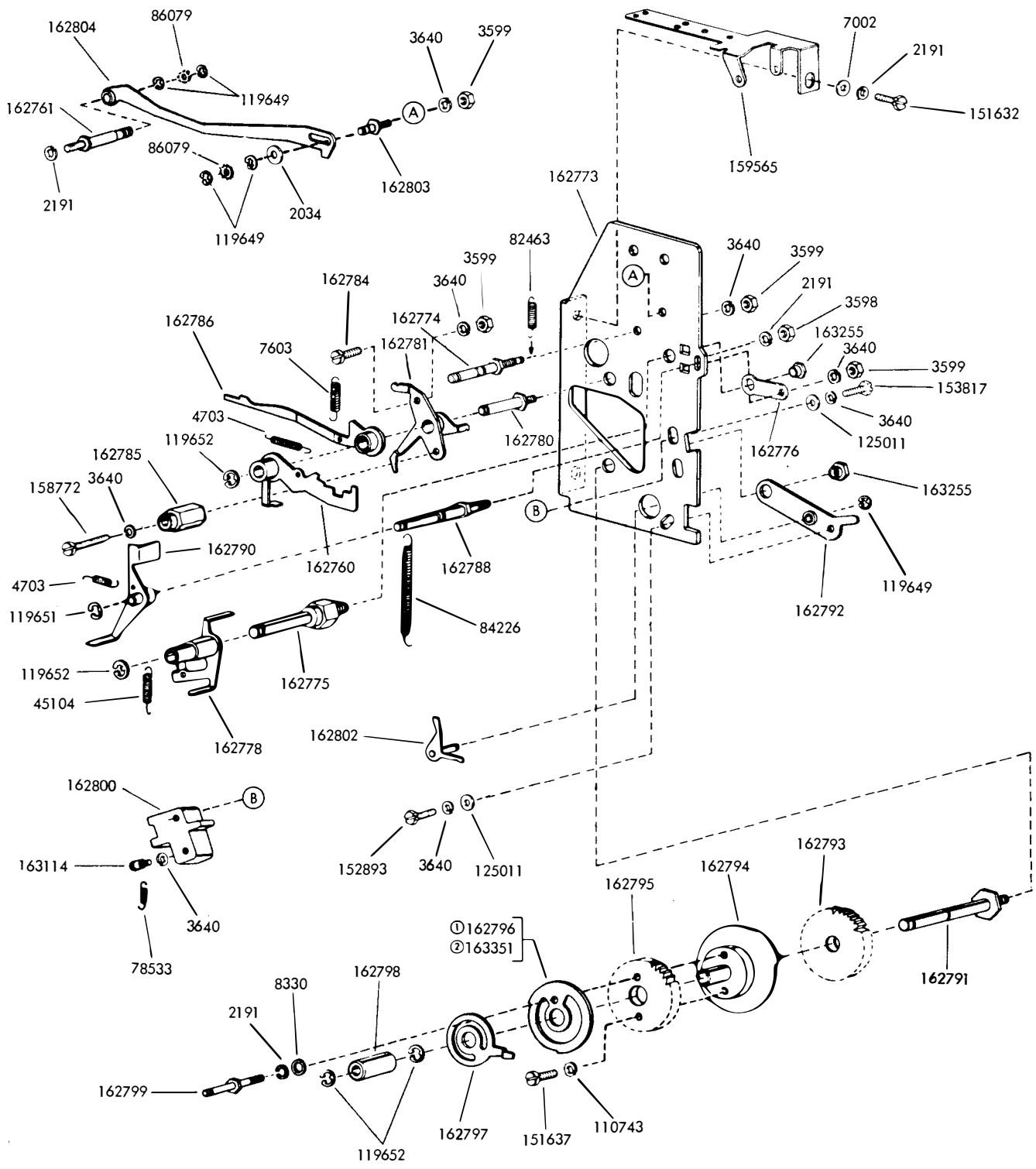


FIGURE 15. 159364 MODIFICATION KIT TO ADD POWER DRIVE TO BACKSPACE MECHANISM



Specification 50,0595 and 50,0435

- ① Peculiar to 162379 (4 Second Time Delay at 100 WPM)
- ② Peculiar to 163347 (16 Second Time Delay at 100 WPM)

FIGURE 19. 162379 AND 163347 MODIFICATION KITS TO ADD AUTOMATIC NON-INTERFERING LETTERS TAPE FEED OUT

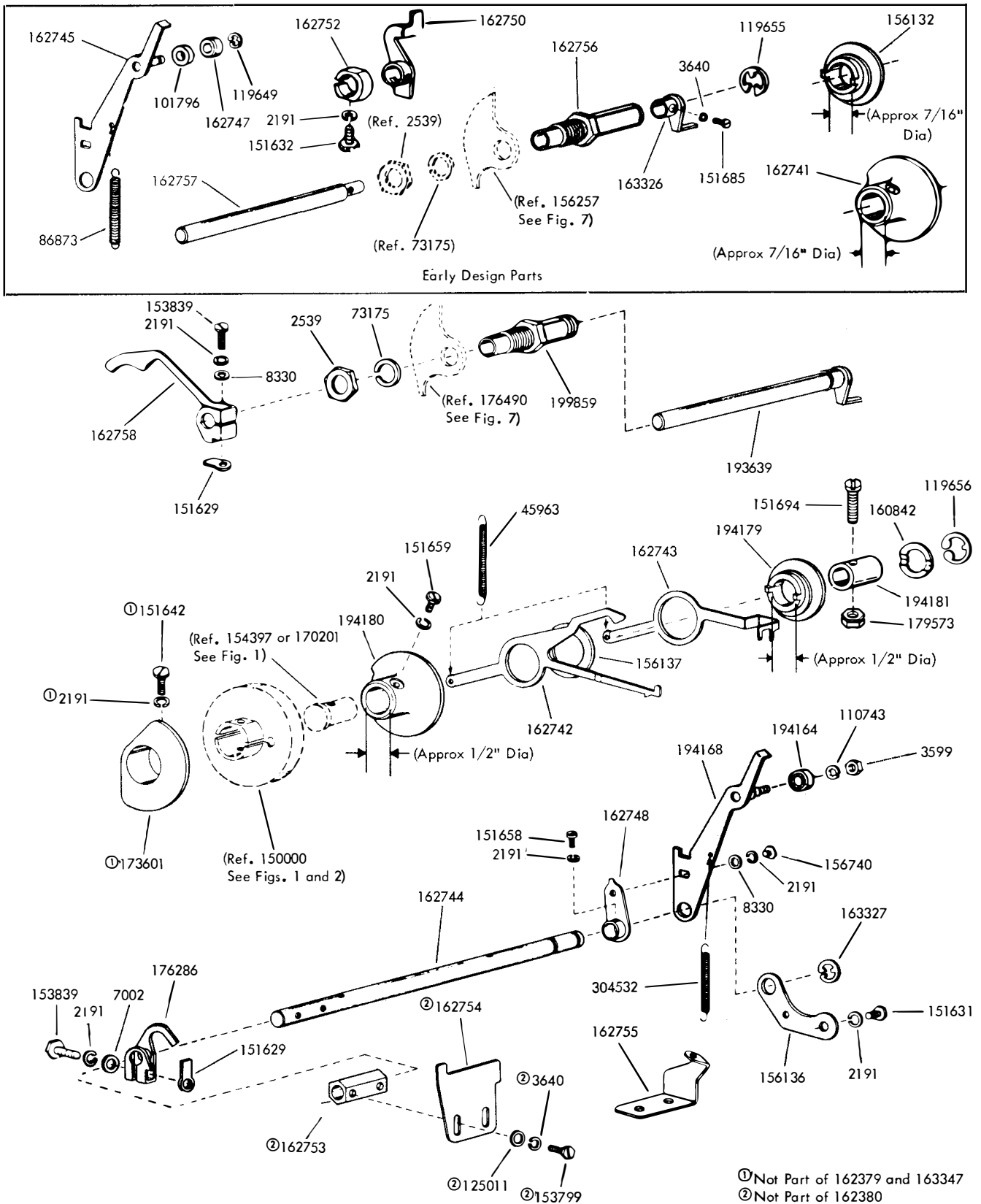
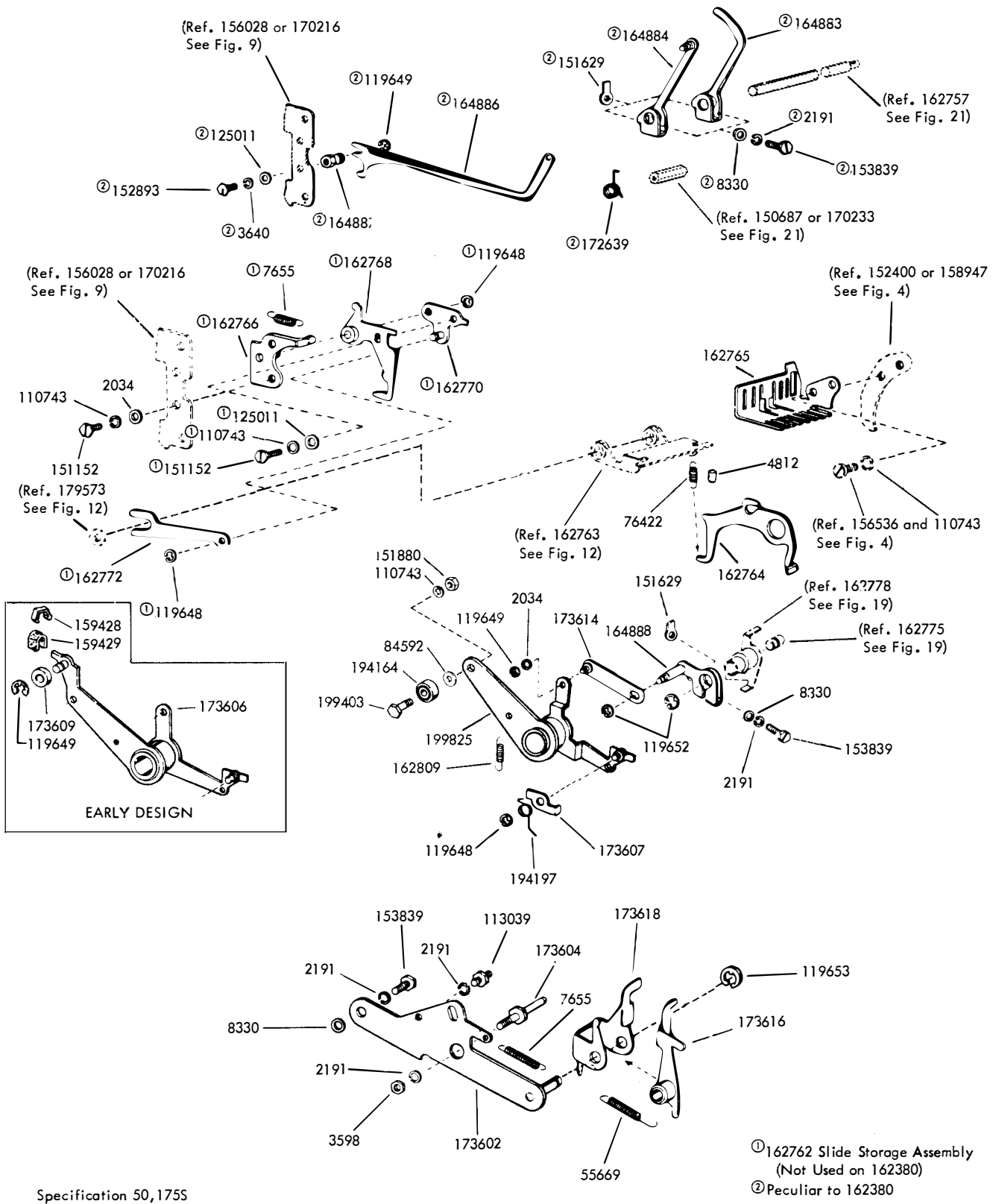
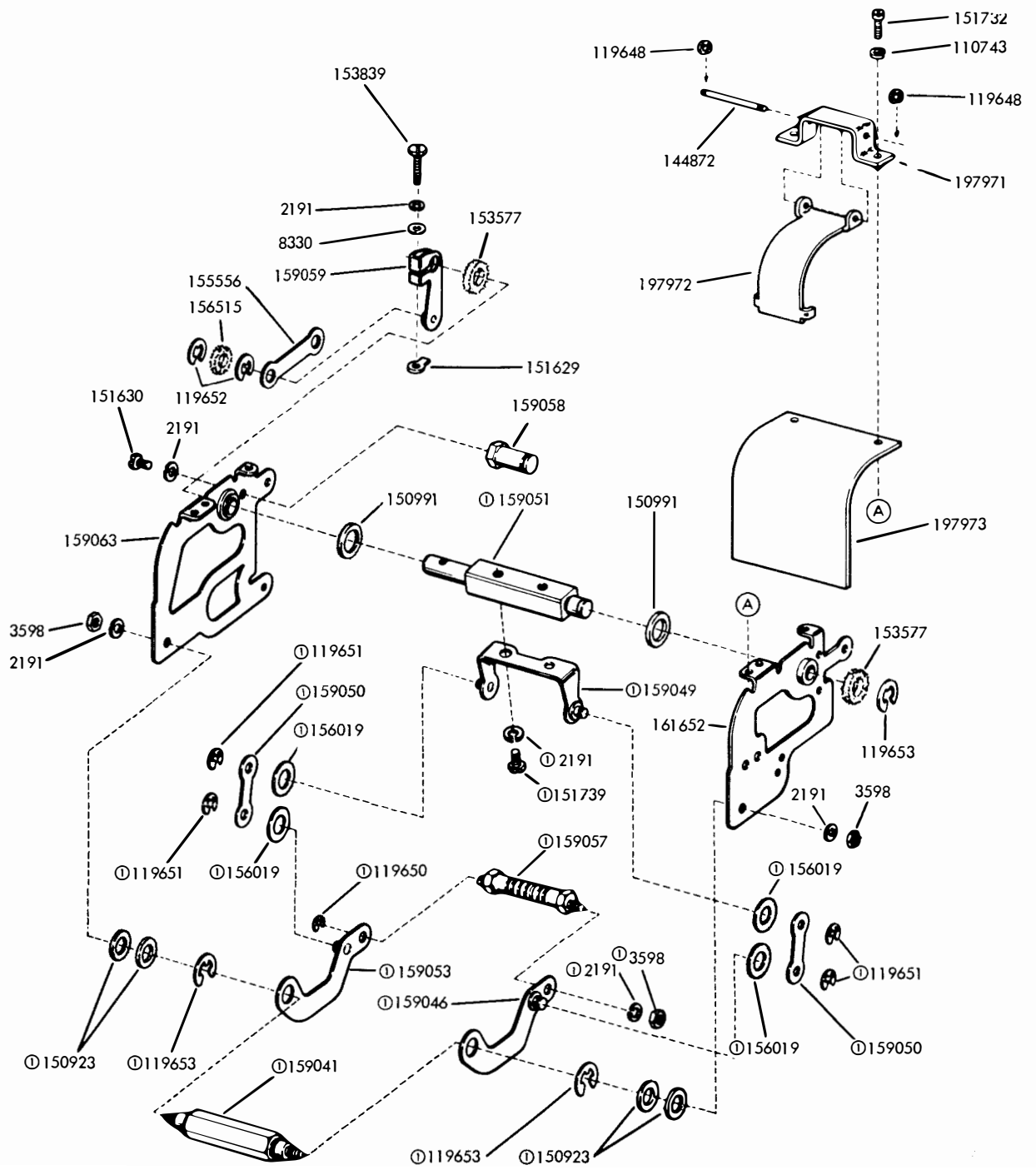


FIGURE 21. 162379,163347 (AUTOMATIC LETTERS) AND 162380,173443 AND 176628 (REMOTE CONTROL LETTERS) MODIFICATION KITS TO ADD NON-INTERFERING TAPE FEED OUT



Specification 50,175S

FIGURE 22. 162379,163347 (AUTOMATIC),162380 (BLANK),173443 AND 176628 (REMOTE CONTROL LETTERS) MODIFICATION KITS TO ADD NON-INTERFERING TAPE FEED OUT



⓪159072 Toggle Assembly

FIGURE 23. VERIFIER CONTACT MECHANISM TO VERIFY SIX CHARACTERS AFTER PERFORATION

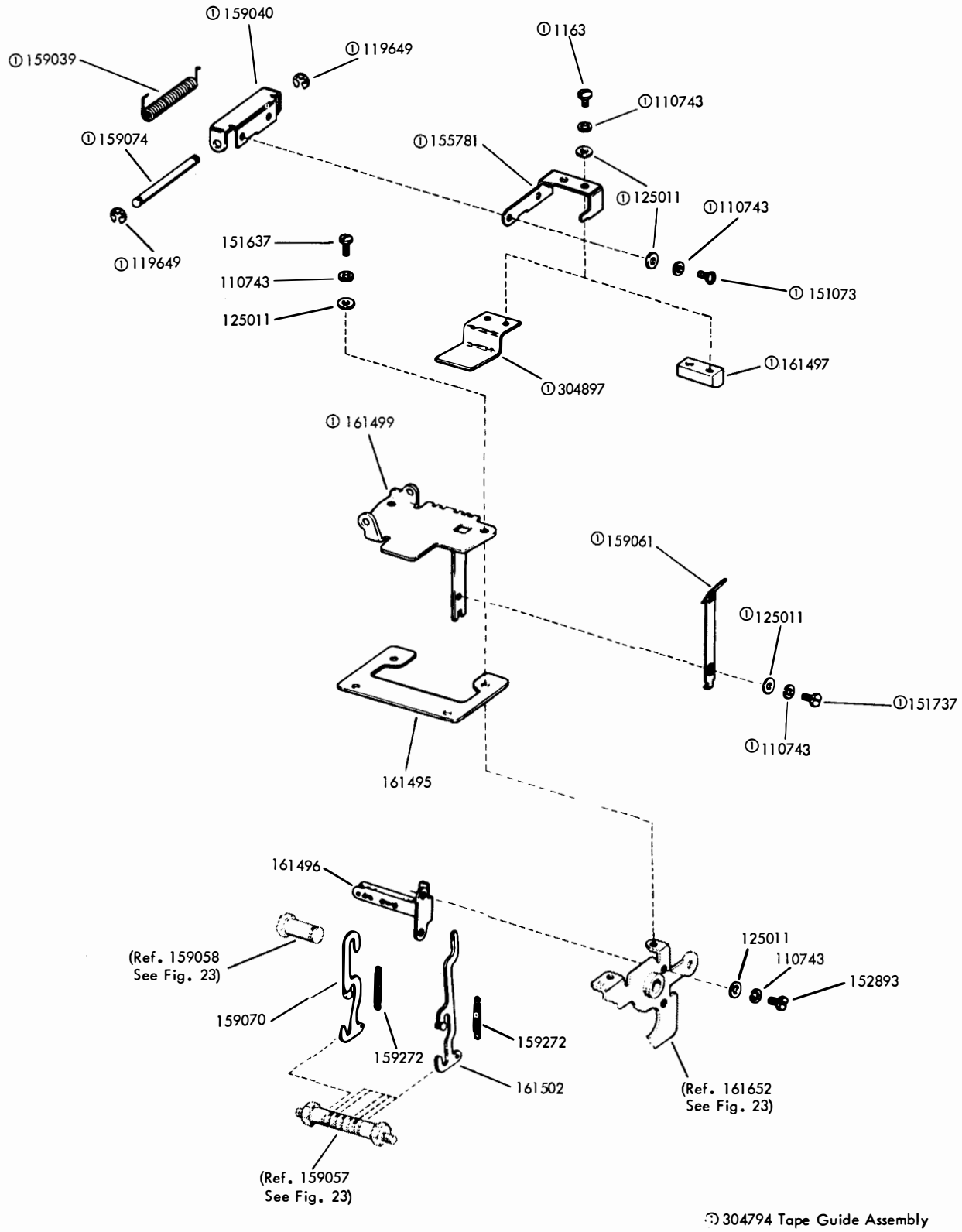


FIGURE 24. VERIFIER CONTACT MECHANISM TO VERIFY SIX CHARACTERS AFTER PERFORATION (continued)

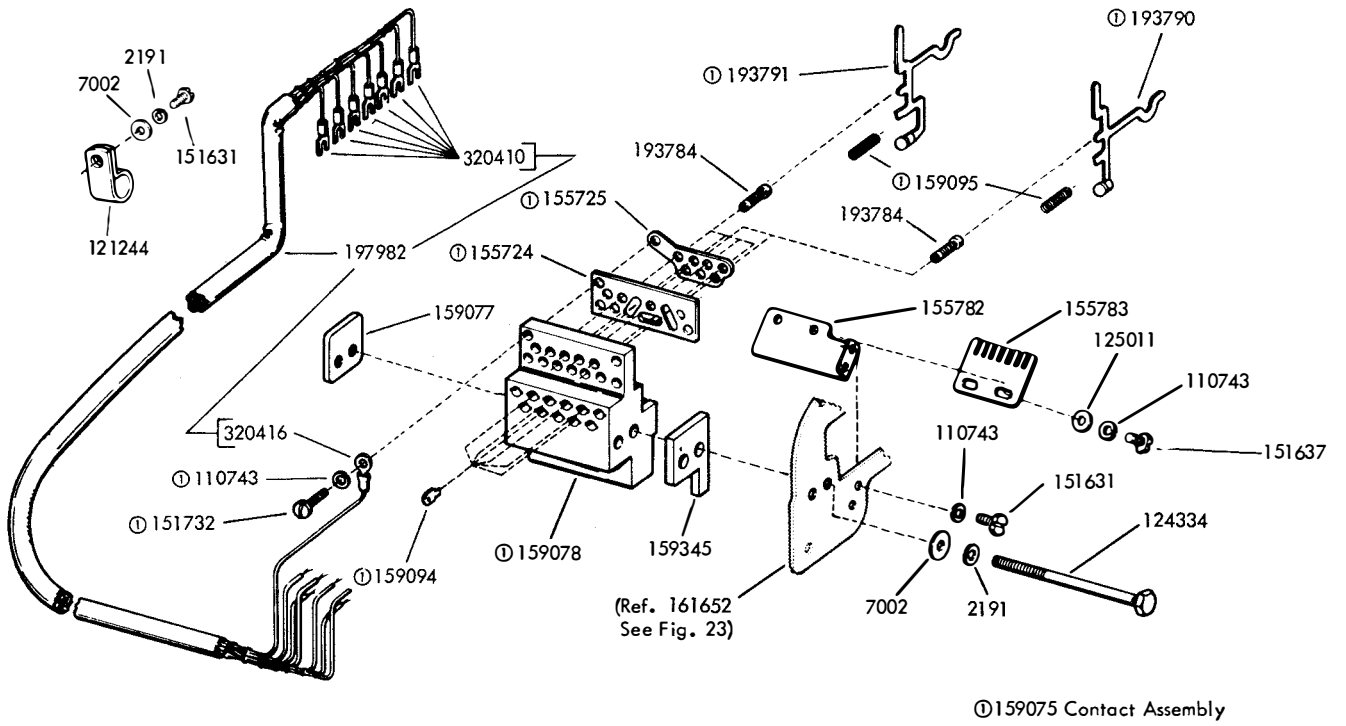


FIGURE 25. VERIFIER CONTACT BLOCK MECHANISM

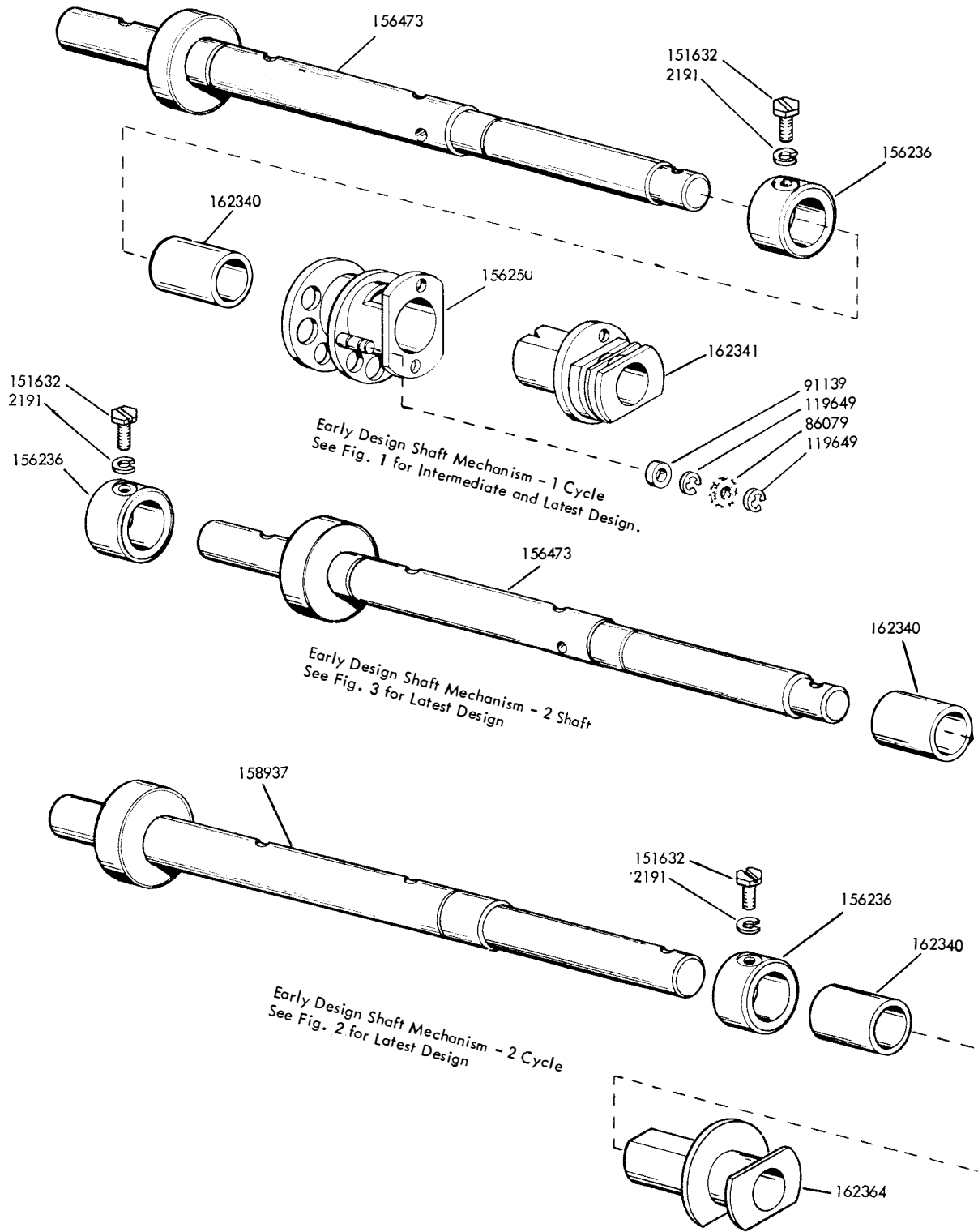


FIGURE 26. EARLY DESIGN SHAFT MECHANISM FOR 5 LEVEL UNITS

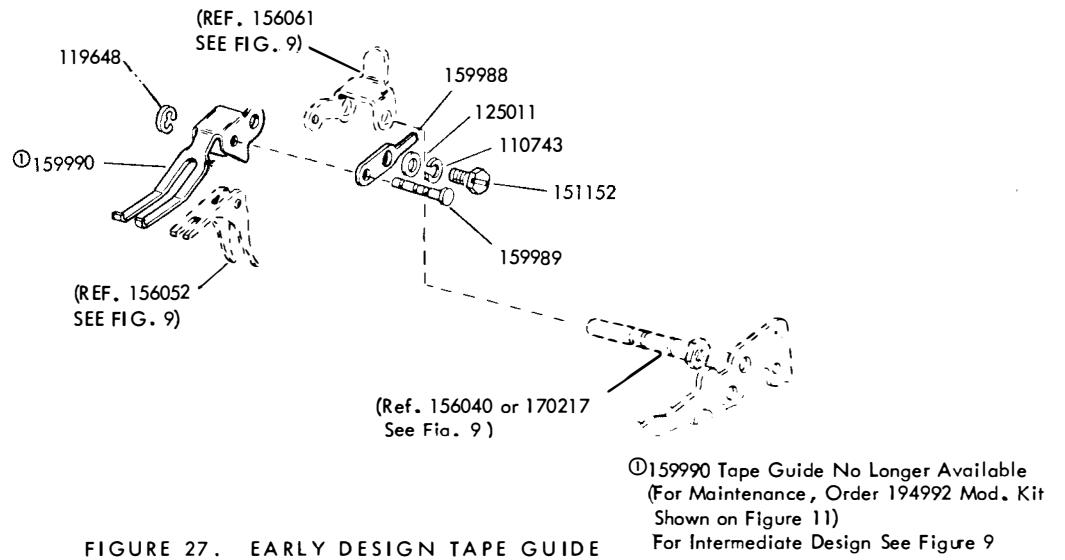


FIGURE 27. EARLY DESIGN TAPE GUIDE

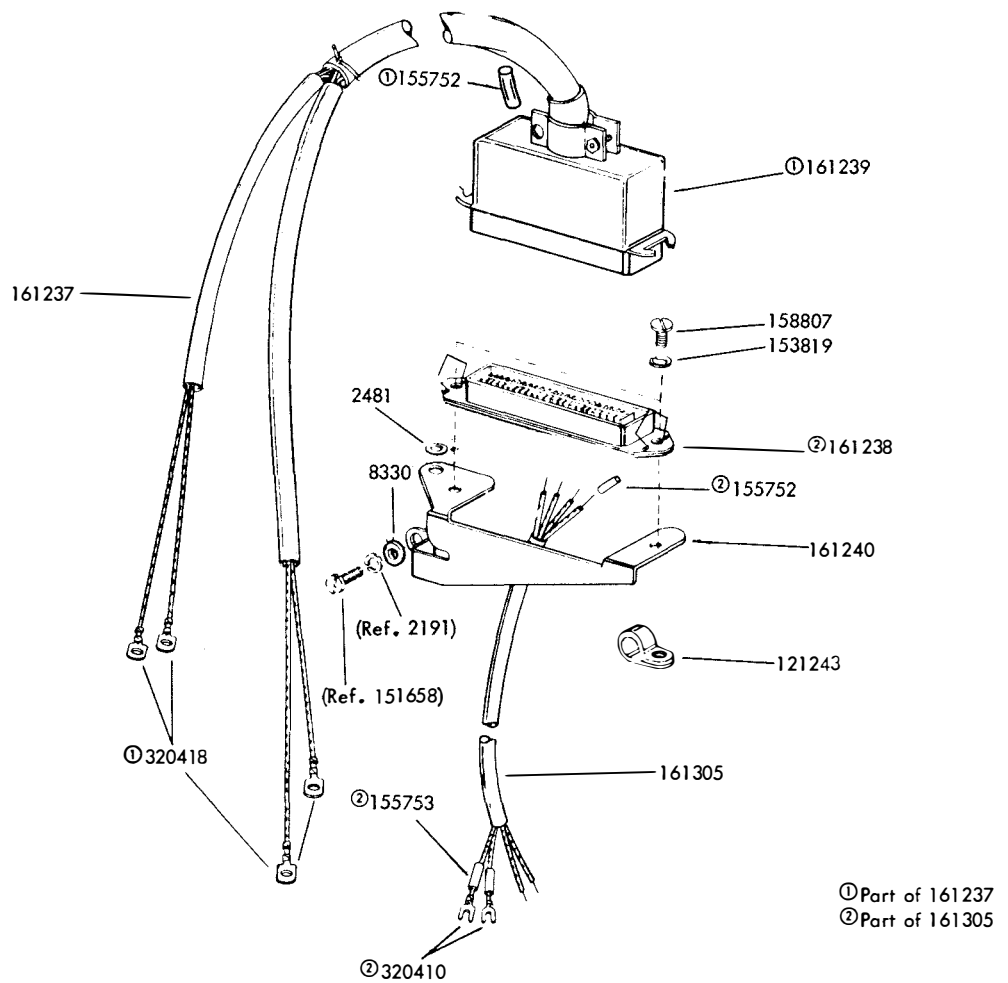
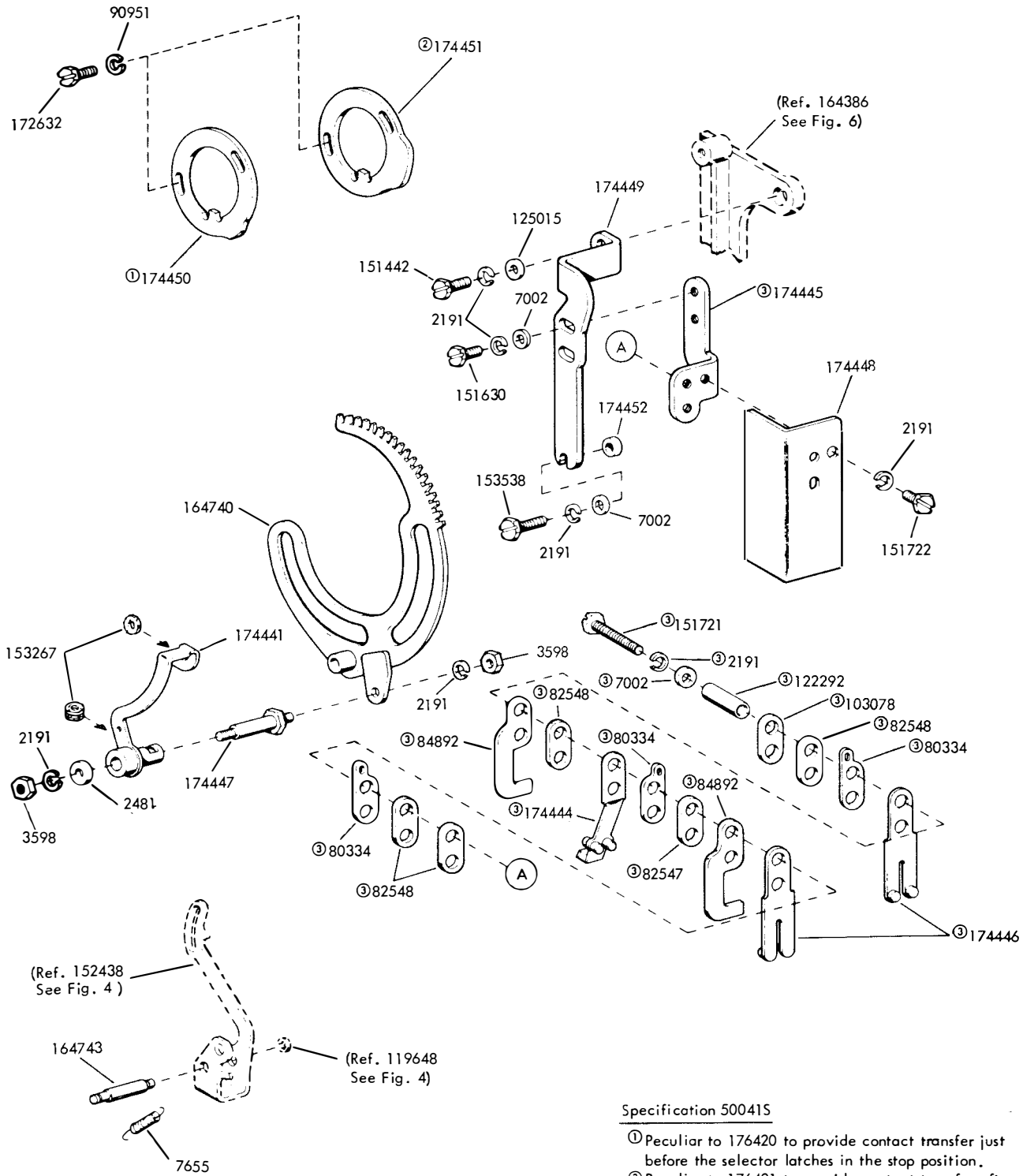


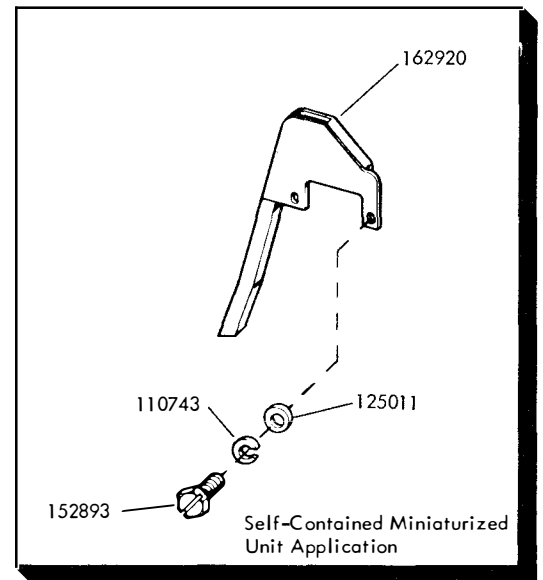
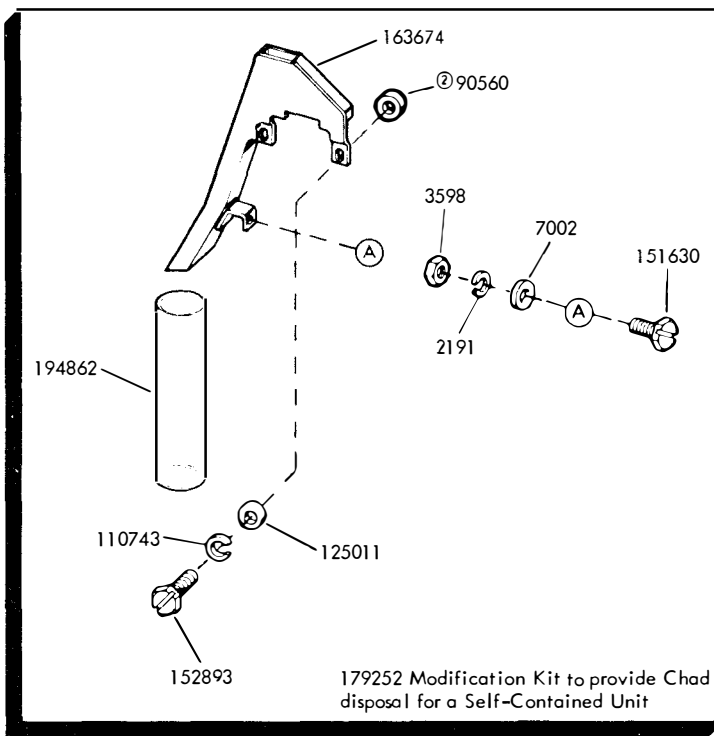
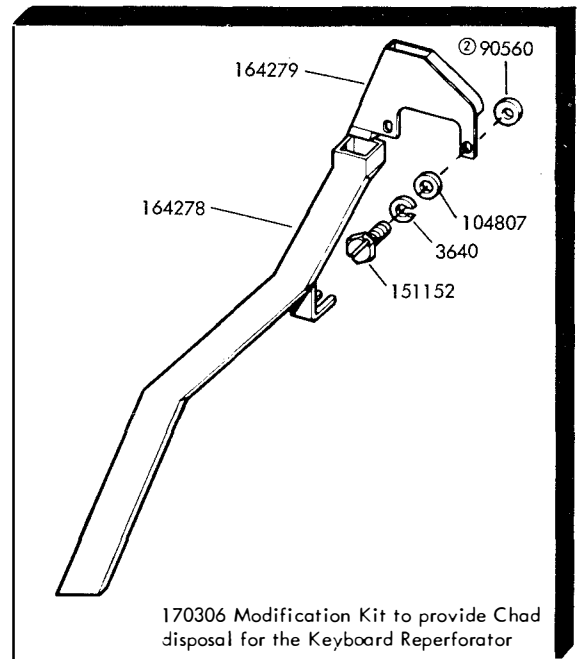
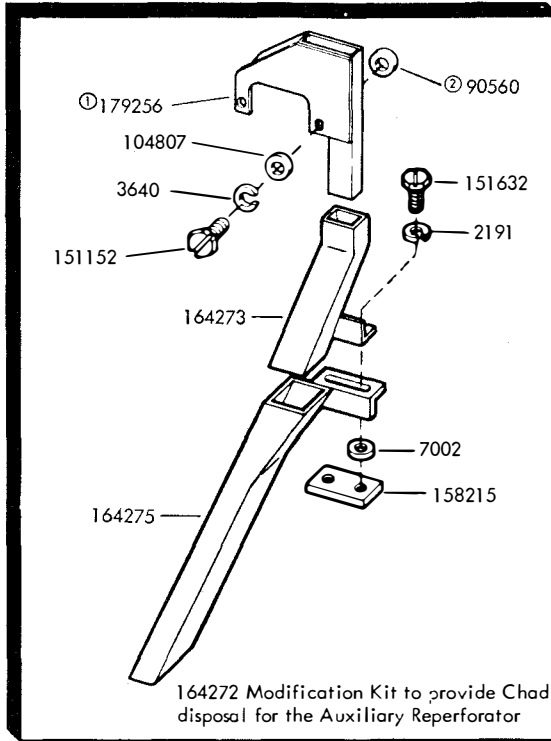
FIGURE 28. KEYBOARD REPERFORATOR UNIT CABLE ASSEMBLY



Specification 500415

- ① Peculiar to 176420 to provide contact transfer just before the selector latches in the stop position.
- ② Peculiar to 176421 to provide contact transfer after the #5 pulse has been locked in the selector.
- ③ 174442 Contact Assembly

FIGURE 29. 174439 (LESS CAM), 176420 AND 176421 (WITH CAMS) MODIFICATION KITS TO ADD TIMING CONTACT MECHANISM TO 5 LEVEL SINGLE CYCLE UNITS



- ① The 179256 Chad Chute is also used for the L/H RT Set.
- ② The 90560 Flat Washer mounts between the Chad Chute and the Punch Block when the Punch Block face is offset. When the Punch Block face is flat the 90560 Flat Washer mounts between the chad chute & the 104807 or the 125011 Flat Washer.

FIGURE 30. CHAD CHUTES

NUMERICAL INDEX

Part Number	Description and Page Number	Part Number	Description and Page Number	Part Number	Description and Page Number
190M	Coil, Magnet 20	84575	Spring 9, 17	150000	Drum, Clutch 3, 4, 21
224M	Coil, Magnet 17, 20	84592	Shim, .004" Thk 22	150001	Drum, Clutch 3, 4, 5
254M	Coil, Magnet 8	84892	Stiffener 28	150013	Disk, Adjusting 3, 5
271M	Coil, Magnet 8	86079	Washer, Felt 19, 26	150014	Disk, Adjusting 4, 5
1036	Nut, 6-40 Hex 11	86304	Spring 16	150026	Lever, Shoe Release 3
1163	Screw, 4-40 x 3/16 Fil 24	86873	Spring 21	150027	Lever, Shoe Release 4, 5
2034	Washer, Flat 6, 7, 9, 17, 19, 22	87401	Spring 9	150029	Wick, Felt 3, 4, 5
2191	Washer, Lock 3 to 12, 14 to 23, 25 to 29	90361	Washer, Felt 14	150034	Disk, 2 Stop Clutch Cam 4, 5
2438	Washer, Flat 8	90517	Spring 7	150040	Screw, 6-40 x 5/8 Fil 3, 4
2481	Washer, Flat 18, 27, 28	90560	Washer, Flat 16, 29	150043	Shoe, Secondary Clutch 3, 4, 5
2539	Nut, 3/8-32 Hex 21	90573	Spring 15	150044	Shoe, Primary Clutch 3, 4, 5
2669	Washer, Lock 6, 7, 15	90789	Washer, Flat 10	150048	Spring 6, 9
3598	Nut, 6-40 Hex 3, 4, 5, 6, 7, 9, 10, 11, 12, 14, 15, 17, 19, 20, 22, 23, 28, 29	90790	Washer, Flat 17	150089	Screw, 4-40 x 1/2 Fil 8
3599	Nut, 4-40 Hex 6, 7, 8, 9, 12, 17, 19, 20, 21	90791	Washer, Lock 11	150241	Spring 3, 4, 5, 7, 9
3606	Nut, 6-40 Hex 5, 12	90951	Washer, Lock 28	150355	Lever, Latch 9
3640	Washer, Lock 3, 4, 5, 9, 17, 18, 19, 20, 21, 22, 29	91120	Spring 11	150356	Lever, Trip 9
3650	Washer, Flat 17	91139	Roller 26	150687	Stud 6, 7, 22
4703	Spring 19, 20	93108	Washer, Lock 5	150830	Bushing, Shoulder 4, 5
4812	Wick, Felt 22	93118	Washer, Lock 12	150841	Bearing 4, 5
5363	Spring, Compression 11	93356	Washer, Flat 9, 11	150923	Washer, Felt 14, 23
5740	Screw, 2-56 x 1/4 Fil 12	96717	Screw, 4-40 Shoulder 6, 7	150978	Screw, 6-40 x 1-1/8 Fil 8
7002	Washer, Flat 5, 6, 7, 9, 10, 11, 12, 14, 15, 17, 18, 19, 20, 21, 25, 28, 29	101386	Spring 7	150991	Washer, Felt 23
7603	Spring 19, 20	101796	Washer, Felt 21	151073	Screw, 4-40 x 5/32 Fil 8, 10, 13, 14, 16, 18, 24
7655	Spring 22, 28	103078	Plate 28	151103	Spring 6
8330	Washer, Flat 6, 7, 9, 14, 15, 16, 17, 19, 21, 22, 23, 27	104807	Washer, Flat 29	151152	Screw, 4-40 x 3/16 Hex 9, 10, 13, 18, 20, 22, 27, 29
33765	Washer, Flat 16	104824	Spring 8	151222	Washer, Felt 14
41382	Spring 6, 7, 11	110434	Screw, 4-40 x 3/16 Fil 6, 7	151246	Washer, Flat 3, 4, 5
41543	Bearing, Ball 5	110743	Washer, Lock 3 to 19, 21 to 25, 27, 29	151336	Oiler 6, 7
41732	Plate, Clamp 18	111410	Washer, Flat 9	151346	Screw, 6-40 x 3/8 Fil 5
42823	Washer, Flat 3, 4, 5	111777	Connector, 4 Pt Receptacle 18	151362	Wick, Felt 15
45024	Spring 15	112352	Washer, Flat 12	151416	Nut, 6-40 Hex 11, 14
45104	Spring 19, 20	112626	Nut, 10-32 Hex 6, 7	151442	Screw, 6-40 x 1/2 Hex 3, 4, 5, 6, 10, 17, 20, 28
45963	Spring 21	113039	Post, Spring 22	151603	Spacer 8
49084	Spring 18	115941	Washer, Flat 5	151629	Nut, 6-40 Lug 9, 14, 15, 21, 22, 23
55063	Spring 13, 16, 17	119647	Ring, Retaining 11	151630	Screw, 6-40 x 1/4 Hex 4, 5, 6, 7, 9, 11, 18, 23, 28, 29
55669	Spring 22	119648	Ring, Retaining 6, 7, 11, 13, 15, 16, 17, 22, 23, 27, 28	151631	Screw, 6-40 x 5/16 Hex 5, 8, 9, 15, 16, 17, 21, 25
70878	Spring 16, 17	119649	Ring, Retaining 11, 17, 18, 19, 20, 21, 22, 24, 26	151632	Screw, 6-40 x 3/8 Hex 3, 4, 5, 10, 15, 17 to 21, 26, 29
71073	Washer, Flat 12	119650	Ring, Retaining 10, 14, 23	151637	Screw, 4-40 x 1/4 Fil 3, 12, 19, 24, 25
71437	Washer, Flat 14	119651	Ring, Retaining 9, 16, 17, 19, 23	151640	Lever, Shoe Release 3, 5
72522	Wick, Felt 11	119652	Ring, Retaining 6, 7, 9, 10, 11, 14, 19, 20, 22, 23	151642	Screw, 6-40 x 3/4 Fil 21
73175	Washer, Lock 21	119653	Ring, Retaining 22, 23	151657	Screw, 6-40 x 1/4 Fil 4, 6, 7, 9
73611	Wick, Felt 18	119654	Ring, Retaining 4, 5	151658	Screw, 6-40 x 5/16 Fil 3, 4, 5, 21, 27
74283	Washer, Spring 6, 7	119655	Ring, Retaining 21	151659	Screw, 6-40 x 1/2 Fil 21
74722	Washer, Flat 7	119656	Ring, Retaining 21	151685	Screw, 4-40 x 5/16 Fil 21
74727	Terminal, Contact 18	121242	Clamp, 1/8 ID Cable 10	151686	Screw, 4-40 x 3/8 Fil 8
76081	Washer, Flat 8, 9	121243	Clamp, 3/16 ID Cable 27	151688	Screw, 4-40 x 5/8 Fil 8, 18, 20
76099	Washer, Flat 8	121244	Clamp, 1/4 ID Cable 25	151690	Screw, 10-32 x 5/16 Fil 3, 4, 5
76246	Bushing, Insulating 18	122149	Screw, 4-40 Spl 16	151693	Screw, 6-40 x 9/16 Fil 3, 4, 5
76422	Spring 22	122292	Bushing, Insulating 28	151694	Screw, 6-40 x 11/32 Fil 18, 21
78533	Spring 6, 19, 20	124177	Washer, Lock 6, 7, 11, 15	151701	Spring, Torsion 6
79012	Insulator 8	124334	Screw, 6-40 x 1-23/32 Hex 25	151714	Spring 6, 7
80334	Terminal, Contact 28	125011	Washer, Flat 6, 7, 9, 10, 12, 13, 15, 16, 18, 19, 20, 21, 22, 24, 25, 27, 29	151715	Spring 8
80755	Bushing, Insulating 18	125015	Washer, Flat 8, 11, 14, 28	151721	Screw, 6-40 x 3/4 Hex 17, 28
81778	Screw, 4-40 x 3/16 Fil 8	125215	Screw, 4-40 x 3/16 Hex 17, 20	151722	Screw, 6-40 x 3/16 Hex 10, 11, 15, 20, 28
82463	Spring 19, 20	125231	Nut, 10-32 Hex 15	151728	Spring 3, 5
82547	Insulator, .094" Thk 28	125241	Spring 8	151732	Screw, 4-40 x 11/32 Fil 23, 25
82548	Insulator, .062" Thk 18, 28	128357	Ring, Retaining 14		
84226	Spring 19, 20	135716	Spring 9		
		139752	Screw, 4-40 x 11/64 Fil 9		
		144872	Pin, Unlock Lever 23		

NUMERICAL INDEX (Continued)

Part Number	Description and Page Number	Part Number	Description and Page Number	Part Number	Description and Page Number
151736	Spring 4, 5	155750	Sleeve, 3/32 ID x 1/2" Lg Insulating 8, 17, 18	156236	Collar 26
151737	Screw, 4-40 x 11/64 Hex 3, 4, 5, 14, 17, 18, 24	155752	Sleeve, 5/64 ID x 1/2" Lg Insulating 27	156248	Latch 9
151739	Screw, Identification 23	155753	Sleeve, 1/8 ID x 1/2" Lg Insulating 18, 27	156250	Cam 3, 26
151880	Nut, 4-40 Hex 10, 22	155781	Bracket 24	156257	Bracket Assembly 9, 21
152400	Plate, Selector Mounting 6, 8, 9, 10, 22	155782	Bracket 25	156267	Lever, Trip 9
152401	Guide 6, 7	155783	Plate 25	156318	Lever, Reset 9
152402	Guide, Selector Lever 6, 7	155995	Screw, 6-40 Shoulder 5	156366	Shaft, Rocker Bail 15
152403	Bracket, Guide 6	156008	Wheel, Feed 11	156387	Lever, Trip 9
152404	Bracket, Spring 6	156009	Post, Slide 14	156388	Lever, Adjusting 9
152406	Bracket, Spring 6	156012	Spring, Punch Block 13	156403	Disk, Bearing 3, 4, 5
152407	Lever, Spacing Lock 6	156013	Screw, 4-40 Spl 14	156412	Link, Drive 15
152409	Lever, Selecting 6	156015	Plate, Spring 14	156465	Washer, Spring 3, 4, 5
152410	Bail, Reset 6	156016	Link, Front Drag 14	156467	Ring, Retaining 3, 5
152411	Lever, Push 6	156017	Shaft, Eccentric 14	156472	Post, Spring 9
152412	Link 6, 7	156019	Washer, Felt 11, 23	156473	Shaft, Main 26
152415	Stud, Adjusting 3, 5, 8	156020	Slide 12	156490	Post, Guide 9
152420	Lamination, Magnet 8	156024	Plate, Rear 11, 12, 14	156515	Washer, Felt 23
152421	Bracket, Shield Mounting 8	156028	Plate, Front 11, 13, 14, 17, 22	156536	Screw, 4-40 x 1/8 Fil 6, 7, 22
152423	Bracket, Armature Stop Mounting 8	156036	Guide, Tape 11	156558	Washer, Felt 20
152425	Post, Spring 8	156040	Post 11, 27	156572	Washer, Felt 18
152426	Nut, 6-40 Self-Locking 8	156042	Post, Spacing 11	156576	Washer, Felt 15
152427	Latch w/Hub 6, 7	156043	Bushing 14	156577	Roller, Detent Lever 11
152429	Rack, Sector 6, 7	156044	Stud, Die Wheel 11	156632	Screw, 6-40 x 13/32 Hex 12
152432	Arm, Stop 6	156045	Shaft, Feed Wheel 11	156740	Screw, 6-40 x 7/32 Hex 17, 21
152436	Knob, Range Scale 6	156046	Block, Tape Guide 12	156880	Jumper, 2-3/8" Black 8
152438	Bail, Stop Arm 6, 28	156047	Spring, Torsion 11	156881	Jumper, 1-1/2" Black 8
152441	Washer, Flat 6, 7	156050	Stud, Eccentric 11	156884	Arm, Rocker 14
152445	Spring, Compression 6, 7	156051	Bushing, Eccentric 14	156921	Guide, Adjusting Lever 15
152457	Wick, Felt 10	156052	Shoe, Tape 11, 27	156941	Cam, Selector 3, 5
152458	Shield, Terminal 8	156054	Lever, Detent 11	156976	Connector, 32 Pt Plug 18
152634	Washer, Flat 14	156055	Wheel Die 11	156987	Screw, 6-40 Spl 15
152891	Spring 6	156058	Link, Rear 14	156988	Race, Outer 15
152893	Screw, 4-40 x 1/4 Hex 3, 4, 5, 6, 7, 9, 11, 12, 13, 14, 15, 17, 18, 19, 20, 22, 24, 29	156060	Shaft, Eccentric 14	156989	Bearing 15
153184	Post 8	156061	Arm, Tape Shoe 11, 27	156990	Race, Inner 15
153239	Roller 15	156062	Post, Pivot 11	156994	Strip, Felt 15
153267	Washer, Felt 13, 28	156067	Guide, Slide Post 14	156995	Post 15
153489	Detent 6, 7	156069	Plate 12	156998	Retainer, Roller 15
153537	Screw, 6-40 x 9/32 Hex 10	156070	Bail, Toggle 14	157194	Retainer, Spring 8
153538	Screw, 6-40 x 7/16 Hex 5, 12, 28	156077	Plate w/Post 14	157237	Shield, Terminal 8
153577	Washer, Felt 23	156078	Contact Assembly 18	157261	Shaft, Stop Arm 6, 7
153799	Screw, 4-40 x 21/64 Hex 21	156089	Slide w/Insulator 12	158169	Frame 5
153817	Screw, 4-40 x 3/8 Hex 16, 19, 20	156090	Screw, 6-40 Adjustable 11	158170	Gear, 21T 5
153819	Washer, Lock 27	156093	Washer, Felt 14	158171	Shaft w/Bearing 5
153839	Screw, 6-40 x 5/8 Hex 9, 14, 15, 21, 22, 23	156094	Link, Front 14	158172	Lever, Latch 9
154242	Screw, 6-40 x 5/16 Hex 15	156095	Bushing 14	158173	Cam, Reset 9
154335	Screw, 6-40 x 9/32 Fil 5	156099	Link, Rear Drag 14	158177	Collar 4, 5
154349	Spring 6	156103	Strip, Felt 14	158180	Cam w/Pins 5
154396	Cam w/Pin 3	156104	Shaft 13	158182	Disk, Clutch Cam 4, 5
154397	Shaft w/Bearing 3, 5, 21	156132	Bearing, Eccentric 21	158185	Gear, 49T 5
154398	Bearing, Needle 3, 4, 5	156136	Bracket, Shaft Mounting 21	158186	Screw, 4-40 x 7/32 Fil 4, 5
154620	Wick, Leather 6	156137	Washer, Flat 21	158215	Plate, Nut 29
154621	Retainer, Wick 6	156152	Shaft, Feed-Out Drive 15	158701	Gear, 35T 3, 4
154622	Lubricator 6	156159	Bracket 18	158745	Clamp, Bearing 3, 4, 5
154694	Disk, Clutch Cam 3, 5	156162	Washer, Flat 14	158760	Post, Spring 17
155090	Lubricator Assembly 6	156163	Guide 12	158772	Screw, 4-40 x 5/8 Hex 19
155096	Plate, Range Finder Mounting 6	156165	Washer, Felt 9, 14	158807	Screw, 3-48 x 11/64 Fil 27
155556	Link 23	156168	Spring 12	158855	Extension 12
155724	Strip, Insulating 25	156169	Washer, Felt 14	158881	Nut, 6-40 Shoulder 5
155725	Plate 25	156172	Rod 13	158901	Bracket, Guide 7
		156173	Stud 12	158902	Lever, Marking Lock 7
		156177	Bracket, Contact 18	158903	Bail, Stripper 7
		156183	Bracket, Anchor 11	158904	Lever, Start 7
		156184	Bracket, Anchor 11	158905	Lever, Spacing Lock 7
		156235	Post, Guide 9	158906	Lever, Selecting 7
				158907	Spring 7
				158919	Cam Sleeve 4
				158923	Bearing, Sleeve 4

NUMERICAL INDEX (Continued)

Part Number	Description and Page Number	Page Number	Description and Page Number	Part Number	Description and Page Number
158924	Disk 4	159575	Bracket, Stop 18	160944	Washer, Felt 18
158925	Slide, Tape Depressor 12	159578	Bail, Front Contact 18	160948	Screw, 2-56 Spl 11
158926	Screw, 4-40 x 7/32 Hex 4	159579	Bail, Rear Contact 18	160997	Roller 18
158927	Bail, Start 7	159580	Shaft, Actuating Bail 18	160998	Arm 18
158928	Arm, Stop 7	159601	Bracket, Spring 18	161100	Spring, Contact 18
158930	Knob 7	159625	Bracket, Bail Guide 15	161102	Spring, Contact 18
158932	Cam 4	159656	Block Assembly, Punch 13	161107	Stud 11
158933	Lever, Trip 9	159816	Stud 12	161108	Stud 12
158935	Frame 3, 4, 15	159820	Connector, 32 Pt Receptacle 18	161109	Post, Guide 14
158936	Lever, Push 7	159865	Drum, Clutch 5	161139	Nut, 6-40 Hex 11
158937	Shaft w/Bearing 26	159880	Slide 6	161237	Cable Assembly 27
158940	Wick, Felt 5	159887	Gear Set 1,5	161238	Connector, 36 Pt Receptacle 27
158941	Bail, Rocker 15	159888	Pinion, 28T 5	161239	Connector, 36 Pt Plug 27
158945	Bracket 7	159889	Gear, 49T 5	161240	Bracket, Connector 27
158946	Cable Arm 2, 18	159890	Gear Set 1,5	161305	Cable Assembly 27
158947	Plate 7, 9, 10, 22	159891	Pinion, 21T 5	161334	Lever, Stop 15
158949	Plate w/Studs 7	159892	Gear, 48T 5	161337	Post, Stop 15
158950	Contact Arm, Code Reading 18	159893	Gear Set 1,5	161338	Lever, Trip 15
159011	Bracket, Spring 9	159894	Pinion, 14T 5	161339	Lever, Hand 15
159039	Spring, Torsion 24	159895	Gear, 40T 5	161342	Lever, Start 6
159040	Bracket 24	159900	Plate 16	161493	Post, Supporting 16
159041	Post 23	159901	Plate w/Post 16	161495	Plate 24
159046	Plate, Front 23	159902	Shaft, Rake 16	161496	Bracket, Spring 24
159049	Bracket w/Studs 23	159903	Bellcrank 16	161497	Block, Lid 24
159050	Link 23	159909	Pawl, Feed 16	161499	Plate 24
159051	Shaft, Toggle 23	159910	Latch, Return 16	161502	Slide, Sensing 24
159053	Plate, Rear 23	159911	Plate 16	161652	Plate, Front 23, 24, 25
159057	Post, Guide 23, 24	159912	Gear, Segment 16	162064	Cable w/Terminals 8
159058	Post 23, 24	159913	Screw, 6-40 Eccentric 16	162092	Bail, Guide 11
159059	Arm 23	159916	Eccentric 16	162093	Spring, Torsion 11
159061	Latch 24	159954	Link, Adjusting 17	162207	Cable w/Terminals 17
159063	Plate, Rear 23	159955	Link, Drive 17	162248	Hub 3, 4, 5
159070	Slide 24	159956	Post 17	162271	Modification Kit 2, 18
159072	Toggle Assembly 23	159957	Link 17	162273	Modification Kit 2, 18
159074	Shaft 24	159958	Latch 17	162306	Cable 18
159075	Contact Assembly 25	159959	Extension 17	162340	Sleeve 26
159077	Plate, Nut 25	159960	Eccentric 17	162341	Bearing 26
159078	Block, Contact 25	159961	Arm, Eccentric 17	162364	Bearing 26
159094	Plate 25	159962	Ring, Retaining 17	162379	Modification Kit 2, 19, 21, 22
159095	Spring 25	159963	Hub 17	162380	Modification Kit 2, 20, 21, 22
159178	Bracket 7	159965	Arm, Adjusting 17	162573	Retainer 4, 5
159180	Lubricator Arm 6, 7	159973	Bracket w/Bushing 17	162741	Cam 21
159181	Lubricator 6, 7	159974	Eccentric 17	162742	Pawl, Detent 21
159184	Wick, Lubricating 6, 7	159975	Bail, Armature 17	162743	Pawl, Feed 21
159185	Retainer, Wick 6, 7	159976	Armature 17, 20	162744	Shaft 21
159189	Wick, Oil 10	159977	Hinge 17, 20	162745	Lever, Cam Follower 21
159233	Stud 12, 15	159978	Shaft 17, 20	162747	Roller 21
159272	Spring 24	159979	Arm, Non-Repeat 17	162748	Lever 21
159341	Bearing, Ball 3, 4, 5	159980	Post, Spring 17	162750	Lever 21
159345	Block, Spacing 25	159987	Bracket, Guide 16	162752	Collar 21
159363	Modification Kit 16	159988	Plate, Adjusting 27	162753	Spacer, .813" Thk 21
159364	Modification Kit 1, 17	159989	Post, Shoe Pivot 27	162754	Plate 21
159379	Modification Kit 2, 18	159990	Bail, Guide 27	162755	Bracket, Spring 21
159381	Modification Kit 2, 18	160180	Armature w/Extension 8	162756	Bushing 21
159411	Bearing Assembly 15	160182	Bracket w/Button 8	162757	Shaft 21, 22
159427	Bracket, Stop 10	160184	Plate, Stop 8	162758	Lever, Cam Follower 21
159428	Retainer, Wick 22	160185	Post 8, 18	162760	Latch 19, 20
159429	Wick, Felt 22	160186	Bushing, Shoulder 8	162761	Post 19
159430	Lever, Slide Trip 9	160187	Shield, Oil 8	162762	Storage Assembly, Slide 22
159431	Lever, Main Trip 9	160480	Pusher, Tape 14	162763	Bail, Reset 14, 22
159467	Holder, Wick 10	160581	Lever, Upper Reset 9	162764	Lever, Slide Trip 22
159472	Plate, Main 9, 10, 15, 18	160666	Guard, Backspace 16	162765	Bracket 22
159544	Release, Clutch 9	160672	Stud 16	162766	Plate w/Post 22
159560	Spring 12	160673	Shaft, Feedwheel 16	162768	Latch 22
159565	Bracket, w/Post 18, 19, 20	160674	Nut, 6-40 Shoulder 16	162770	Plate w/Stud 22
159568	Bracket, Contact 18	160842	Washer, Spring 21	162772	Link 22
159570	Spring, Contact 18	160881	Modification Kit 16	162773	Plate, Main 19, 20
159571	Stiffener 18				

NUMERICAL INDEX (Continued)

Part Number	Description and Page Number	Part Number	Description and Page Number	Part Number	Description and Page Number
162774	Post, Spring 19, 20	164804	Shaft w/Bearing 4	172993	Spring 13
162775	Shaft 19, 20, 22	164851	Wheel, Feed 11	173139	Bracket 15
162776	Plate 19	164883	Lever, Cam Follower 22	173200	Sleeve, Bearing 3
162778	Lever 19, 20, 22	164884	Lever w/Stud 22	173203	Sleeve, Bearing 4, 5
162780	Shaft 19, 20	164886	Link 22	173204	Shaft w/Bearings 4
162781	Lever 19, 20	164887	Post 22	173336	Modification Kit 3
162784	Screw, 4-40 Eccentric 19, 20	164888	Lever w/Post 22	173337	Modification Kit 4
162785	Bushing, Eccentric 19, 20	170077	Cam, Selector 3, 5	173338	Modification Kit 5
162786	Arm, Blocking 19, 20	170081	Knob 6	173340	Collar 3, 4, 5
162788	Post 19, 20	170107	Guide, Tape 11	173443	Modification Kit 2, 20, 21, 22
162790	Lever w/Hub 19	170124	Lubricator Assembly 6	173601	Cam 21
162791	Shaft 19, 20	170125	Lever, Shoe Release 3, 5	173602	Plate w/Stud 22
162792	Arm, Detent 19, 20	170193	Guard, Back Space 16	173604	Post, Spring 22
162793	Ratchet, 42T 19, 20	170198	Arm, Stop 6, 7	173606	Bail w/Hub 22
162794	Hub, Back Stop 19, 20	170199	Bracket, Anchor 11	173607	Lever 22
162795	Ratchet, 42T 19, 20	170201	Shaft w/Bearing 3, 5, 21	173609	Roller 22
162796	Cam 19	170202	Post, Guide 9	173614	Link w/Stud 22
162797	Plate, Adjusting 19, 20	170203	Lever, Slide Trip 9	173616	Lever w/Hub 22
162798	Roller 19, 20	170204	Bracket, Spring 9	173618	Bail 22
162799	Post, Spring 19, 20	170206	Post, Guide 14	173619	Bracket, Magnet 20
162800	Block, Stop 19, 20	170210	Block Assembly, Punch 13	173620	Bail, Armature 20
162802	Pawl, Detent 19, 20	170211	Arm, Rocker 14	173621	Cable w/Terminals 20
162803	Post, Drive Link 19	170215	Spring, Punch Block 13	173691	Cam 20
162804	Link, Drive 19	170216	Plate, Front 11, 13, 14, 22	173921	Modification Kit 11
162809	Spring 22	170217	Post 11	174439	Modification Kit 2, 28
162862	Bar, Mounting 9, 18	170218	Shaft, Feed Wheel 11	174441	Lever w/Bushing 28
162912	Guard, Rear 4	170219	Stud, Die Wheel 11	174442	Contact Assembly 28
162920	Chute, Chad 29	170220	Guide, Tape 11	174444	Spring, Contact 28
162930	Frame 4, 15	170225	Block, Tape Guide 12	174445	Bracket, Contact Mounting 28
162988	Bail, Retraction 15	170230	Knob 6	174446	Spring, Contact 28
162993	Block Assembly, Punch 13	170231	Guide, Upper 6	174447	Post 28
162994	Block Assembly, Punch 13	170232	Guide, Lower 6	174448	Guard 28
163009	Pinion, 21T 5	170233	Stud 6, 22	174449	Bracket 28
163010	Gear, 49T 5	170234	Bracket, Guide 6	174450	Cam 28
163015	Pinion, 28T 5	170235	Bracket, Spring 6	174451	Cam 28
163018	Gear, 49T 5	170236	Lever 6	174452	Spacer, .085" Thk 28
163019	Pinion, 21T 5	170237	Lever, Start 6	176266	Spring, Torsion 9
163020	Gear, 48T 5	170238	Bail, Reset 6	176286	Lever, Adjusting 21
163021	Pinion, 28T 5	170240	Frame 3, 5	176420	Modification Kit 2, 28
163022	Gear, 80T 5	170241	Screw, 6-40 Adjustable 11	176421	Modification Kit 2, 28
163023	Gear Set, 60 WPM 1,5	170242	Slide, Feed Hole Punch 12	176489	Guide 9
163024	Gear Set, 75 WPM 1,5	170244	Wheel, Die 11	176490	Bracket w/Hubs 9, 21
163025	Gear Set, 100 WPM 1,5	170245	Wheel, Feed 11	176491	Bracket Assembly 9
163114	Post, Spring 19, 20	170246	Slide w/Insulator 12	176628	Modification Kit 2, 20, 21, 22
163255	Nut, 6-40 Shoulder 19, 20	170247	Guide 12	176640	Guard, Tape 10
163326	Lever w/Hub 21	170264	Post, Guide 9	176647	Latch w/Hub 17
163327	Ring, Retaining 15, 21	170306	Modification Kit 29	179252	Modification Kit 29
163347	Modification Kit 2, 19, 21, 22	170767	Gear, 28T 3	179256	Chute, Chad 29
163351	Cam 19	170768	Gear, 80T 3	179573	Nut, 6-40 Hex 14, 21, 22
163674	Chute, Chad 29	170769	Gear, 32T 3	182909	Spring 6
164272	Modification Kit 29	170770	Gear, 56T 3	192493	Spring 6
164273	Chute, Chad 29	170778	Block Assembly, Punch 13	192499	Cam, Selector 3, 5
164275	Chute, Chad 29	170779	Wheel, Feed 11	192661	Post 15
164278	Chute, Chad 29	170788	Wheel, Die 11	192662	Link w/Stud 15
164279	Chute, Chad 29	170803	Bail, Retractor 13	192709	Link w/Hub 15
164300	Spacer, .1" Thk 12	170871	Gear, 35T 3	192793	Guard 18
164307	Spring, Punch Block 13	170872	Gear, 80T 3	192828	Plate w/Bushing 9, 10, 15
164386	Bracket, Magnet Mounting 8, 28	170879	Slide, Feed Hole Punch 12	193623	Cam, Selector 3
164511	Lever w/Hub 11	170907	Plate, Adjusting 20	193639	Lever w/Shaft 21
164513	Pawl, Feed 14	171695	Gear Set 3	193784	Screw, Contact 25
164515	Spring, Torsion 11	171696	Gear Set 3	193790	Lever w/Contact 25
164740	Rack, Range Finder 28	171697	Gear Set 3	193791	Lever w/Contact 25
164743	Shaft 28	172112	Depressor Assembly, Tape 12	193804	Armature 17
164790	Sleeve, Cam 4	172118	Bracket 12	193821	Bracket w/Post 17
164800	Spring, Punch Block 13	172632	Screw, 4-40 x 3/16 Hex 28	193822	Clamp 17
164801	Block, Tape Guide 12	172639	Spring, Torsion 22	193824	Latch w/Hub 17
		172983	Bracket, Spring 14	193852	Spring 3
		172984	Bracket, Spring 13		

NUMERICAL INDEX (Continued)

Part Number	Description and Page Number	Part Number	Description and Page Number	Part Number	Description and Page Number
193966	Bracket w/Stud 10	194179	Bearing, Eccentric 21	199403	Screw, 4-40 Shoulder 22
193968	Post 10	194180	Cam 21	199506	Gasket 13
193969	Post 10	194181	Camsleeve, Feed-Out 21	199825	Bail w/Hub 22
193970	Plate, Clamp 10	194197	Spring, Torsion 22	199859	Bushing 21
193973	Platform, Tape 10	194862	Extension 29	199992	Bail, Stripper 7
193974	Depressor, Tape 10	194992	Modification Kit 13,27	304532	Spring 21
193976	Bail, Rocker 15	194993	Guide, Tape 13	304794	Guide Assembly, Tape 24
193987	Bracket, Roller 10	195182	Pinion, 20T 5	304897	Depressor, Tape 24
193993	Modification Kit 10, 15	195183	Gear, 52T 5	305638	Bracket, Guide 14
194065	Contact Assembly 18	195184	Gear Set, 67 WPM 5	306755	Lever, Marking Lock 6
194066	Modification Kit 2, 18	195231	Spring, Compression 10	310127	Bracket 12
194067	Bracket, Mounting 18	195233	Roller 10	310128	Stud 12
194068	Bracket, Contact 18	195251	Armature Selector 8	310129	Extension 12
194100	Block Assembly, Punch 13	195634	Modification Kit 8	310132	Depressor Assembly, Tape 12
194117	Plate, Clamp 10	195673	Block Assembly, Punch 13	320408	Terminal, Spade Type 8
194118	Spring, Torsion 10	196505	Lever, Push 7	320410	Terminal, Spade Type 8,20,25,27
194122	Platform w/Guide, Tape 10	196506	Knob 7	320416	Terminal, Ring Type 25
194123	Screw, 4-40 Spl 10	196534	Bracket, Guide 7	320418	Terminal, Ring Type 17,18,27
194162	Bail, Reset 14	197971	Bracket, Tape Guide 23	324472	Guard, Gear 4
194164	Bearing, Ball 21, 22	197972	Guide, Tape 23	324472	Sleeve, Cam 4
194167	Modification Kit 2, 18	197973	Plate, Cover 23	327120	Post 10
194168	Lever, Cam Follower 21	197982	Cable 25		