

28 SINGLE MAGNET TYPING REPERFORATOR UNITS

WIRING DIAGRAMS

1. GENERAL

1.01 This section shows the wiring of the LPR4AWA (Bell 28A), LPR7AWA (Bell 28B), LPR22 (Bell 28C), LPR33 (Bell 28C-1), LPR23 (Bell 28D), LPR22 (Bell 28E), LPR23 (Bell 28F), LPR32 (Bell 28G), LPR42 (Bell 28J), LPR54 (Bell 28K), LPR46 (Bell 28L), and LPR47 (Bell 28M) typing reperforator units.

1.02 Wiring for the 28A and 28B typing reperforator units was previously covered in Section 573-121-400 covering the wiring of the 28 typing reperforator base.

1.03 Notes on the wiring diagrams explain symbols used and point out special conditions. These diagrams show the origin and termination of the various leads as well as the color coding of the leads for each of the components.

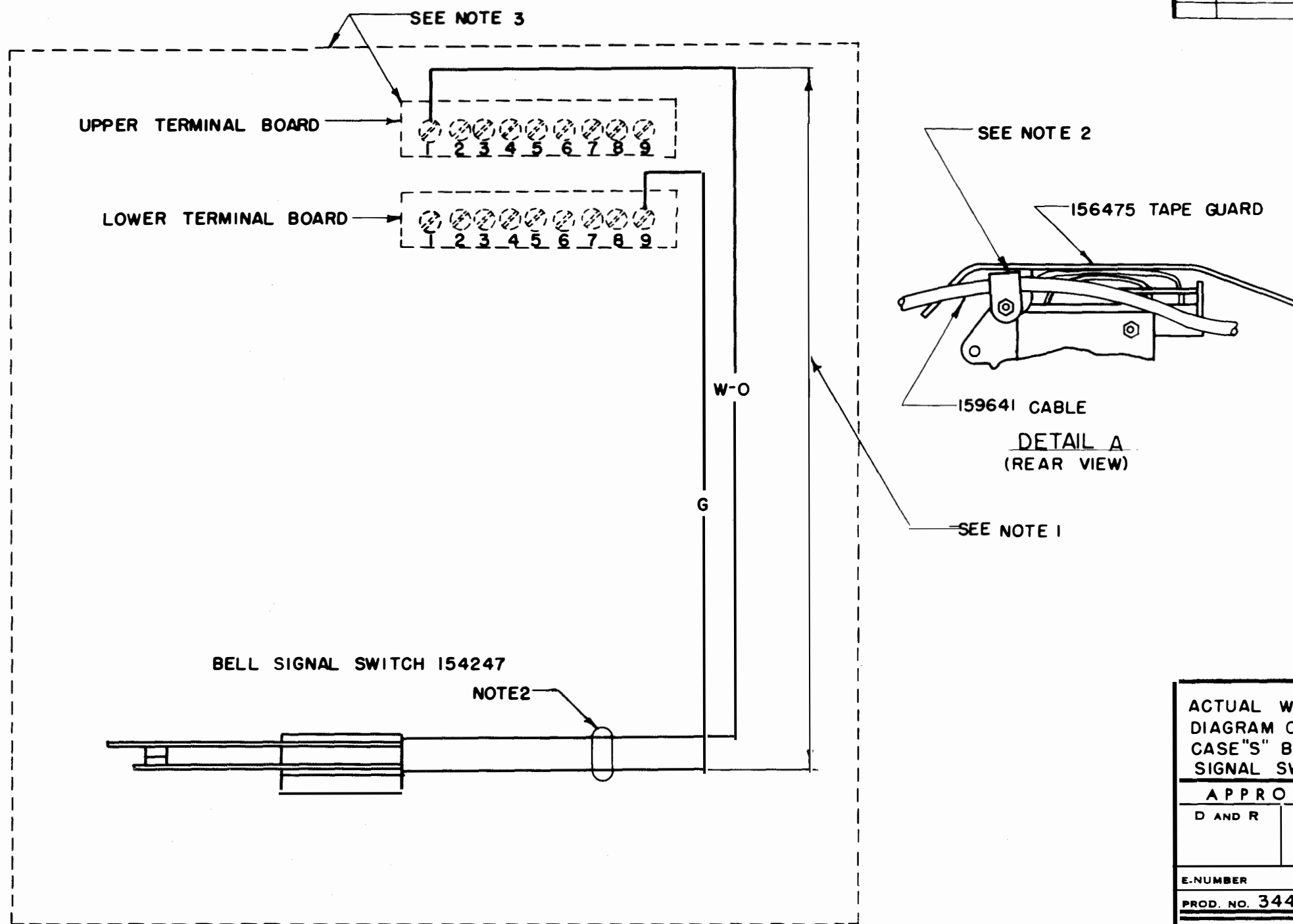
1.04 The LPR4AWA (Bell 28A) and LPR7AWA (Bell 28B) are covered in 3442WD and 3544WD each of which consist of one sheet. The LPR33 (Bell 28C-1) is covered in the one unnumbered diagram. The other typing reperforators are covered in the one sheet of 3628WD.

3442 WD

ISSUE	DATE	AUTH. NO.
B	5-20-59	28-11062-1

**NOTES**

1. ROUTE UPPER CASE "S" BELL SWITCH CABLE ALONG SELECTOR MAGNET CABLE (WHEN LPR IS MOUNTED ON BASE) BY WINDING SWITCH CABLE AROUND THE SELECTOR CABLE A FEW TIMES.
2. ROUTE CABLE THROUGH CABLE CLAMP ON TAPEGUARD.
3. LRB 3 BASE COMPONENTS SHOWN IN BROKEN LINES - - - - .



ACTUAL WIRING  
DIAGRAM OF UPPER  
CASE "S" BELL  
SIGNAL SWITCH

**APPROVALS**

D AND R      E OF M

E-NUMBER

PROD. NO. 3442 WD

DATE 9-26-57

P.D. FILE NO. 1-49.65AA

DRAWN R.H. B CHKD. *GR*

ENGD G.C.M. APPD. *G.C.M.*

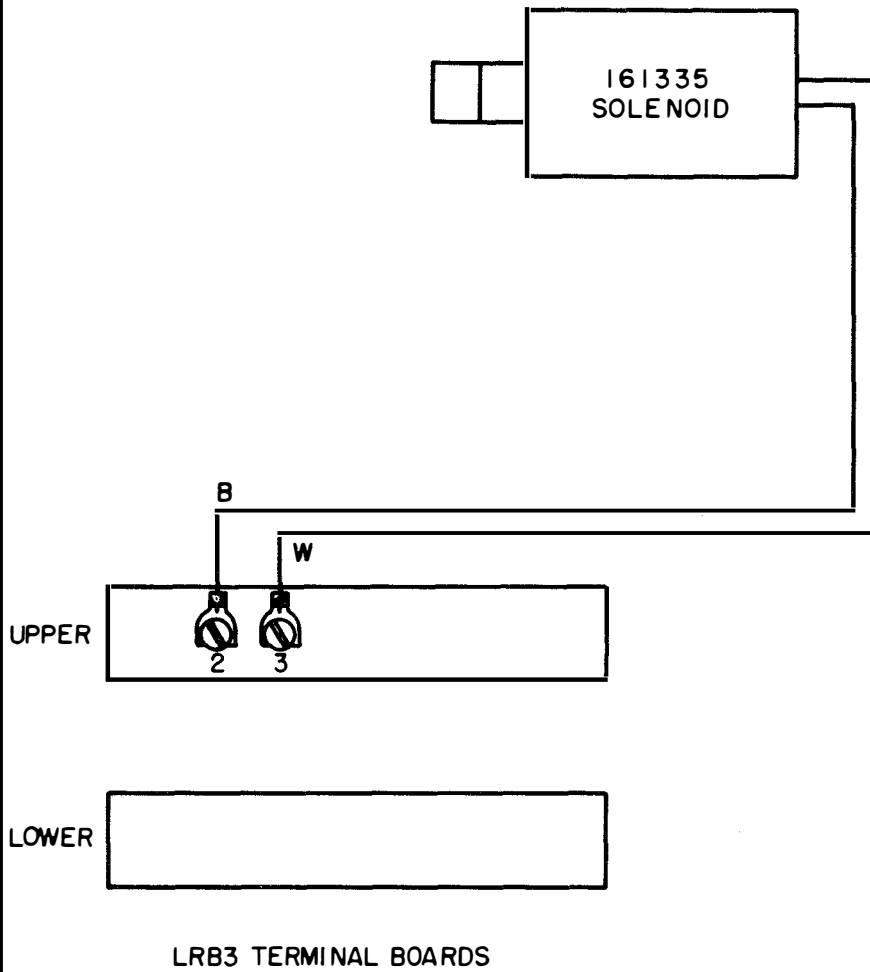
**TELETYPE  
CORPORATION**

3442 WD

3544 WD

REVISIONS

ISSUE	DATE	AUTH. NO.



ACTUAL WIRING  
DIAGRAM LETTERS  
FEEDOUT -LPR-7

APPROVALS

D AND R

E OF M

E-NUMBER

PROD. NO. 3544 WD

DATE: 6-2-58

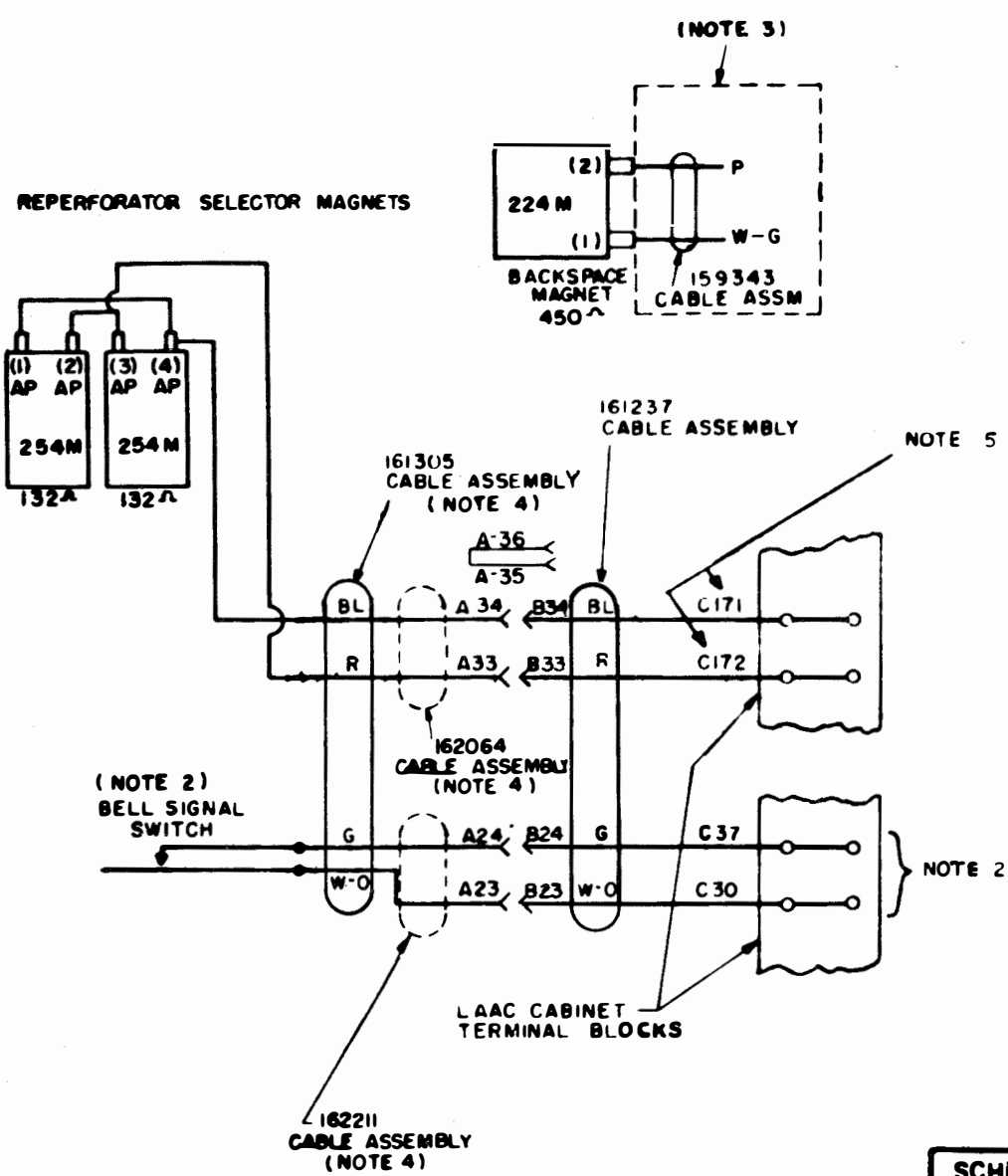
P.D. FILE NO. 2-35/49.65.65A

DRAWN. E.M. CHKD. *R.R.S.*

ENGD. J.A.C. APPD. *gwk*

TELETYPE  
CORPORATION

3544 WD



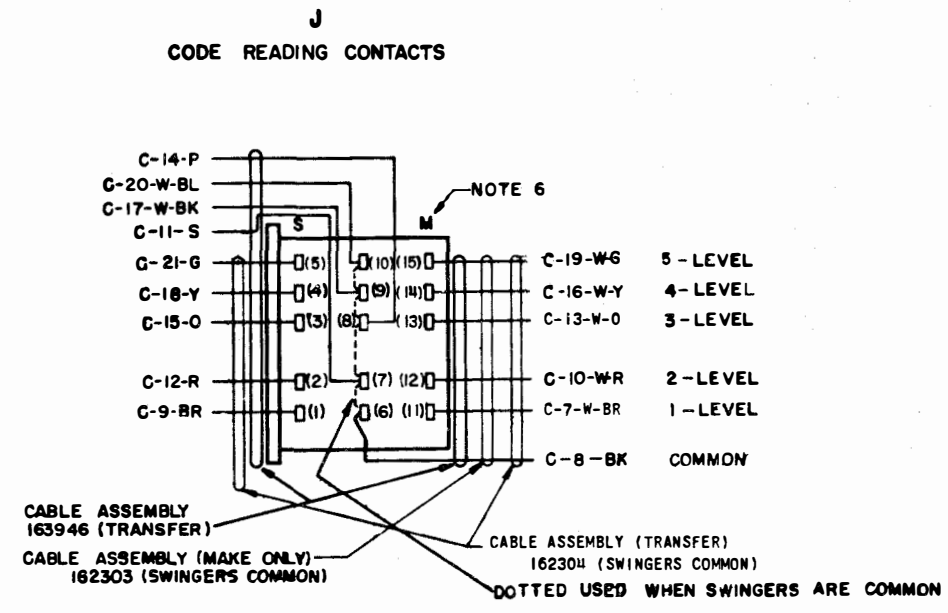
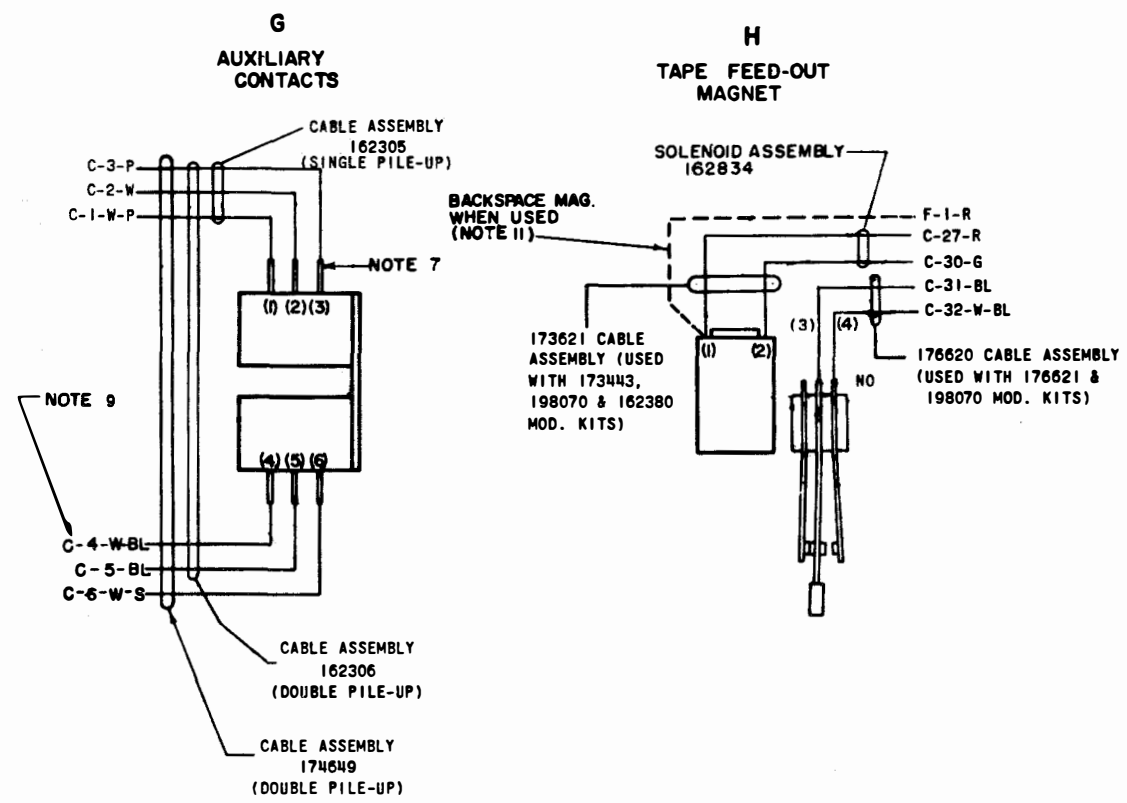
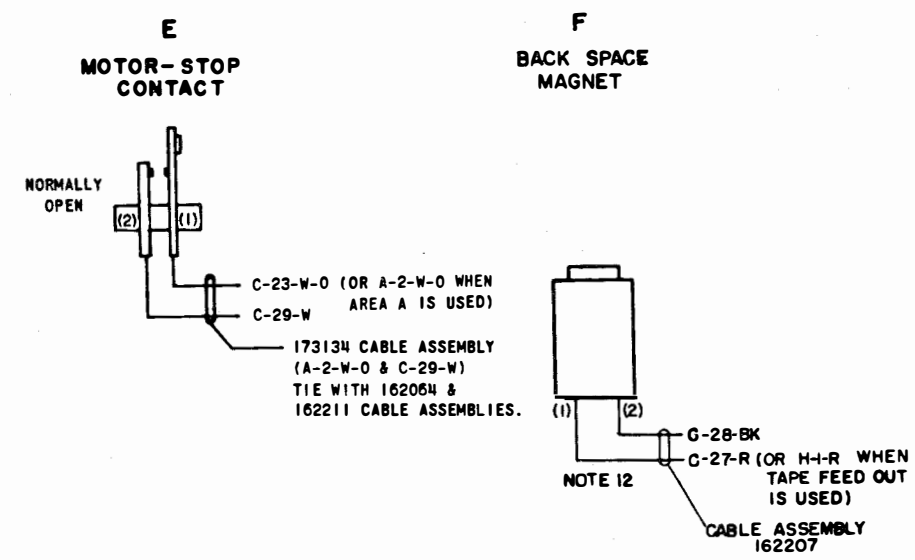
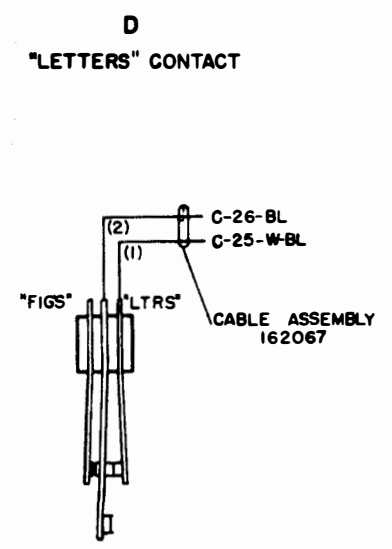
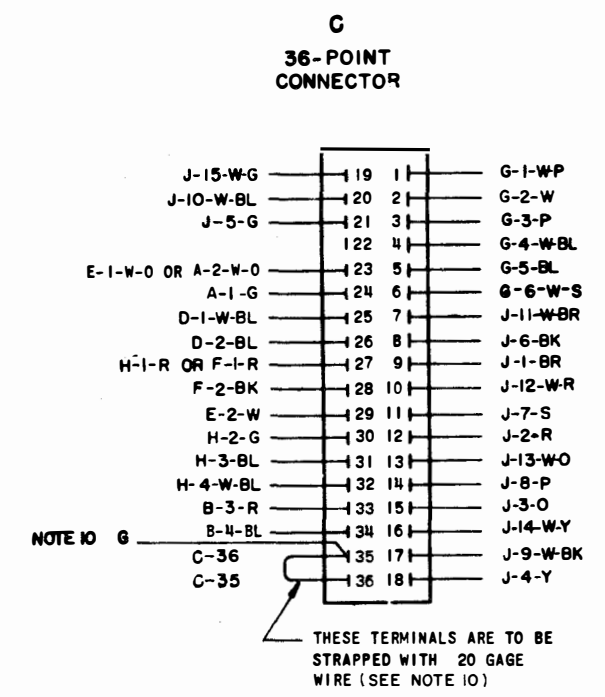
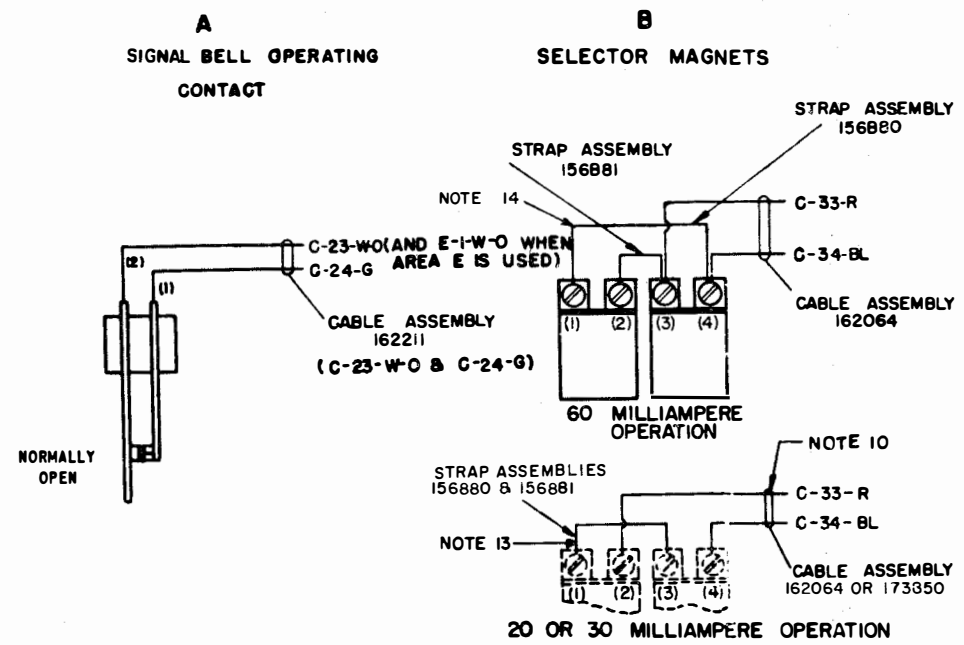
**NOTES:**

- 1. REPERFORATOR SELECTOR MAGNETS SHOWN FOR .060 AMP OPERATION. FOR .020 AMP OPERATION REMOVE AND ADD CONNECTIONS AS TABULATED BELOW.
- 2. BELL SIGNAL SWITCH NOT USED ON LRPE 6. TIE BACK W-O AND G WIRES ALONG CABLE 161237 WHEN USED WITH LRPE 6
- 3. PART OF LAK 4 & LAK 18
- 4. LPR 51 & 56 USE 162064 & 162211 CABLE ASSEMBLIES. LRPE 6 USES 162064 CABLE ASSEMBLY. LPR 77 USES 162064 CABLE ASSEMBLY.
- 5. WHEN THESE TERMINALS ARE NOT AVAILABLE, THE 159396 MODIFICATION KIT TO ADD TERMINALS C-19 TO C-100, MAY BE ORDERED.

	CONNECTION REMOVED	CONNECTION ADDED
.020 AMPS.	A33- AP3 AP2- AP3 API- AP4	A33- AP2 API- AP3

**SCHEMATIC WIRING  
DIAGRAM-LPR 10,33  
56,51,77AND LRPE 6**

- 1. WIRING LEGEND:**  
  
 DISTANT TERMINATING AREA  
 DISTANT TERMINATING DESIGNATION  
 WIRE COLOR CODE
- 2. COLOR CODE:**  
 BK - BLACK      G - GREEN  
 BR - BROWN    BL - BLUE  
 R - RED         P - PURPLE  
 O - ORANGE    S - SLATE  
 Y - YELLOW    W - WHITE
- 3. TERMINAL DESIGNATIONS ENCLOSED IN PARENTHESES ARE FOR REFERENCE AND ARE NOT MARKED ON COMPONENTS.**
- 4. TERMINALS ON CONNECTOR SHOWN AS VIEWED FROM SOLDER END.**
- 5. NORMALLY OPEN (NO) AND NORMALLY CLOSED (NC) CONTACTS ARE SHOWN WHEN THE REPERFORATOR IS IN THE STOP (IDLE) POSITION.**
- 6. THE SPACING (S) SIDE ON THE CODE READING CONTACTS ARE NORMALLY CLOSED. THE MARKING (M) SIDE OF THE CODE READING CONTACTS ARE NORMALLY OPEN.**
- 7. WHEN THE AUXILIARY CONTACTS ARE OPERATED FROM A SINGLE CYCLE FUNCTION CAM, THE CONTACTS NEAREST THE MOUNTING BRACKET ARE NORMALLY CLOSED. WHEN THE AUXILIARY CONTACTS ARE OPERATED FROM A DOUBLE CYCLE FUNCTION CAM, THE CONTACTS FARTHEST FROM THE MOUNTING BRACKET ARE NORMALLY CLOSED.**
- 8. GENERAL NOTE: WIRING OF INDIVIDUAL COMPONENTS IS DETERMINED BY REFERRING TO THE CABLE ASSEMBLIES SPECIFIED ON THE UNIT B/M.**
- 9. WHEN USING THE 162306 CABLE ASSEMBLY WITH THE LRPEB, CONNECT THE W-BL WIRE (NORMALLY CONNECTED TO 64) TO 66.**
- 10.**
- 11. WHEN COMMON CONNECTION IS USED, D.C. MUST BE PROVIDED FOR MAGNETS OTHER THAN 22MM WHICH OPERATES ON A.C. OR D.C.**
- 12. FOR WIRING OF BACKSPACE MAGNET ON LAK KEYBOARD MOUNTED PERFORATORS, REFER TO ASSOCIATED LAK WIRING DIAGRAM.**
- 13. SELECTOR MAGNETS MUST BE STRAPPED FOR 60 MILLIAMPERE OPERATION WHEN 179615 AND 179616 R.F. SUPPRESSION MODIFICATION KITS ARE USED WITH REPERFORATOR SET.**
- 14. ON UNITS EQUIPPED WITH THE 173850 SHIELDED CABLE, THE STRAP BETWEEN TERMINALS C-35 AND C-36 IS OMITTED AND THE "G" WIRE OF THE CABLE IS CONNECTED TO TERMINAL C-35. IF THE UNIT EQUIPPED WITH THE 173850 SHIELDED CABLE IS USED ON A BASE NOT CONTAINING PROVISIONS FOR R.F. SUPPRESSION (INCLUDING BELL SYSTEM) REMOVE THE "G" WIRE FROM TERMINAL C-35 AND ADD STRAP BETWEEN TERMINALS C-35 AND C-36.**
- 14. THE LPR 66 SELECTOR MAGNET ASSEMBLY SHALL BE STRAPPED IN PARALLEL FOR 500 MA OPERATION**



**3628WD**

**REVISIONS**

ISSUE	DATE	AUTH. NO.
2	4-13-59	28-10974
3	5-20-59	28-11062-1
4	8-4-59	28-11499
5	4-6-60	28-12999
6	5-3-60	28-13251
7	9-7-60	28-13795
8	10-26-60	28-14088
9	12-19-60	28-14370
10	5-19-61	69691
11	5-19-61	69791
12	11-16-61	71633
13	7-10-62	74013
14	2-9-63	75940
15	2-9-63	75958
16	5-31-63	76926
17	12-30-63	79205
18	10-5-64	83406
19	3-31-65	86803
20	1-6-66	89856
21	5-9-66	90891

**ACTUAL WIRING DIAGRAM FOR TYPING AND NON-TYPING REPERFORATOR LPE LPE LRPE**

**APPROVALS**

D AND R  
 E OF M

**E-NUMBER**

PROD. NO. 3628WD

DATE 11-17-58

R.D. FILE NO. 14-49.65AA

DRAWN R.B.B. CHKD.

ENSD. D.C.L. APPD.

**TELETYPE CORPORATION**

**3628WD**