

28 PERFORATOR-TRANSMITTER BASE
WIRING DIAGRAM

1. GENERAL

1.01 This section shows the wiring for the 28A, 28B, 28D, 28E, 28F, 28K, 28G, 28G-1, 28H, 28J, 28J-1, and 28LA perforator-transmitter bases for use with the 28 automatic send-receive set.

1.02 This section is reissued to add the wiring for the 28G-1 and 28K perforator-transmitter bases. The drawing showing the wiring for the 28D, 28E, 28F, and 28K perforator-transmitter bases was changed to:

- (a) Remove the jumper wire on the K-KT-T switch.
- (b) Add a white-purple (W-P) wire from terminal 3 of the K-KT-T switch to terminal 7 of the keyboard terminal block.
- (c) Add a jumper between terminals 1 and 7 of the keyboard terminal block.

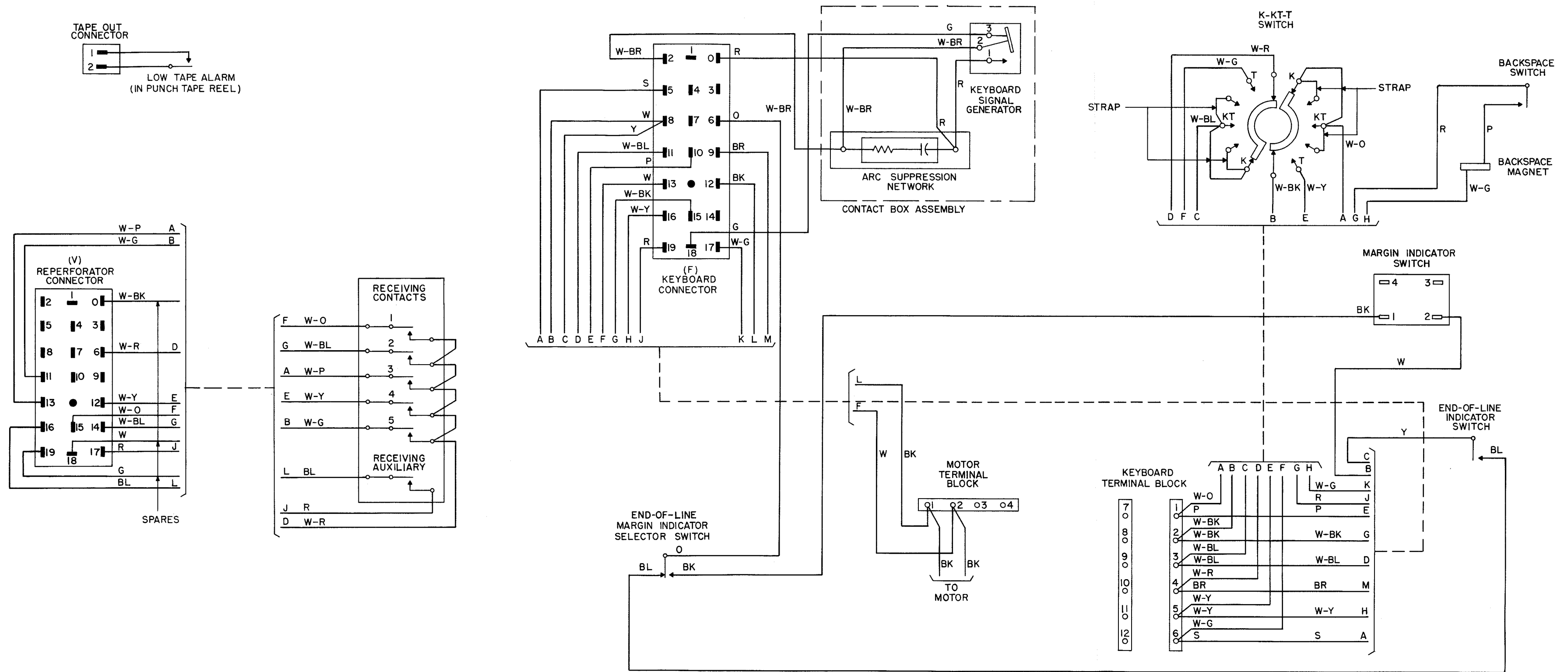


Figure 1 - 28A Perforator-Transmitter-Base

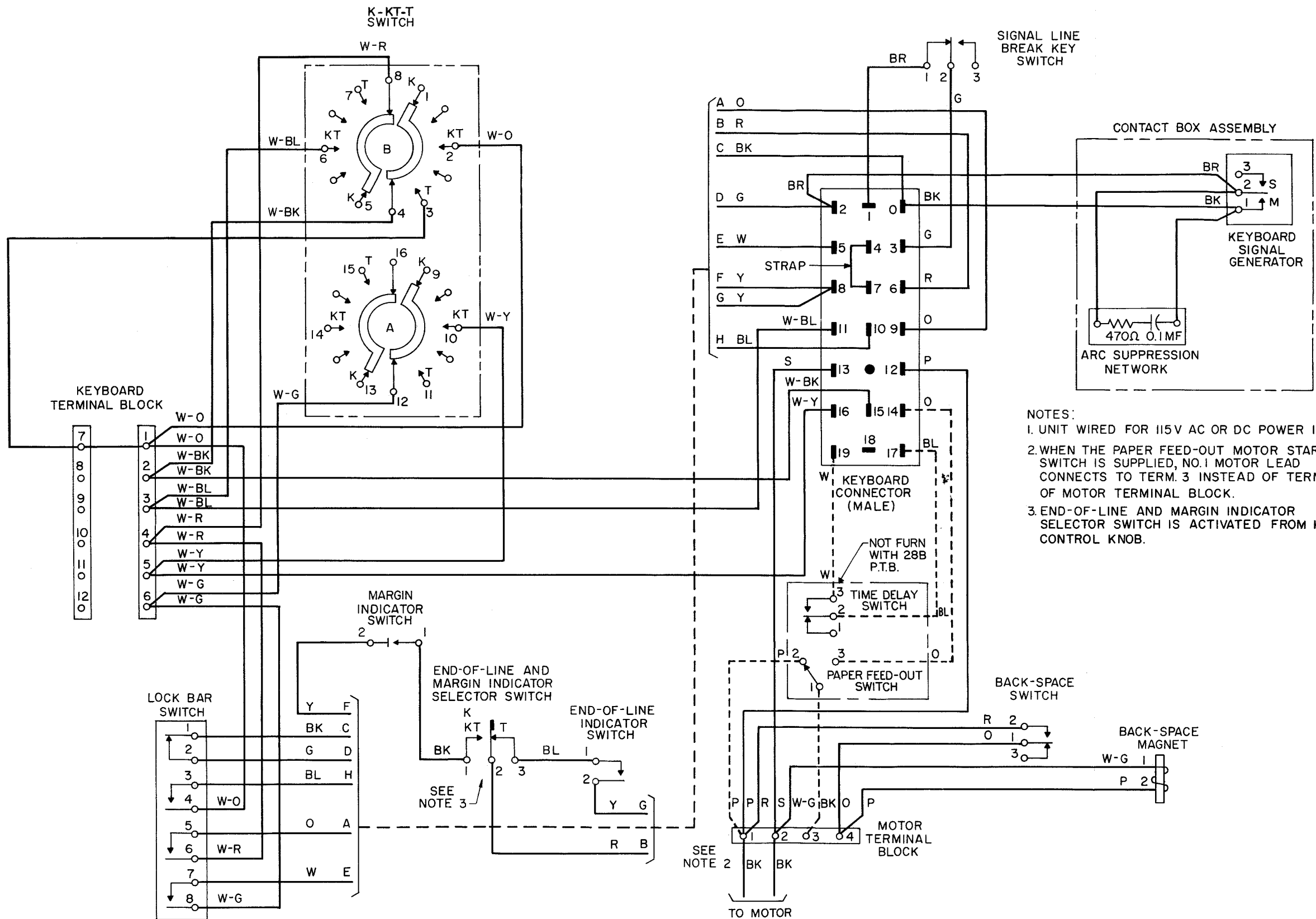


Figure 2 - 28B Perforator-Transmitter-Base

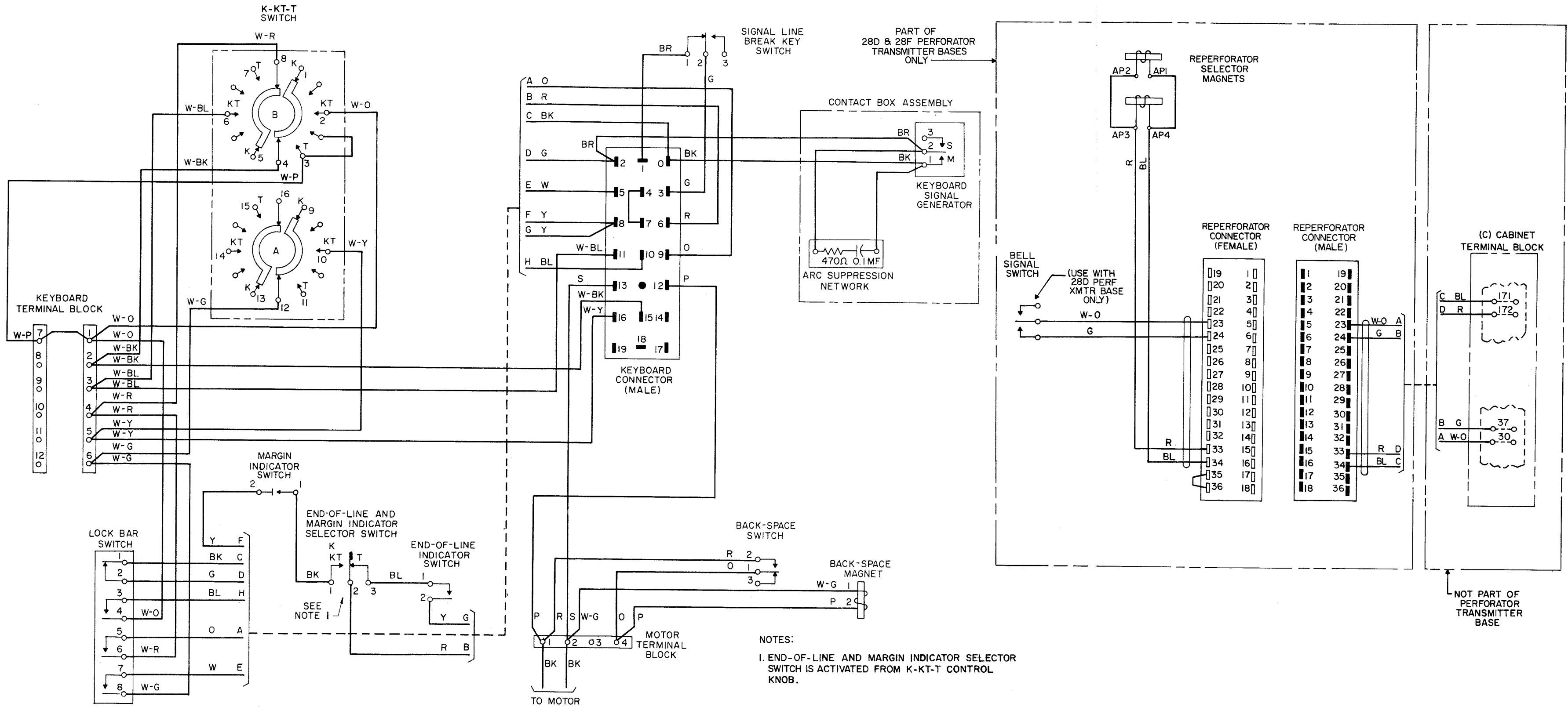


Figure 3 - 28D, 28E, 28F, and 28K Perforator-Transmitter-Base

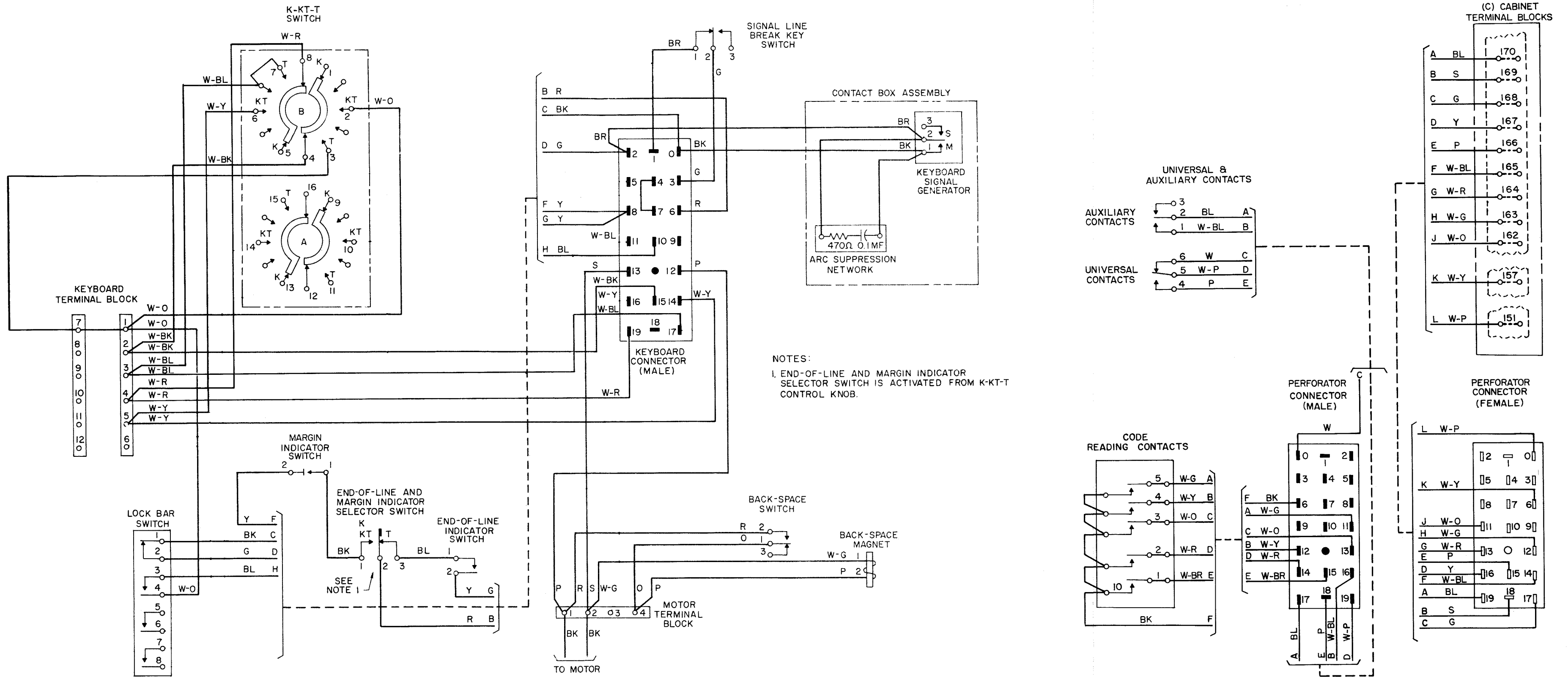


Figure 4 - 28G and 28G-1 Perforator-Transmitter-Base

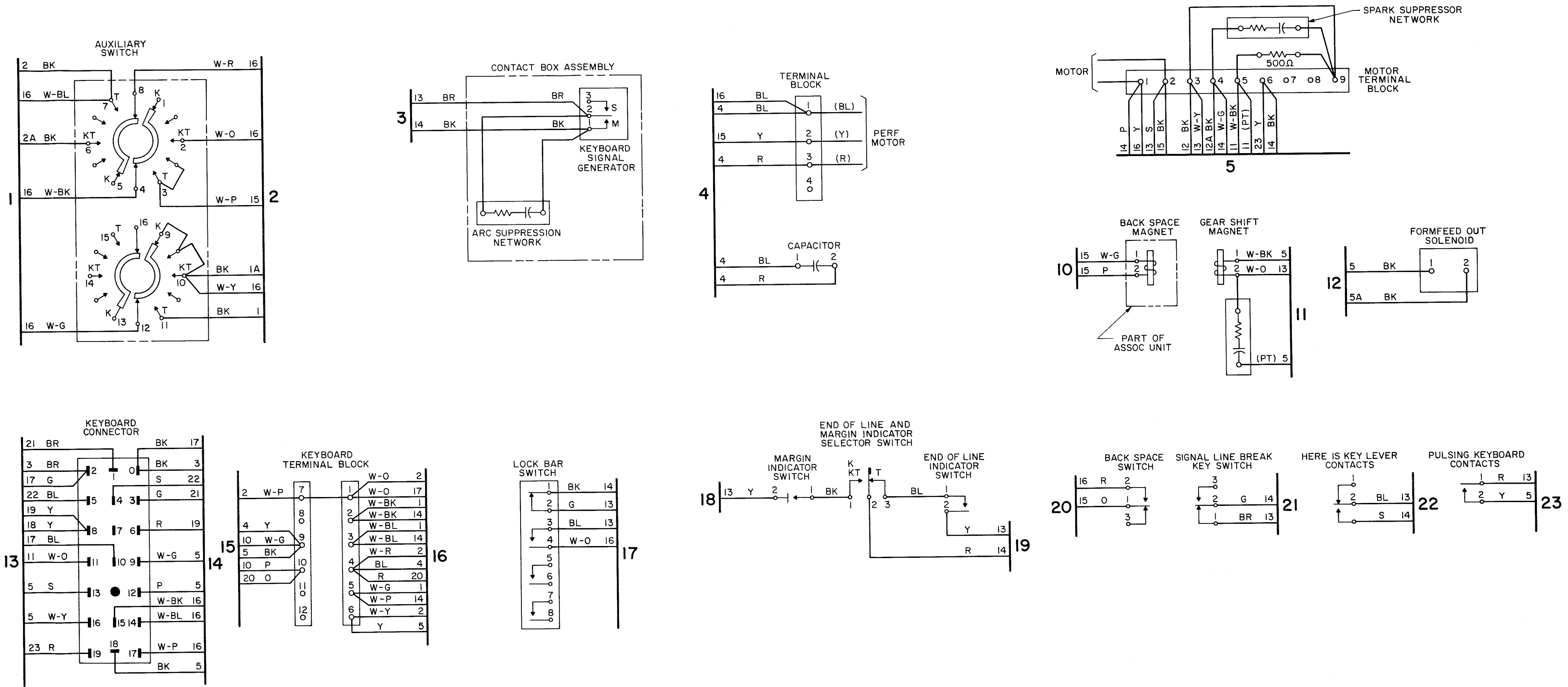


Figure 5 - 28H Perforator-Transmitter-Base

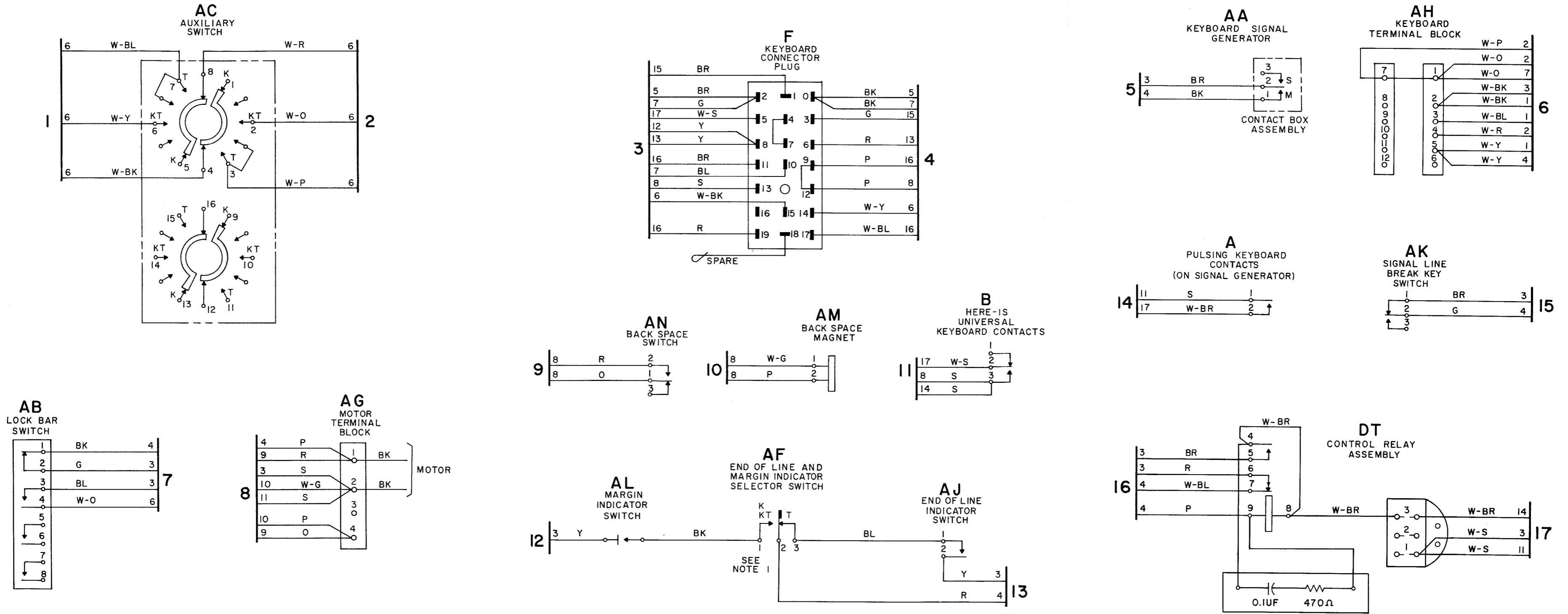


Figure 6 - 28J Perforator-Transmitter-Base

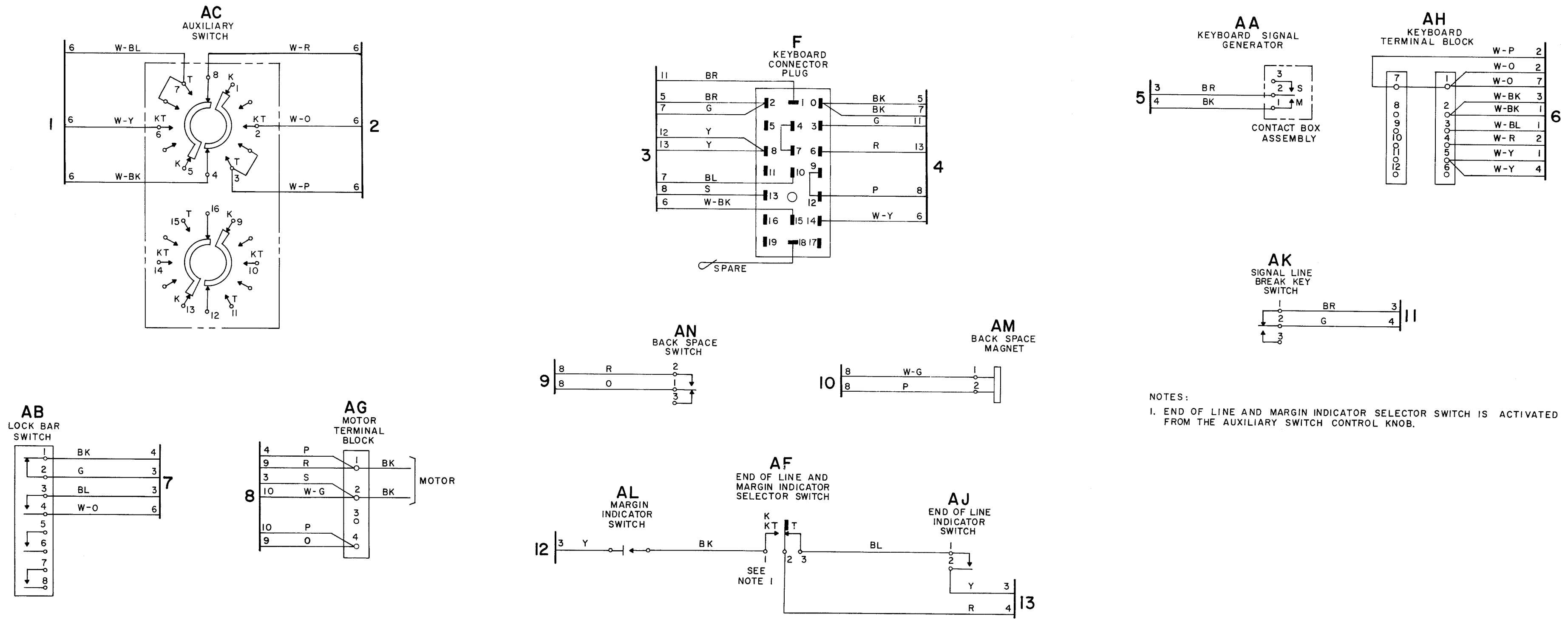
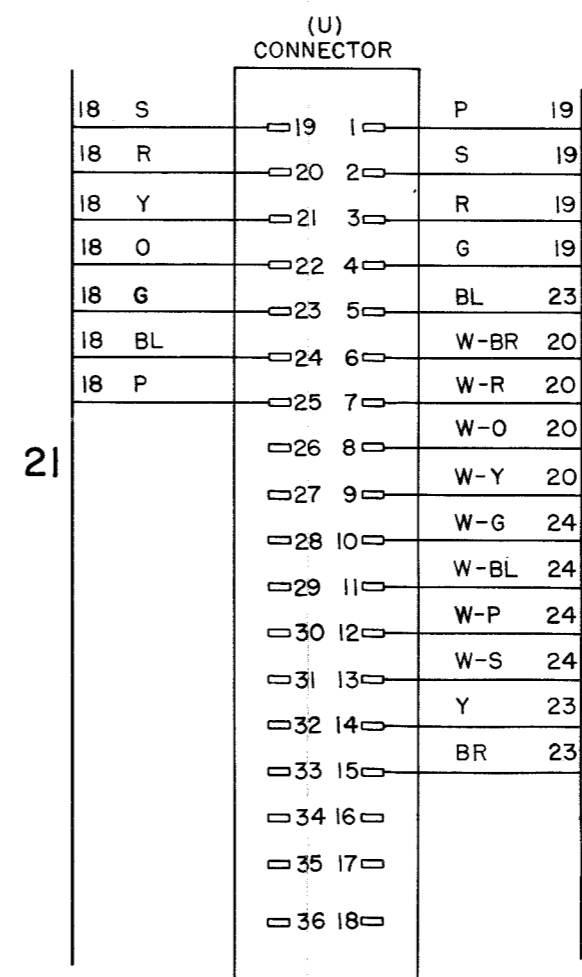
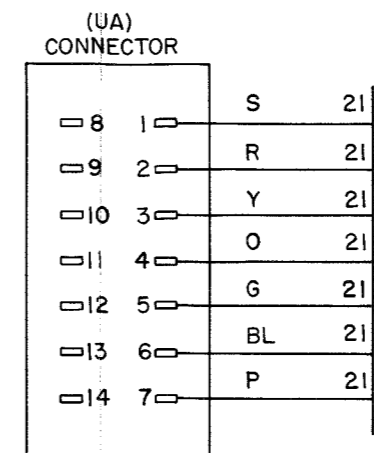
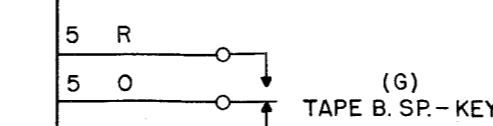
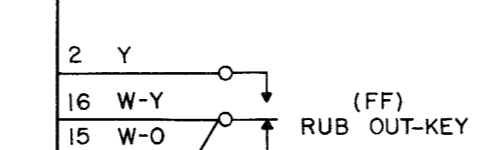
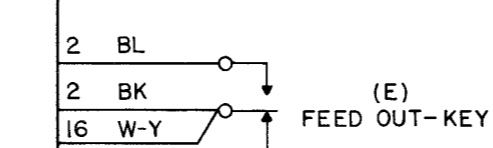
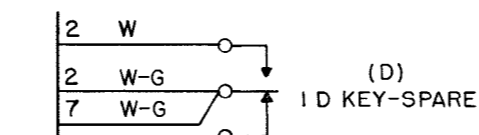
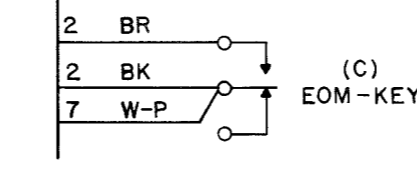
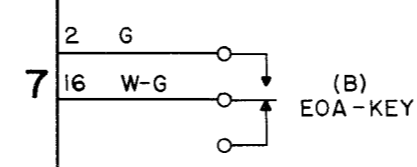
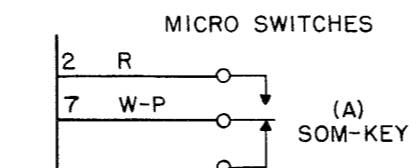
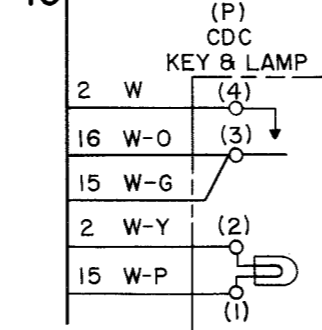
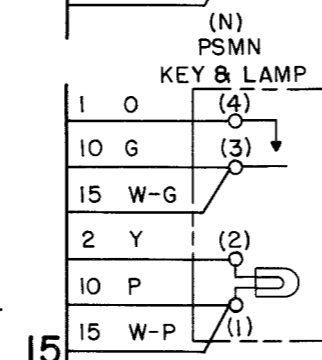
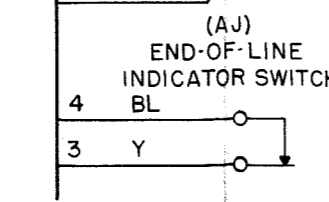
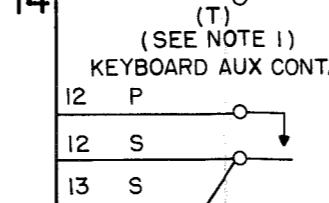
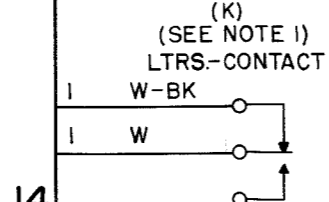
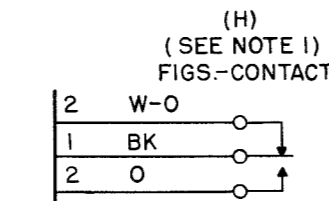
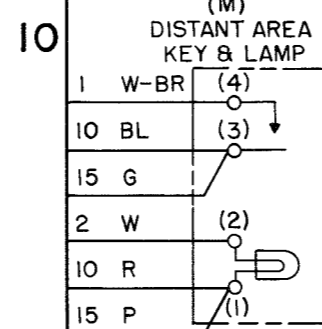
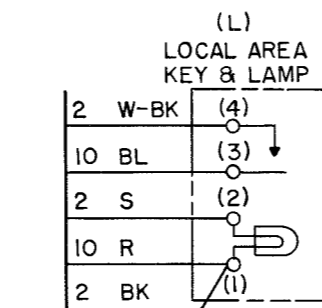
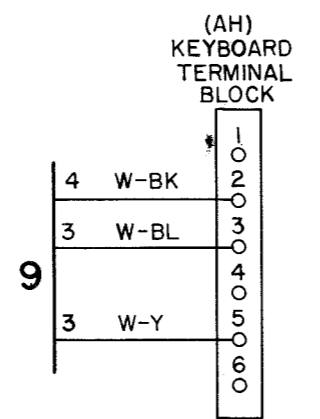
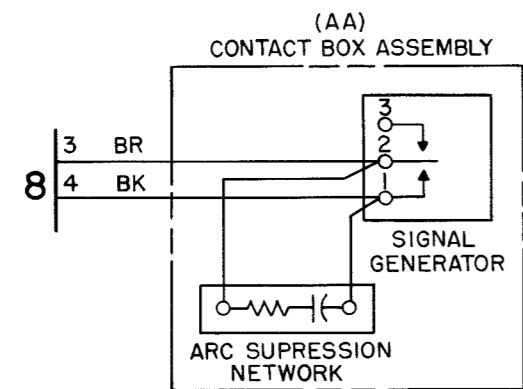
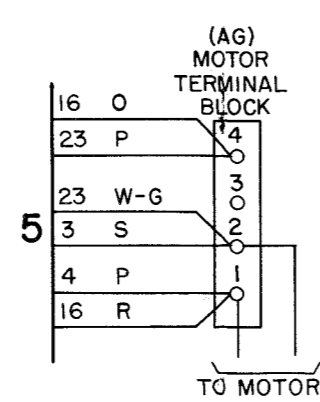
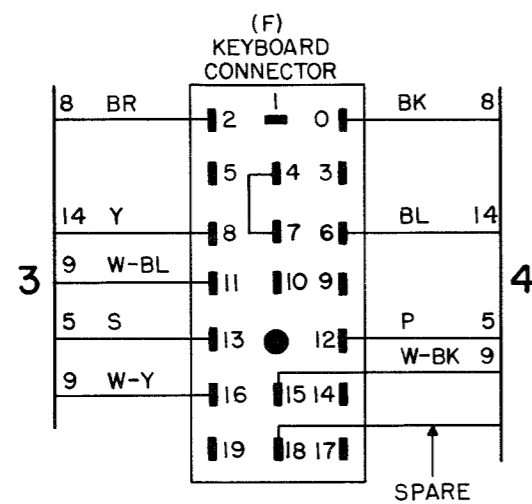
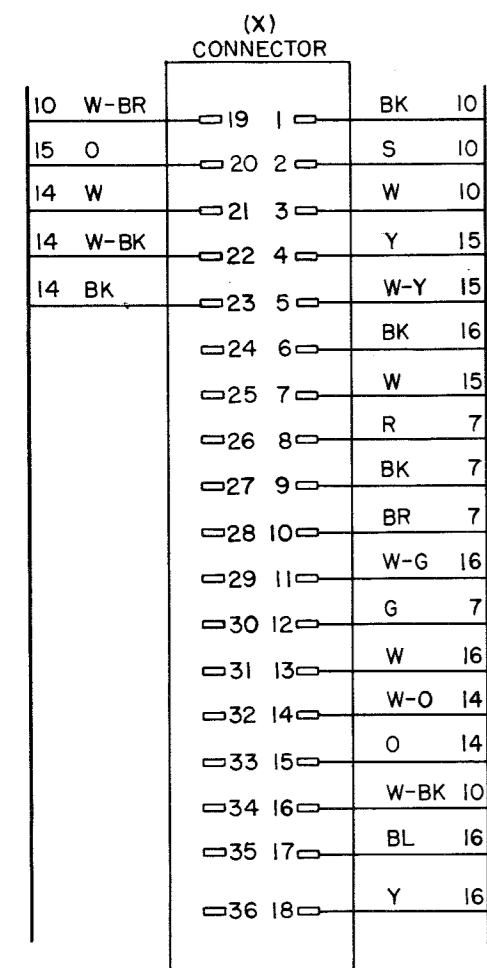
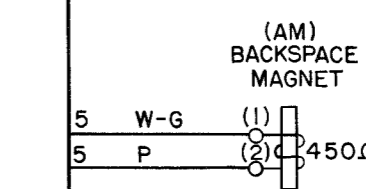
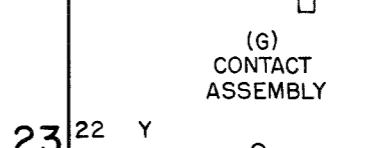
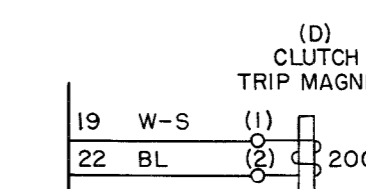
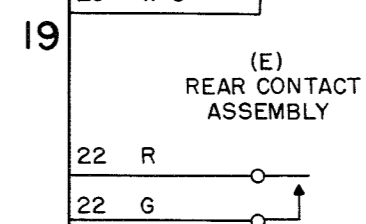
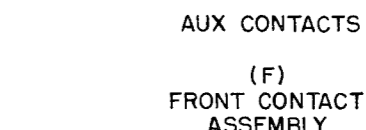


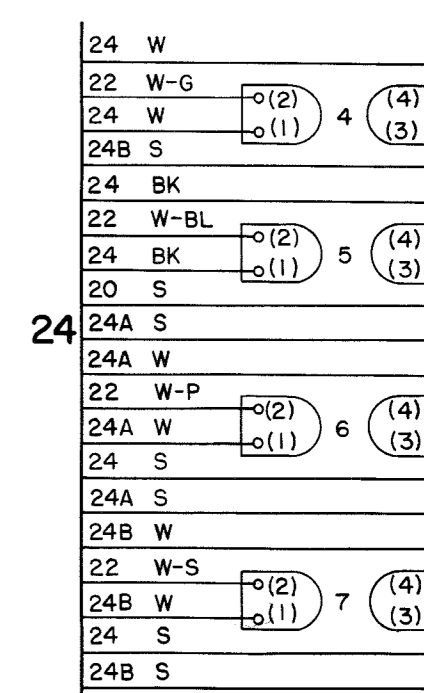
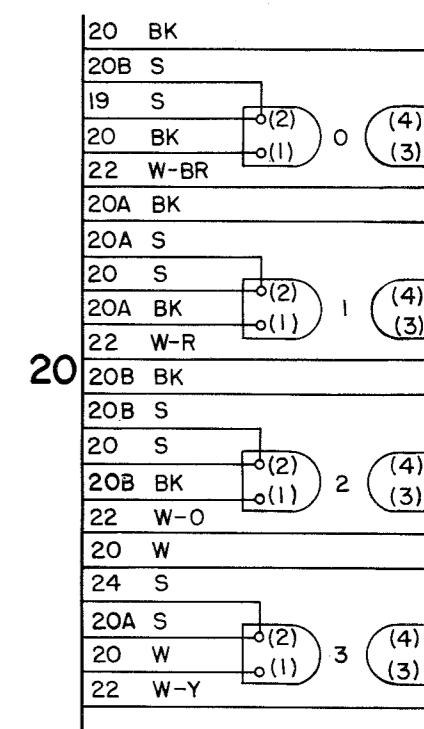
Figure 7 - 28J-1 Perforator-Transmitter-Base



REPERFORATOR WIRING



(C) SELECTOR MAGNETS (RESISTANCE 340Ω)



NOTES:
1. CONTACTS SHOWN IN STOP POSITION.

Figure 8 - 28LA Perforator-Transmitter-Base