

28 REPERFORATOR-TRANSMITTER SET  
DISASSEMBLY AND REASSEMBLY

1. GENERAL

1.01 This section describes the method for disassembling the 28 reperforator-transmitter set and stand. Where necessary, it also describes the method used to reassemble the equipment. For additional information refer to the section covering the general disassembly and reassembly instructions.

2. DISASSEMBLY AND REASSEMBLY

A. 28 Reperforator-Transmitter Set

2.01 To disassemble a 28 reperforator-transmitter set, remove the 28 reperforator-transmitter unit from the 28A reperforator-transmitter stand as follows:

- (1) Remove the tape-winder drive belt from the tape-winder drive pulley.

- (2) Disconnect all plugs from their connectors located on the frame of the reperforator-transmitter stand.

- (3) Loosen the three captive screws that secure the unit to the stand.

- (4) Lift the unit from the stand.

B. 28A Reperforator-Transmitter Stand

Note: Before proceeding with the disassembly of the stand, remove the tape-supply and take-up reels and the intermediate tape storage bin. After reassembly, route the tape as shown in Figure 1 and thread the tape onto the tape winder reel, fold the end of the tape, and insert it, chad side up, into the slot in the right-hand reel core.

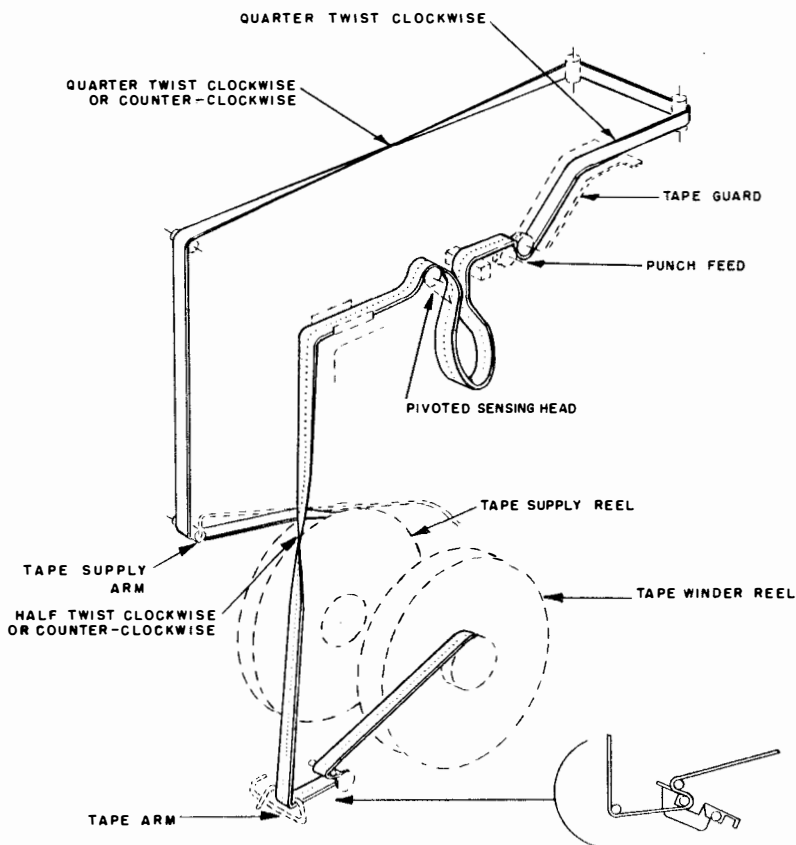


Figure 1 - Tape Routing

## SECTION 573-104-702

### 2.02 Tape Winder Assembly:

- (1) Remove the two screws and lockwashers that secure the mounting bracket for the capacitor to the tape-winder base plate.
- (2) Remove the two screws, lockwashers, and flat washers that secure the support bracket to the tape-winder support bracket.
- (3) Remove the four screws, lockwashers, and flat washers that secure the tape winder assembly to the frame of the stand.
- (4) Remove tape winder assembly.

### 2.03 Clutch Shaft Assembly:

- (1) Remove the drive-shaft-gear-hub mounting screw and lockwasher.
- (2) Remove the drive shaft gear and hub.

- (3) Remove the drive shaft belt.
- (4) Unhook the stoplever spring.
- (5) Remove the two screws, lockwashers, and flat washers that secure the drive-shaft gear bracket to the tape-winder support bracket.
- (6) Remove the drive-shaft gear bracket with the stoplever attached.
- (7) Remove the two screws, lockwashers, and flat washers that secure the outer clutch bearing bracket to the outer plate.
- (8) Remove the outer clutch bearing bracket.
- (9) Remove the two screws, lockwashers, and flat washers that secure the inner bearing plate to the outer plate.
- (10) Remove the clutch shaft assembly.