

28 REPERFORATOR-TRANSMITTER SET

LUBRICATION

CONTENTS	PAGE
1. GENERAL	1
2. LUBRICATION DETAILS	1
A. Nontyping Reperforator Unit	1
B. Typing Reperforator Unit	1
C. Transmitter-Distributor Unit	1
D. Gears and Tape Winding Mechanism	1
E. Motor Unit	1
F. Stand	1
Clutch-shaft and intermediate-gear assembly	2
Drive shaft assembly	2
Stop lever and tape arm mechanism	3
Tape alarm mechanism	3

1. GENERAL

1.01 This section, the sections referred to in this section, and the teletypewriter general lubrication section, provide the complete lubrication procedures for the 28 reperforator-transmitter set.

1.02 The lubrication symbols used herein are the same as those in the general section. However, the symbol O is used in this section to mean only one drop of oil. The symbol O2 is used to specify two drops of oil.

1.03 Lubrication of the 28 reperforator-transmitter set, before it is placed in service, should be governed by the principles given in the section covering the preparation of teletypewriter apparatus for installation. After a few weeks in service, the set should ordinarily be relubricated to make sure that all lubrication points receive lubricant. Thereafter, unless otherwise specified by the local regulations, the recommended lubrication intervals given in the individual sections for the components of the

reperforator-transmitter set may be used as a guide for use under normal operating conditions.

2. LUBRICATION DETAILS

A. Nontyping Reperforator Unit

2.01 Refer to the section covering 28 single magnet nontyping reperforator lubrication.

B. Typing Reperforator Unit

2.02 Refer to the section covering 28 single magnet typing reperforator lubrication.

C. Transmitter-Distributor Unit

2.03 Refer to the section covering 28 transmitter-distributor unit lubrication.

D. Gears and Tape Winding Mechanism

2.04 Refer to the section covering 28 reperforator-transmitter unit lubrication.

E. Motor Unit

2.05 Refer to the section covering 28 motor unit lubrication.

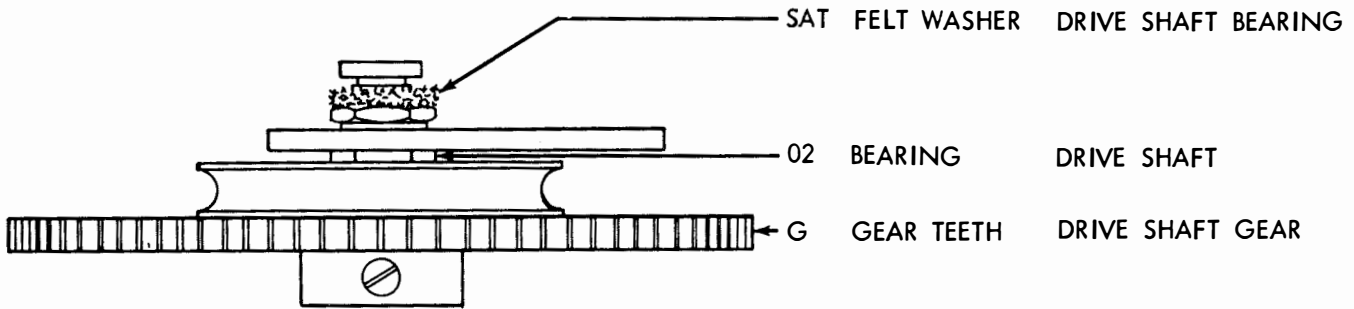
F. Stand

Note 1: Lubricate every 500 hours of operation or every six months, whichever occurs first.

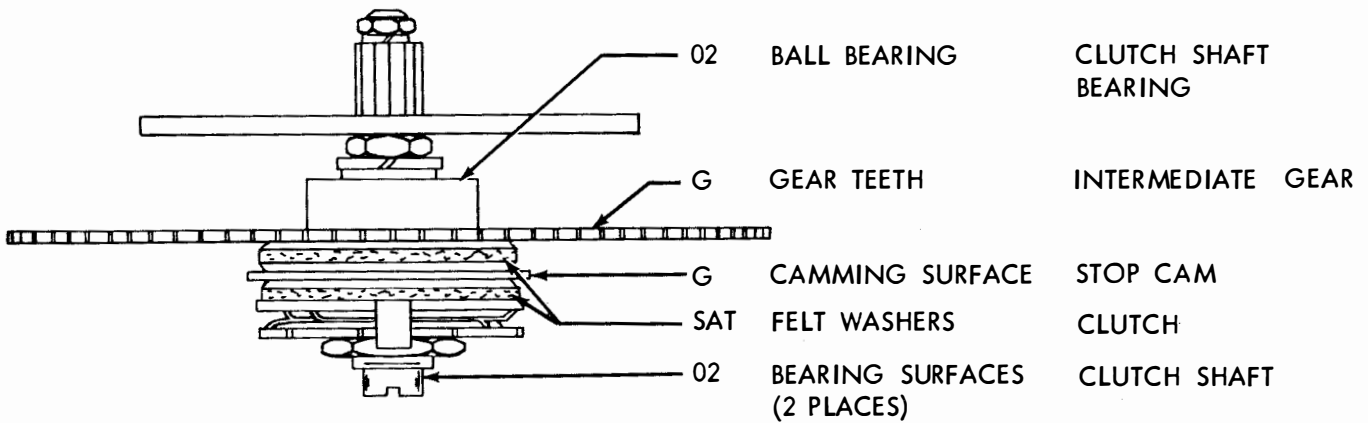
Note 2: Do not lubricate the tape-winder-reel drive gear or pinion, the tape-winder and tape-supply-reel shaft bearings, or the tape-puller-shaft nylon bearings in the tape storage bin.

SECTION 573-104-701

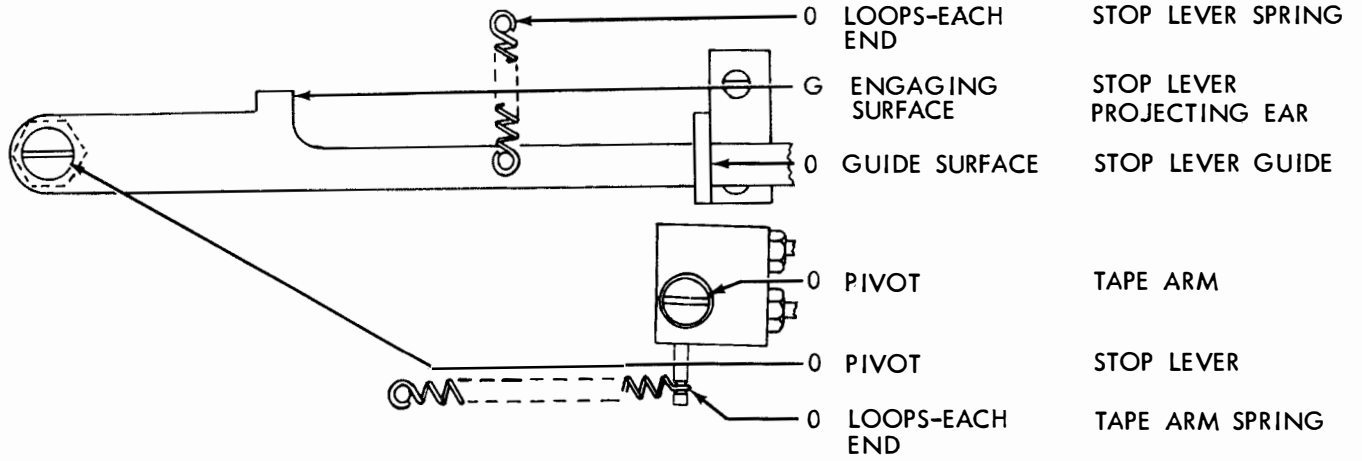
2.06 Drive shaft Assembly



2.07 Clutch-shaft and Intermediate-gear Assembly



2.08 Stop Lever and Tape Arm Mechanism



2.09 Tape Alarm Mechanism

