

PAPER WINDER (PW)

PARTS

FIGURE	CONTENTS	PAGE
1	Base Assembly	3
2	Motor Mounting Bracket Assembly	4
3	104851 Modification Kit to Provide 100 Ohm Resistance for 110 Volt, DC or 25 Cycle, AC Operated Paper Winder	5
4	129428 Modification Kit to Provide Reverse Rotation of Paper Winder	5
5	Modification Kit to Provide Paper Spindle Shaft Support Brackets and Bearings	6
	Numerical Index	7

PAINT FINISH COLOR CODE CHART		
COLOR	Finish Suffixes	
	Textured Vinyl	Smooth Vinyl
Gray, Green Gray, Light Gray, Olive	GA(45)	HB(68) HF(46)
The double asterisk(**) denotes a painted part. Suffix to be applied following the part number. Number in parentheses indicates Bell System Code.		

NOTE: When ordering parts from this section,
prefix each number with the letters TP.

The part identification information contained in the following change notice has been incorporated in this issue.	
TCN	#1038

TELETYPE TO BELL SYSTEM CODE CROSS REFERENCE CHART FOR UNITS COVERED IN THIS SECTION		
Teletype Code	Bell System Code	Maximum Paper Width
PW201**	15A** Paper Winder	8-1/2"
PW202**	15B** Paper Winder	5"
PW204**	15C** Paper Winder	8-1/2"
PW205**	15D** Paper Winder	5"
PW206**	15E** Paper Winder	8-1/2"
PW208**	15F** Paper Winder	5"

**Refer to page 1 for finish suffix

Description	Cylinder	Rod	Base Plate	Shaft
Paper Width Max.				
5"	93655	88886	110996**	93656
6"	93657			
6-1/2"	93646	89203	101023**	93644
8-1/2"	93705			

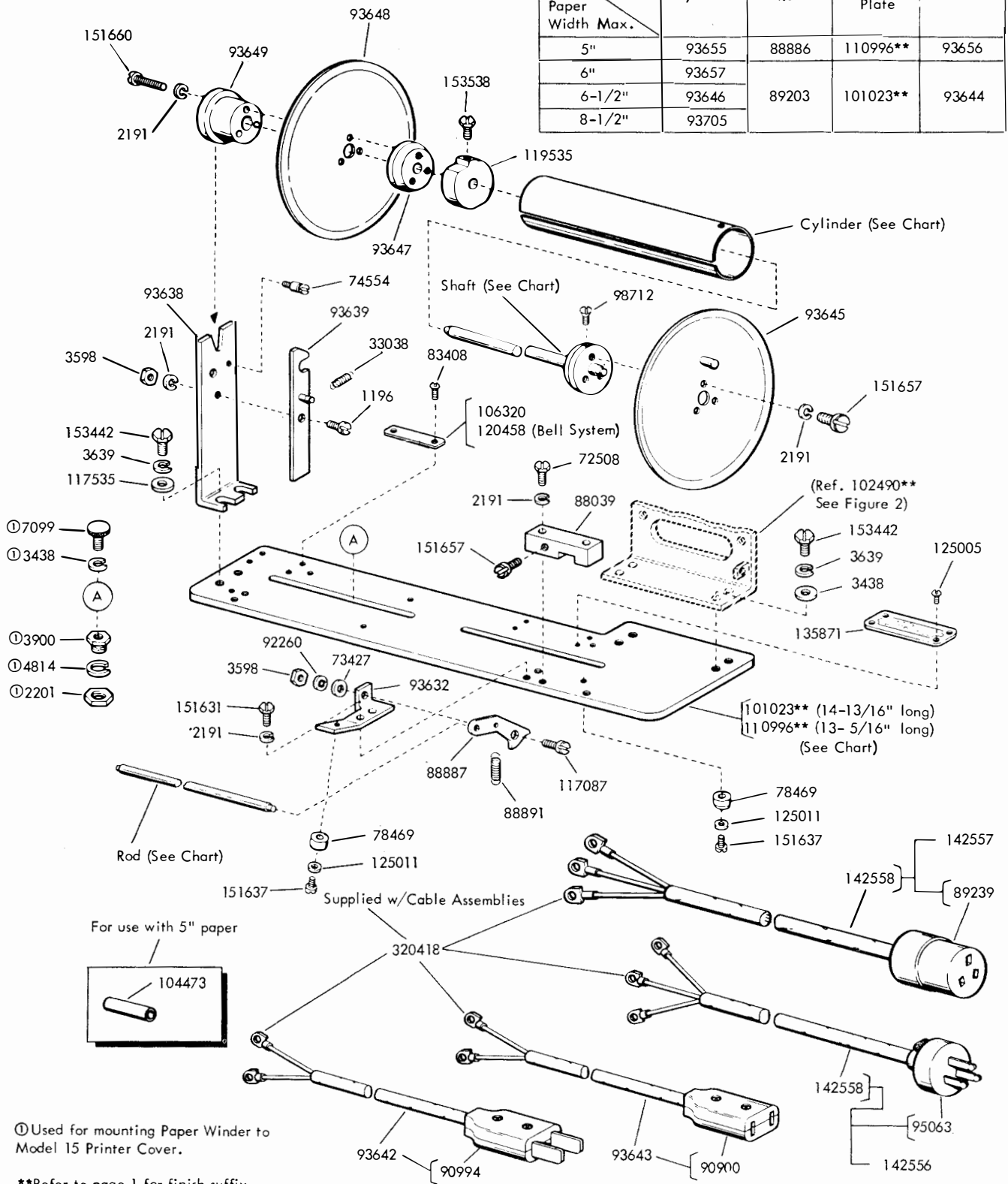
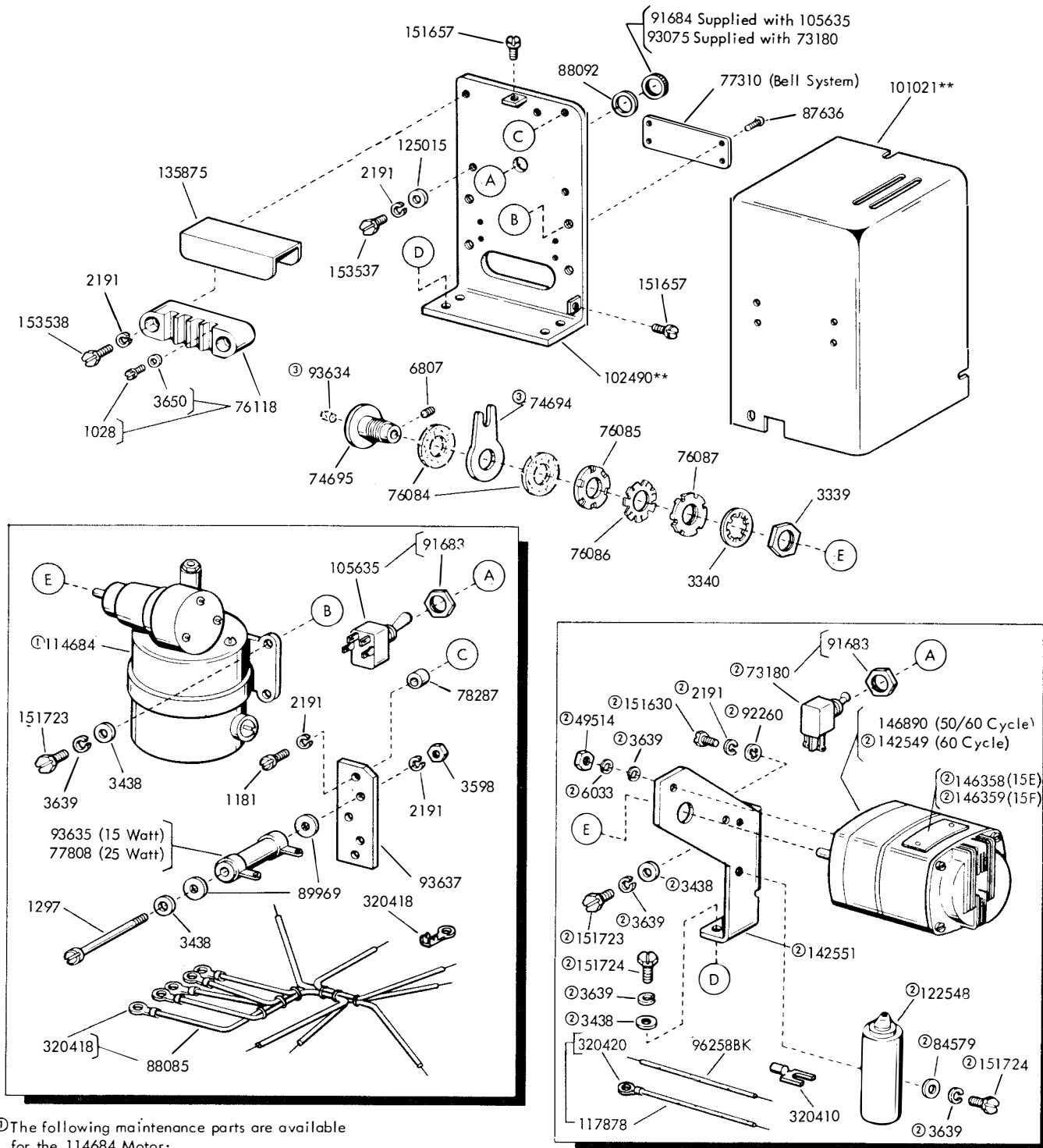


FIGURE 1. BASE ASSEMBLY



① The following maintenance parts are available for the 114684 Motor:

- 113911 Cap, Motor Brush
- 114685 Brush, Motor
- 119477 Gear (60T)
- 129689 Gear (1T)
- 92115 Setscrew
- 149793 Screw, Phillips Head
- 149794 Insert

② Part of 136146 Modification Kit To Convert Paper Winder Units From Universal Motor To Synchronous Motor, Includes 142556 and 142557 Cables Shown on Figure 1.

③ Early Design—see Figure 5 for new design
** Refer to page 1 for finish suffix

FIGURE 2. MOTOR MOUNTING BRACKET ASSEMBLY

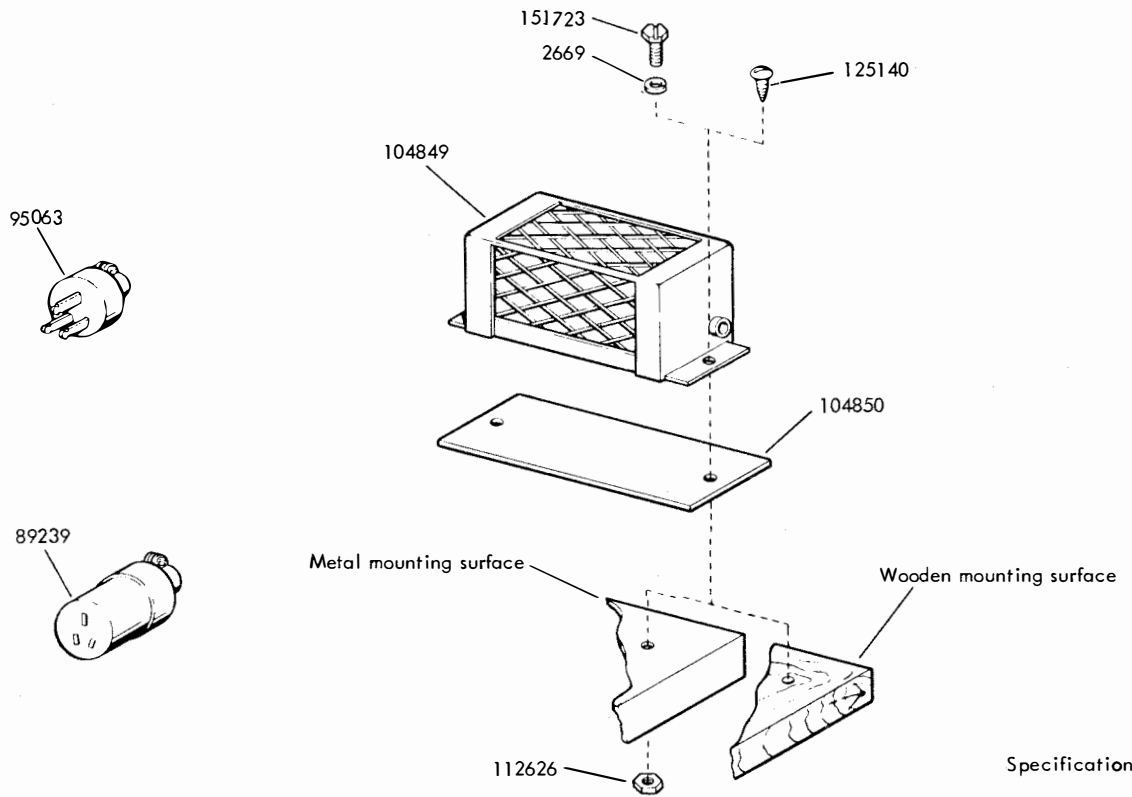
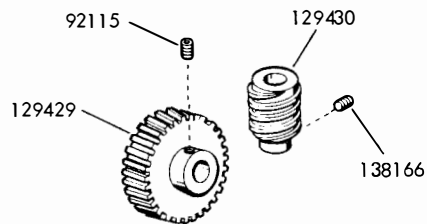


FIGURE 3. 104851 MODIFICATION KIT TO PROVIDE 100 OHM RESISTANCE FOR 110 VOLT, DC OR 25 CYCLE, AC OPERATED PAPER WINDER



Specification 51485

FIGURE 4. 129428 MODIFICATION KIT TO PROVIDE REVERSE ROTATION OF PAPER WINDER

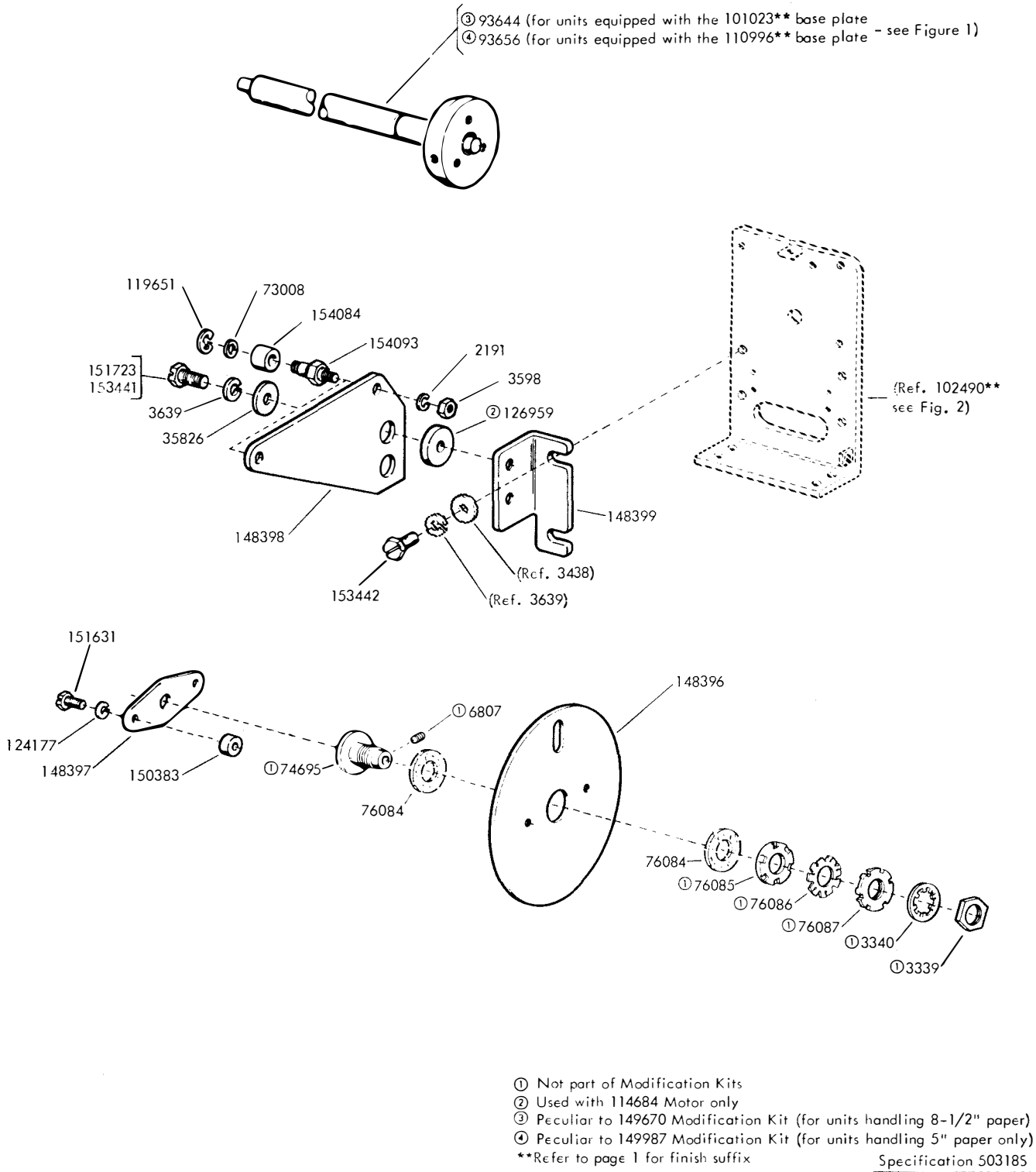


FIGURE 5. MODIFICATION KITS TO PROVIDE PAPER SPINDLE SHAFT SUPPORT BRACKETS AND BEARINGS

NUMERICAL INDEX

Part Number	Description and Page Number	Part Number	Description and Page Number	Part Number	Description and Page Number
1028	Screw, 4-40 x 1/4 Fil 4	89969	Washer, Insulating 4	119651	Ring, Retaining 6
1181	Screw, 6-40 x 11/16 Fil 4	90900	Connector, 2 PT Receptacle 3	120458	Plate, Identification 3
1196	Screw, 6-40 Shoulder 3	90994	Connector, 2 PT Plug 3	122548	Capacitor, 1.05 MFD 4
1297	Screw, 6-40 x 2-7/16 Fil 4	91683	Nut, 15/32-32 Hex 4	124177	Lockwasher 6
2191	Lockwasher 3,4,6	91684	Nut, 15/32-32 Ring 4	125005	Screw, 2-56 x 3/16 Rd 3
2201	Nut, 5/16-32 Hex 3	92115	Setscrew, 8-32 4,5	125011	Washer, Flat 3
2669	Lockwasher 5	92260	Lockwasher 3,4	125015	Washer, Flat 4
3339	Nut, 9/16-32 Hex 4,6	93075	Ring, Shoulder 4	125140	Screw, No. 8 Wood 5
3340	Lockwasher 4,6	93632	Bracket, Slack Rod 3	126959	Washer, Flat 6
3438	Washer, Flat 3,4,6	93634	Wick, Felt 4	129428	Modification Kit 1,5
3598	Nut, 6-40 Hex 3,4,6,	93635	Resistor, 250 Ohm 4	129429	Gear, 60T 5
3639	Lockwasher 3,4,6	93637	Plate 4	129430	Gear, 1T 5
3650	Washer, Flat 4	93638	Bracket, Bearing 3	129689	Gear, 1T 4
3900	Bushing 3	93639	Latch w/Post 3	135871	Plate, Instruction 3
4814	Lockwasher 3	93642	Cable Assembly 3	135875	Cover, Block 4
6033	Lockwasher 4	93643	Cable Assembly 3	136146	Modification Kit 4
6807	Setscrew, 6-40 4,6	93644	Shaft 3,6	138166	Setscrew, 8-32 5
7099	Screw, 10-32 Thumb 3	93645	Spindle, Left Paper 3	142549	Motor, 115V AC Synchronous 4
33038	Spring 3	93646	Cylinder, Paper Spindle 3	142551	Bracket 4
35826	Washer, Flat 6	93647	Hub, Right Paper Spindle 3	142556	Cable Assembly 3,4
49514	Nut, 8-32 Hex 4	93648	Spindle, Right Paper 3	142557	Cable Assembly 3,4
72508	Screw, 6-40 x 3/4 Hex 3	93649	Knob 3	142558	Cable w/Terminals 3
73008	Washer, Flat 6	93655	Cylinder, Paper Spindle 3	146358	Plate, Identification 4
73180	Switch, SP Toggle 4	93656	Shaft, Paper Spindle 3,6	146359	Plate, Identification 4
73427	Washer, Flat 3	93657	Cylinder, Paper Spindle 3	146890	Motor, 115V AC Synchronous 4
74554	Post, Spring 3	93705	Cylinder, Paper Spindle 3	148396	Disc 6
74694	Arm 4	95063	Connector, 3 PT Plug 3,5	148397	Bracket 6
74695	Sleeve, Clutch 4,6	96258BK	Jumper, 3" Black 4	148398	Bracket 6
76084	Washer, Felt 4,6	98712	Screw, 4-40 x 1/4 Flat 3	148399	Bracket 6
76085	Disc, Friction 4,6	101021**	Cover 4	149670	Modification Kit 6
76086	Washer, Spring 4,6	101023**	Plate 3,6	149793	Screw, 10-32 x 1/2 Flat 4
76087	Nut, 9/16-32 Friction 4,6	102490**	Bracket 3,4,6	149794	Insert, Self Locking 4
76118	Block, Terminal 4	104473	Bushing 3	149987	Modification Kit 6
77310	Nameplate 4	104849	Resistor, 100 Ohm 5	150383	Spacer, .149" Thk 6
77808	Resistor, 250 Ohm 4	104850	Insulator, .125" Thk 5	151630	Screw, 6-40 x 1/4 Hex 4
78287	Collar 4	104851	Modification Kit 1,5	151631	Screw, 6-40 x 5/16 Hex 3,6
78469	Foot, Rubber 3	105635	Switch, DP-ST Toggle 4	151637	Screw, 4-40 x 1/4 Fil 3
83408	Screw, 4-40 x 3/16 Rd 3	106320	Nameplate 3	151657	Screw, 6-40 x 1/4 Fil 3,4
84579	Washer, Flat 4	110996**	Plate 3,6	151660	Screw, 6-40 x 7/8 Fil 3
87636	Screw, 2-56 x 3/16 Rd 4	112626	Nut, 10-32 Hex 5	151660	Screw, 6-40 x 7/8 Fil 3
88039	Clamp, Cable 3	113911	Cap, Motor Brush 4	151723	Screw, 10-32 x 3/8 Hex 4,5,6
88085	Cable 4	114684	Motor, 115V AC Series 4,6	151724	Screw, 10-32 x 5/8 Hex 4
88092	Washer, Flat 4	114685	Brush, Motor 4	153441	Screw, 10-32 x 7/16 Hex 6
88886	Rod, Paper Slack 3	117087	Screw, 6-40 Shoulder 3	153442	Screw, 10-32 x 1/2 Hex 3,6
88887	Lever, Slack Rod 3	117535	Washer, Flat 3	153537	Screw, 6-40 x 9/32 Hex 4
88891	Spring 3	117878	Jumper, 3" Black 4	153538	Screw, 6-40 x 7/16 Hex 3,4
89203	Rod, Paper Slack 3	119477	Gear, 60T 4		
89239	Connector, 3PT Receptacle 3,5	119535	Bushing 3		

**Refer to page 1 for finish suffix

SECTION 570-301-803

NUMERICAL INDEX (Continued)

Part Number	Description and Page Number	Part Number	Description and Page Number	Part Number	Description and Page Number
154084	Bearing, Needle 6	320410	Terminal, Spade Type 4	320420	Terminal, Ring Type 4
154093	Stud 6	320418	Terminal, Ring Type 3,4		