



BULLETIN 1171B

PARTS
MODEL 28
TRANSMITTER DISTRIBUTOR
(LCXD - Pivoted and Fixed Heads)

TELETYPE®
CORPORATION
SUBSIDIARY OF *Western Electric Company* INC.
CHICAGO, ILLINOIS, U. S. A.

Copyright 1958 by Teletype Corporation in the United States.
Copyright in all countries participating in International Con-
vention and Pan American Conventions. All rights reserved
including rights of translations into all languages.

Printed in U.S.A.



LIST OF EFFECTIVE PAGES

MAY, 1958

Page Numbers	Change In Effect
A to C	Original
1 to 44	Original

The above list indicates the effective pages as of the date of issue. Upon receipt of Change Pages, insert them numerically and discard any superseded pages.

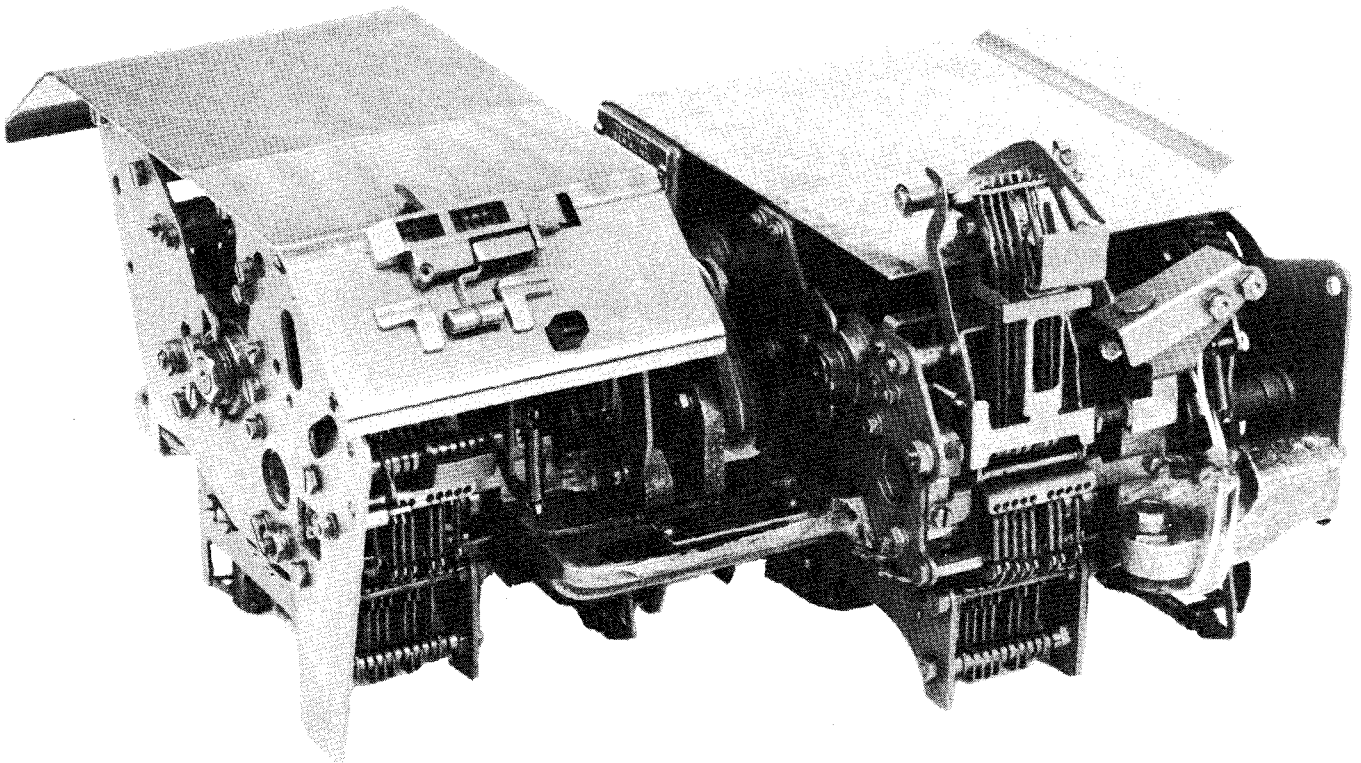
LIST OF ILLUSTRATIONS

Figure	Title	Page
1	Cover and Main Casting	1
2	Yoke Mechanism and Last Character Contact Pile-Up (Pivoted Head Transmitter) . .	3
3	Rear Plate and Reservoir Mounting Bar (Pivoted Head Transmitter)	5
4	Bails (Pivoted Head Transmitter)	7
5	Sensing Mechanism (Pivoted Head Transmitter)	9
6	Front Plate (Pivoted Head Transmitter)	11
7	Top Plate and Cover Plate (Fixed Head Transmitter)	13
8	Tape Guide Plate (Fixed Head Transmitter)	15
9	Center Plate (Fixed Head Transmitter)	17
10	Switch Plate (Fixed Head Transmitter)	19
11	Rear Plate and Oil Reservoir (Fixed Head Transmitter)	21
12	Front Plate (Fixed Head Transmitter)	23
13	Bails (Fixed Head Transmitter)	25
14	Sensing Mechanism (Fixed Head Transmitter)	27
15	Sensing Shaft (Pivoted Head Transmitter)	29
16	Sensing and Distributor Shaft - Sensing Cam Sleeve	31
17	Sensing and Distributor Shaft - Distributor Cam Sleeve	33
18	Sensing and Distributor Clutch Trip Mechanism	35
19	Distributor Contact Block	37
20	Storing Contact Switch	39

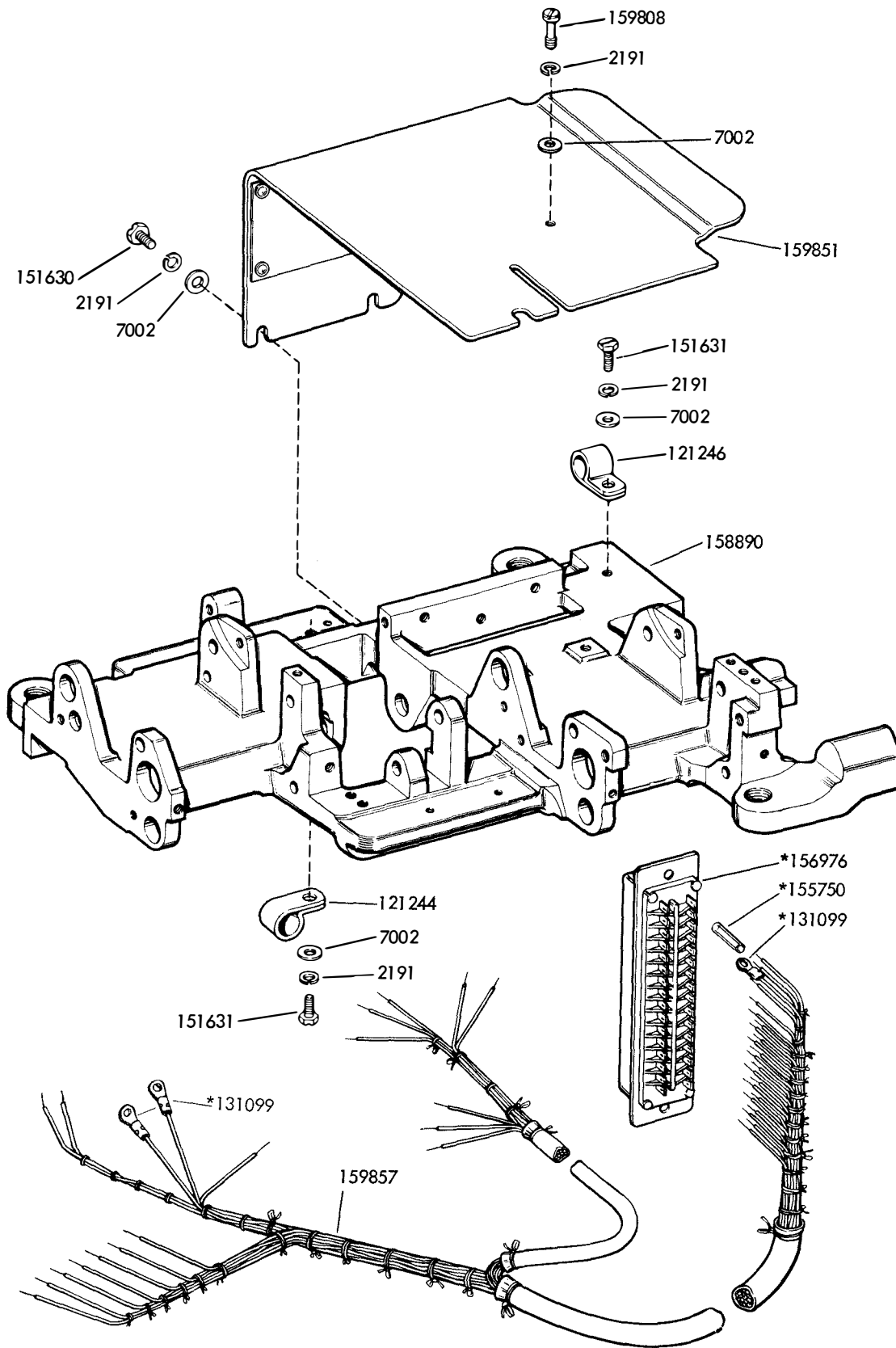
TRANSMITTER DISTRIBUTORS COVERED HEREIN:
 LCXD1 (Bell System 28B)
 LCXD3

BELL SYSTEM ONLY

When ordering parts from this bulletin, prefix each number with the letters TP.



MODEL 28 TRANSMITTER - DISTRIBUTOR (LCXD)
(Pivoted and Fixed Heads, Multi-contact)



* PART OF 159857 CABLE ASSEMBLY (FIXED HEAD TRANSMITTER)

FIGURE 1. COVER AND MAIN CASTING

NUMERICAL INDEX - FIGURE 1

Part Number	Description
2191	Washer, Lock
7002	Washer, Flat
121 244	Clamp, Cable
121 246	Clamp, Cable
131099	Terminal
151630	Screw (6-40 x 1/4 Hex)
151631	Screw (6-40 x 5/16 Hex)
155750	Tubing, Insulation
156976	Connector, Plug (32 pt)
158890	Casting, Transmitter Distributor Main
159808	Screw, Captive
159851	Cover, Pivoted Head Transmitter
159857	Cable Assembly

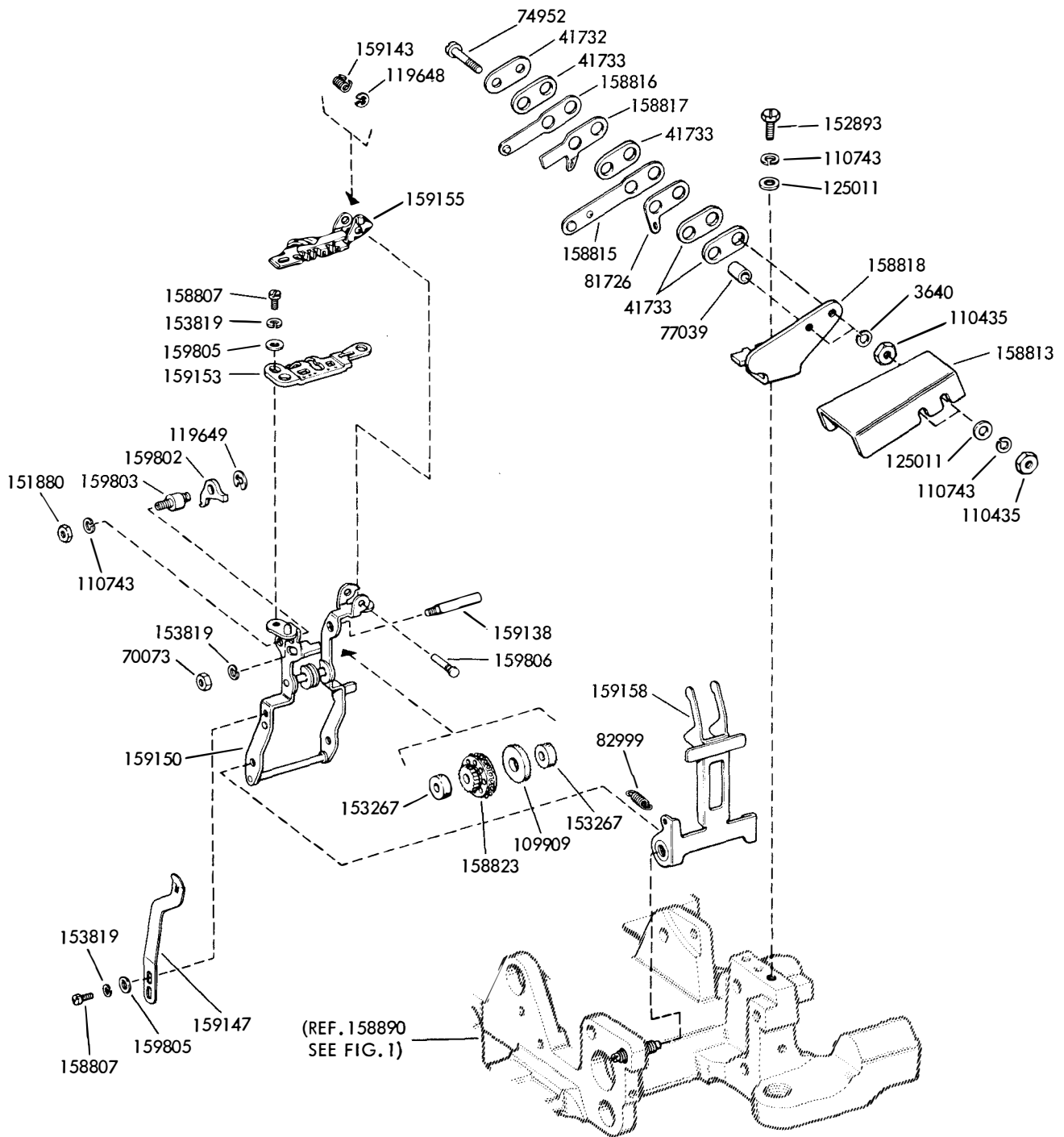


FIGURE 2. YOKE MECHANISM AND LAST CHARACTER CONACT PILE-UP
(Pivoted Head Transmitter)

NUMERICAL INDEX - FIGURE 2

Part Number	Description
2034	Washer, Flat
3640	Washer, Lock
41732	Plate
41733	Washer, Insulating
70073	Nut (3-48 Hex)
74952	Screw (4-40 x 5/8 Fil)
77039	Bushing, Contact Insulating
81726	Terminal, Contact
82999	Spring, Tape Deflector
109909	Washer, Felt
110435	Nut (4-40 Hex)
110743	Washer, Lock
119648	Ring, Retaining
119649	Ring, Retaining
125011	Washer, Flat
151880	Nut (4-40 Hex)
152893	Screw (4-40 x 1/4 Hex)
153267	Washer, Felt
153799	Screw (4-40 x 21/64 Hex)
153819	Washer, Lock
158807	Screw (3-48 x 11/64 Fil)
158813	Cover, Contact
158815	Spring, Contact (Swinger)
158816	Spring, Contact
158817	Stiffener, Contact
158818	Bracket, Last Character Contact
158823	Wheel, Feed
159138	Stud
159143	Spring, Lid
159147	Latch
159150	Yoke
159153	Plate, Top
159155	Lid, Tape
159158	Deflector, Tape
159802	Pawl, Detent
159803	Stud, Eccentric
159805	Washer, Flat
159806	Shaft

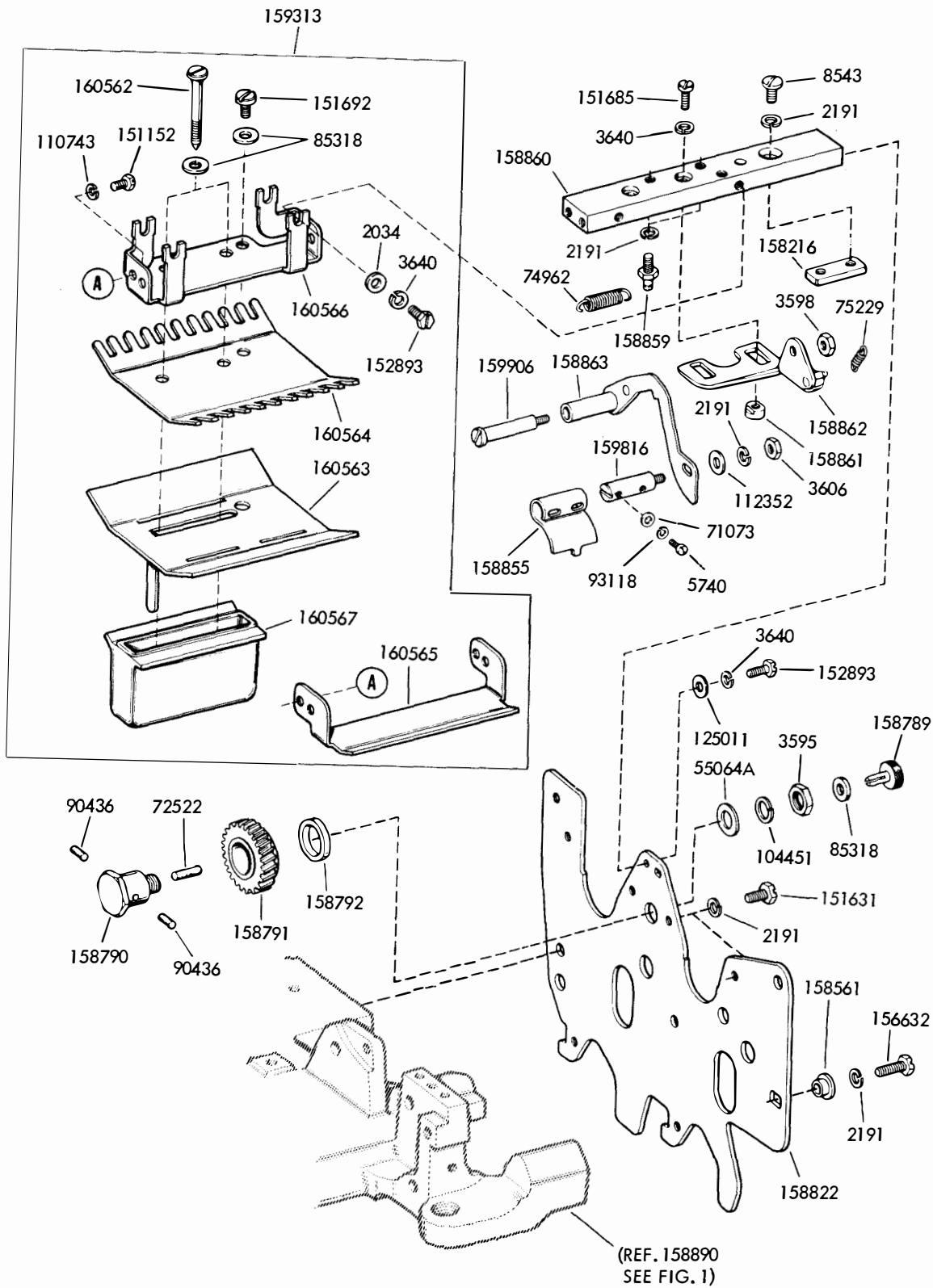


FIGURE 3. REAR PLATE AND RESERVOIR MOUNTING BAR
(Pivoted Head Transmitter)

NUMERICAL INDEX - FIGURE 3

Part Number	Description
2034	Washer, Flat
2191	Washer, Lock
3595	Nut (1/4-32)
3598	Nut (6-40 Hex)
3606	Nut (6-40 Hex)
3640	Washer, Lock
5740	Screw (2-56 x 1/4 Fil)
8543	Screw (6-40 x 1/4 Fil)
56064A	Washer, Flat
71073	Washer, Flat
72522	Wick, Felt
74962	Spring
75229	Spring, Tape Depressor
85318	Washer, Leather
90436	Wick, Felt (Cross)
93118	Washer, Lock
104451	Washer, Lock
110743	Washer, Lock
112352	Washer, Flat
125011	Washer, Flat
151152	Screw (4-40 x 3/16 Hex)
151631	Screw (6-40 x 5/16 Hex)
151685	Screw (4-40 x 5/16 Fil)
151692	Screw (6-40 x 3/16 Fil)
152893	Screw (4-40 x 1/4 Hex)
158216	Plate, Nut
158561	Bushing
156632	Screw (6-40 x 11/32 Hex)
158789	Plug, Oil Retainer (Idler Stud)
158790	Stud, Idler Gear Bearing
158791	Gear, Idler (23T)
158792	Spacer, Idler Gear
158822	Plate, Pivoted Head Transmitter Rear
158855	Extension, Tape Depressor
158859	Post, Feed Lever Spring
158860	Bar, Reservoir Mounting
158861	Nut, Special
158862	Bracket, Tape Depressor
158863	Depressor, Tape W/Bushing-Stud
158866	Wick
158867	Retainer, Wick
159313	Reservoir Assembly
159314	Reservoir
159316	Wick
159317	Retainer, Wick
159816	Stud, Extension Mounting
159906	Stud, Shoulder
160562	Screw, Special
160563	Wick, Leather
160564	Stiffener
160565	Bail
160566	Bracket
160567	Reservoir

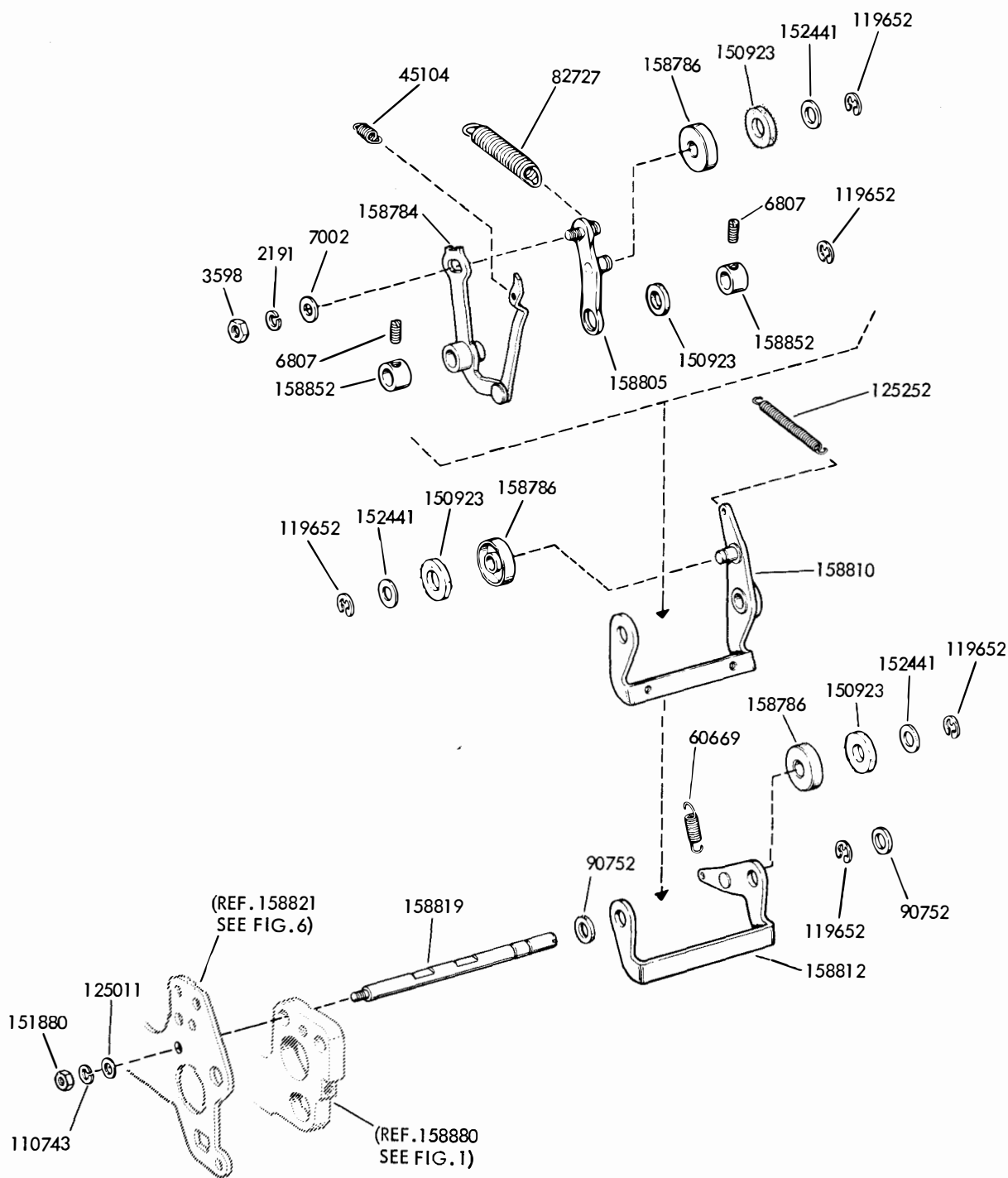


FIGURE 4. BAILS
(Pivoted Head Transmitter)

NUMERICAL INDEX - FIGURE 4

Part Number	Description
2191	Washer, Lock
3598	Nut (6-40 Hex)
6807	Screw, Set (6-40 x 3/16)
7002	Washer, Flat
45104	Spring, Check Pawl
60669	Spring, Pusher Bail
82727	Spring, Feed Lever (Pivoted Head Transmitter)
90752	Washer, Felt
110743	Washer, Lock
119652	Ring, Retaining
125011	Washer, Flat
125252	Spring, Latch Stripper Bail
150923	Washer, Felt
151880	Nut (4-40 Hex)
152441	Washer, Flat
158784	Lever Assembly, Feed
158786	Roller
158805	Lever, Cam Follower (Feed)
158810	Bail, Latch Stripper
158812	Bail, Pusher Stripper
158819	Shaft, Stripper Bail Pivot
158852	Collar, Feed Lever Set

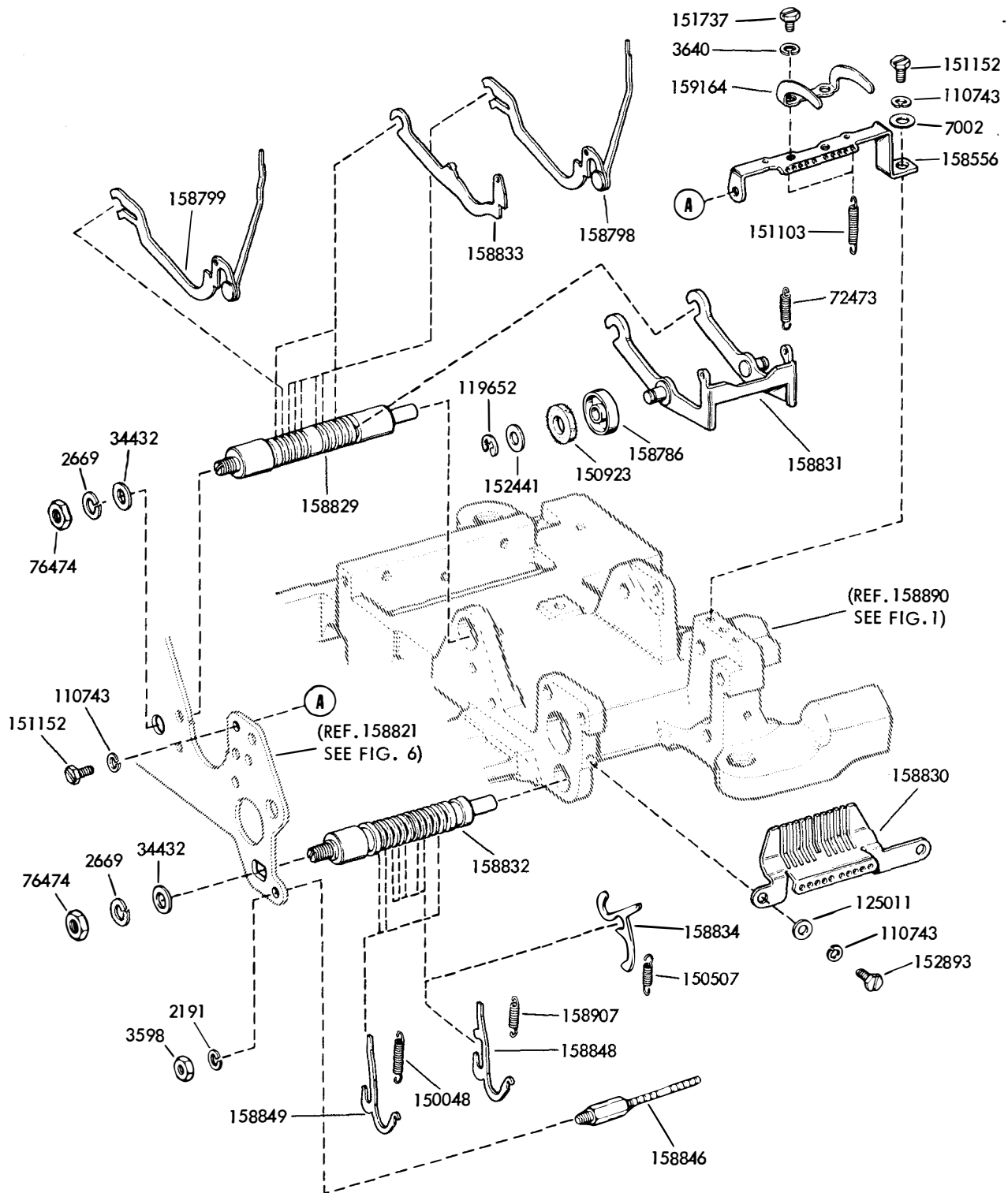


FIGURE 5. SENSING MECHANISM
(Pivoted Head Transmitter)

NUMERICAL INDEX - FIGURE 5

Part Number	Description
2191	Washer, Lock
2669	Washer, Lock
3598	Nut (6-40 Hex)
3640	Washer, Lock
7002	Washer, Flat
34432	Washer, Flat
72473	Spring, Sensing Bail
76474	Nut (10-32 Hex)
110743	Washer, Lock
119652	Ring, Retaining
125011	Washer, Flat
150048	Spring, Pusher (Auxiliary 6th Pin)
150507	Spring, Latch Lever
150923	Washer, Felt
151103	Spring, Sensing & Auxiliary Lever
151152	Screw (4-40 x 3/16 Hex)
151737	Screw (4-40 x 11/64 Hex)
152441	Washer, Flat
152893	Screw (4-40 x 1/4 Hex)
158556	Bracket, Sensing Lever Spring
158786	Roller, Sensing Bail
158798	Pin, Sensing
158799	Pin, Tape Out
158829	Shaft, Sensing Bail Eccentric
158830	Guide, Sensing Lever
158831	Bail, Sensing
158832	Shaft, Pusher Lever Eccentric
158833	Lever, Auxiliary
158834	Lever, Slide Latch
158846	Post, Latch Lever Spring
158848	Lever, Pusher
158849	Lever, Pusher
158907	Spring, Pusher
151964	Bracket, Deflector Stop

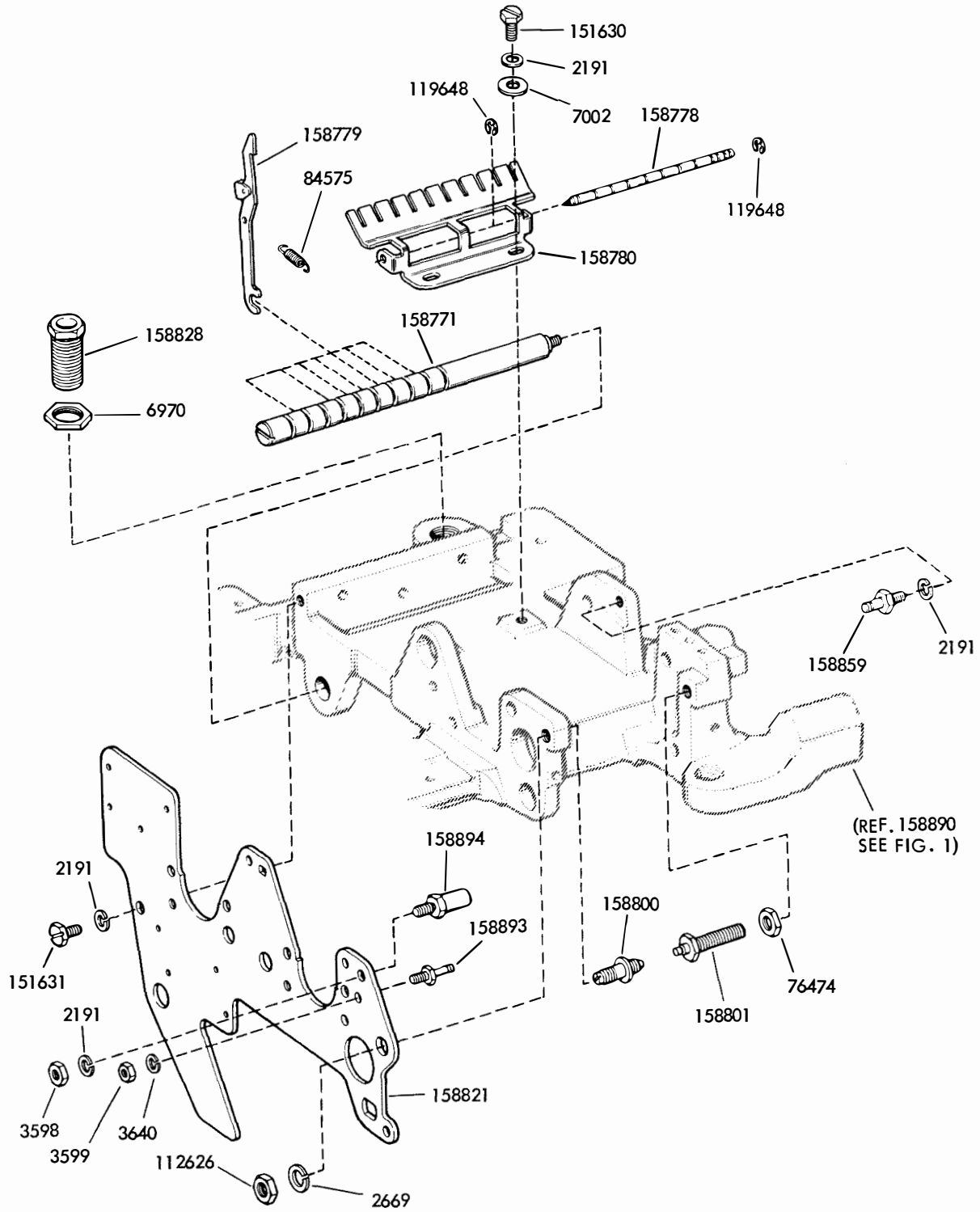
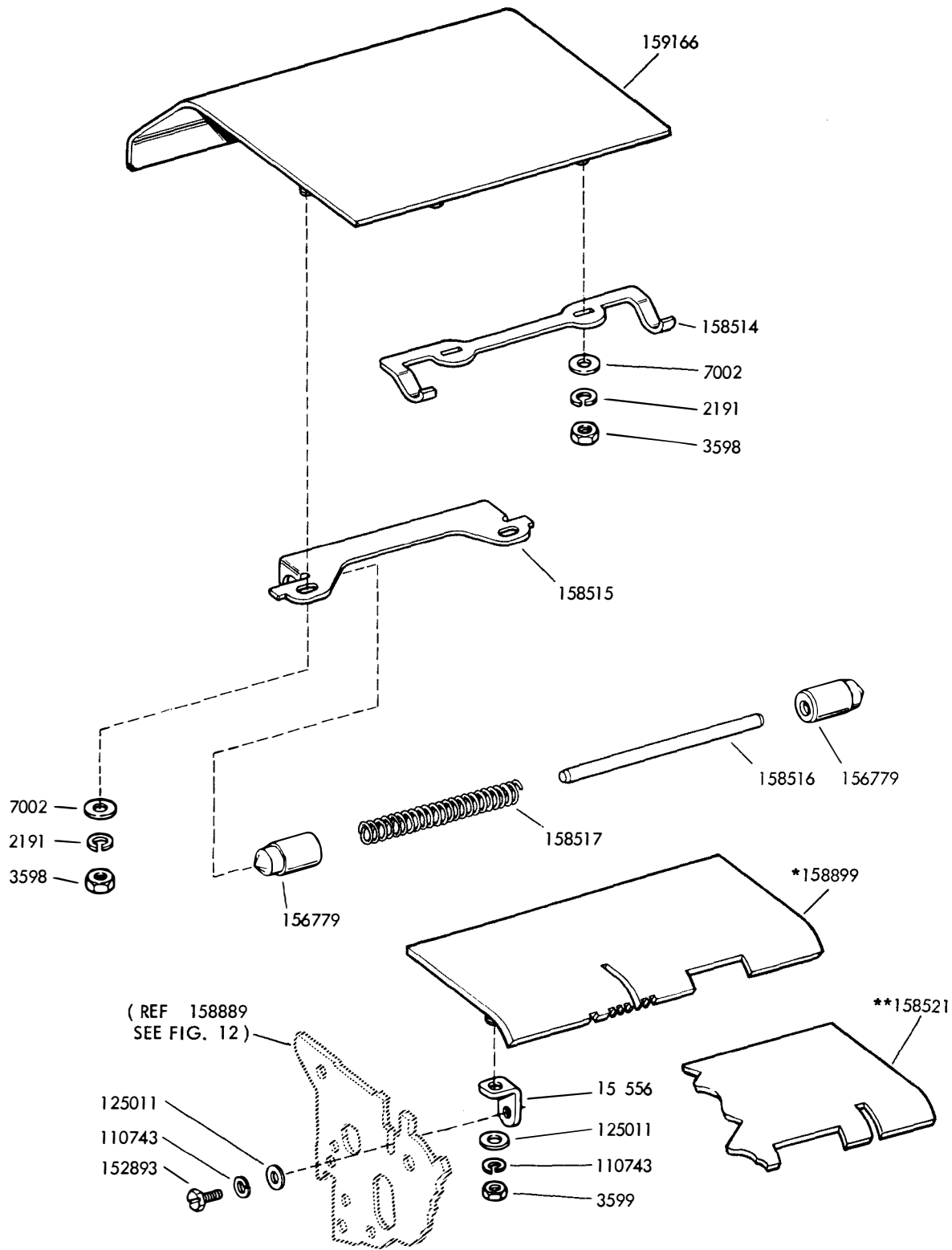


FIGURE 6. FRONT PLATE
(Pivoted Head Transmitter)

NUMERICAL INDEX - FIGURE 6

Part Number	Description
2191	Washer, Lock
2669	Washer, Lock
3598	Nut (6-40 Hex)
3599	Nut (4-40 Hex)
3640	Washer, Lock
6970	Nut (3/8-32 Hex)
7002	Washer, Flat
76474	Nut (10-32 Hex)
84575	Spring, Cam Follower Lever
112626	Nut (10-32 Hex)
119648	Ring, Retaining
151630	Screw (6-40 x 1/4 Hex)
151631	Screw (6-40 x 5/16 Hex)
158771	Shaft, Distributor Cam Follower
158778	Post, Cam Follower Lever Spring
158779	Lever, Distributor Cam Follower
158780	Guide, Distributor Cam Follower Lever
158800	Pivot
158801	Screw, Sensing Head Rear Pivot
158821	Plate, Pivoted Head Transmitter Front
158828	Bushing, Mounting
158859	Post, Spring
158893	Post, Spring
158894	Post, Stop

1171B



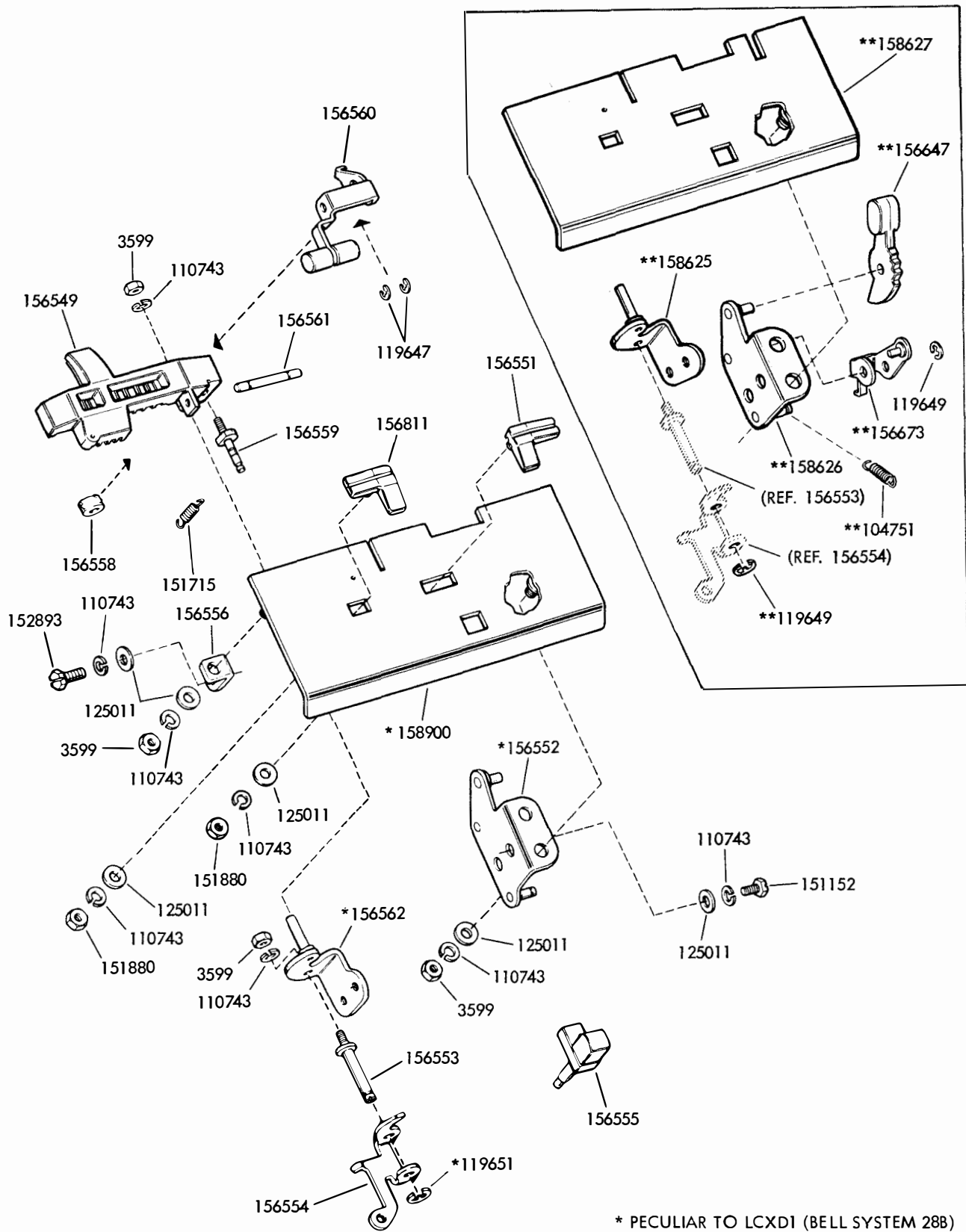
* PECULIAR TO LCXD1 (BELL SYSTEM 28B)

** PECULIAR TO LCXD3

FIGURE 7. TOP PLATE AND COVER PLATE
(Fixed Head Transmitter)

NUMERICAL INDEX - FIGURE 7

Part Number	Description
2191	Washer, Lock
3598	Nut (6-40 Hex)
3599	Nut (4-40 Hex)
7002	Washer, Flat
110743	Washer, Lock
125011	Washer, Flat
152893	Screw (4-40 x 1/4 Hex)
156556	Bracket, Top Plate Mounting
156779	Plunger, Cover Detenting
158514	Plate, Cover Spring
158515	Bracket, Cover Detent
158516	Rod, Spring Guide
158517	Spring, Plunger Compression
158521	Plate, Fixed Head Transmitter Top
158899	Plate, Fixed Head Transmitter Top
159166	Plate, Fixed Head Tape Reader Cover



* PECULIAR TO LCXD1 (BELL SYSTEM 28B)

** PECULIAR TO LCXD3

FIGURE 8. TAPE GUIDE PLATE
(Fixed Head Transmitter)

NUMERICAL INDEX - FIGURE 8

Part Number	Description
3599	Nut (4-40 Hex)
104751	Spring
110743	Washer, Lock
119647	Ring, Retaining
119649	Ring, Retaining
119651	Ring, Retaining
125011	Washer, Flat
151152	Screw (4-40 x 3/16 Hex)
151715	Spring
151880	Nut (4-40 Hex)
152893	Screw (4-40 x 1/4 Hex)
156549	Lid, Tape
156551	Guide, Right Tape
156552	Bracket W/Studs
156553	Post, Release Bail Eccentric
156554	Bail, Tape Lid Release
156555	Plunger, Tape Lid Release
156556	Bracket, Plate Mounting
156558	Washer, Felt
156559	Post, Tape Lid Latch
156560	Bail, Tight Tape Sensing
156561	Shaft, Bail Pivot
156562	Bracket, Tape Lid
156647	Lever, Start-Stop
156673	Bail W/Stud
156811	Guide, Left Tape
158625	Bracket W/Studs
158626	Bracket W/Studs
158627	Plate, Tape Guide
158900	Plate, Tape Guide

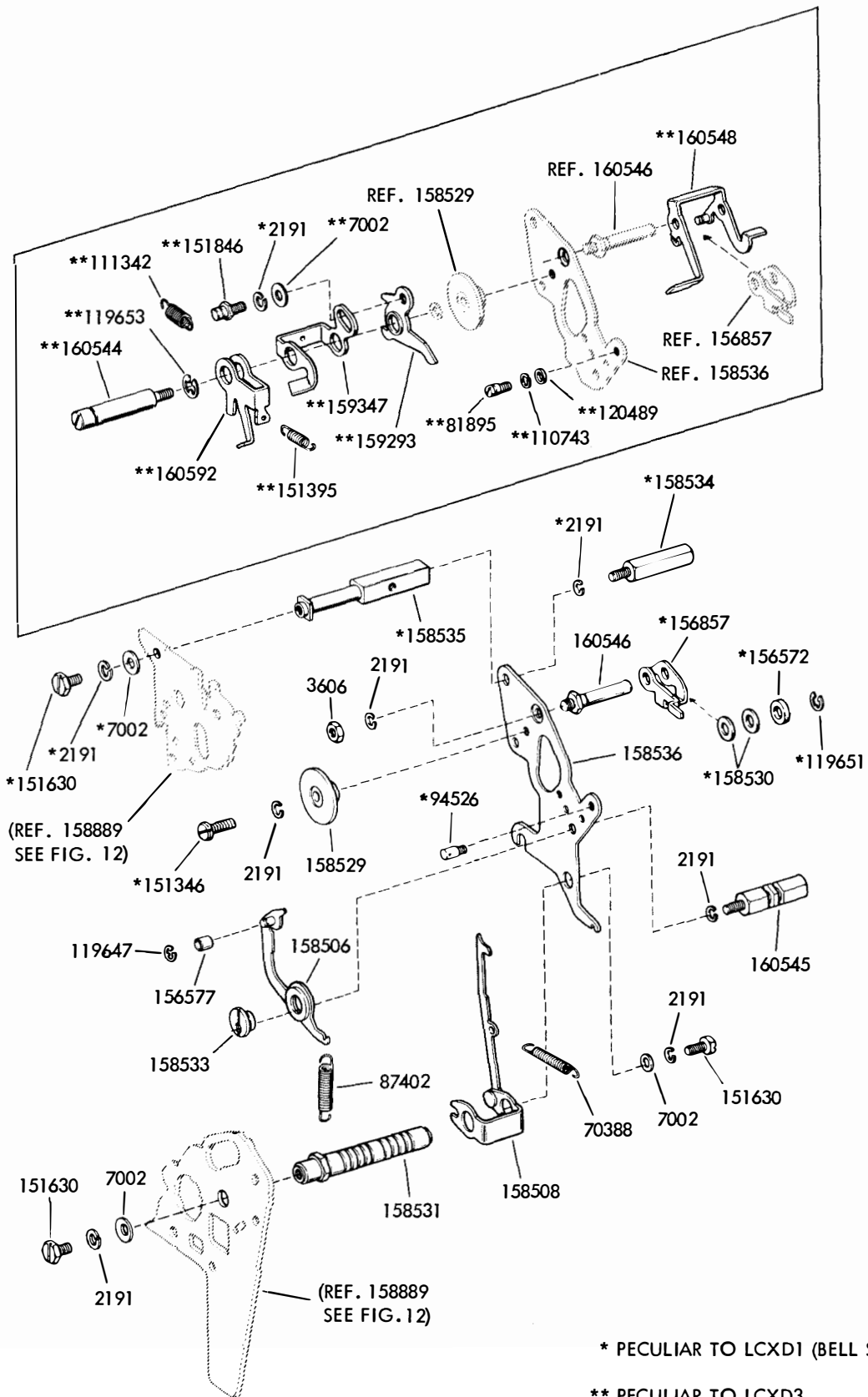


FIGURE 9. CENTER PLATE
(Fixed Head Transmitter)

NUMERICAL INDEX - FIGURE 9

Part Number	Description
2191	Washer, Lock
3606	Nut (6-40 Hex)
7002	Washer, Flat
70388	Spring, Feed Pawl
81895	Post, Spring
87402	Spring, Feed Wheel Detent
94526	Post, Spring
110743	Washer, Lock
111342	Spring
119651	Ring, Retaining
119653	Ring, Retaining
120489	Washer, Flat
151346	Screw (6-40 x 3/8 Fil)
151395	Spring
151630	Screw (6-40 x 1/4 Hex)
151846	Post, Spring
156572	Washer, Felt
156577	Roller, Detent Lever
156857	Bail, Intermediate
158506	Lever, Feed Wheel Detent
158508	Pawl Assembly, Feed
158529	Guide
158530	Spacer
158531	Shaft
158533	Bushing, Detent Lever Eccentric
158534	Post, Detent Eccentric
158535	Post
158536	Plate, Center
159293	Arm, Extension
159347	Bail
160544	Shaft
160545	Post, Guide
160546	Post
160548	Bail W/Post
160592	Bail, Switch

1171B

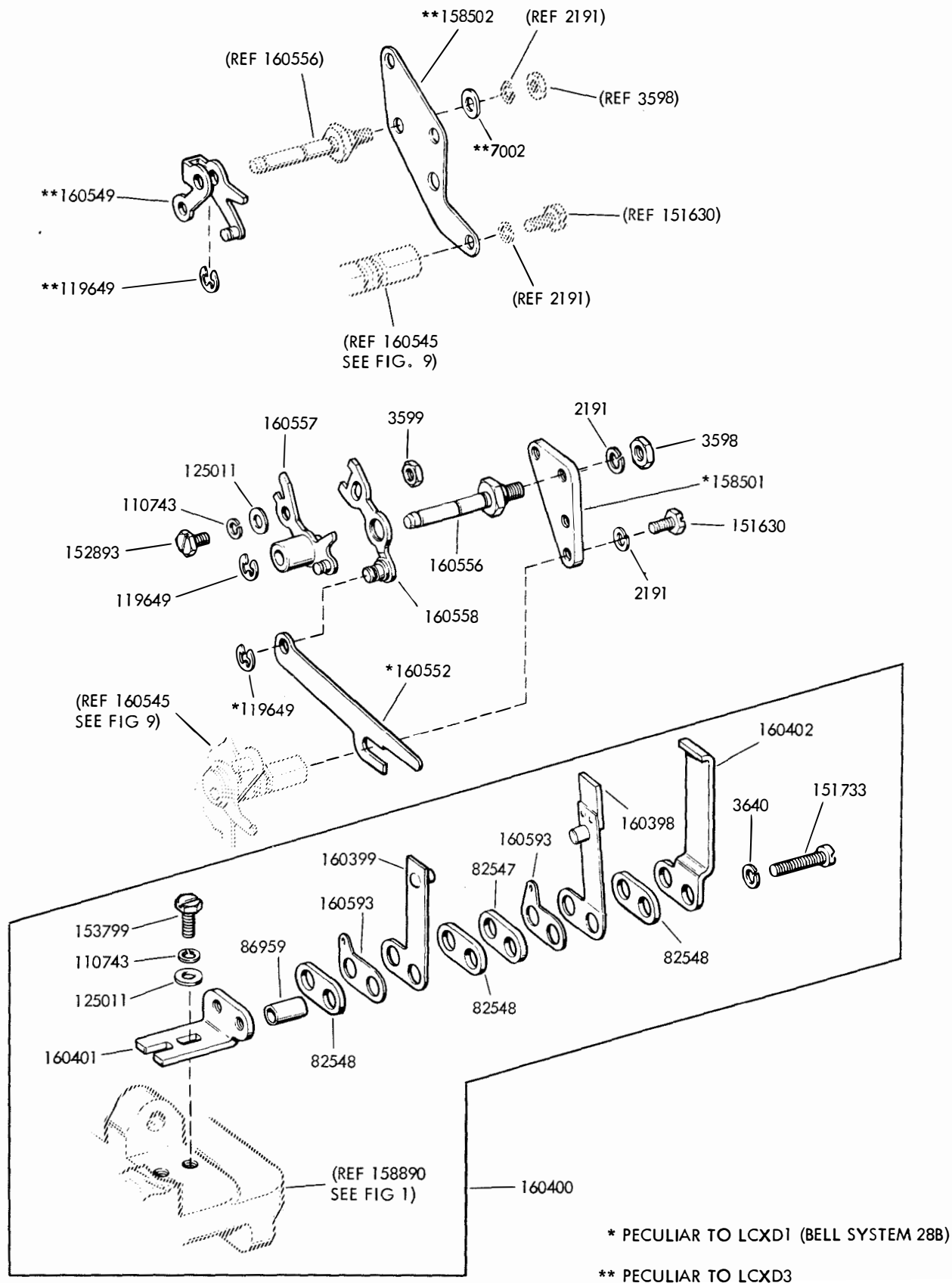


FIGURE 10. SWITCH PLATE
(Fixed Head Transmitter)

NUMERICAL INDEX - FIGURE 10

Part Number	Description
2191	Washer, Lock
3598	Nut (6-40 Hex)
3599	Nut (4-40 Hex)
3640	Washer, Lock
7002	Washer, Flat
82547	Insulator
82548	Insulator
86959	Bushing, Insulating
110743	Washer, Lock
119649	Ring, Retaining
125011	Washer, Flat
151630	Screw (6-40 x 1/4 Hex)
151733	Screw (4-40 x 9/16 Fil)
152893	Screw (4-40 x 1/4 Hex)
153799	Screw (4-40 x 21/64 Hex)
158501	Plate, Mounting
158502	Plate, Mounting
160398	Spring, Contact
160399	Spring, Contact
160400	Contact Assembly
160401	Bracket, Switch Mounting
160402	Bracket, Stop
160552	Arm, Slide
160556	Stud
160557	Arm W/Hub & Post
160558	Arm W/Stud
160593	Terminal

1171B

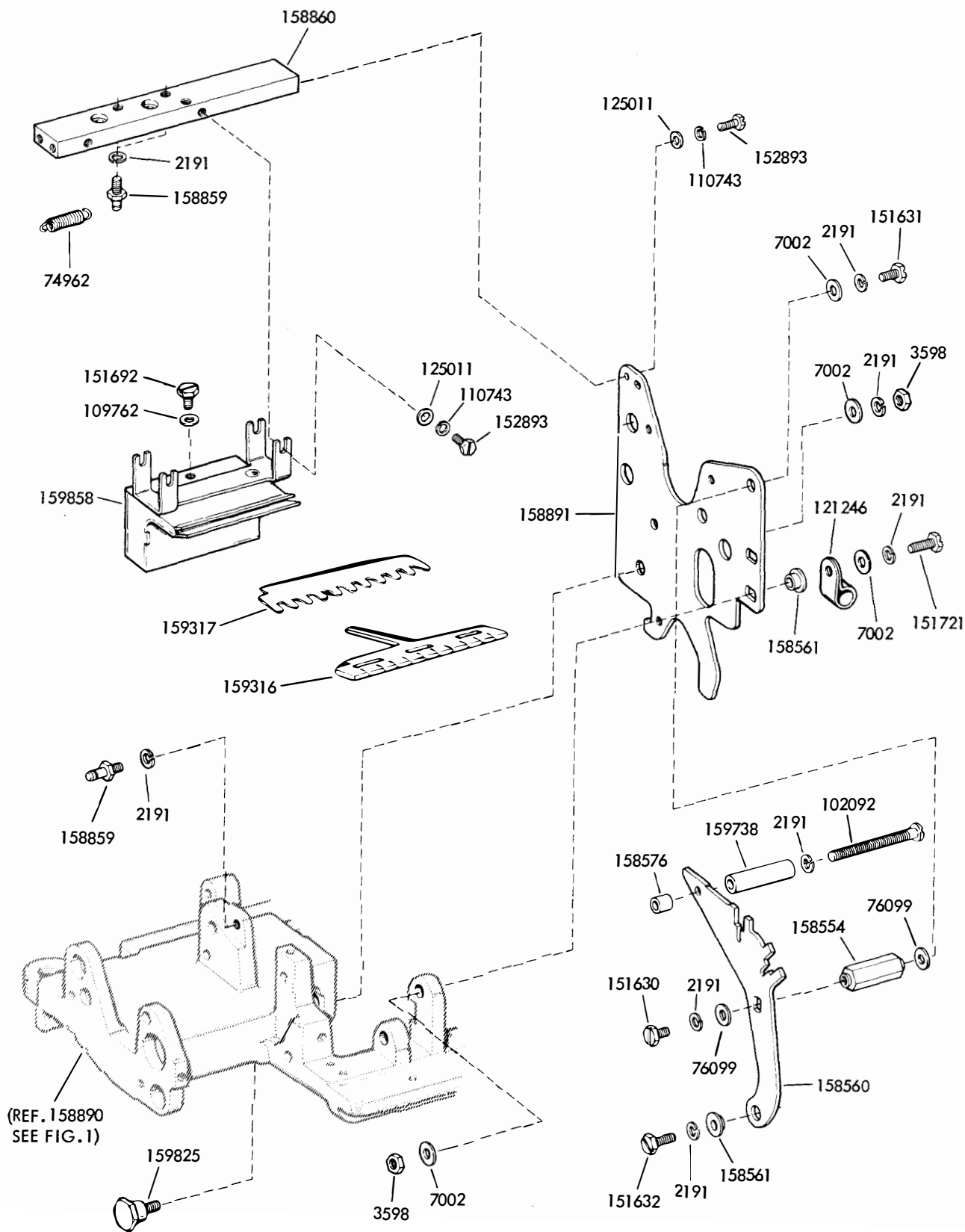


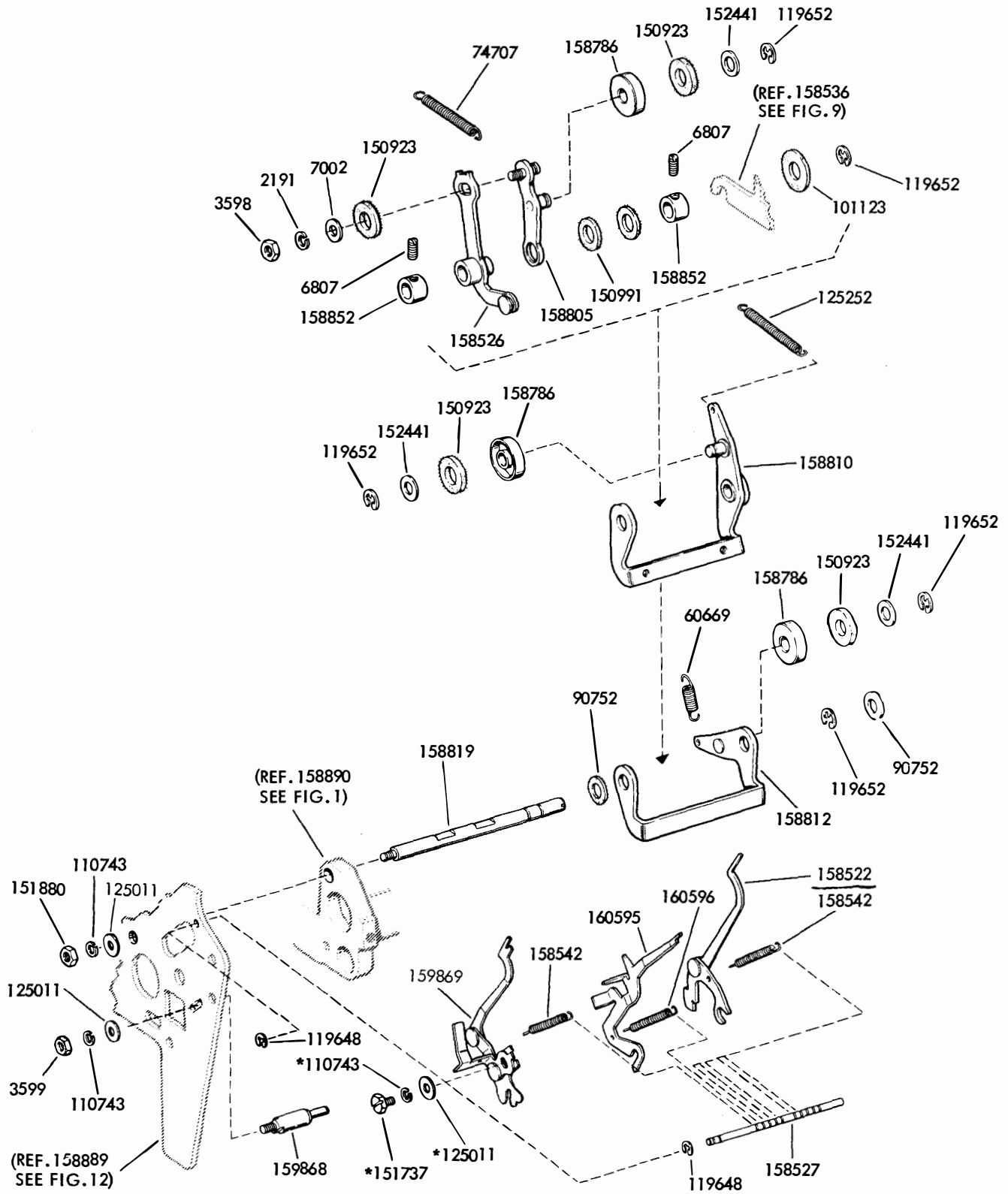
FIGURE 11. REAR PLATE AND OIL RESERVOIR
(Fixed Head Transmitter)

NUMERICAL INDEX - FIGURE 11

Part Number	Description
2191	Washer, Lock
3598	Nut (6-40 Hex)
7002	Washer, Flat
74962	Spring
76099	Washer, Flat
102092	Screw (6-40 x 1-9/16 Rd)
109762	Washer, Fiber
110743	Washer, Lock
121246	Clamp, Cable
125011	Washer, Flat
151630	Screw (6-40 x 1/4 Hex)
151631	Screw (6-40 x 5/16 Hex)
151632	Screw (6-40 x 3/8 Hex)
151692	Screw (6-40 x 3/16 Fil)
151721	Screw (6-40 x 3/4 Hex)
152893	Screw (4-40 x 1/4 Hex)
158554	Post, Pilot
158560	Plate, Right Intermediate (Fixed Head Transmitter)
158561	Bushing, Locating
158576	Spacer, Switch Plate
158859	Post, Spring
158860	Bar, Oil Reservoir Mounting
158891	Plate, Fixed Head Transmitter Rear
159316	Wick, Leather
159317	Retainer, Wick
159738	Spacer
159825	Stud, Mounting
159858	Reservoir, Oil

NUMERICAL INDEX - FIGURE 12

Part Number	Description
2034	Washer, Flat
2191	Washer, Lock
3598	Nut (6-40 Hex)
7002	Washer, Flat
41732	Plate, Clamp
74728	Terminal
76333	Bushing, Insulating
82547	Insulation
82548	Insulator
86959	Bushing, Insulating
93587	Washer, Flat
110743	Washer, Lock
125011	Washer, Flat
115221	Washer, Felt
151152	Screw (4-40 x 3/16 Hex)
151630	Screw (6-40 x 1/4 Hex)
151631	Screw (6-40 x 5/16 Hex)
151632	Screw (6-40 x 3/8 Hex)
151731	Screw (4-40 x 7/8 Fil)
151733	Screw (4-40 x 9/16 Fil)
151880	Nut (4-40 Hex)
152893	Screw (4-40 x 1/4 Hex)
156636	Wheel, Feed
156782	Nut
158539	Post, Feed Wheel
158540	Post, Plate Tie
158561	Bushing, Locating
158846	Post, Latch Lever Spring
158889	Plate, Fixed Head Transmitter Front
159165	Plate, Left Intermediate (Fixed Head Transmitter)
160403	Contact Assembly
160404	Spring, Contact
160583	Spring, Contact
160590	Bracket, Switch Mounting
160593	Terminal
160594	Contact Assembly



* PECULIAR TO LCXD1 (BELL SYSTEM 28B)

FIGURE 13. BAILS
(Fixed Head Transmitter)

NUMERICAL INDEX - FIGURE 13

Part Number	Description
3599	Nut (4-40 Hex)
6807	Screw, Set (6-40 x 3/16)
60669	Spring, Pusher Bail
74707	Spring, Feed Lever (Fixed Transmitter)
90752	Washer, Felt
101123	Washer, Felt
110743	Washer, Lock
119648	Ring, Retaining
119652	Ring, Retaining
125011	Washer, Flat
125252	Spring, Latch Stripper Bail
150923	Washer, Felt
151737	Screw (4-40 x 11/64 Hex)
151880	Nut (4-40 Hex)
152441	Washer, Flat
156515	Washer, Felt
158522	Pin Assembly, Sensing
158526	Lever, Feed
158527	Rod, Sensing Lever Spring
158542	Spring, Sensing Pin and Tape Lid Pin
158786	Roller, Cam Follower
158805	Lever, Cam Follower (Feed)
158810	Bail, Latch Stripper
158812	Bail, Pusher Stripper
158819	Shaft, Stripper Bail Pivot
158852	Collar, Set
159834	Pin Assembly, Tape Lid
159868	Post, Pin Stop
160595	Pin, Tape Out
160596	Spring

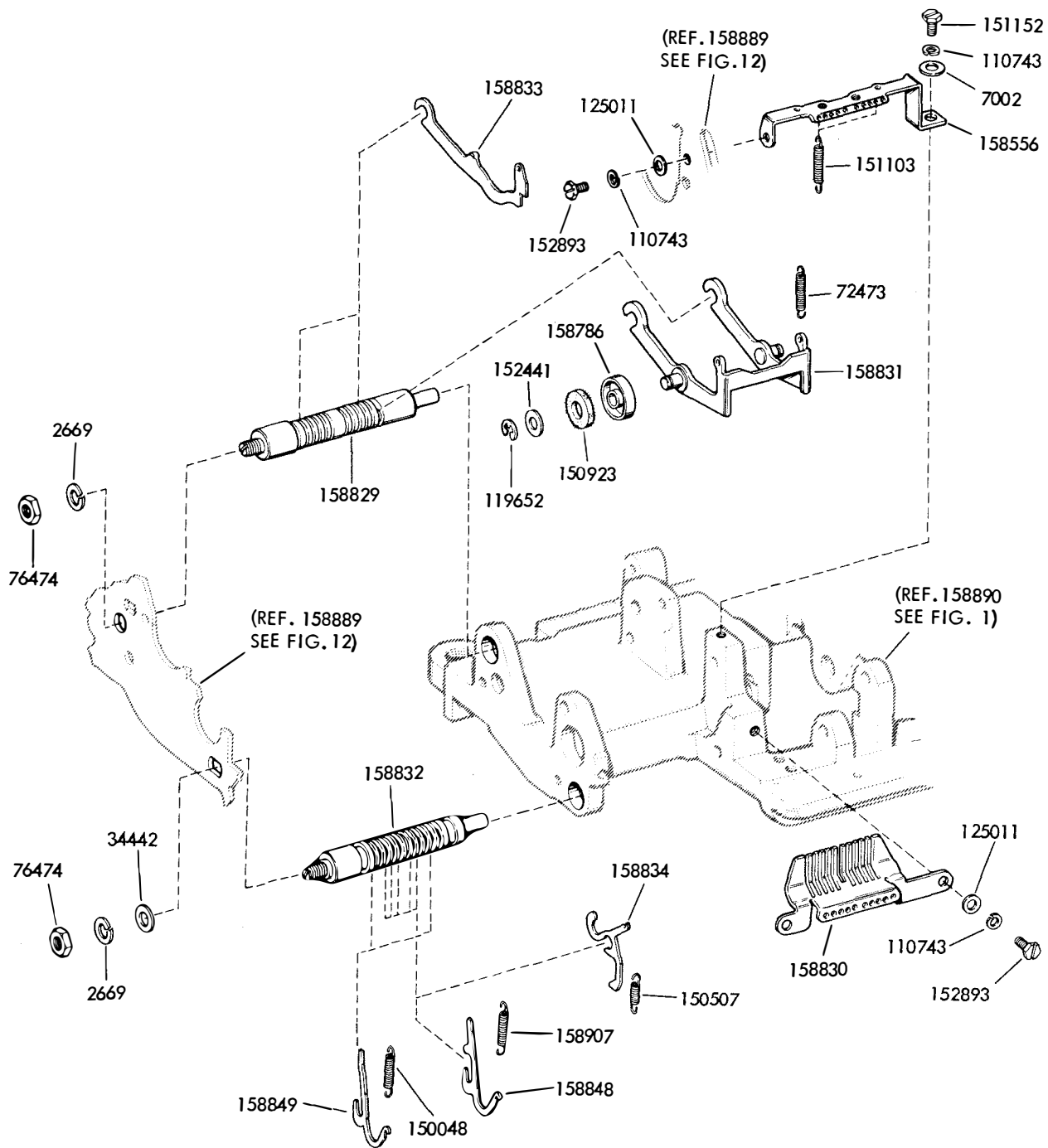
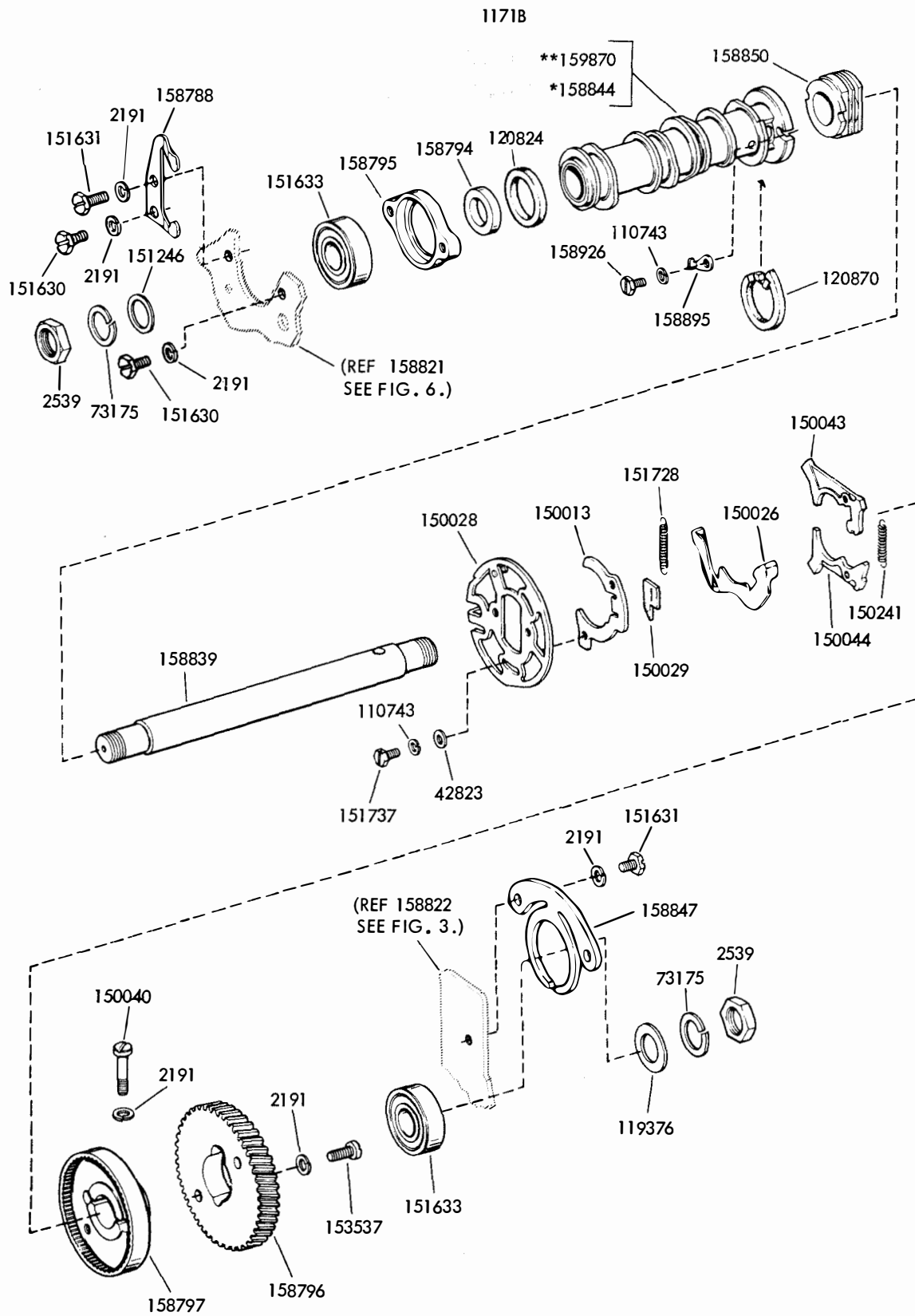


FIGURE 14. SENSING MECHANISM
(Fixed Head Transmitter)

NUMERICAL INDEX - FIGURE 14

Part Number	Description
2669	Washer, Lock
7002	Washer, Flat
34432	Washer, Flat
72473	Spring, Sensing Bail
76474	Nut (10-32 Hex)
110743	Washer, Lock
119652	Ring, Retaining
125011	Washer, Flat
150048	Spring, Pusher
150507	Spring, Latch Lever
150923	Washer, Felt
151103	Spring, Auxiliary Lever
151152	Screw (4-40 x 3/16 Hex)
152441	Washer, Flat
152893	Screw (4-40 x 1/4 Hex)
158556	Bracket, Sensing Lever Spring
158786	Roller, Sensing Bail
158829	Shaft, Sensing Bail Eccentric
158830	Guide, Sensing Lever
158831	Bail, Sensing
158832	Shaft, Pusher Lever Eccentric
158833	Lever, Auxiliary
158834	Lever, Slide Latch
158848	Lever, Pusher
158849	Lever, Auxiliary Pusher
158907	Spring, Pusher Lever



* PECULIAR TO LCXD1 (BELL SYSTEM 28B)

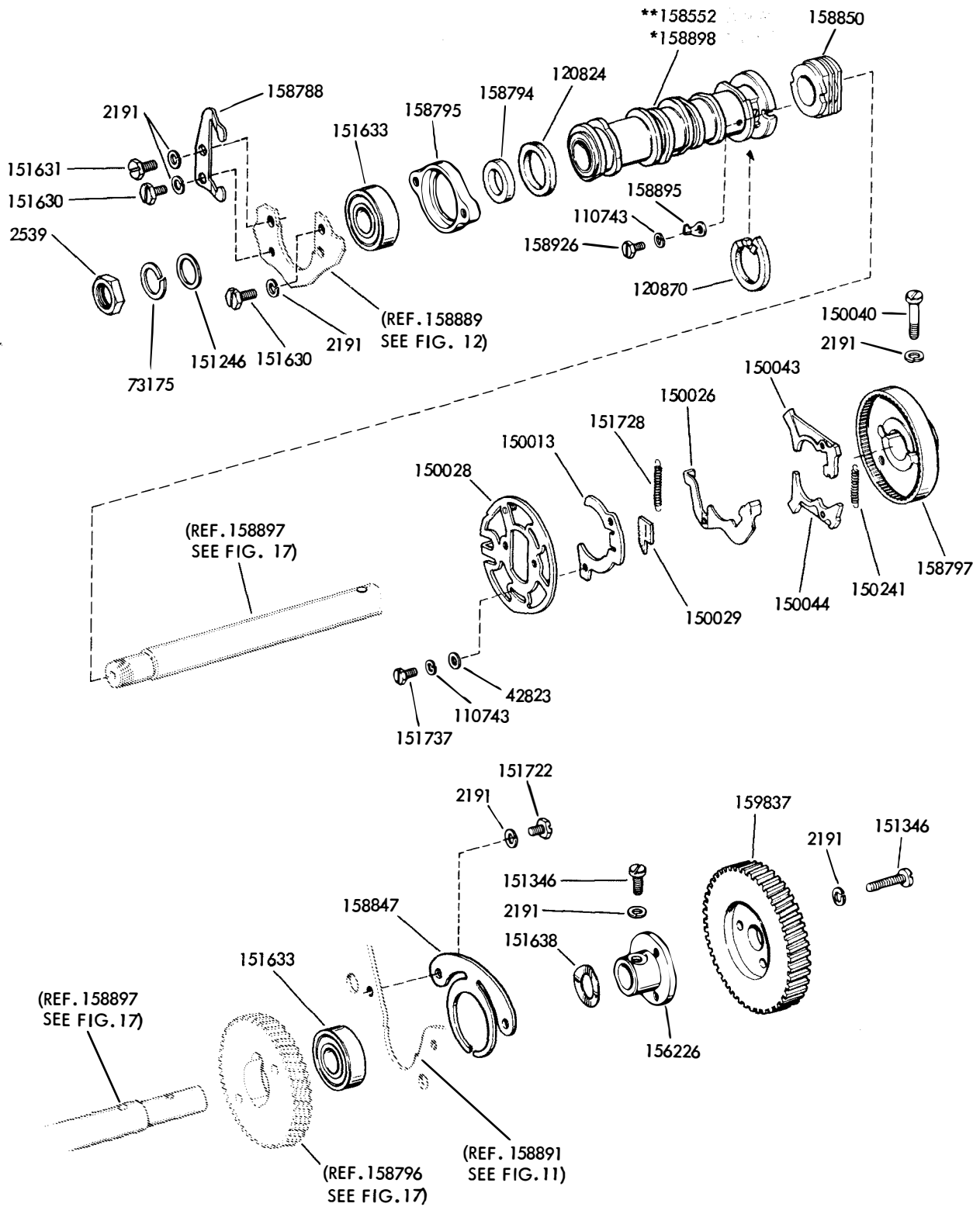
** PECULIAR TO LCXD3

FIGURE 15. SENSING SHAFT
(Pivoted Head Transmitter)

NUMERICAL INDEX - FIGURE 15

Part Number	Description
2191	Washer, Lock
2539	Nut (3/8-32 Hex)
42823	Washer, Flat
73175	Washer, Lock
110743	Washer, Lock
119376	Washer, Felt
120824	Washer, Felt
120870	Wick Assembly, Felt
150013	Disk, Adjusting
150026	Lever, Clutch Shoe
150028	Disk, Clutch Cover
150029	Wick, Felt
150040	Screw (6-40 x 5/8 Fil)
150043	Shoe, Secondary Clutch
150044	Shoe, Primary Clutch
150241	Spring, Clutch Shoe
151246	Washer, Flat
151630	Screw (6-40 x 1/4 Hex)
151631	Screw (6-40 x 5/16 Hex)
151633	Bearing, Ball
151728	Spring, Clutch Shoe Lever
151737	Screw (4-40 x 11/64 Hex)
153537	Screw (6-40 x 9/32 Hex)
158788	Clamp, Bearing
158794	Spacer, Cam Sleeve
158795	Plate, Bearing Retaining
158796	Gear, Helical (46T)
158797	Drum, Clutch
158839	Shaft, Sensing
158844	Sleeve, Sensing Cam (Stamped 158844)
158847	Clamp, Bearing
158850	Bearing, Sleeve
158895	Clip, Wick
158926	Screw (4-40 x 7/32 Hex)
159870	Sleeve, Sensing Cam (Stamped 159870)

1171B



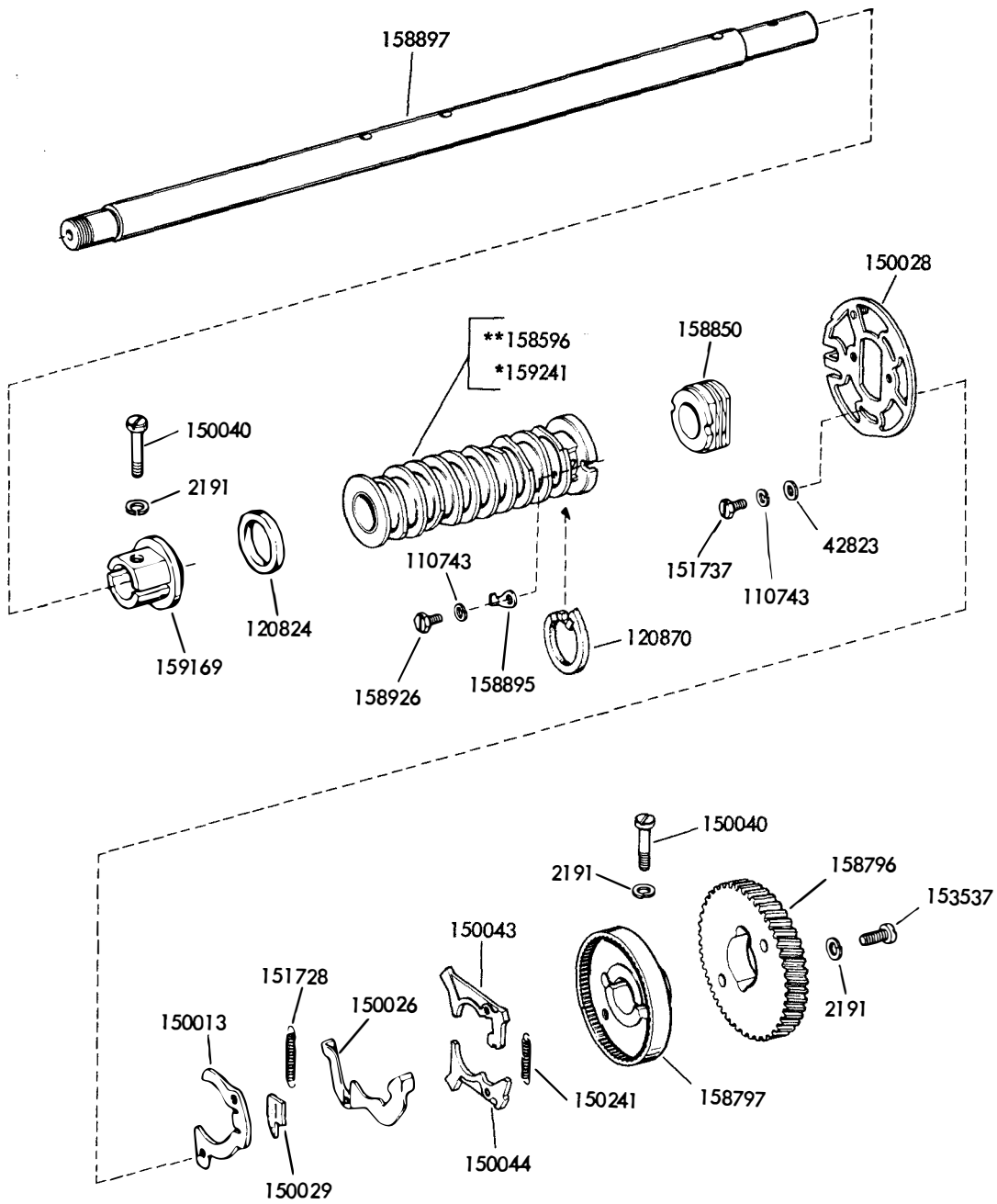
* PECULIAR TO LCXD1 (BELL SYSTEM 28B)

** PECULIAR TO LCXD3

FIGURE 16. SENSING AND DISTRIBUTOR SHAFT - SENSING CAM SLEEVE

NUMERICAL INDEX - FIGURE 16

Part Number	Description
2191	Washer, Lock
2539	Nut (3/8-32 Hex)
42823	Washer, Flat
73175	Washer, Lock
110743	Washer, Lock
120824	Washer, Felt
120870	Wick Assembly, Felt
150013	Disk, Adjusting
150026	Lever, Shoe Release
150028	Disk, Clutch Cam
150029	Wick, Felt
150040	Screw (6-40 x 5/8 Fil)
150043	Shoe, Secondary Clutch
150044	Shoe, Primary Clutch
150241	Spring, Clutch Shoe
151246	Washer, Flat
151346	Screw (6-40 x 3/8 Fil)
151630	Screw (6-40 x 1/4 Hex)
151631	Screw (6-40 x 5/16 Hex)
151633	Bearing, Ball
151638	Washer, Spring
151722	Screw (6-40 x 3/16 Hex)
151728	Spring, Clutch Shoe Lever
151737	Screw (4-40 x 11/64 Hex)
156226	Hub, Gear
158552	Sleeve, Sensing Cam (Stamped 158552)
158788	Clamp, Bearing
158794	Spacer, Cam Sleeve
158795	Plate, Bearing Retaining
158797	Drum, Clutch
158847	Clamp, Bearing
158850	Bearing, Sleeve
158895	Clip, Wick
158898	Sleeve, Sensing Cam (Stamped 158552)
158926	Screw (4-40 x 7/32 Hex)
159837	Gear (48T)



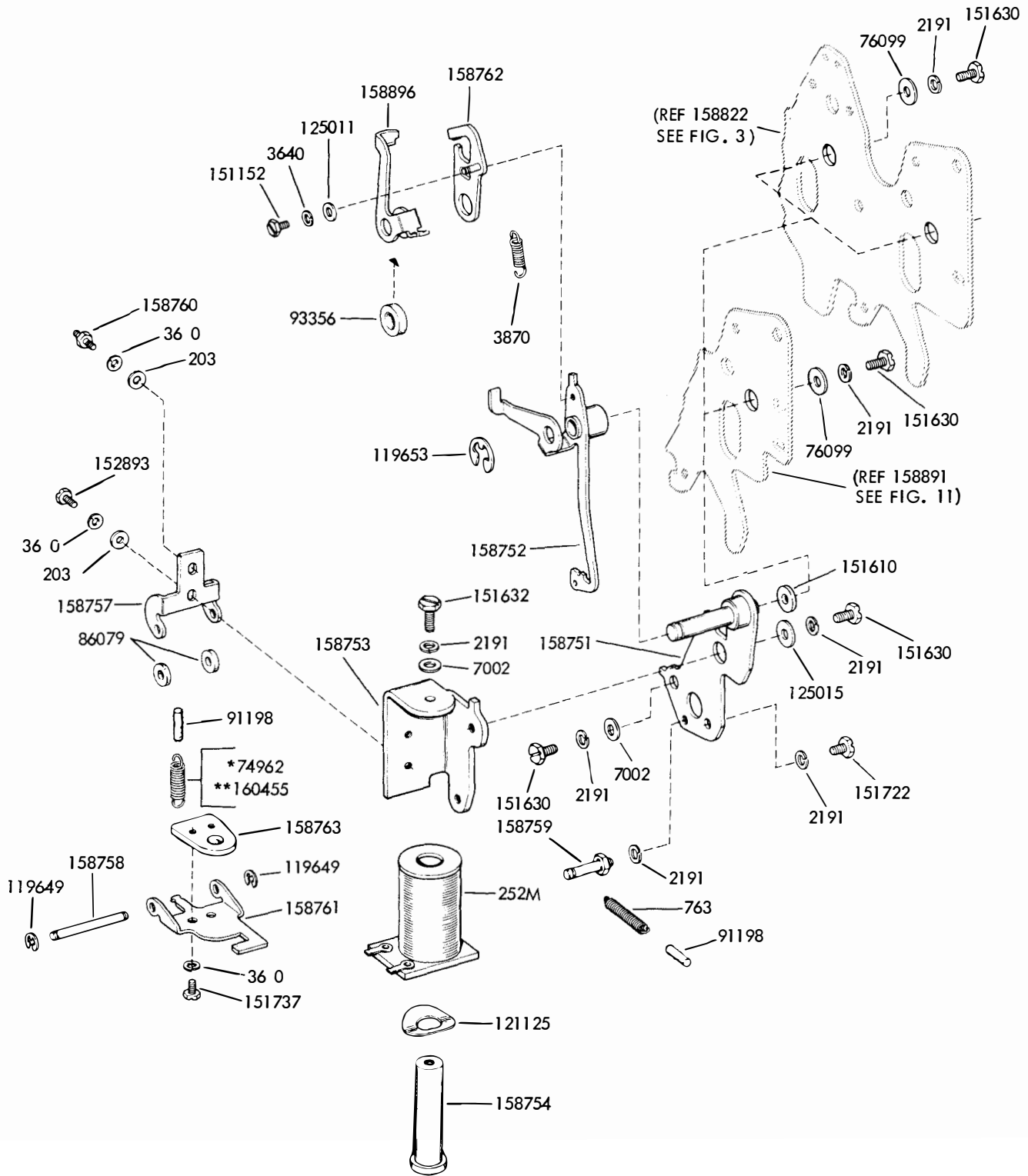
* PECULIAR TO LCXD1 (BELL SYSTEM 28B)

** PECULIAR TO LCXD3

FIGURE 17. SENSING AND DISTRIBUTOR SHAFT - DISTRIBUTOR CAM SLEEVE

NUMERICAL INDEX - FIGURE 17

Part Number	Description
2191	Washer, Lock
42823	Washer, Flat
110743	Washer, Lock
120824	Washer, Felt
120870	Wick Assembly, Felt
150013	Disk, Adjusting
150026	Lever, Clutch Shoe
150028	Disk, Clutch Cam
150029	Wick, Felt
150040	Screw (6-40 x 5/8 Fil)
150043	Shoe, Clutch Secondary
150044	Shoe, Clutch Primary
150241	Spring, Clutch Shoe
151728	Spring, Clutch Shoe Lever
151737	Screw (4-40 x 11/64 Hex)
153537	Screw (6-40 x 9/32 Fil)
158596	Sleeve, Distributor Cam (Stamped 158596)
158796	Gear
158797	Drum, Clutch
158850	Bearing, Sleeve
158895	Clip, Wick
158897	Shaft, Sensing and Distributor
158926	Screw (4-40 x 7/32 Hex)
159169	Spacer
159241	Sleeve, Distributor Cam (Stamped 159241)



NOTE

THESE PARTS ARE COMMON TO
BOTH SENSING AND DISTRIBUTOR
CLUTCH TRIP MECHANISMS

*USED ON PIVOTED HEAD HEAD TRANSMITTER

**USED ON FIXED HEAD TRANSMITTER

FIGURE 18. SENSING AND DISTRIBUTOR CLUTCH TRIP MECHANISM

NUMERICAL INDEX - FIGURE 18

Part Number	Description
252M	Coil, Magnet
2034	Washer, Flat
2191	Washer, Lock
3640	Washer, Lock
3870	Spring, Trip Lever Upper Extension
7002	Washer, Flat
7634	Spring, Trip Lever
74962	Spring, Armature Bail (Pivoted Head)
76099	Washer, Flat
86079	Washer, Felt
91198	Wick, Felt
93356	Washer, Felt
119649	Ring, Retaining
119653	Ring, Retaining
121125	Washer, Spring
125011	Washer, Flat
125015	Washer, Flat
151152	Screw (4-40 x 3/16 Hex)
151610	Washer, Flat
151630	Screw (6-40 x 1/4 Hex)
151632	Screw (6-40 x 3/8 Hex)
151722	Screw (6-40 x 3/16 Hex)
151737	Screw (4-40 x 11/64 Hex)
152893	Screw (4-40 x 1/4 Hex)
158751	Plate, Mounting
158752	Lever, Clutch Trip
158753	Armature, Magnet
158754	Core W/Pin
158757	Hinge, Mounting Armature Bail
158758	Shaft, Armature Bail
158759	Post, Trip Lever Spring
158760	Post, Armature Bail Spring
158761	Bail, Armature
158762	Lever, Trip (Upper Extension)
158763	Bracket, Magnet
158896	Lever, Clutch Latch
160455	Spring, Armature Bail (Fixed Head)

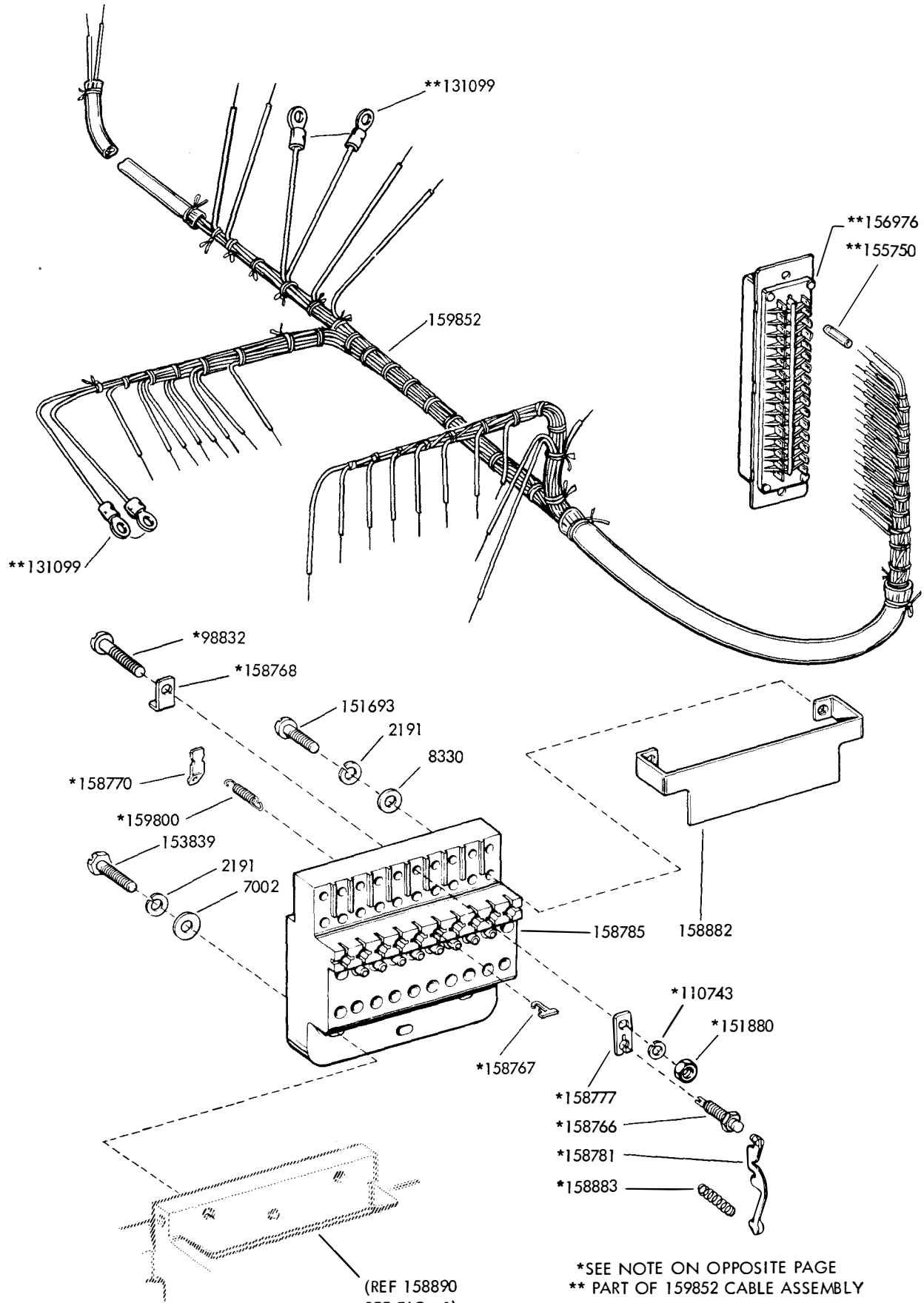


FIGURE 19. DISTRIBUTOR CONTACT BLOCK

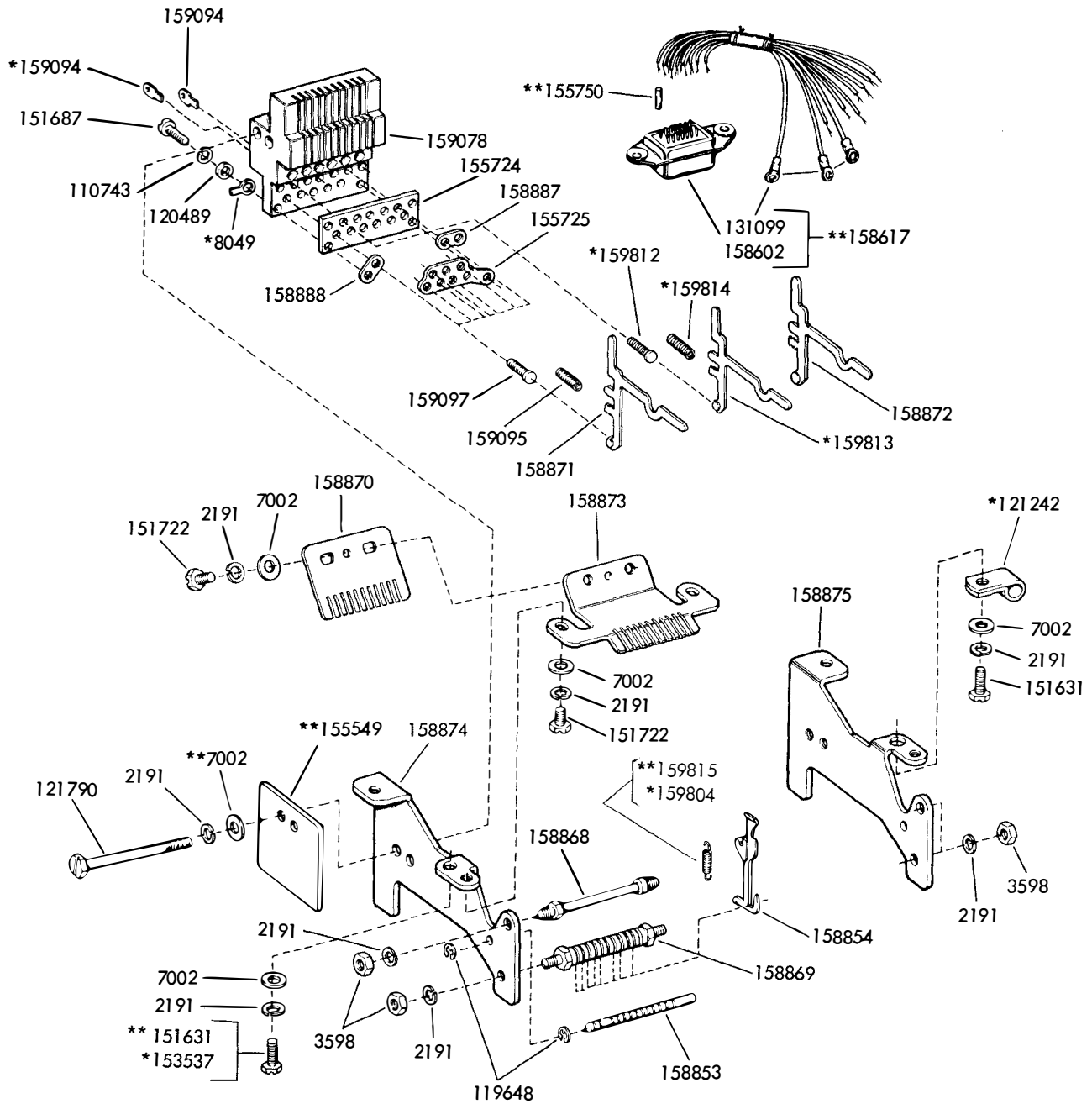
*SEE NOTE ON OPPOSITE PAGE
 ** PART OF 159852 CABLE ASSEMBLY
 (PIVOTED HEAD TRANSMITTER)

NUMERICAL INDEX - FIGURE 19

Part Number	Description
2191	Washer, Lock
7002	Washer, Flat
8330	Washer, Flat
99832	Screw (4-40 x 11/16 Fil)
110743	Washer, Lock
131099	Terminal
151693	Screw (6-40 x 9/16 Fil)
151880	Nut (4-40 Hex)
153839	Screw (6-40 x 5/8 Hex)
155750	Sleeve, Insulating
156976	Connector, Plug (32 pt.)
158766	Screw, Contact
158767	Guide, Rocker Lever
158768	Terminal, Contact
158770	Terminal, Spring Holder
158777	Holder, Contact Screw
158781	Rocker, Contact
158882	Bracket, Oil Guard
158883	Spring, Rocker Compression
158785	Block, Distributor Contact
159800	Spring, Rocker
159852	Cable Assembly

NOTE

THE DISTRIBUTOR CONTACT BLOCK NORMALLY REQUIRES SEVEN (7) OF EACH OF THE PARTS MARKED WITH AN ASTERISK (*), POSITION 8 BEING OPEN. WHEN THE UNIT IS EQUIPPED WITH AN AUXILIARY "B" CONTACT (BELL SYSTEM 28B TRANSMITTER DISTRIBUTOR) EIGHT (8) OF EACH OF THE PARTS ARE REQUIRED.



* PECULIAR TO PIVOTED HEAD TRANSMITTER

** PECULIAR TO FIXED HEAD TRANSMITTER

FIGURE 20. STORING CONTACT SWITCH

NUMERICAL INDEX - FIGURE 20

Part Number	Description
2191	Washer, Lock
3598	Nut (6-40 Hex)
7002	Washer, Flat
8049	Terminal
110743	Washer, Lock
119648	Ring, Retaining
120489	Washer, Flat
121242	Clamp, Cable
121790	Screw (6-40 x 1-5/8 Hex)
131099	Terminal
151631	Screw (6-40 x 5/16 Hex)
151687	Screw (4-40 x 7/16 Fil)
151722	Screw (6-40 x 3/16 Hex)
153537	Screw (6-40 x 9/32 Hex)
155549	Shield
155724	Strip Insulating
155725	Plate, Center Contact Terminal
155750	Sleeve, Insulating
158602	Connector, Receptacle (32 Pt.)
158617	Cable Assembly
158853	Post, Spring
158854	Slide, Storing Switch
158868	Post, Slide Stop
158869	Shaft, Slide Eccentric
158870	Guide, Contact Lever
158871	Lever, Storing Switch Lower Contact
158872	Lever, Storing Switch Upper Contact
158873	Guide, Slide Lever
158874	Plate, Storing Switch Front
158875	Plate, Storing Switch Rear
158887	Plate, Rear Contact Terminal
158888	Plate, Front Contact Terminal
159078	Block, Storing Switch Contacts
159094	Plate, Contact Spring Terminal
159095	Spring, Contact
159097	Screw, Storing Switch Contact
159804	Spring, Slide
159812	Screw, Storing Switch Contact (Tape-Out Pin)
159813	Lever, Storing Switch Contact (Tape-Out Pin)
159814	Spring, Rocker Compression (Tape-Out Pin)
159815	Spring, Slide (Tape-Out 6th Pin)

MASTER NUMERICAL INDEX

Numbers following the description indicate the page

252M	Coil - 35	90752	Felt Washer - 7, 25
2034	Flat Washer - 3, 5, 23, 35	91198	Wick - 35
2191	Lock Washer - 1, 5, 7, 9, 11, 13, 17, 19, 21, 23, 29, 31, 33, 35, 37, 39	93118	Lock Washer - 5
2539	Nut (3/8-32 Hex) - 29, 31	93356	Felt Washer - 35
2669	Lock Washer - 9, 11, 27	93587	Flat Washer - 23
3595	Nut (1/4-32) - 5	94526	Post - 17
3598	Nut (6-40 Hex) - 5, 7, 9, 11, 13, 19, 21, 23, 39	99832	Screw (4-40 x 11/16 Fil) - 37
3599	Nut (4-40 Hex) - 11, 13, 15, 19, 25	101123	Felt Washer - 25
3606	Nut (6-40 Hex) - 5, 17	102092	Screw (6-40 x 1-9/16 Rd) - 21
3640	Lock Washer - 3, 5, 9, 11, 35	104451	Lock Washer - 5
3870	Spring - 35	104751	Spring - 15
5740	Screw (2-56 x 1/4 Fil) - 5	109762	Fiber Washer - 21
6807	Set Screw (6-40 x 3/16) - 7, 25	109909	Felt Washer - 3
6970	Nut (3/8-32 Hex) - 11	110435	Nut (4-40 Hex) - 3
7002	Flat Washer - 1, 7, 9, 11, 13, 17, 19, 21, 23, 27, 35, 37, 39	110743	Lock Washer - 3, 5, 7, 9, 13, 15, 17, 19, 21, 23, 25, 27, 29, 31, 33, 37, 39
7634	Spring - 35	111342	Spring - 17
8049	Terminal - 39	112352	Flat Washer - 5
8330	Flat Washer - 37	112626	Nut (10-32 Hex) - 11
8543	Screw (6-40 x 1/4 Fil) - 5	115221	Felt Washer - 23
34432	Flat Washer - 9, 27	119376	Felt Washer - 29
41732	Plate - 3, 23	119647	Retaining Ring - 15
41733	Washer - 3	119648	Retaining Ring - 3, 11, 25, 39
42823	Flat Washer - 29, 31, 33	119649	Retaining Ring - 15, 19, 35
45104	Spring - 7	119651	Retaining Ring - 15, 17
56064A	Flat Washer - 5	119652	Retaining Ring - 7, 9, 25, 27
60669	Spring - 7, 25	119653	Retaining Ring - 17, 35
70073	Nut (3-48 Hex) - 3	120489	Flat Washer - 17, 39
70388	Spring - 17	120824	Felt Washer - 29, 31, 33
71073	Flat Washer - 5	120870	Wick Assembly - 29, 31, 33
72473	Spring - 9, 27	121125	Washer - 35
72522	Wick - 5	121242	Clamp - 39
73175	Lock Washer - 29, 31	121244	Clamp - 1
74707	Spring - 25	121246	Clamp - 1, 21
74728	Terminal - 23	121790	Screw (6-40 x 1-5/8 Hex) - 39
74952	Screw (4-40 x 5/8 Fil) - 3	125011	Flat Washer - 3, 5, 7, 9, 13, 15, 19, 21, 23, 25, 27, 35
74962	Spring - 5, 21, 35	125015	Flat Washer - 35
75229	Spring - 5	125252	Spring - 7, 25
76099	Flat Washer - 21, 35	131099	Terminal - 1, 37, 39
76333	Bushing - 23	150013	Disk - 29, 31, 33
76474	Nut (10-32 Hex) - 9, 11, 27	150026	Lever - 29, 31, 33
77039	Bushing - 3	150028	Disk - 29, 31, 33
81726	Terminal - 3	150029	Wick - 29, 31, 33
81895	Post - 17	150040	Screw (6-40 x 5/8 Fil) - 29, 31, 33
82547	Insulator - 19, 23	150043	Shoe - 29, 31, 33
82548	Insulator - 19, 23	150044	Shoe - 29, 31, 33
82727	Spring - 7	150048	Spring - 9, 27
82999	Spring - 3	150241	Spring - 29, 31, 33
84575	Spring - 11	150507	Spring - 9, 27
85318	Leather Washer - 5	150923	Felt Washer - 7, 9, 25, 27
86079	Felt Washer - 35	151103	Spring - 9, 27
86959	Bushing - 19, 23	151152	Screw (4-40 x 3/16 Hex) - 5, 9, 15, 23, 27, 35
87402	Spring - 17	151246	Flat Washer - 29, 31
90436	Wick - 5	151346	Screw (6-40 x 3/8 Fil) - 17, 31

MASTER NUMERICAL INDEX

Numbers following the description indicate the page

151395	Spring - 17	156779	Plunger - 13
151610	Flat Washer - 35	156782	Nut - 23
151630	Screw (6-40 x 1/4 Hex) - 1, 11, 17, 19, 21, 23, 29, 31, 35	156811	Guide - 15
151631	Screw (6-40 x 5/16 Hex) - 1, 5, 11, 21, 23, 29, 31, 39	156857	Bail - 17
151632	Screw (6-40 x 3/8 Hex) - 21, 23, 35	156976	Connector (32 Pt) - 1
151633	Ball Bearing - 29, 31	158216	Plate - 5
151638	Spring Washer - 31	158501	Plate - 19
151685	Screw (4-40 x 5/16 Fil) - 5	158502	Plate - 19
151687	Screw (4-40 x 7/16 Fil) - 39	158506	Lever - 17
151692	Screw (6-40 x 3/16 Fil) - 5, 21	158508	Pawl Assembly - 17
151693	Screw (6-40 x 9/16 Fil) - 37	158514	Plate - 13
151694	Screw (6-40 x 9/16 Fil) - 31	158515	Bracket - 13
151715	Spring - 15	158516	Rod - 13
151721	Screw (6-40 x 3/4 Hex) - 21	158517	Spring - 13
151722	Screw (6-40 x 3/16 Hex) - 35, 39	158521	Plate - 13
151728	Spring - 29, 31, 33	158522	Pin - 25
151731	Screw (4-40 x 7/8 Fil) - 23	158526	Lever - 25
151733	Screw (4-40 x 9/16 Fil) - 19, 23	158527	Rod - 25
151737	Screw (4-40 x 11/64 Hex) - 9, 25, 29, 31, 33, 35	158529	Guide - 17
151846	Post - 17	158530	Spacer - 17
151880	Nut (4-40 Hex) - 3, 7, 15, 23, 25, 37	158531	Shaft - 17
152441	Flat Washer - 7, 9, 25, 27	158533	Bushing - 17
152893	Screw (4-40 x 1/4 Hex) - 3, 5, 9, 13, 15, 19, 21, 23, 27, 35	158534	Post - 17
153267	Felt Washer - 3	158536	Plate - 17
153537	Screw (6-40 x 9/32 Hex) - 29, 33, 39	158539	Post - 23
153799	Screw (4-40 x 21/64 Hex) - 3, 19	158540	Post - 23
153819	Lock Washer - 3	158542	Spring - 25
153839	Screw (6-40 x 5/8 Hex) - 37	158552	Sleeve - 31
155724	Insulating Strip - 39	158554	Post - 21
155725	Plate - 39	158556	Bracket - 9, 27
155549	Shield - 39	158560	Plate - 21
155750	Insulating Sleeve - 1, 37, 39	158561	Bushing - 5, 21, 23
156226	Hub - 31	158576	Spacer - 21
156476	Connector (32 Pt) - 37	158596	Sleeve - 33
156515	Felt Washer - 25	158602	Connector (32 Pt) - 39
156549	Lid - 15	158617	Cable Assembly - 39
156551	Guide - 15	158625	Bracket - 15
156552	Bracket - 15	158626	Bracket - 15
156553	Post - 15	158627	Plate - 15
156554	Bail - 15	158751	Plate - 35
156555	Plunger - 15	158752	Lever - 35
156556	Bracket - 13, 15	158753	Armature - 35
156558	Felt Washer - 15	158754	Core - 35
156559	Post - 15	158757	Hinge - 35
156560	Bail - 15	158758	Shaft - 35
156561	Shaft - 15	158759	Post - 35
156562	Bracket - 15	158760	Post - 35
156572	Felt Washer - 17	158761	Bail - 35
156577	Roller - 17	158762	Lever - 35
156632	Screw (6-40 x 11/32 Hex) - 5	158763	Bracket - 35
156636	Wheel - 23	158766	Screw - 37
156647	Lever - 15	158767	Guide - 37
156673	Bail - 15	158768	Terminal - 37
		158770	Terminal - 37
		158771	Shaft - 11
		158777	Holder - 37
		158778	Post - 11

MASTER NUMERICAL INDEX

Numbers following the description indicate the page

158779	Lever - 11	158869	Shaft - 39
158780	Guide - 11	158870	Guide - 39
158781	Rocker - 37	158871	Lever - 39
158785	Block - 37	158872	Lever - 39
158786	Roller - 7, 9, 25, 27	158873	Guide - 39
158788	Clamp - 29, 31	158874	Plate - 39
158789	Plug - 5	158875	Plate - 39
158790	Stud - 5	158882	Bracket - 37
158791	Gear - 5	158883	Spring - 37
158792	Spacer - 5	158784	Lever - 7
158794	Spacer - 29, 31	158887	Plate - 39
158795	Plate - 29, 31	158888	Plate - 39
158796	Gear - 29, 31	158889	Plate - 23
158797	Drum - 29, 31, 33	158890	Main Casting - 1
158798	Pin - 9	158891	Plate - 21
158799	Pin - 9	158893	Post - 11
158800	Pivot - 11	158894	Post - 11
158801	Screw - 11	158895	Clip - 29, 31, 33
158805	Lever - 7, 25	158896	Lever - 35
158807	Screw (3-48 x 11/64 Fil) - 3	158897	Shaft - 33
158810	Bail - 7, 25	158898	Sleeve - 31
158812	Bail - 7, 25	158899	Plate - 13
158813	Cover - 3	158900	Plate - 15
158815	Spring - 3	158907	Spring - 9, 27
158816	Spring - 3	158926	Screw (4-40 x 7/32 Hex) - 29, 31, 33
158817	Stiffener - 3	159094	Plate - 39
158818	Bracket - 3	159095	Spring - 39
158819	Shaft - 7, 25	159097	Screw - 39
158821	Plate - 11	159078	Block - 39
158822	Plate - 5	159138	Stud - 3
158823	Wheel - 3	159143	Spring - 3
158828	Bushing - 11	159147	Latch - 3
158829	Shaft - 9, 27	159150	Yoke - 3
158830	Guide - 9, 27	159153	Plate - 3
158831	Bail - 9, 27	159155	Lid - 3
158832	Shaft - 9, 27	159158	Deflector - 3
158833	Lever - 9, 27	159164	Bracket - 9
158834	Lever - 9, 27	159165	Plate - 23
158839	Shaft - 29	159166	Plate - 13
158844	Sleeve - 29	159169	Spacer - 33
158846	Post - 9, 23	159241	Sleeve - 33
158847	Clamp - 29, 31	159293	Arm - 17
158848	Lever - 9, 27	159313	Reservoir Assembly - 5
158849	Lever - 9, 27	159314	Reservoir - 5
158850	Bearing - 29, 31, 33	159316	Wick - 5, 21
158852	Collar - 7, 25	159317	Retainer - 5, 21
158853	Post - 39	159347	Bail - 17
158854	Slide - 39	159738	Spacer - 21
158855	Extension - 5	159800	Spring - 37
158859	Post - 5, 11, 21	159802	Pawl - 3
158860	Bar - 5, 21	159803	Stud - 3
158861	Nut - 5	159804	Spring - 39
158862	Bracket - 5	159805	Flat Washer - 3
158863	Depressor - 5	159806	Shaft - 3
158866	Wick - 5	159808	Screw - 1
158867	Retainer - 5	159812	Screw - 39
158868	Post - 39	159813	Lever - 39

MASTER NUMERICAL INDEX

Numbers following the description indicate the page

159814	Spring - 39	160544	Shaft - 17
159815	Spring - 39	160545	Post - 17
159816	Stud - 5	160546	Post - 17
159825	Stud - 21	160548	Bail - 17
159834	Pin - 25	160552	Arm - 19
159837	Gear - 31	160556	Stud - 19
159851	Cover - 1	160557	Arm - 19
159852	Cable Assembly - 37	160558	Arm - 19
159857	Cable Assembly - 1	160562	Screw - 5
159858	Reservoir - 21	160563	Wick - 5
159868	Post - 25	160564	Stiffener - 5
159870	Sleeve - 29	160565	Bail - 5
159906	Stud - 5	160566	Bracket - 5
160398	Spring - 19	160567	Reservoir - 5
160399	Spring - 19	160583	Spring - 23
160400	Contact Assembly - 19	160590	Bracket - 23
160401	Bracket - 19	160592	Bail - 17
160402	Bracket - 19	160593	Terminal - 19, 23
160403	Contact Assembly - 23	160594	Contact Assembly - 23
160404	Spring - 23	160595	Pin - 25
160455	Spring - 35	160596	Spring - 25
158535	Post - 17		

