

# TELETYPE

## PRINTING TELEGRAPH SYSTEMS

PARTS  
MAGNET CONTROLLED  
REPERFORATOR  
(ARPE)



**ATTENTION - BELL SYSTEM ONLY**  
WHEN ORDERING PARTS FROM THIS BULLETIN, EACH NUMBER SHOULD BE PRECEDED BY THE LETTERS TP, WITHOUT PARENTHESES, IN ORDER TO IDENTIFY THE ITEM AS ONE TO BE SECURED FROM THE TELETYPE CORPORATION.

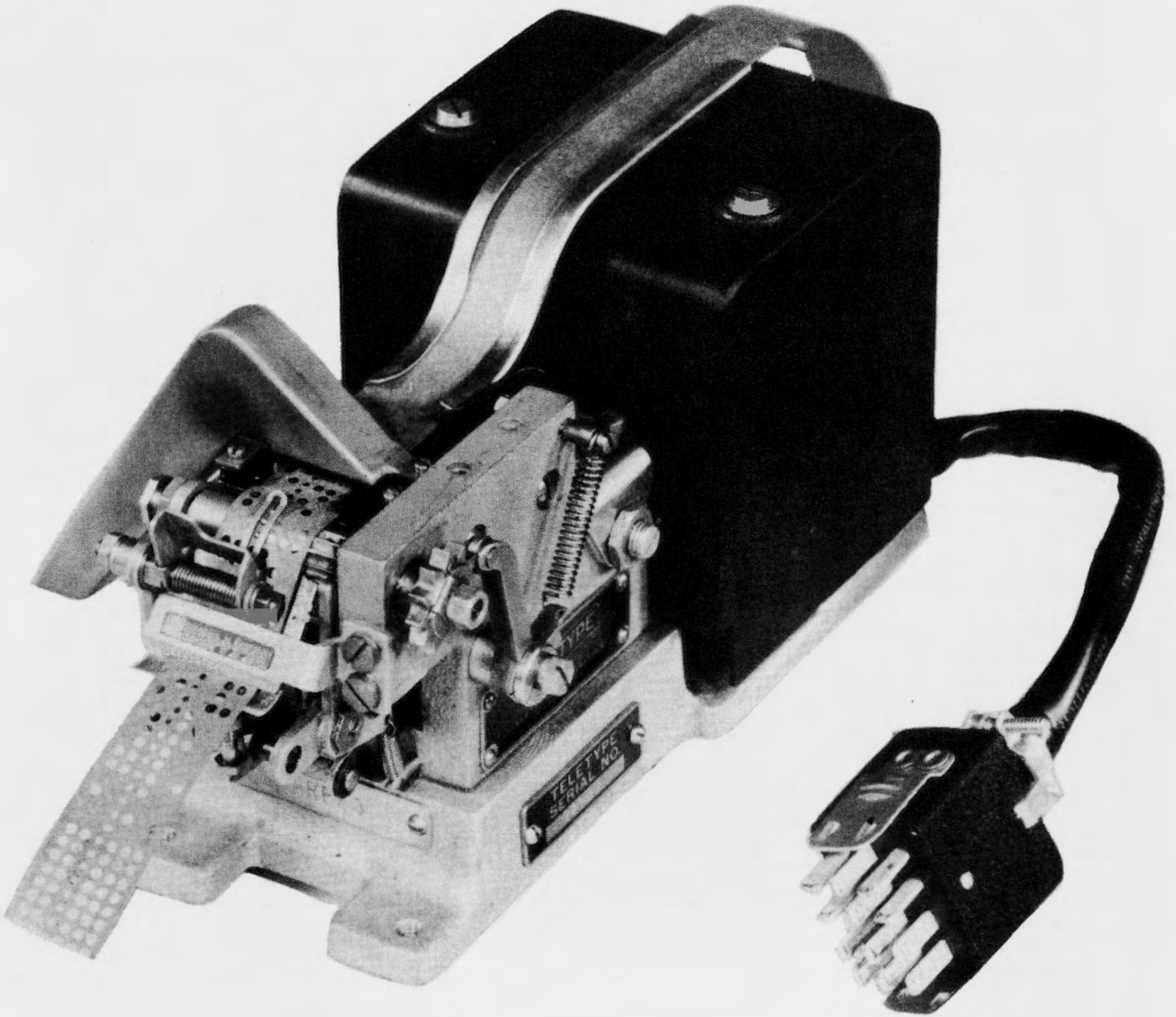
## LIST OF EFFECTIVE PAGES

JULY, 1954

PAGE NUMBERS	CHANGE IN EFFECT	PAGE NUMBERS	CHANGE IN EFFECT
A to C	Original		
1 to 15	Original		

The above list indicates the effective pages as of the date of issue. When a change takes place in any of the following pages this page likewise changes.

1153E.



MAGNET CONTROLLED REPERFORATOR  
(ARPE3 ILLUSTRATED)

ORIGINAL

B

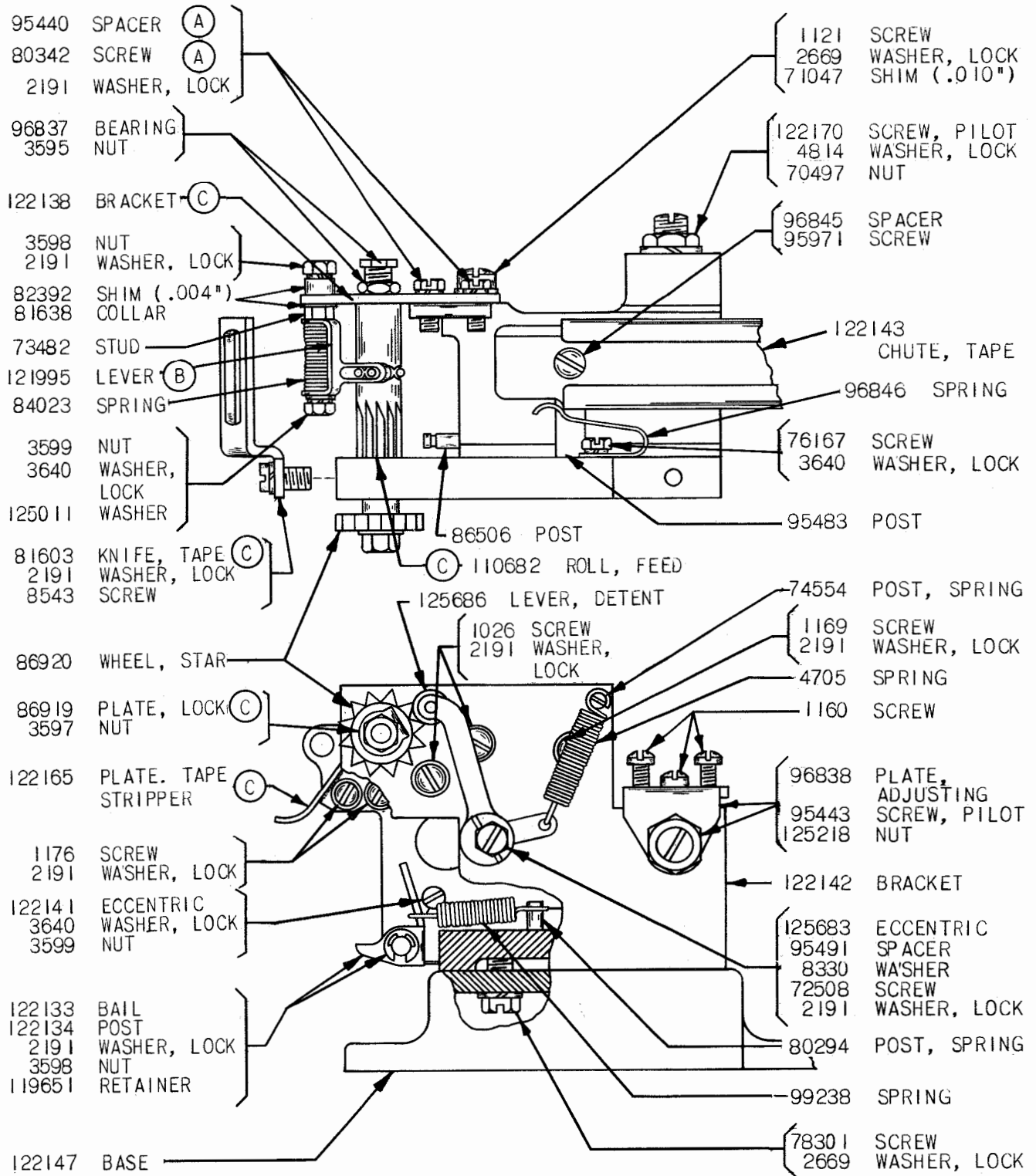
## ALPHABETICAL INDEX

BASE . . . . .	1	PLUG . . . . .	4
CABLE . . . . .	4	PUNCH BLOCKS. . . . .	3, 5, 6, 7, 8, 9, 11, 13
CABLE CLAMP. . . . .	4	SELECTOR BAR BAIL ASSEMBLY . . . . .	2
CHAD CHUTES. . . . .	5, 6, 8, 9, 11, 13	SELECTOR BARS. . . . .	2, 10, 12
CODE PUNCH BRACKET. . . . .	1	TAPE CHUTES. . . . .	1, 7, 8, 9, 11
COILS . . . . .	4, 10, 12	TAPE KNIVES . . . . .	1, 5
COVER. . . . .	3	TAPE TENSION LEVERS . . . . .	1, 5, 6
MAGNET ASSEMBLIES . . . . .	4, 10, 12	TERMINAL STRIP. . . . .	4

VARIATIONS IN THE MAGNET CONTROLLED REPERFORATORS CATALOGED HEREIN									
ARPE UNIT		1	2	3	5	6	7	8	9
NO. OF TAPES PERFORATED SIMULTANEOUSLY		1	4	2	1	1	1	1	1
TAPE PERFORATIONS	CHADLESS	X			X				
	FULLY PERFORATED		X	X		X	X	X	X
STYLE OF PUNCH	CONCAVE	X			X				
	NOTCHED		X	X		X	X	X	X
ADDITIONAL PUNCH FOR NOTCHING SIDE OF TAPE			X						X
STYLE OF FEED HOLE	IN LINE	X	X	X			X		X
	ADVANCED				X	X		X	
WIDTH OF TAPE USED	.688"	X	X	X					X
	.875"				X	X	X	X	
UNIT CODE	FIVE	X	X	X					X
	SIX				X	X	X		
	SEVEN							X	

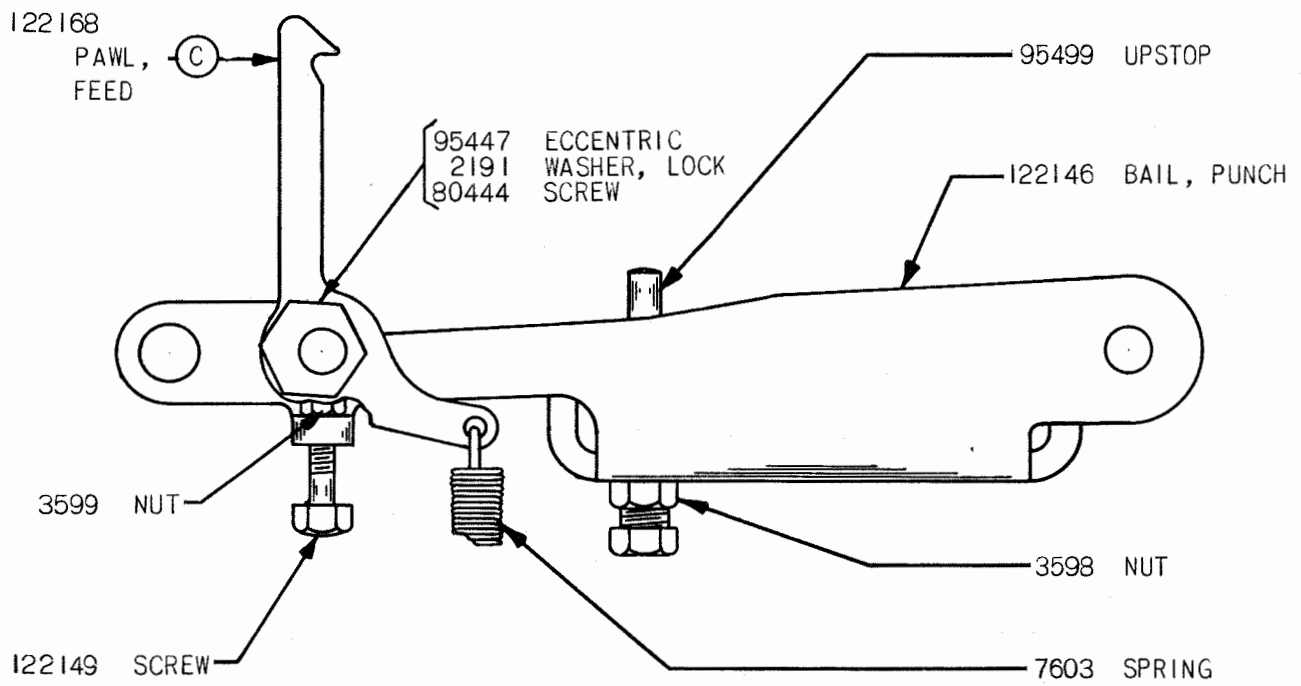
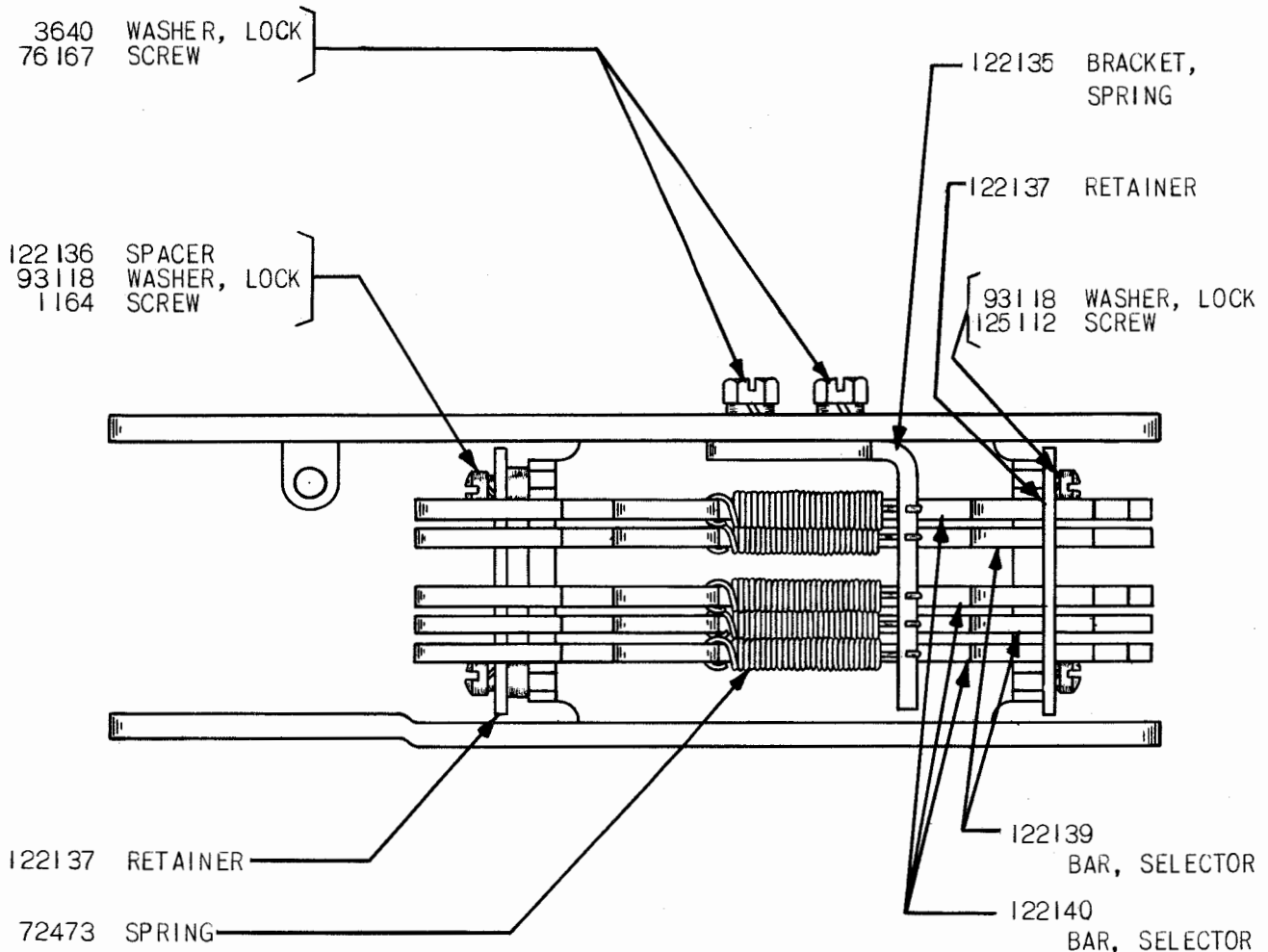
NOTE 1: THE 113689 SET OF PARTS TO CONVERT AN ARPE2 (4 TAPE) TO AN ARPE3 (2 TAPE) INCLUDES ALL PARTS MARKED (A) AND (C) SHOWN ON PAGES 1, 2 AND 6.

NOTE 2: THE 115844 SET OF PARTS TO CONVERT AN ARPE2 (4 TAPE) TO AN ARPE9 (SINGLE TAPE) INCLUDES ALL PARTS MARKED (B) AND (C) SHOWN ON PAGES 1, 2 AND 13.



CODE PUNCH BRACKET ASSEMBLY - ARPEI

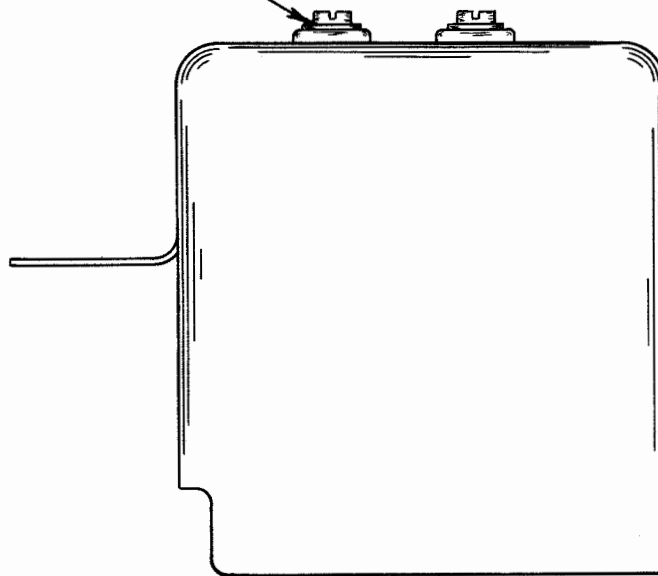
(A)(B)(C) SEE PAGE C, NOTES 1 & 2 FOR EXPLANATION



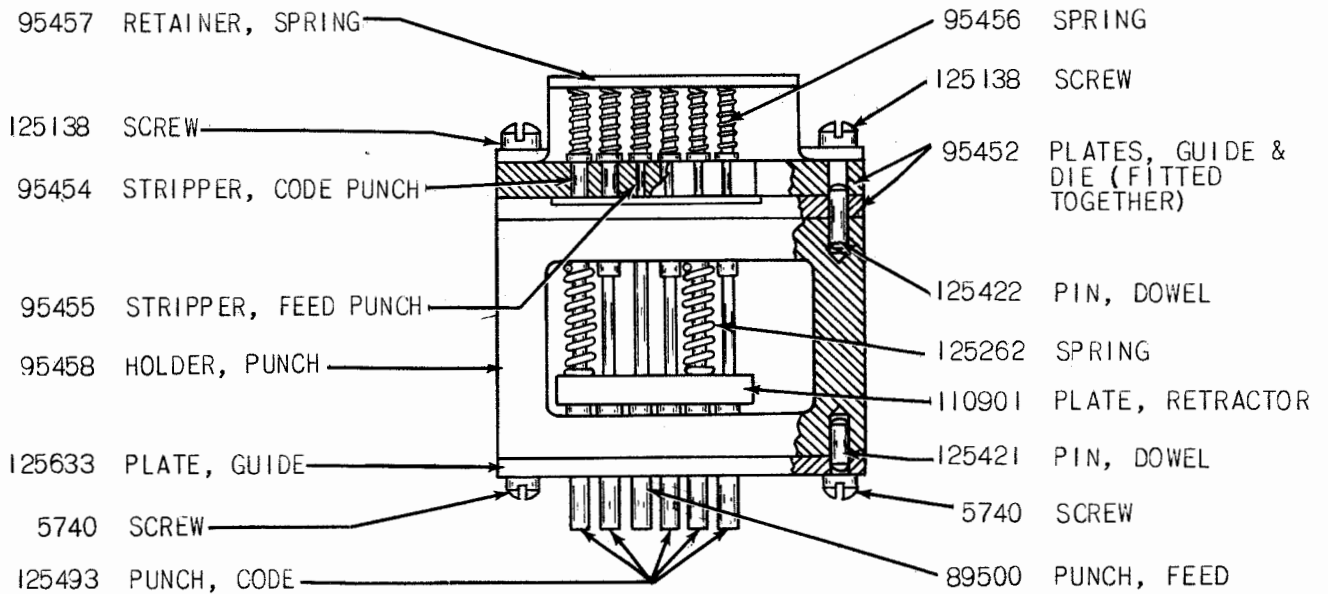
SELECTOR BAR BAIL ASSEMBLY - ARPEI

Ⓒ SEE PAGE C, NOTES 1 & 2 FOR EXPLANATION

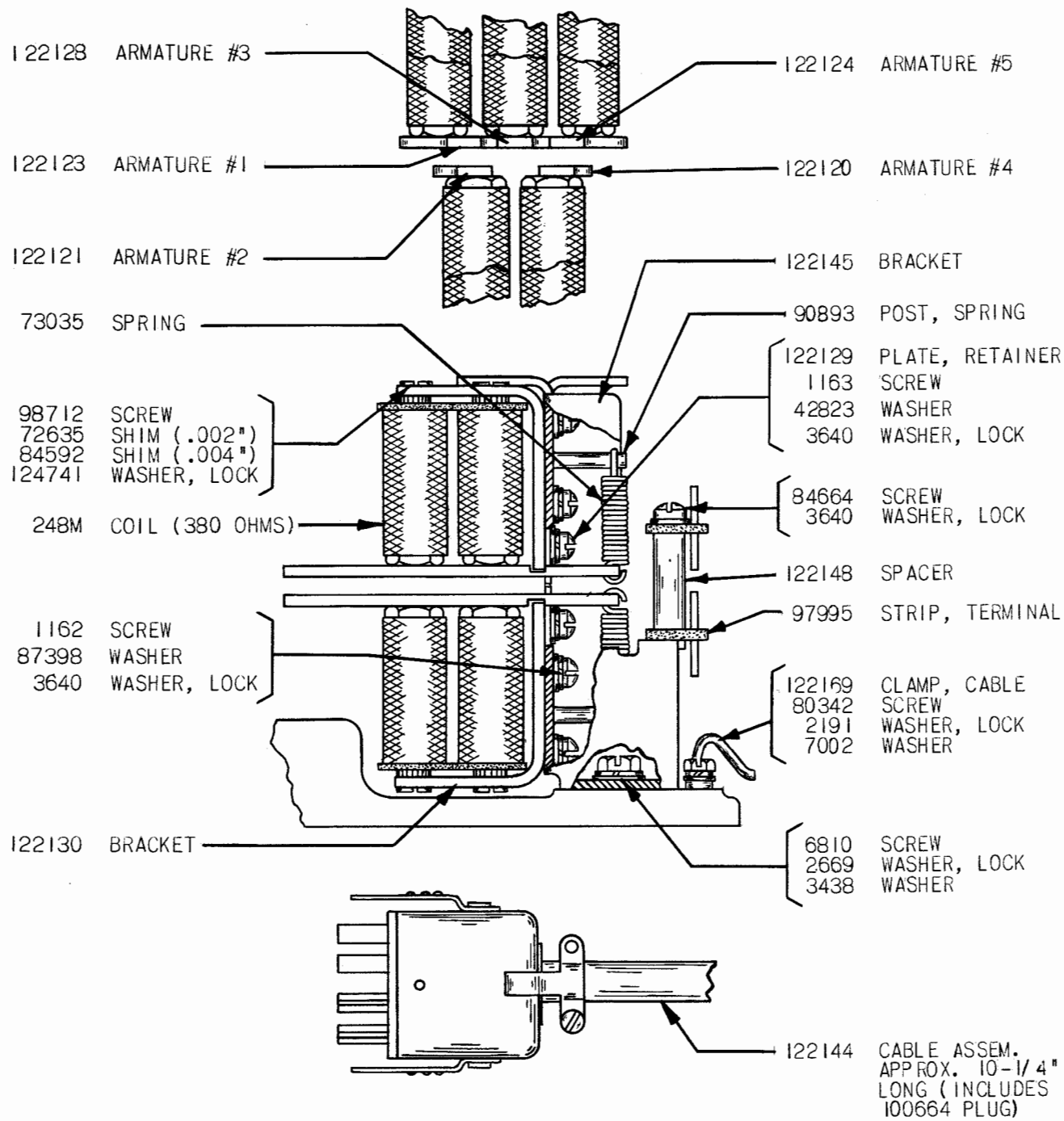
- 122184 GROMMET
- 125125 SCREW
- 125789 WASHER



122153 COVER

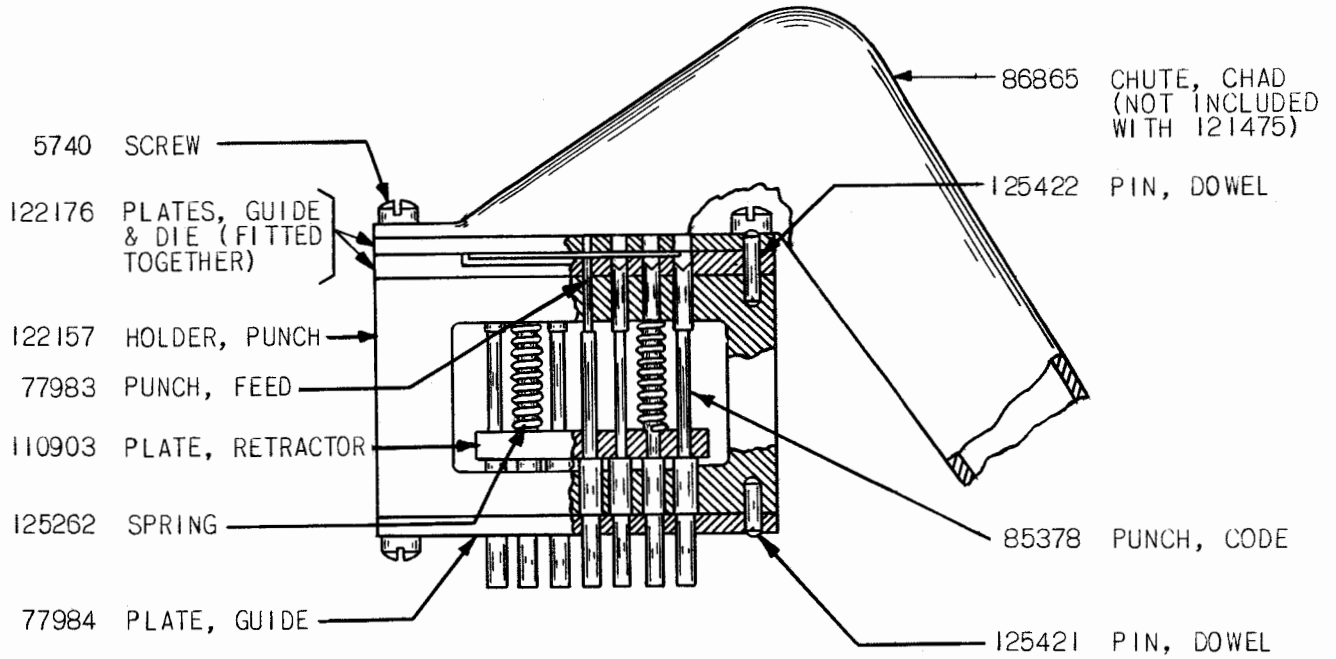


111023 BLOCK ASSEMBLY, PUNCH - ARPEI

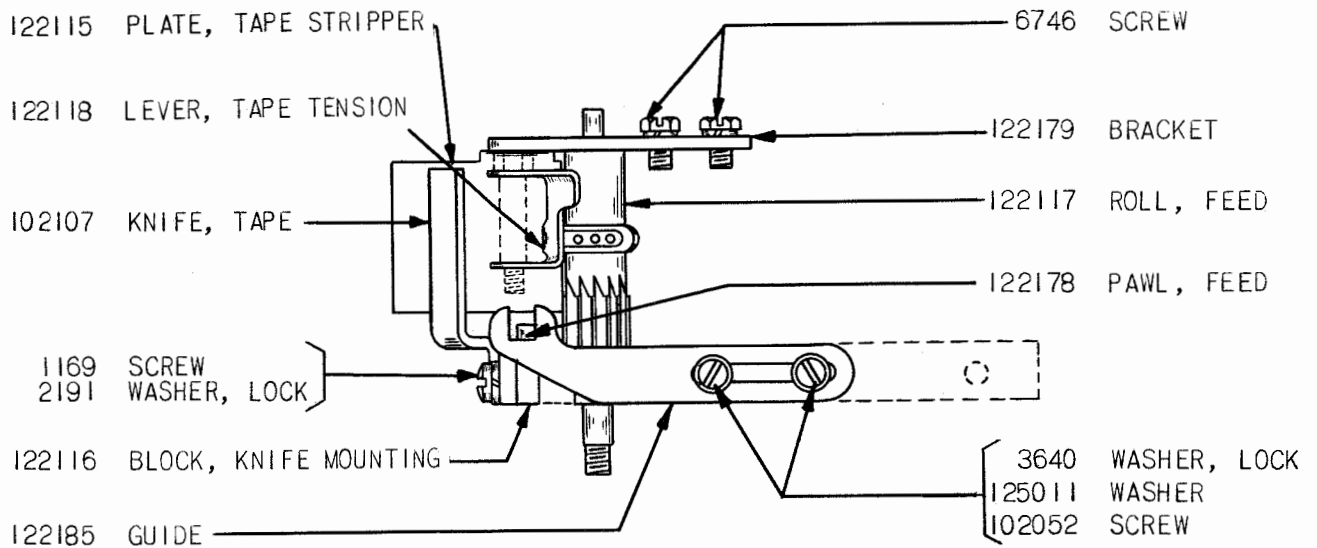


MAGNET ASSEMBLY - ARP E I

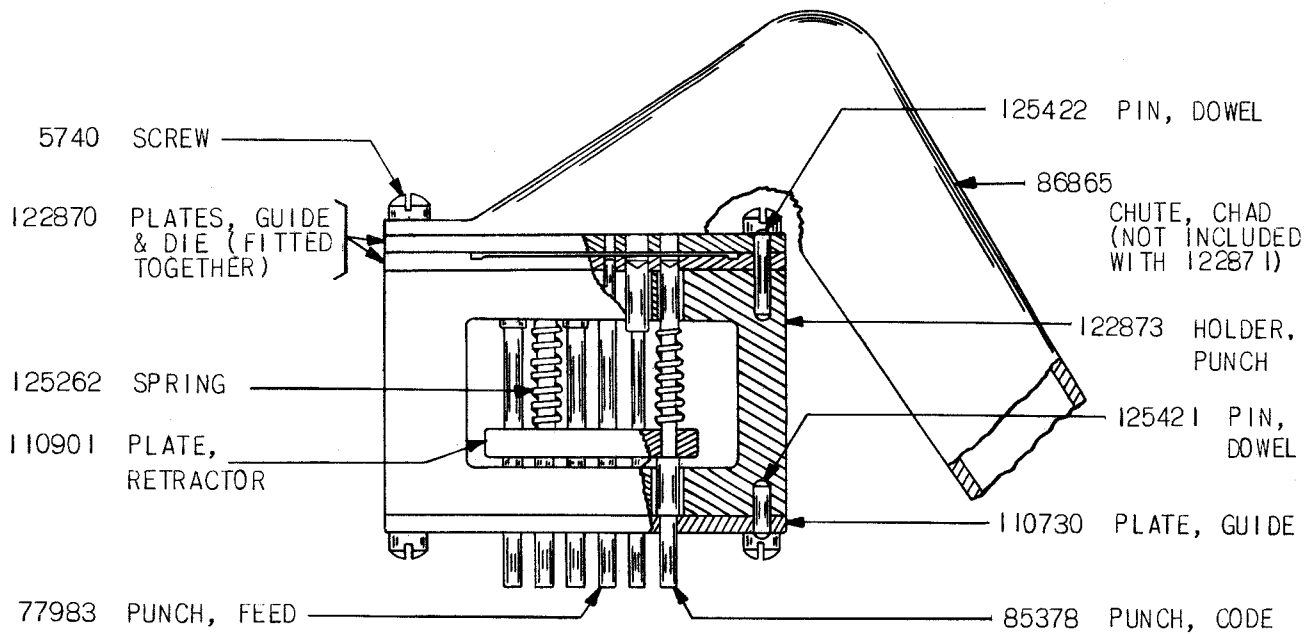




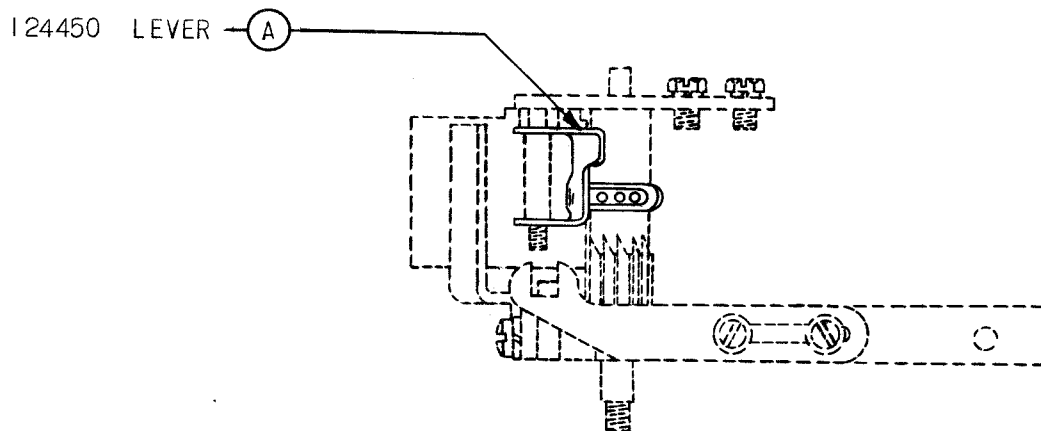
121475 BLOCK ASSEMBLY, PUNCH - ARPE2



PARTS SHOWN ON THIS PAGE AND PAGE 10 ARE PECULIAR TO ARPE2 (4 TAPE, SIDE NOTCHING REPERFORATOR). ALL OTHER PARTS ARE IDENTICAL TO THOSE USED ON ARPE1.

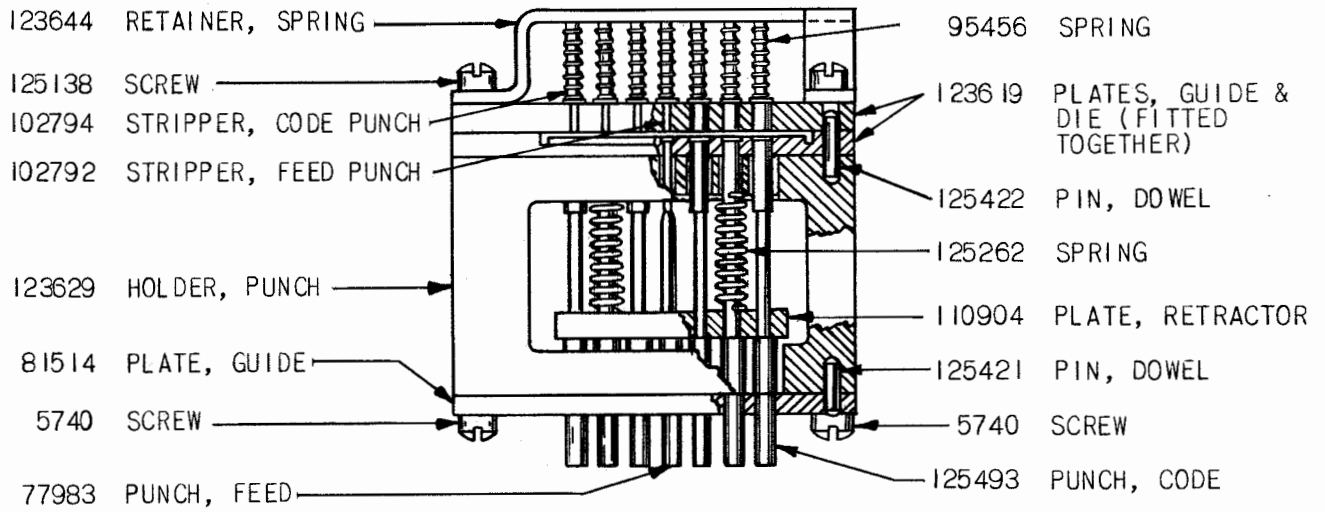


(A) 122871 BLOCK ASSEMBLY, PUNCH - ARPE3

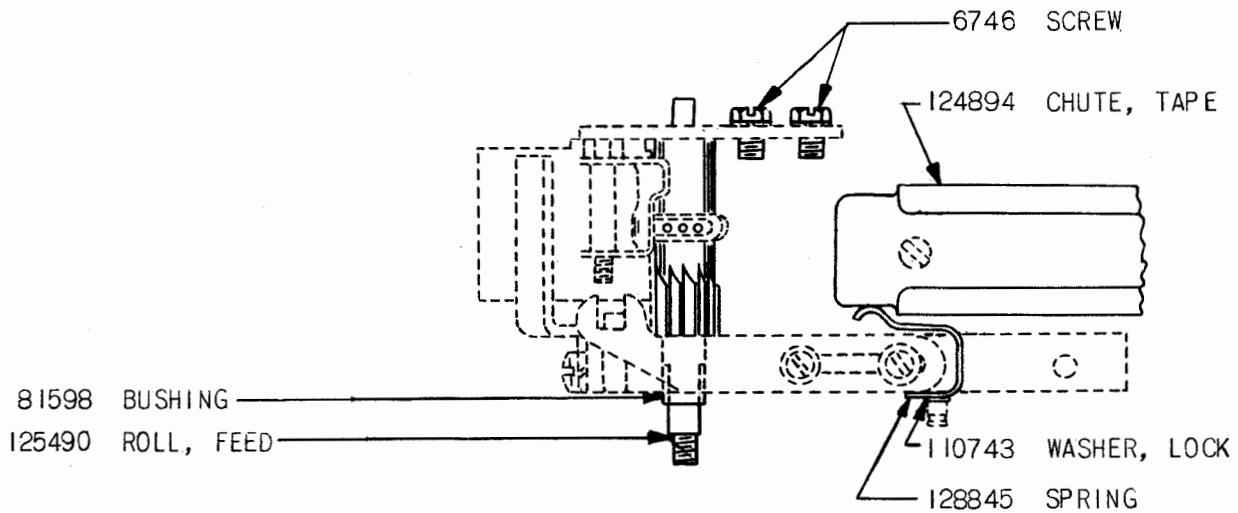


PARTS SHOWN ON THIS PAGE ARE PECULIAR TO ARPE3 (2 TAPE, 5 UNIT VEE NOTCH PUNCH). ALL OTHER PARTS ARE IDENTICAL TO THOSE USED ON ARPE1.

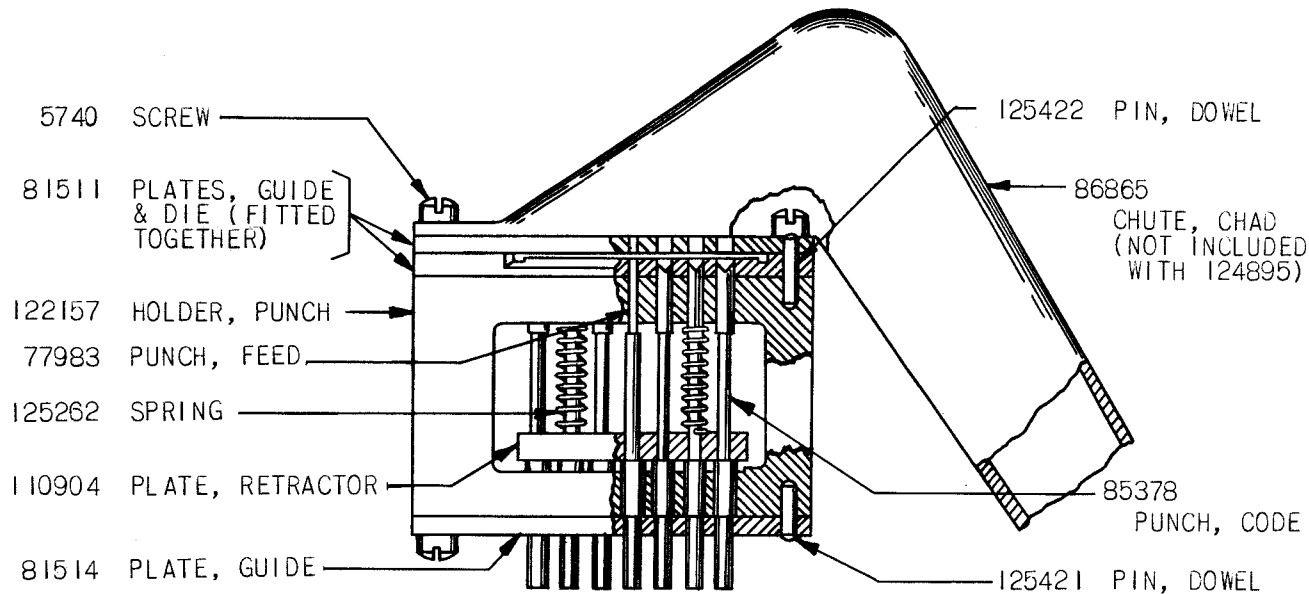
(A) SEE PAGE C, NOTE 1 FOR EXPLANATION.



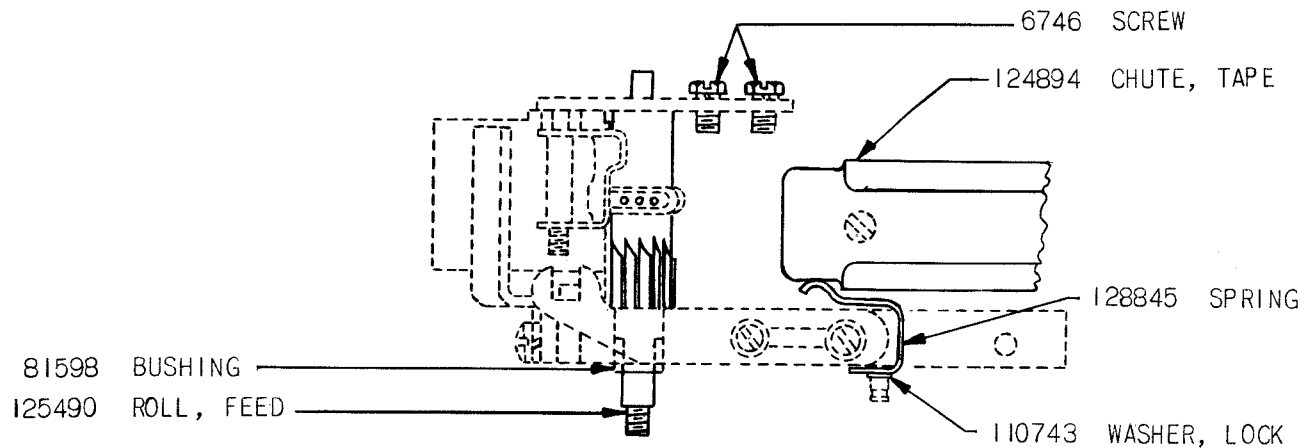
123643 BLOCK ASSEMBLY, PUNCH - ARP E5



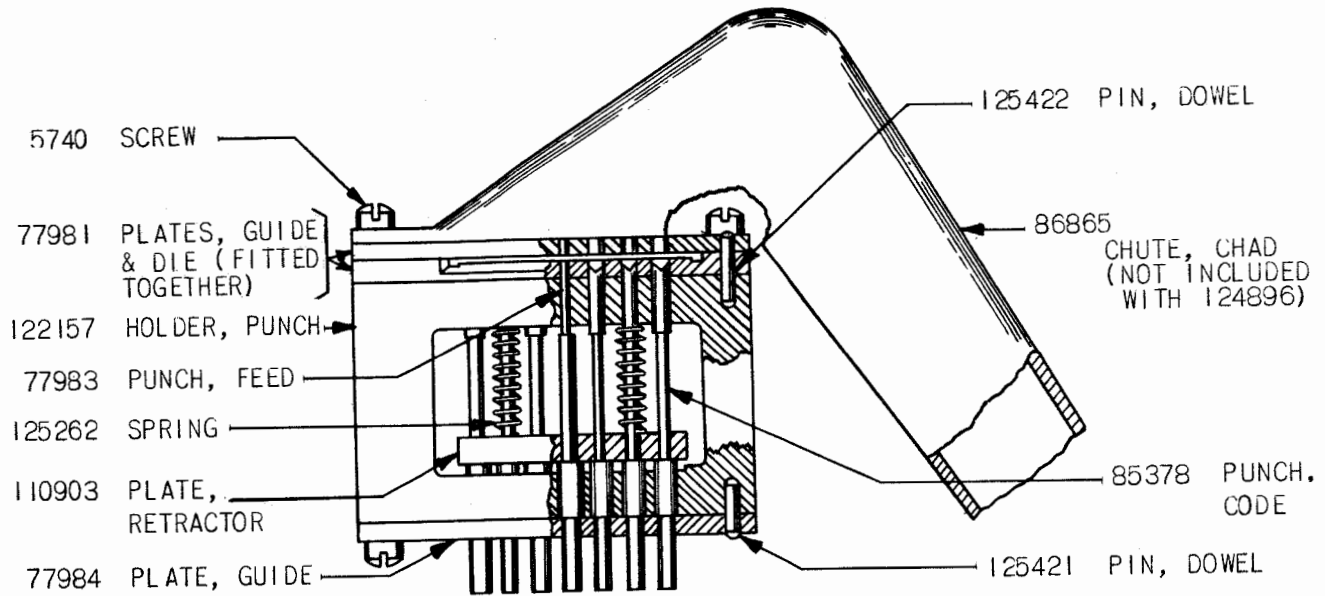
PARTS SHOWN ON THIS PAGE AND PAGE 10 ARE PECULIAR TO ARP E5 (6 UNIT CODE). ALL OTHER PARTS ARE IDENTICAL TO THOSE USED ON ARP E1.



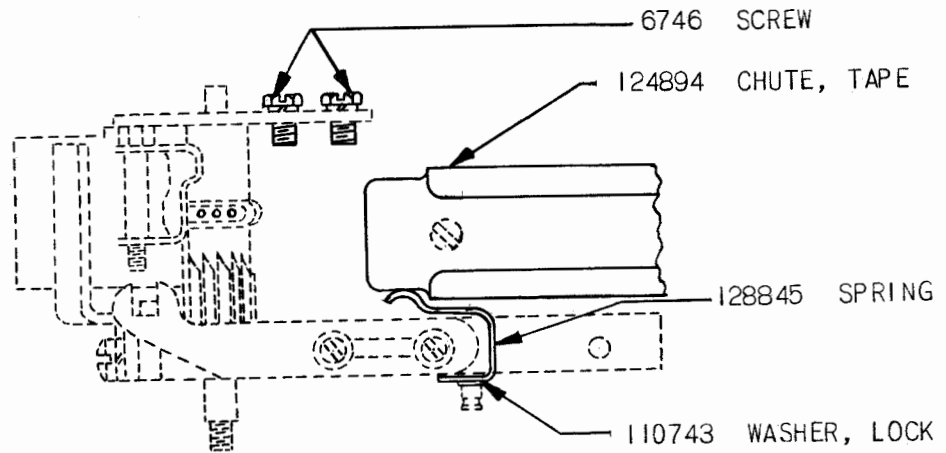
124895 BLOCK ASSEMBLY, PUNCH - ARP E6



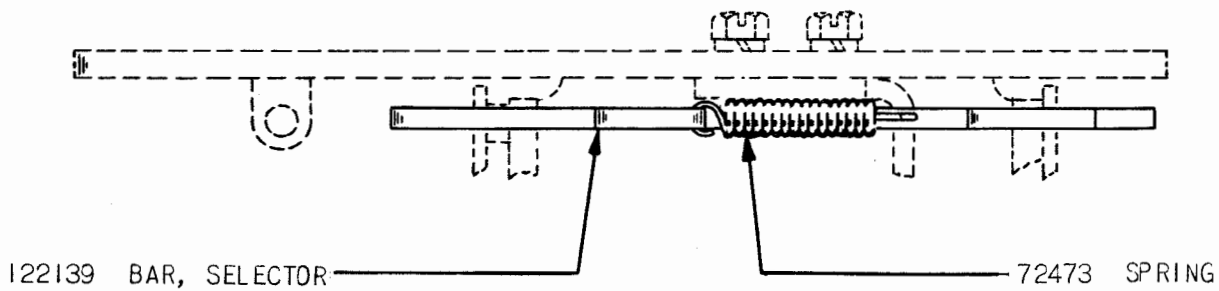
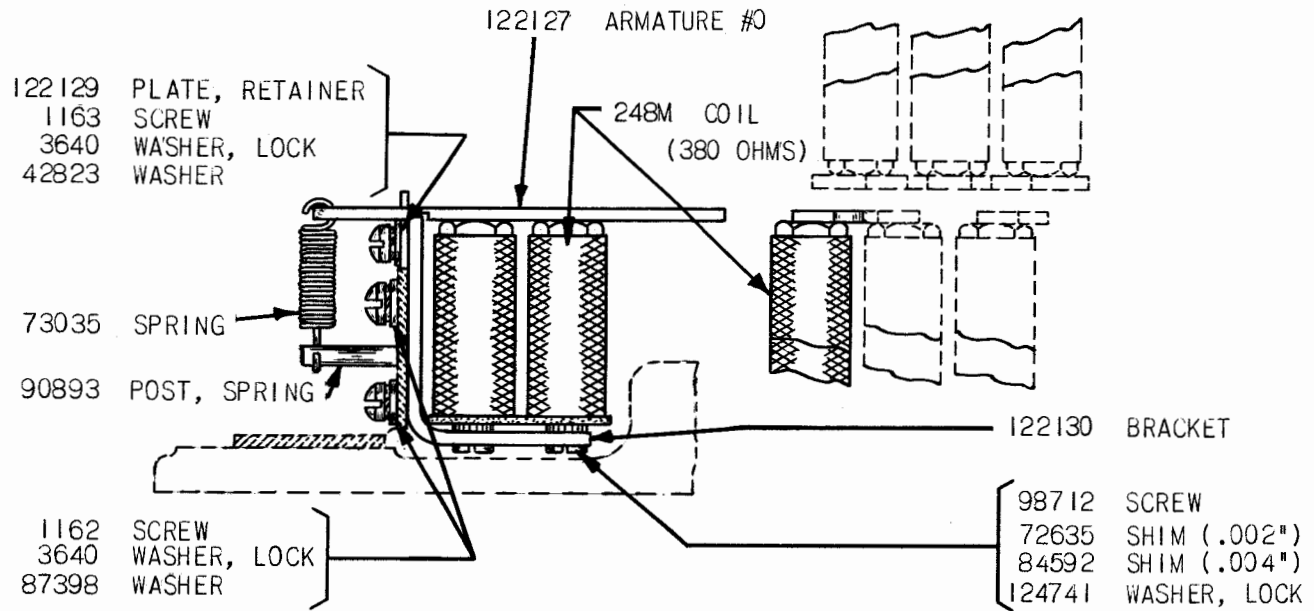
PARTS SHOWN ON THIS PAGE AND PAGE 10 ARE PECULIAR TO ARPE6 (6 UNIT CODE). ALL OTHER PARTS ARE IDENTICAL TO THOSE USED ON ARPE1.



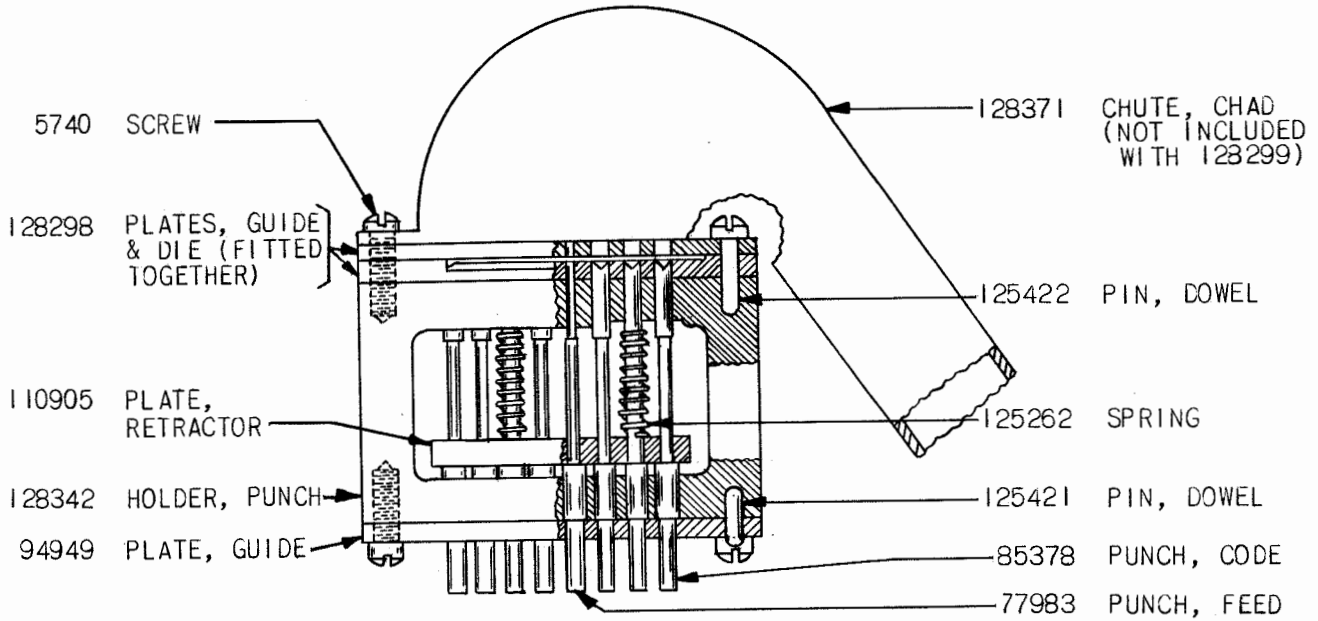
124896 BLOCK ASSEMBLY, PUNCH - ARPE7



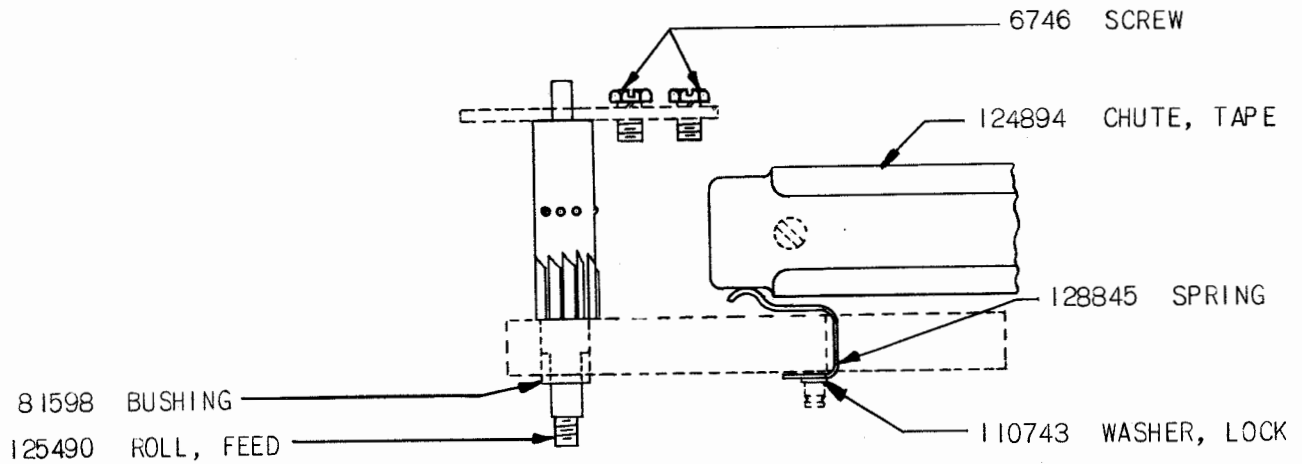
PARTS SHOWN ON THIS PAGE AND PAGE 10 ARE PECULIAR TO ARPE7 (6 UNIT CODE). ALL OTHER PARTS ARE IDENTICAL TO THOSE USED ON ARPE1.



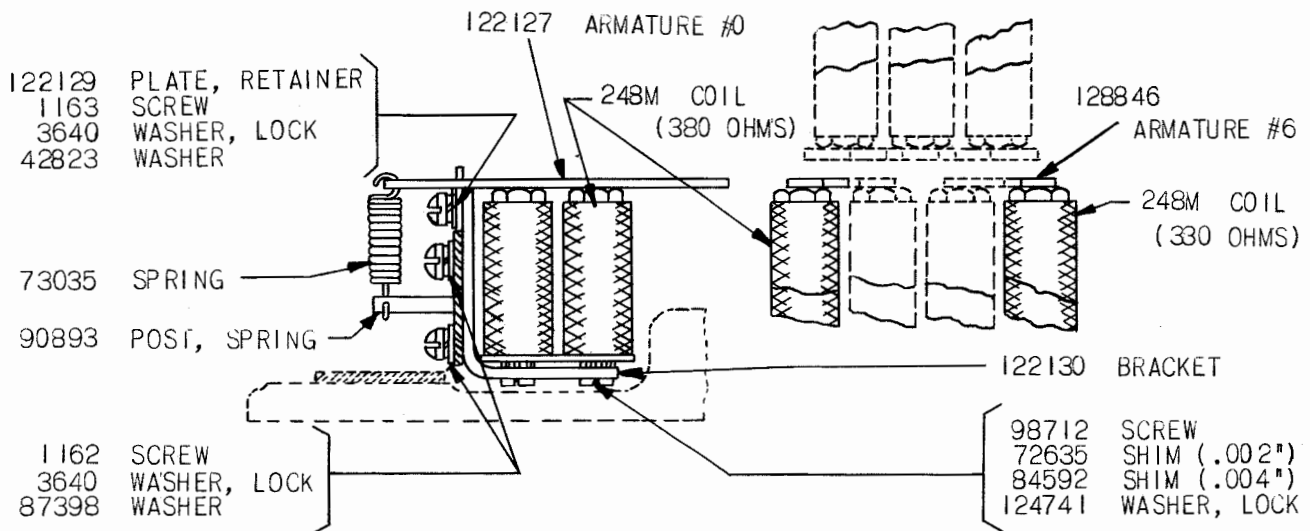
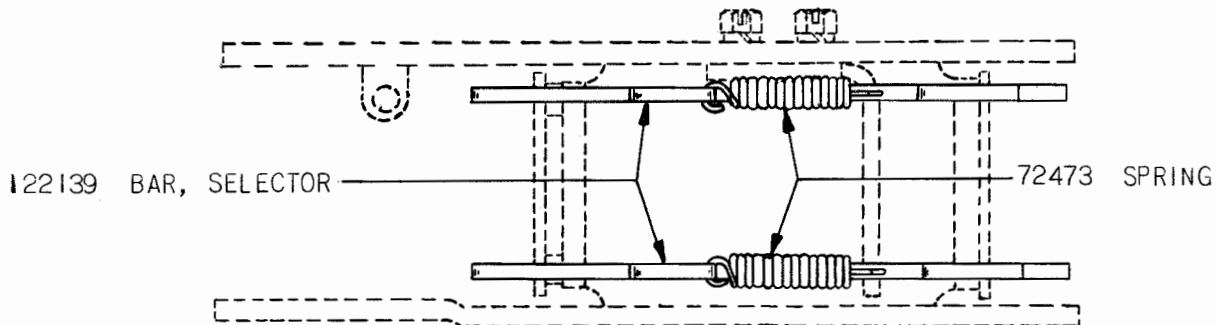
PARTS SHOWN ON THIS PAGE ARE PECULIAR TO ARPE2 & 9  
 (5 UNIT CODE) AND ARPE5, 6 & 7 (6 UNIT CODE).



128299 BLOCK ASSEMBLY, PUNCH - ARPE8

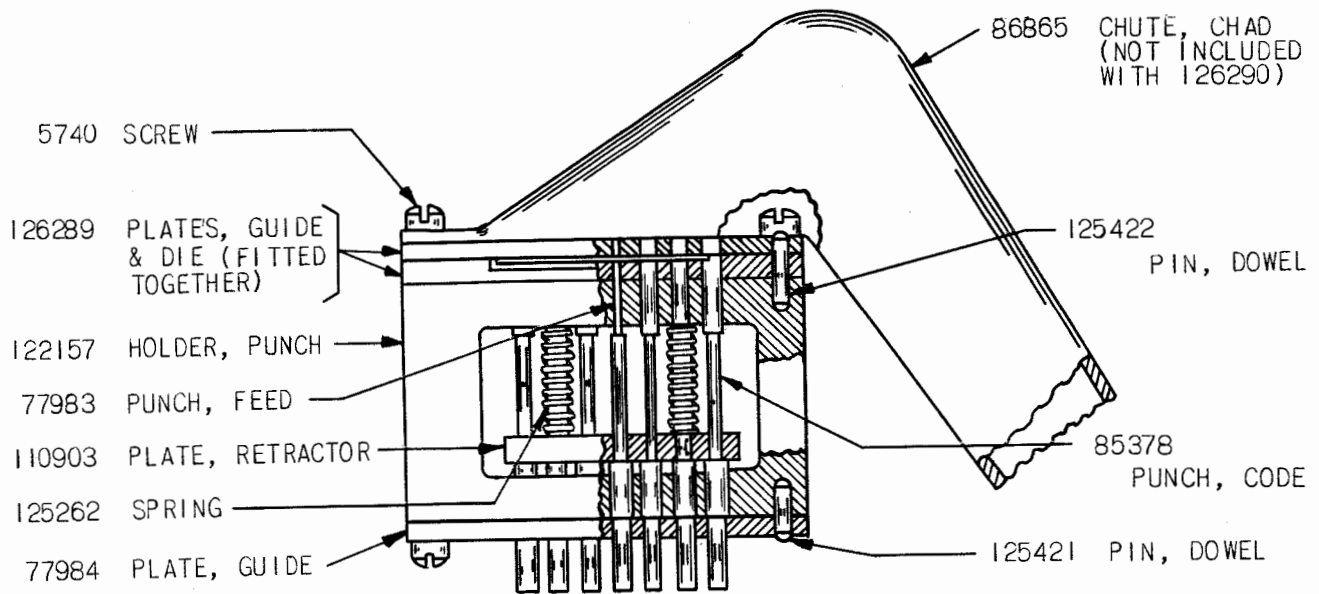


PARTS SHOWN ON THIS PAGE AND PAGE 12 ARE PECULIAR TO ARPE8 (7 UNIT CODE). ALL OTHER PARTS ARE IDENTICAL TO THOSE USED ON ARPE1.

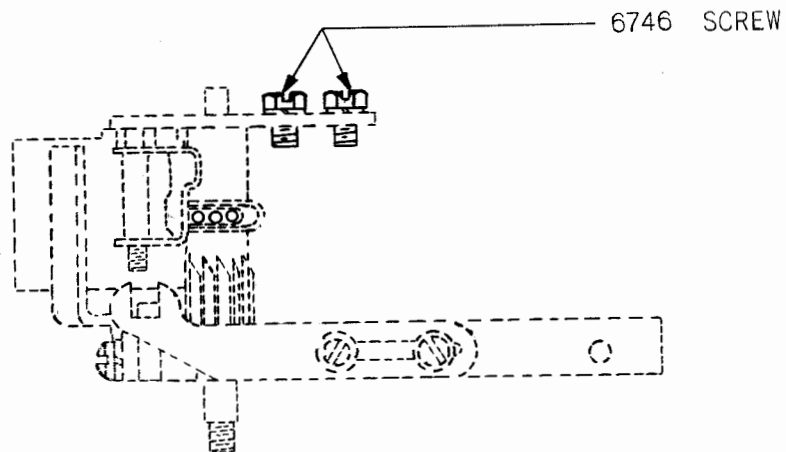


PARTS SHOWN ON THIS PAGE AND PAGE 11 ARE PECULIAR TO ARPEB (7 UNIT CODE). ALL OTHER PARTS ARE IDENTICAL TO THOSE USED ON ARPEI.





(B) 126290 BLOCK ASSEMBLY, PUNCH - ARPE9



(B) SEE PAGE C, NOTE 2 FOR EXPLANATION

PARTS SHOWN ON THIS PAGE AND PAGE 10 ARE PECULIAR TO ARPE9 (SINGLE TAPE, SIDE NOTCHING REPERFORATOR). ALL OTHER PARTS ARE IDENTICAL TO THOSE USED ON ARPE1.

Part Number	Description	Page	Part Number	Description	Page
248M	Coil (380 ohms).....	4,10,12	94949	Plate, Guide.....	11
1121	Screw (10-32 x 3/8").....	1	95440	Spacer.....	1
1160	Screw (6-40 x 5/16").....	1	95443	Screw, Pilot.....	1
1162	Screw (4-40 x 1/4").....	4,10,12	95447	Eccentric.....	2
1163	Screw (4-40 x 3/16").....	4,10,12	95449	Upstop.....	2
1164	Screw (2-56 x 3/16" Fil.).....	2	95452	Die & Guide Plates.....	3
1169	Screw (6-40 x 7/16").....	1,5	95454	Stripper, Code Punch.....	3
1176	Screw (6-40 x 3/16").....	1	95455	Stripper, Feed Punch.....	3
2191	Lockwasher.....	1,2,4,5	95456	Spring.....	3,7
2669	Lockwasher.....	1,4	95457	Retainer, Spring.....	3
3438	Washer.....	4	95458	Holder, Punch.....	3
3595	Nut (1/4-32 Hex.).....	1	95483	Post.....	1
3597	Nut (5/32-40 Hex.).....	1	95491	Spacer.....	1
3598	Nut (6-40 Hex.).....	1,2	95971	Screw (4-40 x 1/2").....	1
3599	Nut (4-40 Hex.).....	1,2	96837	Bearing.....	1
3640	Lockwasher.....	1,2,4,5,10,12	96838	Plate.....	1
4705	Spring.....	1	96845	Spacer.....	1
4814	Lockwasher.....	1	96846	Spring.....	1
5740	Screw (2-56 x 1/4").....	3,5,6,7,8,9,11,13	97995	Strip, Terminal.....	4
6746	Screw (6-40 x 5/16").....	5,7,8,9,11,13	98712	Screw (4-40 x 1/4" Fl. Hd.).....	4,10,12
6810	Screw (10-32 x 3/8").....	4	99238	Spring.....	1
7002	Washer.....	4	102052	Screw (4-40 x 9/32" Fil.).....	5
7603	Spring.....	2	102107	Knife, Tape.....	5
8330	Washer.....	1	102792	Stripper, Feed Punch.....	7
8543	Screw (6-40 x 1/4").....	1	102794	Stripper, Code Punch.....	7
42823	Washer.....	4,10,12	110730	Plate, Guide.....	6
70497	Nut (5/16 x 32).....	1	110743	Lockwasher.....	7,8,9,11
71047	Shim (.010").....	1	110901	Plate, Retractor.....	3,6
72473	Spring.....	2,10	110903	Plate, Retractor.....	5,9,13
72508	Screw (6-40 x 3/4").....	1	110904	Plate, Retractor.....	7,8
72635	Shim (.002").....	4,10,12	110905	Plate, Retractor.....	11
73035	Spring.....	4,10,12	111023	Punch Block Assembly.....	3
73482	Stud.....	1	113689	Set of Parts to Convert an ARPE2 to an ARPE3.....	C,1,2,13
74554	Post, Spring.....	1	115844	Set of Parts to Convert an ARPE2 to an ARPE9.....	C,1,2,6
76167	Screw (4-40 x 3/16").....	1,2	119651	Retainer.....	1
77981	Die and Guide Plates.....	9	121475	Punch Block Assembly.....	5
77983	Punch, Feed.....	5,6,7,8,9,11,13	121995	Lever.....	1
77984	Plate, Guide.....	5,9,13	122115	Plate.....	5
78301	Screw (10-32 x 5/8").....	1	122115	Plate.....	5
80294	Post, Spring.....	1	122116	Block.....	5
80342	Screw (6-40 x 23/64").....	1,4	122117	Roll, Feed.....	5
80444	Screw (6-40 x 1/4").....	2	122118	Lever.....	5
81511	Die & Guide Plates.....	8	122120	Armature.....	4
81514	Plate, Guide.....	7,8	122121	Armature.....	4
81598	Bushing.....	7,8,11	122123	Armature.....	4
81603	Knife, Tape.....	1	122124	Armature.....	4
81638	Collar.....	1	122127	Armature.....	10
82392	Shim (.004").....	1	122128	Armature.....	4
84023	Spring.....	1	122129	Plate, Retainer.....	4,10,12
84664	Screw (4-40 x 1-9/32" Fil.).....	4	122130	Bracket.....	4,10,12
84592	Shim (.004").....	4,10,12	122133	Bail.....	1
85378	Punch, Code.....	5,6,8,9,11,13	122134	Post.....	1
86865	Chute, Chad.....	5,6,8,9,13	122135	Bracket, Spring.....	2
86919	Plate.....	1	122136	Spacer.....	2
86920	Wheel, Star.....	1	122137	Retainer.....	2
87398	Washer.....	4,10,12	122138	Bracket.....	1
89500	Punch, Feed.....	3	122139	Bar, Selector.....	2,10,12
90893	Post, Spring.....	4,10,12			
93118	Lockwasher.....	2			

Part Number	Description	Page
122140	Bar, Selector.....	2
122141	Eccentric.....	1
122142	Bracket.....	1
122143	Chute, Tape.....	1
122144	Cable, Assembly.....	4
122145	Bracket.....	4
122146	Bail, Punch.....	2
122147	Base.....	1
122148	Spacer.....	4
122149	Screw (4-40 x 5/8").....	2
122153	Cover.....	3
122157	Holder, Punch.....	5,8,9,13
122165	Plate, Tape Stripper.....	1
122168	Pawl, Feed.....	2
122169	Clamp, Cable.....	4
122170	Screw, Pilot.....	1
122176	Die & Guide Plates.....	5
122178	Pawl, Feed.....	5
122179	Bracket.....	5
122184	Grommet.....	3
122185	Guide.....	5
122870	Die & Guide Plates.....	6
122871	Punch Block Assembly.....	6
122873	Holder, Punch.....	6
122619	Die & Guide Plates.....	7
123629	Holder, Punch.....	7
123643	Punch Block Assembly.....	7
123644	Retainer, Spring.....	7
124450	Lever.....	6
124741	Lockwasher.....	10,12,14
124894	Chute, Tape.....	7,8,9,11
124895	Punch Block Assembly.....	8
124896	Punch Block Assembly.....	9
125011	Washer.....	1,5
125112	Screw (2-56 x 1/8" Fil.).....	2
125125	Screw Shoulder.....	3
125138	Screw (2-56 x 3/8" Fil.).....	3,7
125218	Nut (1/4" x 32 Hex.).....	1
125262	Spring.....	3,5,6,7,8,9,11,13
125421	Pin, Dowel.....	3,5,6,7,8,9,11,13
125422	Pin, Dowel.....	3,5,6,7,8,9,11,13
125490	Roll, Feed.....	7,8,11
125493	Punch, Code.....	3,7
125633	Plate, Guide.....	3
125683	Eccentric.....	1
125789	Washer.....	3
126289	Plates.....	13
126290	Punch Block Assembly.....	13
128298	Plates.....	11
128299	Punch Block Assembly.....	11
128342	Holder, Punch.....	11
128371	Chute, Chad.....	11
128845	Spring.....	7,8,9,11
128846	Armature.....	12

