

BULLETIN NO. 1143B
ISSUE 3
SEPTEMBER, 1952

TELETYPE

PRINTING TELEGRAPH SYSTEMS

PARTS

SEQUENTIAL SELECTOR

BS2, BS3 AND BS6

SELECTOR PANEL

BSP2

MOTOR UNIT

MU38, MU39 AND MU41



REG. U. S. PAT. OFF.
CORPORATION

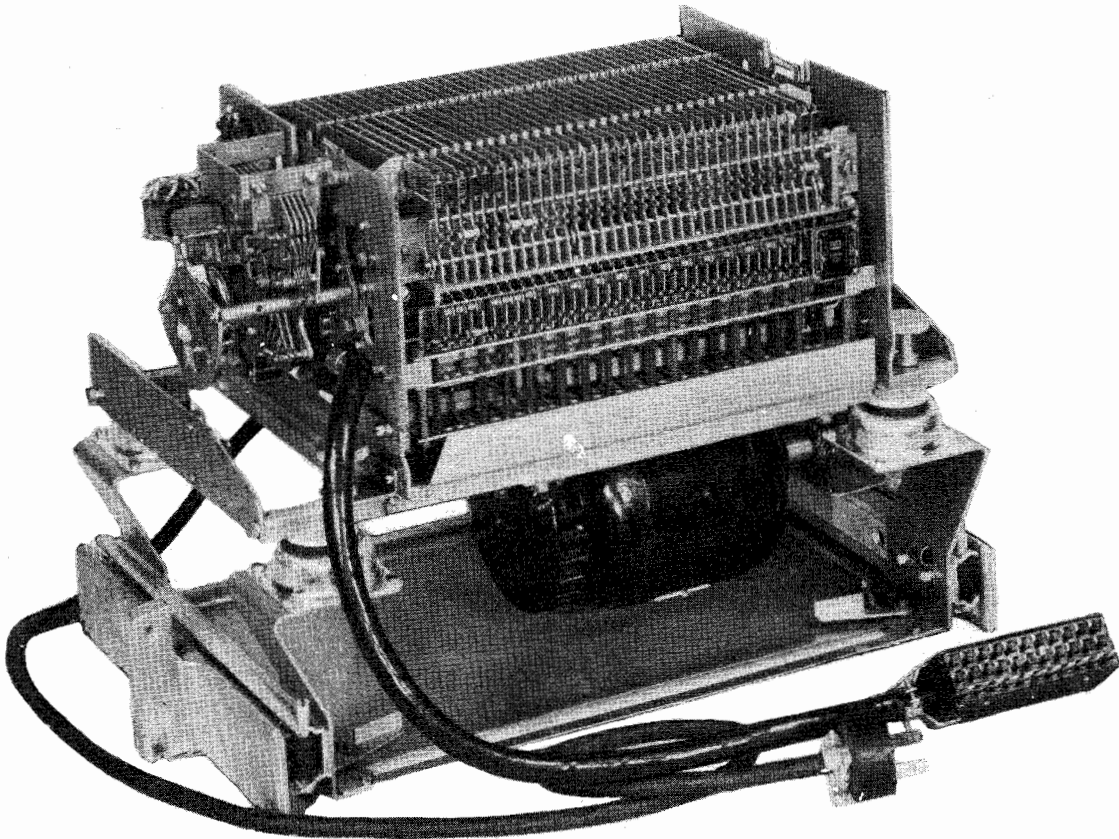
SUBSIDIARY OF

Western Electric Company

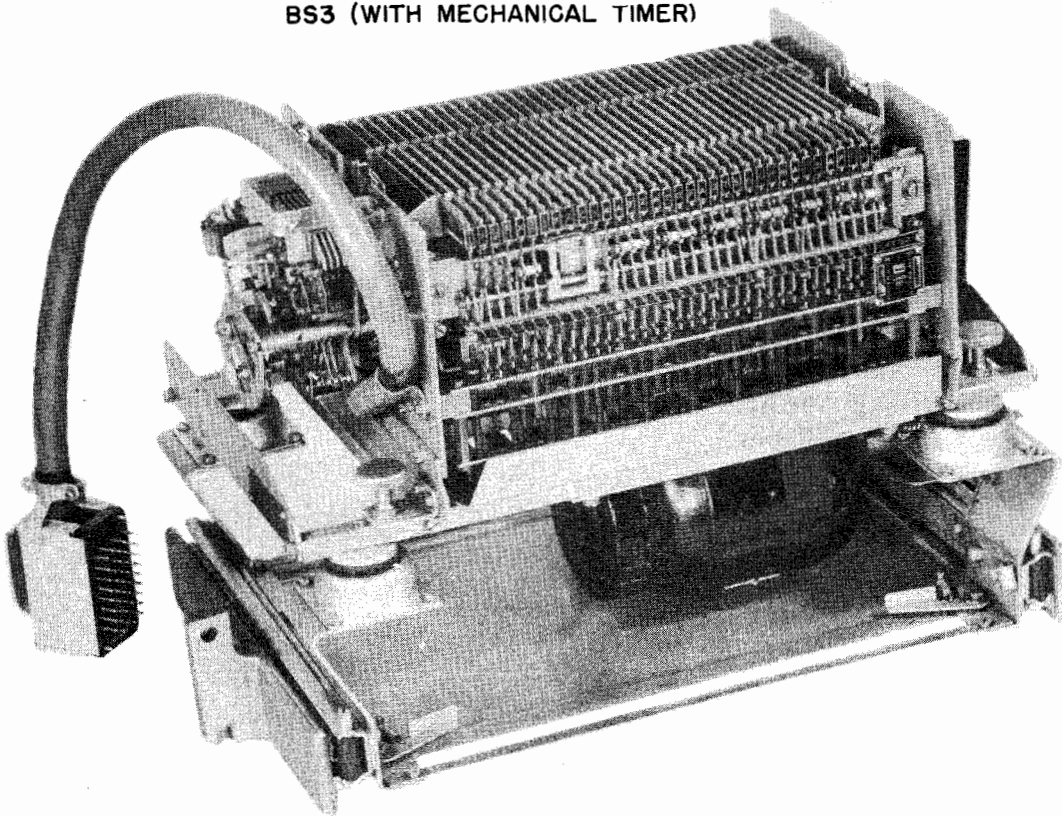
CHICAGO, U. S. A.

ATTENTION—BELL SYSTEM ONLY

WHEN ORDERING PARTS FROM THIS BULLETIN, EACH NUMBER SHOULD BE PRECEDED BY THE LETTERS TP, WITHOUT PARENTHESES, IN ORDER TO IDENTIFY THE ITEM AS ONE TO BE SECURED FROM THE TELETYPE CORPORATION.



SEQUENTIAL SELECTOR
BS2 (WITHOUT MECHANICAL TIMER)
BS3 (WITH MECHANICAL TIMER)



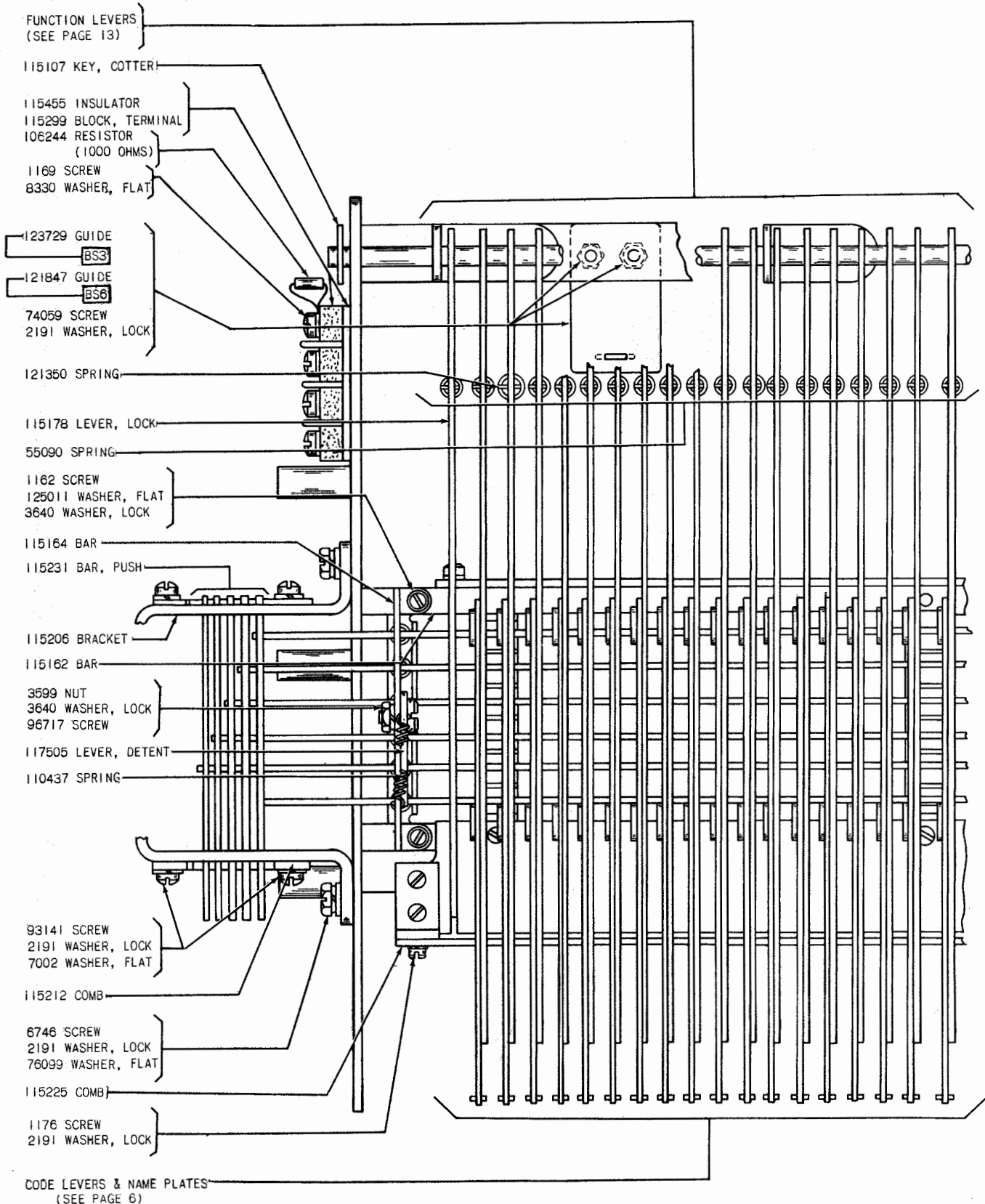
SEQUENTIAL SELECTOR
BS6 (WITH "H" ANSWER BACK MECHANISM)

ALPHABETICAL INDEX

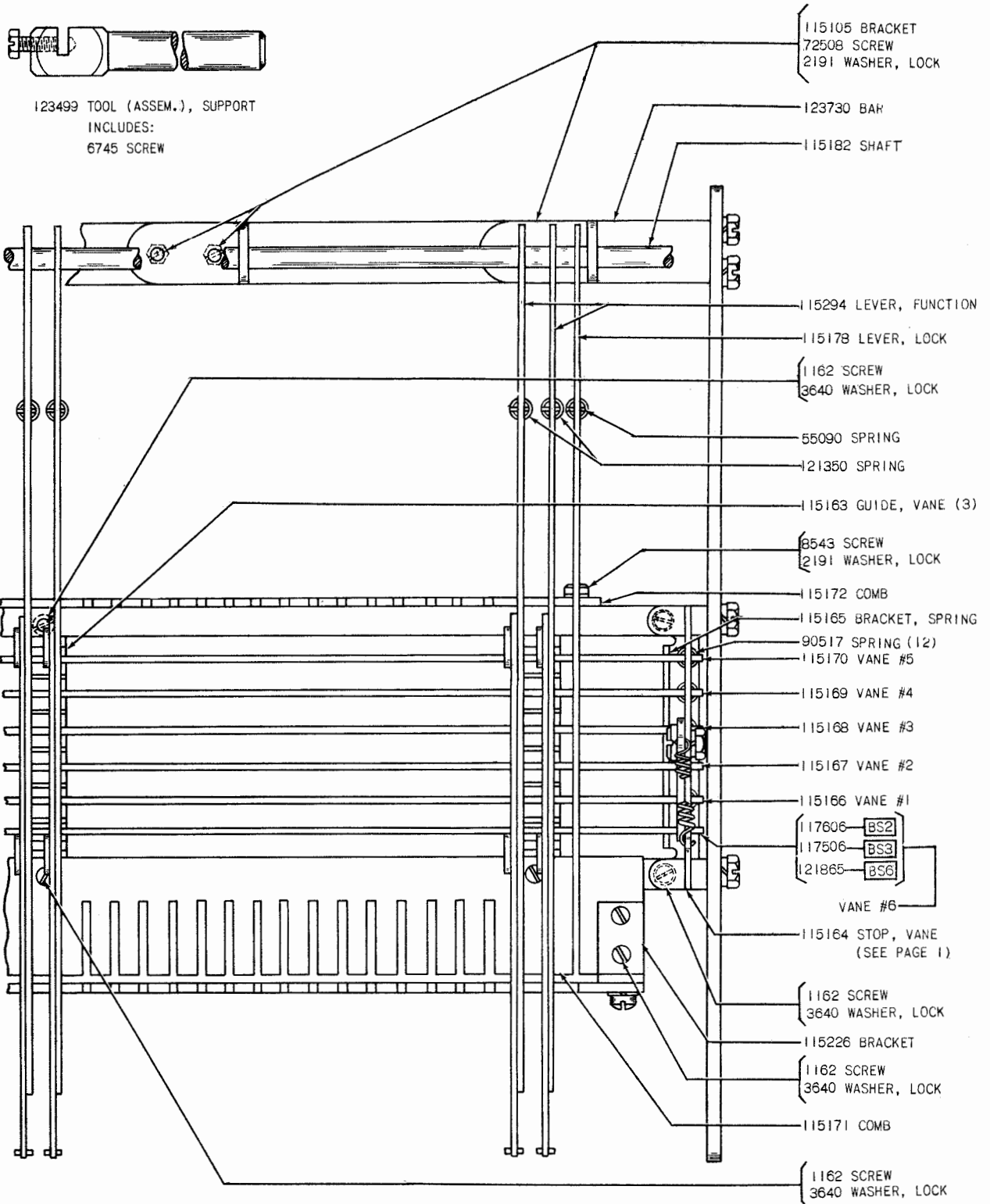
DESCRIPTION	PAGE NO.	DESCRIPTION	PAGE NO.
Blocking Levers	9,12	Main Shaft	11
Blocking Lever Wedge	9	Mechanical Timer	6,10
Cables	19	Motor Governor	18
Capacitor	17	Motor - Synchronous	17
Center Contact Governor (With Fan).	18	MU38 - Motor Unit	17
Clutch Blocking Lever Assembly . .	4	MU39 - Motor Unit	17,18
Clutch Trip Lever	4	MU41 - Motor Unit	17,18
Code Levers and Name Plate Chart .	6	Panel Counter Shaft	16
Code Levers and Name Plates	1,6	Pinion	10
Contact Assembly	10,12,14	Plugs and Cords	19
Contact Operating Levers	3,13	Pull Bars	3,13
Electrical Circuit Connectors . . .	19	Push Bars	1
Filter	18	Range Scale Assembly	8
Filter and Resistor	17,18	Resistors	1,8,17
Function Levers	1,2,6,13	R. Y. Test Mechanism	9
Fusetron - Motor	17,18	Selector Unit	8
Gears	10,11,16	Sequential Selector Panel (BSP2) .	15,16
Gear and Pinion Chart	17	Side Plates with Extensions	7
Governor Brush Assembly	18	Stripper Bail Assembly	5
"H" Answer Back Mechanism	14	Terminal Blocks	1,10,17,19
Latching Assembly	15	Vanes	2
Latching Levers	9,12	Vane Stop Assembly	1,2

NOTE:
REFERENCE TO "RIGHT" OR "LEFT" INDICATES THE SIDE OF THE MACHINE WHICH IS ON THE OBSERVER'S RIGHT OR LEFT WHEN FACING THE FRONT OF THE UNIT.

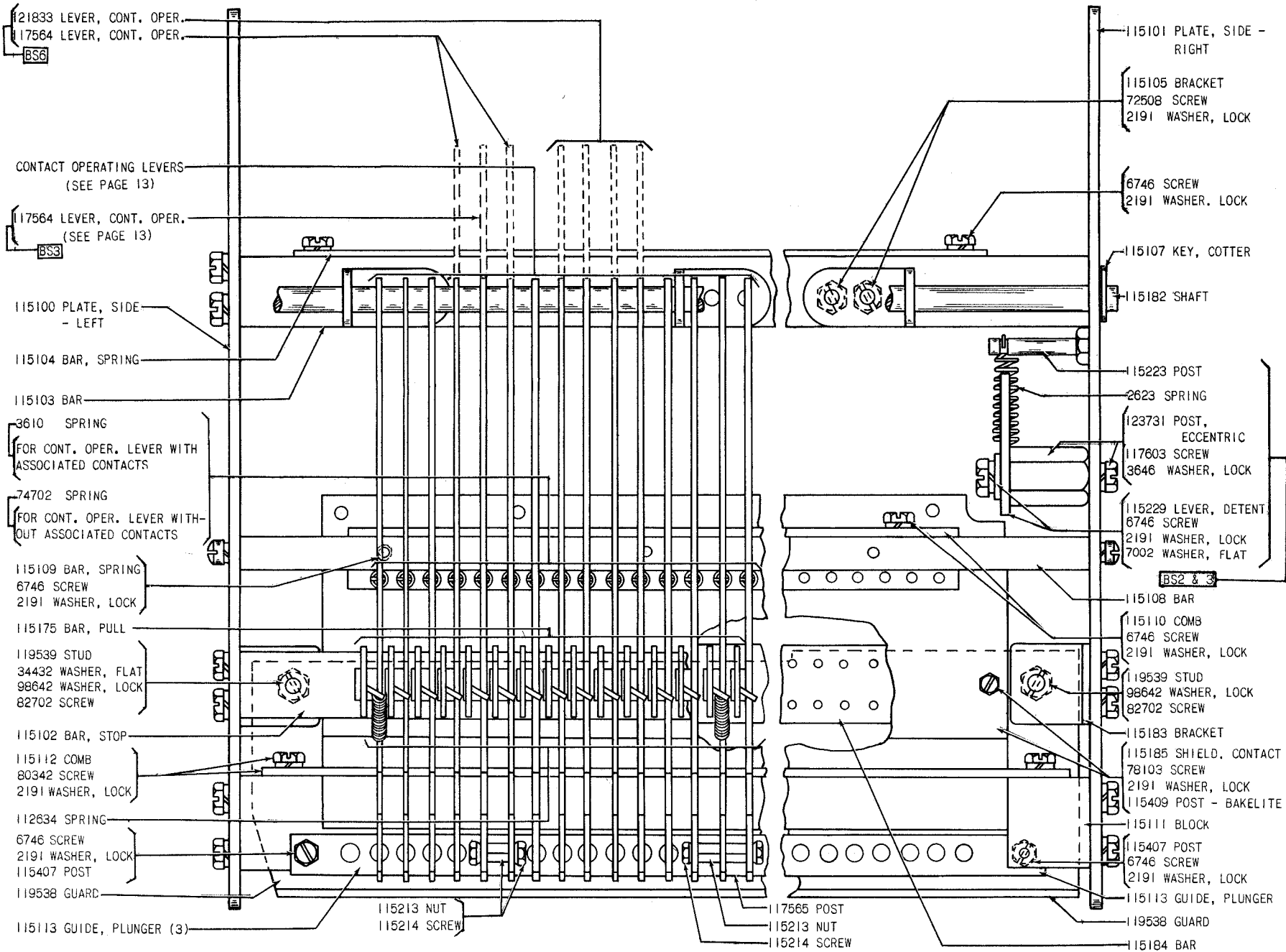
NOTE:
ALL PARTS LISTED IN THIS BULLETIN ARE COMMON TO BS2, BS3, AND BS6 UNLESS OTHERWISE SPECIFIED.



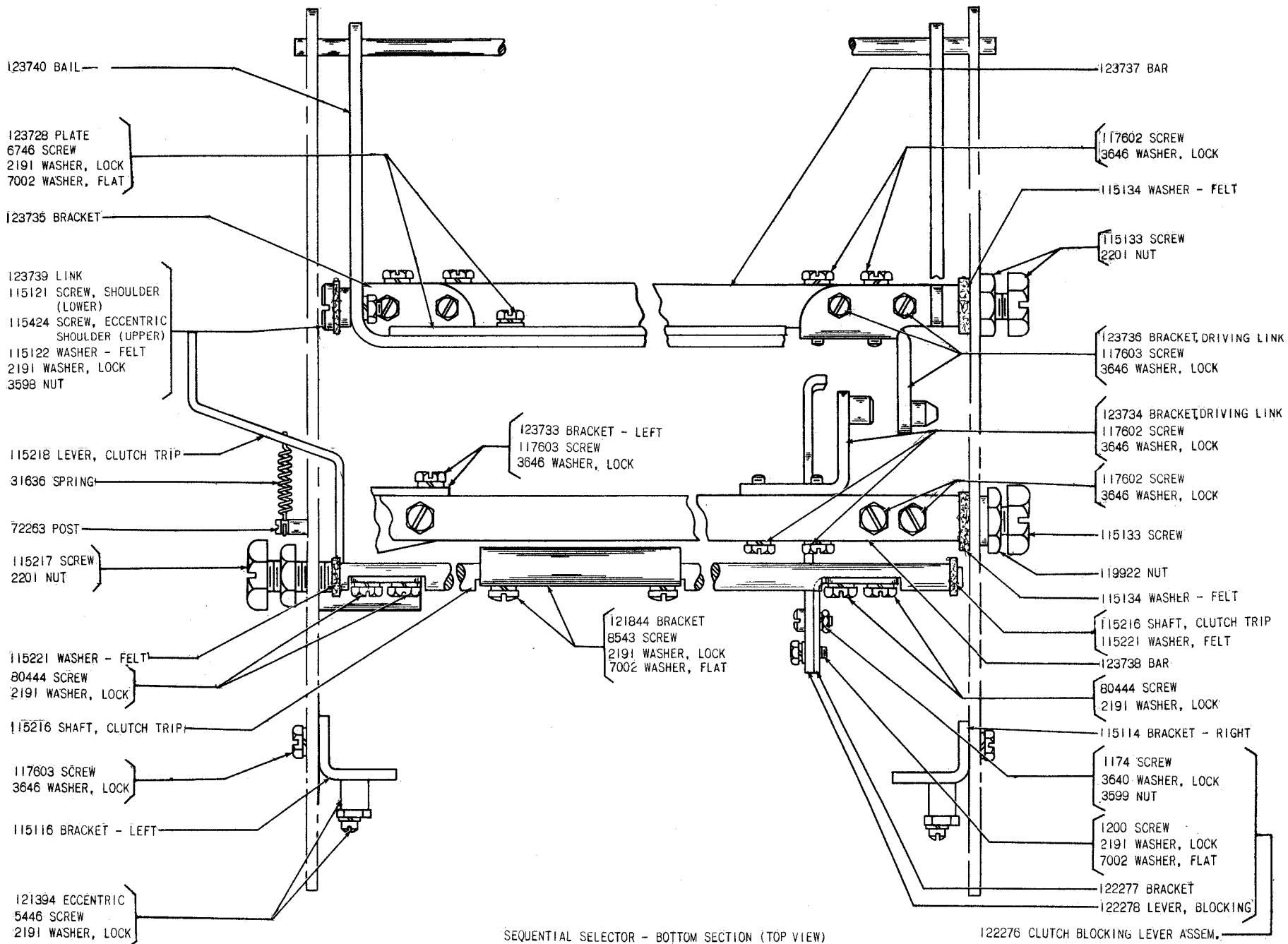
SEQUENTIAL SELECTOR - LEFT SIDE (TOP VIEW)



SEQUENTIAL SELECTOR - RIGHT SIDE (TOP VIEW)

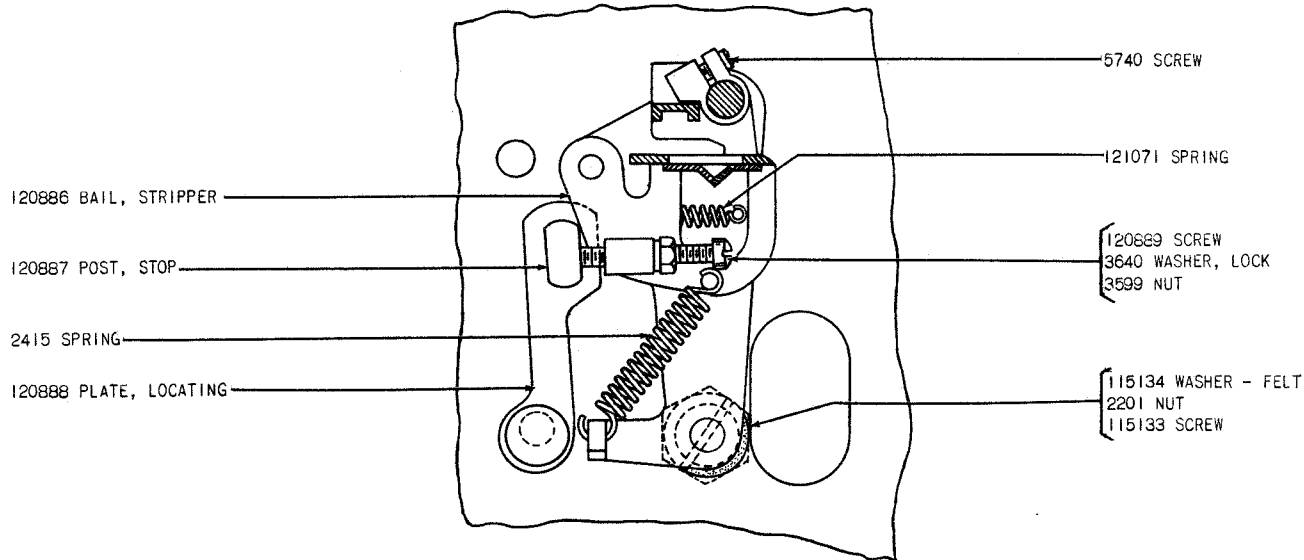
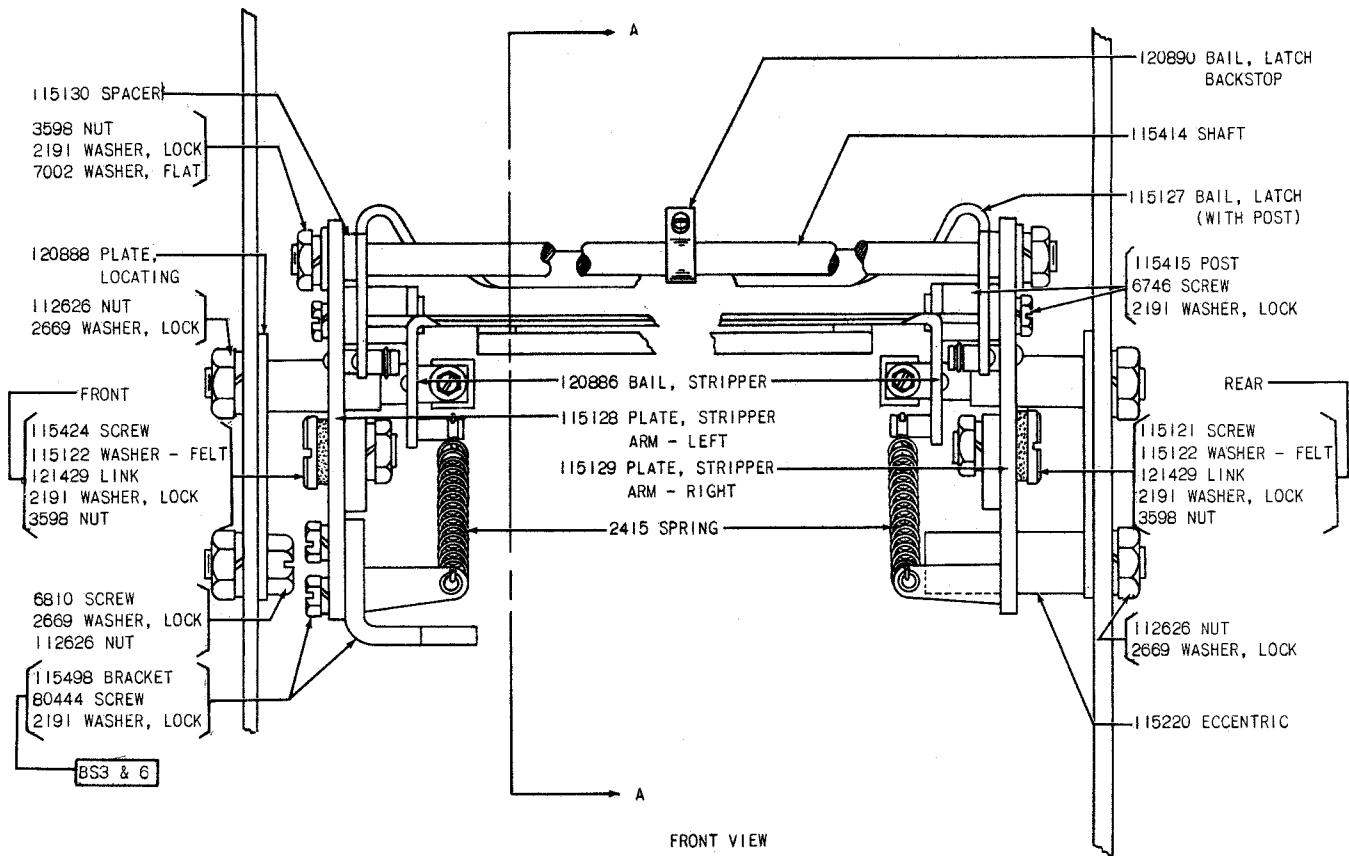


SEQUENTIAL SELECTOR - CENTER SECTION - TOP VIEW

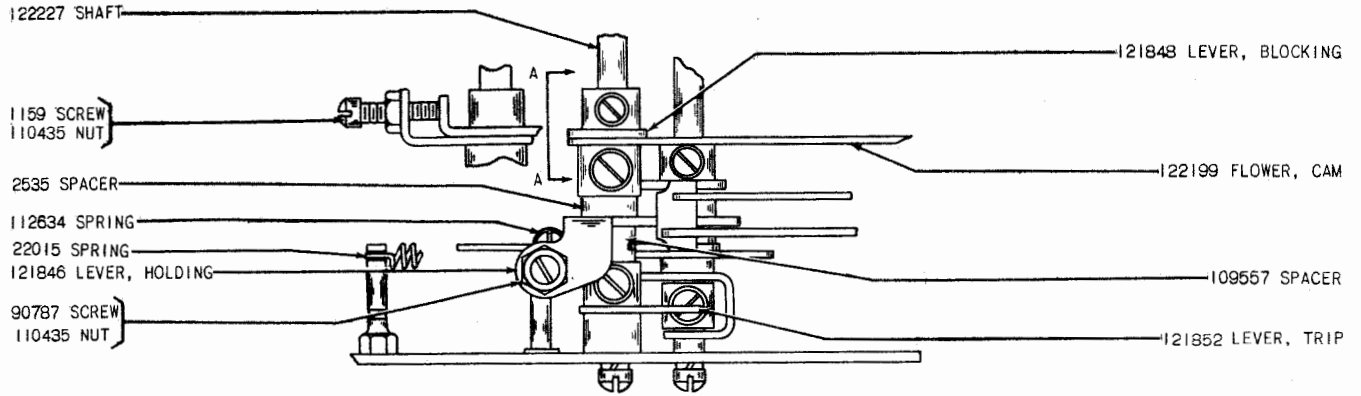


SEQUENTIAL SELECTOR - BOTTOM SECTION (TOP VIEW)

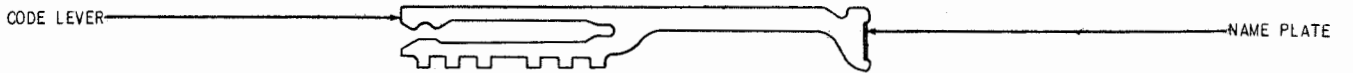
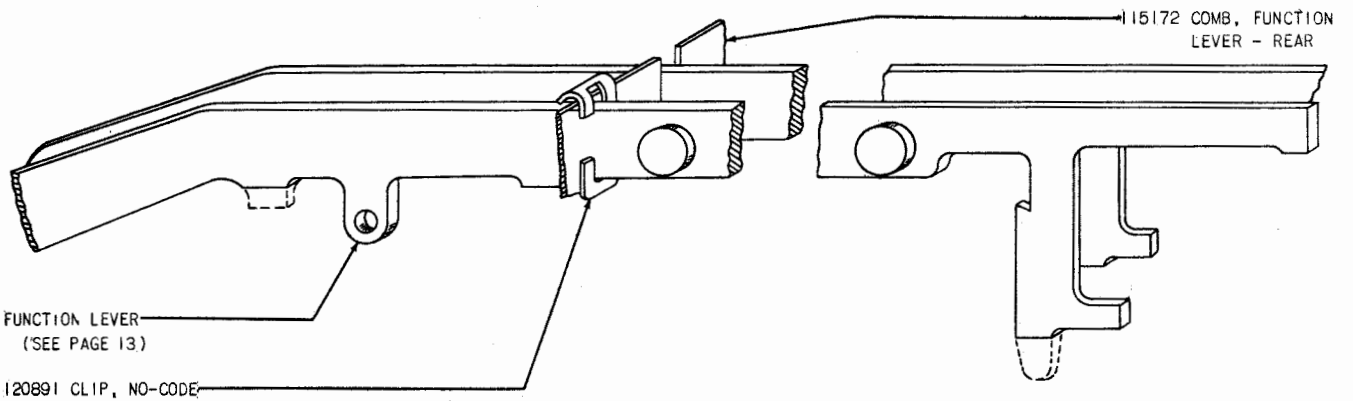
122276 CLUTCH BLOCKING LEVER ASSEM.



STRIPPER BAIL ASSEMBLY

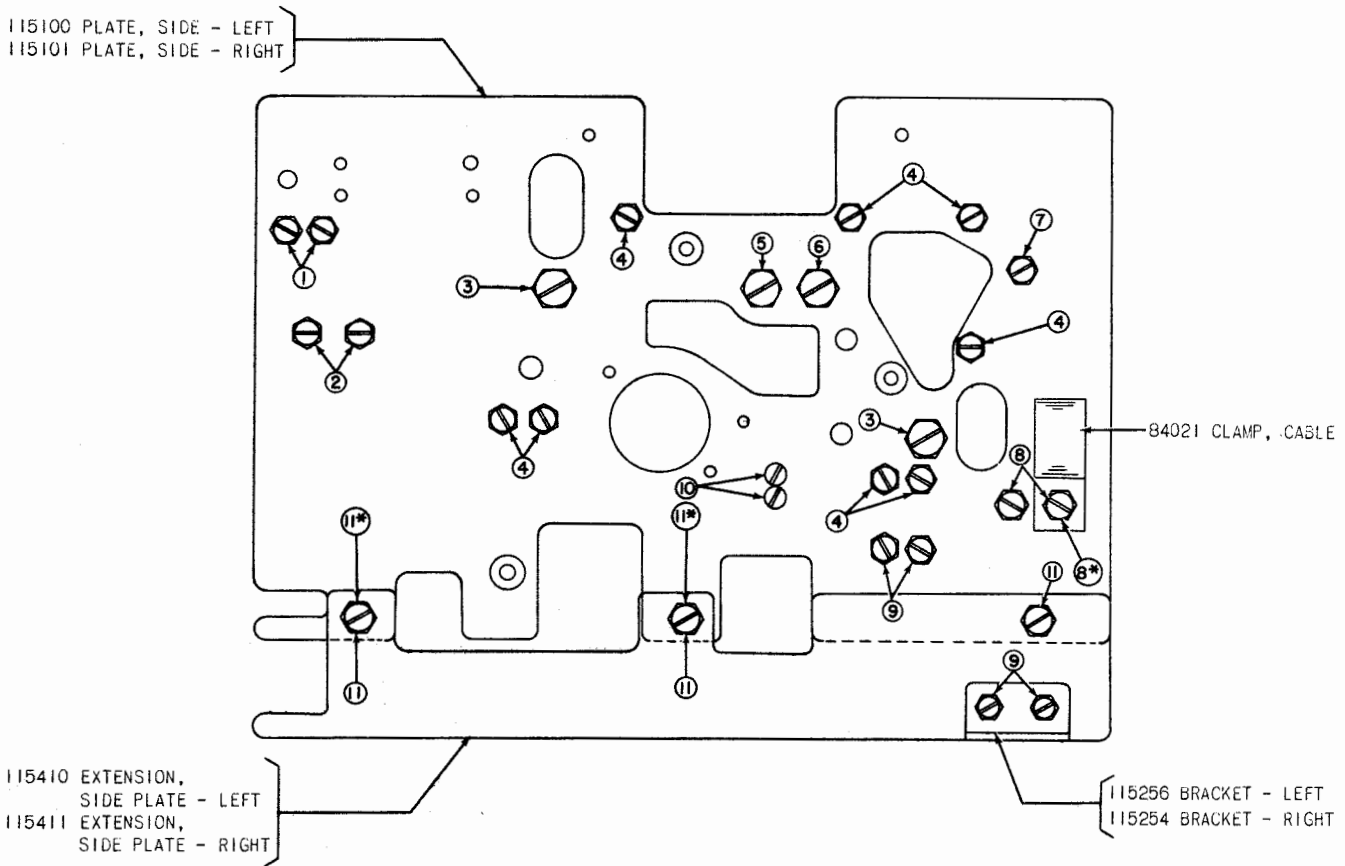


122050 MECHANICAL TIMER ASSEMBLY B56
(SEE PAGE 10 FOR ADDITIONAL PARTS)



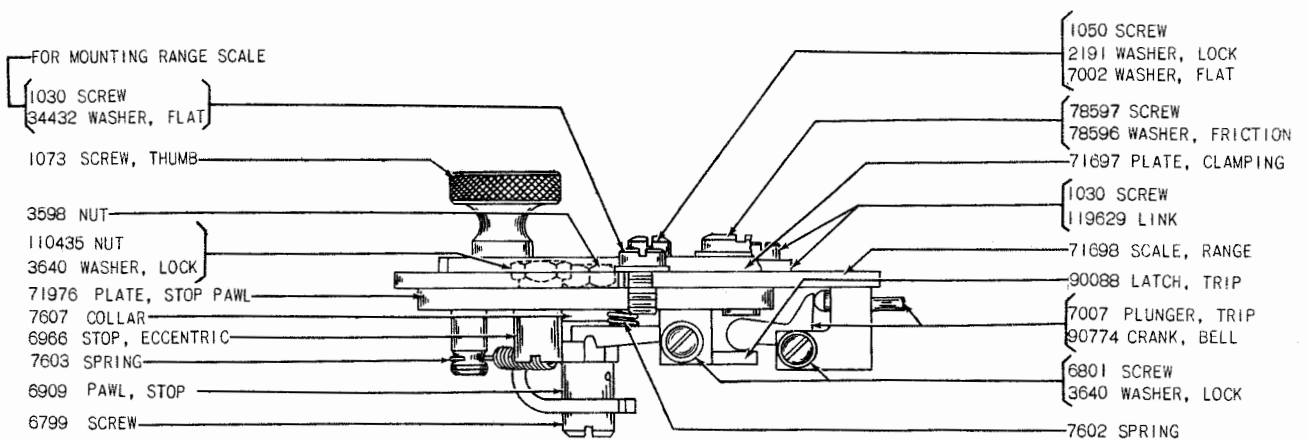
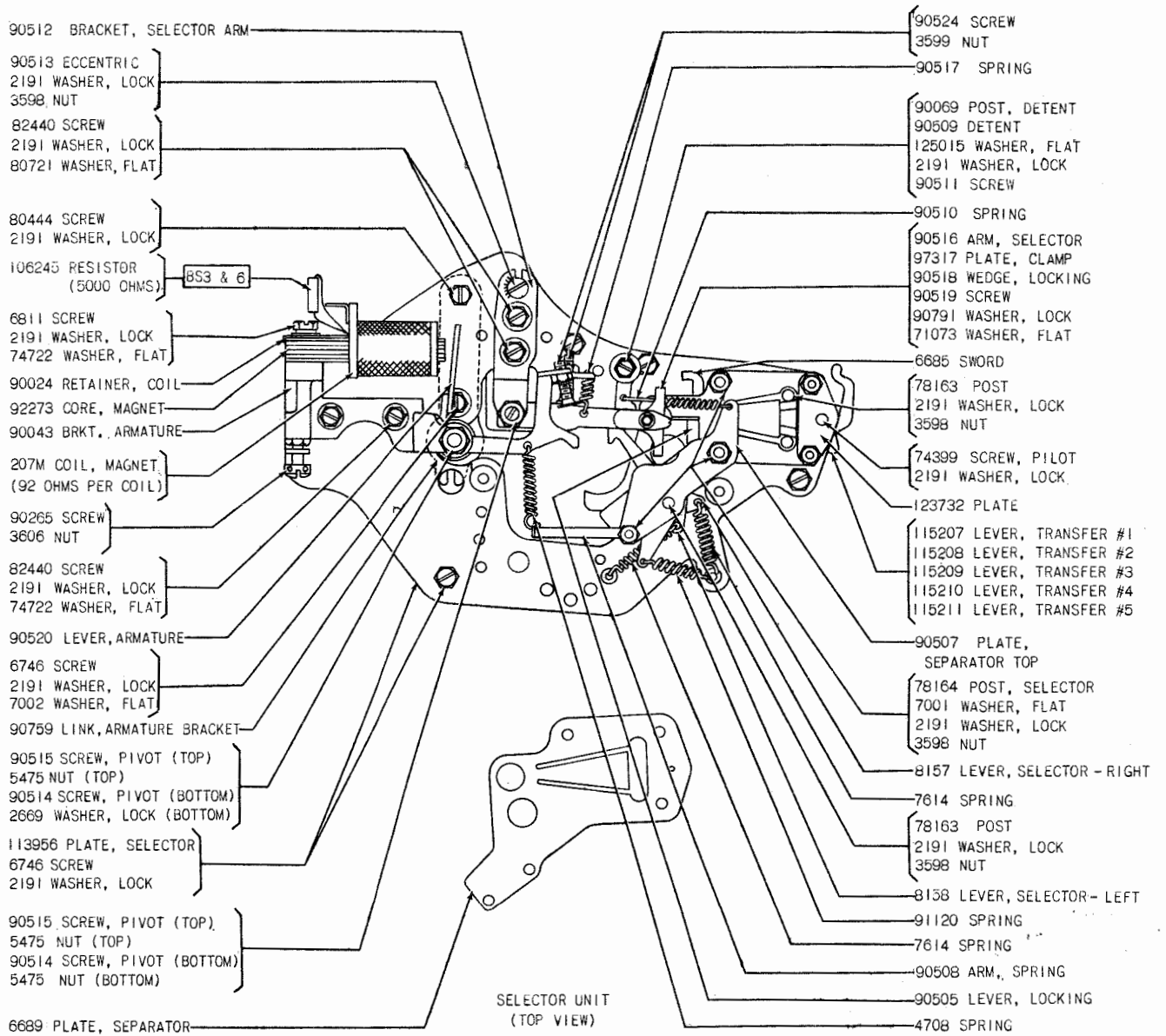
SUPPLIED ON ORDERS

CODE LEVERS & NAME PLATES TO BE SUPPLIED ON ORDERS											
CHARACTER	A	B	C	D	E	F	G	H	I	J	K
CODE LEVER (WITH NAME PLATE)	117450	117451	117452	117453	117454	117455	117456	117457	117458	117459	117460
NAME PLATE NUMBER	115066	115067	115068	115069	115070	115071	115072	115073	115074	115075	115076
CHARACTER	L	M	N	O	P	Q	R	S	T	U	V
CODE LEVER (WITH NAME PLATE)	117461	117462	117463	117464	117465	117466	117467	117468	117469	117470	117471
NAME PLATE NUMBER	115077	115078	115079	115080	115081	115082	115083	115084	115085	115086	115087
CHARACTER	W	X	Y	Z	LF	SP	CR	BL	FIG	LET	NO CODE
CODE LEVER (WITH NAME PLATE)	117472	117473	117474	117475	117476	117477	117478	117479	117480	117481	115032
NAME PLATE NUMBER	115088	115089	115090	115091	115092	115093	115094	115097	115095	115096	115098



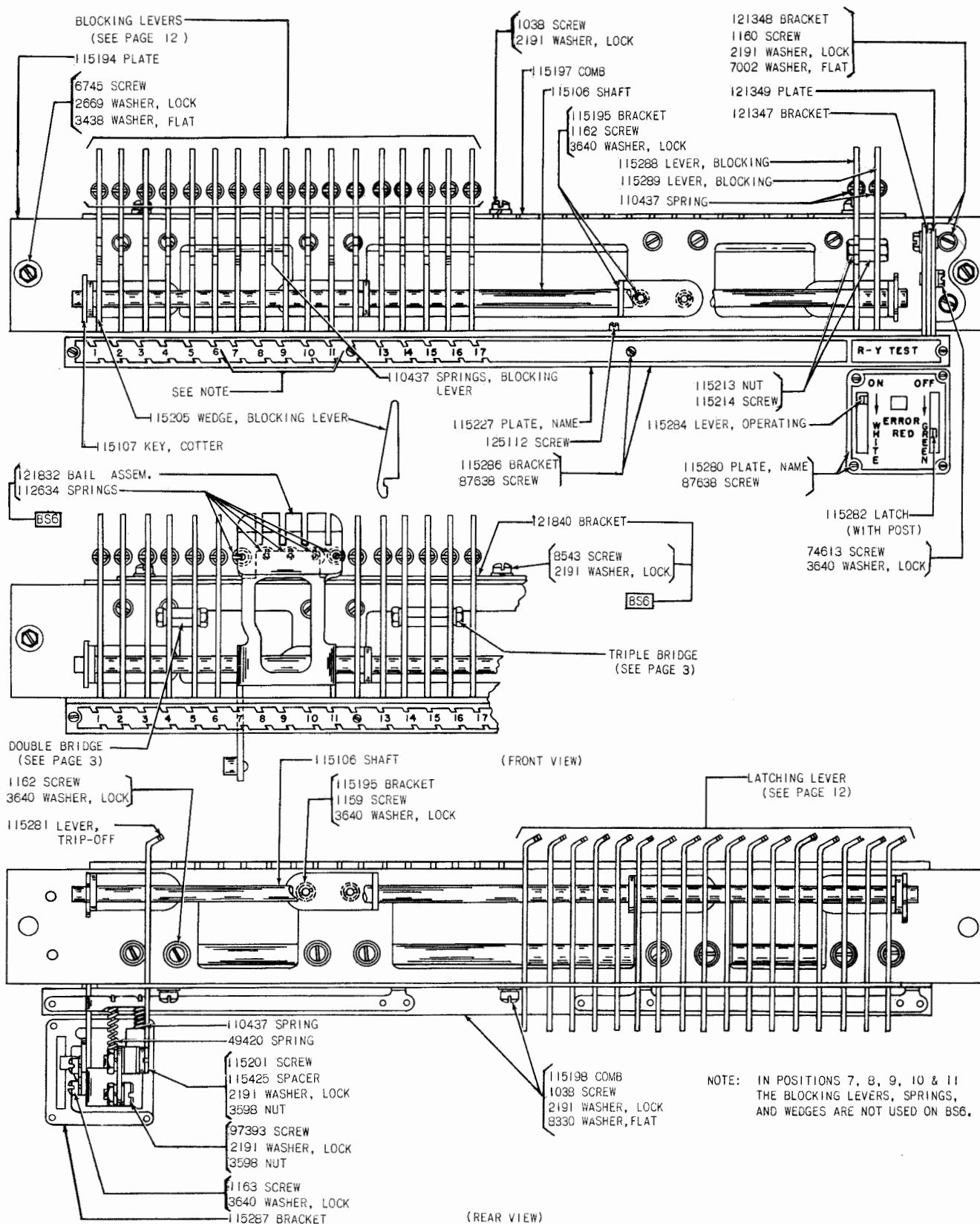
LEFT SIDE PLATE (WITH MOUNTING SCREWS)

MOUNTING SCREWS USED ON LEFT & RIGHT SIDE PLATES							
REFERENCE NO.	PART NUMBER	USED ON		REFERENCE NO.	PART NUMBER	USED ON	
		LEFT SIDE	RIGHT SIDE			LEFT SIDE	RIGHT SIDE
①	82440 SCREW	X	X	⑧	80342 SCREW	X	-
	2191 WASHER, LOCK	X	X		2191 WASHER, LOCK	X	-
②	74059 SCREW	X	X	⑧*	80342 SCREW	X	X
	2191 WASHER, LOCK	X	X		2191 WASHER, LOCK	X	X
③	115133 SCREW	X	X	⑨	3438 WASHER, FLAT	X	-
	2201 NUT	X	X		80444 SCREW	X	-
④	117603 SCREW	X	X	⑩	2191 WASHER, LOCK	X	-
	3646 WASHER, LOCK	X	X		1160 SCREW	X	X
⑤	115133 SCREW	X	X	⑪	2191 WASHER, LOCK	X	X
	119922 NUT	X	X		6810 SCREW	X	X
⑥	115217 SCREW	X	X	BS6 ONLY	2669 WASHER, LOCK	X	X
	2201 NUT	X	X		74014 SCREW	-	X
⑦	74986 SCREW	X	X	⑪*	2669 WASHER, LOCK	-	X
	3598 NUT	X	X		112626 NUT	-	X
						7150 SPACER	-



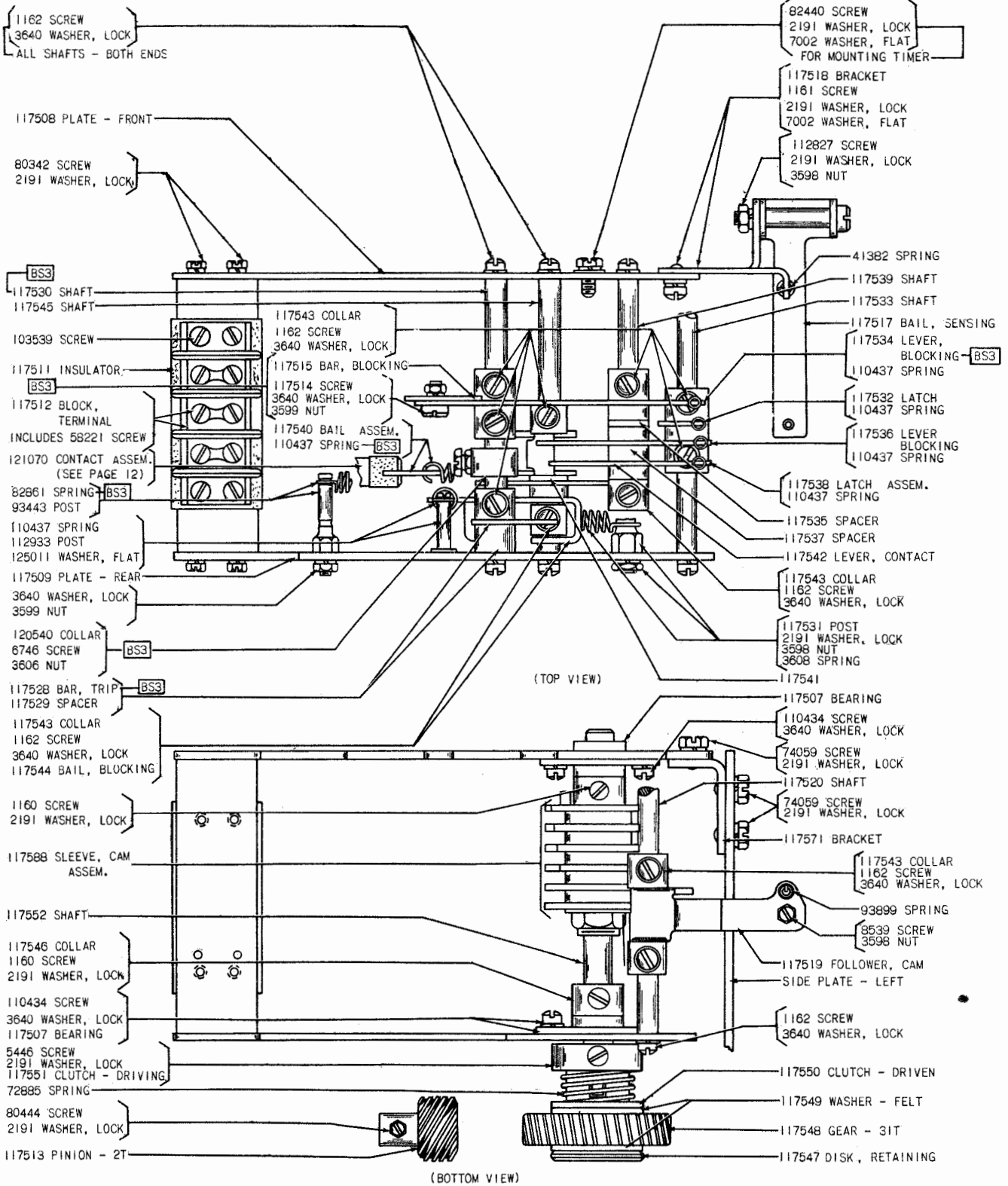
115475 CABLE (SELECTOR UNIT)

RANGE SCALE ASSEMBLY



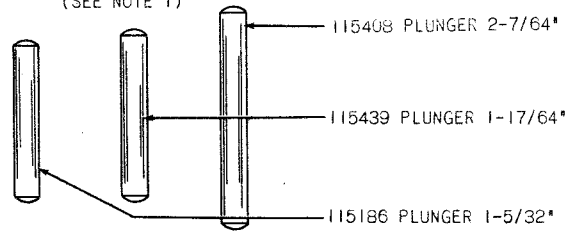
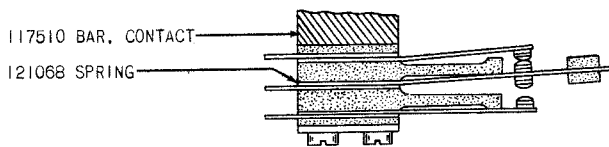
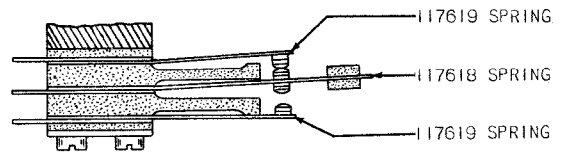
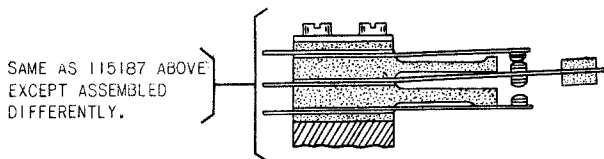
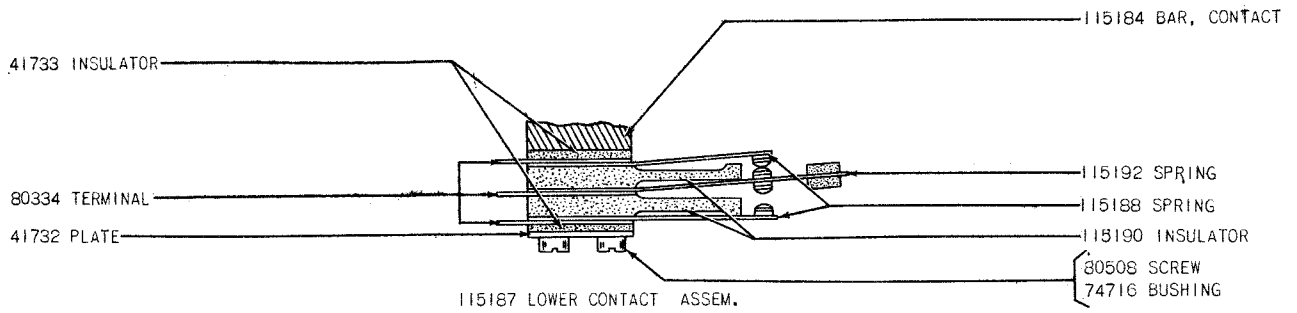
NOTE: IN POSITIONS 7, 8, 9, 10 & 11
THE BLOCKING LEVERS, SPRINGS,
AND WEDGES ARE NOT USED ON B56.

BLOCKING AND LATCHING LEVER ASSEMBLY



117578 MECHANICAL TIMER ASSEMBLY BS3
 122050 MECHANICAL TIMER ASSEMBLY BS6
 SEE PAGE 6 FOR ADDITIONAL PARTS

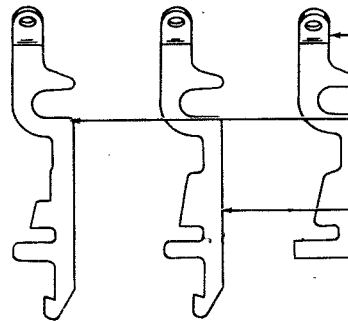
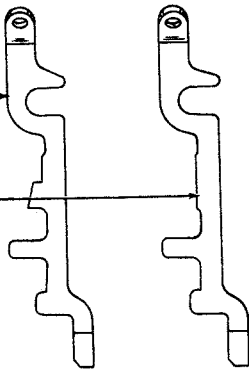
ALL PARTS LISTED ON THIS PAGE ARE COMMON TO BS3 AND BS6, UNLESS OTHERWISE SPECIFIED.



NOTE 1: PARTS NOT LISTED
SAME AS 115187

115295 LEVER, LATCHING

121101 LEVER, LATCHING



17576 LEVER, LATCHING

115297 LEVER, LATCHING

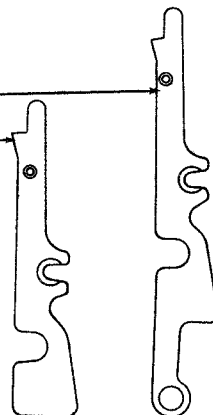
115296 LEVER, LATCHING

115293 LEVER, BLOCKING

115288 LEVER, BLOCKING

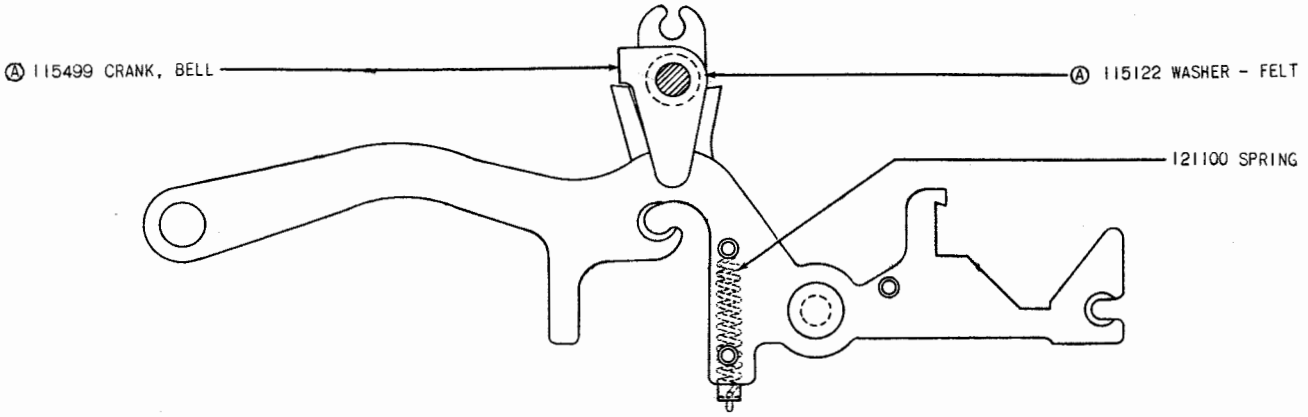
NOTE: 2

INFORMATION REGARDING APPLICATION AND LOCATION OF VARIABLE FEATURES SUCH AS FUNCTION LEVERS, FUNCTION LEVER SPRINGS, PULL BAR LEVERS, BLOCKING LEVERS, BLOCKING LEVER WEDGES, OPERATING LEVERS, OPERATING LEVER SPRINGS, CONTACT PLUNGERS, CONTACT ASSEM., BRIDGES, MOTOR ARRANGEMENTS, CABLES AND CABLE CLAMPS IS SHOWN ON WIRING DIAGRAM 2544WD AND LEVER ARRANGEMENT CHART PROVIDED WITH EACH SEQUENTIAL SELECTOR (2545WD).

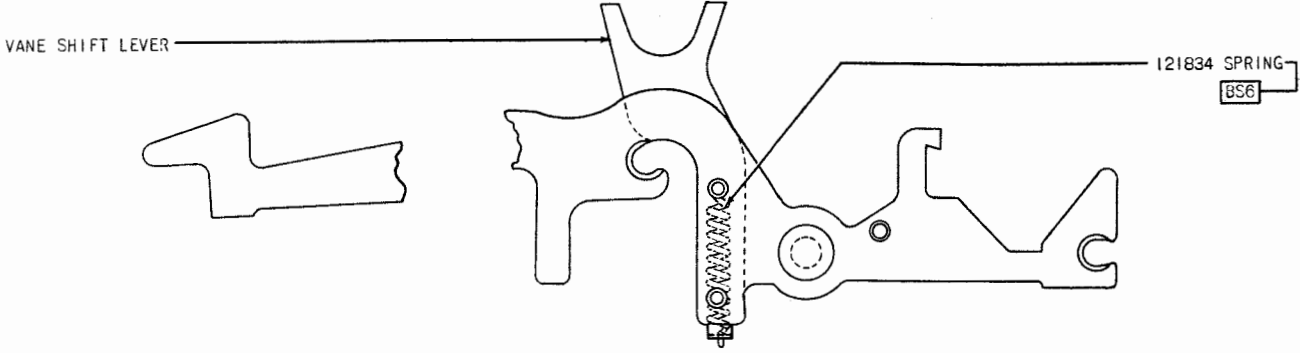


115289 LEVER, BLOCKING

BLOCKING AND LATCHING LEVERS

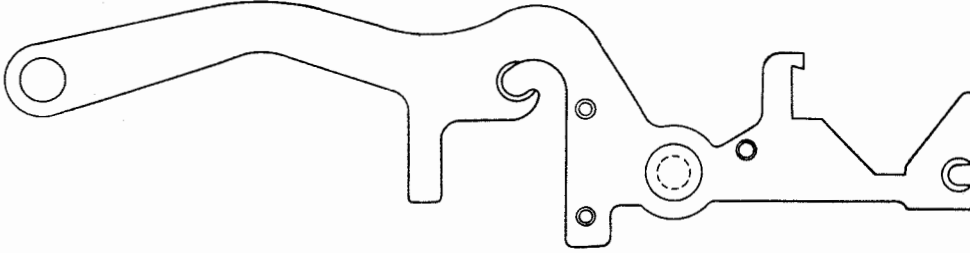


117579 LEVER, CONTACT OPERATING
(EXCLUDES PARTS MARKED (A))



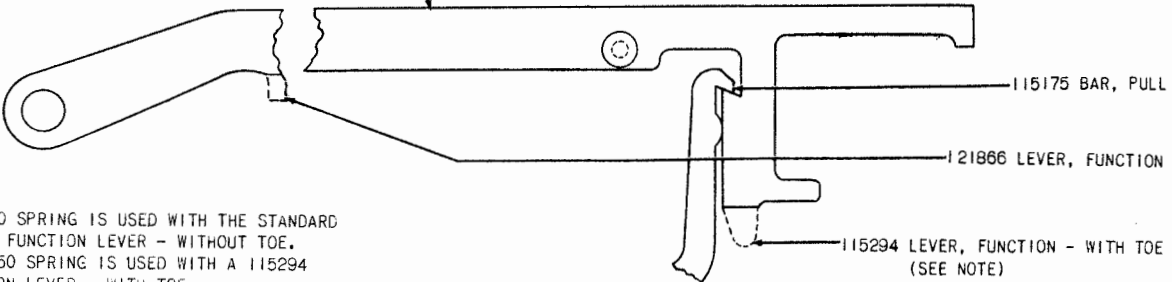
117564 LEVER, CONTACT OPERATING B53 & 6
(EXCLUDES VANE SHIFT LEVER AND SPRING)

121833 LEVER, CONTACT OPERATING B56
(INCLUDES VANE SHIFT LEVER AND SPRING)



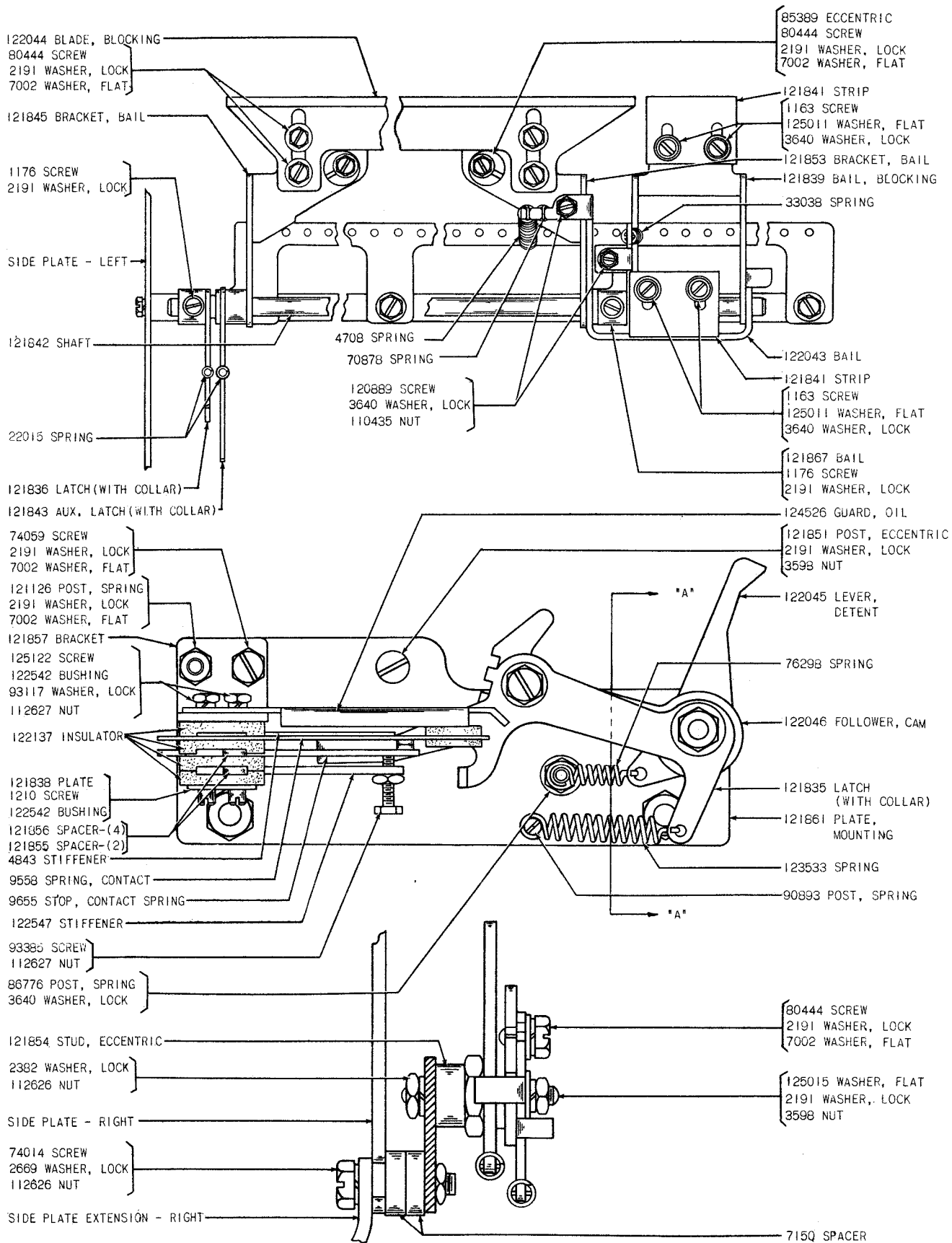
115173 LEVER, CONTACT OPERATING

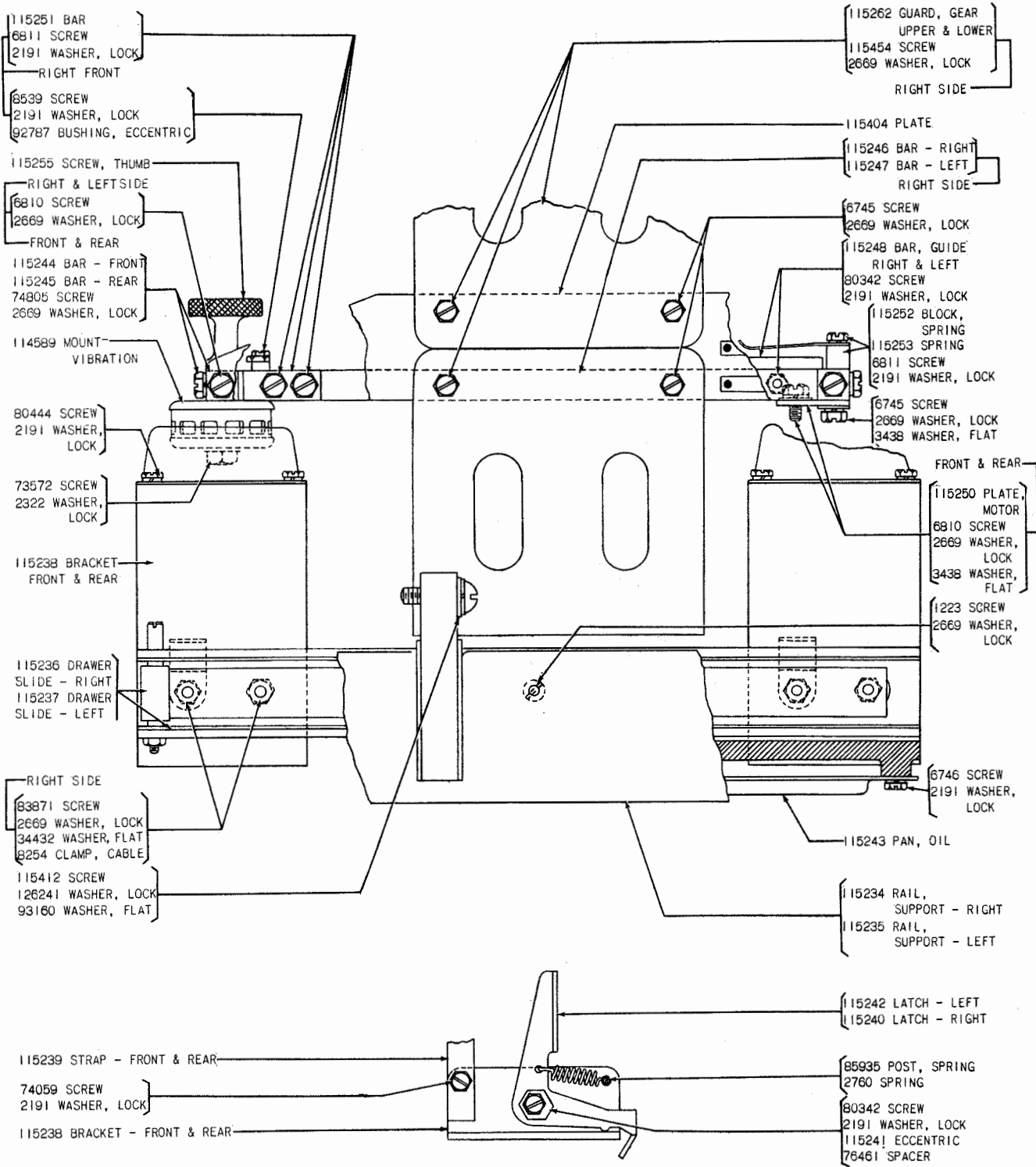
115179 LEVER, FUNCTION - WITHOUT TOE
(SEE NOTE)



NOTE: A 55090 SPRING IS USED WITH THE STANDARD
115179 FUNCTION LEVER - WITHOUT TOE.
A 121350 SPRING IS USED WITH A 115294
FUNCTION LEVER - WITH TOE.
(SEE PAGE 1 FOR LOCATION OF SPRINGS.)

FUNCTION LEVER



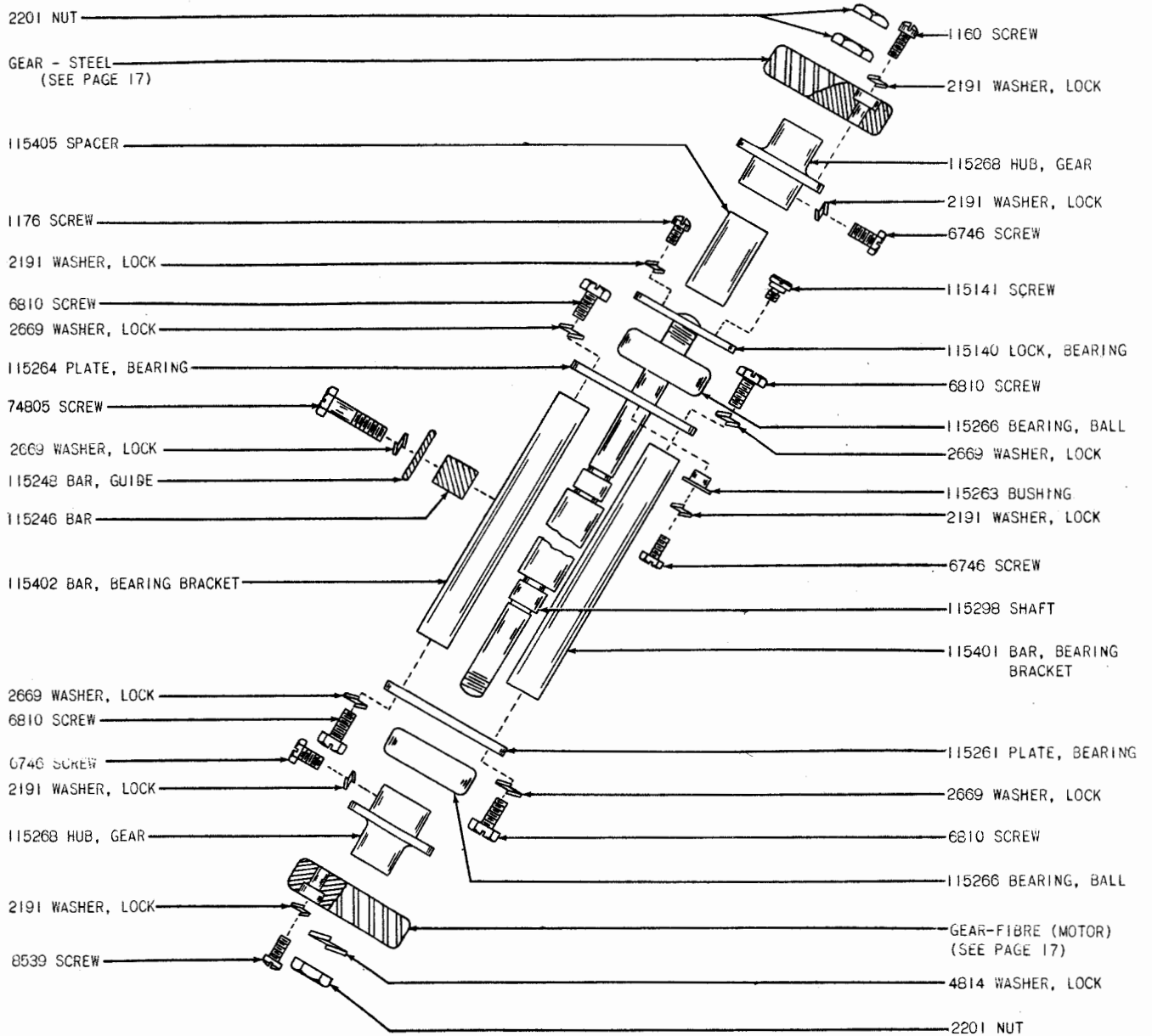


NOTE: UNLESS OTHERWISE SPECIFIED ALL PARTS LISTED ON THIS PAGE ARE THE SAME AS CORRESPONDING PARTS ON THE FRONT, REAR AND LEFT SIDE OF THE SELECTOR PANEL.

LATCHING ASSEMBLY RIGHT & LEFT

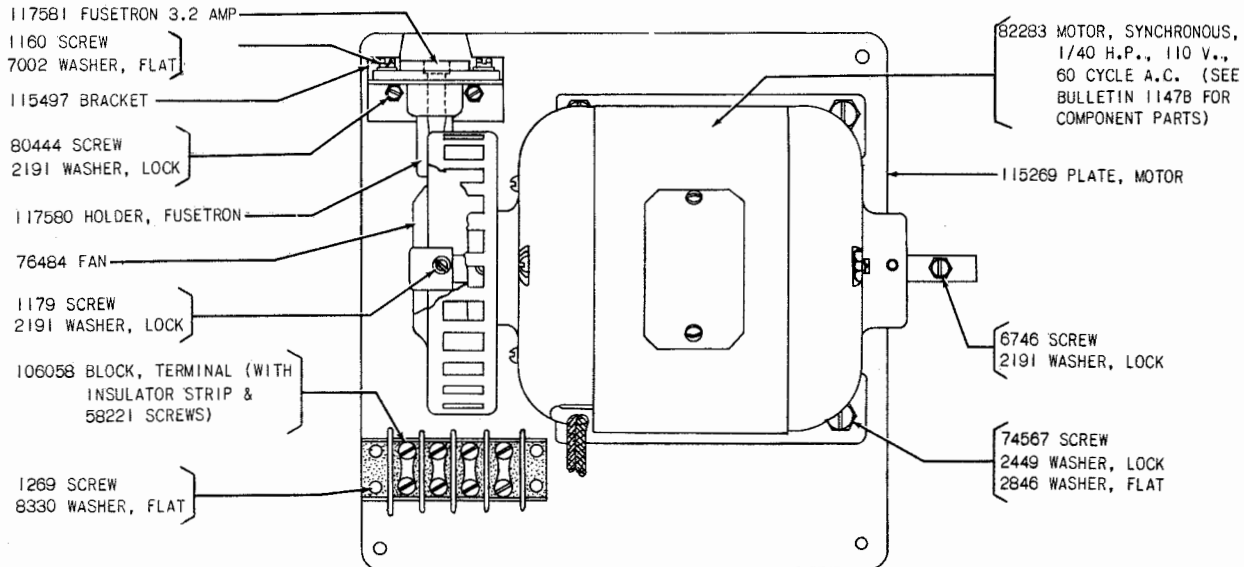
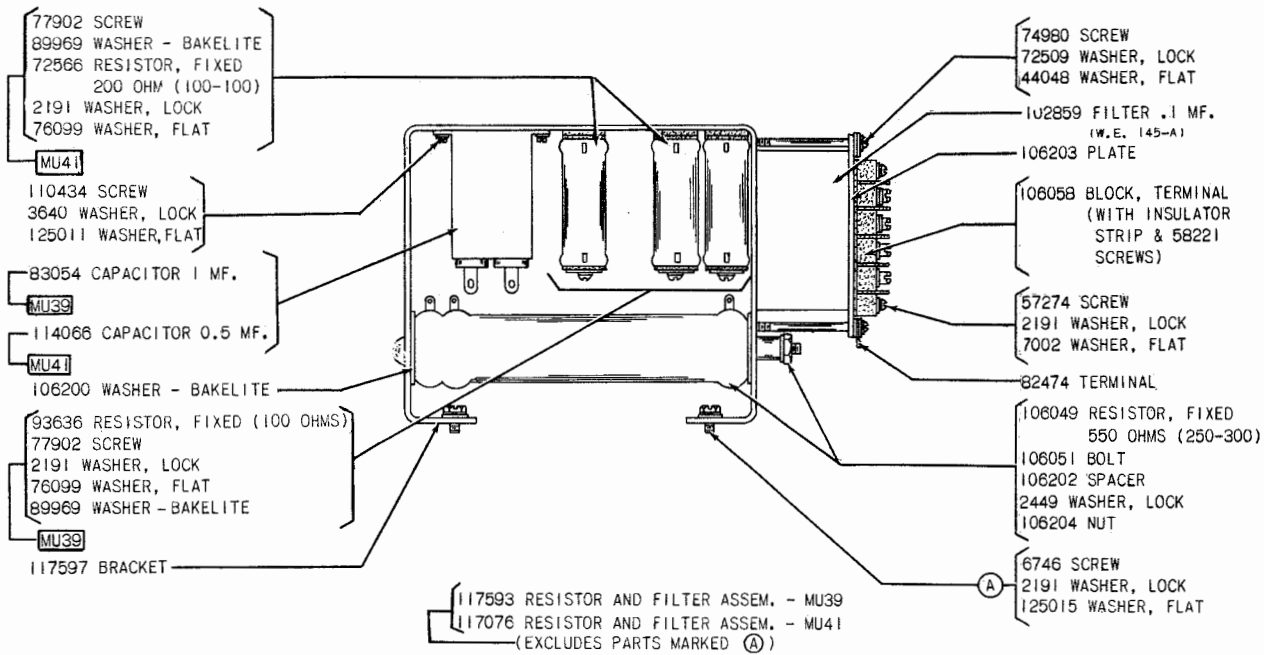
BSP2
SELECTOR PANEL

{ INCLUDES PARTS LISTED ON THIS PAGE AND
PANEL COUNTER SHAFT SHOWN ON PAGE 16 }



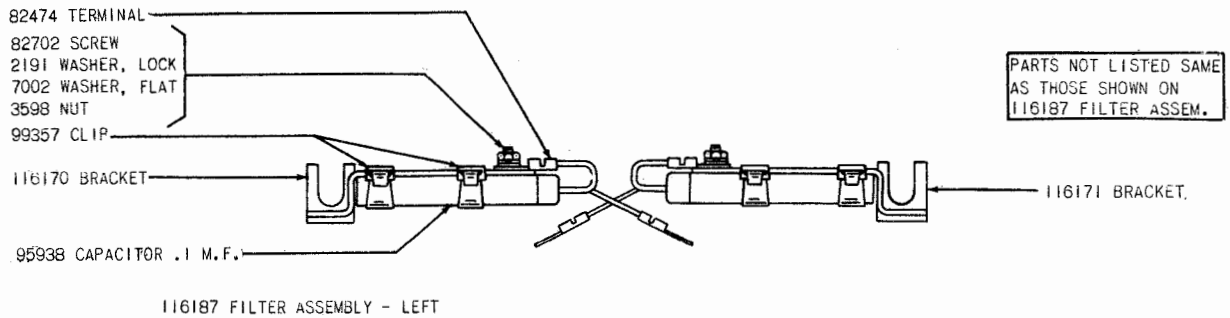
(FRONT VIEW)

PANEL COUNTER SHAFT
BSP2 SELECTOR PANEL

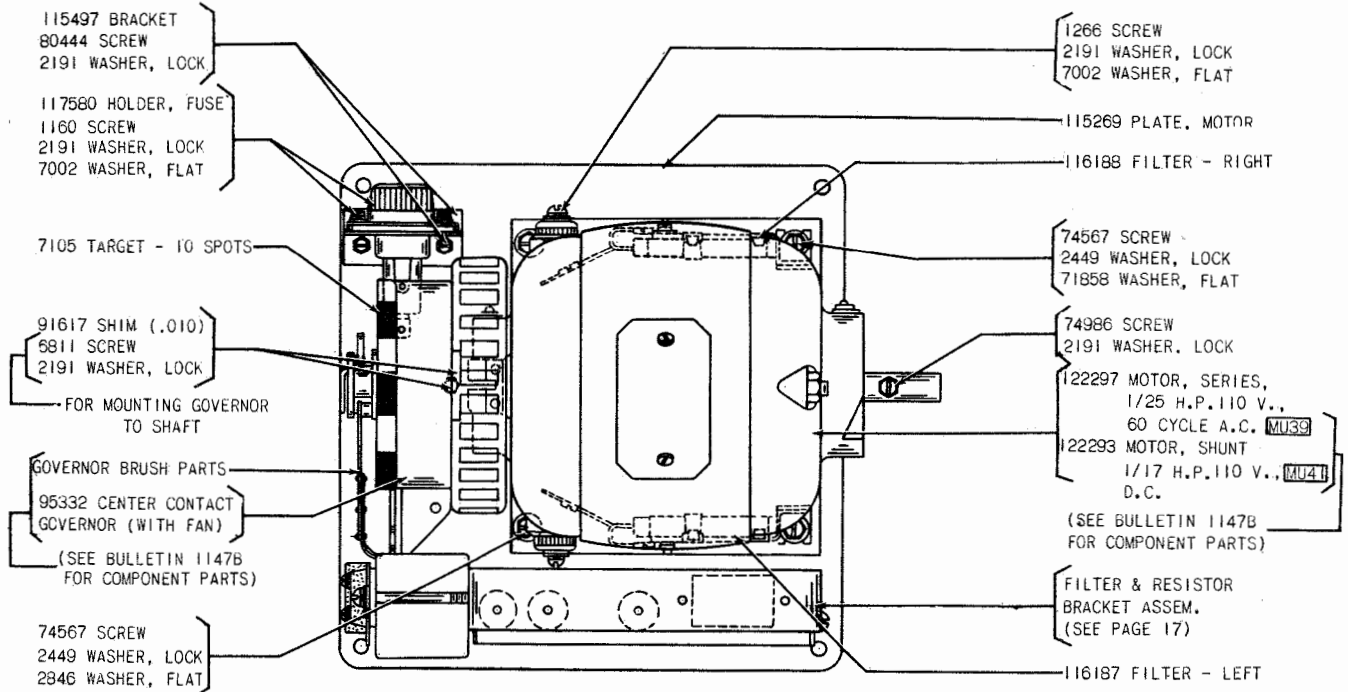


MU38 MOTOR UNIT (INCLUDES 82283 SYNCHRONOUS MOTOR, 1/40 H.P., 110 V., 60 CYCLE A.C.)

GEAR CHART				
LOCATION	GEAR DESCRIPTION	GEAR DESCRIPTION	SET NUMBER	USED ON
SELECTOR DRIVE 60 WPM	115273 GEAR 19T.-(STEEL)	115274 GEAR 31T.-(FIBRE)	115272	BS2 & 3
	122107 GEAR 28T.-(STEEL)	122108 GEAR 40T.-(FIBRE)	122225	BS6
SELECTOR DRIVE 75 WPM	115276 GEAR 23T.-(STEEL)	115277 GEAR 30T.-(FIBRE)	115275	BS2 & 3
	122100 GEAR 28T.-(STEEL)	122101 GEAR 32T.-(FIBRE)	122099	BS6
MOTOR (60 OR 75 WPM) 60 CYCLE SYNCHRONOUS	110869 GEAR 16T.-(STEEL)	110870 GEAR 42T.-(FIBRE)	111611	BS2 & 3
	122097 GEAR 15T.-(STEEL)	122098 GEAR 45T.-(FIBRE)	122096	BS6
MOTOR (60 OR 75 WPM) 25 & 60 CYCLE GOVERNED	110874 GEAR 14T.-(STEEL)	110875 GEAR 43T.-(FIBRE)	111612	BS2 & 3
	122859 GEAR 10T.-(STEEL)	122860 GEAR 35T.-(FIBRE)	122858	BS6



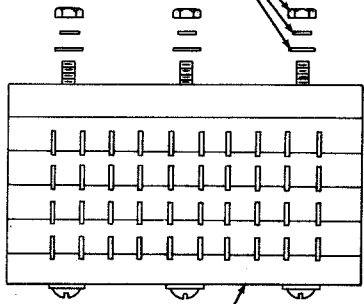
119932 FUSETRON 1.6 AMP. - MU39
117077 FUSETRON 0.8 AMP. - MU41



MU39 MOTOR UNIT (INCLUDES 122297 SERIES MOTOR, 1/25 H.P., 110 V., 60 CYCLE A.C.)
MU41 MOTOR UNIT (INCLUDES 122293 SHUNT MOTOR, 1/17 H.P., 110 V., D.C.)

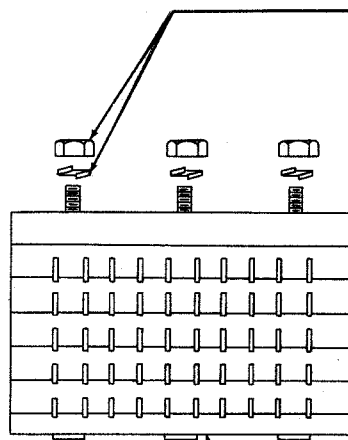
SEE PAGE 17 FOR ADDITIONAL PARTS USED WITH MU39 AND MU41 MOTOR UNIT

3640 WASHER, LOCK
125011 WASHER, FLAT
110435 NUT
FOR MOUNTING TERMINAL
BLOCK TO SEQUENTIAL SELECTOR

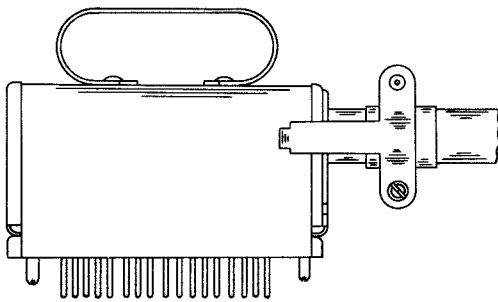


117582 BLOCK, TERMINAL — BS2 & 3

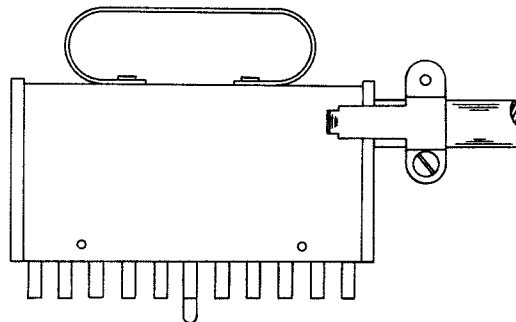
3606 NUT
2191 WASHER, LOCK
FOR MOUNTING
TERMINAL BLOCK
TO SEQUENTIAL
SELECTOR



117625 BLOCK, TERMINAL — BS6

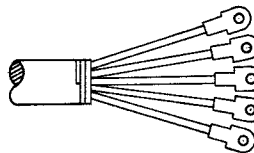
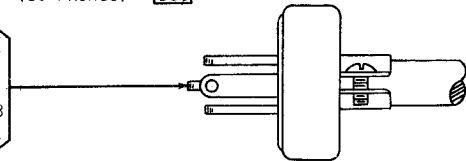


122967 CABLE ASSEM. INCLUDES
124592 CONNECTOR, PLUG
(50 PRONGS) — BS6



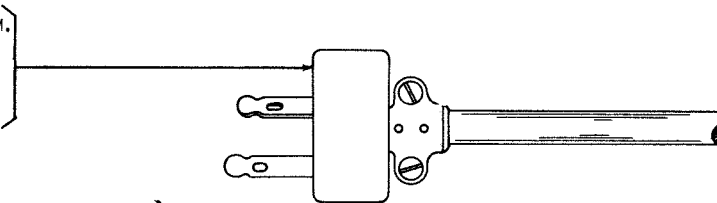
117592 CABLE ASSEM. INCLUDES
101976 CONNECTOR, PLUG
(33 PRONGS) — BS2 & 3

95052 CABLE ASSEM.
INCLUDES 95064
CONNECTOR PLUG
(4 PRONGS) 95053
CORD WITH TERMINAL

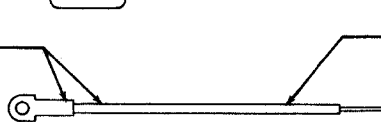


92474 TERMINALS

117590 CABLE ASSEM.
INCLUDES 101965
CONNECTOR PLUG
(3 PRONG) 117591
CORD



117615 STRAP (WITH TERMINAL) RED
117616 STRAP (WITH TERMINAL) WHITE
117617 STRAP (WITH TERMINAL) GREEN



WIRE STRAP 4-1/4"

CABLES
(SEE NOTE 2 ON PAGE 12)

ELECTRICAL CIRCUIT CONNECTORS

NUMERICAL INDEX

PART NO.	DESCRIPTION	PART NO.	DESCRIPTION	PART NO.	DESCRIPTION
MU38	Motor Unit, 17	8543	Screw (6-40 x 1/4), 2,4,9	90509	Detent, 8
MU39	Motor Unit, 18	9558	Spring, Contact, 14	90510	Spring, 8
MU41	Motor Unit, 18	9655	Stop, Contact Spring, 14	90511	Screw (6-40 x 13/16), 8
207M	Coil, Magnet, (92 ohms per coil), 8	22015	Spring, 6, 14	90512	Bracket, Selector Arm, 8
1030	Screw (6-40 Shoulder), 8	31636	Spring, 4	90513	Eccentric 8
1038	Screw (6-40 x 9/32), 9	33038	Spring, 14	90514	Screw (3/16-40 Pivot), 8
1050	Screw (6-40 x 7/32), 8	34432	Washer, Flat, 3,8,15	90515	Screw (3/16-40 Pivot), 8
1073	Screw (6-40 Thumb), 8	41382	Spring, 10	90516	Arm, Selector, 8
1104	Screw (10-32 Thumb), 11	41732	Plate, Clamp, 12	90517	Spring, 2,8
1159	Screw (4-40 x 3/8), 6,9	41733	Insulator, 12	90518	Wedge, Locking, 8
1160	Screw (6-40 x 5/16), 7,9,10, 16,17,18	44048	Washer, 17	90519	Screw (2-56 x 5/32), 8
1161	Screw (6-40 x 1/4), 10	49420	Spring, 9	90520	Lever, Armature, 8
1162	Screw (4-40 x 1/4), 1,2,9, 10	55090	Spring, 1,2	90524	Screw (4-40 Special), 8
1163	Screw (4-40 x 3/16), 9,14	57274	Screw (6-32 x 1/2), 17	90759	Link, Armature Bracket, 8
1169	Screw (4-40 x 7/16), 1,11	58221	Screw (6-32 x 1/4), 10,17	90774	Crank, Bell, 8
1174	Screw (4-40 Shoulder), 4	70878	Spring 14	90787	Screw (4-40 x 3/8), 6
1176	Screw (6-40 x 3/16), 1,11,14, 16	71073	Washer, Flat, 8	90791	Washer, Lock, 8
1179	Screw (6-40 x 5/8), 17	71505	Wick, Oil-Felt, 11	90893	Post, Spring, 14
1200	Screw (6-40 x 9/32), 4	71697	Plate, Clamping, 8	91120	Spring, 8
1210	Screw (2-56 x 5/8), 14	71698	Scale, Range, 8	91617	Shim (0.010), 18
1223	Screw (10-32 x 1/2), 15	71858	Washer, 18	92273	Core, Magnet, 8
1266	Screw (6-32 x 7/16), 18	71976	Plate, Stop Pawl, 8	92787	Bushing, Eccentric, 15
1269	Screw (6-40 x 1/2), 11,17	72263	Post, 4	93117	Washer, Lock, 14
2191	Washer, Lock, 1,2,3,4,5,7, 8,9,10,11,14,15,16,17,18, 19	72508	Screw (6-40 x 3/4), 2,3	93141	Screw (6-40 x 7/32), 1
2201	Nut (5/16-32 Hex.), 4,5,7,16	72509	Washer, Lock, 17	93160	Washer, 15
2322	Washer, Lock, 15	72521	Wick, Oil-Felt, 11	93385	Screw (2.56 x .406), 14
2382	Washer, Lock, 14	72563	Washer-Felt, 11	93443	Post, 10
2415	Spring, 5	72565	Washer, Lock, 11	93636	Resistor (100 ohms), 17
2449	Washer, Lock, 17,18	72566	Resistor, Fixed -200 Ohms, 17	93899	Spring, 10
2535	Spacer, 6	72644	Bearing, Ball, 11	95052	Cable Assem. - Includes 95064 Plug (4 prong) and 95053 Cord with Terminal, 19
2623	Spring, 3	72885	Spring, 10	95053	Cord (With Terminal), 19
2669	Washer, Lock, 5,7,8,9,14,15, 16	73572	Screw (1/4-20 x 1), 15	95064	Connector, Plug (4 prong), 19
2760	Spring, 15	74014	Screw (10-32 x 3/4), 7,14	95332	Governor Center Contact, (with Fan), 18
2846	Washer, 17,18	74059	Screw (6-40 x 7/32), 1,7,10, 14,15	95938	Capacitor, .1 MF., 18
3339	Nut (9/16-32 Hex.), 11	74100	Washer-Leather, 11	96717	Screw (4-40 Shoulder), 1
3340	Washer, Lock, 11	74399	Screw (6-40 Pilot), 8	97317	Plate, Clamp, 8
3438	Washer, 7,9,15	74567	Screw (1/4-20 x 33/64), 17, 18	97393	Screw (6-40 Shoulder), 9
3598	Nut (6-40 Hex.), 4,5,7,8,9, 10,14,18	74613	Screw (4-40 x 1/4), 9	98442	Washer, Lock, 3
3599	Nut (4-40 Hex.), 1,4,5,8,10, 11	74702	Spring, 3	99357	Clip, 18
3606	Nut (6-40 Hex.), 8,10,19	74716	Bushing, 12	101965	Connector, Plug (3 prong), 19
3608	Spring, 10	74722	Washer, 8,11	101976	Connector, Plug (33 prong), 19
3610	Spring, 3	74805	Screw (10-32 x 3/4), 15,16	102859	Filter .1 MF., 17
3640	Washer, Lock, 1,2,4,5,8,9, 10,14,17,19	74980	Screw (6-40 x 1-13/16), 17	103539	Screw (6-40 x 3/8), 10
3646	Washer, Lock, 3,4,7,11	74986	Screw (6-40 x 13/32), 7,18	104705	Bearing, Ball, 11
4708	Spring, 8,14	76099	Washer, Flat, 1,17	105101	Plate, Side - Right, 7
4814	Washer, Lock, 16	76298	Spring, 14	106049	Resistor (550 ohms), 17
4843	Stiffener, 14	76461	Spacer, 15	106051	Bolt (1/4-20 x 6*), 17
5446	Screw (4-40 x 9/16), 4,10	76484	Fan, 17	106058	Block, Terminal, & Insulator (includes 58221 Screws), 17
5475	Nut (3/16-40 Hex.), 8	77902	Screw (6-40 x 2-3/8), 17	106200	Washer-Bakelite, 17
5740	Screw (2-56 x 1/4), 5	78103	Screw (6-40 x 1-1/8), 3	106202	Spacer, 17
6685	Sword, 8	78163	Post, 8	106203	Plate, 17
6689	Plate, Separator, 8	78164	Post, Selector, 8	106204	Nut, (1/4 - 20 Hex.), 17
6745	Screw (10-32 x 1/2), 9,15	78596	Washer, 8	106244	Resistor (1,000 ohms), 1
6746	Screw (6-40 x 5/16), 1,3,4, 5,8,10,11,15,16,17	78597	Screw (10-32 Shoulder), 8	106245	Resistor (5,000 ohms), 8
6799	Screw (6-40 Shoulder), 8	80334	Terminal, Contact, 12	109557	Spacer, 6
6801	Screw (4-40 Pilot), 8	80342	Screw (6-40 x 23/64), 3,7, 10, 15	110434	Screw (4-40 x 3/16), 10,17
6810	Screw (10-32 x 3/8), 5,7, 15,16	80444	Screw (6-40 x 1/4), 4,5,7, 8,10,11,14,15,17,18	110435	Nut (4-40 Hex.), 6,8,14,19
6811	Screw (6-40 x 5/8), 8,15,18	80508	Screw (4-40 x 25/32), 12	110437	Spring, 1,9,10
6909	Pawl, Stop, 8	80721	Washer, 8	110743	Washer, Lock, 11
6966	Stop, Eccentric, 8	82283	Motor, Synchronous, 1/40 H.P., 110V., 60 Cycle A.C., 17	110869	Pinion - 16T, 17
7001	Washer, 8	82440	Screw (6-40 x 7/16), 7,8,10	110870	Gear - 42T, 17
7002	Washer, 1,3,4,5,8,9,10,11, 14,17,18	82474	Terminal, 17,18,19	110874	Pinion - 44T, 17
7007	Flunger, Trip, 8	82702	Screw (6-40 x 9/32), 3,18	110875	Gear - 43T, 17
7105	Target (10 Spot), 18	82861	Spring, 10	111611	Set of Gears, 17
7150	Spacer, 7,14	82864	Condenser 1. MF., 17	111612	Set of Gears, 17
7415	Nut (1/2-32 Hex.), 11	83054	Screw (10-32 x 5/16), 15	112626	Nut (10-32 Hex.), 5,7,14
7602	Spring, 8	83871	Screw (10-32 x 5/16), 15	112627	Nut (2-56 Hex.), 14
7603	Spring, 8,11	84021	Clamp, Cable, 7	112634	Spring, 3,6,9
7607	Collar, 8	85389	Eccentric, 14	112827	Screw (6-40 Shoulder), 10
7614	Spring, 8	85935	Post, Spring, 15	112933	Post, 10
8157	Lever, Selector, 8	86776	Post, Spring, 14	113952	Washer-Felt, 11
8158	Lever, Selector, 8	87638	Screw (2-56 x 3/32), 9	113954	Disk, 11
8254	Clamp, Cable, 15	89881	Wick, Oil-Felt, 11	113955	Disk, Driving, 11
8330	Washer, Flat, 1, 17	89969	Washer-Bakelite, 17	113956	Plate, Selector, 8
8539	Screw (6-40 x 1/2), 10,15,16	90024	Retainer, Coil, 8	114066	Capacitor, .5 MF., 17
		90043	Bracket, Armature, 8	114316	Spring, 11
		90069	Post, Detent, 8	114589	Mount - Vibration, 15
		90088	Latch, Trip, 8	115032	Code Lever (With Name Plate) (NO Code), 6
		90265	Screw (6-40 Special), 8	115066	A,
		90505	Lever, Locking, 8	115067	B,
		90507	Plate, Separator Top, 8	115068	C,
		90508	Arm, Spring, 8	115069	D,

NUMERICAL INDEX

PART NO.	DESCRIPTION	PART NO.	DESCRIPTION	PART NO.	DESCRIPTION
	<u>Name Plate</u>				
115070	E,	115185	Shield, Contact, 3	115407	Post, 3
115071	F,	115186	Plunger (1-5/32"), 12	115408	Plunger (2-7/64"), 12
115072	G,	115187	Lower Contact Assem., 12	115409	Post - Bakelite, 3
115073	H,	115188	Spring, 12	115410	Extension, Side Plate- Left, 7
115074	I,	115190	Insulator, 12	115411	Extension, Side Plate- Right, 7
115075	J,	115192	Spring, 12	115412	Screw (7/32-24 x 7/8), 15
115076	K,	115194	Plate, 9	115413	Collar, 11
115077	L,	115195	Bracket, 9	115414	Shaft, 5
115078	M,	115197	Comb, 9	115415	Post, 5
115079	N,	115198	Comb, 9	115424	Screw (6-40 Shoulder), 4,5
115080	O,	115201	Screw (6-40 Shoulder), 9	115425	Spacer, 9
115081	P,	115205	Wedge, Blocking Lever, 9	115439	Plunger (1-17/64"), 12
115082	Q,	115206	Bracket, 1	115454	Screw (10-32 x 5/16), 15
115083	R,	115207	Lever, Transfer, #1,8	115455	Insulator, 1
115084	S,	115208	Lever, Transfer, #2,8	115475	Cable, 8
115085	T,	115209	Lever, Transfer, #3,8	115497	Bracket, Fusetron, 17,18
115086	U,	115210	Lever, Transfer, #4,8	115498	Bracket, 5
115087	V,	115211	Lever, Transfer, #5,8	115499	Crank, Bell, 13
115088	W,	115212	Comb, 1	116170	Bracket, 18
115089	X,	115213	Nut (4-40 Hex.), 3,9	116171	Bracket, 18
115090	Y,	115214	Screw (4-40 x 3/32), 3,5	116187	Filter Assem. - Left, 18
115091	Z,	115216	Shaft, Clutch Trip, 4	116188	Filter Assem. - Right, 18
115092	LF,	115217	Screw (5/16-32 Pivot), 4,7	117076	Resistor & Filter Assem. 17
115093	SP,	115218	Lever, Clutch Trip, 4	117077	Fusetron 0.8 AMP., 18 Code Lever (With Name Plate)
115094	CR,	115220	Eccentric, 5	117450	A,
115095	FIG,	115221	Washer-Felt, 4	117451	B,
115096	LET,	115223	Post, 3	117452	C,
115097	BL,	115225	Comb, 1	117453	D,
115098	(NO CODE)	115226	Bracket, 2	117454	E,
115100	Plate, Side-Left, 3,7	115227	Plate, Name, 9	117455	F,
115101	Plate, Side-Right, 3,7	115229	Lever, Detent, 3	117456	G,
115102	Bar, Stop, 3	115231	Bar, Push, 1	117457	H,
115103	Bar, 3	115232	Sleeve, Cam, 11	117458	I,
115104	Bar, Spring, 3	115234	Rail, Support - Right, 15	117459	J,
115105	Bracket, 2,3	115235	Rail, Support - Left, 15	117460	K,
115106	Shaft, 9	115236	Drawer Slide - Right, 15	117461	L,
115107	Key, Cotter, 1,3,9	115237	Drawer Slide - Left, 15	117462	M,
115108	Bar, 3	115238	Bracket, 15	117463	N,
115109	Bar, Spring, 3	115239	Strap, 15	117464	O,
115110	Comb, 3	115240	Latch - Right, 15	117465	P,
115111	Block, 3	115241	Eccentric, 15	117466	Q,
115112	Comb, 3	115242	Latch - Left, 15	117467	R,
115113	Guide, Plunger, 3	115243	Fan, Oil, 15	117468	S,
115114	Bracket - Right, 4	115244	Bar - Front, 15	117469	T,
115116	Bracket - Left, 4	115245	Bar - Rear, 15	117470	U,
115121	Screw (6-40 Shoulder), 4,5	115246	Bar - Right, 15,16	117471	V,
115122	Washer-Felt, 4,5,13	115247	Bar - Left, 15	117472	W,
115127	Bail, Latch, 5	115248	Bar, Guide, 15,16	117473	X,
115128	Plate, Stripper Arm - Left (With Post), 5	115250	Plate, Motor, 15	117474	Y,
115129	Plate, Stripper Arm -Right (With Post), 5	115251	Bar, 15	117475	Z,
115130	Spacer, 5	115252	Block, Spring, 15	117476	LF,
115133	Screw (5/16-32 Pilot), 4,5,7	115253	Spring, 15	117477	SP,
115134	Washer-Felt, 4,5	115254	Bracket - Right, 7	117478	CR,
115140	Lock, Bearing, 11,16	115255	Screw (1/4-20 Thumb), 15	117479	BL,
115141	Screw (6-40 Shoulder), 11,16	115256	Bracket - Left, 7	117480	FIG,
115146	Sleeve, 11	115261	Plate, Bearing, 16	117481	LET,
115147	Arm, Drive, 11	115262	Guard, Gear, 15	117504	Upper Contact Assem., 12
115148	Disk, 11	115263	Bushing, 16	117505	Lever, Detent, 1
115150	Link, Drive, 11	115264	Plate, Bearing, 16	117506	Vane #6, 2
115151	Cam, Detent, 11	115266	Bearing, Ball, 16	117507	Bearing, 10
115152	Disk, 11	115268	Hub, Gear, 16	117508	Plate, Front, 10
115153	Eccentric, Main Bail, 11	115269	Plate, Motor, 17,18	117509	Plate, Rear, 10
115154	Link, Drive, 11	115272	Set of Gear, 17	117510	Bar, Contact, 12
115156	Hub, Gear, 11	115273	Gear - 19T (60 W.P.M.), 17	117511	Insulator, 10
115157	Plate, Bearing, 11	115274	Gear - 31T (60 W.P.M.), 17	117512	Block, Terminal, 10
115158	Bushing, 11	115275	Set of Gear, 17	117513	Pinion - 2T, 10
115162	Bar, 1	115276	Gear - 23T (75 W.P.M.), 17	117514	Screw (4-40 Eccentric), 10
115163	Guide, Vane, 2	115277	Gear - 30T (75 W.P.M.), 17	117515	Bar, Blocking, 10
115164	Stop, Vane, 1,2	115280	Plate, Name, 9	117517	Bail, Sensing, 10
115165	Bracket, Spring, 2	115281	Lever, Trip-Off, 9	117518	Bracket, 10
115166	Vane #1, 2	115282	Latch (With Post), 9	117519	Follower, Cam, 10
115167	Vane #2,2	115284	Lever, Operating, 9	117520	Shaft, 10
115168	Vane #3,2	115286	Bracket, 9	117528	Bar, Trip, 10
115169	Vane #4,2	115287	Bracket, 9	117529	Spacer, 10
115170	Vane #5,2	115288	Lever, Blocking, 9,12	117530	Shaft, 10
115171	Comb, 2	115289	Lever, Blocking, 9,12	117531	Post, 10
115172	Comb, 2,6	115293	Lever, Blocking, 12	117532	Catch, 10
115173	Lever, Contact Operating, 13	115294	Lever, Function, (With Toe), 2,13	117533	Shaft, 10
115175	Bar, Pull, 3,13	115295	Lever, Latching, 12	117534	Lever, Blocking, 10
115178	Lever, Lock, 1,2	115296	Lever, Latching, 12	117535	Spacer, 10
115179	Lever, Function-Without Toe, 13	115297	Lever, Latching, 12	117536	Lever, Blocking, 10
115182	Shaft, 2,3	115298	Shaft, 16	117537	Spacer, 10
115183	Bracket, 3	115299	Block, Terminal, 1	117538	Latch Assem., 10
115184	Bar, Contact, 3,12	115401	Bar, Bearing Bracket, 16	117539	Shaft, 10
		115402	Bar, Bearing Bracket, 16		
		115404	Plate, 15		
		115405	Spacer, 16		

NUMERICAL INDEX

PART NO.	DESCRIPTION	PART NO.	DESCRIPTION	PART NO.	DESCRIPTION
117540	Bail Assem., 10	119540	Nut-Keyed, 11	121854	Stud, Eccentric, 14
117541	Spacer, 10	119629	Link, 8	121855	Spacer, 14
117542	Lever, Contact, 10	119922	Nut (5/16 Shoulder), 4,7	121856	Spacer, 14
117543	Collar, 10	119923	Disk Retaining, (New Style), 11	121857	Bracket, 14
117544	Bail, Blocking, 10	119924	Shaft, (New Style), 11	121861	Plate, Mounting, 14
117545	Shaft, 10	119932	Fusetron 1.6 AMP., 18	121862	Cam, "H" Answer Back, 11
117546	Collar, 10	120540	Collar, 10	121865	Vane #6, 2
117547	Disc, Retaining, 10	120886	Bail Stripper, 5	121866	Lever, Function
117548	Gear - 31T, 10	120887	Post, Stop, 5	121867	Bail, 14
117549	Washer-Felt, 10	120888	Plate, Locating, 5	122043	Bail, 14
117550	Clutch - Driven, 10	120889	Screw (4-40 x 3/4), 5, 14	122044	Blade, Blocking, 14
117551	Clutch - Driving, 10	120890	Bail, Latch Backstop, 5	122045	Lever, Detent, 14
117552	Shaft, 10	120891	Clip, (No Code), 6	122046	Follower, Cam, 14
117554	Lever, Contact Operating, 3, 13	121043	Pawl, Clutch, 11	122050	Mechanical Timer Assem., 6, 10
117565	Post, 3	121044	Lever, Clutch, 11	122137	Insulator, 14
117571	Bracket, 10	121045	Ratchet, 11	122199	Follower, Cam, 6
117576	Lever, Latching, 12	121065	Bail, Eccentric Stripper, 11	122227	Shaft, 6
117578	Mechanical Timer Assem., 10	121068	Spring, 12	122276	Blocking Lever Clutch Assem., 4
117579	Lever, Contact Operating, 13	121070	Timer Contact Assem., 10, 12	122277	Bracket, 4
117580	Holder, Fusetron, 17, 18	121071	Spring, 5	122278	Lever, Blocking, 4
117581	Fusetron - 3.2 Amp., 17	121100	Spring, 13	122293	Motor, Shunt, 1/17 H.P., 110V., D.C., 18
117582	Block, Terminal, 19	121101	Lever, Latching, 12	122297	Motor, Series, 1/25 H.P., 110V., 60 Cycle AC, 18
117588	Sleeve, Cam Assem., 10	121126	Post, Spring, 14	122542	Bushing, 14
117590	Cable Assem. Includes 101965 Plug (3 Prong), 117591 Cord & 82474 Terminal, 19	121347	Bracket, 9	122547	Stiffener, 14
117591	Cord, 19	121348	Bracket, 9	122838	Shim, 10, 11
117592	Cable Assem. Includes 101976 Plug (33 Prongs), 19	121349	Plate, 9	122967	Cable Assem., 19
117593	Resistor & Filter Assem., 17	121350	Spring, 1, 2	122974	Nut - Capstan, 11
117597	Bracket, 17	121394	Eccentric, 4	123533	Spring, 14
117602	Screw (6-40 Shoulder), 4	121429	Link, 5	123728	Plate, 4
117603	Screw (6-40 Shoulder), 3, 4, 7, 11	121832	Bail Assem., 9	123729	Guide, 1
117606	Vane #6, 2	121833	Lever, Contact Operating, 3, 13	123730	Bar, 2
117615	Strap (W. Term.) Red, 19	121834	Spring, 13	123731	Post, Eccentric, 3
117616	Strap (W. Term.) White, 19	121835	Latch (With Collar), 14	123732	Plate, 8
117617	Strap (W. Term.) Green, 19	121836	Latch (With Collar), 14	123733	Bracket - Left, 4
117618	Spring, 12	121838	Plate, 14	123734	Bracket, Driving Link, 4
117619	Spring, 12	121839	Bail, Blocking, 14	123735	Bracket, 4
117620	Universal Contact, 12	121840	Bracket, 9	123736	Bracket, Driving Link, 4
117625	Block, Terminal, 19	121841	Strip, 14	123737	Bar, 4
119538	Guard, 3	121842	Shaft, 14	123738	Bar, 4
119539	Stud, 3	121843	Aux. Latch (With Collar), 14	123739	Link, 4
		121844	Bracket, 4	123740	Bail, 4
		121845	Bracket, Bail, 14	124526	Guard, Oil, 14
		121846	Lever, Holding, 6	124592	Connector, Plug (50 Prongs), 19
		121847	Guide, 1	125011	Washer, Flat, 1, 10, 11, 14, 17, 19
		121848	Lever, Blocking, 6	125015	Washer, Flat, 8, 14, 17
		121849	Cam, Detent, 11	125112	Screw (2-56 x 1/8), 9
		121851	Post, Eccentric, 14	125122	Screw (2-56 x 3/4), 14
		121852	Lever, Trip, 6	125168	Screw (6-40 x 1/4 Set), 11
		121853	Bracket, Bail, 14	126241	Washer, Lock, 15

