

BULLETIN 1137B
SUPERSEDES
ALL ISSUES OF
1133B AND 1137B

TELETYPE

PRINTING TELEGRAPH SYSTEMS

BULLETIN 1137B
PARTS
MULTIPLE TRANSMITTER BASES,
MULTIPLE TRANSMITTER DISTRIBUTORS,
MULTIPLE TRANSMITTING DISTRIBUTORS



ATTENTION—BELL SYSTEM ONLY
WHEN ORDERING PARTS FROM THIS BULLETIN, EACH NUMBER SHOULD BE
PRECEDED BY THE LETTERS TP, WITHOUT PARENTHESES, IN ORDER TO
IDENTIFY THE ITEM AS ONE TO BE SECURED FROM THE TELETYPE CORPORATION.

)

)

)

)



LIST OF EFFECTIVE PAGES

JUNE, 1958

(SUPERSEDES AUGUST, 1948 ISSUE)

Page Numbers	Change In Effect	Page Numbers	Change In Effect
A to D 1 to 27	Original Original		

The above list indicates the effective pages as of the date of issue. Upon receipt of change pages, insert them numerically and discard any superseded pages.

ALPHABETICAL INDEXMULTIPLE TRANSMITTER DISTRIBUTOR BASES

<u>Description</u>	<u>Page</u>	<u>Description</u>	<u>Page</u>
Base - bottom view	2	Power cords	8
Base - top view	1	Receptacle type connectors	3
Cables	8	Resistor - capacitor assembly	3
Card holders	13	Selector levers	17
Control relays	6	Slip connection block	3
Cover Chart	9	Synchronous motor	7
Covers		Tape chutes	13
Front	10	Tape feed parts	17
Left	12	Tape-out contact lever upstop	17
Rear	9	Tape reels	
Right	11	75 foot capacity	6
Tap	13, 14	250 foot capacity	6
Filter unit	7	Tape winders	
Governed motor	7	75 foot capacity	4
Pinions and gears	7	250 foot capacity	5

MULTIPLE TRANSMITTER DISTRIBUTORS

Base plate	15, 16	Contact lever assembly	18
Cables	20	Filter assemblies	20
Cam sleeves	15, 16	Gears	15
Clutch		Letters sensing mechanism	18
Internal expansion	16	Release bar contacts	18
Positive action	15	Top plate	19
Clutch trip assembly	16		

MULTIPLE TRANSMITTING DISTRIBUTORS

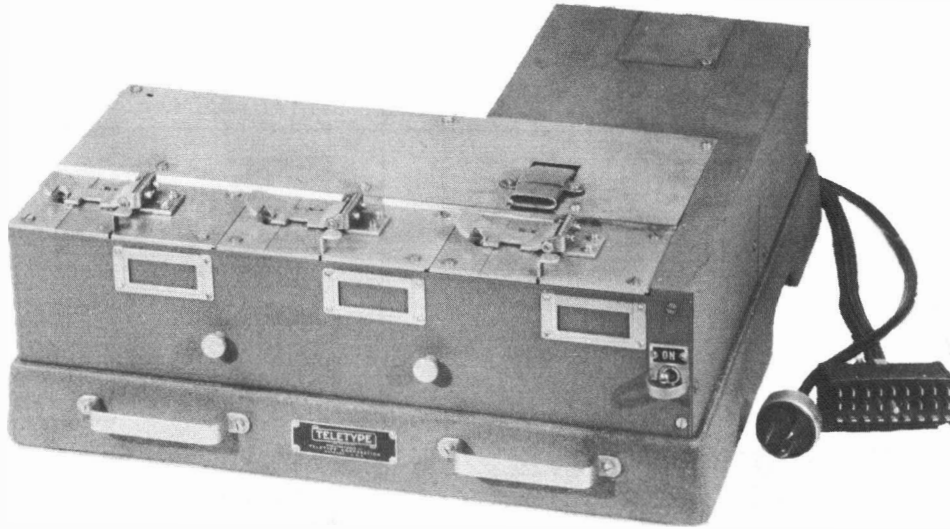
Base plate	22	Contact lever assembly	21
Cam sleeve	21	Filter assembly	21
Clutch parts	21	Top plate	22

SPECIAL MULTIPLE TRANSMITTING DISTRIBUTOR AND BASE

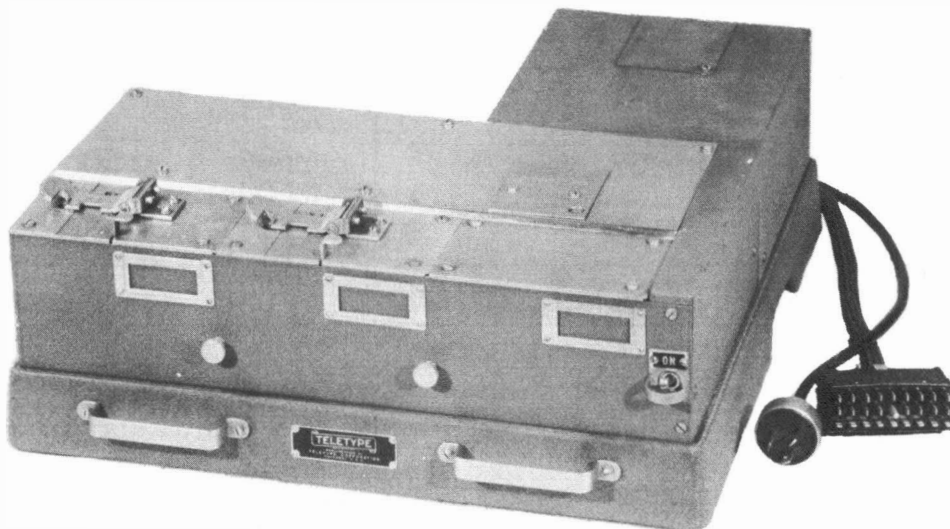
Base	25	Power cord	26
Cables	26	Terminal strip	24
Cam sleeve	23	Transmitter assembly	23
Clutch magnet	24	Transmitter contacts	23
Main shaft	26		

UNITS COVERED HEREIN		
DESCRIPTION	TELETYPE CODE	SPEED (WPM)
MULTIPLE TRANSMITTER BASE (MESSAGE)	MXB12	60
	MXB17	100
	MXB202**	60
	MXB207**	60
	MXB220**	60,75,100
	MXB222**	60,75,100
	MXB227**	75
MULTIPLE TRANSMITTER BASE (NUMBERING)	MXB201**	60
	MXB208**	60
	MXB221**	60,75,100
	MXB223**	60,75,100
	MXB235**	60
MULTIPLE TRANSMITTER BASE (MESSAGE AND NUMBERING)	MXB10	100
	MXB11	60
	MXB229**	75
MULTIPLE TRANSMITTER DISTRIBUTOR (MESSAGE)	MXD12	100
	MXD13	60,75
	MXD24	60,75,100
MULTIPLE TRANSMITTER DISTRIBUTOR (NUMBERING)	MXD17	60,75
	MXD25	60,75,100
MULTIPLE TRANSMITTING DISTRIBUTOR (NON TAPE SENSING)	MFD2	60
	MFD3	65
	MFD4	100
	MFD5	60
	MFD6	60
MULTIPLE TRANSMITTING DISTRIBUTOR BASE	MFDB1	60,65

NOTE: The double asterisk (**) following the Teletype code represents a two-letter suffix which denotes the color and texture of the paint finish.

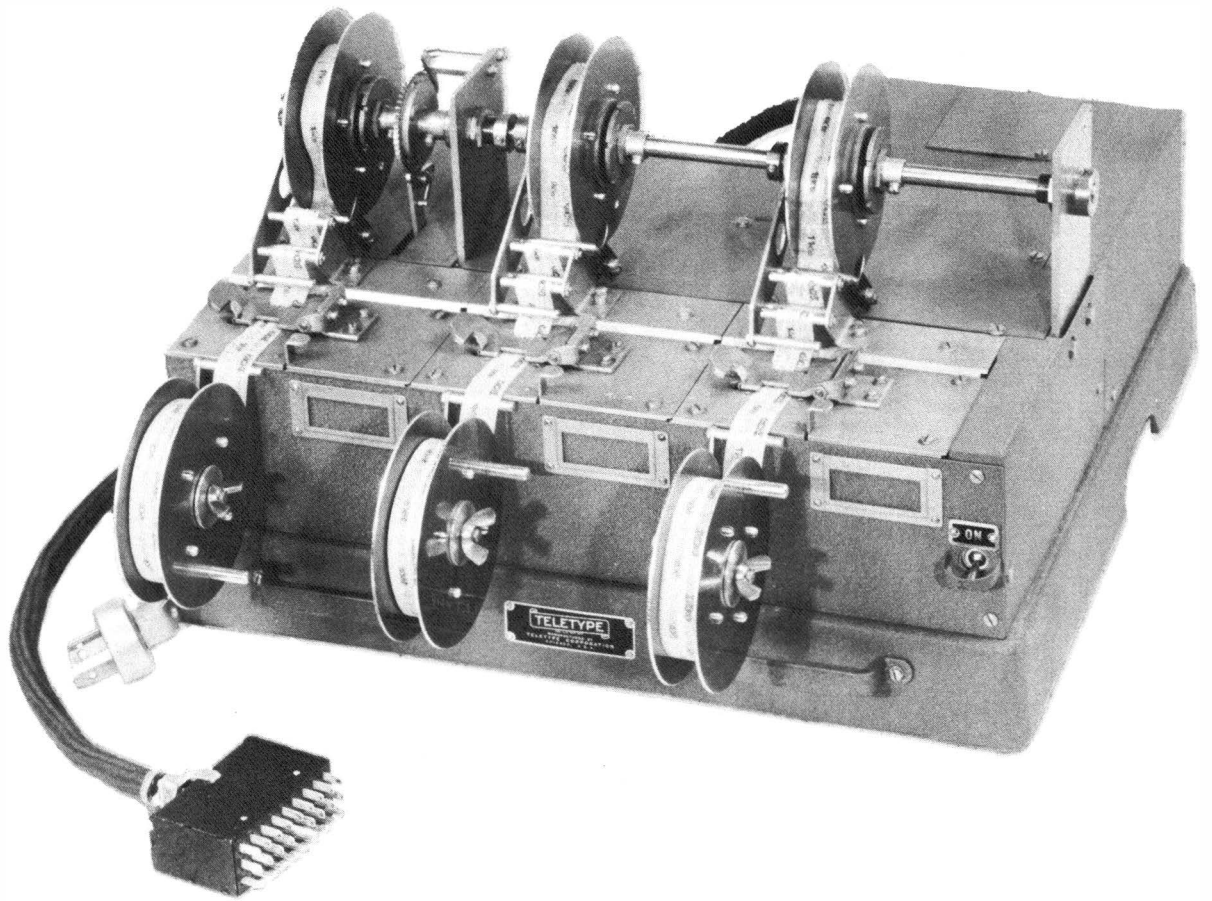


**COMPLETE 3-GANG
MULTIPLE TRANSMITTER DISTRIBUTOR SET
(MESSAGE)**
CONSISTING OF ONE MXB BASE AND THREE MXD TRANSMITTER DISTRIBUTORS



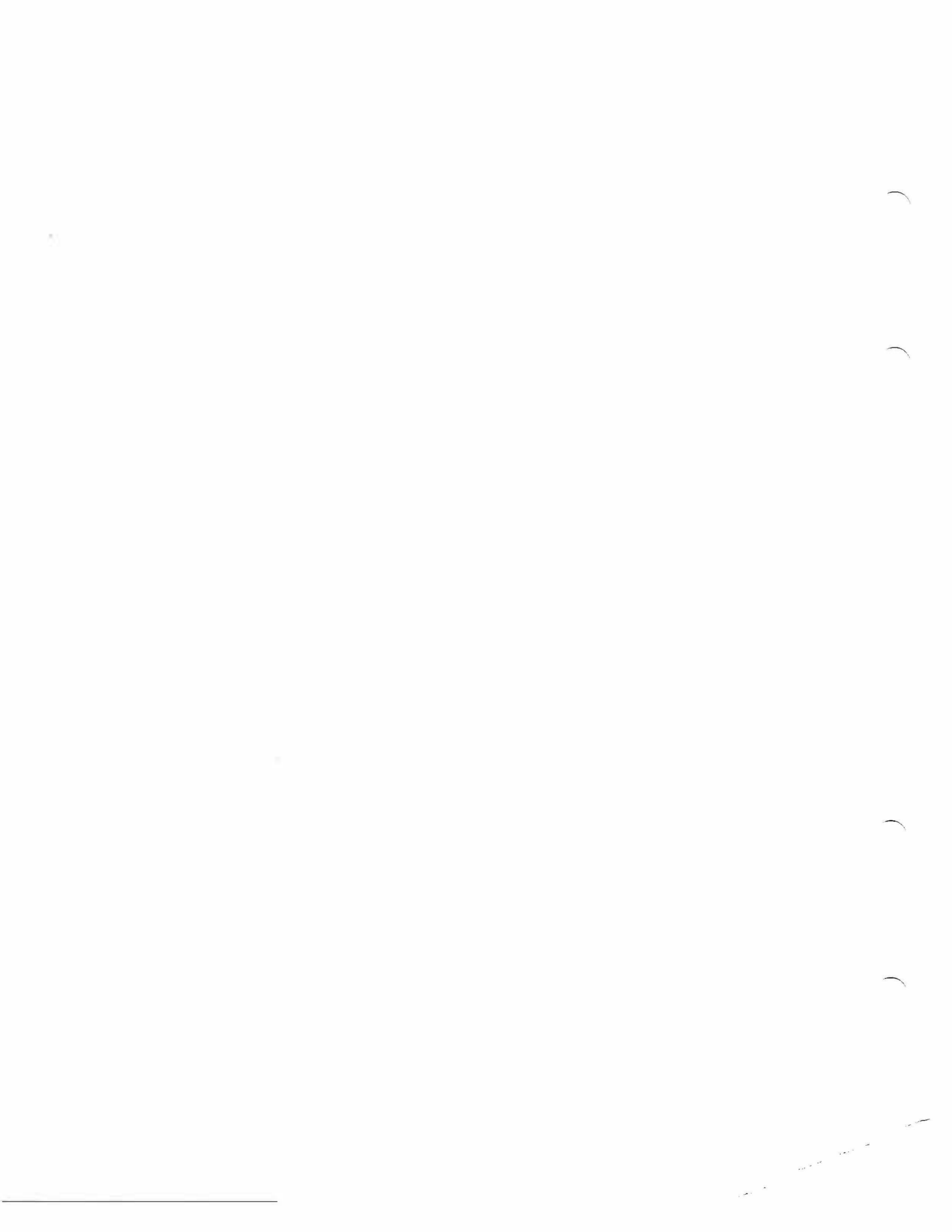
**COMPLETE 3-GANG
MULTIPLE TRANSMITTER DISTRIBUTOR SET
(MESSAGE)**
CONSISTING OF ONE MXB BASE, TWO MXD TRANSMITTER DISTRIBUTORS,
AND ONE MFD TRANSMITTING DISTRIBUTOR

1137B

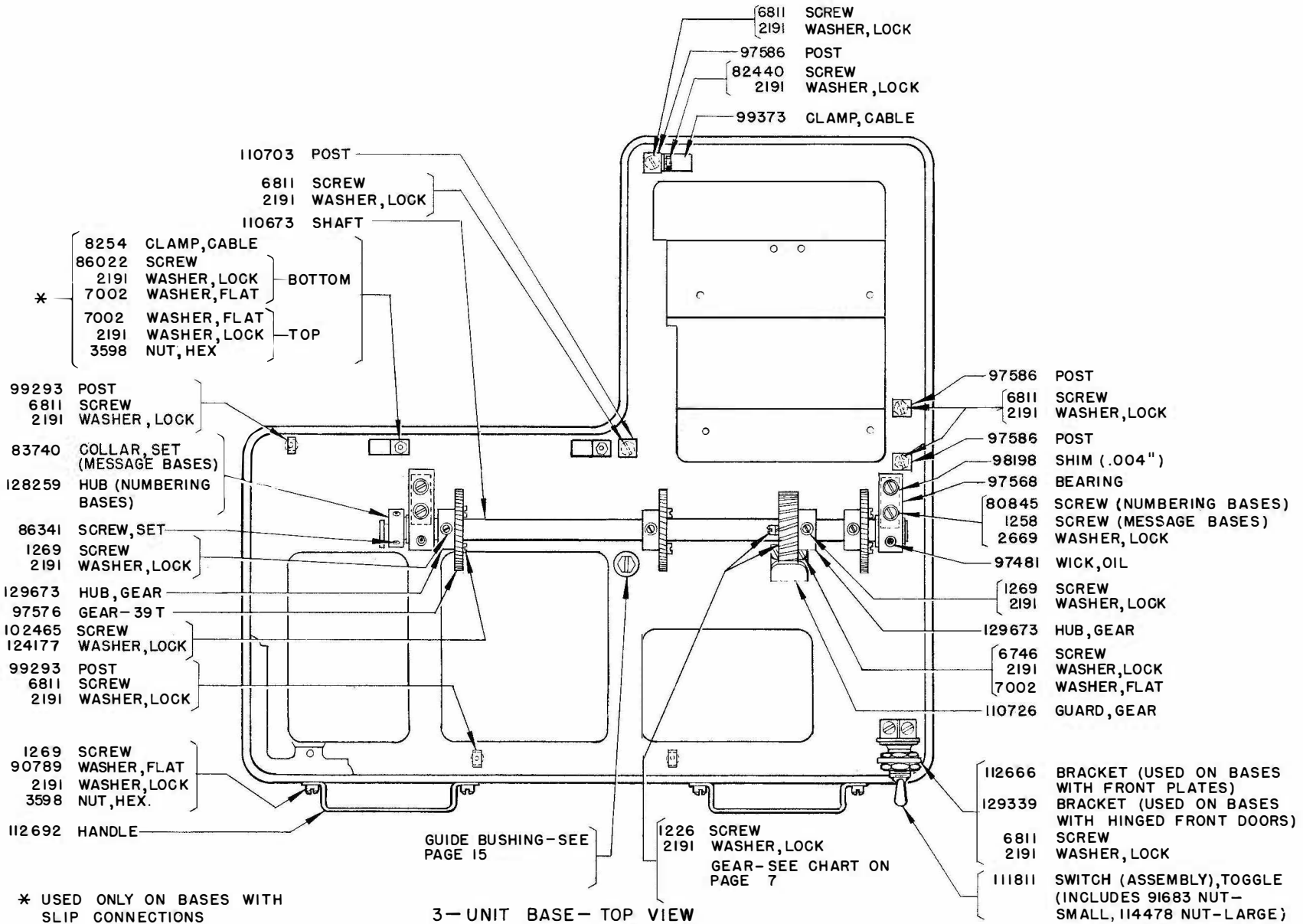


**COMPLETE 3-GANG
MULTIPLE TRANSMITTER DISTRIBUTOR SET
(NUMBERING)**

CONSISTING OF ONE MXB BASE AND THREE MXD TRANSMITTER DISTRIBUTORS



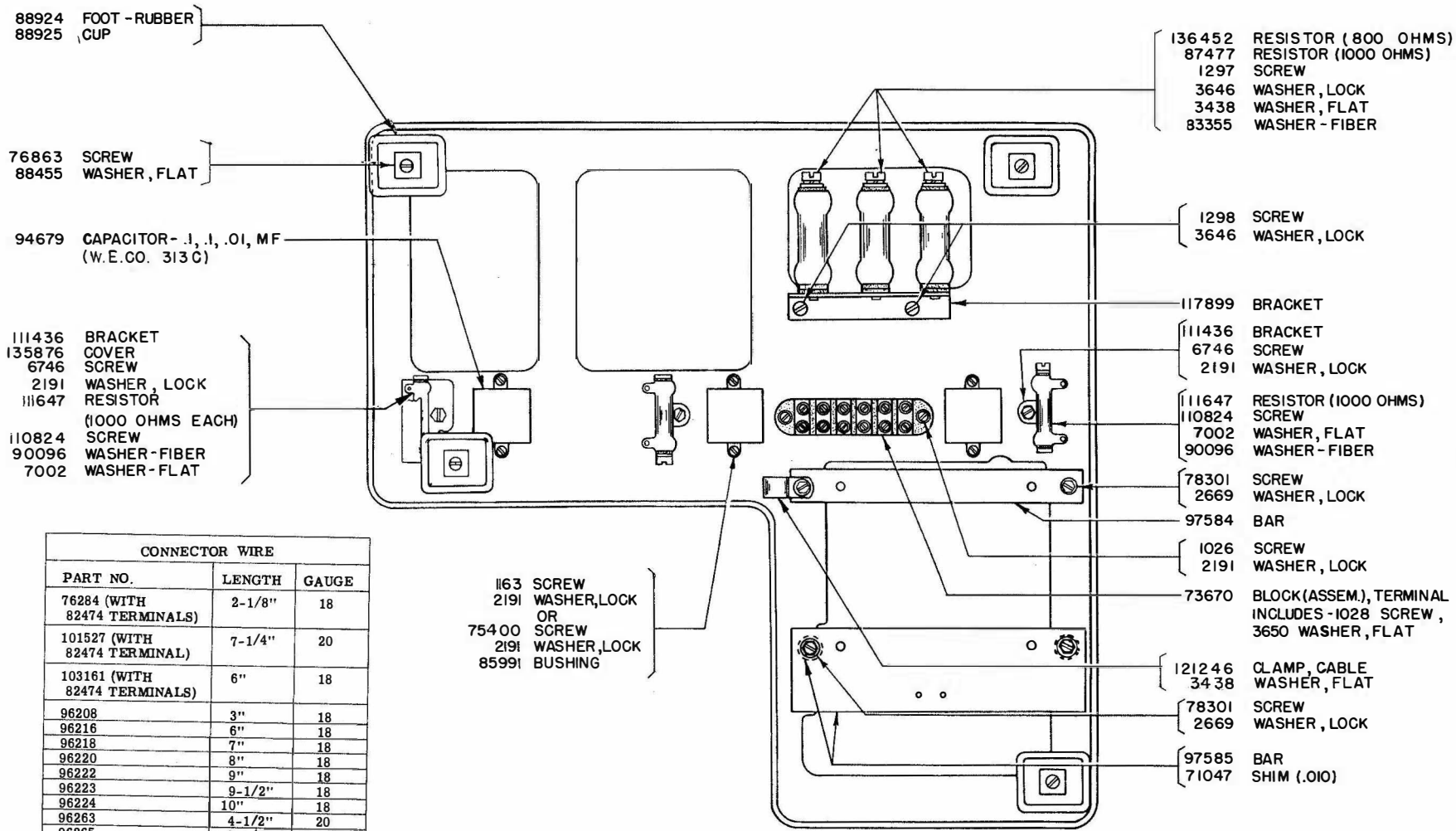
ORIGINAL



1137B

MXB

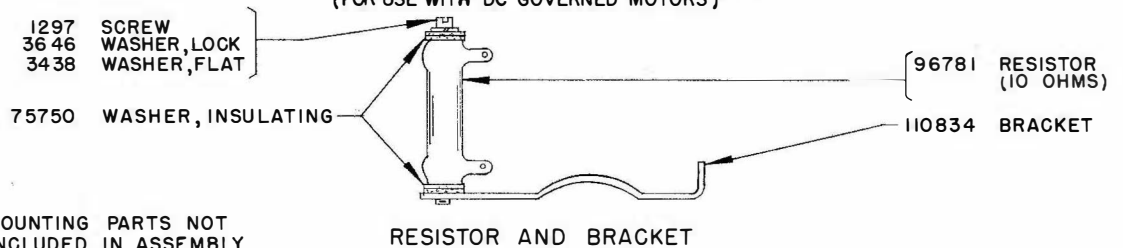
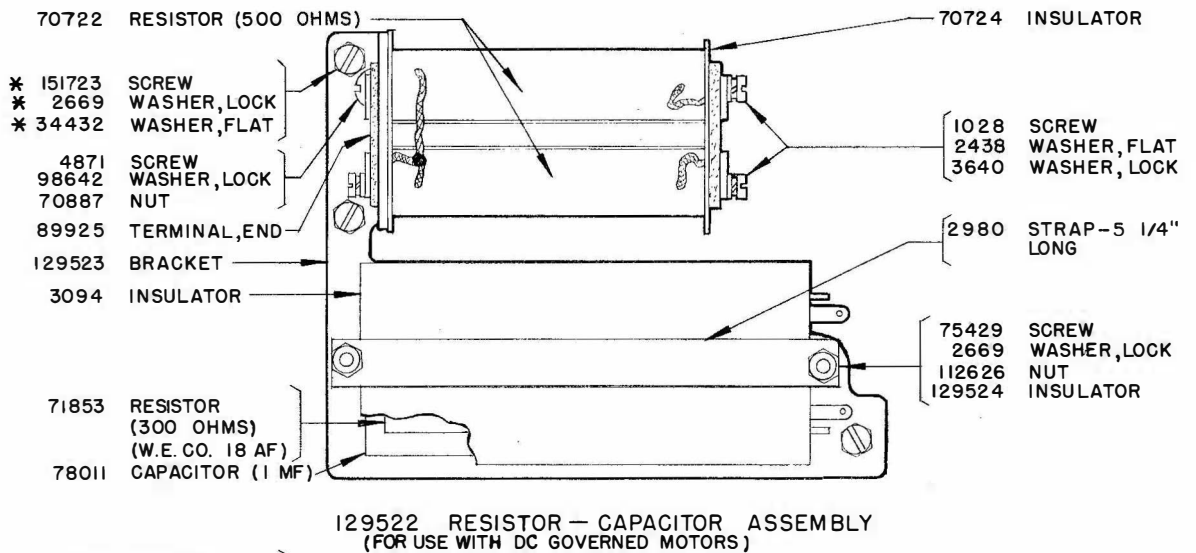
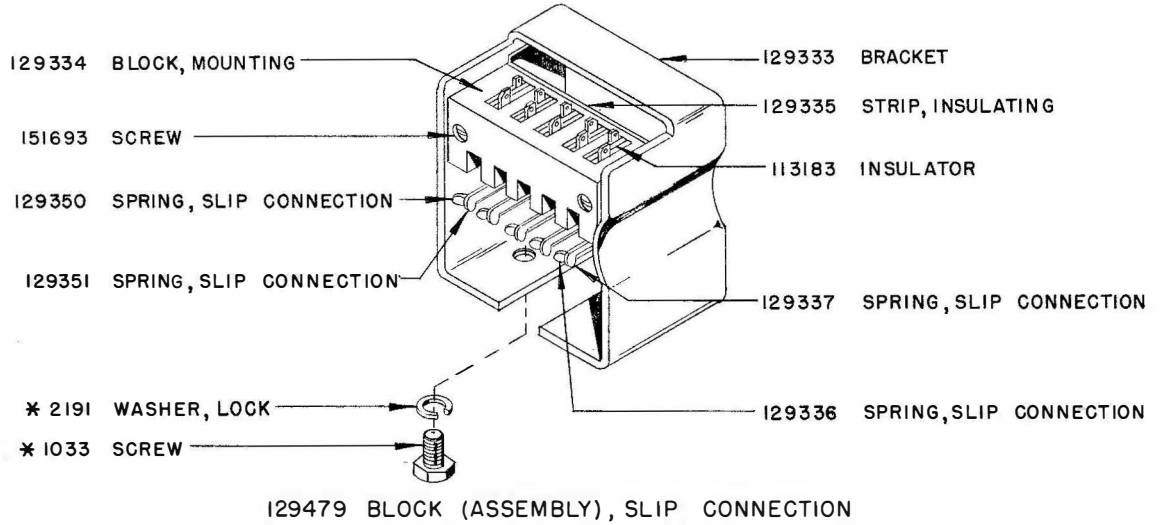
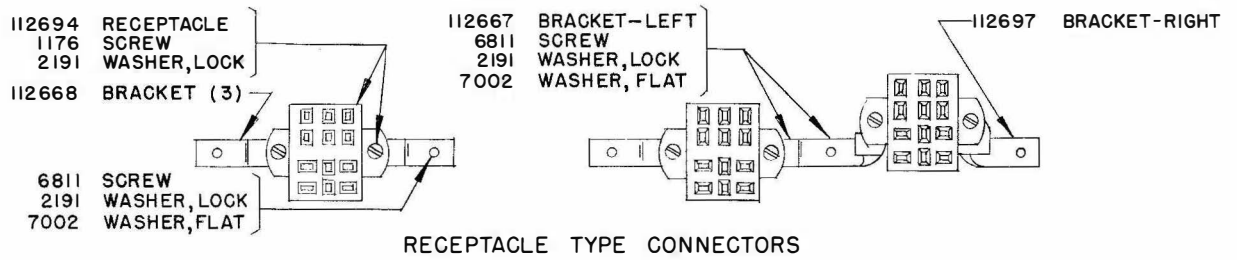
* USED ONLY ON BASES WITH
SLIP CONNECTIONS



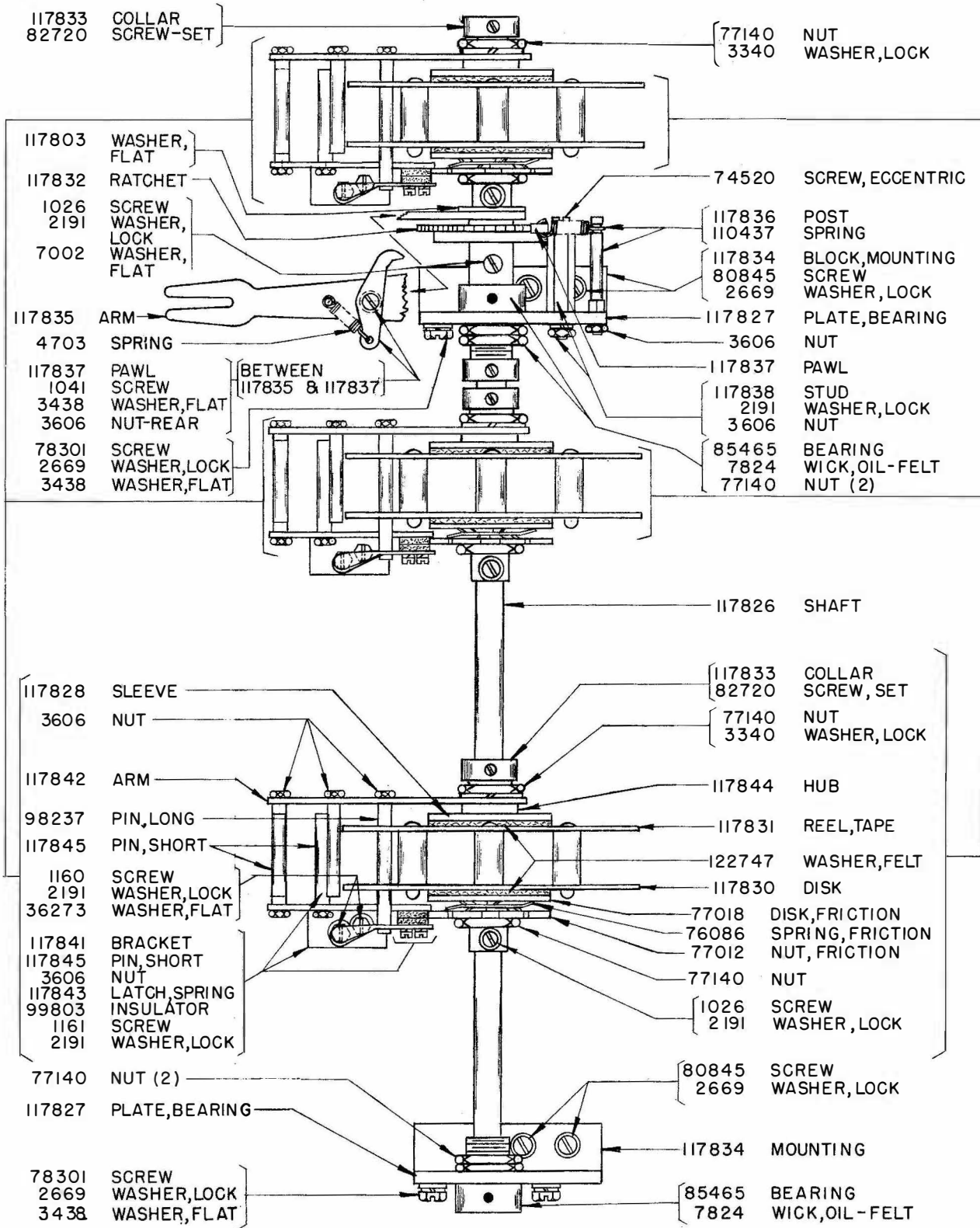
11378

3 - UNIT BASE - BOTTOM VIEW

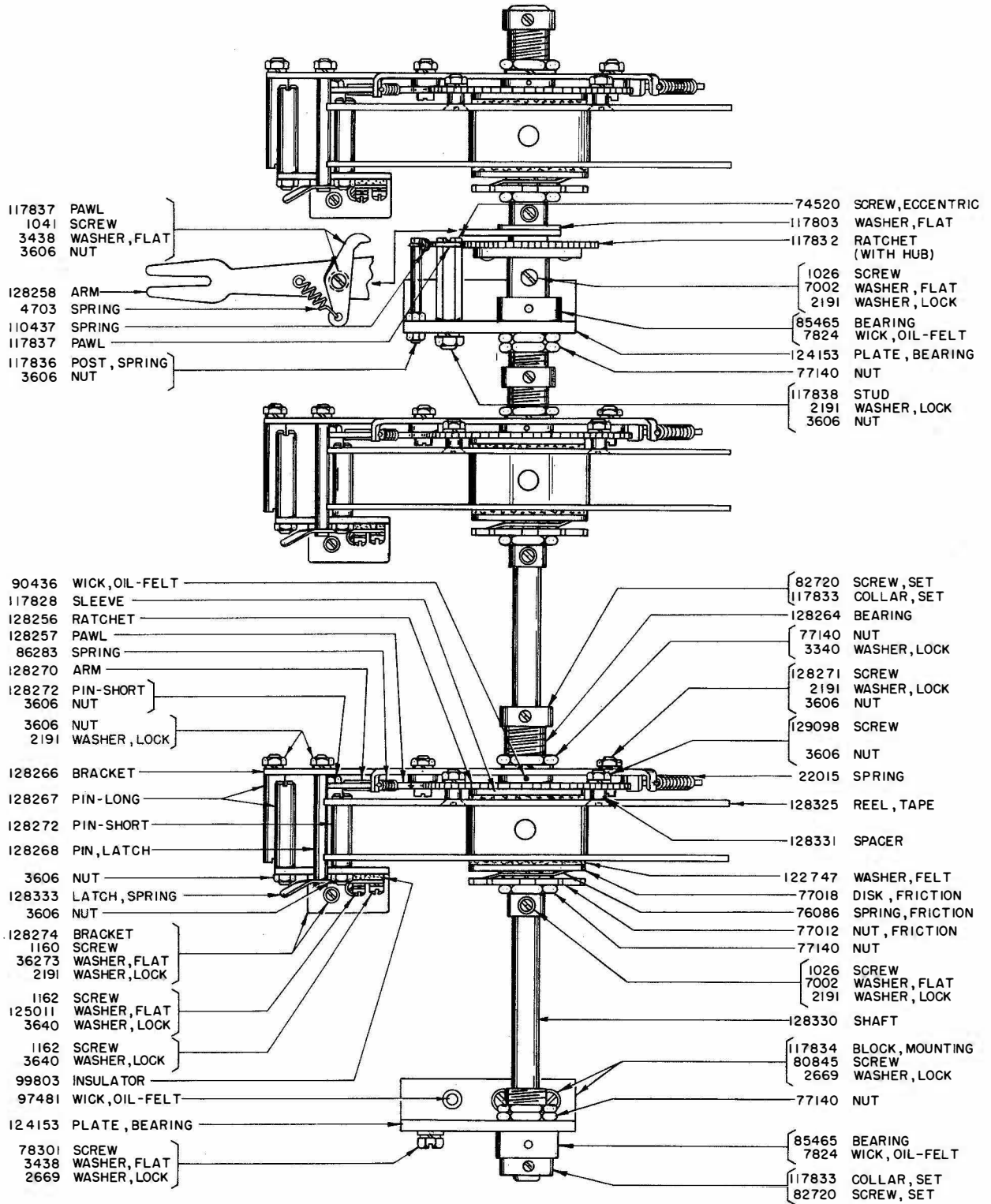
ORIGINAL



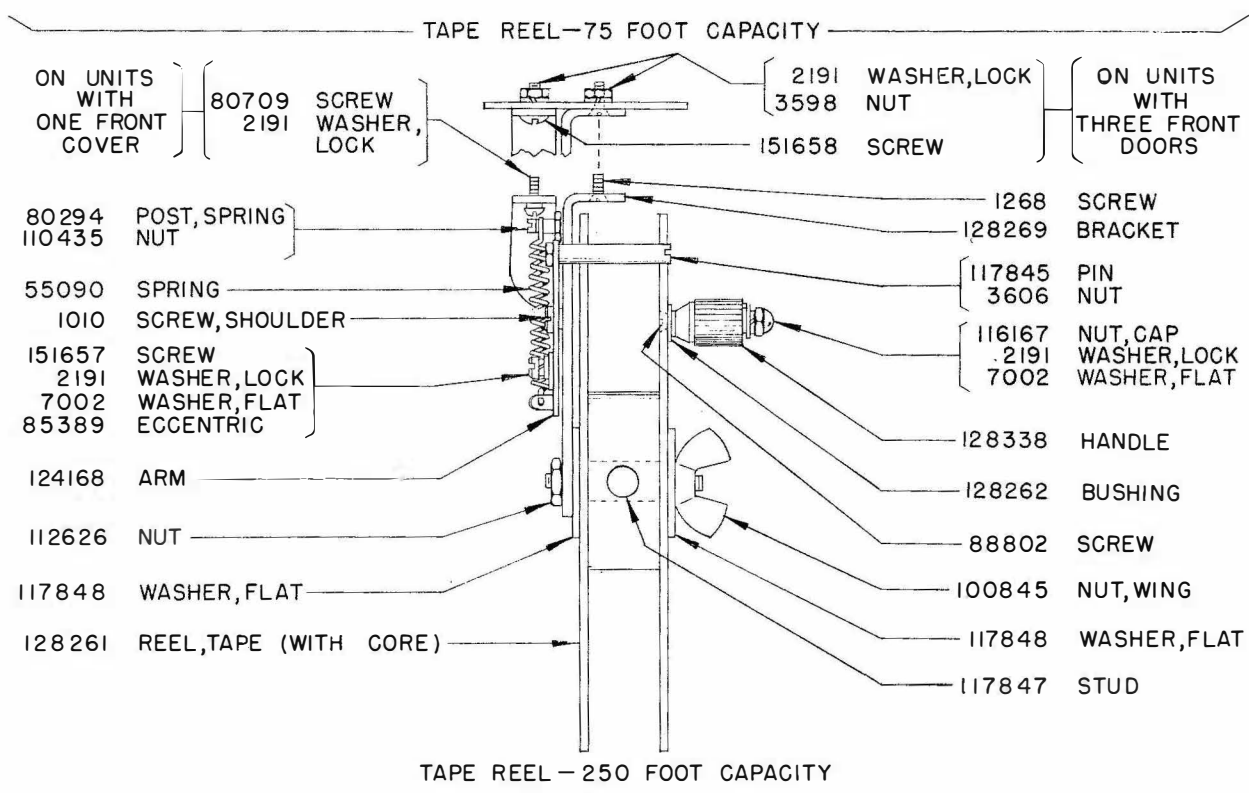
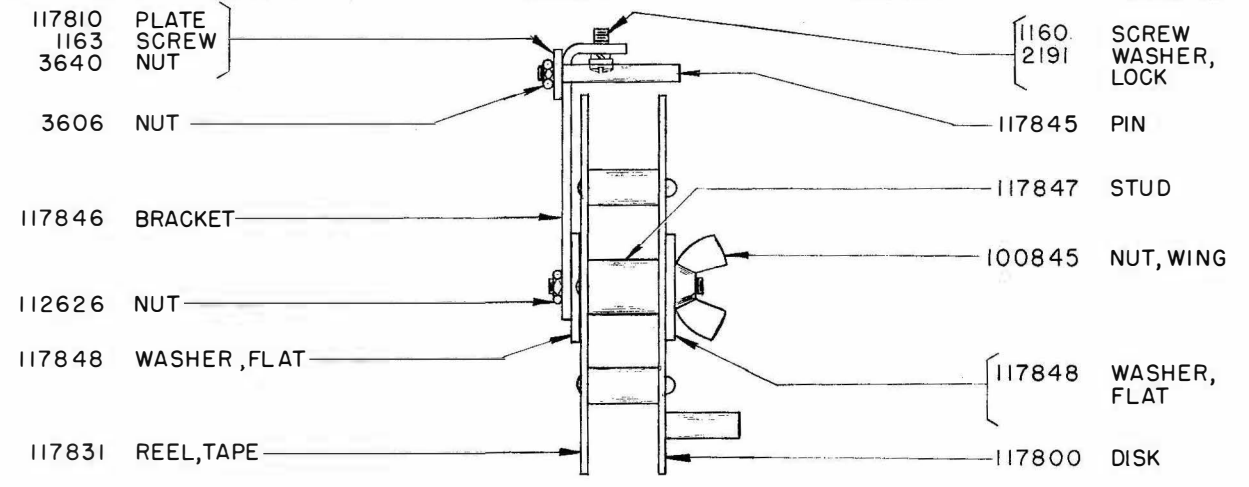
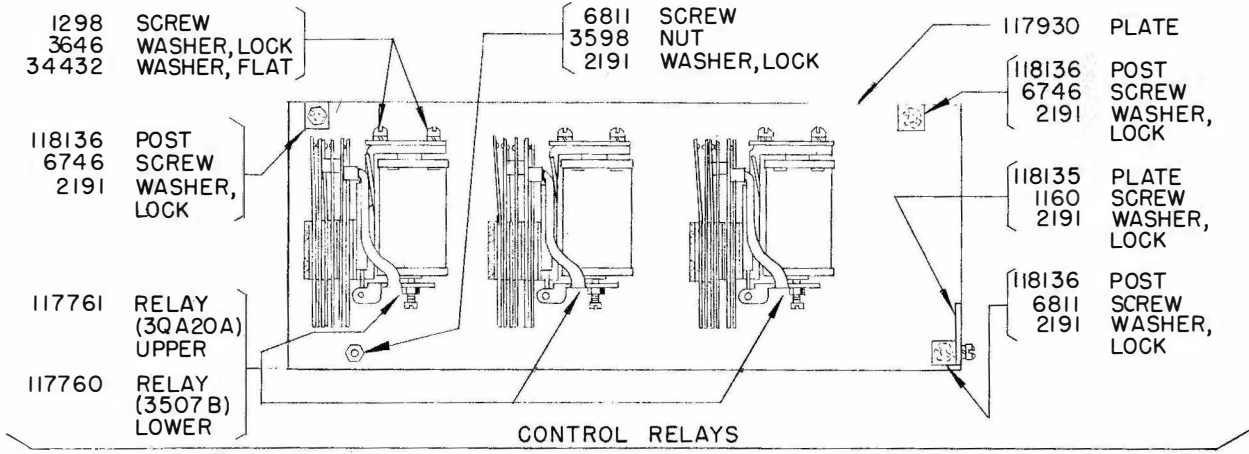
* MOUNTING PARTS NOT INCLUDED IN ASSEMBLY

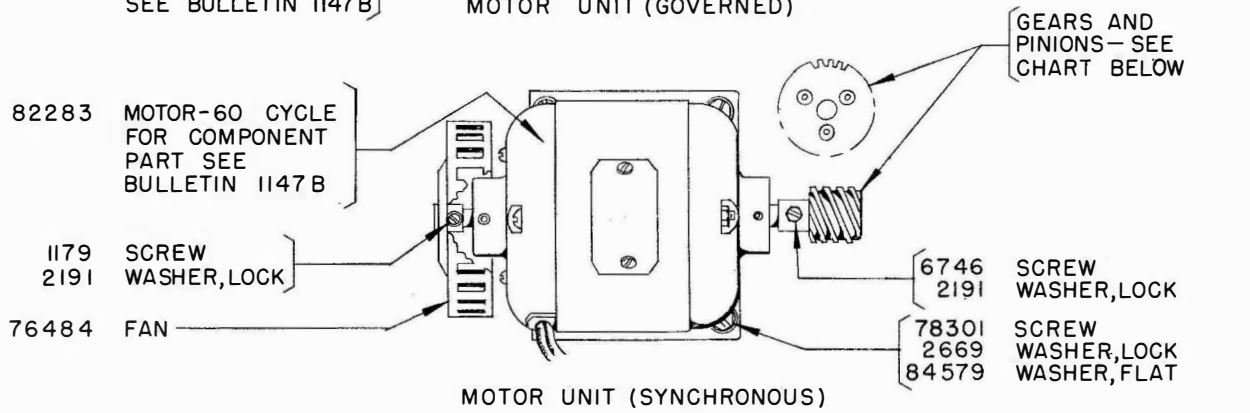
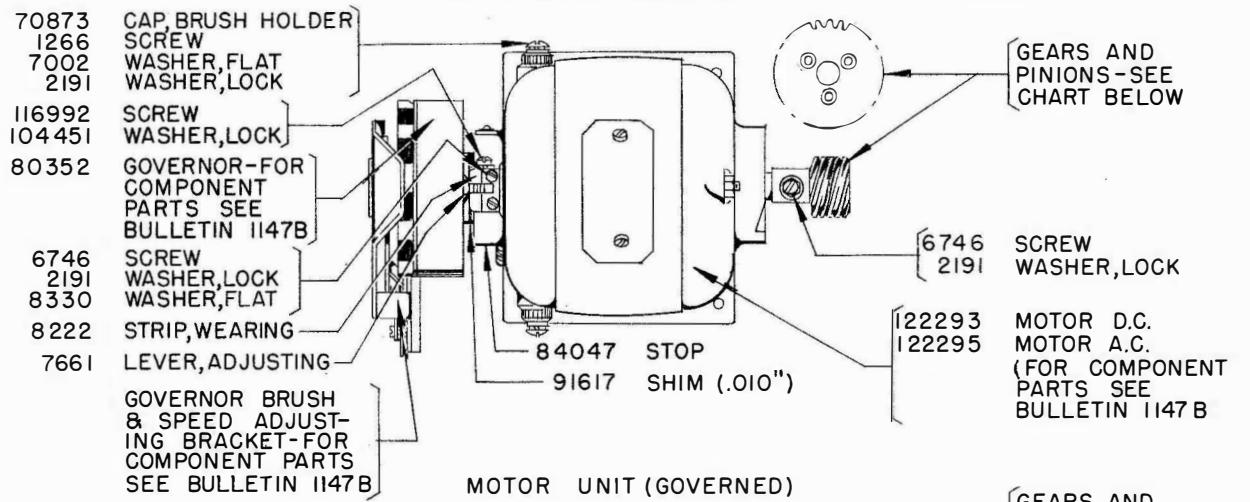
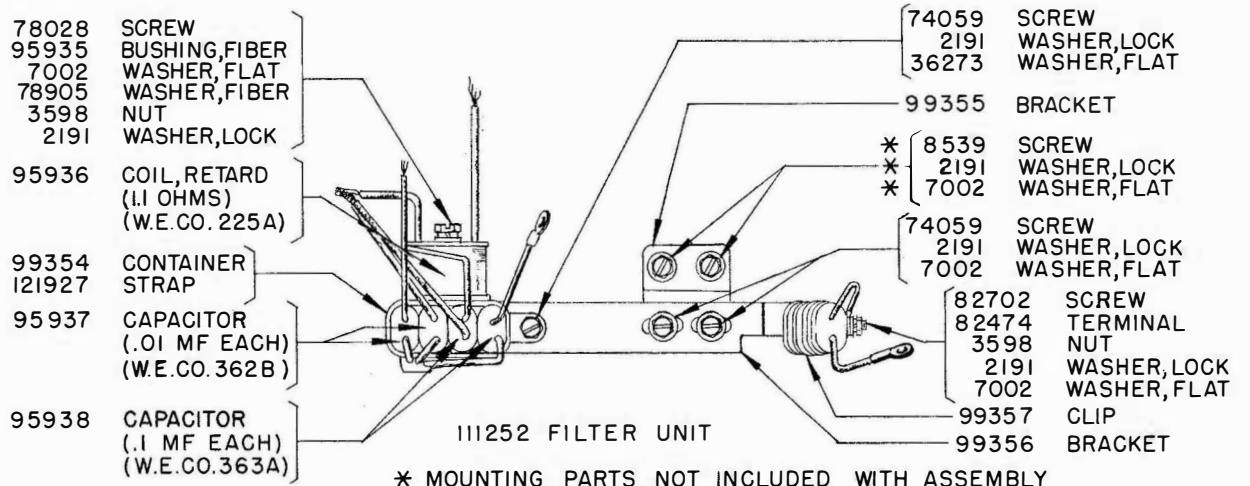


TAPE WINDER ASSEMBLY-75 FOOT CAPACITY

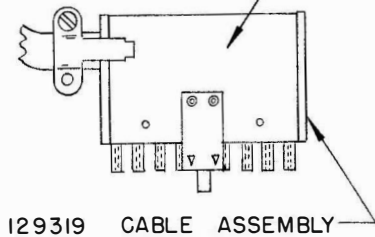
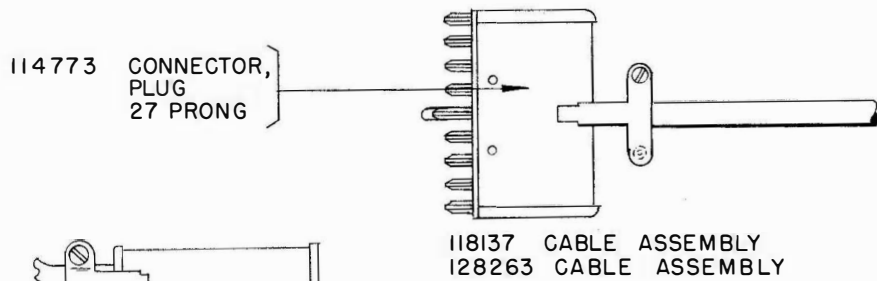
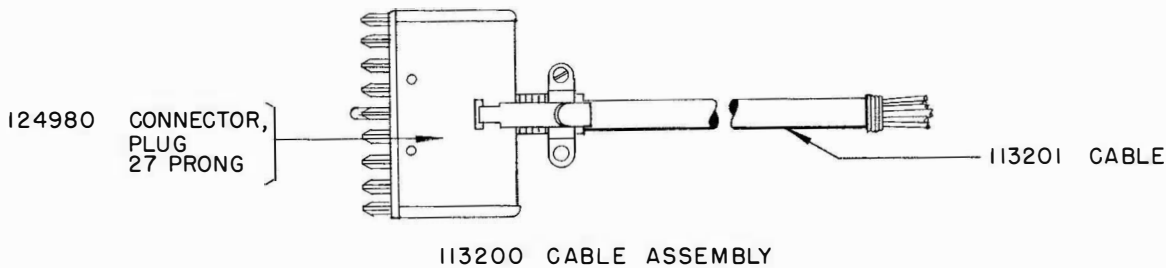
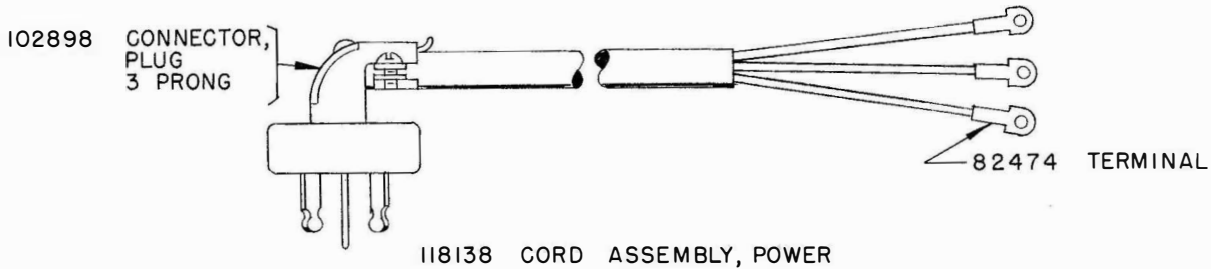
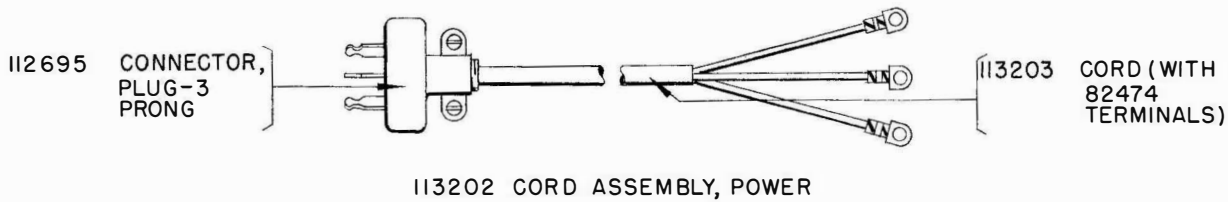


TAPE WINDER ASSEMBLY-250 FOOT CAPACITY





PINION AND GEAR CHART								
WPM	SYNCHRONOUS MOTOR				GOVERNED MOTOR			
	PINION		GEAR		PINION		GEAR	
	PART NO.	TEETH	PART NO.	TEETH	PART NO.	TEETH	PART NO.	TEETH
60	112691	11	112690	50	110650	10	110651	53
75	112689	11	112688	40	122041	8	122042	34
100	112687	14	112686	39	111264	12	111265	39



MISCELLANEOUS CABLES

110978 - GOVERNED MOTOR CABLE	-	2508, 2837, 2838WD
110979 - GOVERNOR CIRCUIT CABLE - AC	-	2508, 2837, 2838WD
116706 - GOVERNOR CIRCUIT CABLE - DC	-	2385WD
113452 - SWITCH CABLE	-	2385, 2508, 2517, 3026WD
129317 - SWITCH CABLE	-	2837, 2838WD
118093 - RESISTOR CABLE	-	2508, 2517, 3026WD
118366 - RELAY CABLE	-	2508WD

WIRING DIAGRAMS

POWER CORDS

113202 - 2385WD
118138 - 2508, 2517, 2837, 2838, 3026WD

SIGNAL LINE CABLES

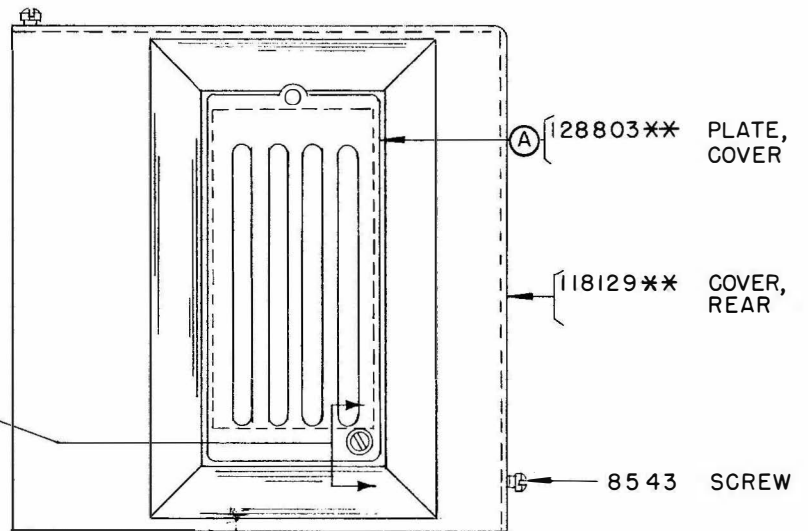
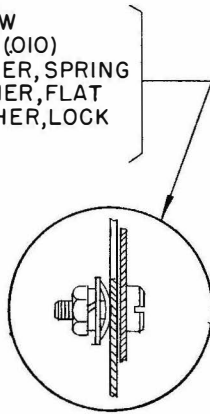
113200 - 2385WD
118137 - 2508, 2517WD
128263 - 3026WD
129318 - 2837WD
129319 - 2838WD

POWER CORDS AND CABLE ASSEMBLIES FOR 3-UNIT BASES

TELETYPE CODE - MXB	COVERS						
	FRONT	LEFT	REAR	LEFT REAR	RIGHT	TOP	REAR ASSEMBLY
10, 11, 12, 17, 207, 227	119543**	118447**	—	118448**	118445**	110952	118130**
201, 208, 235	118133**	118131**	—	—	118134**	118132** & 118436	118130**
202	118446**	118447**	—	118448**	118445**	110952	118130**
220, 222	129346**	129342**	129341**	118448**	129343**	110952	118130**
221, 223	129347**	129342**	129341**	118448**	129344**	128336** & 118436	118130**
229	128337**	118447**	—	118448**	118445**	135718** & 135719	118130**

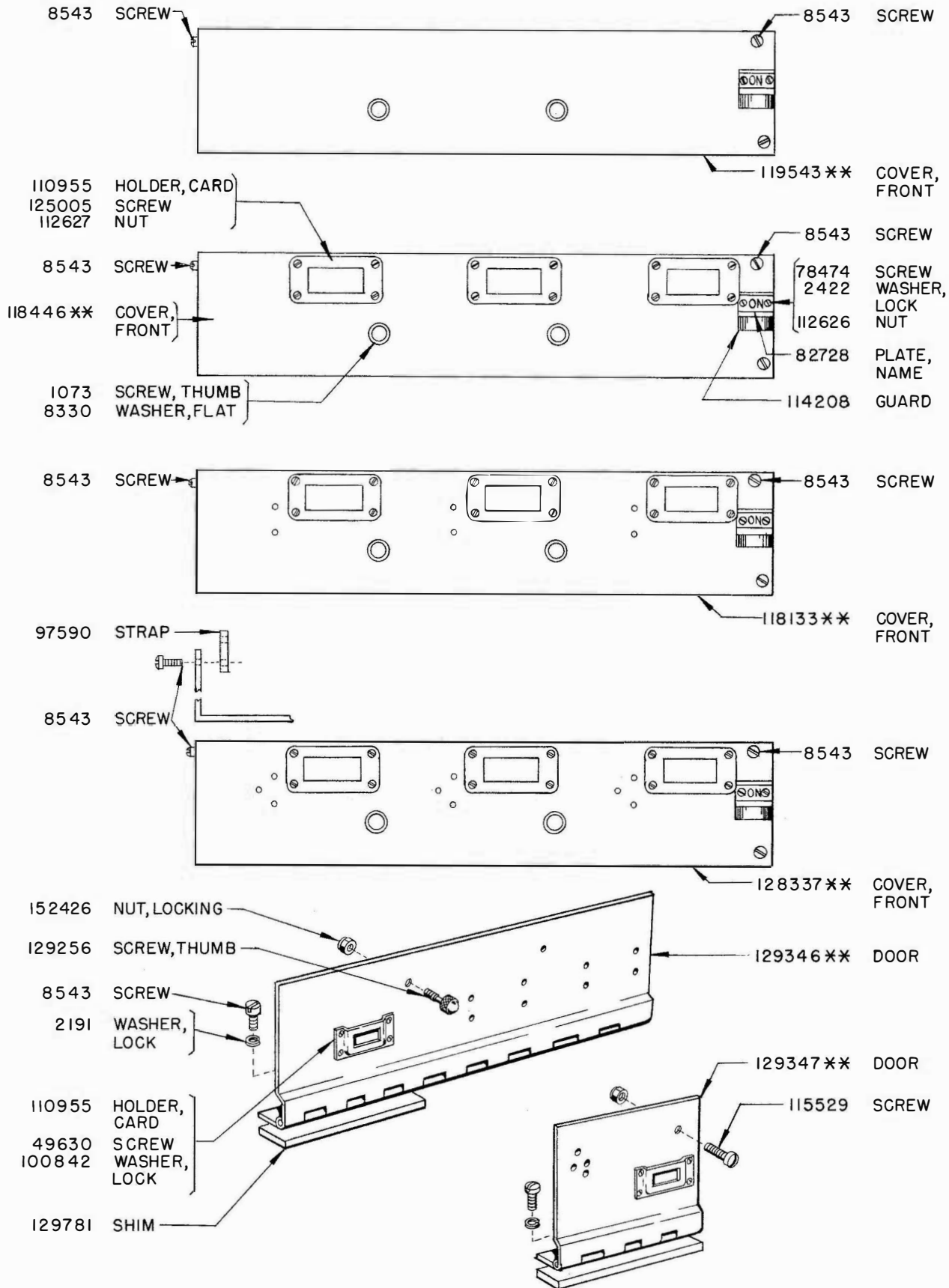
MISCELLANEOUS - 119659** CARDHOLDER ASSEMBLY

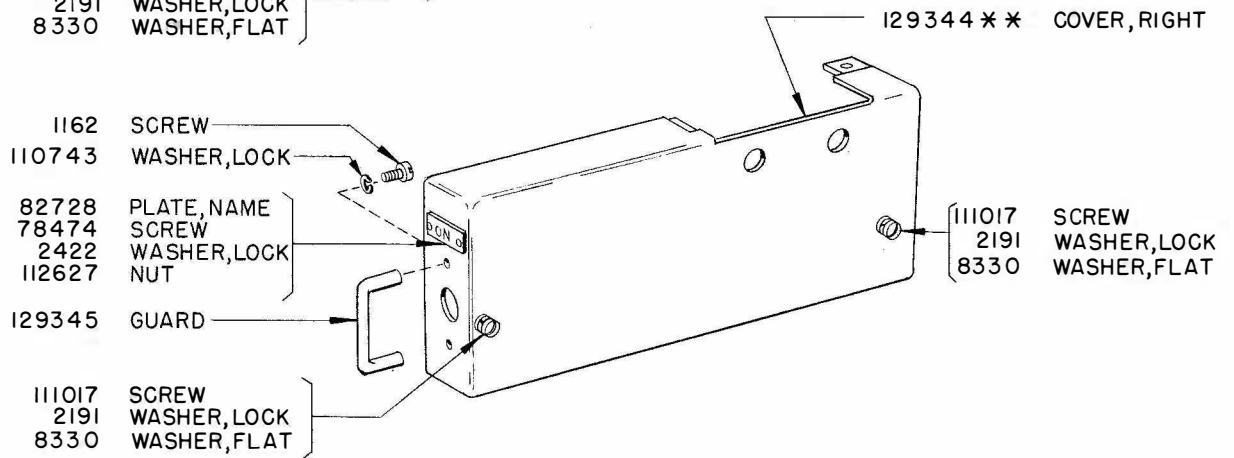
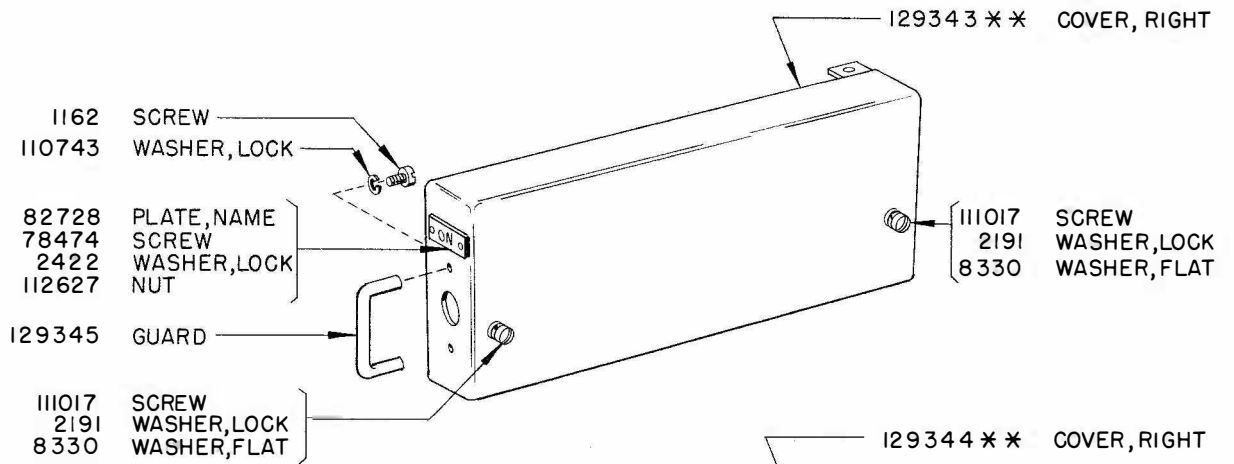
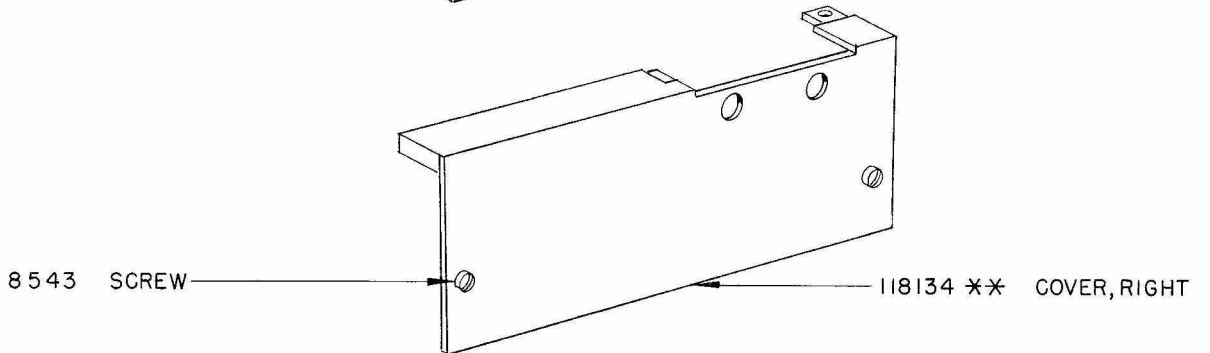
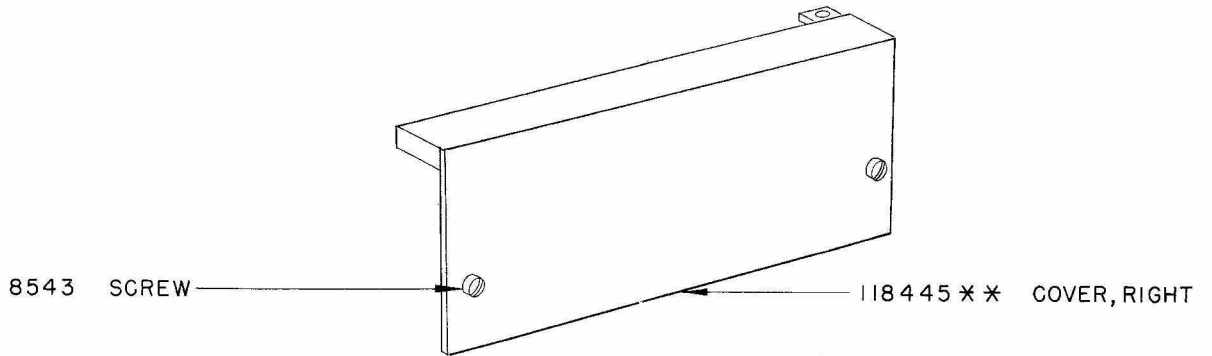
- 112621 SCREW
- 125789 SHIM (OIO)
- 83561 WASHER, SPRING
- 125802 WASHER, FLAT
- 3640 WASHER, LOCK
- 3599 NUT

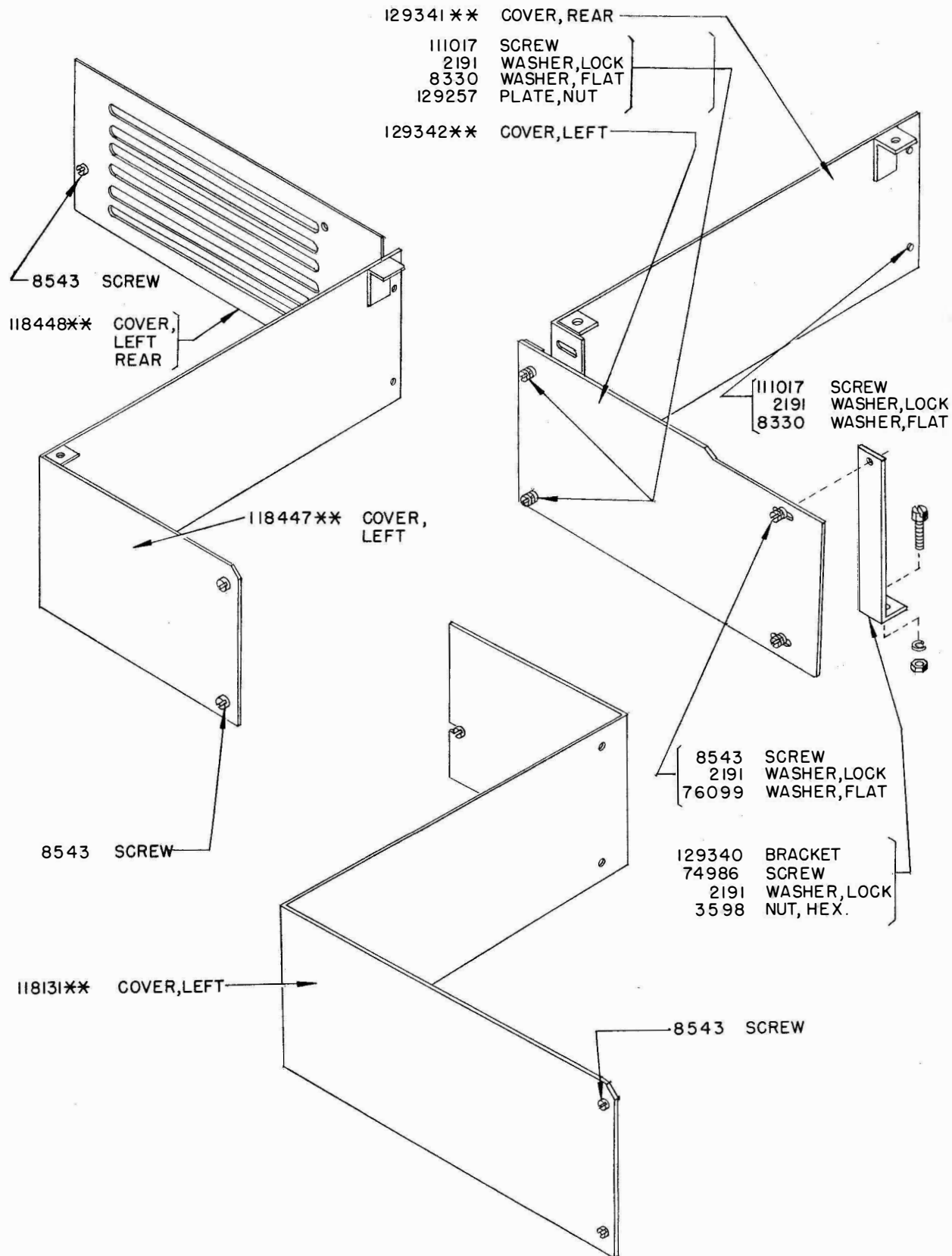


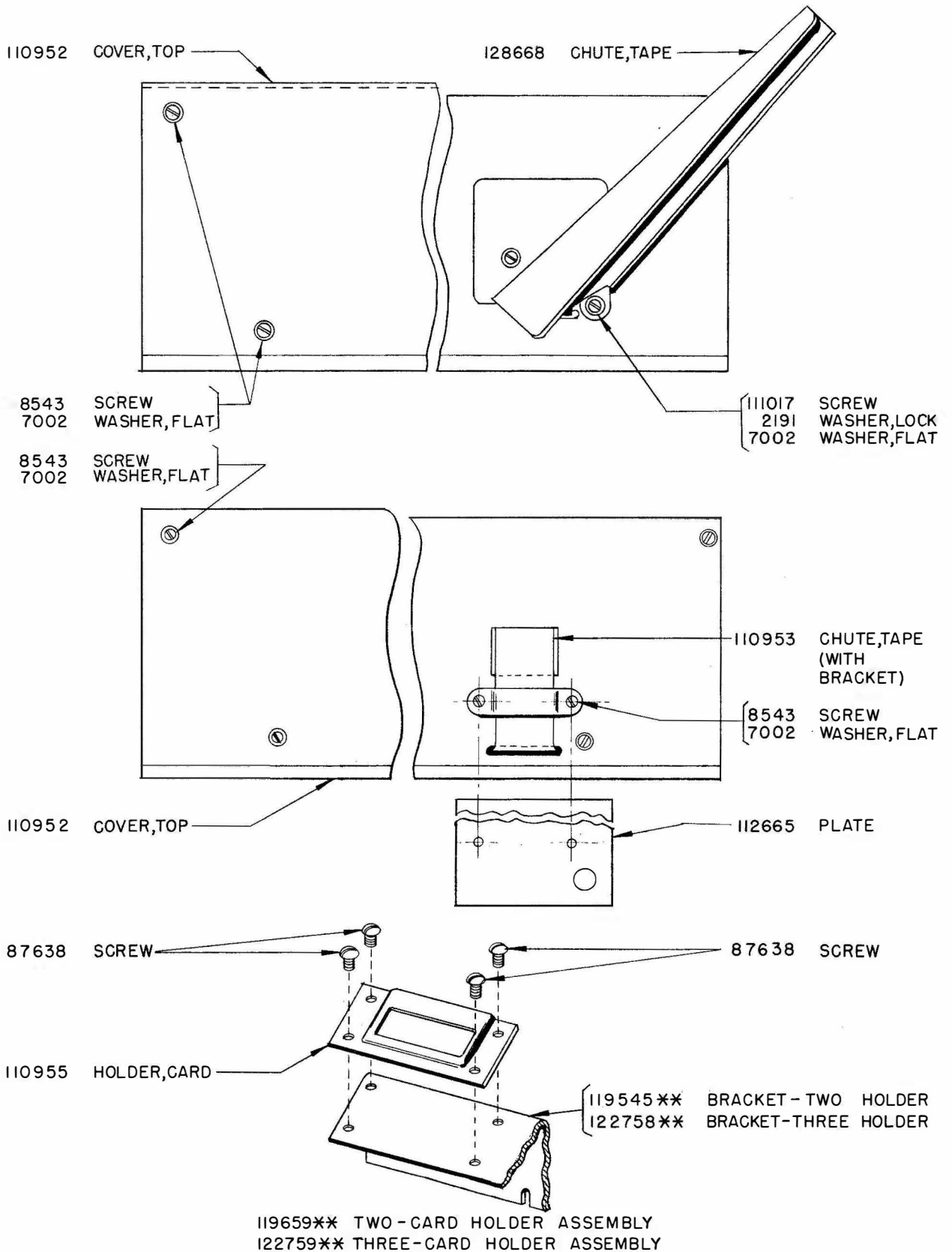
(A) SEE NOTE 1 ON PAGE 27

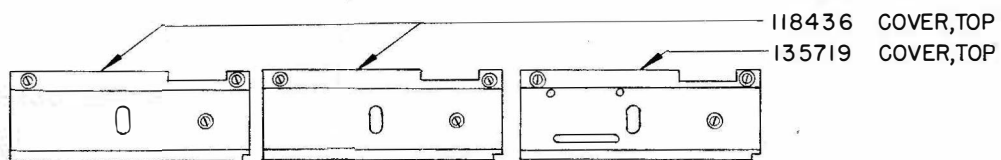
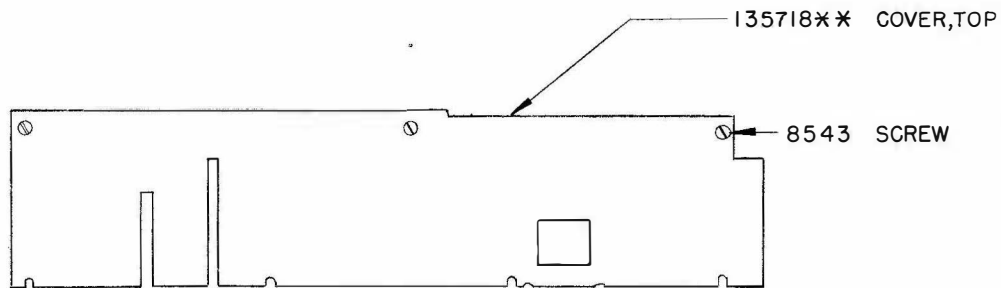
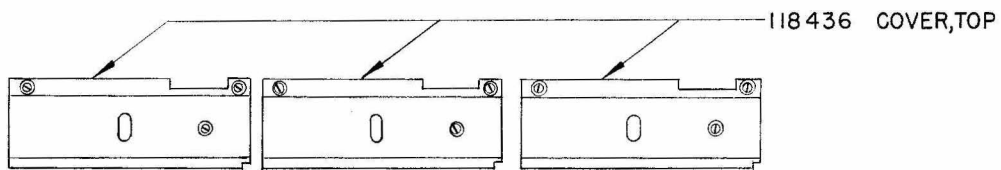
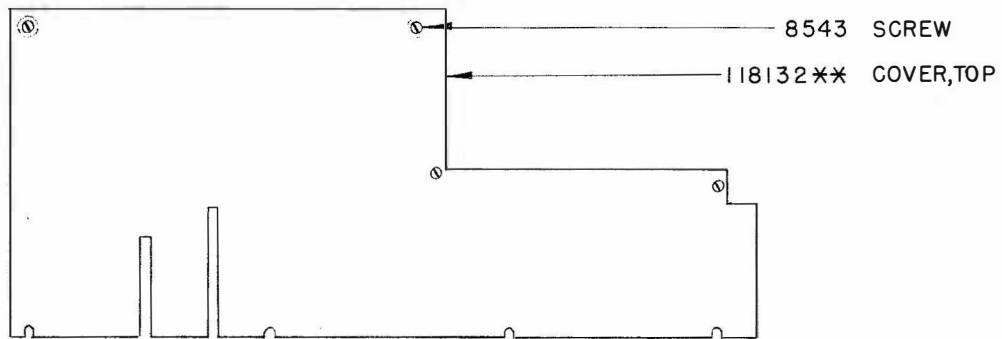
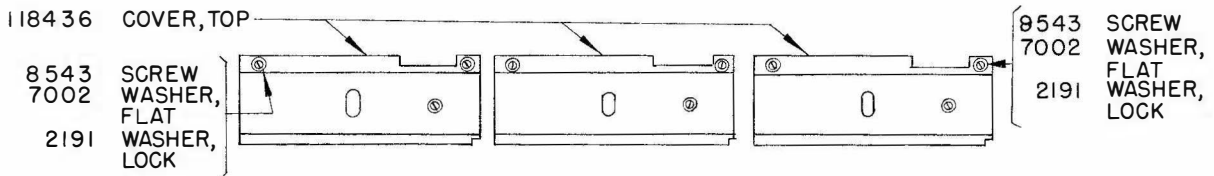
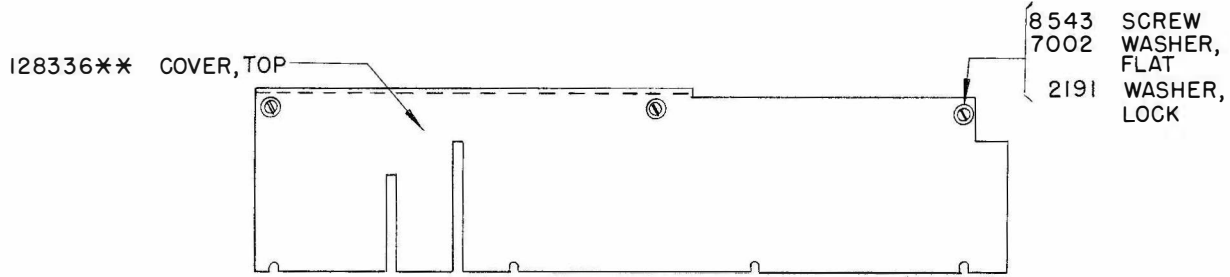
118130 ** COVER ASSEMBLY-REAR

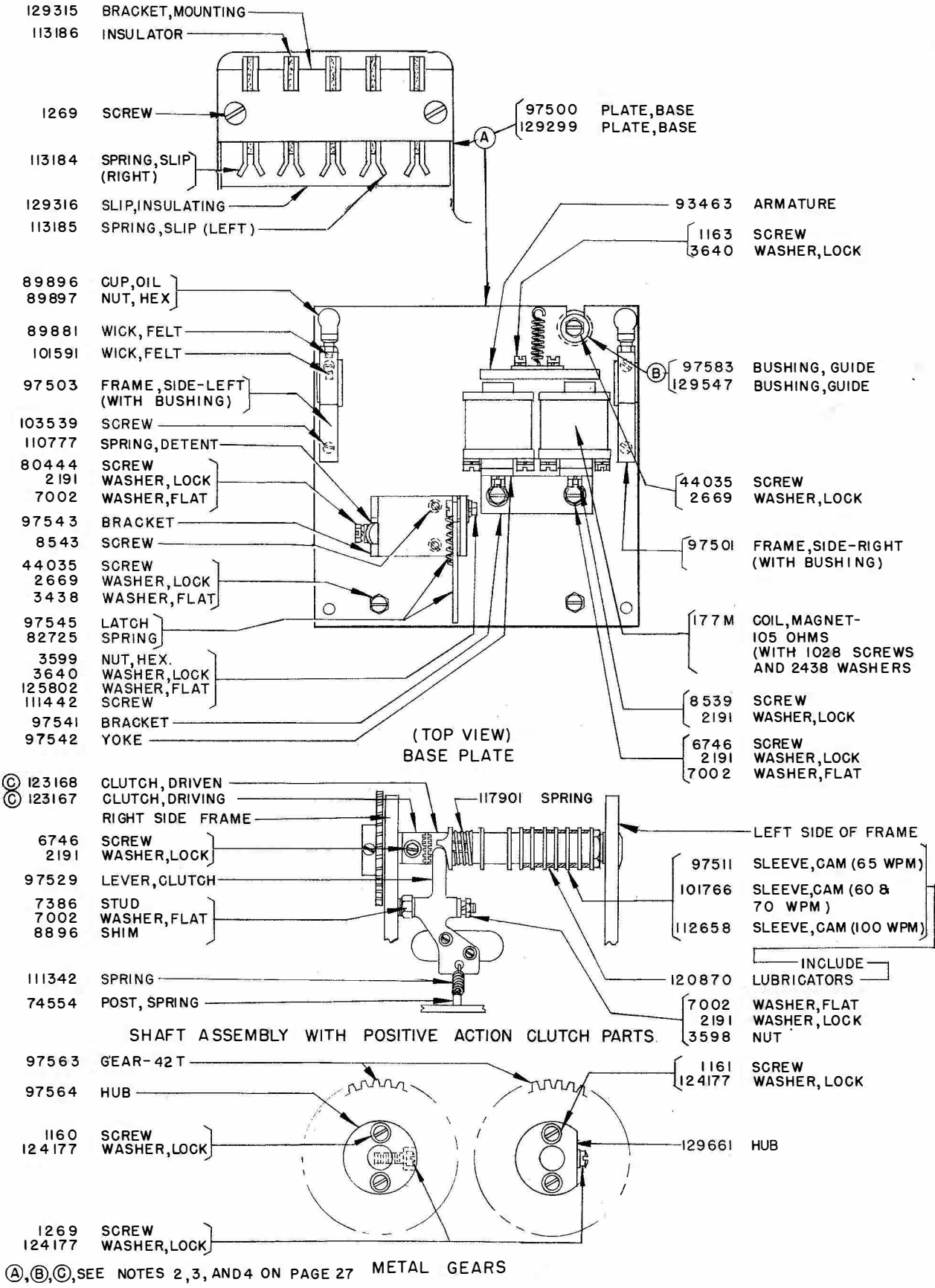


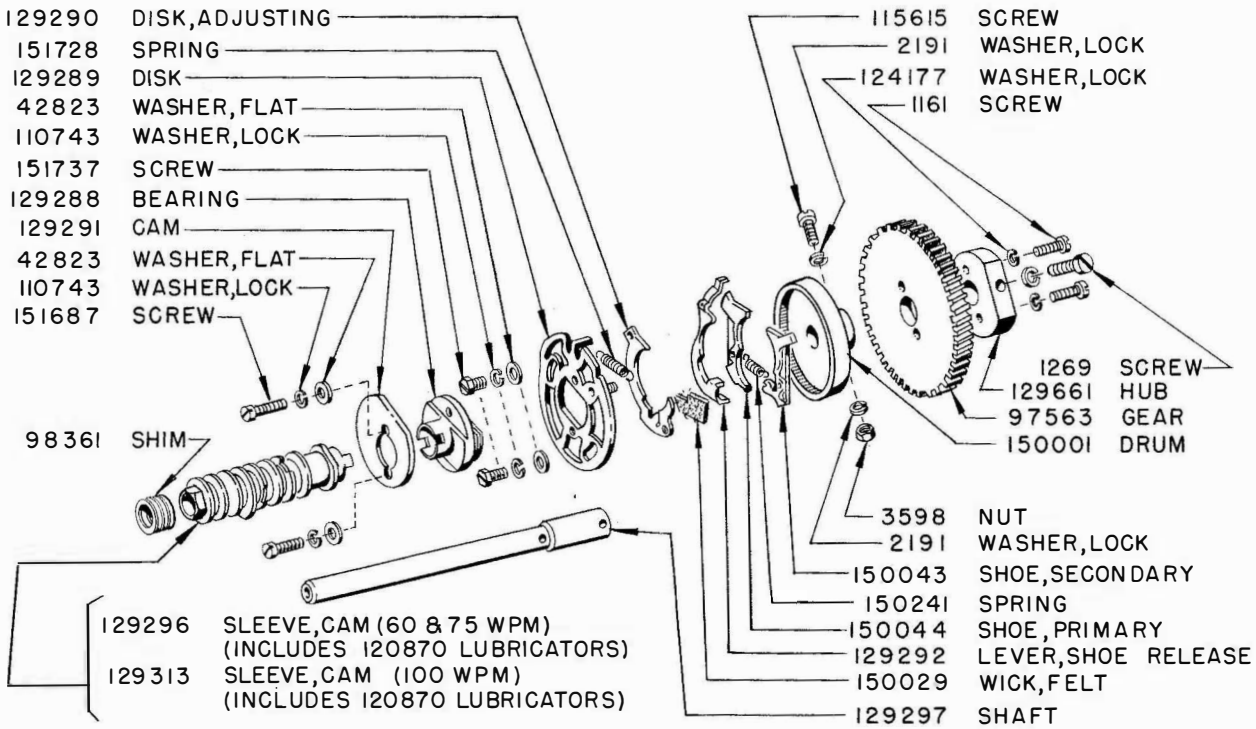
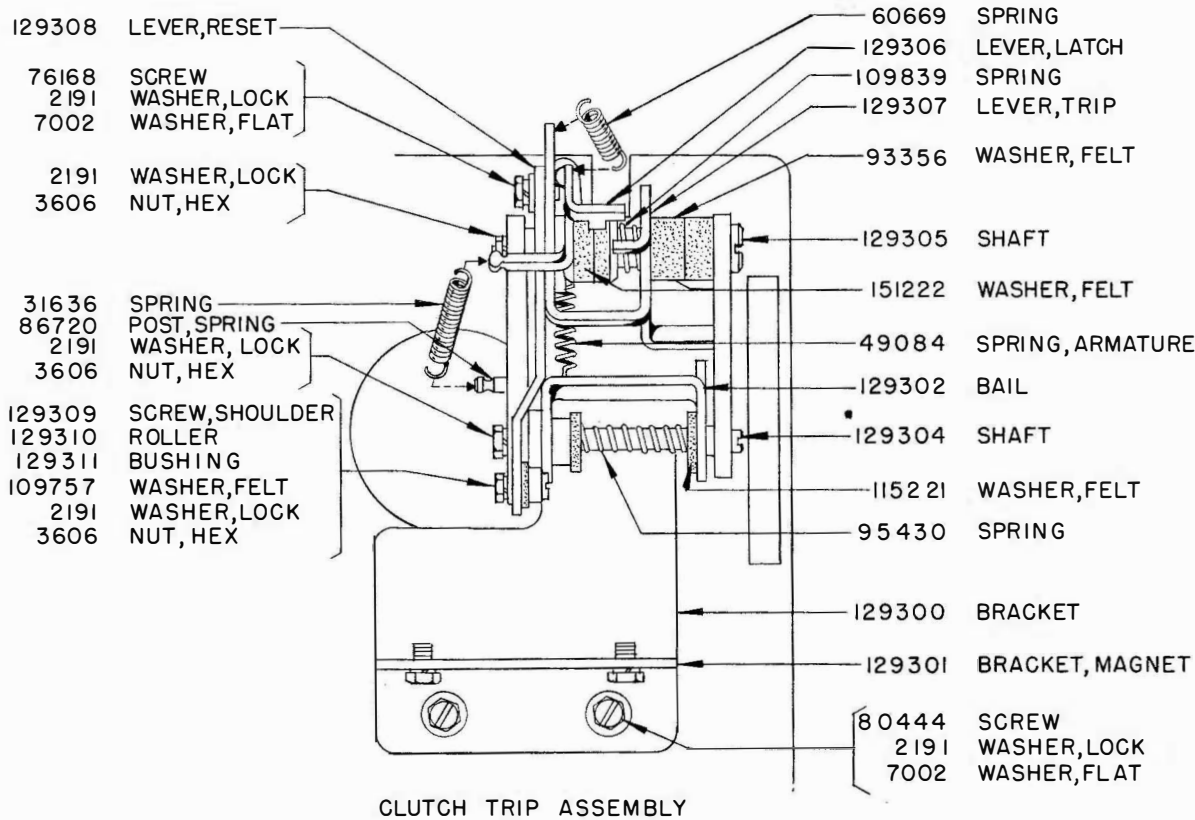


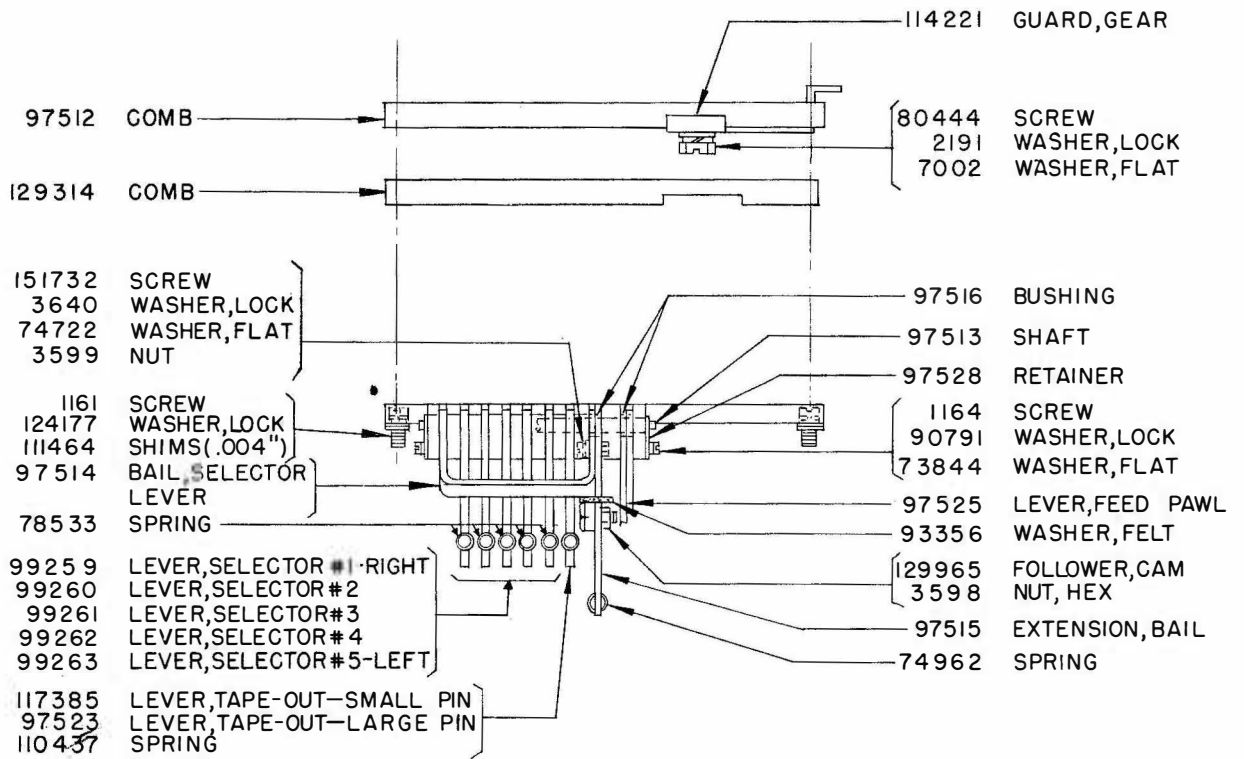




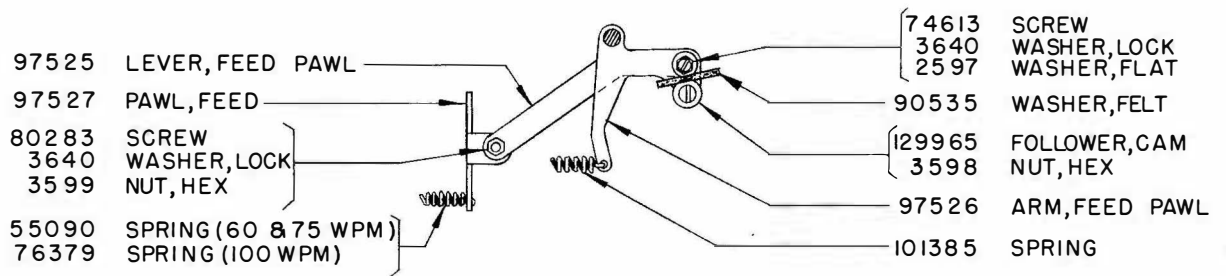




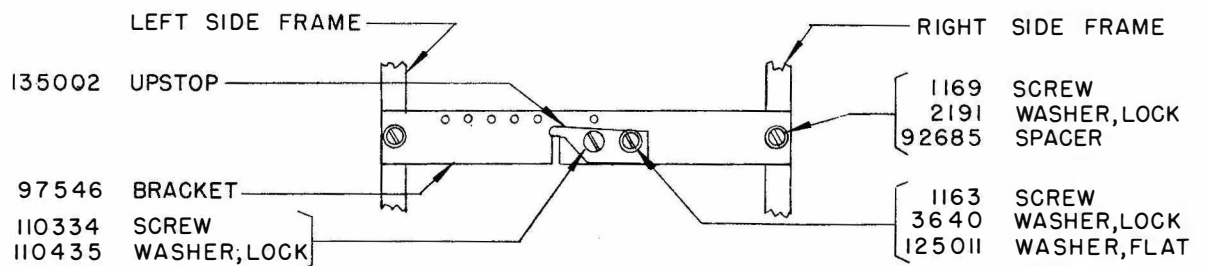




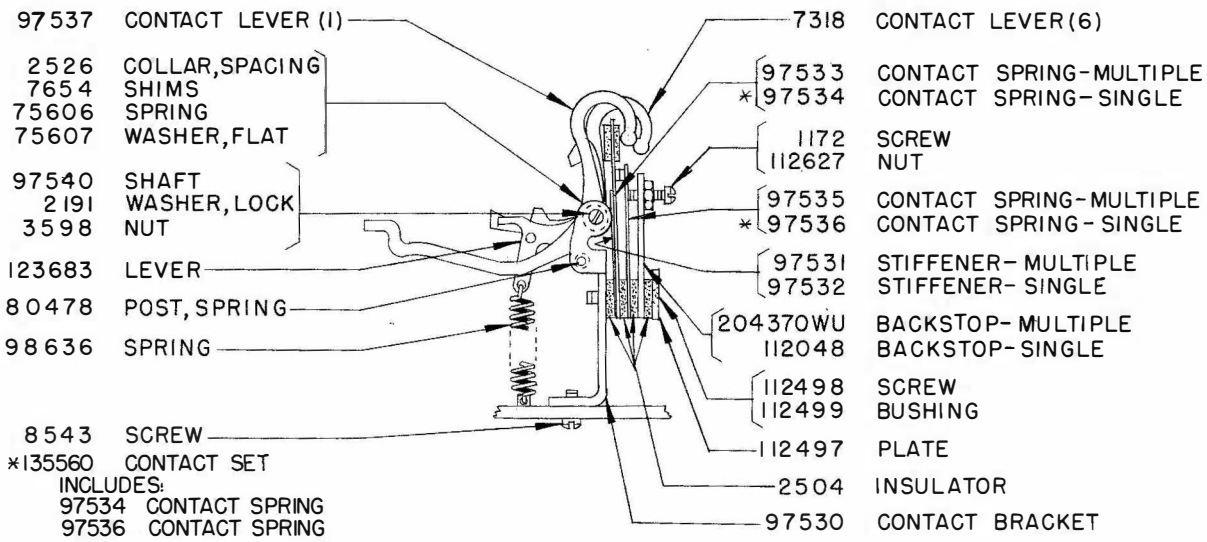
SELECTOR LEVER ASSEMBLY



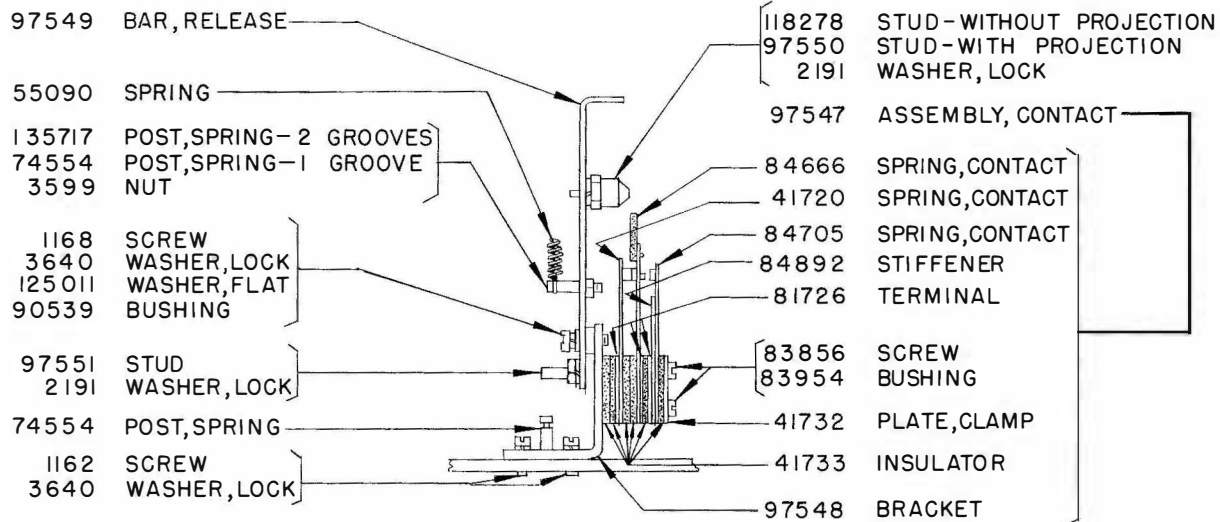
TAPE FEED PARTS



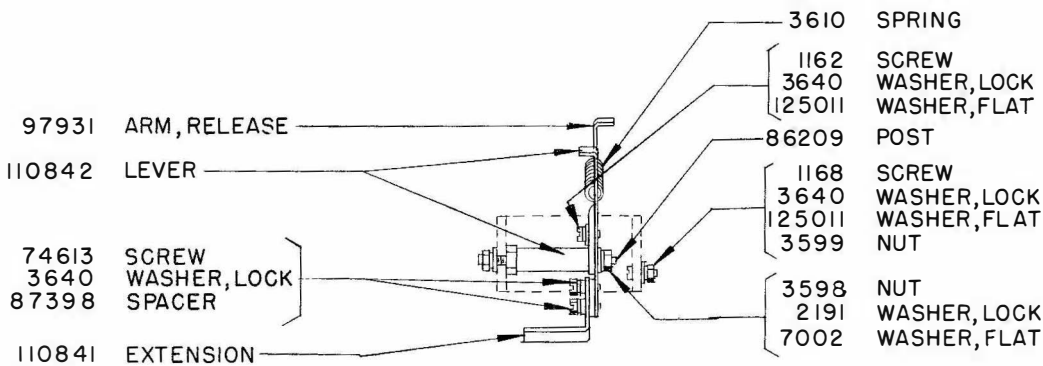
TAPE-OUT CONTACT LEVER UPSTOP



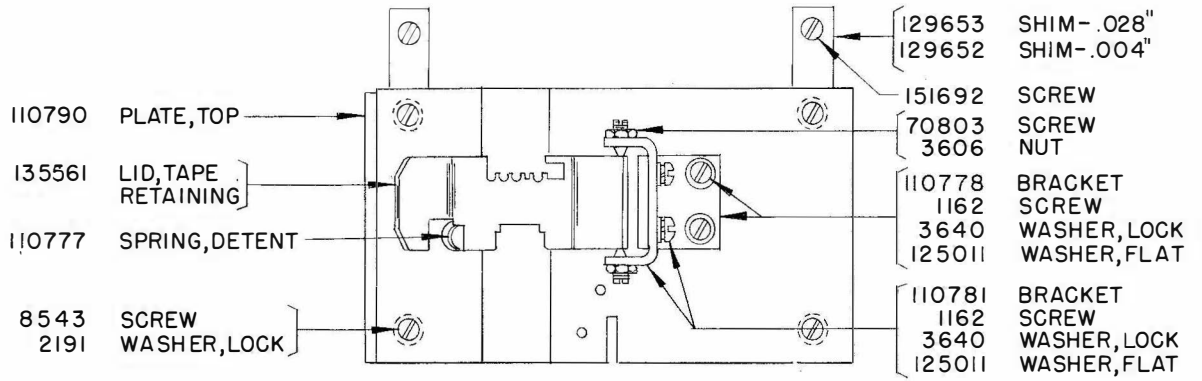
CONTACT LEVER ASSEMBLY (WITH ADJUSTABLE BACKSTOP)



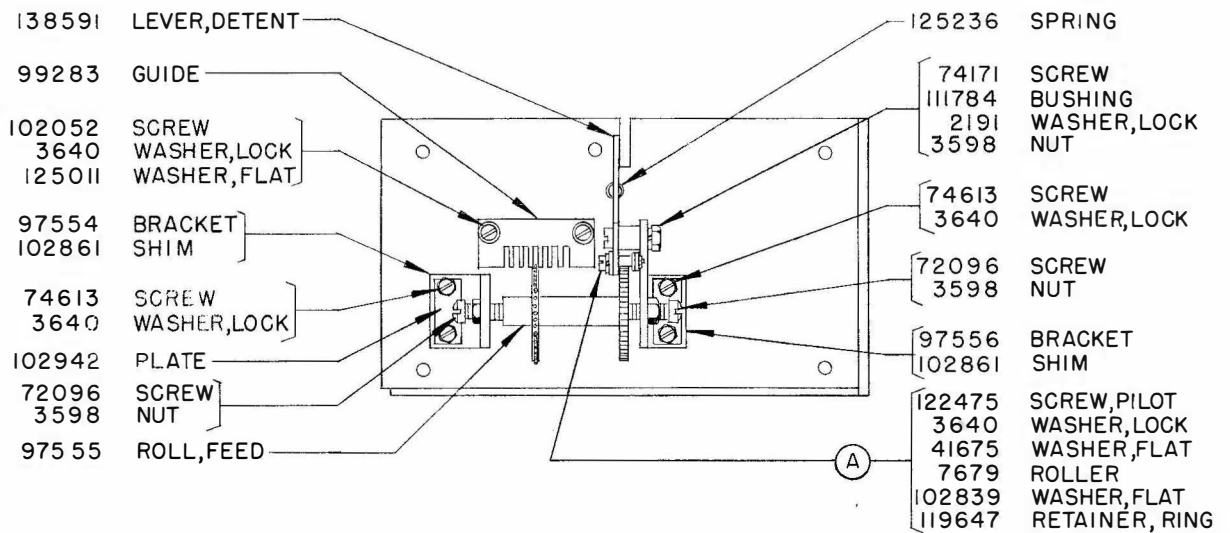
RELEASE BAR CONTACT ASSEMBLY



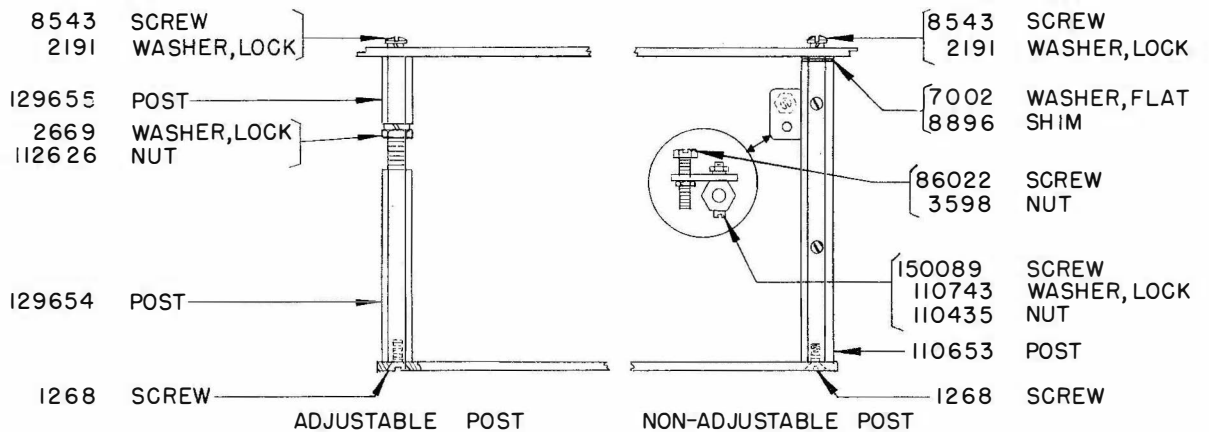
97949 LETTER SENSING MECHANISM



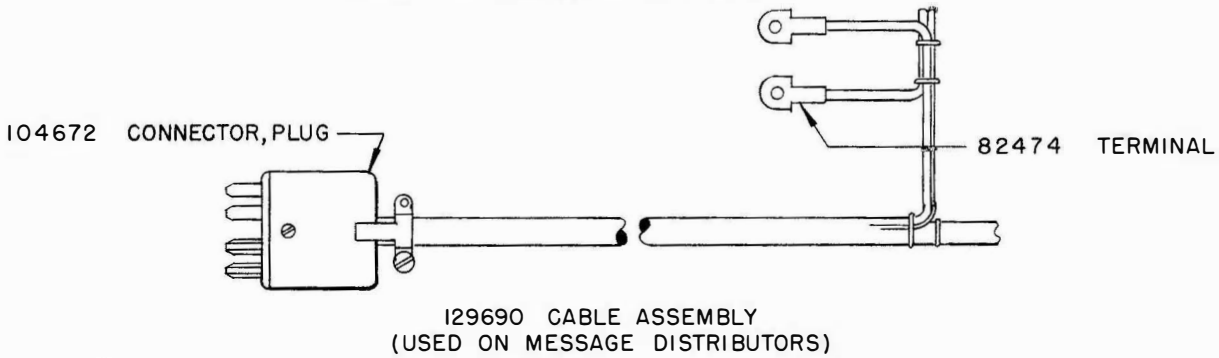
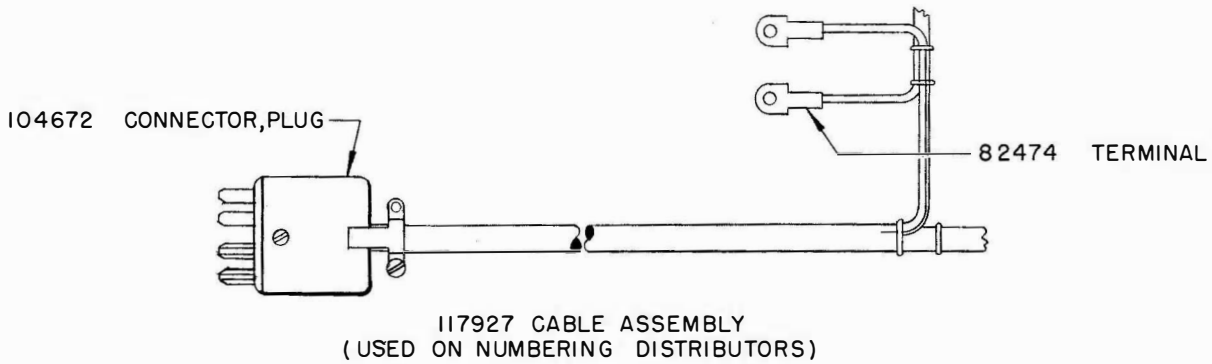
TOP PLATE - TOP VIEW



TOP PLATE - BOTTOM VIEW

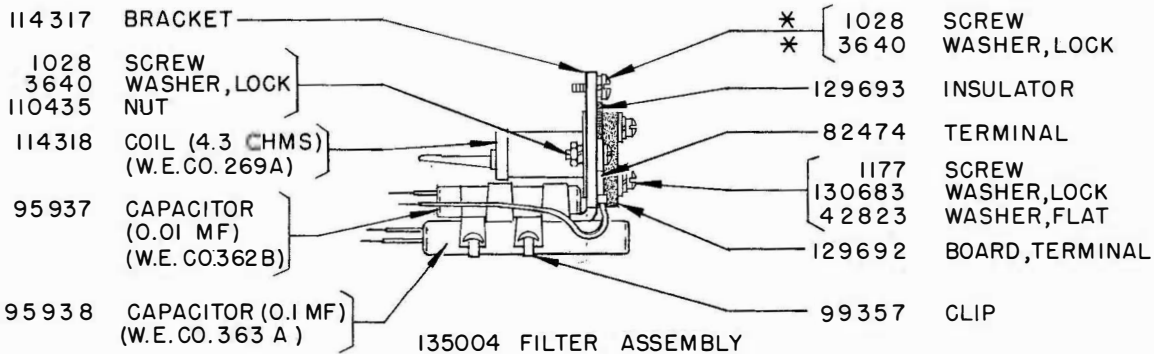
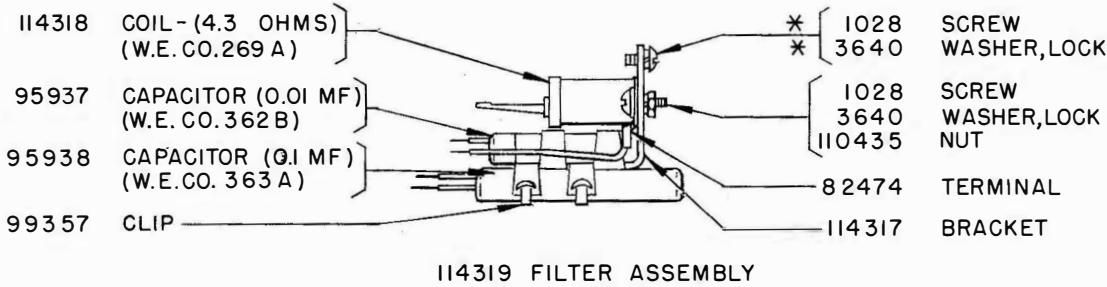


(A) SEE NOTE 5 ON PAGE 27

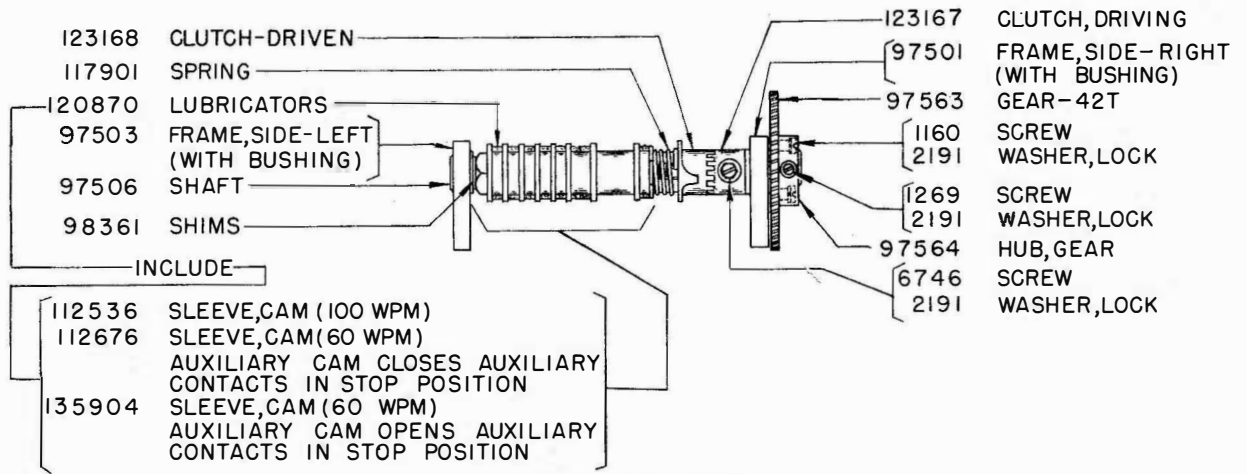


129691 FILTER & CABLE ASSEMBLY
INCLUDES:
129690 CABLE ASSEMBLY
135004 FILTER ASSEMBLY

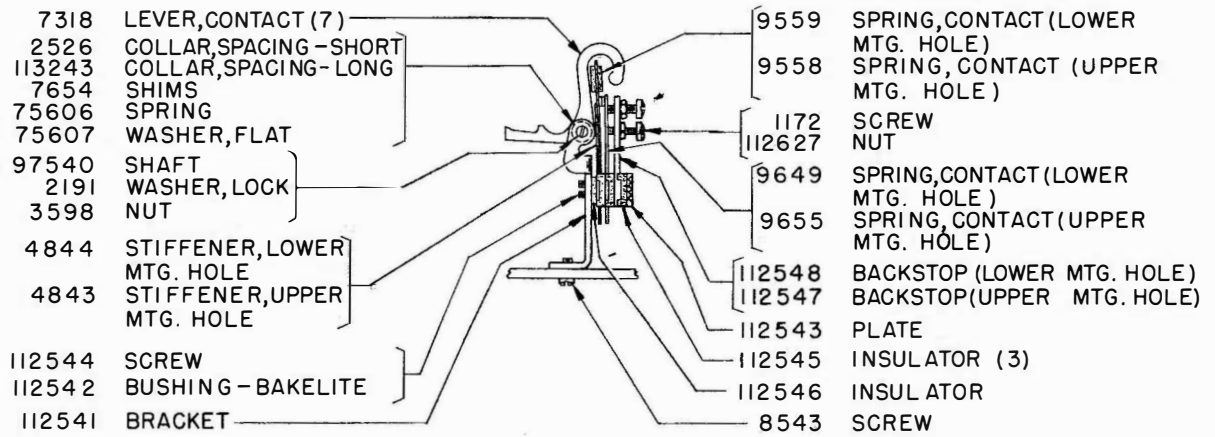
CABLES	
PART NO.	WIRING DIAGRAM
117927	2506WD
129285	2835WD
129286	2836WD
129690	2973WD



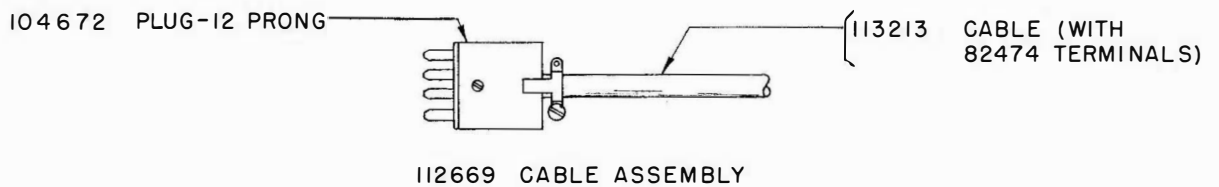
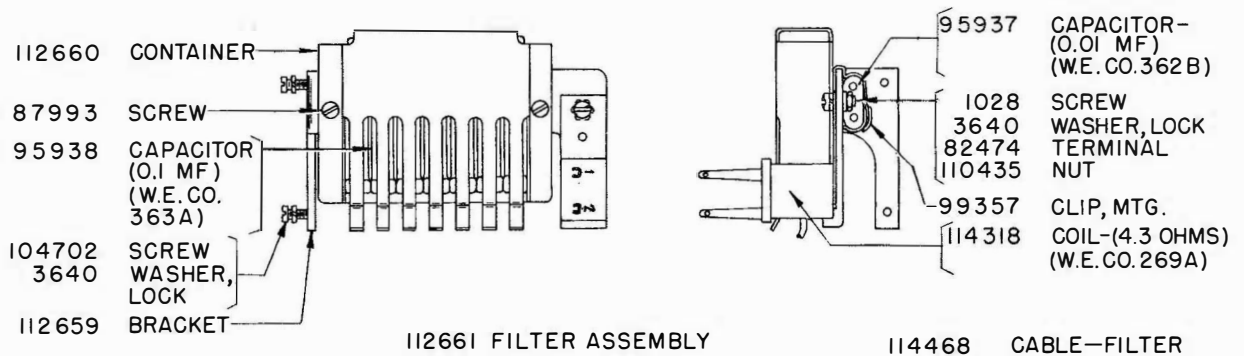
* MOUNTING PARTS NOT INCLUDED IN ASSEMBLY.



SHAFT ASSEMBLY

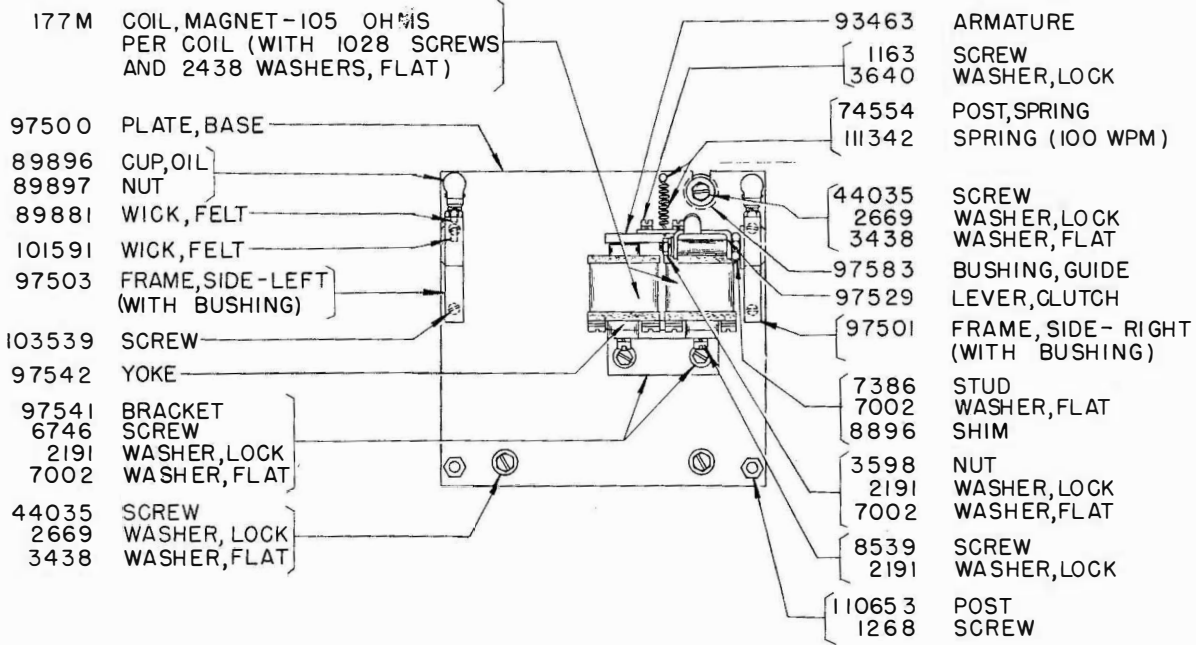


CONTACT LEVER ASSEMBLY

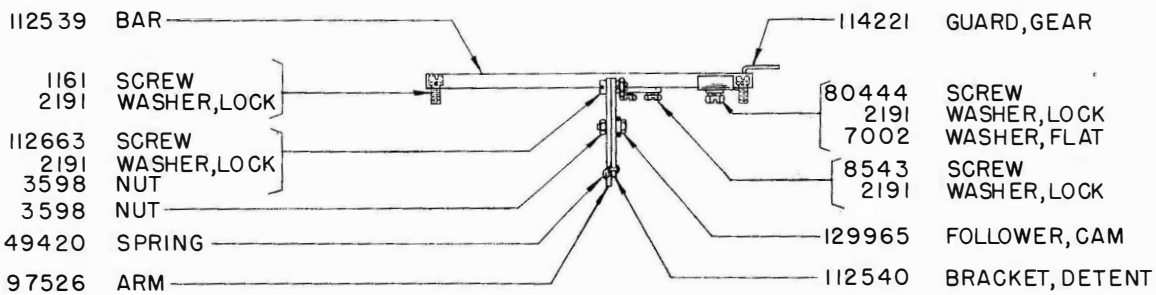




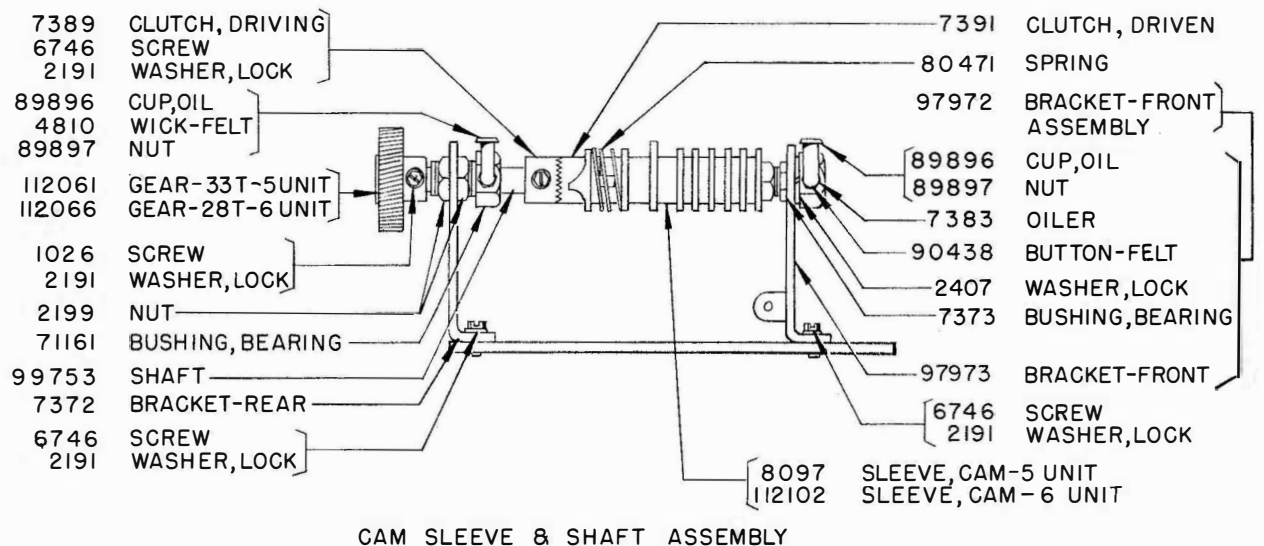
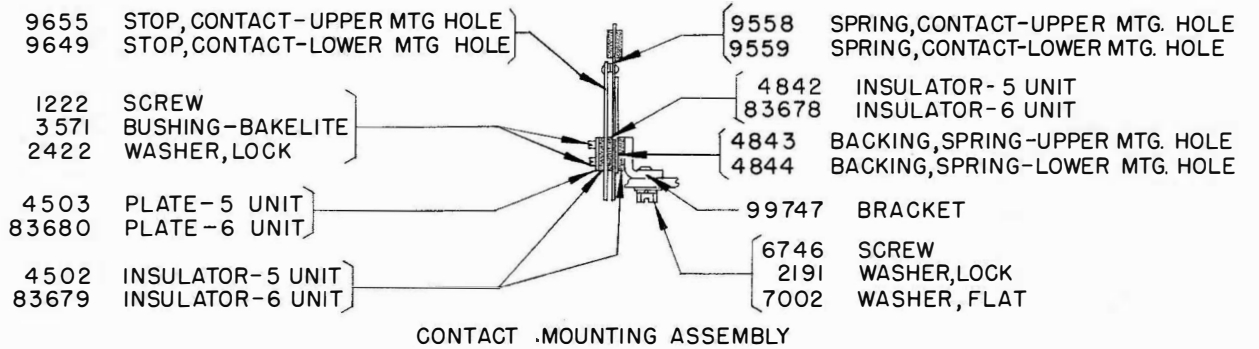
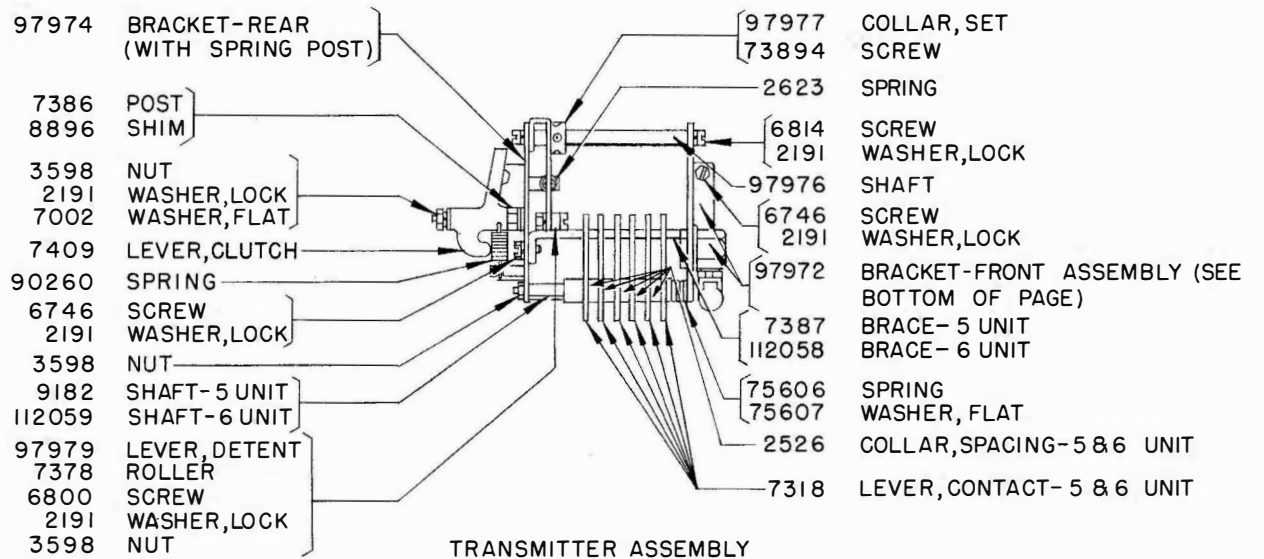
TOP PLATE
(TOP VIEW)

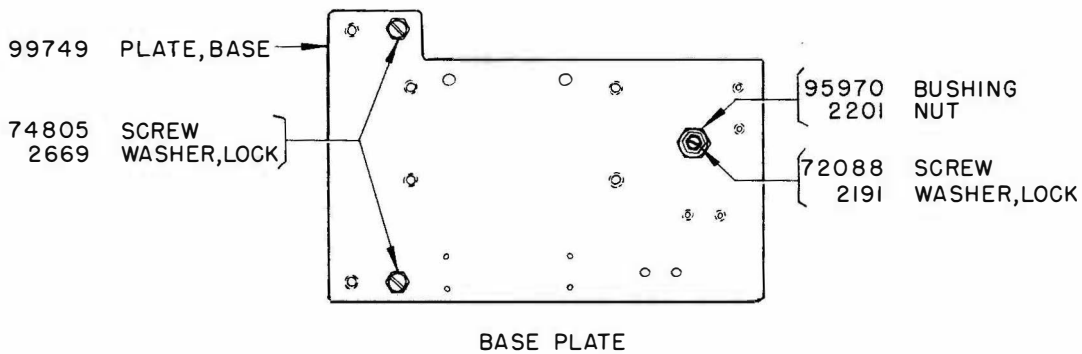
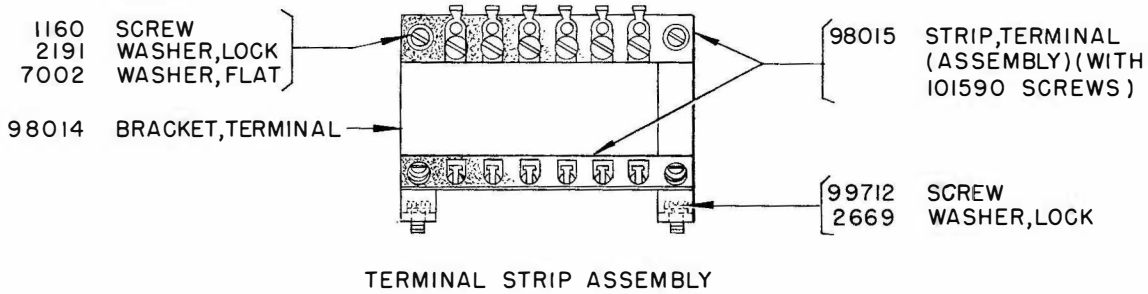
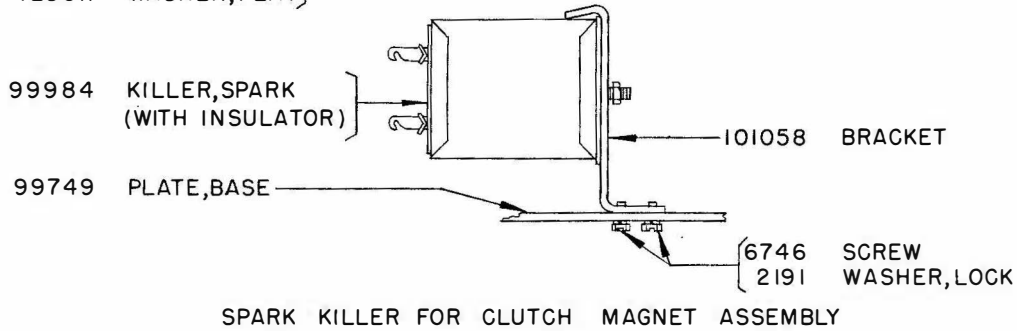
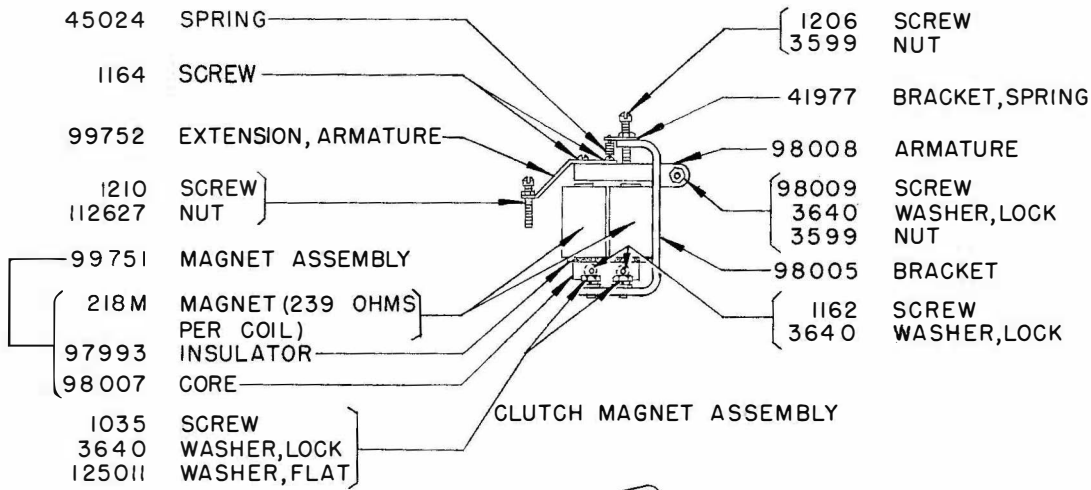


BASE PLATE



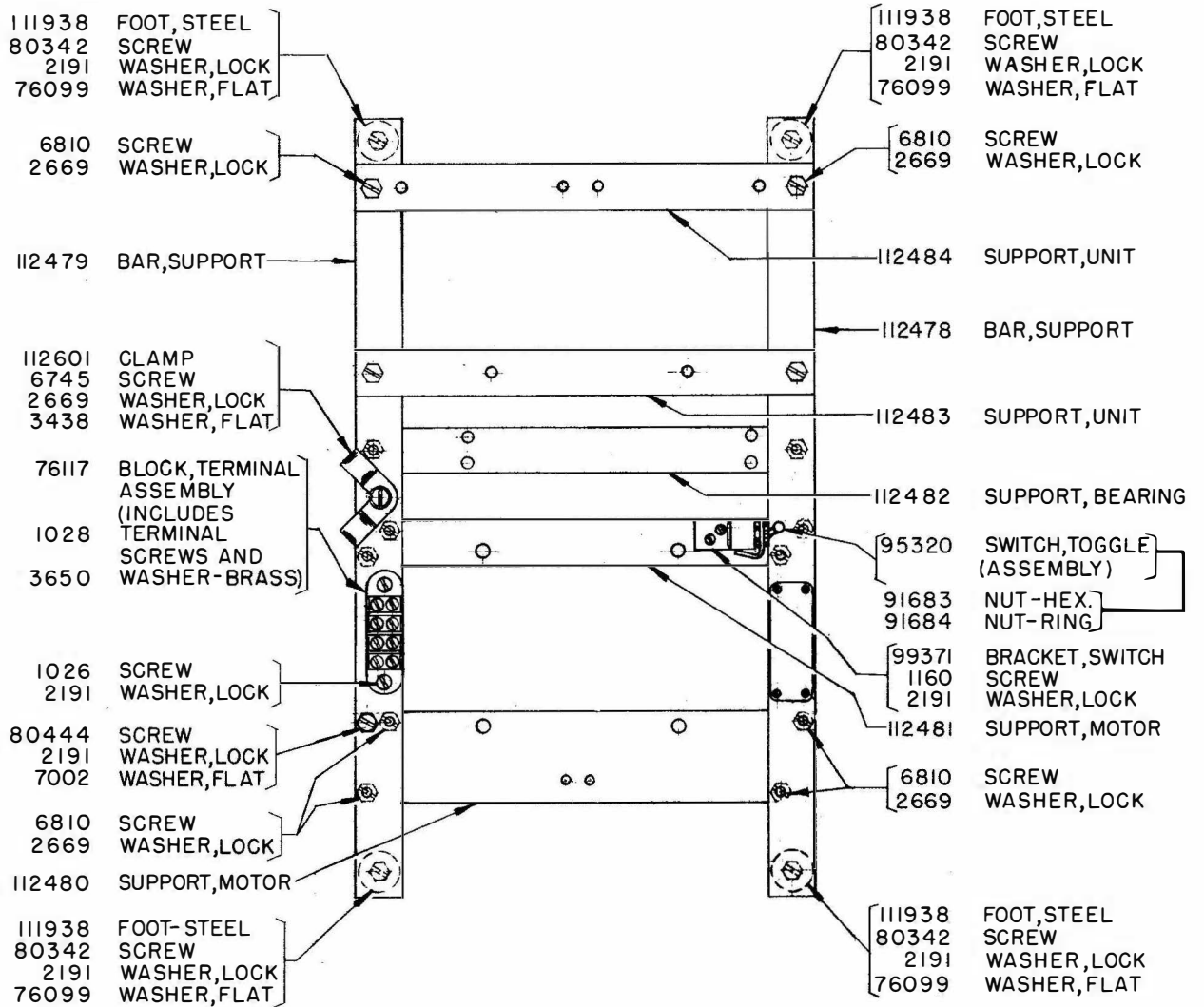
CAM SLEEVE DETENT AND GEAR GUARD PARTS



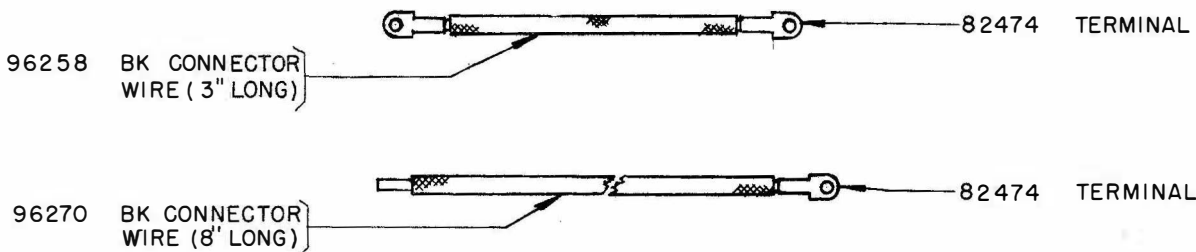
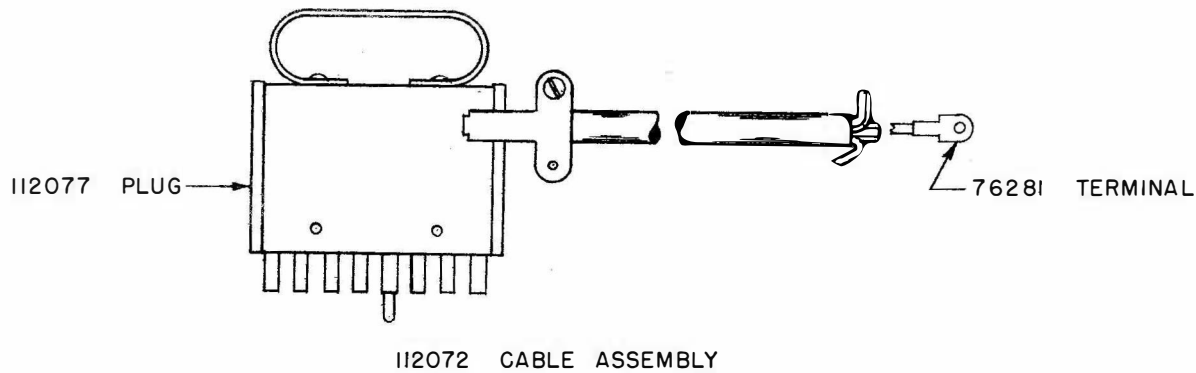
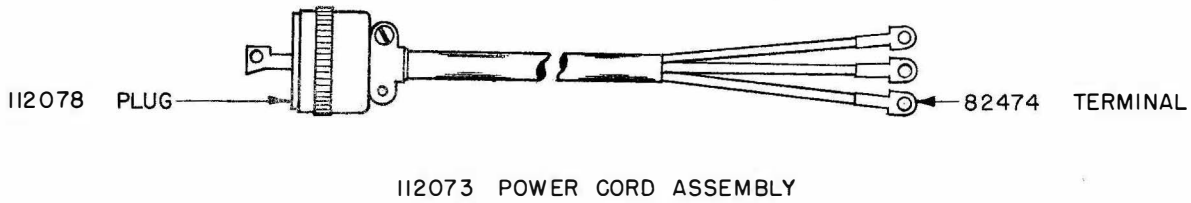
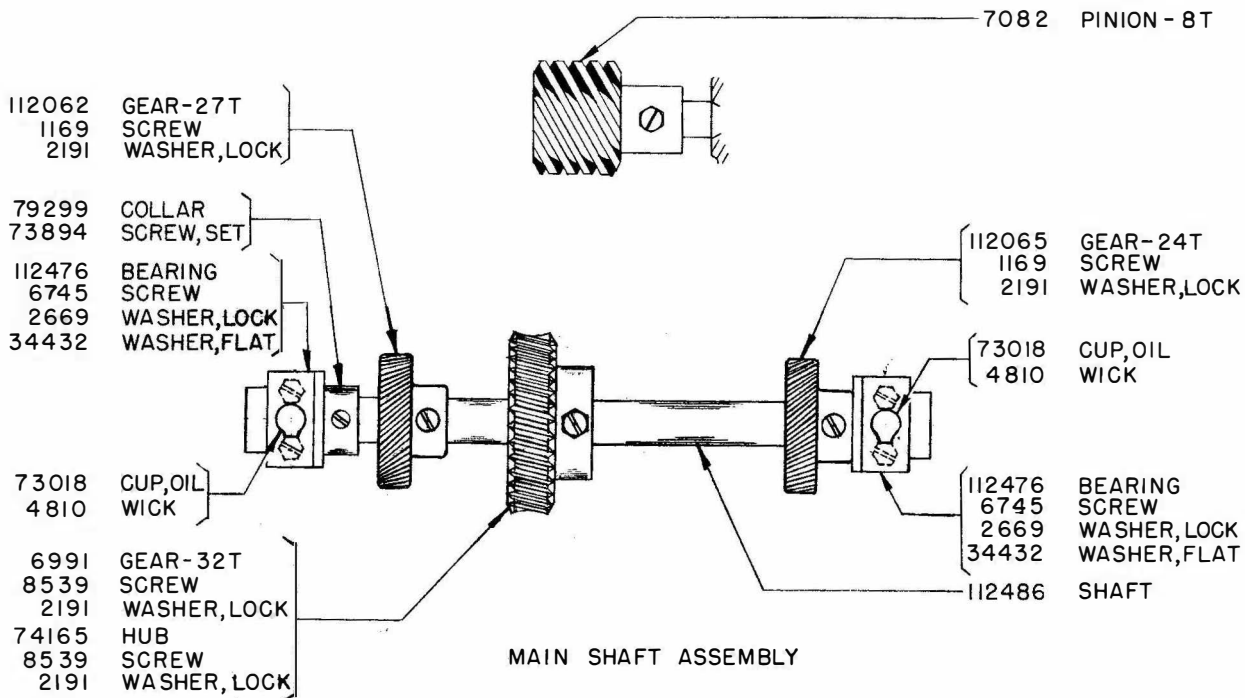


112070 CABLE (2371 WD) - 5 UNIT

112071 CABLE (2372 WD) - 6 UNIT



BASE ASSEMBLY



NOTES OF EXPLANATION

1. The 118130** rear cover assembly has been redesigned to include louvers and a new style cover plate. New and old style assemblies are interchangeable. The 118128** cover plate has been replaced by a 128803** cover plate. New and old style cover plates are not individually interchangeable. However, the 118128** cover plate will be available for maintenance purposes.
2. The 97500 base plate is used on units equipped with a positive action clutch and not equipped with slip connections. The 129299 base plate is used on units equipped with the internal expansion clutch and with slip connections. The 136954 base plate is used on units equipped with the internal expansion clutch and not equipped with slip connections.
3. The 97583 guide bushing is 5/32" high and is used on units equipped with the internal expansion clutch. The 129547 guide bushing is 11/64" high and is used on units equipped with a positive action clutch.
4. In order to prevent erratic clutch operation, a 123167 driving clutch and 123168 driven clutch have replaced the 7389 driving clutch and 7391 driven clutch respectively. The new style clutches have square teeth instead of saw teeth. New and old style clutch members are interchangeable in pairs only.
5. The 7678 pilot screw, 2248 pin, and one 102839 washer, used to secure the feed wheel detent roller to the detent lever, have been replaced by a 122475 pilot screw, 119647 retainer ring, and two 102839 washers. The new and old style pilot screws are not individually interchangeable. The detent roller and 102839 washer are interchangeable, and all the parts are interchangeable as a group.
6. A double asterisk (**) following a part or assembly number represents a two-letter suffix which denotes the color and texture of the paint finish.

NUMERICAL INDEX

Part Number	Description and Page Number	Part Number	Description and Page Number
117M	Coil, Magnet (105 Ohms), 15, 22	4843	Stiffener, Upper Mtg. Hole, 21, 23
218M	Magnet (239 Ohms Per Coil), 24	4844	Stiffener, Lower Mtg. Hole, 21, 23
1010	Screw (6-40 Shoulder), 6	4871	Screw (10-24 x 4 Rd), 3
1026	Screw (6-40 x 3/8 Fil), 2, 4, 5, 23, 25	6745	Screw (10-32 x 1/2 Hex), 25, 26
1028	Screw, Terminal (4-40 x 1/4 Fil), 3, 20, 21, 25	6746	Screw (6-40 x 5/16 Hex), 1, 2, 6, 7, 15, 21, 22, 23, 24
1033	Screw (6-40 x 5/16 Hex), 3	6800	Screw (6-40 Shoulder), 23
1035	Screw (4-40 x 3/8 Hex), 24	6810	Screw (10-32 x 3/8 Hex), 25
1041	Screw (6-40 Shoulder), 4, 5	6811	Screw (6-40 x 5/8 Hex), 1, 3, 6
1073	Screw (6-40 Thumb), 10	6814	Screw (6-40 Pilot), 23
1160	Screw (6-40 x 5/16 Fil), 4, 5, 6, 15, 24, 25	6991	Gear - 32T, 26
1161	Screw (6-40 x 1/4 Fil), 2, 4, 15, 16, 17, 22	7002	Washer, Flat, 1, 2, 3, 4, 5, 6, 7, 13, 14, 15, 16, 17, 18, 19, 22, 23, 24, 25
1162	Screw (4-40 x 1/4 Fil), 5, 11, 18, 19, 24	7082	Pinion - 8T, 26
1163	Screw (4-40 x 3/16 Fil), 6, 17, 21, 22	7318	Contact Lever, 5 & 6 Unit, 18, 21, 23
1164	Screw (2-56 x 3/16 Fil), 17, 24	7372	Bracket - Rear, 23
1168	Screw (4-40 x 5/16 Fil), 18	7373	Bushing, Bearing, 23
1169	Screw (6-40 x 7/16 Fil), 17, 26	7378	Roller, 23
1172	Screw (2-56 x 5/16 Fil), 18, 21	7383	Oiler, 3
1176	Screw (6-40 x 3/16 Fil), 3	7386	Stud, 15, 22, 23
1177	Screw (4-40 x 11/32 Fil), 20	7387	Brace - 5 Unit, 23
1179	Screw (6-40 x 5/8 Fil), 7	7389	Clutch, Driving, 23
1206	Screw (4-40 x 9/16 Fil), 24	7391	Clutch, Driven, 23
1210	Screw (2-56 x 5/8 Fil), 24	7409	Lever, Clutch, 23
1222	Screw (2-56 x 1/2 Fil), 23	7654	Shim, 18, 21
1226	Screw (6-40 x 3/4 Fil), 1	7661	Lever, Adjusting, 7
1258	Screw (10-32 x 1-3/8 Fil), 1	7679	Roller, 19
1266	Screw (6-32 x 7/16 Rd), 7	7824	Wick, Oil-Felt, 4, 5
1268	Screw (4-40 x 5/16 Flat), 6, 19, 22	8097	Sleeve, Cam - 5 Unit, 23
1269	Screw (6-40 x 1/2 Fil), 1, 15, 16, 21	8222	Strip, Wearing, 7
1297	Screw (6-40 x 2-7/16 Fil), 2, 3	8254	Clamp, Cable, 1
1298	Screw (8-32 x 1/4 Fil), 2, 6	8330	Washer, Flat, 7, 10, 11, 12
2191	Washer, Lock, 1, 2, 3, 4, 5, 6, 7, 10, 11, 12, 13, 14, 15, 16, 17, 18, 19, 21, 22, 23, 24, 25, 26	8539	Screw (6-40 x 1/2 Hex), 7, 15, 22, 26
2199	Nut, 23	8543	Screw (6-40 x 1/4 Fil), 9, 10, 11, 12, 13, 14, 15, 18, 19, 21, 22
2201	Nut, 24	8896	Shim, 15, 19, 22, 23
2407	Washer, Lock, 23	9182	Shaft - 5 Unit, 23
2422	Washer, Lock, 10, 11, 23	9558	Spring, Contact (Upper Mtg. Hole), 21, 23
2438	Washer, Flat, 3	9559	Spring, Contact (Lower Mtg. Hole), 21, 23
2504	Insulator, 18	9649	Spring, Contact (Lower Mtg. Hole), 21, 23
2526	Collar, Spacing (Short), 18, 21, 23	9655	Spring, Contact (Upper Mtg. Hole), 21, 23
2597	Washer, Flat, 17	20437WU	Backstop - Multiple, 18
2623	Spring, 23	22015	Spring, 5
2669	Washer, Lock, 1, 2, 3, 4, 5, 7, 15, 19, 22, 24, 25, 26	31636	Spring, 16
2980	Strap - 5-1/4" Long, 3	34432	Washer, Flat, 3, 6
3094	Insulator, 3	36273	Washer, Flat, 4, 5, 7
3340	Washer, Lock, 4, 5	41675	Washer, Flat, 19
3438	Washer, Flat, 2, 3, 4, 5, 21, 22, 25	41720	Spring, Contact, 18
3571	Bushing - Bakelite, 23	41732	Plate, Clamp, 18
3598	Nut, Hex, 1, 6, 7, 12, 15, 17, 18, 19, 21, 22, 23	41733	Insulator, 18
3599	Nut, 9, 15, 17, 18, 24	41977	Bracket, Spring, 24
3606	Nut, Rear, 4, 5, 6, 16, 19	42823	Washer, Flat, 16, 20
3610	Spring, 18	44035	Screw (10-32 x 9/16 Hex), 15, 22
3640	Washer, Lock, 3, 5, 6, 9, 15, 17, 18, 19, 20, 21, 22, 24	45024	Spring, 24
3646	Washer, Lock, 2, 3, 6	49084	Spring, Armature, 16
3650	Washer, Brass, 25	49420	Spring, 22
4502	Insulator - 5 Unit, 23	55090	Spring, 6, 17, 18
4503	Plate - 5 Unit, 23	60669	Spring, 16
4703	Spring, 4, 5	70722	Resistor (500 Ohms), 3
4810	Wick - Felt, 23, 26	70724	Insulator, 3
4842	Insulator - 5 Unit, 23	70803	Screw (6-40 Pivot), 19
		70873	Cap, Brush Holder, 7
		70887	Nut, 3
		71047	Shim (.010), 2
		71171	Bushing, Bearing, 23

NUMERICAL INDEX

Part Number	Description and Page Number	Part Number	Description and Page Number
71853	Resistor (300 Ohms) (W.E. Co. 18AF), 3	84579	Washer, Flat, 7
72088	Screw (6-40 x 1-1/16 Hex), 24	84666	Spring, Contact, 18
72096	Screw (6-40 Pilot), 19	84705	Spring, Contact, 18
73018	Cup, Oil, 26	84892	Stiffener, 18
73670	Block, Terminal, 2	85389	Eccentric, 6
73844	Washer, Flat, 17	85465	Bearing, 4, 5
73894	Screw (6-40 Set), 23, 26	86022	Screw (6-40 x 3/4 Hex), 1, 19
74059	Screw (6-40 x 7/32), 7	86209	Post, 18
74165	Hub, 26	86283	Spring, 5
74171	Screw (6-40 Eccentric), 19	86341	Screw (3/16 x 32 Set), 1
74520	Screw (6-40 Eccentric), 4, 5	86720	Post, Spring, 16
74554	Post, Spring, 15, 18, 22	87398	Spacer, 18
74613	Screw (4-40 x 1/4 Hex), 17, 18, 19	87477	Resistor (1000 Ohms), 2
74722	Washer, Flat, 17	87638	Screw (2-56 x 3/32 Rd), 13
74805	Screw (10-32 x 3/4 Hex), 24	87993	Screw (6-40 x 5/32 Fil), 21
74962	Spring, 17	88455	Washer, Flat, 2
74986	Screw (6-40 x 13/32 Hex), 12	88802	Screw (6-32 x 1-1/16 Flat), 6
75429	Screw (10-32 x 1-1/2 Flat), 3	88924	Foot-Rubber, 2
75606	Spring, 18, 21, 23	88925	Cup, 2
75607	Washer, Flat, 18, 21, 23	89881	Wick, Felt, 15, 28
75750	Washer, Insulating, 3	89896	Cup, Oil, 15, 22, 23
76086	Spring, Friction, 4	89897	Nut, Hex, 15, 22, 23
76099	Washer, Flat, 12, 25	89925	Terminal, End, 3
76117	Block, Terminal Assembly, 25	90096	Washer, Fiber, 2
76168	Screw (6-40 x 3/16 Hex), 16	90260	Spring, 23
76281	Terminal, 26	90436	Wick, Oil - Felt, 5
76379	Spring, (100 wpm), 17	90438	Button - Felt, 23
76484	Fan, 7	90535	Washer, Felt, 17
76863	Screw (1/4-20 x 5/8 Rd), 2	90539	Bushing, 18
77012	Nut, Friction, 4, 5	90789	Washer, Flat, 1
77018	Disk, Friction, 4, 5	90791	Washer, Lock, 17
77140	Nut, 4, 5	91617	Shim (.010"), 7
78011	Capacitor (1 M μ), 3	91683	Nut, Hex, 25
78028	Screw (6-40 x 15/16 Hex), 7	91684	Nut, Ring, 25
78301	Screw (10-32 x 5/8 Hex), 2, 4, 5, 7	92685	Spacer, 17
78474	Screw (2-56 x 1/4 Rd), 10, 11	93356	Washer, Felt, 16, 17
78533	Spring, 17	93463	Armature, 15, 22
78905	Washer, Fiber, 7	94679	Capacitor - .1, .1, .01, MF (W.E. Co. 313C), 2
79299	Collar, 26	95320	Switch, Toggle, 25
80283	Screw (4-40 Shoulder), 17	95430	Spring, 16
80294	Post, Spring, 6	95935	Bushing, Fiber, 7
80342	Screw (6-40 x 23/64 Hex), 25	95936	Coil, Retard (1.1 Ohms) (W.E. Co. 225A), 7
80352	Governor, 7	95937	Capacitor (.01 MF) (W.E. Co. 362B), 7, 20, 21
80444	Screw (6-40 x 1/4 Hex), 15, 16, 17, 22, 25	95938	Capacitor (.1 MF) (W.E. Co. 363A), 7, 20, 21
80471	Spring, 23	95970	Bushing, 24
80478	Post, Spring, 18	96258	BK Connector Wire (3" Long), 26
80709	Screw (6-40 x 1/4 Rd), 6	96270	BK Connector Wire (8" Long), 26
80845	Screw (10-32 x 1-3/16 Fil), 1, 4, 5	96781	Resistor (10 Ohms), 3
81726	Terminal, 18	97481	Wick, Oil, 1
82283	Motor - 60 Cycle, 7	97500	Plate, Base, 15, 22
82440	Screw (6-40 x 7/16 Hex), 1	97501	Frame, Side - Right (with Bushing), 15, 21, 22
82474	Terminal, 7, 8, 20, 21, 26	97503	Frame, Side - Left (with Bushing), 15, 21, 22
82702	Screw (6-40 x 9/32 Flat), 7	97506	Shaft, 21
82720	Screw (6-40 Set), 4, 5	97511	Sleeve, Cam (65 wpm), 15
82725	Spring, 15	97512	Comb, 17
82728	Plate, Name, 10, 11	97513	Shaft, 17
83355	Washer, Fiber, 2	97514	Bail, Selector Lever, 17
83561	Washer, Spring, 9	97515	Extension, Bail, 17
83678	Insulator - 6 Unit, 23	97516	Bushing, 17
83679	Insulator - 6 Unit, 23	97523	Lever, Tape-out - Large Pin, 17
83680	Plate - 6 Unit, 23	97525	Lever, Feed Pawl, 17
83740	Collar, Set, 1	97526	Arm, Feed Pawl, 17, 22
83856	Screw (4-40 x 11/16 Fil), 18		
83954	Bushing, 18		
84047	Stop, 7		

NUMERICAL INDEX

Part Number	Description and Page Number	Part Number	Description and Page Number
97527	Pawl, Feed, 17	99371	Bracket, Switch, 25
97528	Retainer, 17	99373	Clamp, Cable, 1
97529	Lever, Clutch, 15, 22	99712	Screw (10-32 x 5/16 Hex), 24
97530	Contact Bracket, 18	99747	Bracket, 23
97531	Stiffener - Multiple, 18	99749	Plate, Base, 24
97532	Stiffener - Single, 18	99751	Magnet Assembly, 24
97533	Contact Spring - Multiple, 18	99753	Shaft Extension, Armature, 23, 24
97534	Contact Spring - Single, 18	99803	Insulator, 4, 5
97535	Contact Spring - Multiple, 18	99984	Killer, Spark (with Insulator), 24
97536	Contact Spring - Single, 18	100842	Washer, Lock, 10
97537	Contact Lever, 18	100845	Nut, Wing, 6
97540	Shaft, 18, 21	101058	Bracket, 24
97541	Bracket, 15, 22	101385	Spring, 17
97542	Yoke, 15, 22	101591	Wick, Felt, 15, 22
97543	Bracket, 15	101766	Sleeve, Cam (60 & 70 wpm), 15
97545	Latch, 15	102052	Screw (4-40 x 9/32 Fil), 19
97546	Bracket, 17	102465	Screw (6-40 x 37/64 Fil), 1
97547	Assembly, Contact, 18	102839	Washer, Flat, 19
97548	Bracket, 18	102861	Shim, 19
97549	Bar, Release, 18	102898	Connector, Plug - 3 Prong, 8
97550	Stud - with Projection, 18	102942	Plate, 19
97551	Stud, 18	103539	Screw (6-40 x 3/8 Fil), 15, 22
97554	Bracket, 19	104451	Washer, Lock, 7
97555	Roll, Feed, 19	104672	Connector, Plug - 12 Prong, 20, 21
97556	Bracket, 19	104702	Screw (4-40 x 7/16 Fil), 21
97563	Gear - 42T, 15, 16, 21	109757	Washer, Felt, 16
97564	Hub, Gear, 15, 21	109839	Spring, 16
97568	Bearing, 1	110334	Screw (4-40 Shoulder), 17
97576	Gear - 39T, 1	110435	Nut, 6, 17, 19, 20, 21
97583	Bushing, Guide, 15, 22	110437	Spring, 4, 5, 17
97584	Bar, 2	110650	Pinion - 10T (60 wpm), 10
97585	Bar, 2	110651	Gear - 53T (60 wpm), 7
97586	Post, 1	110653	Post, 19, 22
97590	Strap, 10	110673	Shaft, 1
97931	Arm, Release, 18	110703	Post, 1
97949	Letter Sensing Mechanism, 18	110726	Guard, Gear, 1
97972	Bracket - Front Assembly, 23	110743	Washer, Lock, 11, 16, 19
97973	Bracket - Front, 23	110777	Spring, Detent, 15, 19
97974	Bracket - Rear, 23	110778	Bracket, 19
97976	Shaft, 23	110781	Bracket, 19
97977	Collar, Set, 23	110790	Plate, Top, 19
97979	Lever, Detent, 23	110824	Screw (6-40 x 1-13/16 Fil), 2
97993	Insulator, 24	110834	Bracket, 3
98005	Bracket, 24	110841	Extension, 18
98007	Core, 24	110842	Lever, 18
98008	Armature, 24	110952	Cover, Top, 9, 13
98014	Bracket, Terminal, 24	110953	Chute, Tape (with Bracket), 13
98015	Strip, Terminal (Assembly) (with 101590 Screws), 24	110955	Holder, Card, 10, 13
98198	Shim (.004"), 1	110978	Cable, Governed Motor, 8
98237	Pin, Long, 4	110979	Cable, Governor Circuit - AC, 8
98361	Shim, 16, 21	111017	Screw (6-40 x 5/16 Fil), 11, 12, 13
98636	Spring, 18	111252	Filter Unit, 7
98642	Washer, Lock, 3	111264	Pinion - 12T (100 wpm), 7
99259	Lever, Selector #1 - Right, 17	111265	Gear - 39T (100 wpm), 10
99260	Lever, Selector #2, 17	111342	Spring (100 wpm), 15, 22
99261	Lever, Selector #3, 17	111436	Bracket, 2
99262	Lever, Selector #4, 17	111442	Screw (4-40 Shoulder), 15
99263	Lever, Selector #5 - Left, 17	111464	Shim (.004"), 17
99283	Guide, 19	111647	Resistor (1000 Ohms Each), 2
99293	Post, 1	111784	Bushing, 19
99354	Container, 7	111811	Switch (Assembly), Toggle, 1
99355	Bracket, 7	111938	Foot, Steel, 25
99356	Bracket, 7	112048	Backstop - Single, 18
99357	Clip, 7, 20, 21	112058	Brace - 6 Unit,
		112059	Shaft - 6 Unit,

NUMERICAL INDEX

Part Number	Description and Page Number	Part Number	Description and Page Number
112061	Gear - 33T - 5 Unit, 23	113202	Cord Assembly, Power, 8
112062	Gear - 27T, 26	113213	Cable, 21
112065	Gear - 24T, 26	113243	Collar, Spacing - Long, 21
112066	Gear - 28T - 6 Unit, 23	113452	Cable, Switch, 8
112070	Cable (2371 WD) - 5 Unit, 24	114208	Guard, 10
112071	Cable (2372 WD) - 6 Unit, 24	114221	Guard, Gear, 17, 22
112072	Cable Assembly, 26	114317	Bracket, 20
112073	Power Cord Assembly, 26	114318	Coil (4.3 Ohms) (W.E. Co. 269A), 20, 21
112077	Plug, 26	114319	Filter Assembly, 20
112078	Plug, 26	114468	Cable, Filter, 21
112102	Sleeve, Cam - 6 Unit, 23	114773	Connector, Plug - 27 Prong, 8
112476	Bearing, 26	115221	Washer, Felt, 16
112478	Bar, Support, 25	115529	Screw (6-40 x 11/16 Fil), 10
112479	Bar, Support, 25	115615	Screw (6-40 x 5/8 Fil), 16
112480	Support, Motor, 25	116167	Nut, Cap, 6
112481	Support, Motor, 25	116706	Cable, Governor Circuit - DC, 8
112482	Support, Bearing, 25	116992	Screw (1/4-32 Pilot), 7
112483	Support, Unit, 25	117385	Lever, Tape-out - Small Pin, 17
112484	Support, Unit, 25	117760	Relay (3507B), Lower, 6
112486	Shaft, 26	117761	Relay (3QA20A), Upper, 6
112497	Plate, 18	117800	Disk, 6
112498	Screw (6-40 x 3/4 Flat), 18	117803	Washer, Flat, 4, 5
112499	Bushing, 18	117810	Plate, 6
112535	Plate, Top, 22	117826	Shaft, 4
112536	Sleeve, Cam (100 wpm), 21	117827	Plate, Bearing, 4
112539	Bar, 22	117828	Sleeve, 4, 5
112540	Bracket, Detent, 22	117830	Disk, 4
112541	Bracket, 21	117831	Reel, Tape, 4, 6
112542	Bushing - Bakelite, 21	117832	Ratchet, 4, 5
112543	Plate, 21	117833	Collar, 4, 5
112544	Screw (2-56 x 3/14 Flat), 21	117834	Block, Mounting, 4, 5
112545	Insulator, 21	117835	Arm, 4
112546	Insulator, 21	117836	Post, Spring, 4, 5
112547	Backstop (Upper Mtg. Hole), 21	117837	Pawl, 4, 5
112548	Backstop (Lower Mtg. Hole), 21	117838	Stud, 4, 5
112601	Clamp, 25	117841	Bracket, 4
112621	Screw (4-40 Shoulder), 9	117842	Arm, 4
112627	Nut, 10, 11, 18, 21, 24	117843	Latch, Spring, 4
112636	Nut, 3, 6, 10, 19	117844	Hub, 4
112659	Bracket, 21	117845	Pin, Short, 4, 6
112660	Container, 21	117846	Bracket, 6
112661	Filter Assembly, 21	117847	Stud, 6
112663	Screw (6-40 Shoulder), 22	117848	Washer, Flat, 6
112665	Plate, 13	117899	Bracket, 2
112666	Bracket, 1	117901	Spring, 15, 21
112667	Bracket - Left, 3	117927	Cable Assembly, 20
112668	Bracket, 3	117930	Plate, 6
112669	Cable Assembly, 21	118093	Cable, Resistor, 8
112676	Sleeve, Cam (60 wpm), 21	118129	Cover, Rear, 9
112686	Gear - 39T (100 wpm), 7	118130	Cover Assembly - Rear, 9
112687	Pinion - 14T (100 wpm), 7	118131	Cover, Left, 9, 12
112688	Gear - 40T (75 wpm), 7	118132	Cover, Top, 9, 14
112689	Pinion - 11T (75 wpm), 7	118133	Cover, Front, 9, 10
112690	Gear - 50T (60 wpm), 7	118134	Cover, Right, 9, 11
112691	Pinion - 11T (60 wpm), 7	118135	Plate, 6
112692	Handle, 1	118136	Post, 6
112694	Receptacle, 3	118137	Cable, Signal Line, 8
112695	Connector, Plug - 3 Prong, 8	118138	Cord Assembly, Power, 8
112697	Bracket - Right, 3	118278	Stud - without Projection, 18
113183	Insulator, 3	118366	Cable, Relay, 8
113184	Spring, Slip (Right), 15	118436	Cover, Top, 9, 14
113185	Spring, Slip (Left), 15	118445	Cover, Right, 9, 11
113186	Insulator, 15	118446	Cover, Front, 9, 10
113200	Cable, Signal Line, 8	118447	Cover, Left, 9, 12
113201	Cable, 8	118448	Cover, Left Rear, 9, 12

NUMERICAL INDEX

Part Number	Description and Page Number	Part Number	Description and Page Number
119543	Cover, Front, 9, 10	129297	Shaft, 16
119545	Bracket - Two Holder, 13	129299	Plate, Base, 15
119647	Retainer, Ring, 19	129300	Bracket, 16
119659	Cardholder Assembly, Two Card, 9	129301	Bracket, Magnet, 16
120870	Lubricators, 15, 21	129302	Bail, 16
121246	Clamp, Cable, 2	129304	Shaft, 16
121927	Strap, 7	129305	Shaft, 16
122041	Pinion - 8T (75 wpm), 7	129306	Lever, Latch, 16
122042	Gear - 34T (75 wpm), 7	129307	Lever, Trip, 16
122293	Motor, D.C., 7	129308	Lever, Reset, 16
122295	Motor, A.C., 7	129309	Screw (6-40 Shoulder), 16
122475	Screw (4-40 Pilot), 19	129310	Roller, 16
122747	Washer, Felt, 4, 5	129311	Bushing, 16
122758	Bracket - Three Holder, 13	129313	Sleeve, Cam (100 wpm), 16
122759	Three-Card Holder Assembly, 13	129314	Comb, 17
123167	Clutch, Driving, 15	129315	Bracket, Mounting, 15
123168	Clutch, Driven, 15, 21	129316	Slip, Insulating, 15
		129317	Cable, Switch, 8
123683	Lever, 18	129318	Cable Assembly, 8
124153	Plate, Bearing, 5	129319	Cable, Signal Line, 8
124168	Arm, 6	129333	Bracket, 3
124177	Washer, Lock, 15, 16, 17	129334	Block, Mounting, 3
124980	Connector, Plug - 27 Prong, 8	129335	Strip, Insulating, 3
125005	Screw (2-56 x 3/16 Fil), 10	129336	Spring, Slip Connection, 3
125011	Washer, Flat, 5, 17, 18, 19, 24	129337	Spring, Slip Connection, 3
125236	Spring, 19	129339	Bracket, 1
129285	Cable, 20	129340	Bracket, 12
125789	Shim (.010), 9	129341	Cover, Rear, 9, 12
125802	Washer, Flat, 9, 15	129342	Cover, Left, 9, 12
128256	Ratchet, 5	129343	Cover, Right, 9, 11
128257	Pawl, 5	129334	Cover, Right, 9, 11
128258	Arm, 5	129345	Guard, 11
128259	Hub, 1	129346	Cover, Front (Door), 9, 10
128261	Reel, Tape (with Core), 6	129347	Cover, Front (Door), 9, 10
128262	Bushing, 6	129350	Spring, Slip Connection, 3
128263	Cable Assembly, Signal Line, 8	129351	Spring, Slip Connection, 3
128264	Bearing, 5	129479	Block Assembly, Slip Connection, 3
128266	Bracket, 5	129522	Resistor - Capacitor Assembly, 3
128267	Pin, Long, 5	129523	Bracket, 3
128268	Pin, Latch, 5	129524	Insulator, 3
128269	Bracket, 6	129547	Bushing, Guide, 15
128270	Arm, 5	129652	Shim - .004", 19
128271	Screw (6-40 Shoulder), 5	129653	Shim - .028", 19
128272	Pin, Short, 5	129654	Post, 19
128274	Bracket, 5	129655	Post, 19
128325	Reel, Tape, 5	129661	Hub, 15, 16
128330	Shaft, 5	129673	Hub, Gear, 1
128331	Spacer, 5	129690	Cable Assembly, 20
128333	Latch, Spring, 5	129692	Board, Terminal, 20
128336	Cover, Top, 9, 14	129693	Insulator, 20
128337	Cover, Front, 9, 10	129781	Shim, 10
128338	Handle, 6	129965	Follower, Cam, 17, 22
128668	Chute, Tape, 13	130683	Washer, Lock, 20
128803	Plate, Cover, 9	135002	Upstop, 17
129098	Screw (6-40 x 11/32 Flat), 5	135004	Filter Assembly, 20
129210	Connector, Plug - 27 Prong, 8	135561	Lid, Tape, Retaining, 19
129256	Screw (6-40 Thumb), 10	135717	Post, Spring - 2 Grooves, 18
129257	Plate, Nut, 12	135718	Cover, Top, 9, 14
129286	Cable, 20	135719	Cover, Top, 9, 14
129288	Bearing, 16	135876	Cover, 2
129289	Disk, 16	135904	Sleeve, Cam (60 wpm), 21
129290	Disk, Adjusting, 16	136452	Resistor (800 Ohms), 2
129291	Cam, 16	138591	Lever, Detent, 19
129292	Lever, Shoe Release, 16	150001	Drum, 16
129296	Sleeve, Cam (60 & 75 wpm), 16	150029	Wick, Felt, 16

NUMERICAL INDEX

Part Number	Description and Page Number	Part Number	Description and Page Number
150043	Shoe, Secondary, 16	151692	Screw (6-40 x 3/16 Fil), 19
150044	Shoe, Primary, 16	151693	Screw (6-40 x 9/16 Fil), 3
150089	Screw (4-40 x 1/2 Fil), 19	151723	Screw (10-32 x 3/8 Hex), 3
150241	Spring, 16	151728	Spring, 16
151222	Washer, Felt, 16	151732	Screw (4-40 x 11/32 Fil), 17
151657	Screw (6-40 x 1/4 Fil), 6	151737	Screw (4-40 x 11/64 Hex), 16
151658	Screw (6-40 x 5/16 Fil), 6	152426	Nut, Locking, 10
151687	Screw (4-40 x 7/16 Fil), 16		

)

)

)

)