

TELETYPE

PRINTING TELEGRAPH SYSTEMS

PARTS

MULTIPLE REPERFORATOR SET CONSISTING OF

- (1) REPERFORATOR BASE (MRPEBIBI)
(WITH GEARS & PINIONS—FOR 75 W.P.M.)
- (4) REPERFORATOR UNITS (MRPEIB)
(WITH GEARS—FOR 75 W.P.M.)
- (2) MOTOR UNITS (MU31)
(110 V., 60 CYCLE SYNCHRONOUS)
- (1) COVER (C180)



REG. U.S. PAT. OFF.
CORPORATION
SUBSIDIARY OF
Western Electric Company
CHICAGO, U. S. A.

Teletype Corporation
Chicago, Illinois, U.S.A.

APPARATUS NOT USED BY
BELL SYSTEM

6/9/54
825EE
Issue 1
April, 1954

CHANGES AND ADDITIONS
TO BULLETIN NO. 1130B, ISSUE 1
PARTS - MULTIPLE REPERFORATOR SET

Page 6 Main Shaft Assembly

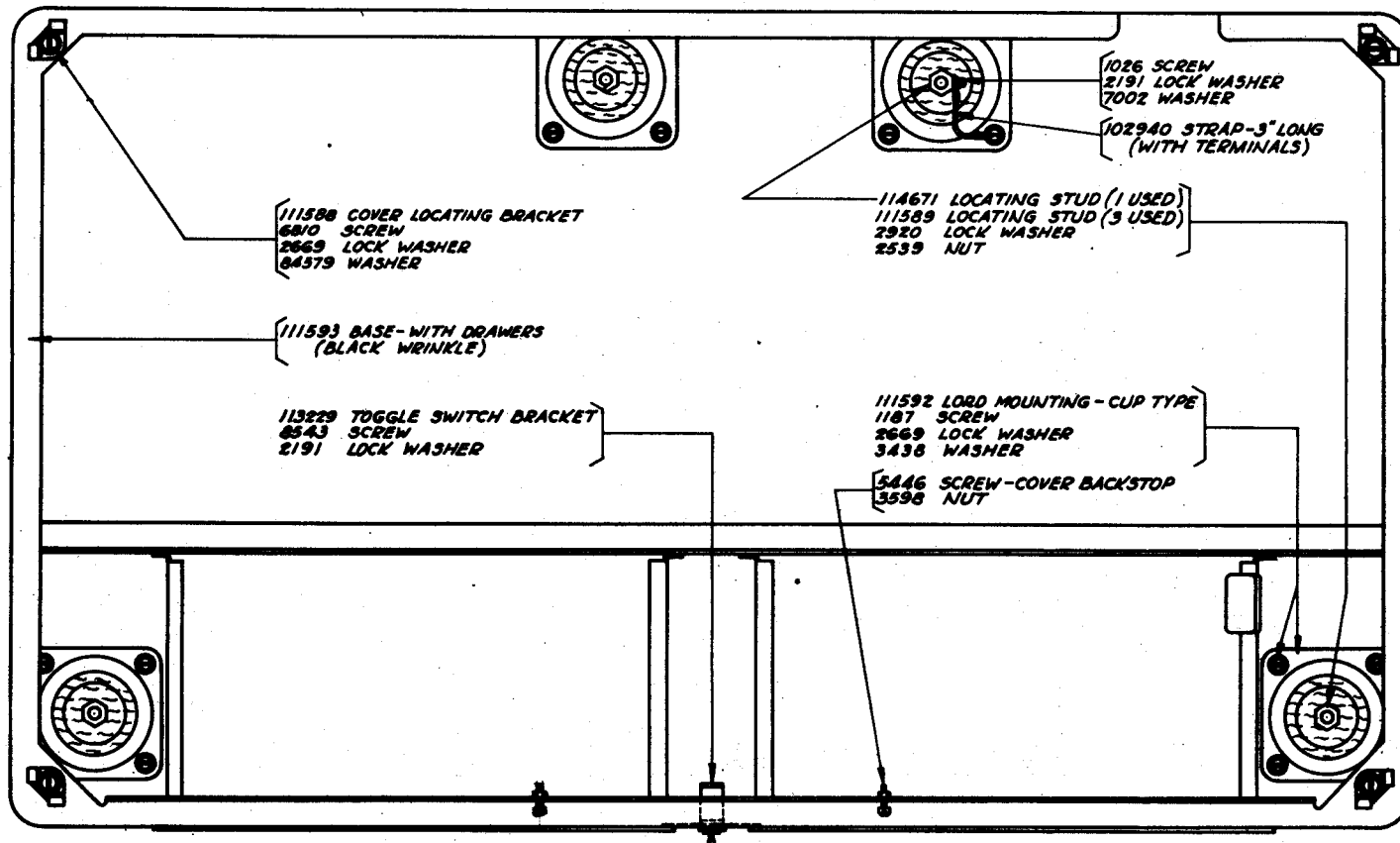
The 114316 spring (approximately 1/2" length and 19/32" inside diameter) has been replaced by a 6993 spring which has an over-all length of approximately 3/4 of an inch with an inside diameter of 25/32 of an inch.

* * *

ALPHABETICAL INDEX

DESCRIPTION	PAGE NO.
Base (Assem.)	1
Base Channel	2,3
Base Frame (Assem.)	2
Base Plate - Reperforator	6
Block - Connection	3,6
Block - Terminal	2
C180 Cover	11
Cables	4
Cable (Assem.)	4
Cam Sleeve (Assem.)	6
Chad Chutes	5,7
Clutch Lever	6
Code Punch Block (Assem.)	5
Code Punch Bracket (Assem.)	8
Condenser	2
Connection Blocks	3,6
Cord (Assem.) - Shielded	4
Countershaft	2
Cover (Assem.)	11
Foot - Metal	1
Gear - Countershaft	2
Gear - Main Shaft	6
Key	3
Lamp	3
Lamp and Switch Bracket (Assem.)	3
Levers - "T"	9
Levers - Transfer	8
Levers - Vertical Stop	8
Line Jack Contact Spring (Assem.)	3
Lock Bail Parts	5
Lord Mounting - Cup Type	1

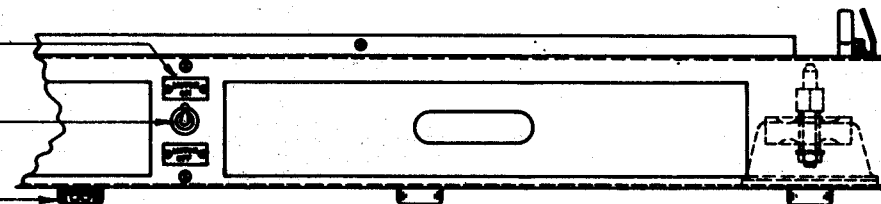
DESCRIPTION	PAGE NO.
Magnet Coil - Selector	9
Main Casting - Reperforator	5,6
Main Shaft (Assem.)	6
Main Shaft Bracket (Assem.)	6
Motor Support	2
Motor - Synchronous	10
Motor Unit (Assem.)	10
MU31 Motor Unit	10
Name Plates	1
Numerical Index	12
Pinion - Motor	2
Plugs - Cord and Cable	4
Prepunch Unit (Assem.)	7
Punch Bail	8
Punch Fingers	8
Punch Lever	5,6
Punch Link	5
Range Scale (Assem.)	9
Selector Unit (Assem.)	9
Strap - Ground	1,2,3,10
Switches - Toggle	1,3
Synchronous Motor	10
"T" Levers	9
Tape Container (Assem.) - With Tape-out Contacts	4
Tape-Out Contacts (Assem.)	4
Terminal Block	2
Toggle Switch	1,3
Transfer Bearing	6
Transfer Levers	8
Vertical Stop Levers	8



105448 NAME PLATE (MOTOR ON)
105449 NAME PLATE (MOTOR OFF)
87636 SCREW
34-11 NUT

105635 TOGGLE SWITCH (ASSEM.)
(INCLUDES 91683 NUT-HEX.
AND 91684 NUT-RING.)

99817 FOOT - METAL
1121 SCREW
2669 LOCK WASHER



BASE (ASSEM.) - BLACK WRINKLE
SEE PAGE 2 FOR BASE FRAME (ASSEM.)
PART OF MRPEB1B1

111549 BASE CHANNEL
(SEE PAGE 3 FOR BOTTOM VIEW)

111560 COUNTERSHAFT

111579 GEAR-23T.
82440 SCREW
2191 LOCK WASHER

78579 WASHER

111558 BEARING BRACKET

6810 SCREW
2669 LOCK WASHER
110686 BALL BEARING

100858 SCREW
7002 WASHER
3640 LOCK WASHER
3599 NUT
USED TO HOLD
BALL BEARINGS
IN PLACE.

USED ON BOTH ENDS OF EACH SHAFT

86433 SCREW
2920 LOCK WASHER

111562 BAR-SIDE (BOTH ENDS)

2201 NUTS

113215 BEARING PAD
1121 SCREW
2669 LOCK WASHER

86433 SCREW
2920 LOCK WASHER

111590 HANDLE

113217 UNIT PAD-REAR
1121 SCREW
2669 LOCK WASHER

111548 GUARD
3598 NUT
2191 LOCK WASHER
7002 WASHER

113807 GEAR-21T.
7481 HUB
3446 SCREW
2191 LOCK WASHER } FOR GEAR
82440 SCREW
2191 LOCK WASHER } FOR HUB

LAMP & SWITCH BRACKET (ASSEM.)
(SEE PAGE 3)

113214 UNIT PAD-FRONT
1121 SCREW
2669 LOCK WASHER

111563 BAR-FRONT

111564 BAR-REAR

111561 MOTOR SUPPORT
78301 SCREW
2669 LOCK WASHER

78301 SCREW
2669 LOCK WASHER
111582 SPACER (USED UNDER
MOTOR PLATE)

78301 SCREW
2669 LOCK WASHER

111566 BLOCK
85471 SCREW
2669 LOCK WASHER

111534 TAPE CONTAINER (ASSEM.)
(SEE PAGE 4)

LINE JACK CONTACT
SPRING (ASSEM.)
(SEE PAGE 3)

91744 SCREW
81774 WASHER

91746 TERMINAL BLOCK
(26 TERMINALS)

1169 SCREW
2191 LOCK WASHER
111567 POST-HEX.
(UNDER TERM. BLOCK)

113478 CABLE CLAMP
6810 SCREW
2669 LOCK WASHER

96212-BK WIRE STRAP (4)
82474 TERMINAL
6746 SCREW
2191 LOCK WASHER
7002 WASHER

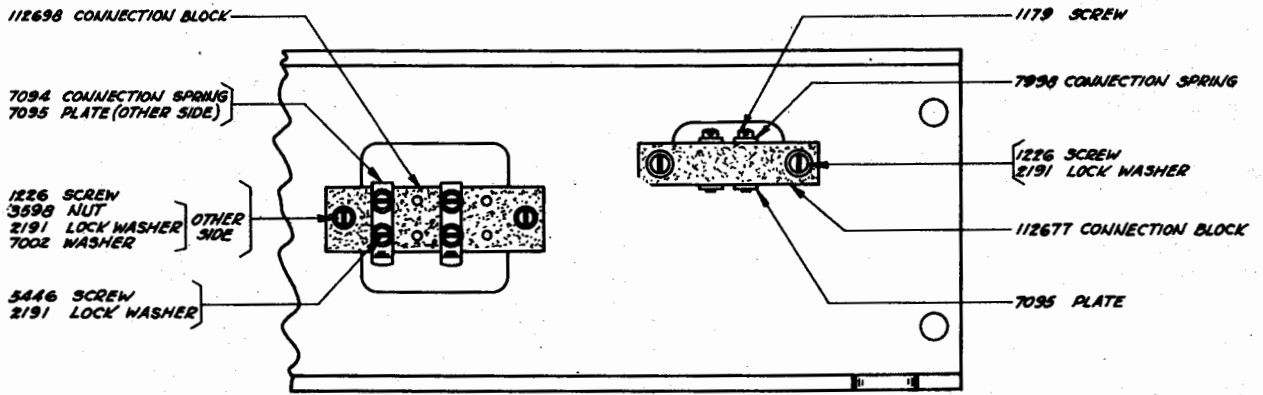
113806 PINION-8T

100646 CONDENSER-1MF.
1038 SCREW
2191 LOCK WASHER
7002 WASHER

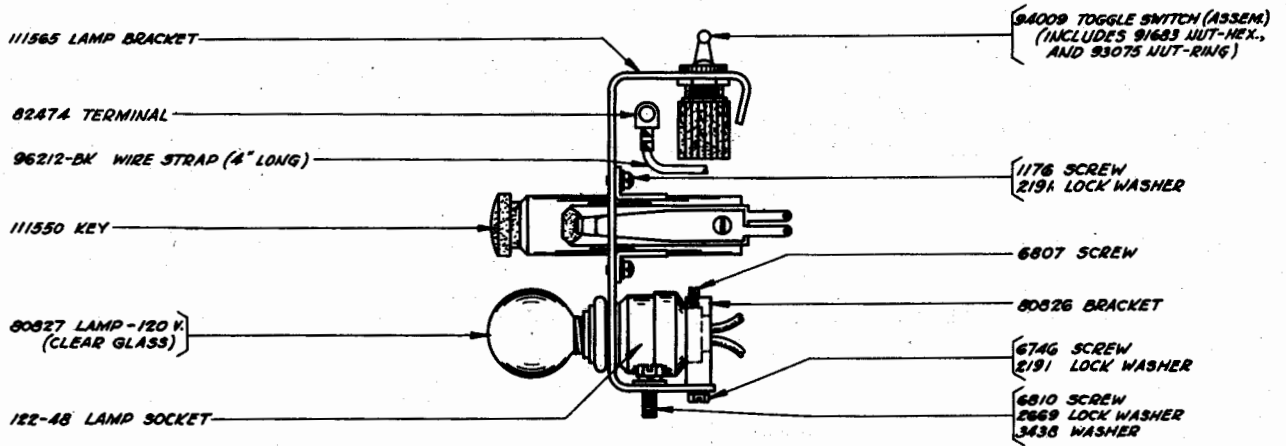
7094 CONNECTION SPRING
1038 SCREW
2191 LOCK WASHER

7602 COMPRESSION SPRING
(USED IN EACH LEFT HAND LAMP
BRACKET MOUNTING HOLE)

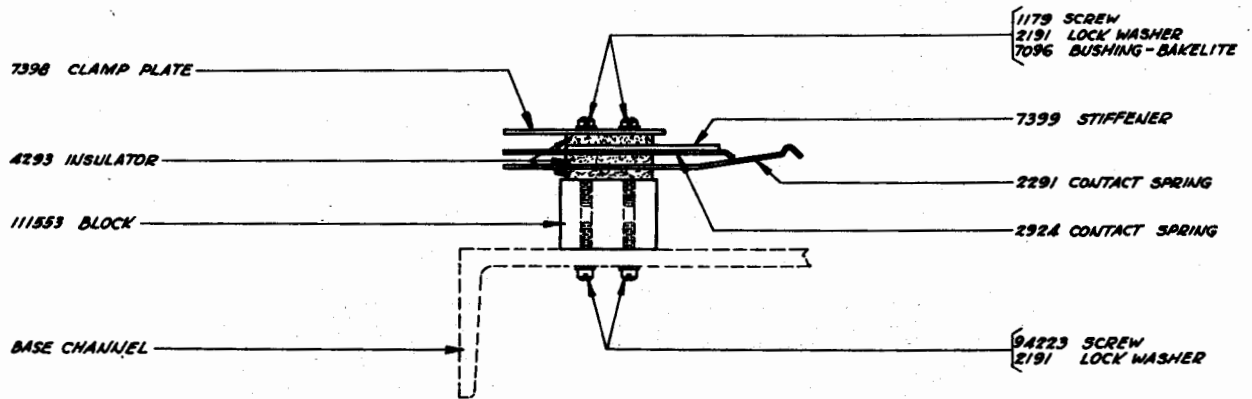
BASE FRAME (ASSEM.) - TOP VIEW
SEE PAGE 1 FOR BASE (ASSEM.)
PART OF MRPEB1



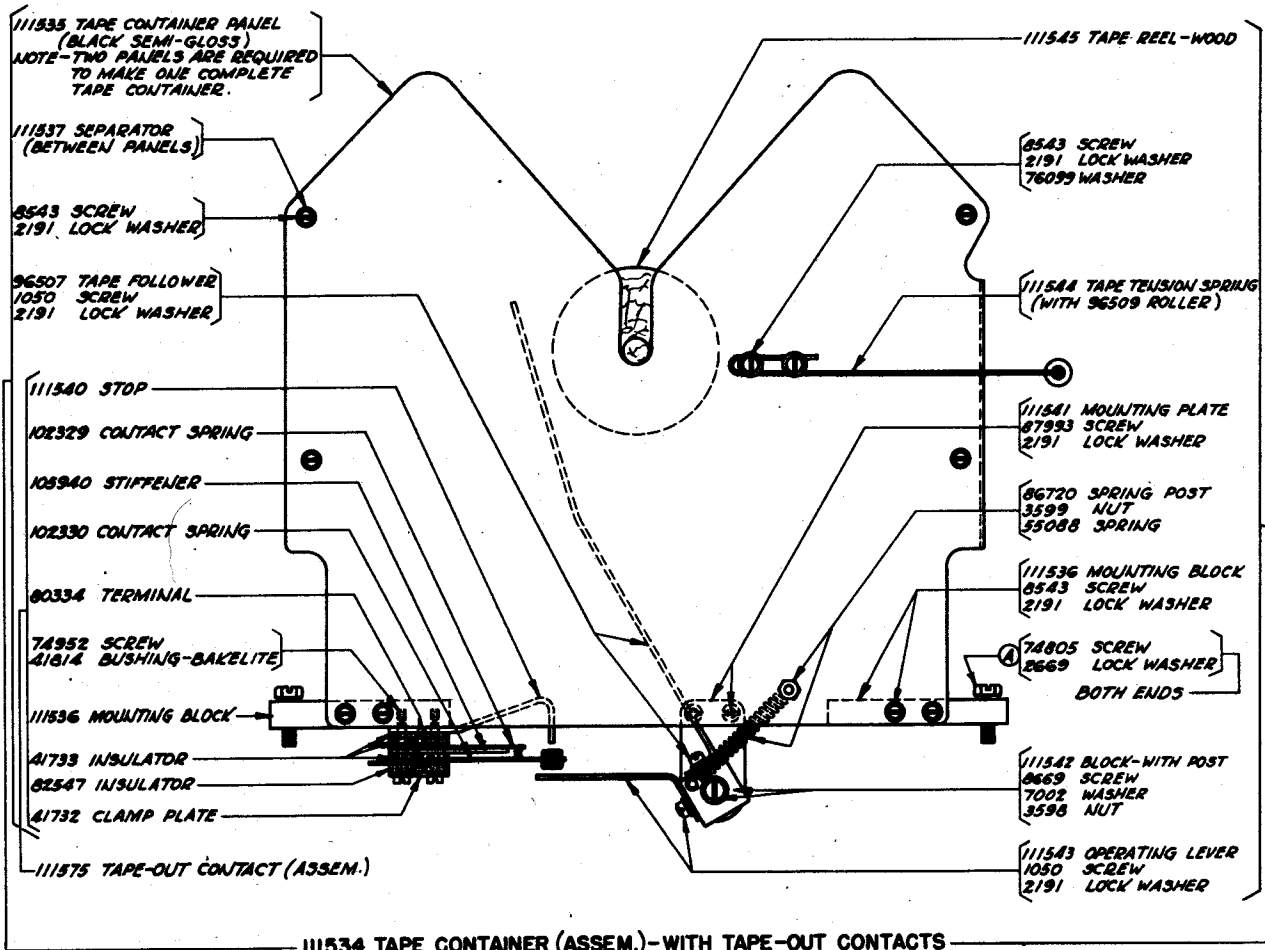
PARTIAL BOTTOM VIEW OF BASE CHANNEL
SHOWING CONNECTION BLOCKS
PART OF MRPEB1B1



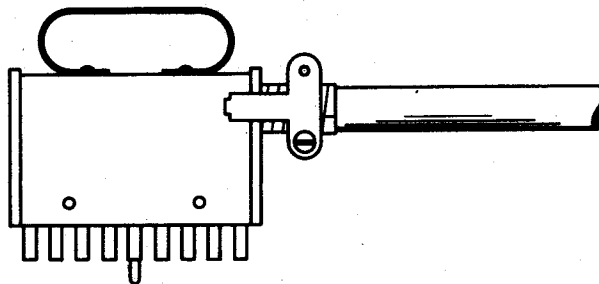
LAMP & SWITCH BRACKET (ASSEM.)
PART OF MRPEB1B1



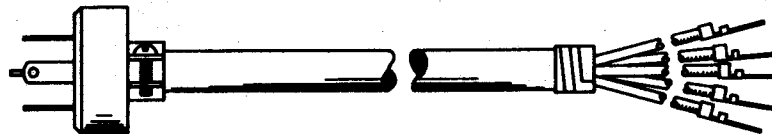
LINE JACK CONTACT SPRING (ASSEM.)
PART OF MRPEB1B1



111534 TAPE CONTAINER (ASSEM.) - WITH TAPE-OUT CONTACTS
(EXCLUDES PARTS MARK (A))
PART OF MRPEB1B1

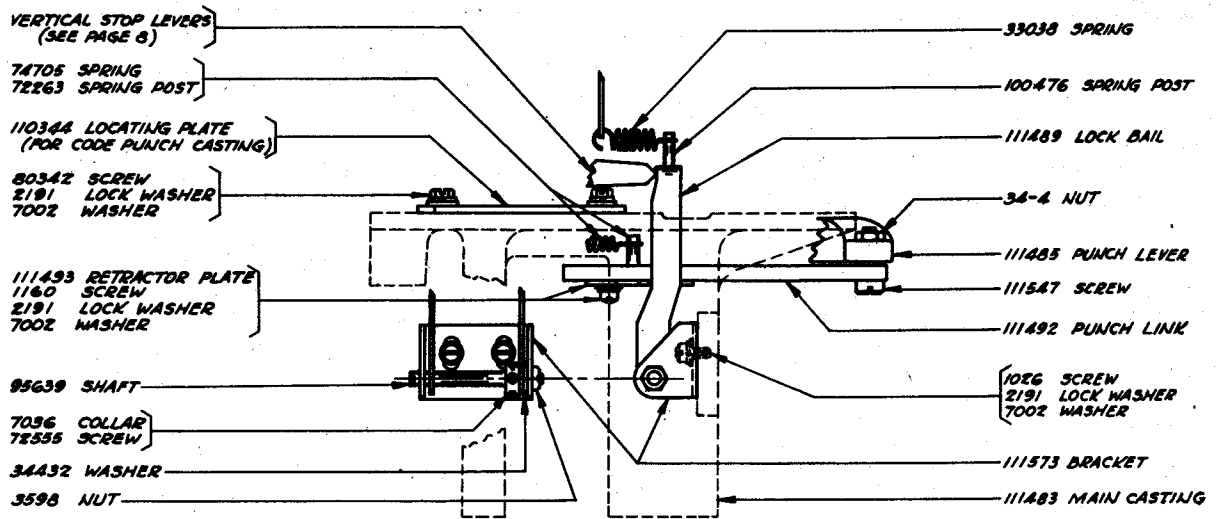


114123 CABLE (ASSEM.)
(INCLUDES 114126 PLUG (27 PRONG) & 82474 TERMINALS)
PART OF MRPEB1B1

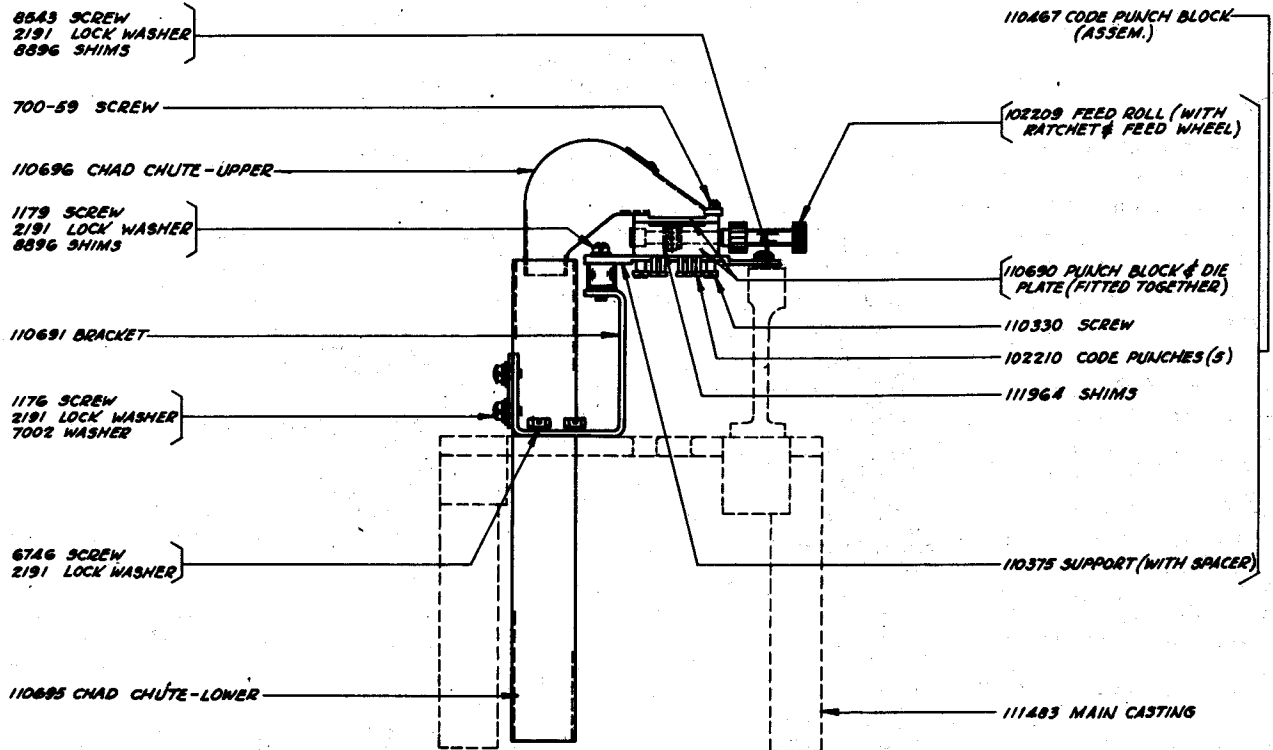


95052 CORD (ASSEM.) - SHIELDED
(INCLUDES 95064 PLUG (4 PRONG) & 82474 TERMINALS)
PART OF MRPEB1B1

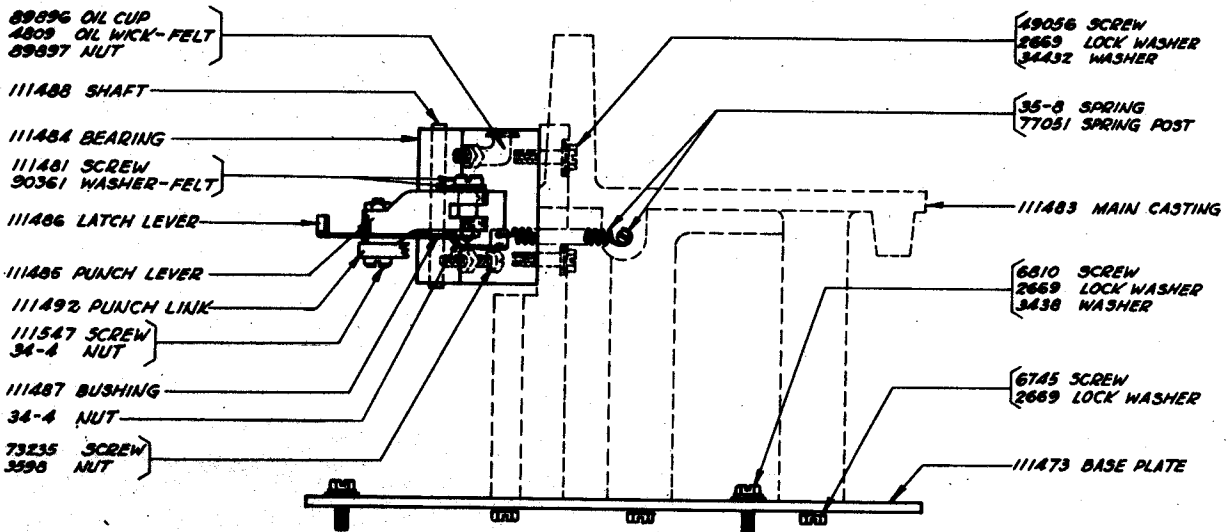
- 113808 CABLE - LINE
 - 113809 CABLE - POWER (LARGE)
 - 114681 CABLE - POWER (SMALL)
- W.D.-2416



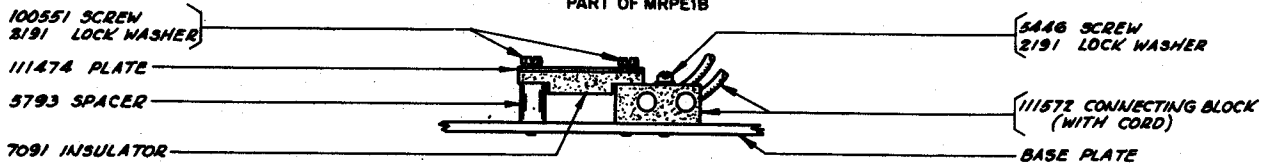
MAIN CASTING-RIGHT SIDE VIEW
SHOWING PUNCH LINK & LOCK BAIL PARTS
PART OF MRPE1B



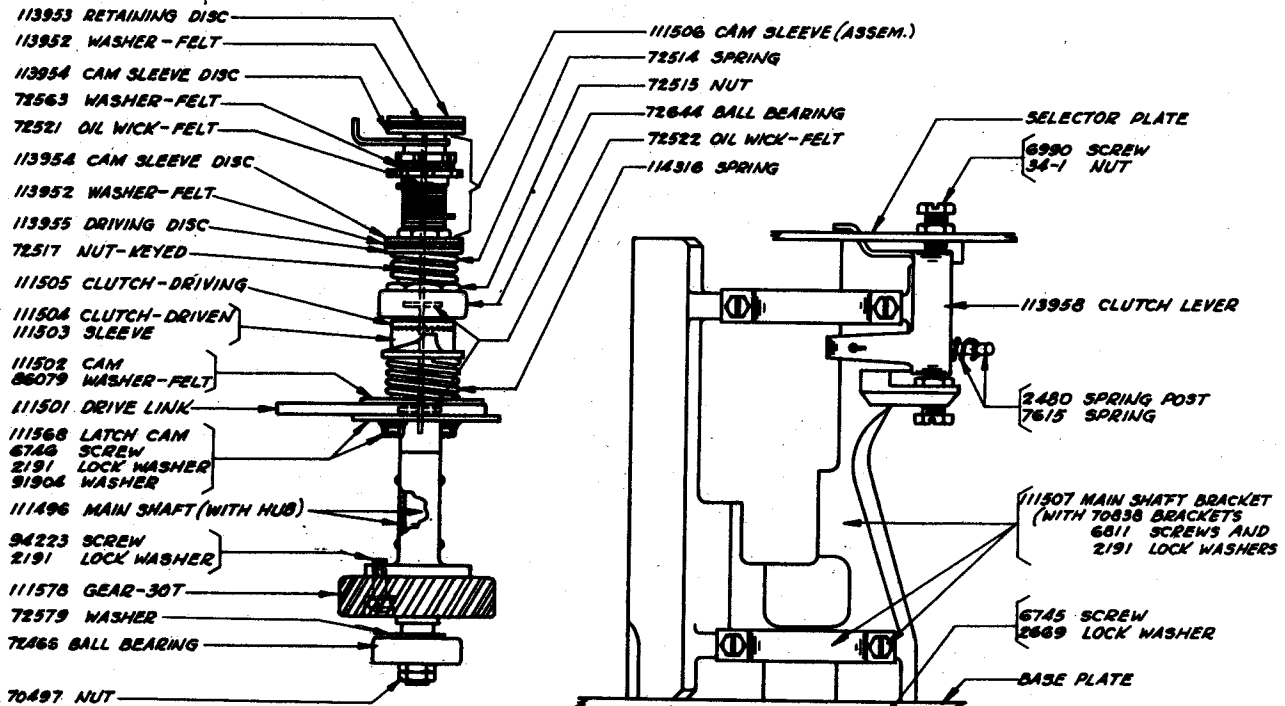
MAIN CASTING-FRONT VIEW
SHOWING CODE PUNCH BLOCK & CHAD CHUTES
PART OF MRPE1B



MAIN CASTING-LEFT SIDE VIEW
SHOWING PUNCH LEVER, TRANSFER BEARING & BASE PLATE
PART OF MRPE1B

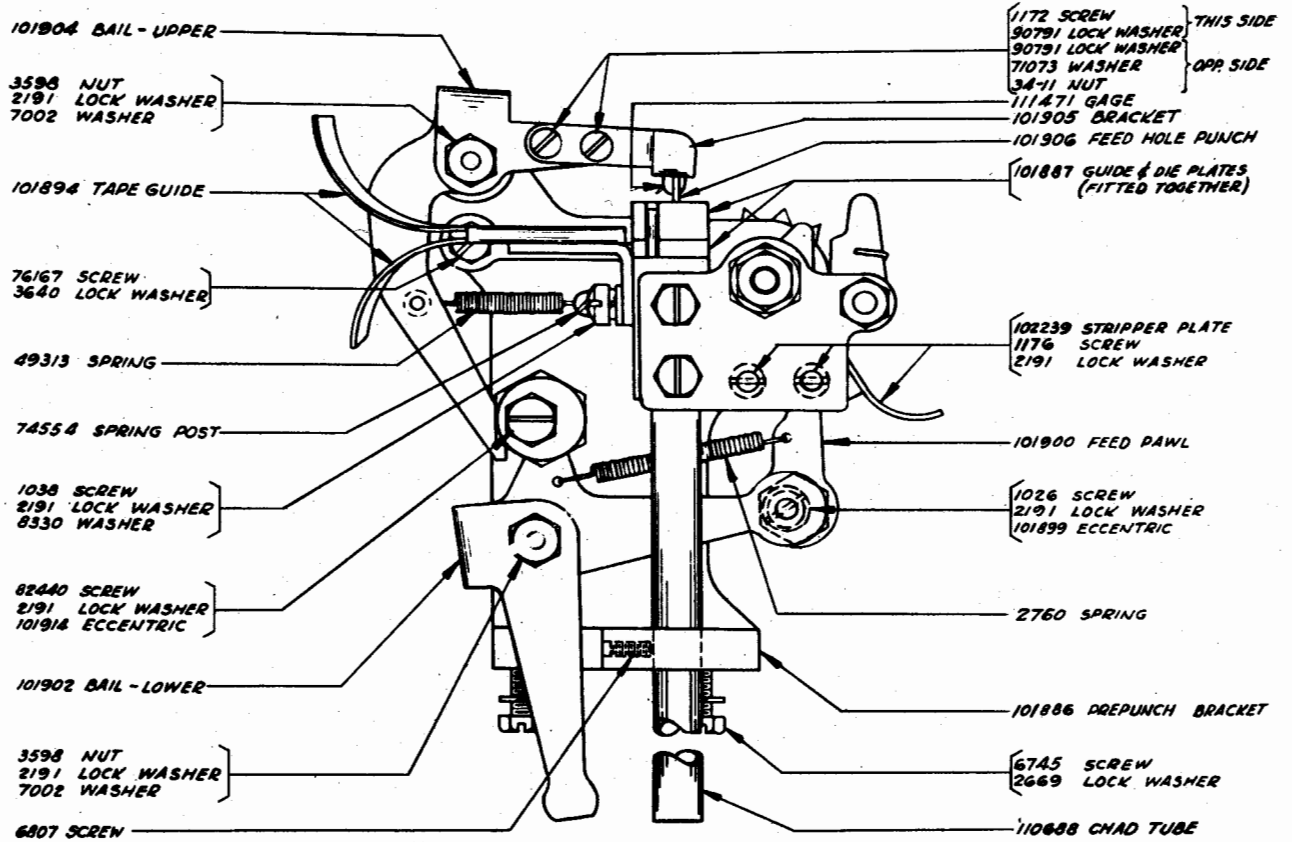


CONNECTING BLOCK (ASSEM.)
PART OF MRPE1B

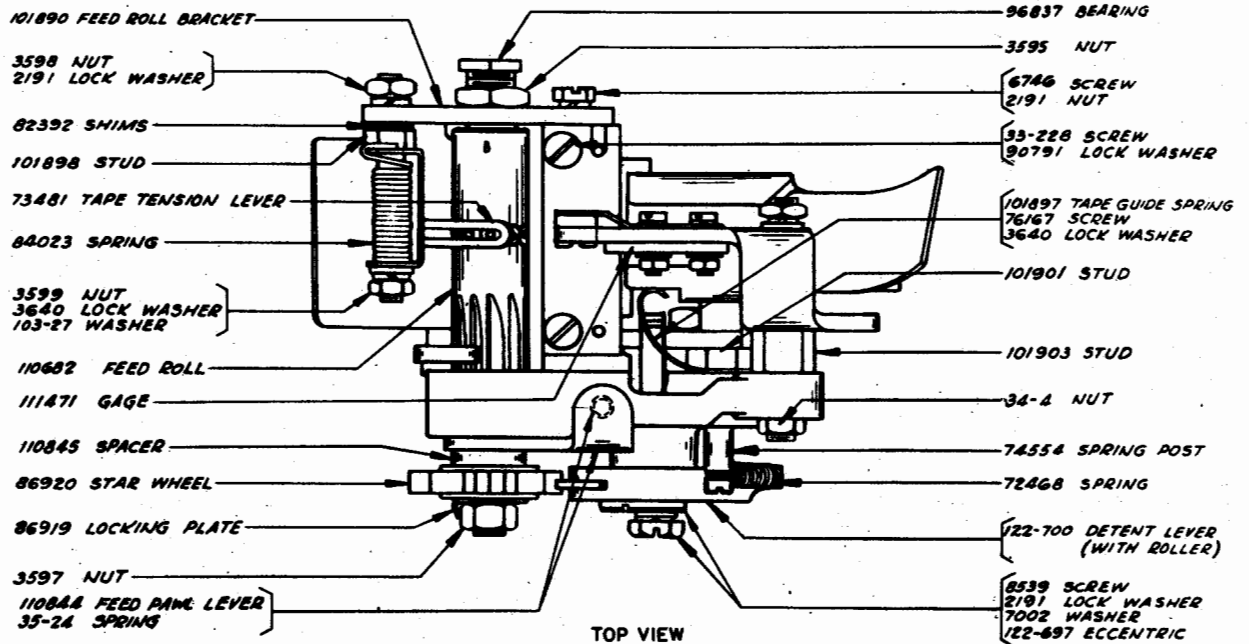


MAIN SHAFT (ASSEM.)
PART OF MRPE1B

MAIN SHAFT BRACKET (ASSEM.)
PART OF MRPE1B

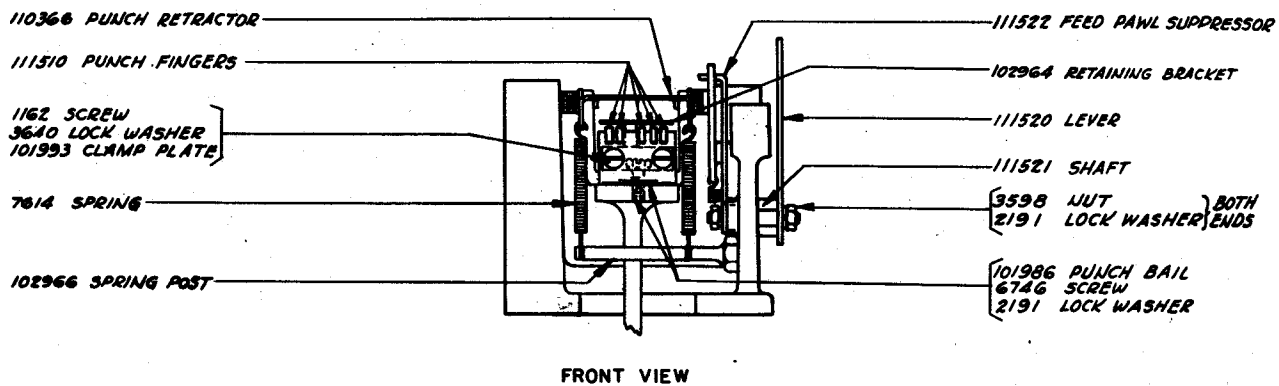
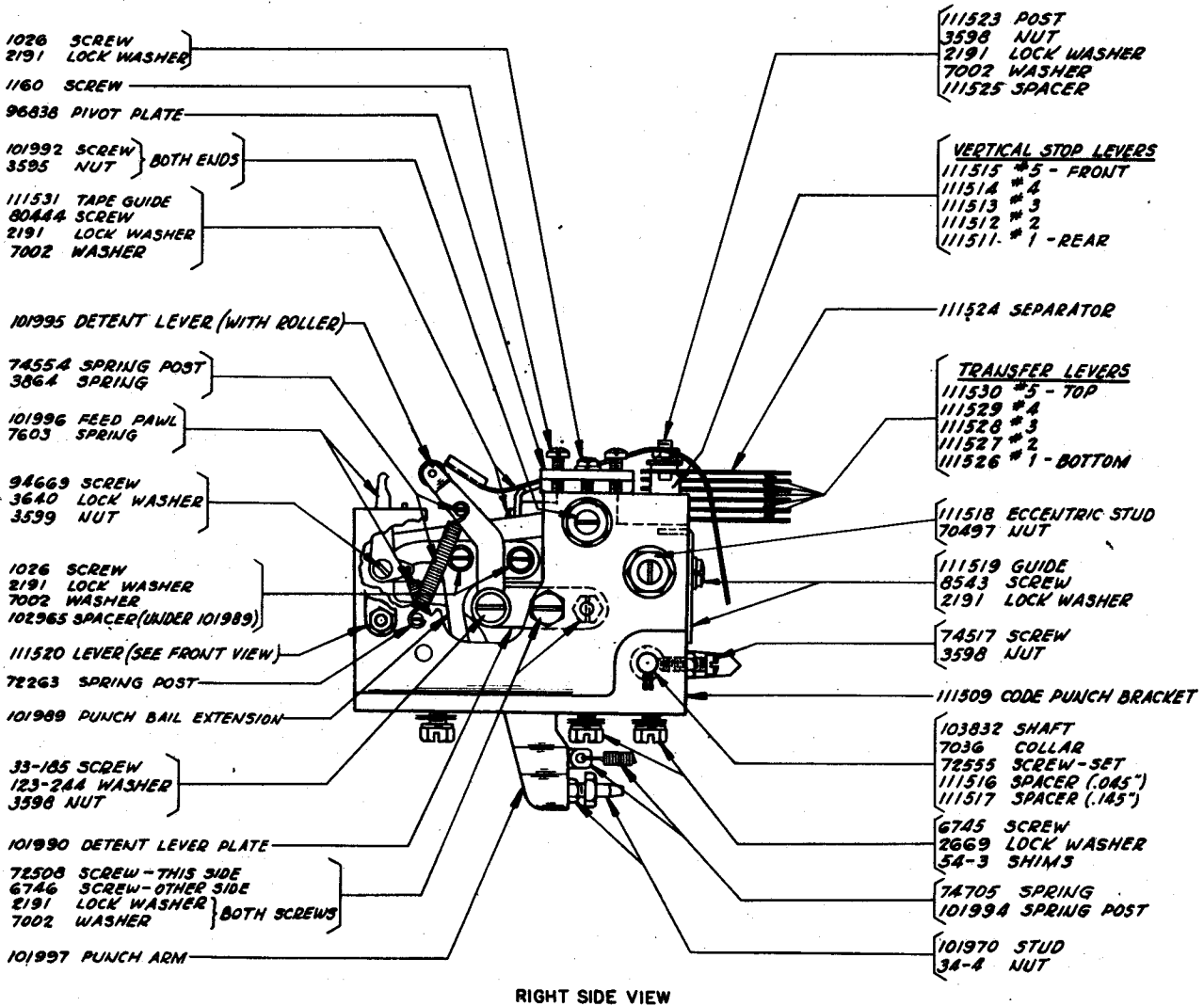


REAR VIEW

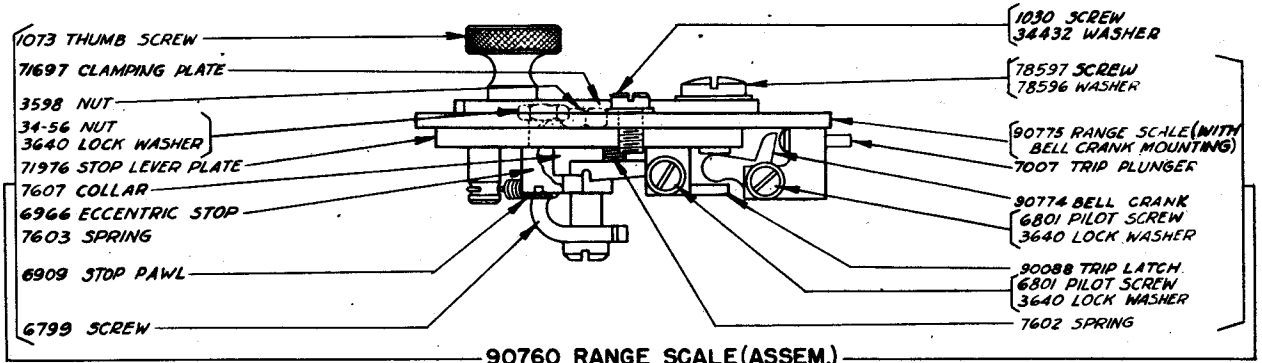


TOP VIEW

PREPUNCH UNIT (ASSEM.)
PART OF MRPE1B

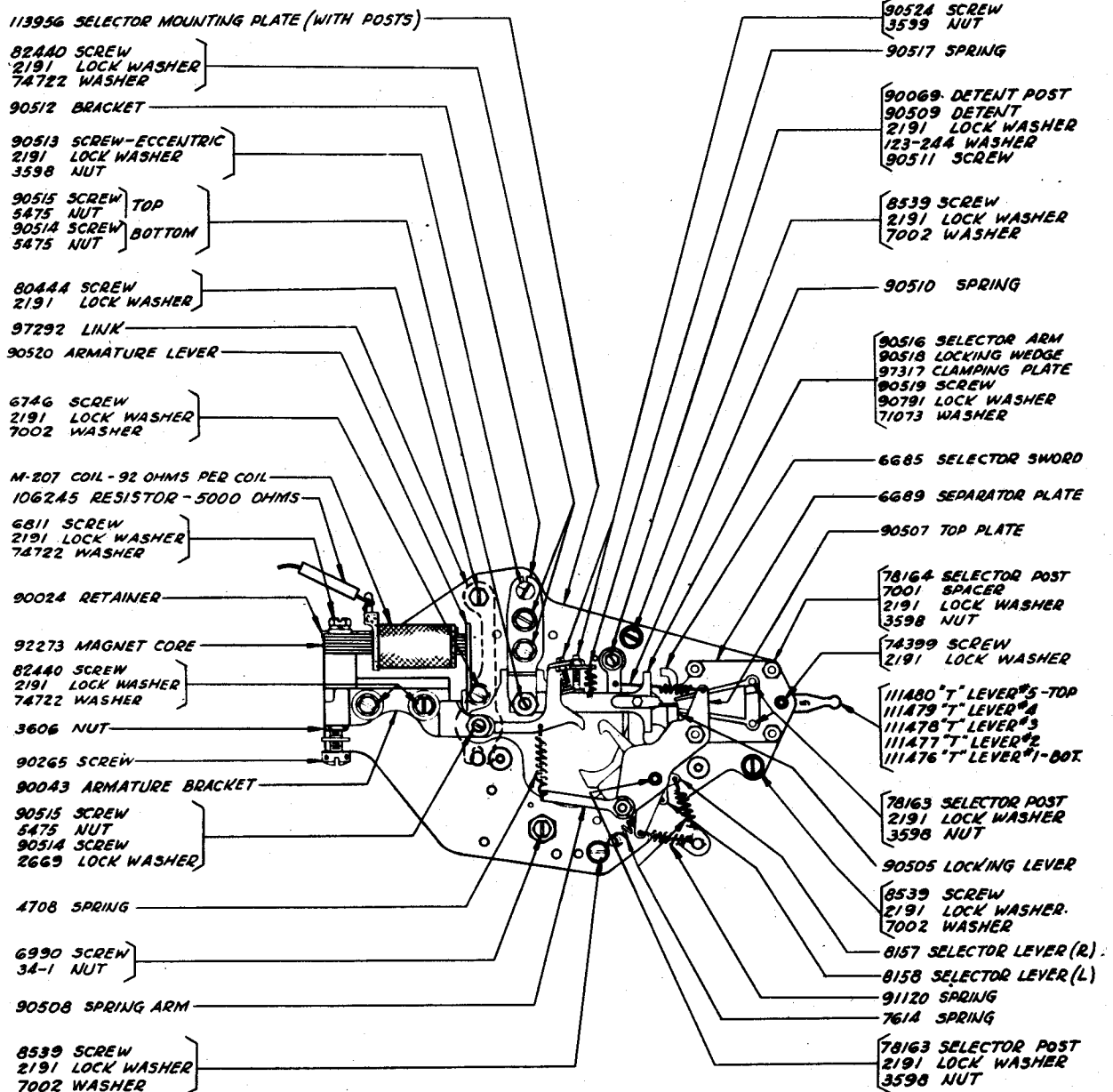


CODE PUNCH BRACKET (ASSEM.)
(CODE PUNCH BLOCK REMOVED-SEE PAGE 5)
PART OF MRPE1B



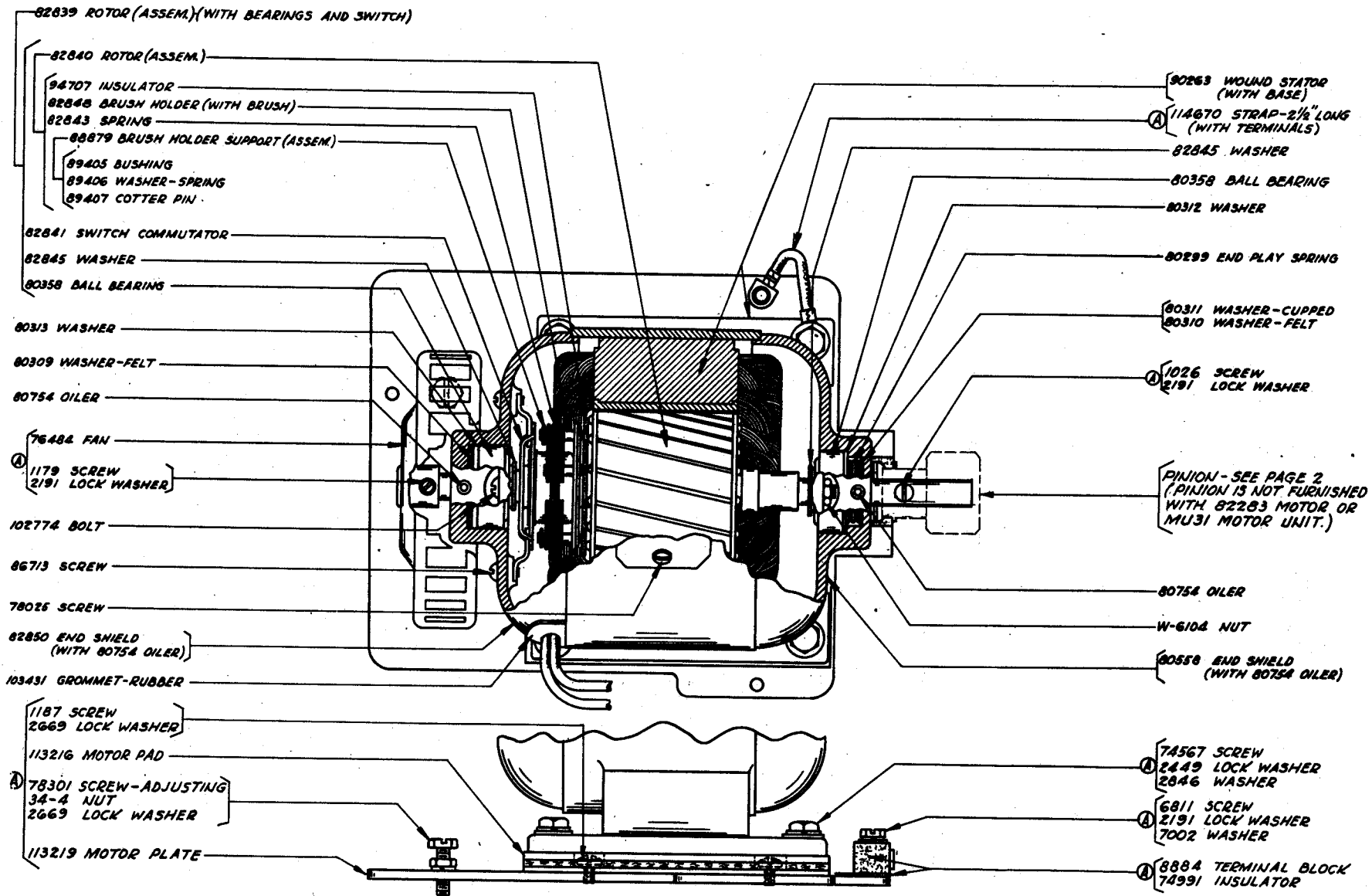
90760 RANGE SCALE (ASSEM.)

PART OF MRPEIB

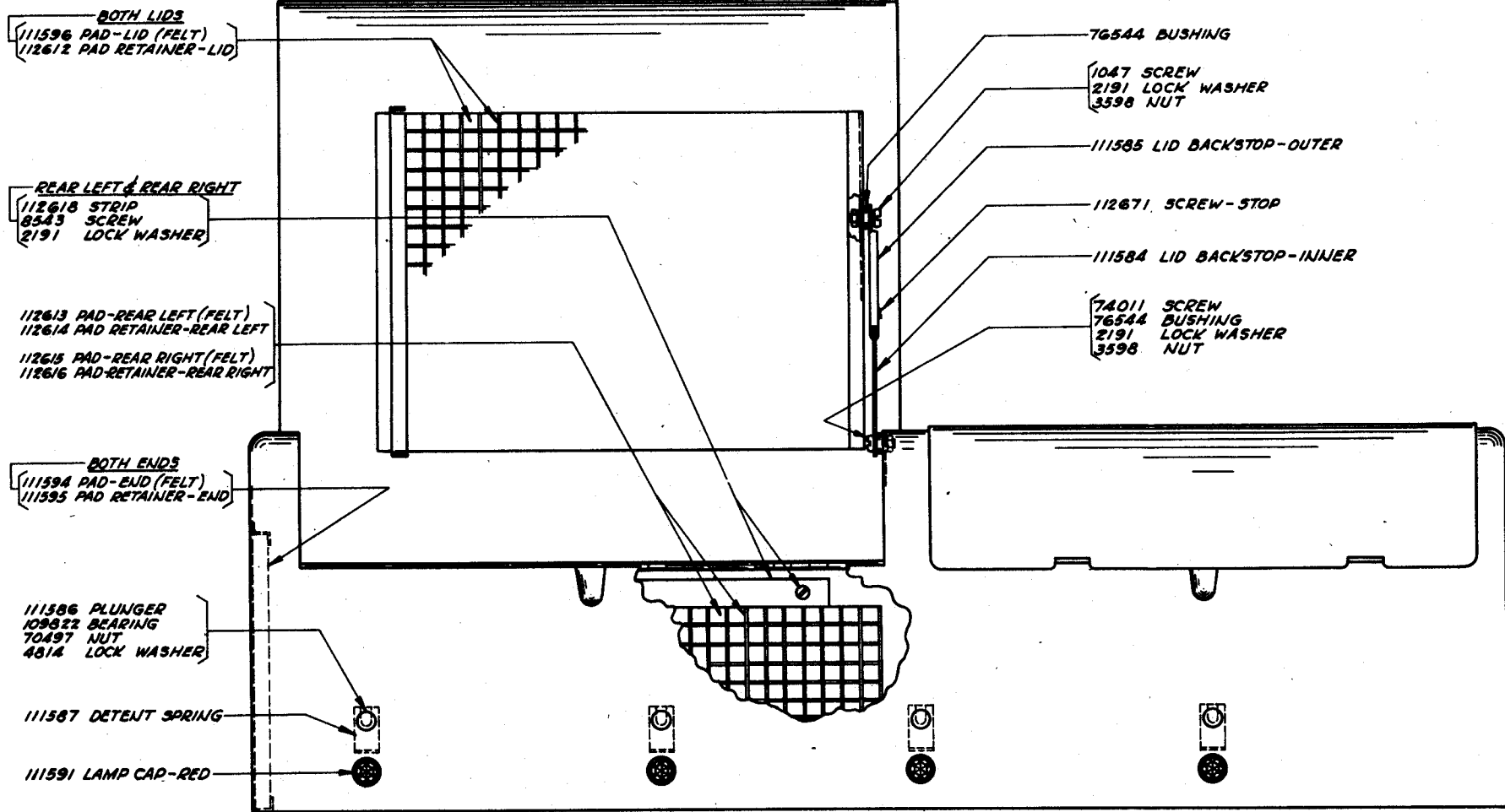


SELECTOR UNIT (ASSEM.)

PART OF MRPEIB



82283 SYNCHRONOUS MOTOR, 1/40 H.P., 110 V., 60 CYCLE A.C. (G.E. MODEL 5SH25AB11B) - EXCLUDES PARTS MARKED (A)
 MU31 MOTOR UNIT, INCLUDES ALL PARTS SHOWN ON THIS PAGE.



C180 COVER (ASSEM)-BLACK WRINKLE
 FRONT VIEW - WITH LEFT LID OPEN

NUMERICAL INDEX

6180	Cover (Assem.) - Black Wrinkle, 11	7091	Insulator, 6	80444	Screw (6-40 x 1/4), 8, 9
M-207	Coil - 92 Ohms, 9	7094	Connection Spring, 2, 3	80558	End Shield (with 80754 Oiler), 10
MU31	Motor Unit, 10	7095	Plate, 3	80754	Oiler, 10
W-6104	Nut (.164-32 Hex.), 10	7096	Bushing - Bakelite, 3	80775	Range Scale (with Bell Crank Mounting), 9
33-185	Screw (6-40 x 5/8), 8	7398	Clamp Plate, 3	80826	Bracket, 3
33-228	Screw (2-56 x 3/8), 7	7399	Stiffener, 3	80827	Lamp - 120V, 3
34-1	Nut (1/4-32 Hex.), 6, 9	7481	Hub, 2	81774	Washer, 2
34-4	Nut (10-32 Hex.), 5, 6, 7, 8, 10	7602	Spring, 2, 9	82283	Synchronous Motor, 1/40 H.P., 110V., 60 Cycle A.C., 10
34-11	Nut (2-56 Hex.), 1, 7	7603	Spring, 8, 9	82392	Shim, 7
34-56	Nut (4-40 Hex.), 9	7607	Collar, 9	82440	Screw (6-40 x 7/16), 2, 7, 9
35-8	Spring, 6	7614	Spring, 8, 9	82474	Terminal, 2, 3, 4
35-24	Spring, 7	7615	Spring, 6	82574	Insulator, 4
54-3	Shim, 8	7998	Connection Spring, 3	82839	Rotor (Assem.) (with Bearings and Switch), 10
103-27	Washer, 7	8157	Selector Lever (R), 9	82840	Rotor (Assem.), 10
122-48	Lamp Socket, 3	8158	Selector Lever (L), 9	82841	Switch Commutator, 10
122-697	Eccentric, 7	8330	Washer, 7	82843	Spring, 10
122-700	Detent Lever (With Roller), 7	8539	Screw (6-40 x 1/2), 7, 9	82845	Washer, 10
123-244	Washer, 8, 9	8543	Screw (6-40 x 1/4), 1, 4, 5, 8, 11	82848	Brush Holder (with Brush), 10
700-59	Screw (2-56 x 1/8), 5	8669	Screw (6-40 Shoulder), 4	82850	End Shield (with 80754 Oiler), 10
1026	Screw (6-40 x 3/8), 1, 5, 7, 8	8884	Terminal Block, 10	84023	Spring, 7
1030	Screw (6-40 Shoulder), 9	8896	Shims, 5	84579	Washer, 1
1038	Screw (6-40 x 9/32), 2, 7	33038	Spring, 5	85471	Screw (10-32 x 1"), 2
1047	Screw (6-40 Shoulder), 11	34432	Washer, 5, 6, 9	86079	Washer - Felt, 6
1050	Screw (6-40 x 7/32), 4	41732	Clamp Plate, 4	86433	Screw (3/16 x 40 Set), 2
1073	Screw (6-40 Thumb), 9	41733	Insulator, 4	86713	Screw (4-48 x 5/16), 10
1121	Screw (10-32 x 3/8), 1, 2	41814	Bushing - Bakelite, 4	86720	Spring Post, 4
1160	Screw (6-40 x 5/16), 5, 8	49056	Screw (10-32 x 7/8), 6	86919	Locking Plate, 7
1162	Screw (4-40 x 1/4), 8	49313	Spring, 7	86920	Star Wheel, 7
1169	Screw (4-40 x 1/4), 8	55088	Spring, 4	87636	Screw (2-56 x 3/16), 1
1172	Screw (6-40 x 7/16), 2	70497	Nut (5/16-32 Hex.), 6, 8, 11	87993	Screw (6-40 x 5/32), 4
1176	Screw (2-56 x 5/16), 7	70838	Bracket, 6	88379	Brush Holder Support (Assem.), 10
1179	Screw (6-40 x 3/16), 3, 5, 7	71073	Washer, 7, 9	89405	Bushing, 10
1187	Screw (6-40 x 5/8), 3, 5, 10	71697	Clamping Plate, 9	89406	Washer - Spring, 10
1226	Screw (10-32 x 1/4), 1, 10	71976	Stop Lever Plate, 9	89407	Cotter Pin, 10
2191	Screw (6-40 x 3/4), 3	72263	Spring Post, 5, 8	89896	Oil Cup, 6
2201	Lock Washer, 1 through 11	72466	Ball Bearing, 6	89897	Nut (10-32 Hex.), 6
2291	Nut (5/16-32 x 7/16), 2	72468	Spring, 7	90024	Retainer, 9
2449	Contact Spring, 3	72508	Screw (6-40 x 3/4), 8	90043	Armature Bracket, 9
2480	Lock Washer, 10	72514	Spring, 6	90069	Detent Post, 9
2539	Spring Post, 6	72515	Spring, 6	90088	Trip Latch, 9
2669	Nut (3/8-32 Hex.), 1	72517	Nut (5/16-32 Hex.), 6	90263	Wound Stator (with Base), 10
2760	Lock Washer, 1, 2, 3, 4, 6, 8, 10	72521	Nut (5/16-32 Left Hex. Keyed), 6	90265	Screw (6-40 Special), 9
2846	Spring, 7	72522	Oil Wick - Felt, 6	90361	Washer - Felt, 6
2920	Washer, 10	72522	Oil Wick - Felt, 6	90505	Locking Lever, 9
2924	Lock Washer, 1, 2	72555	Screw (6-40 Set), 5, 8	90507	Top Plate, 9
3438	Contact Spring, 3	72563	Washer - Felt, 6	90508	Spring Arm, 9
3595	Washer, 1, 3, 6	72579	Washer, 2, 6	90509	Detent, 9
3597	Nut (1/4-32 Hex.), 7, 8	72644	Ball Bearing, 6	90510	Spring, 9
3598	Nut (5/32-40 Hex.), 7	73235	Screw (6-40 x 7/8), 6	90511	Screw (6-40 x 13/16), 9
	Nut (6-40 Hex.), 1, 2, 3, 4, 5, 6, 7, 8, 9, 11	73481	Tape Tension Lever, 7	90512	Bracket, 9
3599	Nut (4-40 Hex.), 2, 4, 7, 8, 9	74011	Screw (6-40 Shoulder), 11	90513	Screw (6-40 Eccentric), 9
3606	Nut (6-40 Hex.), 9	74399	Screw (6-40 Pilot), 9	90514	Screw (3/16-40 Pivot), 9
3640	Lock Washer, 2, 7, 8, 9	74517	Screw (6-40 x 1/2), 8	90515	Screw (3/16-40 Pivot), 9
3864	Spring, 8	74554	Spring Post, 7	90516	Selector Arm, 9
4293	Insulator, 3	74567	Screw (1/4-20 x 33/64), 10	90517	Spring, 9
4708	Spring, 9	74705	Spring, 5, 8	90518	Locking Wedge, 9
4809	Oil Wick - Felt, 6	74722	Washer, 9	90519	Screw (2-56 x 5/32), 9
4814	Lock Washer, 11	74805	Screw (10-32 x 3/4), 4	90520	Armature Lever, 9
5446	Screw (6-40 x 9/16), 1, 2, 6	74952	Screw (4-40 x 5/8), 4	90524	Screw (4-40 x 17/32), 9
5475	Nut (3/16-40 Hex.), 9	74991	Insulator, 10	90760	Range Scale (Assem.), 9
5793	Spacer, 6	76099	Washer, 4	90774	Bell Crank, 9
6685	Selector Sword, 9	76167	Screw (4-40 x 3/16), 7	90791	Lock Washer, 7, 9
6689	Separator Plate, 9	76484	Fan, 10	91120	Spring, 9
6745	Screw (10-32 x 1/2), 6, 7, 8	76544	Bushing, 11	91683	Nut (15/32-32 Hex.), 1, 3
6746	Screw (6-40 x 5/16), 2, 3, 5, 6, 7, 8, 9, 10	77051	Spring Post, 6	91684	Nut (15/32-32 Ring), 1
		78025	Screw (4-48 x 3/16), 10	91744	Screw (6-40 x 13/64), 2
6799	Screw (6-40 Shoulder), 9	78163	Selector Post, 9	91746	Terminal Block (26 Terminal), 2
6801	Screw (4-40 Pilot), 9	78164	Selector Post, 9	91904	Washer, 6
6807	Screw (6-40 Set), 3, 7	78301	Screw (10-32 x 5/8), 2, 10	92273	Magnet Core, 9
6810	Screw (10-32 x 3/8), 1, 2, 3, 6, 10	78596	Washer, 9	93075	Nut (15/32-32 Ring), 3
6811	Screw (6-40 x 5/8), 6, 9	78597	Screw (10-32 Shoulder), 9	94009	Toggle Switch (Assem.) Includes 91683 Nut-Hex., and 93075 Nut-Ring, 3
6909	Stop Pawl, 9	80299	End Play Spring, 10		
6966	Eccentric Stop, 9	80309	Washer - Felt, 10		
6990	Screw (1/4-32 Pilot), 6, 9	80310	Washer - Felt, 10		
7001	Spacer, 9	80311	Washer - Cupped, 10		
7002	Washer, 1, 2, 3, 4, 5, 7, 8, 9	80312	Washer, 10		
7007	Trip Plunger, 9	80313	Washer, 10		
7036	Collar, 5, 8	80334	Terminal, 4		
		80342	Screw (6-40 x 23/64), 5		
		80358	Ball Bearing, 10		

NUMERICAL INDEX

94223	Screw (6-40 x 1/2),3,6	110467	Code Punch Block (Assem.),5	111545	Tape Reel - Wood,4
94669	Screw (4-40 Shoulder),8	110682	Feed Roll,7	111547	Screw (10-32 Shoulder),5,6
94707	Insulator,10	110686	Ball Bearing,2	111548	Guard,2
95052	Cord (Assem.) - Shielded Includes 95064 Plug (4 Prong) and 82474 Terminals,4	110688	Chad Tube,7	111549	Base Channel,2
95064	Plug (4 Prong),4	110690	Punch Block and Die Plate (Fitted Together),5	111550	Key,3
95639	Shaft,5	110691	Bracket,5	111553	Block,3
96212-BK	Wire Strap (4" Long),2,3	110696	Chad Chute - Upper,5	111558	Bearing Bracket,2
96507	Tape Follower,4	110844	Feed Pawl Lever,7	111560	Countershaft,2
96509	Roller,4	110845	Spacer,7	111561	Motor Support,2
96837	Bearing,7	111471	Gage,7	111562	Bar - Side,2
96838	Pivot Plate,8	111473	Base Plate,6	111563	Bar - Front,2
97292	Link,9	111474	Plate,6	111564	Bar - Rear,2
97317	Clamping Plate,9	111476	"T" Lever #1,9	111565	Lamp Bracket,3
99817	Foot - Metal,1	111477	"T" Lever #2,9	111566	Block,2
100476	Spring Post,5	111478	"T" Lever #3,9	111567	Post-Hex.,2
100551	Screw (6-40 x 3/4),6	111479	"T" Lever #4,9	111568	Latch Cam,6
100646	Condenser - 1MF.,2	111480	"T" Lever #5,9	111572	Connecting Block (with Cord),6
100858	Screw (4-40 x 1/2),2	111481	Screw (10-32 Shoulder),6	111573	Bracket,5
101877	Guide and Die Plates (Fitted Together),7	111483	Main Casting,5	111575	Tape - Out Contact (Assem.),4
101879	Tape Guide Spring,7	111484	Bearing,6	111578	Gear 30T,6
101886	Prepunch Bracket,7	111485	Punch Lever,5,6	111579	Gear 23T,2
101890	Feed Roll Bracket,7	111486	Latch Lever,6	111582	Spacer,2
101894	Tape Guide,7	111487	Bushing,6	111584	Lid Backstop - Inner,11
101898	Stud,7	111488	Shaft,6	111585	Lid Backstop - Outer,11
101899	Eccentric,7	111489	Lock Bail,5	111586	Flunger,11
101900	Feed Pawl,7	111492	Punch Link,5,6	111587	Detent Spring,11
101901	Stud,7	111493	Retractor Plate,5	111588	Cover Locating Bracket,1
101902	Bail - Lower,7	111496	Main Shaft (With Hub),6	111589	Locating Stud,1
101903	Stud,7	111501	Drive Link,6	111590	Handle,2
101904	Bail - Upper,7	111502	Cam,6	111591	Lamp Cap - Red,11
101905	Bracket,7	111503	Sleeve,6	111592	Lord Mounting - Cup Type,1
101906	Feed Hole Punch,7	111504	Clutch - Driven,6	111593	Base - With Drawers (Black Wrinkle),1
101914	Eccentric,7	111505	Clutch - Driving,6	111594	Pad - End (Felt),11
101970	Stud,8	111506	Cam Sleeve (Assem.),6	111595	Pad Retainer - End,11
101986	Punch Bail,8	111507	Main Shaft Bracket (with 70838 Brackets, 6811 screws and 2191 Lock Washer),6	111596	Pad - Lid (Felt),11
101989	Punch Bail Extension,8	111509	Code Punch Bracket,8	111964	Shims,5
101990	Detent Lever Plate,8	111510	Punch Fingers,8	112612	Pad Retainer - Lid,11
101992	Screw (1/4-32 Pilot),8	111511	Vertical Stop Lever #1,8	112613	Pad - Rear Left (Felt),11
101993	Clamp Plate,8	111512	Vertical Stop Lever #2,8	112614	Pad Retainer - Rear Left,11
101994	Spring Post,8	111513	Vertical Stop Lever #3,8	112615	Pad - Rear Right (Felt),11
101995	Detent Lever (With Roller),8	111514	Vertical Stop Lever #4,8	112616	Pad Retainer - Rear Right,11
101996	Feed Pawl,8	111515	Vertical Stop Lever #5,8	112618	Strip,11
101997	Punch Arm,8	111516	Spacer (.045"),8	112671	Screw (8-40 x 1/8),11
102209	Feed Roll (with Ratchet and Feed Wheel),5	111517	Spacer (.145"),8	112677	Connection Block,3
102210	Code Punches,5	111518	Eccentric Stud,8	112698	Connection Block,3
102239	Stripper Plate,7	111519	Guide,8	113214	Unit Pad - Front,2
102329	Contact Spring,4	111520	Lever,8	113215	Bearing Pad,2
102330	Contact Spring,4	111521	Shaft,8	113216	Motor Pad,10
102774	Bolt (8-36 x 4-3/8),10	111522	Feed Pawl Suppressor,8	113217	Unit Pad - Rear,2
102940	Strap - 3" Long (with Terminals),1	111523	Post,8	113219	Motor Plate,10
102964	Retaining Bracket,8	111524	Separator,8	113229	Toggle Switch Bracket,1
102965	Spacer,8	111525	Spacer,8	113478	Cable Clamp,2
102966	Spring Post,8	111526	Transfer Lever #1,8	113806	Pinion - 8T,2
103431	Grommet - Rubber,10	111527	Transfer Lever #2,8	113807	Gear - 21T,2
103832	Shaft,8	111528	Transfer Lever #3,8	113808	Cable - Line,4
105448	Name Plate (Motor On),1	111529	Transfer Lever #4,8	113809	Cable - Power (Large),4
105449	Name Plate (Motor Off),1	111530	Transfer Lever #5,8	113952	Washer - Felt,6
105635	Toggle Switch (Assem.) Includes 91683 Nut-Hex., and 91684 Nut-Ring,1	111531	Tape Guide,8	113953	Retaining Disc,6
105940	Stiffener,4	111534	Tape Container (Assem.),2,4	113954	Cam Sleeves Disc,6
106245	Resistor - 5000 Ohms,9	111535	Tape Container Panel (Black Semi-Gloss),4	113955	Driving Disc,6
109822	Bearing,11	111536	Mounting Block,4	113956	Selector Mounting Plate (With Posts),9
110330	Screw (2-56 Shoulder),5	111537	Separator,4	113958	Clutch Lever,6
110344	Locating Plate,5	111540	Stop,4	114123	Cable (Assem.) Includes 114126 Plug (27 Prong) and 82474 Terminals,4
110366	Punch Retractors,8	111541	Mounting Plate,4	114126	Plug (27 Prong),4
110375	Support (with Spacer),5	111542	Block - With Post,4	114316	Spring,6
		111543	Operating Lever,4	114670	Strap - 2-1/2" Long (with Terminals),10
		111544	Tape Tension Spring (with 96509 Roller),4	114671	Locating Stud,1
				114681	Cable - Power (Small),4

106945 - Tape out signal
for print.
8