

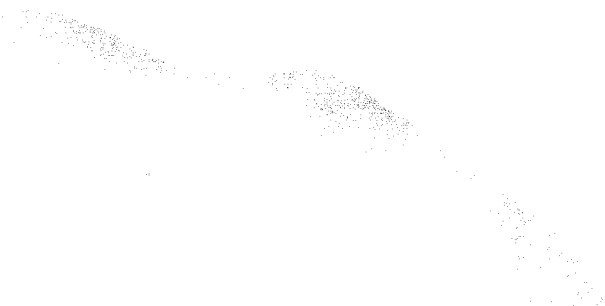
BULLETIN 1129B

PARTS
PAPER WINDER
(PW AND LPW)



TELETYPE[®]
CORPORATION

5555 TOUHY AVENUE, SKOKIE, ILLINOIS



LIST OF EFFECTIVE PAGES

FEBRUARY, 1963

(Supersedes November, 1959)

Page Number	Change In Effect
A to E	Change 5
1-1 to 1-5	Change 5
2-1 to 2-3	Change 5
3-1 to 3-4	Change 5

The above list indicates the effective pages as of issue date. Upon receipt of Change Pages, insert them numerically and discard any superseded pages.

TABLE OF CONTENTS

Figure Number		Page Number
SECTION 1 - Paper Winder (PW)		
1-1	Base Assembly	1-2
1-2	Motor Mounting Bracket Assembly	1-3
1-3	104851 Modification Kit to Provide 100 Ohm Resistance for DC Operated Paper Winders ...	1-4
1-4	129428 Modification Kit to Provide Reverse Rotation of Paper Winder	1-4
	Numerical Index	1-5
SECTION 2 - Paper Winder (LPW)		
2-1	Paper Winder Assembly	2-2
2-2	Copy Display Racks	2-3
	Numerical Index	2-4

SECTION 3 - Modification Kits and Master Numerical Index

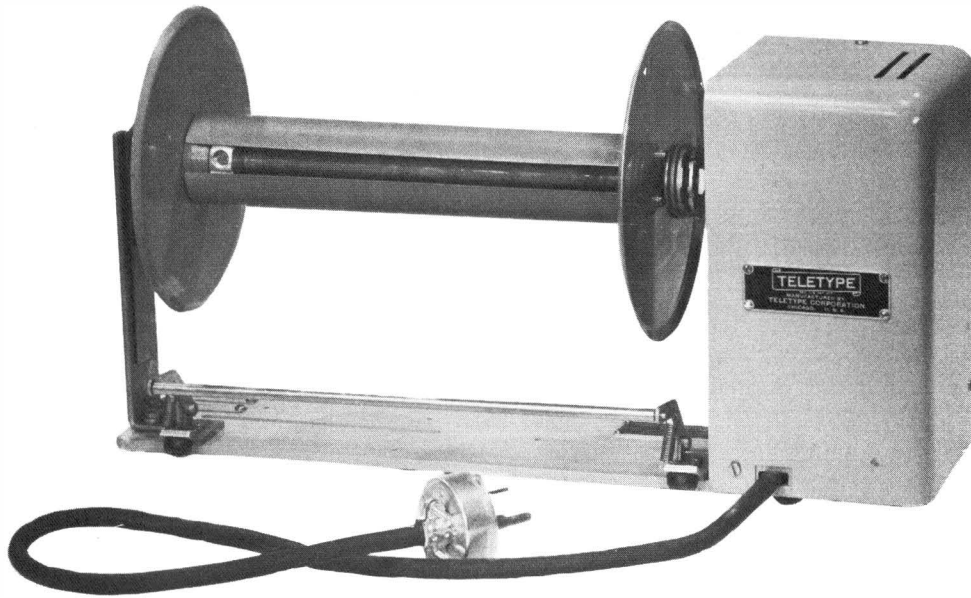
PAINT FINISH COLOR CODE CHART				
(For Parts and Assemblies Requiring a Paint Finish)				
Color	Finish Suffixes			
	Wrinkle	Smooth	Textured Vinyl	Smooth Vinyl
Black	AA (37)	BB		
Dark Brown	AD (38)			
Light Brown	AC (39)			
Gray Green	AB (40)	BK	GA (45)	
Charcoal Gray	AL	BZ		HA
Dark Gray			GB	
Light Gray		EJ		HB
Beige Gray				HE
Light Olive Gray				HF(46)
Fawn				HG
Light Beige		EL		HC
Moss Green		EN		HD
Eye Rest Green		EA		
Turquoise		EV		
Aqua Blue		EK		
Brussels Light Blue		EC		
Medium Blue		ES		
Cherry Red		EF		
Pastel Yellow		EG		
White		EH		
Ivory		EM		
Beige		ET		
Rose Beige		ER		
Rose Pink		EV		

Numbers in parenthesis () indicate Bell System Code.
 Suffix to be applied following the part number.
 Other colors available upon request.

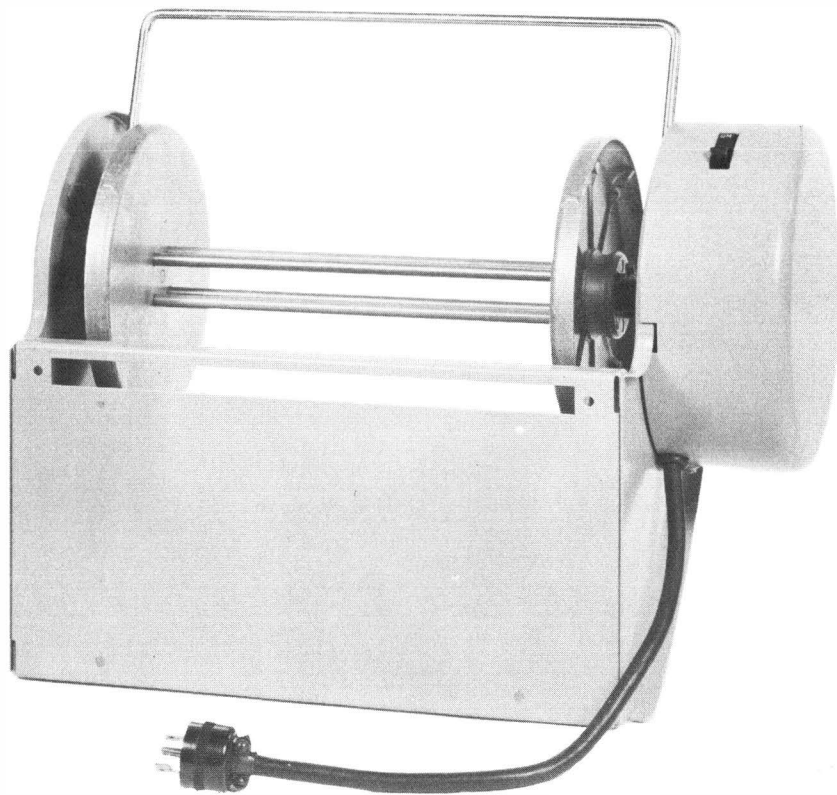
TELETYPE AND BELL SYSTEM CODE REFERENCE CHART FOR UNITS COVERED IN THIS BULLETIN			
Teletype Code (New)	Teletype Code (Old)	Paper Width	Bell System Code
PW200**	PW4 (Walnut)	4-1/2" to 6"	
PW201**	PW2 (Walnut) PW5 (Walnut) PW7 (Black Wrinkle)	6" to 8-1/2"	15A**
PW202**	PW1 (Walnut) PW6 (Walnut) PW10 (Black Wrinkle)	4-1/2" to 5"	15B**
PW203**	PW3 (Walnut)	4-1/2" to 6-1/2"	
PW204**	PW8 (Walnut)	6" to 8-1/2"	15C**
PW205**	PW9 (Walnut)	4-1/2" to 5"	15D**
PW206**		6" to 8-1/2"	15E**
PW207**		8-1/2"	
PW208**		4-1/2" to 5"	15F**
LPW300**		4-1/4" to 8-1/2"	1A**

BELL SYSTEM ONLY

When ordering parts from this bulletin, prefix each number with the letters TP.



PAPER WINDER (PW)



PAPER WINDER (LPW)



SECTION 1

PAPER WINDER (PW)

Description Paper Width Max.	Cylinder	Rod	Base Plate	Shaft Assembly
5"	93655	88886	110996**	93656
6"	93657	89203	101023**	93644
6-1/2"	93646			
8-1/2"	93705			

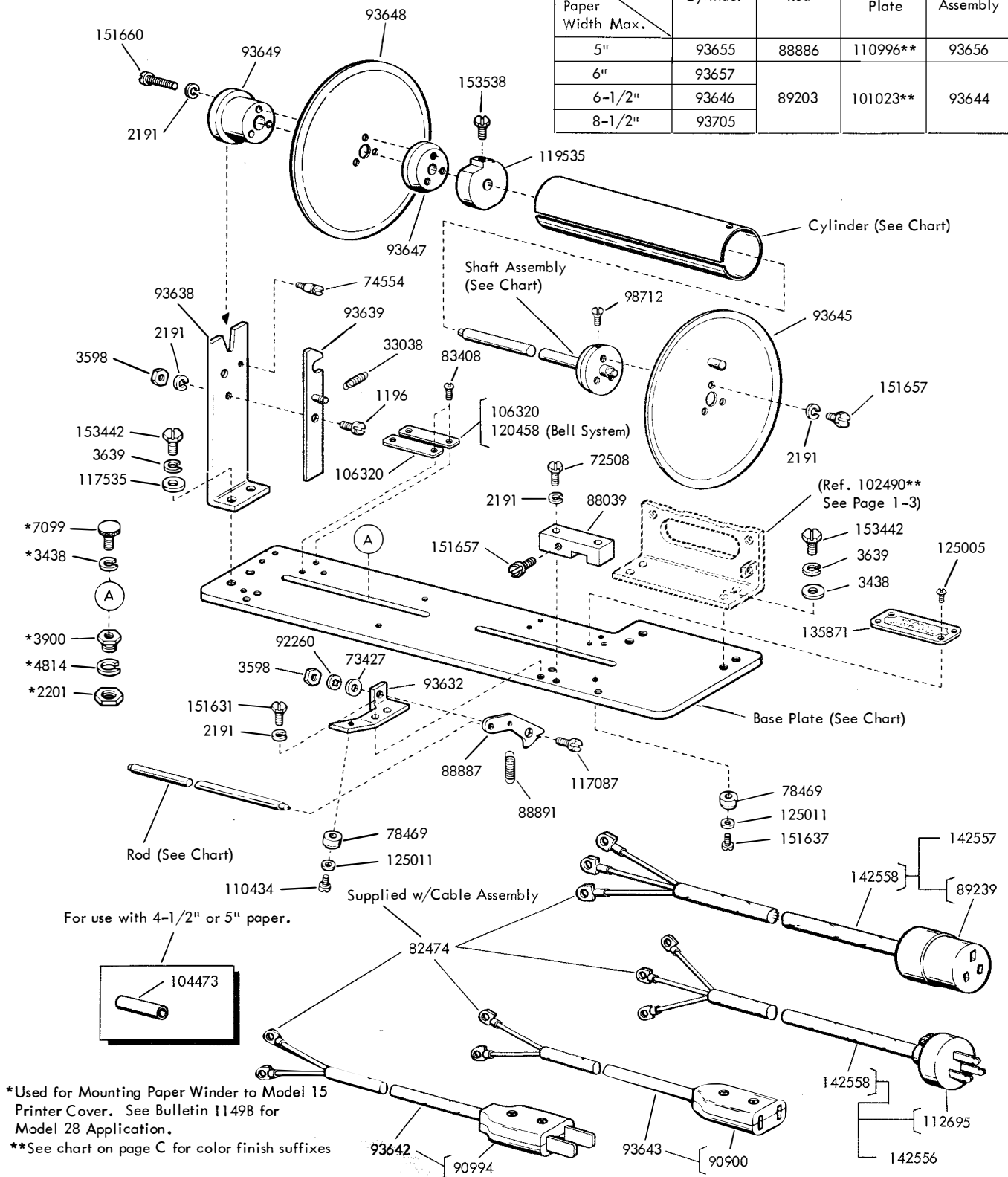
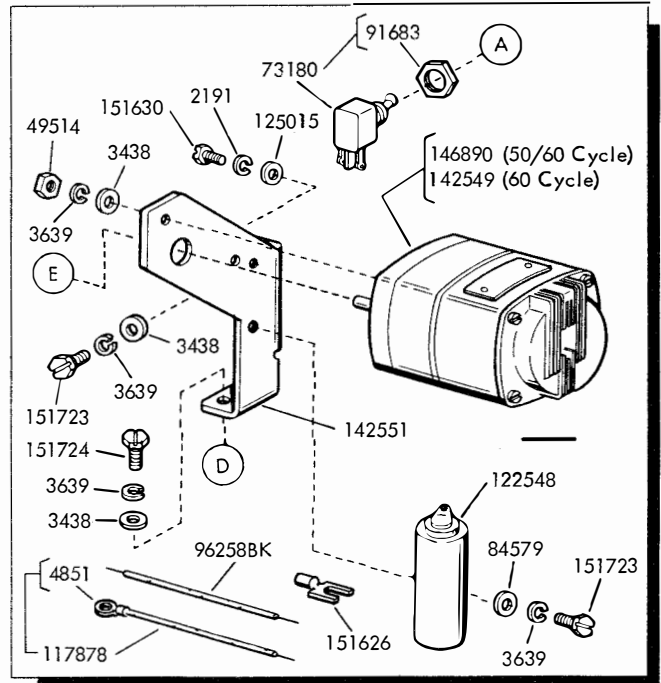
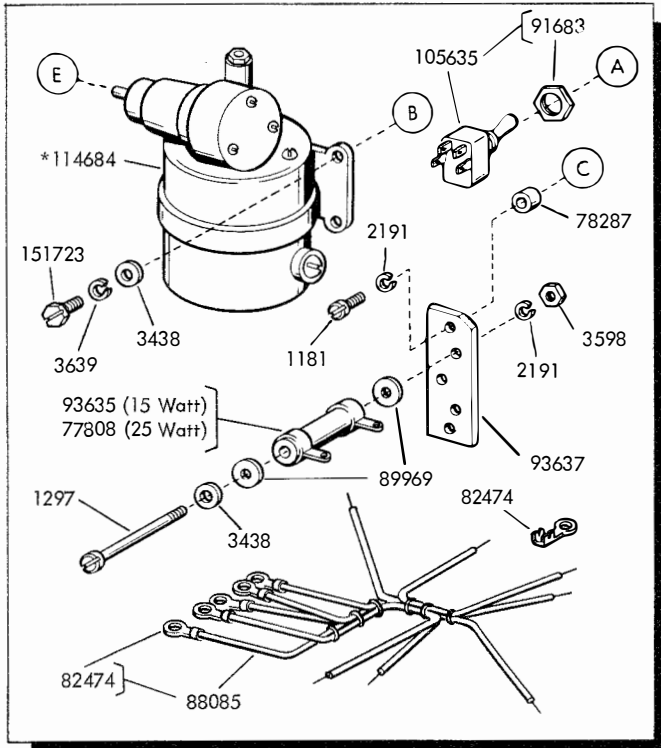
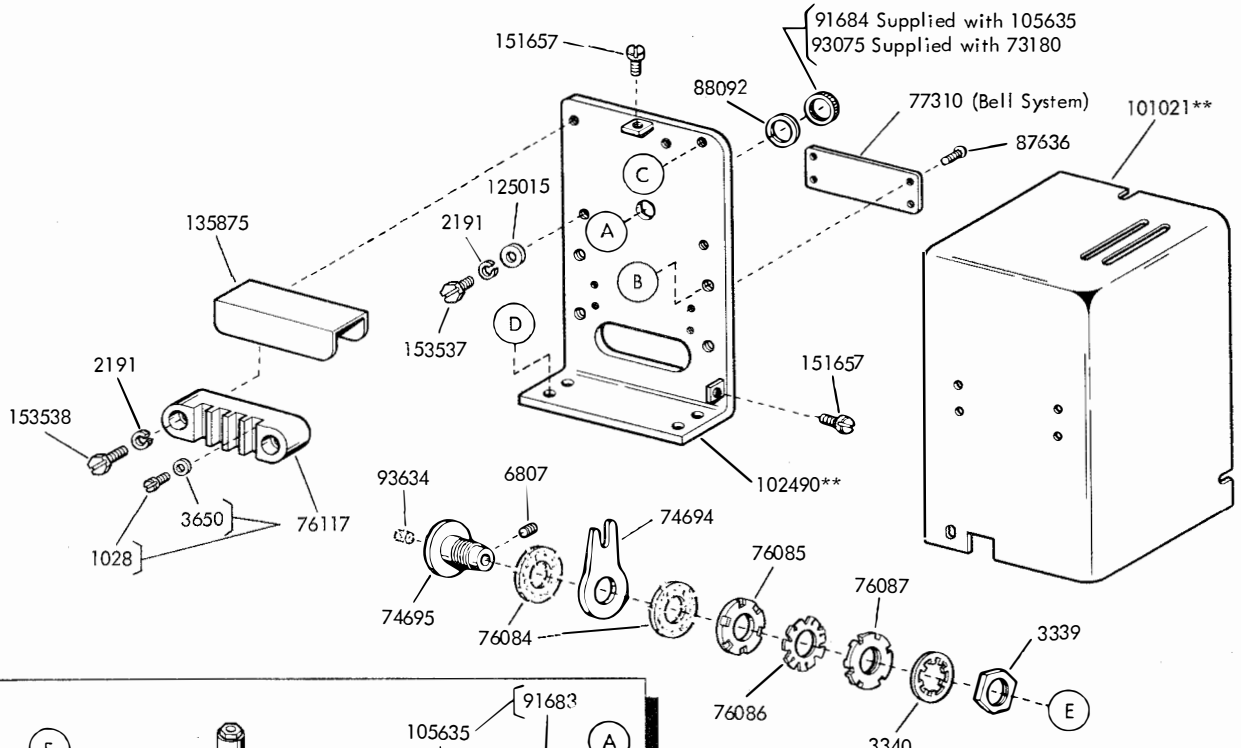


FIGURE 1-1. BASE ASSEMBLY

*Used for Mounting Paper Winder to Model 15 Printer Cover. See Bulletin 1149B for Model 28 Application.
 **See chart on page C for color finish suffixes

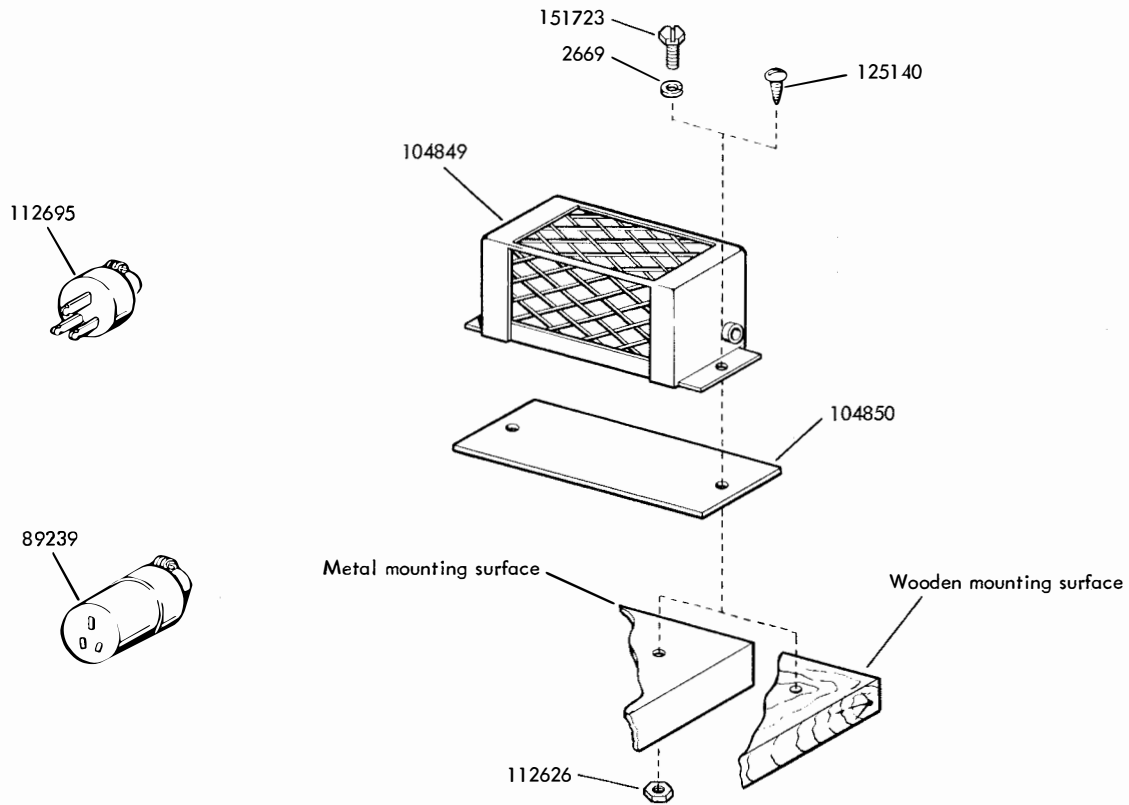


* The following maintenance parts are available for the 114684 Motor:

- 113911 Cap, Brush
- 114685 Brush W/ Spring
- 119477 Gear, Helical
- 129689 Gear, Spiral
- 92115 Screw, Set

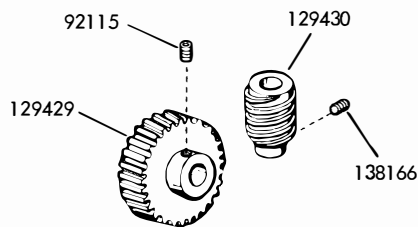
**See chart on page C for color finish suffixes

FIGURE 1-2. MOTOR MOUNTING BRACKET ASSEMBLY



Specification 5148S

FIGURE 1-3. 104851 MODIFICATION KIT TO PROVIDE 100 OHM RESISTANCE FOR 110V DC OR 25 CYCLE AC OPERATED PAPER WINDER



Specification 5148S

FIGURE 1-4. 129428 MODIFICATION KIT TO PROVIDE REVERSE ROTATION OF PAPER WINDER

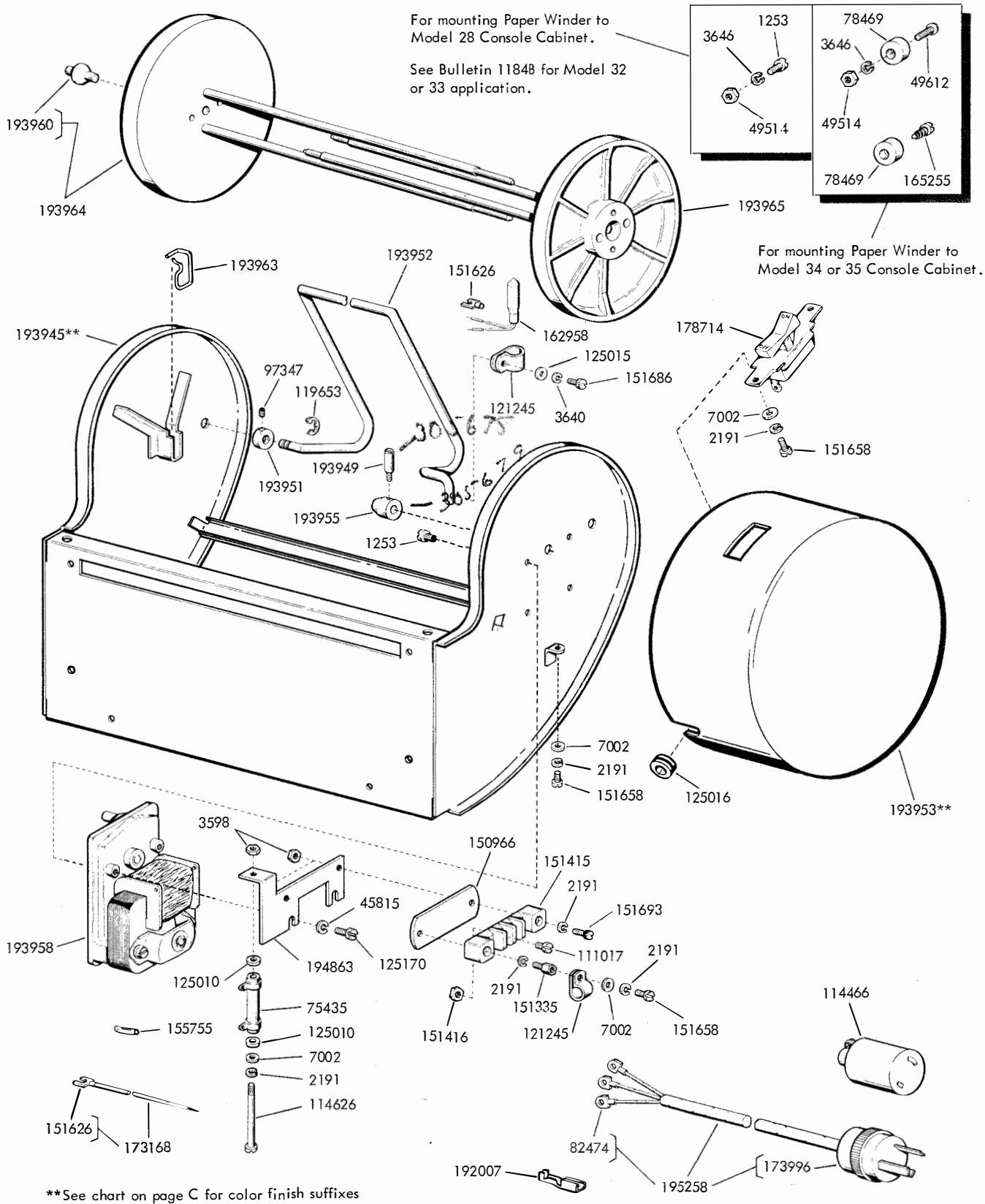
NUMERICAL INDEX - SECTION 1

Part Number	Description and Page Number	Part Number	Description and Page Number	Part Number	Description and Page Number
1028	Screw (4-40 x 1/4 Fil) 1-3	88891	Spring 1-2	114684	Motor, Series: 115V, DC/60 Cycle, AC 1-3
1181	Screw (6-40 x 11/16 Fil) 1-3	89203	Rod, Paper Slack 1-2	114685	Brush w/Spring 1-3
1196	Screw, Shoulder (6-40) 1-2	89239	Connector, Receptacle (3 Pt) 1-2, 1-4	117087	Screw, Shoulder (6-40) 1-2
1297	Screw (6-40 x 2-7/16 Fil) 1-3	89969	Washer, Insulating 1-3	117535	Washer, Flat 1-2
2191	Washer, Lock 1-2, 1-3	90900	Connector, Receptacle (2 Pt) 1-2	117878	Strap w/Terminal (3" Black) 1-3
2201	Nut (5/16-32 Hex) 1-2	90994	Connector, Plug (2 Pt) 1-2	119477	Gear, Helical (60 T) 1-3
2669	Washer, Lock 1-4	91683	Nut (15/32-32 Hex) 1-3	119535	Bushing 1-2
3339	Nut (9/16-32 Hex) 1-3	91684	Nut (15/32-32 Ring) 1-3	120458	Plate, Identification (Bell) 1-2
3340	Washer, Lock 1-3	92115	Screw, Set (8-32 x 3/16) 1-3, 1-4	122548	Capacitor (.95-1.05 mf) 1-3
3438	Washer, Flat 1-2	92260	Washer, Lock 1-2	125005	Screw (2-56 x 3/16 Rd) 1-2
3598	Nut (6-40 Hex) 1-2, 1-3	93075	Nut, Shoulder (15/32-32 Ring) 1-3	125011	Washer, Flat 1-2
3639	Washer, Lock 1-2, 1-3	93632	Bracket, Slack Rod 1-2	125015	Washer, Flat 1-3
3650	Washer, Flat 1-3	93634	Wick, Felt 1-3	125140	Screw, Wood (#8) 1-4
3900	Bushing 1-2	93635	Resistor (250 Ohm) 1-3	129428	Modification Kit 1-4
4814	Washer, Lock 1-2	93637	Plate, Resistor Mounting 1-3	129429	Gear, Helical (60T) 1-4
4851	Terminal 1-3	93638	Bracket 1-2	129430	Gear, Spiral (1T) 1-4
6807	Screw, Set (6-40 x 3/16) 1-3	93639	Latch 1-2	129689	Gear, Spiral (1T) 1-3
7099	Screw, Thumb (10-32) 1-2	93642	Cable Assembly 1-2	135871	Plate, Instruction 1-2
33038	Spring 1-2	93643	Cable Assembly 1-2	135875	Cover, Terminal Block 1-3
49514	Nut (8-32 Hex) 1-3	93644	Shaft Assembly 1-2	138166	Screw, Set (8-32 x 1/8) 1-4
72508	Screw (6-40 x 3/4 Hex) 1-2	93645	Spindle, Left 1-2	142549	Motor, Synchronous: 115V, 60 Cycle, AC 1-3
73180	Switch, Toggle (Single Pole) 1-3	93646	Cylinder 1-2	142551	Bracket 1-3
73427	Washer, Flat 1-2	93647	Hub, Right 1-2	142555	Cable Assembly 1-2
74554	Post 1-2	93648	Spindle, Right 1-2	142557	Cable Assembly 1-2
74694	Arm, Friction 1-3	93649	Knob 1-2	142558	Cable Assembly 1-2
74695	Sleeve, Friction 1-3	93655	Cylinder 1-2	146890	Motor, Induction: 115V, 50/60 Cycle, AC 1-3
76084	Washer, Felt 1-3	93656	Shaft Assembly 1-2	151626	Terminal 1-3
76085	Disk, Friction 1-3	93657	Cylinder 1-2	151630	Screw (6-40 x 1/4 Hex) 1-3
76086	Washer, Spring 1-3	93705	Cylinder 1-2	151631	Screw (6-40 x 5/16 Hex) 1-2
76087	Nut, Friction (9/16-32) 1-3	96258BK	Wire (3" Black) 1-3	151637	Screw (4-40 x 1/4 Fil) 1-2
76117	Block Assembly, Terminal 1-3	98712	Screw (4-40 x 1/4 Flat) 1-2	151657	Screw (6-40 x 1/4 Fil) 1-2, 1-3
77310	Plate, Identification (Bell) 1-3	101021**	Cover 1-3	151660	Screw (6-40 x 7/8 Rd) 1-2
77808	Resistor (250 Ohm) 1-3	101023**	Plate, Base 1-2	151723	Screw (10-32 x 3/8 Hex) 1-3, 1-4
78287	Spacer 1-3	102490**	Bracket 1-3	151724	Screw (10-32 x 5/8 Hex) 1-3
78469	Foot, Rubber 1-2	104473	Bushing 1-2	153442	Screw (10-32 x 1/2 Hex) 1-2
82474	Terminal 1-2, 1-3	104849	Resistor w/Cage (100 Ohm) 1-4	153537	Screw (6-40 x 1/4 Fil) 1-3
83408	Screw (4-40 x 3/16 Rd) 1-2	104850	Insulator 1-4	153538	Screw (6-40 x 7/16 Hex) 1-2, 1-3
84579	Washer, Flat 1-3	104851	Modification Kit 1-4		
87636	Screw (2-56 x 3/16 Rd) 1-3	105635	Switch, Toggle 1-3		
88039	Clamp 1-2	106320	Plate (Code or Serial) 1-2		
88085	Cable Assembly 1-3	110434	Screw (4-40 x 3/16 Fil) 1-2		
88092	Washer, Flat 1-3	110996**	Plate, Base 1-2		
88886	Rod, Paper Slack 1-2	112626	Nut (10-32 Hex) 1-4		
88887	Lever, Slack Rod 1-2	112695	Connector, Plug (3 Pt) 1-2, 1-4		
		113911	Cap, Brush 1-3		



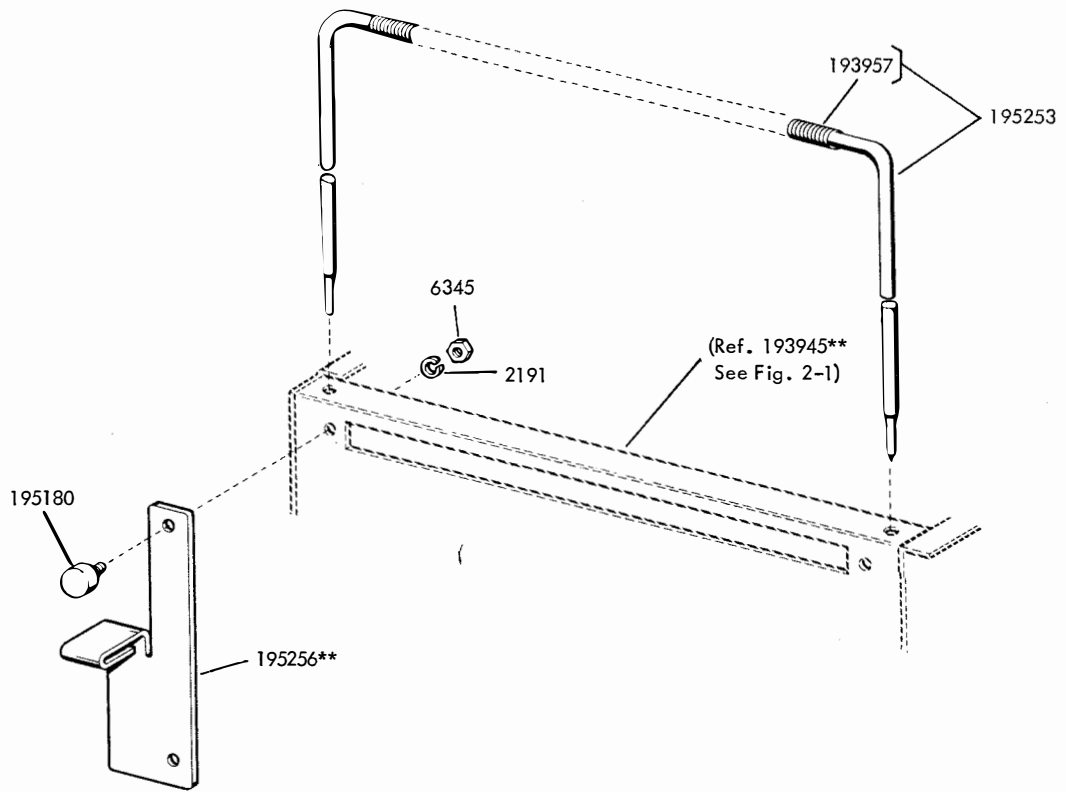
SECTION 2

PAPER WINDER (LPW)



**See chart on page C for color finish suffixes

FIGURE 2-1. PAPER WINDER ASSEMBLY



195259** Modification Kit to provide copy display for Models 32 and 33 Page Printers

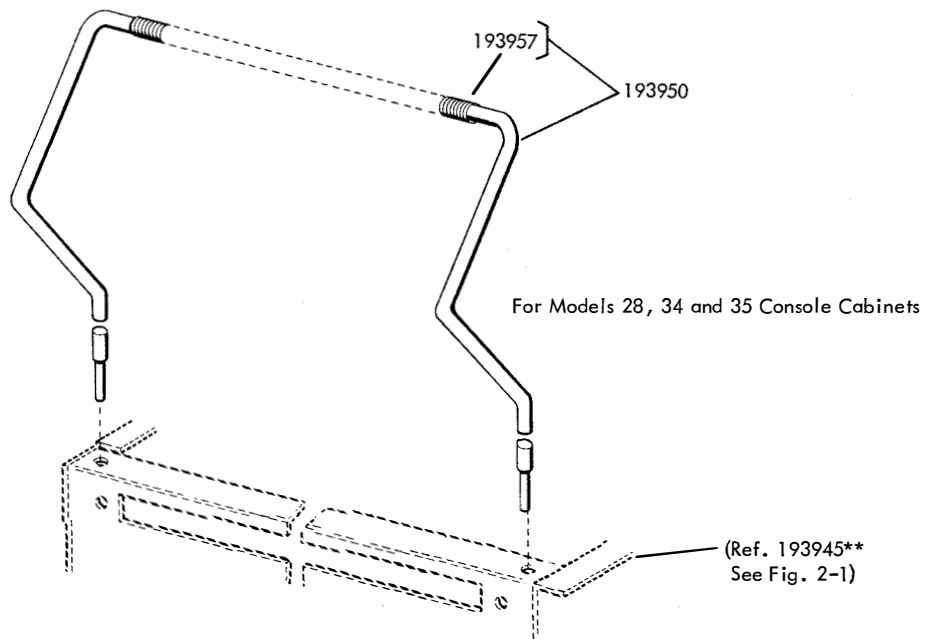


FIGURE 2-2. COPY DISPLAY RACKS

NUMERICAL INDEX - SECTION 2

Part Number	Description and Page Number	Part Number	Description and Page Number	Part Number	Description and Page Number
1253	Screw (8-32 x 5/16 Fil) 2-2	125010	Washer, Insulating 2-2	178714	Switch (On-Off) 2-2
2191	Washer, Lock 2-2, 2-3	125015	Washer, Flat 2-2	192007	Terminal, Female 2-2
3598	Nut (6-40 Hex) 2-2	125016	Grommet 2-2	193945**	Bracket 2-2
3640	Washer, Lock 2-2	125170	Screw (8-32 x 5/16 Fil) 2-2	193949	Post (4-40) 2-2
3646	Washer, Lock 2-2	150966	Insulator 2-2	193950	Rack Assembly, Display 2-3
6345	Nut (6-32 Hex) 2-3	151335	Post 2-2	193951	Guide, Paper 2-2
7002	Washer, Flat 2-2	151415	Block, Terminal 2-2	193952	Bail, Paper Slack 2-2
45815	Washer, Lock 2-2	151416	Nut (6-40 Hex) 2-2	193953**	Housing, Motor 2-2
49514	Nut (8-32 Hex) 2-2	151626	Terminal 2-2	193955	Bearing 2-2
49612	Screw (8-32 x 9/16 Rd) 2-2	151658	Screw (6-40 x 5/16 Fil) 2-2	193957	Spring 2-3
75435	Resistor (600 Ohm) 2-2	151686	Screw (4-40 x 3/8 Fil) 2-2	193958	Motor: 115V, 50/60 Cycle, AC 2-2
78469	Foot, Rubber 2-2	151693	Screw (6-40 x 9/16 Fil) 2-2	193960	Pilot 2-2
82474	Terminal 2-2	155755	Sleeve, Insulating (1/8 x 1/2) 2-2	193963	Clip, Spring 2-2
97347	Screw, Set (4-40 x 1/8) 2-2	155718	Strap (3" Black) 2-2	193964	Flange, Right 2-2
111017	Screw (6-40 x 5/16 Fil) 2-2	162958	Switch, Mercury 2-2	193965	Flange, Left 2-2
114466	Connector, Receptacle (2 Pt) 2-2	165255	Screw, Sheet Metal (#8) 2-2	194863	Bracket 2-2
114626	Screw (6-40 x 2-1/16 Fil) 2-2	173168	Strap (4-1/2" Black) 2-2	195180	Bumper 2-3
119653	Ring, Retaining 2-2	173996	Connector, Plug (3 Pt) 2-2	195253	Rack Assembly, Display 2-3
121245	Clamp, Cable (5/16"ID) 2-2			195256**	Hanger 2-3
				195258	Cable Assembly 2-2
				195259**	Modification Kit 2-3

SECTION 3

AND MASTER NUMERICAL INDEX
ADDITIONAL MODIFICATION KITS

MODIFICATION KITS

Kit Number	Part Number	Description	Quantity	Page
136146		Modification Kit to convert a paper winder unit (PW) from a universal motor to a synchronous motor:		
	2191	Washer, Lock	1	1-3
	3639	Washer, Lock	1	1-3
	49514	Nut (8-32 Hex)	2	1-3
	73180	Switch, Toggle	1	1-3
	84579	Washer, Flat	1	1-3
	96258BK	Strap	1	1-3
	117878	Strap	1	1-3
	122548	Capacitor (.95 to 1.05 MF)	1	1-3
	125015	Washer, Flat	1	1-3
	142549	Motor, 115V AC, 60 Cycle Synchronous	1	1-3
	142551	Bracket, Motor	1	1-3
	142556	Cord, Power	1	1-2
	142557	Cord, Power	1	1-2
	*146358	Plate, Identification (Stamped 15E)	1	
	*146359	Plate, Identification (Stamped 15F)	1	
	151626	Terminal	2	1-3
	151630	Screw (6-40 x 1/4 Hex)	1	1-3
	151724	Screw (10-32 x 5/8 Hex)	2	1-3

Specification 5148S

*For Bell System Only. The 146358 Identification Plate is used when converting a 15A** or 15C** to a 15E**. The 146359 Plate is used when converting a 15B** or 15D** to a 15F**.

MASTER NUMERICAL INDEX

Part Number	Page	Part Number	Page	Part Number	Page	Part Number	Page
1028	1-3	84579	1-3, 3-2	105635	1-3	151416	2-2
1181	1-3	87636	1-3	106320	1-2	151626	1-3, 2-2, 3-2
1196	1-2	88039	1-2	110434	1-2	151630	1-3, 3-2
1253	2-2	88085	1-3	110996**	1-2	151631	1-2
1297	1-3	88092	1-3	111017	2-2	151637	1-2
2191	1-2, 1-3, 2-2, 2-3, 3-2	88886	1-2	112626	1-4	151657	1-2, 1-3
2201	1-2	88887	1-2	112695	1-2, 1-4	151658	2-2
2669	1-4	88891	1-2	113911	1-3	151660	1-2
3339	1-3	89203	1-2	114466	2-2	151686	2-2
3340	1-3	89239	1-2, 1-4	114626	2-2	151693	2-2
3438	1-2	89969	1-3	114684	1-3	151723	1-3, 1-4
3598	1-2, 1-3, 2-2	90900	1-2	114685	1-3	151724	1-3, 3-2
3639	1-2, 1-3, 3-2	90994	1-2	117087	1-2	153442	1-2
3640	2-2	91683	1-3	117535	1-2	153537	1-3
3646	2-2	91684	1-3	117878	1-3, 3-2	153538	1-2, 1-3
3650	1-3	92115	1-3, 1-4	119477	1-3	155755	2-2
3900	1-2	92260	1-2	119535	1-2	155718	2-2
4814	1-2	93075	1-3	119653	2-2	162958	2-2
4851	1-3	93632	1-2	120458	1-2	165255	2-2
6345	2-3	93634	1-3	121245	2-2	173168	2-2
6807	1-3	93635	1-3	122548	1-3, 3-2	173996	2-2
7002	2-2	93637	1-3	125005	1-2	178714	2-2
7099	1-2	93638	1-2	125010	2-2	192007	2-2
33038	1-2	93639	1-2	125011	1-2	193945**	2-2
45815	2-2	93642	1-2	125015	1-3, 2-2, 3-2	193949	2-2
49514	1-3, 2-2, 3-2	93643	1-2	125016	2-2	193950	2-3
49612	2-2	93644	1-2	125140	1-4	193951	2-2
72508	1-2	93645	1-2	125170	2-2	193952	2-2
73180	1-3, 3-2	93646	1-2	129428	1-4	193953**	2-2
73427	1-2	93647	1-2	129429	1-4	193955	2-2
74554	1-2	93648	1-2	129430	1-4	193957	2-3
74694	1-3	93649	1-2	129689	1-3	193958	2-2
74695	1-3	93655	1-2	135871	1-2	193960	2-2
75435	2-2	93656	1-2	135875	1-3	193963	2-2
76084	1-3	93657	1-2	138166	1-4	193964	2-2
76085	1-3	93705	1-2	142549	1-3, 3-2	193965	2-2
76086	1-3	96258BK	1-3, 3-2	142551	1-3, 3-2	194863	2-2
76087	1-3	97347	2-2	142556	1-2, 3-2	195180	2-3
76117	1-3	98712	1-2	142557	1-2, 3-2	195253	2-3
77310	1-3	101021**	1-3	142558	1-2	195256**	2-3
77808	1-3	101023**	1-2	146358	3-2	195258	2-2
78287	1-3	102490**	1-3	146359	3-2	195259**	2-3
78469	1-2, 2-2	104473	1-2	146890	1-3		
82474	1-2, 1-3, 2-2	104849	1-4	150966	2-2		
83408	1-2	104850	1-4	151335	2-2		
		104851	1-4	151415	2-2		

