

# TELETYPE

PRINTING TELEGRAPH SYSTEMS

## PARTS

### TRANSLATOR UNIT, RECEIVING DISTRIBUTOR AND PANEL

(MTU-2A and 2-B)

(MRD-1E and 1F)

(MTUP-2, 4 and 5)



CORPORATION

SUBSIDIARY OF

*Western Electric Company*

CHICAGO, U. S. A.

December 17, 1945

See EE-506, Issue 1, covering motors listed below.  
A copy is filed in Bulletins 1031, Issue 3; 1037, Issue 4  
and 1072, Issue 2, respectively.

<u>Standard Motors</u>		<u>Substitute Motors</u>		<u>Illustrated On Page No.</u>
<u>Part Number</u>	<u>Model Number</u>	<u>Part Number</u>	<u>Model Number</u>	
6708	5BA65AA77	107151	S-9058	2
77953	5BA65AA29	104038	S-9050	3
77953	5BA65AA29	106875	S-9057	4
82283	5SH25AB11	83799	S-9005	5
82714	5SH25AB14	104061	S-9049	6

ALPHABETICAL INDEX

TRANSLATOR

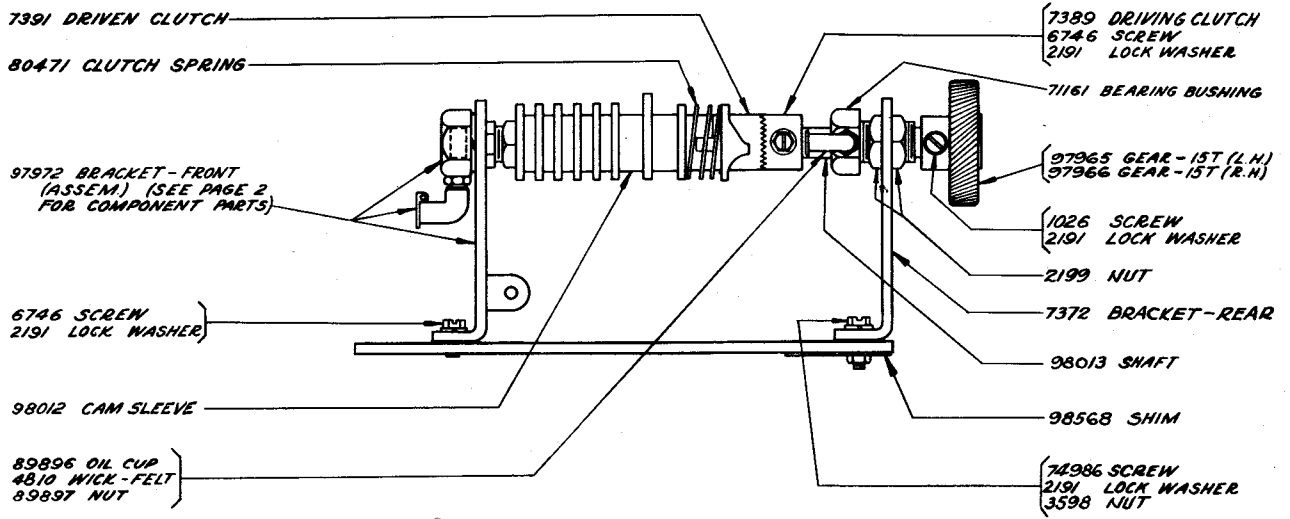
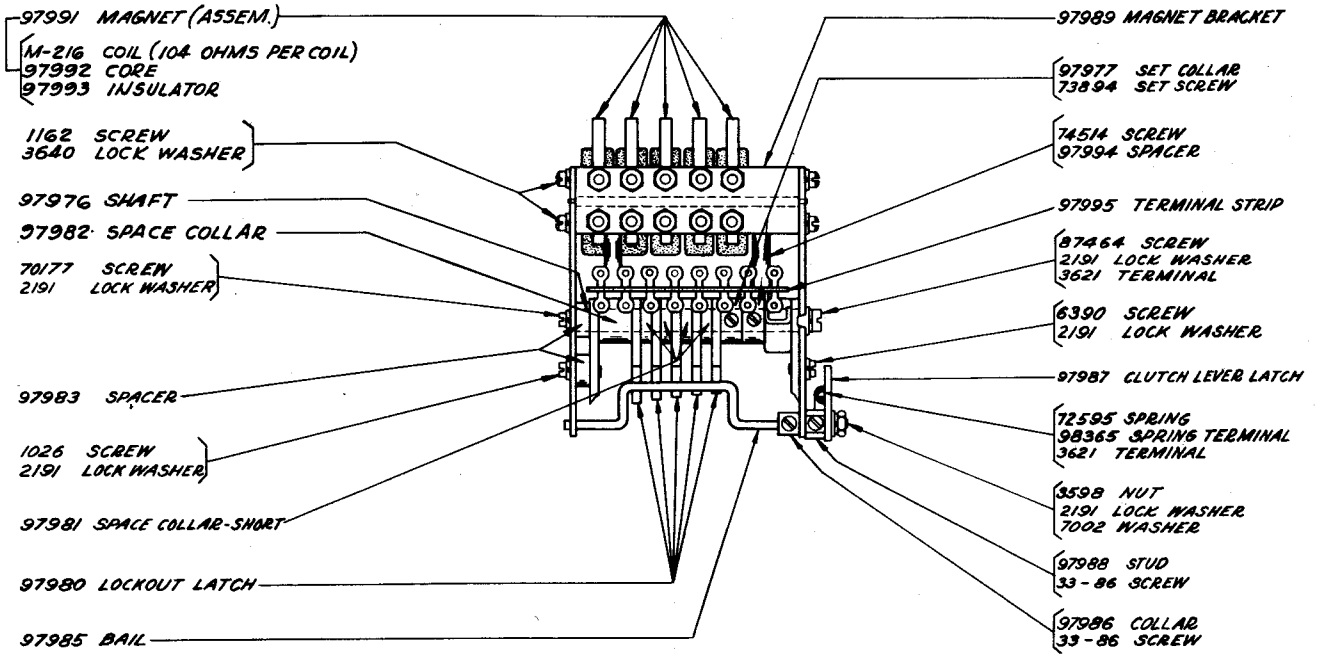
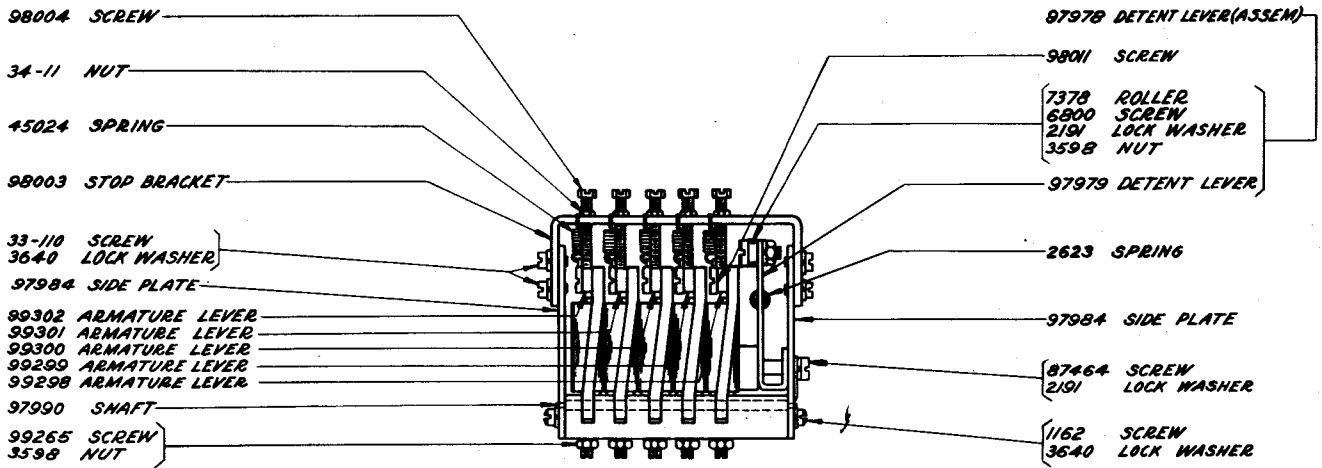
	<u>Page</u>
Armature Levers . . . . .	1
Base Plate . . . . .	3
Cable . . . . .	3
Cam Sleeve . . . . .	1
Clutch Lever . . . . .	2
Contact Levers . . . . .	2
Contact Mounting Assemblies . . . . .	2
Gears . . . . .	1
Magnet Assemblies . . . . .	1,3
Terminal Strip (Assem.) . . . . .	3

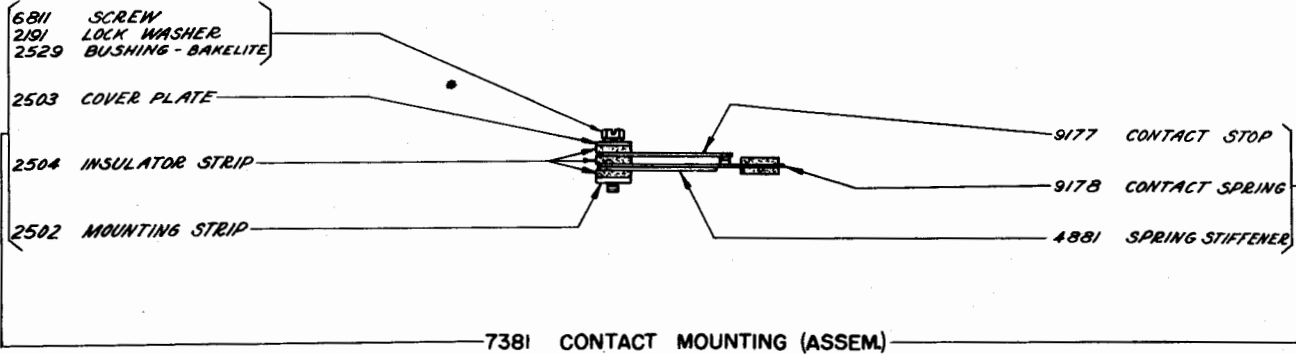
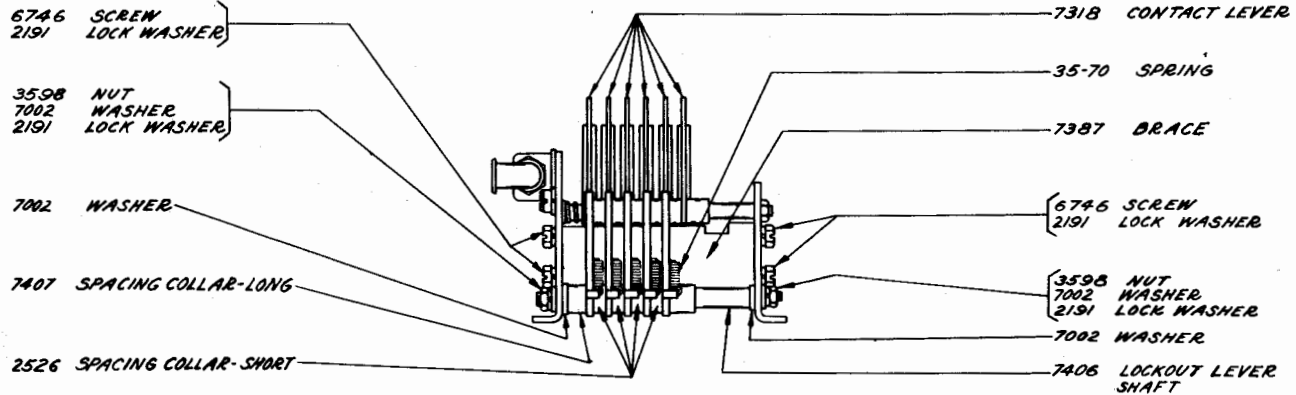
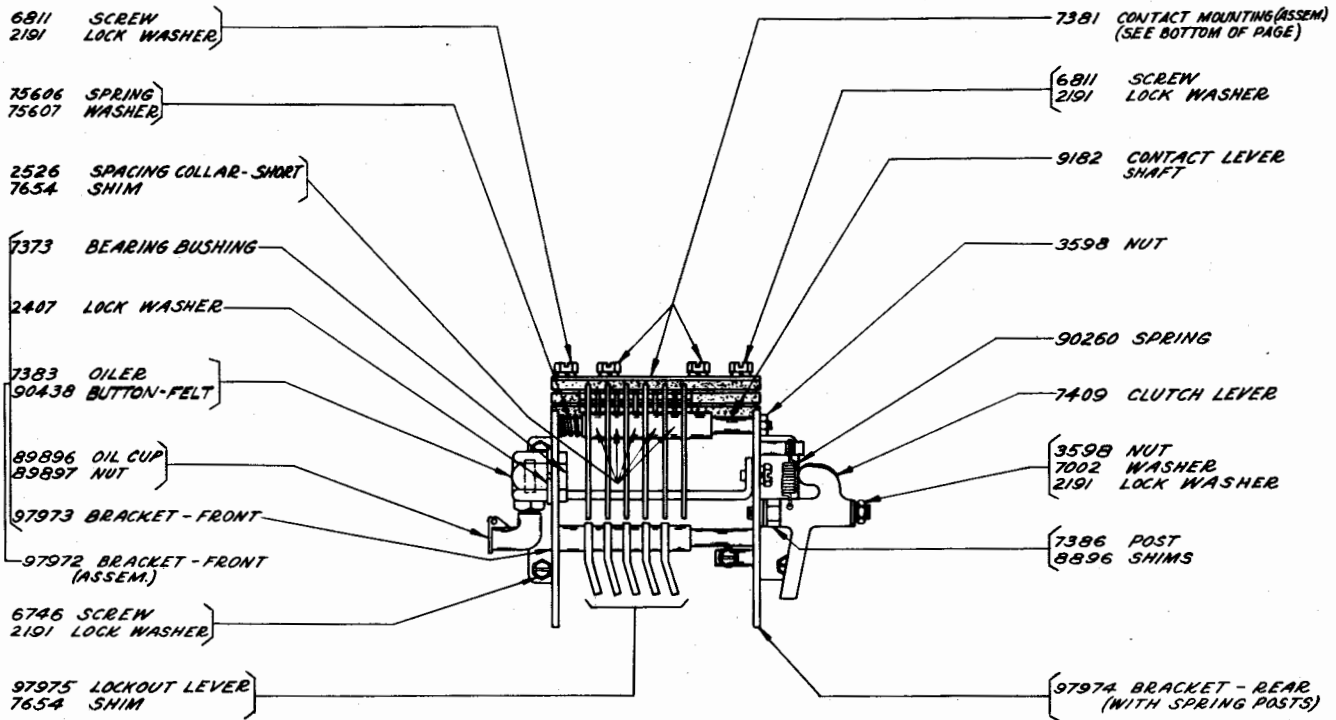
RECEIVING DISTRIBUTOR

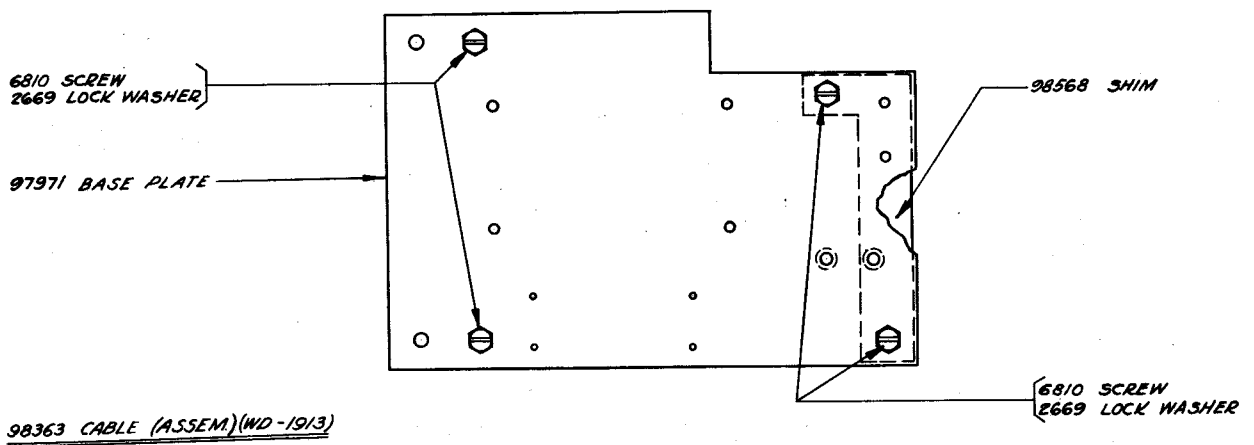
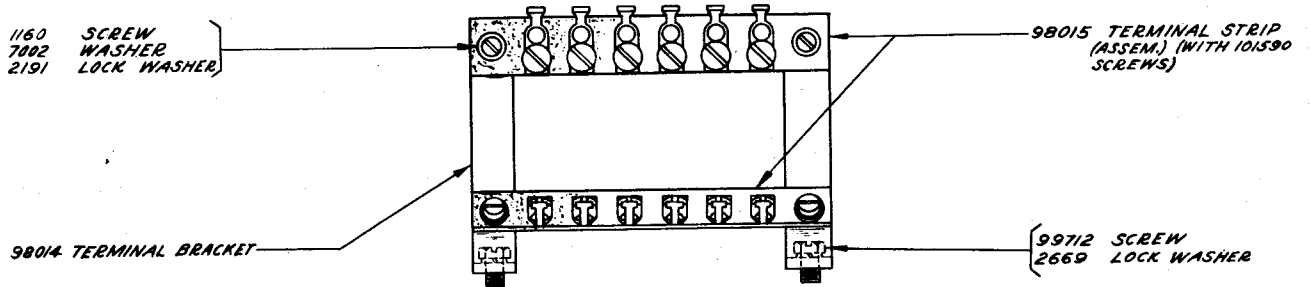
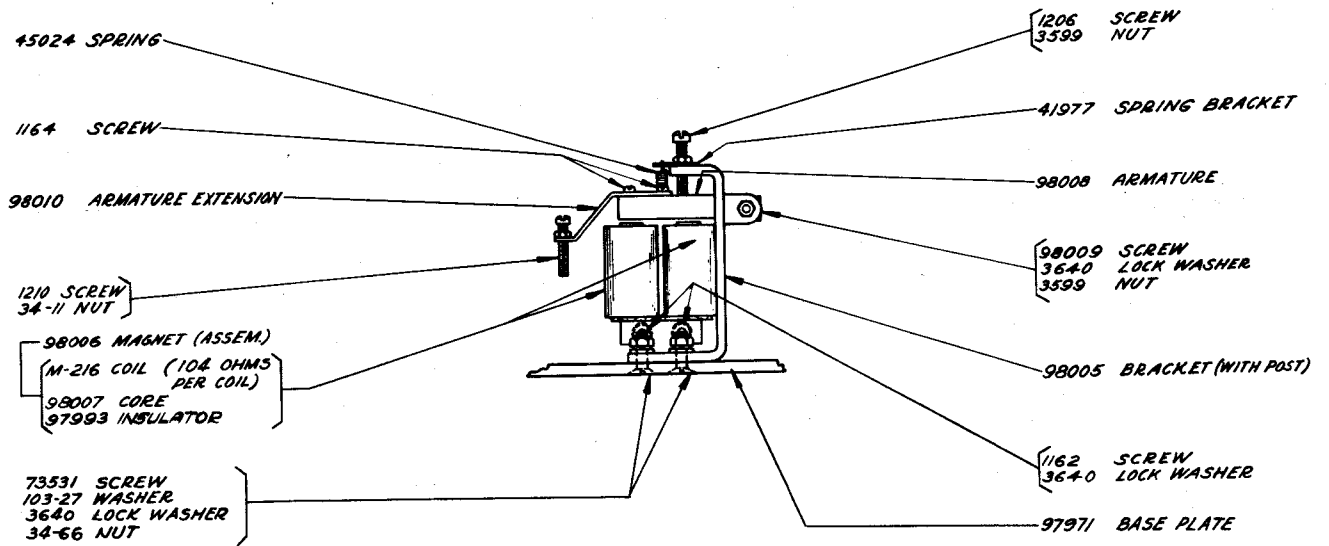
Base Plate . . . . .	5
Cam Cylinder . . . . .	4
Condenser and Resistor Bracket (Assem.) . . . . .	4
Contact Bracket Assemblies . . . . .	4
Contact Levers . . . . .	4
Gears . . . . .	4
Magnet . . . . .	5
Terminal Strip (Assem.) . . . . .	5

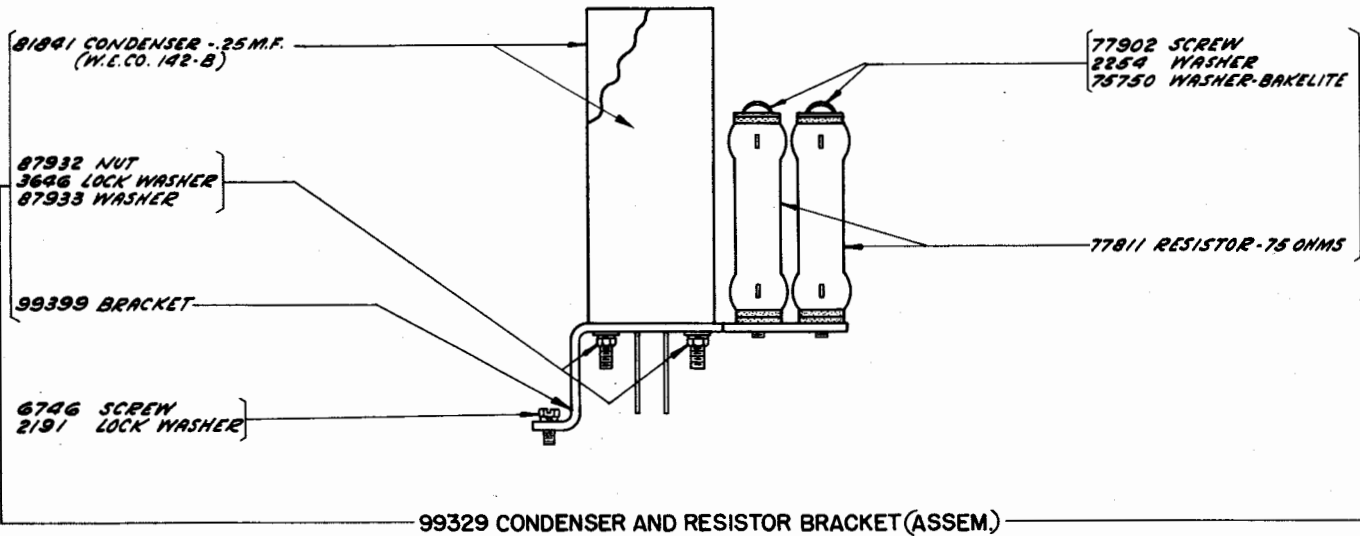
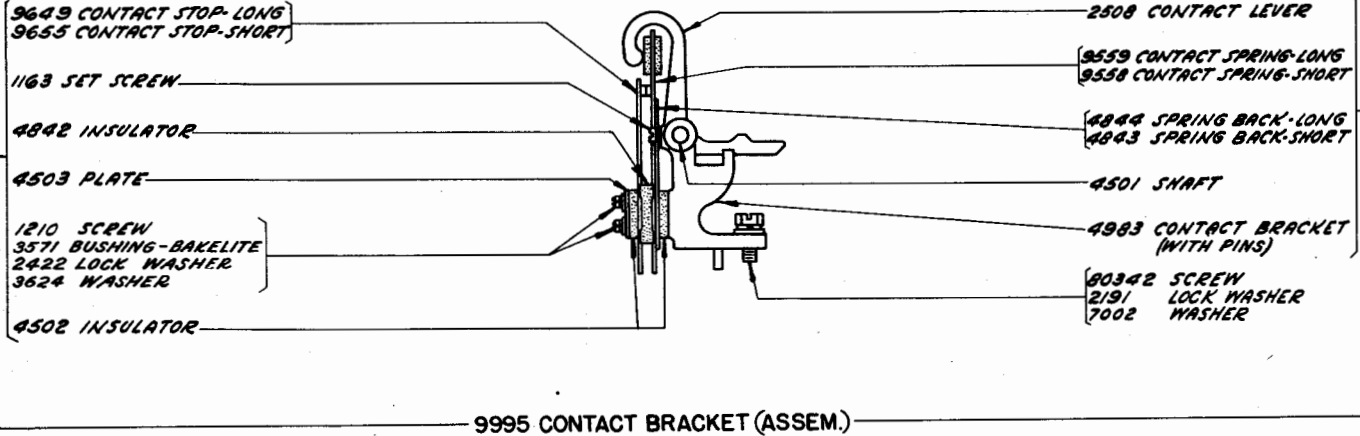
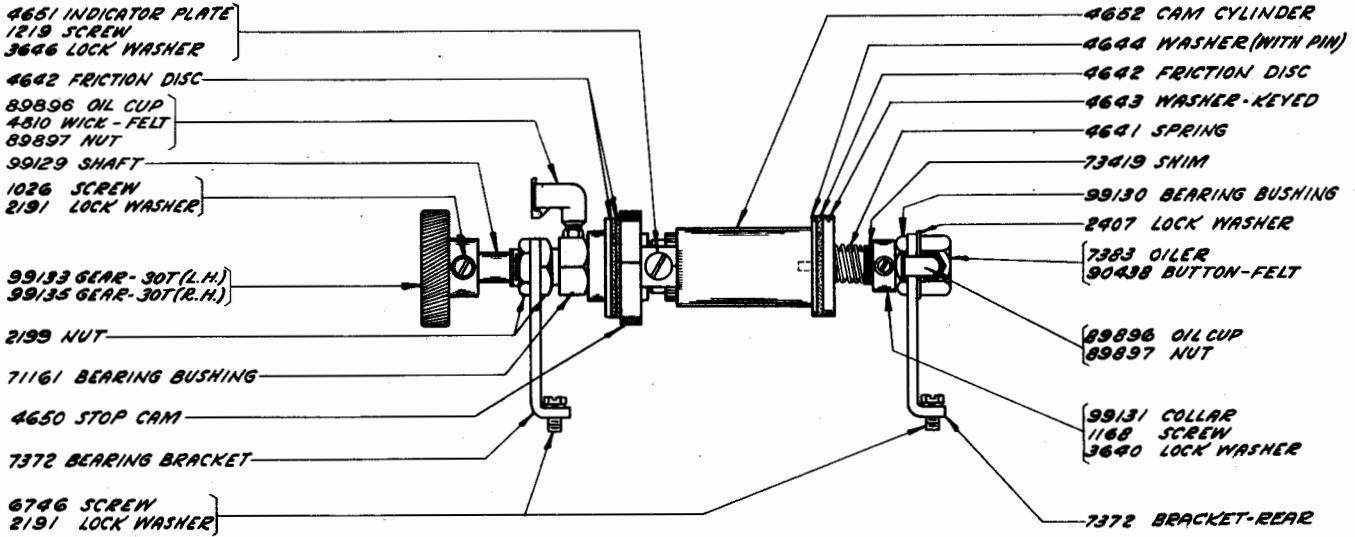
MOUNTING PANEL

Cable . . . . .	10
Condenser and Resistor . . . . .	10
Cover . . . . .	10
Drive Shaft . . . . .	6
Gears . . . . .	6
Governor Parts . . . . .	8
Governor Speed and Adjusting Bracket (Assem.) . . . . .	8
Guards . . . . .	10
Motor - Governed . . . . .	7
Motor - Synchronous . . . . .	9
Mounting Panel . . . . .	6
Pinions - Governed Motor . . . . .	7
Pinions - Synchronous Motor . . . . .	9
Resistor Unit (Assem.) . . . . .	10
Target - 10 Spot . . . . .	7
Terminal Block (Assem.) . . . . .	6

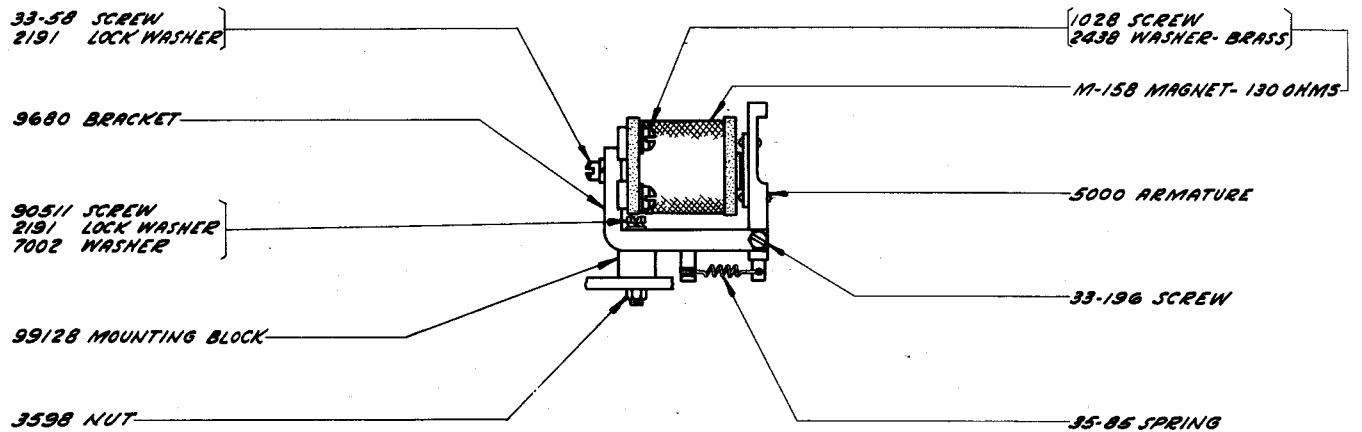
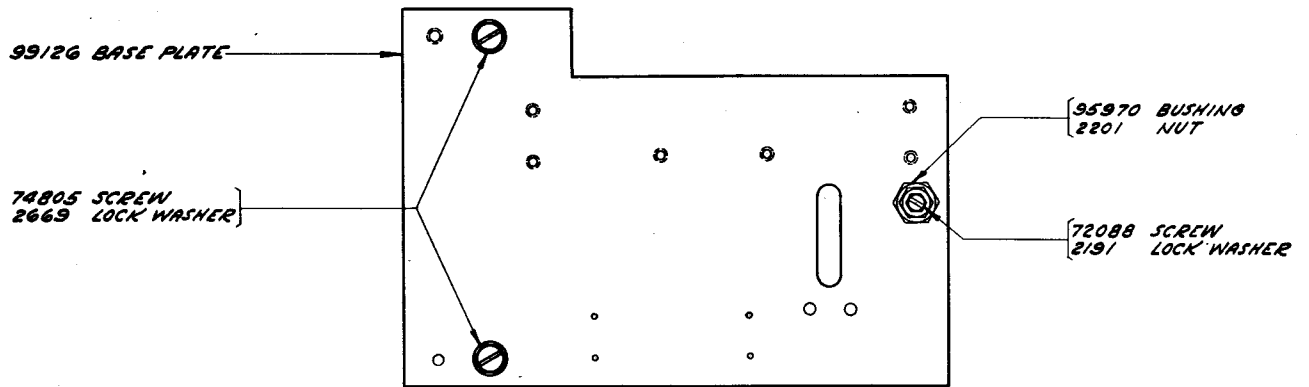
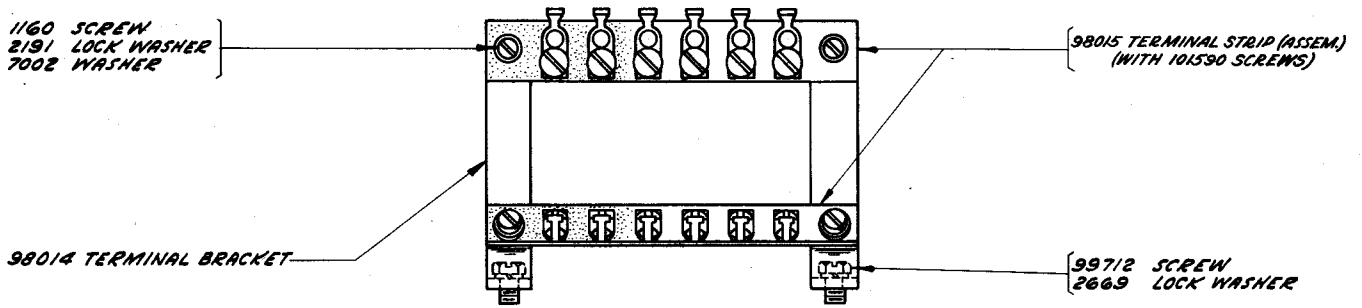




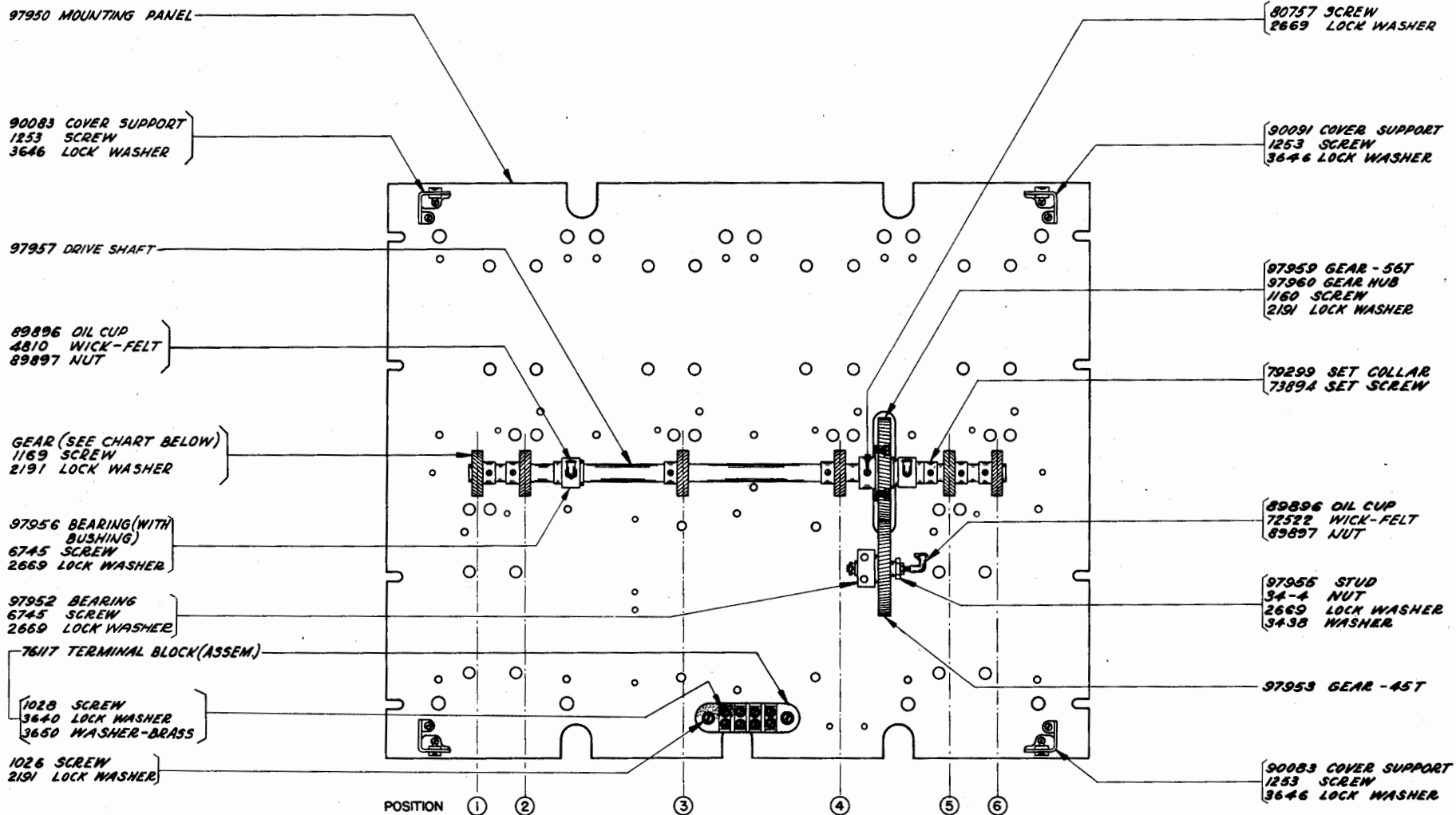




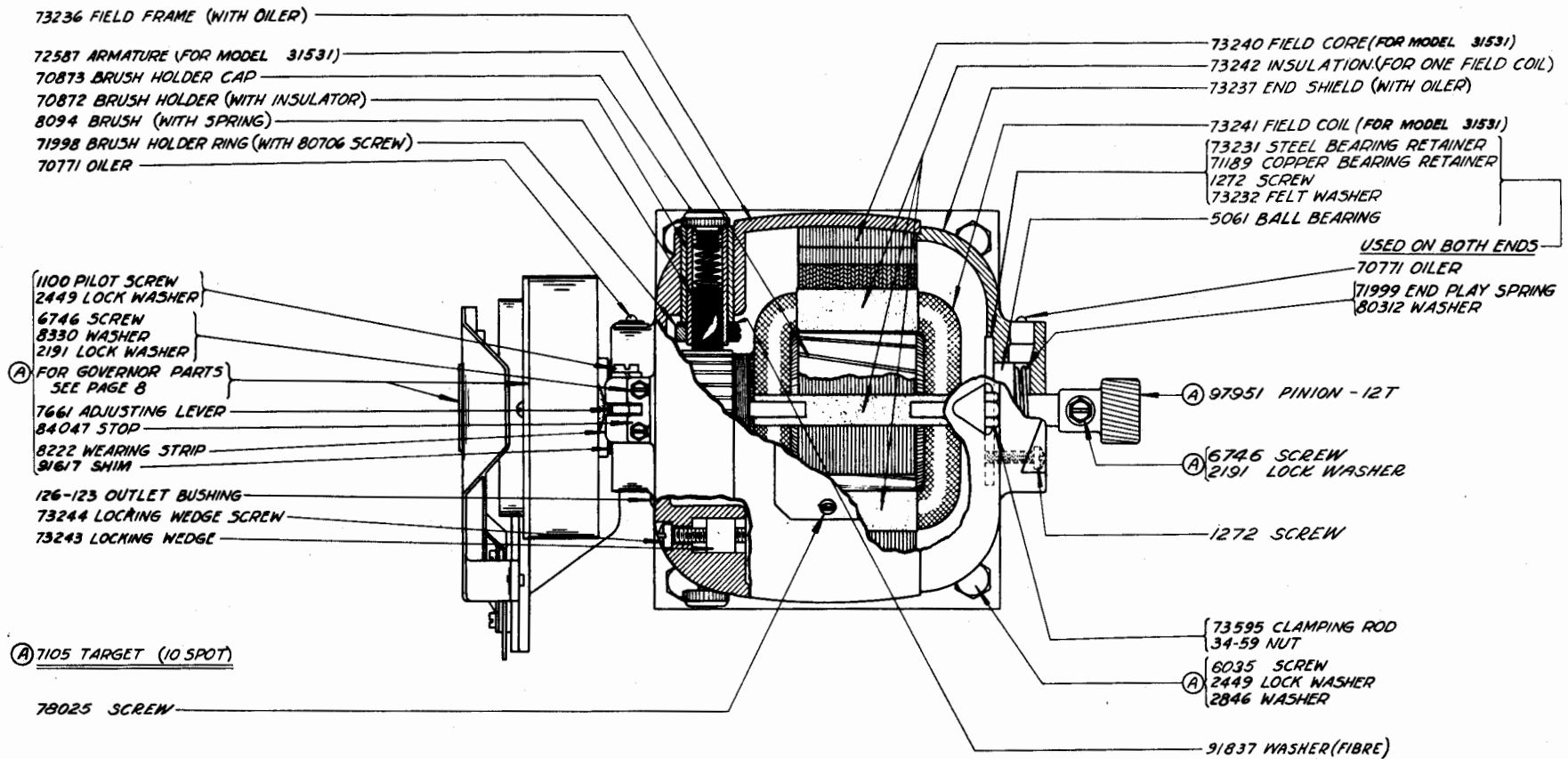
99240 CABLE (W.D.-1952)



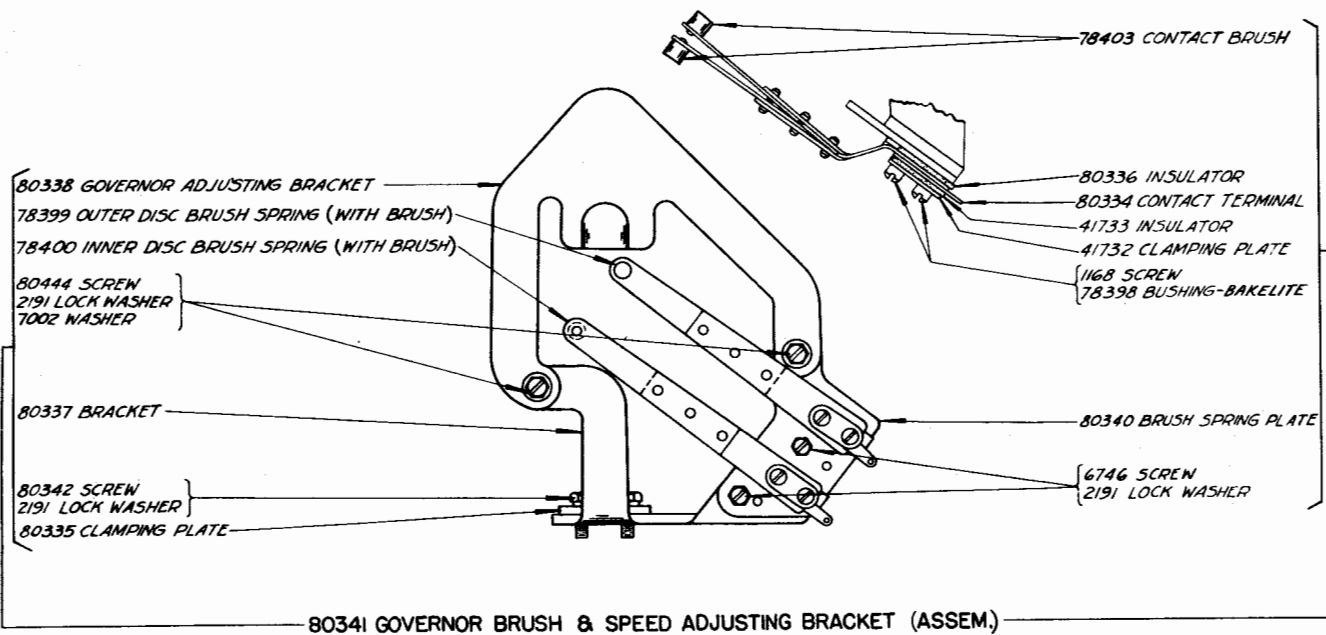
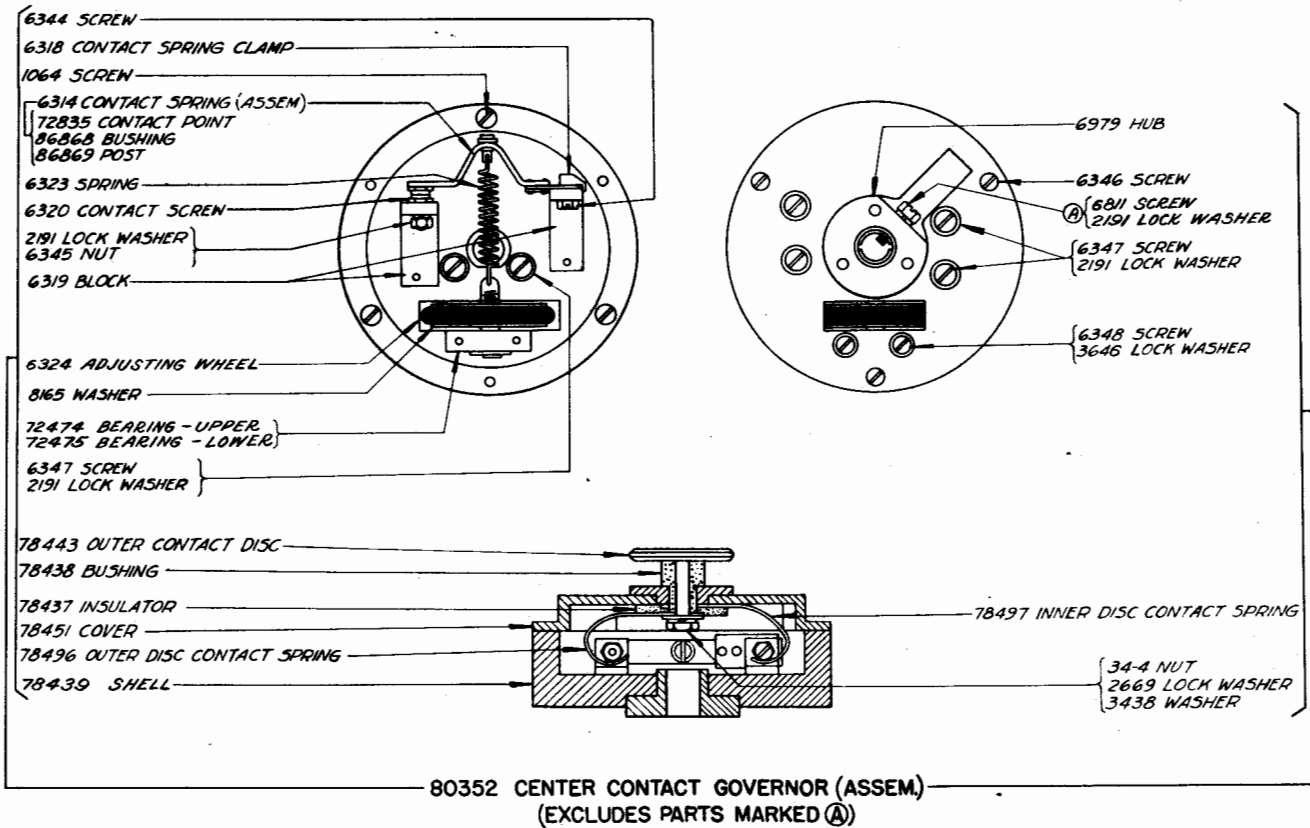


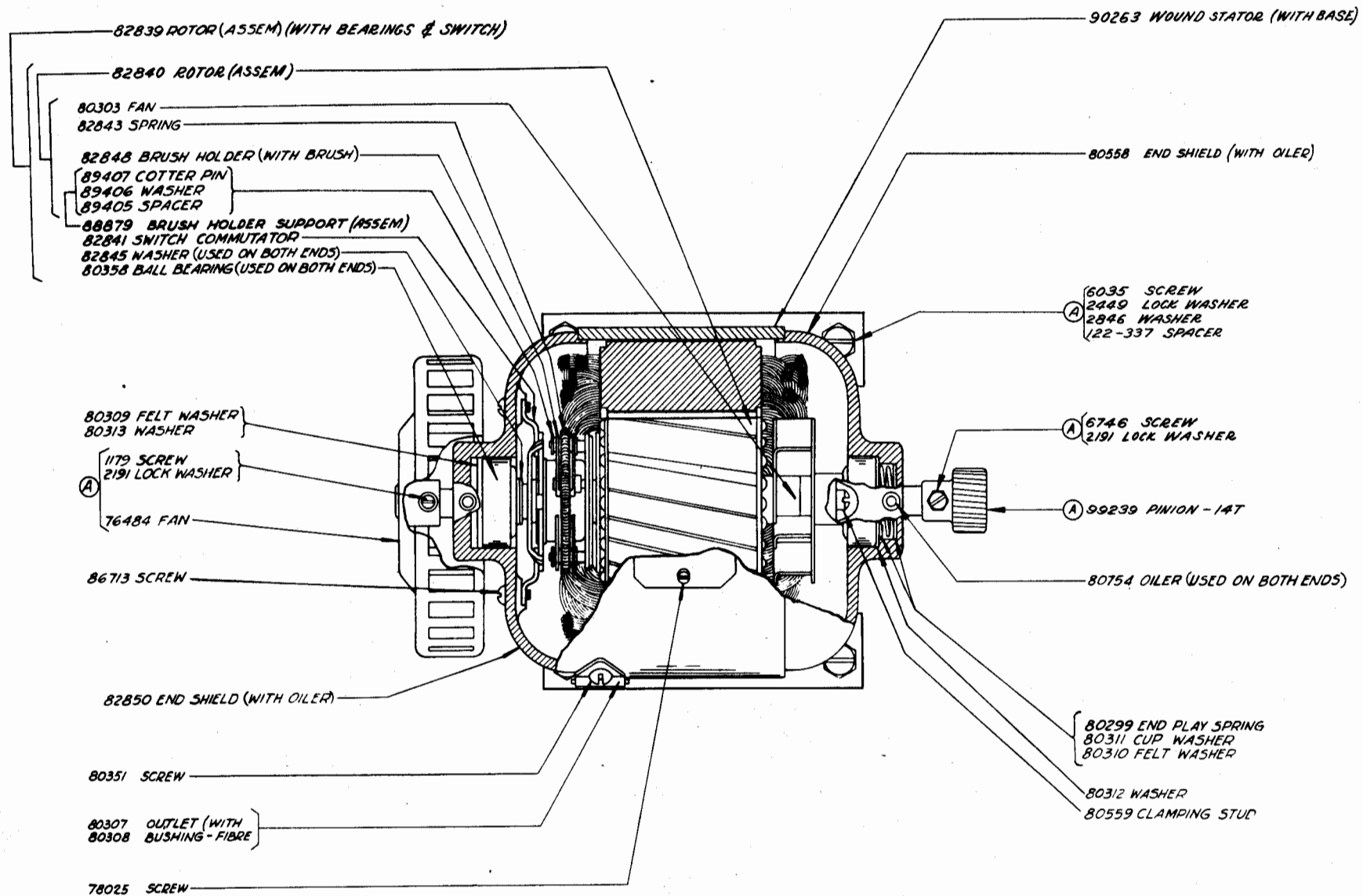


GEAR CHART						
UNIT	POSITION					
	1	2	3	4	5	6
MTUP-2	97964 GEAR 13 T - R.H.	97963 GEAR 13 T - L.H.	97963 GEAR 13 T - L.H.	97963 GEAR 13 T - L.H.	97964 GEAR 13 T - R.H.	97963 GEAR 13 T - L.H.
MTUP-4	99134 GEAR 28 T - R.H.	99132 GEAR 28 T - L.H.	99132 GEAR 28 T - L.H.	97963 GEAR 13 T - L.H.	97964 GEAR 13 T - R.H.	97963 GEAR 13 T - L.H.
MTUP-5	99134 GEAR 28 T - R.H.	99132 GEAR 28 T - L.H.	99132 GEAR 28 T - L.H.	97963 GEAR 13 T - L.H.	97964 GEAR 13 T - R.H.	97963 GEAR 13 T - L.H.

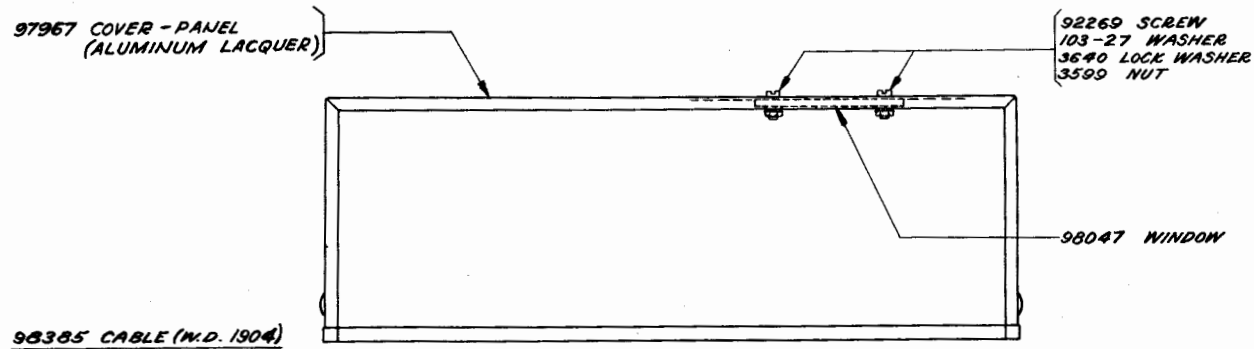
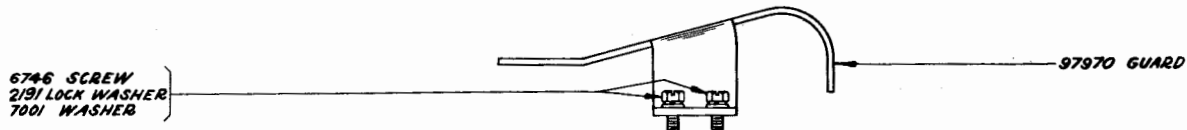
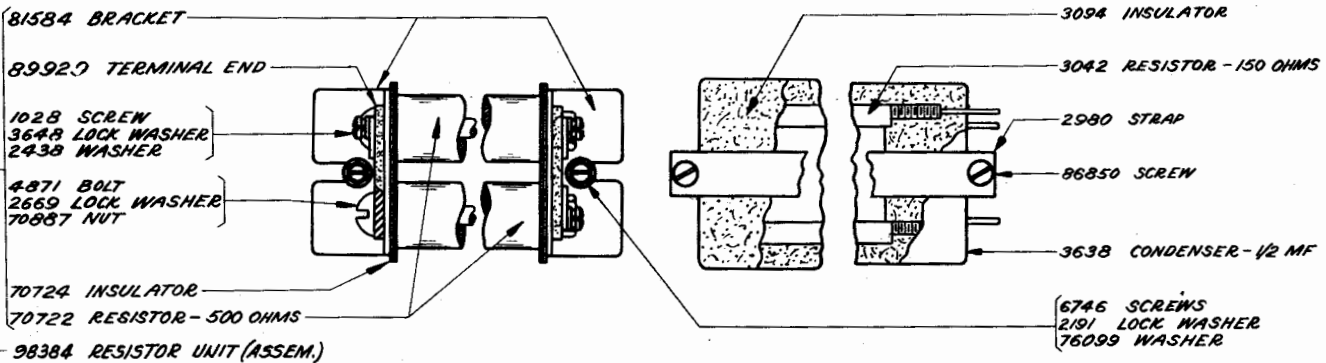
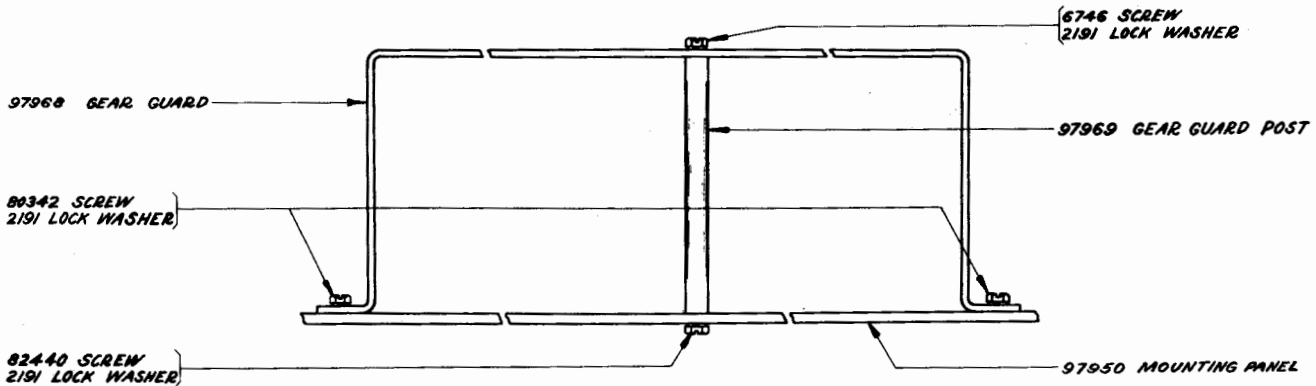


72586 MOTOR, 1/17 H.P., 110 V., D.C. (G.E. MODEL 31531)  
(EXCLUDES PARTS MARKED (A))





82283 SYNCHRONOUS MOTOR, 1/40 H.P., 110 V., 60 CYCLE A.C. (G.E. MODEL 5SH25AB11)  
(EXCLUDES PARTS MARKED (A))



NUMERICAL INDEX

33-58	Screw (6-32 x 7/16), 5	6314	Contact Spring (Assem.), 8	73595	Clamping Rod, 7
33-86	Screw (4-40 x 1/8), 1	6318	Contact Spring Clamp, 8	73894	Screw (6-40 x 1/8 Set), 1, 6
33-110	Screw (4-40 x 3/16), 1	6319	Block, 8	74514	Screw (4-40 x 7/8), 1
33-196	Screw (6-40 Special), 5	6320	Screw (6-32 Contact), 8	74805	Screw (10-32 x 3/4), 5
34-4	Nut (10-32 Hex.), 6, 8	6323	Spring, 8	74986	Screw (6-40 x 13/32), 1
34-11	Nut (2-56 Hex.), 1, 3	6324	Adjusting Wheel, 8	75606	Spring, 2
34-59	Nut (10-32 Hex.), 7	6344	Screw (6-32 x 11/32), 8	75607	Washer, 2
34-66	Nut (4-36 Hex.), 3	6345	Nut (6-32 Hex.), 8	75750	Washer - Bakelite, 4
35-70	Spring, 2	6346	Screw (6-32 x 23/32), 8	76099	Washer, 10
35-85	Spring, 5	6347	Screw (6-32 x 3/8), 8	76117	Terminal Block (Assem.), 6
103-27	Washer, 3, 10	6348	Screw (4-36 x 3/4), 8	76484	Fan, 9
122-337	Spacer, 9	6390	Screw (6-40 x 3/16), 1	77811	Resistor - 75 Ohms, 4
126-123	Outlet Bushing, 7	6745	Screw (10-32 x 1/2), 6	77902	Screw (6-40 x 2-3/8), 4
M-158	Magnet - 130 Ohms, 5	6746	Screw (6-40 x 5/16), 1, 2, 4, 7, 8, 9, 10	78025	Screw (4-48 x 3/16), 7, 9
M-216	Coil (104 Ohms), 1, 3	6800	Screw (6-40 Shoulder), 1	78398	Bushing - Bakelite, 8
1026	Screw (6-40 x 3/8), 1, 4, 6	6810	Screw (10-32 x 3/8), 3	78399	Outer Disc Brush Spring (With Brush), 8
1028	Screw (4-40 x 1/4), 5, 6, 10	6811	Screw (6-40 x 5/8), 2, 8	78400	Inner Disc Brush Spring (With Brush), 8
1100	Screw (1/4-32 Pilot), 7	6979	Hub, 8	78403	Contact Brush, 8
1160	Screw (6-40 x 5/16), 3, 5, 6	7001	Washer, 10	78437	Insulator, 8
1162	Screw (4-40 x 1/4), 1, 3	7002	Washer, 1, 2, 3, 4, 5, 8	78438	Bushing, 8
1163	Screw (4-40 x 5/16), 4	7105	Target, 7	78439	Shell, 8
1164	Screw (2-56 x 3/16), 3, 8	7318	Contact Lever, 2	78443	Outer Contact Disc, 8
1168	Screw (4-40 x 5/16), 4, 8	7372	Bracket - Rear, 1, 4	78451	Cover, 8
1169	Screw (6-40 x 7/16), 6	7373	Bearing Bushing, 2	78496	Outer Disc Contact Spring, 8
1179	Screw (6-40 x 5/8), 9	7378	Roller, 1	78497	Inner Disc Contact Spring, 8
1206	Screw (4-40 x 9/16), 3	7381	Contact Mounting (Assem.), 2	79299	Set Collar, 6
1210	Screw (2-56 x 5/8), 3, 4	7383	Oiler, 2, 4	80299	End Play Spring, 9
1219	Screw (8-32 Set), 4	7386	Post, 2	80303	Fan, 9
1253	Screw (8-32 x 3/8), 6	7387	Brace, 2	80307	Outlet, 9
1272	Screw (6-40 x 11/16), 7	7389	Driving Clutch, 1	80308	Bushing - Fibre, 9
2191	Lock Washer, 1, 2, 3, 4, 5, 6, 7, 8, 9, 10	7391	Driven Clutch, 1	80309	Washer - Felt, 9
2199	Nut (7/16-32 Hex.), 1, 4	7406	Lockout Lever Shaft, 2	80310	Washer - Felt, 9
2201	Nut (5/16-32 Hex.), 5	7407	Spacing Collar - Long, 2	80311	Cup Washer, 9
2254	Washer, 4	7409	Clutch Lever, 2	80312	Washer, 7, 9
2407	Lock Washer, 2, 4	7654	Shim, 2	80313	Washer, 9
2422	Lock Washer, 4	7661	Adjusting Lever, 7	80334	Contact Terminal, 8
2438	Washer - Brass, 5, 10	8094	Brush (With Spring), 7	80335	Clamping Plate, 8
2449	Lock Washer, 7, 9	8165	Washer, 8	80336	Insulator, 8
2502	Mounting Strip, 2	8222	Wearing Strip, 7	80337	Bracket, 8
2503	Cover Plate, 2	8330	Washer, 7	80338	Governor Adjusting Bracket, 8
2504	Insulation Strip, 2	8896	Shims, 2	80340	Brush Spring Plate, 8
2508	Contact Lever, 4	9177	Contact Stop, 2	80341	Governor Brush and Speed Adjusting Bracket (Assem.), 8
2526	Spacing Collar - Short, 2	9178	Contact Spring, 2	80342	Screw (6-40 x 3/8), 4, 8, 10
2529	Bushing - Bakelite, 2	9182	Contact Lever Shaft, 2	80351	Screw (8-36 x 5/16), 9
2623	Spring, 1	9558	Contact Spring - Short, 4	80352	Center Contact Governor (Assem.), 8
2669	Lock Washer, 3, 5, 6, 8, 10	9559	Contact Spring - Long, 4	80358	Ball Bearing, 9
2846	Washer, 7, 9	9649	Contact Stop - Long, 4	80444	Screw (6-40 x 1/4), 8
2980	Strap, 10	9655	Contact Stop - Short, 4	80471	Clutch Spring, 1
3042	Resistor - 150 Ohms, 10	9680	Bracket, 5	80558	End Shield (With Oiler), 9
3094	Insulator, 10	9995	Contact Bracket (Assem.), 4	80559	Clamping Stud, 9
3438	Washer, 6, 8	41732	Clamping Plate, 8	80754	Oiler, 9
3571	Bushing - Bakelite, 4	41733	Insulator, 8	80757	Screw (10-32 x 1/2), 6
3598	Nut (6-40 Hex.), 1, 2, 5	41977	Spring Bracket, 3	81584	Bracket, 10
3599	Nut (4-40 Hex.), 3, 10	45024	Spring, 1, 3	81841	Condenser - .25 M.F., 4
3621	Terminal, 1	70177	Screw (6-40 Pilot), 1	82283	Synchronous Motor, 1/40 H.P., 110 V., 60 Cycle A.C. (G.E. Model 5SH25AB11), 9
3624	Washer, 4	70722	Resistor (500 Ohms), 10	82440	Screw (6-40 x 7/16), 10
3638	Condenser - 1/2 M.F., 10	70724	Insulator, 10	82539	Rotor (Assem.) (With Bearings and Switch), 9
3640	Lock Washer, 1, 3, 4, 6, 10	70771	Oiler, 7	82840	Rotor (Assem.), 9
3646	Lock Washer, 4, 6, 8	70872	Brush Holder (With Insulator), 7	82841	Switch Commutator, 9
3648	Lock Washer, 10	70873	Brush Holder Cap, 7	82843	Spring, 9
3650	Washer - Brass, 6	71161	Nut (3/16-24 Hex.), 10	82845	Washer, 9
4501	Shaft, 4	71189	Bearing Bushing, 1, 4	82848	Brush Holder (With Brush), 9
4502	Insulator, 4	71198	Copper Bearing Retainer, 7	82850	End Shield (With Oiler), 9
4503	Plate, 4	71999	Brush Holder Ring (With 80706 Screw), 7	84047	Stop, 7
4641	Spring, 4	72088	End Play Spring, 7	86713	Screw (4-48 x 5/16), 9
4642	Friction Disc, 4	72474	Screw (6-40 x 1-1/16), 5	86850	Screw (10-32 x 1-1/4), 10
4643	Washer - Keyed, 4	72475	Bearing - Upper, 8	86868	Bushing, 8
4644	Washer (With Pin), 4	72522	Bearing - Lower, 8	86869	Post, 8
4650	Stop Cam, 4	72586	Wick - Felt, 6	87464	Screw (6-40 Pilot), 1
4651	Indicator Plate, 4	72587	Motor, 1/17 H.P., 110 V., D.C. (G.E. Model 31531), 7	87932	Nut (8-32 Hex.), 4
4652	Cam Cylinder, 4	72595	Armature (For Model 31531), 7	87933	Washer, 4
4810	Wick - Felt, 1, 4, 6	72835	Spring, 1	88879	Brush Holder Support (Assem.), 9
4842	Insulator, 4	73231	Contact Point, 8	89405	Spacer, 9
4843	Spring Back - Short, 4	73232	Steel Bearing Retainer, 7		
4844	Spring Back - Long, 4	73236	Washer - Felt, 7		
4871	Bolt, 10	73237	Field Frame (With Oiler), 7		
4881	Spring Stiffener, 2	73240	End Shield (With Oiler), 7		
4983	Contact Bracket (With Pins), 4	73241	Field Core (For Model 31531), 7		
5000	Armature, 5	73242	Field Coil (For Model 31531), 7		
5061	Ball Bearing, 7	73243	Insulation (For One Field Coil), 7		
6035	Screw (1/4-20 x 5/8), 7, 9	73244	Locking Wedge, 7		
		73419	Screw (10-30 x 7/8), 7		
		73531	Shim, 4		
			Screw (4-36 x 3/8), 3		

89406	Washer, 9	97971	Base Plate, 3	98011	Screw (4-40 Shoulder), 1
89407	Cotter Pin, 9	97972	Bracket - Front (Assem.), 1, 2	98012	Cam Sleeve, 1
89896	Oil Cup, 1, 2, 4, 6	97973	Bracket - Front, 2	98013	Shaft, 1
89897	Nut (10-32 Hex.), 1, 2, 4, 6	97974	Bracket - Rear (With Spring Posts), 2	98014	Terminal Bracket, 3, 5
89929	Terminal End, 10	97975	Lockout Lever, 2	98015	Terminal Strip (Assem.) (With 101590 Screws), 3, 5
90083	Cover Support, 6	97976	Shaft, 1	98047	Window, 10
90091	Cover Support, 6	97977	Set Collar, 1	98363	Cable, 3
90260	Spring, 2	97978	Detent Lever (Assem.), 1	98365	Spring Terminal, 1
90263	Wound Stator (With Base), 9	97979	Detent Lever, 1	98384	Resistor Unit (Assem.), 10
90438	Button - Felt, 2, 4	97980	Lockout Latch, 1	98385	Cable, 10
90511	Screw (6-40 x 13/16), 5	97981	Space Collar - Short, 1	98568	Shim, 1, 3
91617	Shim, 7	97982	Space Collar, 1	99126	Base Plate, 5
91837	Washer - Fibre, 7	97983	Spacer, 1	99128	Mounting Block, 5
92269	Screw (4-40 x 3/8), 10	97984	Side Plate, 1	99129	Shaft, 4
95970	Bushing, 5	97985	Bail, 1	99130	Bearing Bushing, 4
97950	Mounting Panel, 6, 10	97986	Collar, 1	99131	Collar, 4
97951	Pinion - 12T, 7	97987	Clutch Lever Latch, 1	99132	Gear - 28T (L.H.), 6
97952	Bearing, 6	97988	Stud, 1	99133	Gear - 30T (L.H.), 4
97953	Gear - 45T, 6	97989	Magnet Bracket, 1	99134	Gear - 28T (R.H.), 6
97955	Stud, 6	97990	Shaft, 1	99135	Gear - 30T (R.H.), 4
97956	Bearing (With Bushing), 6	97991	Magnet (Assem.), 1	99239	Pinion - 14T, 9
97957	Drive Shaft, 6	97992	Core, 1	99240	Cable, 5
97959	Gear - 56T, 6	97993	Insulator, 1, 3	99265	Screw (6-40 Special), 1
97960	Gear Hub, 6	97994	Spacer, 1	99298	Armature Lever, 1
97963	Gear - 13T (L.H.), 6	97995	Terminal Strip, 1	99299	Armature Lever, 1
97964	Gear - 13T (R.H.), 6	98003	Stop Bracket, 1	99300	Armature Lever, 1
97965	Gear - 15T (L.H.), 1	98004	Screw (2-56 x 11/16), 1	99301	Armature Lever, 1
97966	Gear - 15T (R.H.), 1	98005	Bracket (With Post), 3	99302	Armature Lever, 1
97967	Cover - Panel, 10	98006	Magnet (Assem.), 3	99329	Condenser and Resistor Bracket (Assem.), 4
97968	Gear Guard, 10	98007	Core, 3	99399	Bracket, 4
97969	Gear Guard Post, 10	98008	Armature, 3	99712	Screw (10-32 x 5/16), 3, 5
97970	Guard, 10	98009	Screw (4-40 Shoulder), 3		
		98010	Armature Extension, 3		