

MAY 1 1963

BULLETIN No. 1100
ISSUE 2
JULY, 1944

TELETYPE

PRINTING TELEGRAPH SYSTEMS

PARTS

TYPING PERFORATOR

(FPR5H193 & FPR26GS235)



REG. U. S. PAT. OFF.

CORPORATION

SUBSIDIARY OF

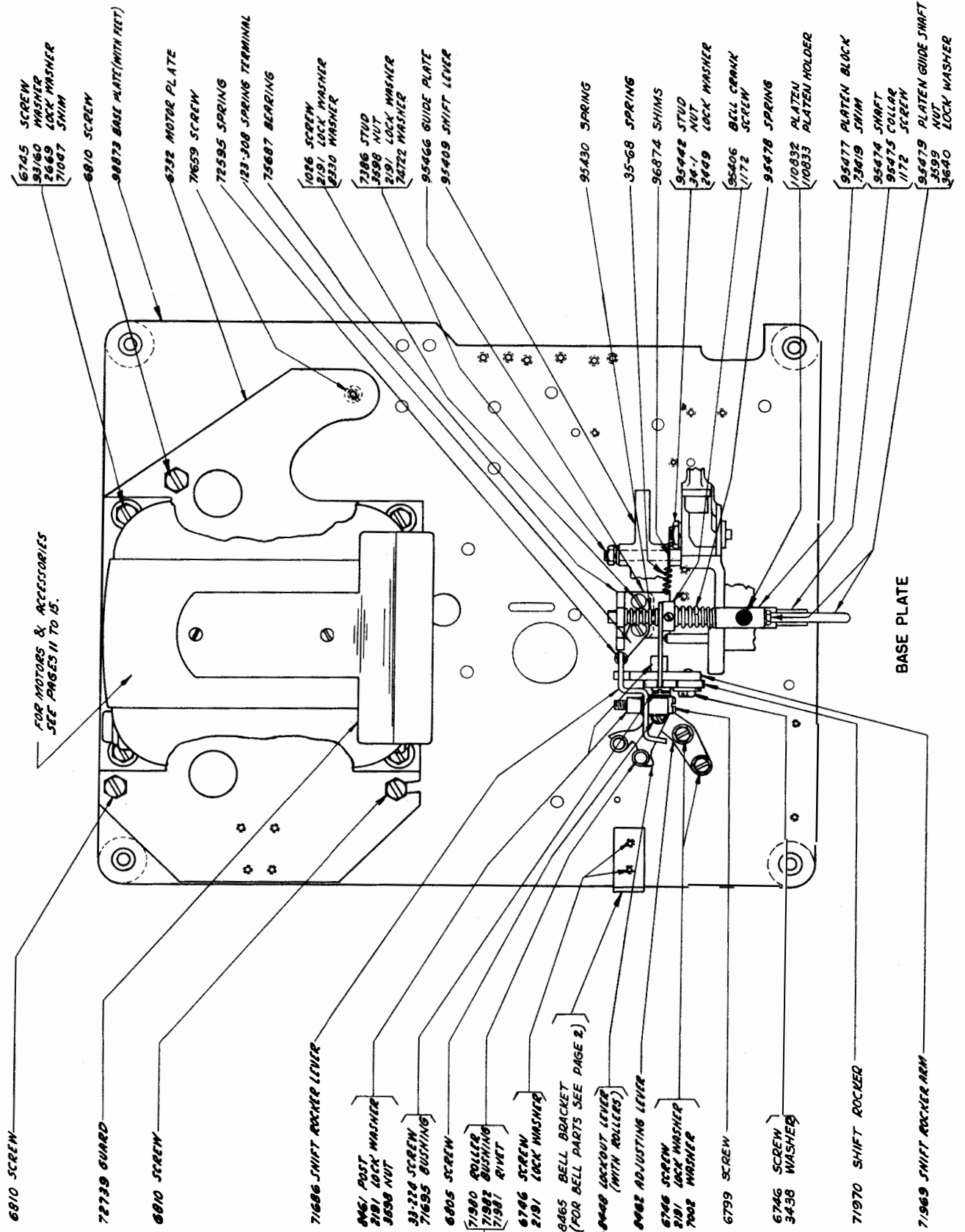
Western Electric Company

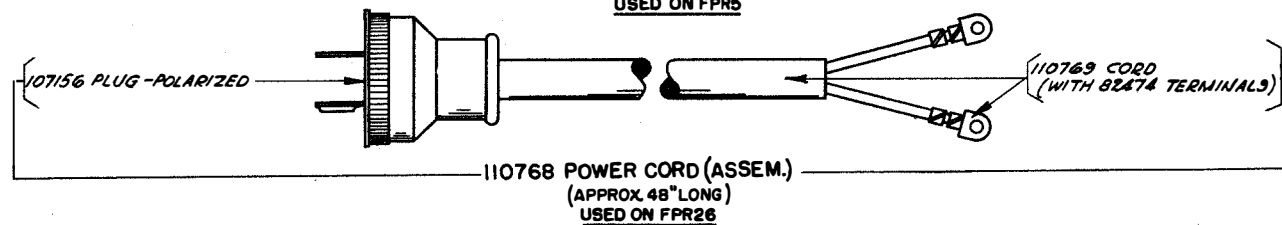
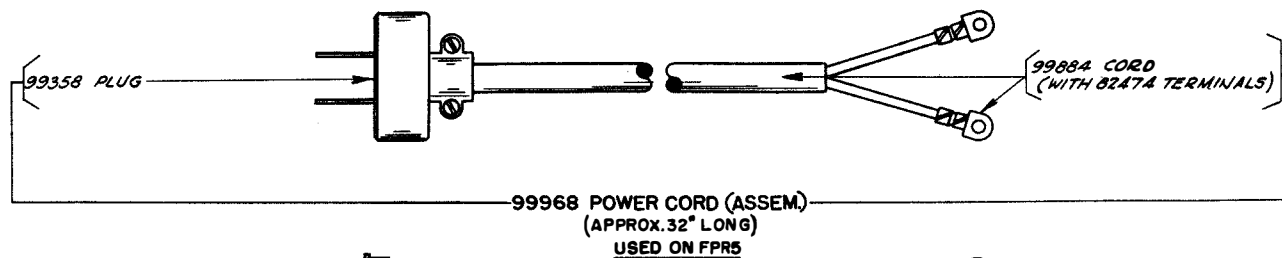
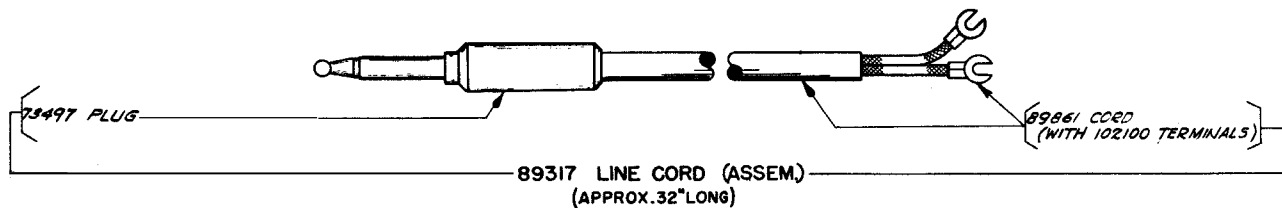
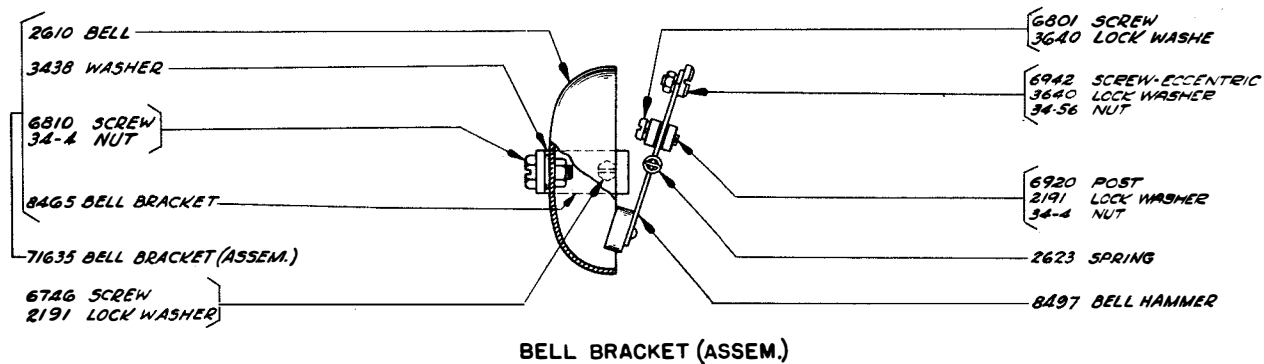
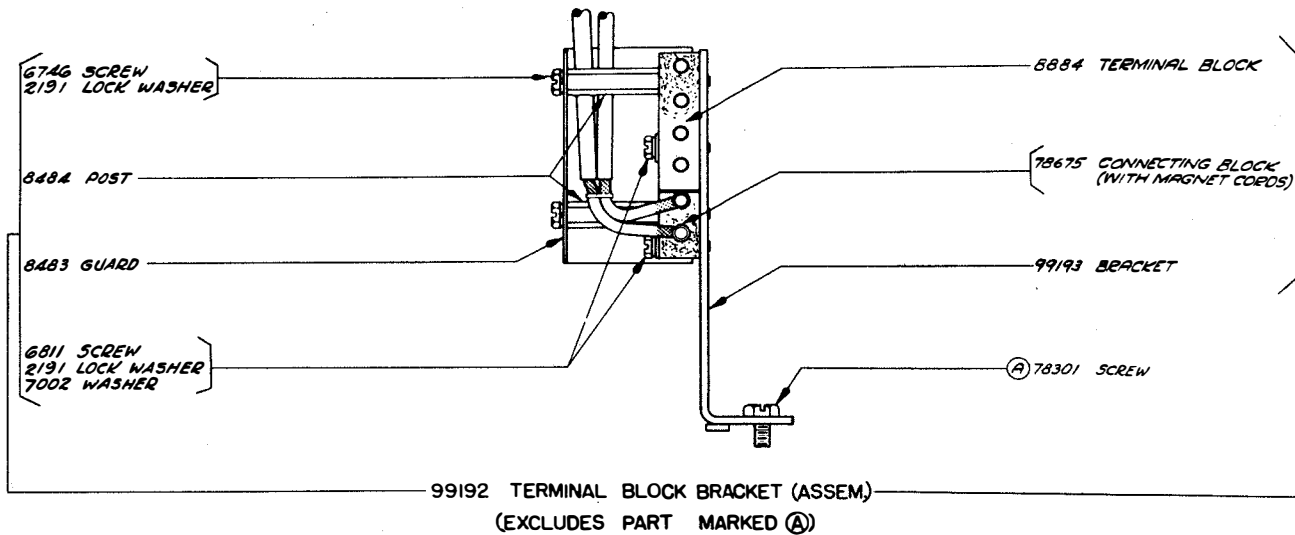
CHICAGO, U. S. A.

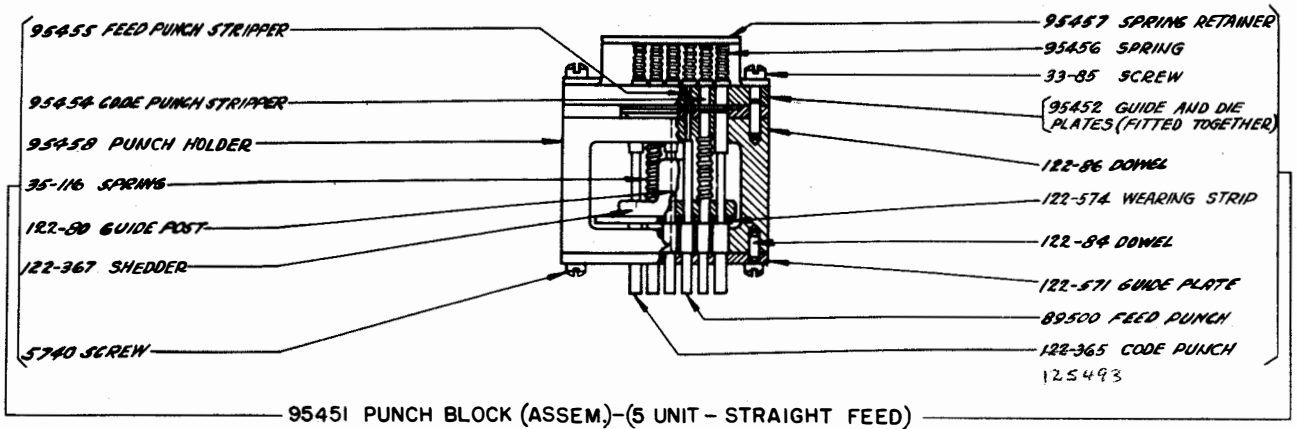
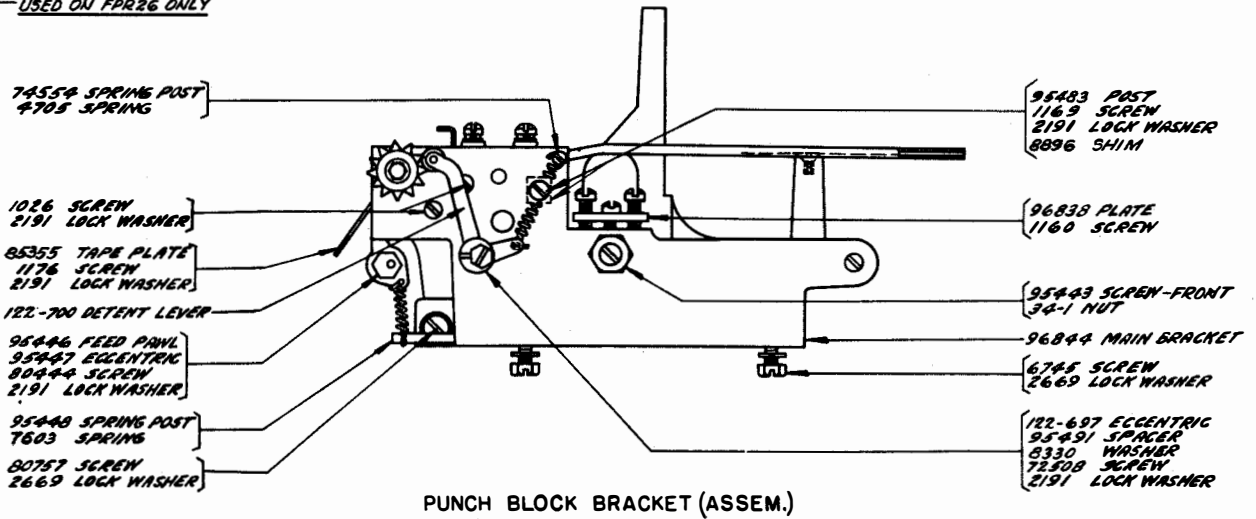
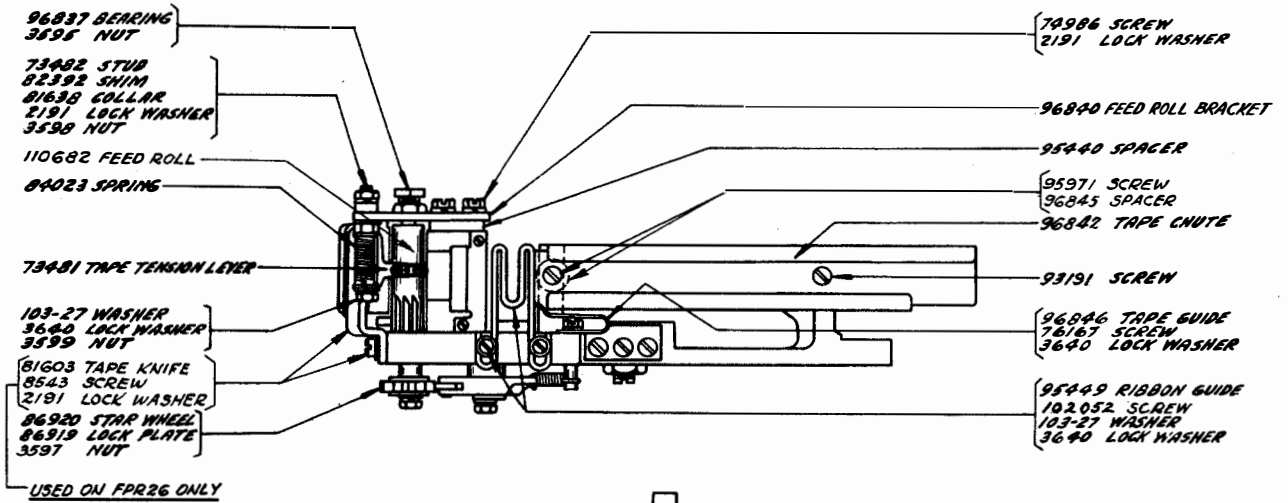
NOTE
UNLESS OTHERWISE SPECIFIED, ALL
PARTS LISTED IN THIS BULLETIN
ARE COMMON TO FPR5 AND FPR26.

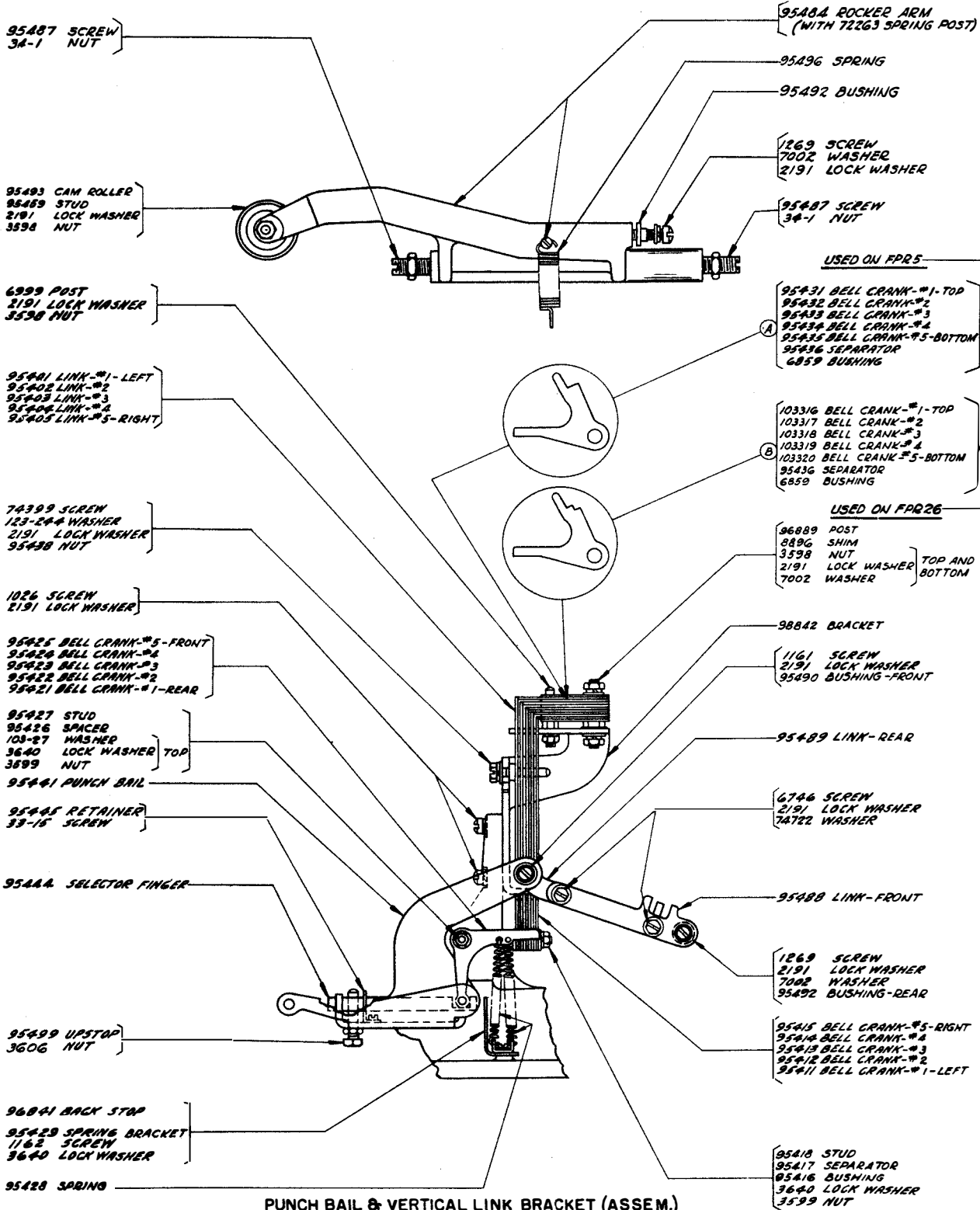
ALPHABETICAL INDEX

DESCRIPTION	PAGE NO.	DESCRIPTION	PAGE NO.
Base Plate - - - - -	1	Pallet Arrangement No. 235 - - - - -	16
Bell - - - - -	2	Pinions - - - - -	11,13
Bell Bracket (Assem.) - - - - -	2	Platen - - - - -	1
Bell Cranks - - - - -	4	Plugs - Cords - - - - -	2
Center Contact Governor (Assem.) - - - - -	14	Power Cords (Assem.) - - - - -	2
Code Bars - - - - -	16	Pull Bars - - - - -	16
Code Bar Locking Levers - - - - -	6	Pull Bar Springs - - - - -	16
Cords (Assem.) Line and Power - - - - -	2	Punch Bail and Vertical Link Bracket (Assem.)	4
Cover (Assem.) - - - - -	10	Punch Block (Assem.) - - - - -	3
Clutch Lever - - - - -	8	Punch Block Bracket (Assem.) - - - - -	3
Feed Roll - - - - -	3	Punch Cam - - - - -	8
Feed Pawl - - - - -	3	Range Scale (Assem.) - - - - -	9
Function Bars - - - - -	16	Resistor Bracket (Assem.) - - - - -	15
Gears - - - - -	5,7,8,11,13	Ribbon Feed Mechanism - - - - -	7
Governed Motor - - - - -	13	Ribbon Feed Shaft (Assem.) - - - - -	5
Governor Brush and Speed Adjusting Bracket (Assem.) - - - - -	14	Rocker Arm - - - - -	4
Guards - - - - -	1,11,13	Selector Unit (Assem.) - - - - -	9
Line Cord (Assem.) - - - - -	2	Shift Mechanism (Letters - Figures) - - - - -	1
Main Bail - - - - -	5	Synchronous Motor (New Style) - - - - -	11
Main Bail Bracket (Assem.) - - - - -	5	Synchronous Motor (Old Style) - - - - -	12
Main Bail Cam - - - - -	8	Tape Chute - - - - -	3
Main Shaft - - - - -	8	Tape Guide - - - - -	3
Main Shaft Bracket - - - - -	8	Tape Knife - - - - -	3
Motors - - - - -	11,12,13	Tape Reel Container (Assem.) - - - - -	10
Motor Arrangement "H" - - - - -	11	Terminal Block Bracket (Assem.) - - - - -	2
Motor Arrangement "GS" - - - - -	13	Terminal Block, Condenser and Resistor Bracket (Assem.) - - - - -	15
Motor - Governor Filter (Assem.) - - - - -	15	Type Bars - - - - -	16
Motor Plate - - - - -	1,11,13	Type Bars (With and Without Pallets) - - - - -	16
Numerical Index - - - - -	17	Type Bar Backstop (Assem.) - - - - -	7
Pallets - - - - -	16	Type Bar Basket (Assem.) - - - - -	6,7
Pallet Arrangement No. 193 - - - - -	16	Type Bar Segment - - - - -	7



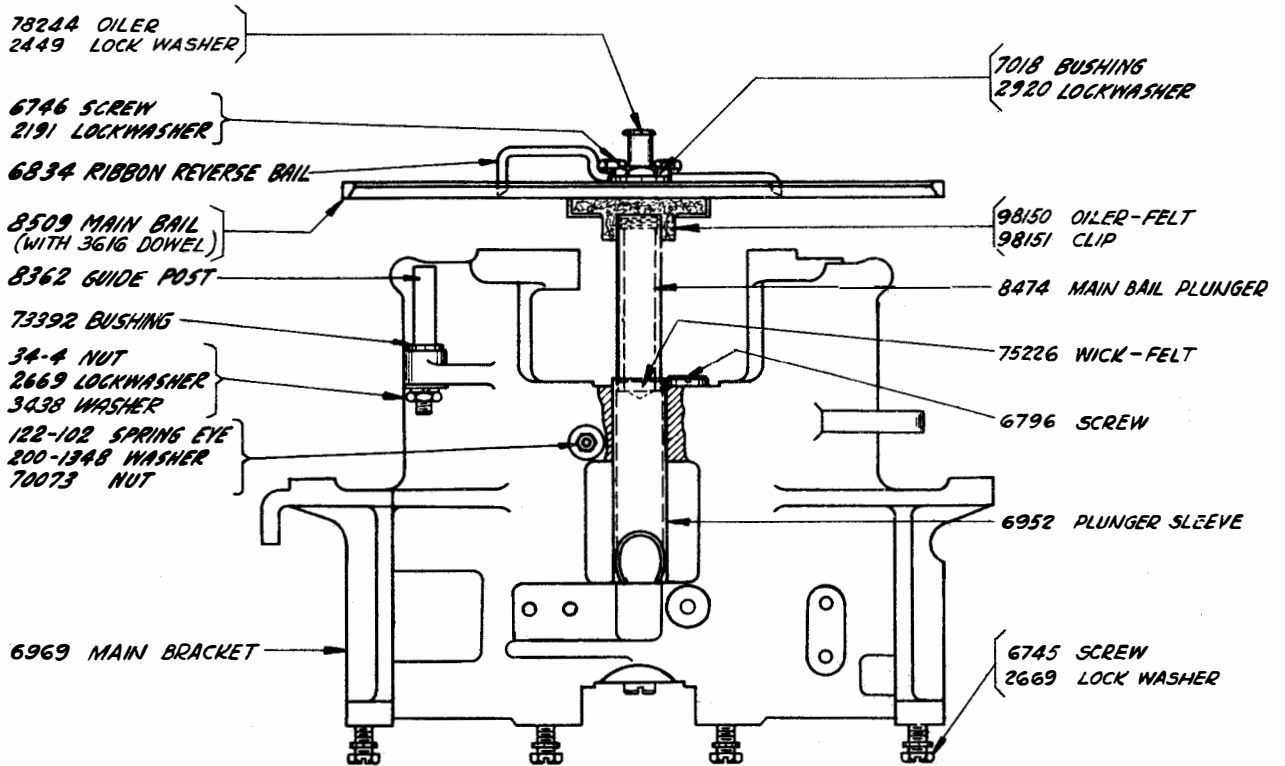




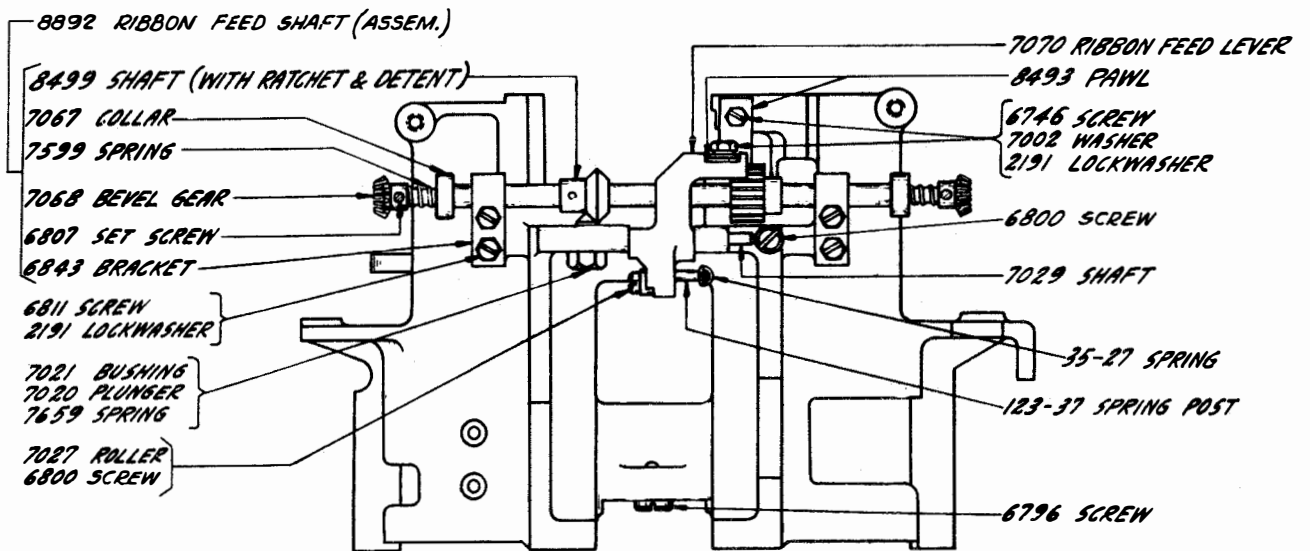


PUNCH BAIL & VERTICAL LINK BRACKET (ASSEM.)

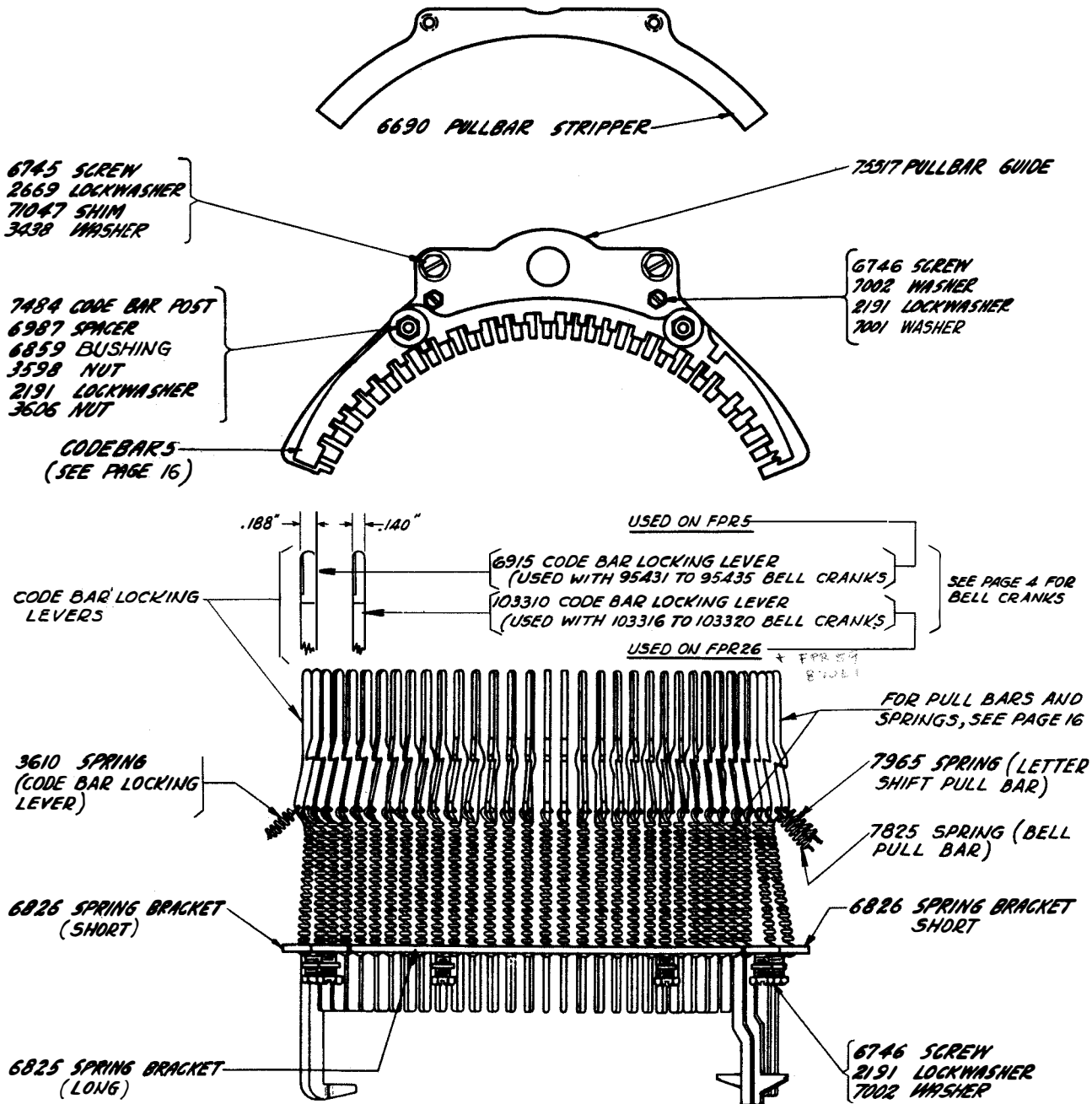
(A) USED WITH 6915 CODE BAR LOCKING LEVER } SEE PAGE 6 FOR CODE BAR LOCKING LEVERS
(B) USED WITH 103310 CODE BAR LOCKING LEVER }



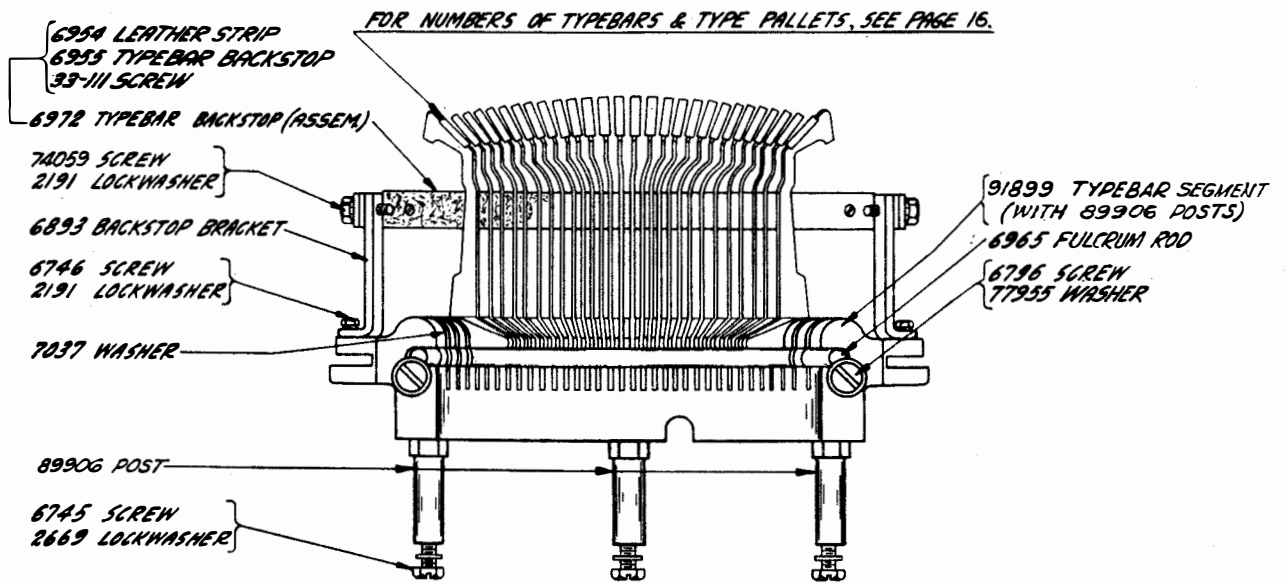
MAIN BAIL BRACKET (ASSEM.)
(FRONT VIEW)



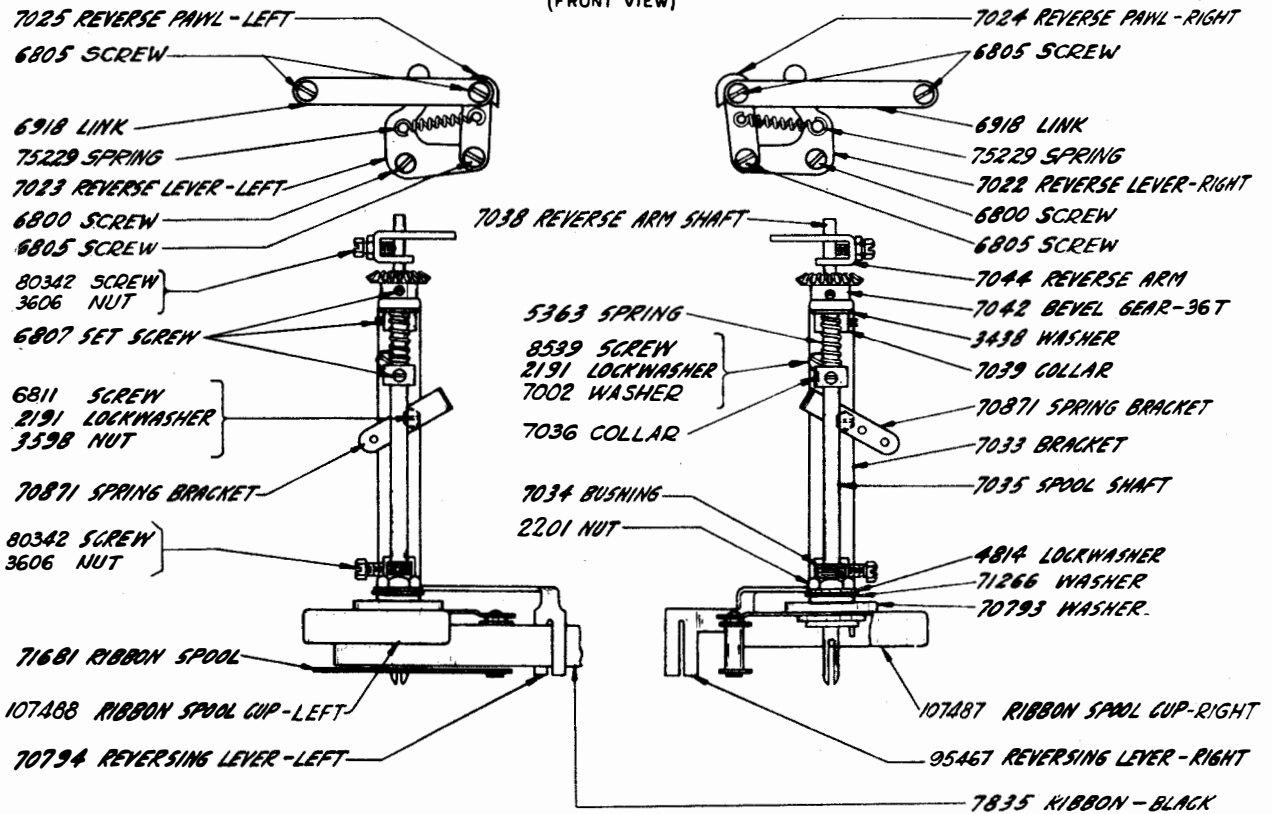
MAIN BAIL BRACKET (ASSEM.)
(REAR VIEW)



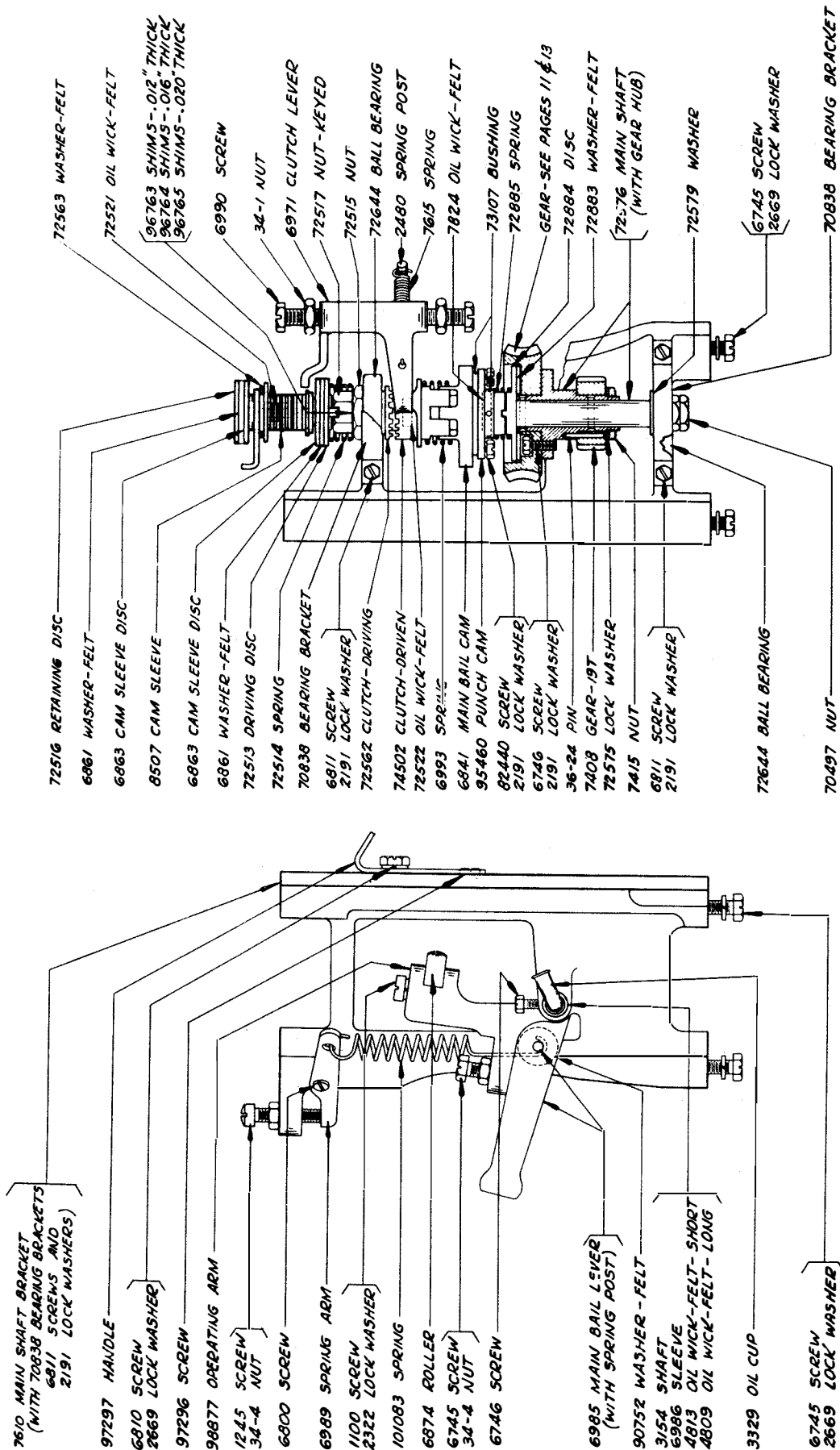
TYPE BAR BASKET (ASSEM.)
(REAR VIEW)



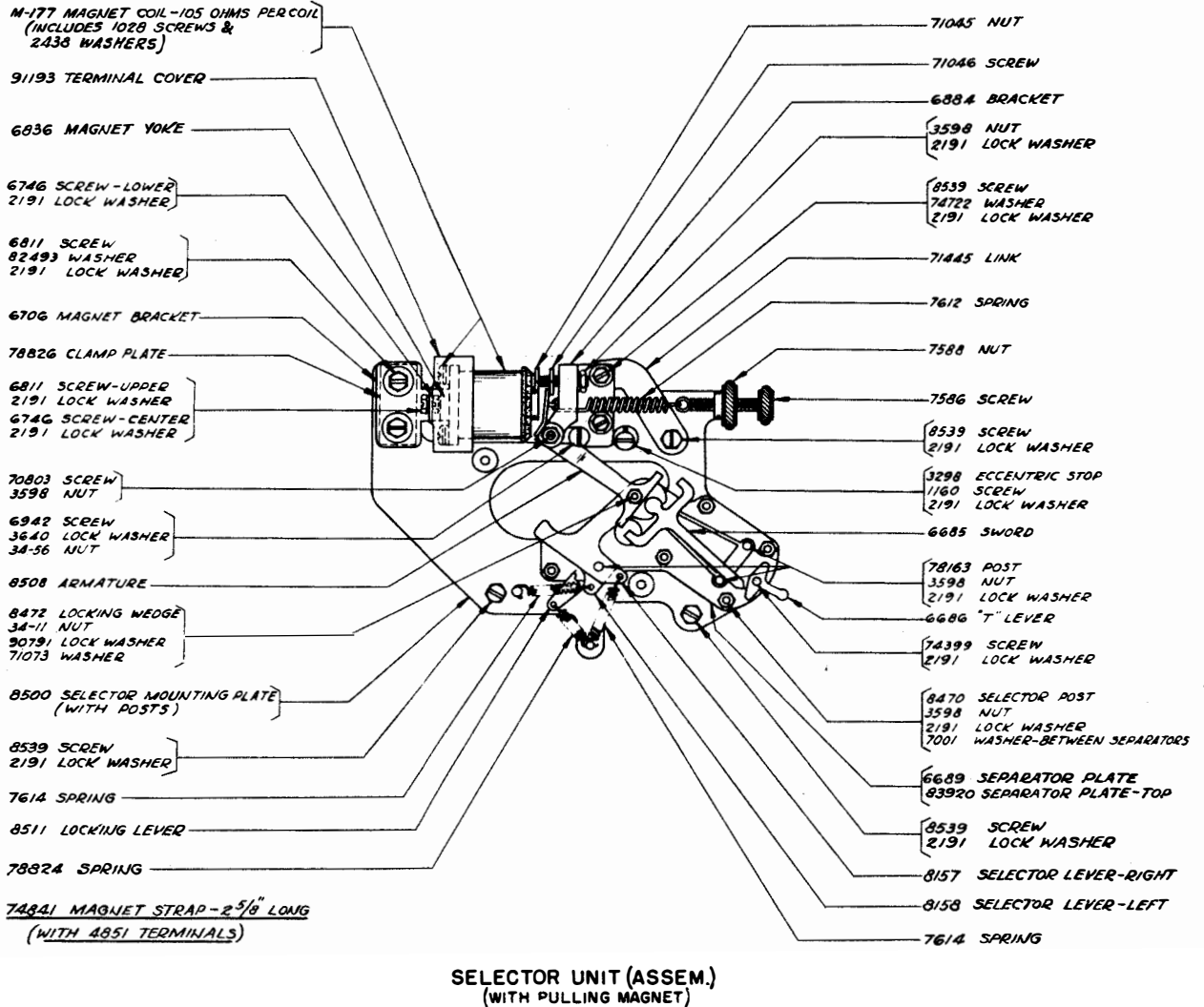
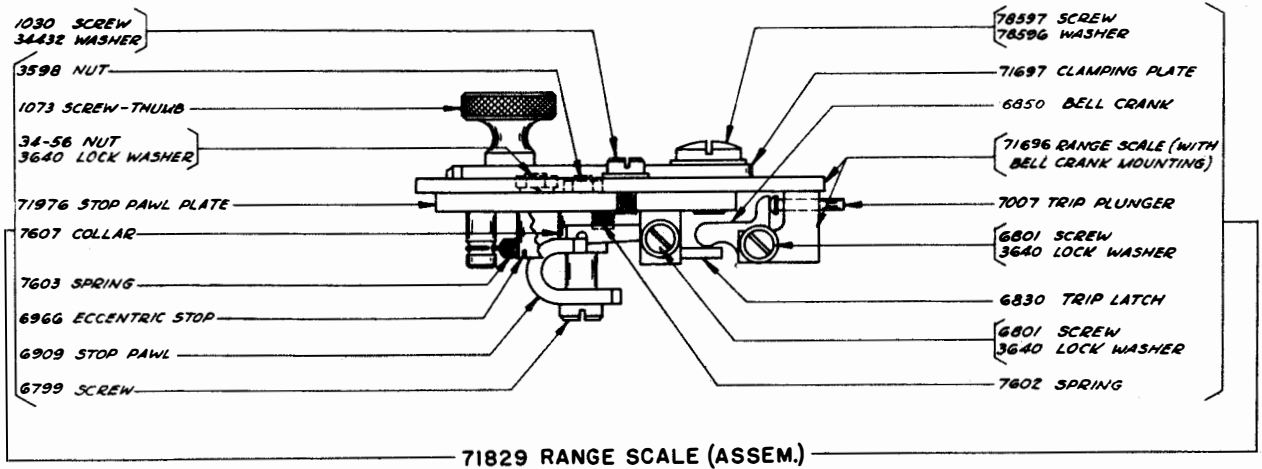
TYPE BAR BASKET (ASSEM.)
(FRONT VIEW)

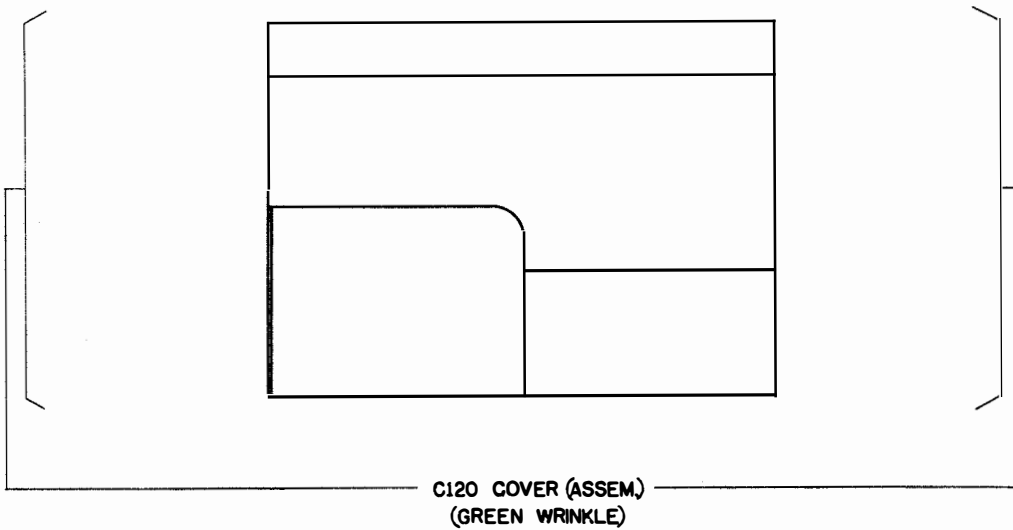
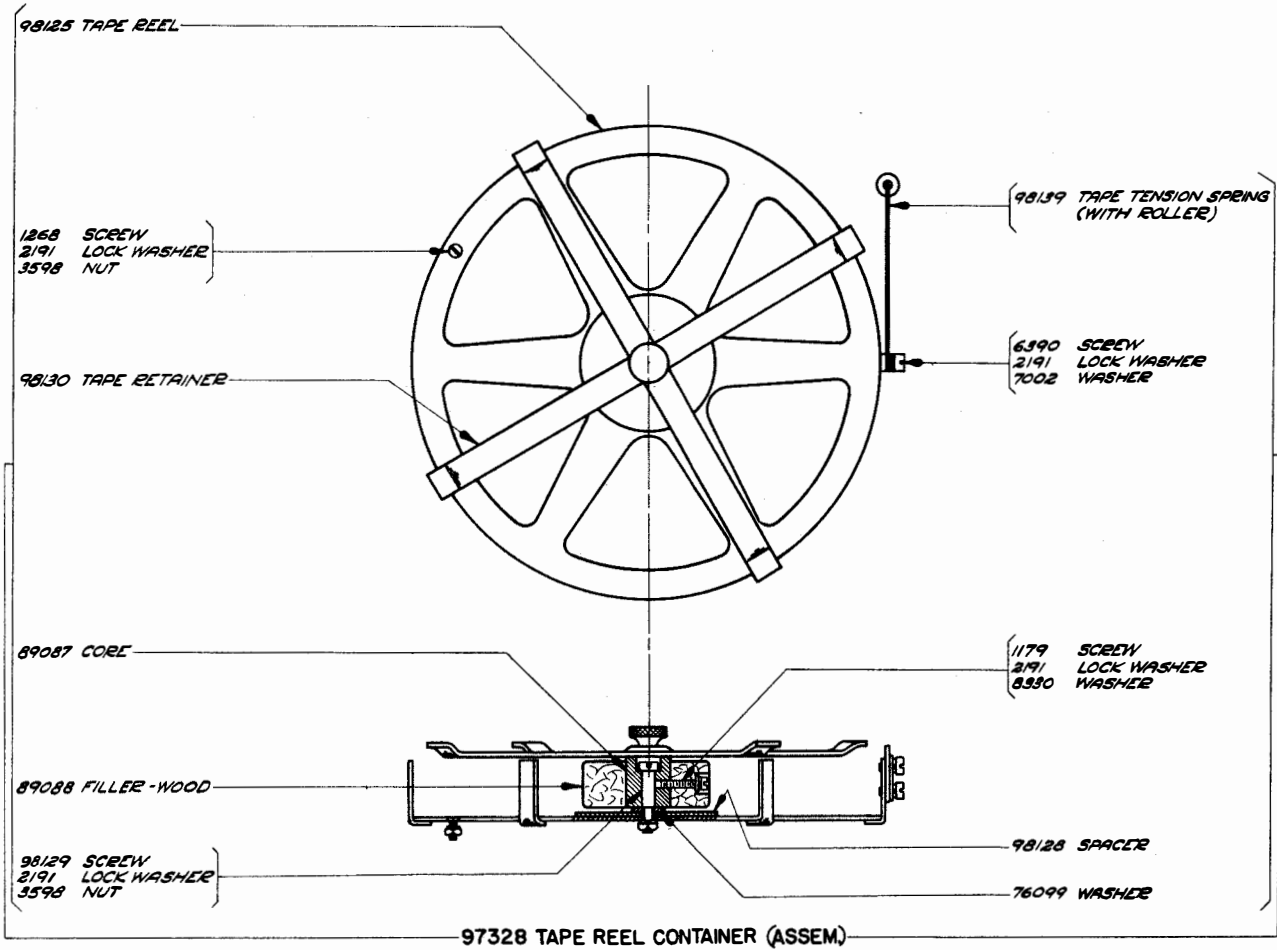


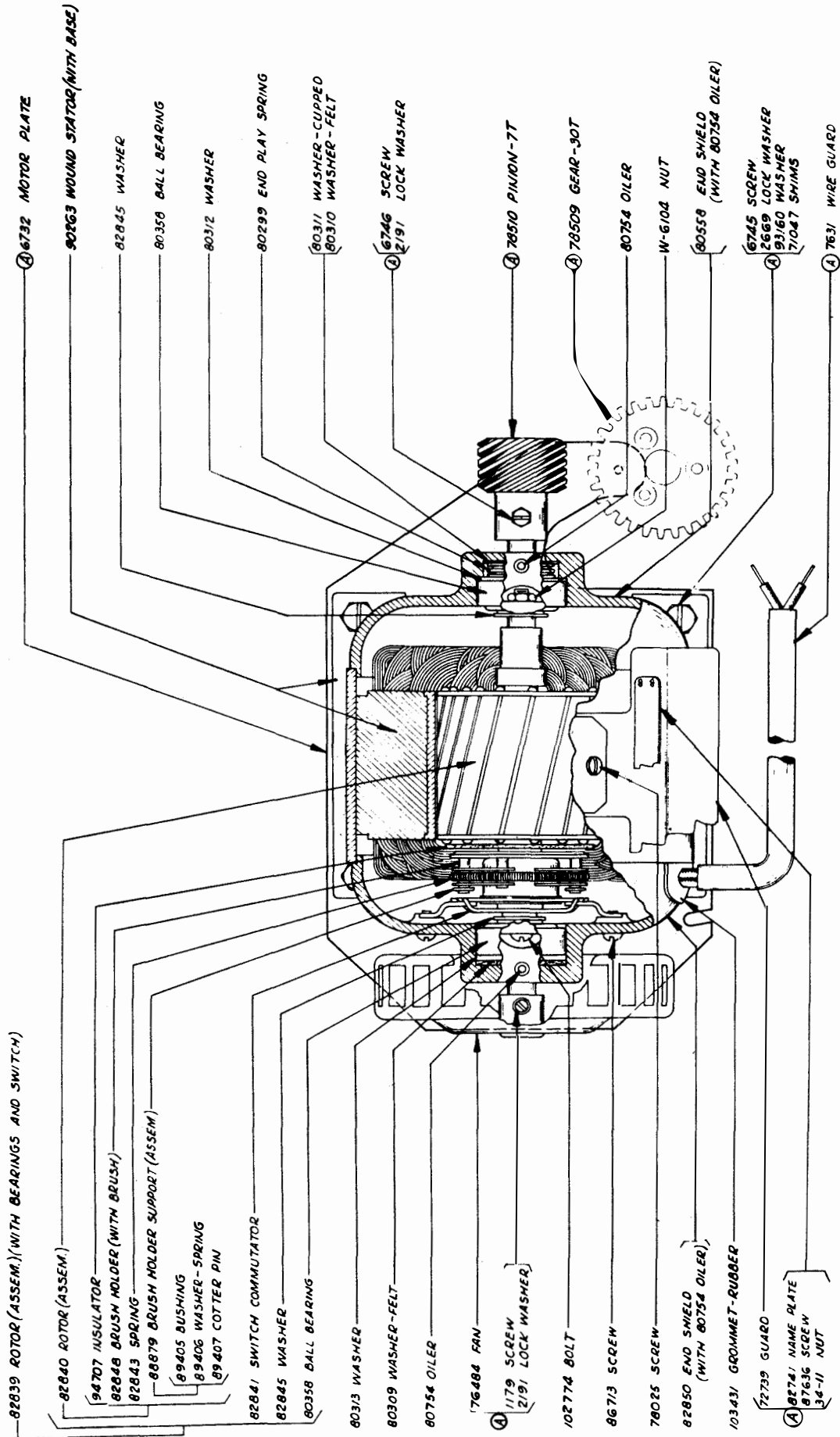
RIBBON FEED MECHANISM



MAIN SHAFT (ASSEM.)







82839 ROTOR (ASSEM.) (WITH BEARINGS AND SWITCH)

82840 ROTOR (ASSEM.)

94707 INSULATOR

82848 BRUSH HOLDER (WITH BRUSH)

82843 SPRING

88879 BRUSH HOLDER SUPPORT (ASSEM.)

89405 BUSHING

89406 WASHER - SPRING

89407 COTTER PIN

82841 SWITCH COMMUTATOR

82845 WASHER

80358 BALL BEARING

80313 WASHER

80309 WASHER - FELT

80754 OILER

76484 FAN

1179 SCREW
2/91 LOCK WASHER

102774 BOLT

86713 SCREW

78025 SCREW

82850 END SHIELD
(WITH 80754 OILER)

103431 GROMMET - RUBBER

72739 GUARD

82741 NAME PLATE

87636 SCREW

34-II NUT

6732 MOTOR PLATE

90263 WOUND STATOR (WITH BASE)

82845 WASHER

80358 BALL BEARING

80312 WASHER

80299 END PLAY SPRING

80311 WASHER - CUPPED

80310 WASHER - FELT

6746 SCREW
2/91 LOCK WASHER

76510 PINION - 77

76509 GEAR - 30T

80754 OILER

W-6104 NUT

80558 END SHIELD
(WITH 80754 OILER)

6745 SCREW

2669 LOCK WASHER

93160 WASHER

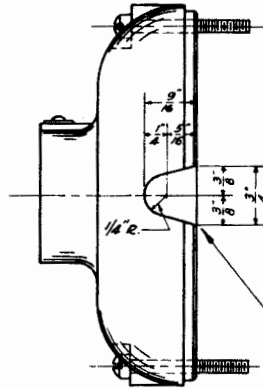
71047 SHIMS

7631 WIRE GUARD

NEW STYLE

82283 SYNCHRONOUS MOTOR, 1/40 H.P., 110 V., 60 CYCLE, A.C. (G.E. MODEL 55H25AB11B) - EXCLUDES PARTS MARKED (A)
(SEE PAGE 12 FOR OLD STYLE)

86933 MOTOR UNIT (ASSEM.) - INCLUDES 82283 MOTOR AND PARTS MARKED (A) - (MOTOR ARRANGEMENT "H")

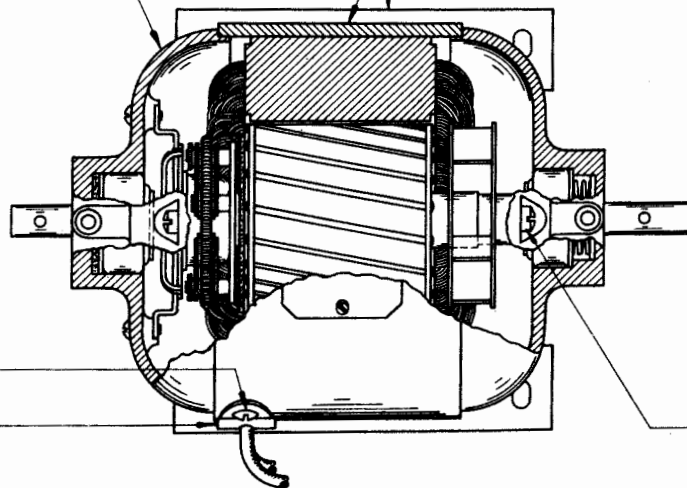


OLD STYLE 82850 END SHIELDS MAY BE WORKED OVER FOR USE WITH NEW STYLE MOTORS BY ADDING WIRE OUTLET HOLE AS ILLUSTRATED.

82850 END SHIELD - HAS BEEN REDESIGNED BUT RETAINS ITS ORIGINAL PART NUMBER. THE NEW STYLE END SHIELD (WITH WIRE OUTLET HOLE) CAN ALSO BE USED ON THE OLD STYLE MOTORS. THE OLD STYLE END SHIELD (WITHOUT WIRE OUTLET HOLE) CANNOT BE USED ON NEW STYLE MOTORS UNLESS IT BE WORKED OVER AS ILLUSTRATED ABOVE.

90263 WOUND STATOR (WITH BASE) - HAS BEEN REDESIGNED BUT RETAINS ITS ORIGINAL PART NUMBER. WHEN REPLACING AN OLD STYLE STATOR (WITH TAPPED HOLES FOR THE END SHIELD CLAMPING STUDS) WITH A NEW STYLE STATOR (WITH BODY HOLES FOR THE END SHIELD BOLTS) THE FOLLOWING NEW STYLE PARTS SHOULD BE ORDERED:

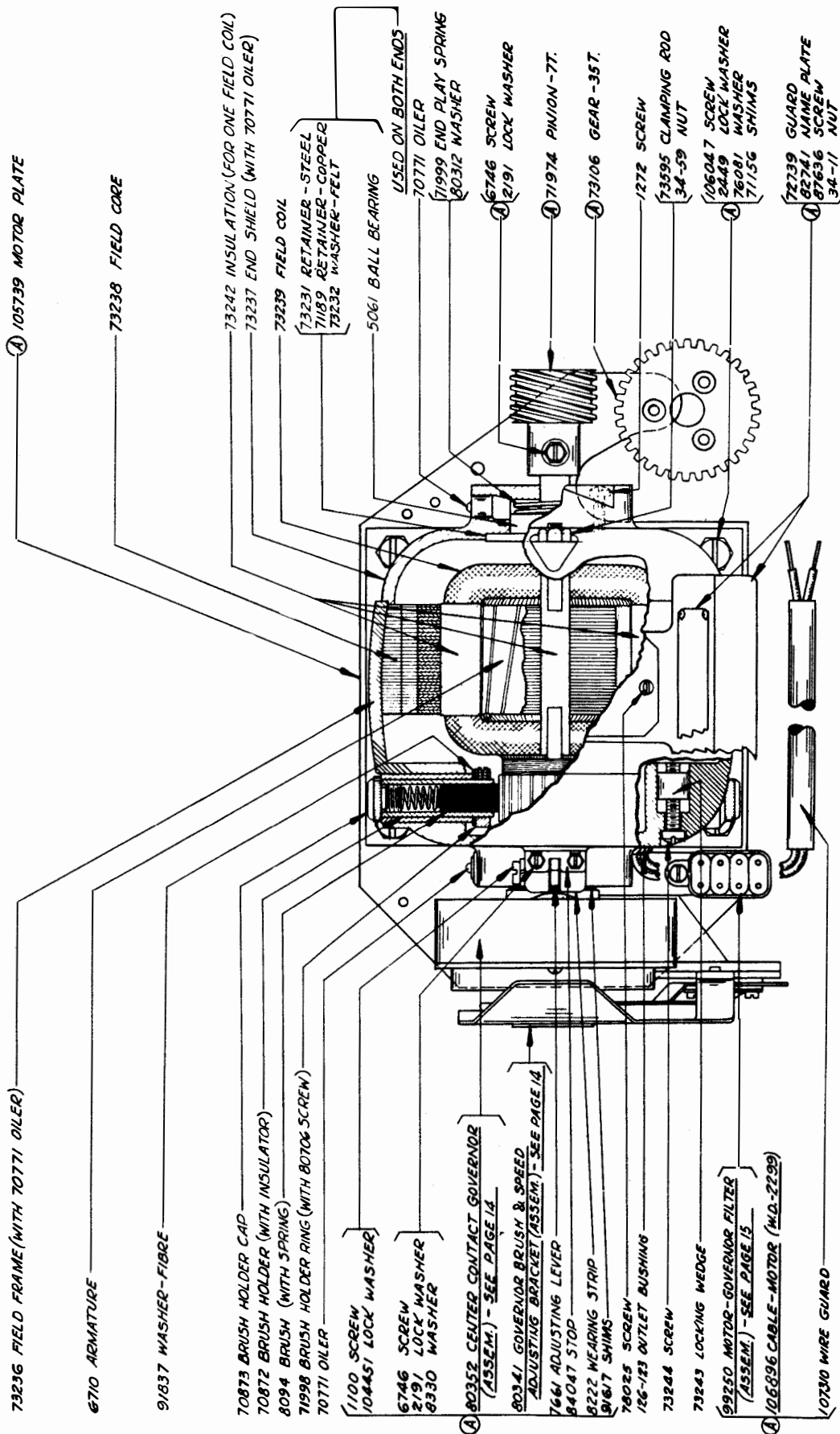
- 90263 WOUND STATOR (WITH BASE).....1
- 82850 END SHIELD.....1
- (OR WORK OVER OLD STYLE END SHIELD)
- 103431 GROMMET - RUBBER.....1
- 102774 BOLT.....2
- W-6104 NUT.....2



OLD STYLE

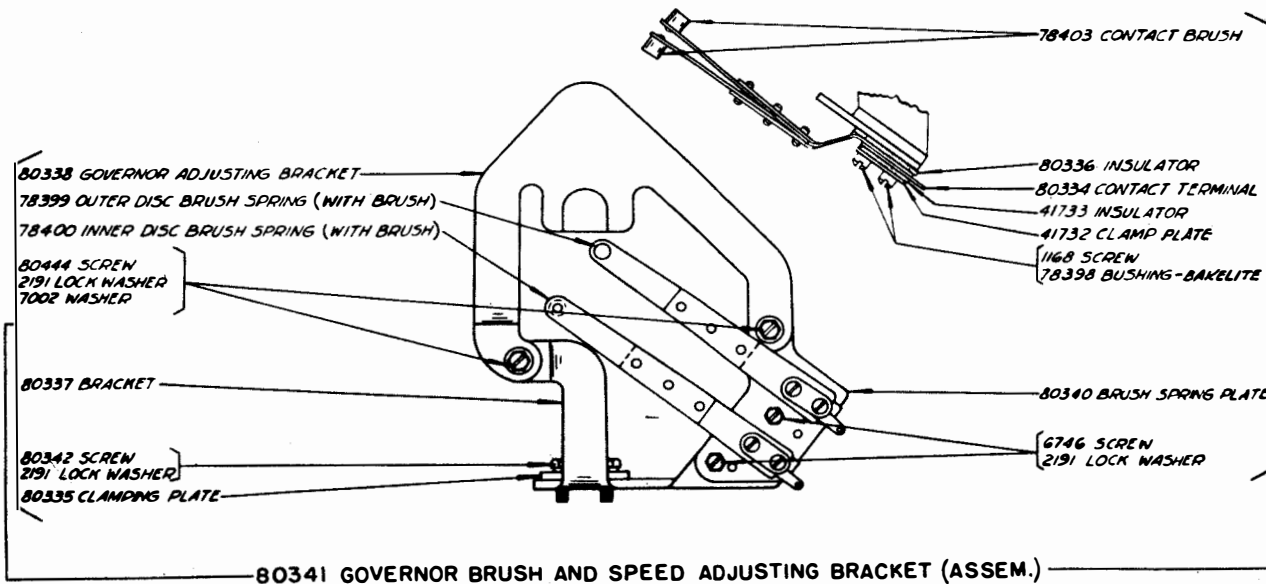
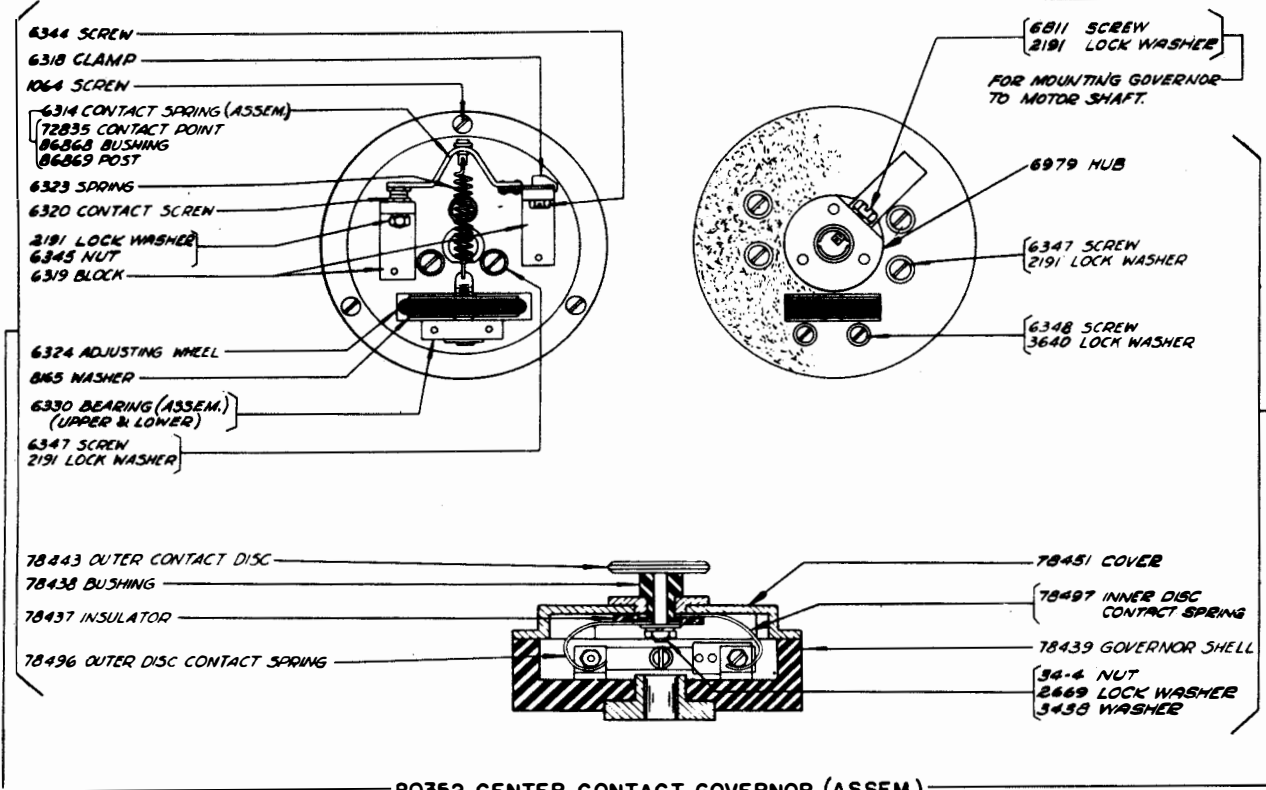
82283 SYNCHRONOUS MOTOR, 1/40 H.P., 110 V., 60 CYCLE A.C. (G.E. MODEL 5SH25AB11)

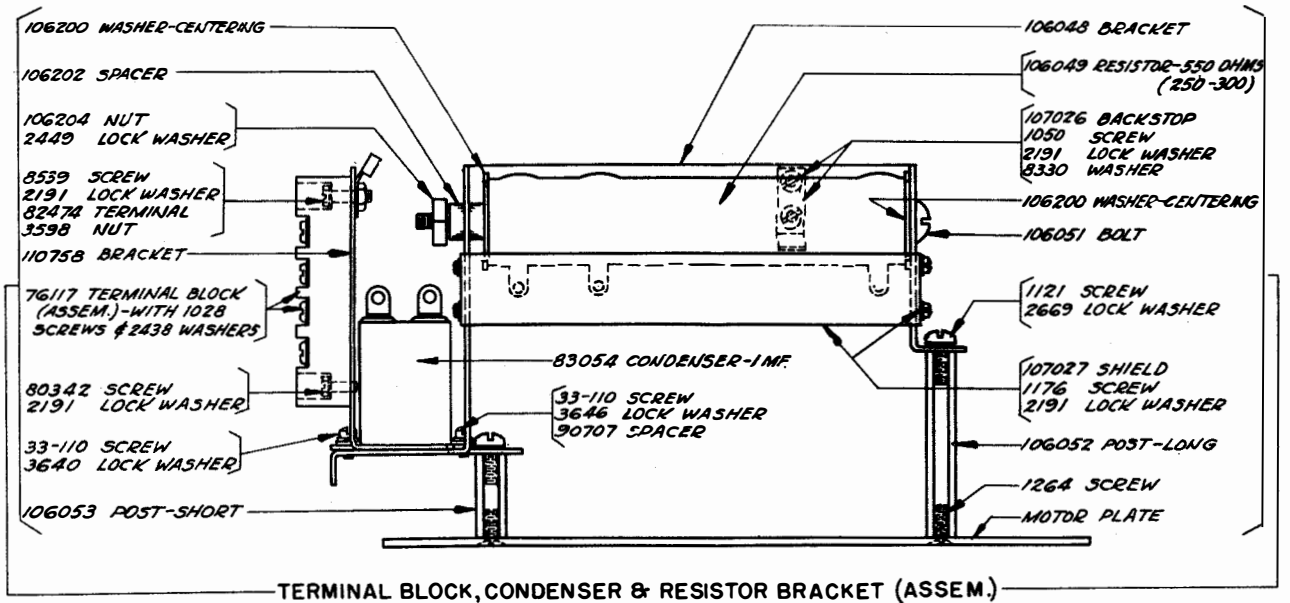
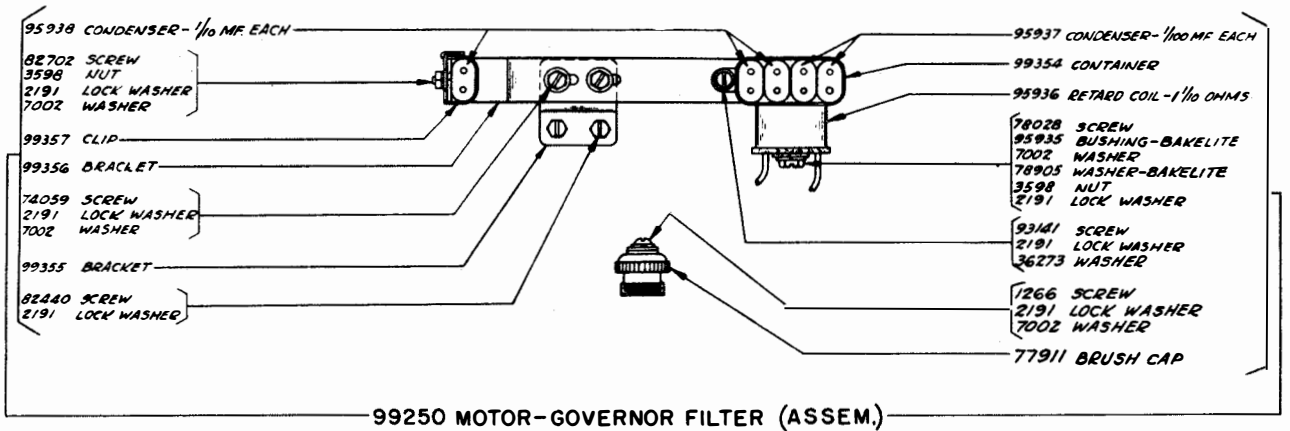
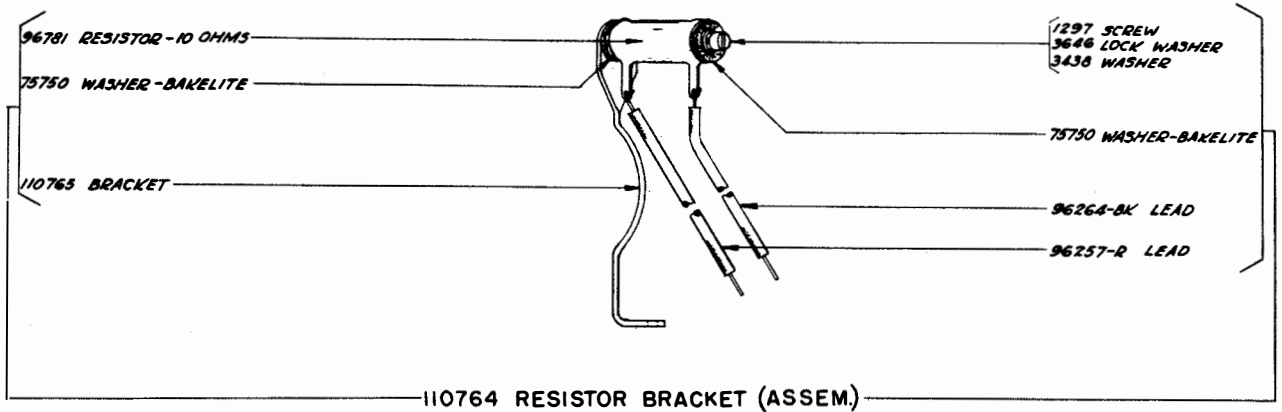
(PARTS NOT LISTED SAME AS ON NEW STYLE MOTOR, SHOWN ON PAGE 11)



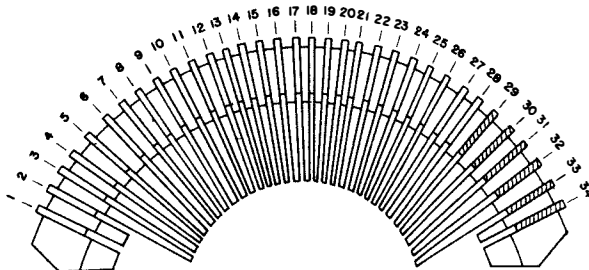
6708 GOVERNED MOTOR, 1/25 H.P., 110 V., 50-60 CYCLE, A.C. SERIES (G.E. MODEL 5BA65AA77)-EXCLUDES PARTS MARKED (A)
 110846 MOTOR UNIT (ASSEM.)-INCLUDES ALL PARTS SHOWN ON THIS PAGE AND PAGES 14 & 15.
 (MOTOR ARRANGEMENT "GS")

7105 TARGET-10 SPOT





CODE BARS	
NO. STAMPED ON BAR	CATALOG NO.
1J	95461
2J	95462
3J	95463
4J	95464
5J	95465



NOTE
CHECK CAREFULLY THE POSITION OF THE PULL BARS IN SEGMENT AND THE ARRANGEMENT OF THE TYPE PALLETS ON THE TYPE BARS. IF THESE DIFFER IN ANYWAY WITH THE ARRANGEMENT SHOWN ON THIS PAGE, THE PARTS SHOULD BE ORDERED BY NAME.
FOR EXAMPLE ORDER :
TYPE PALLET ----- (T 5)
TYPE BAR #13 WITH PALLET-(T 5)

NUMBER OF POSITION IN SEGMENT	PULL OR FUNCTION BARS		TYPE BARS (WITHOUT PALLET)		PALLET		TYPE BARS (WITH PALLET)	PULL AND FUNCTION BAR SPRINGS	USED IN PALLET ARRANGEMENT	
	CATALOG NUMBER	DESCRIPTION	CATALOG NUMBER	NUMBER STAMPED ON BAR	CATALOG NUMBER	DESCRIPTION			CATALOG NUMBER	193
1										
2	6916	LTRS. SHIFT						7965		
3	8457	BELL						7825		
4	8458	"S" PULL BAR	7421	1	98923	S	99028	7634	X	X
5	6692	STANDARD	7422	2	98941	X /	98968	7634	X	X
6	6692	"	7423	3	98915	Q 1	98969	7634	X	X
7	6692	"	7424	4	98910	V	98971	7634	X	X
8	6692	"	7425	5	98919	G &	98974	7634	X	X
9	6692	"	7426	6	98916	W 2	98975	7634	X	X
10	6692	"	7427	7	98922	F	98979	7634	X	
10	6692	"	7427	7	98926	F !	98977	7634		X
11	6692	"	7428	8	98911	C	98981	7634	X	X
12	6692	"	7429	9	98943	D \$	98984	7634	X	X
13	6692	"	7430	10	98928	R 4	98985	7634	X	X
14	6692	"	7431	11	98921	J	99027	7634	X	
14	6692	"	7431	11	98902	J ♡	98987	7634		X
15	6692	"	7432	12	98912	A -	98991	7634	X	X
16	6692	"	7433	13	98931	T 5	98992	7634	X	X
17	6692	"	7434	14	98930	E 3	98993	7634	X	X
18	6692	"	7435	15	98925	N ♡	98997	7634	X	
18	6692	"	7435	15	98909	N ♡	98995	7634		X
19	6692	"	7436	16	98917	I 8	98998	7634	X	X
20	6692	"	7437	17	98933	O 9	98999	7634	X	X
21	6692	"	7438	18	98920	H	99001	7634	X	X
22	6692	"	7439	19	98945	L)	99004	7634	X	X
23	6692	"	7440	20	98932	U 7	99006	7634	X	X
24	6692	"	7441	21	98942	M %	99008	7634	X	
24	6692	"	7441	21	98904	M	99007	7634		X
25	6692	"	7442	22	98929	Y 6	99010	7634	X	X
26	6692	"	7443	23	98918	P O	99011	7634	X	
26	6692	"	7443	23	104845	P	104951	7634		X
27	6692	"	7444	24	98927	B ?	99013	7634	X	X
28	6692	"	7445	25	98944	K (99016	7634	X	X
29	6692	"	7446	26	98903	Z ♡	99019	7634	X	X
30	6692	"	7447	27	98907	• ♡	99022	7634	X	
30	6692	"	7447	27	101582	< <	99032	7634		X
31	6692	"	7448	28	98914	= ♡	99025	7634	X	
31	6692	"	7448	28	101583	≡ ≡	99033	7634		X
32										
33	6917	FIGS. SHIFT						7825		
34	(A)	CODE BAR LOCKING LEVER						3610		

(A) SEE PAGE 6 FOR ORDERING INFORMATION.

NUMERICAL INDEX

C120	Cover (Assem.), 10	3640	Lock Washer, 1, 2, 3, 4, 9,	6969	Main Bracket, 5
M-177	Magnet Coil, 105 Ohms, 9		14, 15	6971	Clutch Lever, 8
W-6104	Nut (.164-36 Hex.), 11, 12	3646	Lock washer, 15	6972	Typebar Backstop (Assem.), 7
33-15	Screw (2-15x1/8), 4	4809	Oil Wick, Felt, Long, 8	6979	Hub, 14
33-85	Screw (2-56x3/8), 3	4813	Oil Wick, Felt, Short,	6985	Main Bail Lever, 8
33-110	Screw (4-40x3/16), 15		8	6986	Sleeve, 8
33-111	Screw (2-56x3/16), 7	4814	Lock Washer, 7	6987	Spacer, 6
33-224	Screw (6-40 Shoulder), 1	4851	Terminals, 9	6989	Spring Arm, 8
34-1	Nut (1/4-32 Hex.), 1, 3, 4, 8	5061	Ball Bearing, 13	6990	Screw (1/4-32 Pilot), 8
34-4	Nut (10-32 Hex.), 2, 5, 8, 14	5363	Spring, 7	6993	Spring, 8
34-11	Nut (2-56 Hex.), 9, 11, 13	5740	Screw (2-56x1/4), 3	6999	Post, 4
34-56	Nut (4-40 Hex.), 2, 9	6314	Contact Spring, (Assem.)	7001	Washer, 9
34-59	Nut (10-32 Hex.), 13		14	7002	Washer, 1, 2, 4, 5, 6, 7, 14, 15
35-27	Spring, 5	6318	Clamp, 14	7007	Trip Plunger, 9
35-68	Spring, 1	6319	Block, 14	7018	Bushing, 5
35-116	Spring, 3	6320	Contact Screw, 14	7020	Plunger, 5
36-24	Pin, 8	6323	Spring, 14	7021	Bushing, 5
103-27	Washer, 3, 4	6324	Adjusting Wheel, 14	7022	Reverse Lever, Right, 7
122-80	Guide Post, 3	6330	Bearing (Assem.), 14	7023	Reverse Lever, Left, 7
122-84	Dowel, 3	6344	Screw (6-32x11/32), 14	7024	Reverse Pawl, Right, 7
122-86	Dowel, 3	6345	Nut (6-32 Hex.), 14	7025	Reverse Pawl, Left, 7
122-102	Spring Eye, 5	6347	Screw (6-32x3/8), 14	7027	Roller, 5
122-365	Code Punch, 3	6348	Screw (4-36x3/4), 14	7029	Shaft, 5
122-367	Shedder, 3	6390	Screw (6-40x3/16), 10	7033	Bracket, 7
122-571	Guide Plate, 3	6685	Sword, 9	7034	Bushing, 7
122-574	Wearing Strip, 3	6686	"T" Lever, 9	7035	Spool Shaft, 7
122-697	Eccentric, 3	6689	Separator Plate, 9	7036	Collar, 7
122-700	Detent Lever, 3	6690	Pullbar Stripper, 6	7037	Washer, 7
123-37	Spring Post, 5	6692	Standard, 16	7038	Reverse Arm Shaft, 7
123-244	Washer, 4	6706	Magnet Bracket, 9	7039	Collar, 7
123-308	Spring Terminal, 1	6708	Governed Motor, 1/25 H.	7042	Bevel Gear, 36T, 7
126-123	Outlet Bushing, 13		P. 110V., 50-60 Cyc.,	7044	Reverse Arm, 7
200-1348	Washer, 5		A.C. Series, (G.E.	7067	Collar, 5
1026	Screw (6-40x3/8), 1, 3, 4		Model 5BA65AA77), 13	7068	Bevel Gear, 5
1028	Screw (6-40x1/4), 9, 15	6710	Armature, 13	7070	Ribbon Feed Lever, 5
1030	Screw (6-40 Shoulder), 9	6732	Motor Plate, 1, 11	7105	Target, 10 Spot, 14
1050	Screw (6-40x7/32), 15	6745	Screw (10-32x1/2), 1, 3,	7386	Stud, 1
1064	Screw (6-32x1/4), 14		5, 6, 7, 8, 11	7408	Gear, 19T, 8
1073	Screw (6-40 Thumb), 9	6746	Screw (6-40x5/16), 1, 2, 4,	7415	Nut (1/2-32 Hex.), 8
1100	Screw (1/4-32 Pilot), 8, 13		5, 6, 7, 8, 9, 11, 13, 14		
1121	Screw (10-32x3/8), 15	6796	Screw (10-32x1/8), 5, 7		
1160	Screw (6-40x5/16), 3, 9	6799	Screw (6-40 Shoulder), 1,		
1161	Screw (6-40x1/4), 4		9	7421	Type Bars (without Pallets)
1162	Screw (4-40x1/4), 4	6800	Screw (6-40 Shoulder), 5,	7421	#1, 16
1168	Screw (4-40x5/16), 14		7, 8	7422	#2, 16
1169	Screw (6-40x7/16), 3	6801	Screw (4-40 Pilot), 2, 9	7423	#3, 16
1172	Screw (2-56x5/16), 1	6805	Screw (6-40 Shoulder), 1,	7424	#4, 16
1176	Screw (6-40x3/16), 3, 15		7	7425	#5, 16
1179	Screw (6-40x5/8), 10, 11	6807	Screw (6-40 Set), 5, 7	7426	#6, 16
1245	Screw (10-32x1), 8	6810	Screw (10-32x3/8), 1, 2, 8	7427	#7, 16
1264	Screw (10-32x1/2 Flat	6811	Screw (6-40x5/8), 2, 5, 7, 8	7428	#8, 16
	Head), 15		9, 14	7429	#9, 16
1266	Screw (6-32x7/16), 15	6825	Spring Bracket, Long, 6	7430	#10, 16
1268	Screw (.138-40x5/16), 10,	6826	Spring Bracket, Short, 6	7431	#11, 16
1269	Screw (6-40x1/2), 4	6830	Trip Latch, 9	7432	#12, 16
1272	Screw (6-40x11/16), 13	6831	Cam Sleeve Disc, 8	7433	#13, 16
1297	Screw (6-40x2-7/16), 15	6834	Ribbon Reverse Bail, 5	7434	#14, 16
2191	Lock Washer, 1 to 11, 13,	6836	Magnet Yoke, 9	7435	#15, 16
	14, 15	6841	Main Bail C m, 8	7436	#16, 16
2201	Nut (5/16-32 Hex.), 7	6843	Bracket, 5	7437	#17, 16
2322	Lock Washer, 8	6850	Bell Crank, 9	7438	#18, 16
2438	Washer, 9, 15	6859	Bushing, 4, 6	7439	#19, 16
2449	Lock Washer, 1, 5, 13, 15	6861	Washer, Felt, 8	7440	#20, 16
2480	Spring Post, 8	6884	Bracket, 9	7441	#21, 16
2610	Bell, 2	6893	Backstop Bracket, 7	7442	#22, 16
2623	Spring, 2	6909	Stop Pawl, 9	7443	#23, 16
2669	Lock Washer, 1, 3, 5, 6, 7, 8,	6915	Code Bar Locking Lever,	7444	#24, 16
	11, 14, 15		4, 6	7445	#25, 16
2920	Lock washer, 5	6916	Pull Bar, Letters Shift	7446	#26, 16
3154	Shaft, 8		16	7447	#27, 16
3298	Eccentric Stop, 9	6917	Pull Bar, Figures Shift	7448	#28, 16
3329	Oil Cup, 8		16	7586	Code Bar Post, 6
3438	Washer, 1, 2, 5, 6, 14, 15	6918	Link, 7	7588	Screw (10-32 Special), 9
3595	Nut (1/4-32 Hex.), 3	6920	Post, 2	7599	Nut (10-32 Special), 9
3597	Nut (5-32-40 Hex.), 3	6942	Screw (4-40 Eccentric),	7602	Spring, 5
3598	Nut (6-40 Hex.), 1, 3, 4, 6,		2, 9	7603	Spring, 9
	7, 9, 10, 15	6952	Plunger Sleeve, 5	7603	Spring, 3, 9
3599	Nut (4-40 Hex.), 1, 3, 4,	6954	Leather Strip, 7	7607	Collar, 9
3606	Nut (6-40 Hex.), 4, 6, 7	6955	Typebar Backstop, 7	7610	Main Shaft, 8
3610	Spring, 6, 16	6965	Fulcrum Rod, 7	7612	Spring, 9
3616	Dowel, 5	6966	Eccentric Stop, 9	7614	Spring, 9
				7615	Spring, 8

NUMERICAL INDEX

7631	Wire Guard,11	71981	Rivet,1	78443	Outer Contact Disc,14
7634	Spring,16	71982	Bushing,1	78451	Cover,14
7659	Spring,5	71998	Brush Holder Ring (with 80706 Screw),13	78496	Outer Disc Contact Spring, 14
7661	Adjusting Lever,13	71999	End Play Spring,13	78497	Inner Disc Contact Spring, 14
7824	Oil Wick, Felt,8	72263	Spring Post,4	78509	Gear, 30T,11
7825	Spring (Bell Pull Bar), 6,16	72508	Screw (6-40x3/4),3	78510	Pinion, 7T,11
7835	Ribbon, Black,7	72513	Driving Disc,8	78596	Washer,9
7965	Spring,6,16	72514	Spring,8	78597	Screw (10-32 Shoulder),9
8094	Brush (with spring),13	72515	Nut (5-16 Hex., Left Hand),8	78675	Connecting Block (with magnet cords),2
8157	Selector Lever, Right, 9	72516	Retaining Disc,8	78824	Spring,9
8158	Selector Lever, Left,9	72517	Nut-Keyed,8	78826	Clamp Plate,9
8165	Washer,14	72521	Oil Wick, Felt,8	78905	Washer, Bakelite,15
8222	Wearing Strip,13	72522	Oil Wick, Felt,8	80299	End Play Spring,11
8330	Washer,1,3,10,13,15	72562	Clutch, Driving,8	80307	Outlet,12
8362	Guide Post,5	72563	Washer, Felt,8	80308	Bushing, Fibre,12
8448	Lockout Lever (with rollers),1	72575	Lock Washer,8	80309	Washer, Felt,11
8457	Bell,16	72576	Main Shaft,8	80310	Washer, Felt,11
8458	"S" Pull Bar,16	72579	Washer,8	80311	Washer, Cupped,11
8461	Post,1	72595	Spring,1	80312	Washer,11,13
8462	Adjusting Lever,1	72644	Ball Bearing,8	80313	Washer,11
8465	Bell Bracket,1,2	72739	Guard,1,11,13	80334	Contact Terminal,14
8470	Selector Post,9	72835	Contact Point,14	80335	Clamping Plate,14
8472	Locking Wedge,9	72883	Washer, Felt,8	80336	Insulator,14
8474	Main Bail Plunger,5	72884	Disc,8	80337	Bracket,14
8483	Guard,2	72885	Spring,8	80338	Governor Adjusting Bracket, 14
8484	Post,2	73106	Gear, 35T,13	80340	Brush Spring Plate,14
8493	Pawl,5	73107	Bushing,8	80341	Governor Brush and Speed Adjusting Bracket (Assem.) 14
8497	Bell Hammer,2	73231	Retainer, Steel,13	80342	Screw (6-40x23/64),7,14,15
8499	Shaft (with Ratchet and Detent),15	73232	Washer, Felt,13	80351	Screw (8-36x5/16),12
8500	Selector Mounting Plate 9	73236	Field Frame (with 70771 oiler),13	80352	Center Contact Governor (Assem.),14
8507	Cam Sleeve,8	73237	End Shield (with 70771 oiler),13	80358	Ball Bearing,11
8508	Armature,9	73238	Field Core,13	80444	Screw (6-40x1/4),3,14
8509	Main Bail,5	73239	Field Coil,13	80558	End Shield,11
8511	Locking Lever,9	73242	Insulation (For one Field Coil),13	80559	Clamping Stud,12
8539	Screw (6-40x1/2),7,9,15	73243	Locking Wedge,13	80754	Oiler,11
8543	Screw (6-40x1/4),3	73244	Screw (10-32x7/8),13	80757	Screw (10-32x1/2),3
8884	Terminal Block,2	73392	Bushing,5	81603	Tape Knife,3
8892	Ribbon Feed Shaft (Assem.),15	73419	Shim,1	81638	Collar,3
8896	Shim,3,4	73481	Tape Tension Lever,3	82283	Synchronous Motor, 1/40 H. P. 110V., 60 Cyc., A.C. (G.E. Model 5SH25AB11B), 11,12
34432	Washer,9	73482	Stud,3	82392	Shim,3
36273	Washer,15	73497	Plug,2	82440	Screw (C-40x7/16),8,15
41732	Clamp Plate,14	73595	Clamping Rod,13	82474	Terminal, 2,15
41733	Insulator,14	74059	Screw (6-40x7/32),7,15	82493	Washer,9
70073	Nut (3-48 Hex.),5	74399	Screw (6-40 Pilot),4,9	82702	Screw (6-40x9/32 Flat Head),15
70497	Nut (5/16-32 Hex.),8	74502	Clutch, Driven,8	82741	Name Plate,11,13
70771	Oiler,13	74722	Washer,1,4,9	82839	Rotor (Assem.) (with Bearing and switch),11
70793	Washer,7	74841	Magnet Strap, 2-5/8" long,9	82840	Rotor (Assem.),11
70794	Reversing Lever, Left,7	74986	Screw (6-40x13/32),3	82841	Switch Commutator,11
70803	Screw (6-40 Pivot),9	75226	Wick, Felt,5	82843	Spring,11
70838	Bearing Bracket,8	75229	Spring,7	82845	Washer,11
70871	Spring Bracket,7	75517	Pullbar Guide,6	82848	Brush Holder (with brush), 11
70872	Brush Holder (with Insulator),13	75687	Bearing,1	82850	End Shield,11,12
70873	Brush Holder Cap,13	75750	Washer, Bakelite,15	83054	Condenser, 1MF,15
71045	Nut (6-40 Special),9	76081	Washer,13	83920	Separator Plate-Top,9
71046	Screw (6-40 Special),9	76099	Washer,10	84023	Spring,3
71047	Shim,1,6,11	76117	Terminal Block (Assem.) 15	84047	Stop,13
71073	Washer,9	76167	Screw (4-40x3/16),3	85355	Tape Plate,3
71156	Shim,13	76484	Fan,11	86713	Screw (4-48x5/16),11
71189	Retainer, Copper,13	77911	Brush Cap,15	86868	Bushing,14
71266	Washer,7	77955	Washer,7	86869	Post,14
71445	Link,9	78025	Screw (4-48x3/16),11,13	86919	Lock Plate,3
71635	Bell Bracket (Assem.),2	78028	Screw (6-40x15/16),11,15	86920	Star Wheel,3
71659	Screw (6-40 Shoulder),1	78163	Post,9	86933	Motor Unit (Assem.), Motor Arrangement "H",11
71681	Ribbon Spool,7	78244	Oiler,5	87636	Screw (2-56x5/16),11,13
71686	Shift Rocker Lever,1	78301	Screw (10-32x5/8),2	88879	Brush Holder Support (Assem.),11
71695	Bushing,1	78398	Bushing, Bakelite,14	89087	Core,10
71696	Range Scale,9	78399	Outer Disc Brush Spring (with brush),14		
71697	Clamping Plate,9	78400	Inner Disc Brush Spring (with brush),14		
71829	Range Scale (Assem.),9	78403	Contact Brush,14		
71969	Shift Rocker Arm,1	78437	Insulator,14		
71970	Shift Rocker,1	78438	Bushing,14		
71974	Pinion, 7T,13	78439	Governor Shell,14		
71976	Stop Pawl Plate,9				
71980	Roller,1				

NUMERICAL INDEX

107027	Shield,15	110682	Feed Roll,3	110768	Power Cord (Assem.),2
107156	Plug, Polarized,2	110758	Bracket,15	110769	Cord (with 82474 Terminals),2
107310	Wire Guard,13	110764	Resistor Bracket	110832	Platen,1
107487	Ribbon Spool Cup, Right,7		(Assem.),15	110833	Platen Holder,1
107488	Ribbon Spool Cup, Left,7	110765	Bracket,15	110846	Motor Unit (Assem.),13

CHANGES AND ADDITIONS
TO PARTS BULLETINS

TYPE BAR TAPE PRINTER
(MODEL 14)

1028, ISSUE 2, PAGE 4
1030, ISSUE 2, PAGE 4
1031, ISSUE 3, PAGE 5
1048, ISSUE 2, PAGE 3

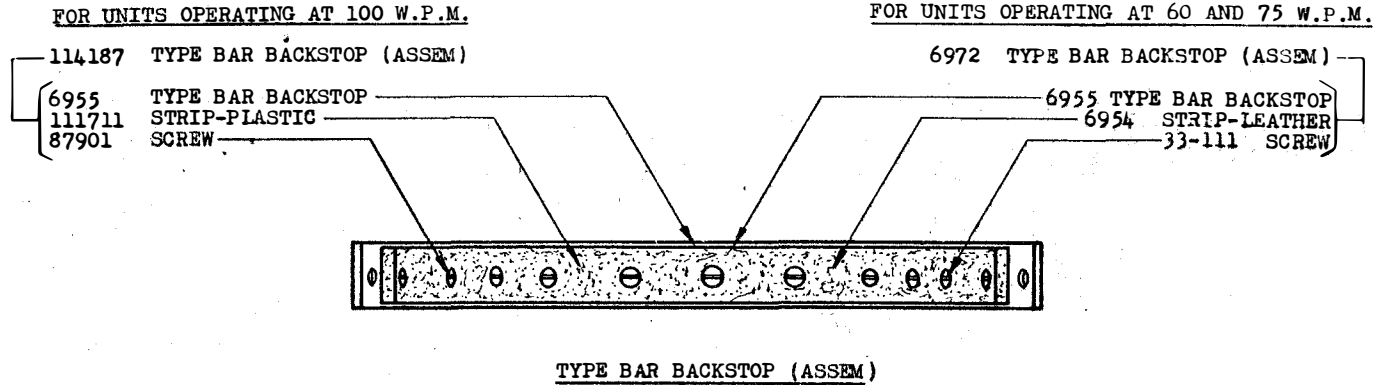
TYPING REPERFORATOR
(MODEL 14)

1082, ISSUE 2, PAGE 17
1088, ISSUE 2, PAGE 9
1100, ISSUE 2, PAGE 7
1117, ISSUE 2, PAGE 6

REPERFORATOR TRANSMITTER
(MODEL 14)

1108, ISSUE 1, PAGE 9
1126, ISSUE 1, PAGE 9

THE 6972 TYPE BAR BACKSTOP ASSEMBLY HAS BEEN REPLACED BY A 114187 TYPE BAR BACKSTOP ASSEMBLY ON 100 WORDS PER MINUTE MACHINES AND DIFFERS AS SHOWN IN THE SKETCH BELOW:



SCREWS ARE NOT INTERCHANGEABLE BETWEEN THE TWO STYLE PARTS.

ALTHOUGH BOTH STYLE PARTS CAN BE USED INTERCHANGEABLY (WITH THE PROPER SCREWS), IT HAS BEEN FOUND THAT THE BALANCE OF LIFE IS IN FAVOR OF LEATHER FOR THE SLOWER SPEEDS AND IN FAVOR OF THE PLASTIC AT THE HIGHER SPEED.

CARBON TETRACHLORIDE, COMPOUNDS OF THIS SOLVENT, OR WATER SHOULD NOT BE USED IN CLEANING UNITS HAVING THE PLASTIC BACKSTOPS AS THEY CAUSE DETERIORATION OF THE PLASTIC MATERIAL.

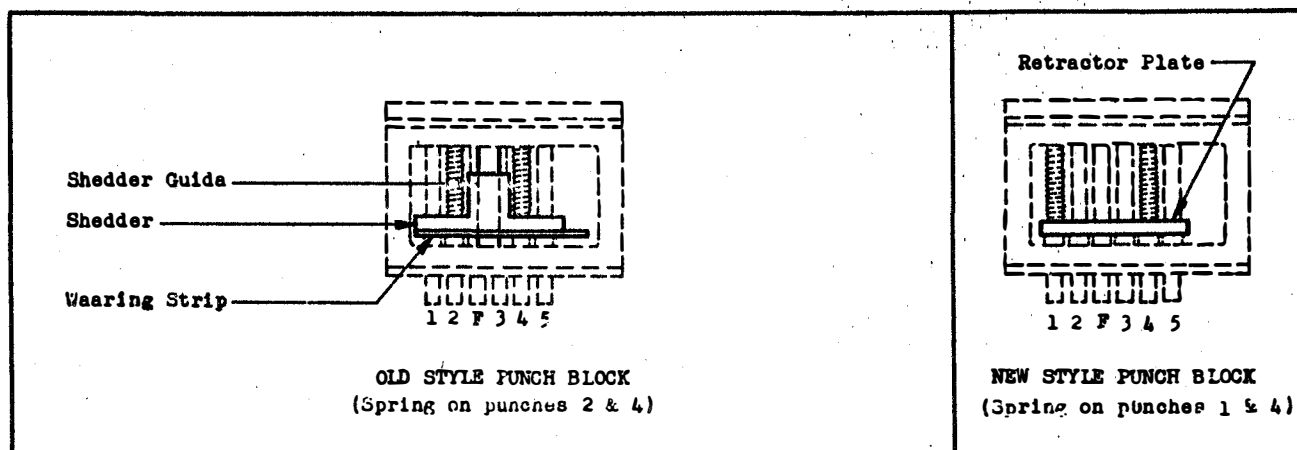
CHANGES AND ADDITIONS
TO PARTS BULLETINS

1001	Issue 1	1067	Issue 2	1090	Issue 2
1012	Issue 2	1080	Issue 1	1093	Issue 1
1038	Issue 2	1082	Issue 2	1100	Issue 2
1052	Issue 1	1088	Issue 2	1117	Issue 2
1064	Issue 2	1089	Issue 1		

The punch block assemblies shown in the above bulletins have been redesigned and assigned new assembly numbers. Old style punch block assemblies are no longer furnished. On orders for old style blocks, new style assemblies which are fully interchangeable with the old style will be furnished.

The sketches below illustrate the difference between the old and new style assemblies, and it should be noted that the shedder and wearing strip are replaced by a retractor plate, and the shedder guides are not used. The shedder and wearing strip are no longer being furnished. When it is desired to replace a shedder or wearing strip, a retractor plate should be ordered instead.

The chart below may be used to determine the new style punch block assembly number which replaces an old style, and which retractor plate must be ordered to replace the old style shedder, and/or wearing strip.



Old Style Assembly Number	Apparatus Used On	Type of Punch Block			Shedder	Wearing Strip	New Style Assembly Number	Retractor Plate
		Number of Code Punch Holes	Type of Feed Hole	Grinding on Punches				
122-384	Perf. & nontyp. Reperf. (5 mag.)	5	Advanced	Cup Ground	122-367	122-368	112640	110902
122-575	Perf. & nontyp. Reperf. (5 mag.)	5	Straight	Cup Ground	122-367	122-574	111019	110901
77987	Perforator	6	Straight	Cup Ground	75121	77986	112642	110903
81510	Perforator	6	Advanced	Cup Ground	75121	75120	112643	110904
81792	Perf. Trans.	5	Straight	Cup Ground	75121	77986	111020	110901
85356	Nontyp. Reperf.	6	Advanced	V Notch	75121	75120	112645	110904
86113	Nontyp. Reperf.	5	Straight	V Notch	75121	77986	111021	110901
89504	Perf. Trans.	5	Straight	Cup Ground	75121	77986	111022	110901
91114	Perf. Trans.	5	Advanced	Cup Ground	75121	75120	112646	110902
94904	Perforator	7	Advanced	Cup Ground	94948	94950	112647	110905
95451	Typ. Reperf.	5	Straight	Cup Ground	122-367	122-574	111023	110901
97472	Nontyp. Reperf.	5	Advanced	V Notch	75121	75120	112648	110902
102790	Typ. Reperf.	5	Straight	Cup Ground	122-367	122-574	111024	110901
104573	Typ. Reperf.	5	Advanced	Cup Ground	122-367	122-368	112649	110902

744 1

CHANGES AND ADDITIONS
TO THE FOLLOWING PARTS BULLETINS

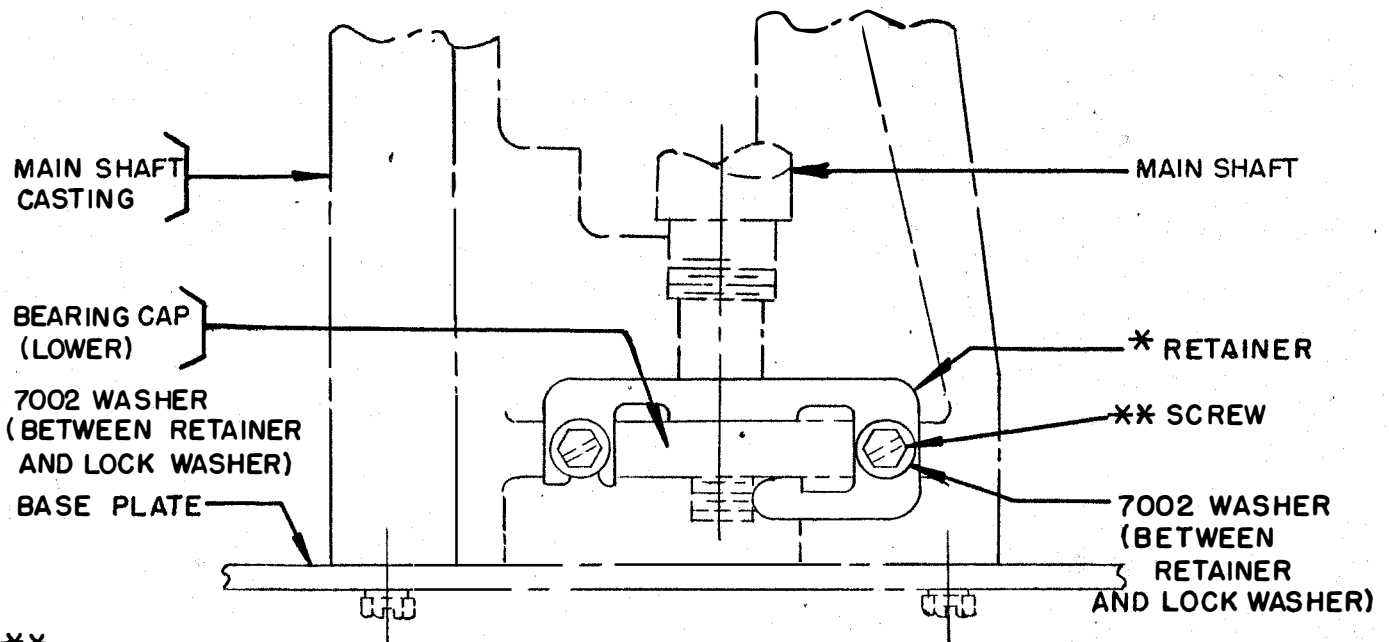
<u>Model 14 Printers</u>	<u>Model 14 Typing Reperforators</u>	<u>Model 14 Non-Typing Selectors</u>	<u>Model 14 Typing Reperforator Transmitter</u>	<u>Multiple Reperforator</u>
1028 Issue 2	1082 Issue 2	1083 Issue 1	1108 Issue 2	1130 Issue 1
1030 Issue 2	1088 Issue 2	1107 Issue 1	1126 Issue 1	
1031 Issue 3	1100 Issue 2	1116 Issue 1		
	1117 Issue 2			

On units operating at high speed or after prolonged use, the main shaft shown in the above bulletins may have a tendency to shift under the bearing caps.

In order to prevent this, two 7002 washers have been added on the upper bearing cap; two 7002 washers and a * retainer have been added on the lower bearing cap and should be mounted as shown below:

- * 120895 retainer (for Bulletin 1130 only)
- * 117387 retainer (for all other bulletins)

** Units with serial numbers lower than 70,000 require 105960 screws (6-40 x 11/16) in place of the 72508 (formerly 6811-6-40 x 5/8) screws (6-40 x 3/4). When the threads of the tapped holes in the 7610 main shaft bracket become damaged a 124613 steel insert may be ordered.



LOWER PORTION OF MAIN SHAFT CASTING

CHANGES AND ADDITIONS
TO PARTS BULLETINS
SHOWN BELOW

In order to facilitate identification of selector cam sleeve assemblies they are stamped with identifying letters. The chart below shows the cam sleeve assembly numbers and identifying letters.

BULLETIN NUMBER	TYPE OF APPARATUS	CAM SLEEVE ASSEMBLY NUMBER	STAMPED WITH LETTERS
1028 Issue 2 1030 Issue 2 1031 Issue 3 1048 Issue 2	Type Bar Tape Printer (Model 14)	*8507	CX
1082 Issue 2 1088 Issue 2 1100 Issue 2 1117 Issue 2	Typing Reperforator (Model 14)	*8507 **91265	CX MX
1108 Issue 1 1126 Issue 1	Reperforator Transmitter (Model 14)	**91265 <small>NEW 122754</small>	MX M
1130 Issue 1	Multiple Reperforator (MRPE)	**111506	QX
1083 Issue 1 1107 Issue 1	Non-Typing Selector (Model 14)	**91265	MX
1072 Issue 2	Regenerator Unit & Panel (RED)	**90010	HX
1121 Issue 1	Multiplex Extensor Unit (AME)	**103891	PX
1064 Issue 2 1080 Issue 1	Reperforator	Model 14 *86158 Model 20 *91020	GX LX
(A) 1037 Issue 4 (B) 1063 Issue 2 1094 Issue 2 1110 Issue 2 (A) 1114 Issue 1	Type Bar Page Printer	Model 15 *8507 **91265 Model 20 *91019	CX MX KX
1073 Issue 1	Type Wheel Page Printer (Model 24)	**90493	JX
1074 Issue 2	Type Wheel Page Printer (Model 26)	**92954	NX

- (A) In Bulletins 1037 and 1114, Page 3, the stamping for the 8507 and 91265 cam sleeve assemblies should read "CX" and "MX" respectively.
 (B) In Bulletin 1063, top of Page 27, the stamping for the 91019 should read "KX".
 * For use with "Pulling Magnet Selectors".
 ** For use with "Holding Magnet Selectors".

Teletype Corporation
Chicago, Illinois, U.S.A.

650EE
Issue 2
February, 1953

CHANGES AND ADDITIONS
TO THE FOLLOWING PARTS BULLETINS

1028	1064	1095	1107	1122	1133
1030	1072	1096	1108	1123	1137
1031	1079	1101	1109	1125	1141
1036	1080	1102	1110	1126	1143
1041	1082	1103	1116	1127	1144
1048	1083	1104	1117	1130	1145
1051	1084	1105	1119	1131	
1063	1087	1106	1120	1132	

Correction Sheet 650EE Issue 1 which covers parts ordering information for Teletype standard motors, center contact governors, governor brushes, and speed adjusting brackets associated with apparatus cataloged in the bulletins listed above, has been revised and reissued as Bulletin 1147B. Where any of the bulletins listed above refer to Correction Sheet 650EE, use Bulletin 1147B instead.

CHANGES IN BULLETINS

- 1028, Issue 2, Model 14 Type Bar Tape Printer, Page 11
- 1030, Issue 2, Model 14 Type Bar Tape Printer, Pages 12, 16, 17, 18
- 1031, Issue 3, Model 14 Type Bar Tape Printer, Pages 40, 41, 42
- 1048, Issue 2, Model 14 Type Bar Tape Printer, Pages 13, 14
- 1082, Issue 2, Model 14 Typing Reperforator, Page 27
- 1088, Issue 2, Model 14 Typing Reperforator, Page 43
- 1100, Issue 2, Model 14 Typing Reperforator, Page 16
- 1117, Issue 2, Model 14 Portable Sending Receiving Typing Reperforator
Transmitter Distributor Set, Page 14

The 6692 pull bar has been replaced by a 74185 pull bar which has an over-all length of approximately 4-5/16 inches which is 1/4 inch shorter than the 6692 pull bar (shortened at the toothed end.) The 74185 pull bar will be furnished on all orders for 6692.

* * * * *

ADDITION TO PARTS BULLETINS
LISTED BELOW

1028 (Issue 2)	1080 (Issue 1)	1114 (Issue 1)
1039 (Issue 2)	1082 (Issue 2)	1116 (Issue 1)
1031 (Issue 3)	1083 (Issue 1)	1117 (Issue 2)
1037 (Issue 4)	1088 (Issue 2)	1121 (Issue 1)
1063 (Issue 2)	1094 (Issue 2)	1126 (Issue 1)
1064 (Issue 2)	1100 (Issue 2)	1130 (Issue 1)
1072 (Issue 2)	1107 (Issue 1)	1141 (Issue 1)
1073 (Issue 1)	1108 (Issue 2)	1142 (Issue 1)
1074 (Issue 2)	1110 (Issue 2)	1143 (Issue 1)

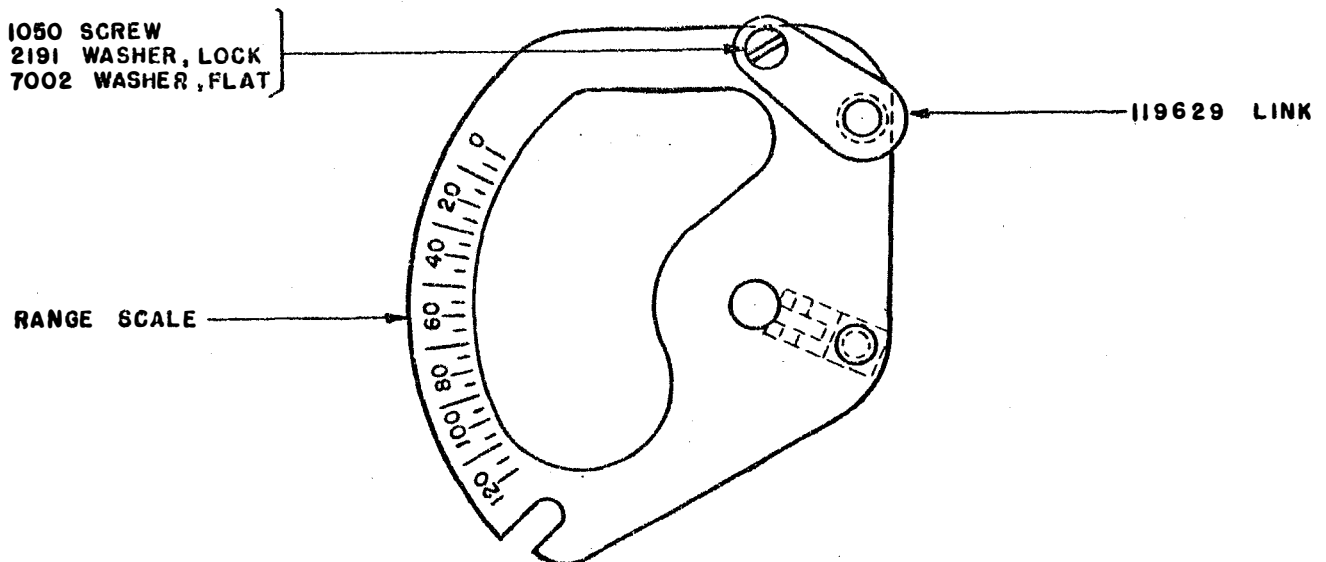
This correction sheet covers parts ordering information for the Adjustable Range Scale assembly. This assembly includes an adjusting link that mounts on the 90775 modified range scale to allow regulation of the engagement between the stop arm on the selection cam sleeve and the stop lever on the range scale assembly.

In the bulletins listed above, and in connection with each range scale assembly shown (71696, 83562, 86154, 90086, 90775, or 90776 depending on the unit), add the following parts:

119629 Link
1050 Screw
2191 Lock Washer
7002 Washer

The part numbers of the other equipment in the assembly are unchanged. The Adjustable Range Scale Assembly replaces the previous Range Scale Assembly, and orders for the old part numbers will be filled accordingly.

The two assemblies are interchangeable on the printer. Due to the modifications in the range scale, however, it is necessary to order a complete assembly to convert existing apparatus.



ADDITIONS TO PARTS BULLETINS

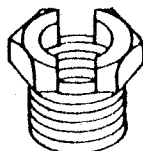
- 1028, Issue 2 - Model 14 Type Bar Tape Printer, Page 5
- 1030, Issue 2 - Model 14 Type Bar Tape Printer, Page 5
- 1031, Issue 3 - Model 14 Type Bar Tape Printer, Page 7
- 1037, Issue 4 - Model 15 Type Bar Page Printer, Page 3
- 1063, Issue 2 - Model 20 Type Bar Page Printer, Page 2
- 1064, Issue 2 - Single Magnet Reperforator (Models 14 and 20 Nontyping), Page 2
- 1072, Issue 2 - Regenerator Unit and Panel, Page 2
- 1074, Issue 2 - Type Wheel Page Printer (Model 26), Page 8
- 1080, Issue 1 - Single Magnst Reperforator (Model 14 Nontyping), Page 2
- 1082, Issue 2 - Typing Reperforator (Model 14), Page 18
- 1088, Issue 2 - Typing Reperforator (Model 14), Page 10
- 1094, Issue 2 - Model 15 Type Bar Page Printer, Page 3
- 1100, Issue 2 - Typing Reperforator (Model 14), Page 8
- 1107, Issue 1 - Nontyping Selector, Page 6
- 1108, Issue 2 - Reperforator Transmitter (Model 14), Page 13
- 1110, Issue 2 - U.S. Army Signal Corps Printers TG-7-A and TG-7-B (Teletype Model 15), Page 3
- 1114, Issue 1 - Model 15 Type Bar Page Printer, Page 3
- 1116, Issue 1 - Nontyping Selector, Page 5
- 1117, Issue 1 - U.S. Army Signal Corps Reperforator Transmitters TG-26-A and TG-27-A (Teletypewriter), Page 7
- 1126, Issue 1 - Reperforator Transmitter Distributor (Model 14), Page 11
- 1130, Issue 1 - Multiple Reperforator, Page 6
- 1141, Issue 1 - Teletype Sequential Control (SECO) System Equipment, Page 13
- 1143, Issue 2 - Sequential Selector, Page 13

1. This correction sheet which supersedes EE-687 covers parts ordering information for the redesigned capstan nut associated with the selector clutch.

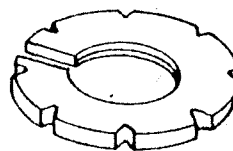
2. To permit adjustment of the selector clutch torque without the necessity of removing the selector cam sleeve, a 119540 keyed nut, a 122974 capstan nut, and a 122838 spacer replaces the 72517 nut and 72515 keyed nut.

3. Shims formerly supplied to adjust the selector clutch torque in the field are still available under the following numbers:

- 96763 Shim (.012" thick)
- 96764 Shim (.016" thick)
- 96765 Shim (.020" thick)



119540 NUT, KEYED



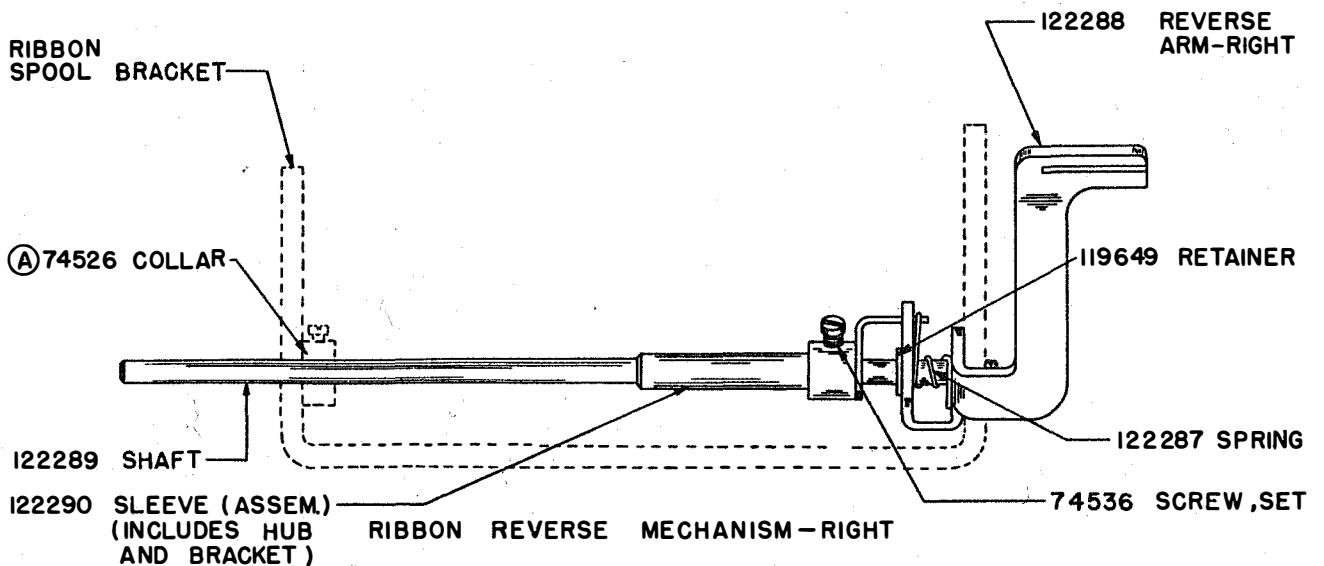
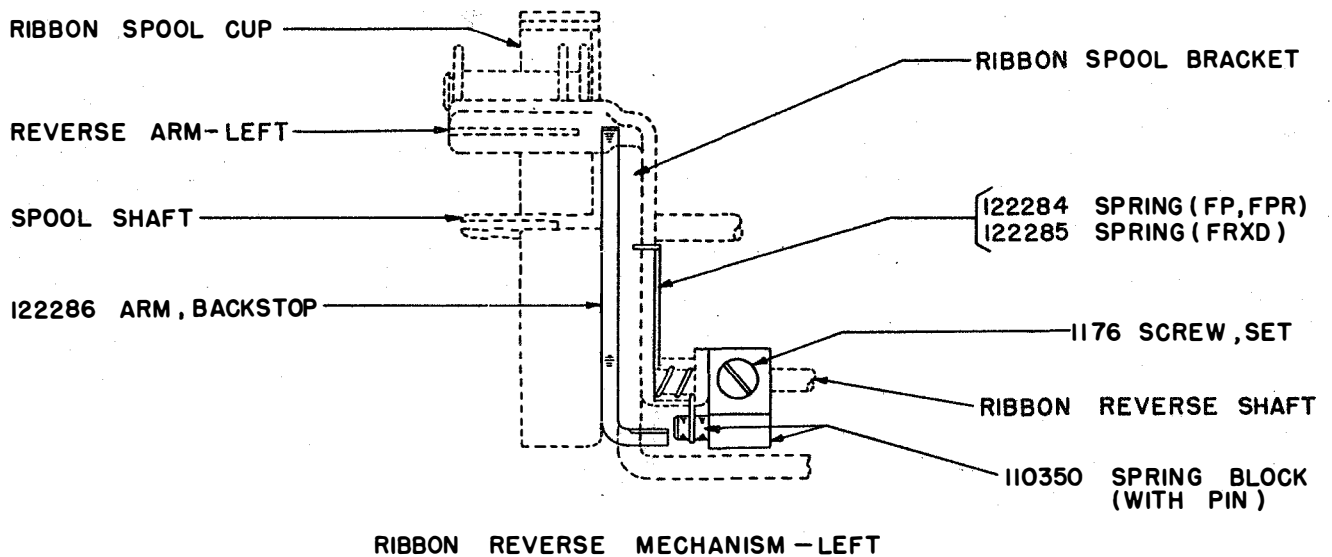
122974 NUT, CAPSTAN



122838 SPACER

CHANGES AND ADDITIONS TO
PARTS (MODEL 14) BULLETINS

TYPE BAR TAPE PRINTER (FP)	TYPING REPERFORATOR (FPR)	REPERFORATOR TRANSMITTER (FRXD)
1028, ISSUE 2, PAGE 4	1082, ISSUE 2, PAGE 16	1108, ISSUE 1, PAGE 9
1030, ISSUE 2, PAGE 4	1088, ISSUE 2, PAGE 8	1126, ISSUE 1, PAGE 8
1031, ISSUE 3, PAGE 5	1100, ISSUE 2, PAGE 7	
	1117, ISSUE 2, PAGE 9,10	



113665 SET OF RIBBON REVERSE ARM YIELD SPRING AND
BACKSTOP PARTS (EXCLUDES PART MARKED (A))

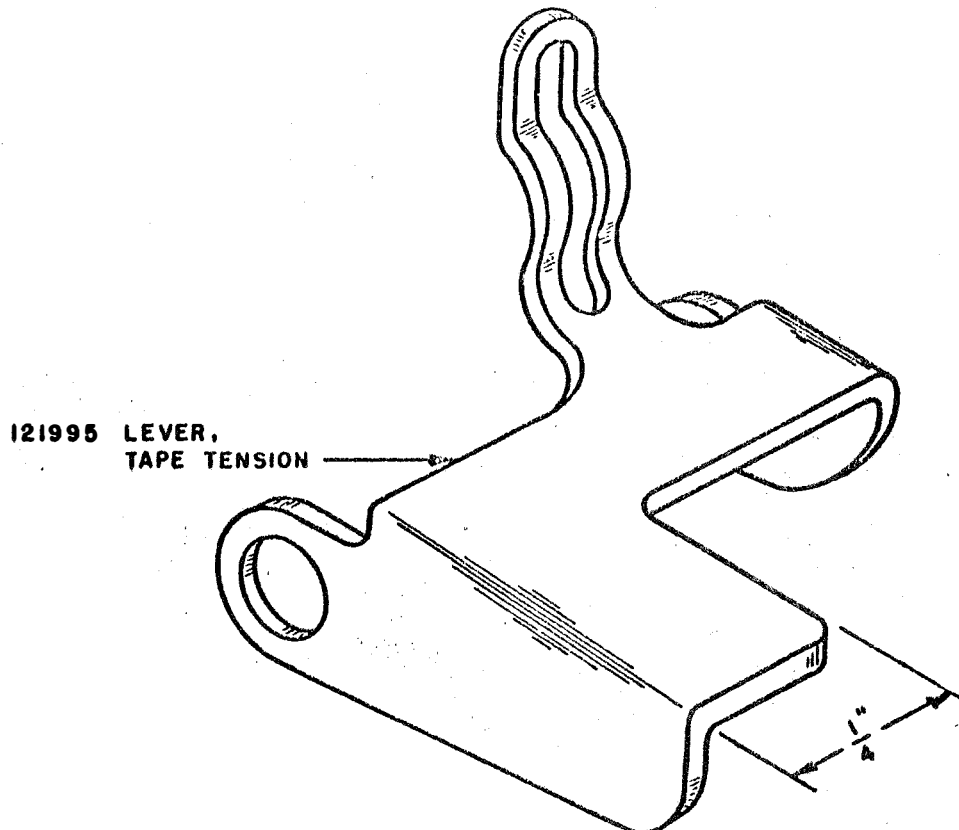
(A) THE 74526 COLLAR (5/16" O.D.) REPLACES THE 7039 COLLAR (3/8" O.D.) ON THE RIBBON REVERSE SHAFTS ON ALL MODEL 14 UNITS.

CHANGE AND ADDITION TO BULLETINS

1012	Issue 2				
1038	Issue 2	1089	Issue 1	1117	Issue 2
1067	Issue 2	1090	Issue 2	1126	Issue 1
1080	Issue 1	1093	Issue 1	1130	Issue 1
1082	Issue 2	1100	Issue 2	1132	Issue 1
1088	Issue 2	1108	Issue 2		

The 73481 tape tension lever has been replaced by a 121995 tape tension lever of improved design, which is provided with a 1/4" wide flat surface to serve as a finger hold as indicated on the sketch below.

New and old style tape tension levers are interchangeable.



CHANGES AND ADDITIONS
TO THE FOLLOWING PARTS BULLETINS

1031, Issue 3, page 6	1088, Issue 2, page 12
1064, Issue 2, page 3	1100, Issue 2, page 9
1080, Issue 1, page 3	1117, Issue 2, page 8
1082, Issue 2, page 10	

This correction sheet covers the standardization of the components used on pulling magnet selector plate assemblies.

The 74986 armature bracket screws have been replaced by 8539 screws.

The 125168 eccentric stop screw has been replaced by an 1160 screw.

Three 2034 washers for the 6942 eccentric screw, have been replaced by three 125011 washers.

The 7586 adjusting screw and its associated 7588 adjusting nut has been replaced by a 74724 screw and 112626 nut.

Bulletin 1088 (Issue 2) page 27. The following information applies to the 14 type bases (FB 49-201-214) equipped with the 114949 tape-out contact assembly.

A 76299 spring replaces the 2623 standard spring on Model 14 bases equipped with the 114949 tape-out contact assembly to insure positive unlatching of the locking pawl and operation of the tape-out contacts.

In addition to the above referenced bulletin see correction sheet 620EE, Issue 1, page 6.

Teletype Corporation
Chicago, Illinois, U.S.A.

789EE
Issue 3
July, 1956

CHANGES AND ADDITIONS
TO THE FOLLOWING PARTS BULLETINS

BULLETIN NO. 1080B, ISSUE 1, PAGE 5
BULLETIN NO. 1064B, ISSUE 2, (BELL) PAGE 5
SINGLE MAGNET REPERFORATOR (RPE)
(MODELS 14 AND 20 NON-TYPING)
BULLETIN NO. 1052B, ISSUE 1, PAGES 2 AND 3
(SIX-UNIT PERFORATOR (MPE))

To provide a means for identifying the beginning or the end of a fully perforated six-unit tape the 81603 tape knife has been replaced by a 123581 tape knife. The 123581 tape knife cuts a triangular notch which produces a small flag on the trailing edge of the tape as it is torn off, and a corresponding notch on the leading edge.

NOTE

Part No. 87603 referred to in Bulletin No. 1064B is in error.
This number should be 81603.

* * *

CHANGES IN TELETYPE PARTS BULLETINS

1028B, Issue 2	1073B, Issue 1	1109B, Issue 1	1131B, Issue 1
1030B, Issue 2	1074B, Issue 2	1110B, Issue 2	1138B, Issue 1
1031B, Issue 3	1080B, Issue 1	1116B, Issue 1	1141B, Issue 1
1041B, Issue 4	1087B, Issue 2	1117B, Issue 2	1142B, Issue 1
1063B, Issue 2	1088B, Issue 2	1121B, Issue 1	1143B, Issue 3
1064B, Issue 2	1100B, Issue 2	1125B, Issue 1	1144B, Issue 1
1068B, Issue 1	1107B, Issue 1	1126B, Issue 1	1150B, Issue 1
1072B, Issue 2	1108B, Issue 2	1130B, Issue 1	1151B, Issue 1

This correction sheet has been revised to include only those bulletins pertinent to the subject matter.

To provide improved performance with respect to maintenance of friction clutches and the selector end of main shafts, the following graphite impregnated felt washers and wicks replace the standard felt washers and wicks as indicated below:

Old Style	Description	Graphite Impregnated
6861	Washer	122741
72883	Washer	122743
74085	Washer	122744
74800	Washer	122745
76084	Washer	*76084
77019	Washer	122747
105045	Wick	122752
113952	Washer	122748

*Retains Old Number.

The 91265 cam sleeve (holding magnet) has been replaced by a 122754 cam sleeve.

The 115232 cam sleeve for the sequential selector has been replaced by a 129674 cam sleeve.

NOTE: The new cam sleeves have a graphite loaded bushing.

New and old style parts are interchangeable.

* * *

CHANGES AND ADDITIONS TO MODEL 14 PARTS BULLETINS

<u>Type Bar Tape Printer (FP)</u>	<u>Typing Reperforator (FPR)</u>	<u>Reperforator Transmitter (FRXD)</u>	<u>Non-Typing Selector (FS)</u>
1028B, Issue 2	1088B, Issue 2	1108B, Issue 2	1083B, Issue 1
1030B, Issue 2	1100B, Issue 2	1126B, Issue 1	1107B, Issue 1
1031B, Issue 3	1117B, Issue 2		

The 6972 typebar backstop assembly has been replaced by a 124535 typebar backstop (with .125" sirvene strip). See Figure 1. The new backstop is applicable at all operating speeds.

A 120553 friction disk assembly has been added to the main shaft assembly and is installed in the hollow of the main shaft gear. One of the 6746 screws and 2191 lock washers fastening the gear to the hub has been replaced by an 8543 screw which allows the button of the friction disk to mount in the hole in which the 8543 screw is used. The 72884 disk has been replaced by a 111686 disk. See Figure 2.

Two 72563 felt washers have been added to all cam sleeve assemblies used with holding type selectors. The 122754 (formerly 91265) cam sleeve assembly illustrated in Figure 3 shows the washers installed between the stop arm and armature lever cam and also between the armature lever cam and the locking lever cam. These washers are not a part of the cam sleeve assemblies and must be ordered separately.

A terminal block is now provided in place of a switch for changing the selector magnet coil connections from series to parallel and vice verse.

On Model 14 Typing Units the 97298 series - parallel switch assembly has been replaced by a 113702 terminal block assembly (with 5000 ohm resistor).

On Model 14 Typing Reperforators the 97298 series - parallel switch assembly has been replaced by a 113702 terminal block assembly (with 5000 ohm resistor) and the 106801 series - parallel switch assembly has been replaced by a 123913 terminal block assembly (with 5000 ohm and 1000 ohm resistors).

On Model 14 Reperforator Transmitters the 97298 series - parallel switch assembly has been replaced by a 123913 terminal block assembly (with 5000 ohm and 1000 ohm resistors).

On Model 14 Non-Typing Selectors the 101825 series - parallel switch assembly has been replaced by a 113702 terminal block assembly (with 5000 ohm resistor).

To standardize on a single type of selector post for all selector units the 8470 post, (.869" long) has been replaced by a 78164 post (.937" long).

For location of the following parts see 513EE, issued in conjunction with Bulletin 1031B.

To provide increased screw thread engagement the 125110 (33-9) screws used to mount the 91085 tape tension lever have been replaced by 125109 screws.

The 125119 (33-278) screw used to mount the 91083 latch has been replaced by a 103699 screw.

New and old style parts are interchangeable.

The following information applies only to the bulletins listed below:

Bulletin 1126B, Page 1

The 110381 cover plate has been replaced by a 117755 cover plate.

Bulletin 1108B, Page 1

Bulletin 1126B, Page 1

The 74026 spacer used with the 112626 (34-4) nut and 2669 lock washer has been replaced by an additional 112626 nut.

The 6746 screw and 2191 lock washer securing the 117755 cover plate have been replaced by a 76667 post.

Add 34432 washer and 112626 nut to the 78301 screw securing the gear guard.
Add 34432 washer to the 6810 screw securing the gear guard.

Bulletin 1108B, Page 7

Bulletin 1126B, Page 17

The 6799 screw which mounts the 102415 shift latch has been replaced by a 124223 screw having a shorter thread length.

Bulletin 1108B, Page 19

Bulletin 1126B, Page 18

The 102221 stripper springs have been replaced by 124661 stripper springs. Tension when measured shall be a minimum of 4 ozs.

New and old style parts are interchangeable.

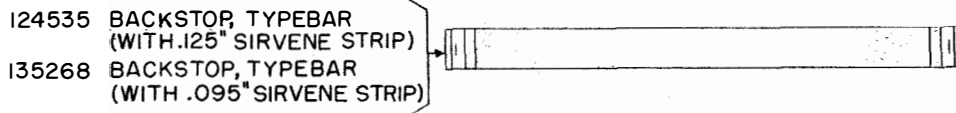


FIGURE 1

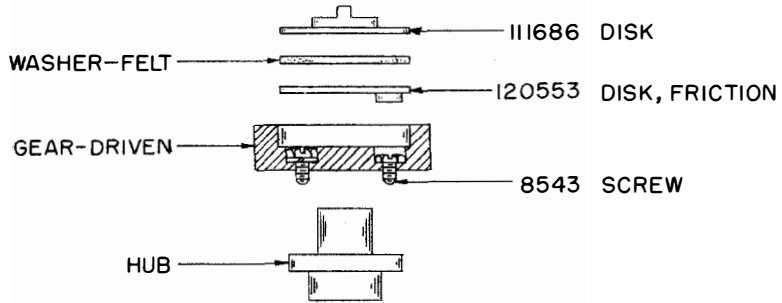


FIGURE 2

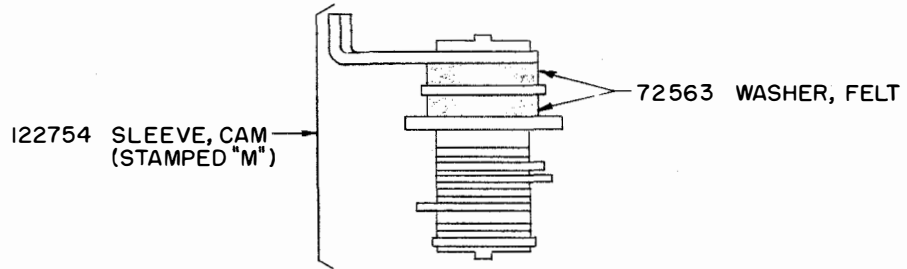
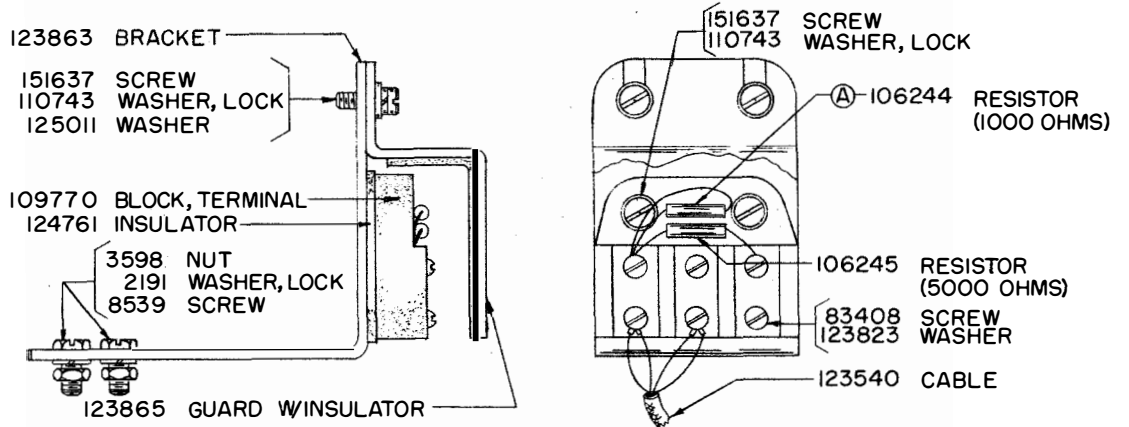


FIGURE 3



113702 BLOCK ASSEMBLY, TERMINAL (SERIES-PARALLEL)
(EXCLUDES PART MARKED Ⓐ)

123913 BLOCK ASSEMBLY, TERMINAL (SERIES-PARALLEL)
(INCLUDES PART MARKED Ⓐ)

FIGURE 4



CHANGES AND ADDITIONS
TO BULLETIN 1100B, ISSUE 2
PARTS-TYPING REPERFORATOR
(FPR5H193 & FPR26GS235)

This correction sheet covers additions and changes in the FPR59H235.

Page 1

The 98873 MOTOR BASE PLATE has been replaced by a 105601 BASE PLATE ASSEM.

Indicate that the 96874 SHIMS are (.002") and add 8896 SHIMS (.004").

The 110832 PLATEN has been replaced by a 111603 PLATEN.

Page 2.

The 102100 spade terminals have been replaced by closed 82474 TERMINALS.

On the FPR59 the 99968 POWER CORD (ASSEM.) has been replaced by a 99351 POWER CORD (ASSEM.) terminals not included. Add FPR59 after FPR5 of the subtitle for the above power cords.

Page 3

The 84023 SPRING has been replaced by a 110974 SPRING.

Page 4

The 2191 LOCK WASHER, on the 74399 SCREW shown at left-center of page, has been replaced by a 107116 LOCK WASHER.

The 3606 NUT on the 95499 UPSTOP has been replaced by a 3598 NUT.

Near the right-center of page, change "USED ON FPR26" to read: USED ON FPR26 AND FPR59.

Page 5

The older MAIN BAIL BRACKET (ASSEM.), as illustrated (FRONT VIEW) in upper part of page has been replaced by that illustrated in Figure 1.

The 6807 SET SCREWS, shown on the 7068 BEVEL GEAR at lower part of page, have been replaced by 73894 SET SCREWS.

Page 6

In the center of the page change "USED ON FPR26" to read: "USED ON FPR26 AND FPR59".

The 6826 SPRING BRACKET (SHORT) on the left side of the page, has been replaced by a 124147 SPRING PLATE (RIGHT).

The 6826 SPRING BRACKET, SHORT, on the right side of the page, has been replaced by a 124146 SPRING PLATE (LEFT).

At the lower-right corner of the page, the 6746 SCREWS have been replaced by 151658 SCREWS and the 7002 WASHERS have been replaced by 8330 WASHERS.

Page 7

The 6972 TYPEBAR BACKSTOP (ASSEM.) has been replaced by the following:

124535 TYPEBAR BACKSTOP (ASSEM.) with
124534 SIRVENE STRIP,
76168 SCREWS and
2191 LOCK WASHERS.

The 6893 BACKSTOP BRACKET has been replaced by a 103341 BACKSTOP BRACKET.

The 91899 TYPEBAR SEGMENT (WITH POSTS) has been replaced by a 89905 TYPE BAR SEGMENT without posts. The 89906 POSTS are still present but listed separately. A 34432 FLAT WASHER has been added to the center 89906 POST.

The 6807 SET SCREWS in the lower illustrations have been replaced by 74536 SET SCREWS.

An 8330 FLAT WASHER has been added to the 6811 SCREW of the 70871 SPRING BRACKET.

A 7654 SHIM (.004") has been added between the 7042 BEVEL GEAR-36T and the 7033 BRACKET.

Page 8

In the illustration at the left-hand side of the page the 6810 SCREW of the 97297 HANDLE has been replaced by a 121575 SCREW and its associated 2669 LOCK WASHER has been replaced by a 98642 LOCK WASHER.

The 98877 OPERATING ARM has been replaced by a 6743 OPERATING ARM.

A 2669 LOCK WASHER has been added to the 1245 SCREW.

A 124512 FLAT WASHER has been added to the 3154 SHAFT between the casting and each side of the 6743 OPERATING ARM.

The 6811 SCREWS have been replaced by 72508 SCREWS and 7002 FLAT WASHERS have been added.

The 6841 MAIN BAIL CAM has been replaced by a 101436 MAIN BAIL CAM.

The 82440 SCREWS have been replaced by a 120896 SCREWS.

The 72575 LOCK WASHER, under the 7408 GEAR, has been replaced by a 72565 LOCK WASHER.

A 7824 FELT WICK has been added at the bottom of the 73107 BUSHING.

Page 9

The 8500 SELECTOR MOUNTING PLATE (WITH POSTS) has been replaced by a 74003 SELECTOR MOUNTING PLATE ASSEM. (WITH POSTS).

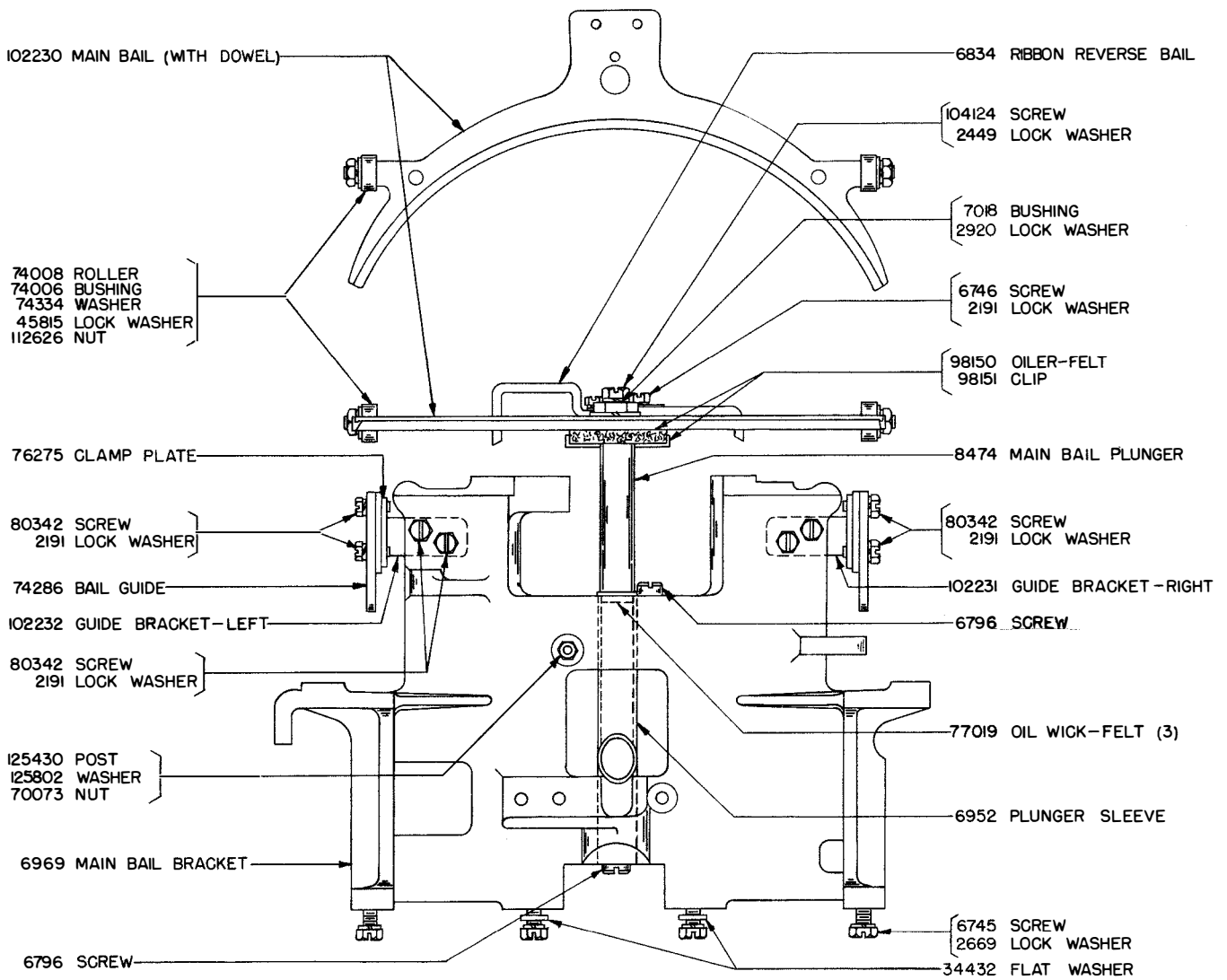
The 7588 NUT has been replaced by a 112626 NUT.

The 7586 SCREW has been replaced by a 74724 SCREW.

Page 11

A 78430 CABLE CLAMP has been added to the motor mounting screw under the cable hole in the motor end shield.

* * *



MAIN BAIL BRACKET ASSEMBLY (FRONT VIEW)

FIGURE I

CHANGES AND ADDITIONS TO PARTS BULLETINS

- 1031, Issue 3, Page 6, Model 14 Type Bar Page Printer
- 1063, Issue 2, Page 2, Model 20 Type Bar Page Printer
- 1064, Issue 2, Page 3, Model 14 and 20 Non-Typing Reperforator
- 1082, Issue 1, Page 3, Model 14 Typing Reperforator
- 1088, Issue 2, Pages 12,14 Model 14 Typing Reperforator
- 1100, Issue 2, Page 9, Model 14 Typing Reperforator
- 1108, Issue 2, Page 14, Model 14 Perforator Transmitter
- 1083, Issue 1, Page 1, Model 14, Non-Typing Selector
- 1107, Issue 1, Page 8, Model 14, Non-Typing Selector
- 1116, Issue 1, Page 6, Model 14, Non-Typing Selector
- 1141, Issue 1, Page 12, Sequential Selector
- 1143, Issue 3, Page 8, Sequential Selector
- 1072, Issue 2, Page 1.

The two 74722 washers used with the 82440 screws for mounting the 6884 armature bracket or the 6811 screws for mounting the 90043 armature bracket, have been replaced by two 124973 washers.

The 74722 washers used with the 6811 screws for mounting the 92273 magnet core, have been replaced by two 124973 washers.

The overall dimensions of the 74722 washer and the 124973 washer are approximately 5/16" and 11/32" respectively.

CHANGES AND ADDITIONS TO
BULLETIN 1082B, ISSUE 2 BULLETIN 1100B, ISSUE 2
BULLETIN 1088B, ISSUE 2 BULLETIN 1117B, ISSUE 2
PARTS - MODEL 14 TYPING REPERFORATOR

The 98873 base plate has been replaced by a 105601 base plate assembly which has been redesigned but retains its original number. The main bail bracket mounting holes and the type bar segment mounting holes of the new style base plate have been increased in diameter to facilitate concentric positioning of these assemblies. Locating links are provided at the two outer mounting holes for the main bail bracket and type bar segment on the under side of the base plate. Screws with notched heads are used for fastening the positioning links after they are properly adjusted. Four holes, 3/8" dia., have been provided to permit access to the screws mounting the pull bar spring plates. Another hole for positioning a locating gauge has also been included. See Figure 1.

To enable concentric positioning of the main bail and code bars a 124479 locating gauge has been provided for use in repair shops. See Figure 2. This gauge, however, may be used only with the new style bases which include the hole for positioning the gauge.

To improve main clutch operation on all units incorporating a 74502 driven clutch and operating at 75 wpm, the 6993 clutch spring has been replaced by a 122059 clutch spring. The 6993 spring is still used on units operating at 60 wpm. For identification the 122059 spring has one full turn at one end painted yellow.

The 91899 type bar segment with posts retains its original number but has been redesigned with a square fulcrum rod slot instead of a radial slot. The radius of the segment shoulder, against which the spring plates rest, has been decreased to obtain closer adjustment for the pull bar-type bar engagement. The 6825 spring bracket has been redesigned to correspond and also retains its original number.

The two 6826 spring brackets have been replaced by one 124146 bracket - left and one 124147 bracket - right.

The 6746 hex head screws and 7002 washers used to secure the 6825, 124146 and 124147 spring brackets have been replaced by 151658 button head screws and 8330 washers to allow greater adjustment.

The 7037 spacer washers have been replaced by 124148 spacer washers. New style spacer washers can only be used with the new style type bar segment.

The type bars have been modified with a contour change at the pallet end. This change affects only the appearance of the type bar, and since old and new style type bars are interchangeable and can be readily identified, old part numbers have been retained.

A modified type bar backstop with a .095" thick sirvene strip has been assigned Part No. 135268 and is for use only with all new style type bars (contour changed at pallet end). The 124535 backstop with a .125" thick

servene strip (illustrated in 833EE) will still be used with all old style or with mixed old and new style type bars since the modified backstop would cause interference between the tails of the old style type bars and adjacent pull bars.

The 113693 set of parts to provide an oil shield for a holding magnet selector is now available. See Figure 3 for parts ordering information.

See Figure 4 for the revised illustration of the 97333 end-of-line-indicator counter unit assembly.

The 102235 main bail bracket has been replaced by the 6969 main bail bracket which has been redesigned but retains its original number. The new style bracket will accommodate both the square post guide and roller guides for the main bail.

New and old style parts are interchangeable, except as noted.

*

*

*

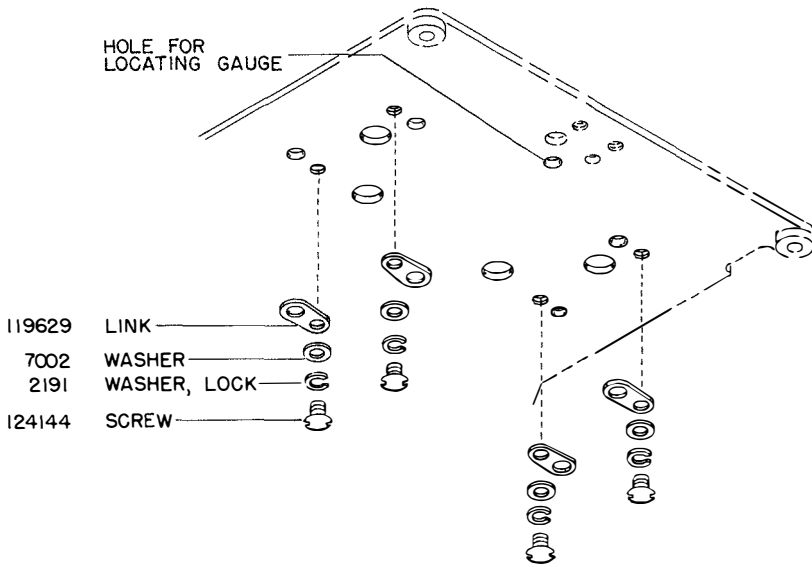
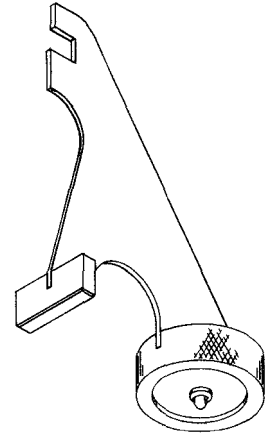
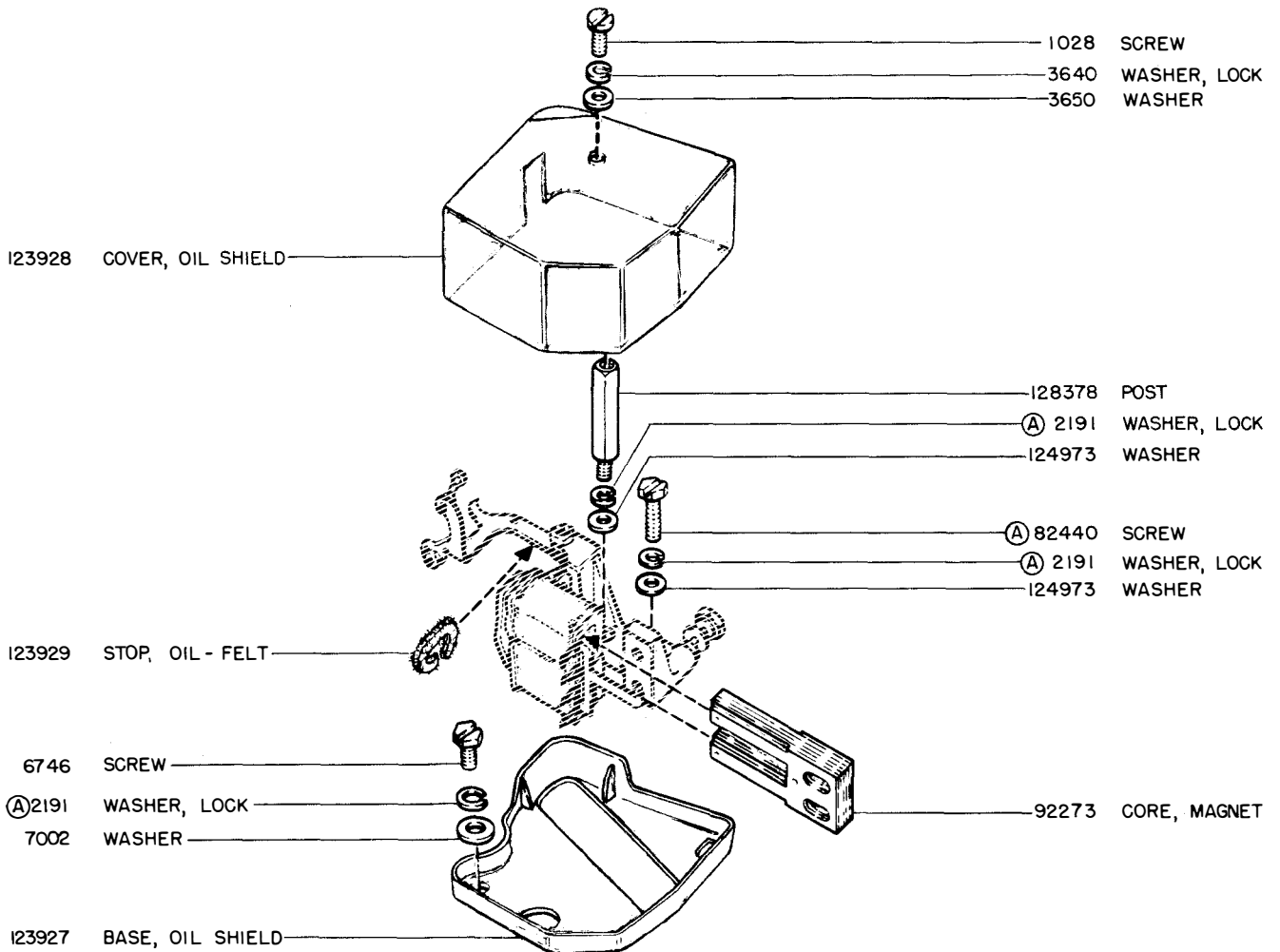


FIGURE 1

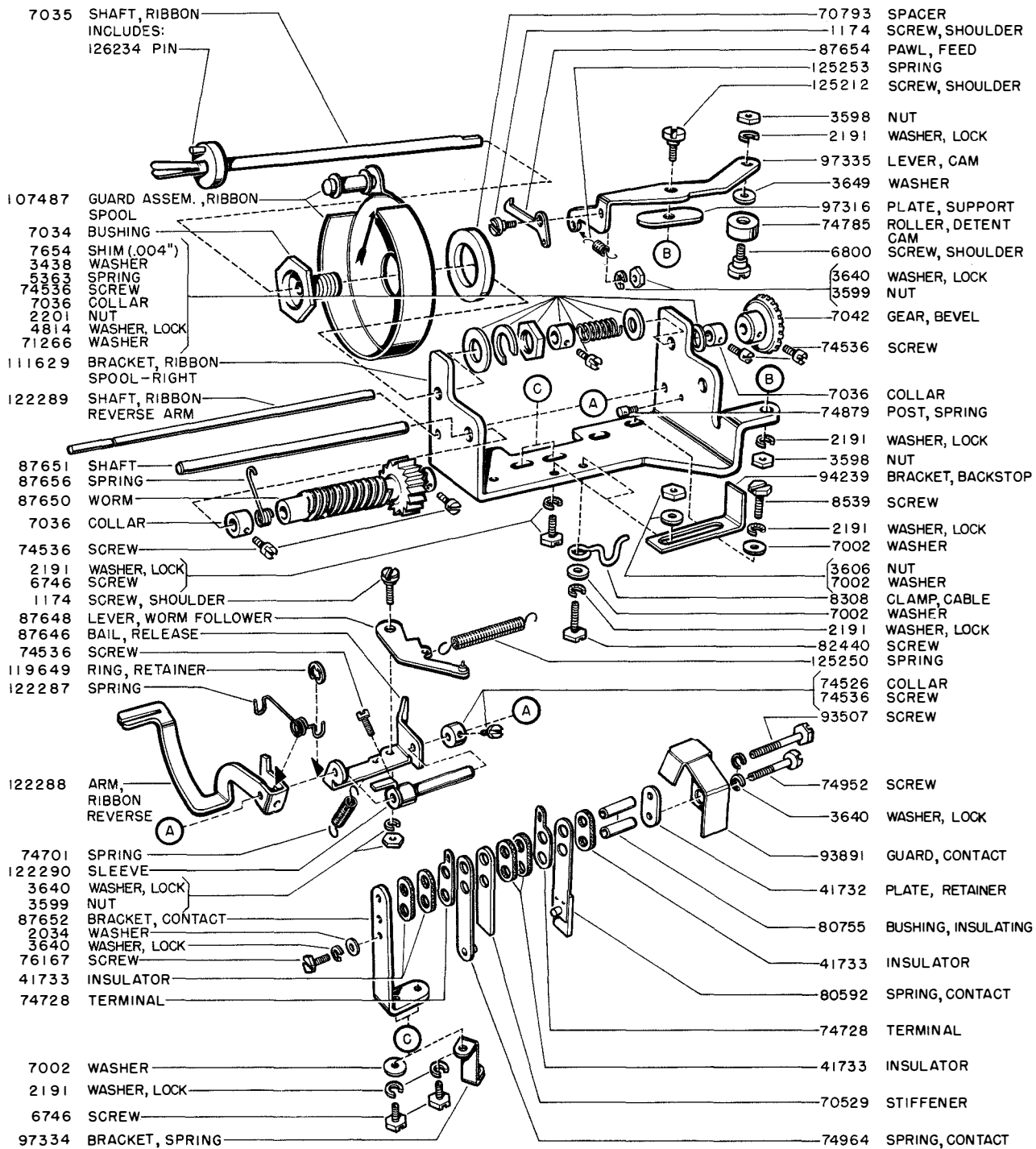


124479 LOCATING GAUGE
FIGURE 2



113693 SET OF PARTS TO PROVIDE AN OIL SHIELD FOR THE HOLDING MAGNET SELECTOR
(EXCLUDES PARTS MARKED (A))

FIGURE 3



97333 COUNTER UNIT ASSEMBLY
FIGURE 4

CHANGES IN TELETYPE
PART AND ASSEMBLY NUMBERS

In order to facilitate the use of automatic business machines in the conduct of its business, Teletype Corporation finds it necessary to eliminate all of its present part and assembly numbers containing dashes and/or letter prefixes. Such numbers have been replaced by others having 3 to 6 digits which may have a one-letter or a two-letter suffix.

The prefixes used with magnet, packing material, raw material such as wire in bulk, Teletype literature and wiring diagram numbers have been changed to suffixes, and in the case of bulletins and instruction manuals a suffix has been added to identify the items without reference to descriptions as shown in the following illustrations:

<u>Old Designation</u>	<u>New Designation</u>	<u>Description</u>
M121	121M	Magnet
PK10718	10718PK	Carton
RM31571	31571RM	Wire
121	121B	Bulletin
EE121	121EE	Correction Sheet
121	121MA	Instruction Manual
WD2186	2186WD	Wiring Diagram
S5037	5037S	Specification
S5333A	5333SA	Specification
S5333B	5333SB	Specification

All Teletype parts bulletins and price lists will eventually be changed to show the new as well as the old numbers for the convenience of Teletype Corporation customers.

When an item is ordered under an old number, the new number will be substituted for the old one and the old number will be shown immediately after the description of the items on all shipping papers and invoices.

Attached are two conversion lists of the active numbers involved; one with the old numbers and descriptions arranged numerically and the other with the new numbers arranged numerically. It is to be noted that some of the new numbers have already been used in Teletype parts catalogs.

Many numbers containing dashes cover parts considered obsolete and are not included in the attached lists. Occasionally one of these parts is reinstated, in which case the part will be shipped under the new number with the dash number shown immediately after the description. It is not intended to add such numbers to the correction sheet lists unless the part is to be commonly used.

OLD TO NEW NUMBER CONVERSION LIST

Old No.	New No.	Description	Old No.	New No.	Description	Old No.	New No.	Description
2-3	125100	Washer	33-88	125140	Screw	33-257	125193	Screw
4-4	125101	Stud	33-89	125141	Screw	33-264	125194	Screw
4-8	74879	Stud	33-98	125142	Screw	33-267	125182	Screw
4-11	125102	Stud	33-101	125143	Screw	33-270	87636	Screw
6-1	125103	Thumb Wheel	33-108	125144	Screw	33-271	125195	Screw
6-2	125104	Sleeve	33-110	110434	Screw	33-272	125004	Screw
23-8	125105	Terminal	33-111	49054	Screw	33-274	125196	Screw
25-21	125106	Stud	33-114	125146	Screw	33-275	126250	Spring
26-19	125107	Dowel	33-121	125147	Screw	33-276	125197	Screw
33-1	1157	Screw	33-123	125148	Screw	33-278	125199	Screw
33-2	125108	Screw	33-130	125149	Screw	33-280	125005	Screw
33-3	1158	Screw	33-132	125001	Screw	33-282	125200	Screw
33-4	1263	Screw	33-135	125150	Screw	33-283	125201	Screw
33-5	1159	Screw	33-141	125151	Screw	33-285	125202	Screw
33-6	1160	Screw	33-143	125152	Screw	33-289	125203	Screw
33-7	1161	Screw	33-151	125153	Screw	33-290	1299	Screw
33-8	125109	Screw	33-153	125154	Screw	33-296	125205	Screw
33-9	125110	Screw	33-156	1162	Screw	33-311	110746	Screw
33-10	1162	Screw	33-157	1174	Screw	33-333	125006	Screw
33-11	1163	Screw	33-158	125155	Screw	33-334	112622	Screw
33-12	125111	Screw	33-162	125156	Screw	33-335	112623	Screw
33-13	5740	Screw	33-163	125157	Screw	33-336	125206	Screw
33-14	1164	Screw	33-167	125158	Screw	33-337	112624	Screw
33-15	125112	Screw	33-168	125159	Screw	33-339	125207	Screw
33-16	1165	Screw	33-169	1175	Screw	33-340	125208	Screw
33-17	1166	Screw	33-170	112621	Screw	33-341	125209	Screw
33-18	125113	Screw	33-175	125160	Screw	33-344	125211	Screw
33-19	1167	Screw	33-176	125161	Screw	33-346	125212	Screw
33-21	112620	Screw	33-179	125002	Screw	33-347	112625	Screw
33-22	125114	Screw	33-180	125162	Screw	33-348	125213	Screw
33-23	125115	Screw	33-185	125163	Screw	33-349	125214	Screw
33-29	125116	Screw	33-193	125164	Screw	33-350	125215	Screw
33-32	125117	Screw	33-194	125165	Screw	33-356	125216	Screw
33-35	1168	Screw	33-195	1176	Screw	33-360	1181	Screw
33-36	125118	Screw	33-196	125166	Screw	33-362	125217	Screw
33-37	1169	Screw	33-197	125167	Screw	34-1	125218	Nut
33-38	125119	Screw	33-198	125168	Screw	34-2	3595	Nut
33-39	1222	Screw	33-202	125169	Screw	34-3	125219	Nut
33-41	125120	Screw	33-206	125003	Screw	34-4	112626	Nut
33-42	125121	Screw	33-207	125170	Screw	34-5	5475	Nut
33-43	125122	Screw	33-208	125171	Screw	34-6	3597	Nut
33-45	125123	Screw	33-209	125172	Screw	34-7	70073	Nut
33-49	1170	Screw	33-210	125173	Screw	34-8	3598	Nut
33-50	125124	Screw	33-211	125174	Screw	34-9	3599	Nut
33-51	125125	Screw	33-212	125175	Screw	34-10	125220	Nut
33-53	1171	Screw	33-213	125176	Screw	34-11	112627	Nut
33-54	1172	Screw	33-217	125177	Screw	34-12	55257	Nut
33-57	125126	Screw	33-224	125178	Screw	34-13	125221	Nut
33-58	125127	Screw	33-225	125179	Screw	34-14	5815	Nut
33-59	125128	Screw	33-227	125180	Screw	34-16	125222	Nut
33-60	125129	Screw	33-228	125181	Screw	34-19	125223	Nut
33-63	125130	Screw	33-234	1177	Screw	34-24	125224	Nut
33-64	1173	Screw	33-235	125183	Screw	34-25	3600	Nut
33-65	125131	Screw	33-236	125184	Screw	34-27	125225	Nut
33-69	1223	Screw	33-237	1178	Screw	34-28	3602	Nut
33-70	125132	Screw	33-238	1179	Screw	34-29	3603	Nut
33-72	125133	Screw	33-240	86850	Screw	34-35	125226	Nut
33-73	125134	Screw	33-241	125185	Screw	34-39	125227	Nut
33-74	125000	Screw	33-244	125186	Screw	34-41	125228	Nut
33-75	125135	Screw	33-245	125187	Bolt	34-48	125229	Nut
33-78	110741	Screw	33-250	125188	Screw	34-50	3604	Nut
33-79	125136	Screw	33-252	125189	Screw	34-51	1036	Nut
33-82	125137	Screw	33-253	125190	Screw	34-53	3605	Nut
33-85	125138	Screw	33-254	125191	Screw	34-54	125230	Nut
33-86	125139	Screw	33-255	125192	Screw	34-55	3606	Nut

Old No.	New No.	Description	Old No.	New No.	Description	Old No.	New No.	Description
34-56	110435	Nut	36-38	125275	Pin	100-79	125327	Screw
34-58	125231	Nut	36-39	125276	Pin	100-80	125328	Bushing
34-59	125009	Nut	36-45	125277	Pin	100-81	125329	Bushing
34-60	125232	Nut	36-51	125278	Pin	100-84	125330	Screw
34-61	125233	Nut	36-56	3614	Pin	100-85	3621	Terminal
34-62	125234	Nut	36-72	125279	Pin	100-88	9574	Screw
34-63	2723	Nut	36-73	125280	Pin	100-92	125331	Bushing
34-64	112628	Nut	36-80	125281	Pin	100-93	125332	Terminal
34-66	125235	Nut	36-85	125282	Pin	100-96	110441	Shim
35-1	112629	Spring	36-103	125283	Pin	100-97	3623	Washer
35-2	112630	Spring	36-104	125284	Pin	100-100	125333	Pole Piece
35-8	112631	Spring	36-105	125285	Rivet	100-101	125334	Pole Piece
35-13	125236	Spring	36-106	125286	Pin	100-106	125335	Spring
35-16	125237	Spring	36-109	125287	Pin	100-108	3624	Washer
35-23	125238	Spring	36-110	125288	Pin	100-109	125336	Spring Assem.
35-24	125239	Spring	36-113	125289	Pin	100-110	125337	Spring
35-26	125240	Spring	36-114	125290	Pin	100-111	125338	Spring
35-27	125241	Spring	36-120	125269	Pin	100-112	125339	Terminal
35-28	125242	Spring	36-124	125291	Pin	100-113	125340	Eyelet
35-33	112632	Spring	36-131	125092	Dowel	100-120	125341	Bushing
35-34	125243	Spring	36-132	125292	Pin	100-145	125343	Strip
35-40	125244	Spring	36-134	125293	Pin	100-148	125344	Terminal
35-42	110436	Spring	36-136	125294	Pin	100-151	125345	Spool
35-43	125245	Spring	36-137	3614	Pin	100-152	125346	Screw
35-47	125246	Spring	36-139	125295	Pin	100-153	125347	Screw
35-48	125247	Spring	36-146	110439	Pin	100-159	125348	Terminal
35-52	4702	Spring	36-147	125296	Pin	100-167	125349	Terminal
35-53	125248	Spring	36-150	125297	Pin	100-173	125350	Contact Point
35-54	112633	Spring	36-151	125298	Pin	100-178	125351	Terminal Block
35-58	3608	Spring	36-152	3615	Pin	100-179	125352	Terminal
35-66	125249	Spring	36-153	110440	Pin	100-187	125353	Terminal
35-68	125250	Spring	36-154	125299	Pin	100-188	125354	Terminal Block
35-69	125251	Spring	36-164	125300	Pin	100-217	125355	Relay Spool
35-70	110437	Spring	36-165	125301	Pin	100-218	125356	Terminal
35-71	125252	Spring	36-170	125302	Pin	100-219	125357	Terminal
35-72	125253	Spring	36-172	125303	Pin	100-220	125358	Terminal
35-78	125254	Spring	36-173	3616	Pin	100-227	125359	Washer
35-80	125255	Spring	36-174	125304	Rivet	100-228	125360	Washer
35-84	125256	Spring	43-10	125306	Stop	100-234	125361	Washer
35-85	125257	Spring	43-12	71047	Washer	100-235	125362	Washer
35-86	4703	Spring	46-3	125307	Washer	100-246	125363	Screw
35-87	4708	Spring	47-2	125308	Buffer Assem.	100-253	125364	Spring
35-88	110438	Spring	47-4	125309	Buffer	100-254	125365	Spring
35-89	112634	Spring	47-5	125310	Screw	100-255	125366	Bushing
35-99	125258	Spring	52-4	125099	Washer	100-256	125367	Washer
35-101	125259	Spring	52-5	125311	Buffer	100-257	125368	Washer
35-104	125260	Spring	54-3	125312	Washer	103-27	125011	Washer
35-111	125261	Spring	61-7	3618	Insulator	103-75	125369	Resistor
35-116	125262	Spring	61-9	125313	Washer	103-77	125370	Resistor
35-123	125263	Spring	61-10	125314	Screw	103-102	125371	Screw
35-124	125264	Spring	61-12	125315	Washer	103-151	125372	Pinion
35-125	125265	Spring	61-21	125316	Screw	112-7	125373	Screw
35-126	3610	Spring	61-24	125010	Washer	112-8	125374	Screw
35-129	3611	Spring	61-25	125317	Insulator	112-64	125375	Screw
35-131	125266	Spring	80-1	125318	Tube	120-20	125376	Washer
35-132	125267	Spring	80-2	125319	Terminal	122-5	125379	Post
35-133	125268	Spring	80-3	125320	Washer	122-11	125380	Chute
35-134	4705	Spring	80-4	125321	Pole Piece	122-12	125381	Stud
35-137	112635	Spring	80-5	125322	Magnet Core	122-18	125382	Cable
35-140	112636	Spring	100-70	125323	Magnet Core	S-122-19	125383	Bracket
36-19	125270	Pin	100-71	125324	Magnet Core	S-122-20	125384	Bracket
36-23	125271	Pin	100-72	125325	Terminal	S-122-21	125385	Bracket
36-24	125272	Pin	100-73	125326	Washer	S-122-22	125386	Bracket
36-28	125273	Pin	100-74	5816	Washer	S-122-23	125387	Bracket
36-35	125274	Pin	100-75	3620	Washer	S-122-24	125388	Bracket

Old No.	New No.	Description	Old No.	New No.	Description	Old No.	New No.	Description
122-25	125389	Bracket	122-133	125450	Post	122-381	125505	Lever
122-26	125390	Washer	S-122-134	125451	Bell Crank	122-382	125506	Bail
122-27	125391	Shaft	122-135	125452	Washer	122-383	125507	Key Lever
122-28	125392	Stop	S-122-136	125453	Bracket	122-384	112640	Die Block
122-29	125393	Pin	122-137	125454	Gear Assem.	122-386	125508	Bail Assem.
122-35	125394	Plate	122-139	125455	Pin	122-387	125509	Cover
122-36	125395	Pin	122-140	125456	Stud	122-388	125510	Hinge
S-122-37	125396	Guide	122-143	125457	Connector	122-389	125511	Pawl Assem.
S-122-38	125397	Bar	122-146	125458	Bearing	122-390	125512	Contact Assem.
S-122-39	3625	Shaft	122-147	125459	Bushing	122-392	125509BC	Cover
S-122-40	125398	Bracket	W-122-152	125798	Key Assem.	122-396	125514	Hammer Assem.
122-41	125399	Roller	122-192	125461	Cup	122-397	125515	Hinge
122-42	125400	Gear	122-193	125462	Washer	122-399	125516	"Blank" Comb
122-43	125401	Gear	122-194	125463	Disk	122-400	125517	Comb
122-46	125402	Post	122-195	125464	Disk	122-401	125518	Comb
122-48	125012	Socket	122-196	125465	Bezel	122-402	125519	Comb
122-49	125403	Fitting	S-122-234	3627	Bar	122-403	125520	Comb
122-50	125404	Lamp	122-241	125466	Roller	122-404	125521	Comb
122-51	125405	Bell Crank	122-242	125467	Lever Assem.	122-405	125522	Comb
122-52	125406	Bell Crank	122-244	125468	Post	122-406	125523	Comb
122-53	125407	Bell Crank	122-245	125469	Pawl	122-407	125524	Comb
122-54	125408	Bell Crank	122-246	125470	Post	122-408	125525	Comb
122-55	125409	Bell Crank	122-247	125471	Disk Assem.	122-409	125526	Comb
122-56	125410	Bushings	122-249	125472	Stud	122-410	125527	Comb
122-57	125411	Bushings	122-250	125473	Spool Assem.	122-411	125528	Comb
122-58	125412	Stud	122-251	125474	Tube	122-412	125529	Comb
122-60	125413	Ratchet	122-252	125475	Terminal End	122-413	125530	Comb
122-61	125414	Post	122-253	125476	Magnet Spool	122-414	125531	Comb
122-62	125415	Pin	122-254	125477	Core	122-415	125532	Comb
122-63	125416	Post	122-257	125478	Plunger	122-416	125533	Comb
122-65	125417	Stud	122-259	125479	Disk	122-417	125534	Comb
122-67	125418	Post	122-260	125480	Hub	122-418	125535	Comb
122-68	3626	Foot	122-275	125481	Bracket	122-419	125536	Comb
S-122-69	125419	Stop	122-276	125013	Plate	122-420	125537	Comb
122-80	125420	Guide	122-290	125482	Terminal End	122-421	125538	Comb
122-84	125421	Pin	122-337	125014	Washer	122-422	125539	Comb
122-86	125422	Pin	122-345	119959BC	Container Assem.	122-423	125540	Comb
122-88	125423	Solenoid Assem.	122-346	125484	Plate	122-424	125541	Comb
122-89	125424	Bracket	122-347	125485	Guard	122-425	125542	Comb
122-94	125425	Terminal Board	122-348	126247	Bracket	122-426	125543	Comb
122-95	125426	Insulator	122-349	125486	Pivot	122-427	125544	Comb
122-97	125427	Bushing	122-350	125487	Tape Reel	122-428	125545	Comb
122-100	125428	Plate	122-352	80520BC	Cover	122-429	125546	Comb
122-101	125429	Head	122-354	126248	Shelf	122-430	125547	Comb
122-102	125430	Post	122-355	126249	Bracket	122-431	125548	Paper Keytop
122-106	125431G	Bracket Assem.	122-356	80523BC	Cover	122-432	125549	Paper Keytop
122-106G	125432	Bracket Assem.	122-357	125488	Spacer	122-433	125550	Paper Keytop
122-107	125433	Bracket	122-358	125489	Bracket	122-434	125551	Paper Keytop
122-108	125434	Bushing	122-359	125490	Ratchet	122-435	125552	Paper Keytop
122-111	125435	Screw	122-363	125491	Pin	122-436	125553	Stud
122-112	125436	Strip	122-364	125492	Bracket	122-437	125554	Spring
122-113	9575	Screw	122-365	125493	Punch Pin	122-438	125555	Head
122-115	125437	Contact Point	122-366	125494	Punch Pin	122-439	125556	Spring Eye
122-116	125438	Lever Assem.	122-367)	110902	Plate	122-444	119960BC	Plate
122-117	125439	Lever	122-368)			122-445	119957	Guard Assem.
122-118	125440	Terminal	122-369	125495	Guide Plate	122-447	125558	Spring
122-119	125441	Contact Assem.	122-370	125496	Guide Plate	122-450	125559	Keys
122-120	125442	Spring	122-371	125497	Die Plate	122-451	125560	Lever Assem.
122-121	125443	Contact	122-373	125498	Punch Hammer	122-452	125561	Lever Assem.
122-124	125444	Spring	122-374	125499	Punch Bar	122-453	125562	Cable Assem.
122-126	125445	Insulator	122-375	125500	Punch Bar	122-454	125563	Cable
122-127	125446	Stud	122-376	125501	Punch Bar	122-457	125564	Loop Blank
122-128	125447	Bracket Assem.	122-377	125502	Punch Bar	122-459	125565	Paper Keytop
122-129	125448	Bracket	122-378	125503	Punch Bar	122-460	125566	Paper Keytop
S-122-130	125449	Lever Assem.	122-380	125504	Lever	122-461	125567	Paper Keytop

Old No.	New No.	Description	Old No.	New No.	Description	Old No.	New No.	Description
122-462	125568	Paper Keytop	122-567	125631	Hammer Assem.	122-708	125693	Paper Keytop
122-463	125569	Paper Keytop	122-570	120499BC	Base	122-709	125694	Paper Keytop
122-464	125570	Paper Keytop	122-571	125633	Guide Plate	122-710	125605	Paper Keytop
122-465	125571	Paper Keytop	122-572	125634	Guide Plate	123-7	3628	Bushing
122-466	125572	Paper Keytop	122-573	125635	Die Plate	123-8	71444	Bushing
122-467	125573	Paper Keytop	122-574)	110901	Plate	123-10	3629	Collar
122-468	125574	Paper Keytop	122-367)			123-36	3630	Bushing
122-469	125575	Paper Keytop	122-575	111019	Block	123-37	125696	Post
122-470	125576	Paper Keytop	122-576	125636	Plate Assem.	123-55	125697	Contact Pin
122-471	125577	Paper Keytop	122-577	125637	Ratchet Assem.	123-123	125698	Roller
122-472	125578	Paper Keytop	122-580	125638	Paper Keytop	123-135	125699	Pin
122-473	125579	Paper Keytop	122-581	125639	Paper Keytop	123-154	125700	Hub
122-474	125580	Paper Keytop	122-582	125640	Paper Keytop	123-158	125701	Hub
122-475	125581	Paper Keytop	122-583	125641	Bushing	123-159	125702	Dowel
122-476	125582	Paper Keytop	122-586	125642	Bracket Assem.	123-163	3632	Terminal
122-477	125583	Paper Keytop	122-589	125643	Washer	123-164	3633	Bushing
122-478	125584	Paper Keytop	122-590	125644	Handle	123-165	3634	Bushing
122-479	125585	Paper Keytop	122-592	125645	Guide	123-166	3635	Washer
122-480	125586	Paper Keytop	122-593	125646	Plate	123-167	3636	Washer
122-481	125587	Paper Keytop	122-594	125647	Plate	123-194	3637	Ball Bearing
122-482	125588	Paper Keytop	122-596	125648	Key Lever	123-244	125015	Washer
122-483	125589	Paper Keytop	122-597	125649	Key Lever	123-308	125703	Terminal
122-484	125590	Paper Keytop	122-598	125650	Key Lever	123-314	125704	Rivet
122-485	125591	Paper Keytop	122-599	125651	Key Lever	123-342	125705	Oil Cup
122-487	125592	Paper Keytop	122-600	125652	Key Lever	123-343	125706	Wick
122-490	119957BC	Guard	122-601	125653	Key Lever	123-357	125707	Terminal
122-498	125510	Hinge	122-602	125654	Key Lever	123-362	125708	Washer
122-511	125594	Guide Assem.	122-603	125655	Key Lever	123-364	125709	Hinge-Butt
122-526	125595	Roller	122-604	125656	Key Lever	123-412	125710	Ring - Blank
122-528	125596	Key Lever Assem.	122-605	125657	Key Lever	123-447	125711	Disk
122-529	125597	Key Lever Assem.	122-606	125658	Key Lever	125-9	3638	Condenser
122-530	125598	Key Lever Assem.	122-607	125659	Key Lever	125-23	125712	Clamp
122-531	125599	Key Lever Assem.	122-608	125660	Key Lever	125-55	125713	Card Holder
122-532	125600	Key Lever Assem.	122-609	125661	Key Lever	125-161	125714	Resistor
122-533	125601	Key Lever Assem.	122-610	125662	Key Lever	125-169	125715	Fuse
122-534	125602	Key Lever Assem.	122-611	125663	Key Lever	125-176	125716	Switch Box
122-535	125603	Key Lever Assem.	122-612	125664	Key Lever	125-184	125717	Fuse Box
122-536	125604	Key Lever Assem.	122-613	125665	Key Lever	125-194	125718	Resistor
122-537	125605	Key Lever Assem.	122-614	125666	Key Lever	125-197	125097	Nipple
122-538	125606	Key Lever Assem.	122-615	125667	Key Lever	125-198	125098	Nut
122-539	125607	Key Lever Assem.	122-616	125668	Key Lever	125-208	125719	Nipple
122-540	125608	Key Lever Assem.	122-617	125669	Key Lever	125-209	125720	Nut
122-541	125609	Key Lever Assem.	122-618	125670	Key Lever	125-211	125721	Clamp
122-542	125610	Key Lever Assem.	122-619	125671	Key Lever	125-217	126253	Receptacle
122-543	125611	Key Lever Assem.	122-620	125672	Key Lever	125-221	125091	Receptacle
122-544	125612	Key Lever Assem.	122-621	125673	Key Lever	125-237	125723	Fuse
122-545	125613	Key Lever Assem.	122-622	125674	Key Lever	125-238	125724	Fuse
122-546	125614	Key Lever Assem.	122-623	125675	Key Lever	125-239	125725	Fuse
122-547	125615	Key Lever Assem.	122-624	125676	Key Lever	125-240	125483	Key
122-548	125616	Key Lever Assem.	122-625	125677	Key Lever	125-242	125726	Resistor
122-549	125617	Key Lever Assem.	122-626	125678	Key Lever	125-269	125727	Handle
122-550	125618	Key Lever Assem.	122-627	125679	Key Lever	125-270	125728	Hinge
122-551	125619	Key Lever Assem.	122-628	125680	Key Lever	125-276	125729	Switch Box
122-552	125620	Key Lever Assem.	122-629	125681	Key Lever	126-11	125730	Bushing
122-553	125621	Key Lever Assem.	122-630	125682	Comb	F-126-24	125377	Pinion
122-554	125622	Key Lever Assem.	122-697	125683	Bushing	126-64	125731	Cam
122-555	125623	Key Lever Assem.	122-698	125684	Lever Assem.	126-92	125732	Washer
122-556	125624	Key Lever Assem.	122-699	125685	Stud	126-93	125733	Washer
122-557	125198	Key Lever Assem.	122-700	125686	Lever Assem.	126-95	125734	Armature
122-558	125625	Key Lever Assem.	122-702	125687	Bushing	126-107	125735	Screw
122-559	125626	Key Lever Assem.	122-703	125688	Bracket Assem.	126-108	125736	Brush Holder
122-562	84695	Guard	122-704	125689	Paper Keytop	126-111	125737	Coil
122-563	125628	Guard Clip	122-705	125690	Paper Keytop	126-114	125738	Washer
122-564	125629	Guard Clip	122-706	125691	Paper Keytop	126-118	125739	Bushing
122-565	125630	Guard	122-707	125692	Paper Keytop	126-123	125016	Grommet

Old No.	New No.	Description	Old No.	New No.	Description	Old No.	New No.	Description
126-126	125740	Brush	200-1132	125792	Insulator	300-177	125854	Terminal
126-127	125741	Spring	200-1134	125793	Pin	300-178	125855	Terminal
138-1	125742	Tuning Fork	200-1135	9576	Contact Spring	300-179	125856	Terminal Block
138-2	125743	Tuning Fork	200-1136	125794	Spring Blank	300-180	125857	Terminal Block
138-3	125744	Tuning Fork	200-1137	9577	Spring	300-181	125858	Feed Pawl
138-4	125745	Tuning Fork	200-1138	125795	Spring Blank	300-200	125859	Bracket
138-5	114756	Tuning Fork	200-1139	3647	Insulator	300-201	125860	End Bracket
138-6	125747	Tuning Fork	200-1175	125796	Spring	300-301	5556	Top Plate
138-7	125748	Tuning Fork	200-1176	125797	Spring	300-302	125861	Feed Wheel
138-11	125749	Tuning Fork	200-1177	126251	Insulator	300-303	125862	Bearing
138-20	125751	Tuning Fork	200-1178	125799	Spring	300-304	125863	Bracket
138-22	110442	Screw Driver	200-1179	125800	Stiff	300-306	125864	Plate
138-23	125752	Wrench	200-1345	125801	Valve	300-307	125865	Plate
138-24	125753	Wrench	200-1348	125802	Washer	300-308	125866	Strip
138-25	125754	Wrench	200-1703	125803	Hub	300-312	125867	Bracket
138-26	125755	Wrench	200-2002	125804	Strip	300-314	125868	Detent Assem.
138-27	125756	Wrench	200-2210	125805	Post	300-315	125869	Detent Lever
138-28	125757	Wrench	200-2212	3649	Washer	300-316	125870	Detent Roller
138-30	125758	File	200-2217	125806	Post	300-319	125871	Bracket
138-32	125759	Wrench	200-2800	125807	Spindle	300-320	125872	Shaft
138-33	125760	Wrench	200-2802	125808	Pivot	300-322	125873	Latch
138-34	125761	Wrench	300-3	125809	Cable	300-400	125874	End Bracket
138-35	125762	Wrench	300-103	125810	Armature	300-501	125875	Base
138-36	125763	Wrench	300-104	125812	Armature	300-502	125876	Switch
138-38	125764	Screw Driver Blade	300-105	125813	Bearing	300-503	125877	Strip
138-43	126242	Gauge	300-106	125814	Guide	300-504	125878	Terminal
138-44	126243	Gauge	300-107	125815	Contact Assem.	300-505	4706	Washer
138-49	126244	Gauge	300-108	125816	Mounting Bar	300-506	4707	Washer
138-52	125765	Wrench	300-109	125817	Mounting Bar	300-507	125879	Base
138-55	110443	Scale	300-110	125818	Insulator	300-508	125880	Armature
138-58	110444	Scale	300-111	125819	Plate	300-509	125881	Washer
138-67	125766	Handle	300-113	125820	Disk	300-510	125882	Terminal
138-68	125767	Shank	300-114	125821	Lever Blank	300-511	125883	Armature
138-69	125768	Shank	300-115	125822	Lever #1	300-512	125884	Spring
138-74	125769	Shank	300-116	125823	Lever #2	300-513	125885	Armature Handle
138-100	88993	Burnisher	300-117	125824	Lever #3	300-515	125886	Terminal
138-119	125771	Handle	300-118	125825	Lever #4	300-516	125887	Base
138-120	125772	Shank	300-119	125826	Lever #5	300-517	125888	Decalcomania
138-122	125773	Handle	300-120	125827	Lever	300-518	125889	Base
138-123	125774	Shank	300-121	125828	Shaft	300-519	125890	Armature
138-125	126245	Gauge	300-128	125829	Lever	300-601	125891	Bracket
138-126	126246	Gauge	300-130	125830	Armature	300-602	125892	Shaft
138-127	125775	Wrench	300-131	125831	Cont. Spring	300-603	125893	Shaft
138-128	125776	Wrench	300-132	125832	Cont. Spring	300-604	125894	Lever
138-129	125777	Wrench	300-137	125833	Lever Guide	300-605	125895	Bracket
138-130	125778	Shank	300-138	125834	Spool	300-606	125896	Shaft
138-133	125779	Wrench	300-139	125935	Tube	300-607	125897	Bracket
138-134	125780	Handle	300-140	125836	Magnet Core	300-608	125898	Pawl
138-135	125781	Shank	300-142	125837	Magnet Yoke	300-609	125899	Post
138-136	125782	Wrench Grip	300-143	125838	Flunger	300-700	125900	Panel
138-137	110445	Tool	300-144	125839	Bracket	300-701	125557	Panel
138-139	125783	Stone	300-145	125840	Rod	300-702	125901	Stud
138-141	114758	Tuning Fork	300-146	125841	Lever	400-2	125902	Rod
200-20	3639	Washer	300-147	125842	Button	400-3	125903	Brush
200-133	125785	Spring	300-150	125843	Plate	400-6	125904	Lamp
200-137	125786	Spring	300-152	125844	Adj. Lever	400-102	125905	Strip
200-139	125787	Button	300-153	125845	Yoke	400-203	125906	Gear
200-148	125788	Post	300-154	125846	Cont. Point	400-206	125907	Washer
200-153	3640	Washer	300-155	125847	Plate	400-207	125908	Pinion
200-214	125789	Shim	300-170	125848	Cont. Lever	400-209	125909	Shaft
200-704	3642	Washer	300-171	125849	Cont. Lever	400-210	125910	Shaft
200-705	125790	Bushing	300-172	125850	Cont. Lever	400-211	125911	Wheel
200-1028	125791	Washer	300-173	125851	Cont. Lever	400-212	125912	Segment Ring
200-1031	6033	Washer	300-174	125852	Cont. Lever	400-215	125913	Collector Ring
200-1032	3646	Washer	300-175	125853	Cont. Lever	400-218	125914	Terminal

Old No.	New No.	Description	Old No.	New No.	Description	Old No.	New No.	Description
400-221	125915	Disk	700-68	73202	Washer	55083-12	126107	"T" Bar
400-222	125916	Range Scale	700-71	3650	Washer	55083-13	126108	"T" Bar
400-302	125917	Bushing	700-75	125750	Screw	55083-14	126109	"T" Bar
400-402	125918	Bushing	700-76	125770	Terminal	55083-15	126110	"T" Bar
400-509	125342	Sleeve	1000-203	125923	Washer	55083-16	126111	"T" Bar
400-510	125210	Shaft	1000-252	110446	Nut	55083-17	126112	"T" Bar
400-513	125919	Washer	W-1098	70793	Spacer	55083-18	126113	"T" Bar
400-519	125920	Sleeve	W-1238	126234	Pin	55083-20	126114	"T" Bar
400-801	125921	Gear	W-1241	126235	Collar	55083-21	126115	"T" Bar
400-1002	125922	Decalcomania	W-1958	71681	Spool	55084-A2	126156	Bar
400-1404	125924	Lever	W-2328	72669	Clip	55084-A4	126157	Bar
500-4	125925	Switch	W-2657	126236	Spring	55084-A6	126158	Bar
500-6	125926	Connector	W-6095	84990	Screw	55084-A8	126159	Bar
500-7	125927	Locknut	W-6104	126237	Nut	55084-A10	126160	Bar
500-19	125928	Washer	W-9277	126238	Handle	55084-A12	126161	Bar
500-80	125929	Resistor	W-9278	126239	Journal	55084-A14	126162	Bar
500-96	125930	Washer	W-9279-A	126240	Crank	55084-A16	126163	Bar
500-99	125931	Switch	W-9337-F	89883	Nut	55084-A18	126164	Bar
500-104	125932	Spring	W-9470	86341	Screw	55084-A20	126165	Bar
500-105	125933	Plate	W-9542	74878	Paper Drag	55084-B1	126166	Bar
500-112	125934	Spring	W-10074	110743	Washer	55084-B3	126167	Bar
500-205	125935	Spring	W-10076	3646	Washer	55084-B5	126168	Bar
500-308	125936	Pin	W-10077	45815	Washer	55084-B7	126169	Bar
500-309	125937	Pin	W-10080	3640	Washer	55084-B9	126170	Bar
500-310	125938	Chain	W-10082	4814	Washer	55084-B11	126171	Bar
500-311	125939	Pin "S" Hook	W-10083	3639	Washer	55084-B13	126172	Bar
500-403	125940	Block	W-10086	126241	Washer	55084-B15	126173	Bar
500-404	125941	Socket	W-10088	70071	Washer	55084-B17	126174	Bar
500-406	125942	Fuse	W-10090	70072	Washer	74274-1	126232	Button
500-600	125943	Box	55083-1	126096	"T" Bar			
500-703	125944	Foot	55083-2	126097	"T" Bar			
500-1008	125945	Switch	55083-3	126098	"T" Bar			
W-666	126233	Pivot	55083-4	126099	"T" Bar			
W-667	74877	Spring	55083-5	126100	"T" Bar			
W-669	117313	Spindle	55083-6	126101	"T" Bar			
700-51	125946	Screw	55083-7	126102	"T" Bar			
700-55	125947	Screw	55083-8	126103	"T" Bar			
700-59	125948	Screw	55083-9	126104	"T" Bar			
700-60	125949	Screw	55083-10	126105	"T" Bar			
700-65	125722	Screw	55083-11	126106	"T" Bar			

NEW TO OLD NUMBER CONVERSION LIST

<u>New No.</u>	<u>Old No.</u>	<u>New No.</u>	<u>Old No.</u>	<u>New No.</u>	<u>Old No.</u>	<u>New No.</u>	<u>Old No.</u>	<u>New No.</u>	<u>Old No.</u>
1036	34-51	3642	200-704	112622	33-334	125127	33-58	125198	122-557
1157	33-1	3646	200-1032	112623	33-335	125128	33-59	125199	33-278
1158	33-3	3646	W-10076	112624	33-337	125129	33-60	125200	33-282
1159	33-5	3647	200-1139	112625	33-347	125130	33-63	125201	33-283
1160	33-6	3649	200-2212	112626	34-4	125131	33-65	125202	33-285
1161	33-7	3650	700-71	112627	34-11	125132	33-70	125203	33-289
1162	33-10	4702	35-52	112628	34-64	125133	33-72	125205	33-296
	33-156	4703	35-86	112629	35-1	125134	33-73	125206	33-336
1163	33-11	4705	35-134	112630	35-2	125135	33-75	125207	33-339
1164	33-14	4706	300-505	112631	35-8	125136	33-79	125208	33-340
1165	33-16	4707	300-506	112632	35-33	125137	33-82	125209	33-341
1166	33-17	4708	35-87	112633	35-54	125138	33-85	125210	400-510
1167	33-19	4814	W-10082	112634	35-89	125139	33-86	125211	33-344
1168	33-35	5475	34-5	112635	35-137	125140	33-88	125212	33-346
1169	33-37	5556	300-301	112636	35-140	125141	33-89	125213	33-348
1170	33-49	5740	33-13	112640	122-384	125142	33-98	125214	33-349
1171	33-53	5815	34-14	114756	138-5	125143	33-101	125215	33-350
1172	33-54	5816	100-74	114758	138-141	125144	33-108	125216	33-356
1173	33-64	6033	200-1031	117313	W-669	125146	33-114	125217	33-362
1174	33-157	9574	100-88	119957BC	122-490	125147	33-121	125218	34-1
1175	33-169	9575	122-113	119959BC	122-345	125148	33-123	125219	34-3
1176	33-195	9576	200-1135	119960BC	122-444	125149	33-130	125220	34-10
1177	33-234	9577	200-1137	120499BC	122-570	125150	33-135	125221	34-13
1178	33-237	45815	W-10077	125000	33-74	125151	33-141	125222	34-16
1179	33-238	49054	33-111	125001	33-132	125152	33-143	125223	34-19
1181	33-360	55257	34-12	125002	33-179	125153	33-151	125224	34-24
1222	33-39	70071	W-10088	125003	33-206	125154	33-153	125225	34-27
1223	33-69	70072	W-10090	125004	33-272	125155	33-158	125226	34-35
1263	33-4	70073	34-7	125005	33-280	125156	33-162	125227	34-39
1299	33-290	70793	W-1098	125006	33-333	125157	33-163	125228	34-41
2723	34-63	71047	43-12	125009	34-59	125158	33-167	125229	34-48
3595	34-2	71444	123-8	125010	61-24	125159	33-168	125230	34-54
3597	34-6	71681	W-1958	125011	103-27	125160	33-175	125231	34-58
3598	34-8	72669	W-2328	125012	122-48	125161	33-176	125232	34-60
3599	34-9	73202	700-68	125013	122-276	125162	33-180	125233	34-61
3600	34-25	74877	W-667	125014	122-337	125163	33-185	125234	34-62
3602	34-28	74878	W-9542	125015	123-244	125164	33-193	125235	34-66
3603	34-29	74879	4-8	125016	126-123	125165	33-194	125236	35-13
3604	34-50	80520BC	122-352	125091	125-221	125166	33-196	125237	35-16
3605	34-53	80523BC	122-356	125092	36-131	125167	33-197	125238	35-23
3606	34-55	84695	122-562	125097	125-197	125168	33-198	125239	35-24
3608	35-58	84990	W-6095	125098	125-198	125169	33-202	125240	35-26
3610	35-126	86341	W-9470	125099	52-4	125170	33-207	125241	35-27
3611	35-129	86850	33-240	125100	2-3	125171	33-208	125242	35-28
3614	36-56	87636	33-270	125101	4-4	125172	33-209	125243	35-34
3614	36-137	88993	138-100	125102	4-11	125173	33-210	125244	35-40
3615	36-152	89883	W-9337-F	125103	6-1	125174	33-211	125245	35-43
3616	36-173	110434	33-110	125104	6-2	125175	33-212	125246	35-47
3618	61-7	110435	34-56	125105	23-8	125176	33-213	125247	35-48
3620	100-75	110436	35-42	125106	25-21	125177	33-217	125248	35-53
3621	100-85	110437	35-70	125107	26-19	125178	33-224	125249	35-66
3623	100-97	110438	35-88	125108	33-2	125179	33-225	125250	35-68
3624	100-108	110439	36-146	125109	33-8	125180	33-227	125251	35-69
3625	S-122-39	110440	36-153	125110	33-9	125181	33-228	125252	35-71
3626	122-68	110441	100-96	125111	33-12	125182	33-267	125253	35-72
3627	S-122-234	110442	138-22	125112	33-15	125183	33-235	125254	35-78
3628	123-7	110443	138-55	125113	33-18	125184	33-236	125255	35-80
3629	123-10	110444	138-58	125114	33-22	125185	33-241	125256	35-84
3630	123-36	110445	138-137	125115	33-23	125186	33-244	125257	35-85
3632	123-163	110446	1000-252	125116	33-29	125187	33-245	125258	35-99
3633	123-164	110741	33-78	125117	33-32	125188	33-250	125259	35-101
3634	123-165	110742	33-311	125118	33-36	125189	33-252	125260	35-104
3635	123-166	110743	W-10074	125119	33-38	125190	33-253	125261	35-111
3636	123-167	110901	(122-574	125120	33-41	125191	33-254	125262	35-116
3637	123-194		(122-367	125121	33-42	125192	33-255	125263	35-123
3638	125-9	110902	(122-367	125122	33-43	125193	33-257	125264	35-124
3639	200-20		(122-368	125123	33-45	125194	33-264	125265	35-125
3639	W-10083	111019	122-575	125124	33-50	125195	33-271	125266	35-131
3640	200-153	112620	33-21	125125	33-51	125196	33-274	125267	35-132
3640	W-10080	112621	33-170	125126	33-57	125197	33-276	125268	35-133

New No.	Old No.	New No.	Old No.	New No.	Old No.	New No.	Old No.	New No.	Old No.
125269	36-120	125343	100-145	125417	122-65	125491	122-363	125564	122-457
125270	36-19	125344	100-148	125418	122-67	125492	122-364	125565	122-459
125271	36-23	125345	100-151	125419	S-122-69	125493	122-365	125566	122-460
125272	36-24	125346	100-152	125420	122-80	125494	122-366	125567	122-461
125273	36-28	125347	100-153	125421	122-84	125495	122-369	125568	122-462
125274	36-35	125348	100-159	125422	122-86	125496	122-370	125569	122-463
125275	36-38	125349	100-167	125423	122-88	125497	122-371	125570	122-464
125276	36-39	125350	100-173	125424	122-89	125498	122-373	125571	122-465
125277	36-45	125351	100-178	125425	122-94	125499	122-374	125572	122-466
125278	36-51	125352	100-179	125426	122-95	125500	122-375	125573	122-467
125279	36-72	125353	100-187	125427	122-97	125501	122-376	125574	122-468
125280	36-73	125354	100-188	125428	122-100	125502	122-377	125575	122-469
125281	36-80	125355	100-217	125429	122-101	125503	122-378	125576	122-470
125282	36-85	125356	100-218	125430	122-102	125504	122-380	125577	122-471
125283	36-103	125357	100-219	125431	122-106	125505	122-381	125578	122-472
125284	36-104	125358	100-220	125432	122-106G	125506	122-382	125579	122-473
125285	36-105	125359	100-227	125433	122-107	125507	122-383	125580	122-474
125286	36-106	125360	100-228	125434	122-108	125508	122-386	125581	122-475
125287	36-109	125361	100-234	125435	122-111	125509	122-387	125582	122-476
125288	36-110	125362	100-235	125436	122-112	125509BC	122-392	125583	122-477
125289	36-113	125363	100-246	125437	122-115	125510	122-388	125584	122-478
125290	36-114	125364	100-253	125438	122-116	125511	122-389	125585	122-479
125291	36-124	125365	100-254	125439	122-117	125512	122-390	125586	122-480
125292	36-132	125366	100-255	125440	122-118	125514	122-396	125587	122-481
125293	36-134	125367	100-256	125441	122-119	125515	122-397	125588	122-482
125294	36-136	125368	100-257	125442	122-120	125516	122-399	125589	122-483
125295	36-139	125369	103-75	125443	122-121	125517	122-400	125590	122-484
125296	36-147	125370	103-77	125444	122-124	125518	122-401	125591	122-485
125297	36-150	125371	103-102	125445	122-126	125519	122-402	125592	122-487
125298	36-151	125372	103-151	125446	122-127	125520	122-403	125594	122-511
125299	36-154	125373	112-7	125447	122-128	125521	122-404	125595	122-526
125300	36-164	125374	112-8	125448	122-129	125522	122-405	125596	122-528
125301	36-165	125375	112-64	125449	S-122-130	125523	122-406	125597	122-529
125302	36-170	125376	120-20	125450	122-133	125524	122-407	125598	122-530
125303	36-172	125377	F-126-24	125451	S-122-134	125525	122-408	125599	122-531
125304	36-174	125379	122-5	125452	122-135	125526	122-409	125600	122-532
125306	43-10	125380	122-11	125453	S-122-136	125527	122-410	125601	122-533
125307	46-3	125381	122-12	125454	122-137	125528	122-411	125602	122-534
125308	47-2	125382	122-18	125455	122-139	125529	122-412	125603	122-535
125309	47-4	125383	S-122-19	125456	122-140	125530	122-413	125604	122-536
125310	47-5	125384	S-122-20	125457	122-143	125531	122-414	125605	122-537
125311	52-5	125385	S-122-21	125458	122-146	125532	122-415	125606	122-538
125312	54-3	125386	S-122-22	125459	122-147	125533	122-416	125607	122-539
125313	61-9	125387	S-122-23	125461	122-192	125534	122-417	125608	122-540
125314	61-10	125388	S-122-24	125462	122-193	125535	122-418	125609	122-541
125315	61-12	125389	122-25	125463	122-194	125536	122-419	125610	122-542
125316	61-21	125390	122-26	125464	122-195	125537	122-420	125611	122-543
125317	61-25	125391	122-27	125465	122-196	125538	122-421	125612	122-544
125318	80-1	125392	122-28	125466	122-241	125539	122-422	125613	122-545
125319	80-2	125393	122-29	125467	122-242	125540	122-423	125614	122-546
125320	80-3	125394	122-35	125468	122-244	125541	122-424	125615	122-547
125321	80-4	125395	122-36	125469	122-245	125542	122-425	125616	122-548
125322	80-5	125396	S-122-37	125470	122-246	125543	122-426	125617	122-549
125323	100-70	125397	S-122-38	125471	122-247	125544	122-427	125618	122-550
125324	100-71	125398	S-122-40	125472	122-249	125545	122-428	125619	122-551
125325	100-72	125399	122-41	125473	122-250	125546	122-429	125620	122-552
125326	100-73	125400	122-42	125474	122-251	125547	122-430	125621	122-553
125327	100-79	125401	122-43	125475	122-252	125548	122-431	125622	122-554
125328	100-80	125402	122-46	125476	122-253	125549	122-432	125623	122-555
125329	100-81	125403	122-49	125477	122-254	125550	122-433	125624	122-556
125330	100-84	125404	122-50	125478	122-257	125551	122-434	125625	122-558
125331	100-92	125405	122-51	125479	122-259	125552	122-435	125626	122-559
125332	100-93	125406	122-52	125480	122-260	125553	122-436	125628	122-563
125333	100-100	125407	122-53	125481	122-275	125554	122-437	125629	122-564
125334	100-101	125408	122-54	125482	122-290	125555	122-438	125630	122-565
125335	100-106	125409	122-55	125483	125-240	125556	122-439	125631	122-567
125336	100-109	125410	122-56	125484	122-346	125557	300-701	125633	122-571
125337	100-110	125411	122-57	125485	122-347	125558	122-447	125634	122-572
125338	100-111	125412	122-58	125486	122-349	125559	122-450	125635	122-573
125339	100-112	125413	122-60	125487	122-350	125560	122-451	125636	122-576
125340	100-113	125414	122-61	125488	122-357	125561	122-452	125637	122-577
125341	100-120	125415	122-62	125489	122-358	125562	122-453	125638	122-580
125342	400-509	125416	122-63	125490	122-359	125563	122-454	125639	122-581

New No.	Old No.	New No.	Old No.	New No.	Old No.	New No.	Old No.	New No.	Old No.
125640	122-582	125714	125-161	125789	200-214	125863	300-304	125936	500-308
125641	122-583	125715	125-169	125790	200-705	125864	300-306	125937	500-309
125642	122-586	125716	125-176	125791	200-1028	125865	300-307	125938	500-310
125643	122-589	125717	125-184	125792	200-1132	125866	300-308	125939	500-311
125644	122-590	125718	125-194	125793	200-1134	125867	300-312	125940	500-403
125645	122-592	125719	125-208	125794	200-1136	125868	300-314	125941	500-404
125646	122-593	125720	125-209	125795	200-1138	125869	300-315	125942	500-406
125647	122-594	125721	125-211	125796	200-1175	125870	300-316	125943	500-600
125648	122-596	125722	700-65	125797	200-1176	125871	300-319	125944	500-703
125649	122-597	125723	125-237	125798	W-122-152	125872	300-320	125945	500-1008
125650	122-598	125724	125-238	125799	200-1178	125873	300-322	125946	700-51
125651	122-599	125725	125-239	125800	200-1179	125874	300-400	125947	700-55
125652	122-600	125726	125-242	125801	200-1345	125875	300-501	125948	700-59
125653	122-601	125727	125-269	125802	200-1348	125876	300-502	125949	700-60
125654	122-602	125728	125-270	125803	200-1703	125877	300-503	126096	55083-1
125655	122-603	125729	125-276	125804	200-2002	125878	300-504	126097	55083-2
125656	122-604	125730	126-11	125805	200-2210	125879	300-507	126098	55083-3
125657	122-605	125731	126-64	125806	200-2217	125880	300-508	126099	55083-4
125658	122-606	125732	126-92	125807	200-2800	125881	300-509	126100	55083-5
125659	122-607	125733	126-93	125808	200-2802	125882	300-510	126101	55083-6
125660	122-608	125734	126-95	125809	300-3	125883	300-511	126102	55083-7
125661	122-609	125735	126-107	125810	300-103	125884	300-512	126103	55083-8
125662	122-610	125736	126-108	125812	300-104	125885	300-513	126104	55083-9
125663	122-611	125737	126-111	125813	300-105	125886	300-515	126105	55083-10
125664	122-612	125738	126-114	125814	300-106	125887	300-516	126106	55083-11
125665	122-613	125739	126-118	125815	300-107	125888	300-517	126107	55083-12
125666	122-614	125740	126-126	125816	300-108	125889	300-518	126108	55083-13
125667	122-615	125741	126-127	125817	300-109	125890	300-519	126109	55083-14
125668	122-616	125742	138-1	125818	300-110	125891	300-601	126110	55083-15
125669	122-617	125743	138-2	125819	300-111	125892	300-602	126111	55083-16
125670	122-618	125744	138-3	125820	300-113	125893	300-603	126112	55083-17
125671	122-619	125745	138-4	125821	300-114	125894	300-604	126113	55083-18
125672	122-620	125747	138-6	125822	300-115	125895	300-605	126114	55083-20
125673	122-621	125748	138-7	125823	300-116	125896	300-606	126115	55083-21
125674	122-622	125749	138-9	125824	300-117	125897	300-607	126156	55084-A2
125675	122-623	125750	700-75	125825	300-118	125898	300-608	126157	55084-A4
125676	122-624	125751	138-20	125826	300-119	125899	300-609	126158	55084-A6
125677	122-625	125752	138-23	125827	300-120	125900	300-700	126159	55084-A8
125678	122-626	125753	138-24	125828	300-121	125901	300-702	126160	55084-A10
125679	122-627	125754	138-25	125829	300-128	125902	400-2	126161	55084-A12
125680	122-628	125755	138-26	125830	300-130	125903	400-3	126162	55084-A14
125681	122-629	125756	138-27	125831	300-131	125904	400-6	126163	55084-A16
125682	122-630	125757	138-28	125832	300-132	125905	400-102	126164	55084-A18
125683	122-697	125758	138-30	125833	300-137	125906	400-203	126165	55084-A20
125684	122-698	125759	138-32	125834	300-138	125907	400-206	126166	55084-B1
125685	122-699	125760	138-33	125835	300-139	125908	400-207	126167	55084-B3
125686	122-700	125761	138-34	125836	300-140	125909	400-209	126168	55084-B5
125687	122-702	125762	138-35	125837	300-142	125910	400-210	126169	55084-B7
125688	122-703	125763	138-36	125838	300-143	125911	400-211	126170	55084-B9
125689	122-704	125764	138-38	125839	300-144	125912	400-212	126171	55084-B11
125690	122-705	125765	138-52	125840	300-145	125913	400-215	126172	55084-B13
125691	122-706	125766	138-67	125841	300-146	125914	400-218	126173	55084-B15
125692	122-707	125767	138-68	125842	300-147	125915	400-221	126174	55084-B17
125693	122-708	125768	138-69	125843	300-150	125916	400-222	126232	74273-1
125694	122-709	125769	138-74	125844	300-152	125917	400-302	126233	W-666
125695	122-710	125770	700-76	125845	300-153	125918	400-402	126234	W-1238
125696	123-37	125771	138-119	125846	300-154	125919	400-513	126235	W-1241
125698	123-123	125772	138-120	125847	300-155	125920	400-519	126237	W-6104
125699	123-135	125773	138-122	125848	300-170	125921	400-801	126238	W-9277
125700	123-154	125774	138-123	125849	300-171	125922	400-1002	126239	W-9278
125701	123-158	125775	138-127	125850	300-172	125923	1000-203	126240	W-9279-A
125702	123-159	125776	138-128	125851	300-173	125924	400-1404	126241	W-10086
125703	123-308	125777	138-129	125852	300-174	125925	500-4	126242	138-43
125704	123-314	125778	138-130	125853	300-175	125926	500-6	126243	138-44
125705	123-342	125779	138-133	125854	300-177	125927	500-7	126244	138-49
125706	123-343	125780	138-134	125855	300-178	125928	500-19	126245	138-125
125707	123-357	125781	138-135	125856	300-179	125929	500-80	126246	138-126
125708	123-362	125782	138-136	125857	300-180	125930	500-96	126247	122-348
125709	123-364	125783	138-139	125858	300-181	125931	500-99	126248	122-354
125710	123-412	125785	200-133	125859	300-200	125932	500-104	126249	122-355
125711	123-447	125786	200-137	125860	300-201	125933	500-105	126250	33-275
125712	125-23	125787	200-139	125861	300-302	125934	500-112	126251	200-1177
125713	125-55	125788	200-148	125862	300-303	125935	500-205	126253	125-217
								126336	W-2657