

Bulletin No. 1093
Issue 1
March, 1941

TELETYPE

PRINTING TELEGRAPH SYSTEMS

PARTS
PERFORATOR





ALPHABETICAL INDEX

	<u>Page</u>
Adjusting Plate	6
Back Spacer (Assem.)	5
Bases	1, 2
Bell Cranks	4
Bell Rod Crank	6
Bushing - Outlet	1, 2
Cables	1
Chad Chute	1
Condenser	7, 9, 10
Condenser Bracket	7, 9
Contact (Assem.)	4
Contact Bracket (Assem.)	4
Contact Lever (Assem.)	4
Contact Lever Stop.	6
Copyholder (Assem.)	10
Cord (Assem.)	1
Cover	8
Detent.	5
Detent Star Wheel	5
Disc.	6
End-of-line Indicating Mechanism - Adjustable	6
End-of-line Indicating Mechanism - Non-Adjustable	9
Feed Roll	5
Feed Roll Bracket (Assem.)	5
Gear.	6, 9
Idler Lever (Assem.)	6
Key Levers.	1, 8, 11
Key Lever Bearing	2
Key Lever Guide	1
Key Lever Shaft	2
Key Lever Spring	2
Keytops	1, 8, 11
Lamp.	2
Lamp Contact Bracket (Assem.)	6, 9
Lamp Contact Lever (Assem.)	6, 9
Lamp Guard.	2
Lamp Terminal Block	6, 9
Lamp Release Rod.	6
Lamp Socket	2

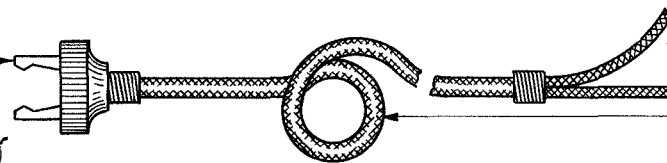
II

	<u>Page</u>
Loops	2
Loop Bearing.	2
Loop Stop	2
Magnet	3
Numerical Index12,13, 14
Pawl.	6
Pawl Stop	6
Pinion.	5
Plug	1
Punch Bars.	4
Punch Block (Assem.)	5
Punch Hammer (Assem.)	4
Punch Magnet Bracket (Assem.)	3
Push Button	3
Push Button Box	3
Radio Filter.	7, 10
Rapid Tape Feed-out Device.	7
Relay	7
Resistor - 200 ohms	10
Resistor - 400 ohms	7
Resistor - 1000 ohms.	7
Spacer Bar.	1, 8
Spacer Bar Loop	1
Spacer Key Lever.	1, 8
Spacer Lever Plate.	2
Spring Arm	4
Tape Reel (Assem.)	8
Tape Tension Lever	1
Terminal Block.	2
Yoke Suspension Arm	4, 9

122-143 PLUG

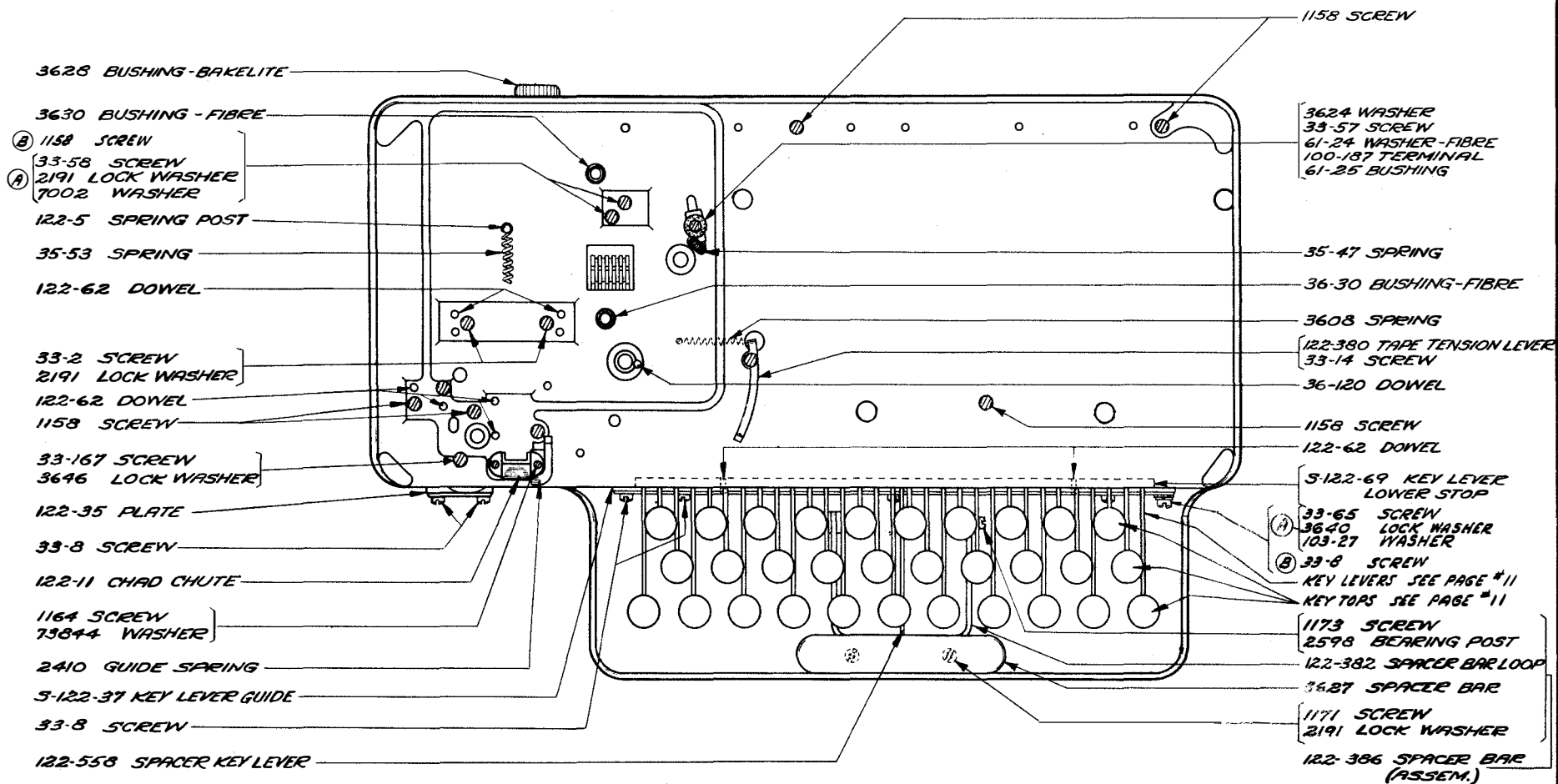
99967 CABLE (W.D. 1977) (FOR PERFORATORS EQUIPPED WITH 101090 CABLE (W.D. 1977) (RAPID TAPE FEED-OUT & ADJUSTABLE END OF LINE INDICATING DEVICES))

94261 CABLE (W.D. 335) (FOR PERFORATORS NOT EQUIPPED AS ABOVE)



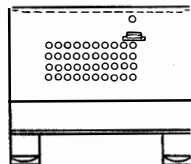
122-453 CORD (ASSEM.)

122-454 CORD

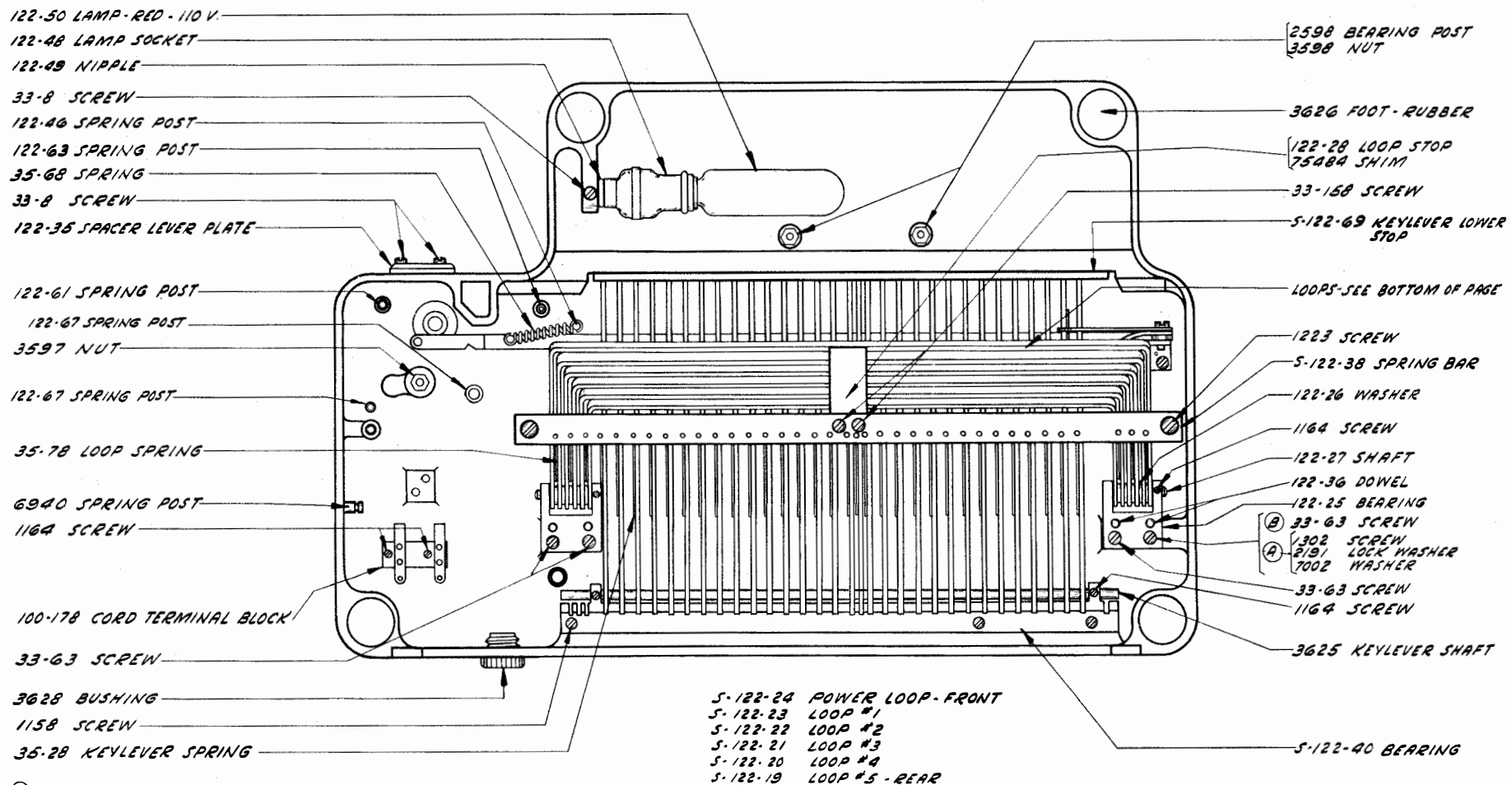


(A) FOR PERFORATORS EQUIPPED WITH RAPID TAPE FEED-OUT
(B) FOR PERFORATORS NOT EQUIPPED WITH RAPID TAPE FEED-OUT

BASE - TOP VIEW

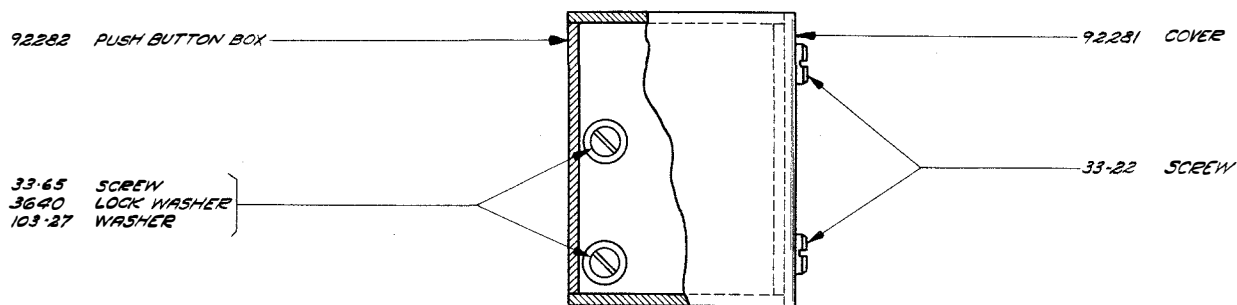
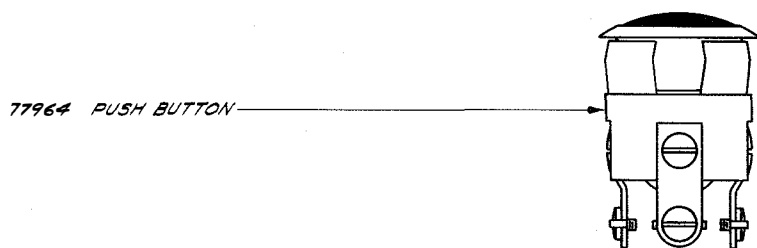
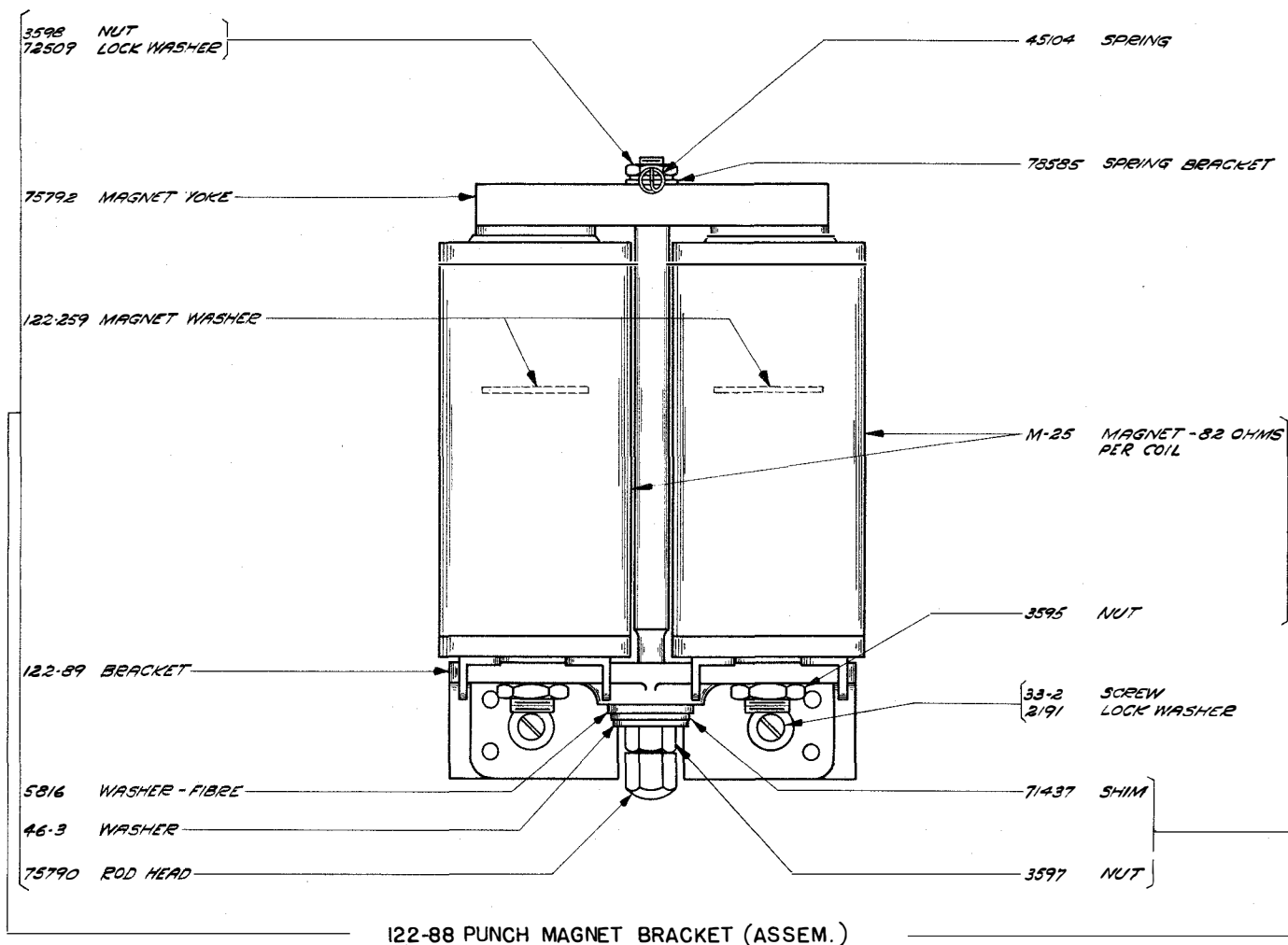


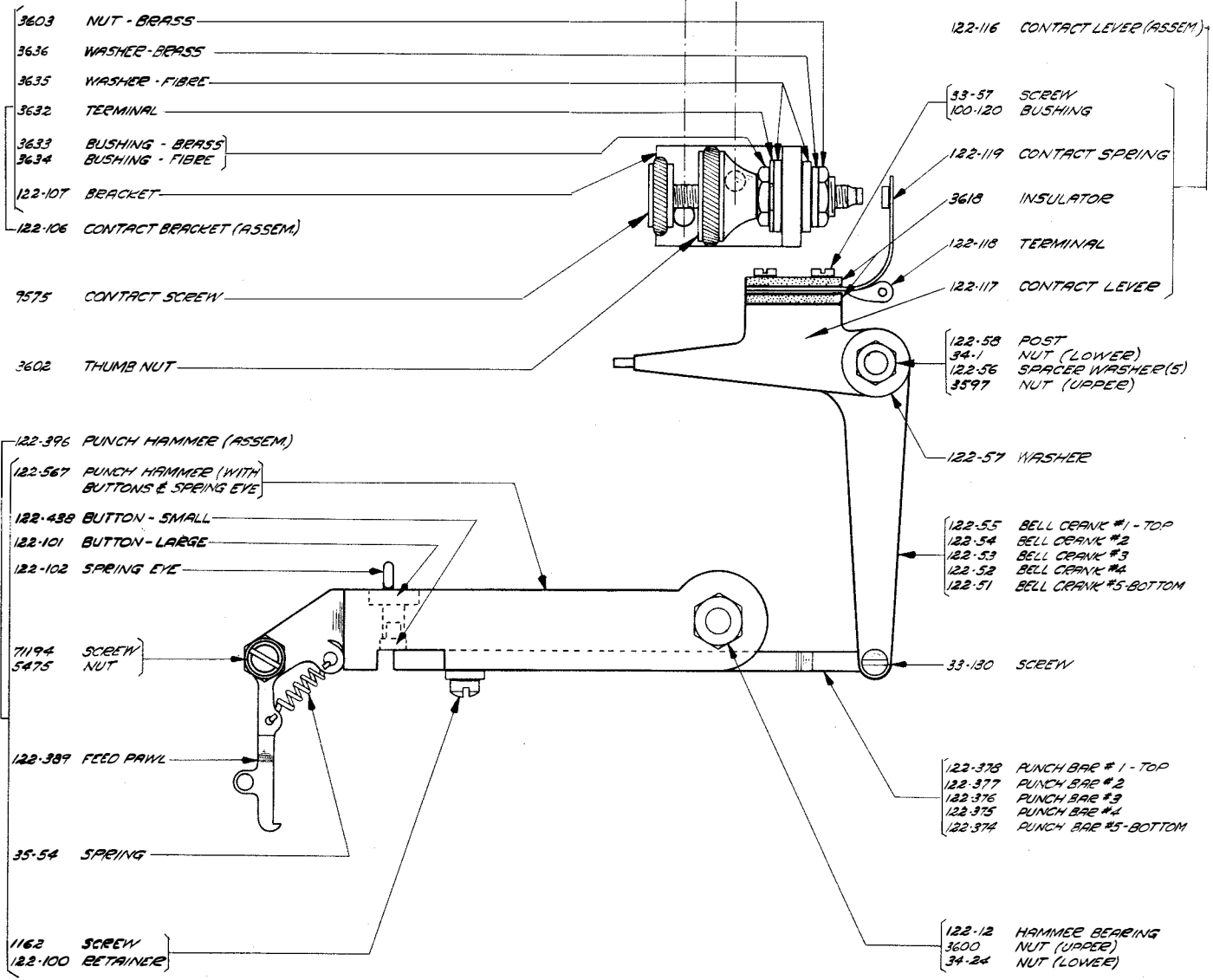
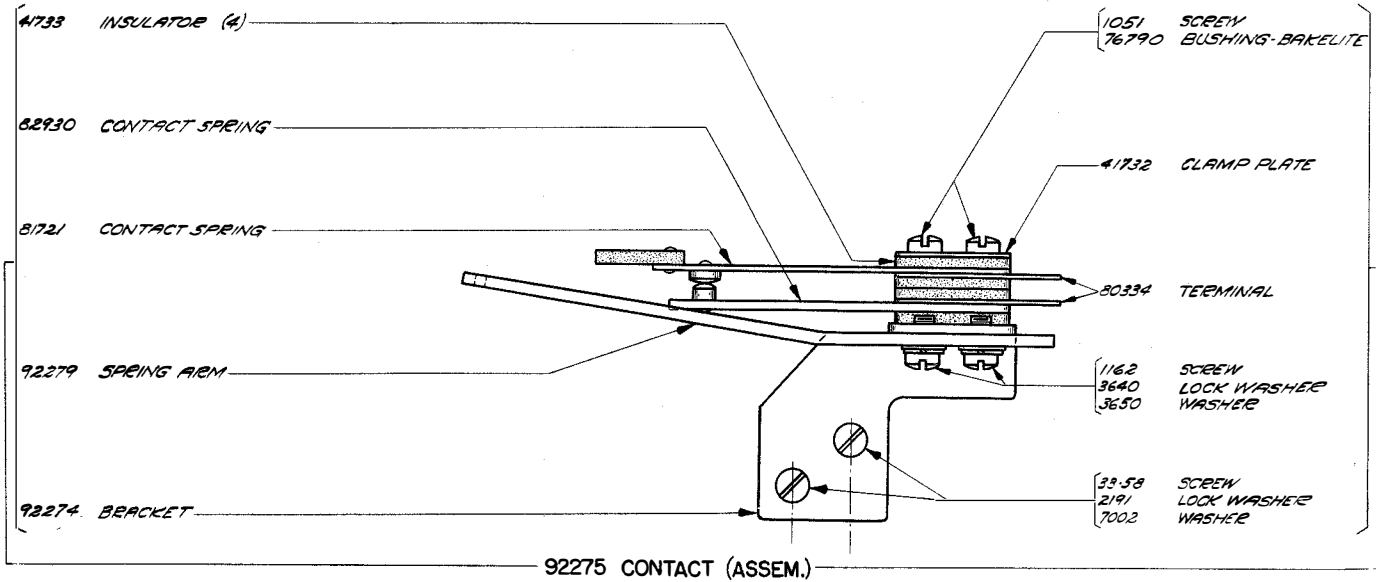
6374 LAMP GUARD - BLACK

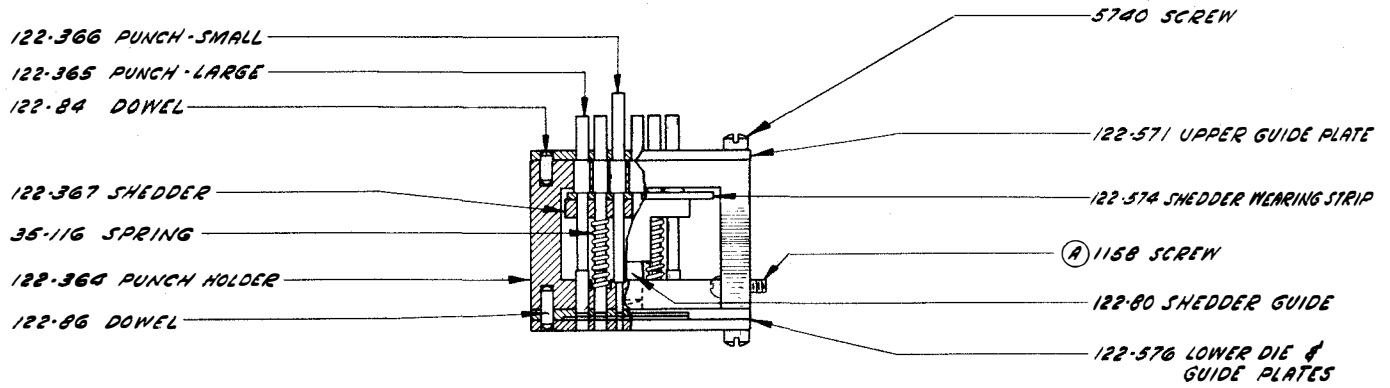


(A) FOR PERFORATORS EQUIPPED WITH RAPID TAPE FEED-OUT
(B) FOR PERFORATORS NOT EQUIPPED WITH RAPID TAPE FEED-OUT

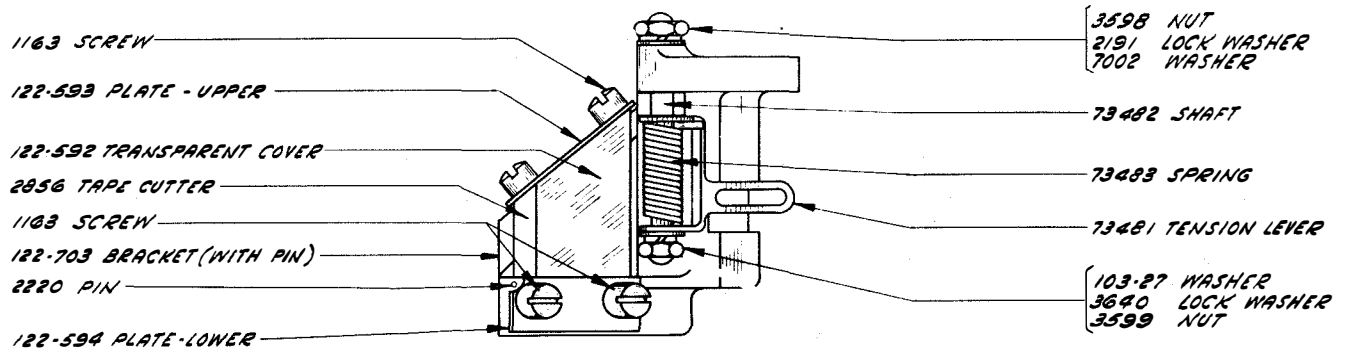
BASE - BOTTOM VIEW



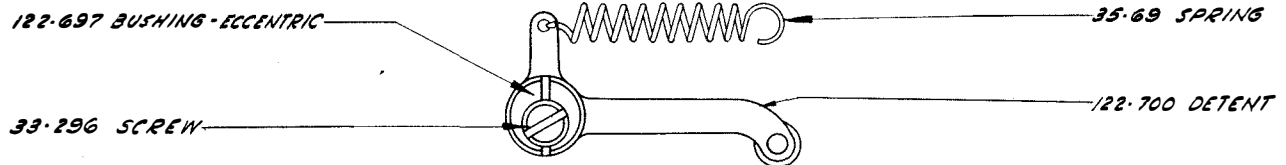
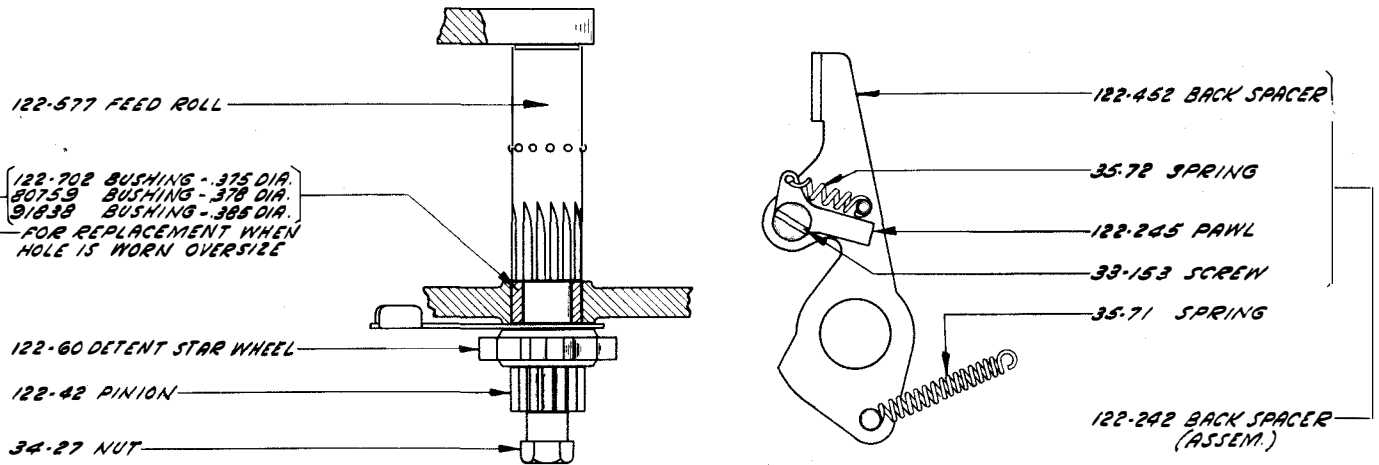


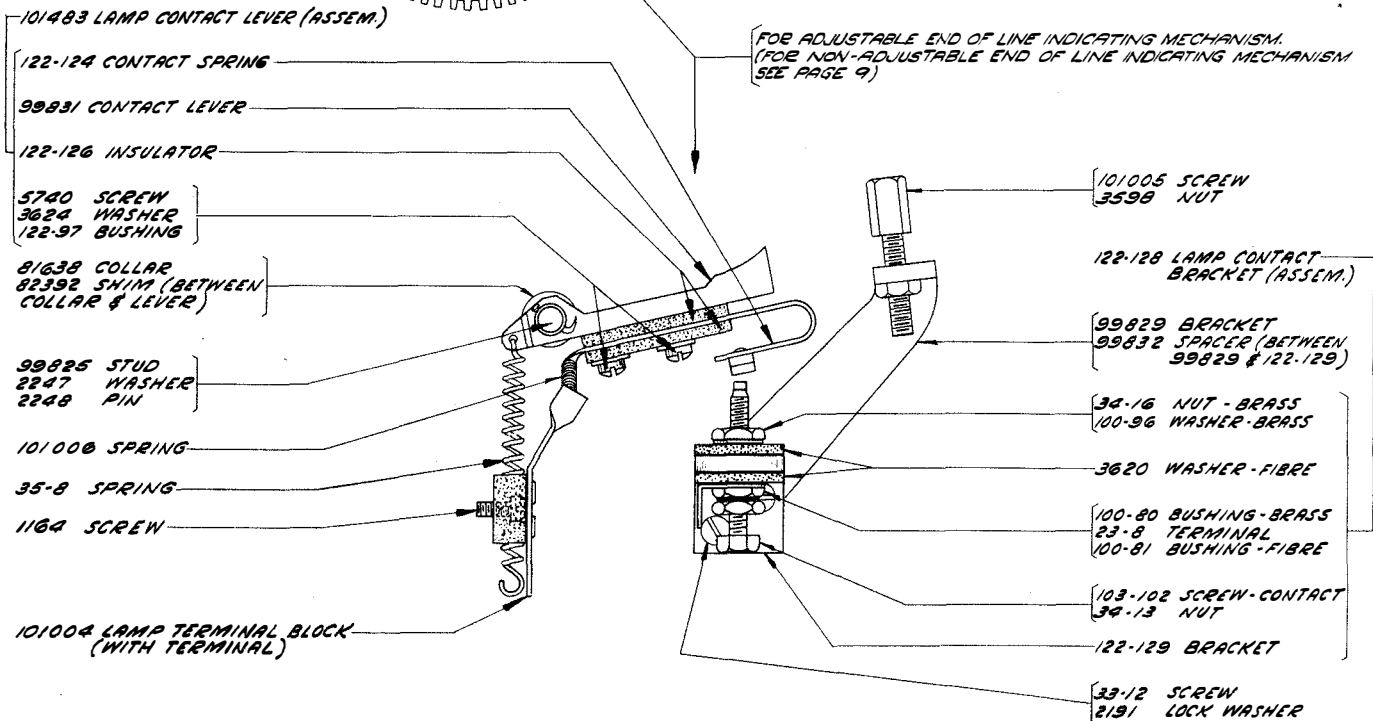
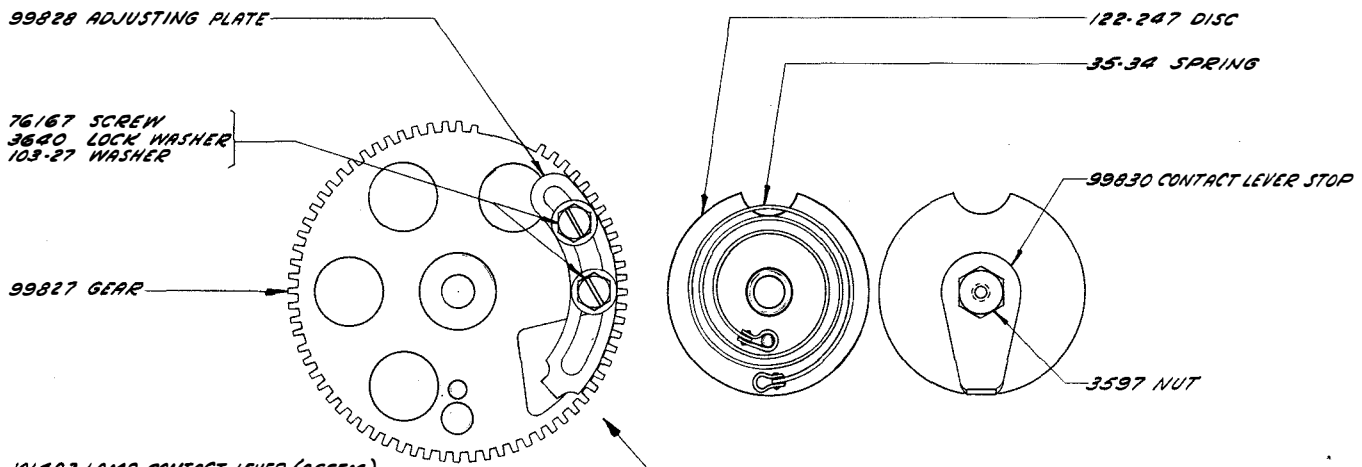
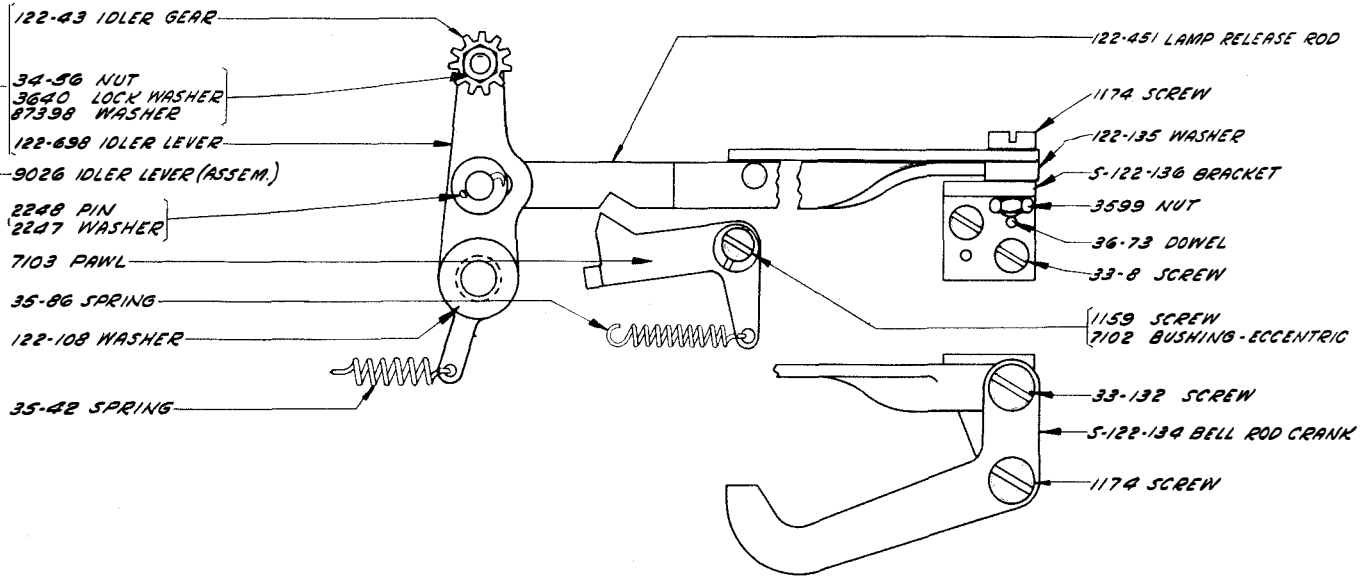


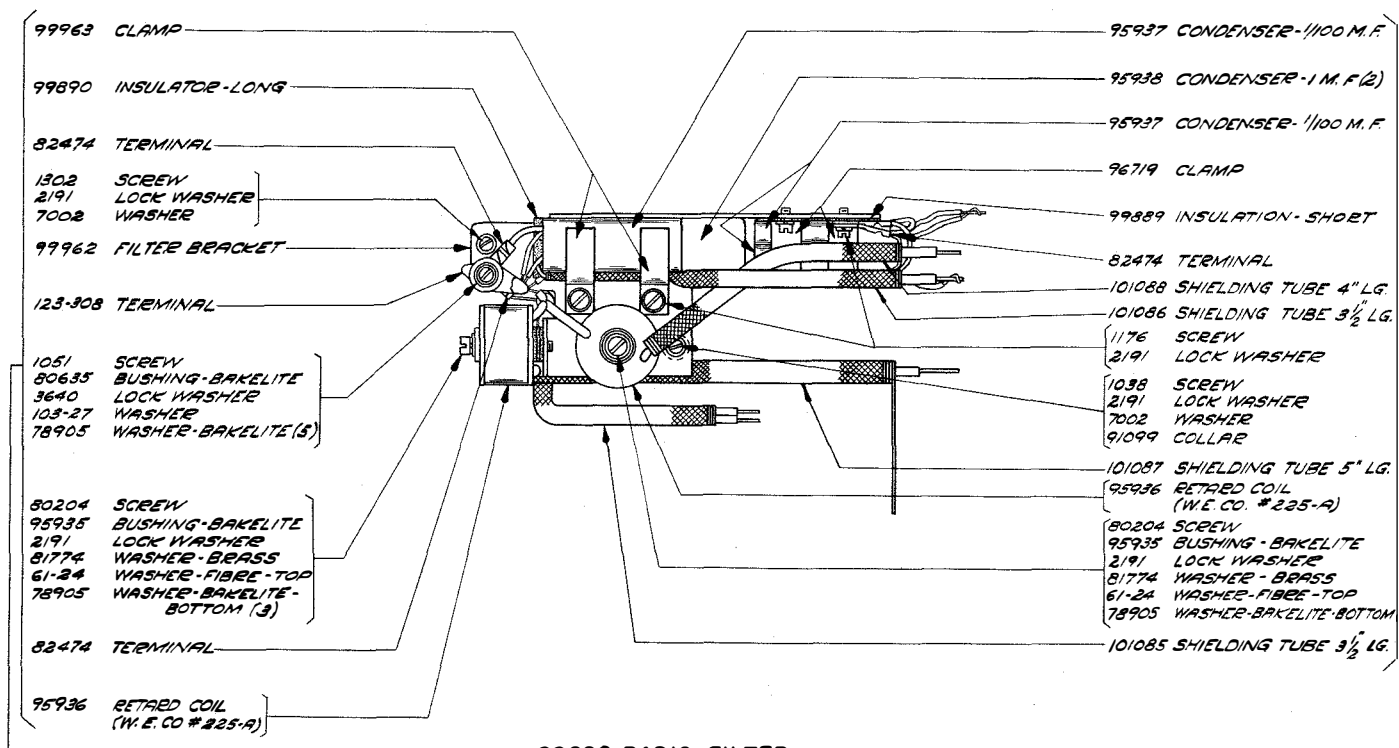
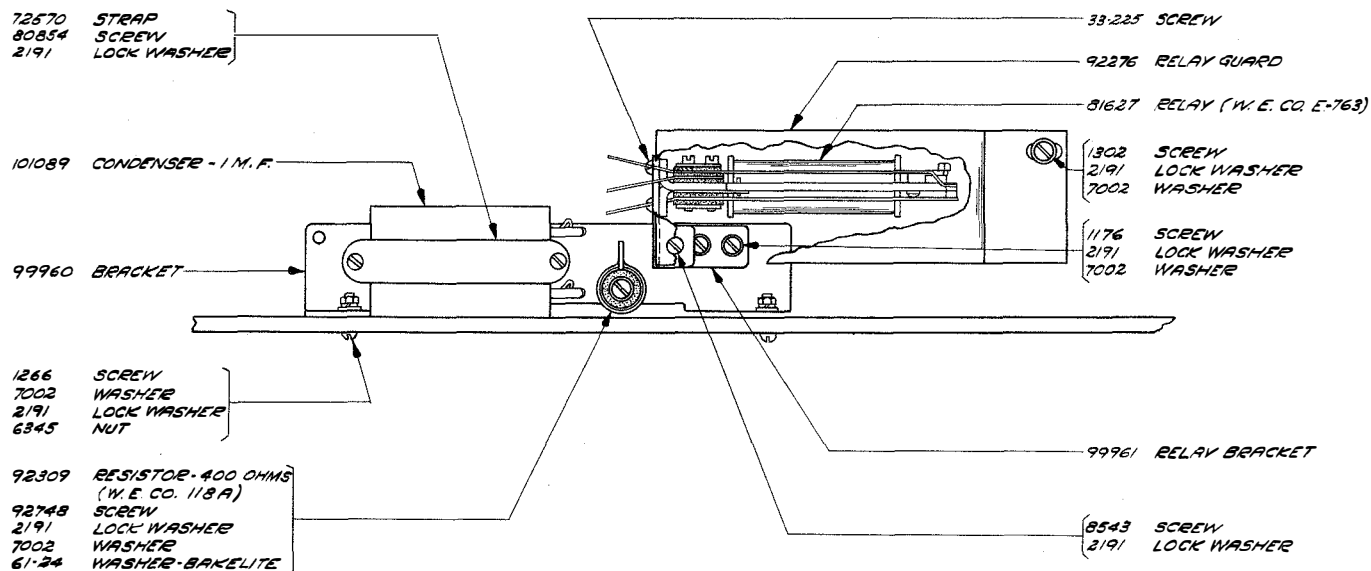
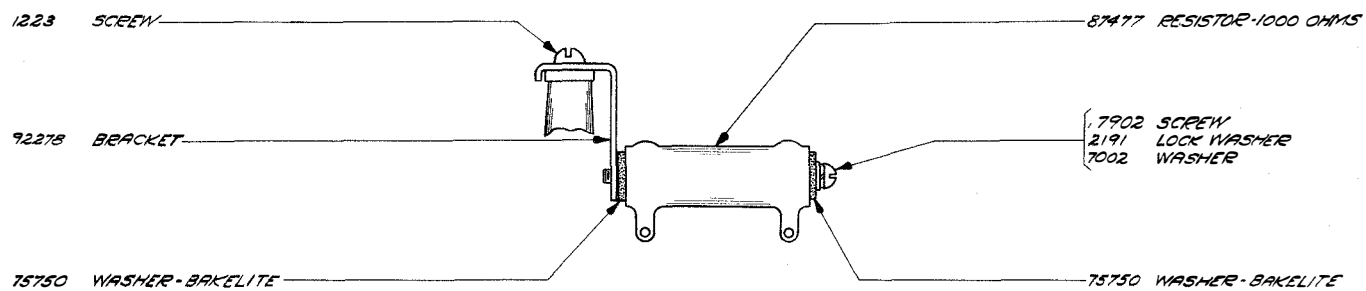
122-575 PUNCH BLOCK (ASSEM.) STRAIGHT FEED HOLE
EXCLUDES PARTS MARKED Ⓐ



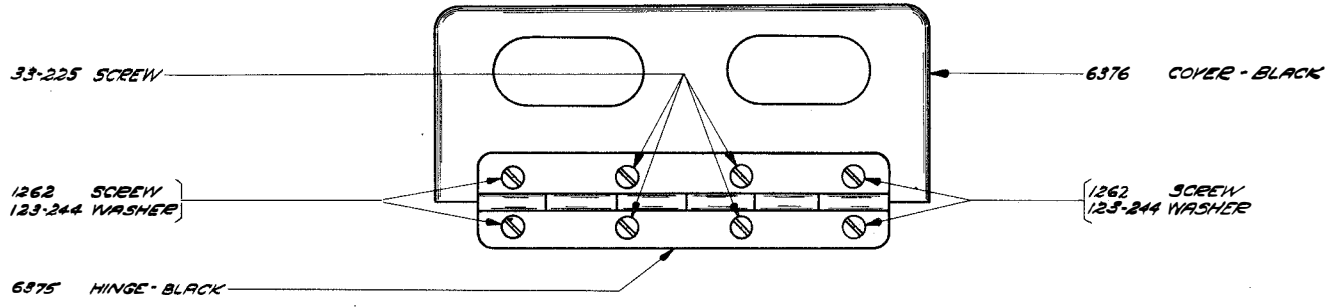
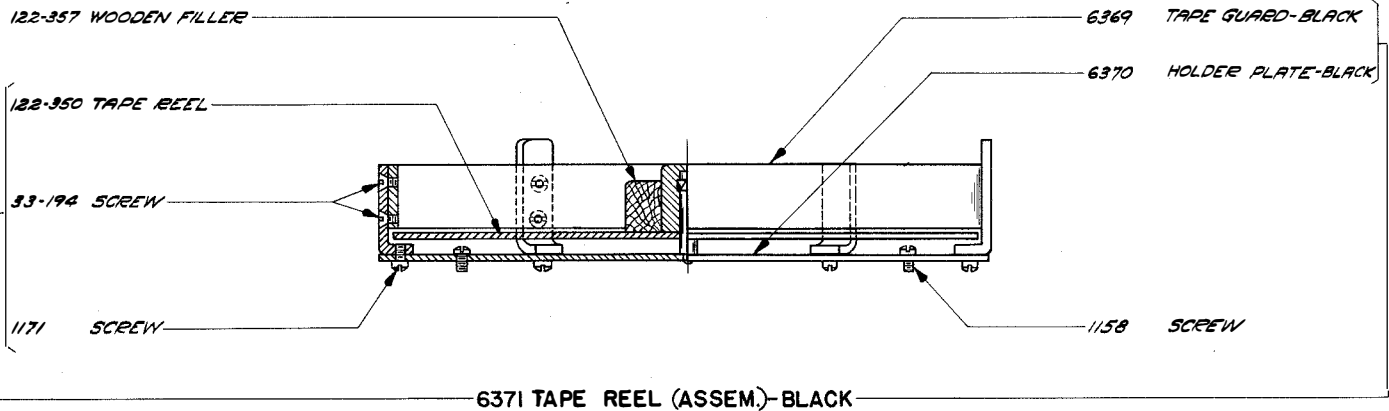
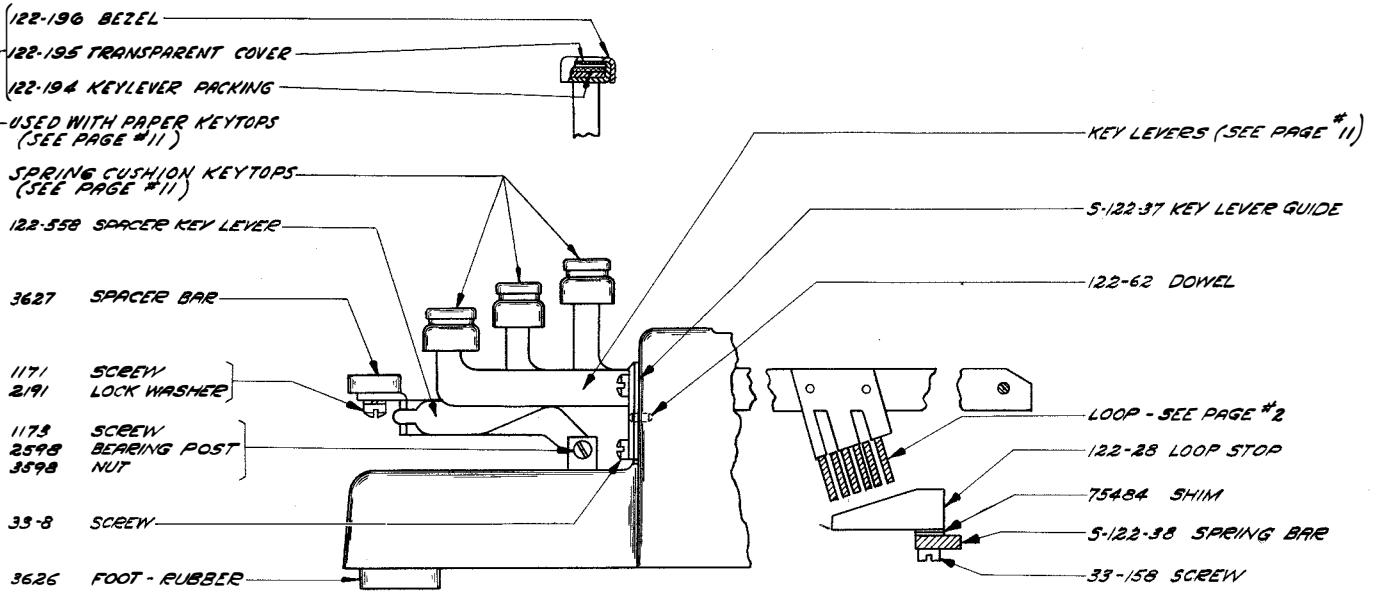
122-586 FEED ROLL BRACKET (ASSEM.)







99822 RADIO FILTER



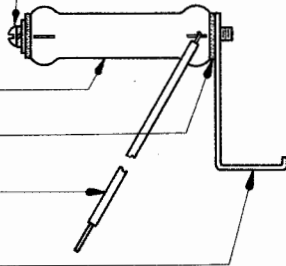
- 77902 SCREW
- 2191 LOCK WASHER
- 7002 WASHER
- 75750 WASHER-BAKELITE

- 93711 RESISTOR - 200 OHMS

- 75750 WASHER-BAKELITE

- 73712 STRAP WIRE

- 92278 BRACKET



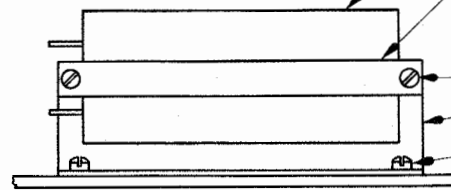
- 3638 CONDENSER (1/2 M.F.)

- 122-276 STRAP

- 33-193 SCREW

- 122-275 BRACKET

- 1263 SCREW



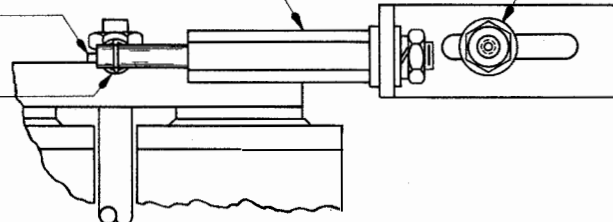
- 78584 POST
- 3598 NUT
- 2191 LOCK WASHER
- 7002 WASHER

- 78585 BRACKET

- 45104 SPRING

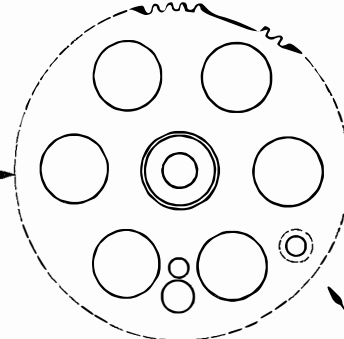
- 1302 SCREW
- 2658 NUT
- 2191 LOCK WASHER
- 7002 WASHER

- 78583 BRACKET



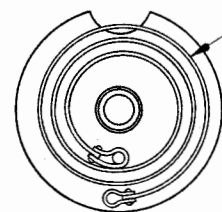
78604 YOKE SUSPENSION (ASSEM.)

- 122-137 GEAR



- 35-34 SPRING

- 122-247 DISC



(FOR NON-ADJUSTABLE END OF LINE INDICATING MECHANISM. (FOR ADJUSTABLE END OF LINE INDICATING MECHANISM SEE PAGE 6))

- 122-390 LAMP CONTACT LEVER (ASSEM.)

- 122-124 CONTACT SPRING

- 122-381 CONTACT LEVER

- 122-126 INSULATOR

- 5740 SCREW
- 3624 WASHER
- 122-97 BUSHING

- 3745 STUD
- 2247 WASHER
- 82392 SHIM
- 2248 PIN

- 35-80 SPRING

- 1164 SCREW

- 122-94 LAMP TERMINAL BLOCK (WITH TERMINAL)

- 35-8 SPRING

- 122-128 LAMP CONTACT BRACKET (ASSEM.)

- 34-16 NUT
- 100-96 WASHER

- 3620 WASHER - FIBRE

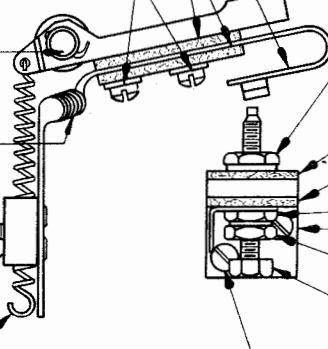
- 100-80 BUSHING - BRASS
- 23-8 TERMINAL
- 100-81 BUSHING - FIBRE

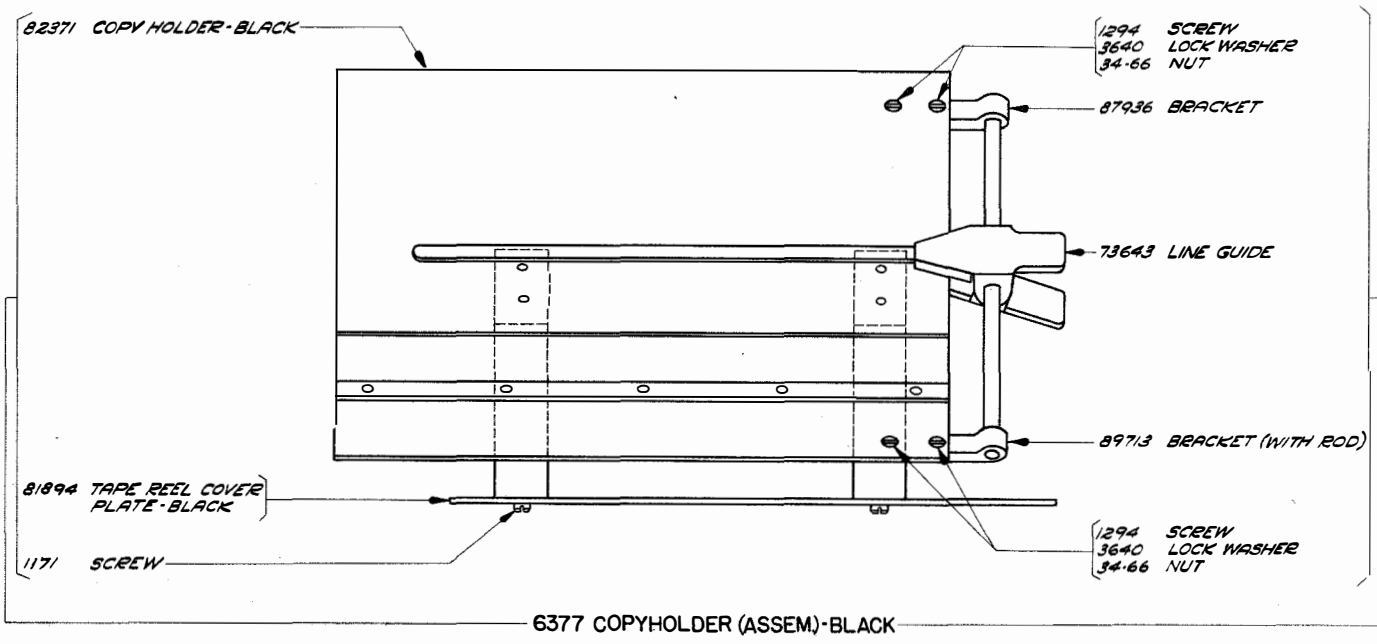
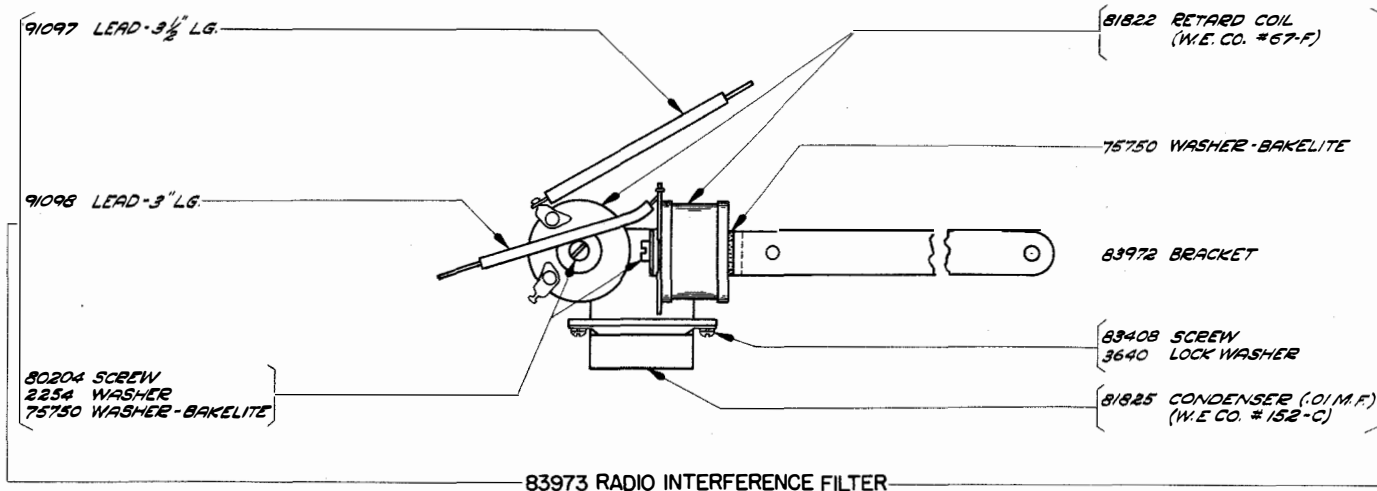
- 122-129 BRACKET

- 34-13 NUT

- 103-102 SCREW - CONTACT

- 33-8 SCREW





Description	KEYTOPS				KEY LEVERS (WITH COMBS)		
	WEATHER		COMMUNICATIONS		For Spring Cushion Keytops	For Paper Keytops	
	#89410 Set of Spring Cushion Keytops	#84026 Set of Paper Keytops	#78932 Set of Spring Cushion Keytops	#92325 Set of Paper Keytops			
A	↑	89414	84027			78913	
A	⊕	89425	84038	78946	122-459	78914	122-596
B	?			78947	122-460		122-597
B	○	89423	84036			78915	
C	∕			78948	122-461		122-598
C	∕	89415	84028			7719	
D	\$			78949	122-462		122-599
D	3	78950	122-463	78950	122-463	78916	122-600
E	→	89416	84029			78917	
F	!			78951	122-581		122-601
F	!	89417	84030			78918	
G	&			78952	122-465		122-602
G	&	89418	84031			7728	
H	∕			78953	122-466		122-603
H	∕	78954	122-467	78954	122-467	7718	122-604
I	8	89419	84032			7717	
J	∕			78955	122-582		122-605
J	∕	89420	84033			7712	
K	(78956	122-469		122-606
K	(89421	84034			78919	
L)			78957	122-470		122-607
L)	78958	122-471	78958	122-471	78920	122-608
M	⊙	89426	84071			7710	
N	9			78959	122-472		122-609
N	9	78960	122-473	78960	122-473	78921	122-610
O	0	78961	122-474	78961	122-474	7733	122-611
O	0	78962	122-475	78962	122-475	78922	122-612
P	1	78963	122-476	78963	122-476	78923	122-613
P	1	78963	122-476	78963	122-476	78923	122-613
Q	4	78980	122-710	78980	122-710	78924	122-614
R	BELL	78964	122-478	78964	122-478	78925	122-615
R	BELL	78965	122-479	78965	122-479	7724	122-616
S	5					7723	
S	5	89424	84037				
T	⊙			78966	122-480		122-617
T	⊙			78967	122-481	78926	122-618
V	2	78967	122-481	78967	122-481	78927	122-619
V	2	78968	122-482	78968	122-482	7729	122-620
W	∕	78969	122-483	78969	122-483	7730	
W	∕	89422	84035				
X	6			78970	122-484		122-621
X	6	78972	122-432	78972	122-432	101015	122-625
Y	+	78973	122-433	78973	122-433	78928	122-626
Y	+	78976	122-435	78976	122-435	78930	122-623
Z	"	78978	122-434	78978	122-434	78929	122-624
Z	"	89413	84039			78931	
FIGS		78972	122-432	78972	122-432		
LTRS		78973	122-433	78973	122-433		
CAR. RET.		78976	122-435	78976	122-435		
LINE FEED		78978	122-434	78978	122-434		
—		89413	84039				
BLANK				78971	122-431		122-622

NUMERICAL INDEX

M-25	Magnet - 82 ohms, 3	122-57	Washer, 4	122-472	(N), 11
23-8	Terminal, 6,9	122-58	Post, 4	122-473	(O 9), 11
33-2	Screw (6-32 x 3/8), 1,3	122-60	Detent Star Wheel, 5	122-474	(P 0), 11
33-8	Screw (4-36 x 1/4), 1,2, 6,8,9	122-61	Spring Post, 2	122-475	(Q 1), 11
33-12	Screw (4-36 x 1/2), 6	122-62	Dowel, 1,8	122-476	(R 4), 11
33-14	Screw (2-56 x 3/16), 1	122-63	Spring Post, 2	122-478	(T 5), 11
33-22	Screw (5-44 x 13/32), 3	122-67	Spring Post, 2	122-479	(U 7), 11
33-57	Screw (2-56 x 9/32), 1,4	S-122-69	Key Lever Lower Stop, 1,2	122-480	(V), 11
33-58	Screw (6-32 x 7/16), 1,4	122-80	Shedder Guide, 5	122-481	(W 2), 11
33-63	Screw (6-32 x 1/2), 2	122-84	Dowel, 5	122-482	(X /), 11
33-65	Screw (4-36 x 3/8), 1,3	122-86	Dowel, 5	122-483	(Y 6), 11
33-130	Screw (1-72 Shoulder), 4	122-88	Punch Magnet Bracket (Assem.), 3	122-484	(Z), 11
33-132	Screw (4-40 Shoulder), 6	122-89	Bracket, 3	122-558	Spacer Key Lever, 1,8
33-153	Screw (3-48 Shoulder), 5	122-94	Lamp Terminal Block (with Terminal), 9	122-567	Punch Hammer (with Buttons & Spring Eye), 4
33-158	Screw (6-40 x 1/2), 2,8	122-97	Bushing, 6,9	122-571	Upper Guide Plate, 5
33-167	Screw (8-40 Stop), 1	122-100	Retainer, 4	122-574	Shedder Wearing Strip, 5
33-193	Screw (6-32 x 1), 9	122-101	Button - Large, 4	122-575	Punch Block (Assem.), 5
33-194	Screw (6-32 x 3/16), 8	122-102	Spring Eye, 4	122-576	Lower Die & Guide Plates, 5
33-225	Screw (6-32 x 3/16), 7,8	122-106	Contact Bracket (Assem.), 4	122-577	Feed Roll, 5
33-296	Screw (6-40 Shoulder), 5	122-107	Bracket, 4	122-581	Paper Keytop (F), 11
34-1	Nut (1/4-32 Hex.), 4	122-108	Washer, 6	122-582	Paper Keytop (J), 11
34-13	Nut (3-56 Hex.), 6,9	122-116	Contact Lever (Assem.), 4	122-586	Feed Roll Bracket (Assem.), 5
34-16	Nut (5/32-60 Hex.), 6,9	122-117	Contact Lever, 4	122-592	Transparent Cover, 5
34-24	Nut (1/4-32 Hex.), 4	122-118	Terminal, 4	122-593	Plate - Upper, 5
34-27	Nut (5/32-40 Hex.), 5	122-119	Contact Spring, 4	122-594	Plate - Lower, 5
34-56	Nut (4-40 Hex.), 6	122-124	Contact Spring, 6,9	122-596	Key Lever, 11
35-8	Spring, 6,9	122-126	Insulator, 6,9	122-597	Key Lever, 11
35-28	Key Lever Spring, 6,9	122-128	Lamp Contact Bracket (Assem.), 6,9	122-598	Key Lever, 11
35-34	Spring, 6,9	122-129	Bracket, 6,9	122-599	Key Lever, 11
35-42	Spring, 6	122-135	Washer, 6	122-600	Key Lever, 11
35-47	Spring, 1	S-122-136	Bracket, 6	122-601	Key Lever, 11
35-53	Spring, 1	122-137	Gear, 9	122-602	Key Lever, 11
35-54	Spring, 4	122-143	Plug, 1	122-603	Key Lever, 11
34-66	Nut (4-36 Hex.), 10	122-194	Key Lever Packing, 8	122-604	Key Lever, 11
35-68	Spring, 2	122-195	Transparent Cover, 8	122-605	Key Lever, 11
35-69	Spring, 5	122-196	Bezel, 8	122-606	Key Lever, 11
35-71	Spring, 5	122-242	Back Spacer (Assem.), 5	122-607	Key Lever, 11
35-72	Spring, 5	122-245	Pawl, 5	122-608	Key Lever, 11
35-78	Loop Spring, 2	122-247	Disc, 6,9	122-609	Key Lever, 11
35-80	Spring, 9	122-259	Magnet Washer, 3	122-610	Key Lever, 11
35-86	Spring, 6	122-275	Bracket, 9	122-611	Key Lever, 11
35-116	Spring, 5	122-276	Strap, 9	122-612	Key Lever, 11
36-30	Bushing - Fibre, 1	122-350	Tape Reel, 8	122-613	Key Lever, 11
36-73	Dowel, 6	122-357	Wooden Filler, 8	122-614	Key Lever, 11
36-120	Dowel, 1	122-364	Punch Holder, 5	122-615	Key Lever, 11
46-3	Washer, 3	122-365	Punch - Large, 5	122-616	Key Lever, 11
61-24	Washer - Fibre, 1,7	122-366	Punch - Small, 5	122-617	Key Lever, 11
61-25	Bushing, 1	122-367	Shedder, 5	122-618	Key Lever, 11
100-80	Bushing - Brass, 6,9	122-374	Punch Bar #5 - Bottom, 4	122-619	Key Lever, 11
100-81	Bushing - Fibre, 6,9	122-375	Punch Bar #4, 4	122-620	Key Lever, 11
100-96	Washer - Brass, 6,9	122-376	Punch Bar #3, 4	122-621	Key Lever, 11
100-120	Bushing, 4	122-377	Punch Bar #2, 4	122-622	Key Lever, 11
100-178	Cord Terminal Block, 2	122-378	Punch Bar #1 - Top, 4	122-623	Key Lever, 11
100-187	Terminal, 1	122-380	Tape Tension Lever, 1	122-624	Key Lever, 11
103-27	Washer, 1,3,5,6,7	122-381	Contact Lever, 9	122-625	Key Lever, 11
103-102	Screw (3-56 Contact), 6,9	122-382	Spacer Bar Loop, 1	122-626	Key Lever, 11
122-5	Spring Post, 1	122-386	Spacer Bar (Assem.), 1	122-697	Bushing - Eccentric, 5
122-11	Chad Chute, 1	122-389	Feed Pawl, 4	122-698	Idler Lever, 6
122-12	Hammer Bearing, 4	122-390	Lamp Contact Lever (Assem.), 9	122-700	Detent, 5
S-122-19	Loop #5, 2	122-396	Punch Hammer (Assem.), 4	122-702	Bushing - .375 Dia., 5
S-122-20	Loop #4, 2		<u>Paper Keytops</u>	122-703	Bracket (with Pin), 5
S-122-21	Loop #3, 2	122-431	(Blank), 11	122-710	Paper Keytop (S BELL), 11
S-122-22	Loop #2, 2	122-432	(Figs.), 11	123-244	Washer, 6
S-122-23	Loop #1, 2	122-433	(LRS.), 11	123-308	Terminal, 7
S-122-24	Power Loop - Front, 2	122-434	(Line Feed), 11	1038	Screw (6-40 x 9/32), 7
122-25	Bearing, 2	122-435	(CAR.RET.), 11	1051	Screw (4-40 x 1/2), 4,7
122-26	Washer, 2	122-438	Button - Small, 4	1158	Screw (6-32 x 5/16), 1,2,4,8
122-27	Shaft, 2	122-451	Lamp Release Rod, 6	1159	Screw (4-40 x 3/8), 6
122-28	Loop Stop, 2,8	122-452	Back Spacer, 5	1162	Screw (4-40 x 1/4), 4
122-35	Plate, 1,2	122-453	Lamp Cord (Assem.), 1	1163	Screw (4-40 x 3/16), 5
122-36	Dowel, 2	122-454	Cord, 1	1164	Screw (2-56 x 3/16), 1,2,6,9
S-122-37	Key Lever Guide, 1,8		<u>Paper Keytops</u>	1171	Screw (6-32 x 3/16), 1,8,10
S-122-38	Spring Bar, 2,8	122-459	(A -), 11	1173	Screw (3-48 x 1/8), 1,8
S-122-40	Bearing, 2	122-460	(B ?), 11	1174	Screw (4-40 Shoulder), 6
122-42	Pinion, 5	122-461	(C), 11		
122-43	Idler Gear, 6	122-462	(D #), 11		
122-46	Spring Post, 2	122-463	(E), 11		
122-48	Lamp Socket, 2	122-465	(G &), 11		
122-49	Nipple, 2	122-466	(H), 11		
122-50	Lamp - Red, 2	122-467	(I), 11		
122-51	Bell Crank #5 - Bottom, 4	122-469	(K ()), 11		
122-52	Bell Crank #4, 4	122-470	(L), 11		
122-53	Bell Crank #3, 4	122-471	(M), 11		
122-54	Bell Crank #2, 4				
122-55	Bell Crank #1 - Top, 4				
122-56	Spacer Washer, 4				

NUMERICAL INDEX

1176	Screw (6-40 x 3/16), 7	73482	Shaft, 5	82371	Copyholder - Black, 10
1223	Screw (10-32 x 1/2), 2,7	73483	Spring, 5	82392	Shim, 6,9
1262	Screw (6-32 x 5/16), 8	73643	Line Guide, 10	82474	Terminal, 7
1263	Screw (6-32 x 1/4), 9	73844	Washer, 1	82930	Contact Spring, 4
1266	Screw (6-32 x 7/16), 7	75484	Shim, 2,8	83408	Screw (4-40 x 3/16), 10
1294	Screw (4-36 x 1/2), 10	75750	Washer - Bakelite, 7,9	83972	Bracket, 10
1302	Screw (6-32 x 3/4), 2,7,9	75790	Rod Head, 3	83973	Radio Interference
2191	Lock Washer, 1,2,3,5,6,7,8,9	75792	Magnet Yoke, 3		Filter, 7,10
2220	Pin, 5	76167	Screw (4-40 x 3/16), 6	84026	Set of Paper Keypops, 11
2247	Washer, 6,9	76790	Bushing - Bakelite, 4		<u>Paper Keypops</u>
2248	Pin, 6,9	77902	Screw (6-40 x 2-3/8), 7,9	84027	(A ↖), 11
2254	Washer, 10	77964	Push Button, 3	84028	(D ↗), 11
2410	Guide Spring, 1	78583	Bracket, 9	84029	(F ↘), 11
2598	Bearing Post, 1,2,8	78584	Post, 9	84030	(G ↙), 11
2658	Nut (6-32 Hex.), 9	78585	Spring Bracket, 3,9	84031	(H ↓), 11
2856	Tape Cutter, 5	78604	Yoke Suspension (Assem.), 9	84032	(J ↗), 11
3595	Nut (1/4-32 Hex.), 3	78905	Washer - Bakelite, 7	84033	(K ↖), 11
3597	Nut (5-32 Hex.), 2,3,4,6	78913	Key Lever, 11	84034	(L ↘), 11
3598	Nut (6-40 Hex.), 2,3,5,6,8,9	78914	Key Lever, 11	84035	(Z +), 11
3599	Nut (4-40 Hex.), 5,6	78915	Key Lever, 11	84036	(C ○), 11
3600	Nut (3/16-40 Hex.), 4	78916	Key Lever, 11	84037	(V ⊙), 11
3602	Nut (6-40 Thumb), 4	78917	Key Lever, 11	84038	(B ⊕), 11
3603	Nut (1/4-32 Hex.-Brass), 4	78918	Key Lever, 11	84039	(-), 11
3608	Spring, 1	78919	Key Lever, 11	84071	Paper Keypop (N ⊕), 11
3618	Insulator, 4	78920	Key Lever, 11	87398	Washer, 6
3620	Washer - Fibre, 6,9	78921	Key Lever, 11	87477	Resistor - 1000 Ohms, 7
3624	Washer, 1,6,9	78922	Key Lever, 11	87936	Bracket, 10
3625	Key Lever Shaft, 2	78923	Key Lever, 11		Set of Spring Cushion
3626	Foot - Rubber, 2,8	78924	Key Lever, 11	89410	Keypops, 11
3627	Spacer Bar, 1,8	78925	Key Lever, 11		<u>Spring Cushion Keypops</u>
3628	Bushing - Bakelite, 1,2	78926	Key Lever, 11	89413	(-), 11
3630	Bushing - Fibre, 1	78927	Key Lever, 11	89414	(A ↖), 11
3632	Terminal, 4	78928	Key Lever, 11	89415	(D ↗), 11
3633	Bushing - Brass, 4	78929	Key Lever, 11	89416	(F ↘), 11
3634	Bushing - Fibre, 4	78930	Key Lever, 11	89417	(G ↙), 11
3635	Washer Fibre, 4	78931	Key Lever, 11	89418	(H ↓), 11
3636	Washer - Brass, 4	78932	Set of Spring Cushion Keypops, 11	89419	(J ↗), 11
3638	Condenser - 1/2 M.F., 9		<u>Spring Cushion Keypops</u>	89420	(K ↖), 11
3640	Lock Washer, 1,3,4,5,6,7,10	78946	(A -), 11	89421	(L ↘), 11
3646	Lock Washer, 1	78947	(E ?), 11	89422	(Z +), 11
3650	Washer, 4	78948	(C :), 11	89423	(C ○), 11
3745	Stud, 9	78949	(D \$), 11	89424	(V ⊙), 11
5475	Nut (3/16-40 Hex.), 4	78950	(E 3), 11	89425	(B ⊕), 11
5740	Screw (2-56 x 1/4), 5,6,9	78951	(F !), 11	89426	(N ⊕), 11
5816	Washer - Fibre, 3	78952	(G &), 11	89713	Bracket (with Rod), 10
6345	Nut (6-32 Hex.), 7	78953	(H ↗), 11	91097	Lead - 3-1/2" long, 10
6369	Tape Guard - Black, 8	78954	(I 8), 11	91098	Lead - 3" long, 10
6370	Holder Plate - Black, 8	78955	(J !), 11	91838	Bushing - .385 Dia., 5
6371	Tape Reel (Assem.) - Black, 8	78956	(K (), 11	91099	Collar, 7
		78957	(L (), 11	92274	Bracket, 4
		78958	(M .), 11	92275	Contact (Assem.), 4
		78959	(N), 11	92276	Relay Guard, 7
		78960	(O 9), 11	92278	Bracket, 7,9
		78961	(P 0), 11	92279	Spring Arm, 4
		78962	(Q 1), 11	92281	Cover, 3
6374	Lamp Guard - Black, 2	78963	(R 4), 11	92282	Push Button Box, 3
6375	Hinge - Black, 8	78964	(T 5), 11	92309	Resistor - 400 Ohms
6376	Cover - Black, 8	78965	(U 7), 11		(W.E. Co. #118-A), 7
6377	Copyholder (Assem.) - Black, 10	78966	(J ;), 11	92325	Set of Paper Keypops, 11
6940	Spring Post, 2	78967	(X 2), 11	92748	Screw (6-40 x 1-7/16), 7
7002	Washer, 1,2,5,7,9,10	78968	(W /), 11	93711	Resistor - 200 Ohms, 9
7102	Bushing - Eccentric, 6	78969	(Y 6), 11	93712	Strap Wire, 9
7103	Pawl, 6	78970	(Z "), 11	94261	Cable (W.D.-335), 1
7002	Washer, 1,2,5,7,9	78971	(BLANK), 11	95935	Bushing - Bakelite, 7
7710	Key Lever, 11	78972	(FIGS), 11	95936	Retard Coil (W.E. Co. #225-A), 7
7712	Key Lever, 11	78973	(LTRS), 11	95937	Condenser - 1/100 M.F., 7
7717	Key Lever, 11	78976	(CAR.RET.), 11	95938	Condenser - 1 M.F., 7
7718	Key Lever, 11	78978	(LINE FEED), 11	96719	Clamp, 7
7719	Key Lever, 11	78980	(S BELL), 11	99822	Radio Filter, 7
7723	Key Lever, 11			99825	Stud, 6
7724	Key Lever, 11	80204	Screw (6-40 x 1-1/32), 7,10	99827	Gear, 6
7728	Key Lever, 11	80334	Terminal, 4	99828	Adjusting Plate, 6
7729	Key Lever, 11	80635	Bushing - Bakelite, 7	99829	Bracket, 6
7730	Key Lever, 11	80759	Bushing - .378 Dia., 5	99830	Contact Lever Stop, 6
7733	Key Lever, 11	80854	Screw (6-40 x 1-7/16), 7	99831	Contact Lever, 6
8543	Screw (6-40 x 1/4), 7	81627	Relay (W.E. Co. #E-763), 7	99832	Spacer, 6
9026	Idler Lever (Assem.), 6	81638	Collar, 6	99889	Insulation - Short, 7
9575	Screw (6-40 Contact), 4	81721	Contact Spring, 4	99890	Insulator - Long, 7
41732	Clamp Plate, 4	81774	Washer - Brass, 7	99960	Bracket, 7
41733	Insulator, 4	81822	Retard Coil (W.E. Co. #67-F), 10	99961	Relay Bracket, 7
45104	Spring, 3,9	81825	Condenser (.01 M.F.) (W.E. Co. #152-C), 10	99962	Filter Bracket, 7
71194	Screw (3/16-40 Eccentric), 4	81825	Condenser (.01 M.F.) (W.E. Co. #152-C), 10	99963	Clamp, 7
71437	Shim, 3	81894	Tape Reel Cover Plate - Black, 10	99967	Cable (W.D.-1977), 1
72509	Lock Washer, 2			101004	Lamp Terminal Block (with Terminal), 6
72570	Strap, 7			101005	Screw (4-40 x 7/16), 6
73481	Tension Lever, 5				

NUMERICAL INDEX

101006	Spring, 6	101087	Shielding Tube -	101483	Lamp Contact Lever
101015	Key Lever, 11		5" Long, 7		(Assem.), 6
101085	Shielding Tube -	101088	Shielding Tube -		
	3-1/2" Long, 7		4" Long, 7		
101086	Shielding Tube -	101089	Condenser - 1 M.F., 7		
	3-1/2" Long, 7	101090	Cable (W.D.-1977), 1		