

**Bulletin No. 1090**  
**Issue 2**  
**February, 1942**

# **TELETYPE**

**PRINTING TELEGRAPH SYSTEMS**

**PARTS**  
**PERFORATOR TRANSMITTER**  
**(MODEL 15)**

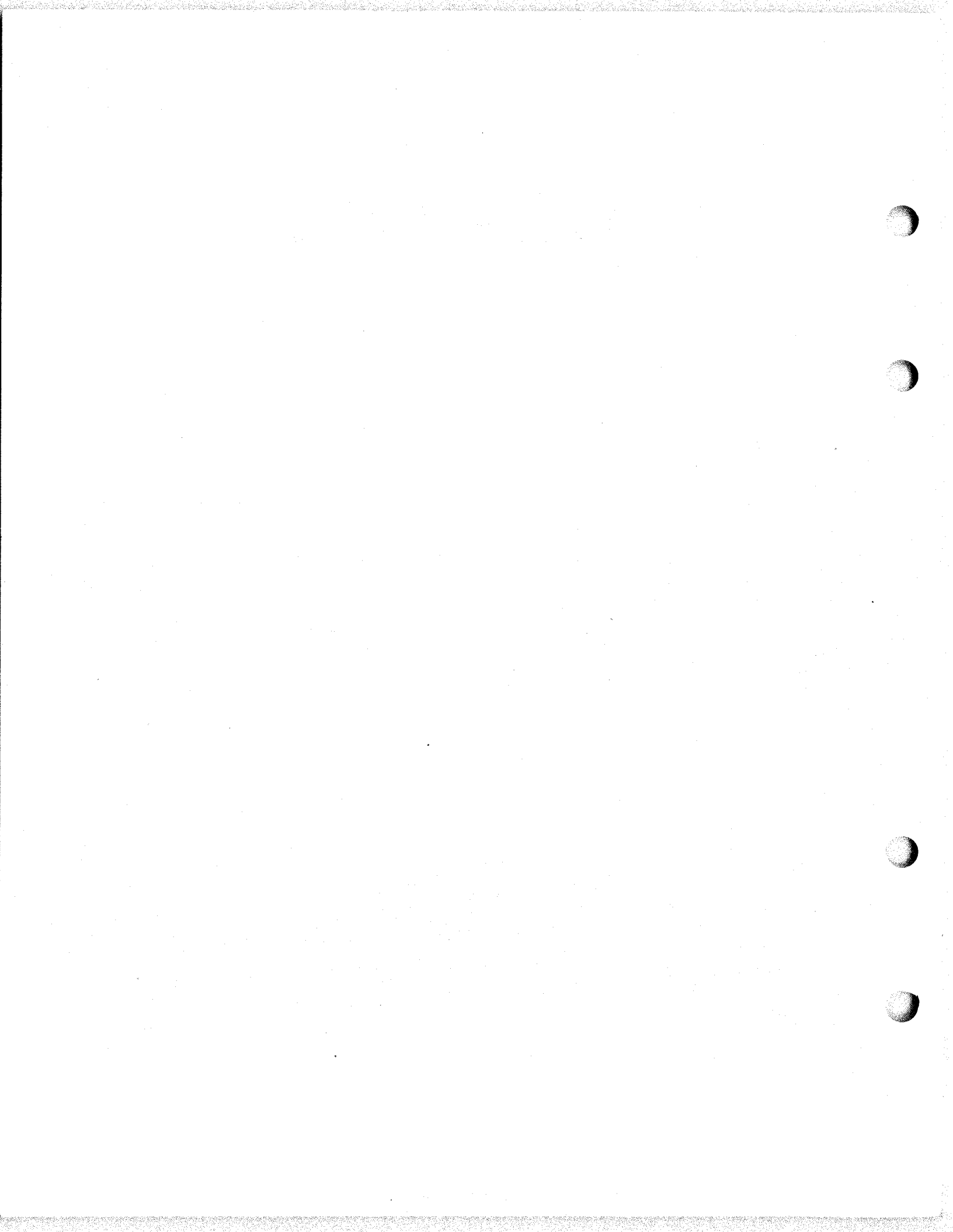


**CORPORATION**

**SUBSIDIARY OF**

***Western Electric Company***

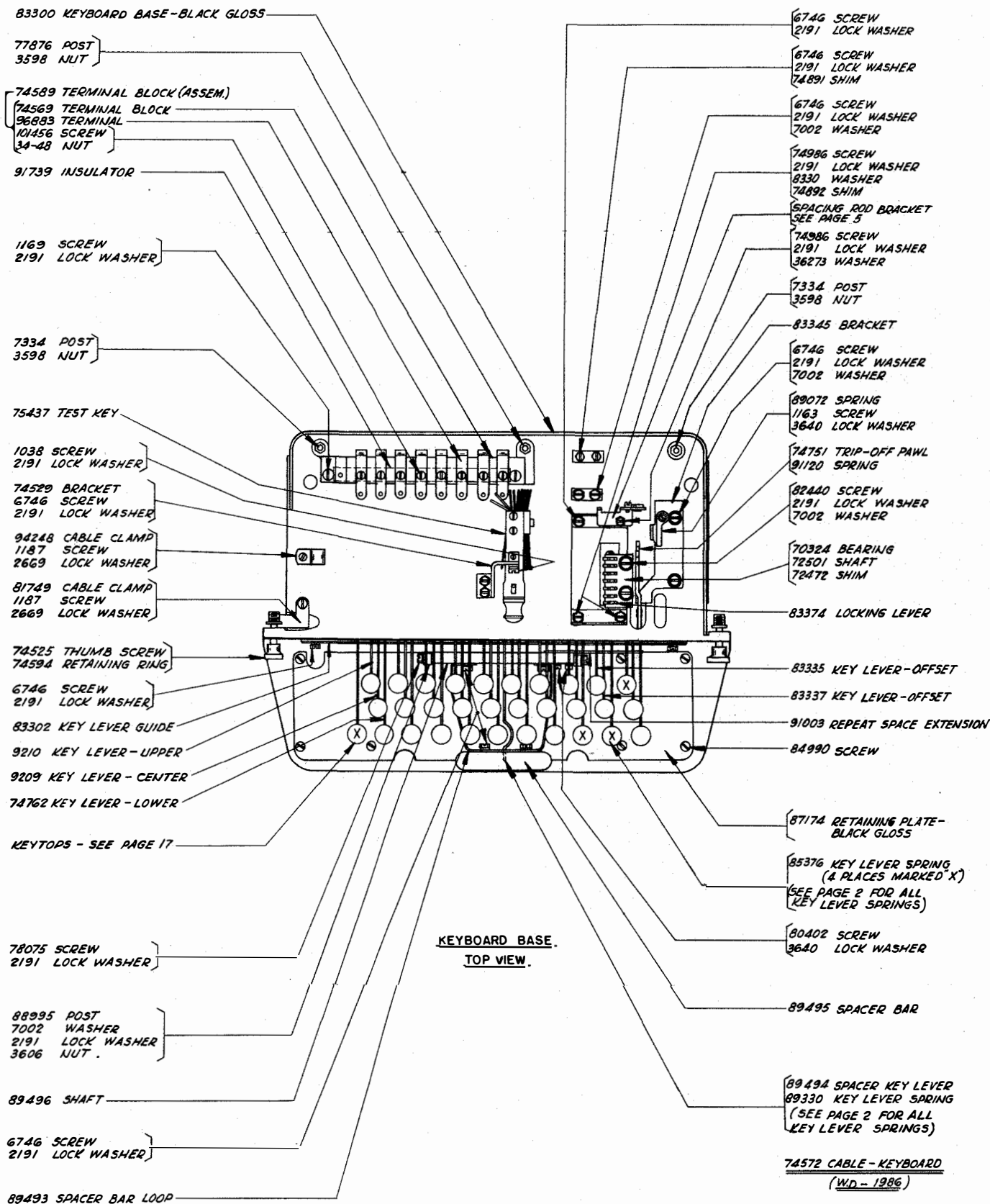
**CHICAGO, U. S. A.**

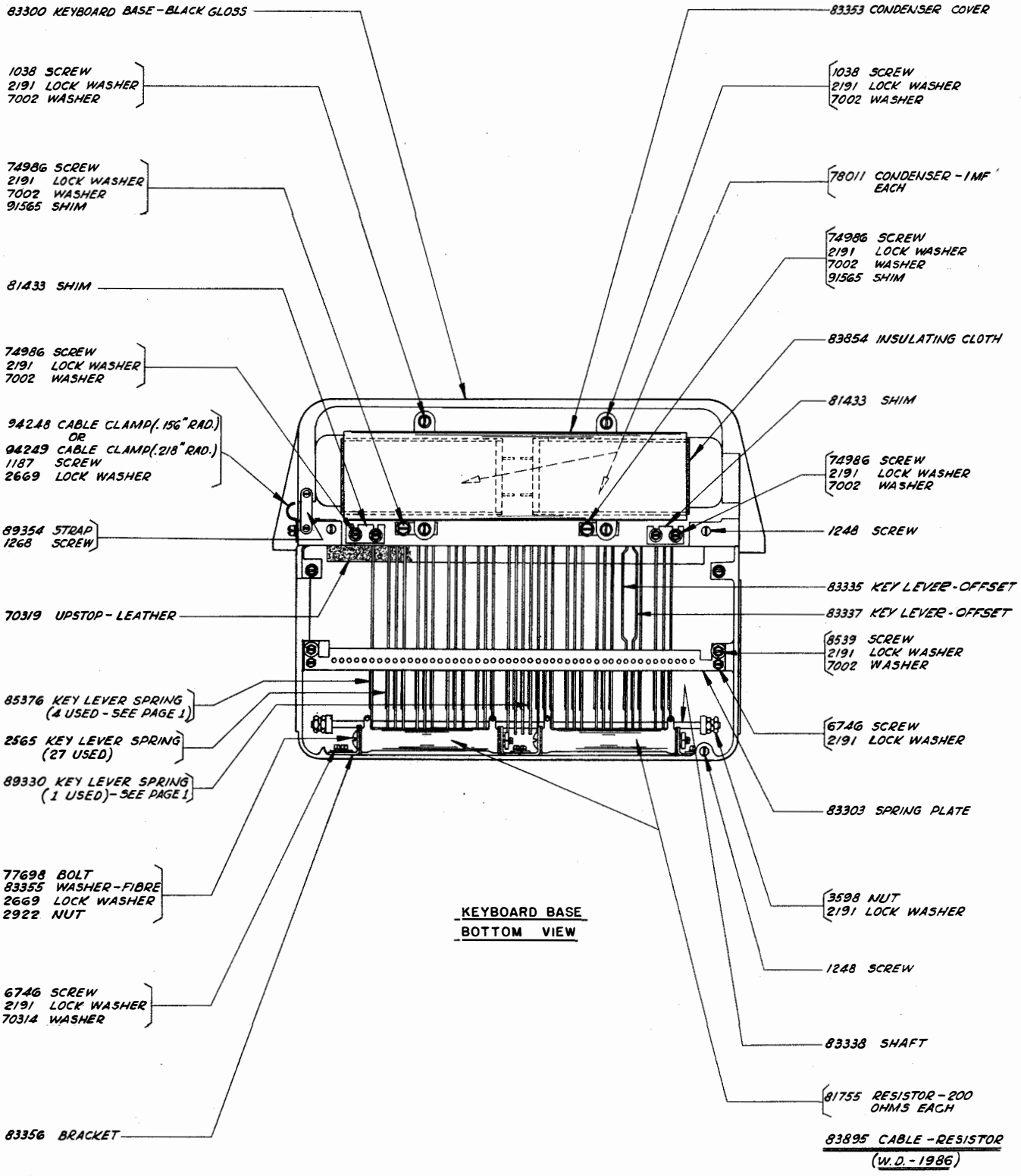


ALPHABETICAL INDEX

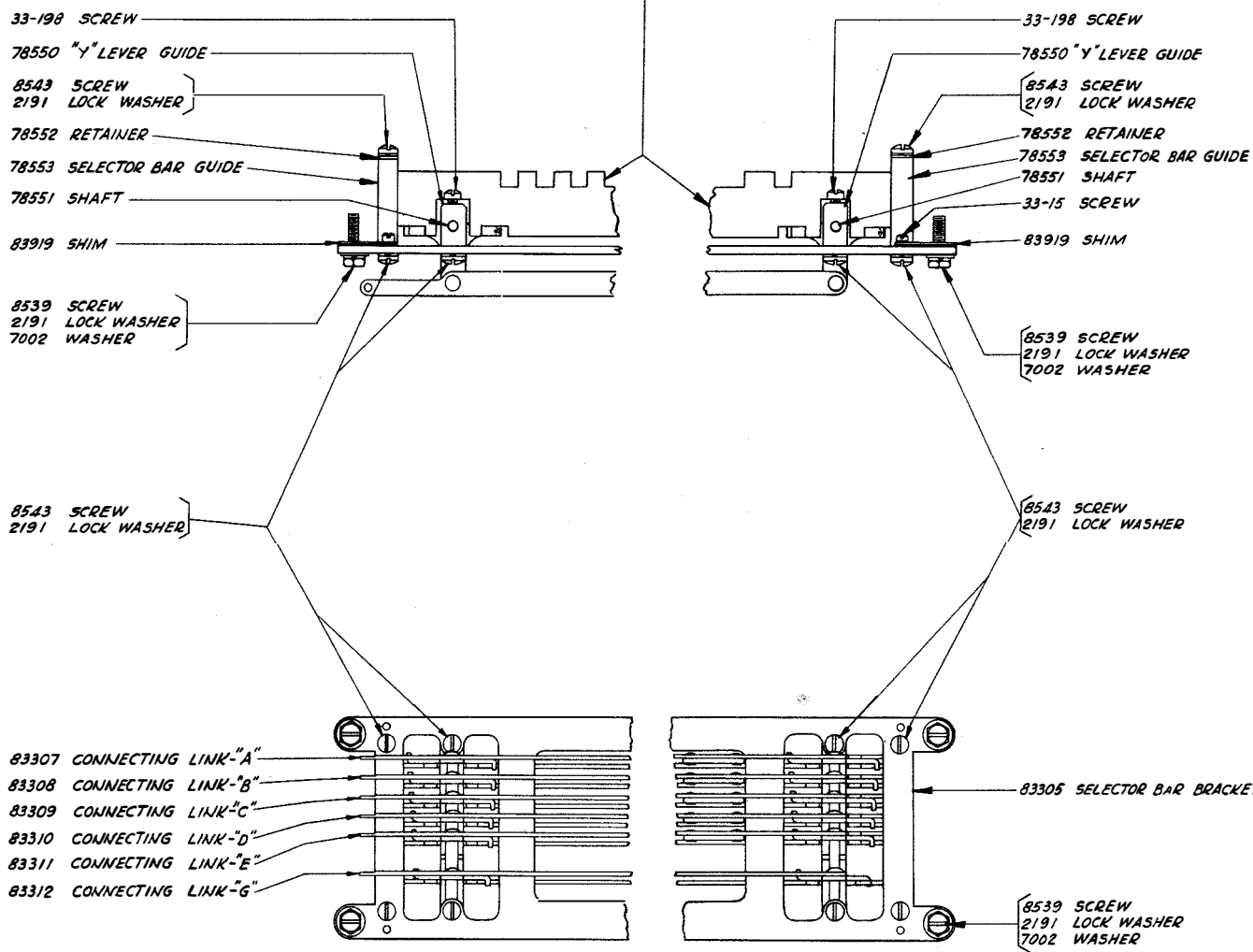
	<u>Page</u>
Cables . . . . .	1,2,13
Cam Sleeve . . . . .	5
Condensers . . . . .	2
Connecting Links . . . . .	3
Contact (Assem.) . . . . .	6
Copyholder - 6" (Assem.) with Accessories . . . . .	15
Cover - Electrical Impulse Counter (Assem.) . . . . .	13
Cover - Perforator Unit . . . . .	15
Cover - Perforator and Counter Unit . . . . .	15
Cover - Printer. . . . .	14
Counter Control Unit . . . . .	4
Electrical Impulse Counter (Assem.) . . . . .	12
Filter Units (Assem.) . . . . .	7
Keyboard Base - Top View . . . . .	1
Keyboard Base - Bottom View . . . . .	2
Key Levers . . . . .	1
Keytops. . . . .	17
Numerical Index. . . . .	18
Punch Block (Assem.) . . . . .	9,11
Punch Unit - Front View. . . . .	8,10
Punch Unit - Top View. . . . .	9,11
Resistors. . . . .	2,4,6
Selector Bars. . . . .	3
Spacer Bar Parts . . . . .	1
Tape Reel Container (Assem.) . . . . .	16
Tape Reel Container Bracket. . . . .	14
Test Key . . . . .	1
Terminal Block (Assem.) . . . . .	1
Transmitter. . . . .	5
Transmitter Shaft. . . . .	5
Universal Bar. . . . .	4

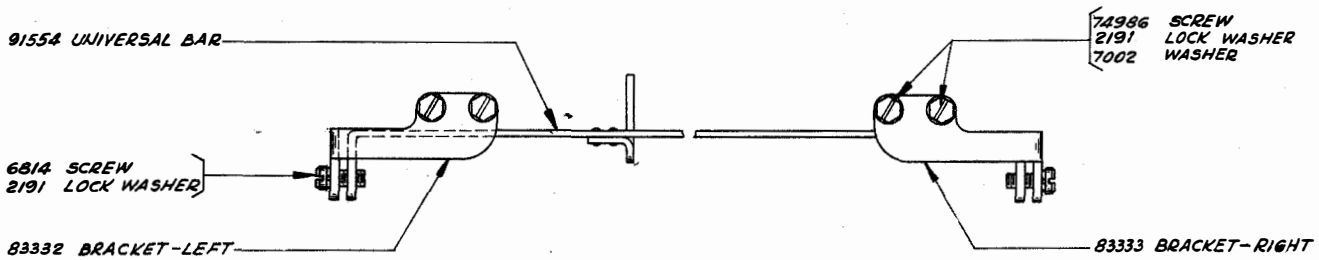
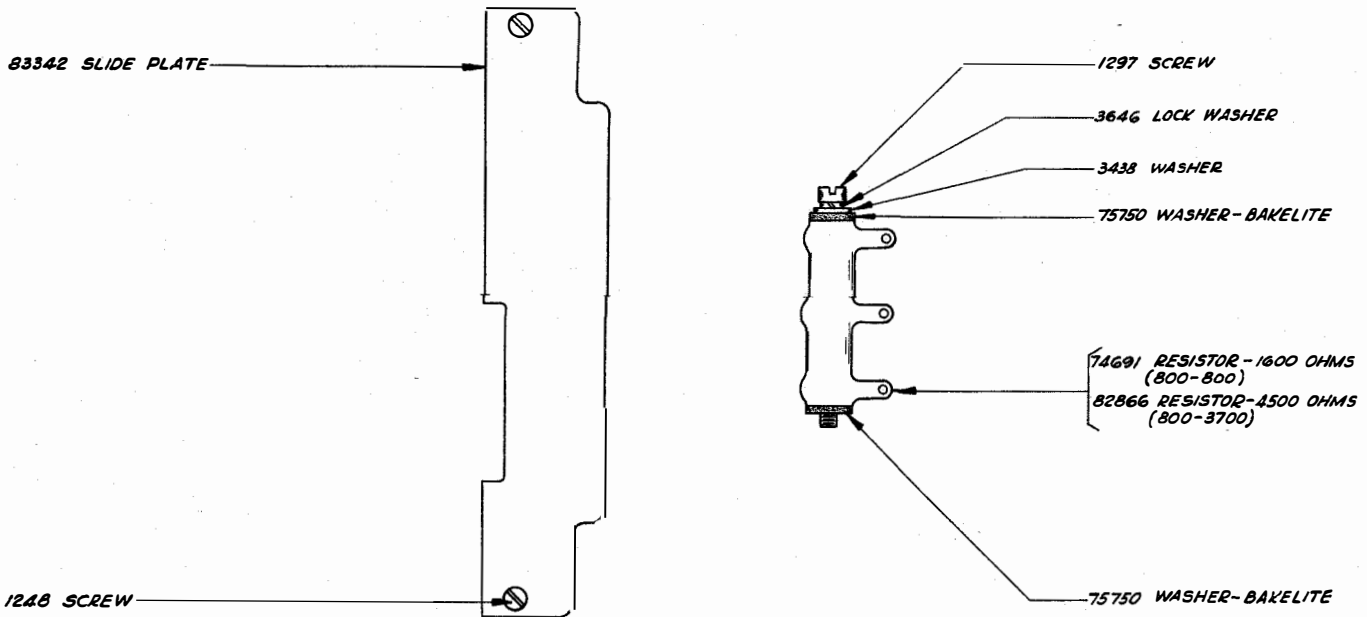
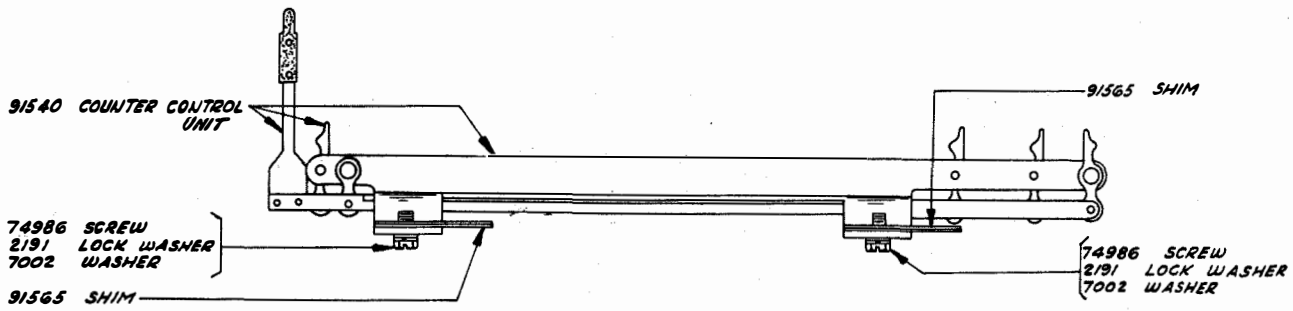




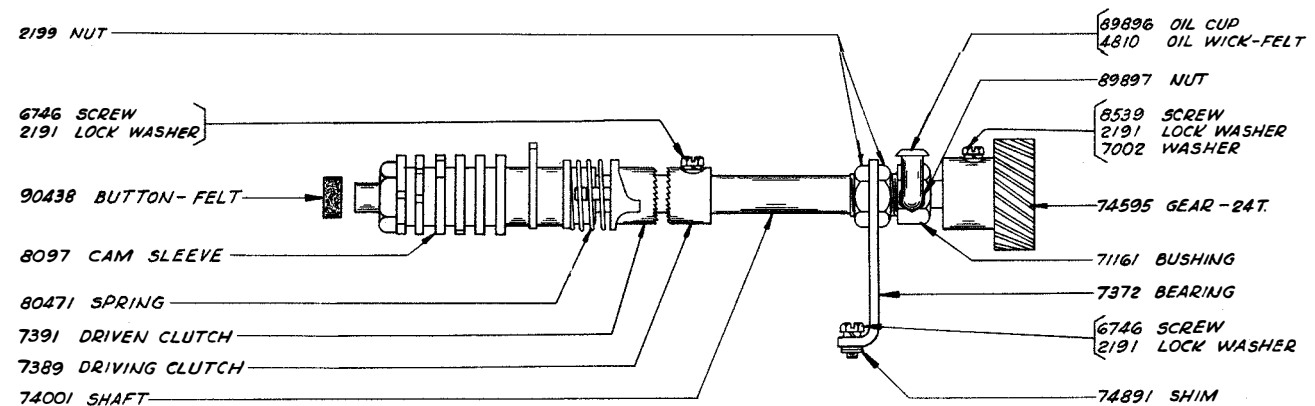
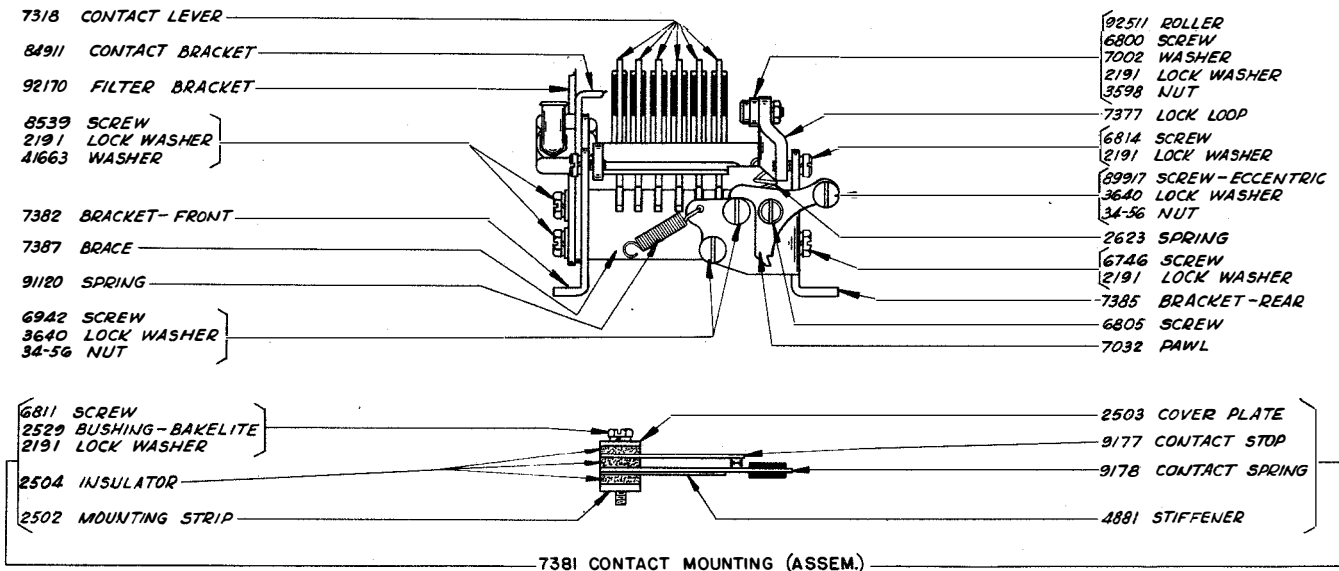
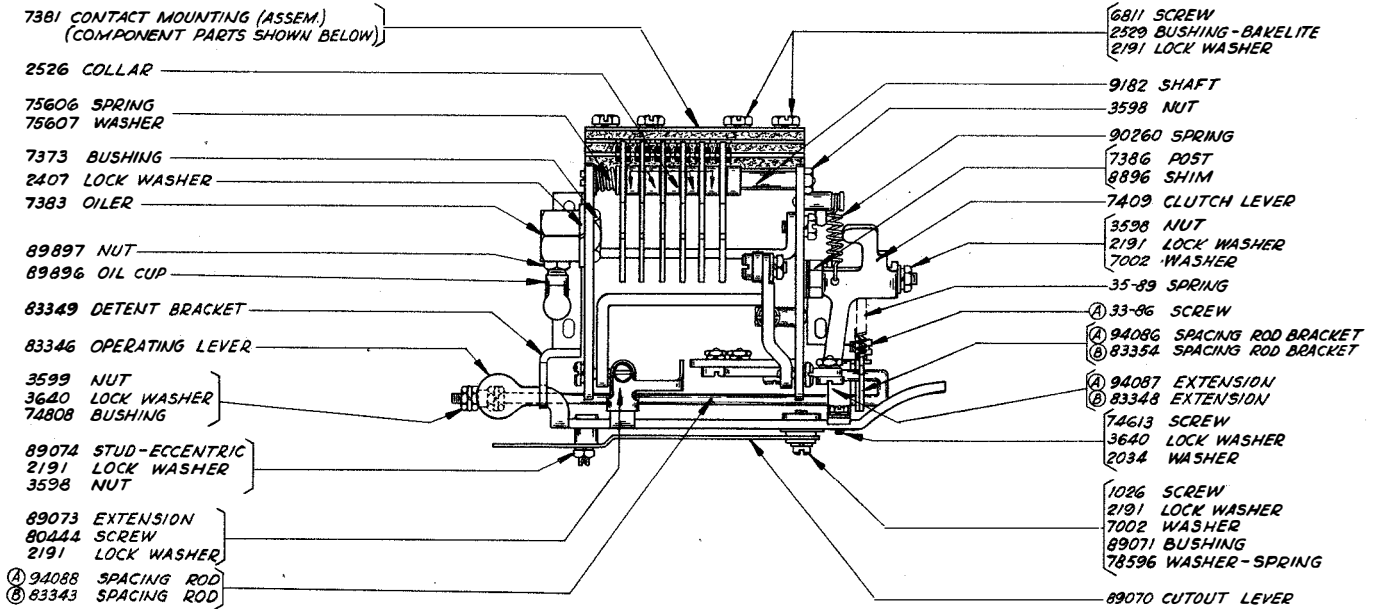


SELECTOR BARS	
BAR STAMPED	CATALOG NUMBER
A-1	83314
A-2	83315
B-1	83316
B-2	83317
C-1	83318
C-2	83319
D-1	83320
D-2	83321
E-1	83322
E-2	83323
G-2	83324

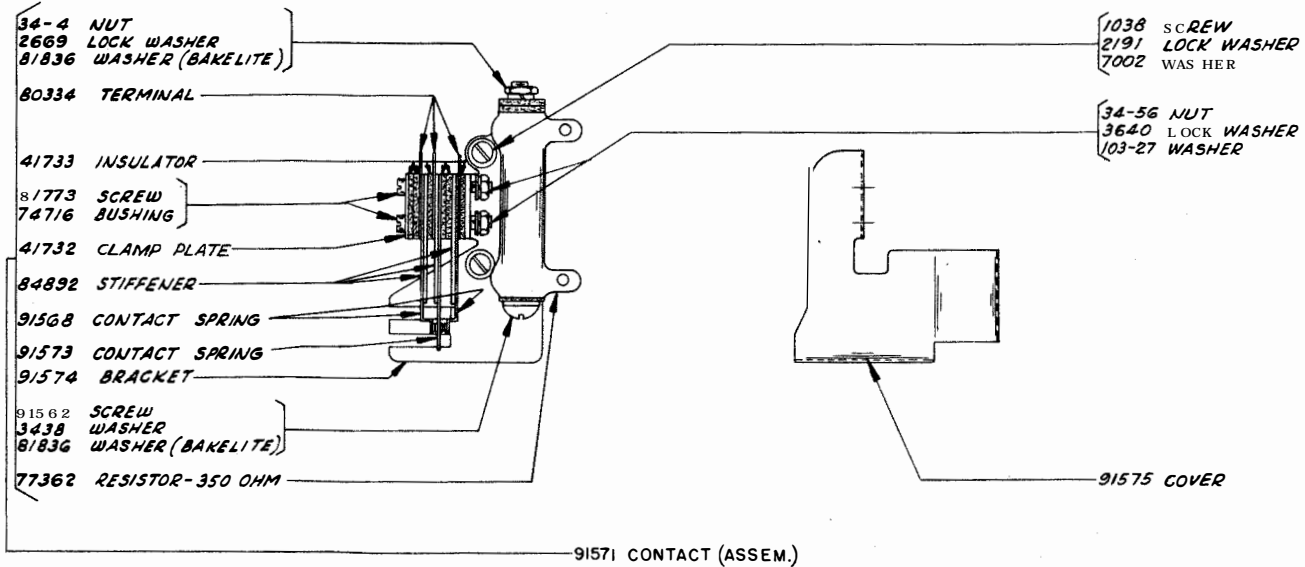
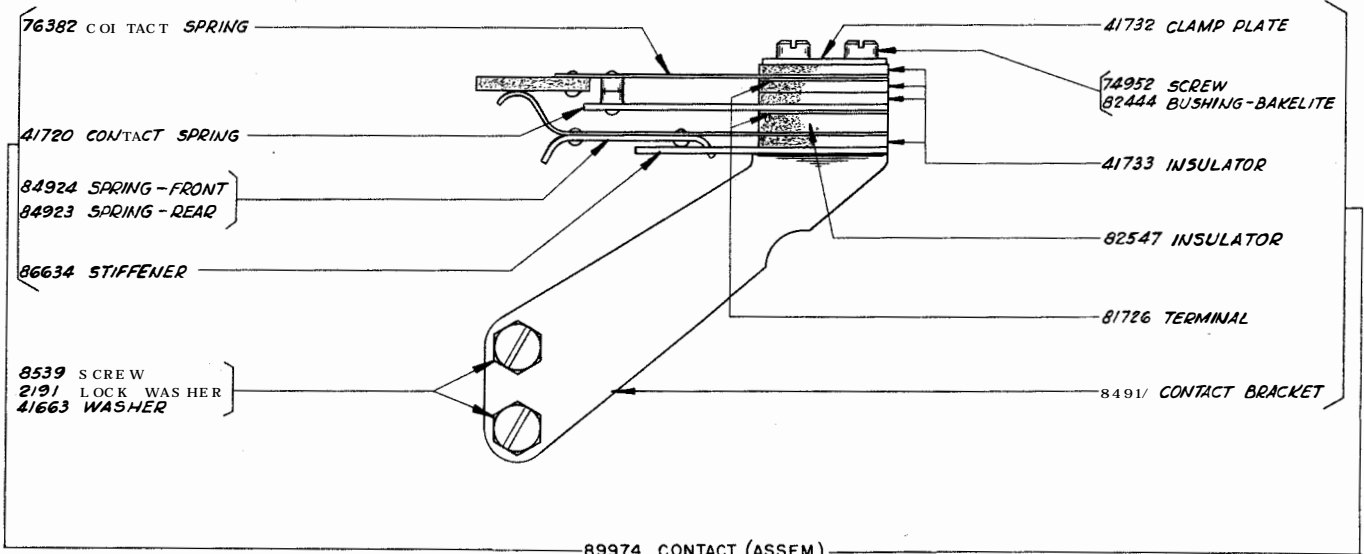
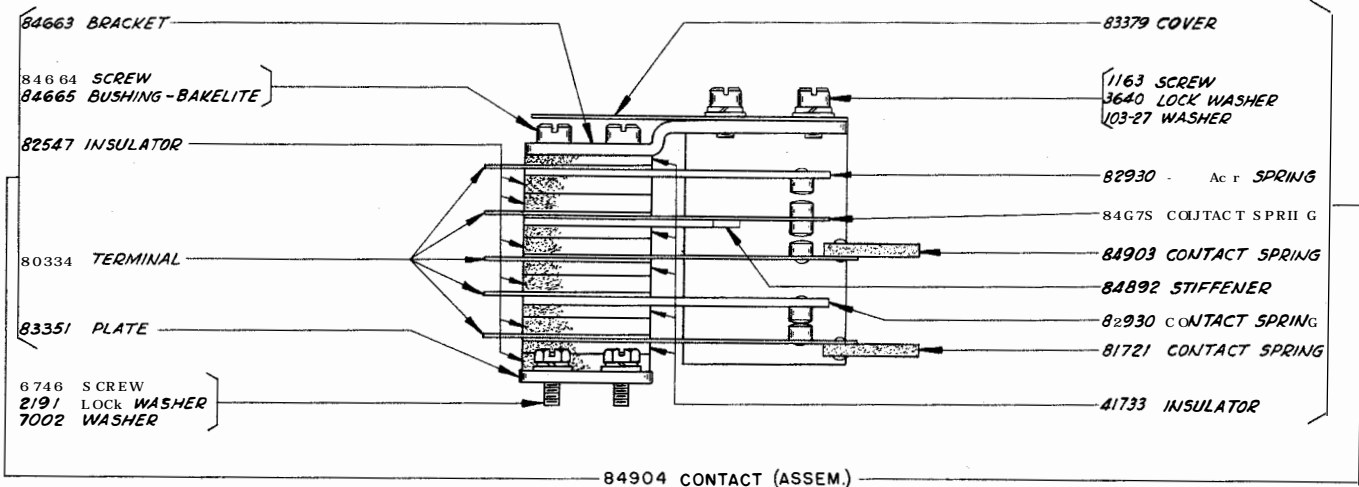


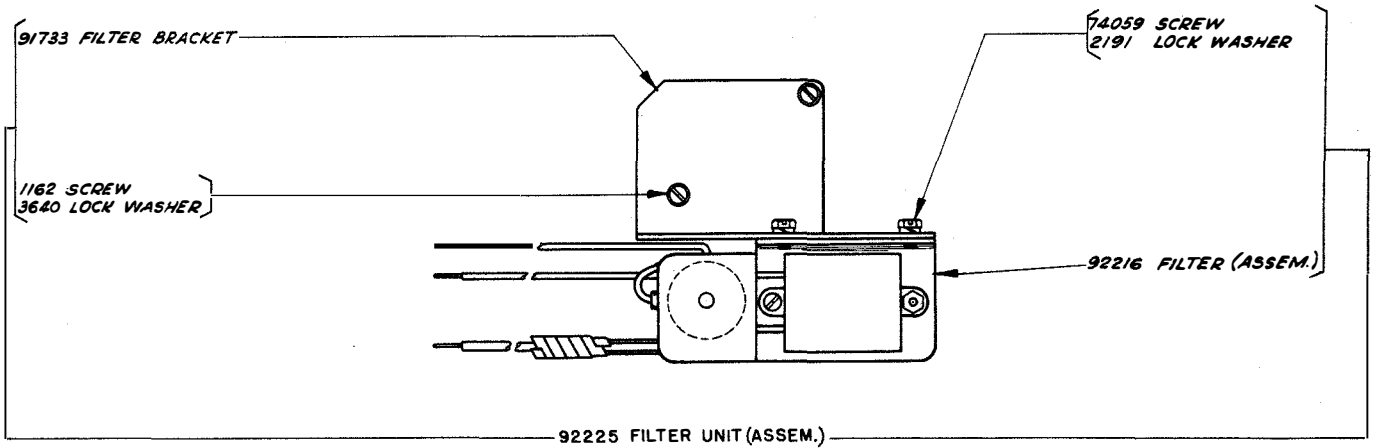
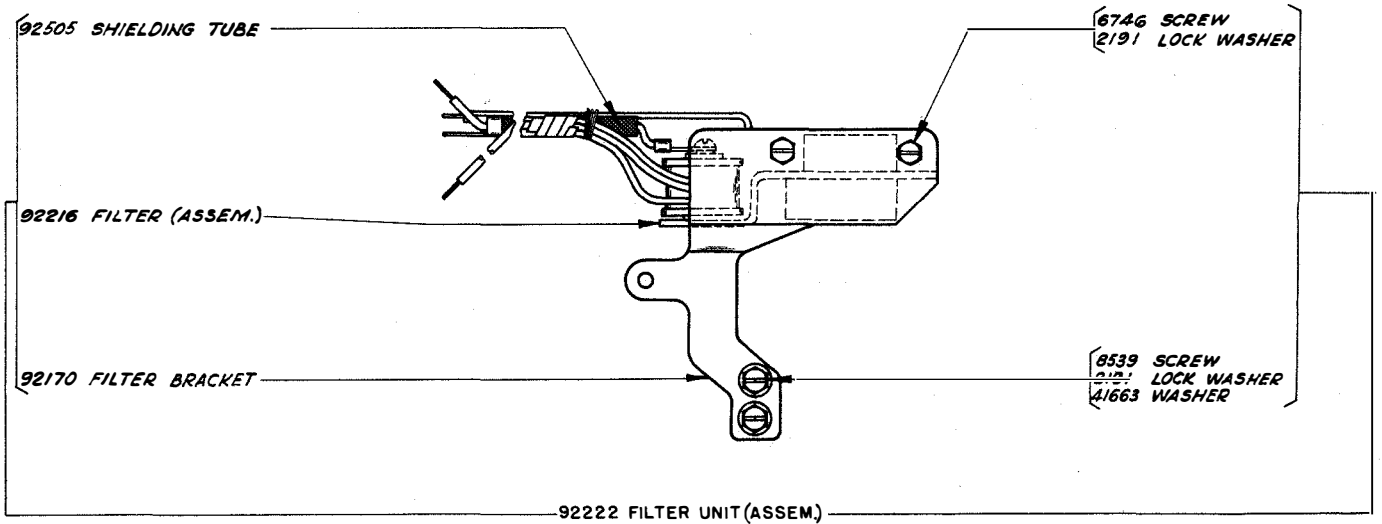
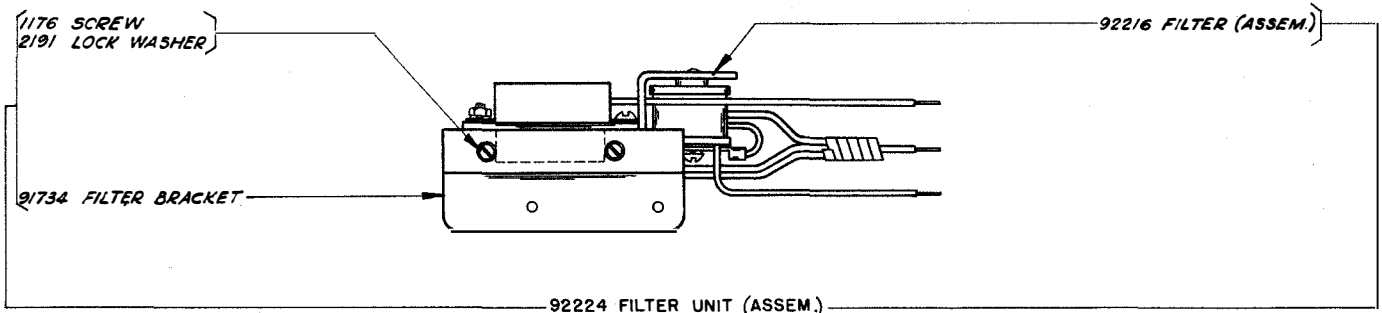


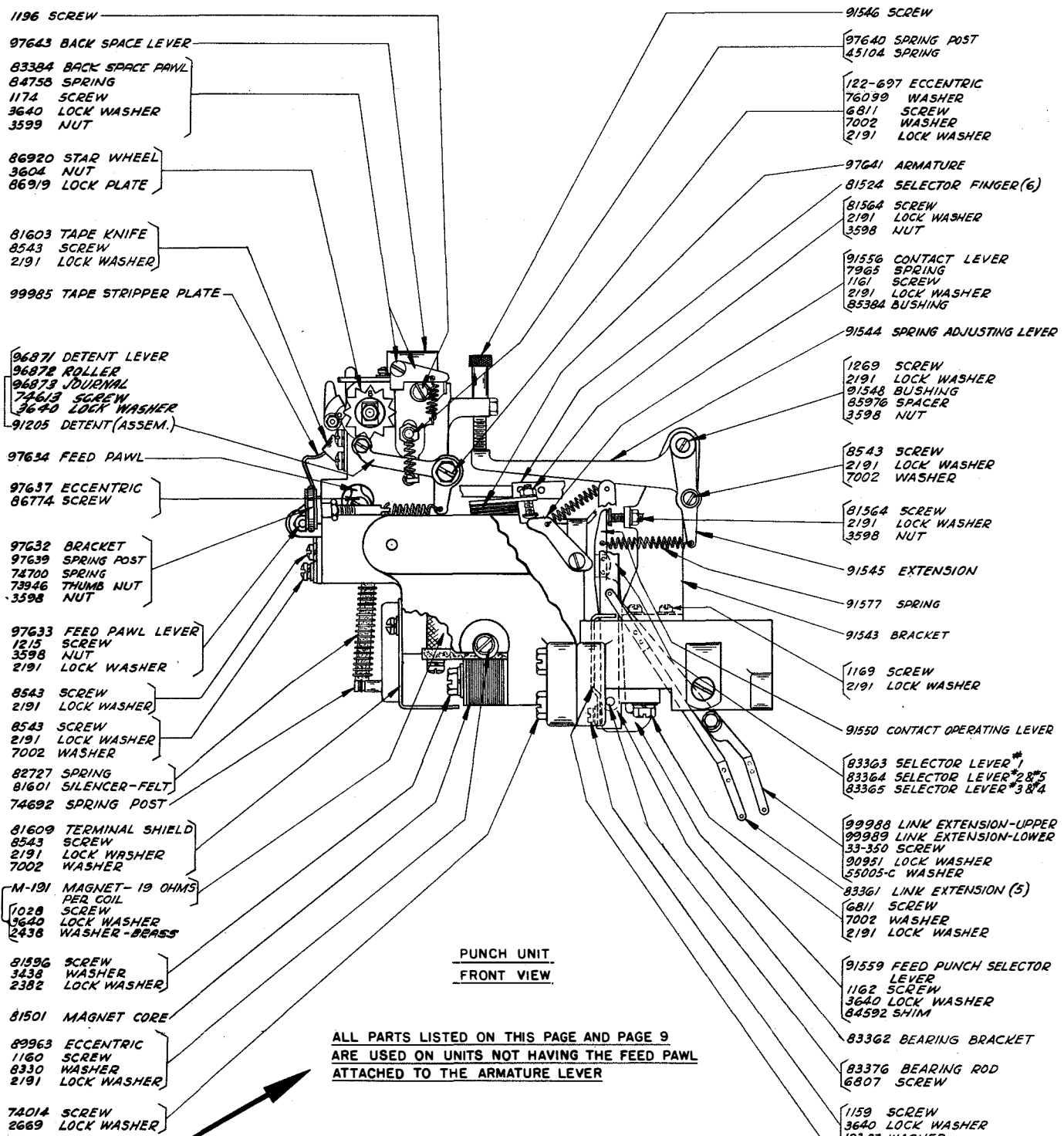




(A) USED ON UNITS NOT HAVING THE FEED PAWL ATTACHED TO THE ARMATURE LEVER (SEE PAGES 8 AND 9)  
(B) USED ON UNITS HAVING THE FEED PAWL ATTACHED TO THE ARMATURE LEVER (SEE PAGES 10 AND 11)





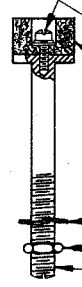
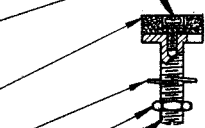


PUNCH UNIT  
FRONT VIEW

ALL PARTS LISTED ON THIS PAGE AND PAGE 9  
ARE USED ON UNITS NOT HAVING THE FEED PAWL  
ATTACHED TO THE ARMATURE LEVER

**NOTE**

- 1028 SCREW
  - 90951 LOCK WASHER
  - 97642 BUMPER-LEATHER
  - 2322 LOCK WASHER
  - 3595 NUT
  - 81531 ADJUSTING SCREW-LEFT
- FOR COUNTER AND PERFORATOR  
CABLE SEE PAGE 13



- 91546 SCREW
- 97640 SPRING POST
- 43104 SPRING
- 122-697 ECCENTRIC
- 76099 WASHER
- 6811 SCREW
- 7002 WASHER
- 2191 LOCK WASHER
- 97641 ARMATURE
- 81524 SELECTOR FINGER(6)
- 81564 SCREW
- 2191 LOCK WASHER
- 3598 NUT
- 91556 CONTACT LEVER
- 7965 SPRING
- 1161 SCREW
- 2191 LOCK WASHER
- 85384 BUSHING
- 91544 SPRING ADJUSTING LEVER
- 1269 SCREW
- 2191 LOCK WASHER
- 81548 BUSHING
- 85976 SPACER
- 3598 NUT
- 8543 SCREW
- 2191 LOCK WASHER
- 7002 WASHER
- 81564 SCREW
- 2191 LOCK WASHER
- 3598 NUT
- 91545 EXTENSION
- 91577 SPRING
- 91543 BRACKET
- 1169 SCREW
- 2191 LOCK WASHER
- 91550 CONTACT OPERATING LEVER
- 83363 SELECTOR LEVER #1
- 83364 SELECTOR LEVER #2 & 5
- 83365 SELECTOR LEVER #3 & 4
- 99988 LINK EXTENSION-UPPER
- 99989 LINK EXTENSION-LOWER
- 33-350 SCREW
- 90951 LOCK WASHER
- 55005-C WASHER
- 83361 LINK EXTENSION (5)
- 6811 SCREW
- 7002 WASHER
- 2191 LOCK WASHER
- 91559 FEED PUNCH SELECTOR LEVER
- 1162 SCREW
- 3640 LOCK WASHER
- 84592 SHIM
- 83362 BEARING BRACKET
- 83376 BEARING ROD
- 6807 SCREW
- 1159 SCREW
- 3640 LOCK WASHER
- 103-27 WASHER
- 91558 SELECTOR LEVER GUIDE
- 1168 SCREW
- 3640 LOCK WASHER
- 2034 WASHER
- 81532 BUMPER-LEATHER
- 2322 LOCK WASHER
- 3595 NUT
- 81530 ADJUSTING SCREW-RIGHT

91733 FILTER BRACKET  
1162 SCREW  
3640 LOCK WASHER

91547 BRACKET  
1169 SCREW  
3598 NUT

86865 CHAD CHUTE

81593 ARMATURE SHAFT  
1026 SCREW

98841 BRACKET

1161 SCREW  
2191 LOCK WASHER

8539 SCREW  
2191 LOCK WASHER

73482 STUD  
81638 COLLAR  
2191 LOCK WASHER  
3598 NUT  
82392 SHIM

81597 BRACKET  
81657 SHIM

89504 PUNCH BLOCK (ASSEM.)  
(COMPONENT PARTS  
SHOWN BELOW)

1269 SCREW  
2191 LOCK WASHER

84023 SPRING

103-27 WASHER  
3640 LOCK WASHER  
3599 NUT

73481 TAPE TENSION LEVER

97631 ADJUSTING BRACKET

1179 SCREW  
2191 LOCK WASHER  
7001 WASHER (UNDER 97631)

1206 SCREW  
3599 NUT  
3640 LOCK WASHER

122-577 FEED ROLL  
81598 BUSHING

97638 GUIDE  
8543 SCREW  
2191 LOCK WASHER  
7002 WASHER

2410 TAPE GUIDE SPRING  
1164 SCREW  
2422 LOCK WASHER

97641 ARMATURE  
84082 SCREW  
2191 LOCK WASHER

74014 SCREW  
2669 LOCK WASHER

1026 SCREW  
2191 LOCK WASHER  
7002 WASHER

91555 CONTACT BRACKET

41733 INSULATOR (6 USED)

41732 CLAMP PLATE

1206 SCREW  
74965 BUSHING-BAKELITE

94248 CABLE CLAMP  
1187 SCREW  
2669 LOCK WASHER

74805 SCREW (2)  
2669 LOCK WASHER

81726 TERMINAL

1169 SCREW  
2191 LOCK WASHER  
7002 WASHER

84767 CONTACT SPRING

84698 CONTACT SPRING

83370 EXTENSION

33-344 SCREW (1)  
2669 LOCK WASHER

91559 FEED PUNCH  
SELECTOR LEVER

94248 CABLE CLAMP  
1187 SCREW  
2669 LOCK WASHER

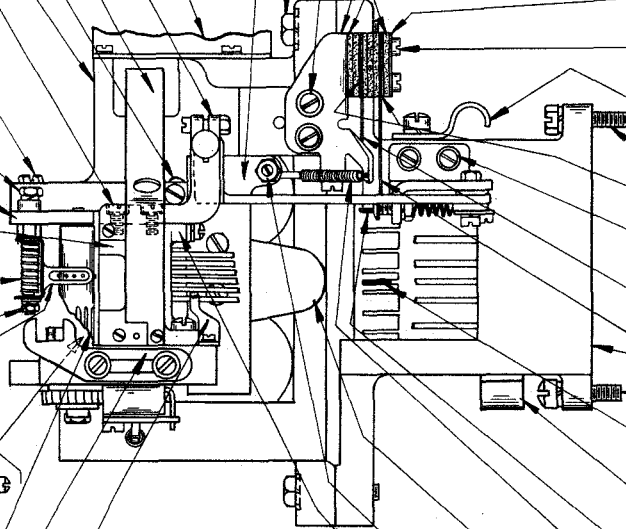
91550 CONTACT OPERATING  
LEVER

7965 SPRING

97635 ARMATURE LEVER  
89499 SELECTOR FINGER GUIDE  
8543 SCREW  
2191 LOCK WASHER

81564 SCREW  
3598 NUT  
2191 LOCK WASHER

99987 RETAINING BRACKET  
1159 SCREW  
3640 LOCK WASHER  
103-27 WASHER



PUNCH UNIT  
TOP VIEW

ALL PARTS LISTED ON THIS PAGE AND PAGE 8  
ARE USED ON UNITS NOT HAVING THE FEED PAWL  
ATTACHED TO THE ARMATURE LEVER

NOTE

81793 GUIDE AND DIE PLATES  
(FITTED TOGETHER)

5740 SCREW

81515 PUNCH HOLDER

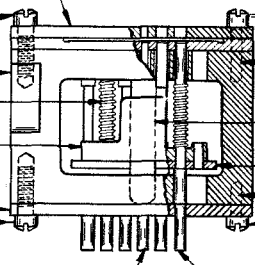
35-116 SPRING

75121 SHEDDER

77984 GUIDE PLATE

5740 SCREW

89500 FEED PUNCH-SMALL



5740 SCREW

122-86 DOWEL

122-80 SHEDDER GUIDE

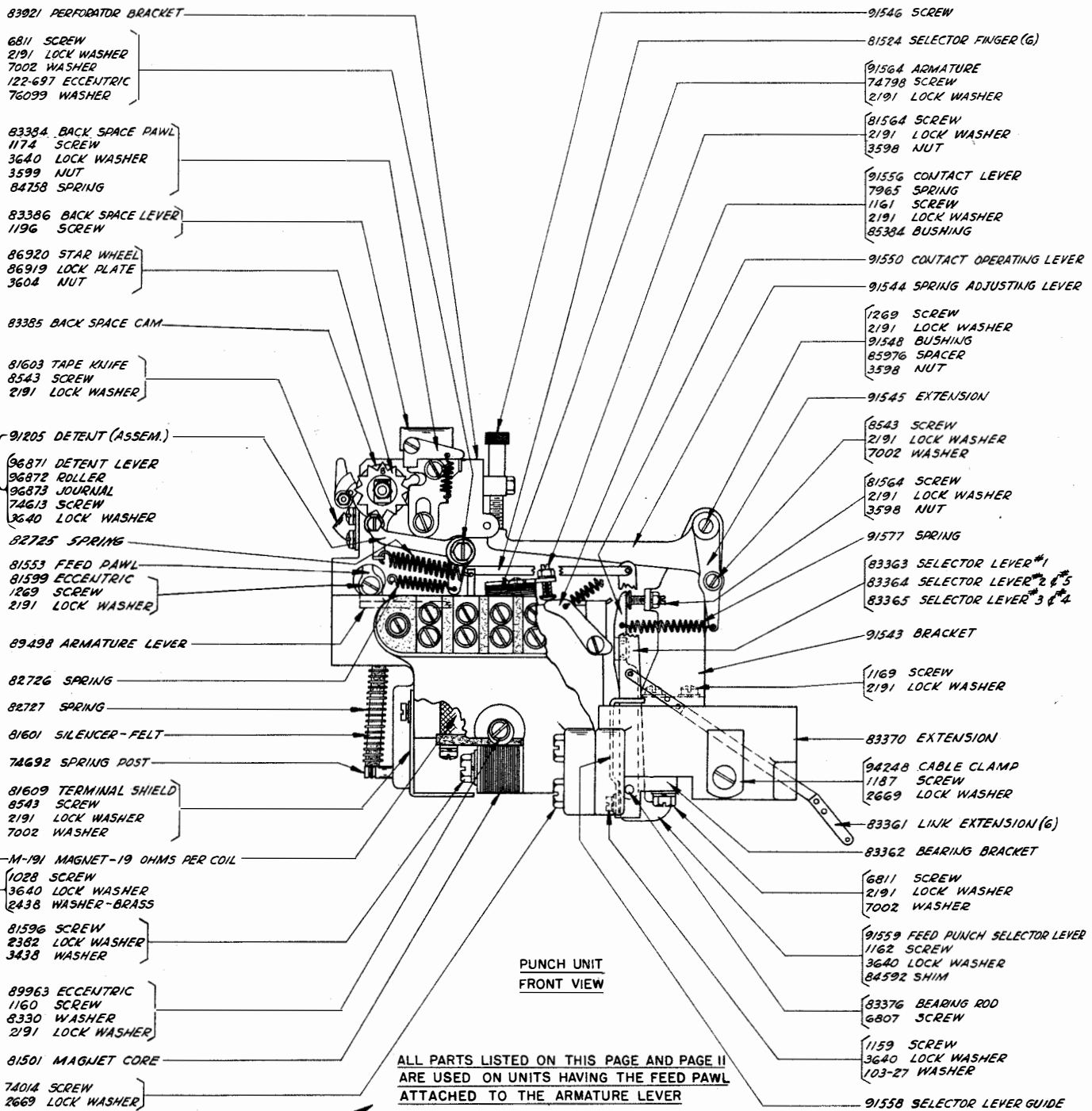
77986 WEARING STRIP

122-84 DOWEL

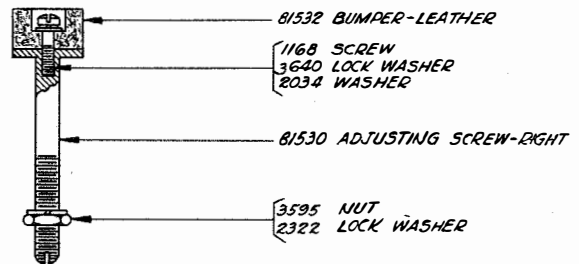
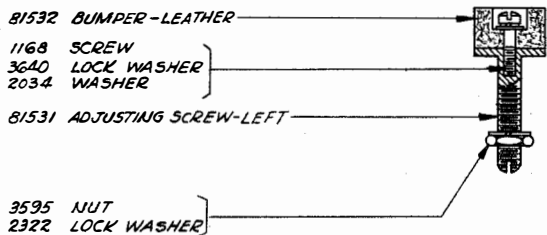
5740 SCREW

122-365 CODE PUNCH-LARGE

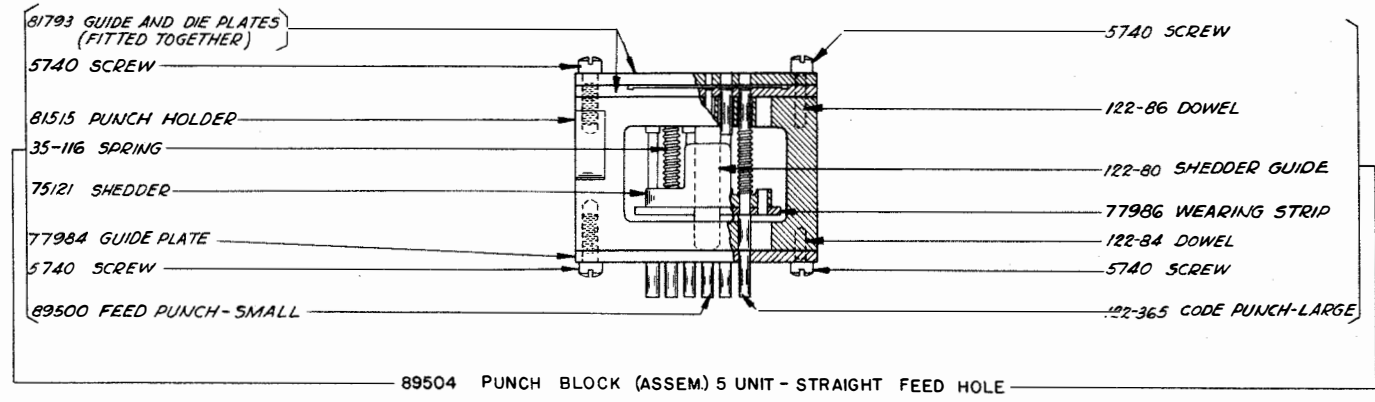
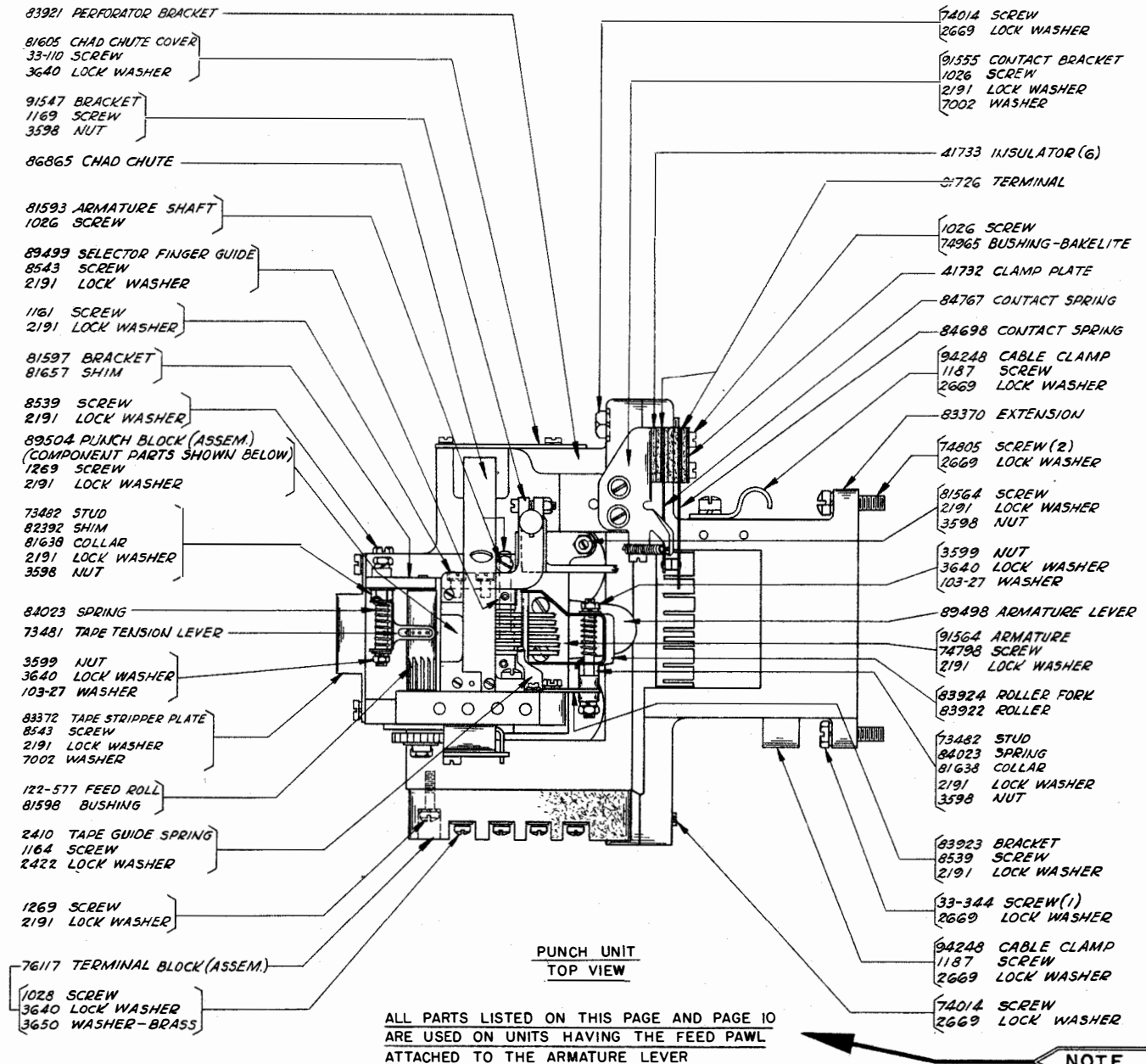
89504 PUNCH BLOCK (ASSEM.) 5 UNIT-STRAIGHT FEED HOLE

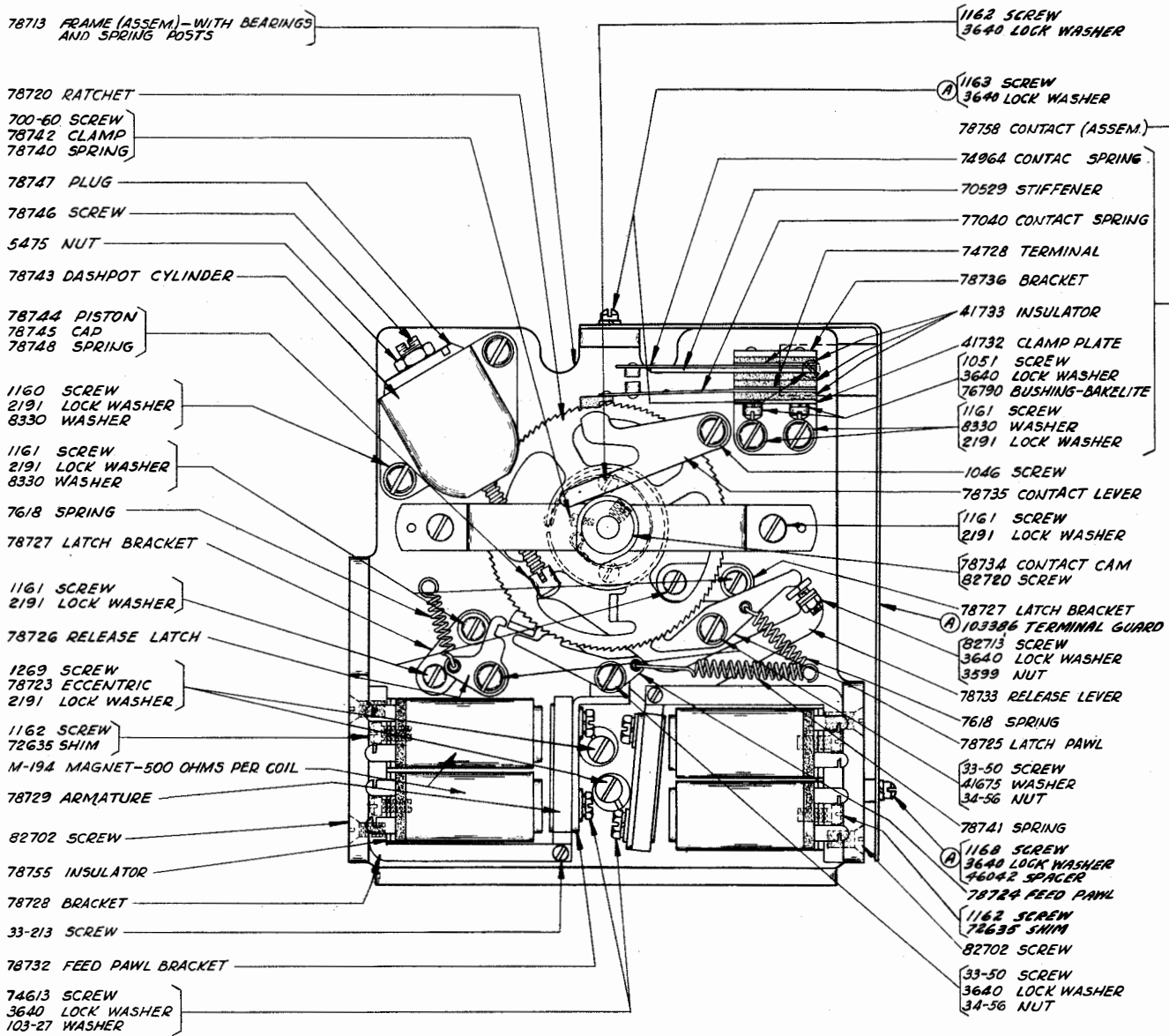


**NOTE**



FOR PERFORATOR CABLE SEE PAGE 13

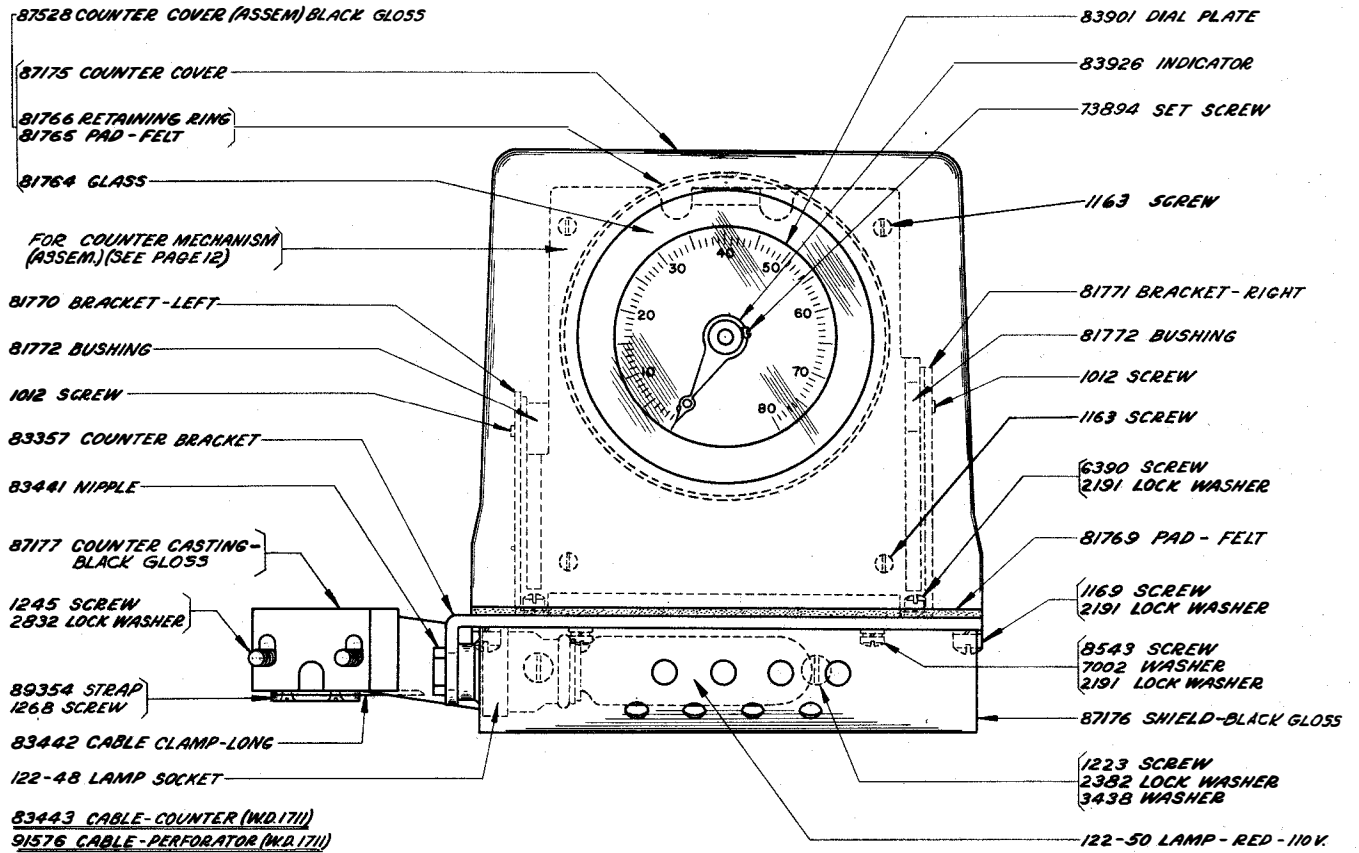




83437 COUNTER MECHANISM (ASSEM.)  
(EXCLUDES PARTS MARKED (A))

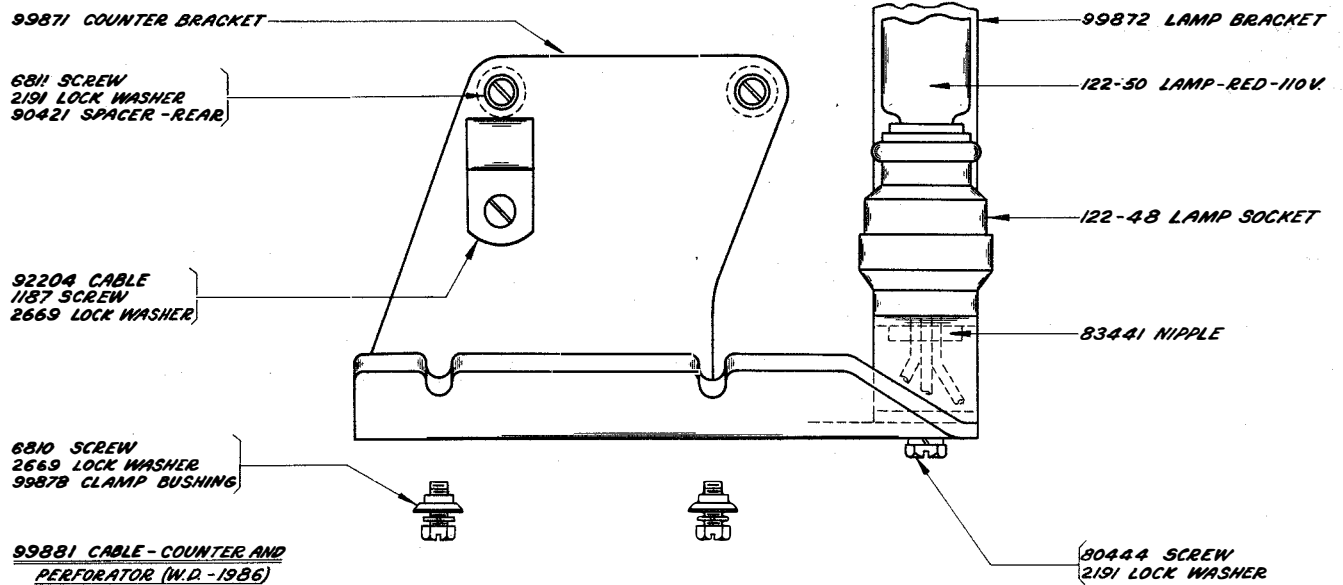
(A) PARTS ARE USED ONLY WHEN COUNTER UNIT IS MOUNTED ON THE LEFT HAND SIDE.





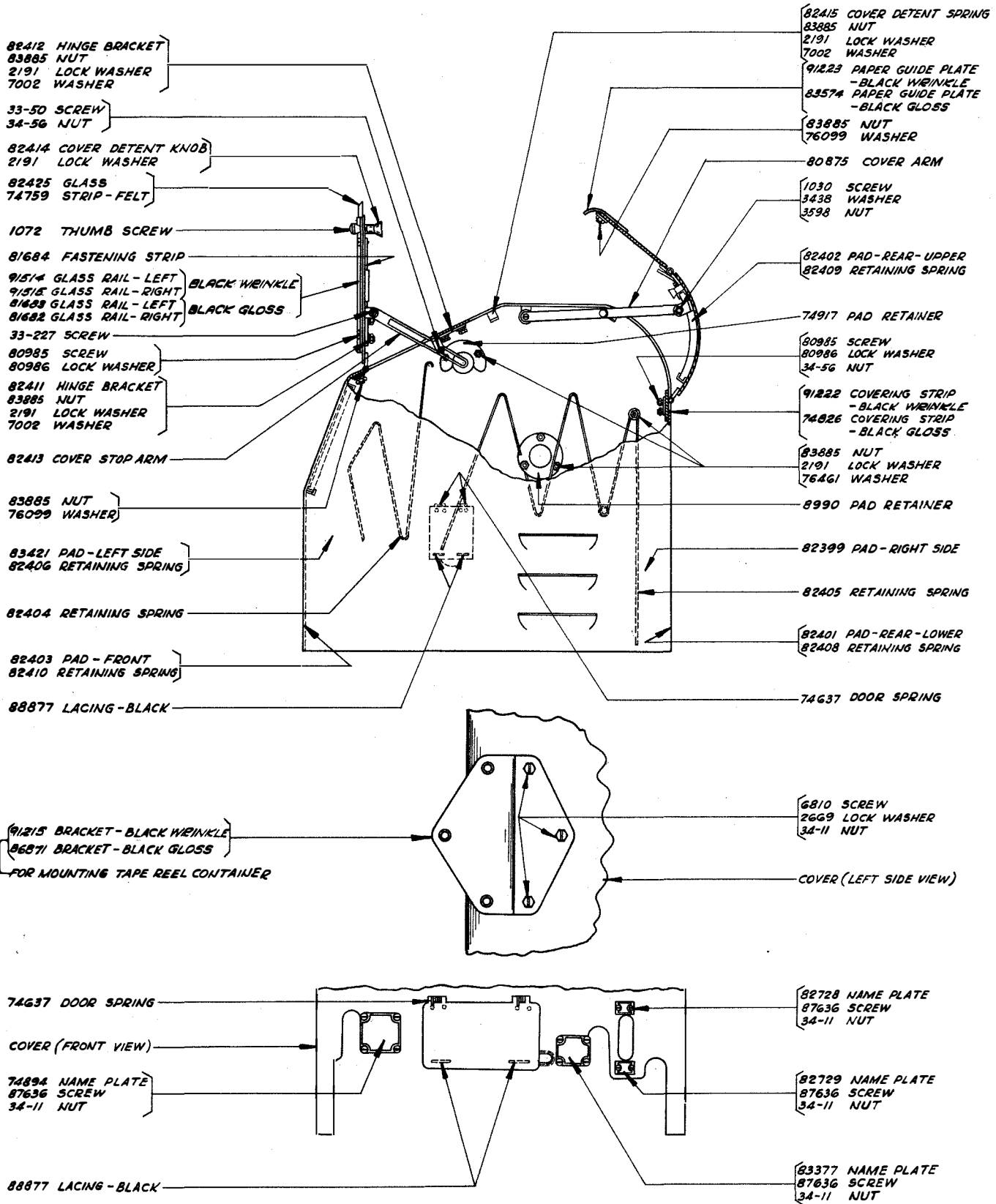
USED ONLY WHEN COUNTER UNIT IS MOUNTED ON THE RIGHT HAND SIDE

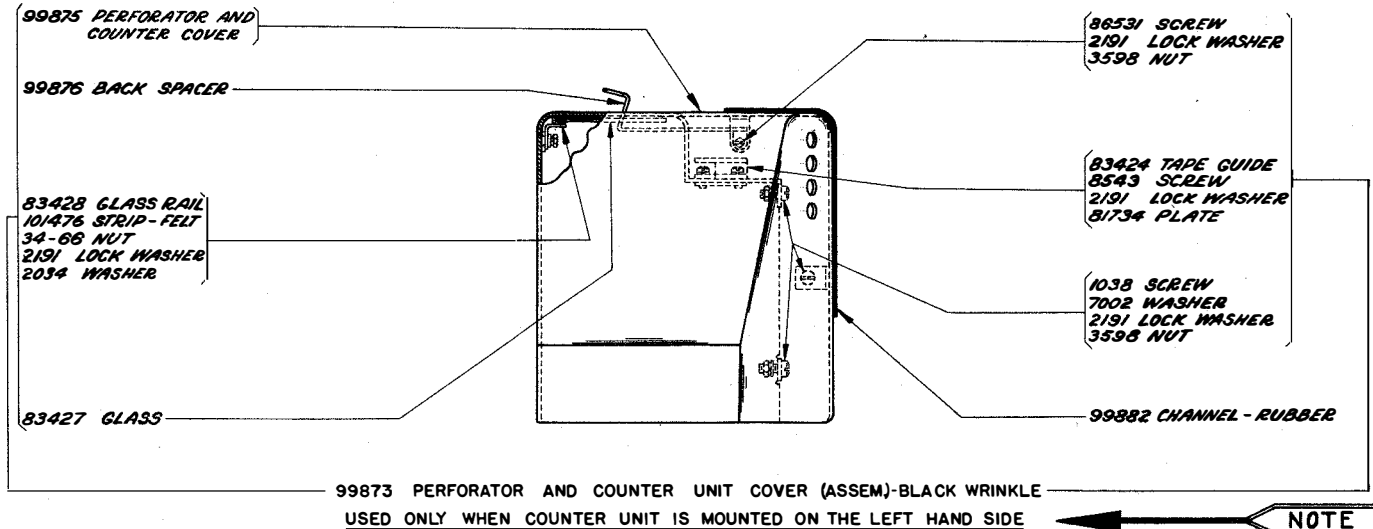
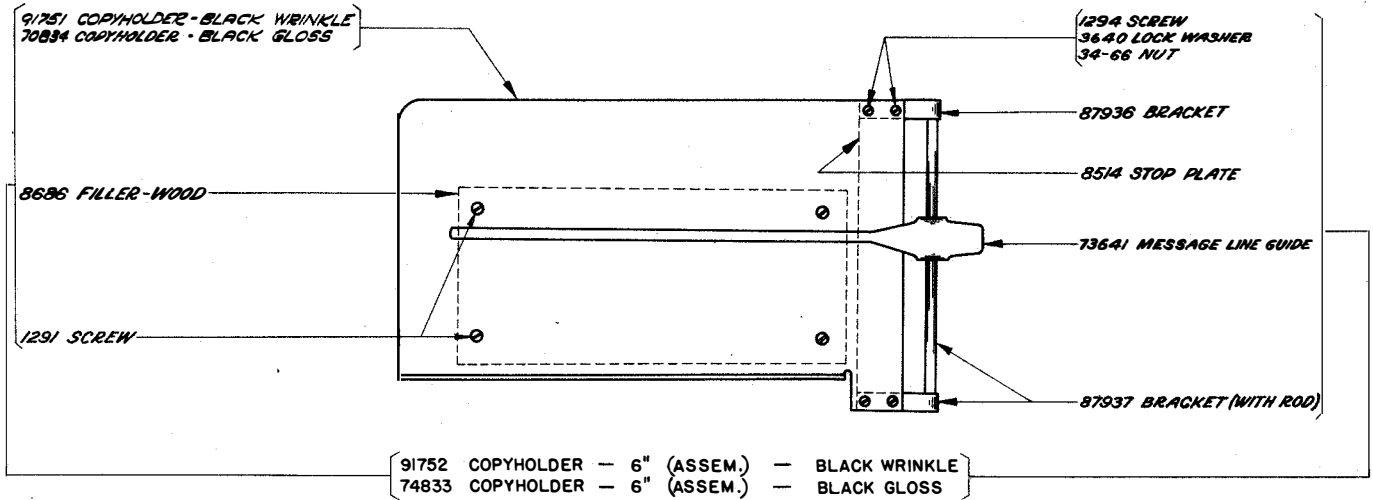
NOTE



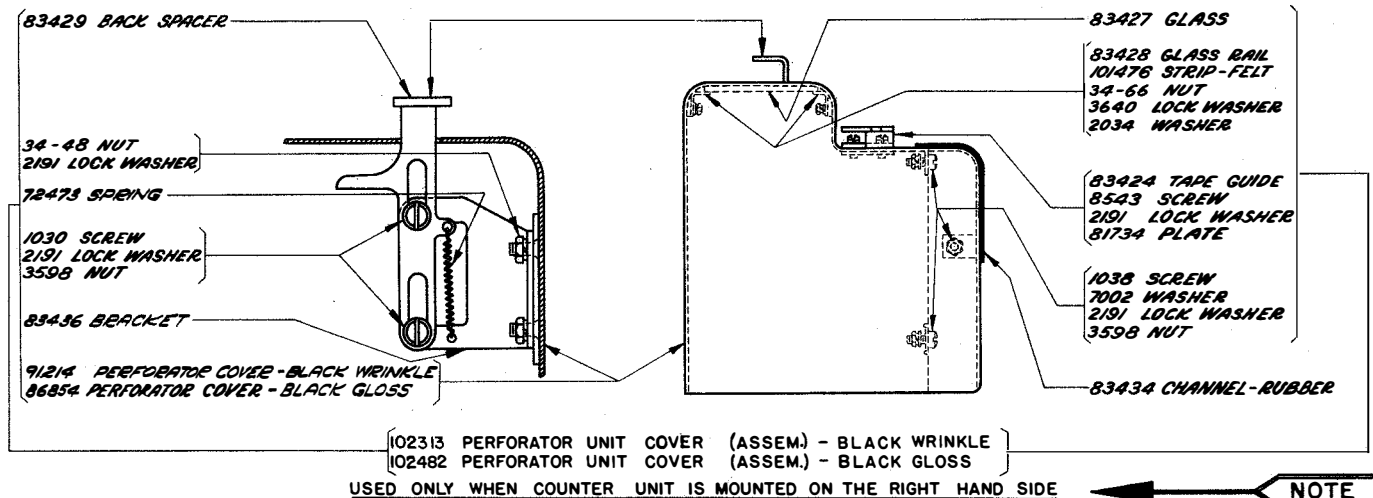
USED ONLY WHEN COUNTER UNIT IS MOUNTED ON THE LEFT HAND SIDE

NOTE

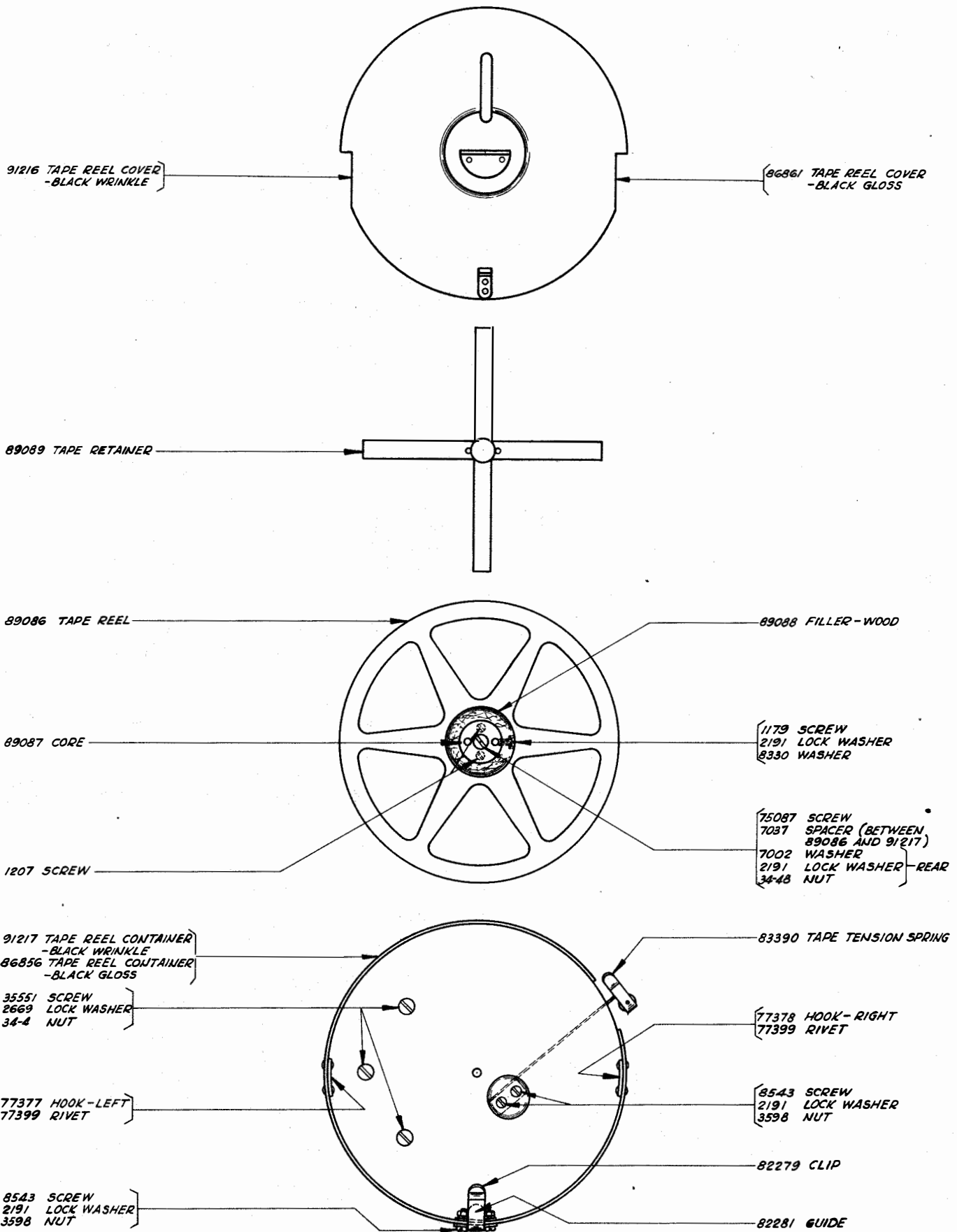




NOTE



NOTE



101435 TAPE REEL CONTAINER (ASSEM.) BLACK WRINKLE  
102485 TAPE REEL CONTAINER (ASSEM.) BLACK GLOSS  
(INCLUDES ALL PARTS ON THIS PAGE)

Sets of Spring Cushion Keytops

<u>Keytop Description</u>	89410 <u>(Weather)</u>	78932 <u>(Communication)</u>	91743 <u>(Communication with "H" Stop)</u>
A ↑	89414		
A -		78946	78946
B ⊕	89425		
B ?		78947	78947
C ○	89423		
C :		78948	78948
D ↗	89415		
D \$		78949	78949
E 3	78950	78950	78950
F →	89416		
F !		78951	78951
G ↘	89417		
G &		78952	78952
H ↓	89418		
H ≠		78953	
H Stop			82607
I 8	78954	78954	78954
J ↗	89419		
J ↓		78955	78955
K ←	89420		
K (		78956	78956
L ↗	89421		
L )		78957	78957
M .	78958	78958	78958
N ⊕	89426		
N ,		78959	78959
O 9	78960	78960	78960
P 0	78961	78961	78961
Q 1	78962	78962	78962
R 4	78963	78963	78963
S Bell	78980	78980	78980
T 5	78964	78964	78964
U 7	78965	78965	78965
V ○	89424		
V ;		78966	78966
W 2	78967	78967	78967
X /	78968	78968	78968
Y 6	78969	78969	78969
Z +	89422		
Z v		78970	78970
-	89413		
Figs.	78972	78972	78972
Ltrs.	78973	78973	78973
Car. Ret.	78976	78976	78976
Line Feed	78978	78978	78978
Blank		78971	78971

NUMERICAL INDEX

M-191	Magnet - 19 Ohms, 8,10	2504	Insulator, 5	70314	Washer, 2
M-194	Magnet - 500 Ohms, 12	2526	Collar, 5	70319	Upstop - Leather, 2
33-15	Screw (2-56 x 1/8), 3	2529	Bushing - Bakelite, 5	70324	Bearing, 1
33-50	Screw (4-40 Shoulder), 12, 14	2565	Key Lever Spring, 2	70529	Stiffener, 12
33-86	Screw (4-40 x 1/8), 5	2623	Spring, 5	70834	Copyholder - Black Gloss, 15
33-110	Screw (4-40 x 3/16), 11	2669	Lock Washer, 1,2,6,8,9,10, 11,13,14,16	71161	Bushing, 5
33-198	Screw (6-40 x 1/4), 3	2832	Lock Washer, 13	72472	Shim, 1
33-213	Screw (3-56 Pilot), 12	2922	Nut (3/16-24 Square), 2	72473	Spring, 15
33-227	Screw (4-40 Shoulder), 14	3438	Washer, 4,6,8,10,13,14	72501	Shaft, 1
33-344	Screw (10-32 x 3/4), 9,11	3595	Nut (1/4-32 Hex.), 8,10	72635	Shim, 12
33-350	Screw (4-40 x 3/16), 8	3598	Nut (6-40 Hex.), 1,2,5,8, 9,10,11,14,15,16	73481	Tape Tension Lever, 9, 11
34-4	Nut (10-32 Hex.), 6,16	3599	Nut (4-40 Hex.), 5,8,9,10, 11,12	73482	Stud, 9,11
34-11	Nut (2-56 Hex.), 14	3604	Nut (5/32-40 Hex.), 8,10	73641	Message Line Guide, 15
34-48	Nut (6-32 Hex.), 1,15,16	3606	Nut (6-40 Hex.), 1	73894	Screw (6-40 x 1/8 Set), 13
34-56	Nut (4-40 Hex.), 5,6,12,14	3640	Lock Washer, 1,5 to 12,15	73946	Nut (6-40 Thumb), 8
34-66	Nut (4-36 Hex.), 15	3646	Lock Washer, 4	74001	Shaft, 5
35-89	Spring, 5	3650	Washer - Brass, 11	74014	Screw (10-32 x 3/4), 8, 9,10,11
35-116	Spring, 9,11	4810	Oil Wick - Felt, 5	74059	Screw (6-40 x 7/32), 7
103-27	Washer, 6,8,9,10,11,12	4881	S6iffener, 5	74525	Screw (1/4-32 Thumb), 1
122-48	Lamp Socket, 13	5475	Nut (3/16-40 Hex.), 12	74529	Bracket, 1
122-50	Lamp - Red - 110 V., 13	5740	Screw (2-56 x 1/4), 9,11	74569	Terminal Block, 1
122-80	Shedder Guide, 9,11	6390	Screw (6-40 x 3/16), 13	74572	Cable - Keyboard, 1
122-84	Dowel, 9,11	6746	Screw (6-40 x 5/16), 1,2, 5,6,7	74589	Terminal Block (Assem.), 1
122-86	Dowel, 9,11	6800	Screw (6-40 Shoulder), 5	74594	Retaining Ring, 1
122-365	Code Punch - Large, 9,11	6805	Screw (6-40 Shoulder), 5	74595	Gear - 24T, 5
122-577	Feed Roll, 9,11	6807	Screw (6-40 x 3/16 Set), 8,10	74613	Screw (4-40 x 1/4), 5, 8,10,12
122-697	Eccentric, 8,10	6810	Screw (10-32 x 3/8), 13,14	74637	Door Spring, 14
700-60	Screw (0-80 x 1/8), 12	6811	Screw (6-40 x 5/8), 5,8,10, 13	74691	Resistor - 1600 Ohms (800-800), 4
1012	Screw (6-40 Shoulder), 13	6814	Screw (6-40 Pilot), 4,5	74692	Spring Post, 8,10
1026	Screw (6-40 x 3/8), 5,9,11	6942	Screw (4-40 x 9/32 Eccentric), 5	74700	Spring, 8
1028	Screw (4-40 x 1/4), 8,10,11	7001	Washer, 9	74716	Bushing, 6
1030	Screw (6-40 Shoulder), 14, 15	7002	Washer, 1 to 6, 8 to 11, 13 to 16	74728	Terminal, 12
1038	Screw (6-40 x 9/32), 1,2, 6,15	7032	Pawl, 5	74751	Trip-off Pawl, 1
1046	Screw (6-40 Shoulder), 12	7037	Spacer, 16	74759	Strip - Felt, 14
1051	Screw (4-40 x 1/2), 12	7318	Contact Lever, 5	74762	Key Lever - Lower, 1
1072	Screw (6-40 Thumb), 14	7334	Post, 1	74798	Screw (6-40 x 31/64), 10,11
1159	Screw (4-40 x 3/8), 8,9,10	7372	Bearing, 5	74805	Screw (10-32 x 3/4), 9,11
1160	Screw (6-40 x 5/16), 8,10, 12	7373	Bushing, 5	74808	Bushing, 5
1161	Screw (6-40 x 1/4), 8,9,10, 11,12	7377	Lock Loop, 5	74826	Covering Strip - Black Gloss, 14
1162	Screw (4-40 x 1/4), 7,8,9, 10,12	7381	Contact Mounting (Assem.), 5	74833	Copyholder - 6" (Assem.) Black Gloss, 15
1163	Screw (4-40 x 3/16), 1,6, 12,13	7382	Bracket - Front, 5	74891	Shim, 1,5
1164	Screw (2-56 x 3/16), 9,11	7383	Oiler, 5	74892	Shim, 1
1168	Screw (4-40 x 5/16), 8,10, 12	7385	Bracket - Rear, 5	74894	Name Plate, 14
1169	Screw (6-40 x 7/16), 1,8,9, 10,11,13	7386	Post, 5	74917	Pad Retainer, 14
1174	Screw (4-40 Shoulder), 8,10	7387	Brace, 5	74952	Screw (4-40 x 5/8), 6
1176	Screw (6-40 x 3/16), 7	7389	Driving Clutch, 5	74964	Contact Spring, 12
1179	Screw (6-40 x 5/8), 9,16	7391	Driven Clutch, 5	74965	Bushing - Bakelite, 9, 11
1187	Screw (10-32 x 1/4), 1,2,9, 10,11,13	7409	Clutch Lever, 5	74986	Screw (6-40 x 13/32), 1,2,4
1196	Screw (6-40 Shoulder), 8,10	7618	Spring, 12	75087	Screw (6-32 Shoulder), 16
1206	Screw (4-40 x 9/16), 9	7965	Spring, 8,9,10	75121	Shedder, 9,11
1207	Screw (4-36 x 5/16 Flat Head), 16	8097	Spring, 8,9,10	75437	Test Key, 1
1215	Screw (6-40 Shoulder), 8	8330	Cam Sleeve, 5	75606	Spring, 5
1223	Screw (10-32 x 1/2), 13	8514	Washer, 1,8,10,12,16	75607	Washer, 5
1245	Screw (10-32 x 1), 13	8539	Stop Plate, 15	75750	Washer - Bakelite, 4
1248	Screw (6-40 x 1/2), 2,4	8543	Screw (6-40 x 1/2), 2,3,5,6, 7,9,11	76099	Washer, 8,10,14
1268	Screw (.138-40 x 5/16), 2,13	8686	Screw (6-40 x 1/4), 3,8,9,10, 11,13,15,16	76117	Terminal Block (Assem.), 11
1269	Screw (6-40 x 1/2), 8,9,10, 11,12	8896	Filler - Wood, 15	76382	Contact Spring, 6
1291	Screw (6-32 x 3/4), 15	8990	Shim, 5	76461	Washer, 14
1294	Screw (4-36 x 1/2), 15	9177	Pad Retainer, 14	76790	Bushing - Bakelite, 12
1297	Screw (6-40 x 2-7/16), 4	9178	Contact Stop, 5	77040	Contact Spring, 12
2034	Washer, 5,8,10,15	9182	Contact Spring, 5	77362	Resistor - 350 Ohms, 6
2191	Lock Washer, 1 to 16	9209	Shaft, 5	77377	Hook - Left, 16
2199	Nut (7/16-32 Hex.), 5	9210	Key Lever - Center, 1	77378	Hook - Right, 16
2322	Lock Washer, 8,10	35551	Key Lever - Upper, 1	77399	Rivet, 16
2382	Lock Washer, 8,10,13	36273	Screw (10-32 x 3/8), 16	77698	Bolt, 2
2407	Lock Washer, 5	41663	Washer, 1	77876	Post, 1
2410	Tape Guide Spring, 9,11	41675	Washer, 5,6,7	77984	Guide Plate, 9,11
2422	Lock Washer, 9,11	41720	Washer, 12	77986	Wearing Strip, 9,11
2438	Washer - Brass, 8,10	41732	Contact Spring, 6	78011	Condenser - 1 M.F., 2
2502	Mounting Strip, 5	41733	Clamp Plate, 6,9,11,12		
2503	Cover Plate, 5	41733	Insulator, 6,9,11,12		
		45104	Spring, 8		
		46042	Spacer, 12		
		55005-0	Washer, 8		

78075	Screw (6-40 Shoulder), 1	81593	Armature Shaft, 9,11	83320	Selector Bar "D-1", 3
78550	"Y" Lever Guide, 3	81596	Screw (10-32 x 1-3/8), 8,10	83321	Selector Bar "D-2", 3
78551	Shaft, 3			83322	Selector Bar "E-1", 3
78552	Retainer, 3	81597	Bracket, 9,11	83323	Selector Bar "E-2", 3
78553	Selector Bar Guide, 3	81598	Bushing, 9,11	83324	Selector Bar "G-2", 3
78596	Washer - Spring, 5	81599	Eccentric, 10	83332	Bracket - Left, 4
78713	Frame, 12	81601	Silencer - Felt, 8,10	83333	Bracket - Right, 4
78720	Ratchet, 12	81603	Tape Knife, 8,10	83335	Key Lever - Offset, 1,2
78723	Eccentric, 12	81605	Chad Chute Cover, 11	83337	Key Lever - Offset, 1,2
78724	Feed Pawl, 12	81609	Terminal Shield, 8,10	83338	Shaft, 2
78725	Latch Pawl, 12	81638	Collar, 9,11	83342	Slide Plate, 4
78726	Release Latch, 12	81657	Shim, 9,11	83343	Spacing Rod, 5
78727	Latch Bracket, 12	81682	Glass Rail - Right - Black Gloss, 14	83345	Bracket, 1
78728	Bracket, 12		Glass Rail - Left - Black Gloss, 14	83346	Operating Lever, 5
78729	Armature, 12	81683	Fastening Strip, 14	83348	Extension, 5
78732	Feed Pawl Bracket, 12	81684	Contact Spring, 6	83349	Detent Bracket, 5
78733	Release Lever, 12	81721	Terminal, 6,9,11	83351	Plate, 6
78734	Contact Cam, 12	81726	Plate, 15	83353	Condenser Cover, 2
78735	Contact Lever, 12	81734	Cable Clamp, 1	83354	Spacing Rod Bracket, 5
78736	Bracket, 12	81749	Resistor - 200 Ohms, 2	83355	Washer - Fibre, 2
78740	Spring, 12	81755	Glass, 13	83356	Bracket, 2
78741	Spring, 12	81764	Pad - Felt, 13	83357	Counter Bracket, 13
78742	Clamp, 12	81765	Retaining Ring, 13	83361	Link Extension, 8,10
78743	Dashpot Cylinder, 12	81766	Pad - Felt, 13	83362	Bearing Bracket, 8,10
78744	Piston, 12	81769	Bracket - Left, 13	83363	Selector Lever #1, 8,10
78745	Cap, 12	81771	Bracket - Right, 13	83364	Selector Lever #2 and #5, 8,10
78746	Screw (3/16-40 x 3/8 Special), 12	81772	Bushing, 13	83365	Selector Lever #3 and #4, 8,10
78747	Plug, 12	81772	Screw (4-40 x 29/32), 6	83370	Extension, 9,10,11
78748	Spring, 12	81773	Guide and Die Plates (Fitted Together), 9,11	83372	Tape Stripper Plate, 11
78755	Insulator, 12	81793	Washer - Bakelite, 6	83374	Locking Lever, 1
78758	Contact (Assem.), 12	81836	Clip, 16	83376	Bearing Rod, 8,10
78932	Set of Spring Cushion Keypops, 17	82279	Guide, 16	83377	Name Plate, 14
		82281	Shim, 9,11	83379	Cover, 6
		82392	Pad - Right Side, 14	83384	Back Space Pawl, 8,10
		82399	Pad - Rear - Lower, 14	83385	Back Space Cam, 10
		82401	Pad - Rear - Upper, 14	83390	Tape Tension Spring, 16
		82402	Pad - Front, 14	83421	Pad - Left Side, 14
		82403	Retaining Spring, 14	83424	Tape Guide, 15
		82404	Retaining Spring, 14	83427	Glass, 15
		82405	Retaining Spring, 14	83428	Glass Rail, 15
		82406	Retaining Spring, 14	83429	Back Spacer, 15
		82408	Retaining Spring, 14	83434	Channel - Rubber, 15
		82409	Retaining Spring, 14	83436	Bracket, 15
		82410	Retaining Spring, 14	83437	Counter Mechanism (Assem.), 12
		82411	Hinge Bracket, 14	83441	Nipple, 13
		82412	Hinge Bracket, 14	83442	Cable Clamp - long, 13
		82413	Cover Stop Arm, 14	83443	Cable - Counter, 13
		82414	Cover Detent Knob, 14	83574	Paper Guide Plate - Black Gloss, 14
		82415	Cover Detent Spring, 14	83854	Insulating Cloth, 2
		82425	Glass, 14	83885	Nut (6-32 Hex.), 14
		82440	Screw (6-40 x 7/16), 1	83895	Cable - Resistor, 2
		82444	Bushing - Bakelite, 6	83901	Dial Plate, 13
		82547	Insulator, 6	83919	Shim, 3
		82607	Spring Cushion Keypop (H Stop), 17	83921	Perforator Bracket, 10,11
		82702	Screw (6-40 x 9/32), 12	83922	Roller, 11
		82713	Screw (4-40 x 9/32 Special), 12	83923	Bracket, 11
		82720	Screw (6-40 x 1/4 Set), 12	83924	Roller Fork, 11
		82725	Spring, 10	83926	Indicator, 13
		82726	Spring, 10	84023	Spring, 9,11
		82727	Spring, 8,10	84082	Screw (6-40 x 13/32), 9
		82728	Name Plate, 14	84592	Shim, 8,10
		82729	Name Plate, 14	84663	Bracket, 6
		82866	Resistor - 4500 Ohms (800-3700) 4	84664	Screw (4-40 x 1-9/32), 6
		82930	Contact Spring, 6	84665	Bushing - Bakelite, 6
		83300	Keyboard Base - Black Gloss, 1,2	84675	Contact Spring, 6
		83302	Key Lever Guide, 1	84698	Contact Spring, 9,11
		83303	Spring Plate, 2	84758	Spring, 8,10
		83305	Selector Bar Bracket, 3	84767	Contact Spring, 9,11
		83307	Connecting Link - "A", 3	84892	Stiffener, 6
		83308	Connecting Link - "B", 3	84903	Contact Spring, 6
		83309	Connecting Link - "C", 3	84904	Contact (Assem.), 6
		83310	Connecting Link - "D", 3	84911	Contact Bracket, 5,6
		83311	Connecting Link - "E", 3	84923	Spring - Rear, 6
		83312	Connecting Link - "G", 3	84924	Spring - Front, 6
		83314	Selector Bar "A-1", 3	84990	Screw (.138-40 x 1/4), 1
		83315	Selector Bar "A-2", 3	85376	Key Lever Spring, 1,2
		83316	Selector Bar "B-1", 3	85384	Bushing, 8,10
		83317	Selector Bar "B-2", 3	85976	Spacer, 8,10
		83318	Selector Bar "C-1", 3	86531	Screw (6-40 Shoulder), 15
		83319	Selector Bar "C-2", 3	86634	Stiffener, 6
				86774	Screw (6-40 Shoulder), 8
				86854	Perforator Cover - Black Gloss, 15

Spring Cushion Keypops

78946	A - , 17
78947	B ? , 17
78948	C : , 17
78949	D # , 17
78950	E 3 , 17
78951	F ! , 17
78952	G & , 17
78953	H * , 17
78954	I 8 , 17
78955	J ' , 17
78956	K ( , 17
78957	L ) , 17
78958	M . , 17
78959	N , 17
78960	O 9 , 17
78961	P 0 , 17
78962	Q 1 , 17
78963	R 4 , 17
78964	T 5 , 17
78965	U 7 , 17
78966	V ; , 17
78967	W 2 , 17
78968	X / , 17
78969	Y 6 , 17
78970	Z " , 17
78971	Blank , 17
78972	Figs. , 17
78973	Ltrs. , 17
78976	Car. Ret. , 17
78978	Line Feed , 17
78980	S Bell , 17
80334	Terminal, 6
80402	Screw (4-40 x 15/32), 1
80444	Screw (6-40 x 1/4), 5,13
80471	Spring, 5
80875	Cover Arm, 14
80985	Screw (4-40 x 1/4), 14
80986	Lock Washer, 14
81433	Shim, 2
81501	Magnet Core, 8,10
81515	Punch Holder, 9,11
81524	Selector Finger, 8,10
81530	Adjusting Screw - Right, 8,10
81531	Adjusting Screw - Left, 8,10
81532	Bumper - Leather, 8,10
81553	Feed Pawl, 10
81564	Screw (6-40 x 3/8 Special), 8,9,10,11

86856	Tape Reel Container - Black Gloss, 16	89974	Contact (Assem.), 6	92505	Shielding Tube, 7
86861	Tape Reel Cover - Black Gloss, 16	90260	Spring, 5	92511	Roller, 5
86865	Chad Chute, 9,11	90421	Spacer - Rear, 13	94086	Spacing Rod Bracket, 5
86871	Bracket - Black Gloss, 14	90438	Button - Felt, 5	94087	Extension, 5
86919	Lock Plate, 8,10	90951	Lock Washer, 8	94088	Spacing Rod, 5
86920	Star Wheel, 8,10	91003	Repeat Space Extension, 1	94248	Cable Clamp, 1,2,9,10,11
87174	Retaining Plate - Black Gloss, 1	91120	Spring, 1,5	94249	Cable Clamp, 2
87175	Counter Cover, 13	91205	Detent (Assem.), 8,10	96871	Detent Lever, 8,10
87176	Shield - Black Gloss, 13	91214	Perforator Cover - Black Wrinkle, 15	96872	Roller, 8,10
87177	Counter Casting - Black Gloss, 13	91215	Bracket - Black Wrinkle, 14	96873	Journal, 8,10
87528	Counter Cover (Assem.) - Black Gloss, 13	91216	Tape Reel Cover - Black Wrinkle, 16	96883	Terminal, 1
87636	Screw (2-56 x 3/16), 14	91217	Tape Reel Container - Black Wrinkle, 16	97631	Adjusting Bracket, 9
87936	Bracket, 15	91222	Covering Strip - Black Wrinkle, 14	97632	Bracket, 8
87937	Bracket (with Rod), 15	91223	Paper Guide Plate - Black Wrinkle, 14	97633	Feed Pawl Lever, 8
88877	Lacing - Black, 14	91514	Glass Rail - Left - Black Wrinkle, 14	97634	Feed Pawl, 8
88995	Post, 1	91515	Glass Rail - Right - Black Wrinkle, 14	97635	Armature Lever, 9
89070	Cutout Lever, 5	91540	Counter Control Unit, 4	97637	Eccentric, 8
89071	Bushing, 5	91543	Bracket, 8,10	97638	Guide, 9
89072	Spring, 1	91544	Spring Adjusting Lever, 8,10	97639	Spring Post, 8
89073	Extension, 5	91545	Extension, 8,10	97640	Spring Post, 8
89074	Stud - Eccentric, 5	91546	Screw (10-32 Shoulder), 8,10	97641	Armature, 8,9
89086	Tape Reel, 16	91547	Bracket, 9,11	97642	Bumper - Leather, 8
89087	Core, 16	91548	Bushing, 8,10	97643	Back Space Lever, 8
89088	Filler - Wood, 16	91550	Contact Operating Lever, 8,9, 10	98841	Bracket, 9
89089	Tape Retainer, 16	91554	Universal Bar, 4	99871	Counter Bracket, 13
89330	Key Lever Spring, 1,2	91555	Contact Bracket, 9,11	99872	Lamp Bracket, 13
89354	Strap, 2,13	91556	Contact Lever, 8,10	99873	Perforator and counter Unit Cover (Assem.) - Black Wrinkle, 15
89410	Set of Spring Cushion Keypops, 17	91558	Selector Lever Guide, 8,10	99875	Perforator and counter Cover, 15
	<u>Spring Cushion Keypops</u>	91559	Feed Punch Selector Lever, 8, 9,10	99876	Back Spacer, 15
89413	(A ↑), 17	91562	Screw (10-32 x 2-1/2), 6	99878	Clamp Bushing, 13
89414	(B ↓), 17	91564	Armature, 10,11	99881	Cable - Counter and Perforator, 13
89415	(D ↗), 17	91565	Shim, 2,4	99882	Channel - Rubber, 15
89416	(F →), 17	91568	Contact Spring, 6	99985	Tape Stripper Plate, 8
89417	(G ↘), 17	91571	Contact (Assem.), 6	99987	Retaining Bracket, 9
89418	(H ↓), 17	91573	Contact Spring, 6	99988	Link Extension - Upper, 8
89419	(J ↗), 17	91574	Bracket, 6	99989	Link Extension - Lower, 8
89420	(K ←), 17	91575	Cover, 6	101435	Tape Reel Container (Assem.) - Black Wrinkle, 16
89421	(L ↖), 17	91576	Cable - Perforator, 13	101456	Screw (6-32 x 9/32), 1
89422	(Z +), 17	91577	Spring, 8,10	101476	Strip - Felt, 15
89423	(O ○), 17	91733	Filter Bracket, 7,9	102313	Perforator Unit Cover (Assem.) - Black Wrinkle, 15
89424	(V ⊕), 17	91734	Filter Bracket, 7	102482	Perforator Unit Cover (Assem.) - Black Gloss, 15
89425	(B ⊕), 17	91739	Insulator, 1	102485	Tape Reel Container (Assem.) - Black Gloss, 16
89426	(N ⊕), 17	91743	Set of Spring Cushion Key- tops, 17	103386	Terminal Guard, 12
89493	Spacer Bar Loop, 1	91751	Copyholder - Black Wrinkle, 15	103453	Counter Mechanism (Assem.), 12
89494	Spacer Key Lever, 1	91752	Copyholder - 6" (Assem.) - Black Wrinkle, 15		
89495	Spacer Bar, 1	92170	Filter Bracket, 5,7		
89496	Shaft, 1	92204	Cable, 13		
89498	Armature Lever, 10,11	92216	Filter (Assem.), 7		
89499	Selector Finger Guide, 9,11	92222	Filter Unit (Assem.), 7		
89500	Feed Punch - Small, 9,11	92224	Filter Unit (Assem.), 7		
89504	Punch Block (Assem.) 5 Unit - Straight Feed Hole, 9,11	92225	Filter Unit (Assem.), 7		
89896	Oil Cup, 5				
89897	Nut (10-32 Hex.), 5				
89917	Screw (4-40 Eccentric), 5				
89963	Eccentric, 8,10				