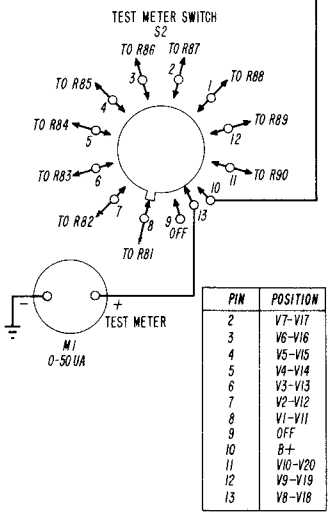
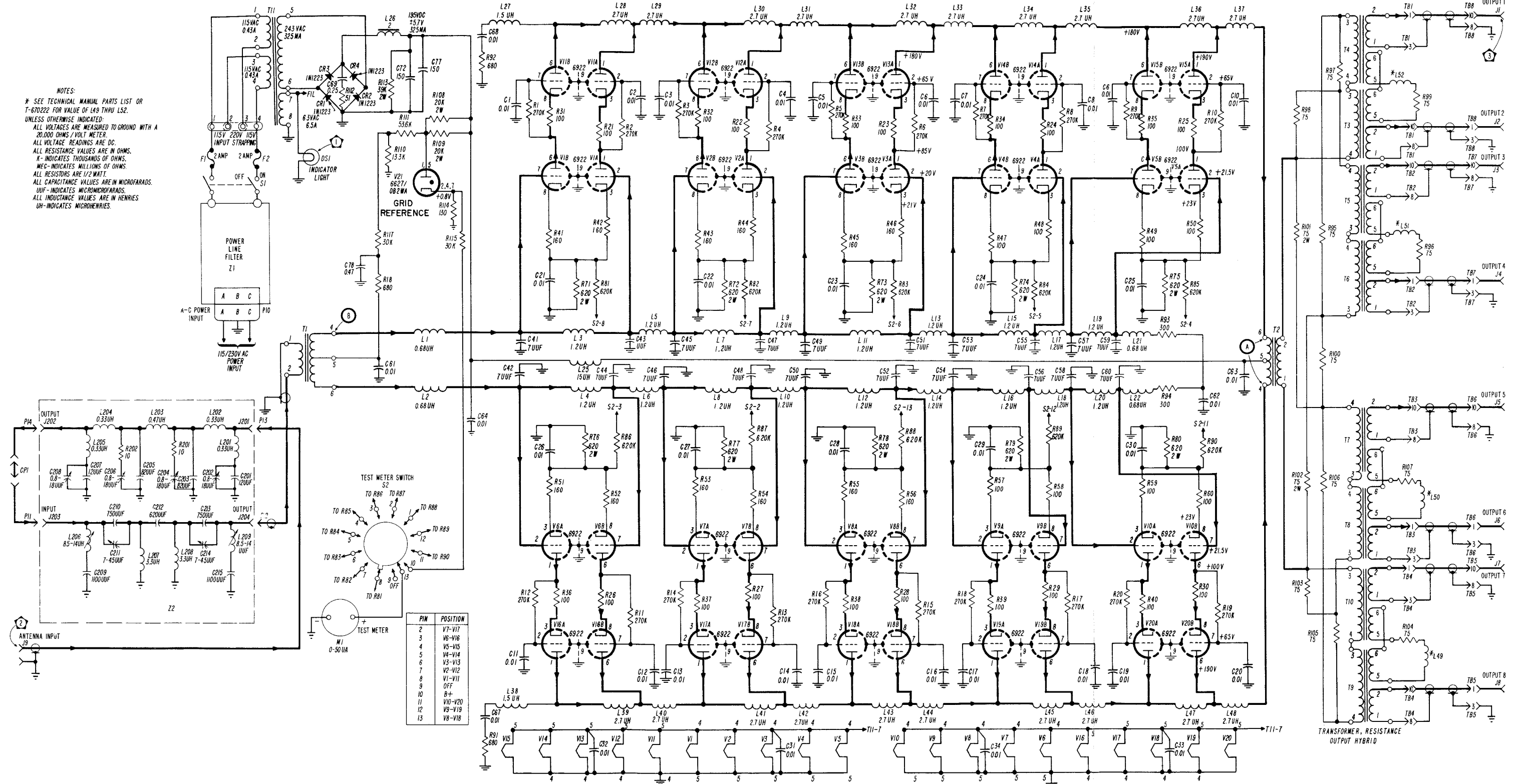


NOTES:
 * SEE TECHNICAL MANUAL PARTS LIST OR T-670222 FOR VALUE OF L49 THRU L52.
 UNLESS OTHERWISE INDICATED:
 ALL VOLTAGE READINGS ARE MEASURED TO GROUND WITH A 20,000 OHMS/VOLT METER.
 ALL VOLTAGE READINGS ARE DC.
 ALL RESISTANCE VALUES ARE IN OHMS.
 K- INDICATES THOUSANDS OF OHMS.
 MEG- INDICATES MILLIONS OF OHMS.
 ALL RESISTORS ARE 1/2 WATT.
 ALL CAPACITANCE VALUES ARE IN MICROFARADS.
 UUF- INDICATES MICROMICROFARADS.
 ALL INDUCTANCE VALUES ARE IN HENRIES.
 UH- INDICATES MICROHENRIES.



PIN	POSITION
2	V7-V17
3	V6-V16
4	V5-V15
5	V4-V14
6	V3-V13
7	V2-V12
8	V1-V11
9	OFF
10	B+
11	V10-V20
12	V9-V19
13	V8-V18

Figure 6-3. Antenna Coupler CU-872/U, Schematic Diagram

ORIGINAL