

CSP 6620A

REGISTER NO.

SECRET-CRYPTO

CRYPTOGRAPHIC EQUIPMENT
PLANNING AND REFERENCE
GUIDE (U)

CSP 6620A

DEPARTMENT OF THE NAVY
OFFICE OF THE CHIEF OF NAVAL OPERATIONS
SEPTEMBER 1962

EXCLUDED FROM AUTOMATIC
DECLASSIFICATION FOR DIR 5200.10
PPLY

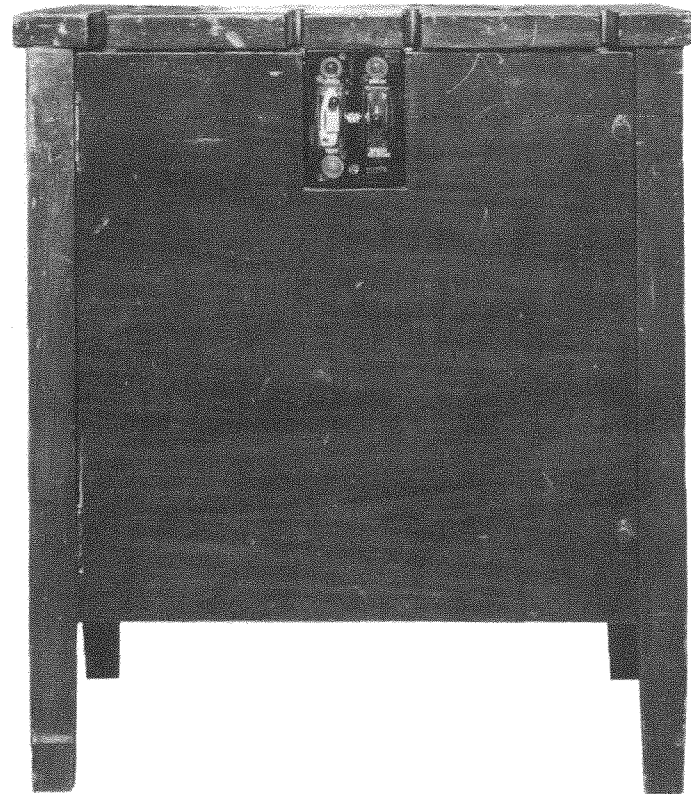
DO NOT REMOVE FROM BINDER

DECLASSIFIED per SEC 3.4 E.O. 12958
by Director, NSA/Chief, CSS
GW date *27 Oct 98*

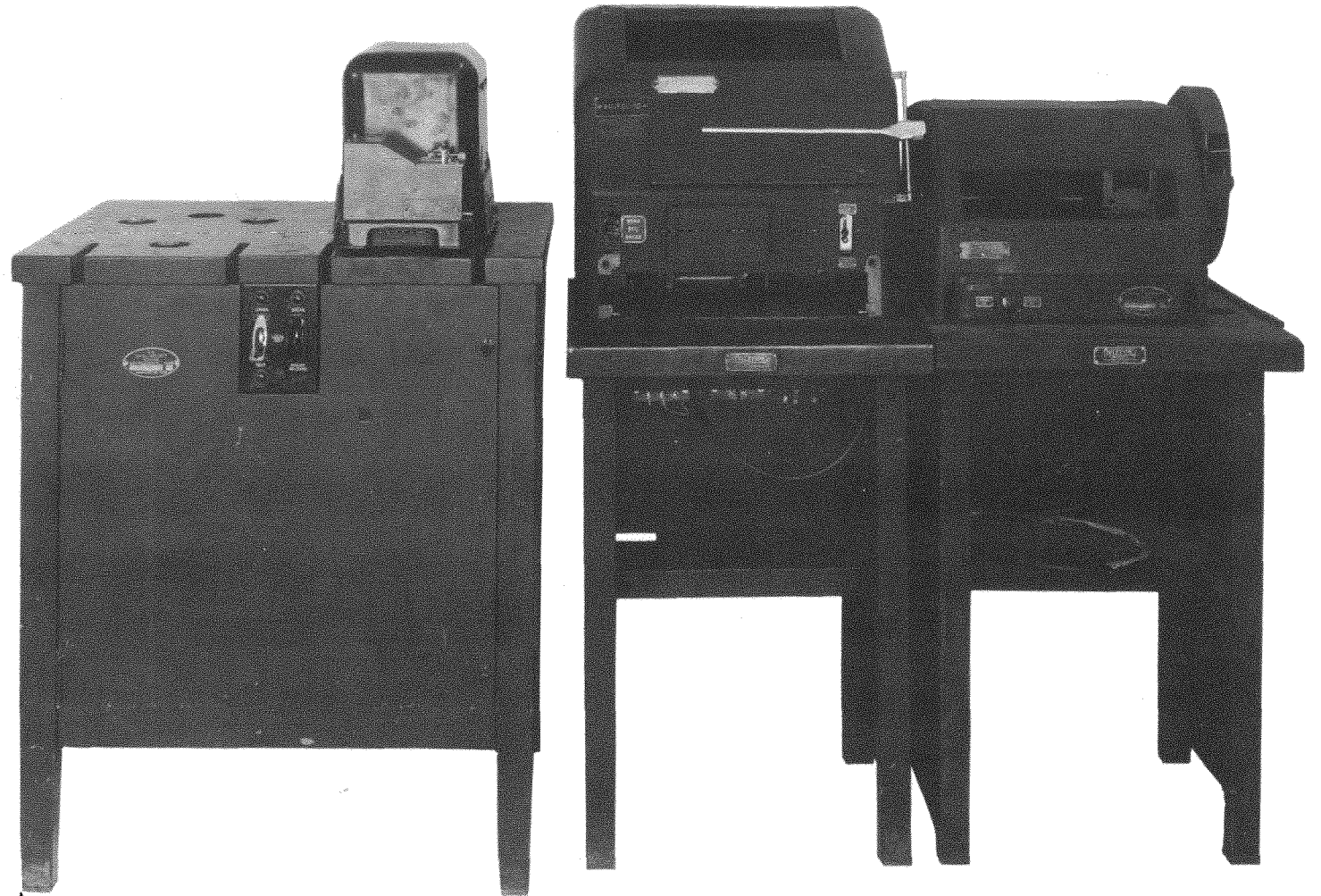
IT

ORIGINAL
(Reverse Blank)

AN/FGQ-1



AN/FGQ-1



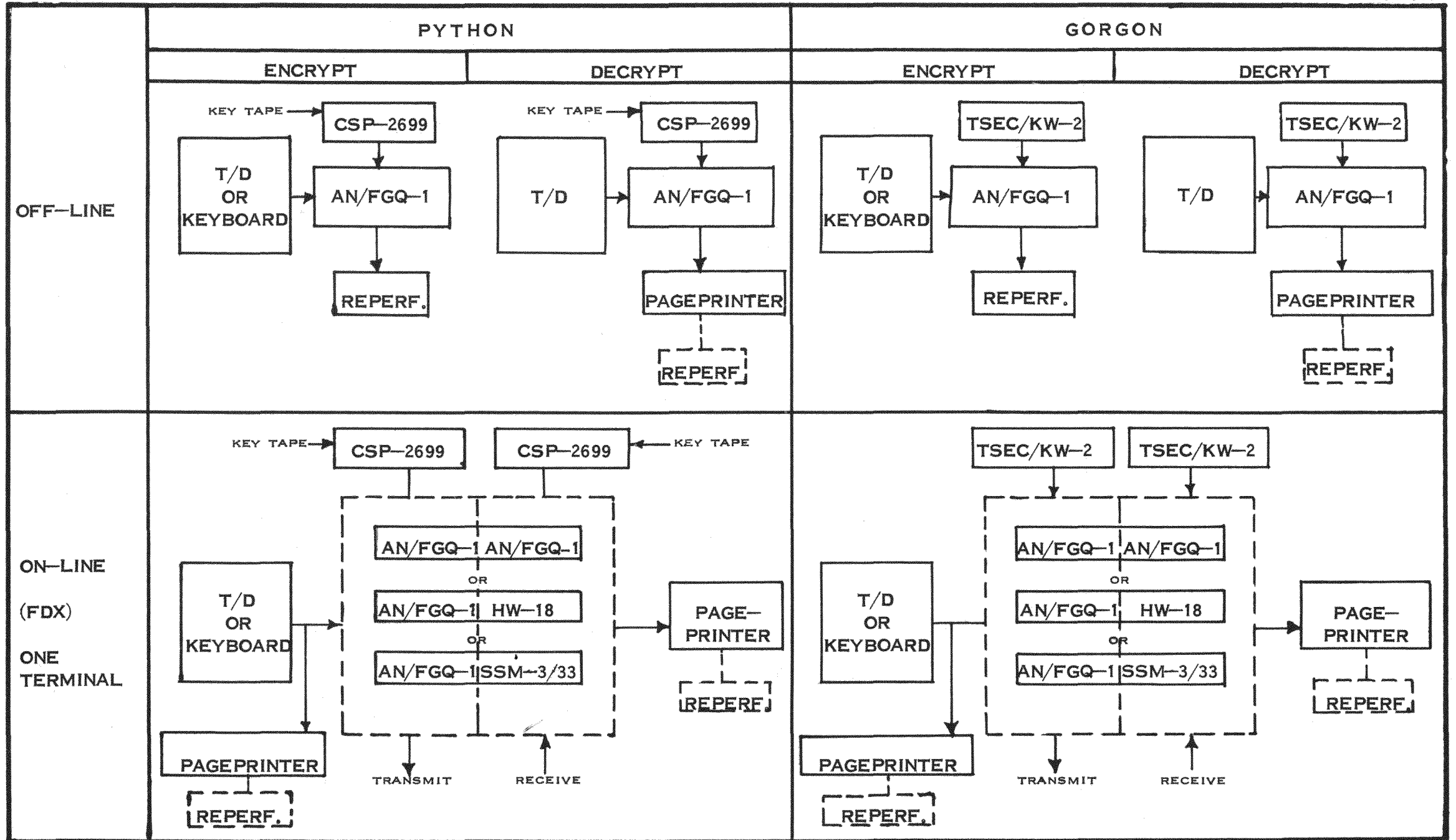
RECEIVE TERMINAL, FULL DUPLEX PYTHON
USING AN/FGQ-1

DESCRIPTION	<p>AN ELECTROMECHANICAL TELETYPEWRITER SIGNAL MIXER USE IN ON-LINE OR OFF-LINE APPLICATIONS. IT COMBINES, BY BINARY ADDITION, THE FIVE LEVEL CODE OF THE TELETYPEWRITER CHARACTERS, WHICH ARE ON A ONE-TIME KEY TAPE, WITH THE FIVE LEVEL CODE OF THE TELETYPEWRITER CHARACTERS TO BE ENCIPHERED OR DECIPHERED. IT IS USED IN CONJUNCTION WITH THE CSP-2699 WHICH READS THE ONE-TIME TAPE IN PYTHON OPERATION. (CAN ALSO BE USED IN CONJUNCTION WITH THE KW-2 IN GORGON OPERATION). THE OUTPUT CONSISTS OF A START-STOP NON-SYNCHRONOUS TELETYPEWRITER SIGNAL AT A SPEED OF 45,5 BAUD (60 WPM).</p> <p>(ALSO KNOWN AS THE 131B2 TABLE)</p>																														
STATUS	IN USE				SPARE PARTS SUPPORT - ESO																										
TRAINING	<p>A 5 WEEK COURSE IS CONDUCTED AT CRF PORTSMOUTH AND MARE IS. CLASSES CONVEENE EVERY 7 WEEK. ELIGIBLE ARE CT(M)3, ET3, RM3 AND ABOVE WHO HAVE COMPLETED KL-47 OR AN/GGA-1 COURSES.</p>																														
CRYPTOSYSTEM	<p>CURRENTLY USED ONLY WITH PYTHON (CAN ALSO BE USED WITH GORGON - SEE KW-2 SECTION)</p>																														
CLASSIFICATION	<p>EQUIPMENT: UNCLASSIFIED KEYING MATERIAL: SEE CSP-2699 AND KW-2 SECTIONS TRAFFIC: ALL CLASSIFICATIONS (FOR TOP SECRET AND SPECIAL CATEGORY TRAFFIC CSPM 1C, 1-50 REFERS)</p>																														
PUBLICATIONS	<p>MAINTENANCE: TM 11-2209 (ARMY PUBLICATION) OPERATING: KAO-8 (CONFIDENTIAL-CRYPTO)</p>																														
PROCUREMENT	<p>APPROXIMATELY 600-800 EQUIPMENTS WERE PROCURED PRIOR TO 1951</p>																														
	HEIGHT	WIDTH	DEPTH	WEIGHT	VOLTAGE	POWER	REMARKS																								
	30 1/2 IN.	26 INS.	22 INS.	160 LBS.	105-125 DC 95-125 AC (60 CPS)	315 WATTS																									
ASSOCIATED EQUIPMENT	<p>C-2192/UG: A CONTROL DEVICE TO AID IN THE PREVENTION OF INADVERTENT TRANSMISSION OF PLAIN TEXT FROM THE KEYBOARD OR T/D. C-2272/UG: A CONTROL DEVICE (FOR SOSUS ONLY) WHICH PROVIDES A MEANS FOR A SENDING STATION TO SWITCH THE LINE AUTOMATICALLY FROM A CIPHER TO TEXT CONDITION OR VICE VERSA.</p>																														
DISTRIBUTION (APPROXIMATE)	<table border="0"> <tr> <td>COMMANDS</td> <td>- 100</td> <td>COMMSTAs</td> <td>- 233</td> </tr> <tr> <td>SCHOOLS</td> <td>- 18</td> <td>NAVFACs</td> <td>- 42</td> </tr> <tr> <td>NAVAL AIR</td> <td>- 20</td> <td>NAVRADSTAs</td> <td>- 12</td> </tr> <tr> <td>MARINES</td> <td>- 8</td> <td>SPECIAL</td> <td>- 152</td> </tr> <tr> <td>WEATHER CENTRAL</td> <td>- 9</td> <td>TOTAL</td> <td>- 600</td> </tr> <tr> <td>SHIPYARDS</td> <td>- 6</td> <td></td> <td></td> </tr> </table>							COMMANDS	- 100	COMMSTAs	- 233	SCHOOLS	- 18	NAVFACs	- 42	NAVAL AIR	- 20	NAVRADSTAs	- 12	MARINES	- 8	SPECIAL	- 152	WEATHER CENTRAL	- 9	TOTAL	- 600	SHIPYARDS	- 6		
COMMANDS	- 100	COMMSTAs	- 233																												
SCHOOLS	- 18	NAVFACs	- 42																												
NAVAL AIR	- 20	NAVRADSTAs	- 12																												
MARINES	- 8	SPECIAL	- 152																												
WEATHER CENTRAL	- 9	TOTAL	- 600																												
SHIPYARDS	- 6																														

AN/FGQ-1: SYSTEM BLOCK DIAGRAMS

UNCLASSIFIED

CSP 6620A



UNCLASSIFIED

ORIGINAL